

GOVERNMENT OF GIBRALTAR

**HOTEL OCCUPANCY
SURVEY
2005**

STATISTICS OFFICE



GOVERNMENT OF GIBRALTAR

HOTEL OCCUPANCY SURVEY 2005

STATISTICS OFFICE

Government of Gibraltar
Statistics Office

Statistics Online

Copies of the Hotel Occupancy Survey can be obtained, free of charge from the Statistics Office and are also available electronically on the Gibraltar Government Website www.gibraltar.gov.gi.

Comments and requests for general information should be addressed to:

Statistics Office
99 New Harbours
The New Harbours
Gibraltar
Or
E-mail: statistics@gibraltar.gov.gi
Tel: +350 75515/ +350 75490
Fax: +350 51160

PREFACE

The Statistics (Hotel Occupancy) Order 1971 requires that the Government Statistician prepares a report and summary of the findings of the Hotel Occupancy Survey to be laid before the House of Assembly.

This is the thirtieth such report and it contains a summary of the statistics collected for the years 1979 – 2005.

I must express my thanks to the hotels for their continued co-operation in the conduct of this survey.

GOVERNMENT STATISTICIAN

MARCH 2006

- C O N T E N T S -

	<u>PAGE</u>
A. Definitions and Notes	
Table 1 General Analysis, All Hotels, 1979 - 2005	1
Chart All Arrivals at Hotels, 1979 - 2005	2
Chart % Room Occupancy, All Arrivals, 1993 - 2005	3
Chart Average Length of Stay, All Arrivals, 1979 - 2005	4
Table 2(a) Room Nights Sold and Offered, All Hotel, 1999 - 2003 (All Arrivals)	5
Table 2(b) Room Nights Sold and Offered, All Hotels, 2004 - 2005 (All Arrivals)	6
Chart Room Nights Sold, All Arrivals, 2002 - 2005	7
Table 2(c) Room Nights Sold and Offered, All Hotels, 1999 - 2003 (Tourist Arrivals)	8
Table 2(d) Room Nights Sold and Offered, All Hotels, 2004 - 2005 (Tourist Arrivals)	9
Chart Room Nights Sold, Tourist Arrivals, 2002 - 2005	10
Table 3(a) % Room Occupancy Rates, 1995 - 1999	11
Table 3(b) % Room Occupancy Rates, 2000 - 2005	12
Chart % Room Occupancy Rates, All Arrivals, 2002 - 2005	13
Chart % Room Occupancy Rates, Tourist Arrivals, 2002 - 2005	14
Table 4(a) Number of Arrivals by Month, All Hotels, 1979 - 1985	15
Table 4(b) Number of Arrivals by Month, All Hotels, 1986 - 1992	16
Table 4(c) Number of Arrivals by Month, All Hotels, 1993 - 1999	17
Table 4(d) Number of Arrivals by Month, All Hotels, 2000 - 2005	18
Chart All Arrivals at Hotels, 2000 - 2005	19
Table 5(a) Guest Nights Sold/Offered, % Sleeper Occupancy, All Hotels, 1979, - 1982 (All Arrivals)	20
Table 5(b) Guest Nights Sold/Offered, % Sleeper Occupancy, All Hotels, 1983 - 1986 (All Arrivals)	21
Table 5(c) Guest Nights Sold/Offered, % Sleeper Occupancy, All Hotels, 1987 - 1990 (All Arrivals)	22
Table 5(d) Guest Nights Sold/Offered, % Sleeper Occupancy, All Hotels, 1991 - 1994 (All Arrivals)	23
Table 5(e) Guest Nights Sold/Offered, % Sleeper Occupancy, All Hotels, 1995 - 1998 (All Arrivals)	24
Table 5(f) Guest Nights Sold/Offered, % Sleeper Occupancy, All Hotels, 1999 - 2002 (All Arrivals)	25

		<u>PAGE</u>
Table 5(g)	Guest Nights Sold/Offered, % Sleeper Occupancy, All Hotels, 2003 - 2005 (All Arrivals)	26
Chart	Guest Nights Sold, All Arrivals, 2003 - 2005	27
Chart	Guest Nights Offered, All Arrivals, 2003 - 2005	28
Chart	% Sleeper Occupancy, All Arrivals, 2003 - 2005	29
Table 6(a)	Guest Nights Sold/Offered, % Sleeper Occupancy, All Hotels, 1979 - 1982 (Tourist Arrivals)	30
Table 6(b)	Guest Nights Sold/Offered, % Sleeper Occupancy, All Hotels, 1983 - 1986 (Tourist Arrivals)	31
Table 6(c)	Guest Nights Sold/Offered, % Sleeper Occupancy, All Hotels, 1987 - 1990 (Tourist Arrivals)	32
Table 6(d)	Guest Nights Sold/Offered, % Sleeper Occupancy, All Hotels, 1991 - 1994 (Tourist Arrivals)	33
Table 6(e)	Guest Nights Sold/Offered, % Sleeper Occupancy, All Hotels, 1995 - 1998 (Tourist Arrivals)	34
Table 6(f)	Guest Nights Sold/Offered, % Sleeper Occupancy, All Hotels, 1999 - 2002 (Tourist Arrivals)	35
Table 6(g)	Guest Nights Sold/Offered, % Sleeper Occupancy, All Hotels, 2003 - 2005 (Tourist Arrivals)	36
Chart	Guest Nights Sold, Tourist Arrivals, 2003 - 2005	37
Chart	% Sleeper Occupancy, Tourist Arrivals, 2003 - 2005	38
Table 7(a)	Average Length of Stay Per Person (Nights), All Hotels, 1979 - 2005 (All Arrivals)	39
Chart	Average Length of Stay, All Arrivals, 2003 - 2005	40
Table 7(b)	Average Length of Stay Per Person (Nights), All Hotels, 1979 - 2005 (Tourist Arrivals)	41
Chart	Average Length of Stay, Tourist Arrivals, 2003 - 2005	42
Table 8	Summary of Hotel Statistics, 1972 - 2005	43
Chart	Arrivals at Hotels, 1992 - 2005	44
Chart	Average Length of Stay, 1992 - 2005	45

A. DEFINITIONS AND NOTES

- (a) Tourist: A tourist is a person who is primarily in Gibraltar for the purpose of a holiday. It is nevertheless up to the discretion of the individual hotels who to include under this category.
- (b) Guest Nights: Calculated on the basis of “one guest x one night”.
- (c) Room Nights: Calculated on the basis of “one room x one night”.
- (d) Sleeper Occupancy: Calculated as the percentage of guest nights sold over guest nights offered. It should be noted that this measure does not necessarily give an accurate indication of the ability of the hotel to accept more guests. e.g. one person staying in a room with two beds gives a 50% sleeper occupancy and a 100% room occupancy.
- (e) Room Occupancy: Calculated as the percentage of room nights sold over room nights offered.
- (f) In interpreting the figures it should be noted that:
- The Continental Hotel is included as from January 1986.
 - The Sunrise Motel is included for the period January 1992 to December 1994.
 - As from September 1992, the Montarik Hotel is not included.
 - As from November 1992, the Gibraltar Beach Hotel is not included.
 - The Cannon Hotel is included with effect from July 1995.
- (g) Abbreviations: GNS - Guest Nights Sold.
GNO - Guest Nights Offered.
RNS - Room Nights Sold.
RNO - Room Nights Offered.

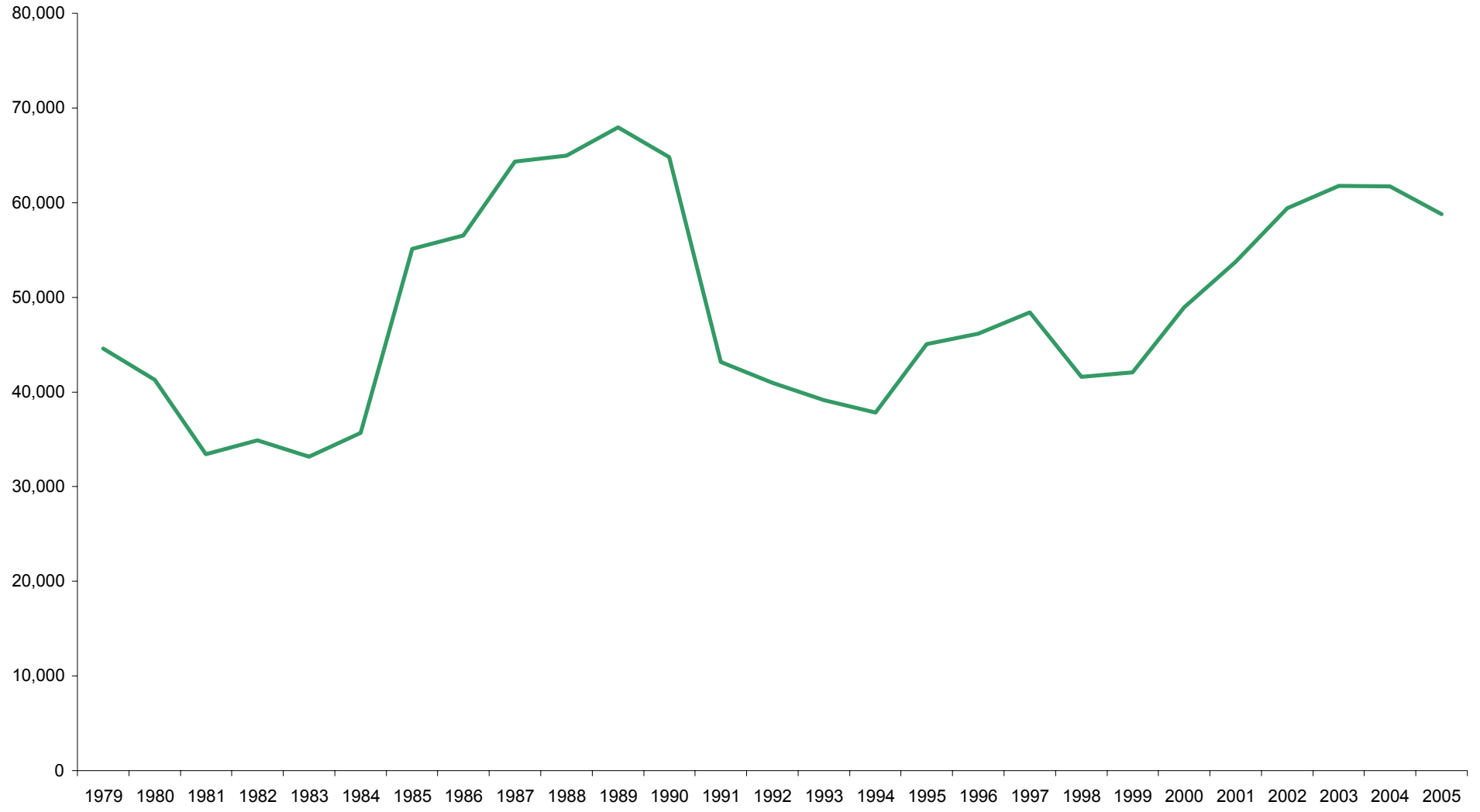
Table 1: General Analysis, All Hotels, 1979 - 2005

<u>YEAR</u>	<u>TOTAL ARRIVALS</u>	<u>(00's)</u>		<u>% ROOM OCCUPANCY</u>		<u>% SLEEPER OCCUPANCY</u>		<u>AVERAGE LENGTH OF STAY</u>
		<u>RNO</u>	<u>RNS</u>	<u>GNO</u>	<u>GNS</u>			
1979	44,569	n/a	n/a	n/a	559	296	53.0	6.6
1980	41,308	n/a	n/a	n/a	551	256	46.5	6.2
1981	33,417	n/a	n/a	n/a	519	188	36.2	5.6
1982	34,896	n/a	n/a	n/a	529	223	42.2	6.4
1983	33,142	n/a	n/a	n/a	546	210	38.4	6.3
1984	35,690	n/a	n/a	n/a	546	226	41.3	6.3
1985	55,119	n/a	n/a	n/a	552	282	51.0	5.1
1986	56,525	n/a	n/a	n/a	519	266	51.3	4.6
1987	64,349	n/a	n/a	n/a	535	278	52.3	4.3
1988	64,942	n/a	n/a	61.3	551	286	52.0	4.4
1989	67,934	n/a	n/a	53.3	501	220	44.0	3.2
1990	64,793	n/a	n/a	51.3	481	197	40.8	3.0
1991	43,193	n/a	n/a	50.6	502	178	35.5	4.1
1992	40,986	2,367	976	41.2	497	157	31.6	3.8
1993	39,123	1,946	941	48.4	391	157	40.2	4.0
1994	37,851	1,986	885	44.5	401	149	37.2	3.9
1995	45,056	1,919	884	46.1	369	144	39.2	3.2
1996	46,142	1,908	826	43.3	372	141	37.8	3.1
1997	48,420	1,904	900	47.3	370	144	39.0	3.0
1998	41,616	1,733	930	53.6	335	145	43.1	3.5
1999	42,031	1,792	991	55.3	351	154	43.7	3.7
2000	48,949	1,790	1,054	58.9	368	164	44.6	3.4
2001	53,776	1,789	1,149	64.2	366	179	48.9	3.3
2002	59,417	1,825	1,176	64.4	367	182	49.7	3.1
2003	61,743	1,855	1,192	64.2	367	188	51.2	3.0
2004	61,710	1,855	1,264	68.2	366	202	55.1	3.3
2005	58,796	1,772	1,216	68.6	349	196	56.2	3.3

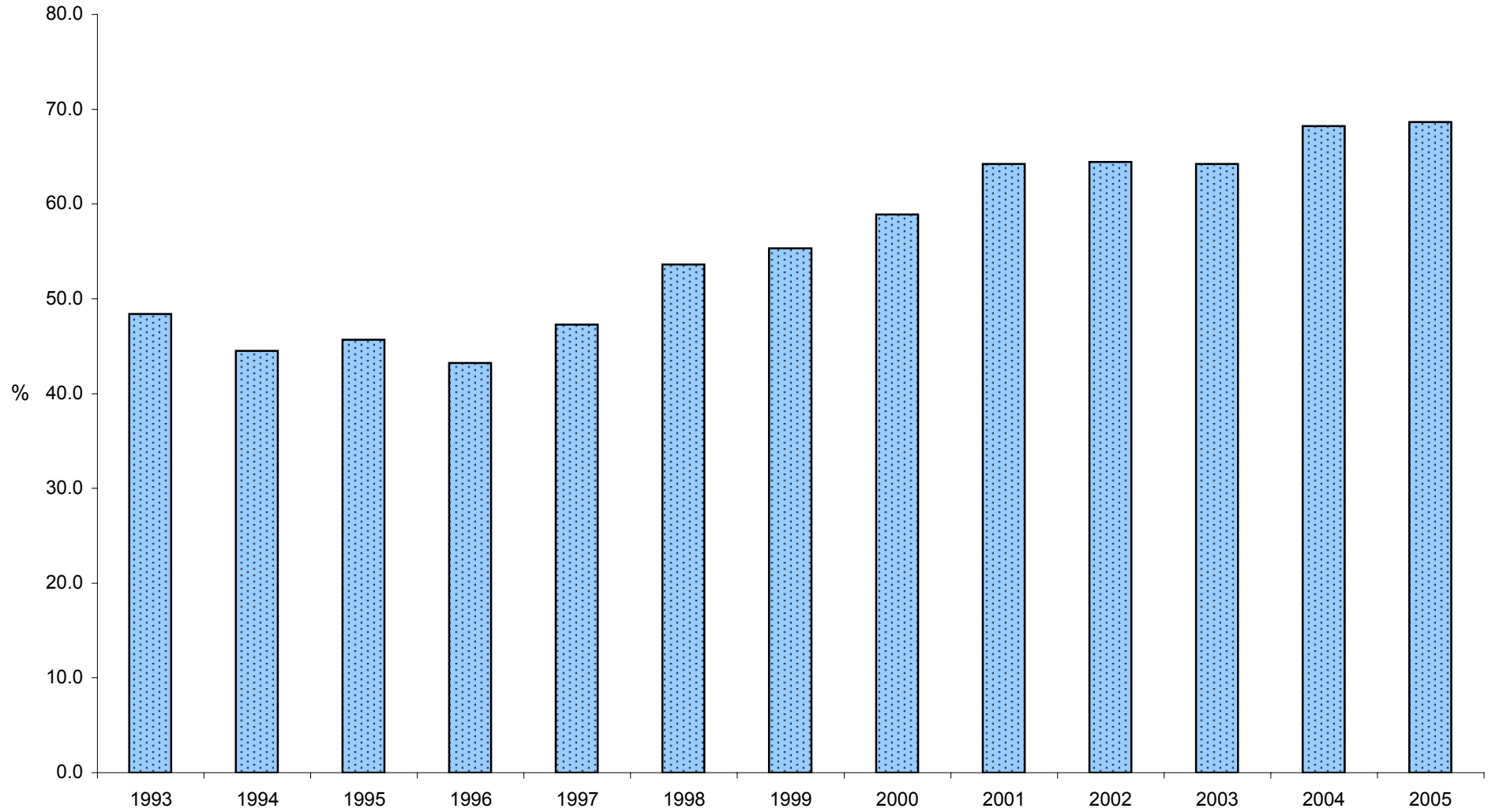
Notes:

1. RNO - Room Nights Offered.
2. RNS - Room Nights Sold.
3. GNO - Guest Nights Offered.
4. GNS - Guest Nights Sold.
5. With effect from January 1992, hotels were required under the legislation to submit returns which included the % room occupancy figures. For the period 1988 to 1991, these figures were provided voluntarily by the hotels.

ALL ARRIVALS AT HOTELS, 1979 - 2005



% ROOM OCCUPANCY, ALL ARRIVALS, 1993 - 2005



AVERAGE LENGTH OF STAY, ALL ARRIVALS, 1979 - 2005

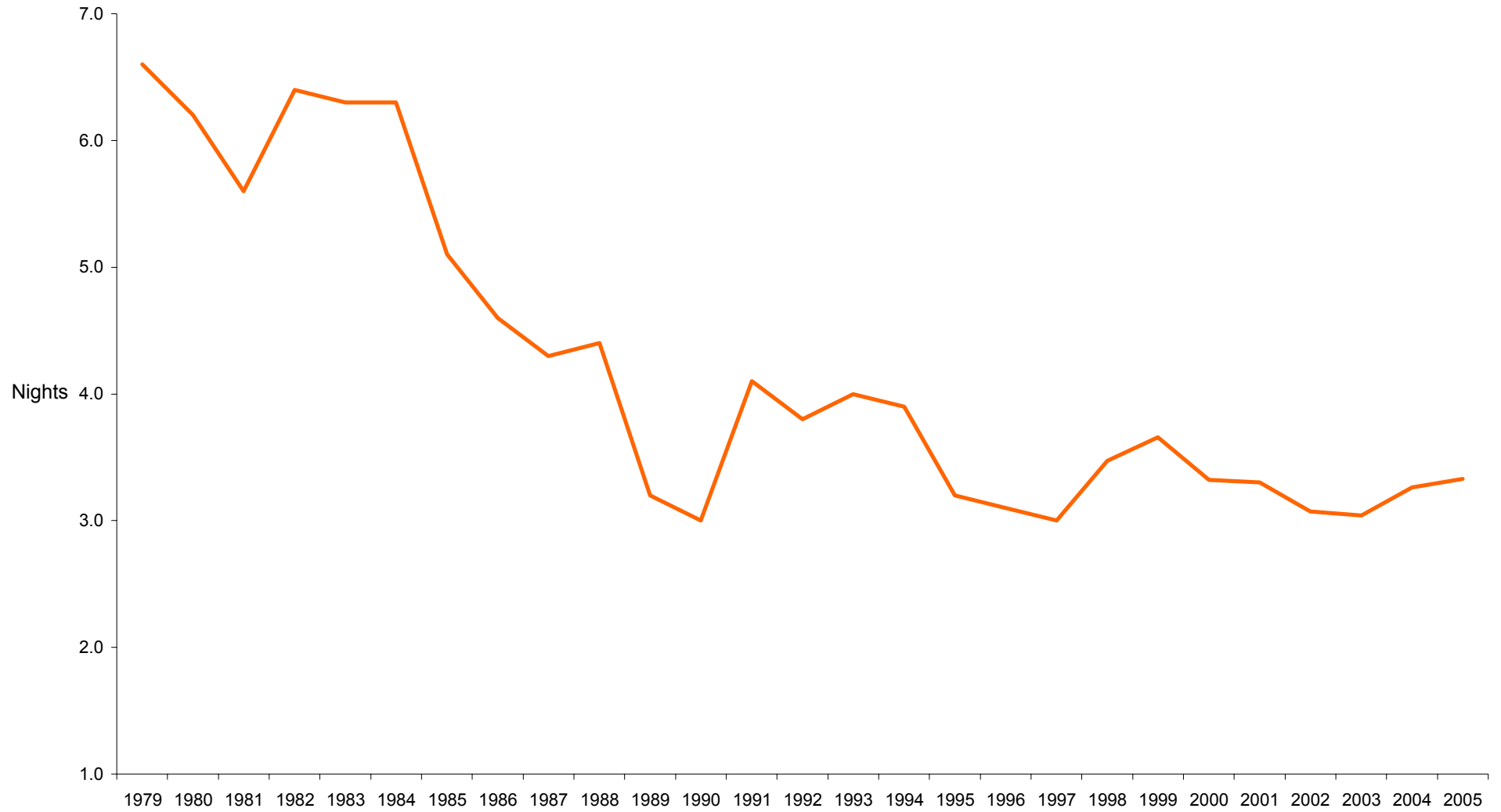


Table 2(a): Room Nights Sold and Offered, All Hotels, 1999 - 2003

<u>MONTH</u>	<u>(00's)</u>					<u>(00's)</u>				
	<u>ROOM NIGHTS SOLD</u>					<u>ROOM NIGHTS OFFERED</u>				
	<u>1999</u>	<u>2000</u>	<u>2001</u>	<u>2002</u>	<u>2003</u>	<u>1999</u>	<u>2000</u>	<u>2001</u>	<u>2002</u>	<u>2003</u>
JANUARY	59	46	67	64	74	152	150	151	152	158
FEBRUARY	60	59	76	78	84	137	141	137	138	142
MARCH	89	78	102	95	105	152	151	151	152	158
APRIL	84	86	97	91	102	148	147	147	148	153
MAY	83	125	108	91	102	152	152	151	151	158
JUNE	89	106	111	106	117	149	148	147	148	153
JULY	83	96	101	112	104	152	151	151	157	158
AUGUST	99	94	100	106	100	152	151	151	158	157
SEPTEMBER	103	119	120	128	121	148	148	148	153	152
OCTOBER	98	98	112	115	112	151	151	152	158	157
NOVEMBER	91	78	87	102	97	147	147	148	153	152
DECEMBER	53	68	68	76	68	151	151	152	158	157
TOTAL	991	1,054	1,149	1,176	1,192	1,792	1,790	1,789	1,825	1,855

Note: Yearly totals have been rounded off and need not necessarily equal the sum of the rounded-off monthly figures.

Table 2(b): Room Nights Sold and Offered, All Hotels, 2004 - 2005

<u>MONTH</u>	<u>ALL ARRIVALS</u>			
	<u>(00's)</u>		<u>(00's)</u>	
	<u>ROOM NIGHTS SOLD</u>		<u>ROOM NIGHTS OFFERED</u>	
	<u>2004</u>	<u>2005</u>	<u>2004</u>	<u>2005</u>
JANUARY	72	84	147	156
FEBRUARY	85	107	146	135
MARCH	113	99	158	149
APRIL	94	107	153	146
MAY	110	113	158	153
JUNE	116	107	153	143
JULY	116	101	159	148
AUGUST	119	103	159	147
SEPTEMBER	134	114	153	142
OCTOBER	117	121	158	147
NOVEMBER	106	90	153	146
DECEMBER	83	70	158	161
TOTAL	1,264	1,216	1,855	1,772

Note:

Yearly totals have been rounded off and need not necessarily equal the sum of the rounded-off monthly figures.

ROOM NIGHTS SOLD, ALL ARRIVALS 2002 - 2005

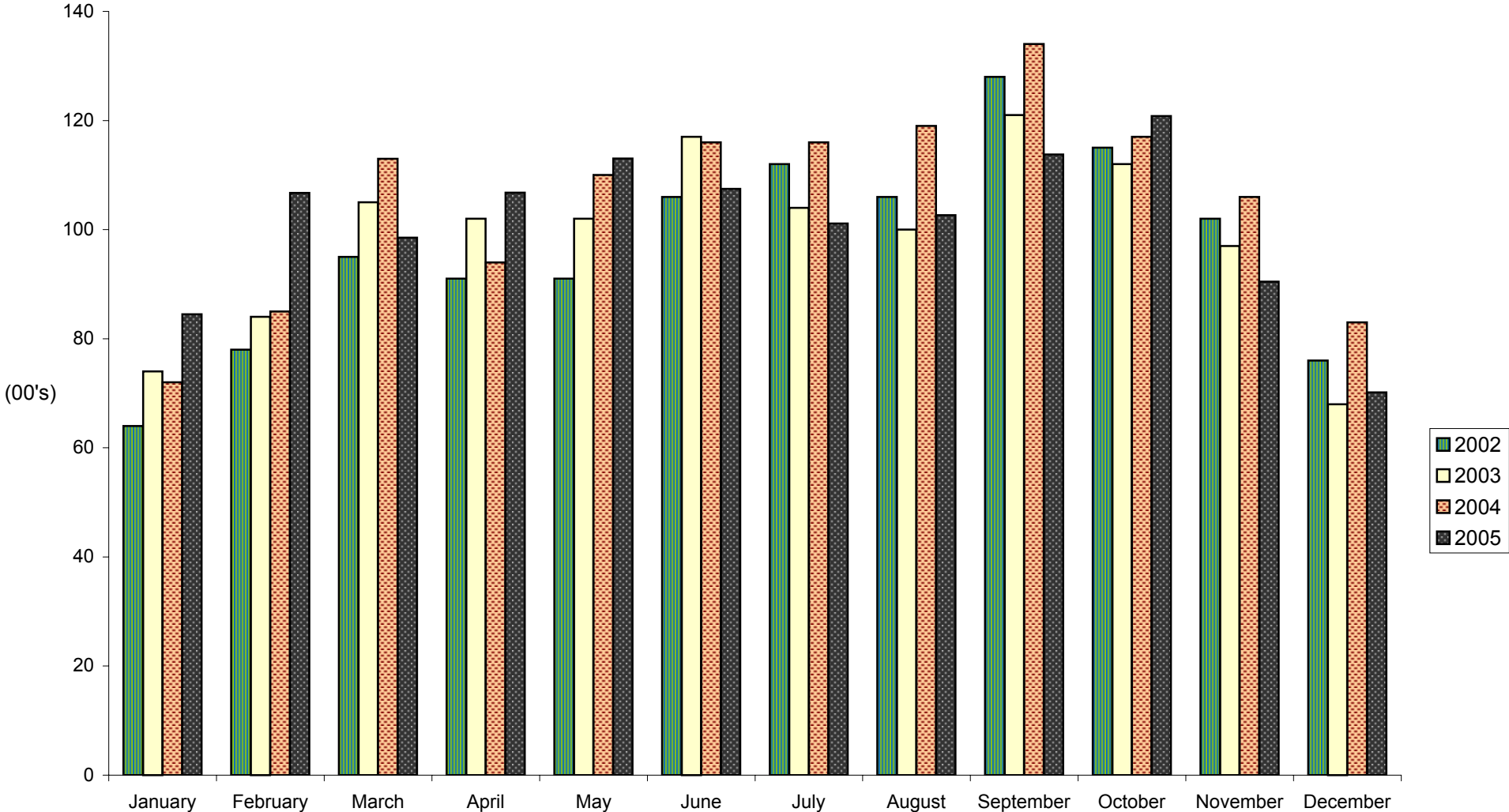


Table 2(c): Room Nights Sold and Offered, All Hotels, 1999 - 2003

<u>MONTH</u>	<u>(00's)</u>					<u>(00's)</u>				
	<u>ROOM NIGHTS SOLD</u>					<u>ROOM NIGHTS OFFERED</u>				
	<u>1999</u>	<u>2000</u>	<u>2001</u>	<u>2002</u>	<u>2003</u>	<u>1999</u>	<u>2000</u>	<u>2001</u>	<u>2002</u>	<u>2003</u>
JANUARY	33	30	40	39	43	152	150	151	152	158
FEBRUARY	37	35	46	48	45	137	141	137	138	142
MARCH	52	50	60	66	65	152	151	151	152	158
APRIL	49	56	53	61	58	148	147	147	148	153
MAY	52	77	64	69	64	152	152	151	151	158
JUNE	55	66	71	60	70	149	148	147	148	153
JULY	50	60	67	74	64	152	151	151	157	158
AUGUST	61	65	68	71	67	152	151	151	158	157
SEPTEMBER	65	80	82	87	82	148	148	148	153	152
OCTOBER	63	66	74	71	74	151	151	152	158	157
NOVEMBER	52	50	55	56	61	147	147	148	153	152
DECEMBER	34	41	41	45	39	151	151	152	158	157
TOTAL	602	675	721	747	731	1,792	1,790	1,789	1,825	1,855

Note: Yearly totals have been rounded off and need not necessarily equal the sum of the rounded-off monthly figures.

Table 2(d): Room Nights Sold and Offered, All Hotels, 2004 - 2005

TOURIST ARRIVALS

<u>MONTH</u>	<u>(00's)</u>		<u>(00's)</u>	
	<u>ROOM NIGHTS SOLD</u>		<u>ROOM NIGHTS OFFERED</u>	
	<u>2004</u>	<u>2005</u>	<u>2004</u>	<u>2005</u>
JANUARY	42	51	147	156
FEBRUARY	53	67	146	135
MARCH	69	63	158	149
APRIL	61	71	153	146
MAY	73	78	158	153
JUNE	70	78	153	143
JULY	74	63	159	148
AUGUST	77	68	159	147
SEPTEMBER	92	75	153	142
OCTOBER	80	81	158	147
NOVEMBER	68	53	153	146
DECEMBER	53	40	158	161
TOTAL	812	787	1,855	1,772

Note:

Yearly totals have been rounded off and need not necessarily equal the sum of the rounded-off monthly figures.

ROOM NIGHTS SOLD, TOURIST ARRIVALS, 2002 - 2005

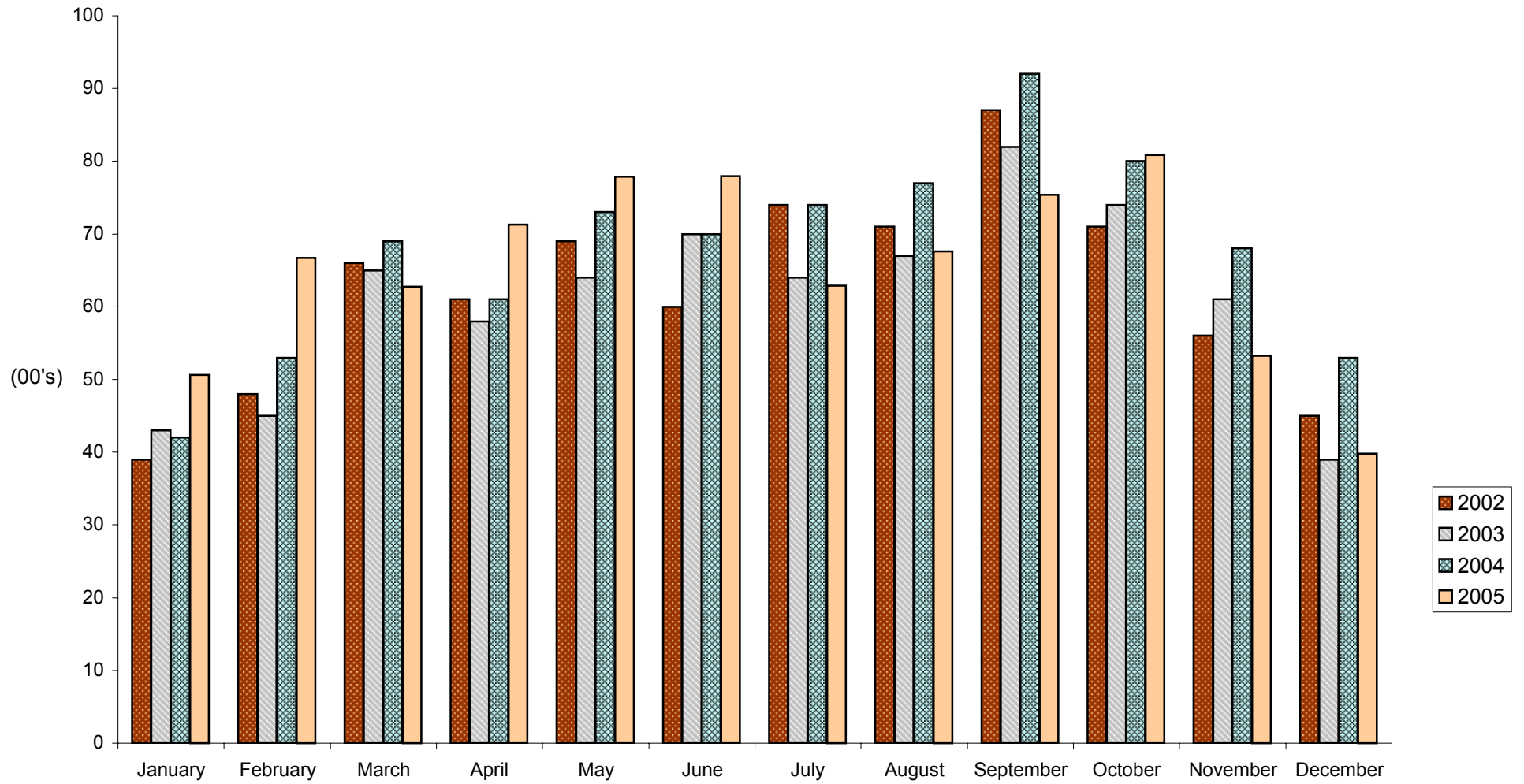


Table 3(a): % Room Occupancy Rates, 1995 - 1999

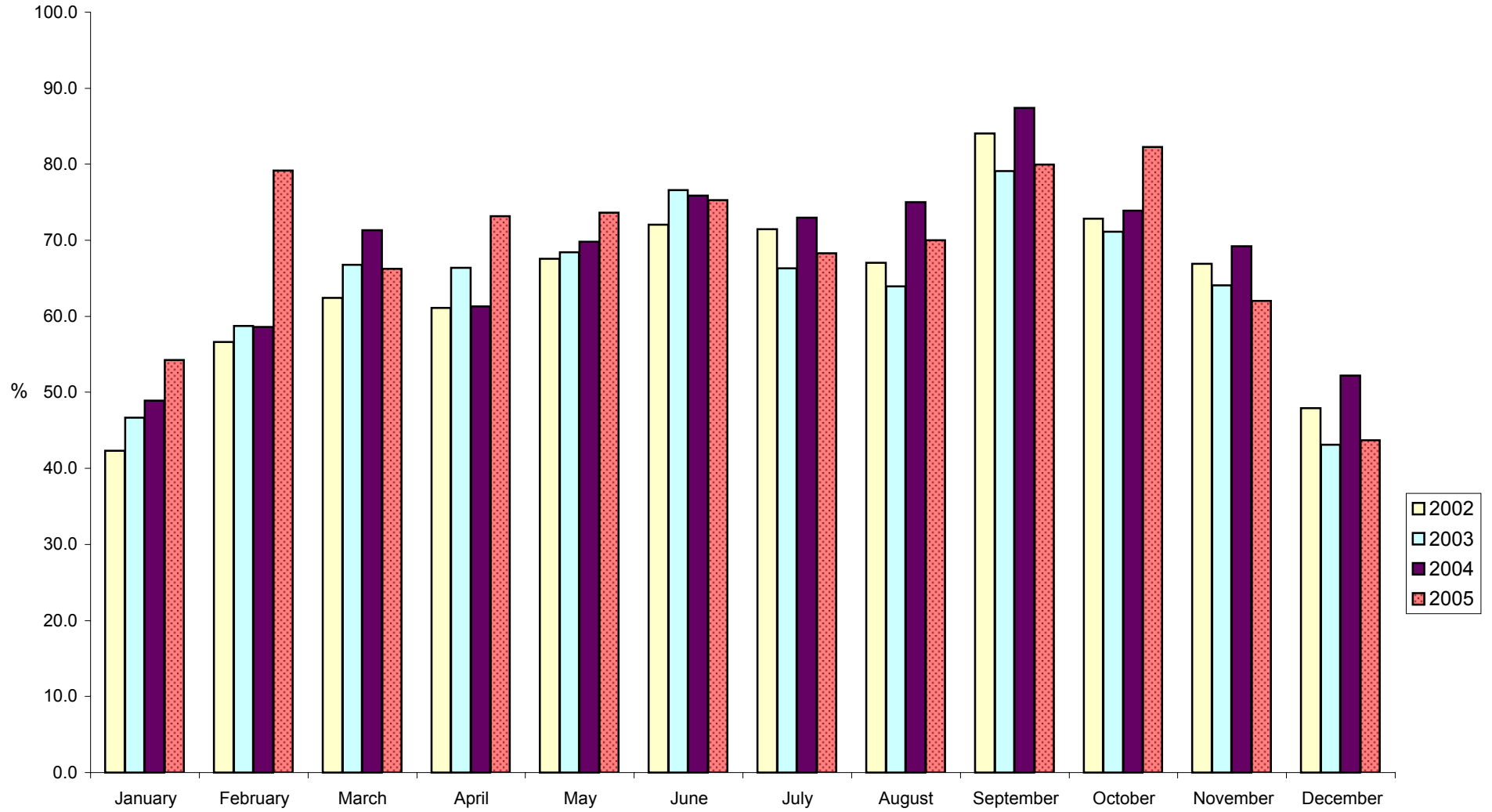
<u>MONTH</u>	<u>ALL ARRIVALS</u>					<u>TOURIST ARRIVALS</u>				
	<u>1995</u>	<u>1996</u>	<u>1997</u>	<u>1998</u>	<u>1999</u>	<u>1995</u>	<u>1996</u>	<u>1997</u>	<u>1998</u>	<u>1999</u>
JANUARY	23.1	30.4	28.6	34.8	38.7	16.2	16.3	14.8	23.1	21.9
FEBRUARY	39.7	34.2	39.9	44.7	43.9	26.2	21.8	23.4	29.4	26.9
MARCH	42.1	42.6	41.7	48.3	58.4	30.8	26.9	26.3	36.0	34.0
APRIL	52.7	44.2	43.3	51.4	56.5	38.8	30.1	25.1	33.5	32.9
MAY	50.3	49.3	51.5	61.6	54.5	35.4	31.7	31.5	40.4	34.4
JUNE	54.2	51.8	52.2	58.9	59.7	41.2	32.6	30.0	37.7	37.1
JULY	56.0	41.0	48.3	55.7	54.6	38.1	27.4	27.0	34.6	32.6
AUGUST	51.4	44.5	54.3	65.1	65.4	37.3	29.7	30.2	42.4	40.2
SEPTEMBER	64.4	59.0	62.5	69.4	69.9	51.0	34.3	35.0	47.0	43.9
OCTOBER	48.5	49.4	56.1	59.3	64.9	38.7	30.2	28.2	39.5	41.6
NOVEMBER	35.2	37.0	50.7	55.1	62.0	27.0	22.5	25.4	32.2	35.0
DECEMBER	31.7	36.2	38.9	39.7	35.1	24.5	20.4	19.7	23.1	22.4
TOTAL	46.1	43.3	47.3	53.6	55.3	33.8	27.0	26.3	34.9	33.6

Note: The yearly totals for 1995 and 1996 have been adjusted as a result of a program malfunction in the cumulative totals for those years.

Table 3(b): % Room Occupancy Rates, 2000 - 2005

<u>MONTH</u>	<u>ALL ARRIVALS</u>						<u>TOURIST ARRIVALS</u>					
	<u>%</u>						<u>%</u>					
	<u>2000</u>	<u>2001</u>	<u>2002</u>	<u>2003</u>	<u>2004</u>	<u>2005</u>	<u>2000</u>	<u>2001</u>	<u>2002</u>	<u>2003</u>	<u>2004</u>	<u>2005</u>
JANUARY	30.6	44.4	42.3	46.7	48.9	54.3	19.6	26.1	25.4	27.2	28.6	32.5
FEBRUARY	41.6	55.1	56.6	58.7	58.6	79.2	24.8	33.7	35.1	31.3	36.5	49.5
MARCH	51.7	67.3	62.4	66.8	71.3	66.2	33.1	39.4	43.3	40.9	43.8	42.2
APRIL	58.6	66.0	61.1	66.4	61.3	73.2	38.3	35.8	41.2	37.9	39.8	48.9
MAY	82.2	71.6	67.6	68.4	69.8	73.6	50.9	42.6	45.5	40.5	46.1	50.7
JUNE	72.2	75.3	72.0	76.6	75.9	75.3	44.4	48.2	40.8	45.5	45.5	54.6
JULY	63.6	67.0	71.4	66.3	73.0	68.3	39.6	44.5	47.1	40.9	46.9	42.5
AUGUST	61.9	66.0	67.0	63.9	75.0	70.0	42.9	44.7	44.8	42.5	48.8	46.1
SEPTEMBER	80.5	80.7	84.0	79.1	87.4	80.0	54.2	55.2	56.8	53.6	59.8	53.0
OCTOBER	64.8	73.3	72.9	71.1	73.9	82.2	43.4	48.9	44.9	47.1	50.6	55.0
NOVEMBER	52.9	58.8	66.9	64.1	69.2	62.0	33.7	37.2	36.6	40.3	44.2	36.5
DECEMBER	45.0	44.8	47.9	43.1	52.2	43.7	26.8	27.3	28.8	25.1	33.2	24.8
TOTAL	58.9	64.2	64.4	64.2	68.2	68.6	37.7	40.3	40.9	39.4	43.7	44.4

% ROOM OCCUPANCY RATES, ALL ARRIVALS, 2002 - 2005



% ROOM OCCUPANCY RATES, TOURIST ARRIVALS, 2002 - 2005

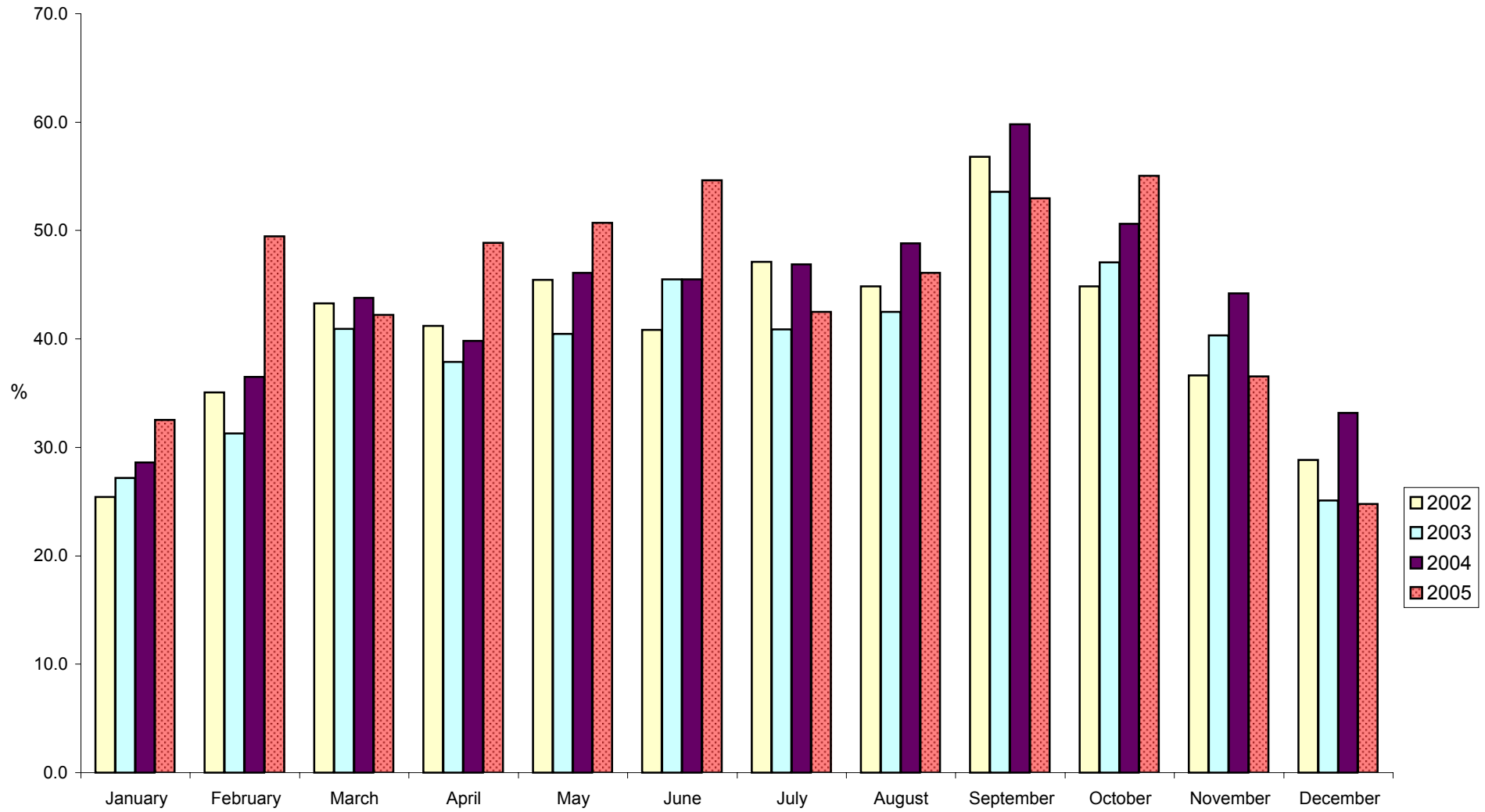


Table 4(a): Number of Arrivals by Month, All Hotels, 1979 - 1985

<u>MONTH</u>	<u>(00's)</u>							<u>(00's)</u>						
	<u>ALL ARRIVALS</u>							<u>TOURIST ARRIVALS</u>						
	<u>1979</u>	<u>1980</u>	<u>1981</u>	<u>1982</u>	<u>1983</u>	<u>1984</u>	<u>1985</u>	<u>1979</u>	<u>1980</u>	<u>1981</u>	<u>1982</u>	<u>1983</u>	<u>1984</u>	<u>1985</u>
JANUARY	21	27	20	16	16	18	26	16	23	16	11	11	11	10
FEBRUARY	38	31	26	25	23	25	45	23	26	21	18	16	13	27
MARCH	40	37	33	37	26	26	49	27	31	26	24	18	17	36
APRIL	28	35	29	34	30	29	46	23	29	24	23	19	16	33
MAY	39	43	29	33	34	38	46	34	32	23	26	21	20	37
JUNE	41	44	28	32	27	28	46	34	27	23	23	20	21	35
JULY	45	34	31	29	31	33	52	39	29	21	23	20	21	38
AUGUST	46	39	32	34	32	34	54	37	34	23	22	21	23	43
SEPTEMBER	47	38	33	33	36	35	54	39	34	25	23	25	26	41
OCTOBER	46	37	31	31	30	40	51	38	31	25	20	19	27	35
NOVEMBER	32	26	23	23	25	30	46	26	20	18	17	16	20	35
DECEMBER	23	22	20	22	21	21	36	18	15	16	15	14	12	24
TOTAL	446	413	334	349	331	357	551	354	331	261	245	220	227	394

Note: Yearly totals have been rounded off and need not necessarily equal the sum of the rounded-off monthly figures.

Table 4(b): Number of Arrivals by Month, All Hotels, 1986 - 1992

<u>MONTH</u>	<u>(00's)</u>							<u>(00's)</u>						
	<u>ALL ARRIVALS</u>							<u>TOURIST ARRIVALS</u>						
	<u>1986</u>	<u>1987</u>	<u>1988</u>	<u>1989</u>	<u>1990</u>	<u>1991</u>	<u>1992</u>	<u>1986</u>	<u>1987</u>	<u>1988</u>	<u>1989</u>	<u>1990</u>	<u>1991</u>	<u>1992</u>
JANUARY	31	41	46	34	34	34	23	24	37	32	24	20	19	16
FEBRUARY	40	46	47	43	41	34	30	29	35	36	35	24	19	22
MARCH	46	63	63	52	79	39	34	38	50	47	41	30	23	27
APRIL	44	62	61	53	84	36	36	36	50	48	41	34	21	28
MAY	57	58	60	46	60	42	40	40	38	46	36	28	24	29
JUNE	51	51	58	50	53	32	41	39	35	40	42	23	21	28
JULY	45	44	54	66	63	39	38	34	36	36	39	31	25	26
AUGUST	52	51	53	59	46	35	36	40	41	36	41	25	24	29
SEPTEMBER	55	62	58	74	58	43	41	44	48	38	44	31	24	26
OCTOBER	50	63	49	77	50	47	39	42	48	36	53	26	25	27
NOVEMBER	49	60	58	67	41	26	28	43	48	36	44	21	16	20
DECEMBER	46	52	42	58	39	25	24	29	34	26	35	20	17	19
TOTAL	566	653	649	679	648	432	410	438	500	457	475	313	260	299

Note: Yearly totals have been rounded off and need not necessarily equal the sum of the rounded-off monthly figures.

Table 4(c): Number of Arrivals by Month, All Hotels, 1993 - 1999

<u>MONTH</u>	<u>(00's)</u>							<u>(00's)</u>						
	<u>ALL ARRIVALS</u>							<u>TOURIST ARRIVALS</u>						
	<u>1993</u>	<u>1994</u>	<u>1995</u>	<u>1996</u>	<u>1997</u>	<u>1998</u>	<u>1999</u>	<u>1993</u>	<u>1994</u>	<u>1995</u>	<u>1996</u>	<u>1997</u>	<u>1998</u>	<u>1999</u>
JANUARY	19	25	20	28	24	30	26	15	17	16	20	15	16	17
FEBRUARY	24	24	28	34	32	28	26	15	17	22	25	19	17	17
MARCH	29	31	34	40	33	31	36	21	21	24	27	19	21	23
APRIL	30	31	40	41	39	34	37	21	21	28	30	22	23	23
MAY	38	39	38	42	48	38	36	26	24	26	26	28	25	25
JUNE	35	33	39	41	47	35	38	24	23	27	26	27	24	25
JULY	33	34	46	38	43	34	34	22	24	33	27	28	23	22
AUGUST	33	33	44	39	55	42	43	25	23	31	30	33	30	28
SEPTEMBER	44	43	57	47	54	40	42	29	29	41	30	31	30	27
OCTOBER	45	39	41	43	39	42	43	29	27	32	31	28	29	30
NOVEMBER	35	25	31	33	38	36	37	23	17	25	22	20	24	23
DECEMBER	25	22	32	35	32	28	24	19	16	25	25	19	18	17
TOTAL	391	379	451	461	484	416	421	270	259	331	319	289	279	277

Note: Yearly totals have been rounded off and need not necessarily equal the sum of the rounded-off monthly figures.

Table 4(d): Number of Arrivals by Month, All Hotels, 2000 - 2005

<u>MONTH</u>	<u>(00's)</u> <u>ALL ARRIVALS</u>						<u>(00's)</u> <u>TOURIST ARRIVALS</u>					
	<u>2000</u>	<u>2001</u>	<u>2002</u>	<u>2003</u>	<u>2004</u>	<u>2005</u>	<u>2000</u>	<u>2001</u>	<u>2002</u>	<u>2003</u>	<u>2004</u>	<u>2005</u>
JANUARY	22	31	32	37	38	40	15	23	23	23	27	28
FEBRUARY	28	33	41	44	44	46	19	24	30	29	30	33
MARCH	39	45	46	54	55	50	28	32	35	36	38	37
APRIL	42	43	45	50	47	51	30	31	32	32	34	36
MAY	48	50	51	56	57	57	35	35	38	35	44	43
JUNE	48	50	43	59	55	51	36	34	30	37	38	38
JULY	40	50	58	52	53	50	29	37	40	35	39	35
AUGUST	46	53	58	59	56	55	35	41	41	41	42	40
SEPTEMBER	56	54	66	58	62	57	41	41	47	40	46	41
OCTOBER	48	51	62	56	56	53	36	38	40	39	41	38
NOVEMBER	39	43	51	54	54	44	29	34	33	35	38	27
DECEMBER	33	35	41	39	39	37	24	25	27	26	28	22
TOTAL	489	538	594	617	617	588	359	394	415	409	445	419

Note: Yearly totals have been rounded off and need not necessarily equal the sum of the rounded-off monthly figures.

ALL ARRIVALS AT HOTELS, 2000 - 2005

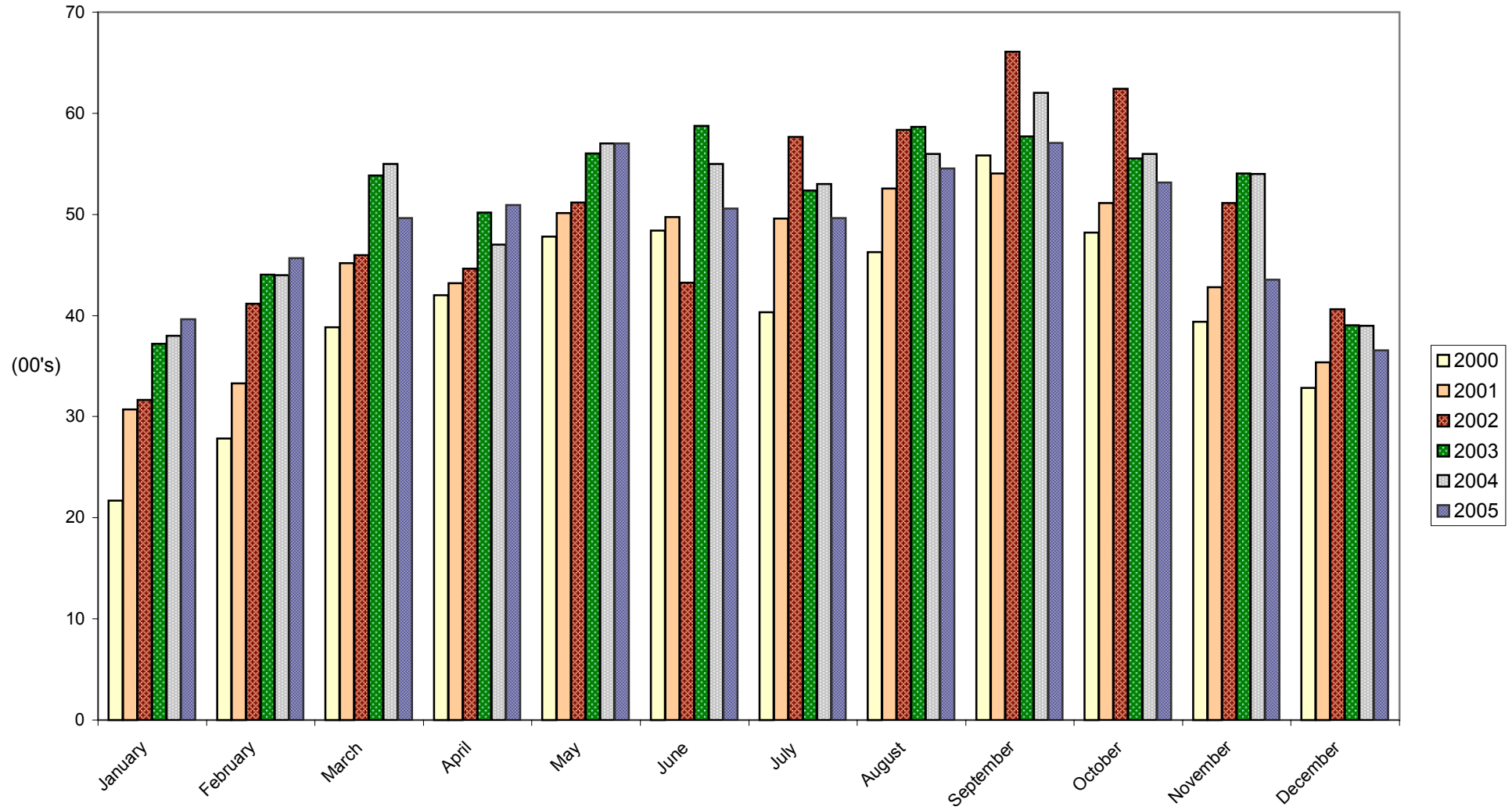


Table 5(a): Guest Nights Sold/Offered, % Sleeper Occupancy, All Hotels, 1979 - 1982

<u>MONTH</u>	<u>ALL ARRIVALS</u>											
	<u>(000's)</u>				<u>(000's)</u>				<u>%</u>			
	<u>GUEST NIGHTS SOLD</u>				<u>GUEST NIGHTS OFFERED</u>				<u>SLEEPER OCCUPANCY</u>			
	<u>1979</u>	<u>1980</u>	<u>1981</u>	<u>1982</u>	<u>1979</u>	<u>1980</u>	<u>1981</u>	<u>1982</u>	<u>1979</u>	<u>1980</u>	<u>1981</u>	<u>1982</u>
JANUARY	10	12	10	9	45	45	44	43	23.3	26.6	23.2	20.2
FEBRUARY	17	14	13	14	42	42	40	40	40.3	32.9	31.9	35.2
MARCH	20	21	17	19	47	46	44	44	43.1	46.4	38.8	42.4
APRIL	17	23	18	22	46	47	44	44	38.0	48.5	40.3	50.5
MAY	24	22	16	23	47	48	44	45	50.9	46.9	37.1	50.0
JUNE	33	28	18	24	47	47	42	45	69.2	60.2	42.0	54.7
JULY	35	26	17	24	48	48	42	46	71.8	53.1	40.2	51.9
AUGUST	37	31	19	24	48	47	43	45	76.9	64.9	43.5	52.0
SEPTEMBER	39	30	19	22	47	47	43	43	82.2	63.0	44.1	51.7
OCTOBER	34	24	18	19	47	46	47	45	73.2	52.2	39.1	42.6
NOVEMBER	18	14	13	12	47	44	42	44	38.8	31.8	30.1	27.9
DECEMBER	12	11	10	11	48	44	44	45	24.7	26.2	23.6	25.6
TOTAL	296	256	188	223	559	551	519	529	53.0	46.5	36.2	42.2

Note: Yearly totals have been rounded off and need not necessarily equal the sum of the rounded-off monthly figures.

Table 5(b): Guest Nights Sold/Offered, % Sleeper Occupancy, All Hotels, 1983 - 1986

<u>MONTH</u>	<u>ALL ARRIVALS</u>											
	<u>(000's)</u>				<u>(000's)</u>				<u>%</u>			
	<u>GUEST NIGHTS SOLD</u>				<u>GUEST NIGHTS OFFERED</u>				<u>SLEEPER OCCUPANCY</u>			
	<u>1983</u>	<u>1984</u>	<u>1985</u>	<u>1986</u>	<u>1983</u>	<u>1984</u>	<u>1985</u>	<u>1986</u>	<u>1983</u>	<u>1984</u>	<u>1985</u>	<u>1986</u>
JANUARY	9	9	11	13	45	46	45	43	19.0	20.7	24.3	30.1
FEBRUARY	11	13	18	15	41	43	41	38	27.7	30.0	42.7	39.0
MARCH	16	15	25	21	46	47	46	43	34.8	32.5	54.0	48.7
APRIL	16	18	25	18	45	45	45	42	35.9	39.9	56.8	42.0
MAY	20	23	23	25	46	46	47	45	43.2	50.5	50.3	57.2
JUNE	23	23	31	29	45	45	45	43	49.7	50.8	69.4	67.9
JULY	20	22	28	23	47	45	48	44	42.3	50.1	58.0	51.8
AUGUST	25	25	32	27	47	47	48	46	54.0	53.0	67.7	59.7
SEPTEMBER	25	27	32	29	46	44	46	44	54.6	61.0	68.2	64.8
OCTOBER	21	25	27	26	47	46	48	45	43.7	53.2	55.6	59.3
NOVEMBER	13	15	17	23	45	45	46	43	30.2	32.3	36.9	54.1
DECEMBER	11	11	13	17	46	47	47	44	24.4	22.9	27.3	38.5
TOTAL	210	226	282	266	546	546	552	520	38.4	41.3	51.0	51.3

Note: Yearly totals have been rounded off and need not necessarily equal the sum of the rounded-off monthly figures.

Table 5(c): Guest Nights Sold/Offered, % Sleeper Occupancy, All Hotels, 1987 - 1990

<u>MONTH</u>	<u>ALL ARRIVALS</u>											
	<u>(000's)</u>				<u>(000's)</u>				<u>%</u>			
	<u>GUEST NIGHTS SOLD</u>				<u>GUEST NIGHTS OFFERED</u>				<u>SLEEPER OCCUPANCY</u>			
	<u>1987</u>	<u>1988</u>	<u>1989</u>	<u>1990</u>	<u>1987</u>	<u>1988</u>	<u>1989</u>	<u>1990</u>	<u>1987</u>	<u>1988</u>	<u>1989</u>	<u>1990</u>
JANUARY	19	16	15	11	46	46	42	37	42.1	35.8	35.2	31.2
FEBRUARY	18	19	18	14	42	44	40	37	43.9	42.6	46.0	37.3
MARCH	26	26	22	19	46	48	42	42	57.5	53.6	52.0	45.3
APRIL	24	26	23	23	43	45	42	41	55.6	57.1	54.8	55.4
MAY	25	26	19	21	45	47	44	42	55.7	55.1	41.9	50.4
JUNE	22	29	19	15	44	47	43	39	49.1	61.6	43.9	37.3
JULY	20	27	20	18	45	48	43	42	44.5	55.8	46.8	43.8
AUGUST	26	24	19	15	45	48	43	41	57.7	50.4	45.1	35.2
SEPTEMBER	29	26	19	18	45	44	42	41	65.6	60.4	46.0	44.4
OCTOBER	26	26	19	18	44	46	40	40	58.8	56.4	46.2	44.5
NOVEMBER	24	22	14	12	44	43	38	40	54.4	51.4	38.2	30.2
DECEMBER	20	19	13	13	46	45	42	39	42.5	42.6	31.2	32.4
TOTAL	279	286	220	197	535	551	501	481	52.3	52.0	44.0	40.8

Note: Yearly totals have been rounded off and need not necessarily equal the sum of the rounded-off monthly figures.

Table 5(d): Guest Nights Sold/Offered, % Sleeper Occupancy, All Hotels, 1991 - 1994

<u>MONTH</u>	<u>ALL ARRIVALS</u>											
	<u>(000's)</u>				<u>(000's)</u>				<u>%</u>			
	<u>GUEST NIGHTS SOLD</u>				<u>GUEST NIGHTS OFFERED</u>				<u>SLEEPER OCCUPANCY</u>			
	<u>1991</u>	<u>1992</u>	<u>1993</u>	<u>1994</u>	<u>1991</u>	<u>1992</u>	<u>1993</u>	<u>1994</u>	<u>1991</u>	<u>1992</u>	<u>1993</u>	<u>1994</u>
JANUARY	12	9	7	10	40	42	33	34	29.4	20.6	21.5	29.4
FEBRUARY	13	9	9	9	37	41	30	30	34.5	22.8	30.1	31.3
MARCH	17	14	12	12	44	46	33	33	37.5	29.6	36.2	37.2
APRIL	14	14	12	12	41	42	32	31	34.0	32.6	38.3	39.2
MAY	17	15	16	15	41	43	34	35	40.2	35.6	45.6	42.5
JUNE	16	16	15	14	44	47	32	33	35.8	34.8	48.0	40.6
JULY	16	16	14	15	43	45	32	35	37.9	35.2	41.8	42.4
AUGUST	16	14	14	13	40	44	33	35	41.2	32.2	44.0	37.0
SEPTEMBER	17	16	18	16	44	41	32	33	39.2	39.7	56.2	48.9
OCTOBER	18	15	17	15	43	42	34	35	42.5	34.6	50.9	43.9
NOVEMBER	13	10	13	9	41	32	32	33	31.1	32.6	39.4	27.8
DECEMBER	10	9	10	9	45	33	33	34	22.4	27.0	29.6	25.2
TOTAL	178	157	157	149	502	497	391	401	35.5	31.6	40.2	37.2

Note: Yearly totals have been rounded off and need not necessarily equal the sum of the rounded-off monthly figures.

Table 5(e): Guest Nights Sold/Offered, % Sleeper Occupancy, All Hotels, 1995 - 1998

<u>MONTH</u>	<u>ALL ARRIVALS</u>											
	<u>(000's)</u>				<u>(000's)</u>				<u>%</u>			
	<u>GUEST NIGHTS SOLD</u>				<u>GUEST NIGHTS OFFERED</u>				<u>SLEEPER OCCUPANCY</u>			
	<u>1995</u>	<u>1996</u>	<u>1997</u>	<u>1998</u>	<u>1995</u>	<u>1996</u>	<u>1997</u>	<u>1998</u>	<u>1995</u>	<u>1996</u>	<u>1997</u>	<u>1998</u>
JANUARY	6	8	8	7	32	32	31	30	19.0	24.9	24.1	24.8
FEBRUARY	10	9	10	9	28	30	29	25	34.9	29.9	34.1	35.4
MARCH	10	12	10	11	31	32	31	28	33.4	36.3	33.0	38.8
APRIL	13	12	11	11	25	31	31	26	49.5	39.1	36.3	42.4
MAY	13	14	14	12	31	32	32	27	41.4	43.0	45.0	45.6
JUNE	14	13	13	13	30	30	30	28	46.3	37.2	44.4	45.9
JULY	15	12	14	13	32	31	31	29	48.2	39.0	44.1	43.9
AUGUST	15	13	16	16	32	31	31	29	46.2	42.3	51.3	54.4
SEPTEMBER	18	16	16	17	31	31	31	28	58.0	51.9	50.7	59.8
OCTOBER	13	13	14	15	32	31	31	29	41.1	42.8	44.1	50.2
NOVEMBER	9	10	10	12	31	30	31	28	28.1	31.3	31.7	43.8
DECEMBER	9	9	9	9	32	31	31	29	26.7	29.0	28.2	32.2
TOTAL	144	141	144	145	369	372	370	335	39.2	37.8	39.0	43.1

Note: Yearly totals have been rounded off and need not necessarily equal the sum of the rounded-off monthly figures.

Table 5(f): Guest Nights Sold/Offered, % Sleeper Occupancy, All Hotels, 1999 - 2002

<u>MONTH</u>	<u>ALL ARRIVALS</u>											
	<u>(000's)</u>				<u>(000's)</u>				<u>%</u>			
	<u>GUEST NIGHTS SOLD</u>				<u>GUEST NIGHTS OFFERED</u>				<u>SLEEPER OCCUPANCY</u>			
	<u>1999</u>	<u>2000</u>	<u>2001</u>	<u>2002</u>	<u>1999</u>	<u>2000</u>	<u>2001</u>	<u>2002</u>	<u>1999</u>	<u>2000</u>	<u>2001</u>	<u>2002</u>
JANUARY	8	6	8	9	29	31	31	31	28.8	20.0	27.0	30.5
FEBRUARY	9	9	11	12	26	29	28	28	34.2	30.4	40.0	42.9
MARCH	13	12	15	15	29	31	31	31	45.5	37.5	47.9	47.7
APRIL	13	14	15	14	29	30	30	30	44.3	45.0	48.4	46.3
MAY	13	19	17	16	29	31	31	31	43.7	60.3	55.0	51.3
JUNE	14	17	18	13	29	30	30	30	49.1	56.6	58.3	43.6
JULY	13	16	17	18	29	31	31	31	44.5	50.2	53.5	56.8
AUGUST	16	16	18	18	29	31	31	31	56.3	51.8	57.4	58.8
SEPTEMBER	16	19	20	21	29	31	30	30	56.9	61.7	64.6	69.3
OCTOBER	15	15	18	19	31	31	31	31	50.0	48.7	57.3	61.3
NOVEMBER	14	12	13	15	30	30	30	30	46.0	38.9	43.5	50.9
DECEMBER	8	11	11	11	31	31	31	31	25.6	34.1	34.1	36.4
TOTAL	154	164	179	182	351	368	366	367	43.8	44.6	48.9	49.7

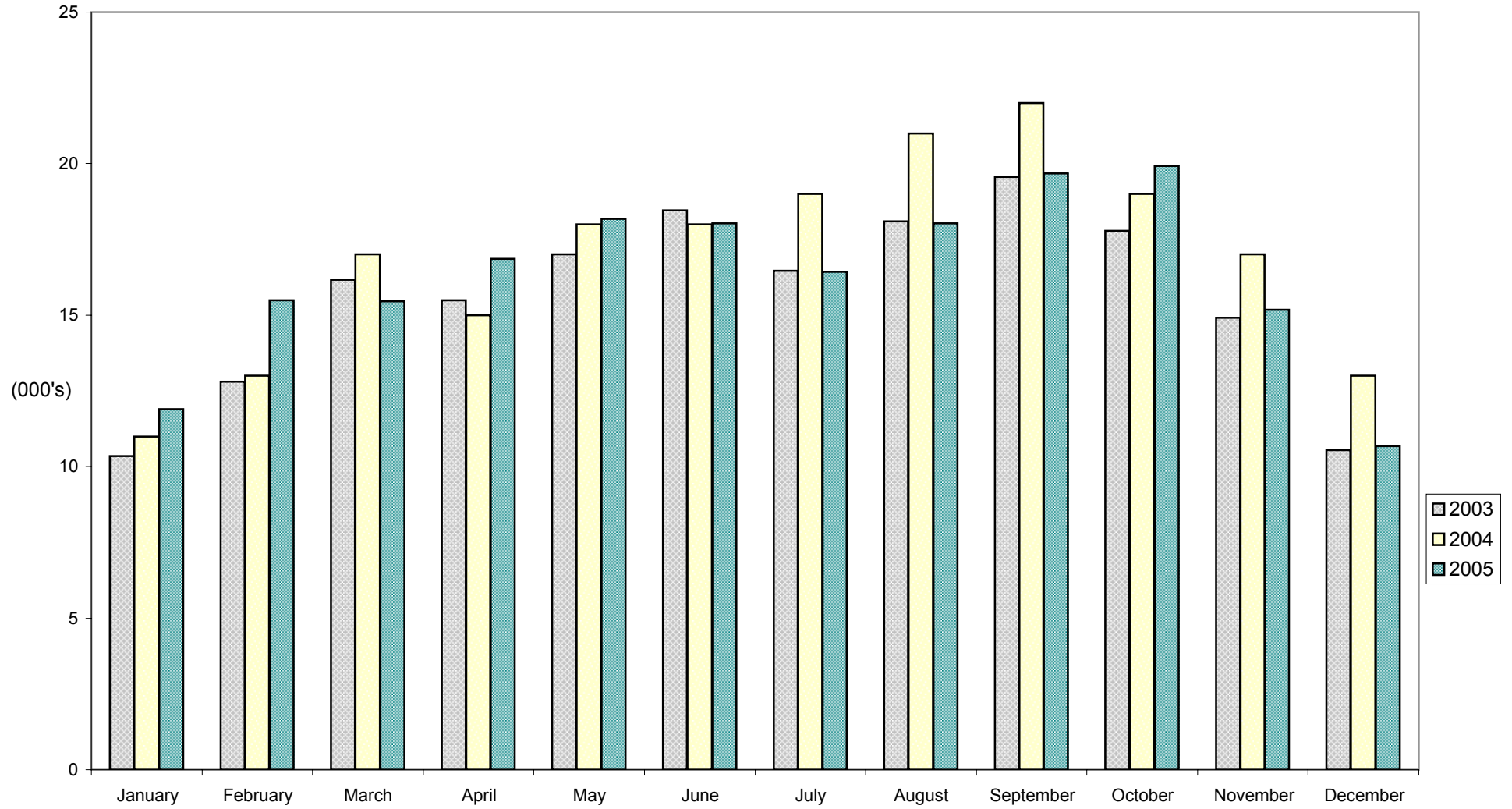
Note: Yearly totals have been rounded off and need not necessarily equal the sum of the rounded-off monthly figures.

Table 5(g): Guest Nights Sold/Offered, % Sleeper Occupancy, All Hotels, 2003 - 2005

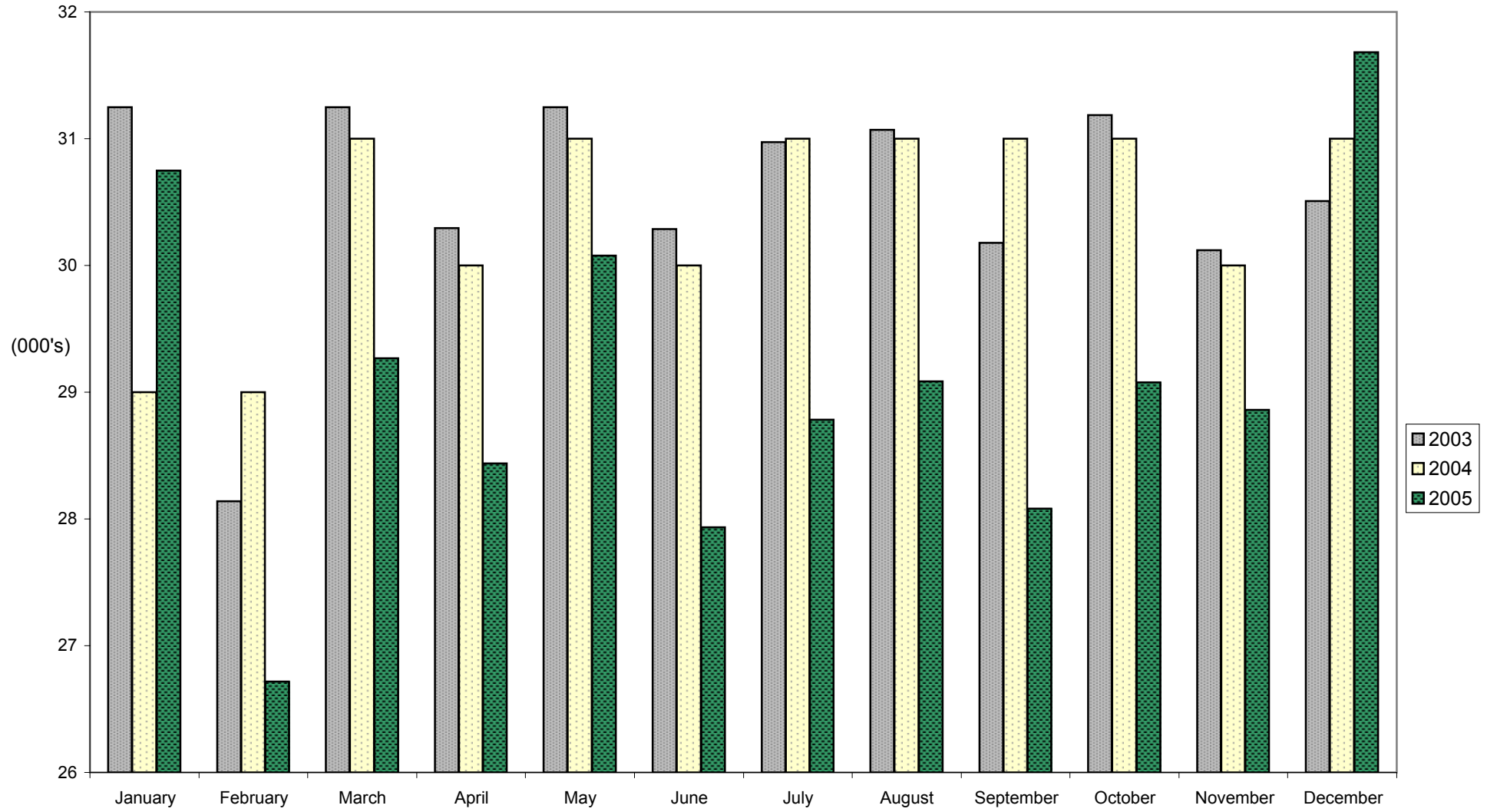
<u>MONTH</u>	<u>ALL ARRIVALS</u>								
	<u>(000's)</u>			<u>(000's)</u>			<u>%</u>		
	<u>GUEST NIGHTS SOLD</u>			<u>GUEST NIGHTS OFFERED</u>			<u>SLEEPER OCCUPANCY</u>		
	<u>2003</u>	<u>2004</u>	<u>2005</u>	<u>2003</u>	<u>2004</u>	<u>2005</u>	<u>2003</u>	<u>2004</u>	<u>2005</u>
JANUARY	10	11	12	31	29	31	33.1	36.7	38.7
FEBRUARY	13	13	15	28	29	27	45.5	45.2	58.0
MARCH	16	17	15	31	31	29	51.8	56.3	52.8
APRIL	15	15	17	30	30	28	51.1	50.0	59.3
MAY	17	18	18	31	31	30	54.4	57.8	60.4
JUNE	18	18	18	30	30	28	60.9	59.4	64.5
JULY	16	19	16	31	31	29	53.2	61.2	57.1
AUGUST	18	21	18	31	31	29	58.2	65.9	62.0
SEPTEMBER	20	22	20	30	31	28	64.8	71.7	70.1
OCTOBER	18	19	20	31	31	29	57.0	60.1	68.5
NOVEMBER	15	17	15	30	30	29	49.5	55.0	52.6
DECEMBER	11	13	11	31	31	32	34.6	40.1	33.7
TOTAL	188	202	196	367	366	349	51.2	55.1	56.2

Note: Yearly totals have been rounded off and need not necessarily equal the sum of the rounded-off monthly figures.

GUEST NIGHTS SOLD, ALL ARRIVALS, 2003 - 2005



GUEST NIGHTS OFFERED, ALL ARRIVALS, 2003 - 2005



% SLEEPER OCCUPANCY, ALL ARRIVALS, 2003 - 2005

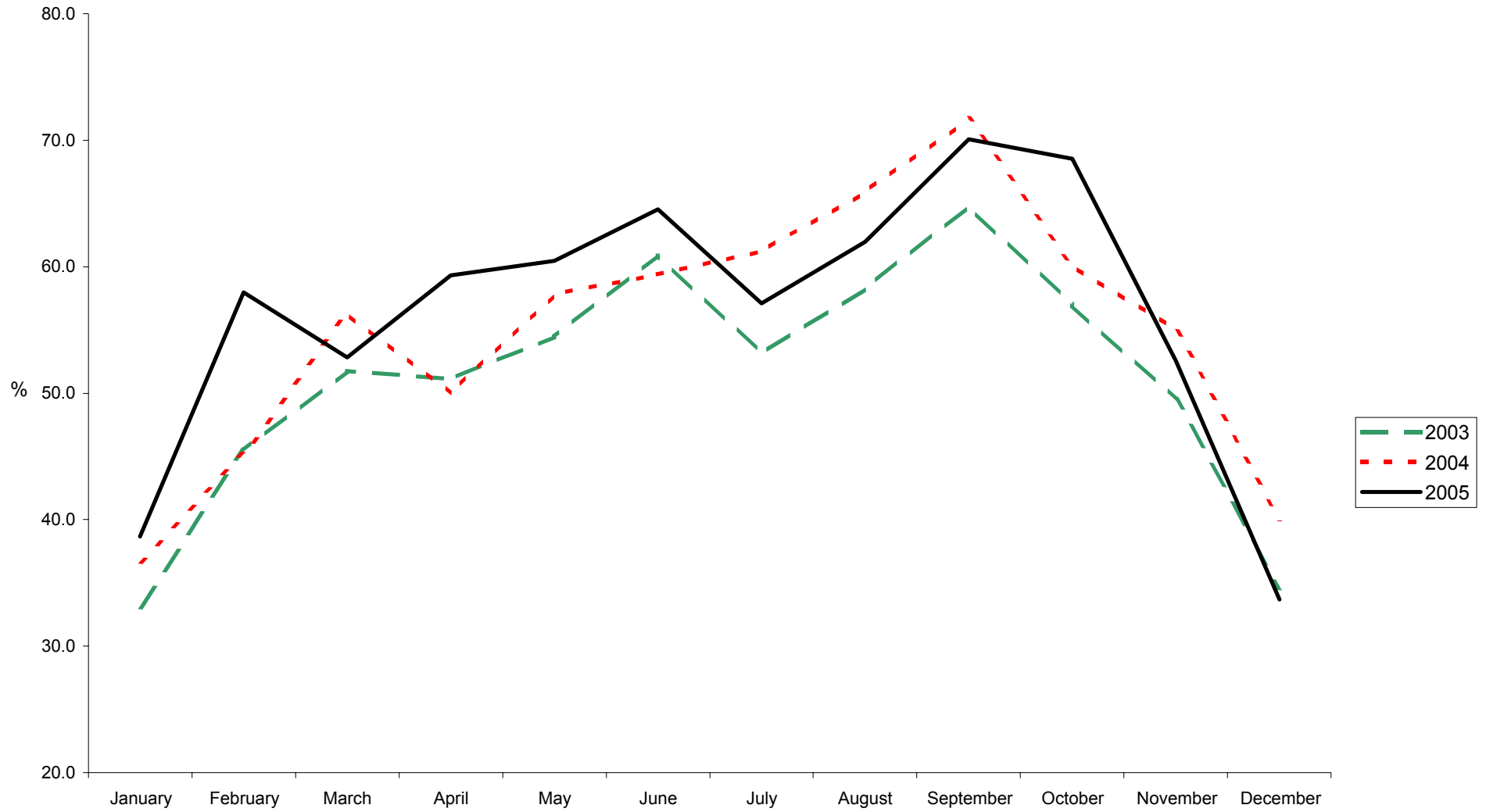


Table 6(a): Guest Nights Sold/Offered, % Sleeper Occupancy, All Hotels, 1979 - 1982

<u>MONTH</u>	<u>TOURIST ARRIVALS</u>											
	<u>(000's)</u>				<u>(000's)</u>				<u>%</u>			
	<u>GUEST NIGHTS SOLD</u>				<u>GUEST NIGHTS OFFERED</u>				<u>SLEEPER OCCUPANCY</u>			
	<u>1979</u>	<u>1980</u>	<u>1981</u>	<u>1982</u>	<u>1979</u>	<u>1980</u>	<u>1981</u>	<u>1982</u>	<u>1979</u>	<u>1980</u>	<u>1981</u>	<u>1982</u>
JANUARY	8	10	8	7	45	45	44	43	18.0	22.2	18.0	15.3
FEBRUARY	11	11	9	10	42	42	40	40	25.3	26.4	21.4	24.8
MARCH	14	17	13	13	47	46	44	44	30.4	36.4	30.4	30.4
APRIL	15	17	14	16	46	47	44	44	31.3	37.1	31.1	36.1
MAY	21	17	13	16	47	48	44	45	44.3	35.9	30.4	35.2
JUNE	27	22	14	19	47	47	42	45	57.4	46.3	32.7	42.2
JULY	30	23	12	19	48	48	42	46	62.7	46.7	28.5	40.5
AUGUST	30	28	15	18	48	47	43	45	63.4	59.3	34.6	40.2
SEPTEMBER	34	25	16	16	47	47	43	43	72.3	53.6	37.2	43.4
OCTOBER	27	21	15	14	47	46	47	45	57.4	45.7	32.1	29.9
NOVEMBER	13	11	10	9	47	44	42	44	27.1	25.1	24.4	21.4
DECEMBER	9	8	8	8	48	44	44	45	19.5	19.2	18.0	18.3
TOTAL	239	210	147	165	559	551	519	529	42.8	38.2	28.3	31.1

Note: Yearly totals have been rounded off and need not necessarily equal the sum of the rounded-off monthly figures.

Table 6(b): Guest Nights Sold/Offered, % Sleeper Occupancy, All Hotels, 1983 - 1986

<u>MONTH</u>	<u>TOURIST ARRIVALS</u>											
	<u>(000's)</u>				<u>(000's)</u>				<u>%</u>			
	<u>GUEST NIGHTS SOLD</u>				<u>GUEST NIGHTS OFFERED</u>				<u>SLEEPER OCCUPANCY</u>			
	<u>1983</u>	<u>1984</u>	<u>1985</u>	<u>1986</u>	<u>1983</u>	<u>1984</u>	<u>1985</u>	<u>1986</u>	<u>1983</u>	<u>1984</u>	<u>1985</u>	<u>1986</u>
JANUARY	7	7	8	10	45	46	45	43	15.5	15.0	16.5	22.1
FEBRUARY	8	8	14	12	41	43	41	38	20.7	19.4	33.8	31.0
MARCH	11	12	19	16	46	47	46	43	24.7	24.6	42.2	38.1
APRIL	10	13	18	13	45	45	45	42	23.4	28.4	40.2	30.7
MAY	14	15	18	19	46	46	47	45	29.4	33.2	39.4	41.9
JUNE	18	18	24	23	45	45	45	43	38.7	40.6	52.9	52.8
JULY	16	18	23	18	47	45	48	44	33.6	40.0	47.5	41.0
AUGUST	19	20	27	21	47	47	48	46	41.9	42.0	57.0	46.3
SEPTEMBER	19	22	26	21	46	44	46	44	41.7	50.2	56.7	48.1
OCTOBER	14	19	19	20	47	46	48	45	30.5	41.0	40.2	45.3
NOVEMBER	10	11	13	18	45	45	46	43	21.2	24.6	28.4	41.7
DECEMBER	9	8	9	12	46	47	47	44	18.4	17.4	18.8	27.5
TOTAL	155	171	218	203	546	546	552	520	28.4	31.3	39.6	38.6

Note: Yearly totals have been rounded off and need not necessarily equal the sum of the rounded-off monthly figures.

Table 6(c): Guest Nights Sold/Offered, % Sleeper Occupancy, All Hotels, 1987 - 1990

<u>MONTH</u>	<u>TOURIST ARRIVALS</u>											
	<u>(000's)</u>				<u>(000's)</u>				<u>%</u>			
	<u>GUEST NIGHTS SOLD</u>				<u>GUEST NIGHTS OFFERED</u>				<u>SLEEPER OCCUPANCY</u>			
	<u>1987</u>	<u>1988</u>	<u>1989</u>	<u>1990</u>	<u>1987</u>	<u>1988</u>	<u>1989</u>	<u>1990</u>	<u>1987</u>	<u>1988</u>	<u>1989</u>	<u>1990</u>
JANUARY	15	13	10	8	46	46	42	37	33.6	27.5	23.7	22.7
FEBRUARY	15	14	13	10	42	44	40	37	34.8	32.2	33.4	27.1
MARCH	21	19	15	13	46	48	42	42	46.3	39.8	36.2	31.0
APRIL	19	20	16	14	43	45	42	41	44.9	44.8	37.0	34.0
MAY	18	19	12	12	45	47	44	42	38.6	40.3	27.9	29.4
JUNE	16	20	14	10	44	47	43	39	36.9	43.5	32.7	24.3
JULY	15	19	13	12	45	48	43	42	34.3	39.2	30.6	27.4
AUGUST	19	17	13	10	45	48	43	41	42.5	34.5	30.6	23.1
SEPTEMBER	22	17	12	12	45	44	42	41	49.7	37.8	29.8	30.0
OCTOBER	21	17	14	11	44	46	40	40	46.4	37.9	34.0	27.8
NOVEMBER	18	14	11	8	44	43	38	40	41.8	32.5	27.6	19.5
DECEMBER	14	11	9	8	46	45	42	39	29.8	24.3	21.7	20.9
TOTAL	213	200	152	128	535	551	501	481	40.0	36.2	30.4	26.5

Note: Yearly totals have been rounded off and need not necessarily equal the sum of the rounded-off monthly figures.

Table 6(d): Guest Nights Sold/Offered, % Sleeper Occupancy, All Hotels, 1991 - 1994

TOURIST ARRIVALS

<u>MONTH</u>	<u>(000's)</u>				<u>(000's)</u>				<u>%</u>			
	<u>GUEST NIGHTS SOLD</u>				<u>GUEST NIGHTS OFFERED</u>				<u>SLEEPER OCCUPANCY</u>			
	<u>1991</u>	<u>1992</u>	<u>1993</u>	<u>1994</u>	<u>1991</u>	<u>1992</u>	<u>1993</u>	<u>1994</u>	<u>1991</u>	<u>1992</u>	<u>1993</u>	<u>1994</u>
JANUARY	7	5	4	7	40	42	33	34	17.7	12.9	12.4	19.5
FEBRUARY	8	6	5	6	37	41	30	30	20.2	15.4	17.7	21.1
MARCH	8	9	8	8	44	46	33	33	19.1	19.3	23.0	24.5
APRIL	9	9	8	9	41	42	32	31	21.9	21.7	25.2	27.1
MAY	10	9	10	10	41	43	34	35	23.3	20.7	28.5	28.5
JUNE	8	10	10	9	44	47	32	33	19.4	22.0	32.7	28.3
JULY	10	10	8	10	43	45	32	35	23.2	21.3	26.2	28.7
AUGUST	8	10	10	8	40	44	33	35	21.3	22.0	30.5	25.6
SEPTEMBER	8	9	12	12	44	41	32	33	18.2	22.7	36.8	35.2
OCTOBER	10	9	11	11	43	42	34	35	23.3	20.8	33.2	30.4
NOVEMBER	7	6	9	7	41	32	32	33	16.4	20.1	27.8	20.6
DECEMBER	6	6	7	6	45	33	33	34	12.9	17.5	21.8	18.9
TOTAL	99	98	103	103	502	497	391	401	19.7	19.8	26.4	25.8

Note: Yearly totals have been rounded off and need not necessarily equal the sum of the rounded-off monthly figures.

Table 6(e): Guest Nights Sold/Offered, % Sleeper Occupancy, All Hotels, 1995 - 1998

<u>MONTH</u>	<u>TOURIST ARRIVALS</u>											
	<u>(000's)</u>				<u>(000's)</u>				<u>%</u>			
	<u>GUEST NIGHTS SOLD</u>				<u>GUEST NIGHTS OFFERED</u>				<u>SLEEPER OCCUPANCY</u>			
	<u>1995</u>	<u>1996</u>	<u>1997</u>	<u>1998</u>	<u>1995</u>	<u>1996</u>	<u>1997</u>	<u>1998</u>	<u>1995</u>	<u>1996</u>	<u>1997</u>	<u>1998</u>
JANUARY	5	5	5	4	32	32	31	30	15.1	16.4	15.2	14.4
FEBRUARY	7	7	6	5	28	30	29	25	25.8	22.8	22.3	21.4
MARCH	8	9	7	7	31	32	31	28	26.4	26.7	21.3	25.8
APRIL	10	10	7	7	25	31	31	26	38.1	30.9	23.9	28.8
MAY	9	10	10	8	31	32	32	27	30.8	30.9	29.9	30.6
JUNE	11	9	9	9	30	30	30	28	37.2	30.5	28.9	30.5
JULY	11	9	9	8	32	31	31	29	36.2	29.3	28.6	28.4
AUGUST	11	10	11	10	32	31	31	29	34.8	32.0	34.5	36.5
SEPTEMBER	14	10	11	12	31	31	31	28	45.6	34.3	34.8	41.5
OCTOBER	11	10	9	10	32	31	31	29	34.1	30.9	28.3	34.6
NOVEMBER	7	7	6	8	31	30	31	28	23.8	21.5	20.9	27.1
DECEMBER	7	6	6	6	32	31	31	29	21.8	20.7	18.9	19.5
TOTAL	113	101	95	95	369	372	370	335	30.7	27.2	25.6	28.2

Note: Yearly totals have been rounded off and need not necessarily equal the sum of the rounded-off monthly figures.

Table 6(f): Guest Nights Sold/Offered, % Sleeper Occupancy, All Hotels, 1999 - 2002

TOURIST ARRIVALS

<u>MONTH</u>	<u>(000's)</u>				<u>(000's)</u>				<u>%</u>			
	<u>GUEST NIGHTS SOLD</u>				<u>GUEST NIGHTS OFFERED</u>				<u>SLEEPER OCCUPANCY</u>			
	<u>1999</u>	<u>2000</u>	<u>2001</u>	<u>2002</u>	<u>1999</u>	<u>2000</u>	<u>2001</u>	<u>2002</u>	<u>1999</u>	<u>2000</u>	<u>2001</u>	<u>2002</u>
JANUARY	5	4	6	6	29	31	31	31	17.2	13.0	19.3	20.4
FEBRUARY	6	6	8	8	26	29	28	28	21.8	20.0	26.9	28.8
MARCH	8	8	9	11	29	31	31	31	27.7	25.9	30.7	34.5
APRIL	8	9	9	10	29	30	30	30	27.3	30.8	29.1	33.0
MAY	9	12	11	11	29	31	31	31	30.0	39.1	34.9	36.5
JUNE	9	11	12	10	29	30	30	30	31.4	36.6	39.5	33.0
JULY	8	10	11	12	29	31	31	31	27.6	33.4	37.0	38.7
AUGUST	10	12	12	13	29	31	31	31	35.2	37.6	40.0	40.7
SEPTEMBER	10	14	14	15	29	31	30	30	36.2	44.3	46.3	48.7
OCTOBER	11	10	13	13	31	31	31	31	34.3	31.6	40.6	40.9
NOVEMBER	9	8	9	9	30	30	30	30	28.8	26.7	29.6	29.8
DECEMBER	5	7	7	7	31	31	31	31	17.3	21.6	22.1	22.9
TOTAL	98	111	121	125	351	368	366	367	27.9	30.1	33.0	34.0

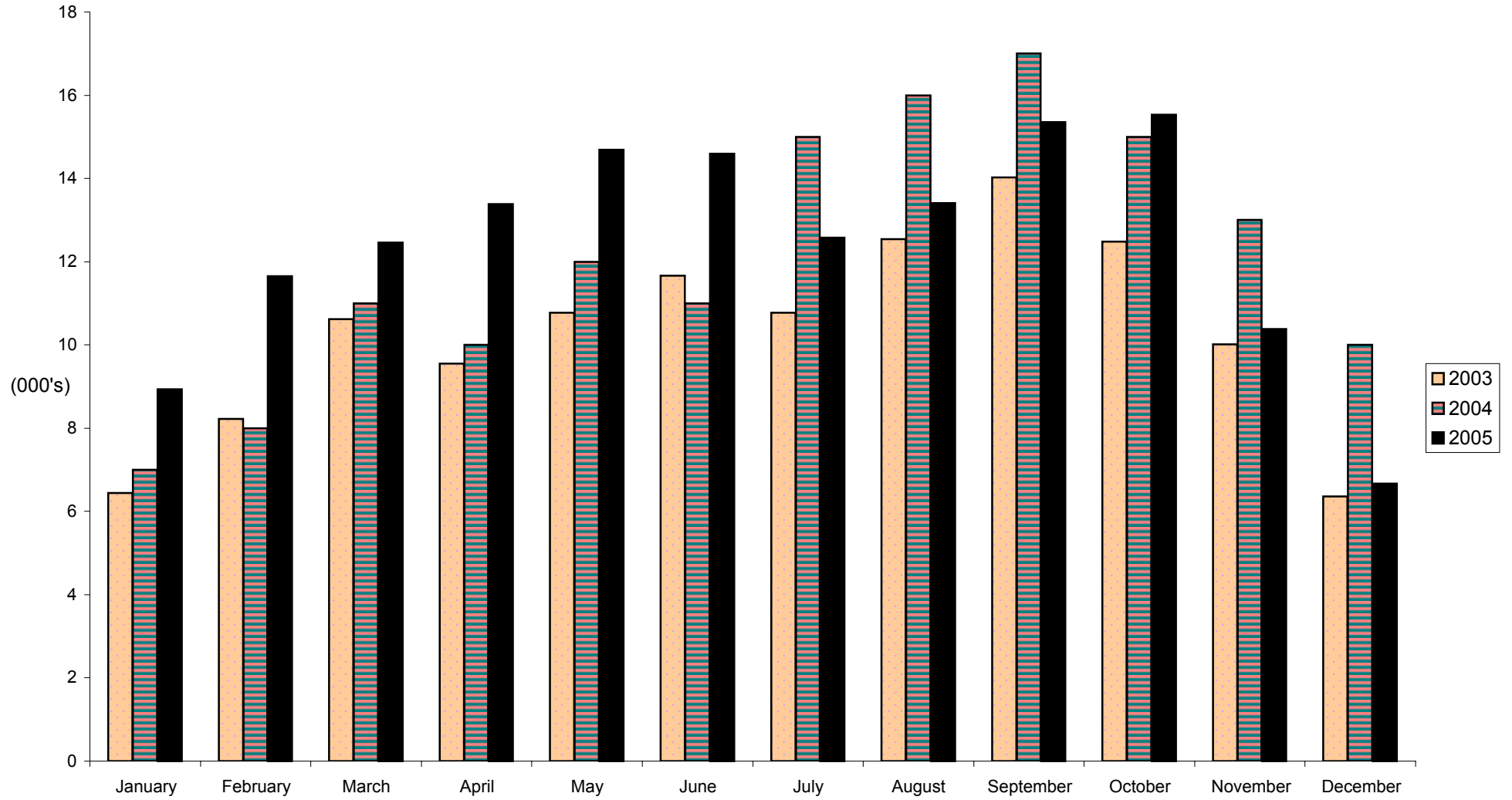
Note: Yearly totals have been rounded off and need not necessarily equal the sum of the rounded-off monthly figures.

Table 6(g): Guest Nights Sold/Offered, % Sleeper Occupancy, All Hotels, 2003 - 2005

<u>MONTH</u>	<u>TOURIST ARRIVALS</u>								
	<u>(000's)</u>			<u>(000's)</u>			<u>%</u>		
	<u>GUEST NIGHTS SOLD</u>			<u>GUEST NIGHTS OFFERED</u>			<u>SLEEPER OCCUPANCY</u>		
	<u>2003</u>	<u>2004</u>	<u>2005</u>	<u>2003</u>	<u>2004</u>	<u>2005</u>	<u>2003</u>	<u>2004</u>	<u>2005</u>
JANUARY	6	7	9	31	29	31	20.6	22.9	29.1
FEBRUARY	8	8	12	28	29	27	29.2	27.9	43.6
MARCH	11	11	12	31	31	29	34.0	37.0	42.6
APRIL	10	10	13	30	30	28	31.5	33.9	47.1
MAY	11	12	15	31	31	30	34.5	39.6	48.8
JUNE	12	11	15	30	30	28	38.5	37.4	52.2
JULY	11	15	13	31	31	29	34.8	47.4	43.7
AUGUST	13	16	13	31	31	29	40.4	50.7	46.1
SEPTEMBER	14	17	15	30	31	28	46.5	55.2	54.7
OCTOBER	12	15	16	31	31	29	40.0	48.2	53.4
NOVEMBER	10	13	10	30	30	29	33.2	41.5	36.0
DECEMBER	6	10	7	31	31	32	20.9	30.4	21.1
TOTAL	123	145	150	367	366	349	33.7	39.5	42.9

Note: Yearly totals have been rounded off and need not necessarily equal the sum of the rounded-off monthly figures.

GUEST NIGHTS SOLD, TOURIST ARRIVALS, 2003 - 2005



% SLEEPER OCCUPANCY, TOURIST ARRIVALS, 2003 - 2005

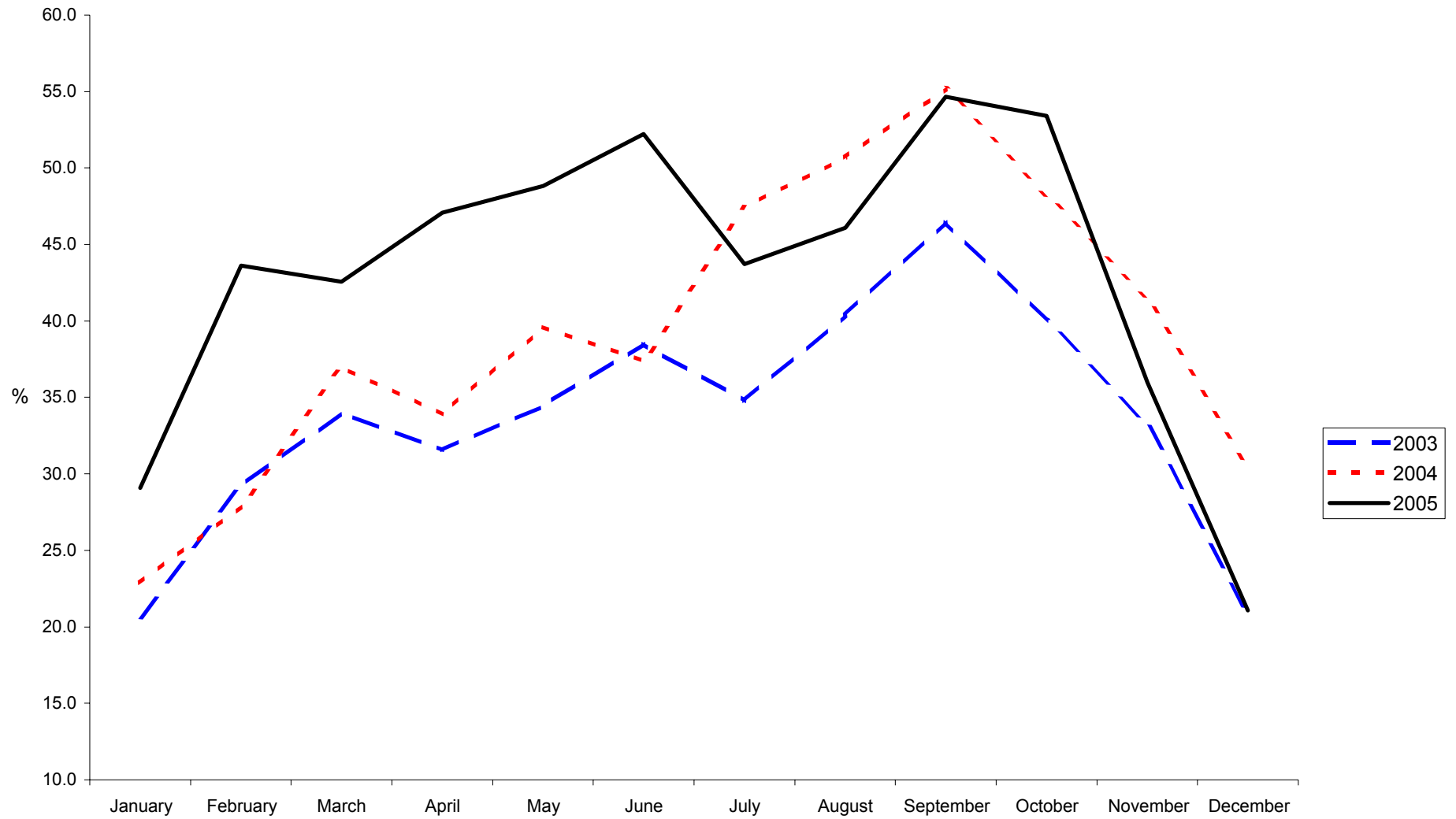


Table 7(a): Average Length of Stay Per Person (Nights), All Hotels, 1979 - 2005

	<u>ALL ARRIVALS</u>												
<u>YEAR</u>	<u>JAN</u>	<u>FEB</u>	<u>MAR</u>	<u>APR</u>	<u>MAY</u>	<u>JUN</u>	<u>JUL</u>	<u>AUG</u>	<u>SEP</u>	<u>OCT</u>	<u>NOV</u>	<u>DEC</u>	<u>TOTAL</u>
1979	5.0	4.5	5.0	6.2	6.2	8.0	7.7	7.9	8.3	7.5	5.6	5.2	6.6
1980	4.5	4.5	5.8	6.5	5.2	6.5	7.6	7.9	7.8	6.4	5.2	5.3	6.2
1981	5.1	4.9	5.2	6.0	5.7	6.4	5.5	5.9	5.8	5.8	5.5	5.1	5.6
1982	5.6	5.6	5.1	6.5	6.3	7.6	8.2	6.9	6.7	6.3	5.3	5.2	6.4
1983	5.3	5.0	6.0	5.4	5.8	8.3	6.4	7.9	7.0	7.0	5.4	5.4	6.3
1984	5.3	5.2	5.9	6.2	6.1	8.0	6.8	7.4	7.7	6.1	4.9	5.1	6.3
1985	4.3	3.9	5.1	5.5	5.1	6.7	5.3	6.0	5.8	5.2	3.7	3.6	5.1
1986	4.3	3.7	4.6	4.0	4.5	5.7	5.0	5.2	5.2	5.3	4.8	3.7	4.6
1987	4.7	4.0	4.2	3.9	4.4	4.2	4.6	5.1	4.7	4.1	4.0	3.7	4.3
1988	3.6	4.1	4.1	4.3	4.3	4.9	5.0	4.6	4.6	5.2	3.8	4.6	4.4
1989	4.4	4.2	4.2	4.3	4.0	3.7	3.0	3.3	2.6	2.4	2.2	2.2	3.2
1990	3.3	3.4	2.4	2.7	3.5	2.8	2.9	3.2	3.1	3.6	3.0	3.3	3.0
1991	3.5	3.8	4.3	3.9	4.0	5.0	4.2	4.7	4.0	3.9	4.8	3.9	4.1
1992	3.7	3.1	4.0	3.8	3.9	4.0	4.2	3.9	3.9	3.7	3.7	3.7	3.8
1993	3.7	3.8	4.1	4.1	4.1	4.3	4.1	4.4	4.1	3.8	3.6	4.3	4.0
1994	4.0	4.0	4.0	4.0	3.8	4.0	4.4	3.9	3.8	3.9	3.7	3.8	3.9
1995	3.0	3.6	3.1	3.1	3.3	3.6	3.3	3.4	3.2	3.2	2.8	2.7	3.2
1996	2.8	2.6	2.9	3.0	3.2	3.3	3.2	3.4	3.4	3.1	2.9	2.6	3.1
1997	3.1	3.0	3.1	2.9	3.0	2.9	3.2	2.9	2.9	3.5	2.6	2.7	3.0
1998	2.5	3.2	3.5	3.2	3.3	3.7	3.7	3.7	4.2	3.5	3.5	3.3	3.5
1999	3.3	3.5	3.7	3.5	3.6	3.8	3.8	3.8	3.9	3.6	3.8	3.3	3.7
2000	2.9	3.2	3.0	3.2	3.9	3.5	3.9	3.5	3.4	3.1	3.0	3.2	3.4
2001	2.7	3.4	3.3	3.4	3.4	3.5	3.3	3.4	3.6	3.5	3.5	3.1	3.3
2002	3.0	2.9	3.2	3.1	3.1	3.0	3.1	3.1	3.2	3.1	3.0	2.8	3.1
2003	2.8	2.9	3.0	3.1	3.0	3.1	3.1	3.1	3.4	3.2	2.8	2.7	3.0
2004	2.9	2.9	3.2	3.2	3.1	3.2	3.6	3.7	3.5	3.4	3.1	3.2	3.3
2005	3.0	3.4	3.1	3.3	3.2	3.6	3.3	3.3	3.5	3.8	3.5	2.9	3.3

AVERAGE LENGTH OF STAY, ALL ARRIVALS, 2003 - 2005

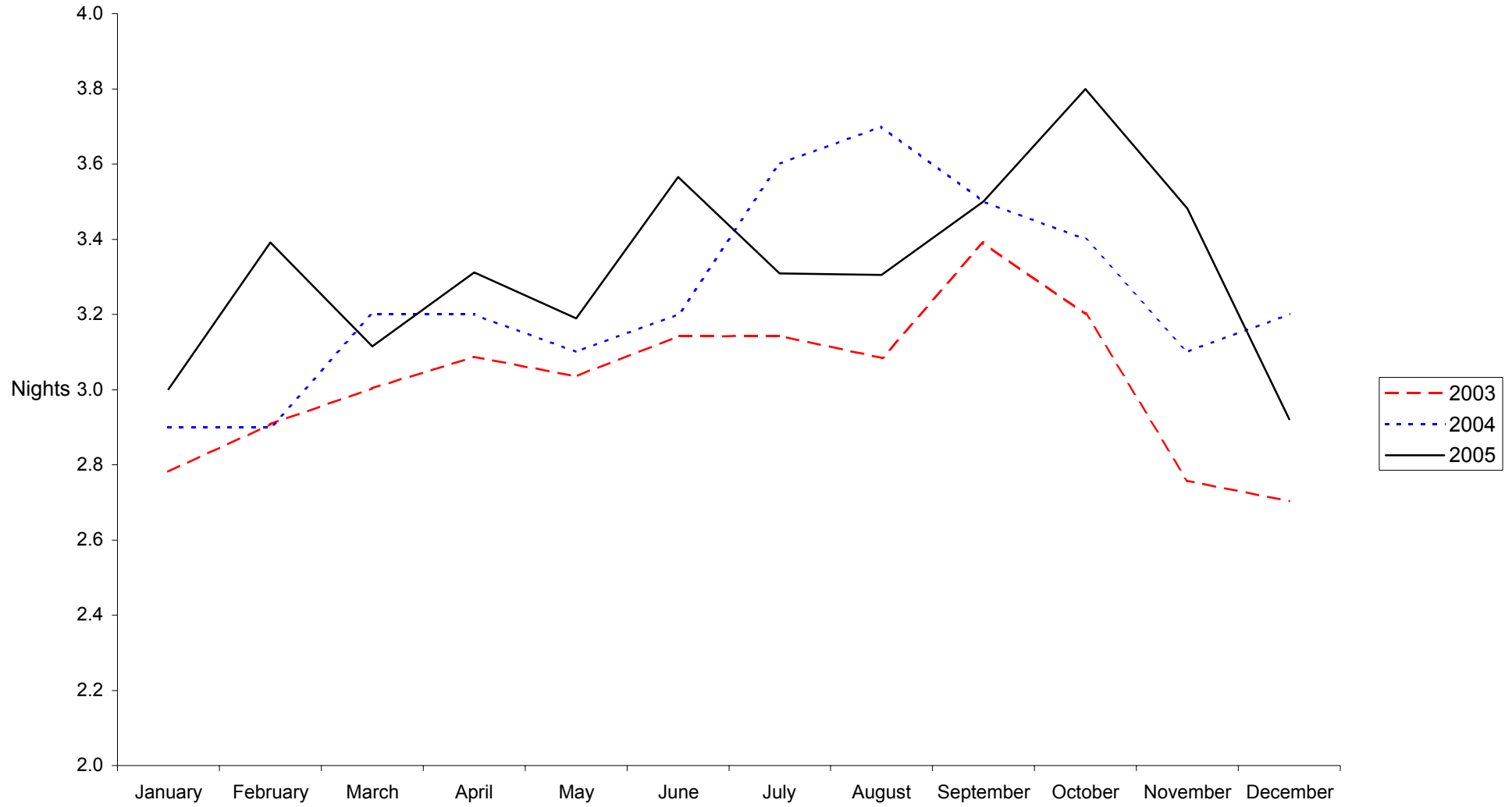


Table 7(b): Average Length of Stay Per Person (Nights), All Hotels, 1979 - 2005

TOURIST ARRIVALS

<u>YEAR</u>	<u>JAN</u>	<u>FEB</u>	<u>MAR</u>	<u>APR</u>	<u>MAY</u>	<u>JUN</u>	<u>JUL</u>	<u>AUG</u>	<u>SEP</u>	<u>OCT</u>	<u>NOV</u>	<u>DEC</u>	<u>TOTAL</u>
1979	4.9	4.5	5.4	6.3	6.1	7.9	7.7	8.1	8.8	7.2	5.0	5.2	6.8
1980	4.3	4.3	5.5	6.0	5.4	8.0	7.7	8.2	7.5	6.7	5.5	5.6	6.3
1981	5.0	4.1	5.1	5.8	6.3	6.1	5.6	6.4	6.4	5.9	5.7	5.0	5.6
1982	6.1	5.4	5.5	7.0	6.1	8.2	8.0	8.2	10.1	6.7	5.6	5.4	6.7
1983	6.6	5.4	6.2	5.7	6.6	8.4	7.8	9.2	7.7	7.5	5.8	6.3	7.1
1984	6.4	6.3	6.6	8.0	7.8	8.8	8.4	8.7	8.5	7.1	5.7	6.6	7.5
1985	7.3	5.2	5.4	5.4	4.9	6.8	6.0	6.3	6.5	5.5	3.7	3.6	5.5
1986	4.0	4.2	4.3	3.7	4.7	5.8	5.2	5.3	4.8	4.9	4.2	4.1	4.6
1987	4.2	4.1	4.3	3.9	4.6	4.6	4.3	4.6	4.6	4.3	3.8	4.0	4.3
1988	3.9	3.9	4.0	4.3	4.1	5.1	5.2	4.6	4.4	4.9	3.9	4.3	4.4
1989	4.2	3.8	3.7	3.8	3.5	3.4	3.3	3.2	2.8	2.6	2.4	2.6	3.2
1990	4.1	4.3	4.4	4.1	4.3	4.3	3.7	3.8	3.9	4.2	3.7	4.1	4.1
1991	3.8	3.9	3.6	4.3	4.0	4.1	4.0	3.5	3.3	3.9	4.2	3.4	3.8
1992	3.3	2.9	3.3	3.2	3.1	3.6	3.6	3.4	3.6	3.2	3.2	3.0	3.3
1993	2.7	3.5	3.7	3.8	3.8	4.4	3.8	4.1	4.1	3.9	3.8	3.8	3.8
1994	4.0	3.8	3.9	4.0	4.0	4.1	4.2	3.9	4.0	3.9	4.0	3.9	4.0
1995	3.1	3.3	3.4	3.4	3.6	4.2	3.5	3.6	3.4	3.4	3.0	2.8	3.4
1996	2.7	2.8	3.2	3.2	3.8	3.6	3.3	3.3	3.5	3.1	2.9	2.6	3.2
1997	3.2	3.3	3.5	3.4	3.4	3.3	3.2	3.2	3.5	3.1	3.2	3.0	3.3
1998	2.8	3.1	3.4	3.2	3.4	3.5	3.5	3.5	3.9	3.5	3.3	3.0	3.4
1999	3.0	3.4	3.5	3.4	3.5	3.6	3.6	3.6	3.9	3.6	3.8	3.2	3.5
2000	2.6	3.0	2.9	3.1	3.5	3.1	3.5	3.3	3.3	2.7	2.8	2.7	3.1
2001	2.6	3.2	3.0	2.9	3.1	3.5	3.1	3.0	3.4	3.3	2.6	2.6	3.1
2002	2.8	2.7	3.0	3.1	3.0	3.4	3.0	3.1	3.2	3.2	2.7	2.7	3.0
2003	2.8	2.9	3.0	2.9	3.0	3.2	3.1	3.1	3.5	3.2	2.8	2.4	3.0
2004	2.5	2.6	3.0	3.0	2.8	3.0	3.8	3.8	3.7	3.7	3.3	3.4	3.2
2005	3.2	3.6	3.4	3.7	3.4	3.8	3.6	3.3	3.8	4.0	3.8	3.0	3.6

AVERAGE LENGTH OF STAY, TOURIST ARRIVALS, 2003 - 2005

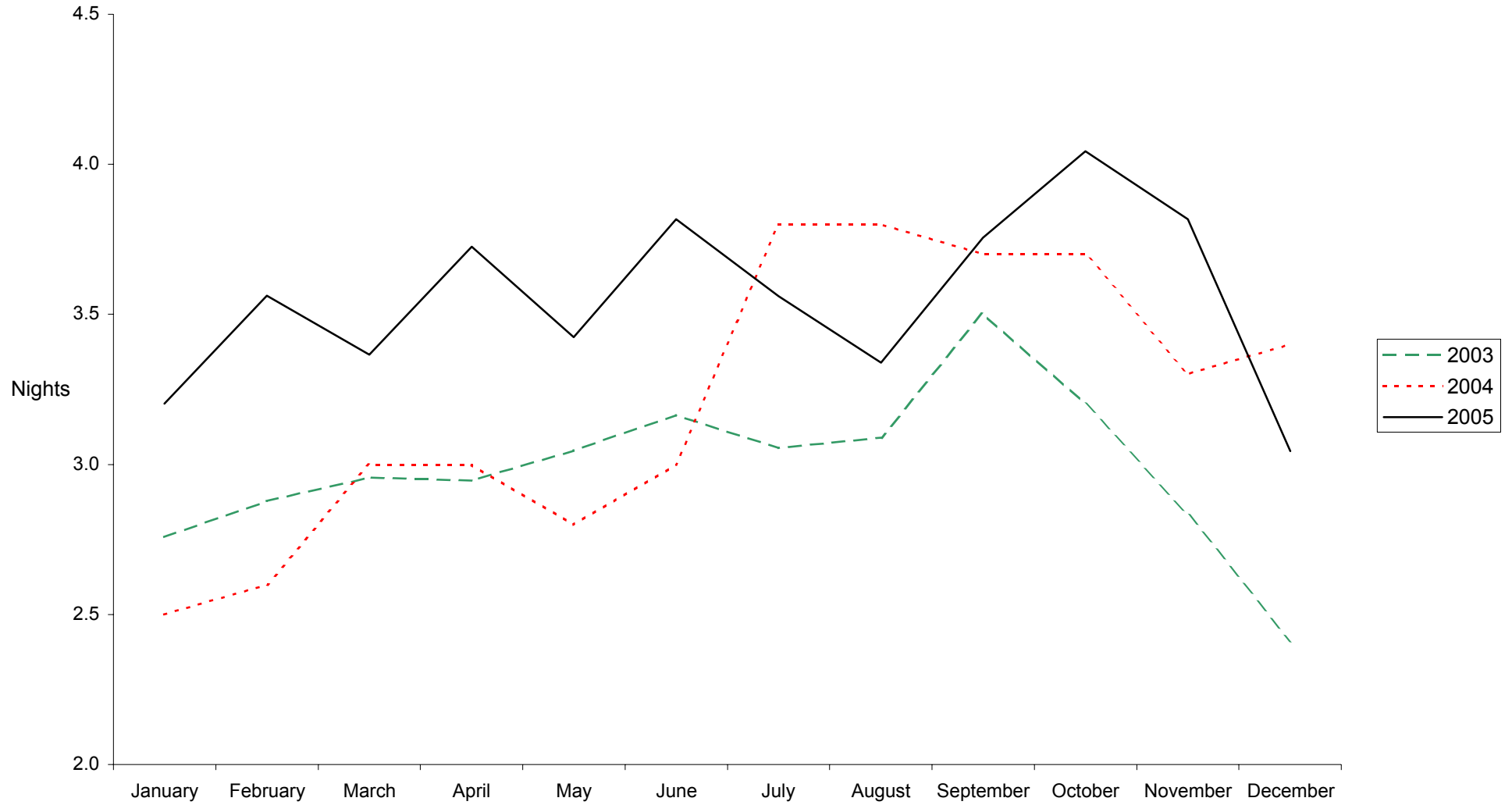
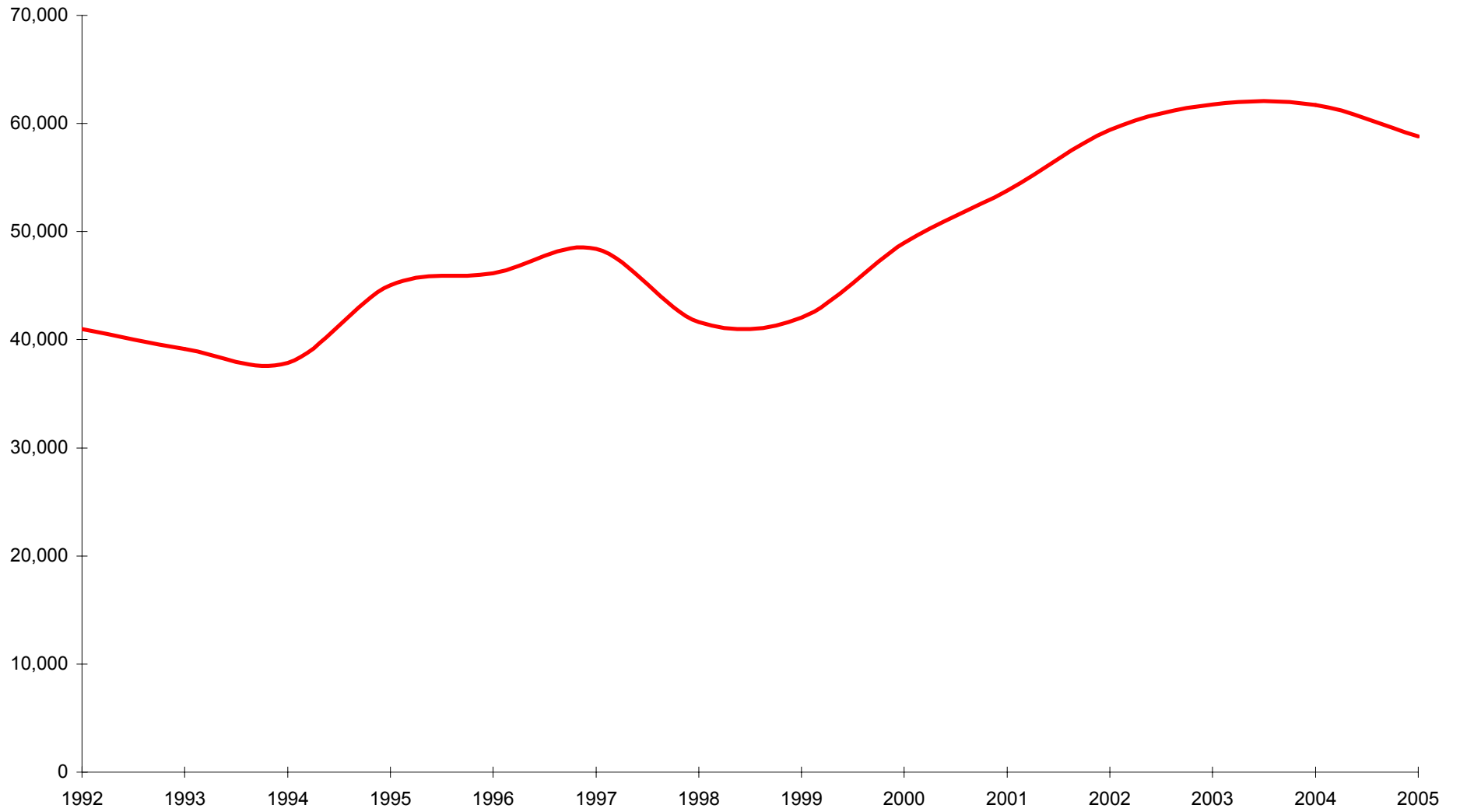


Table 8: Summary of Hotel Statistics, 1972 - 2005

<u>YEAR</u>	<u>ARRIVALS IN HOTELS</u>	<u>SLEEPER NIGHTS</u>	<u>% SLEEPER OCCUPANCY</u>	<u>AV. LENGTH OF STAY (NIGHTS)</u>
1972	33,359	234,228	51.5	7.0
1973	37,012	248,238	51.2	6.7
1974	39,758	271,225	49.5	6.8
1975	45,894	307,913	53.0	6.7
1976	34,933	244,804	43.1	7.0
1977	31,401	207,593	39.4	6.6
1978	39,102	257,295	47.8	6.6
1979	44,569	296,335	53.0	6.6
1980	41,308	255,862	46.5	6.2
1981	33,417	187,679	36.2	5.6
1982	34,896	223,429	42.2	6.4
1983	33,142	209,930	38.4	6.3
1984	35,690	225,873	41.3	6.3
1985	55,119	281,525	51.0	5.1
1986	56,525	266,223	51.3	4.6
1987	64,349	279,377	52.3	4.3
1988	64,942	286,295	52.0	4.4
1989	67,934	220,083	44.0	3.2
1990	64,793	196,516	40.8	3.0
1991	43,193	178,053	35.5	4.1
1992	40,986	156,947	31.6	3.8
1993	39,123	157,215	40.2	4.0
1994	37,851	149,292	37.2	3.9
1995	45,056	144,453	39.2	3.2
1996	46,142	140,596	37.8	3.1
1997	48,420	143,972	39.0	3.0
1998	41,616	144,538	43.1	3.5
1999	42,031	153,583	43.7	3.7
2000	48,949	164,232	44.6	3.4
2001	53,776	178,951	48.9	3.3
2002	59,417	182,444	49.7	3.1
2003	61,743	187,631	51.2	3.0
2004	61,710	201,706	55.1	3.3
2005	58,796	195,827	56.2	3.3

ARRIVALS AT HOTELS, 1992 - 2005



AVERAGE LENGTH OF STAY, 1992 - 2005

