



GOVERNMENT OF GIBRALTAR

**AIR TRAFFIC
SURVEY
2005**

STATISTICS OFFICE



GOVERNMENT OF GIBRALTAR

AIR TRAFFIC SURVEY 2005

STATISTICS OFFICE

Government of Gibraltar
Statistics Office

Statistics Online

Copies of the Air Traffic Survey can be obtained, free of charge from the Statistics Office and are also available electronically on the Gibraltar Government Website www.gibraltar.gov.gi.

Comments and requests for general information should be addressed to:

Statistics Office
99 New Harbours
The New Harbours
Or
E-mail: statistics@gibraltar.gov.gi
Tel: +350 75515/ +350 75490
Fax: +350 51160

- C O N T E N T S -

	<u>PAGE</u>
Preface	1
Definitions	2
Tables and Charts	3 - 40

LIST OF TABLES

Table 1:	Arrivals/Departures by Air from/to U.K. 1981 - 2005	3
Chart	Arrivals by Air from U.K. 1981 - 2005	4
Table 2(a)	Arrivals by Air from U.K. (Scheduled Flights), 1981 - 1984	5
Table 2(b)	Arrivals by Air from U.K. (Scheduled Flights), 1985 - 1988	6
Table 2(c)	Arrivals by Air from U.K. (Scheduled Flights), 1989 - 1992	7
Table 2(d)	Arrivals by Air from U.K. (Scheduled Flights), 1993 - 1996	8
Table 2(e)	Arrivals by Air from U.K. (Scheduled Flights), 1997 - 2000	9
Table 2(f)	Arrivals by Air from U.K. (Scheduled Flights), 2001 - 2004	10
Table 2(g)	Arrivals by Air from U.K. (Scheduled Flights), 2005	11
Chart	Air Arrivals from U.K. (Scheduled Flights), 2005	12
Chart	Arrivals by Air from U.K. (Scheduled Flights), 2005	13
Table 3(a)	Departures by Air to U.K. (Scheduled Flights), 1981 - 1983	14
Table 3(b)	Departures by Air to U.K. (Scheduled Flights), 1984 - 1986	15
Table 3(c)	Departures by Air to U.K. (Scheduled Flights), 1987 - 1989	16
Table 3(d)	Departures by Air to U.K. (Scheduled Flights), 1990 - 1992	17
Table 3(e)	Departures by Air to U.K. (Scheduled Flights), 1993 - 1995	18
Table 3(f)	Departures by Air to U.K. (Scheduled Flights), 1996 - 1998	19
Table 3(g)	Departures by Air to U.K. (Scheduled Flights), 1999 - 2001	20
Table 3(h)	Departures by Air to U.K. (Scheduled Flights), 2002 - 2004	21
Table 3(i)	Departures by Air to U.K. (Scheduled Flights), 2005	22
Chart	Departures by Air to U.K. (Scheduled Flights), 2005	23
Chart	Departures by Air to U.K. (Scheduled Flights), 2005	24
Table 4(a)	Arrivals by Air from U.K. (Charter Flights), 1985 - 1988	25
Table 4(b)	Arrivals by Air from U.K. (Charter Flights), 1989 - 1992	26
Table 4(c)	Arrivals by Air from U.K. (Charter Flights), 1998 - 2001	27
Table 4(d)	Arrivals by Air from U.K. (Charter Flights), 2002 - 2004	28
Table 4(e)	Arrivals by Air (Charter Flights), 2005	29
Table 5(a)	Departures by Air to U.K. (Charter Flights), 1985 - 1988	30
Table 5(b)	Departures by Air to U.K. (Charter Flights), 1989 - 1992	31
Table 5(c)	Departures by Air to U.K. (Charter Flights), 1998 - 2001	32
Table 5(d)	Departures by Air to U.K. (Charter Flights), 2002 - 2004	33
Table 5(e)	Departures by Air (Charter Flights), 2005	34
Table 6(a)	Arrivals by Air from Morocco (Scheduled Flights), 1993 - 1996	35
Table 6(b)	Arrivals by Air from Morocco (Scheduled Flights), 1997 - 2000	36
Table 7(a)	Departures by Air to Morocco (Scheduled Flights), 1993 - 1996	37
Table 7(b)	Departures by Air to Morocco (Scheduled Flights), 1997 - 2000	38
Table 8	Commercial Freight, Set Down/Picked Up, Gibraltar, 1981 - 2005	39
Chart	Commercial Freight, 1981 - 2005	40

A. PREFACE

The Statistics (Air Traffic Survey) Order 1971 requires that a report and summary of the findings of the Air Traffic Survey be laid before the House of Assembly. This is the thirtieth report and contains a summary of statistics collected for the years 1981 to 2005.

The report contains statistical data on air traffic operations between Gibraltar and other destinations for both scheduled and charter airlines. The report also includes some general data on commercial freight.

I must express my thanks to the Airlines and to Terminal Management Ltd for their continued co-operation in the conduct of this Survey.

GOVERNMENT STATISTICIAN

MARCH 2006

B. DEFINITIONS

- (a) Passenger Load Factor: $\frac{\text{All seats used}}{\text{All seats offered (less in-transits)}} \times 100$
- (b) Revenue Load Factor: $\frac{\text{All seats used by "paying" passengers}}{\text{All seats offered (less in-transits)}} \times 100$
- (c) Scheduled Services: are those performed according to a published timetable including those supplementary thereto, and available for use by members of the public.
- (d) Charter Services: includes all air passengers transport flights, other than scheduled services and Ministry of Defence Charters.

Table 1: Arrivals/Departures by Air from/to U.K. 1981 - 2005

YEAR	ARRIVALS (000's)						DEPARTURES (000's)					
	TOTAL		SCHEDULED		CHARTER		TOTAL		SCHEDULED		CHARTER	
	Seats Offered	Seats Used	Seats Offered	Seats Used	Seats Offered	Seats Used	Seats Offered	Seats Used	Seats Offered	Seats Used	Seats Offered	Seats Used
1981	55.6	45.5	29.2	23.6	26.4	21.9	55.7	46.7	29.1	23.4	26.5	23.3
1982	60.0	47.5	35.6	27.0	24.4	20.5	60.0	47.6	35.6	26.7	24.3	20.9
1983	65.6	46.7	40.4	26.3	25.2	20.5	65.6	47.5	40.4	26.8	25.2	20.7
1984	61.3	50.3	34.6	27.4	26.7	22.9	61.2	51.0	34.6	27.6	26.7	23.4
1985	79.0	67.6	59.5	50.3	19.5	17.3	79.0	67.7	59.7	50.0	19.3	17.7
1986	101.7	83.2	96.9	79.1	4.8	4.1	101.8	84.1	96.9	80.1	4.9	4.0
1987	145.9	113.2	129.8	98.1	16.1	15.1	145.4	114.8	129.3	100.9	16.1	13.9
1988	208.7	151.2	196.0	139.6	12.7	11.6	208.3	156.1	195.6	144.6	12.7	11.5
1989	239.4	173.2	231.6	167.6	7.8	5.6	237.8	179.8	230.0	174.0	7.8	5.8
1990	172.0	141.5	165.8	136.8	6.2	4.7	175.1	148.5	168.9	143.8	6.2	4.7
1991	138.1	104.0	126.0	94.9	12.1	9.1	140.2	106.3	127.8	96.6	12.4	9.7
1992	127.4	98.1	127.0	97.7	0.4	0.4	128.2	101.0	127.7	100.5	0.5	0.4
1993	111.5	91.3	111.4	91.2	0.1	0.1	112.2	93.3	112.2	93.3	0.0	0.0
1994	106.4	85.2	106.4	85.2	0.0	0.0	107.1	86.9	207.2	86.9	0.0	0.0
1995	109.4	83.8	109.4	83.8	0.0	0.0	109.5	85.3	109.5	85.3	0.0	0.0
1996	98.7	78.1	98.7	78.1	0.0	0.0	98.1	78.2	98.1	78.2	0.0	0.0
1997	106.6	83.2	106.6	83.2	0.0	0.0	104.4	81.5	104.4	81.5	0.0	0.0
1998	121.5	92.0	120.4	91.0	1.2	1.1	120.2	91.0	119.0	90.1	1.2	0.9
1999	127.5	98.3	126.5	97.8	1.0	0.5	127.5	97.9	126.5	97.4	1.0	0.5
2000	139.4	104.3	138.6	103.7	0.8	0.5	138.9	107.1	138.1	106.6	0.8	0.5
2001	138.0	109.0	137.7	108.8	0.3	0.2	138.2	110.6	137.9	110.5	0.4	0.2
2002	147.2	116.6	146.3	115.7	0.9	0.9	147.0	114.8	146.1	114.0	0.9	0.9
2003	173.5	135.0	170.3	133.0	3.3	2.0	173.1	134.8	169.8	132.9	3.3	1.9
2004	207.6	157.9	206.4	157.0	1.2	0.9	207.6	158.3	206.4	157.3	1.2	0.9
2005	222.4	173.5	221.6	172.7	0.8	0.8	222.2	174.4	221.4	173.7	0.8	0.7

Note: Charter flights as from 1998 include all destinations. The yearly totals have been rounded off from the actual figure and need not necessarily equal the sum of the rounded off sub-totals.

ARRIVALS BY AIR FROM U.K. 1981 - 2005

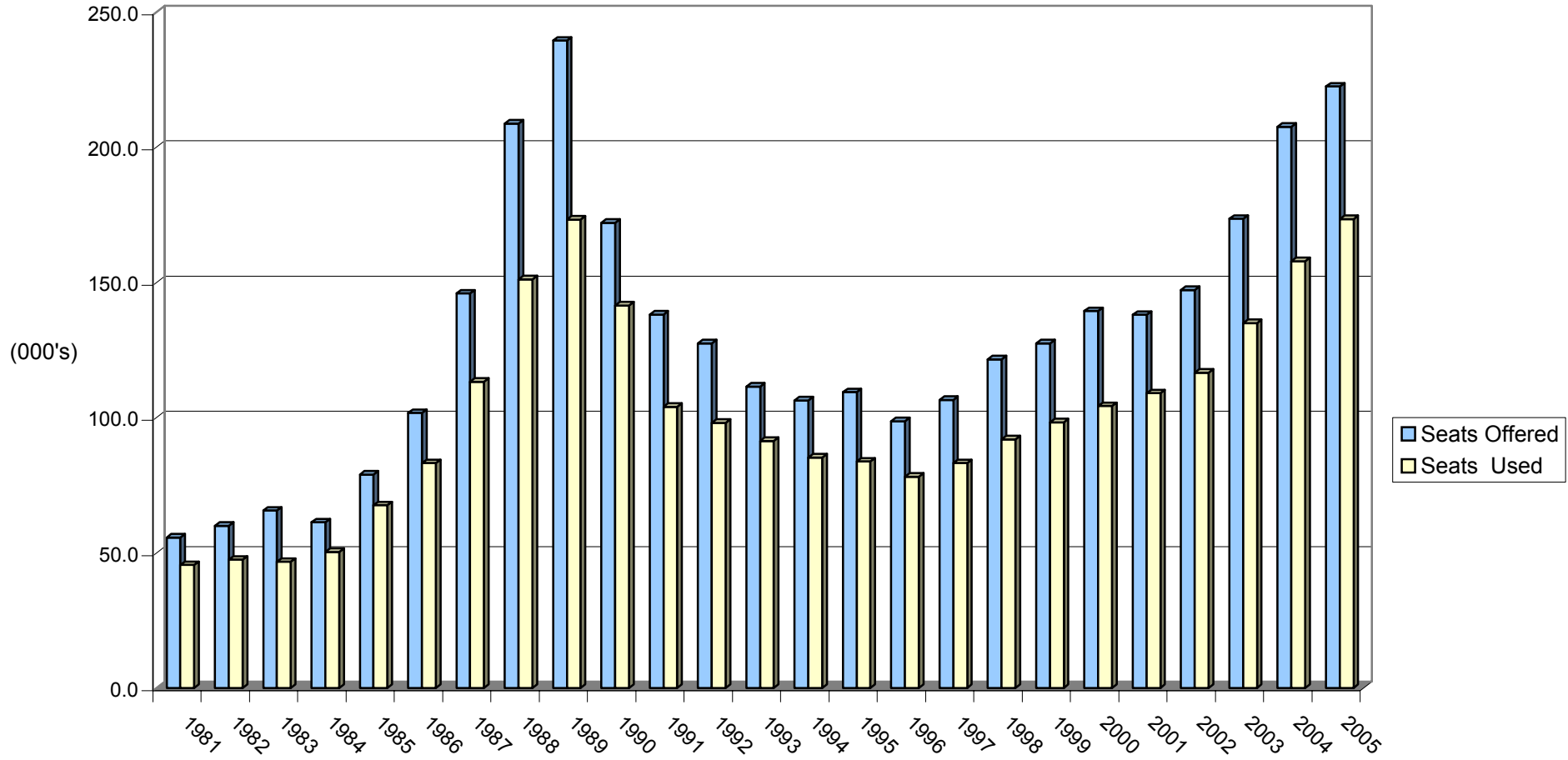


Table 2(a): Arrivals by Air from U.K. (Scheduled Flights), 1981 - 1984

<u>MONTH</u>	<u>(000's)</u>				<u>(000's)</u>				<u>% (i)</u>			
	<u>SEATS USED</u>				<u>SEATS OFFERED</u>				<u>LOAD FACTOR</u>			
	<u>1981</u>	<u>1982</u>	<u>1983</u>	<u>1984</u>	<u>1981</u>	<u>1982</u>	<u>1983</u>	<u>1984</u>	<u>1981</u>	<u>1982</u>	<u>1983</u>	<u>1984</u>
JANUARY	1.5	1.7	1.6	1.5	2.1	2.2	2.9	2.6	70.6	78.2	55.0	59.8
FEBRUARY	1.5	1.8	1.5	1.7	1.9	2.2	2.6	2.1	81.1	77.5	59.0	81.8
MARCH	1.9	2.0	2.1	2.1	2.2	2.1	3.0	2.4	88.2	95.9	70.3	87.2
APRIL	2.2	2.8	2.3	2.5	2.7	3.2	3.9	3.1	79.3	86.7	59.2	79.2
MAY	1.9	2.3	2.2	2.3	2.7	3.2	4.0	3.2	67.7	72.4	55.4	70.1
JUNE	1.9	2.3	2.4	2.2	2.6	3.3	3.9	3.3	72.5	70.9	60.3	68.9
JULY	2.4	2.7	3.0	2.9	2.8	3.5	4.0	3.4	85.5	77.8	74.4	86.1
AUGUST	2.4	2.8	2.8	2.8	2.6	3.3	4.0	3.2	93.3	82.4	70.5	86.7
SEPTEMBER	1.9	2.4	2.7	2.5	2.7	3.4	3.9	3.2	71.9	70.8	68.0	76.4
OCTOBER	2.3	2.3	2.3	2.6	2.7	3.4	3.6	3.2	85.2	69.0	63.0	79.3
NOVEMBER	1.8	1.9	1.6	2.0	2.1	2.9	2.2	2.4	85.0	65.2	71.1	85.0
DECEMBER	1.9	2.0	1.8	2.3	2.1	2.9	2.4	2.5	91.4	70.5	77.1	90.1
TOTAL	23.6	27.0	26.3	27.4	29.2	35.6	40.4	34.6	80.7	75.9	65.0	79.0

Note: (i) All load factors are calculated on the basis of actual figures. The total yearly figure has been rounded off from the actual figure and need not necessarily equal the sum of the rounded off monthly figures.

Table 2(b): Arrivals by Air from U.K. (Scheduled Flights), 1985 - 1988

<u>MONTH</u>	<u>(000's)</u>				<u>(000's)</u>				<u>% (i)</u>			
	<u>1985</u>	<u>1986</u>	<u>1987</u>	<u>1988</u>	<u>1985</u>	<u>1986</u>	<u>1987</u>	<u>1988</u>	<u>1985</u>	<u>1986</u>	<u>1987</u>	<u>1988</u>
JANUARY	2.1	4.1	4.7	7.0	2.6	7.0	7.8	12.7	79.1	58.6	60.3	55.2
FEBRUARY	2.0	4.4	5.0	8.4	2.2	5.9	6.6	11.3	90.9	75.2	76.2	74.9
MARCH	3.0	6.5	7.0	10.6	3.2	7.1	8.6	13.1	97.0	92.2	81.9	81.2
APRIL	3.9	5.6	7.6	10.4	4.6	7.2	8.4	14.2	84.8	77.4	90.0	73.7
MAY	3.9	7.4	9.0	13.1	4.4	8.7	11.4	17.2	89.5	84.8	79.3	76.3
JUNE	4.3	7.1	8.1	11.9	5.0	8.5	12.0	16.2	86.4	83.2	67.7	73.6
JULY	5.4	8.3	10.6	15.5	5.7	9.0	12.4	19.5	95.2	92.2	85.3	79.7
AUGUST	5.8	8.7	10.7	14.6	6.5	9.8	12.4	18.1	89.2	88.2	85.9	80.7
SEPTEMBER	4.7	7.6	8.7	14.0	5.8	8.9	11.6	18.0	79.8	85.0	74.8	77.9
OCTOBER	5.1	7.8	9.8	14.1	5.8	9.1	12.4	18.4	86.7	85.4	79.4	76.7
NOVEMBER	4.6	5.1	7.7	8.9	6.3	7.4	13.0	14.7	73.4	69.4	59.4	60.2
DECEMBER	5.5	6.5	8.7	10.9	7.4	8.2	12.9	16.3	74.1	78.6	67.4	67.3
TOTAL	50.3	79.1	97.6	139.4	59.5	96.9	129.5	189.7	84.5	81.6	75.2	73.5

Note: (i) All load factors are calculated on the basis of actual figures. The total yearly figure has been rounded off from the actual figure and need not necessarily equal the sum of the rounded off monthly figures.

Table 2(c): Arrivals by Air from U.K. (Scheduled Flights), 1989 - 1992

<u>MONTH</u>	<u>(000's)</u>				<u>(000's)</u>				<u>% (i)</u>			
	<u>SEATS USED</u>				<u>SEATS OFFERED</u>				<u>LOAD FACTOR</u>			
	<u>1989</u>	<u>1990</u>	<u>1991</u>	<u>1992</u>	<u>1989</u>	<u>1990</u>	<u>1991</u>	<u>1992</u>	<u>1989</u>	<u>1990</u>	<u>1991</u>	<u>1992</u>
JANUARY	9.7	10.0	7.3	6.2	18.0	15.1	12.2	10.0	53.9	66.3	59.3	61.2
FEBRUARY	10.4	10.6	6.8	6.2	14.4	13.1	10.4	8.7	72.4	81.1	65.9	71.0
MARCH	13.6	12.9	7.4	7.7	17.8	14.8	9.2	9.2	76.3	87.1	81.3	83.0
APRIL	11.9	11.6	6.7	9.1	17.6	14.2	7.9	12.8	67.7	82.2	84.1	71.1
MAY	14.9	12.2	7.5	9.3	19.3	13.8	8.3	12.5	77.2	88.1	90.7	74.1
JUNE	14.7	12.1	7.9	9.6	19.8	13.7	9.5	12.0	74.3	88.3	83.5	79.8
JULY	20.3	13.9	10.8	11.5	24.8	14.6	12.3	12.5	81.8	95.5	88.1	92.2
AUGUST	18.5	12.5	9.7	9.8	24.4	14.3	11.9	12.6	75.8	87.2	81.3	77.4
SEPTEMBER	16.5	12.3	9.0	6.9	22.2	13.9	11.5	8.3	74.3	88.5	78.1	82.9
OCTOBER	16.3	11.5	8.6	9.0	22.5	14.5	11.7	11.9	72.1	79.2	74.0	75.6
NOVEMBER	9.9	8.4	6.7	6.6	15.5	11.6	11.1	8.8	63.7	72.2	60.4	74.7
DECEMBER	10.9	8.8	6.5	6.0	15.3	12.1	10.2	7.5	71.5	72.3	63.4	79.5
TOTAL	167.6	136.8	94.9	97.7	231.6	165.6	126.0	127.0	72.4	82.5	75.3	76.9

Note: (i) All load factors are calculated on the basis of actual figures. The total yearly figure has been rounded off from the actual figure and need not necessarily equal the sum of the rounded off monthly figures.

Table 2(d): Arrivals by Air from U.K. (Scheduled Flights), 1993 - 1996

<u>MONTH</u>	<u>(000's)</u>				<u>(000's)</u>				<u>% (i)</u>			
	<u>SEATS USED</u>				<u>SEATS OFFERED</u>				<u>LOAD FACTOR</u>			
	<u>1993</u>	<u>1994</u>	<u>1995</u>	<u>1996</u>	<u>1993</u>	<u>1994</u>	<u>1995</u>	<u>1996</u>	<u>1993</u>	<u>1994</u>	<u>1995</u>	<u>1996</u>
JANUARY	5.7	5.1	4.1	4.6	7.4	7.1	7.8	7.7	77.9	71.3	53.0	53.9
FEBRUARY	5.5	5.0	5.6	5.5	6.1	5.9	6.6	7.7	90.7	83.5	84.2	68.9
MARCH	7.1	6.9	7.3	7.0	7.5	7.4	7.8	8.4	95.9	93.8	93.8	83.7
APRIL	8.2	6.7	7.7	6.3	10.2	9.4	10.1	8.5	79.9	71.0	76.0	74.3
MAY	8.6	8.3	8.1	7.7	11.1	9.9	10.3	9.0	76.7	83.2	78.1	86.4
JUNE	8.6	8.3	7.6	7.5	11.1	10.6	9.8	8.7	77.7	79.0	77.0	85.6
JULY	10.1	9.6	8.8	7.6	10.9	10.8	10.3	8.4	92.3	89.0	85.8	90.7
AUGUST	8.8	8.4	7.8	6.6	11.0	11.2	10.1	7.5	79.9	75.4	77.7	87.8
SEPTEMBER	8.7	8.3	7.2	7.2	10.7	10.2	9.3	8.4	81.5	80.8	77.7	86.4
OCTOBER	7.9	7.5	7.3	6.6	11.2	9.8	10.0	8.5	70.5	76.3	73.7	78.3
NOVEMBER	6.1	5.3	5.8	5.8	7.3	6.9	8.4	7.8	84.0	76.3	69.5	74.5
DECEMBER	5.8	5.9	6.5	5.7	6.9	7.2	8.9	8.1	84.8	82.4	73.8	70.7
TOTAL	91.2	85.2	83.8	78.1	111.4	106.4	109.4	98.7	81.9	80.0	76.7	79.1

Note: (i) All load factors are calculated on the basis of actual figures. The total yearly figure has been rounded off from the actual figure and need not necessarily equal the sum of the rounded off monthly figures.

Table 2(e): Arrivals by Air from U.K. (Scheduled Flights), 1997 - 2000

<u>MONTH</u>	<u>(000's)</u>				<u>(000's)</u>				<u>% (i)</u>			
	<u>SEATS USED</u>				<u>SEATS OFFERED</u>				<u>LOAD FACTOR</u>			
	<u>1997</u>	<u>1998</u>	<u>1999</u>	<u>2000</u>	<u>1997</u>	<u>1998</u>	<u>1999</u>	<u>2000</u>	<u>1997</u>	<u>1998</u>	<u>1999</u>	<u>2000</u>
JANUARY	4.6	4.8	5.2	4.6	7.9	9.4	8.4	11.1	57.8	51.1	62.5	41.5
FEBRUARY	5.2	6.0	6.3	6.2	6.3	9.0	7.4	9.8	83.0	66.4	84.5	63.6
MARCH	6.1	7.6	8.1	8.7	6.9	9.8	8.8	10.7	87.4	78.1	91.4	81.3
APRIL	5.4	7.8	7.8	9.1	6.6	10.0	9.8	10.4	82.3	77.9	80.4	87.2
MAY	8.6	9.0	10.0	10.1	9.9	11.4	12.5	13.4	86.4	79.0	80.3	75.9
JUNE	7.6	8.0	9.8	9.7	9.4	10.9	11.8	12.4	80.2	73.6	82.7	78.3
JULY	8.6	9.3	10.7	10.8	9.5	10.6	12.4	13.4	90.8	87.3	85.8	80.8
AUGUST	8.3	9.2	9.2	10.1	10.0	11.2	11.6	12.9	83.4	82.2	79.2	78.1
SEPTEMBER	8.1	8.4	8.9	10.5	10.7	10.7	11.8	12.7	75.6	78.0	75.6	82.5
OCTOBER	8.5	8.2	8.3	10.0	10.4	11.2	11.7	13.4	81.1	73.1	70.3	74.6
NOVEMBER	5.9	6.5	6.5	7.0	9.2	8.4	9.7	9.1	63.7	78.0	67.0	76.2
DECEMBER	6.4	6.3	7.1	7.0	9.8	7.9	10.6	9.3	65.8	79.7	66.9	75.0
TOTAL	83.2	91.0	97.8	103.7	106.6	120.4	126.5	138.6	78.0	75.6	77.3	74.9

Note: (i) All load factors are calculated on the basis of actual figures. The total yearly figure has been rounded off from the actual figure and need not necessarily equal the sum of the rounded off monthly figures.

Table 2(f): Arrivals by Air from U.K. (Scheduled Flights), 2001 - 2004

<u>MONTH</u>	<u>(000's)</u>				<u>(000's)</u>				<u>% (i)</u>			
	<u>SEATS USED</u>				<u>SEATS OFFERED</u>				<u>LOAD FACTOR</u>			
	<u>2001</u>	<u>2002</u>	<u>2003</u>	<u>2004</u>	<u>2001</u>	<u>2002</u>	<u>2003</u>	<u>2004</u>	<u>2001</u>	<u>2002</u>	<u>2003</u>	<u>2004</u>
JANUARY	5.4	5.5	6.5	7.5	9.4	9.3	11.4	12.4	57.3	59.6	57.4	60.0
FEBRUARY	6.9	7.6	7.9	9.2	8.3	8.9	9.3	11.9	82.7	85.9	84.8	77.8
MARCH	8.6	10.2	10.3	12.4	9.8	11.7	13.2	15.4	87.9	87.4	78.2	80.7
APRIL	9.0	8.0	11.0	12.9	10.6	10.7	13.2	16.7	84.5	75.2	82.9	77.0
MAY	11.1	10.4	13.0	14.0	13.2	14.1	16.1	20.2	83.6	73.8	80.9	69.3
JUNE	11.0	10.4	12.2	14.3	12.8	13.3	15.6	19.5	85.7	78.3	78.6	73.4
JULY	11.7	13.2	14.6	17.5	13.5	14.6	16.1	20.1	86.6	90.4	90.6	87.2
AUGUST	10.5	12.2	13.2	16.2	13.4	14.3	16.1	20.2	78.3	85.5	81.8	80.4
SEPTEMBER	10.2	11.4	12.0	15.5	12.8	13.6	15.5	19.6	79.5	83.6	77.2	79.0
OCTOBER	9.5	11.0	12.3	14.3	13.4	14.4	15.9	20.3	70.9	76.4	77.5	70.6
NOVEMBER	7.5	8.0	10.2	11.7	10.6	10.7	14.1	15.2	71.1	74.7	71.9	76.8
DECEMBER	7.5	7.6	9.8	11.6	9.7	10.7	13.8	15.0	76.5	71.4	71.3	77.0
TOTAL	108.8	115.7	133.0	157.0	137.7	146.3	170.3	206.4	79.0	79.1	78.1	76.1

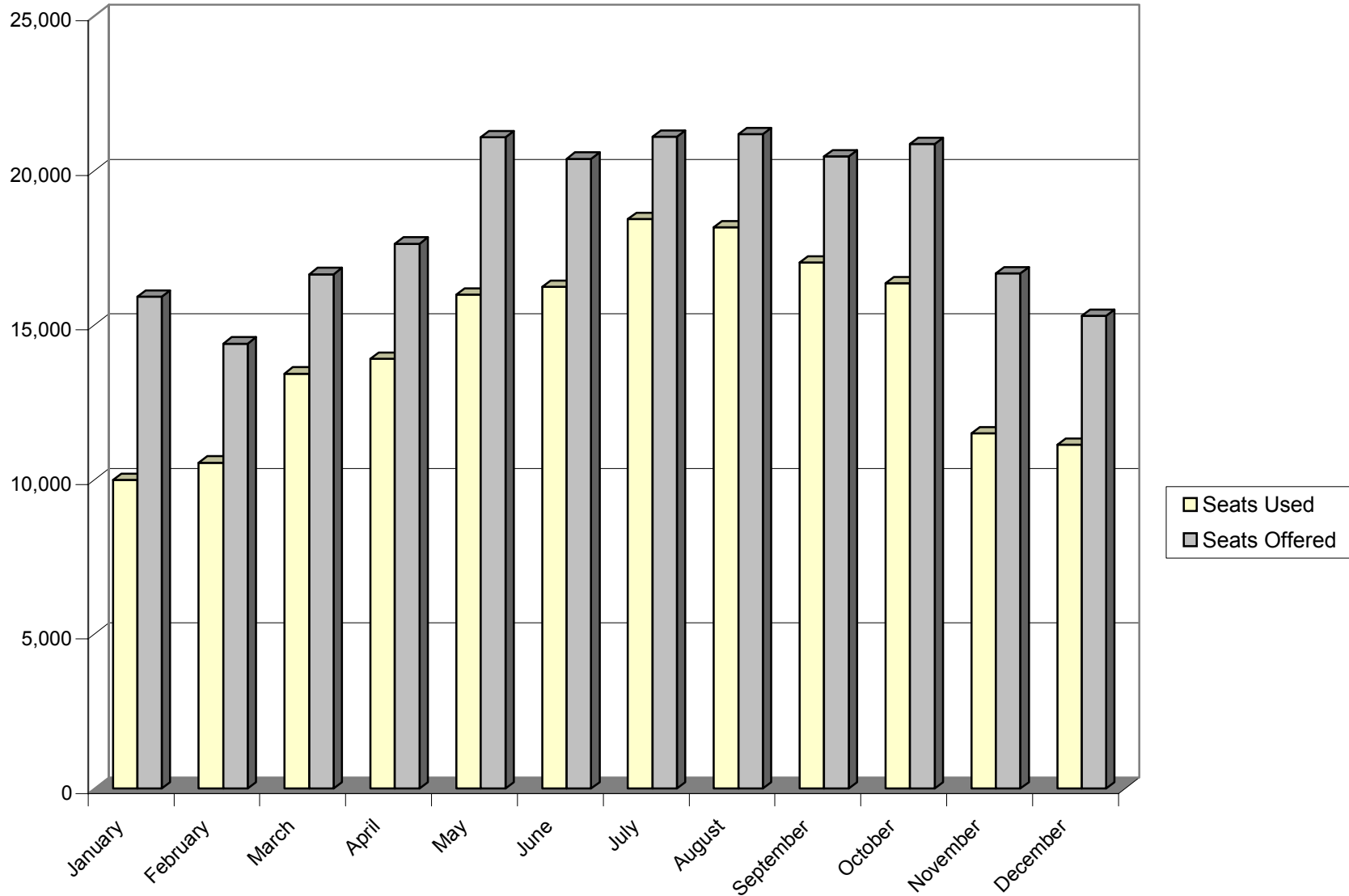
Note: (i) All load factors are calculated on the basis of actual figures. The total yearly figure has been rounded off from the actual figure and need not necessarily equal the sum of the rounded off monthly figures.

Table 2(g): Arrivals by Air from U.K. (Scheduled Flights), 2005

<u>MONTH</u>	<u>(000's)</u>		<u>% (i)</u>
	<u>SEATS USED</u>	<u>SEATS OFFERED</u>	<u>LOAD FACTOR</u>
January	10.0	15.9	62.7
February	10.5	14.4	73.2
March	13.4	16.6	80.7
April	13.9	17.6	78.9
May	16.0	21.1	75.8
June	16.2	20.4	79.7
July	18.4	21.1	87.4
August	18.2	21.2	85.8
September	17.0	20.5	83.3
October	16.4	20.9	78.4
November	11.5	16.7	69.0
December	11.1	15.3	72.7
TOTAL	172.7	221.6	77.9

Note: (i) Load factors are calculated on the basis of actual figures and exclude visitors in transit when applicable. The total yearly figures have been rounded off from the actual figures and need not necessarily equal the sum of the rounded off monthly figures.

AIR ARRIVALS FROM U.K. (SCHEDULED FLIGHTS), 2005



ARRIVALS BY AIR FROM U.K. (SCHEDULED FLIGHTS), 2005

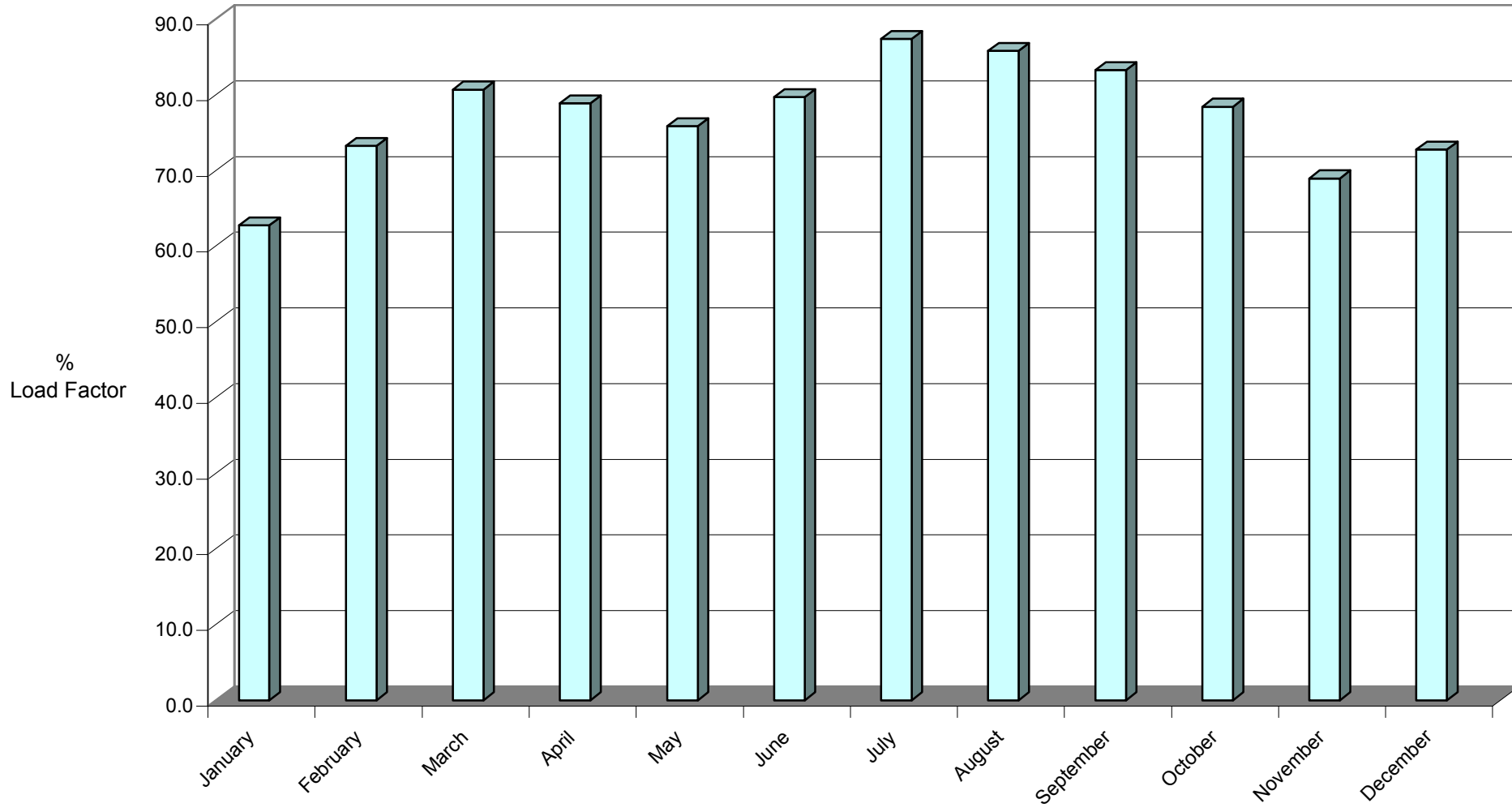


Table 3(a): Departures by Air to U.K. (Scheduled Flights), 1981 - 1983

<u>MONTH</u>	<u>(000's)</u>			<u>(000's)</u>			<u>%</u>					
	<u>SEATS USED</u>			<u>SEATS OFFERED</u>			<u>LOAD FACTOR</u>					
	<u>1981</u>	<u>1982</u>	<u>1983</u>	<u>1981</u>	<u>1982</u>	<u>1983</u>	<u>1981</u>		<u>1982</u>		<u>1983</u>	
							(i)	(ii)	(i)	(ii)	(i)	(ii)
JANUARY	1.6	1.9	1.7	2.1	2.2	2.9	75.9	(73.2)	85.2	(82.5)	61.2	(58.8)
FEBRUARY	1.5	1.6	1.5	1.9	2.3	2.6	79.3	(74.7)	70.9	(67.4)	56.6	(53.7)
MARCH	1.6	1.9	2.0	2.1	2.1	3.0	76.5	(70.9)	91.3	(86.2)	67.2	(61.7)
APRIL	2.2	2.6	2.6	2.7	3.2	3.9	83.0	(80.7)	82.1	(80.3)	65.8	(63.4)
MAY	1.8	2.1	2.0	2.7	3.2	4.0	64.4	(61.6)	67.0	(65.3)	48.6	(47.0)
JUNE	1.8	2.3	2.6	2.6	3.4	3.9	72.0	(69.3)	69.3	(67.4)	65.5	(64.2)
JULY	2.0	2.5	2.4	2.8	3.5	4.0	69.0	(65.9)	70.4	(69.3)	60.8	(59.2)
AUGUST	2.4	3.0	3.3	2.6	3.3	4.0	92.4	(89.9)	90.6	(88.6)	81.4	(79.5)
SEPTEMBER	2.4	2.8	3.1	2.7	3.4	3.9	89.2	(84.8)	83.1	(81.5)	78.3	(75.3)
OCTOBER	2.4	2.5	2.5	2.7	3.4	3.6	87.7	(84.0)	72.2	(68.2)	69.9	(66.6)
NOVEMBER	1.9	1.9	1.6	2.1	2.8	2.2	89.6	(84.3)	67.7	(64.2)	74.2	(71.1)
DECEMBER	1.8	1.6	1.5	2.1	2.8	2.4	86.1	(83.2)	55.2	(53.5)	63.3	(61.4)
TOTAL	23.4	26.7	26.8	29.1	35.6	40.4	80.2	(76.7)	75.1	(72.6)	66.2	(63.7)

Notes: (i) All load factors are calculated on the basis of actual figures. The total yearly figure has been rounded off from the actual figure and need not necessarily equal the sum of the rounded off monthly figures.

(ii) Revenue load factors exclude non-paying passengers and are also calculated on actual figures.

Table 3(b): Departures by Air to U.K. (Scheduled Flights), 1984 - 1986

<u>MONTH</u>	<u>(000's)</u>			<u>(000's)</u>			<u>%</u>					
	<u>SEATS USED</u>			<u>SEATS OFFERED</u>			<u>LOAD FACTOR</u>					
	<u>1984</u>	<u>1985</u>	<u>1986</u>	<u>1984</u>	<u>1985</u>	<u>1986</u>	<u>1984</u>		<u>1985</u>		<u>1986</u>	
							(i)	(ii)	(i)	(ii)	(i)	(ii)
JANUARY	2.1	2.3	5.2	2.6	2.6	6.9	80.5	(77.6)	89.3	(87.0)	75.8	(74.2)
FEBRUARY	1.5	1.9	4.1	2.1	2.2	5.9	72.6	(69.7)	85.9	(82.8)	70.0	(66.1)
MARCH	2.0	2.8	6.0	2.4	3.2	7.1	85.2	(81.3)	89.9	(86.4)	84.1	(82.8)
APRIL	2.5	4.0	6.8	3.1	4.6	7.3	80.3	(77.6)	89.0	(87.3)	92.0	(90.5)
MAY	2.0	3.6	6.3	3.2	4.4	8.6	64.0	(61.7)	81.7	(79.9)	73.9	(72.4)
JUNE	2.4	4.3	7.5	3.2	5.0	8.6	74.3	(72.2)	85.5	(84.4)	87.1	(85.9)
JULY	2.3	4.3	6.9	3.3	5.6	9.0	69.6	(68.0)	76.3	(75.5)	76.6	(75.4)
AUGUST	3.1	6.2	9.2	3.3	6.5	9.8	94.1	(92.2)	94.3	(93.4)	93.4	(92.7)
SEPTEMBER	3.0	5.6	8.6	3.3	5.9	9.0	92.5	(89.5)	94.1	(92.4)	95.7	(94.1)
OCTOBER	2.6	5.2	8.5	3.2	5.9	9.1	80.5	(76.2)	89.2	(86.8)	93.0	(91.1)
NOVEMBER	2.1	5.4	6.2	2.4	6.3	7.4	87.9	(83.0)	85.6	(82.7)	83.8	(81.2)
DECEMBER	2.0	4.4	4.9	2.5	7.5	8.2	78.9	(77.4)	58.9	(58.0)	59.7	(58.5)
TOTAL	27.6	50.0	80.1	34.6	59.7	96.9	80.0	(77.2)	83.9	(82.1)	82.7	(81.1)

Notes: (i) All load factors are calculated on the basis of actual figures. The total yearly figure has been rounded off from the actual figure and need not necessarily equal the sum of the rounded off monthly figures.

(ii) Revenue load factors exclude non-paying passengers and are also calculated on actual figures.

Table 3(c): Departures by Air to U.K. (Scheduled Flights), 1987 - 1989

<u>MONTH</u>	<u>(000's)</u>			<u>(000's)</u>			<u>%</u>					
	<u>SEATS USED</u>			<u>SEATS OFFERED</u>			<u>LOAD FACTOR</u>					
	<u>1987</u>	<u>1988</u>	<u>1989</u>	<u>1987</u>	<u>1988</u>	<u>1989</u>	<u>1987</u>		<u>1988</u>		<u>1989</u>	
							(i)	(ii)	(i)	(ii)	(i)	(ii)
JANUARY	6.4	9.0	12.2	7.9	12.7	18.0	80.6 (79.4)		70.6 (69.7)		67.7 (66.4)	
FEBRUARY	4.7	8.2	10.2	6.6	11.2	14.4	70.8 (68.0)		73.1 (72.0)		70.9 (69.3)	
MARCH	7.0	9.4	11.9	8.6	12.9	17.8	81.8 (78.1)		73.0 (71.5)		67.1 (65.0)	
APRIL	7.5	12.2	13.6	8.3	14.4	17.5	90.2 (89.1)		85.0 (83.6)		77.3 (76.3)	
MAY	8.7	11.6	13.3	11.2	16.8	18.7	77.8 (76.1)		68.9 (67.8)		70.7 (69.4)	
JUNE	8.7	14.1	15.9	11.9	16.6	19.5	72.9 (71.4)		85.1 (83.8)		81.6 (80.5)	
JULY	8.7	13.3	17.1	12.1	17.5	24.5	71.9 (70.6)		76.0 (75.3)		70.0 (69.0)	
AUGUST	11.6	15.9	20.9	12.5	18.1	24.5	92.5 (91.7)		87.9 (87.3)		85.1 (84.4)	
SEPTEMBER	10.6	15.4	18.4	11.7	17.8	22.0	90.3 (89.2)		86.2 (85.2)		83.5 (82.5)	
OCTOBER	10.5	15.5	18.3	12.5	18.2	22.5	84.1 (82.5)		85.5 (84.4)		81.5 (80.1)	
NOVEMBER	9.4	11.0	11.9	12.9	14.9	15.5	72.3 (71.1)		74.3 (72.4)		77.2 (75.3)	
DECEMBER	6.9	8.7	10.2	13.0	16.1	15.0	55.6 (53.6)		53.8 (53.1)		68.2 (67.1)	
TOTAL	100.7	144.3	174.0	129.2	187.2	230.0	77.8 (77.7)		77.1 (76.1)		75.7 (70.5)	

Notes: (i) All load factors are calculated on the basis of actual figures. The total yearly figure has been rounded off from the actual figure and need not necessarily equal the sum of the rounded off monthly figures.

(ii) Revenue load factors exclude non-paying passengers and are also calculated on actual figures.

Table 3(d): Departures by Air to U.K. (Scheduled Flights), 1990 - 1992

<u>MONTH</u>	<u>(000's)</u>			<u>(000's)</u>			<u>%</u>					
	<u>SEATS USED</u>			<u>SEATS OFFERED</u>			<u>LOAD FACTOR</u>					
	<u>1990</u>	<u>1991</u>	<u>1992</u>	<u>1990</u>	<u>1991</u>	<u>1992</u>	<u>1990</u>		<u>1991</u>		<u>1992</u>	
							(i)	(ii)	(i)	(ii)	(i)	(ii)
JANUARY	11.4	7.5	6.7	15.4	12.1	10.2	74.3 (73.0)		62.1 (60.6)		65.9 (64.8)	
FEBRUARY	10.5	6.7	6.2	13.3	10.3	8.6	79.1 (77.2)		65.4 (63.2)		72.5 (70.2)	
MARCH	12.3	6.2	7.0	14.4	8.7	9.2	85.0 (83.2)		71.3 (69.1)		76.0 (73.8)	
APRIL	13.0	7.8	9.5	14.6	8.6	12.8	89.2 (87.9)		90.2 (87.6)		74.3 (73.2)	
MAY	11.7	6.9	8.6	14.2	8.2	12.6	82.2 (80.6)		83.6 (81.0)		68.1 (66.8)	
JUNE	13.2	7.9	9.8	14.1	9.8	12.2	93.3 (92.0)		80.5 (77.9)		80.4 (79.1)	
JULY	12.5	9.2	9.8	14.6	12.4	12.5	86.0 (84.7)		73.8 (71.2)		78.5 (76.7)	
AUGUST	13.7	11.0	11.5	15.2	12.3	12.8	90.5 (89.8)		89.5 (87.0)		89.7 (88.8)	
SEPTEMBER	13.4	9.9	7.6	14.3	12.2	8.2	93.2 (91.7)		81.7 (78.7)		91.9 (90.2)	
OCTOBER	13.8	10.1	10.5	14.7	12.1	11.9	93.5 (92.2)		83.3 (81.5)		87.7 (85.9)	
NOVEMBER	9.6	7.3	7.8	12.0	10.9	9.0	80.5 (77.5)		67.0 (65.4)		86.0 (84.2)	
DECEMBER	8.7	6.1	5.6	12.1	10.2	7.6	71.8 (70.2)		59.7 (58.5)		73.8 (72.5)	
TOTAL	143.8	96.6	100.5	168.9	127.8	127.7	85.1 (83.6)		75.6 (73.3)		78.7 (77.2)	

Notes: (i) All load factors are calculated on the basis of actual figures. The total yearly figure has been rounded off from the actual figure and need not necessarily equal the sum of the rounded off monthly figures.

(ii) Revenue load factors exclude non-paying passengers and are also calculated on actual figures.

Table 3(e): Departures by Air to U.K. (Scheduled Flights), 1993 - 1995

<u>MONTH</u>	<u>(000's)</u>			<u>(000's)</u>			<u>%</u>					
	<u>SEATS USED</u>			<u>SEATS OFFERED</u>			<u>LOAD FACTOR</u>					
	<u>1993</u>	<u>1994</u>	<u>1995</u>	<u>1993</u>	<u>1994</u>	<u>1995</u>	<u>1993</u>		<u>1994</u>		<u>1995</u>	
							(i)	(ii)	(i)	(ii)	(i)	(ii)
JANUARY	6.1	5.8	5.5	7.6	7.1	7.8	80.5 (79.3)		81.9 (80.8)		70.8 (70.3)	
FEBRUARY	5.4	5.0	5.2	6.4	6.2	6.9	83.8 (82.9)		81.7 (80.1)		75.1 (74.4)	
MARCH	6.7	5.5	6.6	7.8	7.5	7.7	86.1 (84.7)		74.1 (72.9)		85.1 (84.6)	
APRIL	8.3	7.6	8.3	10.0	9.3	10.3	82.3 (81.0)		81.9 (81.2)		80.5 (80.3)	
MAY	7.9	7.6	7.3	11.1	10.1	10.4	71.3 (69.8)		76.3 (75.2)		69.8 (69.4)	
JUNE	9.4	8.7	8.2	11.1	10.4	9.9	84.1 (82.9)		84.8 (83.7)		82.5 (82.0)	
JULY	8.7	8.4	7.9	11.3	10.9	10.3	77.5 (76.7)		77.0 (77.5)		76.5 (76.0)	
AUGUST	10.0	9.7	8.5	10.9	10.9	10.3	91.4 (90.5)		89.0 (88.3)		82.8 (82.4)	
SEPTEMBER	9.7	9.3	8.4	10.5	10.2	9.6	92.2 (91.0)		91.8 (91.2)		87.6 (87.0)	
OCTOBER	9.5	8.9	8.3	11.1	10.2	9.9	86.0 (85.0)		88.3 (87.5)		83.0 (82.4)	
NOVEMBER	6.5	5.6	6.3	7.3	6.8	8.5	88.8 (87.3)		83.3 (82.4)		73.8 (73.1)	
DECEMBER	5.1	4.8	4.8	6.9	7.2	7.9	73.2 (72.4)		67.3 (66.9)		61.5 (60.8)	
TOTAL	93.3	86.9	85.3	112.2	107.1	109.5	83.2 (82.0)		81.2 (80.3)		77.8 (77.3)	

Notes: (i) All load factors are calculated on the basis of actual figures. The total yearly figure has been rounded off from the actual figure and need not necessarily equal the sum of the rounded off monthly figures.

(ii) Revenue load factors exclude non-paying passengers and are also calculated on actual figures.

Table 3(f): Departures by Air to U.K. (Scheduled Flights), 1996 - 1998

<u>MONTH</u>	<u>(000's)</u>			<u>(000's)</u>			<u>%</u>					
	<u>SEATS USED</u>			<u>SEATS OFFERED</u>			<u>LOAD FACTOR</u>					
	<u>1996</u>	<u>1997</u>	<u>1998</u>	<u>1996</u>	<u>1997</u>	<u>1998</u>	<u>1996</u>		<u>1997</u>		<u>1998</u>	
							(i)	(ii)	(i)	(ii)	(i)	(ii)
JANUARY	5.3	4.7	6.0	7.7	6.8	9.5	69.4 (69.0)		68.5 (67.4)		63.1 (62.7)	
FEBRUARY	5.6	5.1	5.3	8.2	6.4	8.7	68.1 (67.6)		79.4 (78.3)		60.7 (60.2)	
MARCH	6.3	5.2	6.7	8.1	6.8	9.9	77.1 (76.4)		76.4 (75.5)		67.9 (67.9)	
APRIL	7.0	6.1	8.2	8.7	6.7	10.0	81.0 (80.7)		90.1 (89.7)		81.9 (81.7)	
MAY	7.0	7.7	8.0	8.7	9.6	11.2	79.9 (79.5)		79.8 (79.2)		71.3 (70.9)	
JUNE	8.1	7.9	8.1	9.1	9.5	10.8	89.5 (89.1)		83.2 (83.0)		74.6 (74.2)	
JULY	6.8	7.5	7.7	8.6	9.7	10.3	79.1 (79.0)		77.0 (76.7)		74.5 (74.3)	
AUGUST	6.8	8.7	9.9	7.6	9.5	11.1	89.7 (89.5)		91.7 (91.4)		89.5 (89.4)	
SEPTEMBER	8.0	8.8	9.2	8.5	10.5	10.4	93.5 (93.2)		83.8 (83.5)		88.5 (88.4)	
OCTOBER	7.3	8.6	8.9	8.3	9.6	11.0	88.6 (88.2)		90.0 (89.6)		80.5 (80.3)	
NOVEMBER	5.9	6.5	7.1	7.6	9.2	8.3	77.7 (77.1)		70.3 (70.0)		84.9 (84.4)	
DECEMBER	4.1	4.7	5.0	7.0	10.1	7.6	58.8 (58.4)		46.3 (46.1)		66.2 (65.5)	
TOTAL	78.2	81.5	90.1	98.1	104.4	119.0	79.6 (79.0)		78.1 (77.6)		75.7 (75.4)	

Notes: (i) All load factors are calculated on the basis of actual figures. The total yearly figure has been rounded off from the actual figure and need not necessarily equal the sum of the rounded off monthly figures.

(ii) Revenue load factors exclude non-paying passengers and are also calculated on actual figures.

Table 3(g): Departures by Air to U.K. (Scheduled Flights), 1999 - 2001

<u>MONTH</u>	<u>(000's)</u>			<u>(000's)</u>			<u>%</u>					
	<u>SEATS USED</u>			<u>SEATS OFFERED</u>			<u>LOAD FACTOR</u>					
	<u>1999</u>	<u>2000</u>	<u>2001</u>	<u>1999</u>	<u>2000</u>	<u>2001</u>	<u>1999</u>		<u>2000</u>		<u>2001</u>	
							(i)	(ii)	(i)	(ii)	(i)	(ii)
JANUARY	6.3	6.5	6.6	8.5	11.1	9.4	74.1 (73.9)		58.8 (58.7)		70.2 (70.2)	
FEBRUARY	5.7	6.0	6.6	7.5	9.8	8.4	75.1 (74.3)		61.5 (61.4)		78.9 (78.9)	
MARCH	7.0	8.0	7.9	8.5	10.6	9.8	82.8 (82.7)		75.2 (74.9)		81.0 (81.0)	
APRIL	8.7	9.1	9.4	9.8	10.1	10.6	89.0 (88.5)		89.4 (89.3)		87.9 (87.9)	
MAY	8.9	9.9	10.2	12.5	13.3	13.3	71.0 (71.0)		74.5 (74.5)		76.7 (76.7)	
JUNE	10.0	10.5	11.0	11.6	12.4	12.9	86.3 (86.3)		84.9 (84.8)		85.7 (85.7)	
JULY	9.4	9.8	10.3	12.5	13.4	13.5	75.7 (75.7)		73.0 (72.9)		76.0 (76.0)	
AUGUST	9.6	10.6	11.5	11.4	12.7	13.4	84.7 (84.7)		83.6 (83.5)		85.4 (85.4)	
SEPTEMBER	10.2	11.7	11.1	11.8	12.8	12.8	86.3 (86.3)		91.4 (91.2)		86.6 (86.6)	
OCTOBER	9.0	11.1	11.3	11.8	13.2	13.5	76.4 (76.4)		84.2 (84.1)		83.9 (83.9)	
NOVEMBER	7.4	7.5	8.5	10.0	9.2	10.7	74.4 (74.4)		82.1 (82.0)		79.9 (79.9)	
DECEMBER	5.1	5.7	6.0	10.6	9.3	9.5	48.0 (47.9)		61.3 (60.8)		63.2 (63.2)	
TOTAL	97.4	106.6	110.5	126.5	138.1	137.9	77.0 (76.9)		77.2 (77.1)		80.1 (80.1)	

Notes: (i) All load factors are calculated on the basis of actual figures. The total yearly figure has been rounded off from the actual figure and need not necessarily equal the sum of the rounded off monthly figures.

(ii) Revenue load factors exclude non-paying passengers and are also calculated on actual figures.

Table 3(h): Departures by Air to U.K. (Scheduled Flights), 2002 - 2004

<u>MONTH</u>	<u>(000's)</u>			<u>(000's)</u>			<u>%</u>					
	<u>SEATS USED</u>			<u>SEATS OFFERED</u>			<u>LOAD FACTOR</u>					
	<u>2002</u>	<u>2003</u>	<u>2004</u>	<u>2002</u>	<u>2003</u>	<u>2004</u>	<u>2002</u>		<u>2003</u>		<u>2004</u>	
							(i)	(ii)	(i)	(ii)	(i)	(ii)
JANUARY	6.4	7.5	8.7	9.5	11.4	12.4	67.7	(67.7)	66.2	(66.2)	70.0	(69.9)
FEBRUARY	7.0	7.3	9.1	8.9	9.3	11.9	78.4	(78.4)	77.8	(77.8)	76.2	(76.2)
MARCH	8.4	10.1	11.6	11.1	13.2	15.4	75.7	(75.7)	76.6	(76.6)	75.3	(75.3)
APRIL	9.3	10.5	13.0	10.7	12.9	16.7	86.5	(86.5)	81.1	(81.1)	77.7	(77.7)
MAY	9.4	12.0	12.3	14.1	16.1	20.2	66.5	(66.5)	74.7	(74.6)	61.0	(61.0)
JUNE	10.5	12.8	15.1	13.3	15.4	19.5	79.1	(79.1)	83.3	(83.3)	77.6	(77.6)
JULY	10.8	12.0	14.9	14.8	16.1	20.0	72.9	(72.9)	74.7	(74.6)	74.2	(74.2)
AUGUST	13.1	14.6	17.9	14.5	16.1	20.2	90.5	(90.5)	91.0	(91.0)	88.5	(88.5)
SEPTEMBER	12.6	13.7	17.1	13.6	15.5	19.6	92.7	(92.7)	88.1	(88.1)	87.2	(87.2)
OCTOBER	11.7	12.9	15.4	14.4	15.9	20.3	81.3	(81.3)	81.0	(80.9)	75.8	(75.8)
NOVEMBER	8.6	10.9	12.6	10.7	14.1	15.2	80.6	(80.6)	77.4	(77.4)	83.1	(83.1)
DECEMBER	6.2	8.5	9.8	10.5	13.8	15.0	58.8	(58.8)	61.6	(61.6)	64.9	(64.9)
TOTAL	114.0	132.9	157.3	146.1	169.8	206.4	78.0	(78.0)	78.2	(78.2)	76.2	(76.2)

Notes: (i) All load factors are calculated on the basis of actual figures. The total yearly figure has been rounded off from the actual figure and need not necessarily equal the sum of the rounded off monthly figures.

(ii) Revenue load factors exclude non-paying passengers and are also calculated on actual figures.

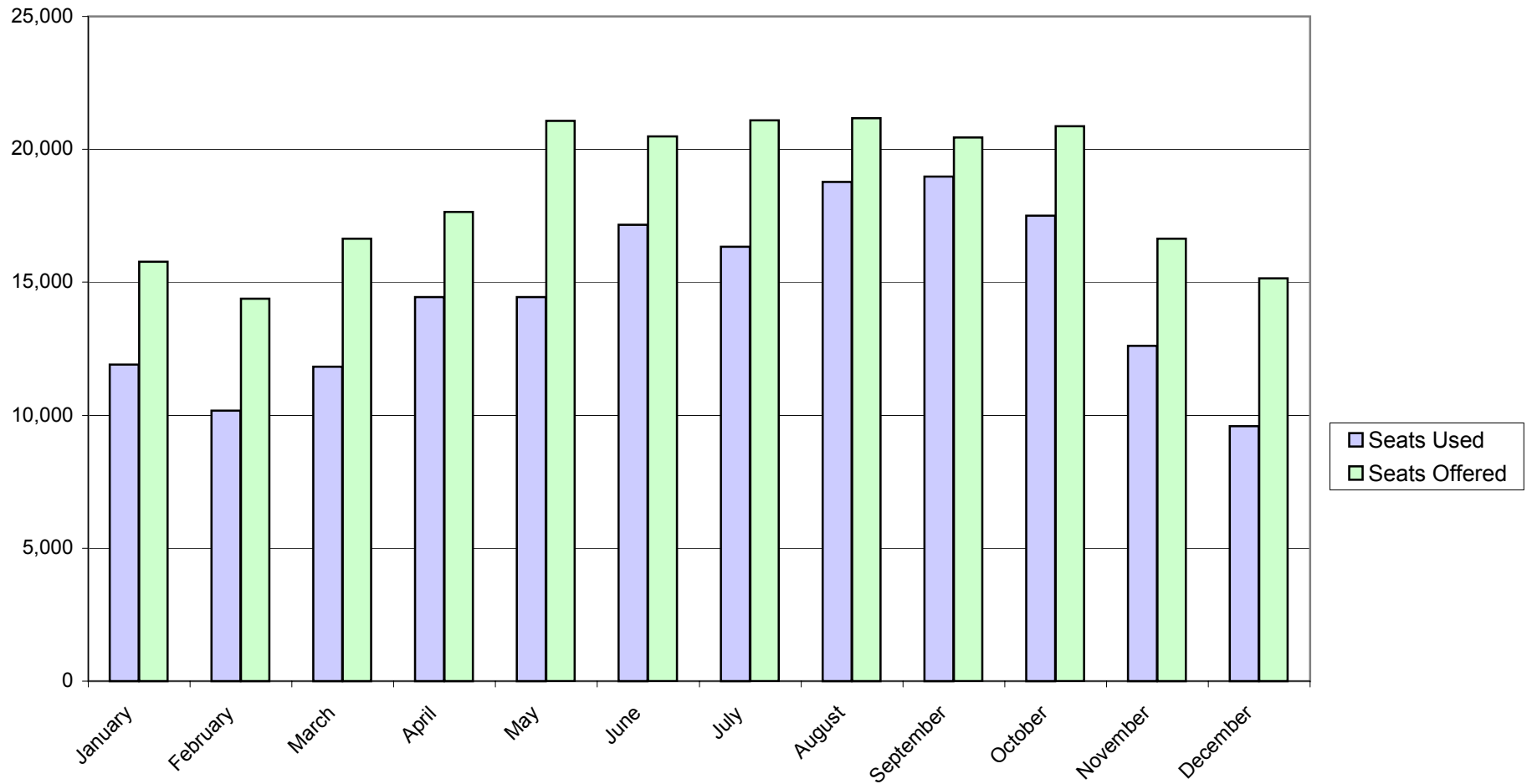
Table 3(i): Departures by Air to U. K. (Scheduled Flights), 2005

<u>MONTH</u>	<u>(000's)</u>		<u>%</u>	
	<u>SEATS USED</u>	<u>SEATS OFFERED</u>	<u>LOAD FACTOR</u> (i)	(ii)
January	11.9	15.8	75.4	75.4
February	10.2	14.4	70.8	70.8
March	11.8	16.6	71.1	71.1
April	14.4	17.6	81.9	81.9
May	14.4	21.1	68.6	68.6
June	17.2	20.5	83.7	83.7
July	16.3	21.1	77.5	77.5
August	18.8	21.2	88.7	88.7
September	19.0	20.4	92.8	92.8
October	17.5	20.9	83.8	83.8
November	12.6	16.6	75.8	75.8
December	9.6	15.1	63.3	63.3
TOTAL	173.7	221.4	78.5	78.5

Notes: (i) Load factors are calculated on the basis of actual figures and exclude visitors in transit when applicable. The total yearly figures have been rounded off from the actual figures and need not necessarily equal the sum of the rounded off monthly figures.

(ii) Revenue load factors exclude non-paying passengers from the Seats Used figures and are also calculated on the basis of actual figures.

DEPARTURES BY AIR TO U.K. (SCHEDULED FLIGHTS), 2005



DEPARTURES BY AIR TO U.K. (SCHEDULED FLIGHTS), 2005

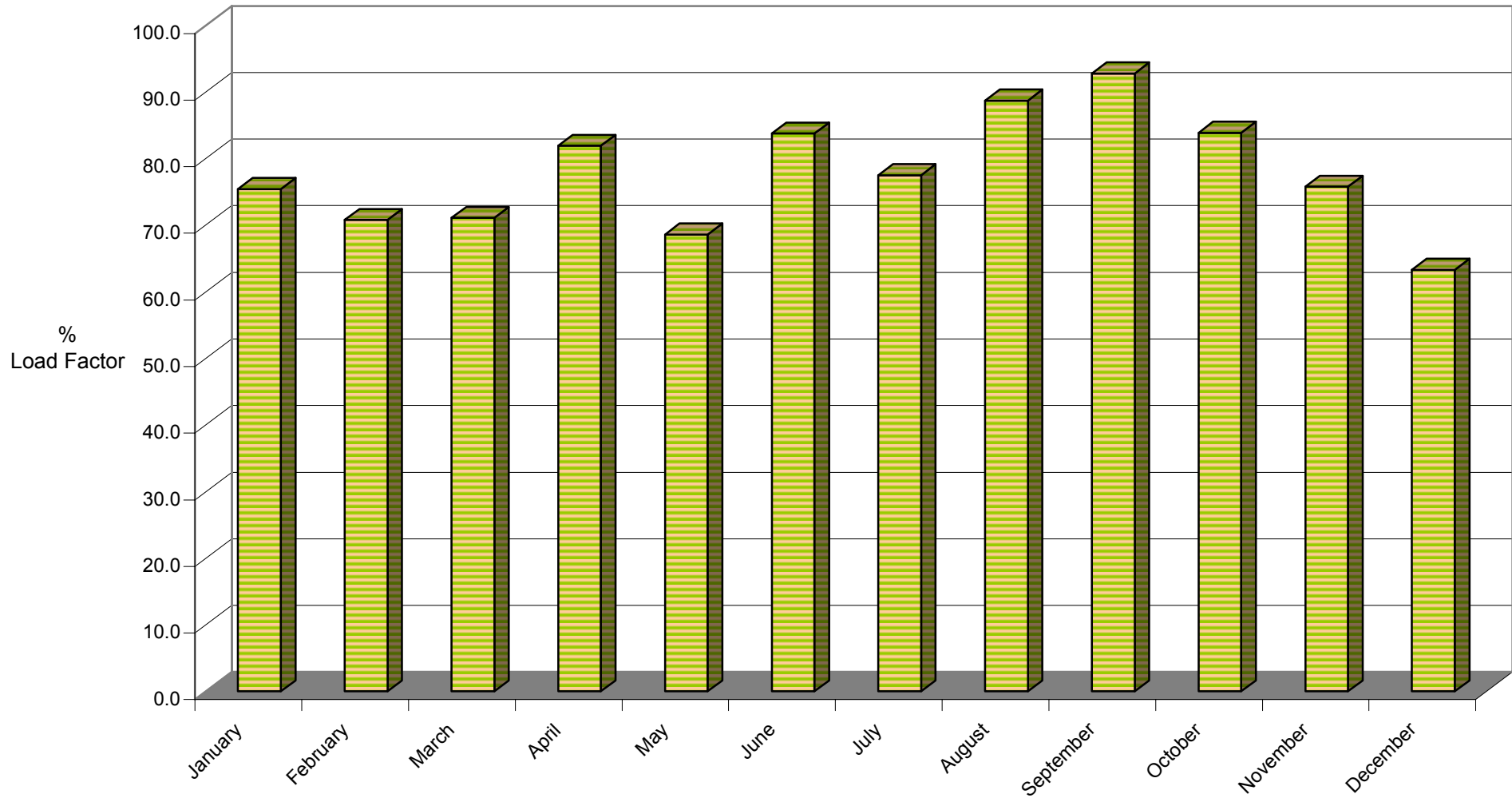


Table 4(a): Arrivals by Air from U.K. (Charter Flights), 1985 - 1988

<u>MONTH</u>	<u>(000's)</u> <u>SEATS USED</u>				<u>(000's)</u> <u>SEATS OFFERED</u>				<u>%</u> <u>LOAD FACTOR</u>			
	<u>1985</u>	<u>1986</u>	<u>1987</u>	<u>1988</u>	<u>1985</u>	<u>1986</u>	<u>1987</u>	<u>1988</u>	<u>1985</u>	<u>1986</u>	<u>1987</u>	<u>1988</u>
JANUARY	0.7	-	2.3	1.6	0.9	-	2.5	1.7	82.5	-	92.2	93.4
FEBRUARY	1.0	0.1	1.5	1.5	1.0	0.1	1.6	1.6	99.9	90.8	97.1	97.5
MARCH	1.5	-	1.2	1.8	1.6	-	1.2	1.8	95.0	-	95.7	96.7
APRIL	1.7	-	1.6	1.2	1.8	-	1.6	1.4	92.9	-	97.6	80.5
MAY	2.0	0.8	0.1	0.6	2.3	1.0	0.2	0.7	88.1	83.8	61.9	90.2
JUNE	1.9	0.7	1.2	0.2	2.2	0.8	1.3	0.3	88.4	84.5	88.8	85.7
JULY	2.6	0.6	1.0	0.5	2.9	0.6	1.0	0.5	90.6	94.9	98.0	96.7
AUGUST	2.0	0.7	1.0	0.6	2.1	0.7	1.0	0.7	93.9	96.8	97.1	95.4
SEPTEMBER	2.4	0.6	1.3	0.5	2.5	0.6	1.3	0.6	93.1	95.4	98.4	74.3
OCTOBER	1.5	0.6	0.8	0.6	2.2	0.9	1.0	0.7	68.1	66.1	75.4	95.2
NOVEMBER	-	-	1.5	1.1	-	-	1.6	1.2	-	-	98.3	96.9
DECEMBER	-	-	1.6	1.5	-	-	1.7	1.7	-	-	96.0	86.5
TOTAL	17.3	4.1	15.1	11.6	19.5	4.8	16.1	12.7	88.9	84.1	94.4	90.7

Notes: (i) Figures exclude MoD charter flights.

(ii) The total yearly figures have been rounded off from the actual figures and need not necessarily equal the sum of the rounded off monthly figures.

Table 4(b): Arrivals by Air from U.K. (Charter Flights), 1989 - 1992

<u>MONTH</u>	<u>(000's)</u> <u>SEATS USED</u>				<u>(000's)</u> <u>SEATS OFFERED</u>				<u>%</u> <u>LOAD FACTOR</u>			
	<u>1989</u>	<u>1990</u>	<u>1991</u>	<u>1992</u>	<u>1989</u>	<u>1990</u>	<u>1991</u>	<u>1992</u>	<u>1989</u>	<u>1990</u>	<u>1991</u>	<u>1992</u>
JANUARY	1.2	0.8	-	0.1	1.7	1.0	0.2	0.1	72.4	79.5	5.8	96.9
FEBRUARY	1.4	1.0	-	-	1.8	1.0	-	-	77.9	91.7	-	-
MARCH	0.4	1.3	0.1	-	0.4	1.3	0.1	-	84.7	96.9	90.2	-
APRIL	0.8	0.8	-	-	1.3	1.3	-	-	61.4	58.1	-	-
MAY	-	-	1.5	-	-	-	1.9	-	-	-	79.3	-
JUNE	-	-	1.8	-	-	-	2.5	-	-	-	74.2	-
JULY	-	0.3	2.1	0.1	-	0.4	2.4	0.1	-	90.8	89.0	93.3
AUGUST	-	0.2	2.7	-	-	0.3	3.1	-	-	65.1	87.6	-
SEPTEMBER	0.2	0.2	1.8	-	0.2	0.5	2.3	-	77.9	42.0	81.2	-
OCTOBER	-	-	1.0	-	0.1	-	1.8	-	-	-	57.0	-
NOVEMBER	0.8	0.2	-	-	1.2	0.5	0.1	-	66.0	52.6	6.1	-
DECEMBER	0.8	-	-	0.1	1.0	-	-	0.1	80.9	-	-	100.0
TOTAL	5.6	4.7	9.1	0.4	7.8	6.2	12.1	0.4	71.7	75.9	75.2	96.9

Notes: (i) Figures exclude MoD charter flights.

(ii) The total yearly figures have been rounded off from the actual figures and need not necessarily equal the sum of the rounded off monthly figures.

Table 4(c): Arrivals by Air from U.K. (Charter Flights), 1998 - 2001

<u>MONTH</u>	<u>(000's)</u>				<u>(000's)</u>				<u>%</u>			
	<u>1998</u>	<u>1999</u>	<u>2000</u>	<u>2001</u>	<u>1998</u>	<u>1999</u>	<u>2000</u>	<u>2001</u>	<u>1998</u>	<u>1999</u>	<u>2000</u>	<u>2001</u>
JANUARY	-	-	0.1	-	-	0.1	0.1	-	-	5.6	82.6	100.0
FEBRUARY	-	-	-	-	-	-	-	-	-	-	-	-
MARCH	-	0.2	-	-	-	0.2	-	-	-	82.5	-	100.0
APRIL	-	0.1	0.2	0.1	-	0.1	0.3	0.3	-	56.9	65.8	42.4
MAY	-	-	-	-	-	-	-	-	-	-	-	-
JUNE	-	-	-	-	-	-	-	-	-	-	-	-
JULY	-	-	-	-	-	-	-	-	-	-	-	-
AUGUST	-	-	-	-	-	-	0.1	-	-	-	94.0	-
SEPTEMBER	-	-	0.1	-	-	0.2	0.1	-	-	15.6	56.9	-
OCTOBER	-	0.1	-	-	0.1	0.2	-	-	58.0	46.1	-	55.1
NOVEMBER	0.7	-	0.1	-	0.7	-	0.2	-	99.3	-	34.4	-
DECEMBER	0.3	0.1	-	-	0.4	0.2	-	-	79.4	73.3	67.5	-
TOTAL	1.1	0.5	0.5	0.2	1.2	1.0	0.8	0.3	90.1	48.9	62.4	50.9

Notes: (i) Figures exclude MoD charter flights. No charter operations were recorded during 1993 - 1997.

(ii) The total yearly figures have been rounded off from the actual figures and need not necessarily equal the sum of the rounded off monthly figures.

Table 4(d): Arrivals by Air from U.K. (Charter Flights), 2002 - 2004

<u>MONTH</u>	<u>(000's)</u>			<u>(000's)</u>			<u>%</u>		
	<u>2002</u>	<u>2003</u>	<u>2004</u>	<u>2002</u>	<u>2003</u>	<u>2004</u>	<u>2002</u>	<u>2003</u>	<u>2004</u>
JANUARY	-	0.2	-	-	0.3	-	100.0	61.6	-
FEBRUARY	-	0.8	-	-	1.4	-	100.0	60.1	-
MARCH	0.1	0.2	-	0.1	0.5	0.1	100.0	41.2	17.0
APRIL	0.2	0.2	-	0.2	0.3	-	100.0	55.2	-
MAY	0.1	0.2	0.2	0.1	0.3	0.2	100.0	71.8	91.3
JUNE	0.1	-	-	0.1	-	-	100.0	-	-
JULY	0.1	-	0.2	0.1	-	0.3	100.0	-	63.5
AUGUST	-	-	-	-	-	-	100.0	-	-
SEPTEMBER	-	0.2	0.1	-	0.3	0.2	100.0	63.2	64.4
OCTOBER	0.1	0.2	0.1	0.1	0.2	0.1	100.0	87.6	100.0
NOVEMBER	-	-	0.2	-	-	0.2	100.0	-	93.6
DECEMBER	0.1	-	-	0.1	-	-	100.0	-	-
TOTAL	0.9	2.0	0.9	0.9	3.3	1.2	100.0	59.9	74.4

Notes: (i) Figures exclude MoD charter flights.

(ii) The total yearly figures have been rounded off from the actual figures and need not necessarily equal the sum of the rounded off monthly figures.

Table 4(e): Arrivals by Air (Charter Flights), 2005

<u>MONTH</u>	<u>(000's)</u> <u>SEATS USED</u>	<u>(000's)</u> <u>SEATS OFFERED</u>	<u>% (i)</u> <u>LOAD FACTOR</u>
January	-	-	-
February	-	-	-
March	-	-	-
April	-	-	-
May	-	-	-
June	0.2	0.2	90.9
July	-	-	-
August	-	-	-
September	0.2	0.2	97.3
October	0.1	0.2	88.1
November	0.2	0.2	97.3
December	-	-	-
TOTAL	0.8	0.8	93.7

Note: (i) Load factors are calculated on the basis of actual figures and exclude visitors in transit when applicable. The total yearly figures have been rounded off from the actual figures and need not necessarily equal the sum of the rounded off monthly figures.

Table 5(a): Departures by Air to U.K. (Charter Flights), 1985 - 1988

<u>MONTH</u>	<u>(000's)</u>				<u>(000's)</u>				<u>%</u>			
	<u>SEATS USED</u>				<u>SEATS OFFERED</u>				<u>LOAD FACTOR</u>			
	<u>1985</u>	<u>1986</u>	<u>1987</u>	<u>1988</u>	<u>1985</u>	<u>1986</u>	<u>1987</u>	<u>1988</u>	<u>1985</u>	<u>1986</u>	<u>1987</u>	<u>1988</u>
JANUARY	0.7	-	2.2	1.6	0.9	-	2.5	1.7	85.0	-	89.0	94.2
FEBRUARY	0.9	0.1	1.5	1.5	1.0	0.1	1.6	1.6	89.7	90.8	95.0	94.4
MARCH	1.5	-	1.0	1.7	1.6	-	1.2	1.8	96.0	-	83.1	93.9
APRIL	1.7	-	0.8	1.4	1.8	-	1.6	1.4	96.0	-	51.7	96.0
MAY	1.7	0.6	-	0.6	2.3	1.0	0.2	0.7	72.6	61.8	32.3	91.2
JUNE	1.9	0.7	1.2	0.2	2.2	0.8	1.3	0.3	89.8	85.6	95.1	90.4
JULY	2.5	0.5	0.9	0.4	2.8	0.6	1.0	0.5	87.9	87.7	86.0	80.6
AUGUST	2.0	0.7	1.0	0.6	2.1	0.7	1.0	0.7	98.0	97.8	93.9	96.0
SEPTEMBER	2.5	0.6	1.3	0.6	2.5	0.6	1.3	0.6	97.5	97.8	98.6	91.8
OCTOBER	2.2	0.6	1.0	0.6	2.2	0.9	1.0	0.7	98.1	74.0	95.5	91.0
NOVEMBER	-	-	1.6	0.9	-	-	1.3	1.2	-	-	81.5	78.6
DECEMBER	-	-	1.6	1.3	-	-	1.7	1.7	-	-	95.5	79.5
TOTAL	17.7	4.0	13.9	11.5	19.3	4.9	16.1	12.7	91.2	81.5	89.8	88.4

Notes: (i) Figures exclude MoD charter flights.

(ii) The total yearly figures have been rounded off from the actual figures and need not necessarily equal the sum of the rounded off monthly figures.

Table 5(b): Departures by Air to U.K. (Charter Flights), 1989 - 1992

<u>MONTH</u>	<u>(000's)</u>				<u>(000's)</u>				<u>%</u>			
	<u>SEATS USED</u>				<u>SEATS OFFERED</u>				<u>LOAD FACTOR</u>			
	<u>1989</u>	<u>1990</u>	<u>1991</u>	<u>1992</u>	<u>1989</u>	<u>1990</u>	<u>1991</u>	<u>1992</u>	<u>1989</u>	<u>1990</u>	<u>1991</u>	<u>1992</u>
JANUARY	1.3	0.8	0.1	0.1	1.7	1.0	0.2	0.1	78.3	77.3	64.6	93.1
FEBRUARY	1.4	0.9	-	-	1.8	1.0	-	-	76.2	83.6	-	-
MARCH	0.3	1.2	0.1	-	0.4	1.3	0.1	-	79.1	93.2	84.8	-
APRIL	1.2	1.0	-	-	1.3	1.3	-	-	92.0	77.9	-	-
MAY	-	-	0.9	-	-	-	1.9	-	-	-	47.6	-
JUNE	-	-	1.8	-	-	-	2.5	-	-	-	74.2	-
JULY	-	0.2	1.8	0.1	-	0.4	2.4	0.1	-	60.8	74.9	93.3
AUGUST	-	0.2	2.9	-	-	0.3	3.0	-	-	62.4	94.2	-
SEPTEMBER	0.2	0.2	2.0	-	0.3	0.5	2.3	-	77.1	45.1	87.6	-
OCTOBER	0.1	-	1.6	-	0.1	-	2.0	-	67.2	-	78.6	-
NOVEMBER	0.6	0.2	0.2	-	1.2	0.5	0.3	-	47.7	53.2	88.1	-
DECEMBER	0.7	-	-	0.3	1.0	-	-	0.2	71.7	-	-	75.4
TOTAL	5.8	4.7	9.7	0.4	7.8	6.2	12.4	0.5	74.5	75.9	78.2	84.3

Notes: (i) Figures exclude MoD charter flights.

(ii) The total yearly figures have been rounded off from the actual figures and need not necessarily equal the sum of the rounded off monthly figures.

Table 5(c): Departures by Air to U.K. (Charter Flights), 1998 - 2001

<u>MONTH</u>	<u>(000's)</u>				<u>(000's)</u>				<u>%</u>			
	<u>1998</u>	<u>1999</u>	<u>2000</u>	<u>2001</u>	<u>1998</u>	<u>1999</u>	<u>2000</u>	<u>2001</u>	<u>1998</u>	<u>1999</u>	<u>2000</u>	<u>2001</u>
JANUARY	-	0.1	0.1	-	-	0.1	0.1	-	-	81.9	82.6	-
FEBRUARY	-	-	-	-	-	-	-	-	-	-	-	-
MARCH	-	0.1	-	-	-	0.2	-	-	-	54.1	-	-
APRIL	-	0.1	0.2	0.1	-	0.1	0.3	0.3	-	100.0	65.8	42.4
MAY	-	-	-	-	-	-	-	-	-	-	-	-
JUNE	-	-	-	-	-	-	-	-	-	-	-	-
JULY	-	-	-	-	-	-	-	-	-	-	-	-
AUGUST	-	-	-	-	-	-	0.1	-	-	-	94.0	-
SEPTEMBER	-	-	0.1	-	-	0.2	0.1	-	-	15.0	56.9	-
OCTOBER	-	0.1	-	-	0.1	0.2	-	-	46.0	54.4	-	-
NOVEMBER	0.6	-	0.1	-	0.7	-	0.2	-	88.1	-	34.4	-
DECEMBER	0.3	-	-	-	0.4	0.2	-	-	57.3	-	67.5	-
TOTAL	0.9	0.5	0.5	0.2	1.2	1.0	0.8	0.4	74.8	48.8	62.4	42.4

Notes: (i) No charter operations were recorded during 1993 - 1997. Figures exclude MoD charter flights.

(ii) The total yearly figures have been rounded off from the actual figures and need not necessarily equal the sum of the rounded off monthly figures.

Table 5(d): Departures by Air to U.K. (Charter Flights), 2002 - 2004

<u>MONTH</u>	<u>(000's)</u>			<u>(000's)</u>			<u>%</u>			
	<u>2002</u>	<u>2003</u>	<u>2004</u>	<u>2002</u>	<u>2003</u>	<u>2004</u>	<u>2002</u>	<u>2003</u>	<u>2004</u>	
				<u>SEATS USED</u>			<u>SEATS OFFERED</u>			<u>LOAD FACTOR</u>
JANUARY	-	0.1	-	-	0.3	-	-	43.8	-	
FEBRUARY	-	0.9	-	-	1.4	-	-	64.5	-	
MARCH	0.1	0.2	-	0.1	0.5	0.1	100.0	42.0	25.0	
APRIL	0.2	0.2	-	0.2	0.3	-	100.0	62.8	-	
MAY	0.1	0.2	0.2	0.1	0.3	0.2	100.0	63.1	90.4	
JUNE	0.1	-	-	0.1	-	-	100.0	-	-	
JULY	0.1	-	0.2	0.1	-	0.3	100.0	-	59.0	
AUGUST	-	-	-	-	-	-	-	-	-	
SEPTEMBER	-	0.1	0.2	-	0.3	0.2	-	41.9	86.8	
OCTOBER	0.1	0.2	0.1	0.1	0.2	0.1	100.0	85.4	100.0	
NOVEMBER	-	-	0.2	-	-	0.2	-	-	94.1	
DECEMBER	0.1	-	-	0.1	-	-	53.8	-	-	
TOTAL	0.9	1.9	0.9	0.9	3.3	1.2	94.6	58.2	78.1	

Notes: (i) Figures exclude MoD charter flights.

(ii) The total yearly figures have been rounded off from the actual figures and need not necessarily equal the sum of the rounded off monthly figures.

Table 5(e): Departures by Air (Charter Flights), 2005

<u>MONTH</u>	<u>(000's)</u> <u>SEATS USED</u>	<u>(000's)</u> <u>SEATS OFFERED</u>	<u>% (i)</u> <u>LOAD FACTOR</u>
January	-	-	-
February	-	-	-
March	-	-	-
April	-	-	-
May	-	-	-
June	0.2	0.2	80.8
July	-	-	-
August	-	-	-
September	0.2	0.2	68.9
October	0.2	0.2	98.8
November	0.2	0.2	89.0
December	-	-	-
TOTAL	0.7	0.8	83.5

Note: (i) Load factors are calculated on the basis of actual figures and exclude visitors in transit when applicable. The total yearly figures have been rounded off from the actual figures and need not necessarily equal the sum of the rounded off monthly figures.

Table 6(a): Arrivals by Air from Morocco (Scheduled Flights), 1993 - 1996

<u>MONTH</u>	<u>(000's)</u>				<u>(000's)</u>				<u>%</u>			
	<u>SEATS USED</u>				<u>SEATS OFFERED</u>				<u>LOAD FACTOR</u>			
	<u>1993</u>	<u>1994</u>	<u>1995</u>	<u>1996</u>	<u>1993</u>	<u>1994</u>	<u>1995</u>	<u>1996</u>	<u>1993</u>	<u>1994</u>	<u>1995</u>	<u>1996</u>
JANUARY	0.6	0.6	0.4	1.6	2.5	2.6	3.2	4.1	23.7	23.1	12.9	40.0
FEBRUARY	0.5	0.5	0.3	0.6	2.2	2.6	2.8	3.1	22.2	19.2	9.9	19.2
MARCH	0.6	0.5	0.4	1.0	2.6	2.7	2.9	3.0	21.4	17.5	14.0	33.3
APRIL	0.4	0.5	0.5	0.6	2.7	2.2	3.2	3.0	15.8	22.8	16.7	21.5
MAY	0.4	0.4	0.5	0.4	2.9	2.5	3.5	2.7	15.6	14.9	13.0	15.6
JUNE	0.3	0.3	0.4	0.5	2.3	2.2	3.5	2.8	14.9	13.0	12.3	19.0
JULY	0.5	0.4	0.4	0.8	2.4	2.0	2.9	2.8	22.1	20.3	13.9	27.1
AUGUST	0.6	0.5	0.6	0.8	1.7	1.5	2.9	2.2	38.1	30.3	22.1	34.8
SEPTEMBER	0.5	0.4	0.4	0.5	1.8	1.6	2.9	2.5	28.7	21.7	13.8	20.1
OCTOBER	0.7	0.4	0.4	0.5	2.2	2.1	3.0	2.8	32.8	18.7	12.4	16.9
NOVEMBER	0.5	0.4	0.7	0.6	2.5	3.2	3.2	2.8	21.0	11.4	20.8	22.3
DECEMBER	0.5	0.3	0.5	0.6	2.5	3.3	3.1	2.3	18.7	10.4	16.5	23.5
TOTAL	6.2	5.0	5.5	8.5	28.2	28.5	37.0	34.1	22.1	17.7	14.9	24.9

Table 6(b): Arrivals by Air from Morocco (Scheduled Flights), 1997 - 2000

<u>MONTH</u>	<u>(000's)</u> <u>SEATS USED</u>				<u>(000's)</u> <u>SEATS OFFERED</u>				<u>%</u> <u>LOAD FACTOR</u>			
	<u>1997</u>	<u>1998</u>	<u>1999</u>	<u>2000</u>	<u>1997</u>	<u>1998</u>	<u>1999</u>	<u>2000</u>	<u>1997</u>	<u>1998</u>	<u>1999</u>	<u>2000</u>
JANUARY	0.5	0.3	-	-	3.3	2.6	0.9	0.5	13.7	12.0	4.5	7.7
FEBRUARY	0.4	0.4	0.1	0.1	2.5	2.4	0.8	0.5	16.4	17.2	6.9	14.9
MARCH	0.5	0.4	0.1	0.1	2.9	2.2	0.5	0.5	17.4	19.4	26.9	16.0
APRIL	0.5	0.3	-	0.1	2.1	1.3	-	0.4	22.8	24.9	-	15.3
MAY	0.5	0.3	-	0.1	2.4	1.2	-	0.5	21.4	22.2	-	14.8
JUNE	0.4	0.2	-	0.1	2.3	1.2	-	0.5	15.7	17.0	-	15.4
JULY	0.4	0.2	-	-	2.6	1.1	-	0.2	13.9	21.6	-	15.1
AUGUST	0.5	0.2	-	-	1.8	0.9	-	-	28.1	25.2	-	-
SEPTEMBER	0.3	0.2	-	-	2.1	0.9	-	-	16.0	22.0	-	-
OCTOBER	0.4	0.3	-	-	2.4	1.5	-	-	18.6	16.8	-	-
NOVEMBER	0.5	0.1	0.1	-	2.6	0.9	0.4	-	21.2	8.2	18.9	-
DECEMBER	0.4	0.2	-	-	2.7	1.0	0.5	-	15.5	22.3	9.5	-
TOTAL	5.3	3.2	0.4	0.4	30.0	17.2	3.1	3.0	18.0	18.4	11.5	14.0

Note: (i) No flights were recorded arriving from Morocco after 2000. Load factors are calculated on the basis of actual figures and exclude visitors in transit.

Table 7(a): Departures by Air to Morocco (Scheduled Flights), 1993 - 1996

<u>MONTH</u>	<u>(000's)</u>				<u>(000's)</u>				<u>% (i)</u>			
	<u>SEATS USED</u>				<u>SEATS OFFERED</u>				<u>LOAD FACTOR</u>			
	<u>1993</u>	<u>1994</u>	<u>1995</u>	<u>1996</u>	<u>1993</u>	<u>1994</u>	<u>1995</u>	<u>1996</u>	<u>1993</u>	<u>1994</u>	<u>1995</u>	<u>1996</u>
JANUARY	0.7	0.7	0.4	0.7	2.6	2.7	3.4	3.2	26.5	25.5	11.3 (10.9)	21.5 (21.3)
FEBRUARY	0.7	0.4	0.3	0.8	2.3	2.5	2.8	2.7	32.0	17.9	9.6 (9.5)	30.0 (30.0)
MARCH	0.6	0.7	0.5	0.9	2.6	2.7	3.2	3.0	22.5	25.7	16.5 (16.3)	30.5 (30.4)
APRIL	0.6	0.5	0.5	0.6	3.0	2.4	3.0	2.8	21.5	19.7	17.0 (17.0)	20.6 (20.6)
MAY	0.6	0.4	0.7	0.6	2.9	2.6	3.8	3.0	22.7	14.7	18.2 (17.7)	21.1 (21.1)
JUNE	0.6	0.3	0.6	0.6	2.4	2.3	3.6	3.0	23.7	12.7	16.8 (16.2)	20.7 (20.4)
JULY	0.8	0.4	0.4	0.8	1.9	1.6	2.7	2.8	39.2	26.6	13.6 (13.5)	28.7 (28.5)
AUGUST	0.9	0.6	0.5	0.7	1.9	1.8	2.7	2.4	46.0	30.8	18.1 (17.9)	28.9 (28.9)
SEPTEMBER	0.7	0.3	0.7	0.6	2.0	1.8	2.8	2.6	37.0	18.9	24.9 (24.1)	24.7 (24.5)
OCTOBER	0.9	0.5	0.6	0.6	2.3	2.2	3.2	3.0	39.3	21.5	18.2 (17.3)	19.4 (19.1)
NOVEMBER	0.6	0.5	0.6	0.9	2.7	3.4	3.3	2.9	21.8	13.5	17.6 (17.2)	31.4 (31.4)
DECEMBER	0.6	0.4	0.6	0.6	2.5	3.3	2.9	3.0	21.8	19.3	19.0 (18.7)	20.7 (20.7)
TOTAL	8.3	5.7	6.2	8.4	29.1	29.3	37.4	34.4	28.4	19.3	16.7 (16.3)	24.7 (24.6)

Note: (i) Figures show both passenger and revenue load factors. The latter is derived by excluding non-paying passengers from the "seats used" column. All load factors are calculated on the basis of actual figures.

Table 7(b): Departures by Air to Morocco (Scheduled Flights), 1997 - 2000

<u>MONTH</u>	<u>(000's)</u>				<u>(000's)</u>				<u>% (i)</u>			
	<u>SEATS USED</u>				<u>SEATS OFFERED</u>				<u>LOAD FACTOR</u>			
	<u>1997</u>	<u>1998</u>	<u>1999</u>	<u>2000</u>	<u>1997</u>	<u>1998</u>	<u>1999</u>	<u>2000</u>	<u>1997</u>	<u>1998</u>	<u>1999</u>	<u>2000</u>
JANUARY	0.4	0.2	0.1	0.1	3.1	3.1	0.8	0.5	13.0 (13.0)	10.2 (9.9)	8.3 (8.0)	13.4 (13.4)
FEBRUARY	0.4	0.5	0.1	0.1	2.4	2.4	0.8	0.5	17.7 (17.1)	22.0 (21.6)	15.3 (15.1)	18.4 (18.4)
MARCH	0.4	0.3	0.1	0.1	2.9	2.9	0.5	0.5	14.6 (13.6)	14.5 (14.0)	11.2 (10.6)	17.4 (17.4)
APRIL	0.4	0.3	-	0.1	2.1	2.1	-	0.4	20.1 (19.4)	27.4 (27.0)	-	17.1 (17.1)
MAY	0.5	0.2	-	0.1	2.7	2.7	-	0.5	16.9 (16.3)	16.0 (15.9)	-	10.5 (10.5)
JUNE	0.3	0.2	-	0.1	2.3	2.3	-	0.5	14.0 (13.3)	11.9 (11.8)	-	14.4 (14.4)
JULY	0.4	0.2	-	-	2.4	2.4	-	0.2	18.5 (17.9)	12.9 (12.7)	-	16.4 (16.4)
AUGUST	0.5	0.2	-	-	2.2	2.2	-	-	24.1 (23.6)	15.3 (15.2)	-	-
SEPTEMBER	0.4	0.2	-	-	2.5	2.5	-	-	16.6 (16.1)	18.2 (18.2)	-	-
OCTOBER	0.4	0.2	-	-	2.1	2.1	-	-	18.0 (17.4)	12.4 (12.3)	-	-
NOVEMBER	0.3	0.1	0.1	-	2.3	2.3	0.4	-	13.6 (13.2)	9.5 (9.3)	13.6 (13.6)	-
DECEMBER	0.4	0.2	-	-	2.5	2.5	0.5	-	14.8 (14.4)	15.8 (15.8)	8.0 (8.0)	-
TOTAL	4.9	4.9	0.3	0.5	29.5	29.5	2.9	3.0	16.6 (16.2)	15.2 (15.0)	11.4 (11.2)	15.1 (15.1)

Notes: (i) Figures show both passenger and revenue load factors. The latter is derived by excluding non-paying passengers from the "seats used" column. All load factors are calculated on the basis of actual figures.

(ii) No flights departing to Morocco were recorded after 2000.

Table 8: Commercial Freight, Set Down/Picked Up, Gibraltar, 1981 - 2005

(000's kgs)

<u>YEAR</u>	<u>SET DOWN</u>	<u>PICKED UP</u>
1981	318	64
1982	481	44
1983	381	38
1984	333	36
1985	419	40
1986	523	59
1987	499	67
1988	599	40
1989	648	45
1990	797	95
1991	596	54
1992	476	64
1993	597	74
1994	518	49
1995	504	52
1996	406	58
1997	330	57
1998	406	69
1999	433	77
2000	419	74
2001	306	71
2002	289	60
2003	325	66
2004	320	61
2005	324	57

Note: (i) Relates to freight from/to all destinations.

COMMERCIAL FREIGHT, 1981 - 2005

