

Government of Gibraltar

Abstract of Statistics 2007

Statistics
Office



GOVERNMENT OF GIBRALTAR

ABSTRACT OF STATISTICS 2007

STATISTICS OFFICE

Government of Gibraltar
Statistics Office

Statistics Online

Copies of this Abstract can be obtained, free of charge from the Statistics Office or from the Publications Office (+350 20070071) and are also available electronically on the Gibraltar Government Website (www.gibraltar.gov.gi).

Historic data can be downloaded from previous copies of the report available on-line.

Comments and requests for general information should be addressed to:

Statistics Office
99 Harbours Walk
The New Harbours
Or

E-mail: statistics@gibraltar.gov.gi
Tel: +350 20075515 / +350 20075490
Fax: +350 20051160

INTRODUCTION

This is the thirty-second Abstract of Statistics to be published. The object of the Abstract is to provide a selection of statistics, in one compact volume, on topics of interest. Most of the information in this Annual Abstract is published separately, by a number of official departments and other authoritative sources and is already in the public domain. Current data for many of the tables appearing in this Abstract are contained in other Reports published by the Statistics Office, such as the Tourist Survey, Hotel Occupancy Survey and Employment Survey. A number of population statistics have been taken from the Census 2001, also published by the Statistics Office.

Definitions and explanatory notes

The tables contain notes and definitions that are important to the proper interpretation and use of the statistics. Sources of information can be found on every page.

<u>TABLE</u>	<u>DESCRIPTION</u>	<u>PAGE</u>
1	Key Indicators, 2004 - 2007	1
	<u>POPULATION</u>	
2	Civilian Population of Gibraltar by Nationality, 1961, 1970, 1977 - 2007	2
3	Population and Persons Present in Gibraltar, 1970, 1981, 1991 and 2001	3
4	Population by Age Group and Sex, 1970, 1981, 1991 and 2001	4
5	Population by Religion and Sex, 1970, 1981, 1991 and 2001	5
6	Population by Religion, Nationality and Sex, 2001	6
7	Civilian Population of Gibraltar by Sex, 1961, 1970, 1977 - 2007	7
8	Registered Live Births in Gibraltar, 1976 - 2007	8
9	Births by Age of Mother, 2007	9
10	Deaths Registered in Gibraltar, 1976 - 2007	10
11	Life Expectancy, 1981, 1991 and 2001	11
12	Marriages in Gibraltar, 1976 - 2007	12
13	Marriages (Residents) in Gibraltar by Month, 1996 - 2007	13
14	Divorces (Residents) in Gibraltar, 1999 - 2007	14
15	Population by Age Group and Marital Status, 2001	15
	<u>HOUSING</u>	
16	Dwelling by Tenure, Gibraltar 1970, 1981, 1991 and 2001	16
17	Government Housing Stock by Age	
18	Distribution of Households by Number of Persons and Number of Rooms per Household, 2001 Census	17
19	Distribution of Households by Number of Persons per Household and Tenure, 2001 Census	18
	<u>EDUCATION</u>	
20	Teaching Staff at Government and Private (primary and secondary) Schools by Qualifications, at 30th September 2007	19
a & b		
Chart	Teaching Staff at Government and Private (primary and secondary) Schools by Qualifications, at 30th September 2007	20
21	Pupils Enrolled at Government Schools, by Age, 30th September 2007	21
a & b		
	<u>HEALTH</u>	
22	Hospital Summary, 2003 - 2007	22
23	Laboratory Confirmed Notifiable Diseases, 2005 - 2007	
24	Cause of Death (%), 2005 - 2007	23
25	Nursing, Dental and Child Welfare Clinic Activity, 2006 - 2007	24
	<u>PUBLIC SAFETY</u>	
26	Road Accidents and Casualties, 1976 - 2007	25
27	Criminal Offences, 2000 - 2007	26
28	Industrial Accidents by Cause of Injury, 1999 - 2007	27
29	Number of Calls Handled by Fire Service, 2000 - 2007	28
30	Hazard Classification of Fires Attended, 2000 - 2007	29
31	Analysis of Special Services Attended, 2004 - 2007	30
32	Supposed Causes of Fire, 2007	31

<u>TABLE</u>	<u>DESCRIPTION</u>	<u>PAGE</u>
	<u>CIVIL ADMINISTRATION</u>	
33	Receptions into Prison and Population in Custody, 1997 - 2007	32
34	Receptions into Prison by Age, 2000 - 2007	33
	<u>EMPLOYMENT</u>	
35	Number of Employee Jobs by Sex, Nationality, Sector and Occupation October 2006/October 2007	34
36	Number of Employee Jobs by Industry, October 2006 and October 2007	35
37	Number of Weekly-Paid Employee Jobs, October 2007	36
38	Number of Monthly-Paid Employee Jobs, October 2007	37
39	Average Annual Earnings and Index, All Employee Jobs, 1980 - 2007	38
40	Total Number of Employee Jobs, October 1980 - October 2007	39
41	Number of Employee Jobs by S.I.C. (92) Sections, October 2007	40
42(a)	Full-Time Monthly-Paid Adult Employee Jobs, 1984 - 2007	41
42(b)	Full-Time Weekly-Paid Adult Employee Jobs, 1984 - 2007	42
43(a)	Full-Time Monthly-Paid Adult Employee Jobs, Official Sector, 1984 - 2007	43
43(b)	Full-Time Weekly-Paid Adult Employee Jobs, Official Sector, 1984 - 2007	44
44(a)	Full-Time Monthly-Paid Adult Employee Jobs, Private Sector, 1984 - 2007	45
44(b)	Full-Time Weekly-Paid Adult Employee Jobs, Private Sector, 1984 - 2007	46
45	Distribution of Average Annual Earnings of All Employee Jobs, October 2007	47
	<u>NATIONAL INCOME</u>	
46	National Income, 2000 - 2006	48
	<u>INDEX OF RETAIL PRICES</u>	
47	Index of Retail Prices: All Items, 1997 - 2008	49
48	Index of Retail Prices (Food and All Items), 1997 - 2008	50
49	Index of Retail Prices (Comparative Weights)	51
50	Internal Purchasing Power of the Pound, 1994 - 2007	52
	<u>TRADE</u>	
51	Summary of Imports and Exports (excluding Petroleum Products), 1975 - 2007	53
52	Imports from E.U. Countries (excluding Petroleum Products), 2001 - 2007	54
53	Imports by Main Countries of Origin (excluding Petroleum Products), 2001 - 2007	55
	<u>TOURISM</u>	
54	Visitor Arrivals in Gibraltar, 1977 - 2007	56
55	All Visitor Arrivals, 2006 - 2007	57
56	Visitor Arrivals by Sea, 2006 - 2007	
57	Visitor Arrivals by Air, 2006 - 2007	58
58	Visitor Arrivals by Land, 2006 - 2007	
59	General Analysis, All Hotels, 1981 - 2007	59
60	Arrivals, Guest Nights Sold, Sleeper Occupancy and Average Length of Stay, 2006 - 2007	60
61	Arrivals, Room Nights Sold and % Room Occupancy, 2006 - 2007	61
62	Tourist Expenditure in Gibraltar, 1996 - 2007	62

<u>TABLE</u>	<u>DESCRIPTION</u>	<u>PAGE</u>
	<u>GOVERNMENT REVENUE AND EXPENDITURE</u>	
63(a)	Consolidated Fund Recurrent Revenue and Expenditure, 1984 - 2009	63
63(b)	Overall Government Revenue and Expenditure, 1999 - 2008	64
64(a)	Consolidated Fund Recurrent Expenditure and Revenue Estimates, 2007 - 2008	65
64(b)	Overall Government Revenue and Expenditure Analysis, 2007 - 2008	66
	<u>FINANCIAL SERVICES</u>	
65	Commercial Banks Liabilities, 1990 - 2007	67
66	Commercial Banks Assets, 1990 - 2007	68
67	Company Management and Trusteeships, as at 31st March, 2003 - 2007	69
68	Licensees, 1997 - 2007	69
	<u>TRANSPORT</u>	
69	New Registrations, Road Vehicles, 1983 - 2007	70
70	Vehicles with Current Renewable Road Tax Licence on 31st December 1984 - 2007	71
71	Deep-Sea Merchant Ships Calling at Gibraltar, 1977 - 2007	72
72	Main Purpose of Call of Deep-Sea Merchant Ships Arriving at Gibraltar, 1977 - 2007	73
73	Comparative Return of Total Shipping Arriving at Gibraltar, 2006 - 2007	74
74	Arrivals/Departures by Air from/to UK, 1983 - 2007	75
Chart	Arrivals by Air from UK, 1983 - 2007	
75	Commercial Freight, Set Down/Picked Up, Gibraltar, 1980 - 2007	76
	<u>TELECOMMUNICATIONS</u>	
76	Number of Exchange Lines, 1975 - 2007	77
77	Number of Telephone Calls, 2001 - 2007	78
78	Number of Internet Connections, 2004 - 2007	79
	<u>PUBLIC UTILITIES</u>	
79	Supply and Billings of Potable Water, 1975 - 2007	80
80	Capacity, Generation and Billings of Electricity, 1975 - 2007	81
	<u>METEOROLOGICAL DATA</u>	
81	Monthly Rainfall (Millimetres), 2002 - 2007	82
82	Daily Mean Temperature °C., 2002 - 2007	83
83	Daily Mean Hours of Sunshine, 2002 - 2007	84

TABLE 1: Key Indicators, 2004 - 2007

	<u>2004</u>	<u>2005</u>	<u>2006</u>	<u>2007</u>
Population	28,759	28,779	28,875	29,257
Employee Jobs	15,994	16,874	18,485	19,696
Employee Jobs as % of Total Population	55.6%	58.6%	64.0%	67.3%
Births per 1,000 Population	14.6	14.5	12.9	13.7
Deaths per 1,000 Population	8.4	8.7	8.0	6.9
Resident Marriages per 1,000 Population	5.5	6.3	5.6	4.5
Persons per Sq. Km.	4,793	4,797	4,813	4,876
Gross Domestic Product per Head (as at 31 March)	£19,552	£20,831	£22,771	n/a
Price Inflation (January to January)	2.9%	2.8%	2.6%	2.6%
Pupils per Teacher (i)	16.3	15.7	16.2	14.3
Licensed Road Vehicles per 100 Persons	78.7	80.9	83.6	80.7
Average Electricity Consumption per Head (KW Hours)	4,496	4,858	5,001	5,021
Average Water Consumption per Head (Cubic Metres)	39.2	38.2	38.6	39.9

Note: (i) Figures exclude staff and pupils of Private Schools.

POPULATION

TABLE 2: Civilian Population of Gibraltar by Nationality, 1961, 1970, 1977 - 2007

<u>YEAR</u>	<u>GIBALTARIAN</u>	<u>UK BRITISH</u>	<u>OTHER</u>	<u>TOTAL</u>
1961	17,985	4,809	1,132	23,926
1970	18,873	5,162	2,783	26,818
1977	19,424	6,215	3,639	29,278
1978	19,459	6,442	3,514	29,415
1979	19,515	6,760	3,485	29,760
1980	19,579	6,676	3,532	29,787
1981	19,825	5,971	2,923	28,719
1982	19,899	5,794	3,651	29,344
1983	20,021	5,808	3,244	29,073
1984	20,009	5,181	3,149	28,339
1985	20,015	5,424	3,404	28,843
1986	20,071	5,502	3,593	29,166
1987	20,162	5,665	3,865	29,692
1988	20,236	5,683	4,158	30,077
1989	20,425	5,782	4,482	30,689
1990	20,531	5,550	4,780	30,861
1991	20,022	5,182	2,870	28,074
1992	20,197	5,027	3,624	28,848
1993	20,275	4,465	3,311	28,051
1994	20,313	4,150	2,644	27,107
1995	20,441	4,023	2,706	27,170
1996	20,608	3,908	2,570	27,086
1997	20,772	4,015	2,405	27,192
1998	20,921	3,825	2,279	27,025
1999	21,010	3,792	2,402	27,204
2000	21,121	3,696	2,216	27,033
2001	22,882	3,372	1,986	28,240
2002	22,974	3,347	2,199	28,520
2003	23,069	3,270	2,266	28,605
2004	23,200	3,326	2,233	28,759
2005	23,361	3,319	2,099	28,779
2006	23,447	3,284	2,144	28,875
2007	23,616	3,223	2,418	29,257

Notes : (i) The civilian population includes Gibraltarian residents, other British residents (including the wives and families of UK-based servicemen, but not the servicemen themselves) and non-British residents. Visitors and transients are not included.

(ii) The 1961, 1970, 1981, 1991 and 2001 figures are those of the Census taken on 3 October 1961, 6 October 1970, 9 November 1981, 14 October 1991 and 12 November 2001 respectively.

TABLE 3: Population and Persons Present in Gibraltar, 1970, 1981, 1991 and 2001

	<u>1970</u>	<u>1981</u>	<u>1991</u>	<u>2001</u>
Gibraltarians	18,873	19,825	20,022	22,882
Other British	3,001	3,706	3,811	2,627
Non-British	2,783	2,923	2,870	1,986
UK-based and families of Servicemen	2,161	2,265	1,371	745
POPULATION	26,818	28,719	28,074	28,240
Visitors	1,003	726	1,010	3,383
Transients	129	146	-	-
Not-Stated	15	25	-	-
Persons present on Census night	27,965	29,616	29,084	31,623

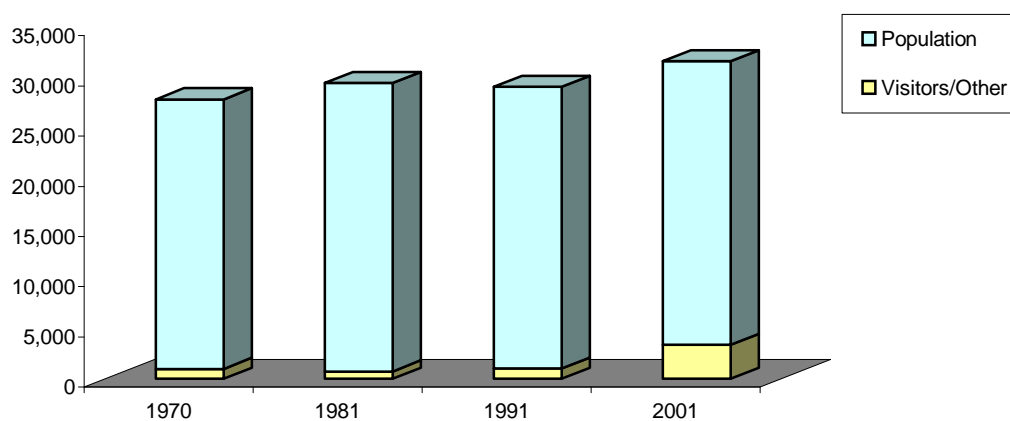
PERSONS PRESENT ON CENSUS NIGHT, 1970, 1981, 1991, 2001

TABLE 4 : Population by Age Group and Sex, 1970, 1981, 1991 and 2001

<u>AGE</u> <u>GROUP</u>	<u>1970</u>			<u>1981</u>		
<u>(YEARS)</u>	<u>MALE</u>	<u>FEMALE</u>	<u>TOTAL</u>	<u>MALE</u>	<u>FEMALE</u>	<u>TOTAL</u>
0 - 4	909	928	1,837	979	885	1,865
5 - 9	1,017	971	1,988	981	956	1,937
10 - 14	939	898	1,837	957	915	1,872
15 - 19	958	786	1,744	960	922	1,884
20 - 24	1,303	830	2,133	998	885	1,884
25 - 29	1,032	698	1,730	1,146	946	2,093
30 - 34	1,168	732	1,900	1,338	887	2,226
35 - 39	974	724	1,698	1,104	751	1,857
40 - 44	898	716	1,614	1,082	742	1,824
45 - 49	791	860	1,651	978	715	1,693
50 - 54	760	826	1,586	850	696	1,546
55 - 59	669	707	1,376	700	755	1,455
60 - 64	557	634	1,191	598	768	1,366
65 - 69	413	496	909	484	597	1,081
70 - 74	269	404	673	339	535	874
75 - 79	130	271	401	199	344	543
80 and over	88	251	339	121	339	460
Not Stated	39	26	65	10	9	19
TOTAL	12,914	11,758	24,672	13,824	12,647	26,479

<u>AGE</u> <u>GROUP</u>	<u>1991</u>			<u>2001</u>		
<u>(YEARS)</u>	<u>MALE</u>	<u>FEMALE</u>	<u>TOTAL</u>	<u>MALE</u>	<u>FEMALE</u>	<u>TOTAL</u>
0 - 4	855	810	1,665	767	691	1,458
5 - 9	887	828	1,715	932	841	1,773
10 - 14	1,000	862	1,862	956	875	1,831
15 - 19	920	931	1,851	917	884	1,801
20 - 24	894	910	1,804	912	852	1,764
25 - 29	1,044	991	2,035	867	903	1,770
30 - 34	1,016	948	1,964	959	957	1,916
35 - 39	1,082	935	2,017	1,008	1,036	2,044
40 - 44	1,191	874	2,065	987	1,008	1,995
45 - 49	998	714	1,712	988	916	1,904
50 - 54	949	740	1,689	1,056	888	1,944
55 - 59	804	665	1,469	844	766	1,610
60 - 64	644	632	1,276	691	688	1,379
65 - 69	482	676	1,158	611	636	1,247
70 - 74	402	602	1,004	477	560	1,037
75 - 79	259	394	653	329	566	895
80 and over	201	563	764	320	759	1,079
Not Stated	-	-	-	23	25	48
TOTAL	13,628	13,075	26,703	13,644	13,851	27,495

Note : The Census figures exclude visitors, UK-based servicemen and their families and UK-based civilians and their families.

TABLE 5: Population by Religion and Sex, 1970, 1981, 1991 and 2001

<u>RELIGION</u>	<u>1970</u>			<u>1981</u>		
	<u>MALE</u>	<u>FEMALE</u>	<u>TOTAL</u>	<u>MALE</u>	<u>FEMALE</u>	<u>TOTAL</u>
Roman Catholic	9,097	10,036	19,133	9,466	10,277	19,747
Church of England	1,055	884	1,939	1,195	1,064	2,259
Other Christian	242	237	479	327	362	689
Moslem	1,858	131	1,989	1,905	216	2,124
Jewish	270	282	552	291	298	589
Hindu	153	85	238	254	138	393
None	n/a	n/a	n/a	n/a	n/a	n/a
Other and Not Stated	239	103	342	386	292	678
TOTAL	12,914	11,758	24,672	13,824	12,647	26,479

<u>RELIGION</u>	<u>1991</u>			<u>2001</u>		
	<u>MALE</u>	<u>FEMALE</u>	<u>TOTAL</u>	<u>MALE</u>	<u>FEMALE</u>	<u>TOTAL</u>
Roman Catholic	9,819	10,722	20,541	10,314	11,156	21,470
Church of England	997	844	1,841	1,031	889	1,920
Other Christian	450	361	811	442	441	883
Moslem	1,461	389	1,850	755	347	1,102
Jewish	308	319	627	276	308	584
Hindu	334	221	555	260	231	491
None	n/a	n/a	n/a	431	355	786
Other and Not Stated	259	219	478	135	124	259
TOTAL	13,628	13,075	26,703	13,644	13,851	27,495

Note: The Census figures exclude visitors, UK-based servicemen and their families and UK-based civilians and their families.

TABLE 6: Population by Religion, Nationality and Sex, 2001

<u>RELIGION</u>	<u>GIBALTARIAN</u>			<u>UK BRITISH</u>		
	<u>MALE</u>	<u>FEMALE</u>	<u>TOTAL</u>	<u>MALE</u>	<u>FEMALE</u>	<u>TOTAL</u>
Roman Catholic	9,720	10,427	20,147	386	450	836
Church of England	531	435	966	486	446	932
Other Christian	273	264	537	109	128	237
Moslem	47	27	74	20	11	31
Jewish	226	238	464	25	38	63
Hindu	85	69	154	68	72	140
Other	81	63	144	46	47	93
None	222	174	396	160	135	295
TOTAL	11,185	11,697	22,882	1,300	1,327	2,627

<u>RELIGION</u>	<u>OTHER</u>			<u>MOROCCAN</u>		
	<u>MALE</u>	<u>FEMALE</u>	<u>TOTAL</u>	<u>MALE</u>	<u>FEMALE</u>	<u>TOTAL</u>
Roman Catholic	204	279	483	4	-	4
Church of England	14	8	22	-	-	-
Other Christian	58	49	107	2	-	2
Moslem	27	20	47	661	289	950
Jewish	23	30	53	2	2	4
Hindu	107	90	197	-	-	-
Other	8	14	22	-	-	-
None	48	46	94	1	-	1
TOTAL	489	536	1,025	670	291	961

Note : The Census figures exclude visitors, UK-based servicemen and their families and UK-based civilians and their families.

TABLE 7: Civilian Population of Gibraltar by Sex, 1961, 1970, 1977 - 2007

<u>YEAR</u>	<u>MALE</u>	<u>FEMALE</u>	<u>TOTAL</u>
1961	10,978	12,948	23,926
1970	13,501	13,332	26,833
1977	15,041	14,237	29,278
1978	15,083	14,332	29,415
1979	15,256	14,504	29,760
1980	15,314	14,473	29,787
1981	14,460	14,259	28,719
1982	15,090	14,254	29,344
1983	14,777	14,296	29,073
1984	14,436	13,903	28,339
1985	14,717	14,126	28,843
1986	15,042	14,124	29,166
1987	15,325	14,367	29,692
1988	15,622	14,455	30,077
1989	15,888	14,801	30,689
1990	16,001	14,860	30,861
1991	14,102	13,972	28,074
1992	14,852	13,996	28,848
1993	14,432	13,619	28,051
1994	13,604	13,503	27,107
1995	13,642	13,528	27,170
1996	13,594	13,492	27,086
1997	13,507	13,685	27,192
1998	13,419	13,606	27,025
1999	13,501	13,703	27,204
2000	13,406	13,627	27,033
2001	13,897	14,343	28,240
2002	14,300	14,220	28,520
2003	14,384	14,221	28,605
2004	14,426	14,333	28,759
2005	14,408	14,371	28,779
2006	14,435	14,440	28,875
2007	14,655	14,602	29,257

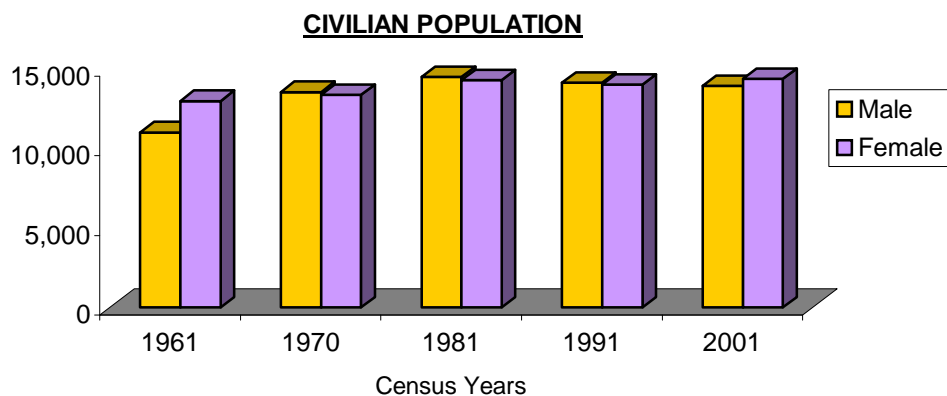
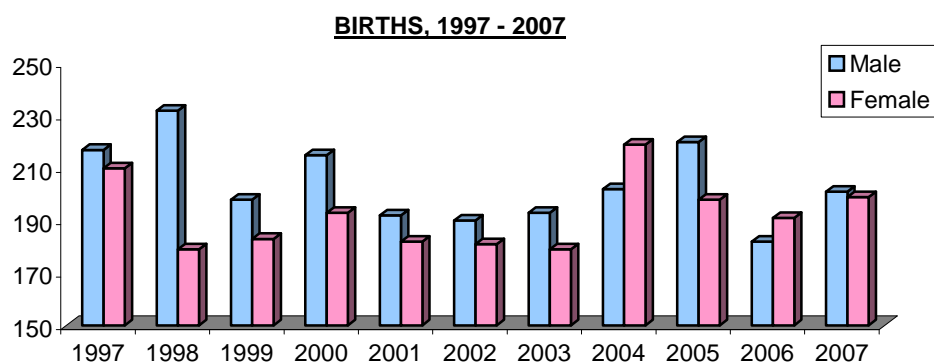


TABLE 8: Registered Live Births in Gibraltar, 1976 - 2007

<u>YEAR</u>	<u>MALE</u>	<u>FEMALE</u>	<u>TOTAL</u>
1976	275	235	510
1977	277	229	506
1978	292	228	520
1979	234	238	472
1980	285	265	550
1981	259	252	511
1982	296	270	566
1983	259	251	510
1984	264	242	506
1985	245	253	498
1986	254	253	507
1987	287	244	531
1988	268	255	523
1989	283	247	530
1990	264	267	531
1991	304	263	567
1992	299	270	569
1993	272	246	518
1994	267	242	509
1995	217	218	435
1996	230	215	445
1997	217	210	427
1998	232	179	411
1999	198	183	381
2000	215	193	408
2001	192	182	374
2002	190	181	371
2003	193	179	372
2004	202	219	421
2005	220	198	418
2006	182	191	373
2007	201	199	400



Note: These figures relate to births registered during the year in question.

TABLE 9: Births by Age of Mother, 2007

<u>AGE (YEARS)</u>	<u>MALES</u>	<u>FEMALES</u>	<u>TOTAL</u>
19 and under	18	10	28
20-34	136	147	283
over 35	45	42	87
TOTAL	199	199	398

BIRTHS BY AGE OF MOTHER, 2007

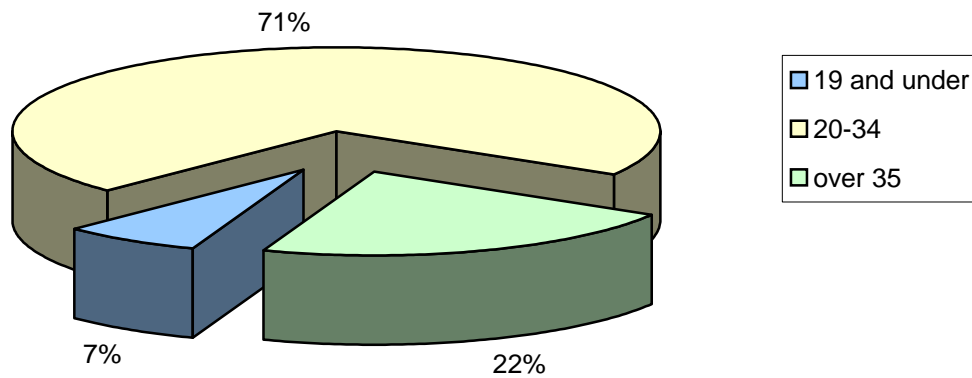


TABLE 10: Deaths Registered in Gibraltar, 1976 - 2007

<u>YEAR</u>	<u>MALE</u>	<u>FEMALE</u>	<u>TOTAL</u>
1976	143	110	253
1977	134	114	248
1978	124	129	253
1979	125	132	257
1980	141	141	282
1981	113	118	231
1982	117	106	223
1983	128	124	252
1984	136	129	265
1985	126	150	276
1986	154	136	290
1987	109	108	217
1988	135	158	293
1989	122	97	219
1990	144	135	279
1991	140	115	255
1992	100	105	205
1993	129	146	275
1994	125	136	261
1995	103	102	205
1996	109	112	221
1997	119	144	263
1998	130	137	267
1999	131	146	277
2000	136	126	262
2001	131	118	249
2002	117	125	242
2003	120	114	234
2004	127	115	242
2005	112	137	249
2006	107	123	230
2007	94	108	202

DEATHS, 1995 - 2007

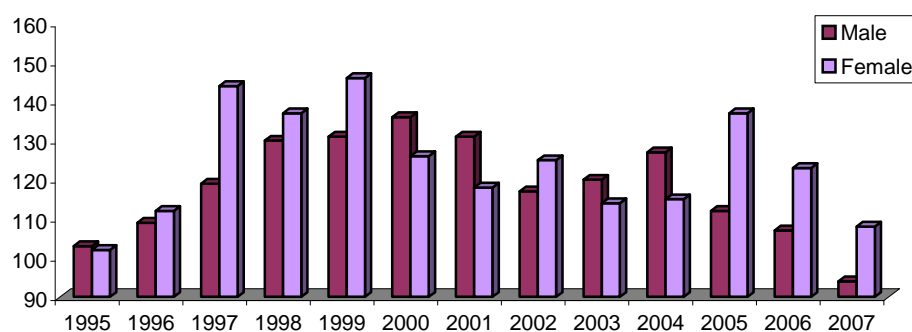


TABLE 11: Life Expectancy, 1981, 1991 and 2001

<u>AGE (YEARS)</u>	<u>1981</u>		<u>1991</u>		<u>2001</u>	
	<u>MALE</u>	<u>FEMALE</u>	<u>MALE</u>	<u>FEMALE</u>	<u>MALE</u>	<u>FEMALE</u>
0	71.4	75.5	73.4	80.4	78.5	83.3
1	70.8	75.0	72.8	79.9	77.5	83.5
5	66.8	71.0	68.8	75.9	73.5	79.5
10	62.0	66.0	63.8	70.9	68.5	75.0
15	57.0	61.0	58.9	65.9	63.5	70.0
20	52.1	56.0	53.9	60.9	58.5	65.0
25	47.1	51.1	49.0	56.0	53.5	60.0
35	37.4	41.4	39.3	46.3	43.5	50.3
45	27.5	31.5	30.0	36.6	33.9	40.3
55	18.0	22.3	21.1	27.2	25.8	30.3
65	11.1	13.5	13.4	18.4	17.9	20.6
75	7.5	8.3	8.0	12.4	11.3	13.7

LIFE EXPECTANCY, 2001

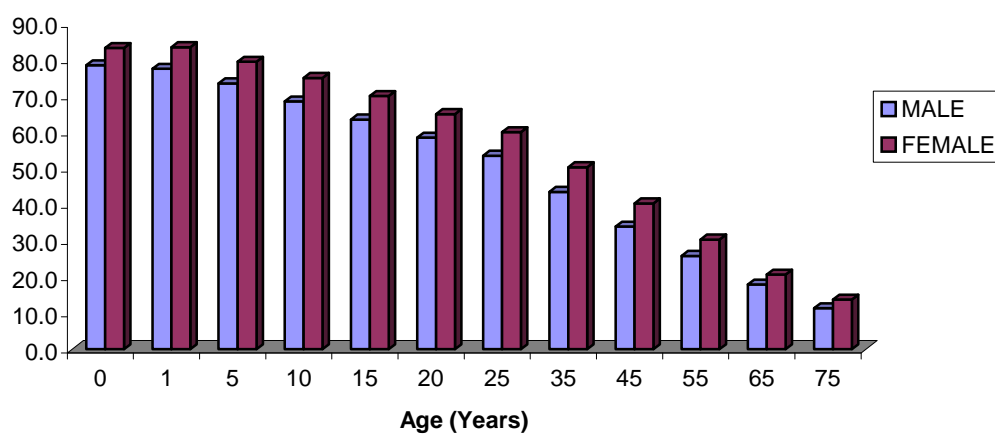


TABLE 12: Marriages in Gibraltar, 1976 - 2007

<u>YEAR</u>	<u>RESIDENT (i)</u>	<u>NON-RESIDENT (ii)</u>	<u>TOTAL</u>
1976	208	287	495
1977	153	308	461
1978	220	276	496
1979	174	285	459
1980	203	226	429
1981	194	235	429
1982	178	228	406
1983	181	251	432
1984	175	223	398
1985	173	411	584
1986	177	456	633
1987	192	532	724
1988	249	490	739
1989	212	542	754
1990	236	545	781
1991	229	552	781
1992	246	532	778
1993	232	526	758
1994	142	555	697
1995	159	608	767
1996	155	567	722
1997	136	539	675
1998	141	498	639
1999	161	527	688
2000	149	572	721
2001	164	575	739
2002	166	643	809
2003	179	650	829
2004	159	727	886
2005	182	640	822
2006	161	673	834
2007	132	797	929

Notes: (i) Refers to marriages where one or both partners are resident in Gibraltar.

(ii) Refers to marriages where neither partner is resident in Gibraltar.

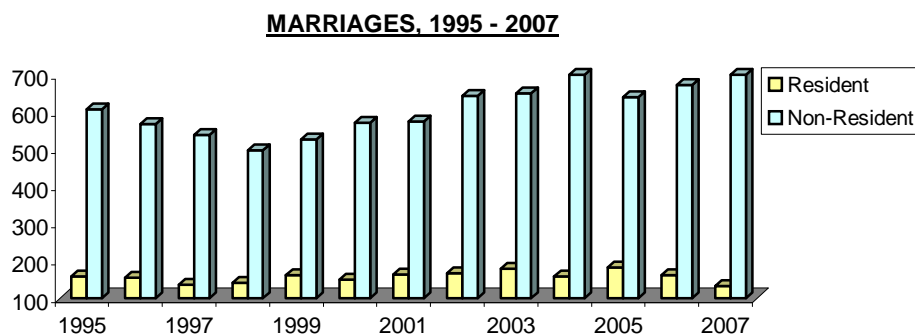


TABLE 13: Marriages (Residents) in Gibraltar by Month, 1996 - 2007

<u>MONTH</u>	<u>1996</u>	<u>1997</u>	<u>1998</u>	<u>1999</u>	<u>2000</u>	<u>2001</u>	<u>2002</u>	<u>2003</u>	<u>2004</u>	<u>2005</u>	<u>2006</u>	<u>2007</u>
January	11	4	10	6	4	6	5	6	6	4	6	1
February	11	10	9	10	9	9	8	9	8	10	7	9
March	12	6	6	9	7	6	9	16	11	13	8	8
April	12	4	9	7	12	7	11	15	10	18	9	6
May	11	9	7	7	15	10	11	10	12	16	24	7
June	16	20	15	24	22	15	17	18	31	23	16	13
July	24	20	19	28	12	29	22	19	13	20	24	26
August	17	12	21	17	20	21	18	24	16	23	19	20
September	23	20	19	22	15	21	24	22	20	34	22	15
October	8	11	11	12	15	18	17	19	12	10	9	15
November	4	10	9	12	12	12	13	11	9	9	6	5
December	6	10	6	7	6	10	11	10	11	2	11	7
TOTAL	155	136	141	161	149	164	166	179	159	182	161	132

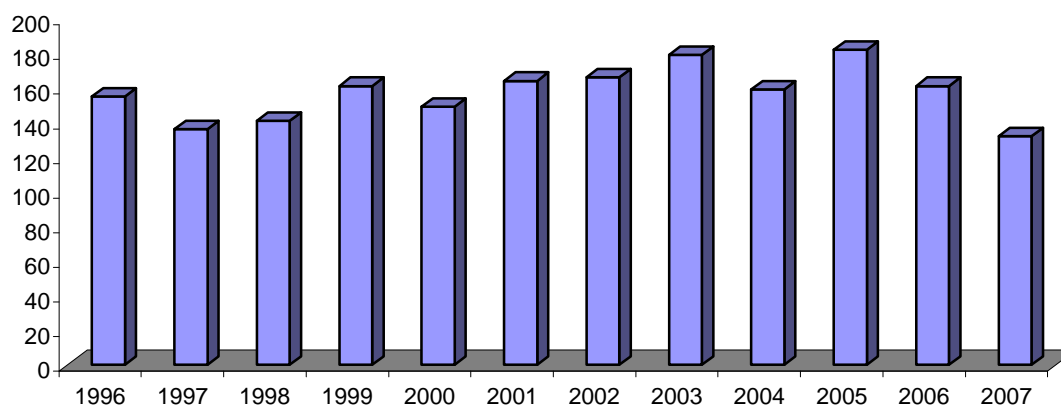
MARRIAGES IN GIBRALTAR, 1996 - 2007

TABLE 14: Divorces (Residents) in Gibraltar, 1999 - 2007

<u>YEAR</u>	<u>DIVORCES</u>
1999	89
2000	96
2001	129
2002	150
2003	159
2004	119
2005	97
2006	121
2007	96

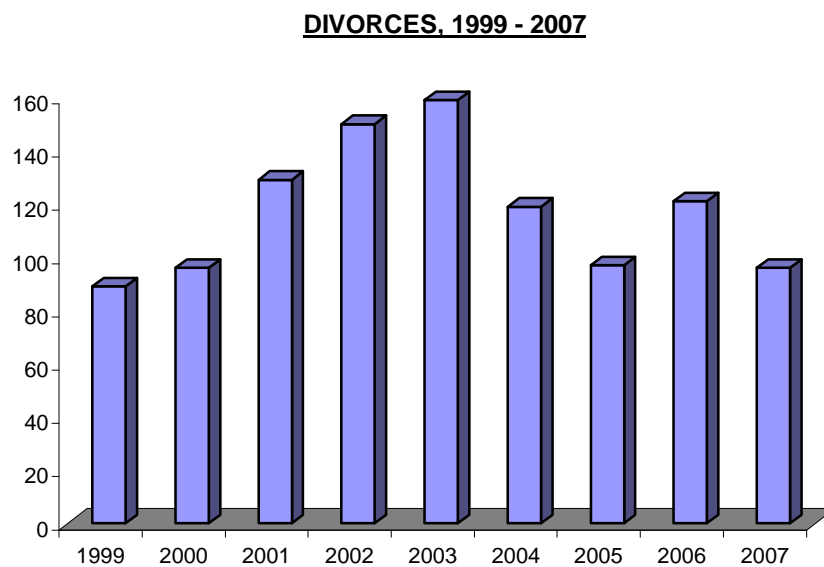


TABLE 15: Population by Age Group and Marital Status, 2001

AGE GROUP	<u>SINGLE</u>		<u>MARRIED</u>		<u>RE-MARRIED</u>		<u>TOTAL</u>		<u>GRAND TOTAL</u>
<u>(YEARS)</u>	<u>MALE</u>	<u>FEMALE</u>	<u>MALE</u>	<u>FEMALE</u>	<u>MALE</u>	<u>FEMALE</u>	<u>MALE</u>	<u>FEMALE</u>	
Under 15	2,655	2,407	-	-	-	-	2,655	2,407	5,062
15 - 19	915	874	2	10	-	-	917	884	1,801
20 - 24	842	674	66	160	-	-	908	834	1,742
25 - 29	541	392	285	442	-	1	826	835	1,661
30 - 34	286	158	581	667	5	8	872	833	1,705
35 - 39	173	120	725	734	15	19	913	873	1,786
40 - 44	122	82	734	755	20	12	876	849	1,725
45 - 49	97	55	771	704	14	11	882	770	1,652
50 - 54	91	53	869	680	14	13	974	746	1,720
55 - 59	42	39	711	584	15	5	768	628	1,396
60 - 64	34	35	594	500	8	7	636	542	1,178
65 - 69	37	39	519	399	6	1	562	439	1,001
70 - 74	25	39	386	295	5	1	416	335	751
75 - 79	24	34	249	204	1	1	274	239	513
80 +	22	76	173	123	-	-	195	199	394
Not Stated	14	10	8	10	-	1	22	21	43
TOTAL	5,920	5,087	6,673	6,267	103	80	12,696	11,434	24,130

AGE GROUP	<u>WIDOWED</u>		<u>DIVORCED</u>		<u>SEPARATED</u>		<u>TOTAL</u>		<u>GRAND TOTAL</u>
<u>(YEARS)</u>	<u>MALE</u>	<u>FEMALE</u>	<u>MALE</u>	<u>FEMALE</u>	<u>MALE</u>	<u>FEMALE</u>	<u>MALE</u>	<u>FEMALE</u>	
Under 15	-	-	-	-	-	-	-	-	0
15 - 19	-	-	-	-	-	-	-	-	0
20 - 24	-	-	-	3	4	15	4	18	22
25 - 29	-	1	14	28	27	39	41	68	109
30 - 34	-	5	40	58	47	61	87	124	211
35 - 39	2	16	47	88	46	59	95	163	258
40 - 44	3	17	63	90	45	52	111	159	270
45 - 49	5	28	64	79	37	39	106	146	252
50 - 54	10	42	48	69	24	31	82	142	224
55 - 59	10	64	49	57	17	17	76	138	214
60 - 64	18	95	26	41	11	10	55	146	201
65 - 69	31	155	9	33	9	9	49	197	246
70 - 74	52	203	4	12	5	10	61	225	286
75 - 79	47	312	4	13	4	2	55	327	382
80 +	122	551	1	9	2	-	125	560	685
Not Stated	-	1	-	2	1	1	1	4	5
TOTAL	300	1,490	369	582	279	345	948	2,417	3,365

Note: The figures are taken from the 2001 Census and exclude visitors, UK-based servicemen and their families and UK-based civilians and their families.

HOUSING

TABLE 16: Dwelling by Tenure, Gibraltar 1970, 1981, 1991 and 2001

	<u>1970</u>		<u>1981</u>		<u>1991</u>		<u>2001</u>	
<u>TENURE</u>	<u>No.</u>	<u>%</u>	<u>No.</u>	<u>%</u>	<u>No.</u>	<u>%</u>	<u>No.</u>	<u>%</u>
Govt. Rented	3,741	60.7	4,503	65.0	4,694	61.7	4,276*	44.0
Private Rented	2,170	35.2	2,063	29.8	1,758	23.1	1,338	13.8
Owner Occupied	253	4.1	361	5.2	1,152	15.2	2,366	24.4
Co-Ownership	-	-	-	-	-	-	1,655	17.0
Other	n/a	-	n/a	-	n/a	-	82	0.8
TOTAL	6,164	100.0	6,927	100.0	7,604	100.0	9,717	100.0

Notes : (i) Figures relate to the Census and exclude vacant houses/flats. "Other" includes boats, etc.

*(ii) * The reduction from 4,694 to 4,276 reflects an increase in vacant flats, flats under repair or due for demolition as recorded on Census day and the sale of Government property.*

TABLE 17: Government Housing Stock by Age

<u>DATE BUILT</u>	<u>No.</u>	<u>%</u>
1940 & earlier	797	15.7
1948 - 1952	713	14.1
1953 - 1957	179	3.5
1958 - 1962	692	13.7
1963 - 1967	398	7.9
1968 - 1972	433	8.6
1973 - 1977	880	17.4
1978 - 1982	397	7.8
1983 - 1987	192	3.8
1988 - 1992	0	0.0
1993 - 1997	86	1.7
1998 - 2007 ⁽ⁱⁱ⁾	296	5.8
TOTAL	5,063	100.0

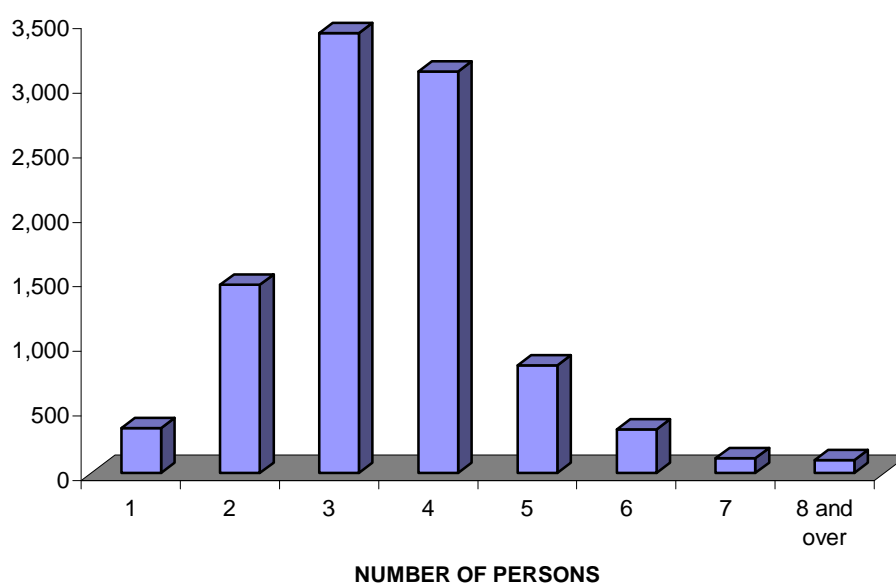
Notes : (i) A review was undertaken of all Government housing stock. A number of adjustments have been made in respect of the period 1940 to 1972 which take account of demolished flats, modernised dwellings, houses put out to tender and dwellings sold to sitting tenants.

(ii) Includes MoD housing transferred to the Gibraltar Government i.e. Edinburgh House built during 1953 - 1957.

**TABLE 18: Distribution of Households by Number of Persons
and Number of Rooms per Household, 2001 Census**

<u>NUMBER OF PERSONS</u>	<u>NUMBER OF ROOMS</u>								<u>TOTAL</u>
	<u>1</u>	<u>2</u>	<u>3</u>	<u>4</u>	<u>5</u>	<u>6</u>	<u>7</u>	<u>8 and over</u>	
1	262	710	681	258	63	25	6	8	2,013
2	71	540	1,234	663	157	64	24	15	2,768
3	7	112	750	684	164	53	17	11	1,798
4	4	64	561	1,009	232	102	33	30	2,035
5	2	25	144	357	130	62	16	17	753
6	-	5	29	105	61	16	9	10	235
7	-	-	7	20	17	7	4	4	59
8 and over	-	-	2	14	8	6	3	6	39
TOTAL	346	1,456	3,408	3,110	832	335	112	101	9,700

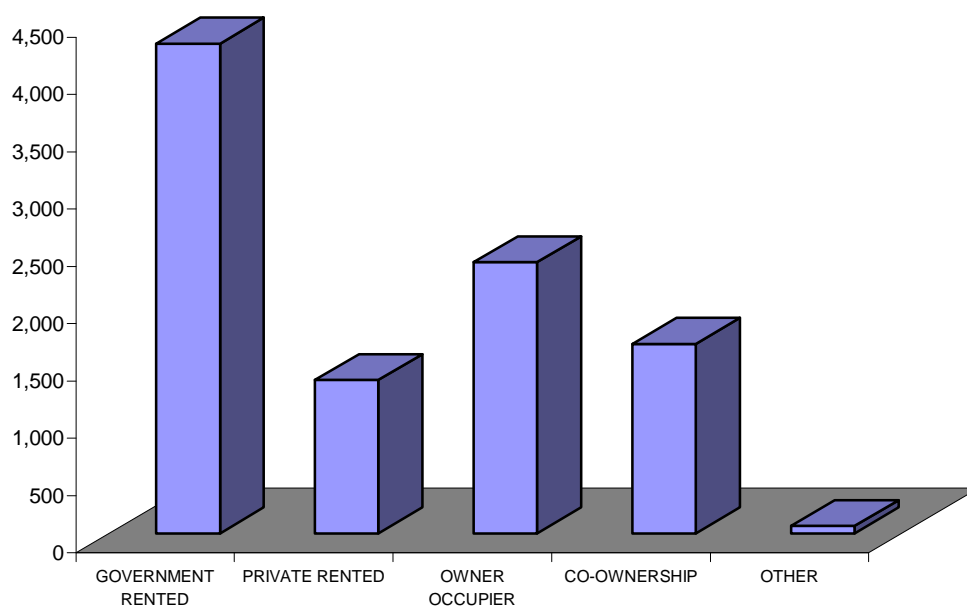
DISTRIBUTION OF HOUSEHOLDS, 2001



**TABLE 19: Distribution of Households by Number of Persons per Household
and Tenure, 2001 Census**

<u>NUMBER OF PERSONS</u>	<u>TENURE</u>					<u>TOTAL</u>
	<u>GOVERNMENT RENTED</u>	<u>PRIVATE RENTED</u>	<u>OWNER OCCUPIER</u>	<u>CO- OWNERSHIP</u>	<u>OTHER</u>	
1	953	471	394	190	5	2,013
2	1,350	406	597	405	10	2,768
3	796	179	444	364	15	1,798
4	680	177	640	517	21	2,035
5	326	73	212	133	9	753
6	121	24	53	34	3	235
7	26	5	15	11	2	59
8 and over	24	3	11	1	-	39
TOTAL	4,276	1,338	2,366	1,655	65	9,700

DISTRIBUTION OF HOUSEHOLDS BY TENURE



EDUCATION

**TABLE 20: Teaching Staff at Government and Private (primary and secondary) Schools,
by Qualifications, at 30th September 2007**

(a) Government Schools

<u>QUALIFICATIONS</u>	<u>MALES</u>	<u>FEMALES</u>	<u>TOTAL</u>
Qualified Graduate	125	167	292
Qualified Non Graduate	16	24	40
Unqualified	-	2	2
TOTAL	141	193	334

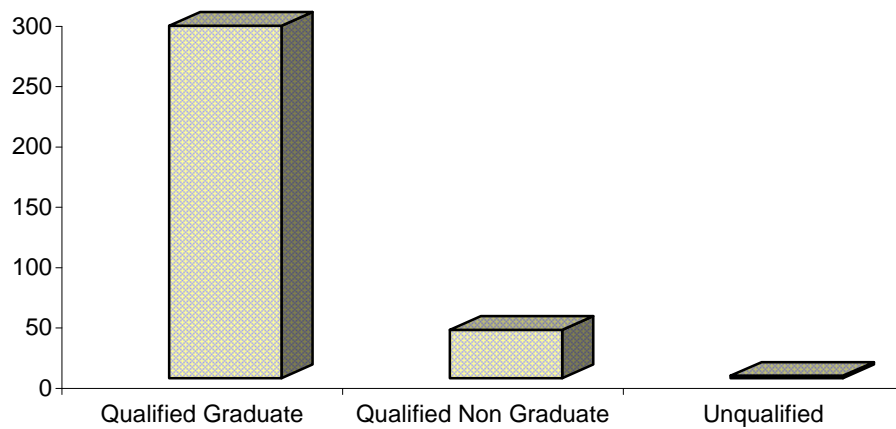
(b) Private Schools

<u>QUALIFICATIONS</u>	<u>MALES</u>	<u>FEMALES</u>	<u>TOTAL</u>
Qualified Graduate	9	25	34
Qualified Non Graduate	3	4	7
Unqualified	1	1	2
TOTAL	13	30	43

Note: (i) Services schools are not included.

**Teaching Staff at Government and Private (primary and secondary) Schools,
by Qualifications, at 30th September 2007**

TEACHING STAFF AT GOVERNMENT SCHOOLS



TEACHING STAFF AT PRIVATE SCHOOLS

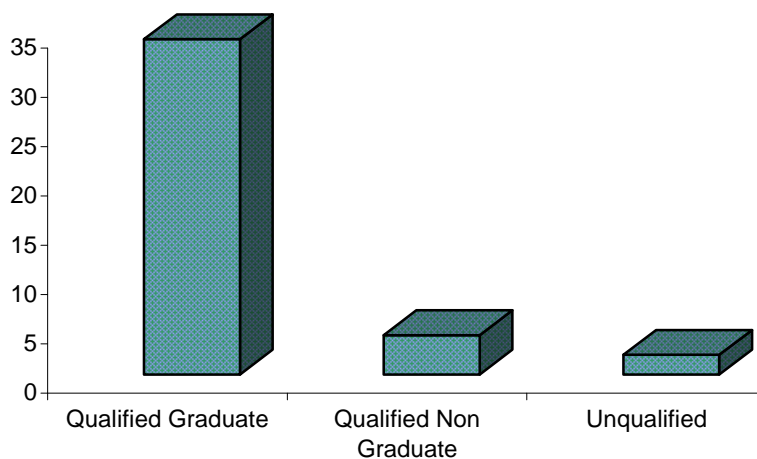


TABLE 21: Pupils Enrolled at Government Schools, by Age, 30th September 2007**(a) First and Middle Schools**

<u>AGE (YEARS)</u>	<u>MALE</u>	<u>FEMALE</u>	<u>TOTAL</u>
Less than 5	186	149	335
5 to 6	167	173	340
6 to 7	191	176	367
7 to 8	195	158	353
8 to 9	193	159	352
9 to 10	215	189	404
10 to 11	202	198	400
11 to 12	217	169	386
TOTAL	1,566	1,371	2,937

Note: Services children are not included.

(b) Secondary Schools

<u>AGE (YEARS)</u>	<u>MALE</u>	<u>FEMALE</u>	<u>TOTAL</u>
12 to 13	210	197	407
13 to 14	230*	213	443
14 to 15	213**	221	434
15 to 16	219***	227	446
16 to 17	78	130	208
Over 17	79	78	157
TOTAL	1,029	1,066	2,095

*Notes: *, ** and *** include 1, 2 and 1 boys respectively of Secondary school age who attend St Martin's Special School.
Services pupils included.*

HEALTH

TABLE 22: Hospital Summary, 2003 - 2007

<u>CATEGORY</u>	<u>2003</u>	<u>2004</u>	<u>2005</u>	<u>2006</u>	<u>2007</u>
<u>St. Bernard's Hospital</u>					
In-Patient Admissions	6,185	5,925	4,841	2,511	4,622
Av.In-Patients per Day	138	153	117	84	152
Out-Patient Attendances (i) (iii)	36,675	46,021	53,122	66,114	70,707
<u>Primary Care Centre</u>					
Total Out-Patients (ii)	180,929	220,070	212,027	194,835	192,931

Notes:

- (i) The figures have been adjusted and now include casualty out-patients.
- (ii) The figures in respect of 2002 onwards have been revised to include District and Physiotherapy.
- (iii) The figures for 2004 and 2005 have been revised to include Dressings, Plasters and Physio.

TABLE 23: Laboratory Confirmed Notifiable Diseases, 2005 - 2007

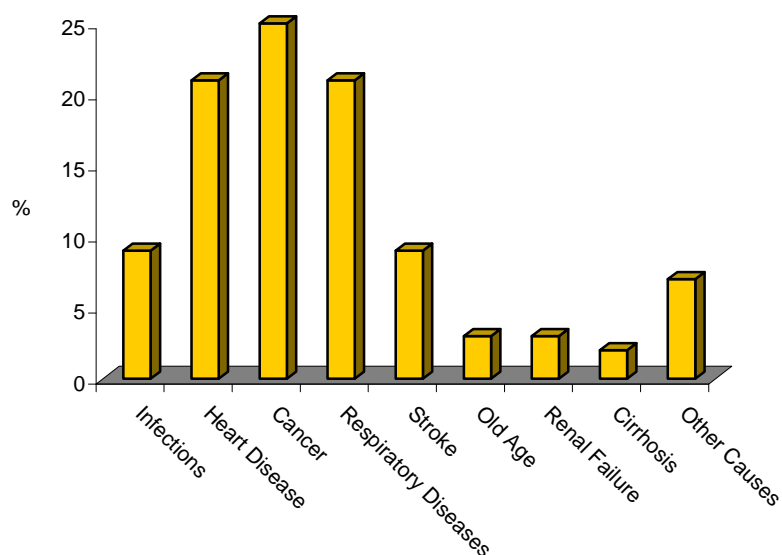
	<u>2005</u>	<u>2006</u>	<u>2007</u>
Campylobacter Jejuni	38	48	67
Rotavirus	50	27	55
Salmonella	28	22	14
Shigella	4	-	-
Tuberculosis	1	5	1
Gonorrhoea	-	1	3
Hepatitis A	3	-	4
Hepatitis B	6	5	1
Meningitis	1	-	-
Whooping Cough	-	-	-
Adenovirus	1	18	4
Respiratory Syncytial Virus	29	14	26
Mycoplasma Pneumoniae	1	31	44
Others	44	34	30
TOTAL	206	205	249

Source: Gibraltar Health Authority/
Primary Care Centre

TABLE 24: Cause of Death (%), 2005 - 2007

<u>CAUSE</u>	<u>2005</u> <u>(%)</u>	<u>2006</u> <u>(%)</u>	<u>2007</u> <u>(%)</u>
Heart Disease	29	24	21
Cancer	22	22	25
Respiratory Diseases	18	17	21
Stroke	9	15	9
*Degenerative Diseases	9	10	-
Old Age	-	-	3
Renal Failure	-	-	3
Cirrhosis	-	-	2
Infections	7	6	9
Other Causes	4	3	7
Injuries and Poisoning	2	2	-
ALL CAUSES	100	100	100

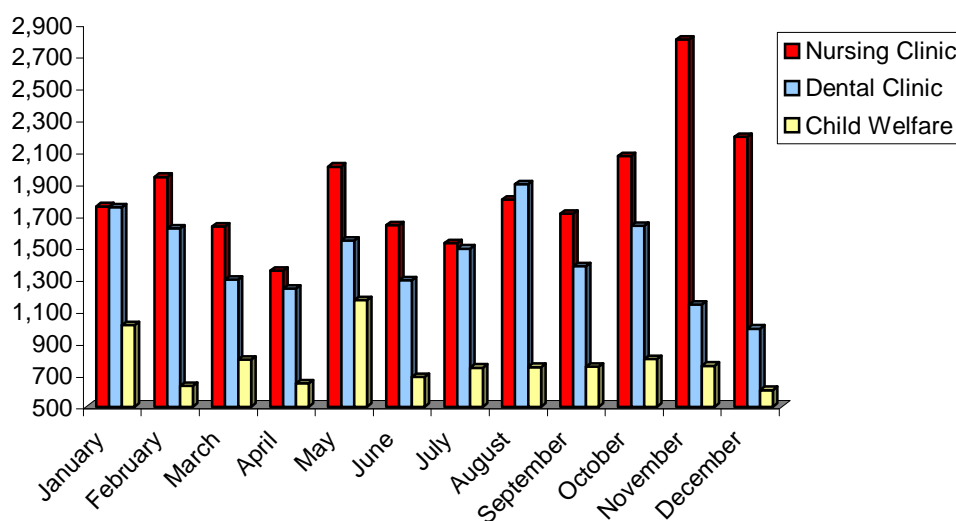
CAUSE OF DEATH (%), 2007



** Note : Following improvements in coding practices, the category "Degenerative" is being discontinued from 2007. Instead, three more causes (Old Age, Renal Failure and Cirrhosis) are presented. The category "Other" is inflated by these changes and its figures are not comparable with those of previous years.*

TABLE 25: Nursing, Dental and Child Welfare Clinic Activity, 2006 - 2007

<u>MONTH</u>	<u>NURSING CLINIC ACTIVITY</u>		<u>DENTAL CLINIC ACTIVITY</u>		<u>CHILD WELFARE CLINIC ACTIVITY</u>	
	<u>2006</u>	<u>2007</u>	<u>2006</u>	<u>2007</u>	<u>2006</u>	<u>2007</u>
January	1,465	1,756	1,405	1,751	954	1,011
February	1,365	1,941	1,420	1,617	1,090	631
March	2,027	1,631	1,575	1,297	1,149	796
April	1,715	1,353	1,049	1,239	690	647
May	1,736	2,005	1,359	1,541	1,109	1,169
June	1,760	1,637	1,842	1,292	692	685
July	1,454	1,525	992	1,491	615	745
August	1,779	1,799	1,161	1,896	704	749
September	1,631	1,711	1,519	1,382	716	752
October	1,691	2,071	1,554	1,634	1,217	798
November	2,822	2,803	1,896	1,141	958	757
December	1,438	2,191	1,133	990	571	604
TOTAL	20,883	22,423	16,905	17,271	10,465	9,344

NURSING, DENTAL & CHILD WELFARE CLINIC, 2007

PUBLIC SAFETY

ACCIDENTS

TABLE 26: Road Accidents and Casualties, 1976 - 2007

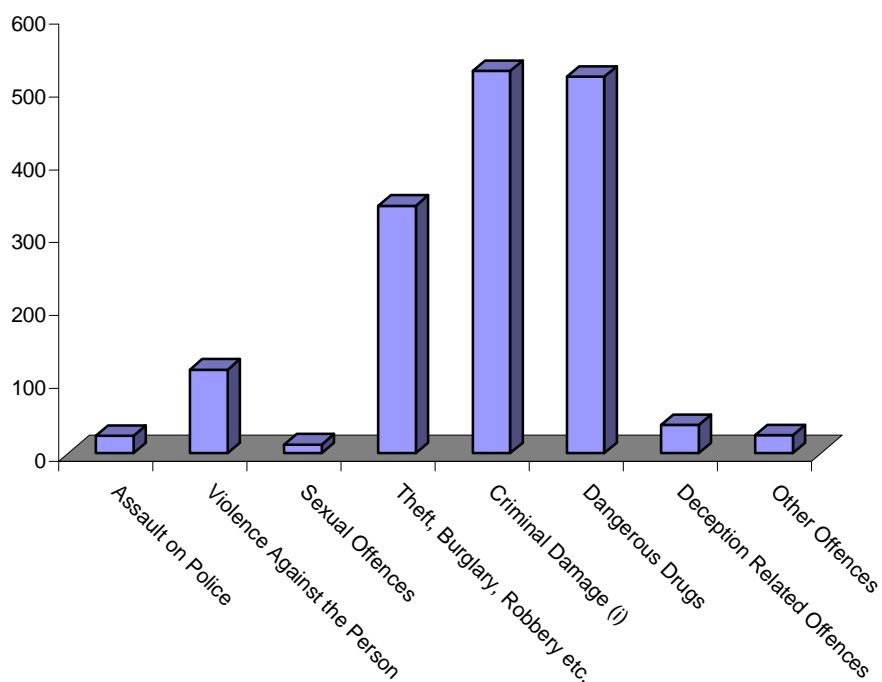
<u>YEAR</u>	<u>TOTAL NUMBER OF ACCIDENTS</u>	<u>CASUALTIES</u>	
		<u>KILLED</u>	<u>INJURED</u>
1976	781	1	90
1977	748	3	100
1978	778	-	112
1979	898	1	137
1980	1,105	-	135
1981	926	-	114
1982	1,029	4	154
1983	935	1	122
1984	922	2	139
1985	1,114	1	168
1986	1,035	1	131
1987	1,065	-	122
1988	1,027	4	108
1989	1,224	1	182
1990	1,189	2	234
1991	1,055	2	218
1992	1,027	4	153
1993	1,033	2	178
1994	986	3	215
1995	893	5	227
1996	677	1	182
1997	786	5	135
1998	966	3	176
1999	898	4	195
2000	913	-	182
2001	880	3	179
2002	853	1	185
2003	844	2	178
2004	903	-	178
2005	865	-	178
2006	838	-	198
2007	896	-	234

CRIME

TABLE 27: Criminal Offences, 2000 - 2007

<u>CAUSE OF INJURY</u>	<u>2000/01</u>	<u>2001/02</u>	<u>2002/03</u>	<u>2003/04</u>	<u>2004/05</u>	<u>2005/06</u>	<u>2006/07</u>	<u>2007*</u>
Assault on Police	23	12	47	39	36	27	39	24
Violence Against the Person	59	197	146	187	142	104	113	115
Sexual Offences	15	24	13	37	20	12	19	12
Theft, Burglary, Robbery etc.	640	905	614	876	749	735	407	340
Criminal Damage (i)	505	534	423	647	584	645	516	525
Dangerous Drugs	340	392	432	436	447	479	471	517
Deception Related Offences	73	66	67	148	62	63	46	39
Other Offences	23	60	29	39	30	28	17	25
TOTAL CRIMINAL OFFENCES	1,678	2,190	1,771	2,409	2,070	2,093	1,628	1,597

CRIMINAL OFFENCES, 2007



Notes: (i) Includes Serious and Minor Criminal Damage.

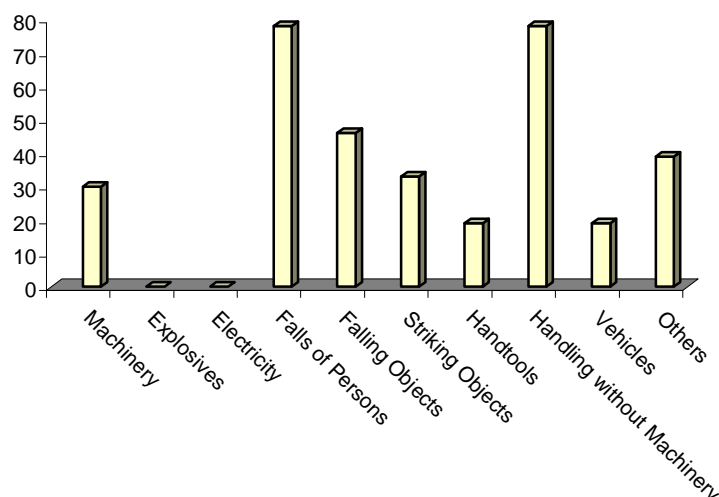
(ii) The figures relate to a calendar year.*

TABLE 28: Industrial Accidents by Cause of Injury, 1999 - 2007

CAUSE OF INJURY	1999	2000	2001	2002*	2003*	2004*	2005	2006	2007
Machinery	17	24	18	46	22	29	37	35	30
Explosives	2	-	2	-	1	-	1	-	-
Electricity	2	-	1	-	1	4	2	-	-
Falls of Persons	57	90	50	54	70	72	95	87	78
Falling Objects	26	25	9	24	22	33	16	27	46
Stepping on and Striking objects, Objects striking persons	15	35	14	10	42	32	25	30	33
Handtools	19	10	8	26	13	23	15	17	19
Handling without Machinery	53	50	46	43	49	59	55	79	78
Vehicles	16	1	-	7	9	7	7	15	19
Others	37	8	18	22	15	17	19	24	39
TOTAL	244	243	166	232	244	276	272	314	342

Notes:

- (i) Figures relate to industrial accidents compensated under the Employment Injuries Insurance Ordinance.
- (ii) "Others" refers to causes such as "poisonous substances", "ships" etc.
- (iii) *Changes in respect to the years 2002, 2003 and 2004 are due to a reclassification in the compilation of these statistics by the Department of Social Security.

INDUSTRIAL ACCIDENTS, 2007

FIRE STATISTICS

TABLE 29: Number of Calls Handled, 2000 - 2007

<u>TYPE OF CALL</u>	<u>2000</u>	<u>2001</u>	<u>2002</u>	<u>2003</u>	<u>2004</u>	<u>2005</u>	<u>2006</u>	<u>2007</u>
Fires	200	181	176	200	152	156	161	141
Special Services (i)	872	998	880	886	804	784	797	910
False Alarms	290	344	283	336	279	284	266	254
TOTAL	1,362	1,523	1,339	1,422	1,235	1,224	1,224	1,305

Notes : (i) Special Services refer to life rescues, pumping out flooded premises, oil pollution incidents etc.

(ii) Figures relate to the number of calls handled by the City Fire Brigade and exclude ambulance attendances

NUMBER OF CALLS HANDLED, 2000 - 2007

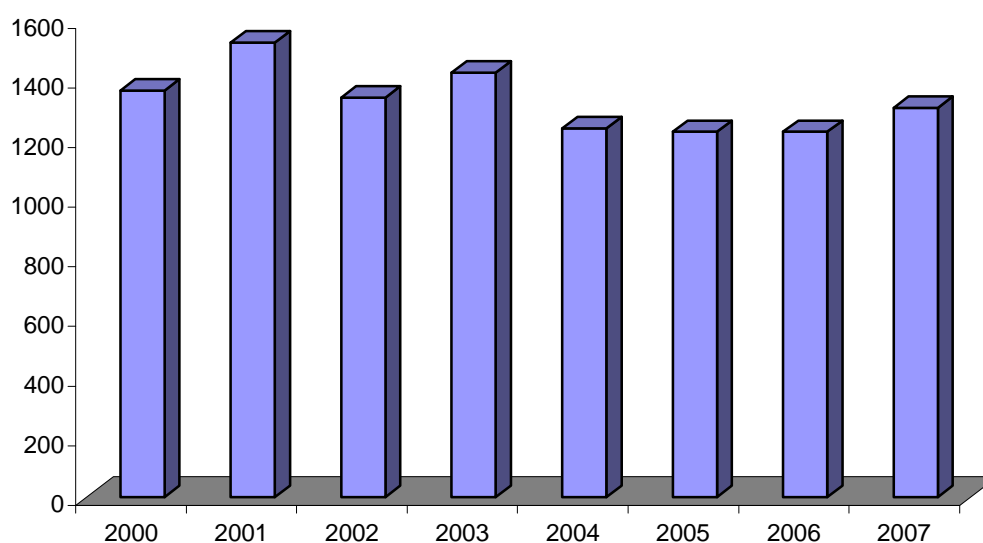


TABLE 30: Hazard Classification of Fires Attended, 2000 - 2007

<u>TYPE OF CALL</u>	<u>2000</u>	<u>2001</u>	<u>2002</u>	<u>2003</u>	<u>2004</u>	<u>2005</u>	<u>2006</u>	<u>2007</u>
Electrical	36	20	17	16	12	12	5	6
Buildings	42	65	64	82	55	70	71	45
Vegetation/Refuse	68	48	46	60	48	43	51	63
Motor Vehicles	25	22	21	23	17	11	17	14
Miscellaneous (ii)	29	26	28	19	20	20	17	13
TOTAL	200	181	176	200	152	156	161	141

Notes : (i) Figures relate to the number of fires attended by the City Fire Brigade.
(ii) Includes motor vessels.

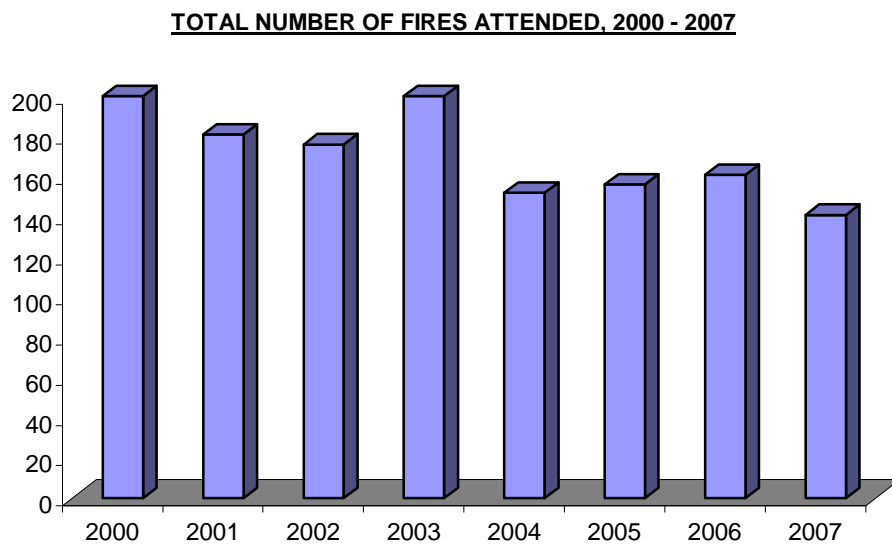


TABLE 31: Analysis of Special Services Attended, 2004 - 2007

<u>TYPE OF CALL</u>	<u>2004</u>		<u>2005</u>	
	<u>EMERGENCIES</u>	<u>REQUESTS</u>	<u>EMERGENCIES</u>	<u>REQUESTS</u>
Lift Rescues	243	-	217	-
Road Traffic Accidents	65	-	50	-
Entry into Locked Premises	35	196	21	175
Pumping Flooded Premises etc.	19	2	14	6
Rescue of Persons	7	-	8	-
Miscellaneous	53	136	77	169
Stand-By Jobs	-	-	1	-
Oil Pollution Incidents/ Fuel Leaks	4	35	5	26
Rescue of Animals	-	9	-	15
TOTAL	426	378	393	391
<u>TOTAL FOR YEAR</u>	<u>804</u>		<u>784</u>	
<u>TYPE OF CALL</u>	<u>2006</u>		<u>2007</u>	
	<u>EMERGENCIES</u>	<u>REQUESTS</u>	<u>EMERGENCIES</u>	<u>REQUESTS</u>
Lift Rescues	249	-	363	-
Road Traffic Accidents	40	-	29	-
Entry into Locked Premises	15	215	21	177
Pumping Flooded Premises etc.	12	4	22	1
Rescue of Persons	5	-	7	-
Floodings & Minor Water Leaks	-	-	-	127
Miscellaneous	45	172	60	62
Oil Pollution Incidents/ Fuel Leaks	1	26	2	26
Rescue of Animals	-	13	-	13
TOTAL	367	430	504	406
<u>TOTAL FOR YEAR</u>	<u>797</u>		<u>910</u>	

TABLE 32: Supposed Causes of Fire, 2007

<u>CAUSE</u>	<u>NUMBER</u>
Accidental by Person	19
Cooking Pot, Frying Pan, Grill or Oven Left Unattended	13
Careless Disposal of Smoking Items (Cigarettes, Matches etc.)	11
Defective Electrical Appliance or Electrical Installation	14
Arching Fuse-Box or Medium/High Voltage Cables	3
Defective Apparatus or Device of Motor Vehicle	6
Children Playing with Fire	15
Authorised Control, Burning not totally extinguished	-
Unauthorised Burning	8
Sparks from Hot Works, Grinder etc.	3
Fireworks	3
Deliberate Ignition/Suspected Arson	13
Overheated Materials, Oils Grease etc.	4
Spontaneous Combustion	2
Other Known Causes not specified above	3
Cause of Ignition Unknown	24
TOTAL	141

Note : The supposed cause of fire is determined by the Officer-in-Charge attending the incidents.

CIVIL ADMINISTRATION

PRISON STATISTICS

TABLE 33: Receptions into Prison and Population in Custody, 1997 - 2007

<u>YEAR</u>	<u>RECEPTIONS</u>	<u>POPULATION IN CUSTODY ON 31 DECEMBER</u>	<u>DISCHARGE</u>
1997	230	27	229
1998	171	19	179
1999	170	24	165
2000	215	18	221
2001	218	13	223
2002	246	21	238
2003	196	27	190
2004	157	19	165
2005	192	27	184
2006	202	30	199
2007	197	24	203

RECEPTIONS INTO PRISON, 1997 - 2007

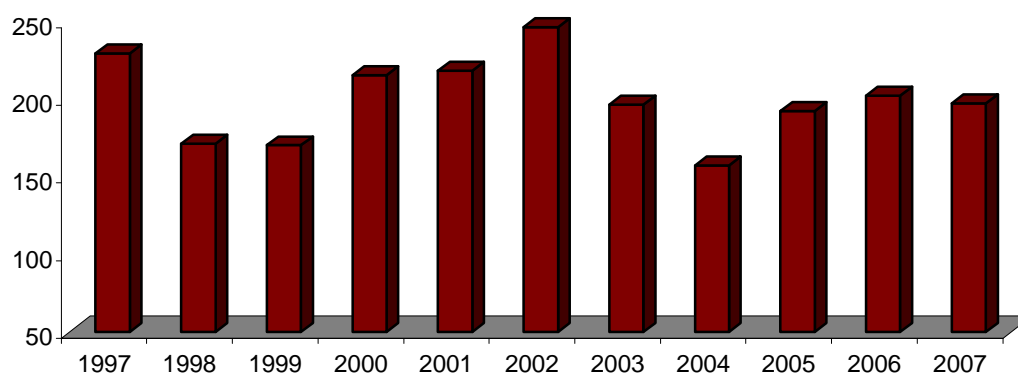
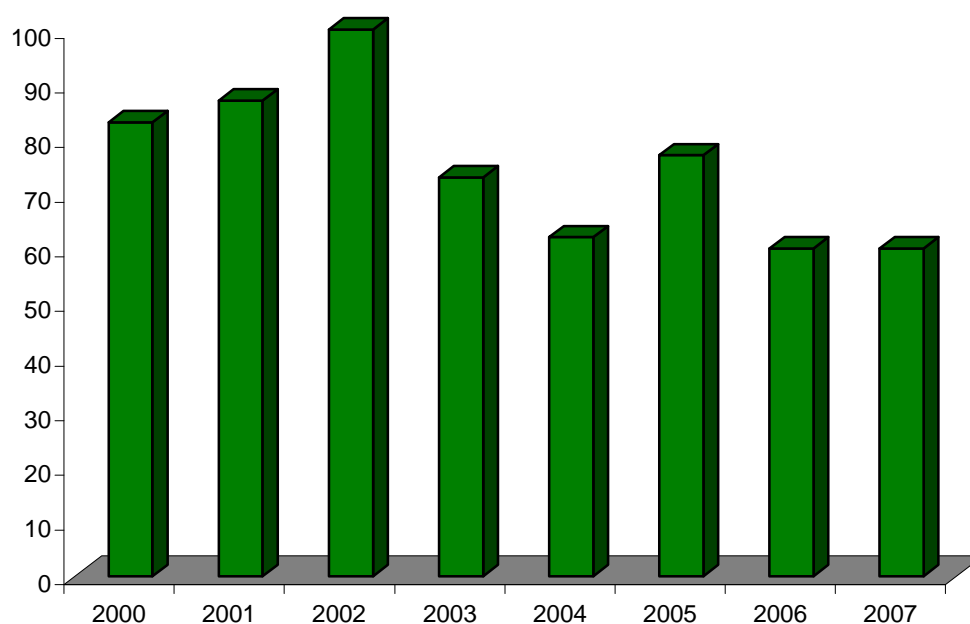


TABLE 34: Receptions into Prison by Age, 2000 - 2007

<u>AGE GROUP</u>	<u>2000</u>	<u>2001</u>	<u>2002</u>	<u>2003</u>	<u>2004</u>	<u>2005</u>	<u>2006</u>	<u>2007</u>
Under 16	4	6	1	0	0	2	8	2
16 - 20	30	43	47	36	35	32	25	26
21 - 25	53	44	53	37	27	45	35	34
26 - 50	120	117	128	109	85	104	123	121
51 and over	8	8	17	14	10	9	11	14
TOTAL	215	218	246	196	157	192	202	197

RECEPTIONS INTO PRISON BY AGE 16 - 25, 2000 - 2007



EMPLOYMENT

TABLE 35: No. of Employee Jobs by Sex, Nationality, Sector and Occupation, Oct 2006/Oct 2007

		<u>NUMBER OF EMPLOYEE JOBS</u>	
	<u>CLASSIFICATION</u>	<u>OCTOBER 2006</u>	<u>OCTOBER 2007</u>
	All Employee Jobs (i)	18,485	19,696
Sex	Male	10,811	11,622
	Female	7,674	8,074
Nationality	Gibraltar	10,346	10,541
	Other	8,139	9,155
Sector (ii)	Official	3,973	4,135
	Private	14,512	15,561
Occupation Group (iii)	Managers and Senior Officials	2,518	2,740
	Professional	1,144	1,103
	Associate Professional and Technical	2,166	2,368
	Administrative and Secretarial	3,365	3,399
	Skilled Trades	1,804	1,900
	Personal Service	788	917
	Sales and Customer Service	2,161	2,290
	Process, Plant and Machine Operatives	1,266	1,491
	Elementary	3,273	3,488

Notes : (i) As in the UK and as from October 1998, the Employment Survey makes reference to the number of employee jobs in the labour market, formerly known as the number of persons in employment. Thus a person holding both a full-time and a part-time job would be included in the count for each category.

(ii) "Official" sector refers to the Gibraltar Government and the MoD.

(iii) Occupations are classified according to the " UK Standard Occupational Classification 2000".

TABLE 36: Number of Employee Jobs by Industry, October 2006 and October 2007

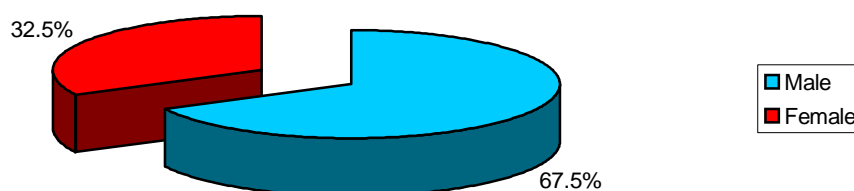
<u>INDUSTRY (i)</u>	<u>NUMBER OF EMPLOYEE JOBS</u>	
	<u>OCTOBER 2006</u>	<u>OCTOBER 2007</u>
Shipbuilding	268	203
Other Manufacture	192	208
Electricity and Water Supply	295	295
Construction	2,124	2,486
Wholesale and Retail Trade	2,747	2,816
Hotels and Restaurants	1,067	1,071
Transport and Communication	1,042	1,123
Financial Intermediation	1,738	1,889
Real Estate and Business Activities	2,059	2,453
Public Administration and Defence	2,214	2,252
Education	804	858
Health and Social Work	1,438	1,561
Other Services	2,497	2,481
TOTAL	18,485	19,696

Note: (i) The industry classification follows that of the UK's Standard Industrial Classification (S.I.C. 92).

TABLE 37: Number of Weekly-Paid Employee Jobs, October 2007

	<u>FULL-TIME</u>			<u>PART-TIME</u>			<u>TOTAL</u>		
	<u>OFFICIAL</u>	<u>PRIVATE</u>	<u>TOTAL</u>	<u>OFFICIAL</u>	<u>PRIVATE</u>	<u>TOTAL</u>	<u>OFFICIAL</u>	<u>PRIVATE</u>	<u>TOTAL</u>
Adult Male	297	3,407	3,704	5	207	212	302	3,614	3,916
Adult Female	99	1,066	1,165	199	681	880	298	1,747	2,045
Juvenile Male	-	23	23	-	13	13	-	36	36
Juvenile Female	-	1	1	-	7	7	-	8	8
TOTAL	396	4,497	4,893	204	908	1,112	600	5,405	6,005

PRIVATE SECTOR WEEKLY-PAID EMPLOYEE JOBS, OCT 2007



OFFICIAL SECTOR WEEKLY-PAID EMPLOYEE JOBS, OCT 2007

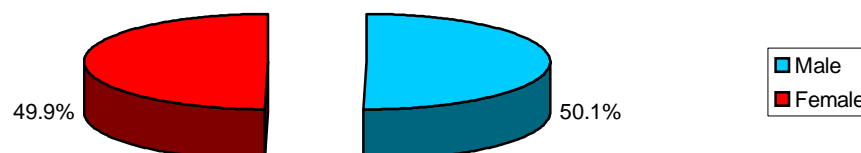
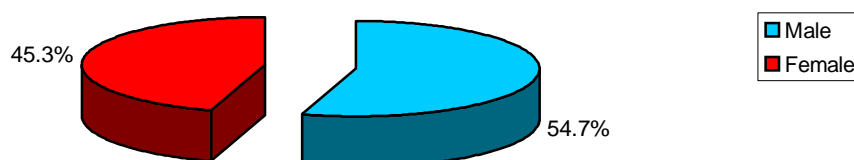


TABLE 38: Number of Monthly-Paid Employee Jobs, October 2007

	<u>FULL-TIME</u>			<u>PART-TIME</u>			<u>TOTAL</u>		
	<u>OFFICIAL</u>	<u>PRIVATE</u>	<u>TOTAL</u>	<u>OFFICIAL</u>	<u>PRIVATE</u>	<u>TOTAL</u>	<u>OFFICIAL</u>	<u>PRIVATE</u>	<u>TOTAL</u>
Adult Male	1,907	5,116	7,023	23	565	588	1,930	5,681	7,611
Adult Female	1,359	3,317	4,676	240	1,058	1,298	1,599	4,375	5,974
Juvenile Male	3	51	54	1	4	5	4	55	59
Juvenile Female	2	40	42	0	5	5	2	45	47
TOTAL	3,271	8,524	11,795	264	1,632	1,896	3,535	10,156	13,691

OFFICIAL SECTOR MONTHLY-PAID EMPLOYEE JOBS



PRIVATE SECTOR MONTHLY-PAID EMPLOYEE JOBS

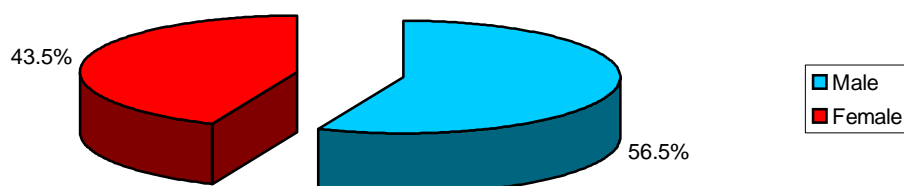


TABLE 39: Average Annual Earnings and Index, All Employee Jobs, 1980 - 2007

<u>DATE</u>		<u>AVERAGE EARNINGS</u> (£)	<u>INDEX</u>
October	1980	4,965.90	100.0
April	1981	5,042.56	101.5
October	1981	5,526.43	111.3
April	1982	5,929.44	119.4
October	1982	5,922.95	119.3
April	1983	5,532.11	111.4
October	1983	6,260.21	126.1
April	1984	6,309.29	127.1
October	1984	6,555.39	132.0
April	1985	6,526.62	131.4
October	1985	6,912.33	139.2
April	1986	7,035.17	141.7
October	1986	7,358.02	148.2
April	1987	7,802.00	157.1
October	1987	8,009.93	161.3
April	1988	8,363.85	168.4
October	1988	9,096.31	183.2
April	1989	9,593.92	193.2
October	1989	9,797.68	197.3
April	1990	10,073.99	202.9
October	1990	10,505.23	211.5
April	1991	10,936.11	220.2
October	1991	11,695.37	235.5
April	1992	11,966.09	241.0
October	1992	12,420.62	250.1
April	1993	12,267.22	247.0
October	1993	12,138.22	244.4
April	1994	12,228.87	246.3
October	1994	12,690.69	255.6
April	1995	12,787.56	257.5
October	1995	13,302.94	267.9
April	1996	13,037.86	262.5
October	1996	13,516.60	272.2
April	1997	13,532.35	272.5
October	1997	13,524.87	272.4
April	1998	13,993.45	281.8
October	1998	14,394.72	289.9
October	1999	14,874.91	299.5
October	2000	15,164.52	305.4
October	2001	16,199.42	326.2
October	2002	16,802.96	338.4
October	2003	17,460.44	351.6
October	2004	17,834.25	359.1
October	2005	19,383.80	390.3
October	2006	20,470.57	412.2
October	2007	21,585.91	434.7

TABLE 40: Total Number of Employee Jobs, October 1980 - October 2007

<u>DATE</u>		<u>NUMBER</u>	<u>INDEX</u>
October	1980	11,841	100.0
April	1981	11,775	99.4
October	1981	11,655	98.4
April	1982	11,661	98.5
October	1982	11,647	98.4
April	1983	11,720	99.0
October	1983	11,490	97.0
April	1984	11,063	93.4
October	1984	11,115	93.9
April	1985	11,291	95.4
October	1985	11,626	98.2
April	1986	11,869	100.2
October	1986	12,507	105.6
April	1987	12,819	108.3
October	1987	13,078	110.4
April	1988	12,995	109.7
October	1988	13,610	114.9
April	1989	13,974	118.0
October	1989	13,880	117.2
April	1990	13,843	116.9
October	1990	14,219	120.1
April	1991	14,782	124.8
October	1991	15,098	127.5
April	1992	14,710	124.2
October	1992	14,754	124.6
April	1993	14,284	120.6
October	1993	13,521	114.2
April	1994	12,868	108.7
October	1994	12,795	108.1
April	1995	12,702	107.3
October	1995	12,713	107.4
April	1996	12,980	109.6
October	1996	12,975	109.6
April	1997	13,000	109.8
October	1997	12,762	107.8
April	1998	12,840	108.4
October	1998	12,774	107.9
October	1999	12,936	109.2
October	2000	13,381	113.0
October	2001	13,931	117.7
October	2002	14,266	120.5
October	2003	15,419	130.2
October	2004	15,994	135.1
October	2005	16,874	142.5
October	2006	18,485	156.1
October	2007	19,696	166.3

TABLE 41: Number of Employee Jobs by S. I. C. (92) Sections, October 2007

S. I. C. (92) INDUSTRY SECTION

A	Agriculture, Hunting and Forestry	-
B	Fishing	-
C	Mining and Quarrying	-
D	Manufacturing	411
E	Electricity, Gas and Water Supply	295
F	Construction	2,486
G	Wholesale and Retail Trade; Repair of Consumer Goods	2,816
H	Hotels and Restaurants	1,071
I	Transport, Storage and Communication	1,123
J	Financial Intermediation	1,889
K	Real Estate, Renting and Business Activities	2,453
L	Public Administration and Defence	2,252
M	Education	858
N	Health and Social Work	1,561
O-Q	Other Community, Social and Personal Service Activities	2,481

TOTAL **19,696**

NUMBER OF EMPLOYEE JOBS, OCTOBER 2007

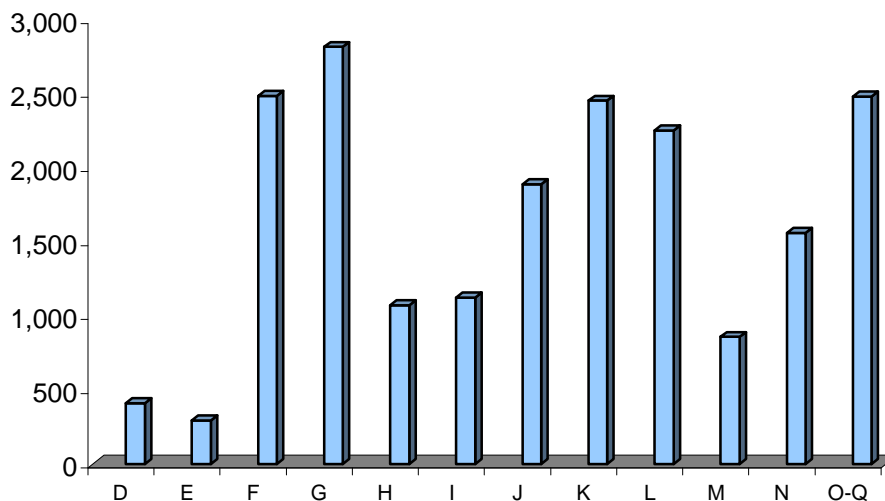


TABLE 42(a): Full-Time Monthly-Paid Adult Employee Jobs, 1984 - 2007

		<u>Full-time Monthly-Paid Adult Male Employee Jobs</u>		<u>Full-time Monthly-Paid Adult Female Employee Jobs</u>	
<u>Date</u>		<u>Nos Employed</u>	<u>Average Earnings</u>	<u>Nos Employed</u>	<u>Average Earnings</u>
April 1984		2,820	£742.85	1,166	£494.74
October 1984		2,844	£786.43	1,180	£501.60
April 1985		2,811	£796.39	1,258	£523.53
October 1985		2,948	£826.32	1,288	£536.57
April 1986		2,900	£849.71	1,370	£565.05
October 1986		3,018	£870.67	1,452	£570.03
April 1987		3,116	£943.54	1,642	£638.58
October 1987		3,121	£980.76	1,674	£651.08
April 1988		3,242	£1,036.49	1,730	£702.34
October 1988		3,457	£1,108.04	1,970	£731.21
April 1989		3,517	£1,157.21	1,971	£750.24
October 1989		3,511	£1,182.64	2,064	£776.57
April 1990		3,624	£1,252.01	2,116	£818.98
October 1990		3,640	£1,295.47	2,161	£864.18
April 1991		3,779	£1,387.36	2,212	£890.23
October 1991		3,953	£1,408.44	2,173	£968.81
April 1992		3,966	£1,464.86	2,208	£984.70
October 1992		4,303	£1,430.98	2,197	£1,003.45
April 1993		4,151	£1,458.76	2,187	£1,029.18
October 1993		3,905	£1,445.94	2,252	£1,020.64
April 1994		3,790	£1,466.76	2,232	£1,037.85
October 1994		3,885	£1,477.47	2,220	£1,074.46
April 1995		3,919	£1,488.17	2,263	£1,069.28
October 1995		4,017	£1,609.66	2,250	£1,094.07
April 1996		4,129	£1,515.47	2,260	£1,105.37
October 1996		4,241	£1,537.92	2,295	£1,126.61
April 1997		4,297	£1,574.75	2,301	£1,172.81
October 1997		4,283	£1,538.35	2,349	£1,171.38
April 1998		4,211	£1,599.48	2,371	£1,216.81
October 1998		3,695	£1,828.50	2,329	£1,267.23
October 1999		3,766	£1,856.56	2,548	£1,321.52
October 2000		3,935	£1,892.56	2,908	£1,361.63
October 2001		3,991	£2,027.50	2,954	£1,427.46
October 2002		4,548	£2,060.40	3,109	£1,457.66
October 2003		4,829	£2,167.52	3,460	£1,529.43
October 2004		5,278	£2,211.53	3,672	£1,586.88
October 2005		5,777	£2,393.16	3,967	£1,655.60
October 2006		6,528	£2,444.31	4,280	£1,717.76
October 2007		7,023	£2,652.17	4,676	£1,830.25

TABLE 42(b): Full-Time Weekly-Paid Adult Employee Jobs, 1984 - 2007

		<u>Full-time Weekly-Paid Adult Male Employee Jobs</u>		<u>Full-time Weekly-Paid Adult Female Employee Jobs</u>	
<u>Date</u>		<u>Nos Employed</u>	<u>Average Earnings</u>	<u>Nos Employed</u>	<u>Average Earnings</u>
April	1984	4,784	£121.37	1,201	£77.22
October	1984	4,816	£125.58	1,254	£75.36
April	1985	4,768	£123.10	1,180	£82.74
October	1985	4,840	£133.99	1,222	£86.24
April	1986	4,952	£134.05	1,486	£84.13
October	1986	5,283	£143.49	1,489	£91.06
April	1987	5,373	£147.99	1,453	£90.68
October	1987	5,406	£151.40	1,531	£95.60
April	1988	5,173	£153.35	1,528	£99.29
October	1988	5,357	£172.23	1,441	£106.66
April	1989	5,597	£182.61	1,474	£117.90
October	1989	5,232	£186.45	1,410	£124.25
April	1990	4,950	£187.39	1,420	£125.56
October	1990	5,149	£197.77	1,392	£132.65
April	1991	5,524	£198.68	1,428	£143.85
October	1991	5,645	£224.54	1,380	£145.65
April	1992	5,325	£218.59	1,267	£154.03
October	1992	5,027	£236.05	1,330	£160.71
April	1993	4,695	£219.62	1,291	£162.85
October	1993	4,209	£220.79	1,375	£156.13
April	1994	3,849	£217.16	1,297	£154.41
October	1994	3,622	£235.34	1,225	£162.85
April	1995	3,568	£233.94	1,176	£163.07
October	1995	3,522	£230.94	1,188	£164.45
April	1996	3,559	£232.03	1,173	£166.49
October	1996	3,532	£249.31	1,227	£172.15
April	1997	3,527	£229.49	1,179	£175.31
October	1997	3,400	£233.03	1,232	£165.26
April	1998	3,516	£239.05	1,236	£174.71
October	1998	3,581	£248.51	1,169	£185.74
October	1999	3,307	£262.75	1,118	£198.40
October	2000	3,276	£258.39	1,091	£200.45
October	2001	3,606	£284.98	1,162	£199.37
October	2002	3,247	£285.22	1,081	£196.95
October	2003	3,399	£300.44	1,164	£203.86
October	2004	3,362	£292.56	1,144	£210.50
October	2005	3,297	£316.41	1,143	£216.39
October	2006	3,428	£347.28	1,244	£234.16
October	2007	3,704	£341.47	1,165	£230.05

TABLE 43(a): Full-Time Monthly-Paid Adult Employee Jobs, Official Sector, 1984 - 2007

<u>OFFICIAL</u>					
		<u>Full-time Monthly-Paid Adult Male Employee Jobs</u>		<u>Full-time Monthly-Paid Adult Female Employee Jobs</u>	
<u>Date</u>		<u>Employee Jobs</u>	<u>Average Earnings</u>	<u>Employee Jobs</u>	<u>Average Earnings</u>
April	1984	1,976	£796.75	862	£529.35
October	1984	1,961	£848.06	854	£537.92
April	1985	1,868	£835.88	901	£559.36
October	1985	1,895	£875.99	888	£575.97
April	1986	1,904	£894.87	930	£604.57
October	1986	1,867	£917.52	950	£596.39
April	1987	1,877	£976.49	1,037	£680.46
October	1987	1,879	£1,031.29	1,028	£711.66
April	1988	1,963	£1,073.53	994	£758.10
October	1988	1,975	£1,170.57	1,105	£799.34
April	1989	1,909	£1,212.02	1,080	£799.97
October	1989	1,915	£1,248.70	1,091	£848.49
April	1990	1,997	£1,331.19	1,031	£920.47
October	1990	1,835	£1,389.42	1,066	£963.98
April	1991	1,769	£1,469.55	1,049	£984.37
October	1991	1,779	£1,463.57	1,010	£1,079.78
April	1992	1,674	£1,566.48	1,015	£1,128.54
October	1992	1,561	£1,648.40	942	£1,202.88
April	1993	1,524	£1,691.74	943	£1,222.16
October	1993	1,436	£1,728.86	950	£1,224.67
April	1994	1,436	£1,717.51	937	£1,222.69
October	1994	1,464	£1,775.08	937	£1,259.43
April	1995	1,450	£1,816.10	925	£1,266.64
October	1995	1,436	£2,198.66	906	£1,306.35
April	1996	1,457	£1,914.32	911	£1,314.72
October	1996	1,475	£1,983.88	897	£1,392.06
April	1997	1,502	£1,998.45	929	£1,396.48
October	1997	1,534	£1,965.64	920	£1,407.26
April	1998	1,545	£2,010.83	930	£1,437.03
October	1998	1,497	£2,069.59	929	£1,507.55
October	1999	1,433	£2,162.54	998	£1,586.17
October	2000	1,473	£2,252.48	1,077	£1,588.92
October	2001	1,443	£2,429.33	1,065	£1,739.10
October	2002	1,887	£2,320.06	1,172	£1,748.52
October	2003	1,937	£2,503.46	1,257	£1,841.51
October	2004	2,024	£2,520.22	1,219	£1,926.43
October	2005	2,010	£2,704.88	1,265	£2,007.28
October	2006	1,864	£2,765.46	1,272	£2,062.61
October	2007	1,907	£2,948.64	1,359	£2,161.08

TABLE 43(b): Full-Time Weekly-Paid Adult Employee Jobs, Official Sector, 1984 - 2007**OFFICIAL**

		<u>Full-time Weekly-Paid Adult Male Employee Jobs</u>		<u>Full-time Weekly-Paid Adult Female Employee Jobs</u>	
<u>Date</u>		<u>Employee Jobs</u>	<u>Average Earnings</u>	<u>Employee Jobs</u>	<u>Average Earnings</u>
April	1984	3,213	£127.75	567	£91.14
October	1984	3,107	£132.06	490	£90.55
April	1985	2,614	£123.23	455	£94.62
October	1985	2,618	£130.02	448	£97.50
April	1986	2,531	£141.29	619	£88.93
October	1986	2,527	£148.80	618	£92.91
April	1987	2,515	£146.64	604	£92.08
October	1987	2,426	£156.12	578	£99.30
April	1988	2,455	£155.44	588	£100.88
October	1988	2,431	£165.13	462	£115.85
April	1989	2,380	£179.40	439	£123.99
October	1989	2,235	£191.81	388	£136.57
April	1990	2,104	£182.57	383	£131.31
October	1990	2,032	£200.75	393	£143.28
April	1991	1,930	£195.65	372	£155.98
October	1991	1,828	£238.18	335	£157.14
April	1992	1,569	£218.39	306	£157.00
October	1992	1,576	£244.28	313	£165.57
April	1993	1,542	£214.36	283	£171.69
October	1993	1,375	£215.91	295	£168.03
April	1994	1,147	£216.20	276	£168.17
October	1994	1,067	£253.87	269	£166.15
April	1995	1,042	£250.78	257	£172.58
October	1995	1,021	£250.93	273	£165.11
April	1996	952	£265.68	264	£173.56
October	1996	958	£309.52	269	£203.23
April	1997	926	£245.12	261	£193.68
October	1997	886	£261.04	270	£177.00
April	1998	851	£260.87	268	£192.44
October	1998	875	£265.56	255	£206.63
October	1999	782	£314.08	236	£233.56
October	2000	768	£282.40	229	£227.54
October	2001	764	£338.50	240	£241.69
October	2002	368	£391.50	108	£257.72
October	2003	352	£481.46	114	£313.98
October	2004	283	£360.98	102	£320.31
October	2005	281	£382.57	96	£320.79
October	2006	263	£379.80	94	£328.96
October	2007	297	£408.13	99	£328.03

TABLE 44(a): Full-Time Monthly-Paid Adult Employee Jobs, Private Sector, 1984 - 2007**PRIVATE**

		<u>Full-time Monthly-Paid Adult Male Employee Jobs</u>		<u>Full-time Monthly-Paid Adult Female Employee Jobs</u>	
<u>Date</u>		<u>Employee Jobs</u>	<u>Average Earnings</u>	<u>Employee Jobs</u>	<u>Average Earnings</u>
April	1984	844	£626.06	304	£398.72
October	1984	883	£658.97	326	£409.22
April	1985	943	£722.99	357	£435.92
October	1985	1,053	£743.26	400	£451.86
April	1986	996	£769.37	440	£483.85
October	1986	1,151	£800.45	502	£522.51
April	1987	1,239	£897.46	605	£568.97
October	1987	1,242	£909.00	646	£557.31
April	1988	1,279	£983.47	736	£629.84
October	1988	1,482	£1,031.69	865	£647.25
April	1989	1,608	£1,096.66	891	£692.31
October	1989	1,596	£1,108.52	973	£698.36
April	1990	1,627	£1,161.53	1,085	£725.47
October	1990	1,805	£1,208.11	1095	£771.42
April	1991	2,010	£1,320.25	1,163	£808.04
October	1991	2,174	£1,366.62	1,163	£876.06
April	1992	2,292	£1,394.65	1193	£865.58
October	1992	2,742	£1,305.73	1,255	£853.71
April	1993	2,627	£1,322.54	1,244	£883.25
October	1993	2,469	£1,277.54	1,302	£868.79
April	1994	2,354	£1,310.25	1,295	£902.00
October	1994	2,421	£1,295.38	1283	£937.27
April	1995	2,469	£1,293.26	1338	£931.42
October	1995	2,581	£1,281.96	1344	£950.96
April	1996	2,672	£1,297.90	1349	£964.35
October	1996	2,766	£1,300.24	1398	£957.46
April	1997	2,795	£1,347.05	1372	£1,022.33
October	1997	2,749	£1,299.51	1,429	£1,018.63
April	1998	2,666	£1,361.08	1,441	£1,073.49
October	1998	2,198	£1,660.48	1,400	£1,107.99
October	1999	2,333	£1,669.11	1,550	£1,151.06
October	2000	2,462	£1,679.14	1,831	£1,229.70
October	2001	2,548	£1,799.60	1,889	£1,253.13
October	2002	2,661	£1,877.47	1,937	£1,283.62
October	2003	2,892	£1,942.32	2,203	£1,351.54
October	2004	3,254	£2,019.12	2,453	£1,418.78
October	2005	3,767	£2,226.07	2,702	£1,495.04
October	2006	4,664	£2,314.41	3,008	£1,570.36
October	2007	5,116	£2,540.70	3,317	£1,693.95

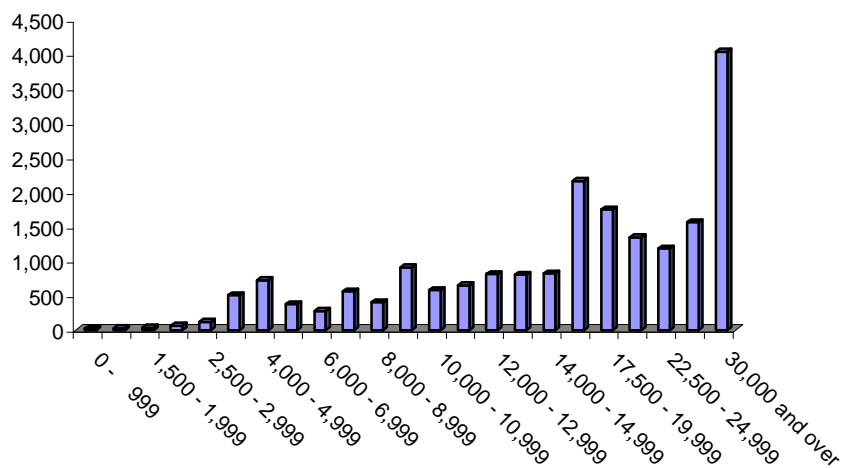
TABLE 44(b): Full-Time Weekly-Paid Adult Employee Jobs, Private Sector, 1984 - 2007

<u>PRIVATE</u>					
		<u>Full-time Weekly-Paid Adult Male Employee Jobs</u>		<u>Full-time Weekly-Paid Adult Female Employee Jobs</u>	
<u>Date</u>		<u>Employee Jobs</u>	<u>Average Earnings</u>	<u>Employee Jobs</u>	<u>Average Earnings</u>
April	1984	1,571	£108.35	634	£64.81
October	1984	1,715	£113.78	764	£65.51
April	1985	2,154	£122.93	725	£74.83
October	1985	2,222	£138.63	774	£79.75
April	1986	2,421	£126.47	867	£80.70
October	1986	2,756	£138.51	871	£89.75
April	1987	2,858	£149.17	849	£89.69
October	1987	2,980	£147.60	953	£93.36
April	1988	2,718	£171.47	940	£98.30
October	1988	2,926	£178.28	979	£102.37
April	1989	3,217	£184.96	1,035	£115.32
October	1989	2,997	£182.53	1,022	£119.66
April	1990	2,846	£190.93	1,037	£123.44
October	1990	3,117	£195.88	999	£128.64
April	1991	3,594	£200.23	1,056	£139.83
October	1991	3,817	£218.40	1,045	£142.14
April	1992	3,756	£218.66	961	£153.06
October	1992	3,451	£232.24	1,017	£159.21
April	1993	3,153	£222.24	1,008	£160.33
October	1993	2,834	£223.18	1,080	£152.80
April	1994	2,702	£217.57	1,021	£150.66
October	1994	2,555	£227.47	956	£161.91
April	1995	2,526	£225.99	919	£160.37
October	1995	2,501	£222.78	915	£164.24
April	1996	2,607	£219.54	909	£164.41
October	1996	2,574	£266.74	958	£162.88
April	1997	2,601	£220.30	918	£167.41
October	1997	2,514	£223.16	962	£161.97
April	1998	2,665	£232.08	968	£169.81
October	1998	2,706	£243.23	914	£180.00
October	1999	2,525	£247.42	882	£189.21
October	2000	2,508	£251.09	862	£193.32
October	2001	2,842	£270.28	922	£188.34
October	2002	2,879	£271.45	973	£190.18
October	2003	3,047	£279.48	1,050	£192.39
October	2004	3,079	£286.23	1,042	£199.80
October	2005	3,016	£310.32	1,047	£207.57
October	2006	3,165	£344.54	1,150	£226.40
October	2007	3,407	£335.60	1,066	£220.88

TABLE 45: Distribution of Average Annual Earnings of All Employee Jobs, October 2007

£ PER ANNUM	<u>ALL EMPLOYEE JOBS</u>			<u>ALL MALE JOBS</u>			<u>ALL FEMALE JOBS</u>		
	<u>Full-Time</u>	<u>Part-Time</u>	<u>Total</u>	<u>Full-Time</u>	<u>Part-Time</u>	<u>Total</u>	<u>Full-Time</u>	<u>Part-Time</u>	<u>Total</u>
0 - 999	4	16	20	2	3	5	2	13	15
1,000 - 1,499	5	23	28	4	4	8	1	19	20
1,500 - 1,999	11	21	32	10	6	16	1	15	16
2,000 - 2,499	10	51	61	6	11	17	4	41	45
2,500 - 2,999	33	85	118	30	20	50	3	64	67
3,000 - 3,999	122	383	505	77	80	157	44	301	345
4,000 - 4,999	102	617	719	53	394	447	48	230	278
5,000 - 5,999	204	170	374	93	46	139	113	122	235
6,000 - 6,999	105	173	278	45	29	74	59	144	203
7,000 - 7,999	202	358	560	80	34	114	123	323	446
8,000 - 8,999	233	169	402	87	39	126	146	128	274
9,000 - 9,999	749	160	909	351	23	374	401	135	536
10,000 - 10,999	450	128	578	246	17	263	207	108	315
11,000 - 11,999	563	82	645	399	15	414	163	67	230
12,000 - 12,999	708	101	809	455	16	471	253	85	338
13,000 - 13,999	735	66	801	503	8	511	232	58	290
14,000 - 14,999	754	65	819	480	10	490	274	55	329
15,000 - 17,499	2,058	103	2,161	1,224	16	1,240	837	86	923
17,500 - 19,999	1,682	68	1,750	1,013	5	1,018	672	63	735
20,000 - 22,499	1,296	49	1,345	799	13	812	497	38	535
22,500 - 24,999	1,128	55	1,183	708	12	720	420	45	465
25,000 - 29,999	1,526	35	1,561	1,000	6	1,006	526	30	556
30,000 and over	4,008	30	4,038	3,139	11	3,150	858	20	878
TOTAL	16,688	3,008	19,696	10,804	818	11,622	5,884	2,190	8,074

AVERAGE ANNUAL EARNINGS OF ALL EMPLOYEE JOBS, OCT 2007

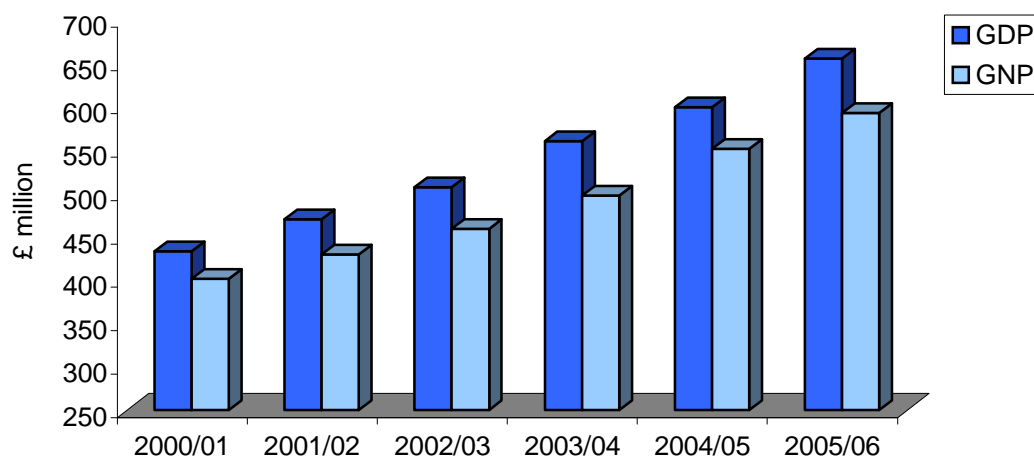


NATIONAL INCOME

TABLE 46: National Income, 2000 - 2006

	<u>£ million</u>		<u>£</u>	
<u>YEAR</u>	<u>GDP (factor cost)</u>	<u>GNP (factor cost)</u>	<u>GDP (factor cost per capita)</u>	<u>GNP (factor cost per capita)</u>
2000/01	433.61	401.44	15,863	14,686
2001/02	470.18	429.65	16,608	15,177
2002/03	507.17	458.94	17,770	16,080
2003/04	560.06	497.59	19,552	17,372
2004/05	599.18	551.50	20,831	19,173
2005/06	655.88	593.08	22,771	20,591

GDP AND GNP, 2000 - 2006



INDEX OF RETAIL PRICES

TABLE 47: Index of Retail Prices: All Items, 1997 - 2008

<u>MONTH</u>	<u>JAN 1966</u> <u>100</u>	<u>JUL 1970</u> <u>100</u>	<u>JUL 1973</u> <u>100</u>	<u>OCT 1980</u> <u>100</u>	<u>APR 1998</u> <u>100</u>	<u>% YEARLY</u> <u>INCREASE</u>
January 1997	1013.44	796.52	593.78	216.28	-	2.1
April	1022.00	803.25	598.80	218.11	-	1.3
July	1023.08	804.10	599.43	218.34	-	1.2
October	1027.86	807.86	602.23	219.36	-	1.7
January 1998	1025.66	806.13	600.94	218.89	-	1.2
April	1029.92	809.48	603.44	219.80	100.00	0.8
July	1033.73	812.48	605.67	220.61	100.37	1.0
October	1042.38	819.28	610.74	222.46	101.21	1.4
January 1999	1042.99	819.76	611.10	222.59	101.27	1.7
April	1038.05	815.87	608.20	221.53	100.79	0.8
July	1039.90	817.33	609.29	221.93	100.97	0.6
October	1044.23	820.73	611.82	222.85	101.39	0.2
January 2000	1044.54	820.97	612.00	222.92	101.42	0.1
April	1050.62	825.75	615.56	224.22	102.01	1.2
July	1057.01	830.77	619.30	225.58	102.63	1.6
October	1058.45	831.90	620.14	225.89	102.77	1.4
January 2001	1054.64	828.90	617.91	225.08	102.40	1.0
April	1070.71	841.53	627.32	228.51	103.96	1.9
July	1079.05	848.09	632.21	230.29	104.77	2.1
October	1082.35	850.68	634.14	230.99	105.09	2.3
January 2002	1072.98	843.31	628.65	228.99	104.18	1.7
April	1077.00	846.47	631.00	229.85	104.57	0.6
July	1081.12	849.71	633.41	230.73	104.97	0.2
October	1086.48	853.92	636.55	231.87	105.49	0.4
January 2003	1091.73	858.05	639.63	232.99	106.01	1.7
April	1106.56	869.71	648.32	236.16	107.44	2.7
July	1112.12	874.08	651.58	237.35	107.98	2.9
October	1119.43	879.83	655.86	238.91	108.69	3.0
January 2004	1118.81	879.34	655.50	238.78	108.63	2.5
April	1130.65	888.65	662.44	241.31	109.78	2.2
July	1137.76	894.24	666.60	242.83	110.47	2.3
October	1145.18	900.07	670.94	244.41	111.19	2.3
January 2005	1150.84	904.52	674.26	245.62	111.74	2.9
April	1165.77	916.26	683.01	248.81	113.19	3.1
July	1170.92	920.31	686.03	249.91	113.69	2.9
October	1181.74	928.81	692.37	252.22	114.74	3.2
January 2006	1182.77	929.62	692.97	252.44	114.84	2.8
April	1195.64	939.74	700.51	255.19	116.09	2.6
July	1204.60	946.78	705.76	257.10	116.96	2.9
October	1209.24	950.42	708.48	258.09	117.41	2.3
January 2007	1212.95	953.34	710.65	258.88	117.77	2.6
April	1227.47	964.75	719.16	261.98	119.18	2.7
July	1237.67	972.77	725.13	264.16	120.17	2.7
October	1242.92	976.89	728.21	265.28	120.68	2.8
January 2008	1243.95	977.70	728.81	265.50	120.78	2.6

TABLE 48: Index of Retail Prices (Food and All Items), 1997 - 2008

	<u>FOOD</u>		<u>ALL ITEMS</u>	
	<u>% Quarterly Increase</u>	<u>% Yearly Increase</u>	<u>% Quarterly Increase</u>	<u>% Yearly Increase</u>
January 1997	-0.2	3.8	0.3	2.1
April	0.5	2.1	0.8	1.3
July	0.2	1.3	0.1	1.2
October	1.2	1.8	0.5	1.7
January 1998	-0.1	1.9	-0.2	1.2
April	1.3	2.7	0.4	0.8
July	-0.03	2.5	0.4	1.0
October	-0.2	1.1	0.8	1.4
January 1999	0.5	1.3	0.1	1.7
April	1.0	1.3	-0.5	0.8
July	-0.1	1.2	0.2	0.6
October	0.6	2.0	0.4	0.2
January 2000	-0.4	1.0	0.03	0.1
April	0.9	1.0	0.6	1.2
July	-0.4	0.7	0.6	1.6
October	0.4	0.5	0.1	1.4
January 2001	1.4	2.3	-0.4	1.0
April	1.3	2.6	1.5	1.9
July	1.1	4.2	0.8	2.1
October	1.0	4.8	0.3	2.3
January 2002	1.4	4.9	-0.9	1.7
April	0.2	3.8	0.4	0.6
July	0.6	3.3	0.4	0.2
October	0.03	2.3	0.5	0.4
January 2003	1.0	1.8	0.5	1.7
April	2.1	3.7	1.4	2.7
July	1.0	4.1	0.5	2.9
October	1.5	5.7	0.7	3.0
January 2004	0.02	4.7	-0.1	2.5
April	1.2	3.7	1.1	2.2
July	1.0	3.8	0.6	2.3
October	-0.5	1.6	0.7	2.3
January 2005	0.5	2.1	0.5	2.9
April	0.7	1.7	1.3	3.1
July	0.6	1.3	0.4	2.9
October	0.9	2.8	0.9	3.2
January 2006	0.5	2.7	0.1	2.8
April	0.6	2.7	1.1	2.6
July	0.6	2.7	0.7	2.9
October	0.6	2.4	0.4	2.3
January 2007	0.7	2.7	0.3	2.6
April	0.9	3.0	1.2	2.7
July	1.3	3.6	0.8	2.7
October	0.9	3.9	0.4	2.8
January 2008	1.7	4.8	0.1	2.6

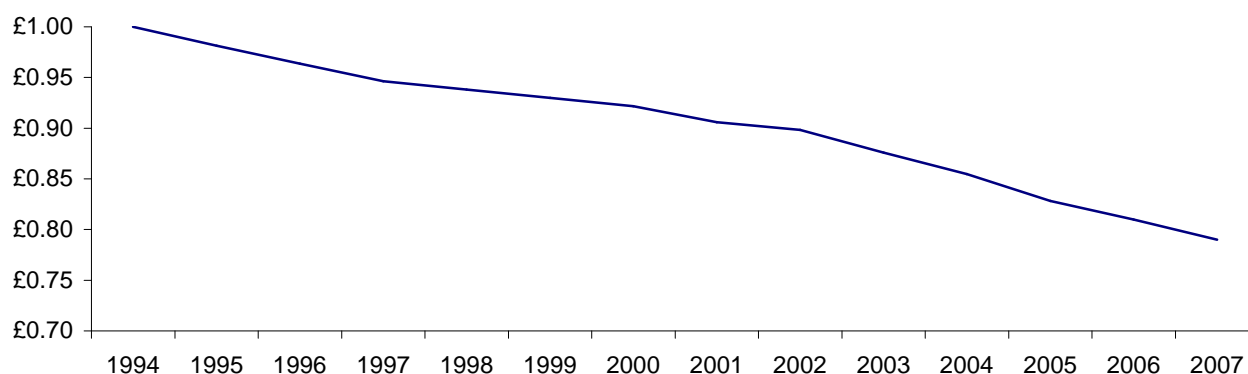
TABLE 49: Index of Retail Prices (Comparative Weights)

<u>SECTION</u>	<u>WEIGHT</u> <u>(w.e.f. July 1973)</u>	<u>WEIGHT</u> <u>(w.e.f. October 1980)</u>	<u>WEIGHT</u> <u>(w.e.f. April 1998)</u>
Foodstuffs	386.33	330.67	257.49
Alcoholic Drink and Tobacco	66.82	59.56	27.35
Clothing and Footwear	155.08	110.00	97.00
Durable Housing Goods	74.45	100.42	38.79
Housing	93.35	125.90	199.02
Services	55.28	75.39	85.61
Other Goods	76.69	64.77	86.27
Transport and Vehicles	92.00	133.29	208.47
	1000.00	1000.00	1000.00

TABLE 50: Internal Purchasing Power of the Pound, 1994 - 2007

<u>YEAR</u>	<u>1994</u>	<u>1995</u>	<u>1996</u>	<u>1997</u>	<u>1998</u>	<u>1999</u>	<u>2000</u>	<u>2001</u>	<u>2002</u>	<u>2003</u>	<u>2004</u>	<u>2005</u>	<u>2006</u>	<u>2007</u>
<u>1994</u>	£1.00	£1.02	£1.04	£1.06	£1.07	£1.08	£1.08	£1.10	£1.11	£1.14	£1.17	£1.21	£1.24	£1.27
<u>1995</u>	£0.98	£1.00	£1.02	£1.04	£1.05	£1.06	£1.06	£1.08	£1.09	£1.12	£1.15	£1.19	£1.21	£1.25
<u>1996</u>	£0.96	£0.98	£1.00	£1.02	£1.03	£1.04	£1.05	£1.06	£1.07	£1.10	£1.13	£1.16	£1.19	£1.22
<u>1997</u>	£0.95	£0.96	£0.98	£1.00	£1.01	£1.02	£1.03	£1.04	£1.05	£1.08	£1.11	£1.14	£1.18	£1.20
<u>1998</u>	£0.94	£0.96	£0.97	£0.99	£1.00	£1.01	£1.02	£1.04	£1.04	£1.07	£1.10	£1.13	£1.16	£1.19
<u>1999</u>	£0.93	£0.95	£0.96	£0.98	£0.99	£1.00	£1.01	£1.03	£1.04	£1.06	£1.09	£1.12	£1.15	£1.18
<u>2000</u>	£0.92	£0.94	£0.96	£0.97	£0.98	£0.99	£1.00	£1.02	£1.03	£1.05	£1.08	£1.11	£1.14	£1.17
<u>2001</u>	£0.91	£0.92	£0.94	£0.96	£0.97	£0.97	£0.98	£1.00	£1.01	£1.03	£1.06	£1.09	£1.12	£1.14
<u>2002</u>	£0.90	£0.92	£0.93	£0.95	£0.96	£0.97	£0.97	£0.99	£1.00	£1.03	£1.05	£1.08	£1.12	£1.13
<u>2003</u>	£0.88	£0.89	£0.91	£0.93	£0.93	£0.94	£0.95	£0.97	£0.98	£1.00	£1.02	£1.06	£1.09	£1.10
<u>2004</u>	£0.85	£0.87	£0.89	£0.90	£0.91	£0.92	£0.93	£0.94	£0.95	£0.98	£1.00	£1.03	£1.06	£1.09
<u>2005</u>	£0.83	£0.84	£0.86	£0.88	£0.88	£0.89	£0.90	£0.91	£0.92	£0.95	£0.97	£1.00	£1.02	£1.05
<u>2006</u>	£0.81	£0.82	£0.84	£0.85	£0.86	£0.87	£0.88	£0.90	£0.90	£0.92	£0.94	£0.98	£1.00	£1.02
<u>2007</u>	£0.79	£0.80	£0.82	£0.83	£0.84	£0.85	£0.86	£0.87	£0.88	£0.91	£0.92	£0.95	£0.98	£1.00

PURCHASING POWER OF THE POUND, 1994 - 2007



TRADE

TABLE 51: Summary of Imports and Exports (excluding petroleum products), 1975 - 2007

		£ million
<u>YEAR</u>	<u>IMPORTS (C.I.F.)</u>	<u>EXPORTS (F.O.B.)</u>
1975	18.4	1.4
1976	21.1	1.8
1977	28.0	2.5
1978	31.3	3.3
1979	39.1	4.7
1980	47.1	4.2
1981	44.1	5.7
1982	46.9	5.6
1983	43.3	6.6
1984	44.4	6.3
1985	70.6	10.8
1986	82.0	16.7
1987	111.7	19.6
1988	116.1	22.5
1989	165.5	42.1
1990	202.7	46.4
1991	219.1	12.9
1992	262.2	35.4
1993	267.6	62.3
1994	283.7	84.0
1995	258.7	73.6
1996	276.6	70.4
1997	216.8	49.2
1998	255.8	75.1
1999	299.8	74.3
2000	317.9	83.9
2001	302.5	83.7
2002	256.2	98.5
2003	286.1	90.1
2004	292.0	108.4
2005	303.0	110.0
2006	366.4	130.9
2007	425.7	151.8

- Notes:* (i) As from 1994, the figures have been adjusted to exclude the value of imported banknotes, stamps and other items in that subgroup. This adjustment has not been possible in respect of years prior to 1994.
- (ii) C.I.F. - Carriage, Insurance, Freight i.e. these costs are included in the import figures.
- (iii) F.O.B. - Free On Board i.e. insurance and transport costs are excluded from the export figures.

TABLE 52: Imports from E.U. Countries (excluding Petroleum Products), 2001 - 2007

£ 000's (C.I.F.)

COUNTRY	2001	2002	2003	2004	2005	2006	2007
United Kingdom	113,987	94,697	79,355	84,424	79,010	117,117	116,519
Spain	58,051	49,573	57,184	45,206	65,223	90,604	111,277
Germany	4,710	2,499	2,843	1,280	2,648	2,510	7,019
Netherlands	9,095	11,192	15,339	6,340	11,548	4,335	6,272
Denmark	1,257	638	1,038	1,524	2,464	4,386	3,495
France	1,347	1,189	1,941	1,660	4,957	2,570	3,120
Italy	1,218	1,524	1,289	605	462	772	1,046
Cyprus	n/a	n/a	n/a	653	589	509	824
Belgium	1,143	1,042	308	257	213	215	491
Ireland	669	397	392	483	846	684	332
Portugal	146	119	128	120	97	122	312
Austria	88	133	55	35	164	138	307
Greece	122	111	255	418	305	266	282
Hungary	n/a	n/a	n/a	60	175	117	162
Poland	n/a	n/a	n/a	7	20	122	64
Sweden	336	942	120	195	57	55	54
Finland	4	18	150	101	45	34	41
Luxembourg	0	0	2	0	4	13	7
Bulgaria	n/a	n/a	n/a	n/a	n/a	n/a	7
Malta	n/a	n/a	n/a	1	1	163	3
Czech Republic	n/a	n/a	n/a	1	19	0	3
Romania	n/a	n/a	n/a	n/a	n/a	n/a	2
Slovenia	n/a	n/a	n/a	3	1	41	1
Latvia	n/a	n/a	n/a	0	0	1	0
Slovak Republic	n/a	n/a	n/a	0	1	0	0
Estonia	n/a	n/a	n/a	0	0	0	0
Lithuania	n/a	n/a	n/a	0	0	0	0
TOTAL	192,173	164,074	160,399	143,373	168,849	224,774	251,640

Note: (i) C.I.F. - Carriage, Insurance, Freight i.e. these costs are included in the import figures.

IMPORTS FROM EU COUNTRIES
(excluding Petroleum Products), 2001 - 2007

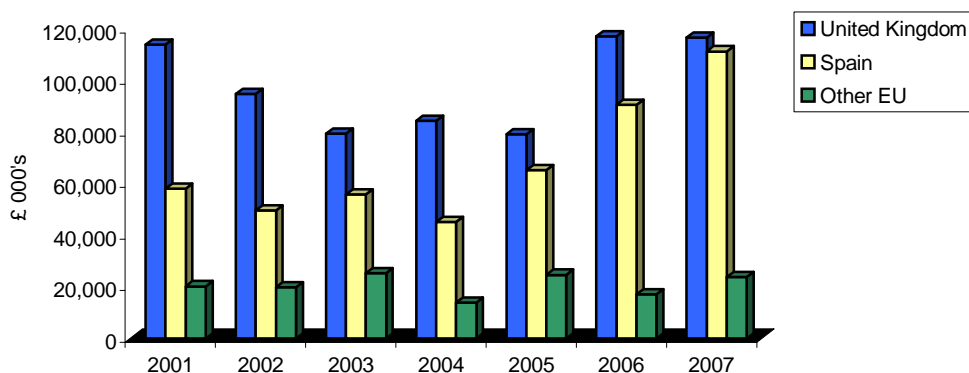


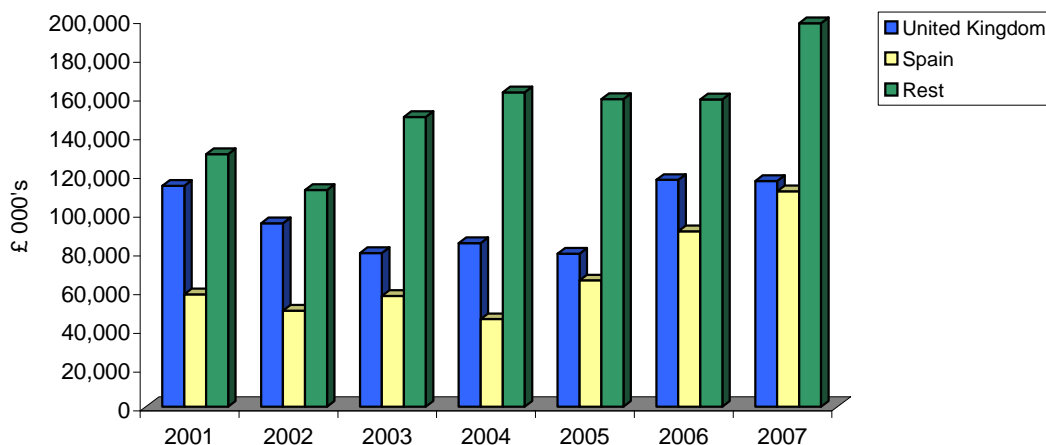
TABLE 53: Imports by Main Countries of Origin (excluding Petroleum Products), 2001 - 2007

£ 000's (C.I.F.)

COUNTRY	2001	2002	2003	2004	2005	2006	2007
United Kingdom	113,987	94,697	79,355	84,424	79,010	117,117	116,519
Spain	58,051	49,573	57,184	45,206	65,223	90,604	111,277
Germany	4,710	2,499	2,843	1,280	2,648	2,510	7,019
Netherlands	9,095	11,192	15,339	6,340	11,548	4,335	6,272
United States	4,825	6,996	3,301	2,295	3,243	3,250	5,617
Japan	16,493	23,790	20,730	3,022	4,565	3,227	4,776
Denmark	1,257	638	1,038	1,524	2,464	4,386	3,495
France	1,347	1,189	1,941	1,660	4,957	2,570	3,120
Antigua and Barbuda	0	15	0	0	4	0	2,065
Taiwan Province of China	36	34	48	69	20	27	1,855
Switzerland	2,048	2,847	2,044	1,492	1,289	1,336	1,747
Italy	1,218	1,524	1,289	605	462	772	1,046
Cyprus	55	63	580	653	589	509	824
Hong Kong	481	392	439	598	525	511	608
Singapore	138	188	115	181	233	339	525
Belgium	452	295	307	257	213	215	491
Norway	285	495	416	258	242	389	451
Israel	30	105	58	53	336	665	431
India	92	90	253	207	173	227	420
Other	87,591	59,357	98,544	141,253	124,386	132,143	157,183
TOTAL	302,191	255,979	285,824	291,377	302,130	365,132	425,741

Note : C.I.F. - Carriage, Insurance, Freight i.e. these costs are included in the import figures.

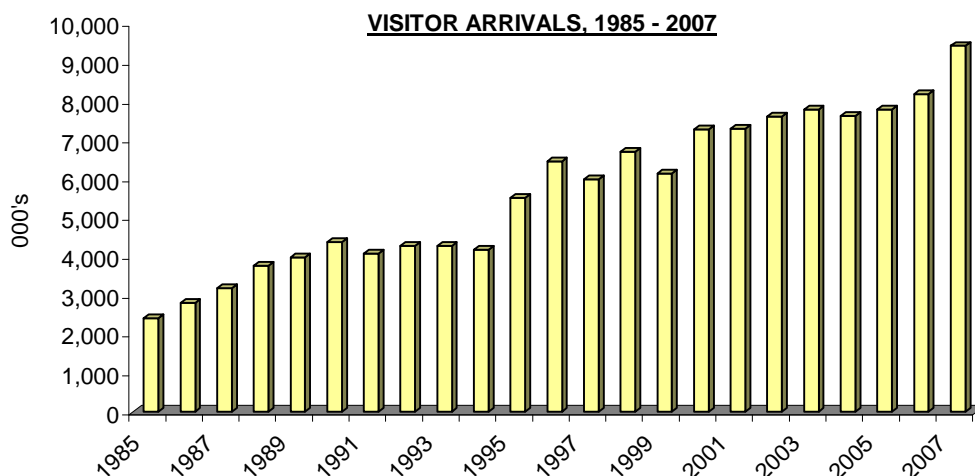
IMPORTS BY MAIN COUNTRIES OF ORIGIN
(excluding Petroleum Products), 2001 - 2007



TOURISM

TABLE 54: Visitor Arrivals in Gibraltar, 1977 - 2007

<u>YEAR</u>	<u>AIR</u>	<u>SEA</u>	<u>LAND</u>	<u>TOTAL</u>
1977	43,585	77,584	-	121,169
1978	47,066	72,300	-	119,366
1979	54,079	94,369	-	148,448
1980	51,035	102,721	-	153,756
1981	47,528	84,845	-	132,373
1982 (i)	46,180	81,063	46,595	173,838
1983	45,565	93,456	643,609	782,630
1984	47,813	80,654	477,571	606,038
1985 (ii)	73,664	77,952	2,260,039	2,411,655
1986	89,842	83,808	2,634,250	2,807,900
1987	123,287	97,955	2,963,248	3,184,490
1988	156,075	85,539	3,529,005	3,770,619
1989	162,438	78,014	3,743,725	3,984,177
1990	132,468	84,815	4,155,975	4,373,258
1991	96,829	63,655	3,909,741	4,070,225
1992	87,826	92,312	4,096,033	4,276,171
1993	80,449	81,560	4,117,986	4,279,995
1994	70,180	87,857	4,011,370	4,169,407
1995	72,017	102,924	5,329,717	5,504,658
1996	66,219	113,988	6,270,235	6,450,442
1997	73,698	87,043	5,834,434	5,995,175
1998	76,477	111,172	6,516,934	6,704,583
1999	81,922	145,221	5,917,946	6,145,089
2000	85,255	159,097	7,031,221	7,275,573
2001	92,553	145,987	7,048,108	7,286,648
2002	96,439	136,910	7,375,112	7,608,461
2003	114,484	164,052	7,502,815	7,781,351
2004	134,497	182,677	7,311,555	7,628,729
2005	150,303	206,030	7,434,420	7,790,753
2006	143,914	225,567	7,815,661	8,185,142
2007	159,666	292,675	8,977,761	9,430,102



Notes: (i) Land frontier with Spain opened on 15th December 1982 for pedestrians only and on a restricted basis.

(ii) Normalisation at the land frontier took effect on 5th February 1985.

(iii) Persons entering Gibraltar via the land frontier includes non-Gibraltarian frontier workers.

TABLE 55: All Visitor Arrivals, 2006 - 2007

<u>MONTH</u>	<u>SEA</u>			<u>AIR</u>			<u>LAND</u>			<u>TOTAL</u>		
	<u>2006</u>	<u>2007</u>	<u>%</u>	<u>2006</u>	<u>2007</u>	<u>%</u>	<u>2006</u>	<u>2007</u>	<u>%</u>	<u>2006</u>	<u>2007</u>	<u>%</u>
JANUARY	2,012	3,380	+68.0	8,117	8,486	+4.5	542,253	575,568	+6.1	552,382	587,434	+6.3
FEBRUARY	346	430	+24.3	9,210	8,729	-5.2	538,326	588,598	+9.3	547,882	597,757	+9.1
MARCH	3,513	1,086	-69.1	12,254	11,788	-3.8	620,859	714,388	+15.1	636,626	727,262	+14.2
APRIL	12,787	19,964	+56.1	13,376	13,211	-1.2	622,063	696,569	+12.0	648,226	729,744	+12.6
MAY	35,998	39,605	+10.0	15,264	15,788	+3.4	679,927	783,427	+15.2	731,189	838,820	+14.7
JUNE	22,540	24,178	+7.3	14,997	15,933	+6.2	644,676	774,757	+20.2	682,213	814,868	+19.4
JULY	24,863	29,041	+16.8	15,622	18,351	+17.5	694,271	845,586	+21.8	734,756	892,978	+21.5
AUGUST	34,205	37,356	+9.2	13,268	18,148	+36.8	793,050	908,362	+14.5	840,523	963,866	+14.7
SEPTEMBER	34,780	35,009	+0.7	12,751	16,237	+27.3	716,862	779,528	+8.7	764,393	830,774	+8.7
OCTOBER	30,180	45,687	+51.4	12,163	14,015	+15.2	715,639	841,878	+17.6	757,982	901,580	+18.9
NOVEMBER	9,966	34,380	+245.0	7,924	9,519	+20.1	617,669	731,995	+18.5	635,559	775,894	+22.1
DECEMBER	14,377	22,559	+56.9	8,968	9,461	+5.5	630,066	737,105	+17.0	653,411	769,125	+17.7
TOTAL	225,567	292,675	+29.8	143,914	159,666	+10.9	7,815,661	8,977,761	+14.9	8,185,142	9,430,102	+15.2

TABLE 56: Visitor Arrivals by Sea, 2006 - 2007

<u>MONTH</u>	<u>CRUISE SHIPS</u>			<u>YACHTS</u>			<u>OTHER</u>			<u>TOTAL</u>		
	<u>2006</u>	<u>2007</u>	<u>%</u>	<u>2006</u>	<u>2007</u>	<u>%</u>	<u>2006</u>	<u>2007</u>	<u>%</u>	<u>2006</u>	<u>2007</u>	<u>%</u>
JANUARY	1,571	2,847	+81.2	244	311	+27.5	197	222	+12.7	2,012	3,380	+68.0
FEBRUARY	-	-	-	291	347	+19.2	55	83	+50.9	346	430	+24.3
MARCH	2,802	204	-92.7	571	775	+35.7	140	107	-23.6	3,513	1,086	-69.1
APRIL	11,558	18,376	+59.0	1,074	1,395	+29.9	155	193	+24.5	12,787	19,964	+56.1
MAY	34,706	37,756	+8.8	1,144	1,668	+45.8	148	181	+22.3	35,998	39,605	+10.0
JUNE	20,975	22,270	+6.2	1,423	1,774	+24.7	142	134	-5.6	22,540	24,178	+7.3
JULY	23,030	27,099	+17.7	1,619	1,741	+7.5	214	201	-6.1	24,863	29,041	+16.8
AUGUST	32,258	35,064	+8.7	1,780	2,133	+19.8	167	159	-4.8	34,205	37,356	+9.2
SEPTEMBER	33,022	33,430	+1.2	1,579	1,396	-11.6	179	183	+2.2	34,780	35,009	+0.7
OCTOBER	28,568	44,027	+54.1	1,435	1,516	+5.6	177	144	-18.6	30,180	45,687	+51.4
NOVEMBER	8,585	33,042	+284.9	1,249	1,232	-1.4	132	106	-19.7	9,966	34,380	+245.0
DECEMBER	13,724	21,878	+59.4	538	642	+19.3	115	39	-66.1	14,377	22,559	+56.9
TOTAL	210,799	275,993	+30.9	12,947	14,930	+15.3	1,821	1,752	-3.8	225,567	292,675	+29.8

TABLE 57: Visitor Arrivals by Air, 2006 - 2007

<u>MONTH</u>	<u>STAYING IN GIBRALTAR</u>			<u>IN TRANSIT</u>			<u>TOTAL</u>		
	<u>2006</u>	<u>2007</u>	<u>%</u>	<u>2006</u>	<u>2007</u>	<u>%</u>	<u>2006</u>	<u>2007</u>	<u>%</u>
JANUARY	3,633	3,237	-10.9	4,484	5,249	+17.1	8,117	8,486	+4.5
FEBRUARY	4,342	3,523	-18.9	4,868	5,206	+6.9	9,210	8,729	-5.2
MARCH	5,700	4,543	-20.3	6,554	7,245	+10.5	12,254	11,788	-3.8
APRIL	5,609	5,083	-9.4	7,767	8,128	+4.6	13,376	13,211	-1.2
MAY	6,488	5,638	-13.1	8,776	10,150	+15.7	15,264	15,788	+3.4
JUNE	5,945	4,865	-18.2	9,052	11,068	+22.3	14,997	15,933	+6.2
JULY	6,081	5,911	-2.8	9,541	12,440	+30.4	15,622	18,351	+17.5
AUGUST	5,030	5,114	+1.7	8,238	13,034	+58.2	13,268	18,148	+36.8
SEPTEMBER	5,384	5,119	-4.9	7,367	11,118	+50.9	12,751	16,237	+27.3
OCTOBER	5,092	5,373	+5.5	7,071	8,642	+22.2	12,163	14,015	+15.2
NOVEMBER	3,535	4,139	+17.1	4,389	5,380	+22.6	7,924	9,519	+20.1
DECEMBER	3,419	3,616	+5.8	5,549	5,845	+5.3	8,968	9,461	+5.5
TOTAL	60,258	56,161	-6.8	83,656	103,505	+23.7	143,914	159,666	+10.9

TABLE 58: Visitor Arrivals by Land, 2006 - 2007

<u>MONTH</u>	<u>PERSONS</u>			<u>NUMBER OF MOTOR VEHICLES</u>			<u>NUMBER OF COACHES</u>		
	<u>2006</u>	<u>2007</u>	<u>%</u>	<u>2006</u>	<u>2007</u>	<u>%</u>	<u>2006</u>	<u>2007</u>	<u>%</u>
JANUARY	542,253	575,568	+6.1	141,970	157,904	+11.2	369	376	+1.9
FEBRUARY	538,326	588,598	+9.3	137,284	155,849	+13.5	539	506	-6.1
MARCH	620,859	714,388	+15.1	154,206	178,292	+15.6	849	893	+5.2
APRIL	622,063	696,569	+12.0	146,314	176,336	+20.5	908	954	+5.1
MAY	679,927	783,427	+15.2	161,036	196,183	+21.8	1,070	1,023	-4.4
JUNE	644,676	774,757	+20.2	155,387	197,013	+26.8	958	895	-6.6
JULY	694,271	845,586	+21.8	165,187	201,508	+22.0	862	744	-13.7
AUGUST	793,050	908,362	+14.5	168,355	218,735	+29.9	722	743	+2.9
SEPTEMBER	716,862	779,528	+8.7	161,063	195,801	+21.6	1,021	1,052	+3.0
OCTOBER	715,639	841,878	+17.6	162,704	205,786	+26.5	1,107	1,188	+7.3
NOVEMBER	617,669	731,995	+18.5	148,161	198,978	+34.3	638	631	-1.1
DECEMBER	630,066	737,105	+17.0	156,775	195,803	+24.9	479	402	-16.1
TOTAL	7,815,661	8,977,761	+14.9	1,858,442	2,278,188	+22.6	9,522	9,407	-1.2

TABLE 59: General Analysis, All Hotels, 1981 - 2007

<u>YEAR</u>	<u>ALL ARRIVALS</u>	(00's) <u>RNO</u>	<u>RNS</u>	% ROOM <u>OCCUPANCY</u>	(000's) <u>GNO</u>	<u>GNS</u>	% SLEEPER <u>OCCUPANCY</u>	AVERAGE <u>LGTH. OF STAY</u>
1981	33,417	n/a	n/a	n/a	519	188	36.2	5.6
1982	34,896	n/a	n/a	n/a	529	223	42.2	6.4
1983	33,142	n/a	n/a	n/a	546	210	38.4	6.3
1984	35,690	n/a	n/a	n/a	546	226	41.3	6.3
1985	55,119	n/a	n/a	n/a	552	282	51.0	5.1
1986	56,525	n/a	n/a	n/a	519	266	51.3	4.6
1987	64,349	n/a	n/a	n/a	535	278	52.3	4.3
1988	64,942	n/a	n/a	61.3	551	286	52.0	4.4
1989	67,934	n/a	n/a	53.3	501	220	44.0	3.2
1990	64,793	n/a	n/a	51.3	481	197	40.8	3.0
1991	43,193	n/a	n/a	50.6	502	178	35.5	4.1
1992	40,986	2,367	976	41.2	497	157	31.6	3.8
1993	39,123	1,946	941	48.4	391	157	40.2	4.0
1994	37,851	1,986	885	44.5	401	149	37.2	3.9
1995	45,056	1,919	884	46.1	369	144	39.2	3.2
1996	46,142	1,908	826	43.3	372	141	37.8	3.1
1997	48,420	1,904	900	47.3	370	144	39.0	3.0
1998	41,616	1,733	930	53.6	335	145	43.1	3.5
1999	42,031	1,792	991	55.3	351	154	43.7	3.7
2000	48,949	1,790	1,054	58.9	368	164	44.6	3.4
2001	53,776	1,789	1,149	64.2	366	179	48.9	3.3
2002	59,417	1,825	1,176	64.4	367	182	49.7	3.1
2003	61,743	1,855	1,192	64.2	367	188	51.2	3.0
2004	61,710	1,855	1,264	68.2	366	202	55.1	3.3
2005	58,796	1,772	1,216	68.6	349	196	56.2	3.3
2006	59,194	2,004	1,186	59.2	406	192	47.3	3.2
2007	63,691	2,202	1,274	57.8	434	200	45.9	3.1

Notes :

1. RNO - Room Nights Offered.
2. RNS - Room Nights Sold.
3. GNO - Guest Nights Offered.
4. GNS - Guest Nights Sold.
5. With effect from January 1992, hotels were required under the legislation to submit returns which included the % room occupancy figures. For the period 1988 to 1991, these figures were provided voluntarily by the hotels.

**TABLE 60: Arrivals, Guest Nights Sold, Sleeper Occupancy
and Average Length of Stay, 2006 - 2007**

2006

<u>MONTH</u>	<u>ARRIVALS</u>	<u>GUEST NIGHTS SOLD</u>	<u>% OCCUPANCY</u>	<u>AVGE. LENGTH OF STAY</u>
JANUARY	4,252	11,722	34.2	2.8
FEBRUARY	4,450	12,902	41.2	2.9
MARCH	5,536	16,910	49.5	3.0
APRIL	5,286	16,414	49.3	3.1
MAY	5,710	17,304	50.7	3.0
JUNE	5,473	18,358	55.4	3.4
JULY	4,958	18,798	54.0	3.8
AUGUST	4,549	17,169	49.3	3.8
SEPTEMBER	5,401	19,496	57.9	3.6
OCTOBER	5,359	18,215	52.7	3.4
NOVEMBER	4,372	13,716	40.7	3.1
DECEMBER	3,848	11,635	33.7	3.0
TOTAL	59,194	192,639	47.3	3.2

2007

<u>MONTH</u>	<u>ARRIVALS</u>	<u>GUEST NIGHTS SOLD</u>	<u>% OCCUPANCY</u>	<u>AVGE. LENGTH OF STAY</u>
JANUARY	3,860	11,948	31.3	3.1
FEBRUARY	4,104	14,378	41.7	3.5
MARCH	4,581	14,896	39.0	3.3
APRIL	5,039	17,194	46.8	3.4
MAY	5,883	16,410	45.5	2.8
JUNE	5,674	17,798	51.2	3.1
JULY	5,434	17,288	48.2	3.2
AUGUST	6,254	20,376	56.7	3.3
SEPTEMBER	6,252	21,043	59.7	3.4
OCTOBER	6,796	21,358	58.2	3.1
NOVEMBER	5,538	15,520	43.5	2.8
DECEMBER	4,276	11,320	30.9	2.7
TOTAL	63,691	199,529	45.9	3.1

TABLE 61: Arrivals, Room Nights Sold and % Room Occupancy, 2006 - 2007**2006**

<u>MONTH</u>	<u>ARRIVALS</u>	<u>ROOM NIGHTS SOLD</u>	<u>% OCCUPANCY</u>
JANUARY	4,252	7,628	45.1
FEBRUARY	4,450	8,161	53.0
MARCH	5,536	11,028	65.1
APRIL	5,286	9,970	60.3
MAY	5,710	10,551	62.6
JUNE	5,473	11,283	68.6
JULY	4,958	10,916	64.0
AUGUST	4,549	9,678	56.7
SEPTEMBER	5,401	11,740	70.8
OCTOBER	5,359	11,417	66.7
NOVEMBER	4,372	8,932	54.0
DECEMBER	3,848	7,292	42.9
TOTAL	59,194	118,596	59.2

2007

<u>MONTH</u>	<u>ARRIVALS</u>	<u>ROOM NIGHTS SOLD</u>	<u>% OCCUPANCY</u>
JANUARY	3,860	8,182	43.3
FEBRUARY	4,104	9,271	54.4
MARCH	4,581	9,682	51.3
APRIL	5,039	10,774	59.4
MAY	5,883	11,278	61.0
JUNE	5,674	11,814	66.2
JULY	5,434	10,675	58.1
AUGUST	6,254	12,119	65.8
SEPTEMBER	6,252	13,058	71.9
OCTOBER	6,796	13,052	69.3
NOVEMBER	5,538	10,157	55.4
DECEMBER	4,276	7,292	38.8
TOTAL	63,691	127,354	57.8

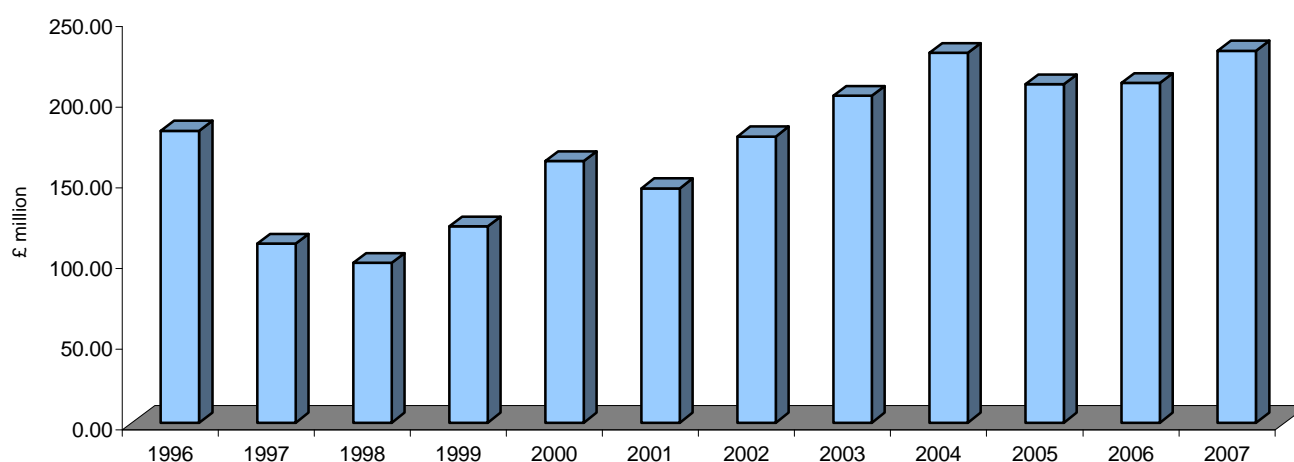
Note: The monthly Occupancy rates have been rounded off and need not necessarily equal the sum of the rounded-off total figure.

TABLE 62: Tourist Expenditure in Gibraltar (£ million), 1996 - 2007

	<u>1996</u>	<u>1997</u>	<u>1998</u>	<u>1999</u>	<u>2000</u>	<u>2001</u>	<u>2002</u>	<u>2003</u>	<u>2004</u>	<u>2005</u>	<u>2006</u>	<u>2007</u>
Visitor Arrivals at Hotels	8.43	17.36	10.65	12.49	12.46	13.16	16.28	17.58	18.59	18.52	20.30	26.88
Excursionists from Morocco	-	0.01	0.02	0.02	0.02	0.02	0.02	0.02	-	-	-	-
Excursionists from Cruises	3.08	1.84	3.81	5.77	5.40	4.22	5.14	6.60	7.19	7.44	8.07	10.74
Yacht Visitors	0.81	1.39	0.21	0.29	0.38	0.35	0.22	0.35	0.27	0.35	0.47	0.68
Visitors in Supplementary Accommodation	7.46	6.71	5.10	5.15	4.91	5.99	9.35	9.57	12.93	14.31	13.75	14.85
Visitors in Transit	0.73	0.86	0.37	0.34	0.44	1.56	1.85	1.05	1.53	0.57	0.76	1.02
Excursionists from Spain	160.42	82.69	78.89	97.51	138.40	120.00	144.53	167.42	188.65	168.58	167.15	176.41
TOTAL	181.00	111.00	99.05	121.57	162.01	145.31	177.38	202.58	229.15	209.77	210.50	230.58

Note: The yearly totals have been rounded off and need not necessarily equal the sum of the rounded-off expenditure categories.

TOURIST EXPENDITURE, 1996 - 2007



GOVERNMENT REVENUE AND EXPENDITURE

TABLE 63(a): Consolidated Fund Recurrent Revenue and Expenditure, 1984 - 2009 (i)

£ thousands

<u>YEAR</u>	<u>REVENUE</u>	<u>EXPENDITURE</u>
1984/85 (ii)	53,846	55,380
1985/86	64,500	61,054
1986/87	74,216	71,051
1987/88	76,553	78,216
1988/89	82,124	81,904
1989/90	87,716	90,158
1990/91	90,834	96,147
1991/92	87,185	83,129
1992/93	72,847	76,160
1993/94	69,850	72,047
1994/95	69,413	69,566
1995/96	71,971	71,483
1996/97	76,435	78,121
1997/98 (v)	119,797	104,731
1998/99	131,076	113,527
1999/00	140,617	122,213
2000/01	147,851	137,397
2001/02	161,000	144,135
2002/03	166,263	157,488
2003/04	163,686	165,162
2004/05	181,585	177,783
2005/06	198,310	177,568
2006/07	212,246	185,739
2007/08 (iii)	231,191	216,087
2008/09 (iv)	231,804	220,456

Notes : (i) *These figures do not include certain revenues and expenditures provided for specific purposes and which are accounted for separately. Examples of these are the Social Insurance Funds which are used to fund state pensions and benefits and also the Group Practice Medical Scheme (G.P.M.S.)*

(ii) *Figures relate to Actual Recurrent Revenue and Expenditure from 1984/85 to 2006/07.*

(iii) *Forecast Outturn, 2007/08.*

(iv) *Estimate, 2008/09*

(v) *The Consolidated Fund from 1997/98 incorporates public sector revenue and expenditure which were, during the previous few years, accounted for in a number of Special Funds that have been wound up by statutory bodies and former Government-owned companies.*

TABLE 63(b): Overall Government Revenue and Expenditure, 1999 - 2008

£'million

<u>YEAR</u>	<u>REVENUE</u>	<u>EXPENDITURE</u>
1999/00	157.6	141.7
2000/01	167.2	155.5
2001/02	181.8	170.2
2002/03	186.2	179.0
2003/04	193.8	201.6
2004/05	217.6	210.8
2005/06	246.0	223.9
2006/07	261.2	234.0
2007/08	280.7	265.2

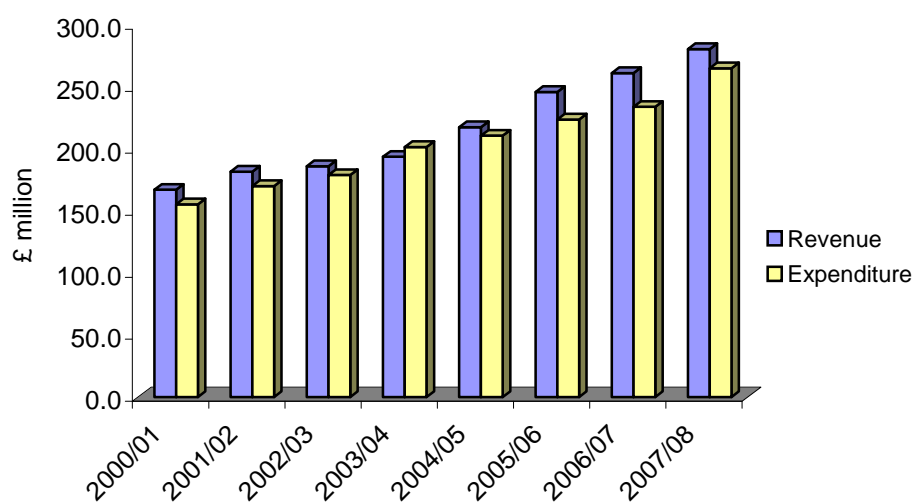
OVERALL REVENUE & EXPENDITURE, 2000-2008

TABLE 64(a): Consolidated Fund Recurrent Expenditure and Revenue Estimates, 2007 - 2008

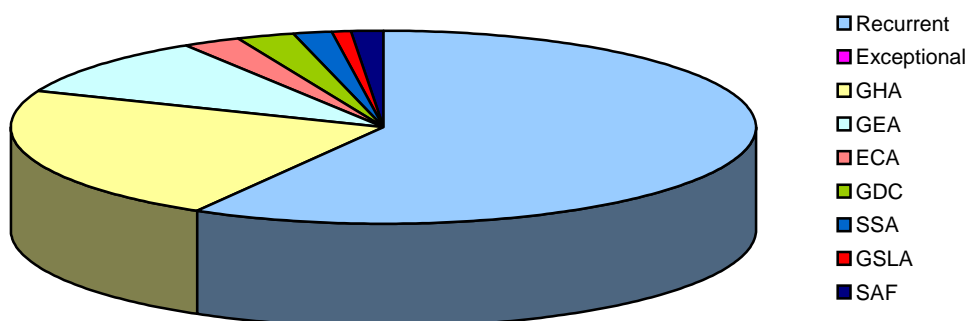
£'million

<u>REVENUE</u>	<u>FORECAST OUTTURN 2007/08 £</u>	<u>EXPENDITURE</u>	<u>FORECAST OUTTURN 2007/08 £</u>
Income Taxes	126.000	Education & Training	23.211
		Heritage, Culture, Youth & Sport	3.700
Duties, Taxes and Other Receipts	51.576	Housing	9.079
		Environment & Tourism	20.976
Gambling Fees, Taxes and Lottery	9.665	Family, Youth & Community Affairs	20.572
		Enterprise, Development Technology & Transport	26.960
Rates and Rents	15.544	Health & Civil Protection	31.663
		Administration	8.668
Departmental Fees and Receipts	18.228	Finance	13.274
		Employment, Labour & Industrial Relations	0.535
		Justice	12.814
Government Earnings	10.178	Immigration & Civil Status	2.265
		Parliament	1.256
		Gibraltar Audit Office	0.628
		Consolidated Fund Charges	30.486
		Contribution to Social Insurance Funds	10.000
TOTAL RECURRENT REVENUE	231.191	TOTAL RECURRENT EXPENDITURE	216.087

TABLE 64(b): Overall Government Revenue and Expenditure Analysis, 2007- 2008

£'million

	<u>REVENUE</u>	<u>EXPENDITURE</u>
Consolidated Fund Recurrent	231.2	154.8
Consolidated Fund Exceptional	-	-
Gibraltar Health Authority	28.4	60.0
Gibraltar Electricity Authority	17.1	26.6
Elderly Care Agency	0.7	6.9
Gibraltar Development Corporation	3.3	6.4
Social Services Agency	-	4.8
Gibraltar Sports & Leisure Authority	-	2.1
Social Assistance Fund	-	3.6
TOTAL	£280.7	£265.2

OVERALL EXPENDITURE ANALYSIS, 2007/08

Source: Ministry of Finance

FINANCIAL SERVICES

TABLE 65: Commercial Banks Liabilities, 1990 - 2007

£'million

YEAR (as at 31st March)	BALANCES			TOTAL LIABILITIES
	TOTAL DEPOSITS	FROM BANKS	OTHER LIABILITIES	
1990	1,350.5	476.6	505.5	2,332.6
1991	1,629.8	1,560.9	516.3	3,706.9
1992	1,970.1	2,165.0	818.8	4,953.9
1993	2,974.5	2,158.1	1,041.6	6,174.2
1994	3,398.4	1,785.2	1,270.0	6,453.5
1995	2,801.0	1,834.7	1,276.9	5,912.6
1996	2,861.6	2,138.2	1,485.6	6,485.4
1997	2,681.0	2,140.4	1,390.0	6,211.4
1998	2,957.8	1,749.4	1,695.6	6,402.8
1999	2,841.8	2,000.2	1,786.6	6,628.5
2000	2,138.4	1,615.0	850.6	4,604.1
2001	2,481.2	1,746.8	976.1	5,204.1
2002	2,465.9	2,349.6	740.6	5,556.0
2003	2,653.2	1,700.3	555.9	4,909.4
2004	2,656.5	1,700.3	408.7	4,765.5
2005	2,915.6	2,235.1	501.4	5,652.1
2006	3,622.0	2,783.6	532.6	6,938.2
2007	4,386.7	3,288.3	525.4	8,200.5

Note : (i) The Total Liabilities yearly figures have been rounded-off from the actual figures and need not necessarily equal the sum of the other itemised figures.

TOTAL DEPOSITS, 1990 - 2007

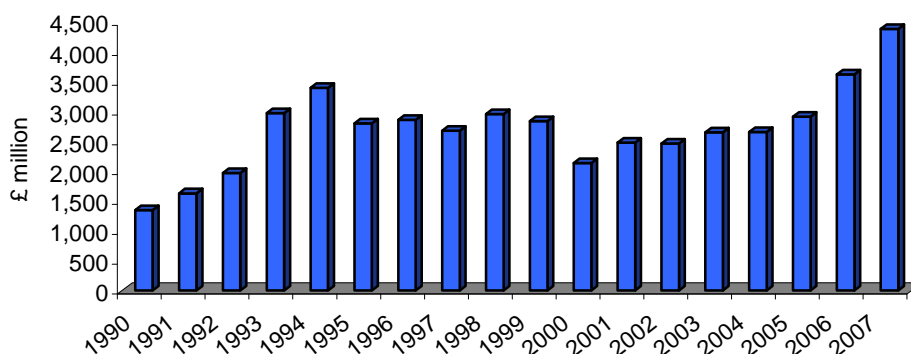


TABLE 66: Commercial Banks Assets, 1990 - 2007

£'million

YEAR (as at 31st March)	CASH	BALANCES WITH BANKS	LOANS AND ADVANCES	INVESTMENTS	OTHER ASSETS	TOTAL ASSETS
1990	3.7	1,183.7	673.2	395.3	76.7	2,332.6
1991	4.6	1,347.8	1,471.0	773.4	110.2	3,706.9
1992	4.4	1,605.4	1,850.1	1,415.2	79.0	4,953.9
1993	4.7	1,800.5	1,738.1	2,511.1	119.7	6,174.2
1994	7.0	1,960.0	1,263.2	3,110.5	112.8	6,453.5
1995	3.9	2,250.1	980.8	2,526.8	151.0	5,912.6
1996	4.9	2,487.6	1,012.7	2,833.1	147.1	6,485.4
1997	5.5	2,363.7	1,088.4	2,615.8	137.9	6,211.4
1998	6.0	2,765.1	1,069.0	2,462.6	100.0	6,402.8
1999	5.7	2,851.7	1,091.0	2,582.1	98.0	6,628.5
2000	6.4	3,293.4	1,180.4	6.3	117.6	4,604.1
2001	6.6	3,854.9	1,198.8	17.0	126.8	5,204.1
2002	7.8	4,113.9	1,300.7	18.5	115.1	5,556.0
2003	8.5	3,046.8	1,629.6	202.0	22.5	4,909.4
2004	10.7	2,763.2	1,772.7	187.2	31.7	4,765.5
2005	38.0	3,390.7	1,974.2	198.3	50.8	5,652.1
2006	9.9	4,536.3	2,080.9	266.4	44.8	6,938.2
2007	8.7	5,219.5	2,429.1	410.8	132.3	8,200.5

Note : (i) The Total Assets yearly figures have been rounded-off from the actual figures and need not necessarily equal the sum of the other itemised figures.

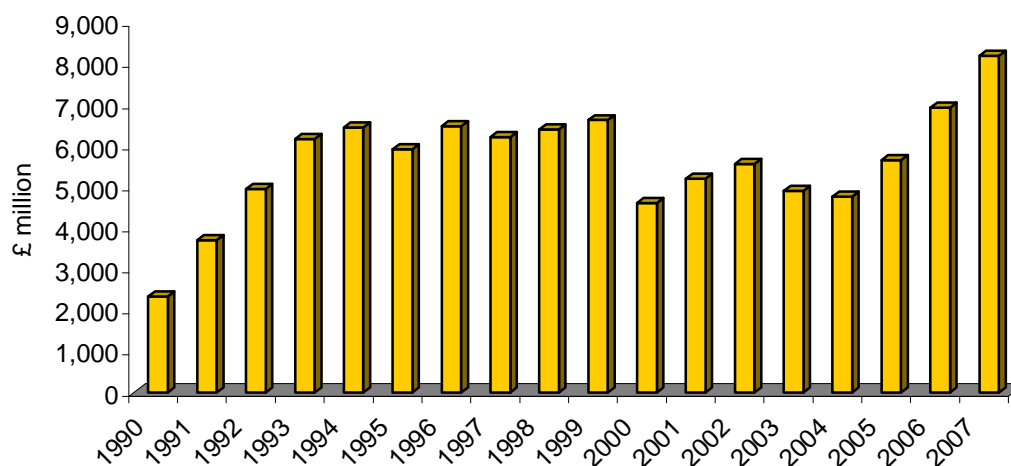
TOTAL ASSETS, 1990 - 2007

TABLE 67: Company Management and Trusteeships, as at 31st March, 2003 - 2007

	<u>2003</u>	<u>2004</u>	<u>2005</u>	<u>2006</u>	<u>2007</u>
Number of "Groups" conducting Company Management or Professional Trustee Services	78	82	82	82	86
Number of Licencees	354	418	434	448	504
Number of Trusts for which Trustee are provided	3,019	3,265	2,972	3,954	4,079
Number of Companies for which Company Managerial Services are provided	34,499	36,560	35,136	42,543	41,596
Number of Directorships provided	23,848	22,266	18,860	24,223	25,087
Number of Shareholders provided	23,581	23,392	18,659	25,702	25,986
Number of Registered Offices	*	32,922	31,403	30,356	30,730
Number of Secretarial Services provided	*	32,920	30,799	38,248	37,348

Note: * Information not previously collected.

TABLE 68: Licensees, as at 31 March, 1997 - 2007

	<u>97</u>	<u>98</u>	<u>99</u>	<u>00</u>	<u>01</u>	<u>02</u>	<u>03</u>	<u>04</u>	<u>05</u>	<u>06</u>	<u>07</u>
Banks	25	28	26	22	19	19	18	17	18	18	18
Insurance Companies	12	16	16	13	17	22	31	39	46	50	56
Insurance Intermediaries	17	17	22	24	27	29	27	28	29	30	30
Insurance Managers	3	4	8	7	7	7	6	6	8	8	8
Investment Firms	11	11	17	21*	24*	26*	23*	22*	25	26	33
Company Managers/ Professional Trustees	74	75	81	84	83	78	78	80	82	82	87

Notes: (i) Insurance Managers in 1996 did not require licensing.

(ii)* Investment firms have changed due to a reclassification by the Financial Services Commission.

TRANSPORT

TABLE 69: New Registrations, Road Vehicles, 1983 - 2007

<u>YEAR</u>	<u>MOTOR VEHICLES</u>		<u>MOTORCYCLES</u>	<u>TOTAL</u>
	<u>PRIVATE</u>	<u>COMMERCIAL</u>		
1983	979	134	261	1,374
1984	900	104	230	1,234
1985	2,044	138	190	2,372
1986	2,312	140	202	2,654
1987	2,187	340	212	2,739
1988	2,339	433	210	2,982
1989	2,299	400	289	2,988
1990	2,105	296	562	2,963
1991	1,405	230	3,187	4,822
1992	2,406	319	1,345	4,070
1993	2,456	221	730	3,407
1994	1,871	285	720	2,876
1995	1,683	174	673	2,530
1996	1,743	321	464	2,528
1997	1,451	229	493	2,173
1998	1,899	212	780	2,891
1999	2,476	233	965	3,674
2000	1,673	302	1,115	3,090
2001	1,556	228	1,053	2,837
2002	1,952	157	893	3,002
2003	1,763	318	766	2,847
2004	1,430	1,193	712	3,335
2005	1,156	555	775	2,486
2006	1,260	290	925	2,475
2007	1,318	255	1,029	2,602

NEW REGISTRATIONS, 1994 - 2007

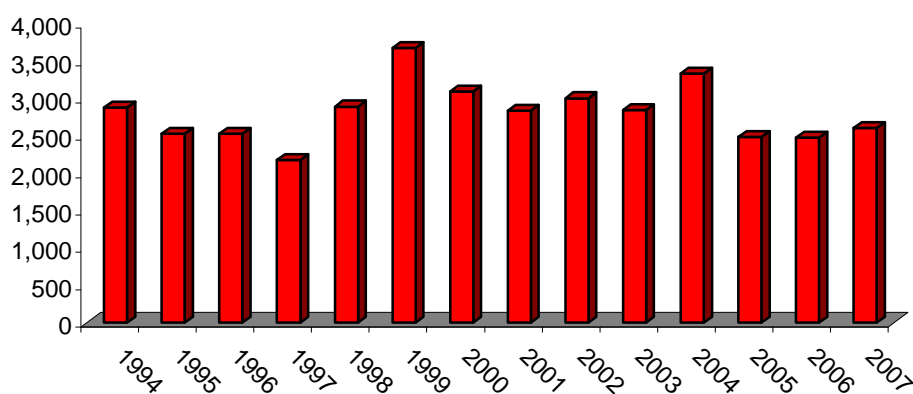


TABLE 70: Registered Vehicles, 1984 - 2007

<u>YEAR</u>	<u>MOTOR VEHICLES</u>		<u>MOTORCYCLES</u>	<u>TOTAL</u>
	<u>PRIVATE</u>	<u>COMMERCIAL</u>		
1984	8,479	835	1,358	10,672
1985	10,642	965	1,559	13,166
1986	12,954	1,100	1,761	15,815
1987	13,138	1,620	1,648	16,406
1988	15,455	1,978	1,903	19,336
1989	17,671	2,319	2,196	22,186
1990	19,808	2,450	2,774	25,032
1991	18,149	2,576	6,154	26,879
1992	23,972	1,853	7,546	33,371
1993	18,072	1,103	6,318	25,493
1994	18,471	1,108	6,343	25,922
1995	18,380	1,074	6,588	26,042
1996	19,023	1,551	6,557	27,131
1997	19,344	1,700	5,861	26,905
1998	19,993	1,796	5,908	27,697
1999	22,450	2,004	6,895	31,349
2000	25,838	2,317	8,511	36,666
2001	27,395	2,544	9,564	39,503
2002	12,855	1,367	5,735	19,957
2003	12,799	1,976	5,588	20,363
2004	13,856	2,620	6,179	22,655
2005	14,586	2,124	6,561	23,271
2006	14,746	2,255	7,129	24,130
2007	14,599	1,345	7,655	23,599

Note : The figures prior to 2002 include inactive records.

REGISTERED VEHICLES, 1996 - 2007

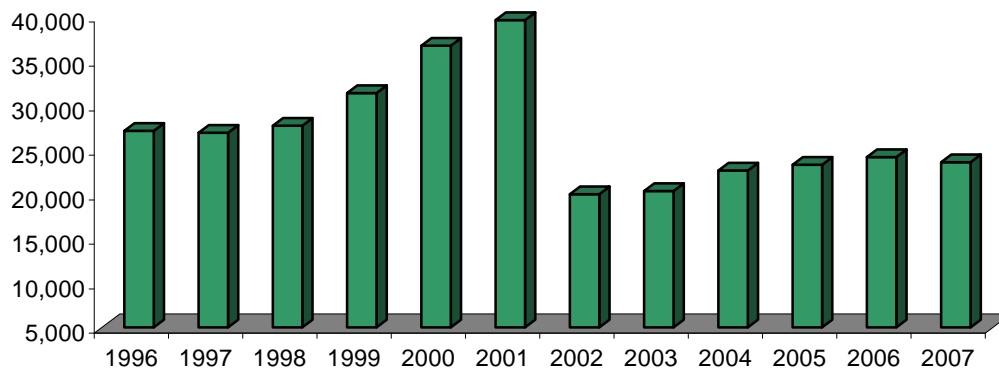


TABLE 71: Deep-Sea Merchant Ships Calling at Gibraltar, 1977 - 2007

<u>YEAR</u>	<u>NUMBER</u>	<u>REGISTERED TONNAGE</u>
1977	1,856	19,948,402
1978	1,692	17,704,149
1979	1,766	22,653,366
1980	1,568	18,863,469
1981	1,533	17,347,034
1982	1,402	14,820,098
1983	1,254	20,963,577
1984	1,118	18,734,654
1985	1,375	25,401,094
1986	1,980	32,831,134
1987	2,499	35,490,934
1988	2,109	43,462,851
1989	1,932	35,790,002
1990	2,521	57,593,017
1991	2,843	60,875,947
1992	2,888	62,890,747
1993	2,798	64,142,042
1994	2,425	52,840,177
1995	2,566	57,305,982
1996	3,411	78,162,851
1997	3,378	83,269,956
1998	4,023	96,603,833
1999	4,435	109,937,710
2000	4,489	106,955,034
2001	4,510	118,416,175
2002	5,162	127,977,906
2003	5,758	146,101,022
2004	6,076	136,854,466
2005	6,662	160,521,661
2006	6,629	167,781,479
2007	6,889	191,269,948

Notes : (i) Vessels serviced off limits are not included.

(ii) Figures from 1983 onwards are recorded as Gross Registered Tonnage. Figures for previous years were recorded as Net Registered Tonnage and cannot be converted for comparative purposes.

TABLE 72: Main Purpose of Call of Deep-Sea Merchant Ships Arriving at Gibraltar, 1977 - 2007

MAIN PURPOSE OF CALL	<u>CRUISE</u>	<u>CARGO</u>	<u>BUNKERS</u>	<u>SUPPLY</u>	<u>REPAIRS</u>	<u>OTHER</u>	<u>TOTAL</u>
1977	65	274	395	-	139	983	1,856
1978	52	236	386	-	144	874	1,692
1979	81	234	413	-	134	904	1,766
1980	87	225	364	-	108	784	1,568
1981	65	195	414	-	104	755	1,533
1982	102	174	390	-	64	672	1,402
1983	109	184	251	-	52	658	1,254
1984	111	152	254	-	54	547	1,118
1985	96	176	467	-	46	590	1,375
1986	79	251	705	-	85	860	1,980
1987	123	403	890	-	219	864	2,499
1988	102	304	1,019	-	135	549	2,109
1989	68	231	932	-	86	615	1,932
1990	76	209	1,289	-	108	839	2,521
1991	80	291	1,617	-	111	744	2,843
1992	110	321	1,818	-	78	561	2,888
1993	109	307	1,666	-	151	565	2,798
1994	117	276	1,426	-	97	509	2,425
1995	130	256	1,631	-	110	439	2,566
1996	139	222	2,510	-	92	448	3,411
1997	99	190	2,663	-	49	377	3,378
1998	135	156	3,275	-	66	391	4,023
1999	173	161	3,656	-	71	374	4,435
2000	175	208	3,694	-	80	322	4,489
2001	150	180	3,678	-	78	424	4,510
2002	149	155	4,387	-	91	380	5,162
2003	167	133	4,988	-	75	395	5,758
2004	171	45	5,419	30	144	267	6,076
2005	171	74	5,897	78	137	305	6,662
2006	201	109	5,787	71	182	279	6,629
2007	227	153	5,998	84	154	273	6,889

Notes : (i) 'Other' includes medical assistance, crew changes, obtaining charts, provisioning awaiting orders etc.

(ii) Vessels serviced "Off Limits" not included.

(iii) "Supply" figures prior to 2004 are included in "Bunkers" column.

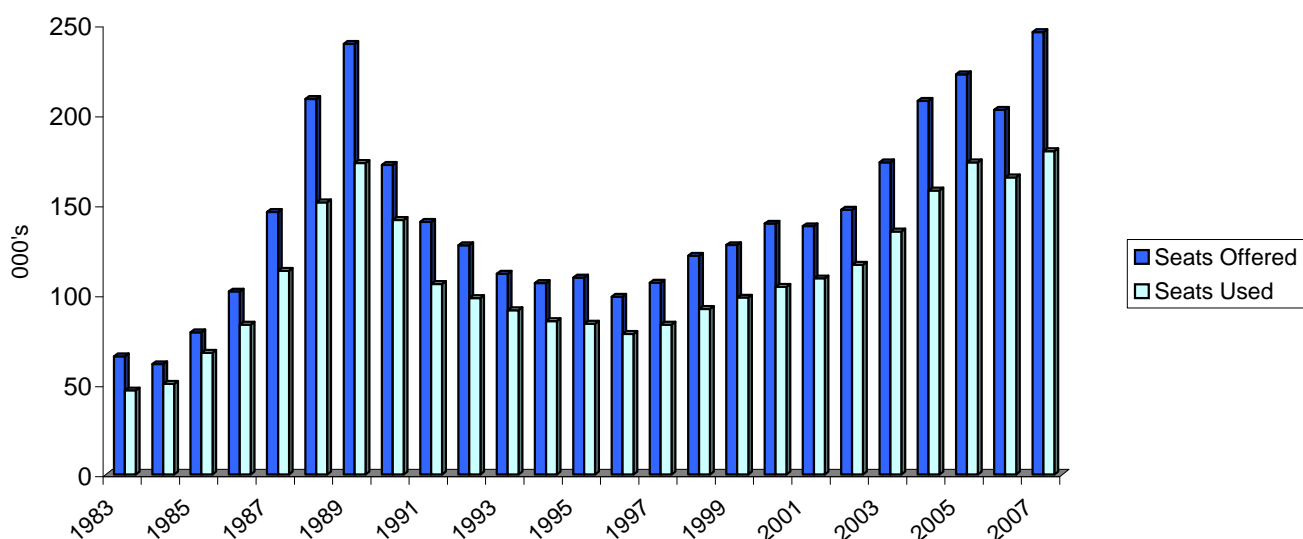
TABLE 73: Comparative Return of Total Shipping Arriving at Gibraltar, 2006 - 2007

<u>MONTH</u>	<u>2006</u>		<u>2007</u>	
	<u>NUMBER OF VESSELS</u>	<u>GROSS TONNAGE</u>	<u>NUMBER OF VESSELS</u>	<u>GROSS TONNAGE</u>
JANUARY	735	17,849,735	754	19,505,729
FEBRUARY	655	17,271,759	654	19,955,505
MARCH	732	18,238,948	717	21,345,914
APRIL	714	17,300,145	752	20,214,067
MAY	797	14,491,435	827	23,584,221
JUNE	723	19,295,169	832	22,430,694
JULY	762	19,014,348	746	20,947,309
AUGUST	736	20,022,754	828	24,034,202
SEPTEMBER	769	20,506,695	929	30,647,923
OCTOBER	815	20,820,873	965	32,508,784
NOVEMBER	813	20,318,014	875	25,354,312
DECEMBER	737	18,351,373	739	21,579,805
TOTAL	8,988	223,481,248	9,618	282,108,465

TABLE 74: Arrivals/Departures by Air from/to UK, 1983 - 2007

YEAR	ARRIVALS (000's)						DEPARTURES (000's)					
	TOTAL		SCHEDULED		CHARTER		TOTAL		SCHEDULED		CHARTER	
	Seats Offered	Seats Used	Seats Offered	Seats Used	Seats Offered	Seats Used	Seats Offered	Seats Used	Seats Offered	Seats Used	Seats Offered	Seats Used
1983	65.6	46.7	40.4	26.3	25.2	20.5	65.6	47.5	40.4	26.8	25.2	20.7
1984	61.3	50.3	34.6	27.4	26.7	22.9	61.2	51.0	34.6	27.6	26.7	23.4
1985	79.0	67.6	59.5	50.3	19.5	17.3	79.0	67.7	59.7	50.0	19.3	17.7
1986	101.7	83.2	96.9	79.1	4.8	4.1	101.8	84.1	96.9	80.1	4.9	4.0
1987	145.9	113.2	129.8	98.1	16.1	15.1	145.4	114.8	129.3	100.9	16.1	13.9
1988	208.7	151.2	196.0	139.6	12.7	11.6	208.3	156.1	195.6	144.6	12.7	11.5
1989	239.4	173.2	231.6	167.6	7.8	5.6	237.8	179.8	230.0	174.0	7.8	5.8
1990	172.0	141.5	165.8	136.8	6.2	4.7	175.1	148.5	168.9	143.8	6.2	4.7
1991	138.1	104.0	126.0	94.9	12.1	9.1	140.2	106.3	127.8	96.6	12.4	9.7
1992	127.4	98.1	127.0	97.7	0.4	0.4	128.2	101.0	127.7	100.5	0.5	0.4
1993	111.5	91.3	111.4	91.2	0.1	0.1	112.2	93.3	112.2	93.3	0.0	0.0
1994	106.4	85.2	106.4	85.2	0.0	0.0	107.1	86.9	207.2	86.9	0.0	0.0
1995	109.4	83.8	109.4	83.8	0.0	0.0	109.5	85.3	109.5	85.3	0.0	0.0
1996	98.7	78.1	98.7	78.1	0.0	0.0	98.1	78.2	98.1	78.2	0.0	0.0
1997	106.6	83.2	106.6	83.2	0.0	0.0	104.4	81.5	104.4	81.5	0.0	0.0
1998	121.5	92.0	120.4	91.0	1.2	1.1	120.2	91.0	119.0	90.1	1.2	0.9
1999	127.5	98.3	126.5	97.8	1.0	0.5	127.5	97.9	126.5	97.4	1.0	0.5
2000	139.4	104.3	138.6	103.7	0.8	0.5	138.9	107.1	138.1	106.6	0.8	0.5
2001	138.0	109.0	137.7	108.8	0.3	0.2	138.2	110.6	137.9	110.5	0.4	0.2
2002	147.2	116.6	146.3	115.7	0.9	0.9	147.0	114.8	146.1	114.0	0.9	0.9
2003	173.5	135.0	170.3	133.0	3.3	2.0	173.1	134.8	169.8	132.9	3.3	1.9
2004	207.6	157.9	206.4	157.0	1.2	0.9	207.6	158.3	206.4	157.3	1.2	0.9
2005	222.4	173.5	221.6	172.7	0.8	0.8	222.2	174.4	221.4	173.7	0.8	0.7
2006	202.7	165.2	202.0	164.6	0.7	0.6	202.6	166.0	201.9	165.4	0.7	0.6
2007	245.9	179.7	244.1	179.3	1.8	0.5	246.2	181.6	244.3	180.6	1.8	1.0

ARRIVALS BY AIR FROM UK, 1983 - 2007



- Notes:**
- (i) Charter flights as from 1998 include all destinations.
 - (ii) Flights to and from Madrid commenced on 16th December 2006.
 - (iii) The yearly totals have been rounded off from the actual figure and need not necessarily equal the sum of the rounded-off sub-totals.

TABLE 75: Commercial Freight, Set Down/Picked Up, Gibraltar, 1980 - 2007

(000's kgs)

<u>YEAR</u>	<u>SET DOWN</u>	<u>PICKED UP</u>
1980	447	38
1981	318	64
1982	481	44
1983	381	38
1984	333	36
1985	419	40
1986	523	59
1987	499	67
1988	599	40
1989	648	45
1990	797	95
1991	596	54
1992	476	64
1993	597	74
1994	518	49
1995	504	52
1996	406	58
1997	330	57
1998	406	69
1999	433	77
2000	419	74
2001	306	71
2002	289	60
2003	325	66
2004	320	61
2005	324	57
2006	296	52
2007	333	63

Note : *Relates to freight from/to all destinations.*

TELECOMMUNICATIONS

TABLE 76: Number of Exchange Lines, 1975 - 2007

<u>YEAR</u>	<u>TOTAL NUMBER OF EXCHANGE LINES</u>
1975	5,277
1976	5,560
1977	5,570
1978	6,065
1979	6,280
1980	6,585
1981	6,925
1982	7,117
1983	7,385
1984	7,364
1985	7,813
1986	8,119
1987	8,631
1988	9,181
1989	9,713
1990	10,690
1991	11,541
1992	12,831
1993	13,658
1994	15,153
1995	16,517
1996	17,500
1997	18,632
1998	20,380
1999	21,916
2000	23,541
2001	24,512
2002	24,070
2003	25,767
2004	25,354
2005	24,094
2006	24,116
2007	24,035

TABLE 77: Number of Telephone Calls, 2001 - 2007

	<u>2001</u>	<u>2002</u>	<u>2003</u>	<u>2004</u>	<u>2005</u>	<u>2006</u>	<u>2007</u>
National Traffic Calls (million)	37.8	37.9	35	38	36.4	27.5	25.5
International Calls (million)	6.7	6.4	6.7	7	6.9	5.6	5.2
Operator Assisted Calls	20,953	16,895	15,813	102	0	0	0

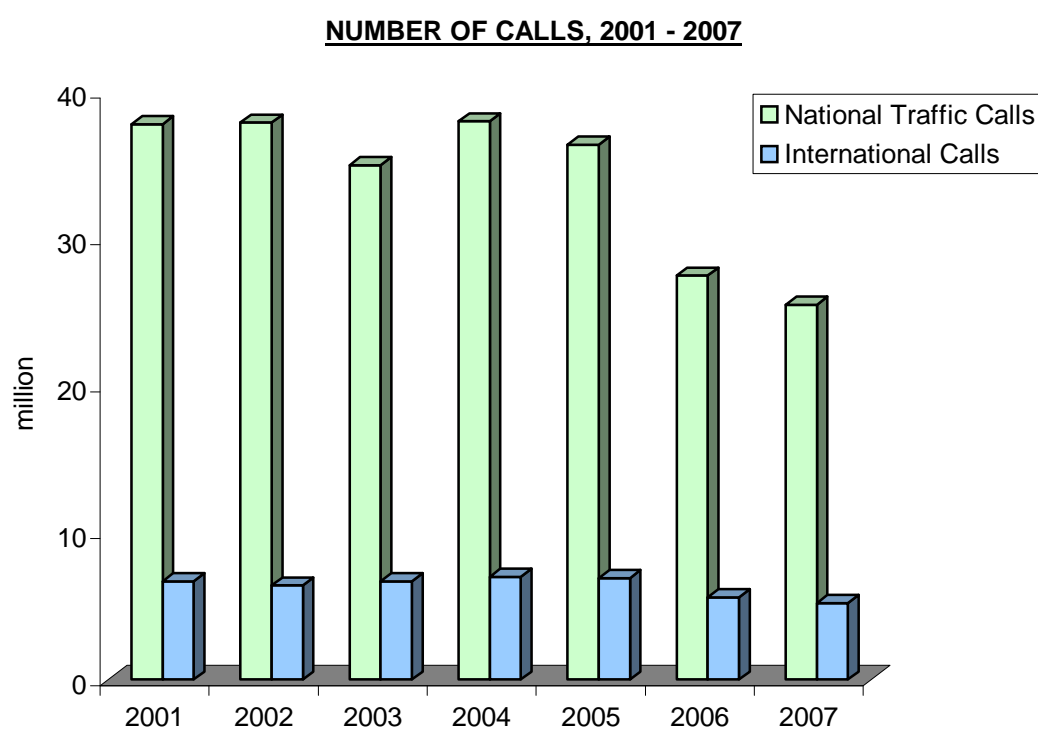
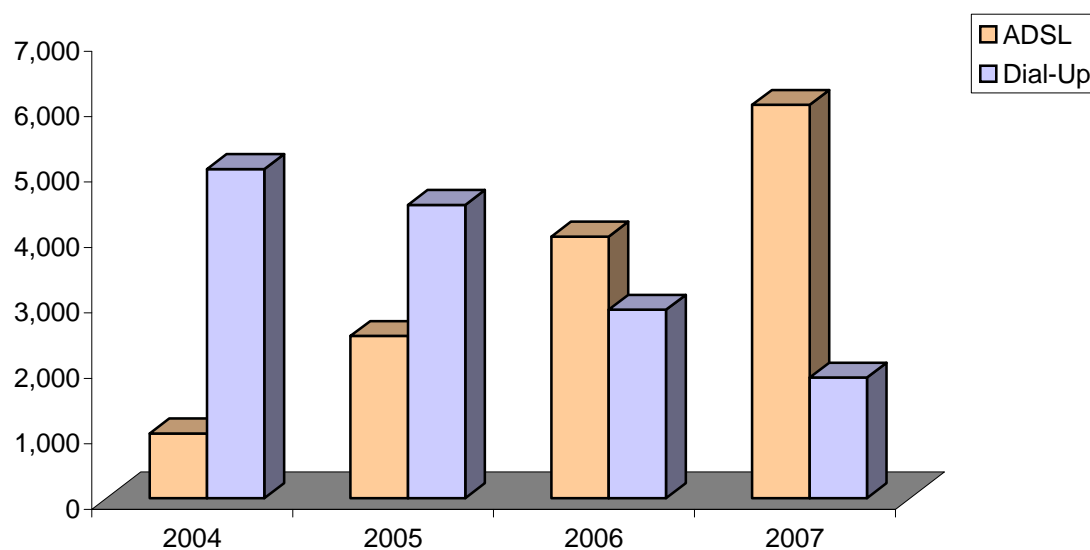


TABLE 78: Number of Internet Connections, 2004 - 2007

<u>YEAR</u> <u>(as at 31st March)</u>	<u>ADSL</u>	<u>DIAL-UP</u>	<u>TOTAL</u>
2004	989	5,028	6,017
2005	2,477	4,481	6,958
2006	3,996	2,878	6,874
2007	6,010	1,843	7,853

NUMBER OF INTERNET CONNECTIONS, 2004 - 2007



PUBLIC UTILITIES

WATER

TABLE 79: Supply and Billings of Potable Water, 1975 - 2007

Cubic Metres (000's)

<u>YEAR</u>	<u>SUPPLY</u>	<u>BILLINGS</u>
1975	696	436
1976	605	446
1977	623	423
1978	618	418
1979	650	582
1980	682	550
1981	686	609
1982	691	527
1983	650	541
1984	623	509
1985	655	555
1986	691	582
1987	746	673
1988	841	727
1989	905	777
1990	932	796
1991	1,009	836
1992	1,049	903
1993	1,042	886
1994	1,021	921
1995	1,065	913
1996	1,057	864
1997	1,095	968
1998	1,109	980
1999	1,134	993
2000	1,148	1,005
2001	1,174	1,047
2002	1,135	1,051
2003	1,189	1,065
2004	1,223	1,126
2005	1,214	1,099
2006	1,241	1,116
2007	1,294	1,168

ELECTRICITY

TABLE 80: Capacity, Generation and Billings of Electricity, 1975 - 2007

<u>YEAR</u>	<u>CAPACITY (i)</u> (MW)	<u>GENERATION</u> (KWH) (M)	<u>BILLINGS</u> (KWH) (M)
1975	18.8	50.2	45.6
1976	18.4	52.4	47.6
1977	18.4	51.2	46.5
1978	18.3	51.2	49.7
1979	18.0	53.7	50.2
1980	19.4	54.1	51.3
1981	19.3	56.3	51.6
1982	25.7	58.9	55.3
1983	23.1	61.1	55.1
1984	20.9	61.3	54.2
1985	20.9	62.7	55.5
1986	20.9	64.8	58.1
1987	20.9	69.9	61.7
1988	27.1	74.0	67.6
1989	27.1	81.3	70.1
1990	27.1	79.4	78.2
1991	27.1	91.6	81.0
1992	27.0	99.0	83.7
1993	32.7	102.7	85.2
1994	32.7	106.2	88.7
1995	37.7	108.2	93.6
1996	37.7	110.4	93.2
1997	37.7	111.2	95.5
1998	37.7	115.7	98.3
1999	37.7	120.1	103.9
2000	37.7	125.4	104.5
2001	37.7	126.2	113.2
2002	37.7	128.7	117.6
2003	37.7	134.3	124.0
2004	37.7	135.6	129.3
2005	37.7	145.4	139.8
2006	42.8	151.2	144.4
2007	42.8	154.6	146.9

Notes : (i) Refers to actual continuous maximum rating of the generators.

(ii) The difference between "Generation" and "Billing" is attributed to electricity consumed by the power stations, distribution transformers and cables and public lighting.

(iii) MW - Megawatts, KWH - Kilowatt Hours, M - Millions

(iv) The capacity figures in respect of the years 1995 to 2001 have been revised.

METEOROLOGICAL DATA

TABLE 81: Monthly Rainfall (Millimetres), 2002 - 2007

<u>MONTH</u>	<u>2002</u>	<u>2003</u>	<u>2004</u>	<u>2005</u>	<u>2006</u>	<u>2007</u>
JANUARY	24.2	98.0	31.8	0.8	166.4	137.4
FEBRUARY	112.3	137.0	100.6	269.0	75.2	100.8
MARCH	94.4	148.0	56.6	96.8	104.4	23.4
APRIL	67.3	81.8	88.1	3.8	54.4	83.4
MAY	22.0	0.2	87.6	4.4	0.6	43.0
JUNE	12.8	-	-	Tr.	2.8	1.6
JULY	-	Tr.	Tr.	-	2.2	Tr.
AUGUST	-	Tr.	Tr.	0.6	6.2	0.4
SEPTEMBER	22.0	32.6	0.6	4.6	6.4	89.8
OCTOBER	204.0	197.3	37.2	95.4	133.6	37.2
NOVEMBER	259.5	75.2	50.0	72.2	100.6	66.6
DECEMBER	133.0	191.6	95.8	101.4	50.4	176.6
YEARLY TOTAL	951.5	961.7	548.3	649.0	703.2	760.2

TOTAL YEARLY RAINFALL, 2002 - 2007

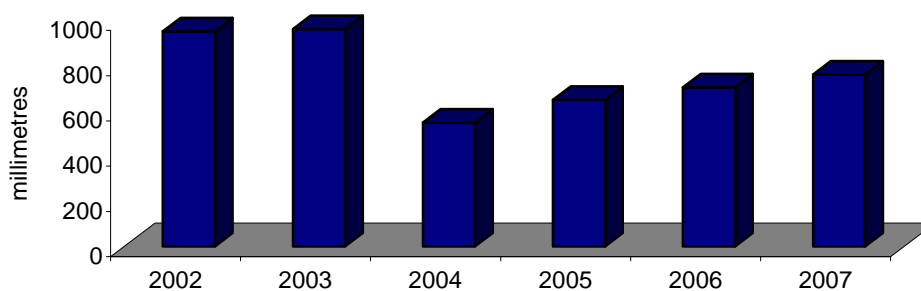


TABLE 82: Daily Mean Temperature °C., 2002 - 2007

<u>MONTH</u>	<u>2002</u>	<u>2003</u>	<u>2004</u>	<u>2005</u>	<u>2006</u>	<u>2007</u>
JANUARY	13.5	13.1	14.6	12.8	12.5	13.0
FEBRUARY	13.9	13.3	14.2	12.5	13.0	15.2
MARCH	14.9	15.6	15.1	14.7	15.3	15.4
APRIL	16.3	16.7	15.5	17.3	17.7	16.0
MAY	18.5	19.6	18.0	20.3	19.4	19.4
JUNE	21.2	23.1	21.7	22.0	22.2	20.2
JULY	23.7	24.5	24.4	24.9	24.7	24.3
AUGUST	24.3	25.2	24.5	23.7	24.3	24.3
SEPTEMBER	22.6	23.0	22.8	21.6	23.2	22.7
OCTOBER	19.5	19.6	19.8	19.9	20.5	20.8
NOVEMBER	16.5	15.9	15.8	15.4	17.9	17.1
DECEMBER	14.5	14.1	13.7	14.3	14.1	15.0
YEARLY AVERAGE	18.3	18.6	18.3	18.3	18.7	18.6

DAILY MEAN TEMPERATURE, 2002 - 2007

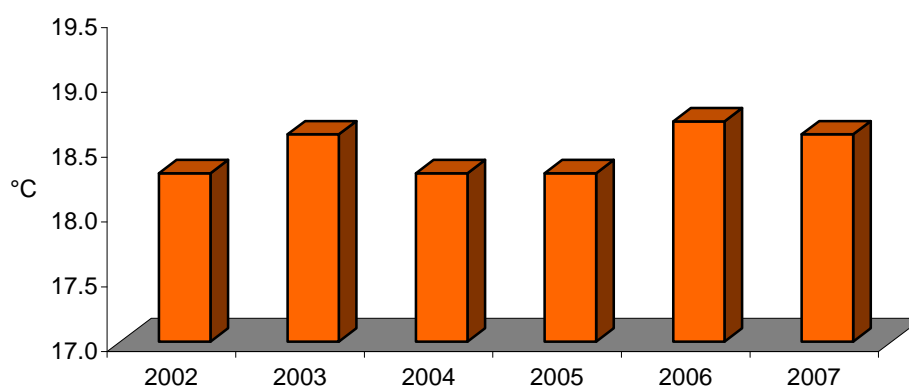


TABLE 83: Daily Mean Hours of Sunshine, 2002 - 2007

<u>MONTH</u>	<u>2002</u>	<u>2003</u>	<u>2004</u>	<u>2005</u>	<u>2006</u>	<u>2007</u>
JANUARY	4.3	6.3	7.2	5.4	5.0	5.6
FEBRUARY	6.7	5.9	3.8	7.1	5.9	5.0
MARCH	5.9	3.9	6.2	4.7	7.2	8.0
APRIL	8.6	7.9	9.2	8.9	7.9	7.0
MAY	9.8	10.3	8.3	9.8	7.5	10.8
JUNE	10.9	10.8	11.1	10.7	10.3	11.8
JULY	11.6	10.8	10.5	11.3	10.4	11.5
AUGUST	10.9	10.3	9.2	9.7	10.7	9.3
SEPTEMBER	8.3	8.9	8.7	8.8	8.8	7.4
OCTOBER	6.3	4.2	6.5	6.1	5.1	6.8
NOVEMBER	5.3	5.3	4.2	5.8	4.2	5.1
DECEMBER	5.4	4.8	4.4	3.6	4.1	5.3
YEARLY AVERAGE	7.8	7.4	7.4	7.7	7.3	7.8

DAILY MEAN HOURS OF SUNSHINE, 2002 - 2007

