



H.M. GOVERNMENT OF GIBRALTAR

HOTEL OCCUPANCY SURVEY 2013



STATISTICS OFFICE



H.M. GOVERNMENT OF GIBRALTAR

HOTEL OCCUPANCY SURVEY 2013

STATISTICS OFFICE

H.M. Government of Gibraltar
Statistics Office

Statistics Online

Copies of the Hotel Occupancy Survey can be obtained, free of charge from the Statistics Office and are also available for download from the Gibraltar Government Website (<http://www.gibraltar.gov.gi/statistics/downloads>).

Historical data can be downloaded from previous copies of the report available online.

Comments and requests for general information should be addressed to:

Statistics Office
99 Harbours Walk
The New Harbours
Gibraltar

Or

E-mail: statistics@gibraltar.gov.gi

Tel: +350 20075515/ +350 20075490

Fax: +350 20051160

PREFACE

The Statistics (Hotel Occupancy Survey) Order 1971 requires that the Government Statistician prepare a report and summary of the findings of the Hotel Occupancy Survey to be laid before the Gibraltar Parliament.

This report contains a summary of the statistics collected for the years 1987 – 2013.

I must express my thanks to the establishments for their continued co-operation in the conduct of this Survey.

GOVERNMENT STATISTICIAN

DEFINITIONS AND NOTES

- (a) **Tourist:** A tourist is a person who is primarily in Gibraltar for the purpose of a holiday. It is nevertheless up to the discretion of the individual hotels who to include under this category.
- (b) **Guest Nights:** Calculated on the basis of "one guest x one night".
- (c) **Room Nights:** Calculated on the basis of "one room x one night".
- (d) **Sleeper Occupancy:** Calculated as the percentage of guest nights sold over guest nights offered. It should be noted that this measure does not necessarily give an accurate indication of the ability of the hotel to accept more guests, (e.g. one person staying in a room with two beds gives a 50% sleeper occupancy and a 100% room occupancy).
- (e) **Room Occupancy:** Calculated as the percentage of room nights sold over room nights offered.
- (f) **Abbreviations:**
 - GNS - Guest Nights Sold.
 - GNO - Guest Nights Offered.
 - RNS - Room Nights Sold.
 - RNO - Room Nights Offered.
- (g) In interpreting the figures it should be noted that:
 - (i) As from September 1992, the Montarik Hotel is not included.
 - (ii) As from November 1992, the Gibraltar Beach Hotel is not included.
 - (iii) The Sunrise Motel is included for the period January 1992 to December 1994 and re-included as from January 2007.
 - (iv) The Cannon Hotel is included with effect from July 1995.
 - (v) The Emile Youth Hostel and Herald Travel Apartments are included with effect from January 2006.
 - (vi) The Continental Hotel is included for the period January 1986 to July 2008 and re-included from December 2013.
 - (vii) The Governor's Inn Apartments are included for the period January 2006 to December 2010.
 - (viii) As from October 2013, the Sunrise Motel is not included.
- (h) This Survey is based on the figures provided by the Caleta Hotel, O'Callaghan Elliott Hotel, Rock Hotel, Bristol Hotel, Queens Hotel, Cannon Hotel, Emile Youth Hostel, Herald Travel Apartments, Sunrise Motel and Continental Hotel.

Contents

Tables

Page(s)

1. General

1.01 General Analysis, 1987 - 2013	1 - 3
------------------------------------	-------

2. Room Nights Sold and Offered

2.01 Room Nights Sold (All Arrivals), 2007 - 2011	4
2.02 Room Nights Offered (All Arrivals), 2007 - 2011	4
2.03 Room Nights Sold and Offered (All Arrivals), 2012 - 2013	5
2.04 Room Nights Sold (Tourist Arrivals), 2007 - 2011	6
2.05 Room Nights Offered (Tourist Arrivals), 2007 - 2011	6
2.06 Room Nights Sold and Offered (Tourist Arrivals), 2012 - 2013	7

3. Room Occupancy Rates

3.01 Room Occupancy Rates (All Arrivals), 2003 - 2007	8
3.02 Room Occupancy Rates (Tourist Arrivals), 2003 - 2007	8
3.03 Room Occupancy Rates (All Arrivals), 2008 - 2013	9
3.04 Room Occupancy Rates (Tourist Arrivals), 2008 - 2013	10

4. Number of Arrivals

4.01 Number of Arrivals (All Arrivals), 1987 - 1993	11
4.02 Number of Arrivals (Tourist Arrivals), 1987 - 1993	11
4.03 Number of Arrivals (All Arrivals), 1994 - 2000	12
4.04 Number of Arrivals (Tourist Arrivals), 1994 - 2000	12
4.05 Number of Arrivals (All Arrivals), 2001 - 2007	13
4.06 Number of Arrivals (Tourist Arrivals), 2001 - 2007	13
4.07 Number of Arrivals (All Arrivals), 2008 - 2013	14
4.08 Number of Arrivals (Tourist Arrivals), 2008 - 2013	15

5. Guest Nights Sold/Offered, Sleeper Occupancy Rates, (All Arrivals)

5.01 Guest Nights Sold/Offered, Sleeper Occupancy Rates, 1987 - 1990	16
5.02 Guest Nights Sold/Offered, Sleeper Occupancy Rates, 1991 - 1994	16
5.03 Guest Nights Sold/Offered, Sleeper Occupancy Rates, 1995 - 1998	17
5.04 Guest Nights Sold/Offered, Sleeper Occupancy Rates, 1999 - 2002	17
5.05 Guest Nights Sold/Offered, Sleeper Occupancy Rates, 2003 - 2006	18
5.06 Guest Nights Sold/Offered, Sleeper Occupancy Rates, 2007 - 2010	18
5.07 Guest Nights Sold, 2011 - 2013	19
5.08 Guest Nights Offered, 2011 - 2013	20
5.09 Sleeper Occupancy Rates, 2011 - 2013	21

6. Guest Nights Sold/Offered, Sleeper Occupancy Rates, (Tourist Arrivals)

6.01 Guest Nights Sold/Offered, Sleeper Occupancy Rates, 1987 - 1990	22
6.02 Guest Nights Sold/Offered, Sleeper Occupancy Rates, 1991 - 1994	22
6.03 Guest Nights Sold/Offered, Sleeper Occupancy Rates, 1995 - 1998	23
6.04 Guest Nights Sold/Offered, Sleeper Occupancy Rates, 1999 - 2002	23
6.05 Guest Nights Sold/Offered, Sleeper Occupancy Rates, 2003 - 2006	24
6.06 Guest Nights Sold/Offered, Sleeper Occupancy Rates, 2007 - 2010	24
6.07 Guest Nights Sold, 2011 - 2013	25
6.08 Guest Nights Offered, 2011 - 2013	26
6.09 Sleeper Occupancy Rates, 2011 - 2013	27

7. Average Length of Stay (Nights)

7.01 Average Length of Stay Per Person (All Arrivals), 2002 - 2013	28
7.02 Average Length of Stay Per Person (Tourist Arrivals), 2002 - 2013	29

1: General

Table 1.1 General Analysis, 1987 - 2013

Year	All Arrivals	(000's)		Room Occupancy (%)	(000's)		Sleeper Occupancy (%)	Average Length Of Stay
		RNO	RNS		GNO	GNS		
1987	64,349	n/a	n/a	n/a	535	278	52.3	4.3
1988	64,942	n/a	n/a	61.3	551	286	52.0	4.4
1989	67,934	n/a	n/a	53.3	501	220	44.0	3.2
1990	64,793	n/a	n/a	51.3	481	197	40.8	3.0
1991	43,193	n/a	n/a	50.6	502	178	35.5	4.1
1992	40,986	237	98	41.2	497	157	31.6	3.8
1993	39,123	195	94	48.4	391	157	40.2	4.0
1994	37,851	199	89	44.5	401	149	37.2	3.9
1995	45,056	192	88	46.1	369	144	39.2	3.2
1996	46,142	191	83	43.3	372	141	37.8	3.1
1997	48,420	190	90	47.3	370	144	39.0	3.0
1998	41,616	173	93	53.6	335	145	43.1	3.5
1999	42,031	179	99	55.3	351	154	43.7	3.7
2000	48,949	179	105	58.9	368	164	44.6	3.4
2001	53,776	179	115	64.2	366	179	48.9	3.3
2002	59,417	183	118	64.4	367	182	49.7	3.1
2003	61,743	186	119	64.2	367	188	51.2	3.0
2004	61,710	186	126	68.2	366	202	55.1	3.3
2005	58,796	177	122	68.6	349	196	56.2	3.3
2006	59,194	200	119	59.2	406	192	47.3	3.2
2007	59,425	220	128	58.1	434	202	46.5	3.4
2008	58,500	218	134	61.3	425	210	49.5	3.6
2009	54,863	214	125	58.5	414	199	48.0	3.6
2010	51,384	214	112	52.2	413	178	43.0	3.5
2011	55,619	209	125	60.2	401	199	49.7	3.6
2012	52,340	198	118	59.3	384	185	48.1	3.5
2013	54,128	197	120	61.0	381	185	48.6	3.4

Notes:

(i) RNO - Room Nights Offered.

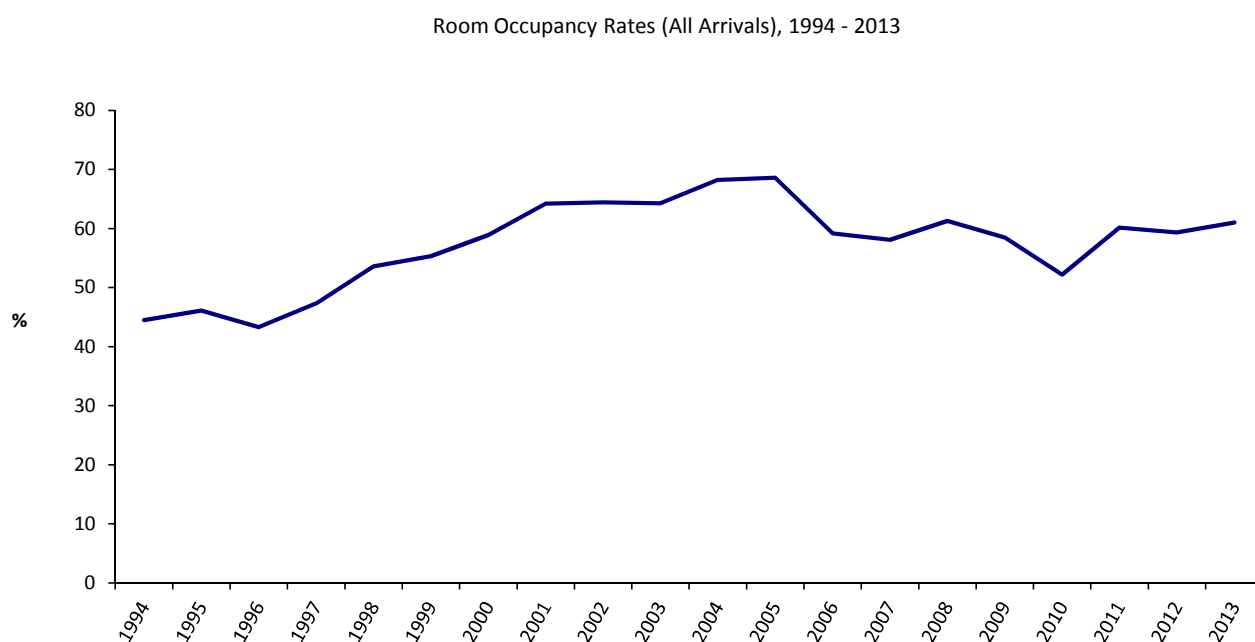
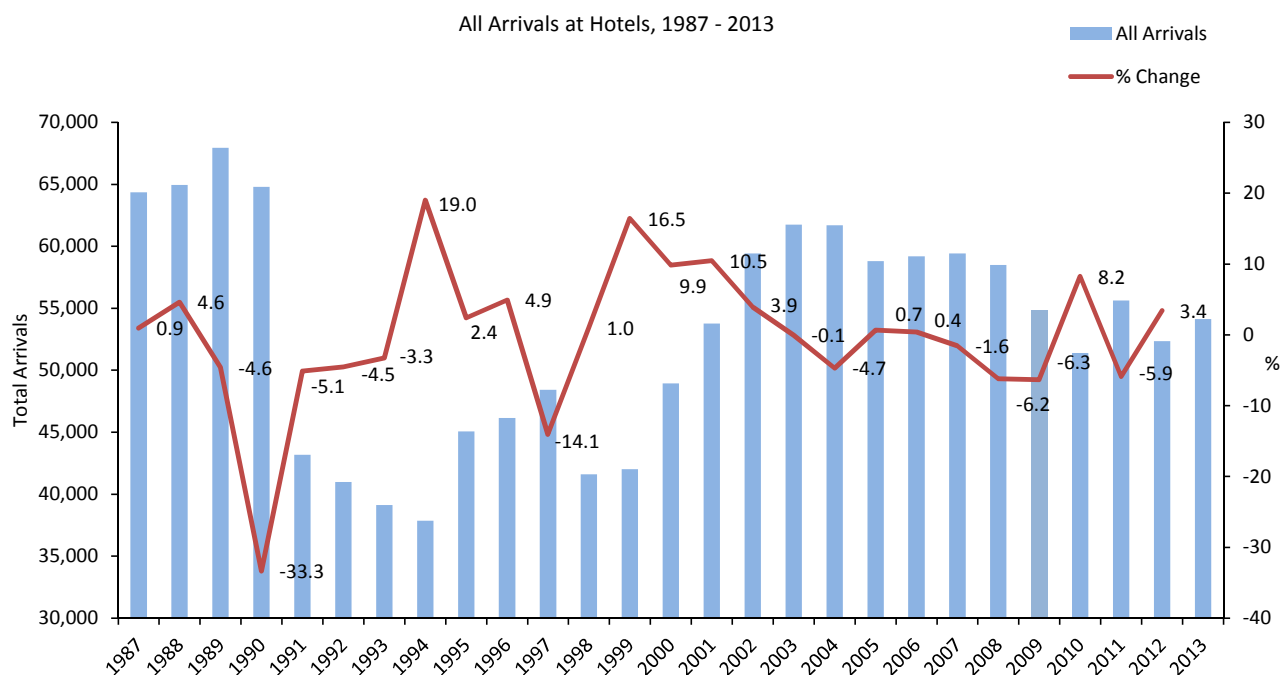
(ii) RNS - Room Nights Sold.

(iii) GNO - Guest Nights Offered.

(iv) GNS - Guest Nights Sold.

(v) With effect from January 1992, hotels were required under the legislation to submit returns which included the % room occupancy figures. For the period 1988 to 1991, these figures were provided voluntarily by the hotels.

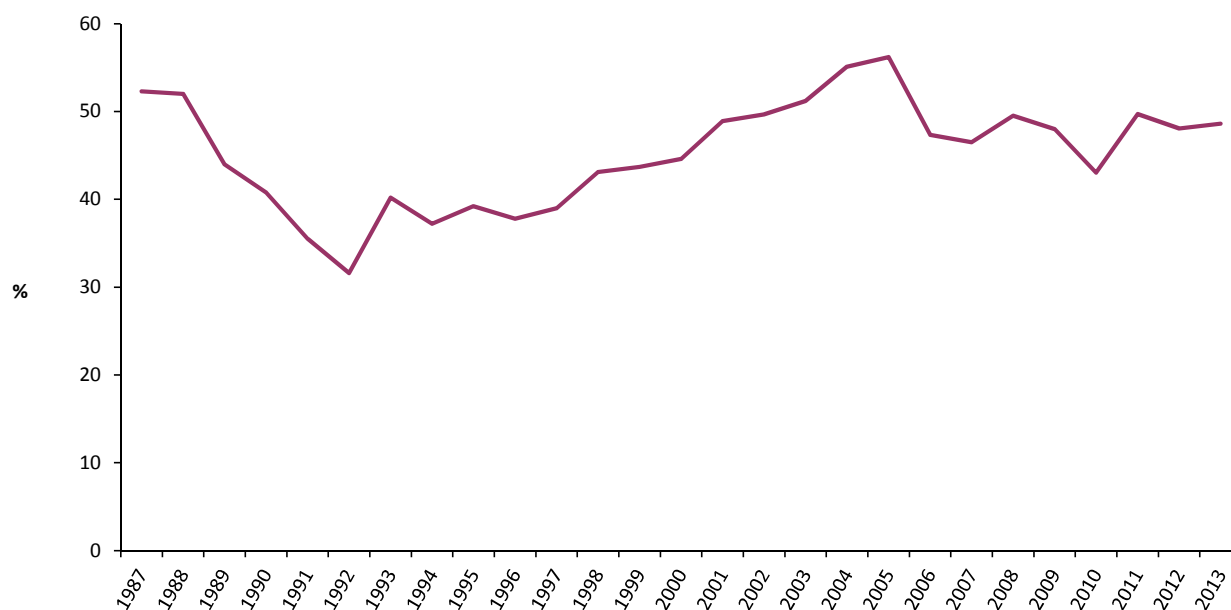
(vi) Hotel statistics have been revised from 2007 to 2012 to include the corrected data provided by a hotel and so differ from previously published figures.



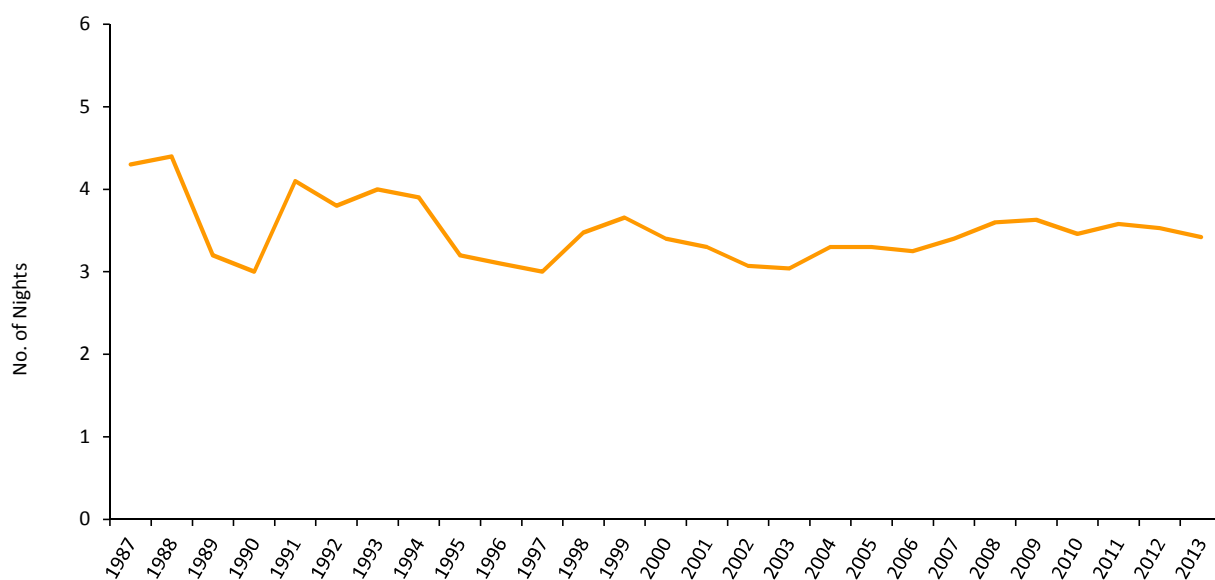
Note:

(i) Hotel statistics have been revised from 2007 to 2012 to include the corrected data provided by a hotel and so differ from previously published figures.

Sleeper Occupancy Rates (All Arrivals), 1987 - 2013



Average Length of Stay (All Arrivals), 1987 - 2013



Note:

(i) Hotel statistics have been revised from 2007 to 2012 to include the corrected data provided by a hotel and so differ from previously published figures.

2: Room Nights Sold and Offered

Table 2.01 Room Nights Sold (All Arrivals), 2007 - 2011

	Room nights sold (000's)				
	2007	2008	2009	2010	2011
January	8.2	9.8	8.1	6.8	8.6
February	9.3	9.3	10.1	8.1	9.0
March	9.7	9.4	11.5	8.4	10.3
April	10.8	11.4	11.0	8.3	9.9
May	11.3	11.7	11.4	10.1	10.9
June	11.3	12.0	11.7	10.1	11.4
July	10.9	12.3	10.9	10.5	11.4
August	12.3	14.2	11.1	10.6	11.8
September	13.2	13.2	11.7	12.0	13.0
October	13.2	13.1	11.4	10.4	12.0
November	10.2	9.9	8.5	9.0	9.9
December	7.5	7.7	7.5	7.2	7.2
Total	127.8	133.9	124.9	111.5	125.5

Table 2.02 Room Nights Offered (All Arrivals), 2007 - 2011

	Room nights offered (000's)				
	2007	2008	2009	2010	2011
January	18.9	18.6	17.9	18.0	17.6
February	17.1	17.5	16.3	16.2	15.9
March	18.9	18.7	18.2	18.0	17.6
April	18.1	18.1	17.6	17.5	17.0
May	18.5	18.7	18.2	18.2	18.0
June	17.8	18.2	17.6	17.6	17.4
July	18.4	18.7	18.1	18.1	17.9
August	18.4	18.3	18.2	18.1	17.6
September	18.1	17.8	17.5	17.7	17.6
October	18.8	18.3	18.3	18.3	17.5
November	18.3	17.6	17.6	17.7	17.1
December	18.6	17.8	18.1	18.2	17.5
Total	220.0	218.5	213.6	213.6	208.5

Notes:

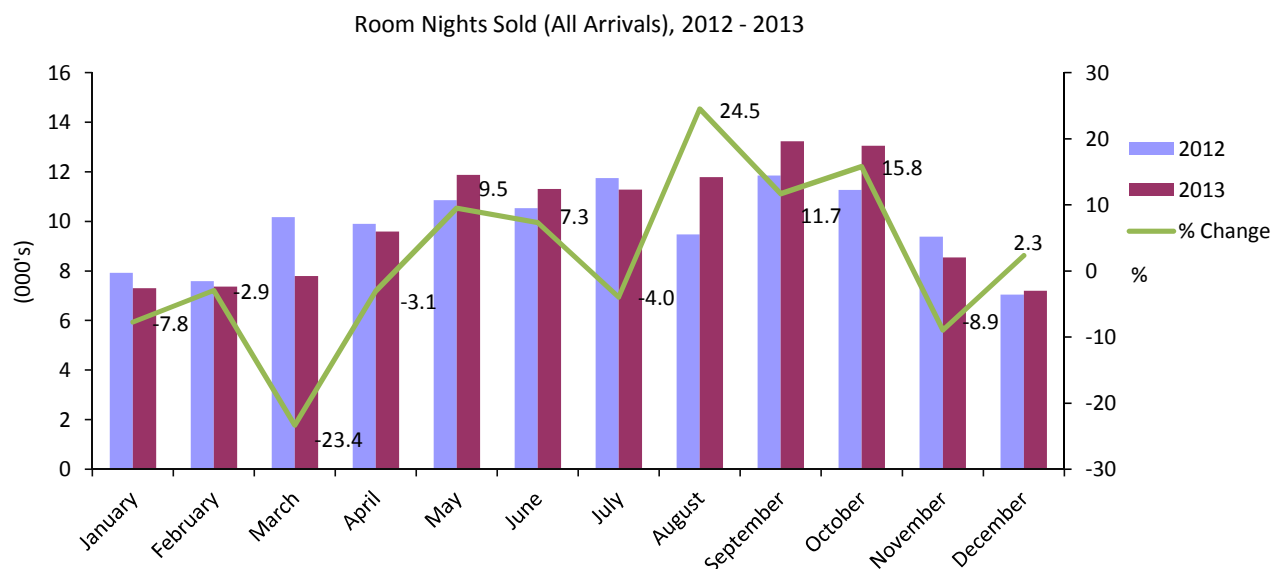
(i) Yearly totals have been rounded off and need not necessarily equal the sum of the rounded off monthly figures.

(ii) Hotel statistics have been revised from 2007 to 2012 to include the corrected data provided by a hotel and so differ from previously published figures.

2: Room Nights Sold and Offered

Table 2.03 Room Nights Sold and Offered (All Arrivals), 2012 - 2013

	Room nights sold (000's)		Room nights offered (000's)	
	2012	2013	2012	2013
January	7.9	7.3	17.2	17.0
February	7.6	7.4	16.0	15.2
March	10.2	7.8	16.7	16.9
April	9.9	9.6	16.0	16.4
May	10.9	11.9	16.6	17.1
June	10.5	11.3	16.1	16.5
July	11.8	11.3	16.6	17.2
August	9.5	11.8	16.6	17.2
September	11.8	13.2	16.0	16.7
October	11.3	13.1	17.1	16.2
November	9.4	8.6	16.4	14.8
December	7.0	7.2	17.1	15.9
Total	117.7	120.4	198.5	197.3

**Notes:**

(i) Yearly totals have been rounded off and need not necessarily equal the sum of the rounded off monthly figures.

(ii) Hotel statistics have been revised from 2007 to 2012 to include the corrected data provided by a hotel and so differ from previously published figures.

2: Room Nights Sold and Offered

Table 2.04 Room Nights Sold (Tourist Arrivals), 2007 - 2011

	Room nights sold (000's)				
	2007	2008	2009	2010	2011
January	4.5	3.7	3.8	2.9	4.2
February	4.2	3.1	4.6	4.1	4.3
March	5.8	3.8	6.2	4.7	5.9
April	6.2	5.3	6.3	4.5	6.0
May	6.0	5.6	6.1	5.8	6.4
June	6.2	6.0	6.2	6.0	6.4
July	5.5	5.4	6.1	6.1	6.7
August	6.7	6.9	6.0	6.3	7.2
September	7.3	6.8	7.0	7.1	8.3
October	7.0	6.4	6.3	6.1	7.5
November	4.7	4.6	3.6	5.0	5.6
December	3.4	3.7	3.6	3.7	4.2
Total	67.6	61.3	65.8	62.0	72.6

Table 2.05 Room Nights Offered (Tourist Arrivals), 2007 - 2011

	Room nights offered (000's)				
	2007	2008	2009	2010	2011
January	18.9	18.6	17.9	18.0	17.6
February	17.1	17.5	16.3	16.2	15.9
March	18.9	18.7	18.2	18.0	17.6
April	18.1	18.1	17.6	17.5	17.0
May	18.5	18.7	18.2	18.2	18.0
June	17.8	18.2	17.6	17.6	17.4
July	18.4	18.7	18.1	18.1	17.9
August	18.4	18.3	18.2	18.1	17.6
September	18.1	17.8	17.5	17.7	17.6
October	18.8	18.3	18.3	18.3	17.5
November	18.3	17.6	17.6	17.7	17.1
December	18.6	17.8	18.1	18.2	17.5
Total	220.0	218.5	213.6	213.6	208.5

Notes:

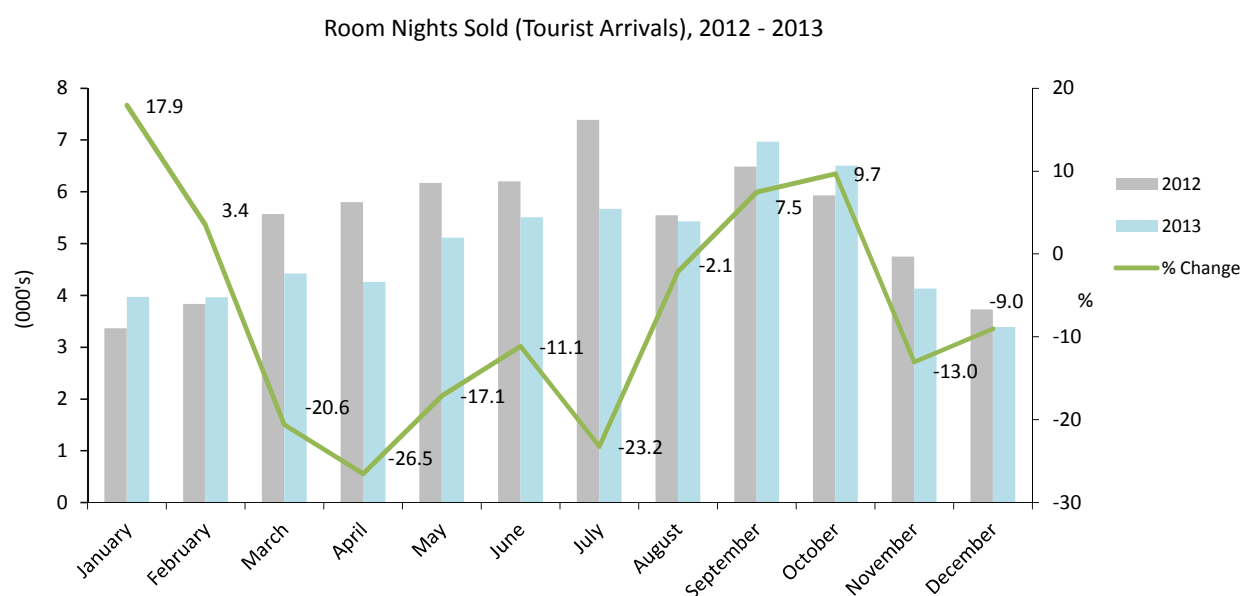
(i) Yearly totals have been rounded off and need not necessarily equal the sum of the rounded off monthly figures.

(ii) Hotel statistics have been revised from 2007 to 2012 to include the corrected data provided by a hotel and so differ from previously published figures.

2: Room Nights Sold and Offered

Table 2.06 Room Nights Sold and Offered (Tourist Arrivals), 2012 - 2013

	Room nights sold (000's)		Room nights offered (000's)	
	2012	2013	2012	2013
January	3.4	4.0	17.2	17.0
February	3.8	4.0	16.0	15.2
March	5.6	4.4	16.7	16.9
April	5.8	4.3	16.0	16.4
May	6.2	5.1	16.6	17.1
June	6.2	5.5	16.1	16.5
July	7.4	5.7	16.6	17.2
August	5.6	5.4	16.6	17.2
September	6.5	7.0	16.0	16.7
October	5.9	6.5	17.1	16.2
November	4.8	4.1	16.4	14.8
December	3.7	3.4	17.1	15.9
Total	64.8	59.4	198.5	197.3

**Notes:**

(i) Yearly totals have been rounded off and need not necessarily equal the sum of the rounded off monthly figures.

(ii) Hotel statistics have been revised from 2007 to 2012 to include the corrected data provided by a hotel and so differ from previously published figures.

3: Room Occupancy Rates

Table 3.01 Room Occupancy Rates (All Arrivals), 2003 - 2007

	Room occupancy rates (%)				
	2003	2004	2005	2006	2007
January	46.7	48.9	54.3	45.1	43.3
February	58.7	58.6	79.2	53.0	54.4
March	66.8	71.3	66.2	65.1	51.3
April	66.4	61.3	73.2	60.3	59.4
May	68.4	69.8	73.6	62.6	61.0
June	76.6	75.9	75.3	68.6	63.1
July	66.3	73.0	68.3	64.0	59.1
August	63.9	75.0	70.0	56.7	67.0
September	79.1	87.4	80.0	70.8	73.0
October	71.1	73.9	82.2	66.7	70.4
November	64.1	69.2	62.0	54.0	55.9
December	43.1	52.2	43.7	42.9	40.3
Total	64.2	68.2	68.6	59.2	58.1

Table 3.02 Room Occupancy Rates (Tourist Arrivals), 2003 - 2007

	Room occupancy rates (%)				
	2003	2004	2005	2006	2007
January	27.2	28.6	32.5	24.7	23.9
February	31.3	36.5	49.5	29.9	24.8
March	40.9	43.8	42.2	35.8	30.8
April	37.9	39.8	48.9	36.9	34.0
May	40.5	46.1	50.7	41.7	32.2
June	45.5	45.5	54.6	47.8	34.9
July	40.9	46.9	42.5	39.4	30.2
August	42.5	48.8	46.1	40.5	36.6
September	53.6	59.8	53.0	50.3	40.3
October	47.1	50.6	55.0	48.8	37.3
November	40.3	44.2	36.5	36.8	25.6
December	25.1	33.2	24.8	24.9	18.1
Total	39.4	43.7	44.4	38.2	30.7

Notes:

(i) Yearly totals have been rounded off and need not necessarily equal the sum of the rounded off monthly figures.

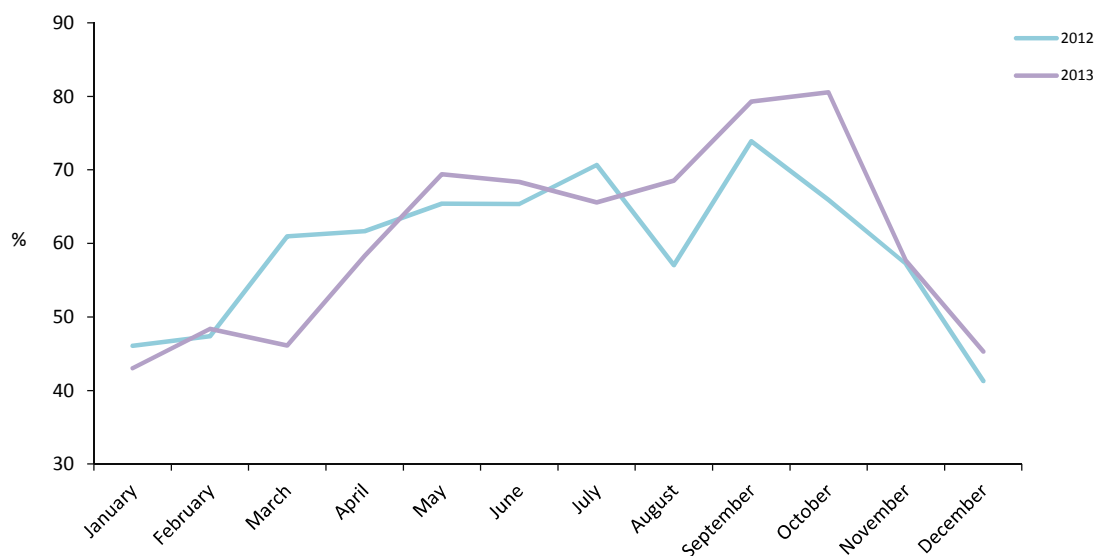
(ii) Hotel statistics have been revised from 2007 to 2012 to include the corrected data provided by a hotel and so differ from previously published figures.

3: Room Occupancy Rates

Table 3.03 Room Occupancy Rates (All Arrivals), 2008 - 2013

	Room occupancy rates (%)					
	2008	2009	2010	2011	2012	2013
January	52.6	45.5	37.9	48.9	46.1	43.0
February	53.1	62.0	49.8	56.9	47.4	48.4
March	50.0	63.0	46.4	58.3	61.0	46.1
April	62.8	62.4	47.2	58.4	61.7	58.3
May	62.5	62.7	55.8	60.7	65.4	69.4
June	65.8	66.5	57.8	65.6	65.4	68.4
July	65.6	59.9	57.8	63.8	70.7	65.6
August	77.6	61.2	58.7	67.1	57.0	68.6
September	74.5	66.8	67.7	74.0	73.9	79.3
October	71.7	62.6	57.0	68.6	66.0	80.6
November	56.0	48.4	50.9	57.8	57.2	57.7
December	43.2	41.4	39.4	41.3	41.3	45.3
Total	61.3	58.5	52.2	60.2	59.3	61.0

Room Occupancy Rates (All Arrivals), 2012 - 2013



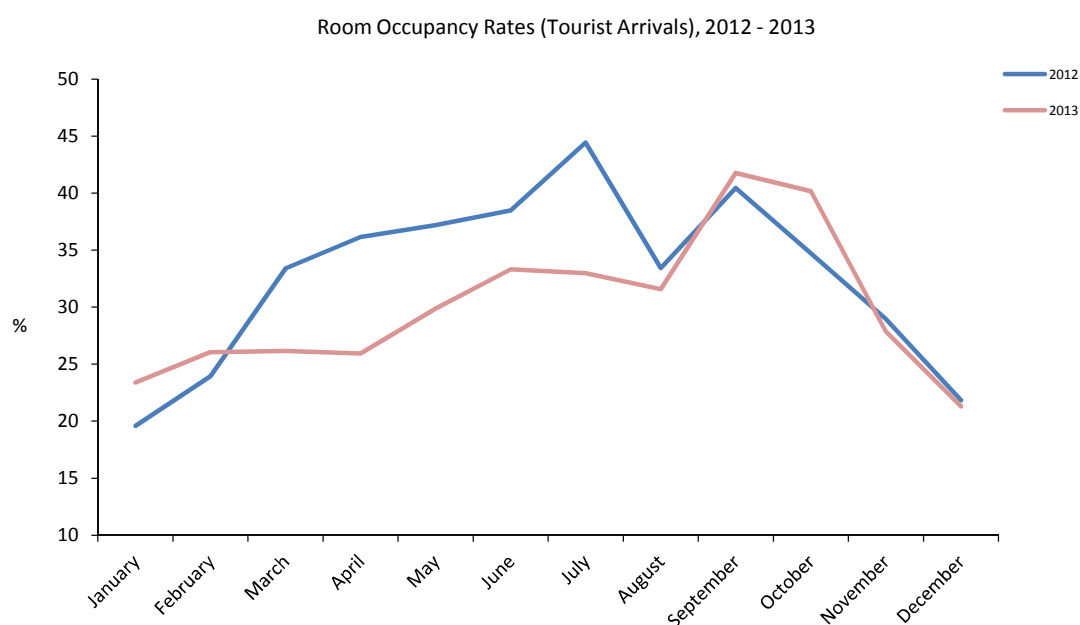
Notes:

- (i) Yearly totals have been rounded off and need not necessarily equal the sum of the rounded off monthly figures.
(ii) Hotel statistics have been revised from 2007 to 2012 to include the corrected data provided by a hotel and so differ from previously published figures.

3: Room Occupancy Rates

Table 3.04 Room Occupancy Rates (Tourist Arrivals), 2008 - 2013

	Room occupancy rates (%)					
	2008	2009	2010	2011	2012	2013
January	19.6	21.2	15.9	23.7	19.6	23.4
February	17.7	28.5	25.4	27.2	23.9	26.1
March	20.5	33.8	26.0	33.4	33.4	26.2
April	29.4	35.7	25.6	35.4	36.2	25.9
May	29.9	33.7	31.9	35.4	37.2	29.9
June	33.1	35.4	33.9	36.8	38.5	33.3
July	28.7	33.6	33.5	37.3	44.4	33.0
August	37.8	32.8	34.7	40.7	33.4	31.6
September	38.5	39.9	39.8	47.3	40.5	41.8
October	35.0	34.6	33.2	43.1	34.7	40.2
November	26.0	20.6	28.0	32.6	29.0	27.9
December	20.6	19.7	20.4	23.9	21.9	21.3
Total	28.1	30.8	29.0	34.8	32.7	30.1

**Notes:**

- (i) Yearly totals have been rounded off and need not necessarily equal the sum of the rounded off monthly figures.
- (ii) Hotel statistics have been revised from 2007 to 2012 to include the corrected data provided by a hotel and so differ from previously published figures.

4: Number of Arrivals

Table 4.01 Number of Arrivals (All Arrivals), 1987 - 1993

	Number of arrivals by month (000's)						
	1987	1988	1989	1990	1991	1992	1993
January	4.1	4.6	3.4	3.4	3.4	2.3	1.9
February	4.6	4.7	4.3	4.1	3.4	3.0	2.4
March	6.3	6.3	5.2	7.9	3.9	3.4	2.9
April	6.2	6.1	5.3	8.4	3.6	3.6	3.0
May	5.8	6.0	4.6	6.0	4.2	4.0	3.8
June	5.1	5.8	5.0	5.3	3.2	4.1	3.5
July	4.4	5.4	6.6	6.3	3.9	3.8	3.3
August	5.1	5.3	5.9	4.6	3.5	3.6	3.3
September	6.2	5.8	7.4	5.8	4.3	4.1	4.4
October	5.3	4.9	7.7	5.0	4.7	3.9	4.5
November	6.0	5.8	6.7	4.1	2.6	2.8	3.5
December	5.2	4.2	5.8	3.9	2.5	2.4	2.5
Total	64.3	64.9	67.9	64.8	43.2	41.0	39.1

Table 4.02 Number of Arrivals (Tourist Arrivals), 1987 - 1993

	Number of arrivals by month (000's)						
	1987	1988	1989	1990	1991	1992	1993
January	3.7	3.2	2.4	2.0	1.9	1.6	1.5
February	3.5	3.6	3.5	2.4	1.9	2.2	1.5
March	5.0	4.7	4.1	3.0	2.3	2.7	2.1
April	5.0	4.8	4.1	3.4	2.1	2.8	2.1
May	3.8	4.6	3.6	2.8	2.4	2.9	2.6
June	3.5	4.0	4.2	2.3	2.1	2.8	2.4
July	3.6	3.6	3.9	3.1	2.5	2.6	2.2
August	4.1	3.6	4.1	2.5	2.4	2.9	2.5
September	4.8	3.8	4.4	3.1	2.4	2.6	2.9
October	4.8	3.6	5.3	2.6	2.5	2.7	2.9
November	4.8	3.6	4.4	2.1	1.6	2.0	2.3
December	3.4	2.6	3.5	2.0	1.7	1.9	1.9
Total	50.0	45.7	47.5	31.3	26.0	29.9	27.0

Note:

(i) Yearly totals have been rounded off and need not necessarily equal the sum of the rounded off monthly figures.

4: Number of Arrivals

Table 4.03 Number of Arrivals (All Arrivals), 1994 - 2000

	Number of arrivals by month (000's)						
	1994	1995	1996	1997	1998	1999	2000
January	2.5	2.0	2.8	2.4	3.0	2.6	2.2
February	2.4	2.8	3.4	3.2	2.8	2.6	2.8
March	3.1	3.4	4.0	3.3	3.1	3.6	3.9
April	3.1	4.0	4.1	3.9	3.4	3.7	4.2
May	3.9	3.8	4.2	4.8	3.8	3.6	4.8
June	3.3	3.9	4.1	4.7	3.5	3.8	4.8
July	3.4	4.6	3.8	4.3	3.4	3.4	4.0
August	3.3	4.4	3.9	5.5	4.2	4.3	4.6
September	4.3	5.7	4.7	5.4	4.0	4.2	5.6
October	3.9	4.1	4.3	3.9	4.2	4.3	4.8
November	2.5	3.1	3.3	3.8	3.6	3.7	3.9
December	2.2	3.2	3.5	3.2	2.8	2.4	3.3
Total	37.9	45.1	46.1	48.4	41.6	42.1	48.9

Table 4.04 Number of Arrivals (Tourist Arrivals), 1994 - 2000

	Number of arrivals by month (000's)						
	1994	1995	1996	1997	1998	1999	2000
January	1.7	1.6	2.0	1.5	1.6	1.7	1.5
February	1.7	2.2	2.5	1.9	1.7	1.7	1.9
March	2.1	2.4	2.7	1.9	2.1	2.3	2.8
April	2.1	2.8	3.0	2.2	2.3	2.3	3.0
May	2.4	2.6	2.6	2.8	2.5	2.5	3.5
June	2.3	2.7	2.6	2.7	2.4	2.5	3.6
July	2.4	3.3	2.7	2.8	2.3	2.2	2.9
August	2.3	3.1	3.0	3.3	3.0	2.8	3.5
September	2.9	4.1	3.0	3.1	3.0	2.7	4.1
October	2.7	3.2	3.1	2.8	2.9	3.0	3.6
November	1.7	2.5	2.2	2.0	2.4	2.3	2.9
December	1.6	2.5	2.5	1.9	1.8	1.7	2.4
Total	25.9	33.1	31.9	28.9	27.9	27.7	35.9

Note:

(i) Yearly totals have been rounded off and need not necessarily equal the sum of the rounded off monthly figures.

4: Number of Arrivals

Table 4.05 Number of Arrivals by Month (All Arrivals), 2001 - 2007

	Number of arrivals by month (000's)						
	2001	2002	2003	2004	2005	2006	2007
January	3.1	3.2	3.7	3.8	4.0	4.3	3.9
February	3.3	4.1	4.4	4.4	4.6	4.5	4.1
March	4.5	4.6	5.4	5.5	5.0	5.5	4.6
April	4.3	4.5	5.0	4.7	5.1	5.3	5.0
May	5.0	5.1	5.6	5.7	5.7	5.7	5.9
June	5.0	4.3	5.9	5.5	5.1	5.5	5.2
July	5.0	5.8	5.2	5.3	5.0	5.0	5.3
August	5.3	5.8	5.9	5.6	5.5	4.5	5.6
September	5.4	6.6	5.8	6.2	5.7	5.4	5.6
October	5.1	6.2	5.6	5.6	5.3	5.4	6.0
November	4.3	5.1	5.4	5.4	4.4	4.4	4.8
December	3.5	4.1	3.9	3.9	3.7	3.8	3.6
Total	53.8	59.4	61.8	61.7	58.8	59.2	59.4

Table 4.06 Number of Arrivals by Month (Tourist Arrivals), 2001 - 2007

	Number of arrivals by month (000's)						
	2001	2002	2003	2004	2005	2006	2007
January	2.3	2.3	2.3	2.7	2.8	2.5	2.4
February	2.4	3.0	2.9	3.0	3.3	2.6	2.3
March	3.2	3.5	3.6	3.8	3.7	3.6	3.1
April	3.1	3.2	3.2	3.4	3.6	3.6	3.1
May	3.5	3.8	3.5	4.4	4.3	4.2	3.4
June	3.4	3.0	3.7	3.8	3.8	3.9	3.1
July	3.7	4.0	3.5	3.9	3.5	3.2	3.0
August	4.1	4.1	4.1	4.2	4.0	3.2	3.4
September	4.1	4.7	4.0	4.6	4.1	3.8	3.5
October	3.8	4.0	3.9	4.1	3.8	3.9	3.6
November	3.4	3.3	3.5	3.8	2.7	3.0	2.6
December	2.5	2.7	2.6	2.8	2.2	2.2	1.9
Total	39.4	41.5	40.8	44.5	41.9	39.8	35.2

Notes:

(i) Yearly totals have been rounded off and need not necessarily equal the sum of the rounded off monthly figures.

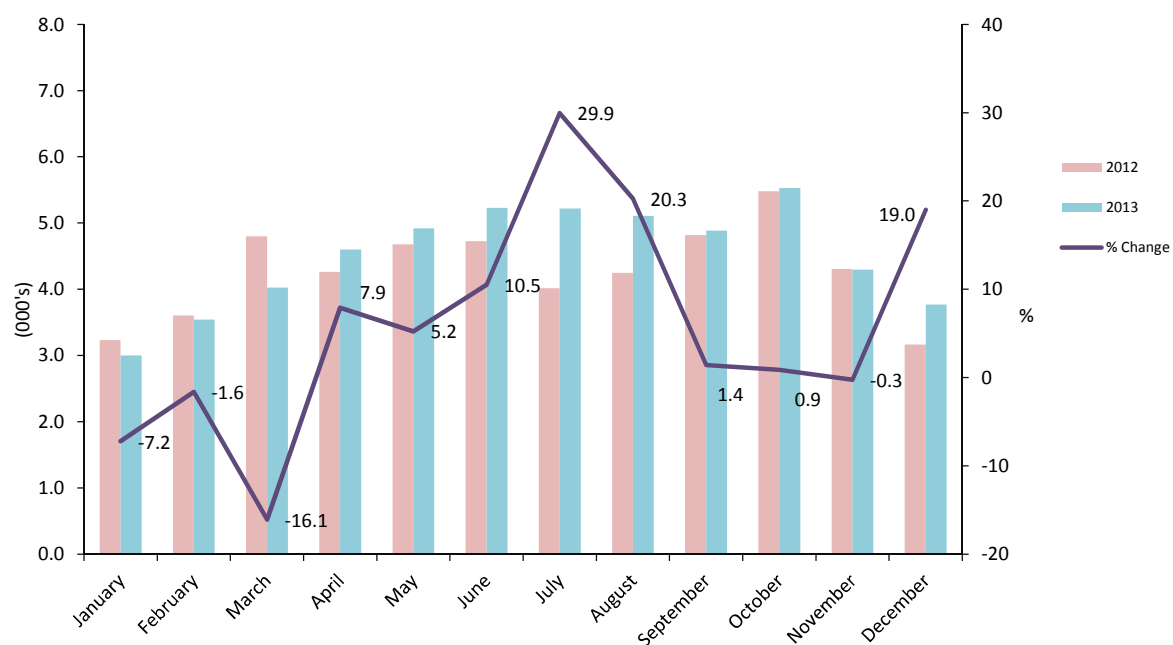
(ii) Hotel statistics have been revised from 2007 to 2012 to include the corrected data provided by a hotel and so differ from previously published figures.

4: Number of Arrivals

Table 4.07 Number of Arrivals (All Arrivals), 2008 - 2013

	Number of arrivals (000's)					
	2008	2009	2010	2011	2012	2013
January	4.0	3.7	3.2	3.5	3.2	3.0
February	3.8	4.3	3.5	3.6	3.6	3.5
March	4.2	5.2	4.2	4.5	4.8	4.0
April	5.2	5.3	3.8	4.5	4.3	4.6
May	5.5	4.9	4.7	5.0	4.7	4.9
June	5.0	4.8	4.6	5.3	4.7	5.2
July	5.3	4.6	4.9	5.2	5.0	5.2
August	6.2	4.6	4.6	5.1	4.2	5.1
September	5.7	5.0	5.0	5.3	4.8	4.9
October	5.5	5.0	5.0	5.3	5.5	5.5
November	4.4	4.0	4.4	4.5	4.3	4.3
December	3.8	3.5	3.5	3.8	3.2	3.8
Total	58.5	54.9	51.4	55.6	52.3	54.1

All Arrivals at Hotels, 2012 - 2013

**Notes:**

- (i) Yearly totals have been rounded off and need not necessarily equal the sum of the rounded off monthly figures.
(ii) Hotel statistics have been revised from 2007 to 2012 to include the corrected data provided by a hotel and so differ from previously published figures.

4: Number of Arrivals

Table 4.08 Number of Arrivals (Tourist Arrivals), 2008 - 2013

	Number of arrivals (000's)					
	2008	2009	2010	2011	2012	2013
January	1.9	1.9	1.5	1.9	1.6	1.6
February	1.7	2.4	2.1	2.0	2.0	1.9
March	2.2	3.4	2.6	2.7	2.8	2.1
April	3.0	3.2	2.3	2.8	2.7	2.1
May	2.9	3.0	2.8	3.1	3.0	2.5
June	3.0	2.8	2.7	3.0	3.2	2.7
July	2.9	2.8	3.0	3.2	3.3	2.7
August	3.3	2.9	3.0	3.4	2.8	2.6
September	3.3	3.3	3.2	3.6	3.1	3.0
October	3.0	3.0	3.0	3.5	3.2	3.1
November	2.3	2.1	2.3	2.7	2.4	2.4
December	1.9	1.9	1.9	2.1	1.7	1.7
Total	31.3	32.7	30.3	34.0	31.8	28.6

**Notes:**

(i) Yearly totals have been rounded off and need not necessarily equal the sum of the rounded off monthly figures.

(ii) Hotel statistics have been revised from 2007 to 2012 to include the corrected data provided by a hotel and so differ from previously published figures.

5: Guest Nights Sold/Offered, Sleeper Occupancy Rates, (All Arrivals)

Table 5.01 Guest Nights Sold/Offered, Sleeper Occupancy Rates, 1987 - 1990

	Guest nights sold (000's)				Guest nights offered (000's)				Sleeper occupancy rates (%)			
	1987	1988	1989	1990	1987	1988	1989	1990	1987	1988	1989	1990
January	19	16	15	11	46	46	42	37	42.1	35.8	35.2	31.2
February	18	19	18	14	42	44	40	37	43.9	42.6	46.0	37.3
March	26	26	22	19	46	48	42	42	57.5	53.6	52.0	45.3
April	24	26	23	23	43	45	42	41	55.6	57.1	54.8	55.4
May	25	26	19	21	45	47	44	42	55.7	55.1	41.9	50.4
June	22	29	19	15	44	47	43	39	49.1	61.6	43.9	37.3
July	20	27	20	18	45	48	43	42	44.5	55.8	46.8	43.8
August	26	24	19	15	45	48	43	41	57.7	50.4	45.1	35.2
September	29	26	19	18	45	44	42	41	65.6	60.4	46.0	44.4
October	26	26	19	18	44	46	40	40	58.8	56.4	46.2	44.5
November	24	22	14	12	44	43	38	40	54.4	51.4	38.2	30.2
December	20	19	13	13	46	45	42	39	42.5	42.6	31.2	32.4
Total	279	286	220	197	535	551	501	481	52.3	52.0	44.0	40.8

Table 5.02 Guest Nights Sold/Offered, Sleeper Occupancy Rates, 1991 - 1994

	Guest nights sold (000's)				Guest nights offered (000's)				Sleeper occupancy rates (%)			
	1991	1992	1993	1994	1991	1992	1993	1994	1991	1992	1993	1994
January	12	9	7	10	40	42	33	34	29.4	20.6	21.5	29.4
February	13	9	9	9	37	41	30	30	34.5	22.8	30.1	31.3
March	17	14	12	12	44	46	33	33	37.5	29.6	36.2	37.2
April	14	14	12	12	41	42	32	31	34.0	32.6	38.3	39.2
May	17	15	16	15	41	43	34	35	40.2	35.6	45.6	42.5
June	16	16	15	14	44	47	32	33	35.8	34.8	48.0	40.6
July	16	16	14	15	43	45	32	35	37.9	35.2	41.8	42.4
August	16	14	14	13	40	44	33	35	41.2	32.2	44.0	37.0
September	17	16	18	16	44	41	32	33	39.2	39.7	56.2	48.9
October	18	15	17	15	43	42	34	35	42.5	34.6	50.9	43.9
November	13	10	13	9	41	32	32	33	31.1	32.6	39.4	27.8
December	10	9	10	9	45	33	33	34	22.4	27.0	29.6	25.2
Total	178	157	157	149	502	497	391	401	35.5	31.6	40.2	37.2

Note:

(i) Yearly totals have been rounded off and need not necessarily equal the sum of the rounded off monthly figures.

5: Guest Nights Sold/Offered, Sleeper Occupancy Rates, (All Arrivals)

Table 5.03 Guest Nights Sold/Offered, Sleeper Occupancy Rates, 1995 - 1998

	Guest nights sold (000's)				Guest nights offered (000's)				Sleeper occupancy rates (%)			
	1995	1996	1997	1998	1995	1996	1997	1998	1995	1996	1997	1998
January	6	8	8	7	32	32	31	30	19.0	24.9	24.1	24.8
February	10	9	10	9	28	30	29	25	34.9	29.9	34.1	35.4
March	10	12	10	11	31	32	31	28	33.4	36.3	33.0	38.8
April	13	12	11	11	25	31	31	26	49.5	39.1	36.3	42.4
May	13	14	14	12	31	32	32	27	41.4	43.0	45.0	45.6
June	14	13	13	13	30	30	30	28	46.3	37.2	44.4	45.9
July	15	12	14	13	32	31	31	29	48.2	39.0	44.1	43.9
August	15	13	16	16	32	31	31	29	46.2	42.3	51.3	54.4
September	18	16	16	17	31	31	31	28	58.0	51.9	50.7	59.8
October	13	13	14	15	32	31	31	29	41.1	42.8	44.1	50.2
November	9	10	10	12	31	30	31	28	28.1	31.3	31.7	43.8
December	9	9	9	9	32	31	31	29	26.7	29.0	28.2	32.2
Total	144	141	144	144	369	372	370	336	39.2	37.8	39.0	43.1

Table 5.04 Guest Nights Sold/Offered, Sleeper Occupancy Rates, 1999 - 2002

	Guest nights sold (000's)				Guest nights offered (000's)				Sleeper occupancy rates (%)			
	1999	2000	2001	2002	1999	2000	2001	2002	1999	2000	2001	2002
January	8	6	8	9	29	31	31	31	28.8	20.0	27.0	30.5
February	9	9	11	12	26	29	28	28	34.2	30.4	40.0	42.9
March	13	12	15	15	29	31	31	31	45.5	37.5	47.9	47.7
April	13	14	15	14	29	30	30	30	44.3	45.0	48.4	46.3
May	13	19	17	16	29	31	31	31	43.7	60.3	55.0	51.3
June	14	17	18	13	29	30	30	30	49.1	56.6	58.3	43.6
July	13	16	17	18	29	31	31	31	44.5	50.2	53.5	56.8
August	16	16	18	18	29	31	31	31	56.3	51.8	57.4	58.8
September	16	19	20	21	29	31	30	30	56.9	61.7	64.6	69.3
October	15	15	18	19	31	31	31	31	50.0	48.7	57.3	61.3
November	14	12	13	15	30	30	30	30	46.0	38.9	43.5	50.9
December	8	11	11	11	31	31	31	31	25.6	34.1	34.1	36.4
Total	154	164	179	182	351	368	366	367	43.8	44.6	48.9	49.7

Note:

(i) Yearly totals have been rounded off and need not necessarily equal the sum of the rounded off monthly figures.

5: Guest Nights Sold/Offered, Sleeper Occupancy Rates, (All Arrivals)

Table 5.05 Guest Nights Sold/Offered, Sleeper Occupancy Rates, 2003 - 2006

	Guest nights sold (000's)				Guest nights offered (000's)				Sleeper occupancy rates (%)			
	2003	2004	2005	2006	2003	2004	2005	2006	2003	2004	2005	2006
January	10	11	12	12	31	29	31	34	33.1	36.7	38.7	34.2
February	13	13	15	13	28	29	27	31	45.5	45.2	58.0	41.2
March	16	17	15	17	31	31	29	34	51.8	56.3	52.8	49.5
April	15	15	17	16	30	30	28	33	51.1	50.0	59.3	49.3
May	17	18	18	17	31	31	30	34	54.4	57.8	60.4	50.7
June	18	18	18	18	30	30	28	33	60.9	59.4	64.5	55.4
July	16	19	16	19	31	31	29	35	53.2	61.2	57.1	54.0
August	18	21	18	17	31	31	29	35	58.2	65.9	62.0	49.3
September	20	22	20	20	30	31	28	34	64.8	71.7	70.1	57.9
October	18	19	20	18	31	31	29	35	57.0	60.1	68.5	52.7
November	15	17	15	14	30	30	29	34	49.5	55.0	52.6	40.7
December	11	13	11	12	31	31	32	35	34.6	40.1	33.7	33.7
Total	188	202	196	193	367	366	349	406	51.2	55.1	56.2	47.3

Table 5.06 Guest Nights Sold/Offered, Sleeper Occupancy Rates, 2007 - 2010

	Guest nights sold (000's)				Guest nights offered (000's)				Sleeper occupancy rates (%)			
	2007	2008	2009	2010	2007	2008	2009	2010	2007	2008	2009	2010
January	12	14	13	10	38	36	35	35	31.3	39.2	36.3	28.5
February	14	13	15	12	35	34	31	31	41.7	39.5	48.9	39.2
March	15	14	18	13	38	36	35	35	39.0	39.0	49.7	37.3
April	17	18	18	14	37	35	34	34	46.8	51.2	52.0	39.9
May	16	18	18	16	36	36	35	35	45.5	50.4	51.7	46.5
June	18	19	18	16	35	35	34	34	51.2	53.4	53.7	48.0
July	18	20	18	17	36	36	35	35	50.5	54.1	51.1	48.7
August	21	24	19	18	36	36	35	35	57.9	68.8	55.1	52.0
September	21	22	19	20	35	35	34	34	60.6	62.9	56.3	57.1
October	22	21	18	17	37	36	35	35	59.2	58.5	51.1	48.0
November	16	14	13	13	36	34	34	34	43.8	42.3	38.0	39.5
December	12	12	11	11	36	34	35	35	32.3	34.7	32.4	31.7
Total	202	210	199	178	434	425	414	413	46.5	49.5	48.0	43.0

Notes:

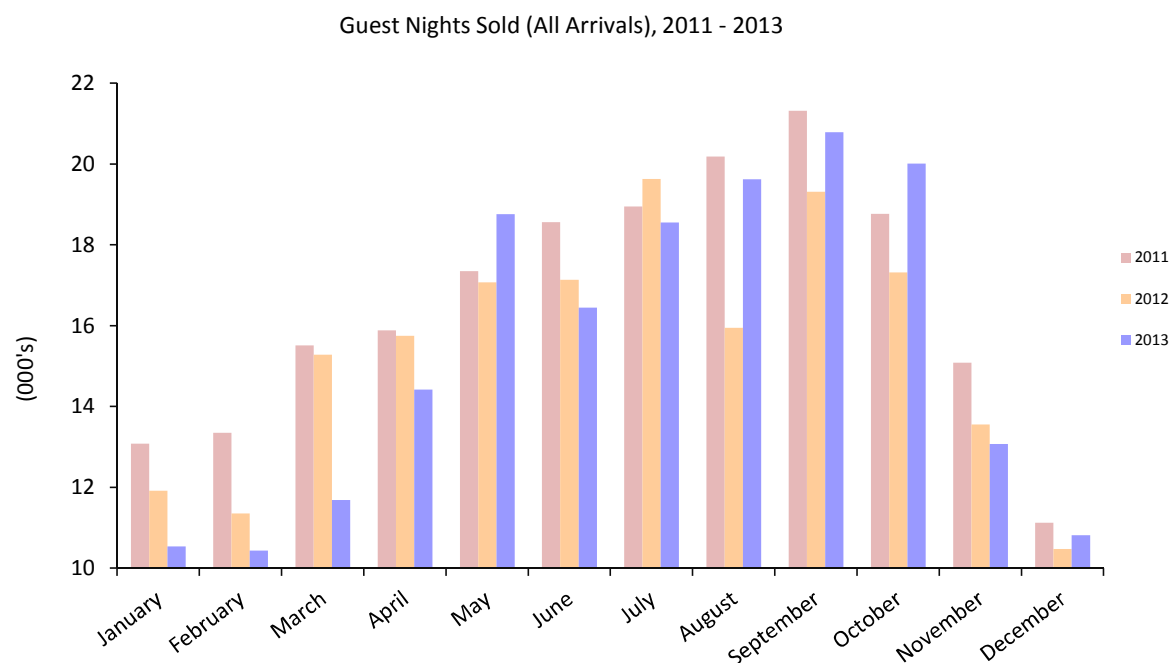
(i) Yearly totals have been rounded off and need not necessarily equal the sum of the rounded off monthly figures.

(ii) Hotel statistics have been revised from 2007 to 2012 to include the corrected data provided by a hotel and so differ from previously published figures.

5: Guest Nights Sold/Offered, Sleeper Occupancy Rates, (All Arrivals)

Table 5.07 Guest Nights Sold, 2011 - 2013

	Guest nights sold (000's)		
	2011	2012	2013
January	13.1	11.9	10.5
February	13.4	11.4	10.4
March	15.5	15.3	11.7
April	15.9	15.8	14.4
May	17.4	17.1	18.8
June	18.6	17.1	16.5
July	19.0	19.6	18.6
August	20.2	15.9	19.6
September	21.3	19.3	20.8
October	18.8	17.3	20.0
November	15.1	13.6	13.1
December	11.1	10.5	10.8
Total	199.2	184.8	185.2

**Notes:**

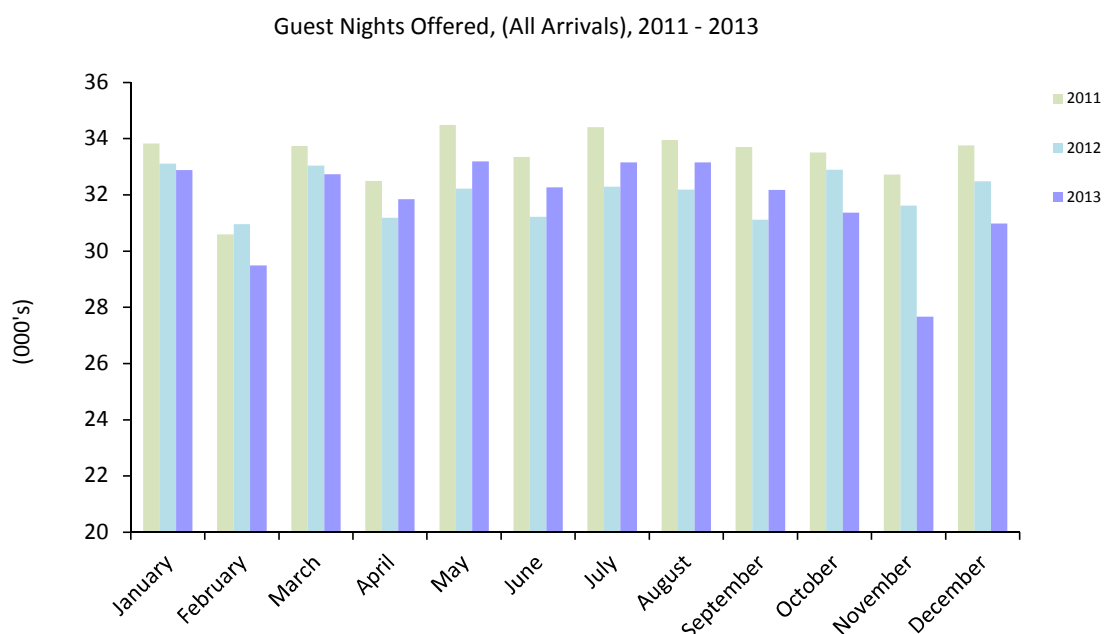
(i) Yearly totals have been rounded off and need not necessarily equal the sum of the rounded off monthly figures.

(ii) Hotel statistics have been revised from 2007 to 2012 to include the corrected data provided by a hotel and so differ from previously published figures.

5: Guest Nights Sold/Offered, Sleeper Occupancy Rates, (All Arrivals)

Table 5.08 Guest Nights Offered, 2011 - 2013

	Guest nights offered (000's)		
	2011	2012	2013
January	33.8	33.1	32.9
February	30.6	31.0	29.5
March	33.7	33.0	32.7
April	32.5	31.2	31.8
May	34.5	32.2	33.2
June	33.4	31.2	32.3
July	34.4	32.3	33.2
August	34.0	32.2	33.2
September	33.7	31.1	32.2
October	33.5	32.9	31.4
November	32.7	31.6	27.7
December	33.8	32.5	31.0
Total	400.5	384.3	380.9

**Notes:**

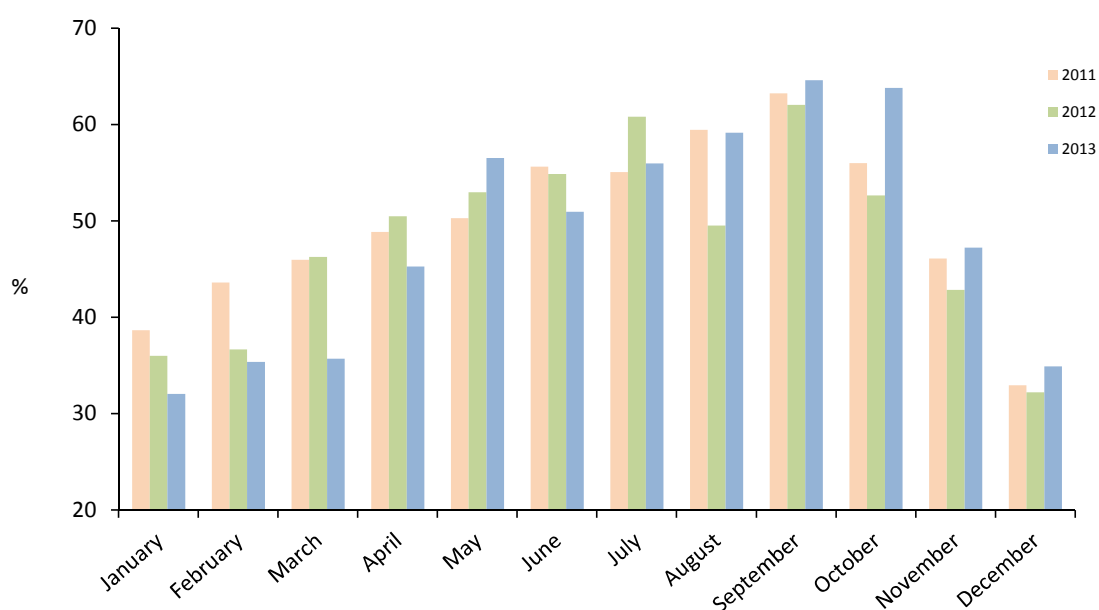
- (i) Yearly totals have been rounded off and need not necessarily equal the sum of the rounded off monthly figures.
- (ii) Hotel statistics have been revised from 2007 to 2012 to include the corrected data provided by a hotel and so differ from previously published figures.

5: Guest Nights Sold/Offered, Sleeper Occupancy rates, (All Arrivals)

Table 5.09 Sleeper Occupancy Rates, 2011 - 2013

Sleeper occupancy rates (%)			
	2011	2012	2013
January	38.7	36.0	32.1
February	43.6	36.7	35.4
March	46.0	46.3	35.7
April	48.9	50.5	45.3
May	50.3	53.0	56.5
June	55.7	54.9	51.0
July	55.1	60.8	56.0
August	59.5	49.6	59.2
September	63.3	62.1	64.6
October	56.0	52.7	63.8
November	46.1	42.9	47.3
December	33.0	32.3	34.9
Total	49.7	48.1	48.6

% Sleeper Occupancy Rates, (All Arrivals), 2011 - 2013

**Notes:**

(i) Yearly totals have been rounded off and need not necessarily equal the sum of the rounded off monthly figures.

(ii) Hotel statistics have been revised from 2007 to 2012 to include the corrected data provided by a hotel and so differ from previously published figures.

6: Guest Nights Sold/Offered, Sleeper Occupancy Rates, (Tourist Arrivals)

Table 6.01 Guest Nights Sold/Offered, Sleeper Occupancy Rates, 1987 - 1990

	Guest nights sold (000's)				Guest nights offered (000's)				Sleeper occupancy rates (%)			
	1987	1988	1989	1990	1987	1988	1989	1990	1987	1988	1989	1990
January	15	13	10	8	46	46	42	37	33.6	27.5	23.7	22.7
February	15	14	13	10	42	44	40	37	34.8	32.2	33.4	27.1
March	21	19	15	13	46	48	42	42	46.3	39.8	36.2	31.0
April	19	20	16	14	43	45	42	41	44.9	44.8	37.0	34.0
May	18	19	12	12	45	47	44	42	38.6	40.3	27.9	29.4
June	16	20	14	10	44	47	43	39	36.9	43.5	32.7	24.3
July	15	19	13	12	45	48	43	42	34.3	39.2	30.6	27.4
August	19	17	13	10	45	48	43	41	42.5	34.5	30.6	23.1
September	22	17	12	12	45	44	42	41	49.7	37.8	29.8	30.0
October	21	17	14	11	44	46	40	40	46.4	37.9	34.0	27.8
November	18	14	11	8	44	43	38	40	41.8	32.5	27.6	19.5
December	14	11	9	8	46	45	42	39	29.8	24.3	21.7	20.9
Total	213	200	152	128	535	551	501	481	40.0	36.2	30.4	26.5

Table 6.02 Guest Nights Sold/Offered, Sleeper Occupancy Rates, 1991 - 1994

	Guest nights sold (000's)				Guest nights offered (000's)				Sleeper occupancy rates (%)			
	1991	1992	1993	1994	1991	1992	1993	1994	1991	1992	1993	1994
January	7	5	4	7	40	42	33	34	17.7	12.9	12.4	19.5
February	8	6	5	6	37	41	30	30	20.2	15.4	17.7	21.1
March	8	9	8	8	44	46	33	33	19.1	19.3	23.0	24.5
April	9	9	8	9	41	42	32	31	21.9	21.7	25.2	27.1
May	10	9	10	10	41	43	34	35	23.3	20.7	28.5	28.5
June	8	10	10	9	44	47	32	33	19.4	22.0	32.7	28.3
July	10	10	8	10	43	45	32	35	23.2	21.3	26.2	28.7
August	8	10	10	8	40	44	33	35	21.3	22.0	30.5	25.6
September	8	9	12	12	44	41	32	33	18.2	22.7	36.8	35.2
October	10	9	11	11	43	42	34	35	23.3	20.8	33.2	30.4
November	7	6	9	7	41	32	32	33	16.4	20.1	27.8	20.6
December	6	6	7	6	45	33	33	34	12.9	17.5	21.8	18.9
Total	99	98	103	103	502	497	391	401	19.7	19.8	26.4	25.8

Note:

(i) Yearly totals have been rounded off and need not necessarily equal the sum of the rounded off monthly figures.

6: Guest Nights Sold/Offered, Sleeper Occupancy Rates, (Tourist Arrivals)

Table 6.03 Guest Nights Sold/Offered, Sleeper Occupancy Rates, 1995 - 1998

	Guest nights sold (000's)				Guest nights offered (000's)				Sleeper occupancy rates (%)			
	1995	1996	1997	1998	1995	1996	1997	1998	1995	1996	1997	1998
January	5	5	5	4	32	32	31	30	15.1	16.4	15.2	14.4
February	7	7	6	5	28	30	29	25	25.8	22.8	22.3	21.4
March	8	9	7	7	31	32	31	28	26.4	26.7	21.3	25.8
April	10	10	7	7	25	31	31	26	38.1	30.9	23.9	28.8
May	9	10	10	8	31	32	32	27	30.8	30.9	29.9	30.6
June	11	9	9	9	30	30	30	28	37.2	30.5	28.9	30.5
July	11	9	9	8	32	31	31	29	36.2	29.3	28.6	28.4
August	11	10	11	10	32	31	31	29	34.8	32.0	34.5	36.5
September	14	10	11	12	31	31	31	28	45.6	34.3	34.8	41.5
October	11	10	9	10	32	31	31	29	34.1	30.9	28.3	34.6
November	7	7	6	8	31	30	31	28	23.8	21.5	20.9	27.1
December	7	6	6	6	32	31	31	29	21.8	20.7	18.9	19.5
Total	113	101	95	94	369	372	370	336	30.7	27.2	25.6	28.2

Table 6.04 Guest Nights Sold/Offered, Sleeper Occupancy Rates, 1999 - 2002

	Guest nights sold (000's)				Guest nights offered (000's)				Sleeper occupancy rates (%)			
	1999	2000	2001	2002	1999	2000	2001	2002	1999	2000	2001	2002
January	5	4	6	6	29	31	31	31	17.2	13.0	19.3	20.4
February	6	6	8	8	26	29	28	28	21.8	20.0	26.9	28.8
March	8	8	9	11	29	31	31	31	27.7	25.9	30.7	34.5
April	8	9	9	10	29	30	30	30	27.3	30.8	29.1	33.0
May	9	12	11	11	29	31	31	31	30.0	39.1	34.9	36.5
June	9	11	12	10	29	30	30	30	31.4	36.6	39.5	33.0
July	8	10	11	12	29	31	31	31	27.6	33.4	37.0	38.7
August	10	12	12	13	29	31	31	31	35.2	37.6	40.0	40.7
September	10	14	14	15	29	31	30	30	36.2	44.3	46.3	48.7
October	11	10	13	13	31	31	31	31	34.3	31.6	40.6	40.9
November	9	8	9	9	30	30	30	30	28.8	26.7	29.6	29.8
December	5	7	7	7	31	31	31	31	17.3	21.6	22.1	22.9
Total	98	111	121	125	351	368	366	367	27.9	30.1	33.0	34.0

Note:

(i) Yearly totals have been rounded off and need not necessarily equal the sum of the rounded off monthly figures.

6: Guest Nights Sold/Offered, Sleeper Occupancy Rates, (Tourist Arrivals)

Table 6.05 Guest Nights Sold/Offered, Sleeper Occupancy Rates, 2003 - 2006

	Guest nights sold (000's)				Guest nights offered (000's)				Sleeper occupancy rates (%)			
	2003	2004	2005	2006	2003	2004	2005	2006	2003	2004	2005	2006
January	6	7	9	8	31	29	31	34	20.6	22.9	29.1	22.4
February	8	8	12	8	28	29	27	31	29.2	27.9	43.6	26.4
March	11	11	12	11	31	31	29	34	34.0	37.0	42.6	31.2
April	10	10	13	11	30	30	28	33	31.5	33.9	47.1	32.4
May	11	12	15	12	31	31	30	34	34.5	39.6	48.8	33.9
June	12	11	15	13	30	30	28	33	38.5	37.4	52.2	37.8
July	11	15	13	12	31	31	29	35	34.8	47.4	43.7	34.9
August	13	16	13	13	31	31	29	35	40.4	50.7	46.1	35.8
September	14	17	15	14	30	31	28	34	46.5	55.2	54.7	41.4
October	12	15	16	13	31	31	29	35	40.0	48.2	53.4	38.0
November	10	13	10	9	30	30	29	34	33.2	41.5	36.0	27.2
December	6	10	7	7	31	31	32	35	20.9	30.4	21.1	19.7
Total	123	145	150	129	367	366	349	406	33.7	39.5	42.9	31.7

Table 6.06 Guest Nights Sold/Offered, Sleeper Occupancy Rates, 2007 - 2010

	Guest nights sold (000's)				Guest nights offered (000's)				Sleeper occupancy rates (%)			
	2007	2008	2009	2010	2007	2008	2009	2010	2007	2008	2009	2010
January	7	6	6	5	38	36	35	35	18.3	15.9	18.0	13.1
February	7	5	7	7	35	34	31	31	21.1	15.1	21.7	21.3
March	9	7	11	8	38	36	35	35	23.1	18.1	30.3	22.5
April	10	10	11	8	37	35	34	34	27.5	27.1	31.8	22.6
May	10	10	11	10	36	36	35	35	27.9	27.5	30.2	28.6
June	11	11	10	10	35	35	34	34	30.5	30.2	27.8	29.3
July	10	10	11	11	36	36	35	35	27.1	27.2	30.5	31.4
August	11	13	11	11	36	36	35	35	31.3	35.5	31.4	32.7
September	13	12	12	13	35	35	34	34	36.1	34.8	35.0	38.6
October	13	11	11	10	37	36	35	35	35.4	31.3	30.3	29.7
November	8	7	6	8	36	34	34	34	21.9	21.6	17.3	23.8
December	6	6	6	6	36	34	35	35	15.5	17.4	16.4	17.4
Total	114	107	111	107	434	425	414	413	26.2	25.2	26.8	25.9

Notes:

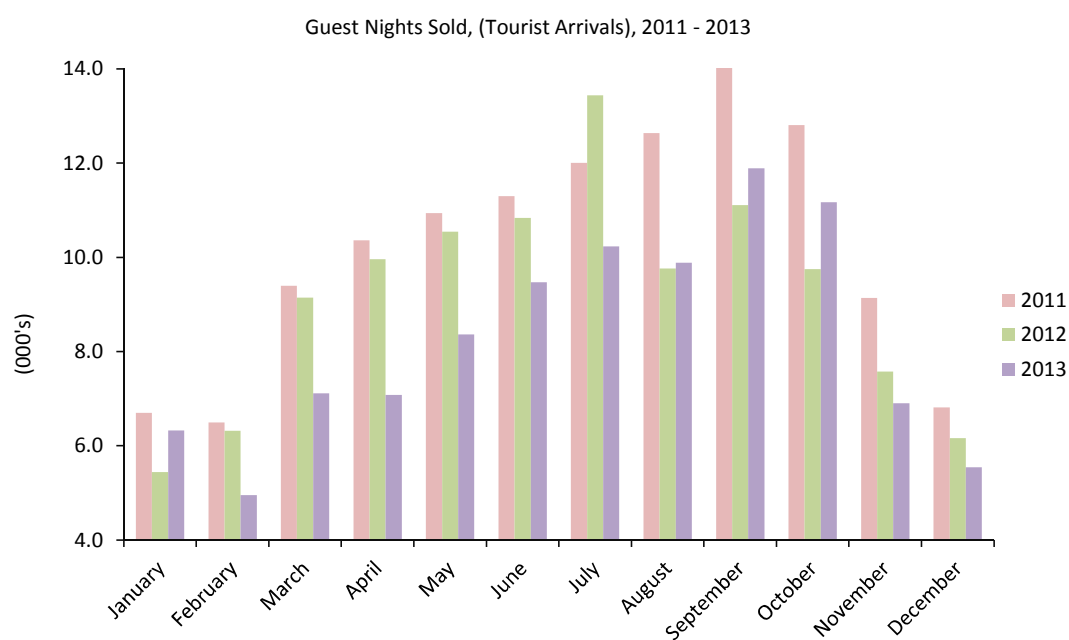
(i) Yearly totals have been rounded off and need not necessarily equal the sum of the rounded off monthly figures.

(ii) Hotel statistics have been revised from 2007 to 2012 to include the corrected data provided by a hotel and so differ from previously published figures.

6: Guest Nights Sold/Offered, Sleeper Occupancy Rates, (Tourist Arrivals)

Table 6.07 Guest Nights Sold, 2011 - 2013

	Guest nights sold (000's)		
	2011	2012	2013
January	6.7	5.4	6.3
February	6.5	6.3	5.0
March	9.4	9.1	7.1
April	10.4	10.0	7.1
May	10.9	10.5	8.4
June	11.3	10.8	9.5
July	12.0	13.4	10.2
August	12.6	9.8	9.9
September	14.2	11.1	11.9
October	12.8	9.8	11.2
November	9.1	7.6	6.9
December	6.8	6.2	5.5
Total	122.8	110.0	98.9

**Notes:**

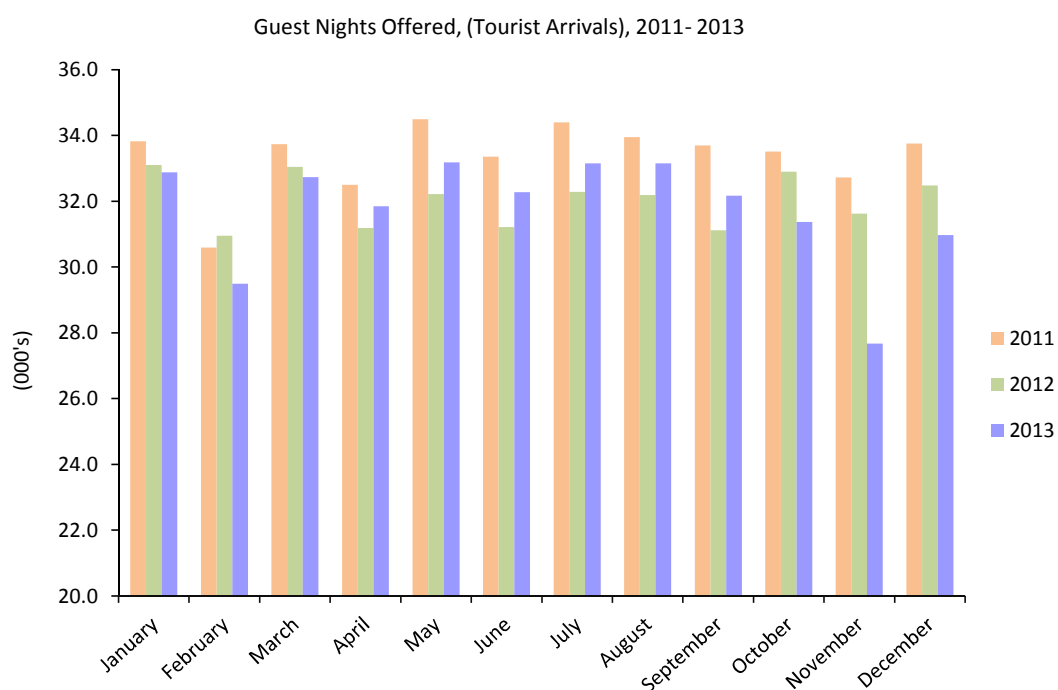
(i) Yearly totals have been rounded off and need not necessarily equal the sum of the rounded off monthly figures.

(ii) Hotel statistics have been revised from 2007 to 2012 to include the corrected data provided by a hotel and so differ from previously published figures.

6: Guest Nights Sold/Offered, Sleeper Occupancy Rates, (Tourist Arrivals)

Table 6.08 Guest Nights Offered, 2011 - 2013

	Guest nights offered (000's)		
	2011	2012	2013
January	33.8	33.1	32.9
February	30.6	31.0	29.5
March	33.7	33.0	32.7
April	32.5	31.2	31.8
May	34.5	32.2	33.2
June	33.4	31.2	32.3
July	34.4	32.3	33.2
August	34.0	32.2	33.2
September	33.7	31.1	32.2
October	33.5	32.9	31.4
November	32.7	31.6	27.7
December	33.8	32.5	31.0
Total	400.5	384.3	380.9

**Notes:**

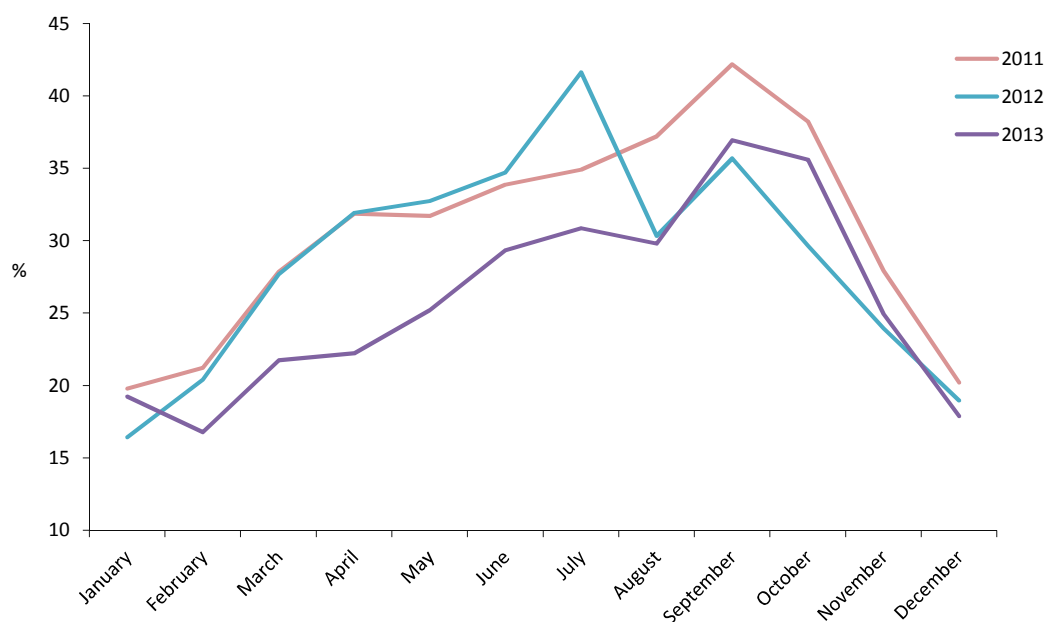
- (i) Yearly totals have been rounded off and need not necessarily equal the sum of the rounded off monthly figures.
(ii) Hotel statistics have been revised from 2007 to 2012 to include the corrected data provided by a hotel and so differ from previously published figures.

6: Guest Nights Sold/Offered, Sleeper Occupancy Rates, (Tourist Arrivals)

Table 6.09 Sleeper Occupancy Rates, 2011 - 2013

	Sleeper occupancy rates (%)		
	2011	2012	2013
January	19.8	16.4	19.2
February	21.2	20.4	16.8
March	27.9	27.7	21.7
April	31.9	31.9	22.2
May	31.7	32.7	25.2
June	33.9	34.7	29.4
July	34.9	41.6	30.9
August	37.2	30.3	29.8
September	42.2	35.7	37.0
October	38.2	29.6	35.6
November	27.9	24.0	24.9
December	20.2	19.0	17.9
Total	30.7	28.6	26.0

Sleeper Occupancy Rates (Tourist Arrivals), 2011 - 2013

**Notes:**

- (i) Yearly totals have been rounded off and need not necessarily equal the sum of the rounded off monthly figures.
(ii) Hotel statistics have been revised from 2007 to 2012 to include the corrected data provided by a hotel and so differ from previously published figures.

7: Average Length of Stay (Nights)

Table 7.01 Average Length of Stay Per Person (All Arrivals), 2002 - 2013

Year	Average length of stay (nights)												Total
	Jan	Feb	Mar	Apr	May	Jun	Jul	Aug	Sep	Oct	Nov	Dec	
2002	3.0	2.9	3.2	3.1	3.1	3.0	3.1	3.1	3.2	3.1	3.0	2.8	3.1
2003	2.8	2.9	3.0	3.1	3.0	3.1	3.1	3.1	3.4	3.2	2.8	2.7	3.0
2004	2.9	2.9	3.2	3.2	3.1	3.2	3.6	3.7	3.5	3.4	3.1	3.2	3.3
2005	3.0	3.4	3.1	3.3	3.2	3.6	3.3	3.3	3.5	3.8	3.5	2.9	3.3
2006	2.8	2.9	3.1	3.1	3.0	3.4	3.8	3.8	3.6	3.4	3.1	3.0	3.2
2007	3.1	3.5	3.3	3.4	2.8	3.4	3.4	3.7	3.8	3.6	3.3	3.3	3.4
2008	3.6	3.5	3.4	3.5	3.4	3.8	3.7	4.0	3.8	3.8	3.3	3.2	3.6
2009	3.4	3.6	3.4	3.4	3.7	3.9	3.9	4.2	3.8	3.6	3.2	3.2	3.6
2010	3.1	3.6	3.1	3.6	3.5	3.5	3.5	3.9	3.9	3.4	3.1	3.2	3.5
2011	3.8	3.7	3.4	3.5	3.5	3.5	3.7	3.9	4.0	3.6	3.4	2.9	3.6
2012	3.7	3.2	3.2	3.7	3.7	3.6	3.9	3.8	4.0	3.2	3.2	3.3	3.5
2013	3.5	2.9	2.9	3.1	3.8	3.2	3.6	3.8	4.3	3.6	3.0	2.9	3.4

Average Length of Stay (All Arrivals), 2011 - 2013

**Note:**

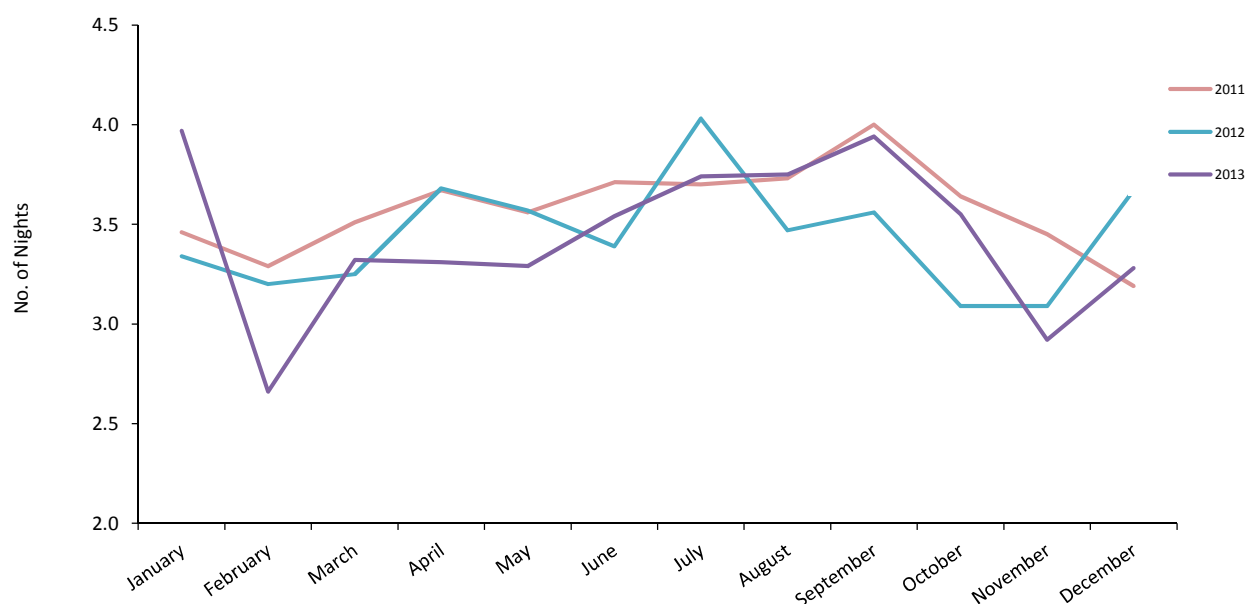
(i) Hotel statistics have been revised from 2007 to 2012 to include the corrected data provided by a hotel and so differ from previously

7: Average Length of Stay (Nights)

Table 7.02 Average Length of Stay Per Person (Tourist Arrivals), 2002 - 2013

Year	Average length of stay (nights)												Total
	Jan	Feb	Mar	Apr	May	Jun	Jul	Aug	Sep	Oct	Nov	Dec	
2002	2.8	2.7	3.0	3.1	3.0	3.4	3.0	3.1	3.2	3.2	2.7	2.7	3.0
2003	2.8	2.9	3.0	2.9	3.0	3.2	3.1	3.1	3.5	3.2	2.8	2.4	3.0
2004	2.5	2.6	3.0	3.0	2.8	3.0	3.8	3.8	3.7	3.7	3.3	3.4	3.2
2005	3.2	3.6	3.4	3.7	3.4	3.8	3.6	3.3	3.8	4.0	3.8	3.0	3.6
2006	3.0	3.1	2.9	3.0	2.8	3.2	3.8	3.9	3.7	3.4	3.0	3.0	3.2
2007	2.9	3.2	2.9	3.2	3.0	3.4	3.3	3.3	3.7	3.6	3.1	3.0	3.2
2008	3.0	3.1	3.0	3.2	3.5	3.6	3.4	3.9	3.7	3.7	3.2	3.2	3.4
2009	3.3	2.8	3.2	3.4	3.6	3.3	3.8	3.8	3.7	3.5	2.9	3.0	3.4
2010	3.0	3.2	3.1	3.4	3.6	3.7	3.7	3.9	4.1	3.5	3.5	3.2	3.5
2011	3.5	3.3	3.5	3.7	3.6	3.7	3.7	3.7	4.0	3.6	3.5	3.2	3.6
2012	3.3	3.2	3.3	3.7	3.6	3.4	4.0	3.5	3.6	3.1	3.1	3.7	3.5
2013	4.0	2.7	3.3	3.3	3.3	3.5	3.7	3.8	3.9	3.6	2.9	3.3	3.5

Average Length of Stay (Tourist Arrivals), 2011 - 2013

**Note:**

(i) Hotel statistics have been revised from 2007 to 2012 to include the corrected data provided by a hotel and so differ from previously published figures.