



H.M. GOVERNMENT OF GIBRALTAR

# HOTEL OCCUPANCY SURVEY 2012

STATISTICS OFFICE







H.M. GOVERNMENT OF GIBRALTAR

# HOTEL OCCUPANCY SURVEY 2012

STATISTICS OFFICE

H.M. Government of Gibraltar  
Statistics Office

Statistics On-line

Copies of the Hotel Occupancy Survey can be obtained, free of charge from the Statistics Office and are also available for download from the Gibraltar Government Website (<http://www.gibraltar.gov.gi/statistics/downloads>).

Historical data can be downloaded from previous copies of the report available on-line.

Comments and requests for general information should be addressed to:

Statistics Office  
99 Harbours Walk  
The New Harbours  
Gibraltar

Or

E-mail: [statistics@gibraltar.gov.gi](mailto:statistics@gibraltar.gov.gi)

Tel: +350 20075515/ +350 20075490

Fax: +350 20051160

## PREFACE

The Statistics (Hotel Occupancy Survey) Order 1971 requires that the Government Statistician prepare a report and summary of the findings of the Hotel Occupancy Survey to be laid before the Gibraltar Parliament.

This report contains a summary of the statistics collected for the years 1986 – 2012.

I must express my thanks to the establishments for their continued co-operation in the conduct of this Survey.

GOVERNMENT STATISTICIAN



## DEFINITIONS AND NOTES

- (a) **Tourist:** A tourist is a person who is primarily in Gibraltar for the purpose of a holiday. It is nevertheless up to the discretion of the individual hotels who to include under this category.
- (b) **Guest Nights:** Calculated on the basis of “one guest x one night”.
- (c) **Room Nights:** Calculated on the basis of “one room x one night”.
- (d) **Sleeper Occupancy:** Calculated as the percentage of guest nights sold over guest nights offered. It should be noted that this measure does not necessarily give an accurate indication of the ability of the hotel to accept more guests, ( e.g. one person staying in a room with two beds gives a 50% sleeper occupancy and a 100% room occupancy).
- (e) **Room Occupancy:** Calculated as the percentage of room nights sold over room nights offered.
- (f) **Abbreviations:**
  - GNS - Guest Nights Sold.
  - GNO - Guest Nights Offered.
  - RNS - Room Nights Sold.
  - RNO - Room Nights Offered.
- (g) In interpreting the figures it should be noted that:
  - (i) As from September 1992, the Montarik Hotel is not included.
  - (ii) As from November 1992, the Gibraltar Beach Hotel is not included.
  - (iii) The Sunrise Motel is included for the period January 1992 to December 1994 and re-included as from January 2007.
  - (iv) The Cannon Hotel is included with effect from July 1995.
  - (v) The Emile Youth Hostel and Herald Travel Apartments are included with effect from January 2006.
  - (vi) The Continental Hotel is included for the period January 1986 to July 2008.
  - (vii) The Governor’s Inn Apartments are included for the period January 2006 to December 2010.
- (h) This Survey is based on the figures provided by the Caleta Hotel, O’Callaghan Elliott Hotel, Rock Hotel, Bristol Hotel, Queens Hotel, Cannon Hotel, Emile Youth Hostel, Herald Travel Apartments and Sunrise Motel.





# Contents

Tables	Page(s)
<b>1. General</b>	
1.1 General Analysis, 1986 - 2012	1 - 3
<b>2. Room Nights Sold and Offered</b>	
2.1 Room Nights Sold (All Arrivals), 2006 - 2010	4
2.2 Room Nights Offered (All Arrivals), 2006 - 2010	4
2.3 Room Nights Sold and Offered (All Arrivals), 2011 - 2012	5
2.4 Room Nights Sold (Tourist Arrivals), 2006 - 2010	6
2.5 Room Nights Offered (Tourist Arrivals), 2006 - 2010	6
2.6 Room Nights Sold and Offered (Tourist Arrivals), 2011 - 2012	7
<b>3. Room Occupancy Rates</b>	
3.1 Room Occupancy Rates (All Arrivals), 2002 - 2006	8
3.2 Room Occupancy Rates (Tourist Arrivals), 2002 - 2006	8
3.3 Room Occupancy Rates (All Arrivals), 2007 - 2012	9
3.4 Room Occupancy Rates (Tourist Arrivals), 2007 - 2012	10
<b>4. Number of Arrivals</b>	
4.1 Number of Arrivals (All Arrivals), 1986 - 1992	11
4.2 Number of Arrivals (Tourist Arrivals), 1986 - 1992	11
4.3 Number of Arrivals (All Arrivals), 1993 - 1999	12
4.4 Number of Arrivals (Tourist Arrivals), 1993 - 1999	12
4.5 Number of Arrivals (All Arrivals), 2000 - 2006	13
4.6 Number of Arrivals (Tourist Arrivals), 2000 - 2006	13
4.7 Number of Arrivals (All Arrivals), 2007 - 2012	14
4.8 Number of Arrivals (Tourist Arrivals), 2007 - 2012	15
<b>5. Guest Nights Sold/Offered, Sleeper Occupancy Rates, (All Arrivals)</b>	
5.1 Guest Nights Sold/Offered, Sleeper Occupancy Rates, 1986 - 1989	16
5.2 Guest Nights Sold/Offered, Sleeper Occupancy Rates, 1990 - 1993	16
5.3 Guest Nights Sold/Offered, Sleeper Occupancy Rates, 1994 - 1997	17
5.4 Guest Nights Sold/Offered, Sleeper Occupancy Rates, 1998 - 2001	17
5.5 Guest Nights Sold/Offered, Sleeper Occupancy Rates, 2002 - 2005	18
5.6 Guest Nights Sold/Offered, Sleeper Occupancy Rates, 2006 - 2009	18
5.7 Guest Nights Sold, 2010 - 2012	19
5.8 Guest Nights Offered, 2010 - 2012	20
5.9 Sleeper Occupancy Rates, 2010 - 2012	21
<b>6. Guest Nights Sold/Offered, Sleeper Occupancy Rates, (Tourist Arrivals)</b>	
6.1 Guest Nights Sold/Offered, Sleeper Occupancy Rates, 1986 - 1989	22
6.2 Guest Nights Sold/Offered, Sleeper Occupancy Rates, 1990 - 1993	22
6.3 Guest Nights Sold/Offered, Sleeper Occupancy Rates, 1994 - 1997	23
6.4 Guest Nights Sold/Offered, Sleeper Occupancy Rates, 1998 - 2001	23
6.5 Guest Nights Sold/Offered, Sleeper Occupancy Rates, 2002 - 2005	24
6.6 Guest Nights Sold/Offered, Sleeper Occupancy Rates, 2006 - 2009	24
6.7 Guest Nights Sold, 2010 - 2012	25
6.8 Guest Nights Offered, 2010 - 2012	26
6.9 Sleeper Occupancy Rates, 2010 - 2012	27
<b>7. Average Length of Stay (Nights)</b>	
7.1 Average Length of Stay Per Person (All Arrivals), 2001 - 2012	28
7.2 Average Length of Stay Per Person (Tourist Arrivals), 2001 - 2012	29

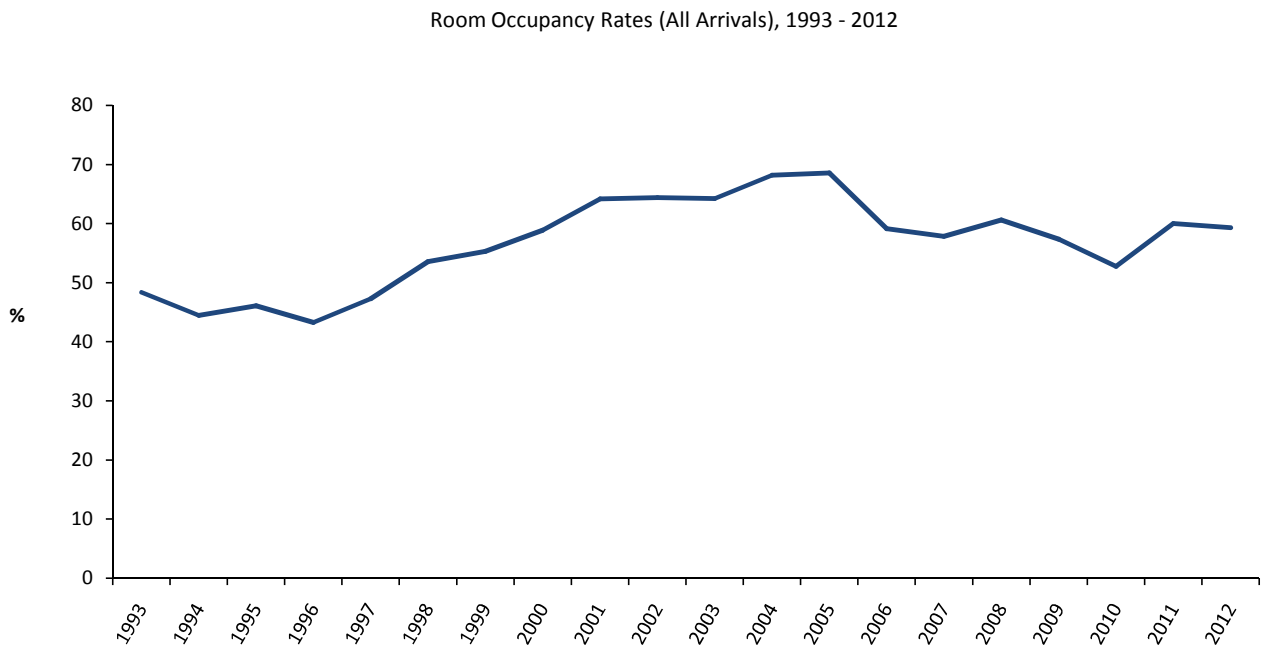
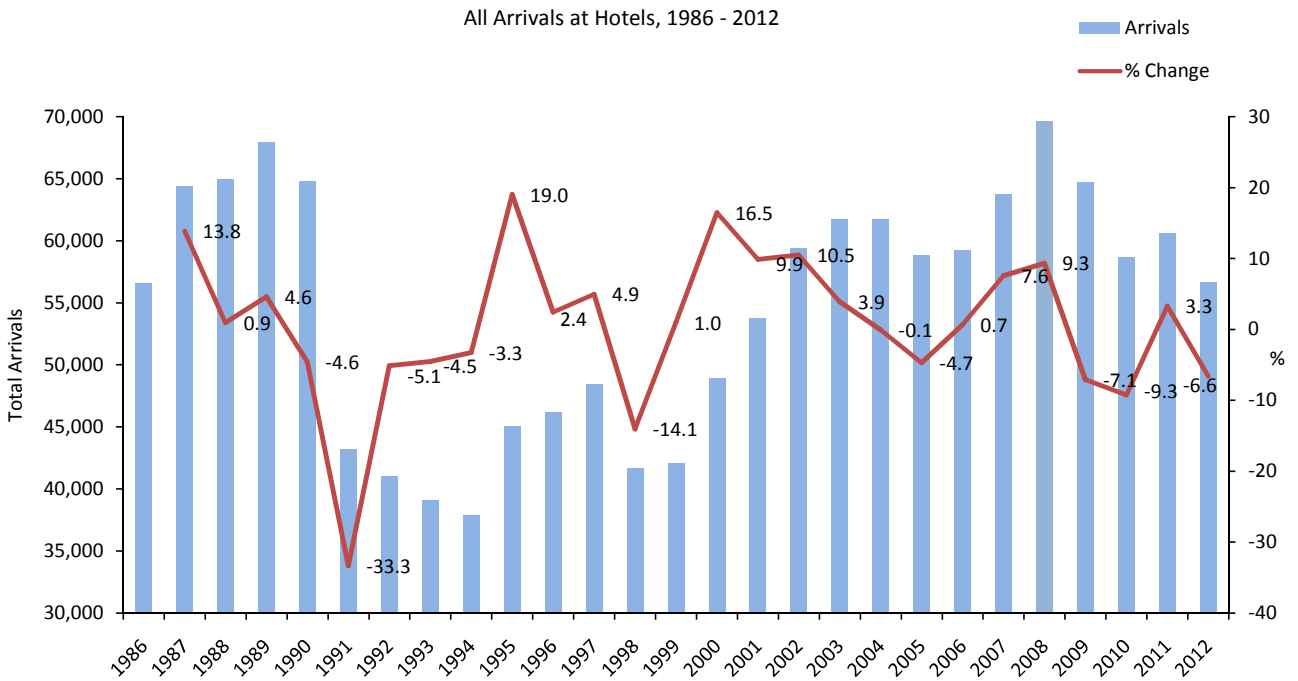


## 1: General

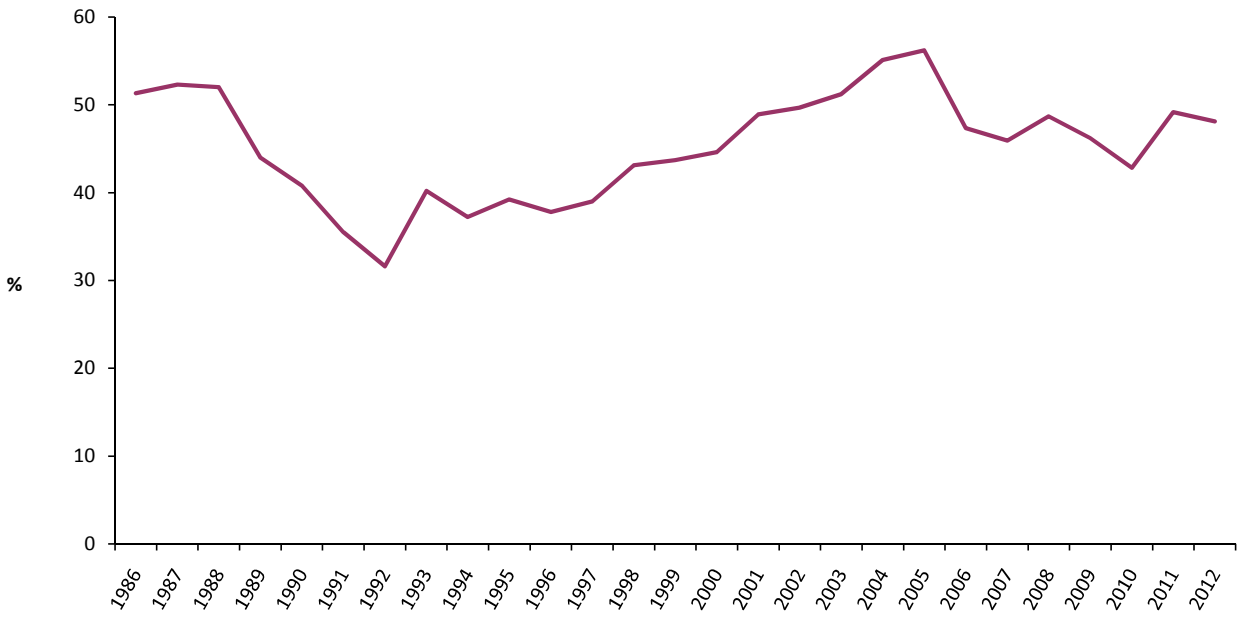
**Table 1.1 General Analysis, 1986 - 2012**

Year	All Arrivals	(000's)		% Room Occupancy	(000's)		% Sleeper Occupancy	Average Length Of Stay
		RNO	RNS		GNO	GNS		
1986	56,525	n/a	n/a	n/a	519	266	51.3	4.6
1987	64,349	n/a	n/a	n/a	535	278	52.3	4.3
1988	64,942	n/a	n/a	61.3	551	286	52.0	4.4
1989	67,934	n/a	n/a	53.3	501	220	44.0	3.2
1990	64,793	n/a	n/a	51.3	481	197	40.8	3.0
1991	43,193	n/a	n/a	50.6	502	178	35.5	4.1
1992	40,986	237	98	41.2	497	157	31.6	3.8
1993	39,123	195	94	48.4	391	157	40.2	4.0
1994	37,851	199	89	44.5	401	149	37.2	3.9
1995	45,056	192	88	46.1	369	144	39.2	3.2
1996	46,142	191	83	43.3	372	141	37.8	3.1
1997	48,420	190	90	47.3	370	144	39.0	3.0
1998	41,616	173	93	53.6	335	145	43.1	3.5
1999	42,031	179	99	55.3	351	154	43.7	3.7
2000	48,949	179	105	58.9	368	164	44.6	3.4
2001	53,776	179	115	64.2	366	179	48.9	3.3
2002	59,417	183	118	64.4	367	182	49.7	3.1
2003	61,743	186	119	64.2	367	188	51.2	3.0
2004	61,710	186	126	68.2	366	202	55.1	3.3
2005	58,796	177	122	68.6	349	196	56.2	3.3
2006	59,194	200	119	59.2	406	192	47.3	3.2
2007	63,691	220	127	57.8	434	200	45.9	3.1
2008	69,630	219	133	60.6	425	207	48.7	3.0
2009	64,691	214	123	57.4	416	192	46.2	3.0
2010	58,692	215	113	52.8	415	178	42.8	3.0
2011	60,615	209	126	60.0	402	198	49.2	3.3
2012	56,611	198	117	59.3	384	185	48.1	3.3

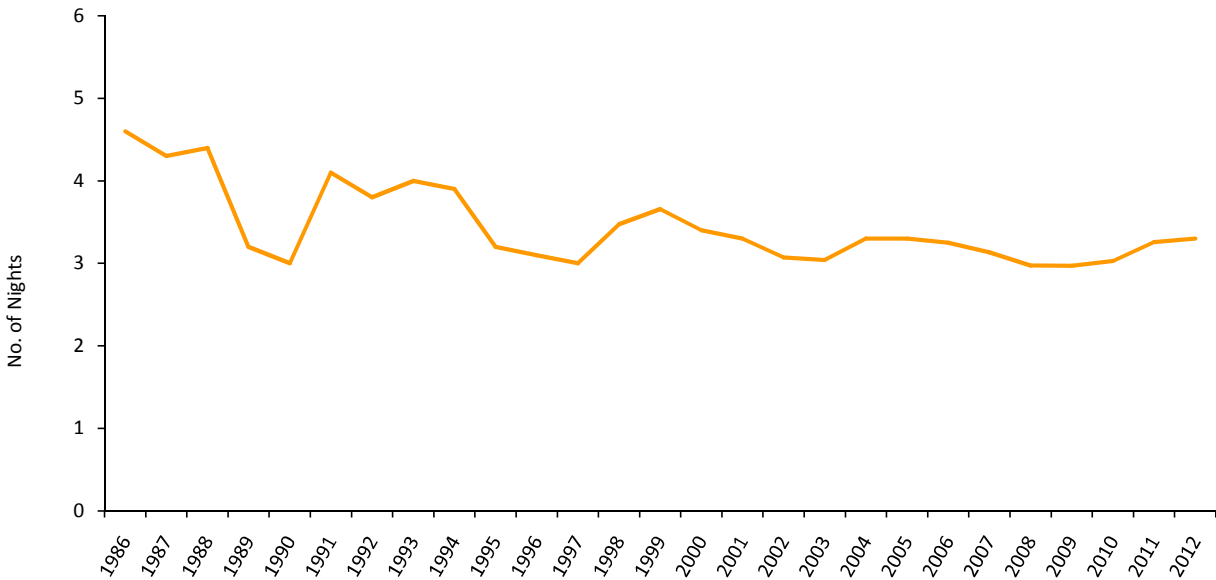
*Notes:**(i) RNO - Room Nights Offered.**(ii) RNS - Room Nights Sold.**(iii) GNO - Guest Nights Offered.**(iv) GNS - Guest Nights Sold.**(v) With effect from January 1992, hotels were required under the legislation to submit returns which included the % room occupancy figures. For the period 1988 to 1991, these figures were provided voluntarily by the hotels.*



Sleeper Occupancy Rates (All Arrivals), 1986 - 2012



Average Length of Stay (All Arrivals), 1986 - 2012



## 2: Room Nights Sold and Offered

**Table 2.1 Room Nights Sold (All Arrivals), 2006 - 2010**

	Room nights sold (000's)				
	2006	2007	2008	2009	2010
January	7.6	8.2	9.8	8.5	8.2
February	8.2	9.3	9.3	10.1	8.3
March	11.0	9.7	9.3	11.4	9.0
April	10.0	10.8	11.1	10.5	9.0
May	10.6	11.3	12.2	11.0	10.2
June	11.3	11.8	11.9	10.8	10.4
July	10.9	10.7	12.1	11.0	10.4
August	9.7	12.1	14.0	11.2	10.7
September	11.7	13.1	13.1	11.5	11.8
October	11.4	13.1	12.9	11.0	10.1
November	8.9	10.2	9.5	8.4	8.1
December	7.3	7.3	7.5	7.4	7.1
<b>Total</b>	<b>118.6</b>	<b>127.4</b>	<b>132.6</b>	<b>122.9</b>	<b>113.3</b>

**Table 2.2 Room Nights Offered (All Arrivals), 2006 - 2010**

	Room nights offered (000's)				
	2006	2007	2008	2009	2010
January	16.9	18.9	18.7	18.0	18.2
February	15.4	17.1	17.5	16.3	16.4
March	16.9	18.9	18.8	18.3	18.2
April	16.5	18.1	18.1	17.6	17.6
May	16.9	18.5	18.7	18.3	18.3
June	16.4	17.8	18.2	17.7	17.6
July	17.1	18.4	18.7	18.2	18.1
August	17.1	18.4	18.3	18.2	18.1
September	16.6	18.2	17.8	17.5	17.7
October	17.1	18.8	18.3	18.3	18.4
November	16.5	18.3	17.7	17.6	17.7
December	17.0	18.8	17.9	18.3	18.3
<b>Total</b>	<b>200.4</b>	<b>220.2</b>	<b>218.7</b>	<b>214.2</b>	<b>214.8</b>

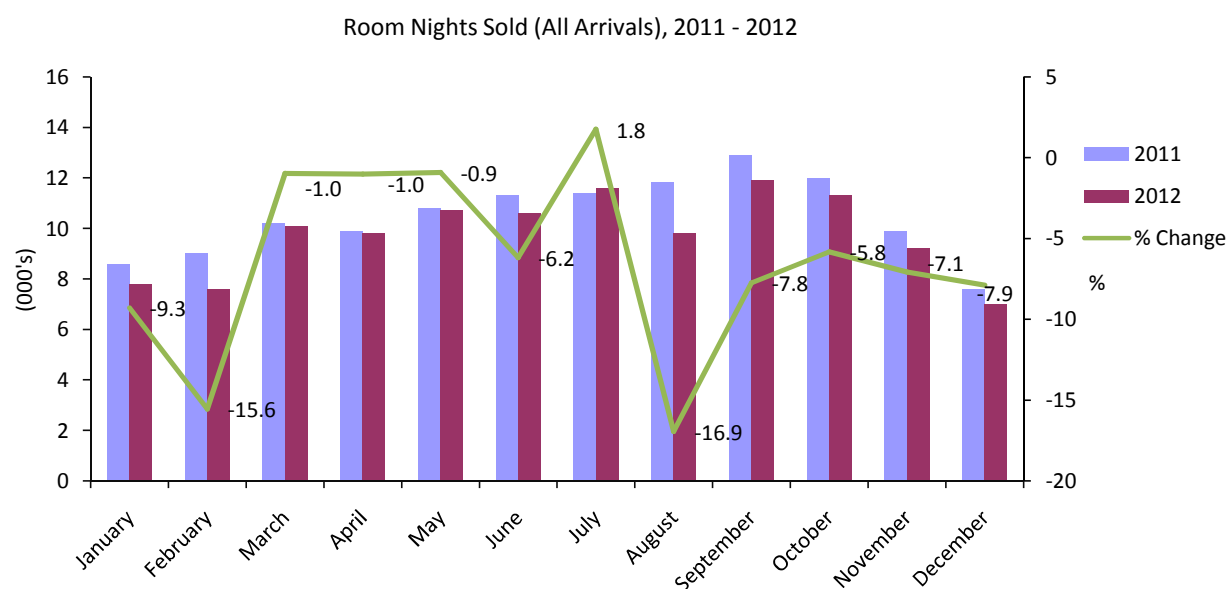
Note:

(i) Yearly totals have been rounded off and need not necessarily equal the sum of the rounded-off monthly figures.

## 2: Room Nights Sold and Offered

### Table 2.3 Room Nights Sold and Offered (All Arrivals), 2011 - 2012

	Room nights sold (000's)		Room nights offered (000's)	
	2011	2012	2011	2012
January	8.6	7.8	17.7	17.2
February	9.0	7.6	15.9	16.0
March	10.2	10.1	17.7	16.7
April	9.9	9.8	17.1	16.0
May	10.8	10.7	18.0	16.5
June	11.3	10.6	17.5	16.1
July	11.4	11.6	18.1	16.5
August	11.8	9.8	17.8	16.5
September	12.9	11.9	17.5	16.0
October	12.0	11.3	17.4	17.0
November	9.9	9.2	17.0	16.4
December	7.6	7.0	17.5	17.1
<b>Total</b>	<b>125.6</b>	<b>117.4</b>	<b>209.2</b>	<b>198.1</b>



Note:

(i) Yearly totals have been rounded off and need not necessarily equal the sum of the rounded off monthly figures.

## 2: Room Nights Sold and Offered

**Table 2.4 Room Nights Sold (Tourist Arrivals), 2006 - 2010**

	Room nights sold (000's)				
	2006	2007	2008	2009	2010
January	4.2	4.5	5.0	4.8	3.4
February	4.6	4.2	4.7	5.7	4.7
March	6.1	5.8	4.8	6.7	5.5
April	6.1	6.2	6.0	6.7	4.7
May	7.0	6.0	6.6	6.4	6.1
June	7.9	6.3	6.4	6.9	6.3
July	6.7	6.3	6.4	6.7	5.3
August	6.9	7.1	6.6	5.9	5.5
September	8.3	7.3	6.9	6.8	5.8
October	8.4	7.7	7.0	6.8	6.0
November	6.1	5.3	5.5	4.4	4.1
December	4.2	4.0	3.9	3.6	3.2
<b>Total</b>	<b>76.5</b>	<b>70.6</b>	<b>69.8</b>	<b>71.7</b>	<b>60.4</b>

**Table 2.5 Room Nights Offered (Tourist Arrivals), 2006 - 2010**

	Room nights offered (000's)				
	2006	2007	2008	2009	2010
January	16.9	18.9	18.7	18.0	18.2
February	15.4	17.1	17.5	16.3	16.4
March	16.9	18.9	18.8	18.3	18.2
April	16.5	18.1	18.1	17.6	17.6
May	16.9	18.5	18.7	18.3	18.3
June	16.4	17.8	18.2	17.7	17.6
July	17.1	18.4	18.7	18.2	18.1
August	17.1	18.4	18.3	18.2	18.1
September	16.6	18.2	17.8	17.5	17.7
October	17.1	18.8	18.3	18.3	18.4
November	16.5	18.3	17.7	17.6	17.7
December	17.0	18.8	17.9	18.3	18.3
<b>Total</b>	<b>200.4</b>	<b>220.2</b>	<b>218.7</b>	<b>214.2</b>	<b>214.8</b>

*Note:*

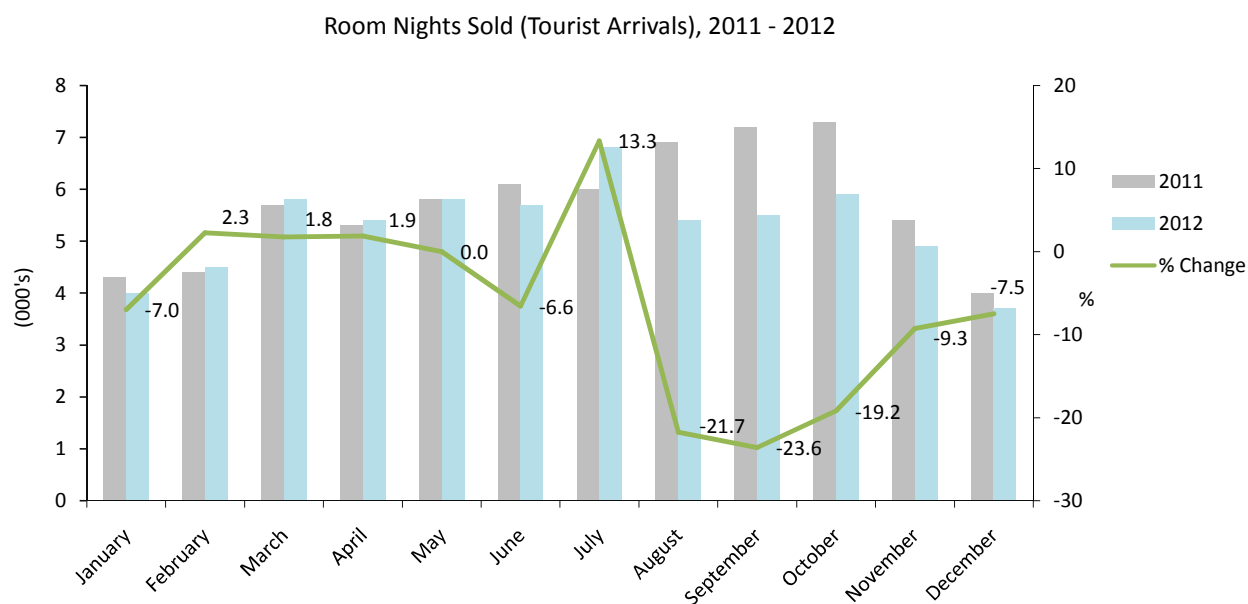
(i) Yearly totals have been rounded off and need not necessarily equal the sum of the rounded off monthly figures.



2: Room Nights Sold and Offered

**Table 2.6 Room Nights Sold and Offered (Tourist Arrivals), 2011 - 2012**

	Room nights sold (000's)		Room nights offered (000's)	
	2011	2012	2011	2012
January	4.3	4.0	17.7	17.2
February	4.4	4.5	15.9	16.0
March	5.7	5.8	17.7	16.7
April	5.3	5.4	17.1	16.0
May	5.8	5.8	18.0	16.5
June	6.1	5.7	17.5	16.1
July	6.0	6.8	18.1	16.5
August	6.9	5.4	17.8	16.5
September	7.2	5.5	17.5	16.0
October	7.3	5.9	17.4	17.0
November	5.4	4.9	17.0	16.4
December	4.0	3.7	17.5	17.1
<b>Total</b>	<b>68.5</b>	<b>63.3</b>	<b>209.2</b>	<b>198.1</b>



Note:

(i) Yearly totals have been rounded off and need not necessarily equal the sum of the rounded off monthly figures.

## 3: Room Occupancy Rates

**Table 3.1 Room Occupancy Rates (All Arrivals), 2002 - 2006**

	Room occupancy rates (%)				
	2002	2003	2004	2005	2006
January	42.3	46.7	48.9	54.3	45.1
February	56.6	58.7	58.6	79.2	53.0
March	62.4	66.8	71.3	66.2	65.1
April	61.1	66.4	61.3	73.2	60.3
May	67.6	68.4	69.8	73.6	62.6
June	72.0	76.6	75.9	75.3	68.6
July	71.4	66.3	73.0	68.3	64.0
August	67.0	63.9	75.0	70.0	56.7
September	84.0	79.1	87.4	80.0	70.8
October	72.9	71.1	73.9	82.2	66.7
November	66.9	64.1	69.2	62.0	54.0
December	47.9	43.1	52.2	43.7	42.9
<b>Total</b>	<b>64.4</b>	<b>64.2</b>	<b>68.2</b>	<b>68.6</b>	<b>59.2</b>

**Table 3.2 Room Occupancy Rates (Tourist Arrivals), 2002 - 2006**

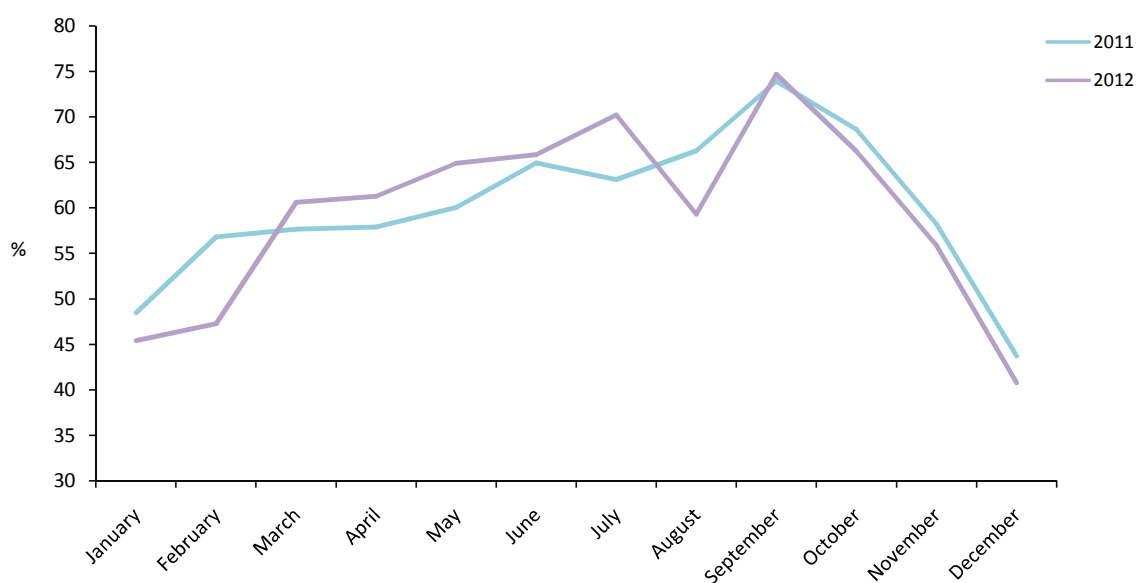
	Room occupancy rates (%)				
	2002	2003	2004	2005	2006
January	25.4	27.2	28.6	32.5	24.7
February	35.1	31.3	36.5	49.5	29.9
March	43.3	40.9	43.8	42.2	35.8
April	41.2	37.9	39.8	48.9	36.9
May	45.5	40.5	46.1	50.7	41.7
June	40.8	45.5	45.5	54.6	47.8
July	47.1	40.9	46.9	42.5	39.4
August	44.8	42.5	48.8	46.1	40.5
September	56.8	53.6	59.8	53.0	50.3
October	44.9	47.1	50.6	55.0	48.8
November	36.6	40.3	44.2	36.5	36.8
December	28.8	25.1	33.2	24.8	24.9
<b>Total</b>	<b>40.9</b>	<b>39.4</b>	<b>43.7</b>	<b>44.4</b>	<b>38.2</b>

### 3: Room Occupancy Rates

**Table 3.3 Room Occupancy Rates (All Arrivals), 2007 - 2012**

	Room occupancy rates (%)					
	2007	2008	2009	2010	2011	2012
January	43.3	52.3	47.3	45.2	48.5	45.4
February	54.4	52.9	62.1	50.4	56.8	47.3
March	51.3	49.7	62.3	49.3	57.7	60.6
April	59.4	61.2	59.8	51.2	57.9	61.3
May	61.0	65.1	60.5	56.1	60.1	64.9
June	66.2	65.4	61.1	58.8	64.9	65.9
July	58.1	64.4	60.5	57.2	63.1	70.2
August	65.8	76.2	61.8	58.8	66.3	59.3
September	71.9	73.5	65.6	66.5	73.9	74.7
October	69.3	70.7	60.0	55.0	68.7	66.3
November	55.4	53.9	47.8	45.8	58.3	55.9
December	38.8	41.9	40.3	39.1	43.7	40.8
<b>Total</b>	<b>57.8</b>	<b>60.6</b>	<b>57.4</b>	<b>52.8</b>	<b>60.0</b>	<b>59.3</b>

Room Occupancy Rates (All Arrivals), 2011 - 2012



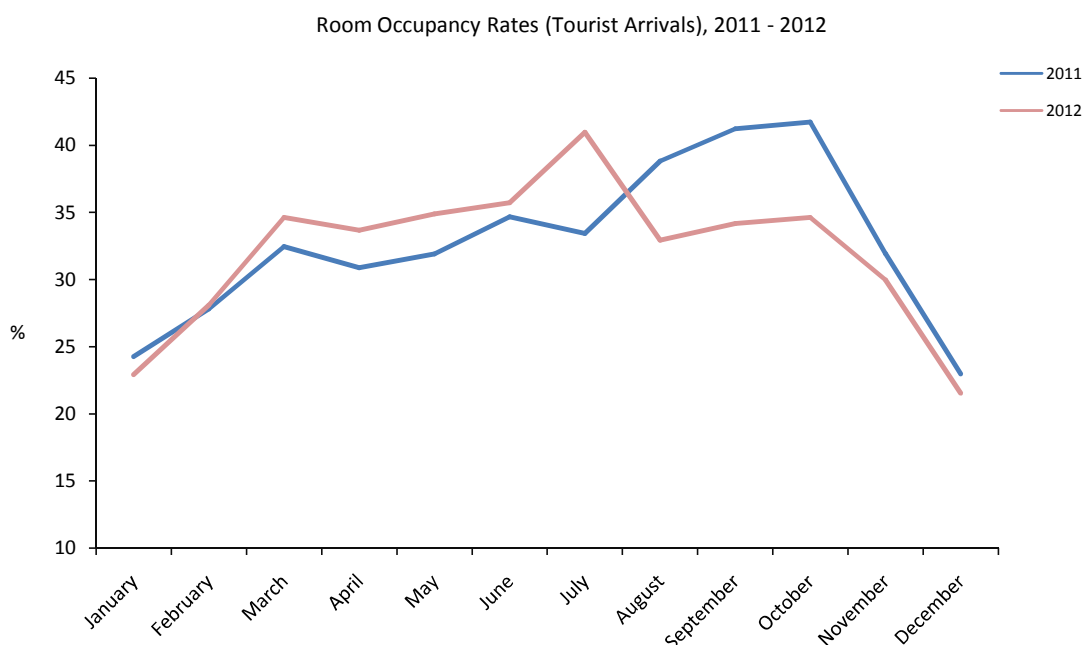
**Note:**

(i) Yearly totals have been rounded off and need not necessarily equal the sum of the rounded off monthly figures.

3: Room Occupancy Rates

**Table 3.4 Room Occupancy Rates (Tourist Arrivals), 2007 - 2012**

	Room occupancy rates (%)					
	2007	2008	2009	2010	2011	2012
January	23.9	26.6	27.0	18.5	24.3	22.9
February	24.8	26.7	35.2	28.4	27.8	28.1
March	30.8	25.7	36.9	29.9	32.5	34.6
April	34.0	33.3	37.9	26.6	30.9	33.7
May	32.2	35.2	35.2	33.2	31.9	34.9
June	35.4	35.4	38.9	35.5	34.7	35.7
July	34.4	33.9	37.0	29.2	33.5	41.0
August	38.3	35.8	32.6	30.2	38.8	32.9
September	40.0	38.8	39.0	32.8	41.2	34.2
October	40.7	38.3	37.2	32.5	41.7	34.6
November	29.1	30.9	25.2	23.2	31.9	30.0
December	21.3	22.0	19.7	17.6	23.0	21.6
<b>Total</b>	<b>32.1</b>	<b>31.9</b>	<b>33.5</b>	<b>28.1</b>	<b>32.7</b>	<b>32.0</b>



Note:

(i) Yearly totals have been rounded off and need not necessarily equal the sum of the rounded off monthly figures.

## 4: Number of Arrivals

**Table 4.1 Number of Arrivals (All Arrivals), 1986 - 1992**

	Number of arrivals by month (000's)						
	1986	1987	1988	1989	1990	1991	1992
January	3.1	4.1	4.6	3.4	3.4	3.4	2.3
February	4.0	4.6	4.7	4.3	4.1	3.4	3.0
March	4.6	6.3	6.3	5.2	7.9	3.9	3.4
April	4.4	6.2	6.1	5.3	8.4	3.6	3.6
May	5.7	5.8	6.0	4.6	6.0	4.2	4.0
June	5.1	5.1	5.8	5.0	5.3	3.2	4.1
July	4.5	4.4	5.4	6.6	6.3	3.9	3.8
August	5.2	5.1	5.3	5.9	4.6	3.5	3.6
September	5.5	6.2	5.8	7.4	5.8	4.3	4.1
October	5.0	5.3	4.9	7.7	5.0	4.7	3.9
November	4.9	6.0	5.8	6.7	4.1	2.6	2.8
December	4.6	5.2	4.2	5.8	3.9	2.5	2.4
<b>Total</b>	<b>56.6</b>	<b>64.3</b>	<b>64.9</b>	<b>67.9</b>	<b>64.8</b>	<b>43.2</b>	<b>41.0</b>

**Table 4.2 Number of Arrivals (Tourist Arrivals), 1986 - 1992**

	Number of arrivals by month (000's)						
	1986	1987	1988	1989	1990	1991	1992
January	2.4	3.7	3.2	2.4	2.0	1.9	1.6
February	2.9	3.5	3.6	3.5	2.4	1.9	2.2
March	3.8	5.0	4.7	4.1	3.0	2.3	2.7
April	3.6	5.0	4.8	4.1	3.4	2.1	2.8
May	4.0	3.8	4.6	3.6	2.8	2.4	2.9
June	3.9	3.5	4.0	4.2	2.3	2.1	2.8
July	3.4	3.6	3.6	3.9	3.1	2.5	2.6
August	4.0	4.1	3.6	4.1	2.5	2.4	2.9
September	4.4	4.8	3.8	4.4	3.1	2.4	2.6
October	4.2	4.8	3.6	5.3	2.6	2.5	2.7
November	4.3	4.8	3.6	4.4	2.1	1.6	2.0
December	2.9	3.4	2.6	3.5	2.0	1.7	1.9
<b>Total</b>	<b>43.8</b>	<b>50.0</b>	<b>45.7</b>	<b>47.5</b>	<b>31.3</b>	<b>26.0</b>	<b>29.9</b>

*Note:*

(i) Yearly totals have been rounded off and need not necessarily equal the sum of the rounded off monthly figures.

## 4: Number of Arrivals

**Table 4.3 Number of Arrivals (All Arrivals), 1993 - 1999**

	Number of arrivals by month (000's)						
	1993	1994	1995	1996	1997	1998	1999
January	1.9	2.5	2.0	2.8	2.4	3.0	2.6
February	2.4	2.4	2.8	3.4	3.2	2.8	2.6
March	2.9	3.1	3.4	4.0	3.3	3.1	3.6
April	3.0	3.1	4.0	4.1	3.9	3.4	3.7
May	3.8	3.9	3.8	4.2	4.8	3.8	3.6
June	3.5	3.3	3.9	4.1	4.7	3.5	3.8
July	3.3	3.4	4.6	3.8	4.3	3.4	3.4
August	3.3	3.3	4.4	3.9	5.5	4.2	4.3
September	4.4	4.3	5.7	4.7	5.4	4.0	4.2
October	4.5	3.9	4.1	4.3	3.9	4.2	4.3
November	3.5	2.5	3.1	3.3	3.8	3.6	3.7
December	2.5	2.2	3.2	3.5	3.2	2.8	2.4
<b>Total</b>	<b>39.1</b>	<b>37.9</b>	<b>45.1</b>	<b>46.1</b>	<b>48.4</b>	<b>41.6</b>	<b>42.1</b>

**Table 4.4 Number of Arrivals (Tourist Arrivals), 1993 - 1999**

	Number of arrivals by month (000's)						
	1993	1994	1995	1996	1997	1998	1999
January	1.5	1.7	1.6	2.0	1.5	1.6	1.7
February	1.5	1.7	2.2	2.5	1.9	1.7	1.7
March	2.1	2.1	2.4	2.7	1.9	2.1	2.3
April	2.1	2.1	2.8	3.0	2.2	2.3	2.3
May	2.6	2.4	2.6	2.6	2.8	2.5	2.5
June	2.4	2.3	2.7	2.6	2.7	2.4	2.5
July	2.2	2.4	3.3	2.7	2.8	2.3	2.2
August	2.5	2.3	3.1	3.0	3.3	3.0	2.8
September	2.9	2.9	4.1	3.0	3.1	3.0	2.7
October	2.9	2.7	3.2	3.1	2.8	2.9	3.0
November	2.3	1.7	2.5	2.2	2.0	2.4	2.3
December	1.9	1.6	2.5	2.5	1.9	1.8	1.7
<b>Total</b>	<b>27.0</b>	<b>25.9</b>	<b>33.1</b>	<b>31.9</b>	<b>28.9</b>	<b>27.9</b>	<b>27.7</b>

Note:

(i) Yearly totals have been rounded off and need not necessarily equal the sum of the rounded off monthly figures.

## 4: Number of Arrivals

**Table 4.5 Number of Arrivals (All Arrivals), 2000 - 2006**

	Number of arrivals by month (000's)						
	2000	2001	2002	2003	2004	2005	2006
January	2.2	3.1	3.2	3.7	3.8	4.0	4.3
February	2.8	3.3	4.1	4.4	4.4	4.6	4.5
March	3.9	4.5	4.6	5.4	5.5	5.0	5.5
April	4.2	4.3	4.5	5.0	4.7	5.1	5.3
May	4.8	5.0	5.1	5.6	5.7	5.7	5.7
June	4.8	5.0	4.3	5.9	5.5	5.1	5.5
July	4.0	5.0	5.8	5.2	5.3	5.0	5.0
August	4.6	5.3	5.8	5.9	5.6	5.5	4.5
September	5.6	5.4	6.6	5.8	6.2	5.7	5.4
October	4.8	5.1	6.2	5.6	5.6	5.3	5.4
November	3.9	4.3	5.1	5.4	5.4	4.4	4.4
December	3.3	3.5	4.1	3.9	3.9	3.7	3.8
<b>Total</b>	<b>48.9</b>	<b>53.8</b>	<b>59.4</b>	<b>61.8</b>	<b>61.7</b>	<b>58.8</b>	<b>59.2</b>

**Table 4.6 Number of Arrivals (Tourist Arrivals), 2000 - 2006**

	Number of arrivals by month (000's)						
	2000	2001	2002	2003	2004	2005	2006
January	1.5	2.3	2.3	2.3	2.7	2.8	2.5
February	1.9	2.4	3.0	2.9	3.0	3.3	2.6
March	2.8	3.2	3.5	3.6	3.8	3.7	3.6
April	3.0	3.1	3.2	3.2	3.4	3.6	3.6
May	3.5	3.5	3.8	3.5	4.4	4.3	4.2
June	3.6	3.4	3.0	3.7	3.8	3.8	3.9
July	2.9	3.7	4.0	3.5	3.9	3.5	3.2
August	3.5	4.1	4.1	4.1	4.2	4.0	3.2
September	4.1	4.1	4.7	4.0	4.6	4.1	3.8
October	3.6	3.8	4.0	3.9	4.1	3.8	3.9
November	2.9	3.4	3.3	3.5	3.8	2.7	3.0
December	2.4	2.5	2.7	2.6	2.8	2.2	2.2
<b>Total</b>	<b>35.9</b>	<b>39.4</b>	<b>41.5</b>	<b>40.8</b>	<b>44.5</b>	<b>41.9</b>	<b>39.8</b>

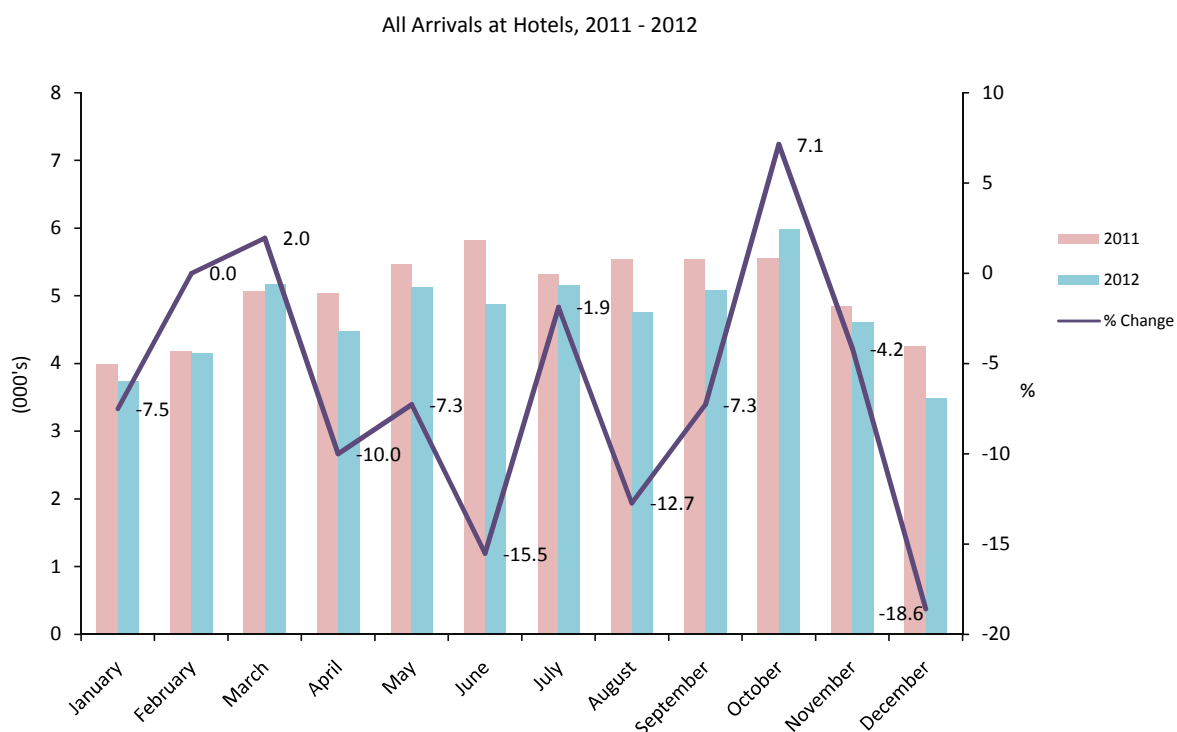
*Note:*

(i) Yearly totals have been rounded off and need not necessarily equal the sum of the rounded off monthly figures.

4: Number of Arrivals

**Table 4.7 Number of Arrivals (All Arrivals), 2007 - 2012**

	Number of arrivals (000's)					
	2007	2008	2009	2010	2011	2012
January	3.9	5.0	4.7	3.8	4.0	3.7
February	4.1	5.1	5.3	4.2	4.2	4.2
March	4.6	5.4	5.8	5.4	5.1	5.2
April	5.0	6.1	6.0	4.9	5.0	4.5
May	5.9	6.9	5.6	5.7	5.5	5.1
June	5.7	5.7	5.7	5.4	5.8	4.9
July	5.4	6.4	5.7	5.3	5.3	5.2
August	6.3	7.1	5.7	4.9	5.5	4.8
September	6.3	6.5	5.6	5.4	5.5	5.1
October	6.8	6.4	5.7	5.7	5.6	6.0
November	5.5	4.9	4.9	4.2	4.8	4.6
December	4.3	4.3	4.1	3.8	4.3	3.5
<b>Total</b>	<b>63.7</b>	<b>69.6</b>	<b>64.7</b>	<b>58.7</b>	<b>60.6</b>	<b>56.6</b>



Note:

(i) Yearly totals have been rounded off and need not necessarily equal the sum of the rounded off monthly figures.



4: Number of Arrivals

**Table 4.8 Number of Arrivals (Tourist Arrivals), 2007 - 2012**

	Number of arrivals (000's)					
	2007	2008	2009	2010	2011	2012
January	2.4	3.2	3.1	2.3	2.7	2.4
February	2.3	3.0	3.8	3.1	2.8	2.9
March	3.1	3.5	4.4	3.6	3.4	3.5
April	3.1	4.1	4.0	3.0	3.2	3.0
May	3.4	4.2	3.9	3.5	3.6	3.6
June	3.7	3.8	4.1	3.6	3.7	3.8
July	3.6	4.3	4.0	3.3	3.6	3.7
August	3.8	3.8	3.6	3.2	4.0	3.5
September	4.0	4.0	3.9	3.4	3.8	3.4
October	4.6	4.1	4.1	3.9	4.0	3.9
November	3.5	3.5	3.2	2.5	3.3	3.0
December	2.3	2.5	2.4	2.1	2.5	2.1
<b>Total</b>	<b>39.8</b>	<b>44.0</b>	<b>44.5</b>	<b>37.5</b>	<b>40.8</b>	<b>38.9</b>



Note:

(i) Yearly totals have been rounded off and need not necessarily equal the sum of the rounded off monthly figures.

## 5: Guest Nights Sold/Offered, Sleeper Occupancy Rates, (All Arrivals)

**Table 5.1 Guest Nights Sold/Offered, Sleeper Occupancy Rates, 1986 - 1989**

	Guest nights sold (000's)				Guest nights offered (000's)				Sleeper occupancy rates (%)			
	1986	1987	1988	1989	1986	1987	1988	1989	1986	1987	1988	1989
January	13	19	16	15	43	46	46	42	30.1	42.1	35.8	35.2
February	15	18	19	18	38	42	44	40	39.0	43.9	42.6	46.0
March	21	26	26	22	43	46	48	42	48.7	57.5	53.6	52.0
April	18	24	26	23	42	43	45	42	42.0	55.6	57.1	54.8
May	25	25	26	19	45	45	47	44	57.2	55.7	55.1	41.9
June	29	22	29	19	43	44	47	43	67.9	49.1	61.6	43.9
July	23	20	27	20	44	45	48	43	51.8	44.5	55.8	46.8
August	27	26	24	19	46	45	48	43	59.7	57.7	50.4	45.1
September	29	29	26	19	44	45	44	42	64.8	65.6	60.4	46.0
October	26	26	26	19	45	44	46	40	59.3	58.8	56.4	46.2
November	23	24	22	14	43	44	43	38	54.1	54.4	51.4	38.2
December	17	20	19	13	44	46	45	42	38.5	42.5	42.6	31.2
<b>Total</b>	<b>266</b>	<b>279</b>	<b>286</b>	<b>220</b>	<b>520</b>	<b>535</b>	<b>551</b>	<b>501</b>	<b>51.3</b>	<b>52.3</b>	<b>52.0</b>	<b>44.0</b>

**Table 5.2 Guest Nights Sold/Offered, Sleeper Occupancy Rates, 1990 - 1993**

	Guest nights sold (000's)				Guest nights offered (000's)				Sleeper occupancy rates (%)			
	1990	1991	1992	1993	1990	1991	1992	1993	1990	1991	1992	1993
January	11	12	9	7	37	40	42	33	31.2	29.4	20.6	21.5
February	14	13	9	9	37	37	41	30	37.3	34.5	22.8	30.1
March	19	17	14	12	42	44	46	33	45.3	37.5	29.6	36.2
April	23	14	14	12	41	41	42	32	55.4	34.0	32.6	38.3
May	21	17	15	16	42	41	43	34	50.4	40.2	35.6	45.6
June	15	16	16	15	39	44	47	32	37.3	35.8	34.8	48.0
July	18	16	16	14	42	43	45	32	43.8	37.9	35.2	41.8
August	15	16	14	14	41	40	44	33	35.2	41.2	32.2	44.0
September	18	17	16	18	41	44	41	32	44.4	39.2	39.7	56.2
October	18	18	15	17	40	43	42	34	44.5	42.5	34.6	50.9
November	12	13	10	13	40	41	32	32	30.2	31.1	32.6	39.4
December	13	10	9	10	39	45	33	33	32.4	22.4	27.0	29.6
<b>Total</b>	<b>197</b>	<b>178</b>	<b>157</b>	<b>157</b>	<b>481</b>	<b>502</b>	<b>497</b>	<b>391</b>	<b>40.8</b>	<b>35.5</b>	<b>31.6</b>	<b>40.2</b>

*Note:*

(i) Yearly totals have been rounded off and need not necessarily equal the sum of the rounded off monthly figures.

## 5: Guest Nights Sold/Offered, Sleeper Occupancy Rates, (All Arrivals)

**Table 5.3 Guest Nights Sold/Offered, Sleeper Occupancy Rates, 1994 - 1997**

	Guest nights sold (000's)				Guest nights offered (000's)				Sleeper occupancy rates (%)			
	1994	1995	1996	1997	1994	1995	1996	1997	1994	1995	1996	1997
January	10	6	8	8	34	32	32	31	29.4	19.0	24.9	24.1
February	9	10	9	10	30	28	30	29	31.3	34.9	29.9	34.1
March	12	10	12	10	33	31	32	31	37.2	33.4	36.3	33.0
April	12	13	12	11	31	25	31	31	39.2	49.5	39.1	36.3
May	15	13	14	14	35	31	32	32	42.5	41.4	43.0	45.0
June	14	14	13	13	33	30	30	30	40.6	46.3	37.2	44.4
July	15	15	12	14	35	32	31	31	42.4	48.2	39.0	44.1
August	13	15	13	16	35	32	31	31	37.0	46.2	42.3	51.3
September	16	18	16	16	33	31	31	31	48.9	58.0	51.9	50.7
October	15	13	13	14	35	32	31	31	43.9	41.1	42.8	44.1
November	9	9	10	10	33	31	30	31	27.8	28.1	31.3	31.7
December	9	9	9	9	34	32	31	31	25.2	26.7	29.0	28.2
<b>Total</b>	<b>149</b>	<b>144</b>	<b>141</b>	<b>144</b>	<b>401</b>	<b>369</b>	<b>372</b>	<b>370</b>	<b>37.2</b>	<b>39.2</b>	<b>37.8</b>	<b>39.0</b>

**Table 5.4 Guest Nights Sold/Offered, Sleeper Occupancy Rates, 1998 - 2001**

	Guest nights sold (000's)				Guest nights offered (000's)				Sleeper occupancy rates (%)			
	1998	1999	2000	2001	1998	1999	2000	2001	1998	1999	2000	2001
January	7	8	6	8	30	29	31	31	24.8	28.8	20.0	27.0
February	9	9	9	11	25	26	29	28	35.4	34.2	30.4	40.0
March	11	13	12	15	28	29	31	31	38.8	45.5	37.5	47.9
April	11	13	14	15	26	29	30	30	42.4	44.3	45.0	48.4
May	12	13	19	17	27	29	31	31	45.6	43.7	60.3	55.0
June	13	14	17	18	28	29	30	30	45.9	49.1	56.6	58.3
July	13	13	16	17	29	29	31	31	43.9	44.5	50.2	53.5
August	16	16	16	18	29	29	31	31	54.4	56.3	51.8	57.4
September	17	16	19	20	28	29	31	30	59.8	56.9	61.7	64.6
October	15	15	15	18	29	31	31	31	50.2	50.0	48.7	57.3
November	12	14	12	13	28	30	30	30	43.8	46.0	38.9	43.5
December	9	8	11	11	29	31	31	31	32.2	25.6	34.1	34.1
<b>Total</b>	<b>144</b>	<b>154</b>	<b>164</b>	<b>179</b>	<b>336</b>	<b>351</b>	<b>368</b>	<b>366</b>	<b>43.1</b>	<b>43.8</b>	<b>44.6</b>	<b>48.9</b>

*Note:*

(i) Yearly totals have been rounded off and need not necessarily equal the sum of the rounded off monthly figures.

## 5: Guest Nights Sold/Offered, Sleeper Occupancy Rates, (All Arrivals)

**Table 5.5 Guest Nights Sold/Offered, Sleeper Occupancy Rates, 2002 - 2005**

	Guest nights sold (000's)				Guest nights offered (000's)				Sleeper occupancy rates (%)			
	2002	2003	2004	2005	2002	2003	2004	2005	2002	2003	2004	2005
January	9	10	11	12	31	31	29	31	30.5	33.1	36.7	38.7
February	12	13	13	15	28	28	29	27	42.9	45.5	45.2	58.0
March	15	16	17	15	31	31	31	29	47.7	51.8	56.3	52.8
April	14	15	15	17	30	30	30	28	46.3	51.1	50.0	59.3
May	16	17	18	18	31	31	31	30	51.3	54.4	57.8	60.4
June	13	18	18	18	30	30	30	28	43.6	60.9	59.4	64.5
July	18	16	19	16	31	31	31	29	56.8	53.2	61.2	57.1
August	18	18	21	18	31	31	31	29	58.8	58.2	65.9	62.0
September	21	20	22	20	30	30	31	28	69.3	64.8	71.7	70.1
October	19	18	19	20	31	31	31	29	61.3	57.0	60.1	68.5
November	15	15	17	15	30	30	30	29	50.9	49.5	55.0	52.6
December	11	11	13	11	31	31	31	32	36.4	34.6	40.1	33.7
<b>Total</b>	<b>182</b>	<b>188</b>	<b>202</b>	<b>196</b>	<b>367</b>	<b>367</b>	<b>366</b>	<b>349</b>	<b>49.7</b>	<b>51.2</b>	<b>55.1</b>	<b>56.2</b>

**Table 5.6 Guest Nights Sold/Offered, Sleeper Occupancy Rates, 2006 - 2009**

	Guest nights sold (000's)				Guest nights offered (000's)				Sleeper occupancy rates (%)			
	2006	2007	2008	2009	2006	2007	2008	2009	2006	2007	2008	2009
January	12	12	14	13	34	38	36	35	34.2	31.3	39.0	36.4
February	13	14	14	15	31	35	34	32	41.2	41.7	39.5	47.5
March	17	15	14	17	34	38	37	36	49.5	39.0	38.9	48.8
April	16	17	18	17	33	37	35	34	49.3	46.8	49.7	48.3
May	17	16	19	18	34	36	37	35	50.7	45.5	52.4	50.0
June	18	18	19	17	33	35	35	34	55.4	51.2	53.1	49.1
July	19	17	19	18	35	36	36	35	54.0	48.2	53.1	50.1
August	17	20	23	19	35	36	36	35	49.3	56.7	64.0	54.8
September	20	21	21	19	34	35	35	34	57.9	59.7	61.3	54.5
October	18	21	21	17	35	37	36	35	52.7	58.2	57.7	48.8
November	14	16	14	12	34	36	34	34	40.7	43.5	42.0	35.1
December	12	11	12	11	35	37	35	35	33.7	30.9	33.6	31.4
<b>Total</b>	<b>193</b>	<b>200</b>	<b>207</b>	<b>192</b>	<b>406</b>	<b>434</b>	<b>425</b>	<b>416</b>	<b>47.3</b>	<b>45.9</b>	<b>48.7</b>	<b>46.2</b>

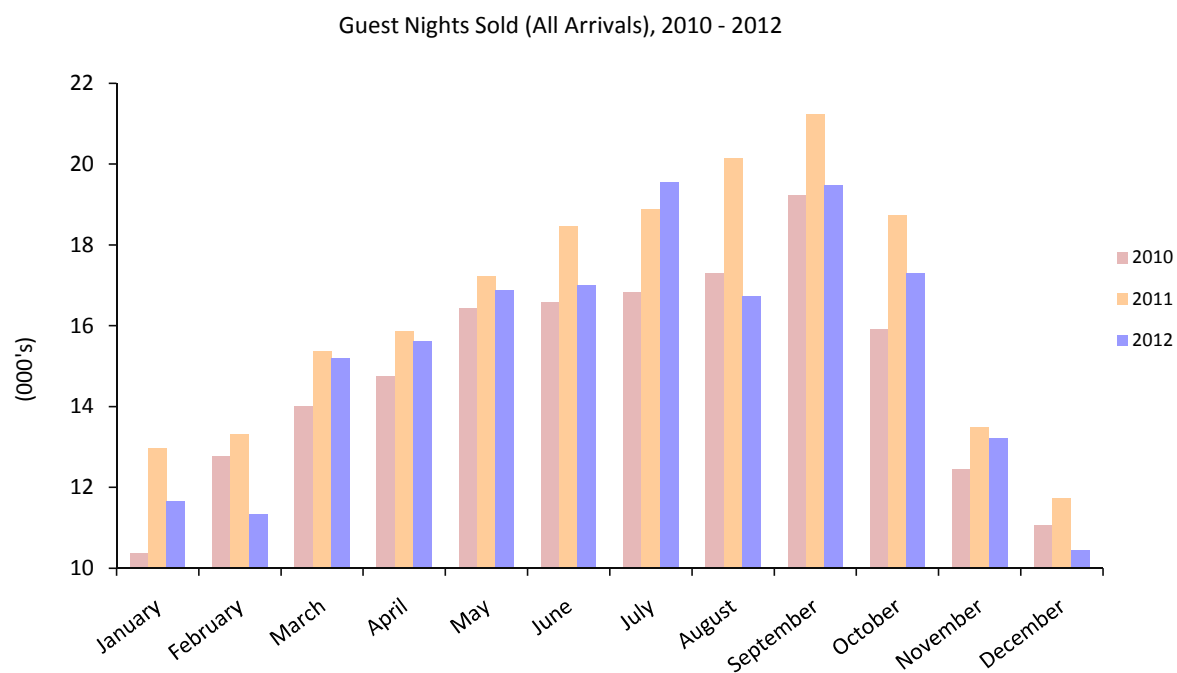
Note:

(i) Yearly totals have been rounded off and need not necessarily equal the sum of the rounded off monthly figures.

5: Guest Nights Sold/Offered, Sleeper Occupancy Rates, (All Arrivals)

**Table 5.7 Guest Nights Sold, 2010 - 2012**

	Guest nights sold (000's)		
	2010	2011	2012
January	10.4	13.0	11.7
February	12.8	13.3	11.3
March	14.0	15.4	15.2
April	14.8	15.9	15.6
May	16.4	17.2	16.9
June	16.6	18.5	17.0
July	16.8	18.9	19.6
August	17.3	20.2	16.7
September	19.2	21.2	19.5
October	15.9	18.7	17.3
November	12.5	13.5	13.2
December	11.1	11.7	10.5
<b>Total</b>	<b>177.8</b>	<b>197.5</b>	<b>184.5</b>



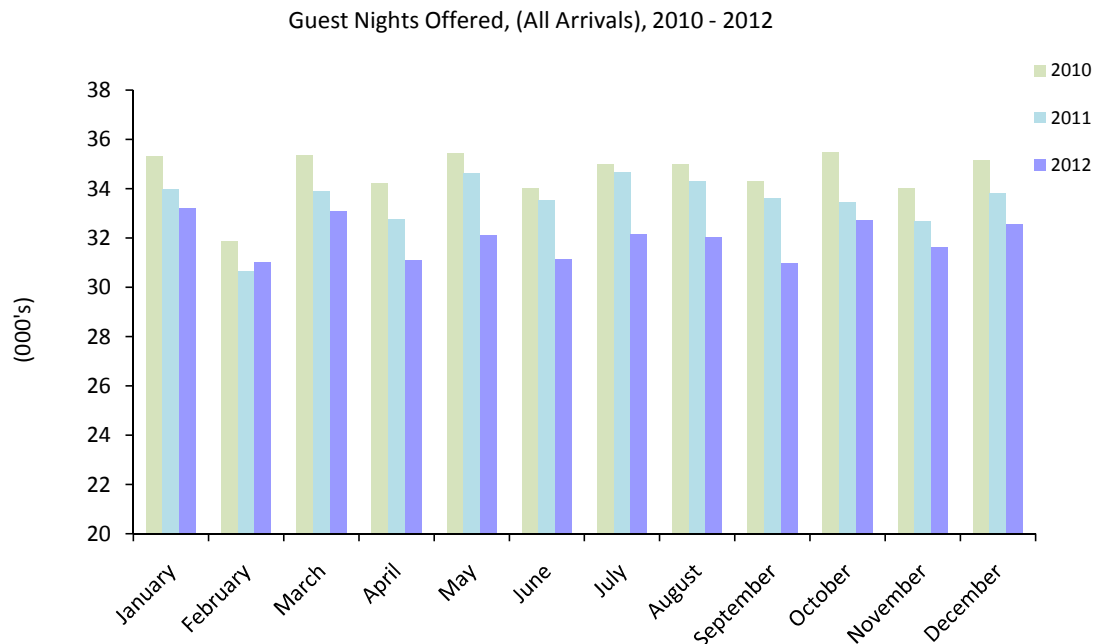
*Note:*

(i) Yearly totals have been rounded off and need not necessarily equal the sum of the rounded off monthly figures.

5: Guest Nights Sold/Offered, Sleeper Occupancy Rates, (All Arrivals)

**Table 5.8 Guest Nights Offered, 2010 - 2012**

	Guest nights offered (000's)		
	2010	2011	2012
January	35.3	34.0	33.2
February	31.9	30.6	31.0
March	35.4	33.9	33.1
April	34.2	32.8	31.1
May	35.4	34.6	32.1
June	34.0	33.5	31.1
July	35.0	34.7	32.1
August	35.0	34.3	32.0
September	34.3	33.6	31.0
October	35.5	33.4	32.7
November	34.0	32.7	31.6
December	35.2	33.8	32.5
<b>Total</b>	<b>415.0</b>	<b>401.8</b>	<b>383.6</b>



Note:

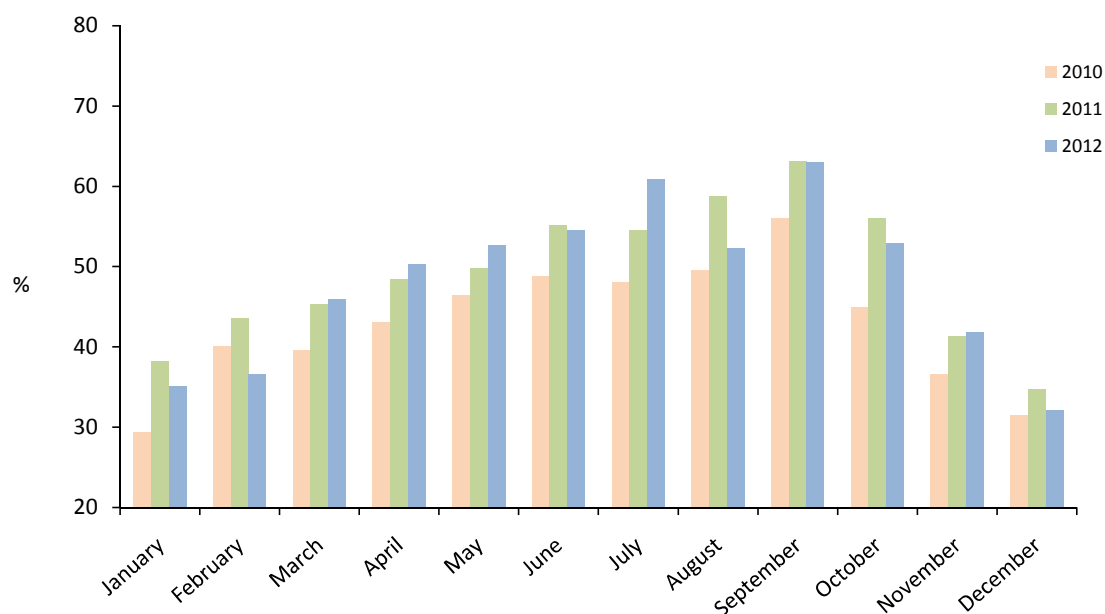
(i) Yearly totals have been rounded off and need not necessarily equal the sum of the rounded off monthly figures.

5: Guest Nights Sold/Offered, Sleeper Occupancy rates, (All Arrivals)

**Table 5.9 Sleeper Occupancy Rates, 2010 - 2012**

Sleeper occupancy rates (%)			
	2010	2011	2012
January	29.4	38.2	35.2
February	40.1	43.5	36.6
March	39.6	45.4	46.0
April	43.1	48.5	50.3
May	46.4	49.7	52.6
June	48.8	55.1	54.6
July	48.1	54.5	60.9
August	49.5	58.8	52.3
September	56.1	63.2	62.9
October	44.9	56.1	52.9
November	36.7	41.3	41.8
December	31.5	34.8	32.1
<b>Total</b>	<b>42.8</b>	<b>49.2</b>	<b>48.1</b>

% Sleeper Occupancy Rates, (All Arrivals), 2010 - 2012



Note:

(i) Yearly totals have been rounded off and need not necessarily equal the sum of the rounded off monthly figures.

## 6: Guest Nights Sold/Offered, Sleeper Occupancy Rates, (Tourist Arrivals)

**Table 6.1 Guest Nights Sold/Offered, Sleeper Occupancy Rates, 1986 - 1989**

	Guest nights sold (000's)				Guest nights offered (000's)				Sleeper occupancy rates (%)			
	1986	1987	1988	1989	1986	1987	1988	1989	1986	1987	1988	1989
January	10	15	13	10	43	46	46	42	22.1	33.6	27.5	23.7
February	12	15	14	13	38	42	44	40	31.0	34.8	32.2	33.4
March	16	21	19	15	43	46	48	42	38.1	46.3	39.8	36.2
April	13	19	20	16	42	43	45	42	30.7	44.9	44.8	37.0
May	19	18	19	12	45	45	47	44	41.9	38.6	40.3	27.9
June	23	16	20	14	43	44	47	43	52.8	36.9	43.5	32.7
July	18	15	19	13	44	45	48	43	41.0	34.3	39.2	30.6
August	21	19	17	13	46	45	48	43	46.3	42.5	34.5	30.6
September	21	22	17	12	44	45	44	42	48.1	49.7	37.8	29.8
October	20	21	17	14	45	44	46	40	45.3	46.4	37.9	34.0
November	18	18	14	11	43	44	43	38	41.7	41.8	32.5	27.6
December	12	14	11	9	44	46	45	42	27.5	29.8	24.3	21.7
<b>Total</b>	<b>203</b>	<b>213</b>	<b>200</b>	<b>152</b>	<b>520</b>	<b>535</b>	<b>551</b>	<b>501</b>	<b>38.6</b>	<b>40.0</b>	<b>36.2</b>	<b>30.4</b>

**Table 6.2 Guest Nights Sold/Offered, Sleeper Occupancy Rates, 1990 - 1993**

	Guest nights sold (000's)				Guest nights offered (000's)				Sleeper occupancy rates (%)			
	1990	1991	1992	1993	1990	1991	1992	1993	1990	1991	1992	1993
January	8	7	5	4	37	40	42	33	22.7	17.7	12.9	12.4
February	10	8	6	5	37	37	41	30	27.1	20.2	15.4	17.7
March	13	8	9	8	42	44	46	33	31.0	19.1	19.3	23.0
April	14	9	9	8	41	41	42	32	34.0	21.9	21.7	25.2
May	12	10	9	10	42	41	43	34	29.4	23.3	20.7	28.5
June	10	8	10	10	39	44	47	32	24.3	19.4	22.0	32.7
July	12	10	10	8	42	43	45	32	27.4	23.2	21.3	26.2
August	10	8	10	10	41	40	44	33	23.1	21.3	22.0	30.5
September	12	8	9	12	41	44	41	32	30.0	18.2	22.7	36.8
October	11	10	9	11	40	43	42	34	27.8	23.3	20.8	33.2
November	8	7	6	9	40	41	32	32	19.5	16.4	20.1	27.8
December	8	6	6	7	39	45	33	33	20.9	12.9	17.5	21.8
<b>Total</b>	<b>128</b>	<b>99</b>	<b>98</b>	<b>103</b>	<b>481</b>	<b>502</b>	<b>497</b>	<b>391</b>	<b>26.5</b>	<b>19.7</b>	<b>19.8</b>	<b>26.4</b>

Note:

(i) Yearly totals have been rounded off and need not necessarily equal the sum of the rounded off monthly figures.



## 6: Guest Nights Sold/Offered, Sleeper Occupancy Rates, (Tourist Arrivals)

**Table 6.3 Guest Nights Sold/Offered, Sleeper Occupancy Rates, 1994 - 1997**

	Guest nights sold (000's)				Guest nights offered (000's)				Sleeper occupancy rates (%)			
	1994	1995	1996	1997	1994	1995	1996	1997	1994	1995	1996	1997
January	7	5	5	5	34	32	32	31	19.5	15.1	16.4	15.2
February	6	7	7	6	30	28	30	29	21.1	25.8	22.8	22.3
March	8	8	9	7	33	31	32	31	24.5	26.4	26.7	21.3
April	9	10	10	7	31	25	31	31	27.1	38.1	30.9	23.9
May	10	9	10	10	35	31	32	32	28.5	30.8	30.9	29.9
June	9	11	9	9	33	30	30	30	28.3	37.2	30.5	28.9
July	10	11	9	9	35	32	31	31	28.7	36.2	29.3	28.6
August	8	11	10	11	35	32	31	31	25.6	34.8	32.0	34.5
September	12	14	10	11	33	31	31	31	35.2	45.6	34.3	34.8
October	11	11	10	9	35	32	31	31	30.4	34.1	30.9	28.3
November	7	7	7	6	33	31	30	31	20.6	23.8	21.5	20.9
December	6	7	6	6	34	32	31	31	18.9	21.8	20.7	18.9
<b>Total</b>	<b>103</b>	<b>113</b>	<b>101</b>	<b>95</b>	<b>401</b>	<b>369</b>	<b>372</b>	<b>370</b>	<b>25.8</b>	<b>30.7</b>	<b>27.2</b>	<b>25.6</b>

**Table 6.4 Guest Nights Sold/Offered, Sleeper Occupancy Rates, 1998 - 2001**

	Guest nights sold (000's)				Guest nights offered (000's)				Sleeper occupancy rates (%)			
	1998	1999	2000	2001	1998	1999	2000	2001	1998	1999	2000	2001
January	4	5	4	6	30	29	31	31	14.4	17.2	13.0	19.3
February	5	6	6	8	25	26	29	28	21.4	21.8	20.0	26.9
March	7	8	8	9	28	29	31	31	25.8	27.7	25.9	30.7
April	7	8	9	9	26	29	30	30	28.8	27.3	30.8	29.1
May	8	9	12	11	27	29	31	31	30.6	30.0	39.1	34.9
June	9	9	11	12	28	29	30	30	30.5	31.4	36.6	39.5
July	8	8	10	11	29	29	31	31	28.4	27.6	33.4	37.0
August	10	10	12	12	29	29	31	31	36.5	35.2	37.6	40.0
September	12	10	14	14	28	29	31	30	41.5	36.2	44.3	46.3
October	10	11	10	13	29	31	31	31	34.6	34.3	31.6	40.6
November	8	9	8	9	28	30	30	30	27.1	28.8	26.7	29.6
December	6	5	7	7	29	31	31	31	19.5	17.3	21.6	22.1
<b>Total</b>	<b>94</b>	<b>98</b>	<b>111</b>	<b>121</b>	<b>336</b>	<b>351</b>	<b>368</b>	<b>366</b>	<b>28.2</b>	<b>27.9</b>	<b>30.1</b>	<b>33.0</b>

Note:

(i) Yearly totals have been rounded off and need not necessarily equal the sum of the rounded off monthly figures.

## 6: Guest Nights Sold/Offered, Sleeper Occupancy Rates, (Tourist Arrivals)

**Table 6.5 Guest Nights Sold/Offered, Sleeper Occupancy Rates, 2002 - 2005**

	Guest nights sold (000's)				Guest nights offered (000's)				Sleeper occupancy rates (%)			
	2002	2003	2004	2005	2002	2003	2004	2005	2002	2003	2004	2005
January	6	6	7	9	31	31	29	31	20.4	20.6	22.9	29.1
February	8	8	8	12	28	28	29	27	28.8	29.2	27.9	43.6
March	11	11	11	12	31	31	31	29	34.5	34.0	37.0	42.6
April	10	10	10	13	30	30	30	28	33.0	31.5	33.9	47.1
May	11	11	12	15	31	31	31	30	36.5	34.5	39.6	48.8
June	10	12	11	15	30	30	30	28	33.0	38.5	37.4	52.2
July	12	11	15	13	31	31	31	29	38.7	34.8	47.4	43.7
August	13	13	16	13	31	31	31	29	40.7	40.4	50.7	46.1
September	15	14	17	15	30	30	31	28	48.7	46.5	55.2	54.7
October	13	12	15	16	31	31	31	29	40.9	40.0	48.2	53.4
November	9	10	13	10	30	30	30	29	29.8	33.2	41.5	36.0
December	7	6	10	7	31	31	31	32	22.9	20.9	30.4	21.1
<b>Total</b>	<b>125</b>	<b>123</b>	<b>145</b>	<b>150</b>	<b>367</b>	<b>367</b>	<b>366</b>	<b>349</b>	<b>34.0</b>	<b>33.7</b>	<b>39.5</b>	<b>42.9</b>

**Table 6.6 Guest Nights Sold/Offered, Sleeper Occupancy Rates, 2006 - 2009**

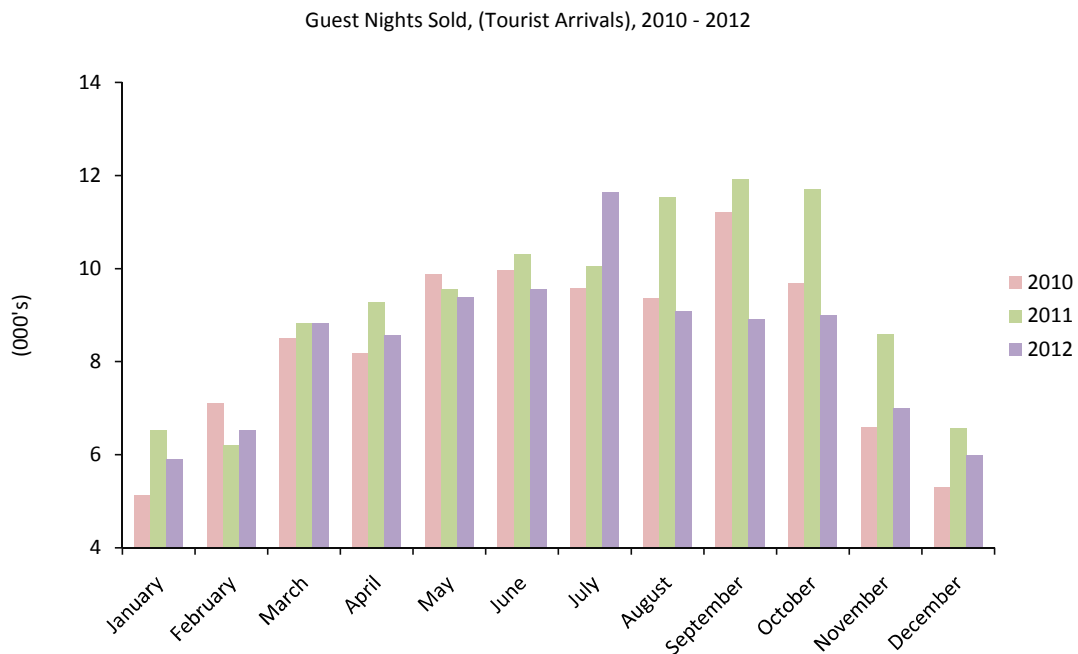
	Guest nights sold (000's)				Guest nights offered (000's)				Sleeper occupancy rates (%)			
	2006	2007	2008	2009	2006	2007	2008	2009	2006	2007	2008	2009
January	8	7	7	7	34	38	36	35	22.4	18.3	18.9	19.7
February	8	7	7	8	31	35	34	32	26.4	21.1	19.8	23.9
March	11	9	8	11	34	38	37	36	31.2	23.1	21.1	30.7
April	11	10	10	11	33	37	35	34	32.4	27.5	29.0	30.7
May	12	10	11	11	34	36	37	35	33.9	27.9	30.5	30.1
June	13	11	11	9	33	35	35	34	37.8	30.8	30.8	27.5
July	12	10	11	11	35	36	36	35	34.9	26.8	29.5	31.1
August	13	11	13	11	35	36	36	35	35.8	29.7	35.0	32.2
September	14	13	12	11	34	35	35	34	41.4	35.7	34.5	33.6
October	13	14	12	11	35	37	36	35	38.0	36.9	32.7	31.0
November	9	9	8	7	34	36	34	34	27.2	23.7	23.9	19.9
December	7	6	6	6	35	37	35	35	19.7	16.7	18.3	16.8
<b>Total</b>	<b>129</b>	<b>115</b>	<b>115</b>	<b>113</b>	<b>406</b>	<b>434</b>	<b>425</b>	<b>416</b>	<b>31.7</b>	<b>26.5</b>	<b>27.0</b>	<b>27.3</b>

*Note:**(i) Yearly totals have been rounded off and need not necessarily equal the sum of the rounded off monthly figures.*

6: Guest Nights Sold/Offered, Sleeper Occupancy Rates, (Tourist Arrivals)

**Table 6.7 Guest Nights Sold, 2010 - 2012**

	Guest nights sold (000's)		
	2010	2011	2012
January	5.1	6.5	5.9
February	7.1	6.2	6.5
March	8.5	8.8	8.8
April	8.2	9.3	8.6
May	9.9	9.6	9.4
June	10.0	10.3	9.6
July	9.6	10.0	11.6
August	9.4	11.5	9.1
September	11.2	11.9	8.9
October	9.7	11.7	9.0
November	6.6	8.6	7.3
December	5.3	6.6	5.8
<b>Total</b>	<b>100.5</b>	<b>111.1</b>	<b>100.5</b>



*Note:*

(i) Yearly totals have been rounded off and need not necessarily equal the sum of the rounded off monthly figures.

6: Guest Nights Sold/Offered, Sleeper Occupancy Rates, (Tourist Arrivals)

**Table 6.8 Guest Nights Offered, 2010 - 2012**

	Guest nights offered (000's)		
	2010	2011	2012
January	35.3	34.0	33.2
February	31.9	30.6	31.0
March	35.4	33.9	33.1
April	34.2	32.8	31.1
May	35.4	34.6	32.1
June	34.0	33.5	31.1
July	35.0	34.7	32.1
August	35.0	34.3	32.0
September	34.3	33.6	31.0
October	35.5	33.4	32.7
November	34.0	32.7	31.6
December	35.2	33.8	32.5
<b>Total</b>	<b>415.0</b>	<b>401.8</b>	<b>383.6</b>



Note:

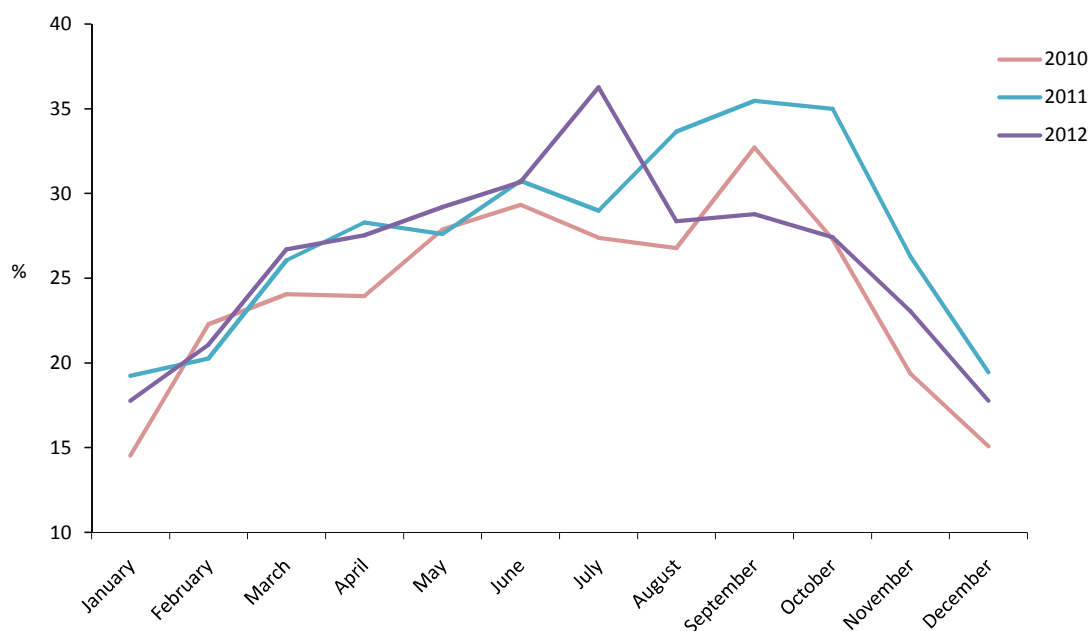
(i) Yearly totals have been rounded off and need not necessarily equal the sum of the rounded off monthly figures.

6: Guest Nights Sold/Offered, Sleeper Occupancy Rates, (Tourist Arrivals)

**Table 6.9 Sleeper Occupancy Rates, 2010 - 2012**

	Sleeper occupancy rates (%)		
	2010	2011	2012
January	14.5	19.2	17.8
February	22.3	20.3	21.1
March	24.1	26.1	26.7
April	23.9	28.3	27.5
May	27.9	27.6	29.2
June	29.3	30.8	30.7
July	27.4	29.0	36.3
August	26.8	33.7	28.4
September	32.7	35.5	28.8
October	27.3	35.0	27.4
November	19.4	26.3	23.1
December	15.1	19.5	17.8
<b>Total</b>	<b>24.2</b>	<b>27.6</b>	<b>26.2</b>

Sleeper Occupancy Rates (Tourist Arrivals), 2010 - 2012



Note:

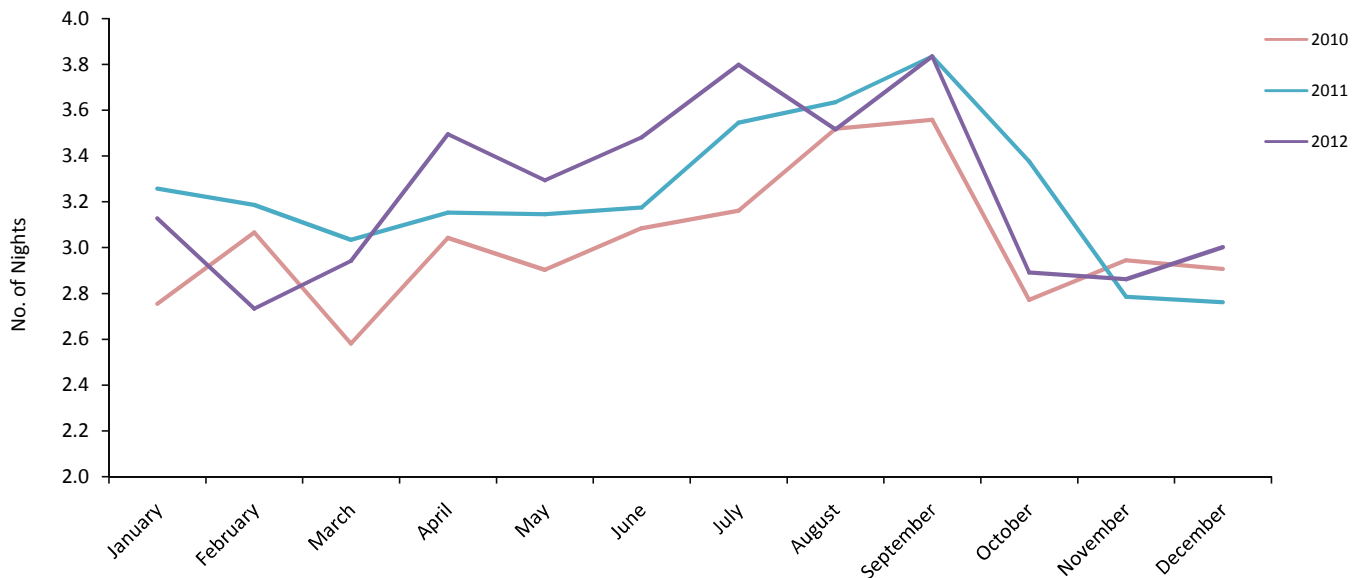
(i) Yearly totals have been rounded off and need not necessarily equal the sum of the rounded off monthly figures.

7: Average Length of Stay (Nights)

**Table 7.1 Average Length of Stay Per Person (All Arrivals), 2001 - 2012**

Year	Average length of stay (nights)												Total
	Jan	Feb	Mar	Apr	May	Jun	Jul	Aug	Sep	Oct	Nov	Dec	
2001	2.7	3.4	3.3	3.4	3.4	3.5	3.3	3.4	3.6	3.5	3.5	3.1	<b>3.3</b>
2002	3.0	2.9	3.2	3.1	3.1	3.0	3.1	3.1	3.2	3.1	3.0	2.8	<b>3.1</b>
2003	2.8	2.9	3.0	3.1	3.0	3.1	3.1	3.1	3.4	3.2	2.8	2.7	<b>3.0</b>
2004	2.9	2.9	3.2	3.2	3.1	3.2	3.6	3.7	3.5	3.4	3.1	3.2	<b>3.3</b>
2005	3.0	3.4	3.1	3.3	3.2	3.6	3.3	3.3	3.5	3.8	3.5	2.9	<b>3.3</b>
2006	2.8	2.9	3.1	3.1	3.0	3.4	3.8	3.8	3.6	3.4	3.1	3.0	<b>3.2</b>
2007	3.1	3.5	3.3	3.4	2.8	3.1	3.2	3.3	3.4	3.1	2.8	2.6	<b>3.1</b>
2008	2.8	2.7	2.6	2.9	2.8	3.3	3.0	3.2	3.3	3.2	2.9	2.7	<b>3.0</b>
2009	2.7	2.8	3.0	2.8	3.2	3.0	3.1	3.4	3.3	3.0	2.5	2.7	<b>3.0</b>
2010	2.8	3.1	2.6	3.0	2.9	3.1	3.2	3.5	3.6	2.8	2.9	2.9	<b>3.0</b>
2011	3.3	3.2	3.0	3.2	3.1	3.2	3.5	3.6	3.8	3.4	2.8	2.8	<b>3.3</b>
2012	3.1	2.7	2.9	3.5	3.3	3.5	3.8	3.5	3.8	2.9	2.9	3.0	<b>3.3</b>

Average Length of Stay (All Arrivals), 2010 - 2012



7: Average Length of Stay (Nights)

**Table 7.2 Average Length of Stay Per Person (Tourist Arrivals), 2001 - 2012**

Year	Average length of stay (nights)												Total
	Jan	Feb	Mar	Apr	May	Jun	Jul	Aug	Sep	Oct	Nov	Dec	
2001	2.6	3.2	3.0	2.9	3.1	3.5	3.1	3.0	3.4	3.3	2.6	2.6	<b>3.1</b>
2002	2.8	2.7	3.0	3.1	3.0	3.4	3.0	3.1	3.2	3.2	2.7	2.7	<b>3.0</b>
2003	2.8	2.9	3.0	2.9	3.0	3.2	3.1	3.1	3.5	3.2	2.8	2.4	<b>3.0</b>
2004	2.5	2.6	3.0	3.0	2.8	3.0	3.8	3.8	3.7	3.7	3.3	3.4	<b>3.2</b>
2005	3.2	3.6	3.4	3.7	3.4	3.8	3.6	3.3	3.8	4.0	3.8	3.0	<b>3.6</b>
2006	3.0	3.1	2.9	3.0	2.8	3.2	3.8	3.9	3.7	3.4	3.0	3.0	<b>3.2</b>
2007	2.9	3.2	2.9	3.2	3.0	2.9	2.7	2.8	3.1	2.9	2.4	2.6	<b>2.9</b>
2008	2.1	2.2	2.2	2.5	2.7	2.9	2.5	3.2	3.0	2.8	2.4	2.6	<b>2.6</b>
2009	2.2	2.0	2.5	2.6	2.8	2.3	2.7	3.2	2.9	2.7	2.1	2.5	<b>2.5</b>
2010	2.2	2.3	2.3	2.8	2.8	2.7	2.9	2.9	3.3	2.5	2.7	2.5	<b>2.7</b>
2011	2.4	2.2	2.6	2.9	2.7	2.8	2.8	2.9	3.1	2.9	2.6	2.6	<b>2.7</b>
2012	2.5	2.2	2.5	2.8	2.6	2.5	3.1	2.6	2.6	2.3	2.4	2.7	<b>2.6</b>

Average Length of Stay (Tourist Arrivals), 2010 - 2012

