

GOVERNMENT OF GIBRALTAR

HOTEL OCCUPANCY

SURVEY

2010

STATISTICS OFFICE



GOVERNMENT OF GIBRALTAR

HOTEL OCCUPANCY SURVEY 2010

STATISTICS OFFICE

Government of Gibraltar
Statistics Office

Statistics Online

Copies of the Hotel Occupancy Survey can be obtained, free of charge from the Statistics Office and are also available electronically on the Gibraltar Government Website www.gibraltar.gov.gi.

Historical data can be downloaded from previous copies of the report available on-line.

Comments and requests for general information should be addressed to:

Statistics Office
99 Harbours Walk
The New Harbours
Gibraltar

Or

E-mail: statistics@gibraltar.gov.gi

Tel: +350 20075515/ +350 20075490

Fax: +350 20051160

PREFACE

The Statistics (Hotel Occupancy Survey) Order 1971 requires that the Government Statistician prepares a report and summary of the findings of the Hotel Occupancy Survey to be laid before the Gibraltar Parliament.

This report contains a summary of the statistics collected for the years 1984 – 2010.

I must express my thanks to the establishments for their continued co-operation in the conduct of this Survey.

GOVERNMENT STATISTICIAN

- C O N T E N T S -

A. Definitions and Notes

<u>TABLES</u>	<u>DESCRIPTION</u>	<u>PAGE</u>
1	General Analysis, 1984 - 2010	1
Chart	All Arrivals at Hotels, 1984 - 2010	2
Chart	% Room Occupancy, All Arrivals, 1991 - 2010	
Chart	% Sleeper Occupancy, All Arrivals, 1984 - 2010	3
Chart	Average Length of Stay, All Arrivals, 1984 - 2010	
2(a)	Room Nights Sold and Offered, 2004 - 2008 (All Arrivals)	4
2(b)	Room Nights Sold and Offered, 2009 - 2010 (All Arrivals)	5
Chart	Room Nights Sold, All Arrivals, 2009 - 2010	
2(c)	Room Nights Sold and Offered, 2004 - 2008 (Tourist Arrivals)	6
2(d)	Room Nights Sold and Offered, 2009 - 2010 (Tourist Arrivals)	7
Chart	Room Nights Sold, Tourist Arrivals, 2009 - 2010	
3(a)	% Room Occupancy Rates, 2000 - 2004	8
3(b)	% Room Occupancy Rates, All Arrivals, 2005 - 2010	9
Chart	% Room Occupancy Rates, All Arrivals, 2009 - 2010	
3(c)	% Room Occupancy Rates, Tourist Arrivals, 2005 - 2010	10
Chart	% Room Occupancy Rates, Tourist Arrivals, 2009 - 2010	
4(a)	Number of Arrivals by Month, 1984 - 1990	11
4(b)	Number of Arrivals by Month, 1991 - 1997	12
4(c)	Number of Arrivals by Month, 1998 - 2004	13
4(d)	Number of Arrivals by Month, 2005 - 2010 (All Arrivals)	14
Chart	All Arrivals at Hotels, 2009 - 2010	
4(e)	Number of Arrivals by Month, 2005 - 2010 (Tourist Arrivals)	15
Chart	Tourist Arrivals at Hotels, 2009 - 2010	
5(a)	Guest Nights Sold/Offered, % Sleeper Occupancy, 1984 - 1987 (All Arrivals)	16
5(b)	Guest Nights Sold/Offered, % Sleeper Occupancy, 1988 - 1991 (All Arrivals)	
5(c)	Guest Nights Sold/Offered, % Sleeper Occupancy, 1992 - 1995 (All Arrivals)	17
5(d)	Guest Nights Sold/Offered, % Sleeper Occupancy, 1996 - 1999 (All Arrivals)	
5(e)	Guest Nights Sold/Offered, % Sleeper Occupancy, 2000 - 2003 (All Arrivals)	18
5(f)	Guest Nights Sold/Offered, % Sleeper Occupancy, 2004 - 2007 (All Arrivals)	

- C O N T E N T S -

<u>TABLES</u>	<u>DESCRIPTION</u>	<u>PAGE</u>
5(g)	Guest Nights Sold, 2008 - 2010 (All Arrivals)	19
Chart 5(h)	Guest Nights Sold, All Arrivals, 2008 - 2010 Guest Nights Offered, 2008 - 2010 (All Arrivals)	20
Chart 5(i)	Guest Nights Offered, All Arrivals, 2008 - 2010 % Sleeper Occupancy, 2008 - 2010 (All Arrivals)	21
Chart 6(a)	% Sleeper Occupancy, All Arrivals, 2008 - 2010 Guest Nights Sold/Offered, % Sleeper Occupancy, 1984 - 1987 (Tourist Arrivals)	22
6(b)	Guest Nights Sold/Offered, % Sleeper Occupancy, 1988 - 1991 (Tourist Arrivals)	
6(c)	Guest Nights Sold/Offered, % Sleeper Occupancy, 1992 - 1995 (Tourist Arrivals)	23
6(d)	Guest Nights Sold/Offered, % Sleeper Occupancy, 1996 - 1999 (Tourist Arrivals)	
6(e)	Guest Nights Sold/Offered, % Sleeper Occupancy, 2000 - 2003 (Tourist Arrivals)	24
6(f)	Guest Nights Sold/Offered, % Sleeper Occupancy, 2004 - 2007 (Tourist Arrivals)	
6(g)	Guest Nights Sold, 2008 - 2010 (Tourist Arrivals)	25
Chart 6(h)	Guest Nights Sold, Tourist Arrivals, 2008 - 2010 Guest Nights Offered, 2008 - 2010 (Tourist Arrivals)	26
Chart 6(i)	Guest Nights Offered, Tourist Arrivals, 2008 - 2010 % Sleeper Occupancy, 2008 - 2010 (Tourist Arrivals)	27
Chart 7(a)	% Sleeper Occupancy, Tourist Arrivals, 2008 - 2010 Average Length of Stay Per Person (Nights), 1999 - 2010 (All Arrivals)	28
Chart 7(b)	Average Length of Stay, All Arrivals, 2008 - 2010 Average Length of Stay Per Person (Nights), 1999 - 2010 (Tourist Arrivals)	29
Chart Table 8 Chart	Average Length of Stay, Tourist Arrivals, 2008 - 2010 Summary of Hotel Statistics, 1984 - 2010 All Arrivals at Hotels, 1984 - 2010	30

A. DEFINITIONS AND NOTES

- (a) Tourist: A tourist is a person who is primarily in Gibraltar for the purpose of a holiday. It is nevertheless up to the discretion of the individual hotels who to include under this category.
- (b) Guest Nights: Calculated on the basis of “one guest x one night”.
- (c) Room Nights: Calculated on the basis of “one room x one night”.
- (d) Sleeper Occupancy: Calculated as the percentage of guest nights sold over guest nights offered. It should be noted that this measure does not necessarily give an accurate indication of the ability of the hotel to accept more guests. e.g. one person staying in a room with two beds gives a 50% sleeper occupancy and a 100% room occupancy.
- (e) Room Occupancy: Calculated as the percentage of room nights sold over room nights offered.
- (f) Abbreviations:
 - GNS - Guest Nights Sold.
 - GNO - Guest Nights Offered.
 - RNS - Room Nights Sold.
 - RNO - Room Nights Offered.
- (g) In interpreting the figures it should be noted that:
 - (i) As from September 1992, the Montarik Hotel is not included.
 - (ii) As from November 1992, the Gibraltar Beach Hotel is not included.
 - (iii) The Sunrise Motel is included for the period January 1992 to December 1994 and from January 2007
 - (iv) The Cannon Hotel is included with effect from July 1995.
 - (v) The Emile Youth Hostel, Governor’s Inn Apartments and Herald Travel Apartments are included with effect from January 2006.
 - (vi) The Continental Hotel is included for the period January 1986 to July 2008.
- (h) The survey is based on the figures provided by the Caleta Hotel, O’Callaghan Elliott Hotel, Rock Hotel, Bristol Hotel, Queens Hotel, Cannon Hotel, The Emile Youth Hostel, Governor’s Inn Apartments, Herald Travel Apartments and the Sunrise Motel.

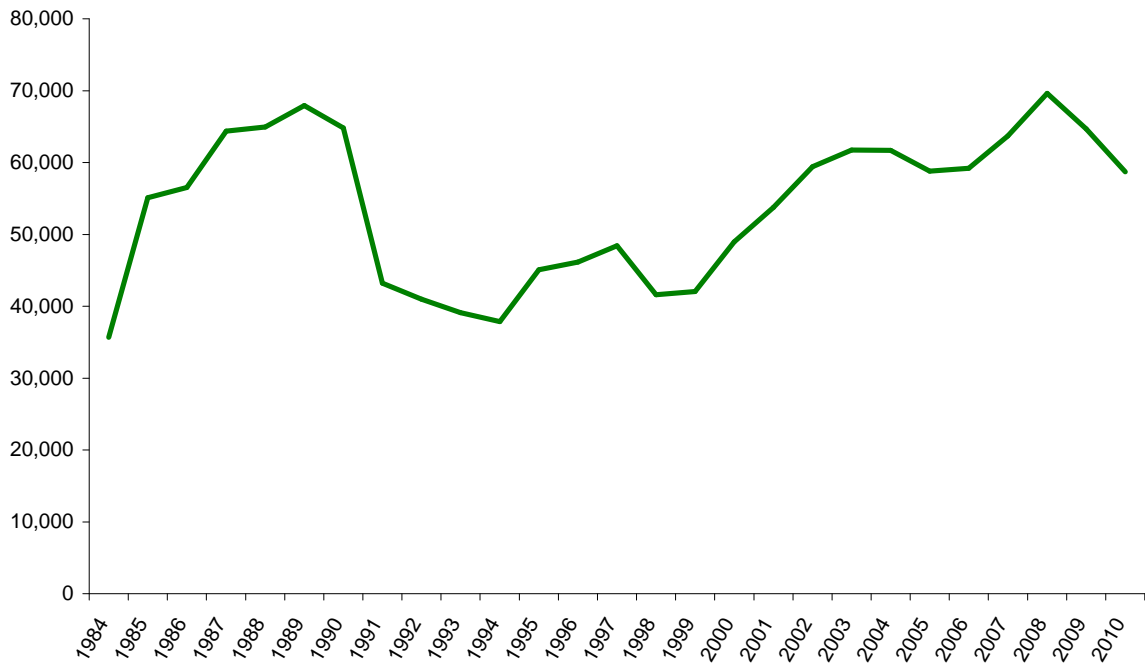
Table 1: General Analysis, 1984 - 2010**ALL VISITORS**

<u>YEAR</u>	<u>TOTAL ARRIVALS</u>	<u>(000's)</u>		<u>% ROOM OCCUPANCY</u>	<u>(000's)</u>		<u>% SLEEPER OCCUPANCY</u>	<u>AVERAGE LENGTH OF STAY</u>
		<u>RNO</u>	<u>RNS</u>		<u>GNO</u>	<u>GNS</u>		
1984	35,690	n/a	n/a	n/a	546	226	41.3	6.3
1985	55,119	n/a	n/a	n/a	552	282	51.0	5.1
1986	56,525	n/a	n/a	n/a	519	266	51.3	4.6
1987	64,349	n/a	n/a	n/a	535	278	52.3	4.3
1988	64,942	n/a	n/a	61.3	551	286	52.0	4.4
1989	67,934	n/a	n/a	53.3	501	220	44.0	3.2
1990	64,793	n/a	n/a	51.3	481	197	40.8	3.0
1991	43,193	n/a	n/a	50.6	502	178	35.5	4.1
1992	40,986	237	98	41.2	497	157	31.6	3.8
1993	39,123	195	94	48.4	391	157	40.2	4.0
1994	37,851	199	89	44.5	401	149	37.2	3.9
1995	45,056	192	88	46.1	369	144	39.2	3.2
1996	46,142	191	83	43.3	372	141	37.8	3.1
1997	48,420	190	90	47.3	370	144	39.0	3.0
1998	41,616	173	93	53.6	335	145	43.1	3.5
1999	42,031	179	99	55.3	351	154	43.7	3.7
2000	48,949	179	105	58.9	368	164	44.6	3.4
2001	53,776	179	115	64.2	366	179	48.9	3.3
2002	59,417	183	118	64.4	367	182	49.7	3.1
2003	61,743	186	119	64.2	367	188	51.2	3.0
2004	61,710	186	126	68.2	366	202	55.1	3.3
2005	58,796	177	122	68.6	349	196	56.2	3.3
2006	59,194	200	119	59.2	406	192	47.3	3.2
2007	63,691	220	127	57.8	434	200	45.9	3.1
2008	69,630	219	133	60.6	425	207	48.7	3.0
2009	64,691	214	123	57.4	416	192	46.2	3.0
2010	58,692	215	113	52.8	415	178	42.8	3.0

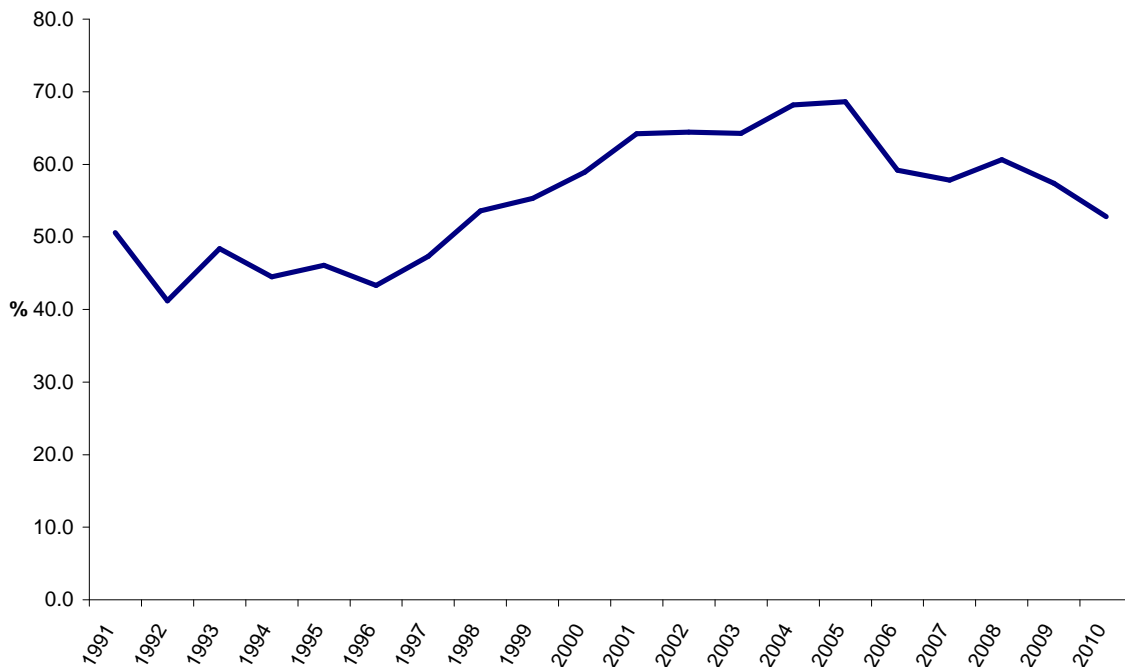
Notes:

1. RNO - Room Nights Offered.
2. RNS - Room Nights Sold.
3. GNO - Guest Nights Offered.
4. GNS - Guest Nights Sold.
5. With effect from January 1992, hotels were required under the legislation to submit returns which included the % room occupancy figures. For the period 1988 to 1991, these figures were provided voluntarily by the hotels.

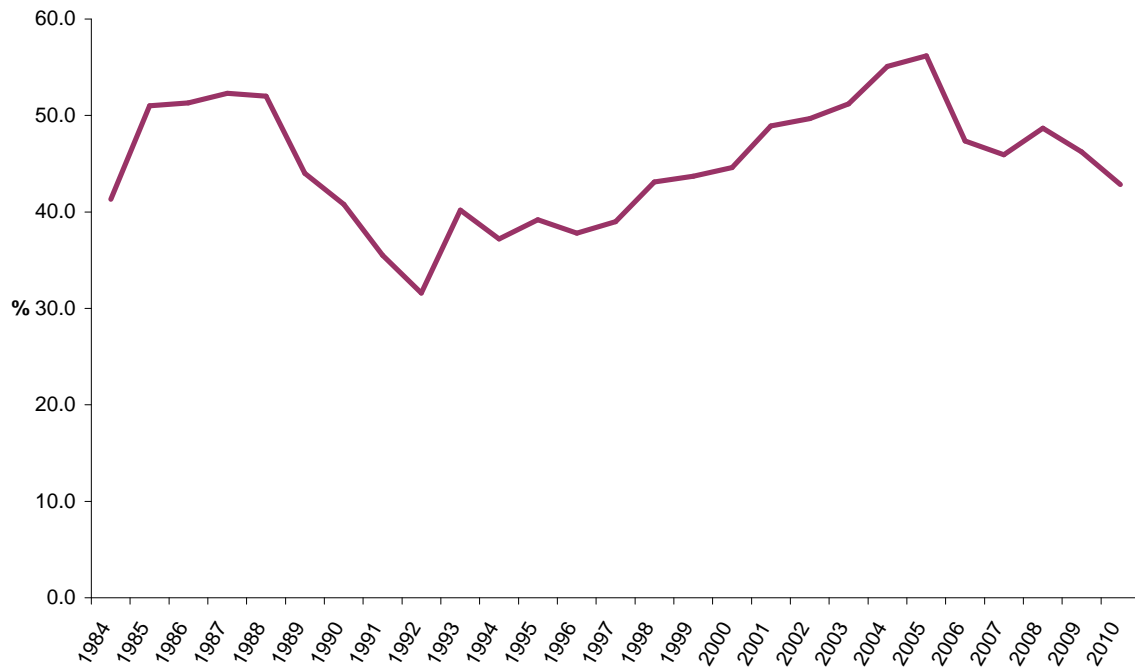
ALL ARRIVALS AT HOTELS, 1984 - 2010



% ROOM OCCUPANCY, ALL ARRIVALS, 1991 - 2010



% SLEEPER OCCUPANCY, ALL ARRIVALS, 1984 - 2010



AVERAGE LENGTH OF STAY, ALL ARRIVALS, 1984 - 2010

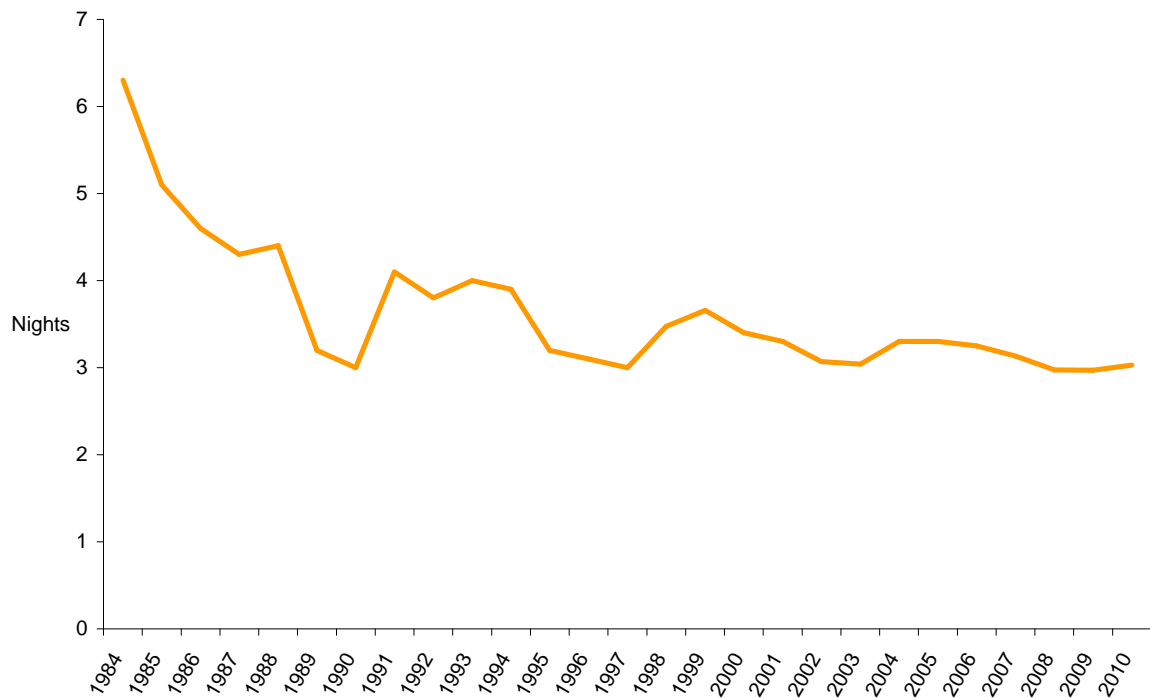


Table 2(a): Room Nights Sold and Offered, 2004 - 2008

ALL ARRIVALS

ROOM NIGHTS SOLD

(000's)

<u>MONTH</u>	<u>2004</u>	<u>2005</u>	<u>2006</u>	<u>2007</u>	<u>2008</u>
JANUARY	7.2	8.4	7.6	8.2	9.8
FEBRUARY	8.5	10.7	8.2	9.3	9.3
MARCH	11.3	9.9	11.0	9.7	9.3
APRIL	9.4	10.7	10.0	10.8	11.1
MAY	11.0	11.3	10.6	11.3	12.2
JUNE	11.6	10.7	11.3	11.8	11.9
JULY	11.6	10.1	10.9	10.7	12.1
AUGUST	11.9	10.3	9.7	12.1	14.0
SEPTEMBER	13.4	11.4	11.7	13.1	13.1
OCTOBER	11.7	12.1	11.4	13.1	12.9
NOVEMBER	10.6	9.0	8.9	10.2	9.5
DECEMBER	8.3	7.0	7.3	7.3	7.5
TOTAL	126.4	121.6	118.6	127.4	132.6

ROOM NIGHTS OFFERED

(000's)

<u>MONTH</u>	<u>2004</u>	<u>2005</u>	<u>2006</u>	<u>2007</u>	<u>2008</u>
JANUARY	14.7	15.6	16.9	18.9	18.7
FEBRUARY	14.6	13.5	15.4	17.1	17.5
MARCH	15.8	14.9	16.9	18.9	18.8
APRIL	15.3	14.6	16.5	18.1	18.1
MAY	15.8	15.3	16.9	18.5	18.7
JUNE	15.3	14.3	16.4	17.8	18.2
JULY	15.9	14.8	17.1	18.4	18.7
AUGUST	15.9	14.7	17.1	18.4	18.3
SEPTEMBER	15.3	14.2	16.6	18.2	17.8
OCTOBER	15.8	14.7	17.1	18.8	18.3
NOVEMBER	15.3	14.6	16.5	18.3	17.7
DECEMBER	15.8	16.1	17.0	18.8	17.9
TOTAL	185.5	177.2	200.4	220.2	218.7

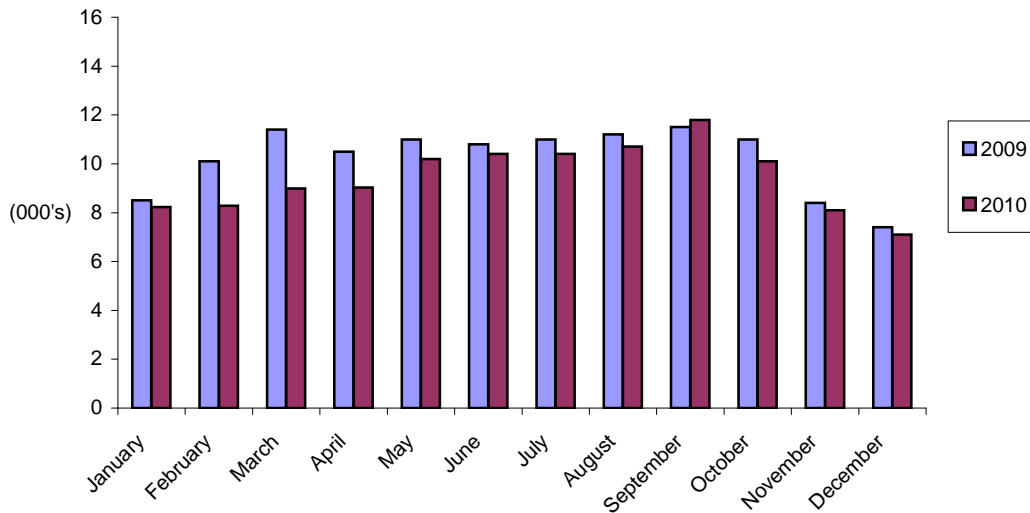
Note: Yearly totals have been rounded off and need not necessarily equal the sum of the rounded-off monthly figures.

Table 2(b): Room Nights Sold and Offered, 2009 - 2010

ALL ARRIVALS

<u>MONTH</u>	<u>ROOM NIGHTS SOLD</u>		<u>ROOM NIGHTS OFFERED</u>	
	<u>(000's)</u>		<u>(000's)</u>	
	<u>2009</u>	<u>2010</u>	<u>2009</u>	<u>2010</u>
JANUARY	8.5	8.2	18.0	18.2
FEBRUARY	10.1	8.3	16.3	16.4
MARCH	11.4	9.0	18.3	18.2
APRIL	10.5	9.0	17.6	17.6
MAY	11.0	10.2	18.3	18.3
JUNE	10.8	10.4	17.7	17.6
JULY	11.0	10.4	18.2	18.1
AUGUST	11.2	10.7	18.2	18.1
SEPTEMBER	11.5	11.8	17.5	17.7
OCTOBER	11.0	10.1	18.3	18.4
NOVEMBER	8.4	8.1	17.6	17.7
DECEMBER	7.4	7.1	18.3	18.3
TOTAL	122.9	113.3	214.2	214.8

ROOM NIGHTS SOLD, ALL ARRIVALS 2009 - 2010



Note: Yearly totals have been rounded off and need not necessarily equal the sum of the rounded-off monthly figures.

Table 2(c): Room Nights Sold and Offered, 2004 - 2008

TOURIST ARRIVALS

ROOM NIGHTS SOLD

(000's)

<u>MONTH</u>	<u>2004</u>	<u>2005</u>	<u>2006</u>	<u>2007</u>	<u>2008</u>
JANUARY	4.2	5.1	4.2	4.5	5.0
FEBRUARY	5.3	6.7	4.6	4.2	4.7
MARCH	6.9	6.3	6.1	5.8	4.8
APRIL	6.1	7.1	6.1	6.2	6.0
MAY	7.3	7.8	7.0	6.0	6.6
JUNE	7.0	7.8	7.9	6.3	6.4
JULY	7.4	6.3	6.7	6.3	6.4
AUGUST	7.7	6.8	6.9	7.1	6.6
SEPTEMBER	9.2	7.5	8.3	7.3	6.9
OCTOBER	8.0	8.1	8.4	7.7	7.0
NOVEMBER	6.8	5.3	6.1	5.3	5.5
DECEMBER	5.3	4.0	4.2	4.0	3.9
TOTAL	81.2	78.7	76.5	70.6	69.8

ROOM NIGHTS OFFERED

(000's)

<u>MONTH</u>	<u>2004</u>	<u>2005</u>	<u>2006</u>	<u>2007</u>	<u>2008</u>
JANUARY	14.7	15.6	16.9	18.9	18.7
FEBRUARY	14.6	13.5	15.4	17.1	17.5
MARCH	15.8	14.9	16.9	18.9	18.8
APRIL	15.3	14.6	16.5	18.1	18.1
MAY	15.8	15.3	16.9	18.5	18.7
JUNE	15.3	14.3	16.4	17.8	18.2
JULY	15.9	14.8	17.1	18.4	18.7
AUGUST	15.9	14.7	17.1	18.4	18.3
SEPTEMBER	15.3	14.2	16.6	18.2	17.8
OCTOBER	15.8	14.7	17.1	18.8	18.3
NOVEMBER	15.3	14.6	16.5	18.3	17.7
DECEMBER	15.8	16.1	17.0	18.8	17.9
TOTAL	185.5	177.2	200.4	220.2	218.7

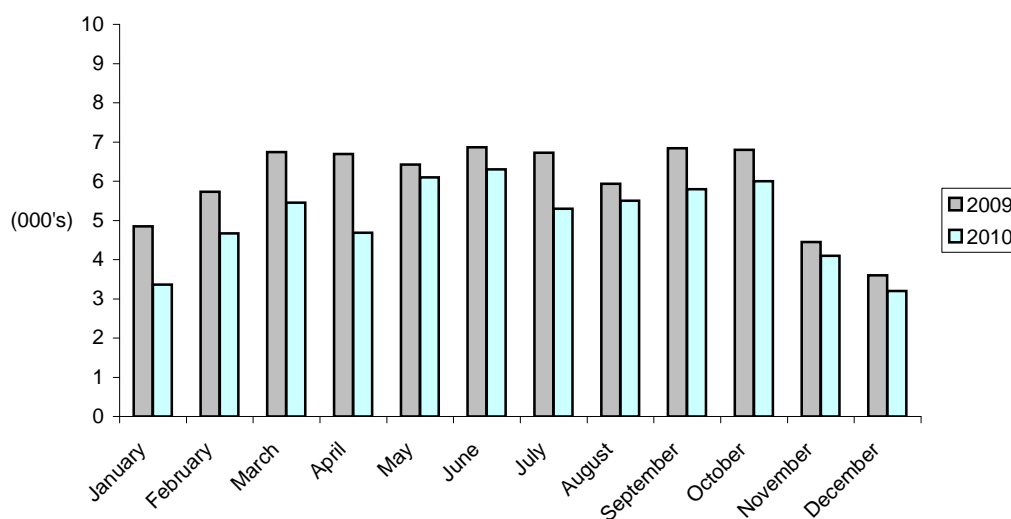
Note: Yearly totals have been rounded off and need not necessarily equal the sum of the rounded-off monthly figures.

Table 2(d): Room Nights Sold and Offered, 2009 - 2010

TOURIST ARRIVALS

<u>MONTH</u>	<u>ROOM NIGHTS SOLD</u>		<u>ROOM NIGHTS OFFERED</u>	
	<u>(000's)</u>		<u>(000's)</u>	
	<u>2009</u>	<u>2010</u>	<u>2009</u>	<u>2010</u>
JANUARY	4.8	3.4	18.0	18.2
FEBRUARY	5.7	4.7	16.3	16.4
MARCH	6.7	5.5	18.3	18.2
APRIL	6.7	4.7	17.6	17.6
MAY	6.4	6.1	18.3	18.3
JUNE	6.9	6.3	17.7	17.6
JULY	6.7	5.3	18.2	18.1
AUGUST	5.9	5.5	18.2	18.1
SEPTEMBER	6.8	5.8	17.5	17.7
OCTOBER	6.8	6.0	18.3	18.4
NOVEMBER	4.4	4.1	17.6	17.7
DECEMBER	3.6	3.2	18.3	18.3
TOTAL	71.7	60.4	214.2	214.8

ROOM NIGHTS SOLD, TOURIST ARRIVALS, 2009 - 2010



Note: Yearly totals have been rounded off and need not necessarily equal the sum of the rounded-off monthly figures.

Table 3(a): % Room Occupancy Rates, 2000 - 2004

ALL ARRIVALS

	<u>%</u>				
<u>MONTH</u>	<u>2000</u>	<u>2001</u>	<u>2002</u>	<u>2003</u>	<u>2004</u>
JANUARY	30.6	44.4	42.3	46.7	48.9
FEBRUARY	41.6	55.1	56.6	58.7	58.6
MARCH	51.7	67.3	62.4	66.8	71.3
APRIL	58.6	66.0	61.1	66.4	61.3
MAY	82.2	71.6	67.6	68.4	69.8
JUNE	72.2	75.3	72.0	76.6	75.9
JULY	63.6	67.0	71.4	66.3	73.0
AUGUST	61.9	66.0	67.0	63.9	75.0
SEPTEMBER	80.5	80.7	84.0	79.1	87.4
OCTOBER	64.8	73.3	72.9	71.1	73.9
NOVEMBER	52.9	58.8	66.9	64.1	69.2
DECEMBER	45.0	44.8	47.9	43.1	52.2
TOTAL	58.9	64.2	64.4	64.2	68.2

TOURIST ARRIVALS

	<u>%</u>				
<u>MONTH</u>	<u>2000</u>	<u>2001</u>	<u>2002</u>	<u>2003</u>	<u>2004</u>
JANUARY	19.6	26.1	25.4	27.2	28.6
FEBRUARY	24.8	33.7	35.1	31.3	36.5
MARCH	33.1	39.4	43.3	40.9	43.8
APRIL	38.3	35.8	41.2	37.9	39.8
MAY	50.9	42.6	45.5	40.5	46.1
JUNE	44.4	48.2	40.8	45.5	45.5
JULY	39.6	44.5	47.1	40.9	46.9
AUGUST	42.9	44.7	44.8	42.5	48.8
SEPTEMBER	54.2	55.2	56.8	53.6	59.8
OCTOBER	43.4	48.9	44.9	47.1	50.6
NOVEMBER	33.7	37.2	36.6	40.3	44.2
DECEMBER	26.8	27.3	28.8	25.1	33.2
TOTAL	37.7	40.3	40.9	39.4	43.7

Table 3(b): % Room Occupancy Rates, 2005 - 2010

ALL ARRIVALS

%

<u>MONTH</u>	<u>2005</u>	<u>2006</u>	<u>2007</u>	<u>2008</u>	<u>2009</u>	<u>2010</u>
JANUARY	54.3	45.1	43.3	52.3	47.3	45.2
FEBRUARY	79.2	53.0	54.4	52.9	62.1	50.4
MARCH	66.2	65.1	51.3	49.7	62.3	49.3
APRIL	73.2	60.3	59.4	61.2	59.8	51.2
MAY	73.6	62.6	61.0	65.1	60.5	56.1
JUNE	75.3	68.6	66.2	65.4	61.1	58.8
JULY	68.3	64.0	58.1	64.4	60.5	57.2
AUGUST	70.0	56.7	65.8	76.2	61.8	58.8
SEPTEMBER	80.0	70.8	71.9	73.5	65.6	66.5
OCTOBER	82.2	66.7	69.3	70.7	60.0	55.0
NOVEMBER	62.0	54.0	55.4	53.9	47.8	45.8
DECEMBER	43.7	42.9	38.8	41.9	40.3	39.1
TOTAL	68.6	59.2	57.8	60.6	57.4	52.8

% ROOM OCCUPANCY RATES, ALL ARRIVALS, 2009 - 2010

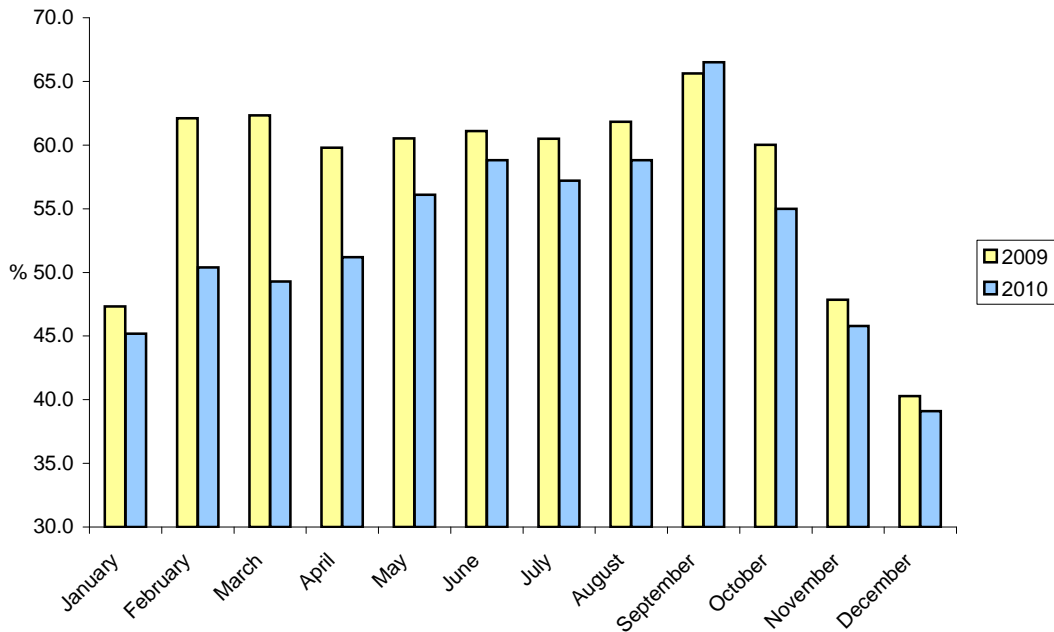


Table 3(c): % Room Occupancy Rates, 2005 - 2010

TOURIST ARRIVALS

%

<u>MONTH</u>	<u>2005</u>	<u>2006</u>	<u>2007</u>	<u>2008</u>	<u>2009</u>	<u>2010</u>
JANUARY	32.5	24.7	23.9	26.6	27.0	18.5
FEBRUARY	49.5	29.9	24.8	26.7	35.2	28.4
MARCH	42.2	35.8	30.8	25.7	36.9	29.9
APRIL	48.9	36.9	34.0	33.3	37.9	26.6
MAY	50.7	41.7	32.2	35.2	35.2	33.2
JUNE	54.6	47.8	35.4	35.4	38.9	35.5
JULY	42.5	39.4	34.4	33.9	37.0	29.2
AUGUST	46.1	40.5	38.3	35.8	32.6	30.2
SEPTEMBER	53.0	50.3	40.0	38.8	39.0	32.8
OCTOBER	55.0	48.8	40.7	38.3	37.2	32.5
NOVEMBER	36.5	36.8	29.1	30.9	25.2	23.2
DECEMBER	24.8	24.9	21.3	22.0	19.7	17.6
TOTAL	44.4	38.2	32.1	31.9	33.5	28.1

% ROOM OCCUPANCY RATES, TOURIST ARRIVALS, 2009 - 2010

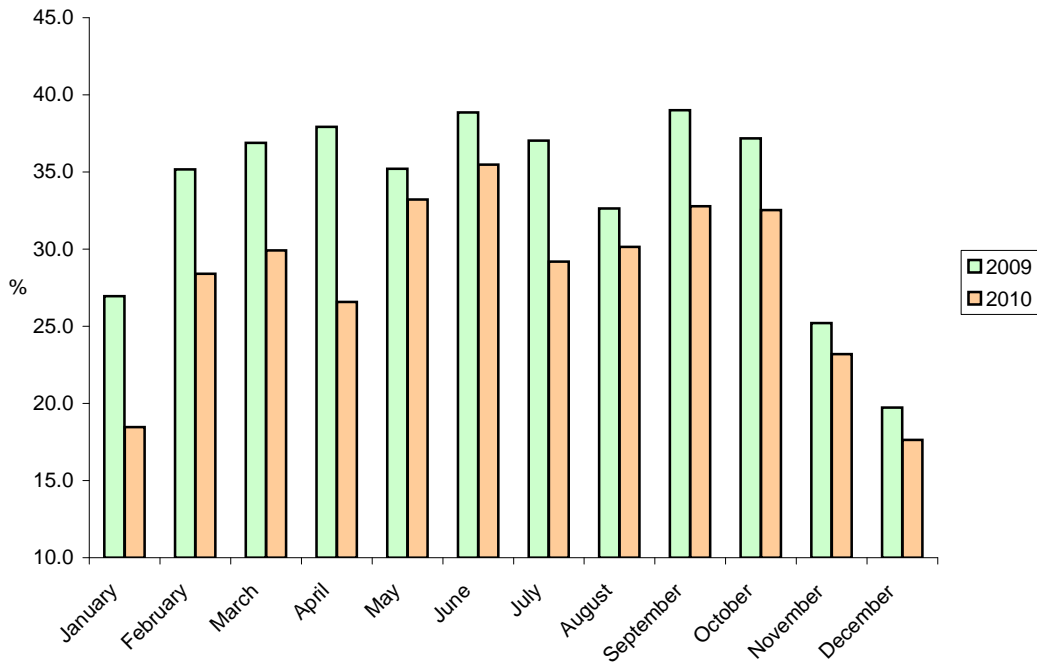


Table 4(a): Number of Arrivals by Month, 1984 - 1990

ALL ARRIVALS

(000's)

<u>MONTH</u>	<u>1984</u>	<u>1985</u>	<u>1986</u>	<u>1987</u>	<u>1988</u>	<u>1989</u>	<u>1990</u>
JANUARY	1.8	2.6	3.1	4.1	4.6	3.4	3.4
FEBRUARY	2.5	4.5	4.0	4.6	4.7	4.3	4.1
MARCH	2.6	4.9	4.6	6.3	6.3	5.2	7.9
APRIL	2.9	4.6	4.4	6.2	6.1	5.3	8.4
MAY	3.8	4.6	5.7	5.8	6.0	4.6	6.0
JUNE	2.8	4.6	5.1	5.1	5.8	5.0	5.3
JULY	3.3	5.2	4.5	4.4	5.4	6.6	6.3
AUGUST	3.4	5.4	5.2	5.1	5.3	5.9	4.6
SEPTEMBER	3.5	5.4	5.5	6.2	5.8	7.4	5.8
OCTOBER	4.0	5.1	5.0	5.3	4.9	7.7	5.0
NOVEMBER	3.0	4.6	4.9	6.0	5.8	6.7	4.1
DECEMBER	2.1	3.6	4.6	5.2	4.2	5.8	3.9
TOTAL	35.7	55.1	56.6	64.3	64.9	67.9	64.8

TOURIST ARRIVALS

(000's)

<u>MONTH</u>	<u>1984</u>	<u>1985</u>	<u>1986</u>	<u>1987</u>	<u>1988</u>	<u>1989</u>	<u>1990</u>
JANUARY	1.1	1.0	2.4	3.7	3.2	2.4	2.0
FEBRUARY	1.3	2.7	2.9	3.5	3.6	3.5	2.4
MARCH	1.7	3.6	3.8	5.0	4.7	4.1	3.0
APRIL	1.6	3.3	3.6	5.0	4.8	4.1	3.4
MAY	2.0	3.7	4.0	3.8	4.6	3.6	2.8
JUNE	2.1	3.5	3.9	3.5	4.0	4.2	2.3
JULY	2.1	3.8	3.4	3.6	3.6	3.9	3.1
AUGUST	2.3	4.3	4.0	4.1	3.6	4.1	2.5
SEPTEMBER	2.6	4.1	4.4	4.8	3.8	4.4	3.1
OCTOBER	2.7	3.5	4.2	4.8	3.6	5.3	2.6
NOVEMBER	2.0	3.5	4.3	4.8	3.6	4.4	2.1
DECEMBER	1.2	2.4	2.9	3.4	2.6	3.5	2.0
TOTAL	22.7	39.4	43.8	50.0	45.7	47.5	31.3

Note: Yearly totals have been rounded off and need not necessarily equal the sum of the rounded-off monthly figures.

Table 4(b): Number of Arrivals by Month, 1991 - 1997

ALL ARRIVALS

(000's)

<u>MONTH</u>	<u>1991</u>	<u>1992</u>	<u>1993</u>	<u>1994</u>	<u>1995</u>	<u>1996</u>	<u>1997</u>
JANUARY	3.4	2.3	1.9	2.5	2.0	2.8	2.4
FEBRUARY	3.4	3.0	2.4	2.4	2.8	3.4	3.2
MARCH	3.9	3.4	2.9	3.1	3.4	4.0	3.3
APRIL	3.6	3.6	3.0	3.1	4.0	4.1	3.9
MAY	4.2	4.0	3.8	3.9	3.8	4.2	4.8
JUNE	3.2	4.1	3.5	3.3	3.9	4.1	4.7
JULY	3.9	3.8	3.3	3.4	4.6	3.8	4.3
AUGUST	3.5	3.6	3.3	3.3	4.4	3.9	5.5
SEPTEMBER	4.3	4.1	4.4	4.3	5.7	4.7	5.4
OCTOBER	4.7	3.9	4.5	3.9	4.1	4.3	3.9
NOVEMBER	2.6	2.8	3.5	2.5	3.1	3.3	3.8
DECEMBER	2.5	2.4	2.5	2.2	3.2	3.5	3.2
TOTAL	43.2	41.0	39.1	37.9	45.1	46.1	48.4

TOURIST ARRIVALS

(000's)

<u>MONTH</u>	<u>1991</u>	<u>1992</u>	<u>1993</u>	<u>1994</u>	<u>1995</u>	<u>1996</u>	<u>1997</u>
JANUARY	1.9	1.6	1.5	1.7	1.6	2.0	1.5
FEBRUARY	1.9	2.2	1.5	1.7	2.2	2.5	1.9
MARCH	2.3	2.7	2.1	2.1	2.4	2.7	1.9
APRIL	2.1	2.8	2.1	2.1	2.8	3.0	2.2
MAY	2.4	2.9	2.6	2.4	2.6	2.6	2.8
JUNE	2.1	2.8	2.4	2.3	2.7	2.6	2.7
JULY	2.5	2.6	2.2	2.4	3.3	2.7	2.8
AUGUST	2.4	2.9	2.5	2.3	3.1	3.0	3.3
SEPTEMBER	2.4	2.6	2.9	2.9	4.1	3.0	3.1
OCTOBER	2.5	2.7	2.9	2.7	3.2	3.1	2.8
NOVEMBER	1.6	2.0	2.3	1.7	2.5	2.2	2.0
DECEMBER	1.7	1.9	1.9	1.6	2.5	2.5	1.9
TOTAL	26.0	29.9	27.0	25.9	33.1	31.9	28.9

Note: Yearly totals have been rounded off and need not necessarily equal the sum of the rounded-off monthly figures.

Table 4(c): Number of Arrivals by Month, 1998 - 2004

ALL ARRIVALS

(000's)

<u>MONTH</u>	<u>1998</u>	<u>1999</u>	<u>2000</u>	<u>2001</u>	<u>2002</u>	<u>2003</u>	<u>2004</u>
JANUARY	3.0	2.6	2.2	3.1	3.2	3.7	3.8
FEBRUARY	2.8	2.6	2.8	3.3	4.1	4.4	4.4
MARCH	3.1	3.6	3.9	4.5	4.6	5.4	5.5
APRIL	3.4	3.7	4.2	4.3	4.5	5.0	4.7
MAY	3.8	3.6	4.8	5.0	5.1	5.6	5.7
JUNE	3.5	3.8	4.8	5.0	4.3	5.9	5.5
JULY	3.4	3.4	4.0	5.0	5.8	5.2	5.3
AUGUST	4.2	4.3	4.6	5.3	5.8	5.9	5.6
SEPTEMBER	4.0	4.2	5.6	5.4	6.6	5.8	6.2
OCTOBER	4.2	4.3	4.8	5.1	6.2	5.6	5.6
NOVEMBER	3.6	3.7	3.9	4.3	5.1	5.4	5.4
DECEMBER	2.8	2.4	3.3	3.5	4.1	3.9	3.9
TOTAL	41.6	42.1	48.9	53.8	59.4	61.8	61.7

TOURIST ARRIVALS

(000's)

<u>MONTH</u>	<u>1998</u>	<u>1999</u>	<u>2000</u>	<u>2001</u>	<u>2002</u>	<u>2003</u>	<u>2004</u>
JANUARY	1.6	1.7	1.5	2.3	2.3	2.3	2.7
FEBRUARY	1.7	1.7	1.9	2.4	3.0	2.9	3.0
MARCH	2.1	2.3	2.8	3.2	3.5	3.6	3.8
APRIL	2.3	2.3	3.0	3.1	3.2	3.2	3.4
MAY	2.5	2.5	3.5	3.5	3.8	3.5	4.4
JUNE	2.4	2.5	3.6	3.4	3.0	3.7	3.8
JULY	2.3	2.2	2.9	3.7	4.0	3.5	3.9
AUGUST	3.0	2.8	3.5	4.1	4.1	4.1	4.2
SEPTEMBER	3.0	2.7	4.1	4.1	4.7	4.0	4.6
OCTOBER	2.9	3.0	3.6	3.8	4.0	3.9	4.1
NOVEMBER	2.4	2.3	2.9	3.4	3.3	3.5	3.8
DECEMBER	1.8	1.7	2.4	2.5	2.7	2.6	2.8
TOTAL	27.9	27.7	35.9	39.4	41.5	40.8	44.5

Note: Yearly totals have been rounded off and need not necessarily equal the sum of the rounded-off monthly figures.

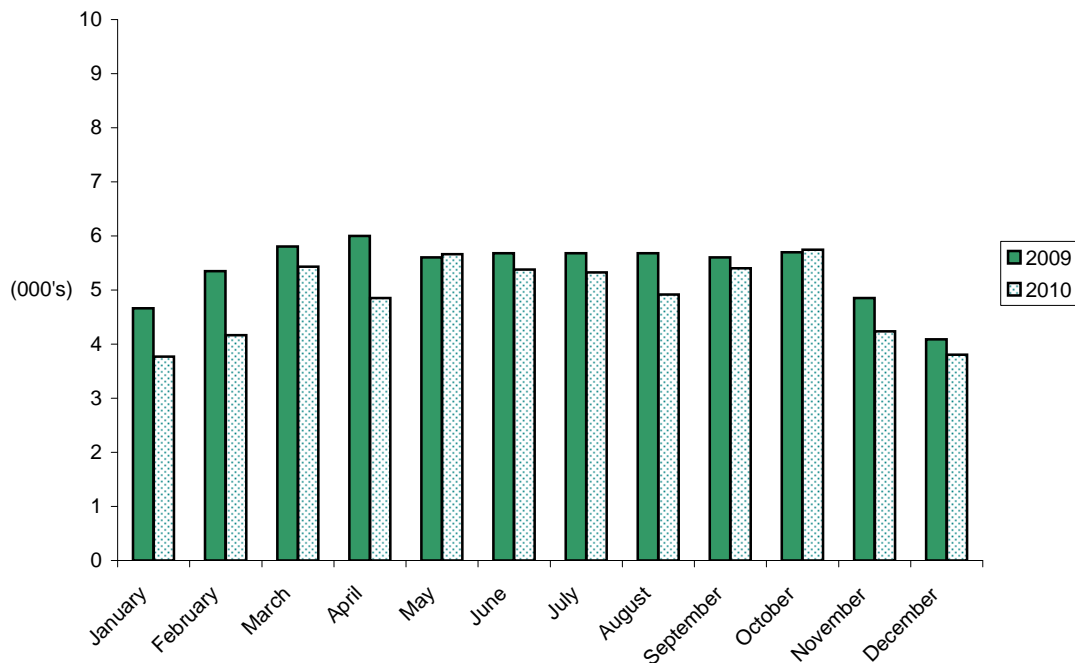
Table 4(d): Number of Arrivals by Month, 2005 - 2010

ALL ARRIVALS

(000's)

<u>MONTH</u>	<u>2005</u>	<u>2006</u>	<u>2007</u>	<u>2008</u>	<u>2009</u>	<u>2010</u>
JANUARY	4.0	4.3	3.9	5.0	4.7	3.8
FEBRUARY	4.6	4.5	4.1	5.1	5.3	4.2
MARCH	5.0	5.5	4.6	5.4	5.8	5.4
APRIL	5.1	5.3	5.0	6.1	6.0	4.9
MAY	5.7	5.7	5.9	6.9	5.6	5.7
JUNE	5.1	5.5	5.7	5.7	5.7	5.4
JULY	5.0	5.0	5.4	6.4	5.7	5.3
AUGUST	5.5	4.5	6.3	7.1	5.7	4.9
SEPTEMBER	5.7	5.4	6.3	6.5	5.6	5.4
OCTOBER	5.3	5.4	6.8	6.4	5.7	5.7
NOVEMBER	4.4	4.4	5.5	4.9	4.9	4.2
DECEMBER	3.7	3.8	4.3	4.3	4.1	3.8
TOTAL	58.8	59.2	63.7	69.6	64.7	58.7

ALL ARRIVALS AT HOTELS, 2009 - 2010



Note: Yearly totals have been rounded off and need not necessarily equal the sum of the rounded-off monthly figures.

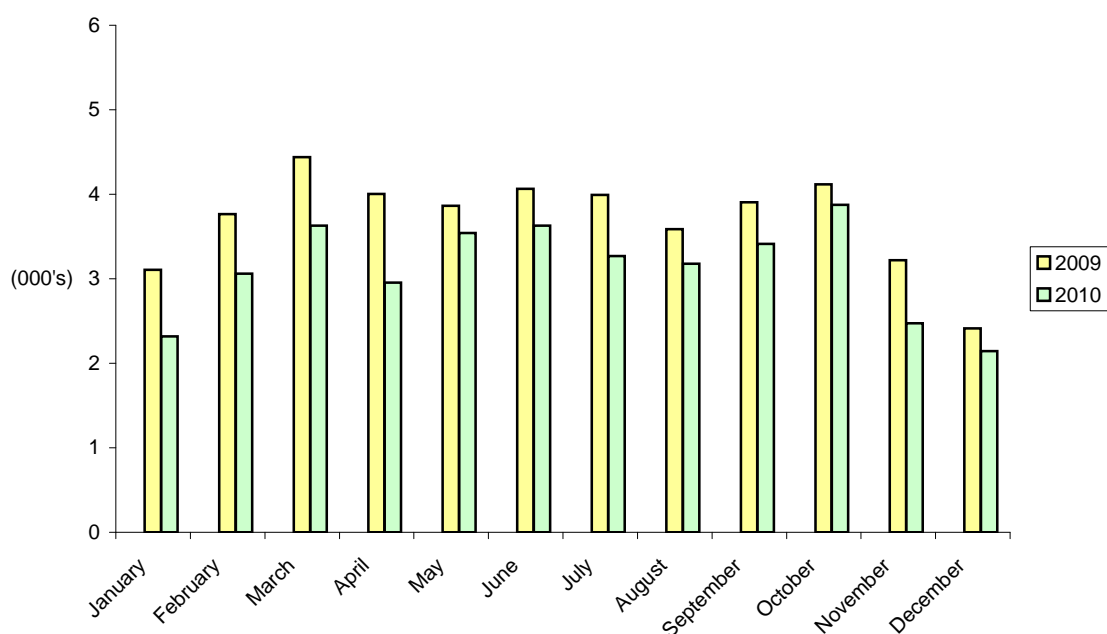
Table 4(e): Number of Arrivals by Month, 2005 - 2010

TOURIST ARRIVALS

(000's)

<u>MONTH</u>	<u>2005</u>	<u>2006</u>	<u>2007</u>	<u>2008</u>	<u>2009</u>	<u>2010</u>
JANUARY	2.8	2.5	2.4	3.2	3.1	2.3
FEBRUARY	3.3	2.6	2.3	3.0	3.8	3.1
MARCH	3.7	3.6	3.1	3.5	4.4	3.6
APRIL	3.6	3.6	3.1	4.1	4.0	3.0
MAY	4.3	4.2	3.4	4.2	3.9	3.5
JUNE	3.8	3.9	3.7	3.8	4.1	3.6
JULY	3.5	3.2	3.6	4.3	4.0	3.3
AUGUST	4.0	3.2	3.8	3.8	3.6	3.2
SEPTEMBER	4.1	3.8	4.0	4.0	3.9	3.4
OCTOBER	3.8	3.9	4.6	4.1	4.1	3.9
NOVEMBER	2.7	3.0	3.5	3.5	3.2	2.5
DECEMBER	2.2	2.2	2.3	2.5	2.4	2.1
TOTAL	41.9	39.8	39.8	44.0	44.5	37.5

TOURIST ARRIVALS AT HOTELS, 2009 - 2010



Note: Yearly totals have been rounded off and need not necessarily equal the sum of the rounded-off monthly figures.

Table 5(a): Guest Nights Sold/Offered, % Sleeper Occupancy, 1984 - 1987

<u>MONTH</u>	<u>ALL ARRIVALS</u>											
	<u>(000's)</u>				<u>(000's)</u>				<u>%</u>			
	<u>GUEST NIGHTS SOLD</u>				<u>GUEST NIGHTS OFFERED</u>				<u>SLEEPER OCCUPANCY</u>			
	<u>1984</u>	<u>1985</u>	<u>1986</u>	<u>1987</u>	<u>1984</u>	<u>1985</u>	<u>1986</u>	<u>1987</u>	<u>1984</u>	<u>1985</u>	<u>1986</u>	<u>1987</u>
JANUARY	9	11	13	19	46	45	43	46	20.7	24.3	30.1	42.1
FEBRUARY	13	18	15	18	43	41	38	42	30.0	42.7	39.0	43.9
MARCH	15	25	21	26	47	46	43	46	32.5	54.0	48.7	57.5
APRIL	18	25	18	24	45	45	42	43	39.9	56.8	42.0	55.6
MAY	23	23	25	25	46	47	45	45	50.5	50.3	57.2	55.7
JUNE	23	31	29	22	45	45	43	44	50.8	69.4	67.9	49.1
JULY	22	28	23	20	45	48	44	45	50.1	58.0	51.8	44.5
AUGUST	25	32	27	26	47	48	46	45	53.0	67.7	59.7	57.7
SEPTEMBER	27	32	29	29	44	46	44	45	61.0	68.2	64.8	65.6
OCTOBER	25	27	26	26	46	48	45	44	53.2	55.6	59.3	58.8
NOVEMBER	15	17	23	24	45	46	43	44	32.3	36.9	54.1	54.4
DECEMBER	11	13	17	20	47	47	44	46	22.9	27.3	38.5	42.5
TOTAL	226	282	266	279	546	552	520	535	41.3	51.0	51.3	52.3

Table 5(b): Guest Nights Sold/Offered, % Sleeper Occupancy, 1988 - 1991

<u>MONTH</u>	<u>ALL ARRIVALS</u>											
	<u>(000's)</u>				<u>(000's)</u>				<u>%</u>			
	<u>GUEST NIGHTS SOLD</u>				<u>GUEST NIGHTS OFFERED</u>				<u>SLEEPER OCCUPANCY</u>			
	<u>1988</u>	<u>1989</u>	<u>1990</u>	<u>1991</u>	<u>1988</u>	<u>1989</u>	<u>1990</u>	<u>1991</u>	<u>1988</u>	<u>1989</u>	<u>1990</u>	<u>1991</u>
JANUARY	16	15	11	12	46	42	37	40	35.8	35.2	31.2	29.4
FEBRUARY	19	18	14	13	44	40	37	37	42.6	46.0	37.3	34.5
MARCH	26	22	19	17	48	42	42	44	53.6	52.0	45.3	37.5
APRIL	26	23	23	14	45	42	41	41	57.1	54.8	55.4	34.0
MAY	26	19	21	17	47	44	42	41	55.1	41.9	50.4	40.2
JUNE	29	19	15	16	47	43	39	44	61.6	43.9	37.3	35.8
JULY	27	20	18	16	48	43	42	43	55.8	46.8	43.8	37.9
AUGUST	24	19	15	16	48	43	41	40	50.4	45.1	35.2	41.2
SEPTEMBER	26	19	18	17	44	42	41	44	60.4	46.0	44.4	39.2
OCTOBER	26	19	18	18	46	40	40	43	56.4	46.2	44.5	42.5
NOVEMBER	22	14	12	13	43	38	40	41	51.4	38.2	30.2	31.1
DECEMBER	19	13	13	10	45	42	39	45	42.6	31.2	32.4	22.4
TOTAL	286	220	197	178	551	501	481	502	52.0	44.0	40.8	35.5

Note: Yearly totals have been rounded off and need not necessarily equal the sum of the rounded-off monthly figures.

Table 5(c): Guest Nights Sold/Offered, % Sleeper Occupancy, 1992 - 1995**ALL ARRIVALS**

<u>MONTH</u>	<u>(000's)</u>				<u>(000's)</u>				<u>%</u>			
	<u>GUEST NIGHTS SOLD</u>				<u>GUEST NIGHTS OFFERED</u>				<u>SLEEPER OCCUPANCY</u>			
	<u>1992</u>	<u>1993</u>	<u>1994</u>	<u>1995</u>	<u>1992</u>	<u>1993</u>	<u>1994</u>	<u>1995</u>	<u>1992</u>	<u>1993</u>	<u>1994</u>	<u>1995</u>
JANUARY	9	7	10	6	42	33	34	32	20.6	21.5	29.4	19.0
FEBRUARY	9	9	9	10	41	30	30	28	22.8	30.1	31.3	34.9
MARCH	14	12	12	10	46	33	33	31	29.6	36.2	37.2	33.4
APRIL	14	12	12	13	42	32	31	25	32.6	38.3	39.2	49.5
MAY	15	16	15	13	43	34	35	31	35.6	45.6	42.5	41.4
JUNE	16	15	14	14	47	32	33	30	34.8	48.0	40.6	46.3
JULY	16	14	15	15	45	32	35	32	35.2	41.8	42.4	48.2
AUGUST	14	14	13	15	44	33	35	32	32.2	44.0	37.0	46.2
SEPTEMBER	16	18	16	18	41	32	33	31	39.7	56.2	48.9	58.0
OCTOBER	15	17	15	13	42	34	35	32	34.6	50.9	43.9	41.1
NOVEMBER	10	13	9	9	32	32	33	31	32.6	39.4	27.8	28.1
DECEMBER	9	10	9	9	33	33	34	32	27.0	29.6	25.2	26.7
TOTAL	157	157	149	144	497	391	401	369	31.6	40.2	37.2	39.2

Table 5(d): Guest Nights Sold/Offered, % Sleeper Occupancy, 1996 - 1999**ALL ARRIVALS**

<u>MONTH</u>	<u>(000's)</u>				<u>(000's)</u>				<u>%</u>			
	<u>GUEST NIGHTS SOLD</u>				<u>GUEST NIGHTS OFFERED</u>				<u>SLEEPER OCCUPANCY</u>			
	<u>1996</u>	<u>1997</u>	<u>1998</u>	<u>1999</u>	<u>1996</u>	<u>1997</u>	<u>1998</u>	<u>1999</u>	<u>1996</u>	<u>1997</u>	<u>1998</u>	<u>1999</u>
JANUARY	8	8	7	8	32	31	30	29	24.9	24.1	24.8	28.8
FEBRUARY	9	10	9	9	30	29	25	26	29.9	34.1	35.4	34.2
MARCH	12	10	11	13	32	31	28	29	36.3	33.0	38.8	45.5
APRIL	12	11	11	13	31	31	26	29	39.1	36.3	42.4	44.3
MAY	14	14	12	13	32	32	27	29	43.0	45.0	45.6	43.7
JUNE	13	13	13	14	30	30	28	29	37.2	44.4	45.9	49.1
JULY	12	14	13	13	31	31	29	29	39.0	44.1	43.9	44.5
AUGUST	13	16	16	16	31	31	29	29	42.3	51.3	54.4	56.3
SEPTEMBER	16	16	17	16	31	31	28	29	51.9	50.7	59.8	56.9
OCTOBER	13	14	15	15	31	31	29	31	42.8	44.1	50.2	50.0
NOVEMBER	10	10	12	14	30	31	28	30	31.3	31.7	43.8	46.0
DECEMBER	9	9	9	8	31	31	29	31	29.0	28.2	32.2	25.6
TOTAL	141	144	144	154	372	370	336	351	37.8	39.0	43.1	43.8

Note: Yearly totals have been rounded off and need not necessarily equal the sum of the rounded-off monthly figures.

Table 5(e): Guest Nights Sold/Offered, % Sleeper Occupancy, 2000 - 2003**ALL ARRIVALS**

<u>MONTH</u>	<u>(000's)</u>				<u>(000's)</u>				<u>%</u>			
	<u>GUEST NIGHTS SOLD</u>				<u>GUEST NIGHTS OFFERED</u>				<u>SLEEPER OCCUPANCY</u>			
	<u>2000</u>	<u>2001</u>	<u>2002</u>	<u>2003</u>	<u>2000</u>	<u>2001</u>	<u>2002</u>	<u>2003</u>	<u>2000</u>	<u>2001</u>	<u>2002</u>	<u>2003</u>
JANUARY	6	8	9	10	31	31	31	31	20.0	27.0	30.5	33.1
FEBRUARY	9	11	12	13	29	28	28	28	30.4	40.0	42.9	45.5
MARCH	12	15	15	16	31	31	31	31	37.5	47.9	47.7	51.8
APRIL	14	15	14	15	30	30	30	30	45.0	48.4	46.3	51.1
MAY	19	17	16	17	31	31	31	31	60.3	55.0	51.3	54.4
JUNE	17	18	13	18	30	30	30	30	56.6	58.3	43.6	60.9
JULY	16	17	18	16	31	31	31	31	50.2	53.5	56.8	53.2
AUGUST	16	18	18	18	31	31	31	31	51.8	57.4	58.8	58.2
SEPTEMBER	19	20	21	20	31	30	30	30	61.7	64.6	69.3	64.8
OCTOBER	15	18	19	18	31	31	31	31	48.7	57.3	61.3	57.0
NOVEMBER	12	13	15	15	30	30	30	30	38.9	43.5	50.9	49.5
DECEMBER	11	11	11	11	31	31	31	31	34.1	34.1	36.4	34.6
TOTAL	164	179	182	188	368	366	367	367	44.6	48.9	49.7	51.2

Table 5(f): Guest Nights Sold/Offered, % Sleeper Occupancy, 2004 - 2007**ALL ARRIVALS**

<u>MONTH</u>	<u>(000's)</u>				<u>(000's)</u>				<u>%</u>			
	<u>GUEST NIGHTS SOLD</u>				<u>GUEST NIGHTS OFFERED</u>				<u>SLEEPER OCCUPANCY</u>			
	<u>2004</u>	<u>2005</u>	<u>2006</u>	<u>2007</u>	<u>2004</u>	<u>2005</u>	<u>2006</u>	<u>2007</u>	<u>2004</u>	<u>2005</u>	<u>2006</u>	<u>2007</u>
JANUARY	11	12	12	12	29	31	34	38	36.7	38.7	34.2	31.3
FEBRUARY	13	15	13	14	29	27	31	35	45.2	58.0	41.2	41.7
MARCH	17	15	17	15	31	29	34	38	56.3	52.8	49.5	39.0
APRIL	15	17	16	17	30	28	33	37	50.0	59.3	49.3	46.8
MAY	18	18	17	16	31	30	34	36	57.8	60.4	50.7	45.5
JUNE	18	18	18	18	30	28	33	35	59.4	64.5	55.4	51.2
JULY	19	16	19	17	31	29	35	36	61.2	57.1	54.0	48.2
AUGUST	21	18	17	20	31	29	35	36	65.9	62.0	49.3	56.7
SEPTEMBER	22	20	20	21	31	28	34	35	71.7	70.1	57.9	59.7
OCTOBER	19	20	18	21	31	29	35	37	60.1	68.5	52.7	58.2
NOVEMBER	17	15	14	16	30	29	34	36	55.0	52.6	40.7	43.5
DECEMBER	13	11	12	11	31	32	35	37	40.1	33.7	33.7	30.9
TOTAL	202	196	193	200	366	349	406	434	55.1	56.2	47.3	45.9

Note: Yearly totals have been rounded off and need not necessarily equal the sum of the rounded-off monthly figures.

Table 5(g): Guest Nights Sold, 2008 - 2010

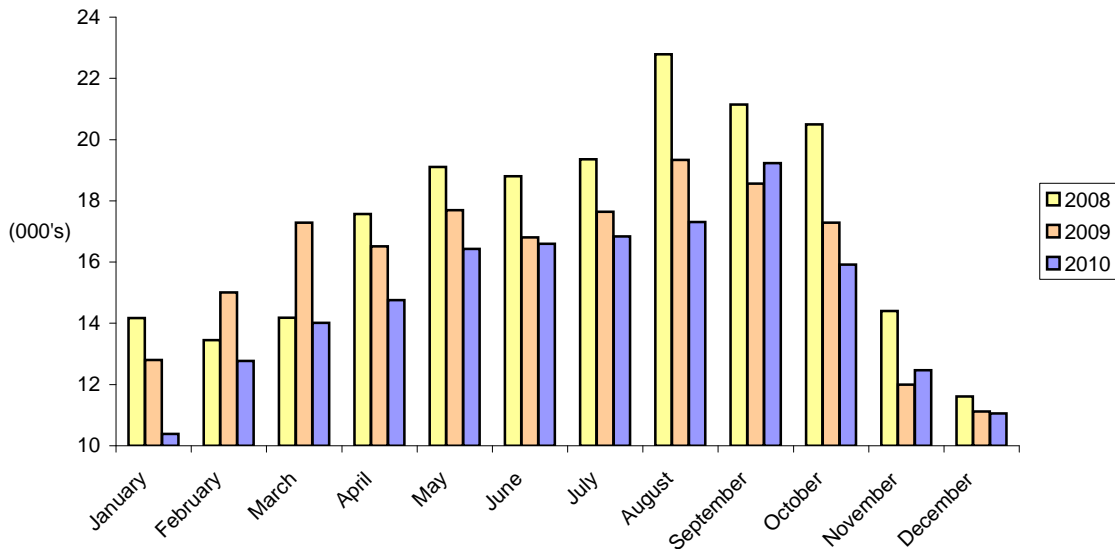
ALL ARRIVALS

GUEST NIGHTS SOLD

(000's)

<u>MONTH</u>	<u>2008</u>	<u>2009</u>	<u>2010</u>
JANUARY	14.2	12.8	10.4
FEBRUARY	13.5	15.0	12.8
MARCH	14.2	17.3	14.0
APRIL	17.6	16.5	14.8
MAY	19.1	17.7	16.4
JUNE	18.8	16.8	16.6
JULY	19.4	17.6	16.8
AUGUST	22.8	19.3	17.3
SEPTEMBER	21.1	18.6	19.2
OCTOBER	20.5	17.3	15.9
NOVEMBER	14.4	12.0	12.5
DECEMBER	11.6	11.1	11.1
TOTAL	207.1	192.1	177.8

GUEST NIGHTS SOLD, ALL ARRIVALS, 2008 - 2010



Note: Yearly totals have been rounded off and need not necessarily equal the sum of the rounded-off monthly figures.

Table 5(h): Guest Nights Offered, 2008 - 2010

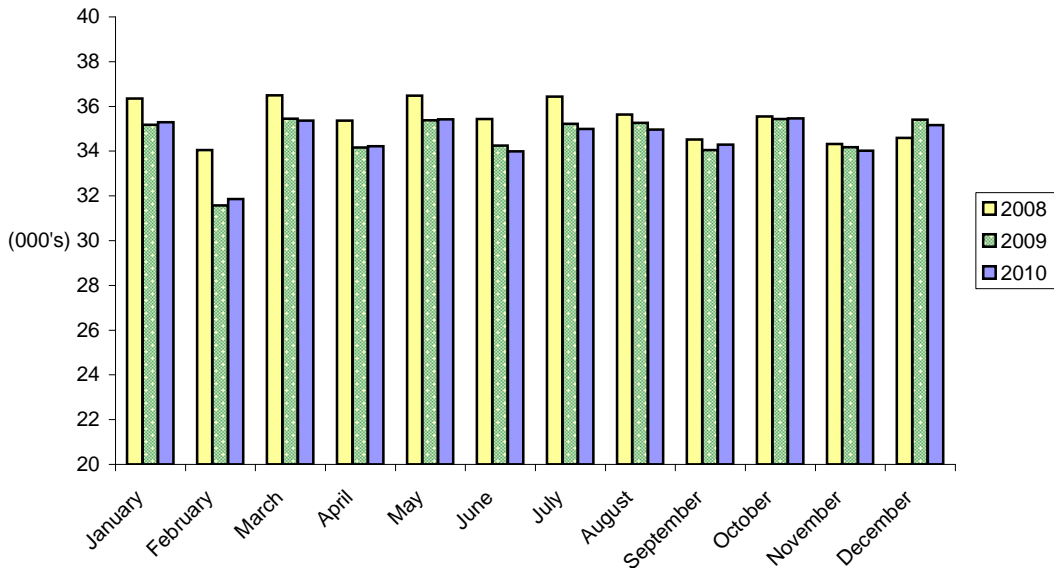
ALL ARRIVALS

GUEST NIGHTS OFFERED

(000's)

<u>MONTH</u>	<u>2008</u>	<u>2009</u>	<u>2010</u>
JANUARY	36.4	35.2	35.3
FEBRUARY	34.1	31.6	31.9
MARCH	36.5	35.5	35.4
APRIL	35.4	34.2	34.2
MAY	36.5	35.4	35.4
JUNE	35.4	34.3	34.0
JULY	36.4	35.2	35.0
AUGUST	35.6	35.3	35.0
SEPTEMBER	34.5	34.0	34.3
OCTOBER	35.5	35.4	35.5
NOVEMBER	34.3	34.2	34.0
DECEMBER	34.6	35.4	35.2
TOTAL	425.2	415.6	415.0

GUEST NIGHTS OFFERED, ALL ARRIVALS, 2008- 2010



Note: Yearly totals have been rounded off and need not necessarily equal the sum of the rounded-off monthly figures.

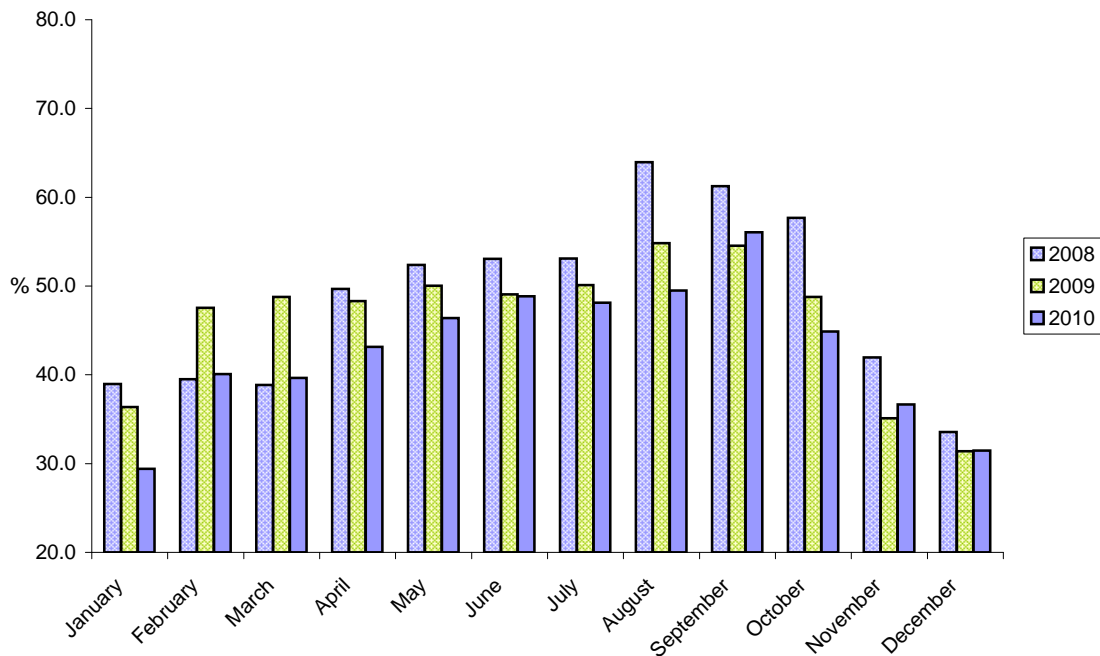
Table 5(i): % Sleeper Occupancy, 2008 - 2010

ALL ARRIVALS

%

<u>MONTH</u>	<u>2008</u>	<u>2009</u>	<u>2010</u>
JANUARY	39.0	36.4	29.4
FEBRUARY	39.5	47.5	40.1
MARCH	38.9	48.8	39.6
APRIL	49.7	48.3	43.1
MAY	52.4	50.0	46.4
JUNE	53.1	49.1	48.8
JULY	53.1	50.1	48.1
AUGUST	64.0	54.8	49.5
SEPTEMBER	61.3	54.5	56.1
OCTOBER	57.7	48.8	44.9
NOVEMBER	42.0	35.1	36.7
DECEMBER	33.6	31.4	31.5
TOTAL	48.7	46.2	42.8

% SLEEPER OCCUPANCY, ALL ARRIVALS, 2008 - 2010



Note: Yearly totals have been rounded off and need not necessarily equal the sum of the rounded-off monthly figures.

Table 6(a): Guest Nights Sold/Offered, % Sleeper Occupancy, 1984 - 1987

MONTH	<u>TOURIST ARRIVALS</u>											
	<u>(000's)</u>				<u>(000's)</u>				<u>%</u>			
	<u>GUEST NIGHTS SOLD</u>				<u>GUEST NIGHTS OFFERED</u>				<u>SLEEPER OCCUPANCY</u>			
	<u>1984</u>	<u>1985</u>	<u>1986</u>	<u>1987</u>	<u>1984</u>	<u>1985</u>	<u>1986</u>	<u>1987</u>	<u>1984</u>	<u>1985</u>	<u>1986</u>	<u>1987</u>
JANUARY	7	8	10	15	46	45	43	46	15.0	16.5	22.1	33.6
FEBRUARY	8	14	12	15	43	41	38	42	19.4	33.8	31.0	34.8
MARCH	12	19	16	21	47	46	43	46	24.6	42.2	38.1	46.3
APRIL	13	18	13	19	45	45	42	43	28.4	40.2	30.7	44.9
MAY	15	18	19	18	46	47	45	45	33.2	39.4	41.9	38.6
JUNE	18	24	23	16	45	45	43	44	40.6	52.9	52.8	36.9
JULY	18	23	18	15	45	48	44	45	40.0	47.5	41.0	34.3
AUGUST	20	27	21	19	47	48	46	45	42.0	57.0	46.3	42.5
SEPTEMBER	22	26	21	22	44	46	44	45	50.2	56.7	48.1	49.7
OCTOBER	19	19	20	21	46	48	45	44	41.0	40.2	45.3	46.4
NOVEMBER	11	13	18	18	45	46	43	44	24.6	28.4	41.7	41.8
DECEMBER	8	9	12	14	47	47	44	46	17.4	18.8	27.5	29.8
TOTAL	171	218	203	213	546	552	520	535	31.3	39.6	38.6	40.0

Table 6(b): Guest Nights Sold/Offered, % Sleeper Occupancy, 1988 - 1991

MONTH	<u>TOURIST ARRIVALS</u>											
	<u>(000's)</u>				<u>(000's)</u>				<u>%</u>			
	<u>GUEST NIGHTS SOLD</u>				<u>GUEST NIGHTS OFFERED</u>				<u>SLEEPER OCCUPANCY</u>			
	<u>1988</u>	<u>1989</u>	<u>1990</u>	<u>1991</u>	<u>1988</u>	<u>1989</u>	<u>1990</u>	<u>1991</u>	<u>1988</u>	<u>1989</u>	<u>1990</u>	<u>1991</u>
JANUARY	13	10	8	7	46	42	37	40	27.5	23.7	22.7	17.7
FEBRUARY	14	13	10	8	44	40	37	37	32.2	33.4	27.1	20.2
MARCH	19	15	13	8	48	42	42	44	39.8	36.2	31.0	19.1
APRIL	20	16	14	9	45	42	41	41	44.8	37.0	34.0	21.9
MAY	19	12	12	10	47	44	42	41	40.3	27.9	29.4	23.3
JUNE	20	14	10	8	47	43	39	44	43.5	32.7	24.3	19.4
JULY	19	13	12	10	48	43	42	43	39.2	30.6	27.4	23.2
AUGUST	17	13	10	8	48	43	41	40	34.5	30.6	23.1	21.3
SEPTEMBER	17	12	12	8	44	42	41	44	37.8	29.8	30.0	18.2
OCTOBER	17	14	11	10	46	40	40	43	37.9	34.0	27.8	23.3
NOVEMBER	14	11	8	7	43	38	40	41	32.5	27.6	19.5	16.4
DECEMBER	11	9	8	6	45	42	39	45	24.3	21.7	20.9	12.9
TOTAL	200	152	128	99	551	501	481	502	36.2	30.4	26.5	19.7

Note: Yearly totals have been rounded off and need not necessarily equal the sum of the rounded-off monthly figures.

Table 6(c): Guest Nights Sold/Offered, % Sleeper Occupancy, 1992 - 1995

<u>TOURIST ARRIVALS</u>												
	<u>(000's)</u>				<u>(000's)</u>				<u>%</u>			
	<u>GUEST NIGHTS SOLD</u>				<u>GUEST NIGHTS OFFERED</u>				<u>SLEEPER OCCUPANCY</u>			
<u>MONTH</u>	<u>1992</u>	<u>1993</u>	<u>1994</u>	<u>1995</u>	<u>1992</u>	<u>1993</u>	<u>1994</u>	<u>1995</u>	<u>1992</u>	<u>1993</u>	<u>1994</u>	<u>1995</u>
JANUARY	5	4	7	5	42	33	34	32	12.9	12.4	19.5	15.1
FEBRUARY	6	5	6	7	41	30	30	28	15.4	17.7	21.1	25.8
MARCH	9	8	8	8	46	33	33	31	19.3	23.0	24.5	26.4
APRIL	9	8	9	10	42	32	31	25	21.7	25.2	27.1	38.1
MAY	9	10	10	9	43	34	35	31	20.7	28.5	28.5	30.8
JUNE	10	10	9	11	47	32	33	30	22.0	32.7	28.3	37.2
JULY	10	8	10	11	45	32	35	32	21.3	26.2	28.7	36.2
AUGUST	10	10	8	11	44	33	35	32	22.0	30.5	25.6	34.8
SEPTEMBER	9	12	12	14	41	32	33	31	22.7	36.8	35.2	45.6
OCTOBER	9	11	11	11	42	34	35	32	20.8	33.2	30.4	34.1
NOVEMBER	6	9	7	7	32	32	33	31	20.1	27.8	20.6	23.8
DECEMBER	6	7	6	7	33	33	34	32	17.5	21.8	18.9	21.8
TOTAL	98	103	103	113	497	391	401	369	19.8	26.4	25.8	30.7

Table 6(d): Guest Nights Sold/Offered, % Sleeper Occupancy, 1996 - 1999

<u>TOURIST ARRIVALS</u>												
	<u>(000's)</u>				<u>(000's)</u>				<u>%</u>			
	<u>GUEST NIGHTS SOLD</u>				<u>GUEST NIGHTS OFFERED</u>				<u>SLEEPER OCCUPANCY</u>			
<u>MONTH</u>	<u>1996</u>	<u>1997</u>	<u>1998</u>	<u>1999</u>	<u>1996</u>	<u>1997</u>	<u>1998</u>	<u>1999</u>	<u>1996</u>	<u>1997</u>	<u>1998</u>	<u>1999</u>
JANUARY	5	5	4	5	32	31	30	29	16.4	15.2	14.4	17.2
FEBRUARY	7	6	5	6	30	29	25	26	22.8	22.3	21.4	21.8
MARCH	9	7	7	8	32	31	28	29	26.7	21.3	25.8	27.7
APRIL	10	7	7	8	31	31	26	29	30.9	23.9	28.8	27.3
MAY	10	10	8	9	32	32	27	29	30.9	29.9	30.6	30.0
JUNE	9	9	9	9	30	30	28	29	30.5	28.9	30.5	31.4
JULY	9	9	8	8	31	31	29	29	29.3	28.6	28.4	27.6
AUGUST	10	11	10	10	31	31	29	29	32.0	34.5	36.5	35.2
SEPTEMBER	10	11	12	10	31	31	28	29	34.3	34.8	41.5	36.2
OCTOBER	10	9	10	11	31	31	29	31	30.9	28.3	34.6	34.3
NOVEMBER	7	6	8	9	30	31	28	30	21.5	20.9	27.1	28.8
DECEMBER	6	6	6	5	31	31	29	31	20.7	18.9	19.5	17.3
TOTAL	101	95	94	98	372	370	336	351	27.2	25.6	28.2	27.9

Note: Yearly totals have been rounded off and need not necessarily equal the sum of the rounded-off monthly figures.

Table 6(e): Guest Nights Sold/Offered, % Sleeper Occupancy, 2000 - 2003

<u>TOURIST ARRIVALS</u>												
<u>MONTH</u>	<u>(000's)</u>				<u>(000's)</u>				<u>%</u>			
	<u>GUEST NIGHTS SOLD</u>				<u>GUEST NIGHTS OFFERED</u>				<u>SLEEPER OCCUPANCY</u>			
	<u>2000</u>	<u>2001</u>	<u>2002</u>	<u>2003</u>	<u>2000</u>	<u>2001</u>	<u>2002</u>	<u>2003</u>	<u>2000</u>	<u>2001</u>	<u>2002</u>	<u>2003</u>
JANUARY	4	6	6	6	31	31	31	31	13.0	19.3	20.4	20.6
FEBRUARY	6	8	8	8	29	28	28	28	20.0	26.9	28.8	29.2
MARCH	8	9	11	11	31	31	31	31	25.9	30.7	34.5	34.0
APRIL	9	9	10	10	30	30	30	30	30.8	29.1	33.0	31.5
MAY	12	11	11	11	31	31	31	31	39.1	34.9	36.5	34.5
JUNE	11	12	10	12	30	30	30	30	36.6	39.5	33.0	38.5
JULY	10	11	12	11	31	31	31	31	33.4	37.0	38.7	34.8
AUGUST	12	12	13	13	31	31	31	31	37.6	40.0	40.7	40.4
SEPTEMBER	14	14	15	14	31	30	30	30	44.3	46.3	48.7	46.5
OCTOBER	10	13	13	12	31	31	31	31	31.6	40.6	40.9	40.0
NOVEMBER	8	9	9	10	30	30	30	30	26.7	29.6	29.8	33.2
DECEMBER	7	7	7	6	31	31	31	31	21.6	22.1	22.9	20.9
TOTAL	111	121	125	123	368	366	367	367	30.1	33.0	34.0	33.7

Table 6(f): Guest Nights Sold/Offered, % Sleeper Occupancy, 2004 - 2007

<u>TOURIST ARRIVALS</u>												
<u>MONTH</u>	<u>(000's)</u>				<u>(000's)</u>				<u>%</u>			
	<u>GUEST NIGHTS SOLD</u>				<u>GUEST NIGHTS OFFERED</u>				<u>SLEEPER OCCUPANCY</u>			
	<u>2004</u>	<u>2005</u>	<u>2006</u>	<u>2007</u>	<u>2004</u>	<u>2005</u>	<u>2006</u>	<u>2007</u>	<u>2004</u>	<u>2005</u>	<u>2006</u>	<u>2007</u>
JANUARY	7	9	8	7	29	31	34	38	22.9	29.1	22.4	18.3
FEBRUARY	8	12	8	7	29	27	31	35	27.9	43.6	26.4	21.1
MARCH	11	12	11	9	31	29	34	38	37.0	42.6	31.2	23.1
APRIL	10	13	11	10	30	28	33	37	33.9	47.1	32.4	27.5
MAY	12	15	12	10	31	30	34	36	39.6	48.8	33.9	27.9
JUNE	11	15	13	11	30	28	33	35	37.4	52.2	37.8	30.8
JULY	15	13	12	10	31	29	35	36	47.4	43.7	34.9	26.8
AUGUST	16	13	13	11	31	29	35	36	50.7	46.1	35.8	29.7
SEPTEMBER	17	15	14	13	31	28	34	35	55.2	54.7	41.4	35.7
OCTOBER	15	16	13	14	31	29	35	37	48.2	53.4	38.0	36.9
NOVEMBER	13	10	9	9	30	29	34	36	41.5	36.0	27.2	23.7
DECEMBER	10	7	7	6	31	32	35	37	30.4	21.1	19.7	16.7
TOTAL	145	150	129	115	366	349	406	434	39.5	42.9	31.7	26.5

Note: Yearly totals have been rounded off and need not necessarily equal the sum of the rounded-off monthly figures.

Table 6(g): Guest Nights Sold, 2008 - 2010

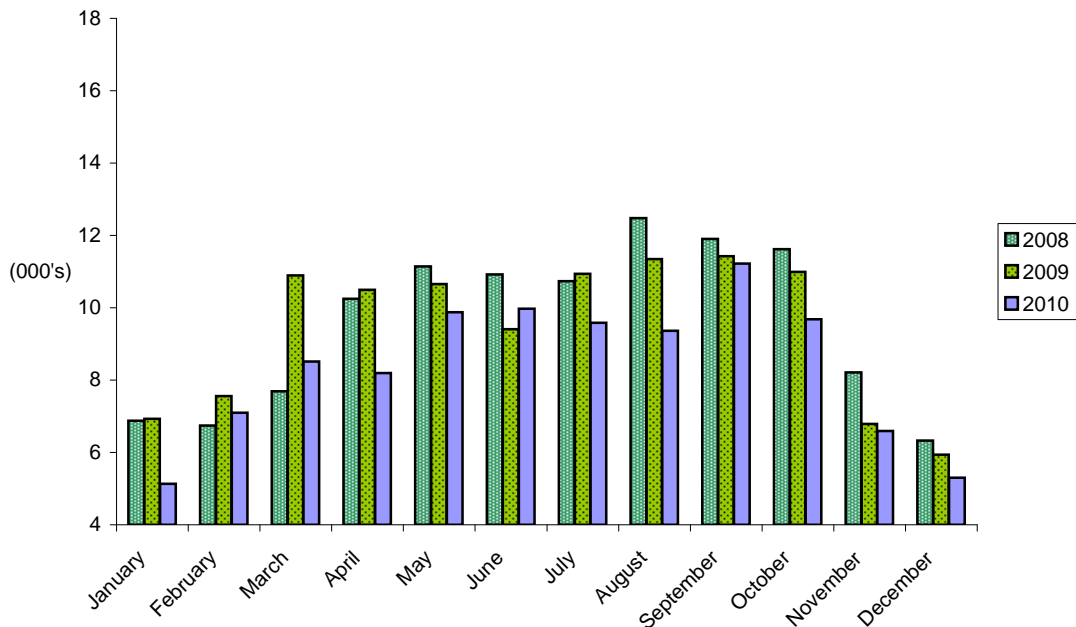
TOURIST ARRIVALS

GUEST NIGHTS SOLD

(000's)

<u>MONTH</u>	<u>2008</u>	<u>2009</u>	<u>2010</u>
JANUARY	6.9	6.9	5.1
FEBRUARY	6.7	7.6	7.1
MARCH	7.7	10.9	8.5
APRIL	10.2	10.5	8.2
MAY	11.1	10.7	9.9
JUNE	10.9	9.4	10.0
JULY	10.7	10.9	9.6
AUGUST	12.5	11.3	9.4
SEPTEMBER	11.9	11.4	11.2
OCTOBER	11.6	11.0	9.7
NOVEMBER	8.2	6.8	6.6
DECEMBER	6.3	5.9	5.3
TOTAL	114.9	113.3	100.5

GUEST NIGHTS SOLD, TOURIST ARRIVALS, 2008 - 2010



Note: Yearly totals have been rounded off and need not necessarily equal the sum of the rounded-off monthly figures.

Table 6(h): Guest Nights Offered, 2008 - 2010

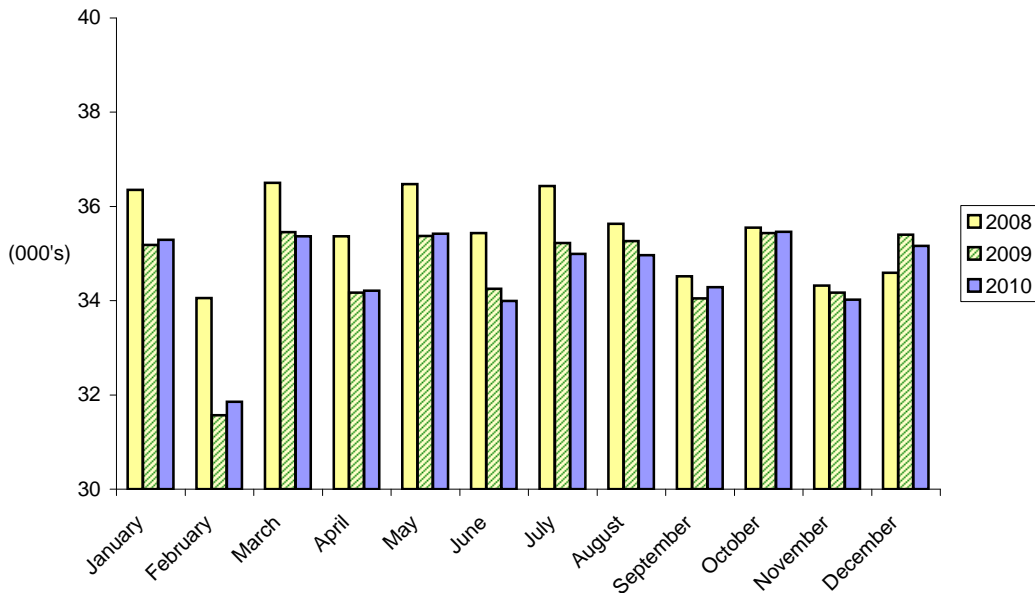
TOURIST ARRIVALS

GUEST NIGHTS OFFERED

(000's)

<u>MONTH</u>	<u>2008</u>	<u>2009</u>	<u>2010</u>
JANUARY	36.4	35.2	35.3
FEBRUARY	34.1	31.6	31.9
MARCH	36.5	35.5	35.4
APRIL	35.4	34.2	34.2
MAY	36.5	35.4	35.4
JUNE	35.4	34.3	34.0
JULY	36.4	35.2	35.0
AUGUST	35.6	35.3	35.0
SEPTEMBER	34.5	34.0	34.3
OCTOBER	35.5	35.4	35.5
NOVEMBER	34.3	34.2	34.0
DECEMBER	34.6	35.4	35.2
TOTAL	425.2	415.6	415.0

GUEST NIGHTS OFFERED, TOURIST ARRIVALS, 2008 - 2010



Note: Yearly totals have been rounded off and need not necessarily equal the sum of the rounded-off monthly figures.

Table 6(i): % Sleeper Occupancy, 2008 - 2010

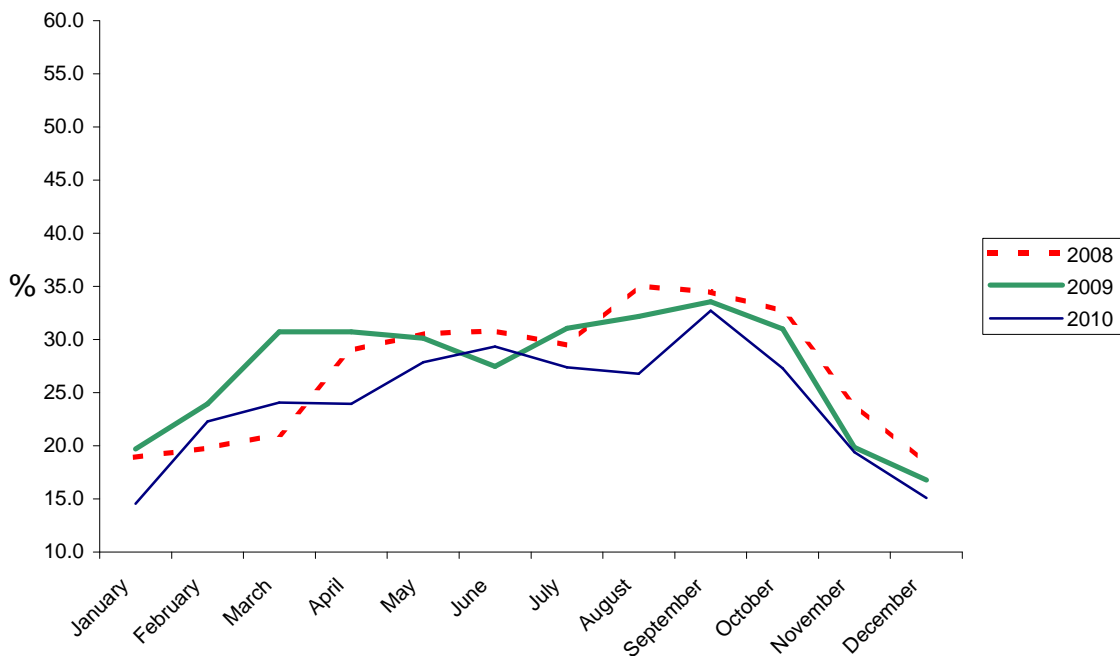
TOURIST ARRIVALS

SLEEPER OCCUPANCY

%

<u>MONTH</u>	<u>2008</u>	<u>2009</u>	<u>2010</u>
JANUARY	18.9	19.7	14.5
FEBRUARY	19.8	23.9	22.3
MARCH	21.1	30.7	24.1
APRIL	29.0	30.7	23.9
MAY	30.5	30.1	27.9
JUNE	30.8	27.5	29.3
JULY	29.5	31.1	27.4
AUGUST	35.0	32.2	26.8
SEPTEMBER	34.5	33.6	32.7
OCTOBER	32.7	31.0	27.3
NOVEMBER	23.9	19.9	19.4
DECEMBER	18.3	16.8	15.1
TOTAL	27.0	27.3	24.2

% SLEEPER OCCUPANCY, TOURIST ARRIVALS, 2008 - 2010



Note: Yearly totals have been rounded off and need not necessarily equal the sum of the rounded-off monthly figures.

Table 7(a): Average Length of Stay Per Person (Nights), 1999 - 2010

ALL ARRIVALS

<u>YEAR</u>	<u>JAN</u>	<u>FEB</u>	<u>MAR</u>	<u>APR</u>	<u>MAY</u>	<u>JUN</u>	<u>JUL</u>	<u>AUG</u>	<u>SEP</u>	<u>OCT</u>	<u>NOV</u>	<u>DEC</u>	<u>TOTAL</u>
1999	3.3	3.5	3.7	3.5	3.6	3.8	3.8	3.8	3.9	3.6	3.8	3.3	3.7
2000	2.9	3.2	3.0	3.2	3.9	3.5	3.9	3.5	3.4	3.1	3.0	3.2	3.4
2001	2.7	3.4	3.3	3.4	3.4	3.5	3.3	3.4	3.6	3.5	3.5	3.1	3.3
2002	3.0	2.9	3.2	3.1	3.1	3.0	3.1	3.1	3.2	3.1	3.0	2.8	3.1
2003	2.8	2.9	3.0	3.1	3.0	3.1	3.1	3.1	3.4	3.2	2.8	2.7	3.0
2004	2.9	2.9	3.2	3.2	3.1	3.2	3.6	3.7	3.5	3.4	3.1	3.2	3.3
2005	3.0	3.4	3.1	3.3	3.2	3.6	3.3	3.3	3.5	3.8	3.5	2.9	3.3
2006	2.8	2.9	3.1	3.1	3.0	3.4	3.8	3.8	3.6	3.4	3.1	3.0	3.2
2007	3.1	3.5	3.3	3.4	2.8	3.1	3.2	3.3	3.4	3.1	2.8	2.6	3.1
2008	2.8	2.7	2.6	2.9	2.8	3.3	3.0	3.2	3.3	3.2	2.9	2.7	3.0
2009	2.7	2.8	3.0	2.8	3.2	3.0	3.1	3.4	3.3	3.0	2.5	2.7	3.0
2010	2.8	3.1	2.6	3.0	2.9	3.1	3.2	3.5	3.6	2.8	2.9	2.9	3.0

AVERAGE LENGTH OF STAY, ALL ARRIVALS, 2008 - 2010

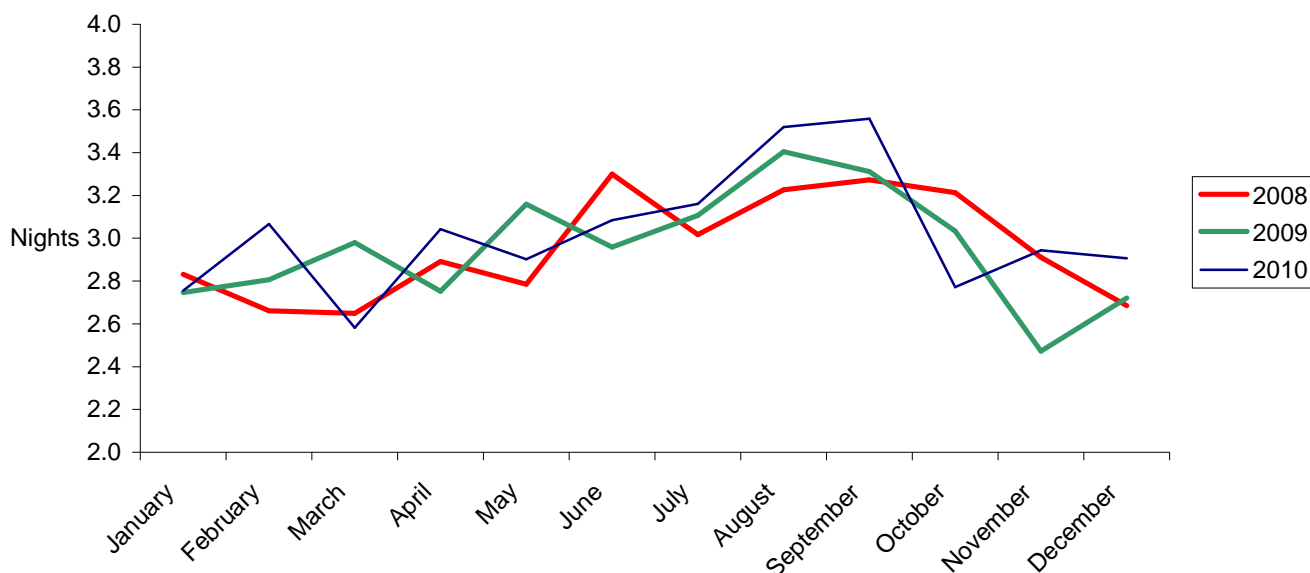


Table 7(b): Average Length of Stay Per Person (Nights), 1999 - 2010

TOURIST ARRIVALS

<u>YEAR</u>	<u>JAN</u>	<u>FEB</u>	<u>MAR</u>	<u>APR</u>	<u>MAY</u>	<u>JUN</u>	<u>JUL</u>	<u>AUG</u>	<u>SEP</u>	<u>OCT</u>	<u>NOV</u>	<u>DEC</u>	<u>TOTAL</u>
1999	3.0	3.4	3.5	3.4	3.5	3.6	3.6	3.6	3.9	3.6	3.8	3.2	3.5
2000	2.6	3.0	2.9	3.1	3.5	3.1	3.5	3.3	3.3	2.7	2.8	2.7	3.1
2001	2.6	3.2	3.0	2.9	3.1	3.5	3.1	3.0	3.4	3.3	2.6	2.6	3.1
2002	2.8	2.7	3.0	3.1	3.0	3.4	3.0	3.1	3.2	3.2	2.7	2.7	3.0
2003	2.8	2.9	3.0	2.9	3.0	3.2	3.1	3.1	3.5	3.2	2.8	2.4	3.0
2004	2.5	2.6	3.0	3.0	2.8	3.0	3.8	3.8	3.7	3.7	3.3	3.4	3.2
2005	3.2	3.6	3.4	3.7	3.4	3.8	3.6	3.3	3.8	4.0	3.8	3.0	3.6
2006	3.0	3.1	2.9	3.0	2.8	3.2	3.8	3.9	3.7	3.4	3.0	3.0	3.2
2007	2.9	3.2	2.9	3.2	3.0	2.9	2.7	2.8	3.1	2.9	2.4	2.6	2.9
2008	2.1	2.2	2.2	2.5	2.7	2.9	2.5	3.2	3.0	2.8	2.4	2.6	2.6
2009	2.2	2.0	2.5	2.6	2.8	2.3	2.7	3.2	2.9	2.7	2.1	2.5	2.5
2010	2.2	2.3	2.3	2.8	2.8	2.7	2.9	2.9	3.3	2.5	2.7	2.5	2.7

AVERAGE LENGTH OF STAY, TOURIST ARRIVALS, 2008 - 2010

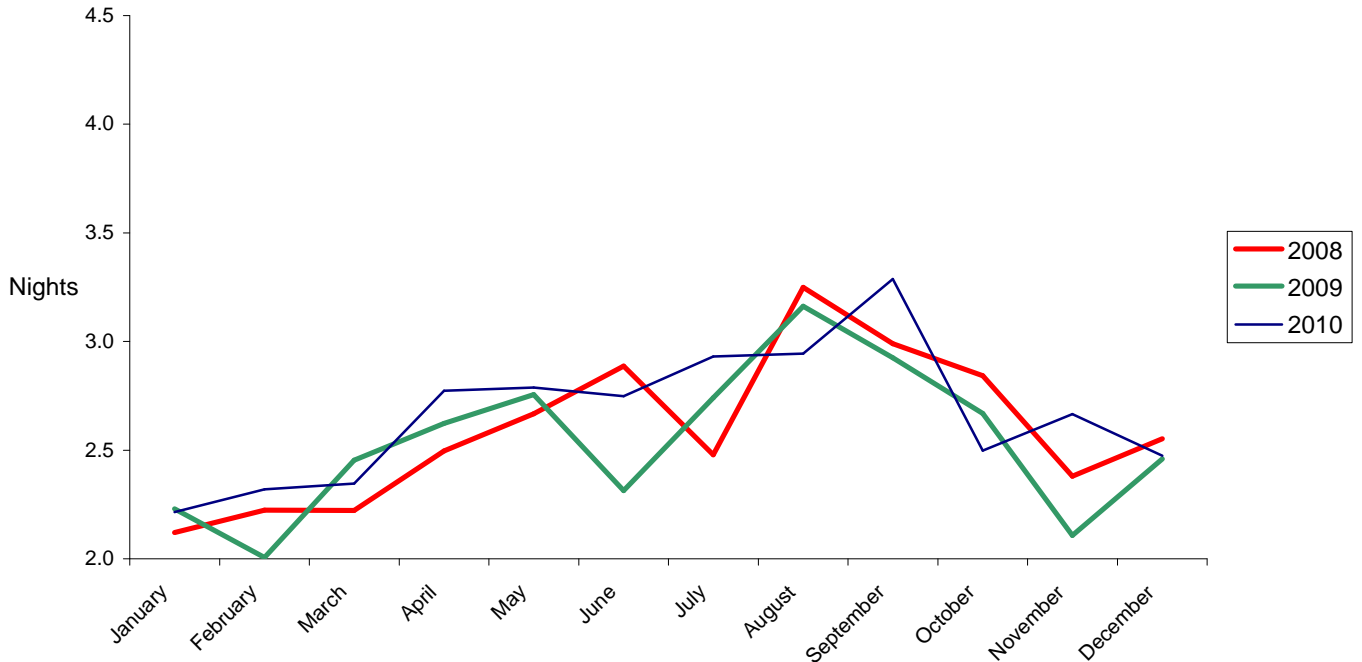


Table 8: Summary of Hotel Statistics, 1984- 2010

<u>YEAR</u>	<u>ARRIVALS AT HOTELS</u>	<u>GUEST NIGHTS SOLD</u>	<u>% SLEEPER OCCUPANCY</u>	<u>AV. LENGTH OF STAY (NIGHTS)</u>
1984	35,690	225,873	41.3	6.3
1985	55,119	281,525	51.0	5.1
1986	56,525	266,223	51.3	4.6
1987	64,349	279,377	52.3	4.3
1988	64,942	286,295	52.0	4.4
1989	67,934	220,083	44.0	3.2
1990	64,793	196,516	40.8	3.0
1991	43,193	178,053	35.5	4.1
1992	40,986	156,947	31.6	3.8
1993	39,123	157,215	40.2	4.0
1994	37,851	149,292	37.2	3.9
1995	45,056	144,453	39.2	3.2
1996	46,142	140,596	37.8	3.1
1997	48,420	143,972	39.0	3.0
1998	41,616	144,538	43.1	3.5
1999	42,031	153,583	43.7	3.7
2000	48,949	164,232	44.6	3.4
2001	53,776	178,951	48.9	3.3
2002	59,417	182,444	49.7	3.1
2003	61,743	187,631	51.2	3.0
2004	61,710	201,706	55.1	3.3
2005	58,796	195,827	56.2	3.3
2006	59,194	192,331	47.3	3.2
2007	63,691	199,529	45.9	3.1
2008	69,630	207,085	48.7	3.0
2009	64,691	192,060	46.2	3.0
2010	58,692	177,799	42.8	3.0

ALL ARRIVALS AT HOTELS, 1984 - 2010

