

GOVERNMENT OF GIBRALTAR

HOTEL OCCUPANCY

SURVEY

2008

STATISTICS OFFICE



GOVERNMENT OF GIBRALTAR

HOTEL OCCUPANCY SURVEY 2008

STATISTICS OFFICE

Government of Gibraltar
Statistics Office

Statistics Online

Copies of the Employment Survey Report can be obtained, free of charge from the Statistics Office and are also available electronically on the Gibraltar Government Website www.gibraltar.gov.gi.

Historical data can be downloaded from previous copies of the report available on-line.

Comments and requests for general information should be addressed to:

Statistics Office
99 Harbours Walk
The New Harbours
Or

E-mail: statistics@gibraltar.gov.gi
Tel: +350 20075515/ +350 20075490
Fax: +350 20051160

PREFACE

The Statistics (Hotel Occupancy Survey) Order 1971 requires that the Government Statistician prepares a report and summary of the findings of the Hotel Occupancy Survey to be laid before the Gibraltar Parliament.

This report contains a summary of the statistics collected for the years 1982 – 2008.

I must express my thanks to the establishments for their continued co-operation in the conduct of this Survey.

GOVERNMENT STATISTICIAN

FEBRUARY 2009

- C O N T E N T S -

A. Definitions and Notes

<u>TABLES</u>	<u>DESCRIPTION</u>	<u>PAGE</u>
1	General Analysis, 1982 - 2008	1
Chart	All Arrivals at Hotels, 1982 - 2008	2
Chart	% Room Occupancy, All Arrivals, 1989 - 2008	
Chart	% Sleeper Occupancy, All Arrivals, 1982 - 2008	3
Chart	Average Length of Stay, All Arrivals, 1982 - 2008	
2(a)	Room Nights Sold and Offered, 2002 - 2006 (All Arrivals)	4
2(b)	Room Nights Sold and Offered, 2007 - 2008 (All Arrivals)	5
Chart	Room Nights Sold, All Arrivals, 2007 - 2008	
2(c)	Room Nights Sold and Offered, 2002 - 2006 (Tourist Arrivals)	6
2(d)	Room Nights Sold and Offered, 2007 - 2008 (Tourist Arrivals)	7
Chart	Room Nights Sold, Tourist Arrivals, 2007 - 2008	
3(a)	% Room Occupancy Rates, 1998 - 2002	8
3(b)	% Room Occupancy Rates, All Arrivals, 2003 - 2008	9
Chart	% Room Occupancy Rates, All Arrivals, 2007 - 2008	
3(c)	% Room Occupancy Rates, Tourist Arrivals, 2003 - 2008	10
Chart	% Room Occupancy Rates, Tourist Arrivals, 2007 - 2008	
4(a)	Number of Arrivals by Month, 1982 - 1988	11
4(b)	Number of Arrivals by Month, 1989 - 1995	12
4(c)	Number of Arrivals by Month, 1996 - 2002	13
4(d)	Number of Arrivals by Month, 2003 - 2008 (All Arrivals)	14
Chart	All Arrivals at Hotels, 2007 - 2008	
4(e)	Number of Arrivals by Month, 2003 - 2008 (Tourist Arrivals)	15
Chart	Tourist Arrivals at Hotels, 2007 - 2008	
5(a)	Guest Nights Sold/Offered, % Sleeper Occupancy, 1982 - 1985 (All Arrivals)	16
5(b)	Guest Nights Sold/Offered, % Sleeper Occupancy, 1986 - 1989 (All Arrivals)	
5(c)	Guest Nights Sold/Offered, % Sleeper Occupancy, 1990 - 1993 (All Arrivals)	17
5(d)	Guest Nights Sold/Offered, % Sleeper Occupancy, 1994 - 1997 (All Arrivals)	
5(e)	Guest Nights Sold/Offered, % Sleeper Occupancy, 1998 - 2001 (All Arrivals)	18
5(f)	Guest Nights Sold/Offered, % Sleeper Occupancy, 2002 - 2005 (All Arrivals)	

- C O N T E N T S -

<u>TABLES</u>	<u>DESCRIPTION</u>	<u>PAGE</u>
5(g)	Guest Nights Sold, 2006 - 2008 (All Arrivals)	19
Chart 5(h)	Guest Nights Sold, All Arrivals, 2006 - 2008 Guest Nights Offered, 2006 - 2008 (All Arrivals)	20
Chart 5(i)	Guest Nights Offered, All Arrivals, 2006 - 2008 % Sleeper Occupancy, 2006 - 2008 (All Arrivals)	21
Chart 6(a)	% Sleeper Occupancy, All Arrivals, 2006 - 2008 Guest Nights Sold/Offered, % Sleeper Occupancy, 1982 - 1985 (Tourist Arrivals)	22
6(b)	Guest Nights Sold/Offered, % Sleeper Occupancy, 1986 - 1989 (Tourist Arrivals)	
6(c)	Guest Nights Sold/Offered, % Sleeper Occupancy, 1990 - 1993 (Tourist Arrivals)	23
6(d)	Guest Nights Sold/Offered, % Sleeper Occupancy, 1994 - 1997 (Tourist Arrivals)	
6(e)	Guest Nights Sold/Offered, % Sleeper Occupancy, 1998 - 2001 (Tourist Arrivals)	24
6(f)	Guest Nights Sold/Offered, % Sleeper Occupancy, 2002 - 2005 (Tourist Arrivals)	
6(g)	Guest Nights Sold, 2006 - 2008 (Tourist Arrivals)	25
Chart 6(h)	Guest Nights Sold, Tourist Arrivals, 2006 - 2008 Guest Nights Offered, 2006 - 2008 (Tourist Arrivals)	26
Chart 6(i)	Guest Nights Offered, Tourist Arrivals, 2006 - 2008 % Sleeper Occupancy, 2006 - 2008 (Tourist Arrivals)	27
Chart 7(a)	% Sleeper Occupancy, Tourist Arrivals, 2006 - 2008 Average Length of Stay Per Person (Nights), 1997 - 2008 (All Arrivals)	28
Chart 7(b)	Average Length of Stay, All Arrivals, 2006 - 2008 Average Length of Stay Per Person (Nights), 1997 - 2008 (Tourist Arrivals)	29
Chart Table 8	Average Length of Stay, Tourist Arrivals, 2006 - 2008 Summary of Hotel Statistics, 1982 - 2008	30
Chart	All Arrivals at Hotels, 1982 - 2008	

A. DEFINITIONS AND NOTES

- (a) Tourist: A tourist is a person who is primarily in Gibraltar for the purpose of a holiday. It is nevertheless up to the discretion of the individual hotels who to include under this category.
- (b) Guest Nights: Calculated on the basis of “one guest x one night”.
- (c) Room Nights: Calculated on the basis of “one room x one night”.
- (d) Sleeper Occupancy: Calculated as the percentage of guest nights sold over guest nights offered. It should be noted that this measure does not necessarily give an accurate indication of the ability of the hotel to accept more guests. e.g. one person staying in a room with two beds gives a 50% sleeper occupancy and a 100% room occupancy.
- (e) Room Occupancy: Calculated as the percentage of room nights sold over room nights offered.
- (f) Abbreviations:
 - GNS - Guest Nights Sold.
 - GNO - Guest Nights Offered.
 - RNS - Room Nights Sold.
 - RNO - Room Nights Offered.
- (g) In interpreting the figures it should be noted that:
 - (i) The Continental Hotel is included for the period January 1986 to July 2008.
 - (ii) The Sunrise Motel is included for the period January 1992 to December 1994.
 - (iii) As from September 1992, the Montarik Hotel is not included.
 - (iv) As from November 1992, the Gibraltar Beach Hotel is not included.
 - (v) The Cannon Hotel is included with effect from July 1995.
 - (vi) The Emile Youth Hostel, Governor’s Inn Apartments and Herald Travel Apartments are included with effect from January 2006.
 - (vii) The Sunrise Motel is included with effect from January 2007.
- (h) The survey is based on the figures provided by the Caleta Hotel, O’Callaghan Elliott Hotel, Rock Hotel, Bristol Hotel, Queens Hotel, Cannon Hotel, Continental Hotel, The Emile Youth Hostel, Governor’s Inn Apartments, Herald Travel Apartments and the Sunrise Motel.

Table 1: General Analysis, 1982 - 2008

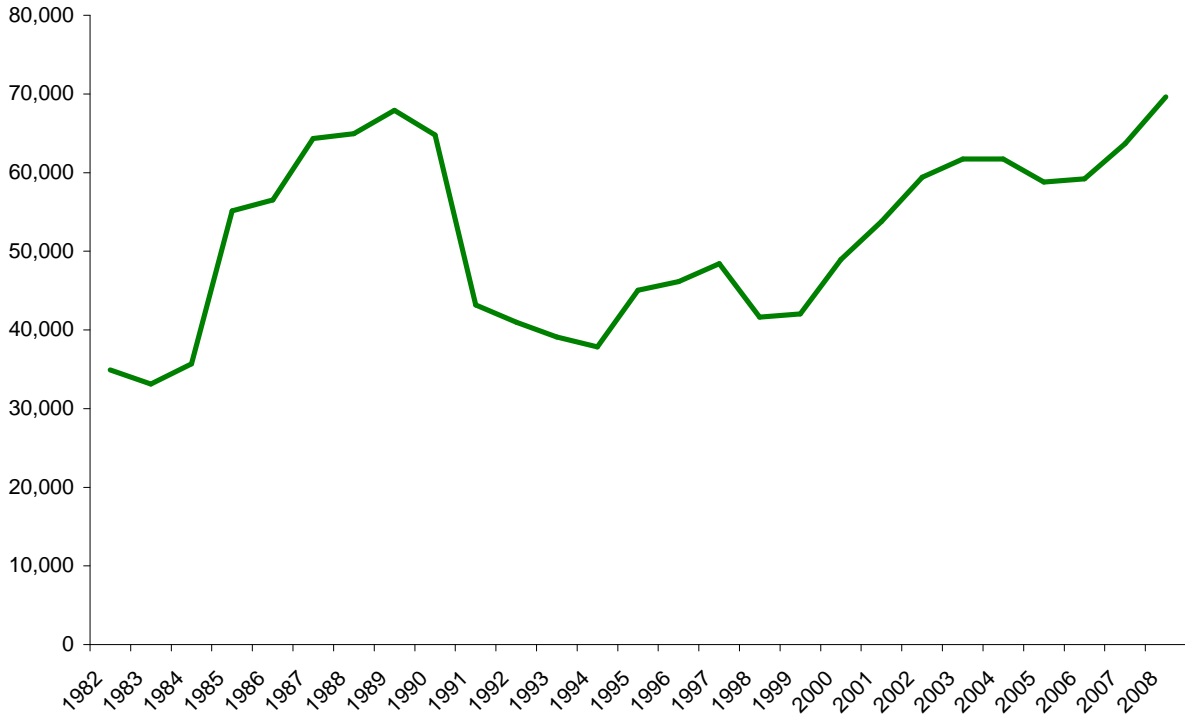
ALL VISITORS

<u>YEAR</u>	<u>TOTAL ARRIVALS</u>	<u>(000's)</u>		<u>% ROOM OCCUPANCY</u>	<u>(000's)</u>		<u>% SLEEPER OCCUPANCY</u>	<u>AVERAGE LENGTH OF STAY</u>
		<u>RNO</u>	<u>RNS</u>		<u>GNO</u>	<u>GNS</u>		
1982	34,896	n/a	n/a	n/a	529	223	42.2	6.4
1983	33,142	n/a	n/a	n/a	546	210	38.4	6.3
1984	35,690	n/a	n/a	n/a	546	226	41.3	6.3
1985	55,119	n/a	n/a	n/a	552	282	51.0	5.1
1986	56,525	n/a	n/a	n/a	519	266	51.3	4.6
1987	64,349	n/a	n/a	n/a	535	278	52.3	4.3
1988	64,942	n/a	n/a	61.3	551	286	52.0	4.4
1989	67,934	n/a	n/a	53.3	501	220	44.0	3.2
1990	64,793	n/a	n/a	51.3	481	197	40.8	3.0
1991	43,193	n/a	n/a	50.6	502	178	35.5	4.1
1992	40,986	237	98	41.2	497	157	31.6	3.8
1993	39,123	195	94	48.4	391	157	40.2	4.0
1994	37,851	199	89	44.5	401	149	37.2	3.9
1995	45,056	192	88	46.1	369	144	39.2	3.2
1996	46,142	191	83	43.3	372	141	37.8	3.1
1997	48,420	190	90	47.3	370	144	39.0	3.0
1998	41,616	173	93	53.6	335	145	43.1	3.5
1999	42,031	179	99	55.3	351	154	43.7	3.7
2000	48,949	179	105	58.9	368	164	44.6	3.4
2001	53,776	179	115	64.2	366	179	48.9	3.3
2002	59,417	183	118	64.4	367	182	49.7	3.1
2003	61,743	186	119	64.2	367	188	51.2	3.0
2004	61,710	186	126	68.2	366	202	55.1	3.3
2005	58,796	177	122	68.6	349	196	56.2	3.3
2006	59,194	200	119	59.2	406	192	47.3	3.2
2007	63,691	220	127	57.8	434	200	45.9	3.1
2008	69,630	219	133	60.6	425	207	48.7	3.0

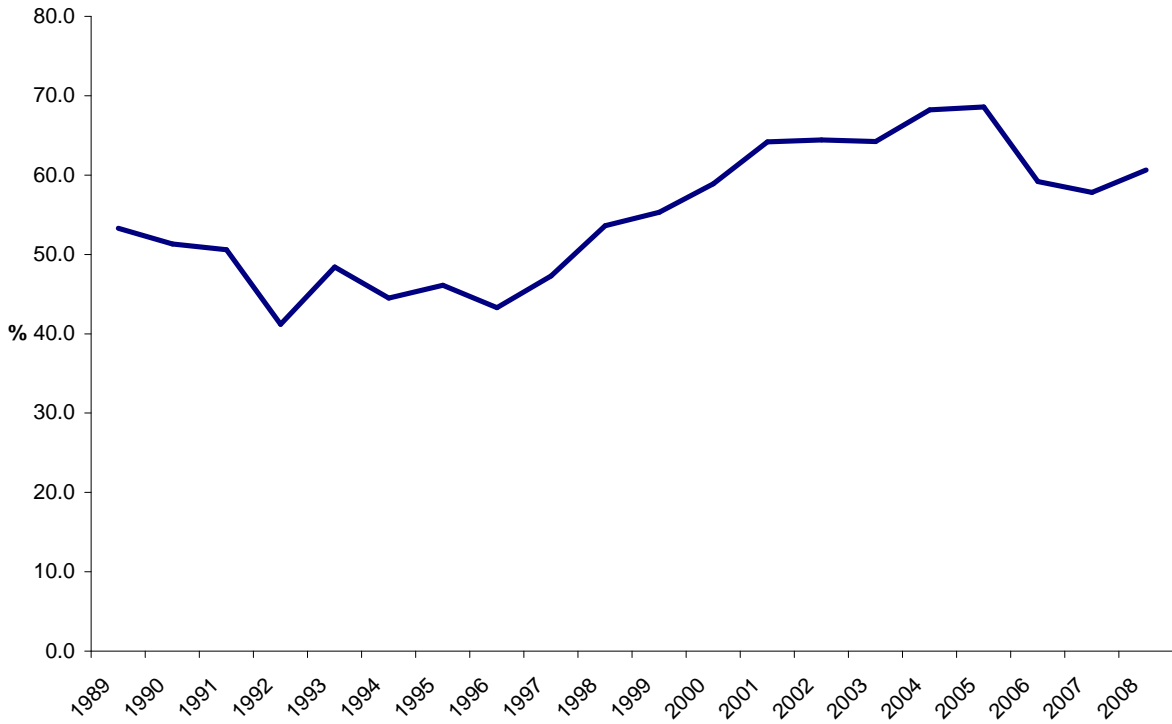
Notes:

1. RNO - Room Nights Offered.
2. RNS - Room Nights Sold.
3. GNO - Guest Nights Offered.
4. GNS - Guest Nights Sold.
5. With effect from January 1992, hotels were required under the legislation to submit returns which included the % room occupancy figures. For the period 1988 to 1991, these figures were provided voluntarily by the hotels.

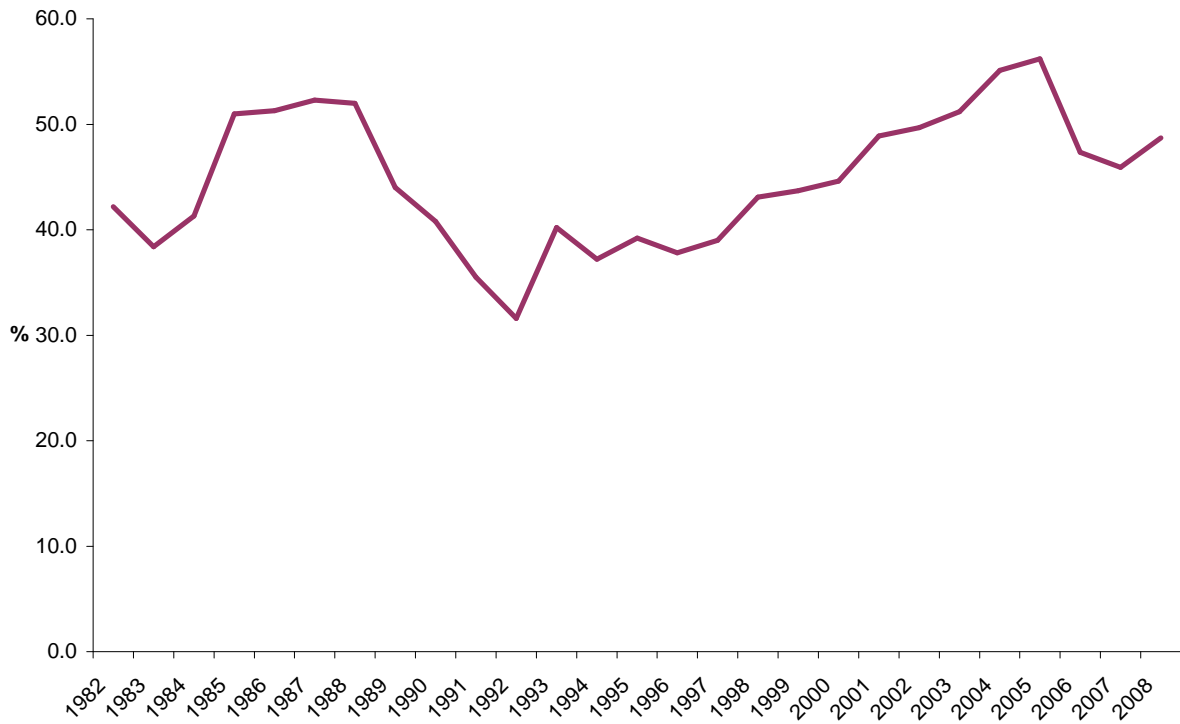
ALL ARRIVALS AT HOTELS, 1982 - 2008



% ROOM OCCUPANCY, ALL ARRIVALS, 1989 - 2008



% SLEEPER OCCUPANCY, ALL ARRIVALS, 1982 - 2008



AVERAGE LENGTH OF STAY, ALL ARRIVALS, 1982 - 2008

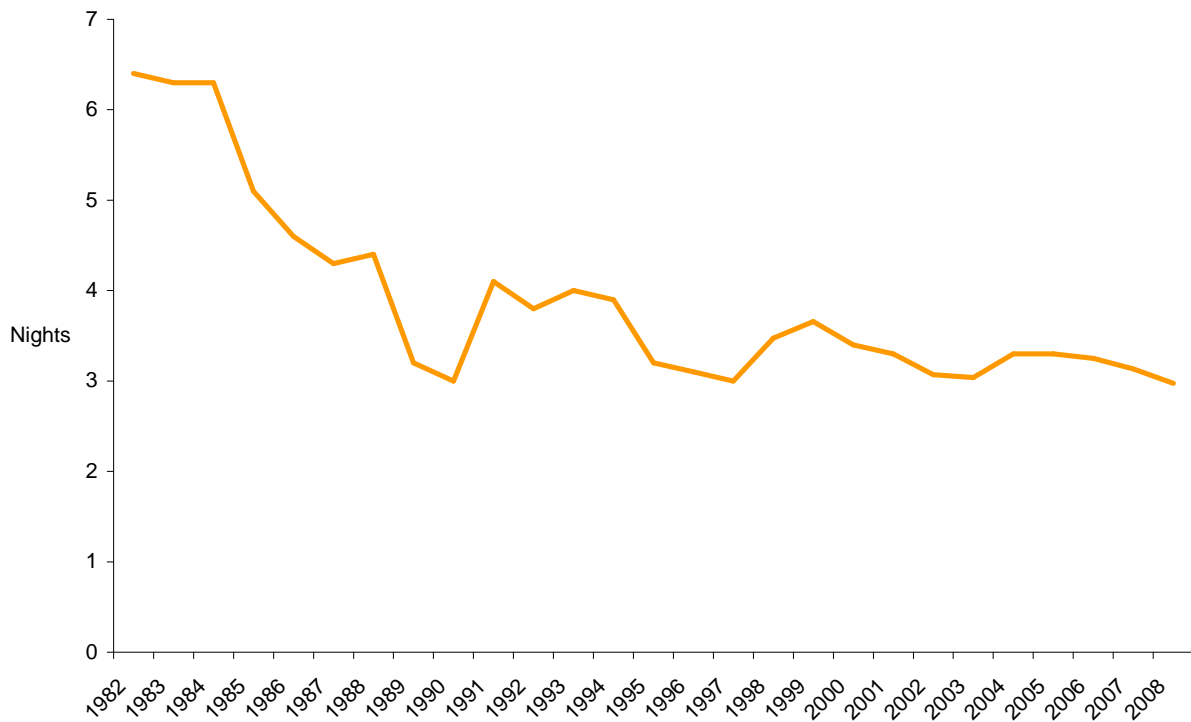


Table 2(a): Room Nights Sold and Offered, 2002 - 2006

ALL ARRIVALS

ROOM NIGHTS SOLD

(000's)

<u>MONTH</u>	<u>2002</u>	<u>2003</u>	<u>2004</u>	<u>2005</u>	<u>2006</u>
JANUARY	6.4	7.4	7.2	8.4	7.6
FEBRUARY	7.8	8.4	8.5	10.7	8.2
MARCH	9.5	10.5	11.3	9.9	11.0
APRIL	9.1	10.2	9.4	10.7	10.0
MAY	10.2	10.8	11.0	11.3	10.6
JUNE	10.6	11.7	11.6	10.7	11.3
JULY	11.2	10.4	11.6	10.1	10.9
AUGUST	10.6	10.0	11.9	10.3	9.7
SEPTEMBER	12.8	12.1	13.4	11.4	11.7
OCTOBER	11.5	11.2	11.7	12.1	11.4
NOVEMBER	10.2	9.7	10.6	9.0	8.9
DECEMBER	7.6	6.8	8.3	7.0	7.3
TOTAL	117.6	119.2	126.4	121.6	118.6

ROOM NIGHTS OFFERED

(000's)

<u>MONTH</u>	<u>2002</u>	<u>2003</u>	<u>2004</u>	<u>2005</u>	<u>2006</u>
JANUARY	15.2	15.8	14.7	15.6	16.9
FEBRUARY	13.8	14.2	14.6	13.5	15.4
MARCH	15.2	15.8	15.8	14.9	16.9
APRIL	14.8	15.3	15.3	14.6	16.5
MAY	15.1	15.8	15.8	15.3	16.9
JUNE	14.8	15.3	15.3	14.3	16.4
JULY	15.7	15.8	15.9	14.8	17.1
AUGUST	15.8	15.7	15.9	14.7	17.1
SEPTEMBER	15.3	15.2	15.3	14.2	16.6
OCTOBER	15.8	15.7	15.8	14.7	17.1
NOVEMBER	15.3	15.2	15.3	14.6	16.5
DECEMBER	15.8	15.7	15.8	16.1	17.0
TOTAL	182.5	185.5	185.5	177.2	200.4

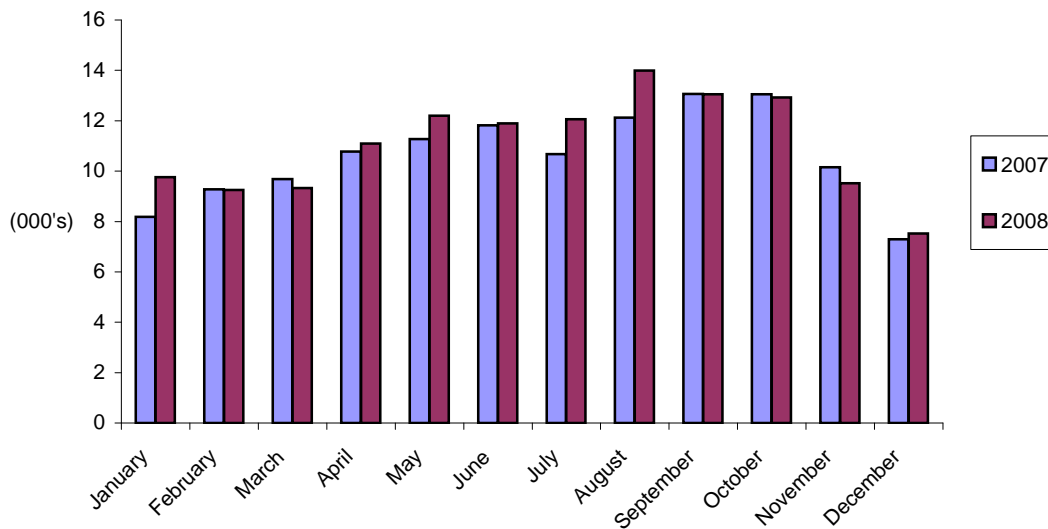
Note: Yearly totals have been rounded off and need not necessarily equal the sum of the rounded-off monthly figures.

Table 2(b): Room Nights Sold and Offered, 2007 - 2008

ALL ARRIVALS

<u>MONTH</u>	<u>ROOM NIGHTS SOLD</u>		<u>ROOM NIGHTS OFFERED</u>	
	<u>(000's)</u>		<u>(000's)</u>	
	<u>2007</u>	<u>2008</u>	<u>2007</u>	<u>2008</u>
JANUARY	8.2	9.8	18.9	18.7
FEBRUARY	9.3	9.3	17.1	17.5
MARCH	9.7	9.3	18.9	18.8
APRIL	10.8	11.1	18.1	18.1
MAY	11.3	12.2	18.5	18.7
JUNE	11.8	11.9	17.8	18.2
JULY	10.7	12.1	18.4	18.7
AUGUST	12.1	14.0	18.4	18.3
SEPTEMBER	13.1	13.1	18.2	17.8
OCTOBER	13.1	12.9	18.8	18.3
NOVEMBER	10.2	9.5	18.3	17.7
DECEMBER	7.3	7.5	18.8	17.9
TOTAL	127.4	132.6	220.2	218.7

ROOM NIGHTS SOLD, ALL ARRIVALS 2007 - 2008



Note: Yearly totals have been rounded off and need not necessarily equal the sum of the rounded-off monthly figures.

Table 2(c): Room Nights Sold and Offered, 2002 - 2006

TOURIST ARRIVALS

ROOM NIGHTS SOLD

(000's)

<u>MONTH</u>	<u>2002</u>	<u>2003</u>	<u>2004</u>	<u>2005</u>	<u>2006</u>
JANUARY	3.9	4.3	4.2	5.1	4.2
FEBRUARY	4.8	4.5	5.3	6.7	4.6
MARCH	6.6	6.5	6.9	6.3	6.1
APRIL	6.1	5.8	6.1	7.1	6.1
MAY	6.9	6.4	7.3	7.8	7.0
JUNE	6.0	7.0	7.0	7.8	7.9
JULY	7.4	6.4	7.4	6.3	6.7
AUGUST	7.1	6.7	7.7	6.8	6.9
SEPTEMBER	8.7	8.2	9.2	7.5	8.3
OCTOBER	7.1	7.4	8.0	8.1	8.4
NOVEMBER	5.6	6.1	6.8	5.3	6.1
DECEMBER	4.5	3.9	5.3	4.0	4.2
TOTAL	74.7	73.1	81.2	78.7	76.5

ROOM NIGHTS OFFERED

(000's)

<u>MONTH</u>	<u>2002</u>	<u>2003</u>	<u>2004</u>	<u>2005</u>	<u>2006</u>
JANUARY	15.2	15.8	14.7	15.6	16.9
FEBRUARY	13.8	14.2	14.6	13.5	15.4
MARCH	15.2	15.8	15.8	14.9	16.9
APRIL	14.8	15.3	15.3	14.6	16.5
MAY	15.1	15.8	15.8	15.3	16.9
JUNE	14.8	15.3	15.3	14.3	16.4
JULY	15.7	15.8	15.9	14.8	17.1
AUGUST	15.8	15.7	15.9	14.7	17.1
SEPTEMBER	15.3	15.2	15.3	14.2	16.6
OCTOBER	15.8	15.7	15.8	14.7	17.1
NOVEMBER	15.3	15.2	15.3	14.6	16.5
DECEMBER	15.8	15.7	15.8	16.1	17.0
TOTAL	182.5	185.5	185.5	177.2	200.4

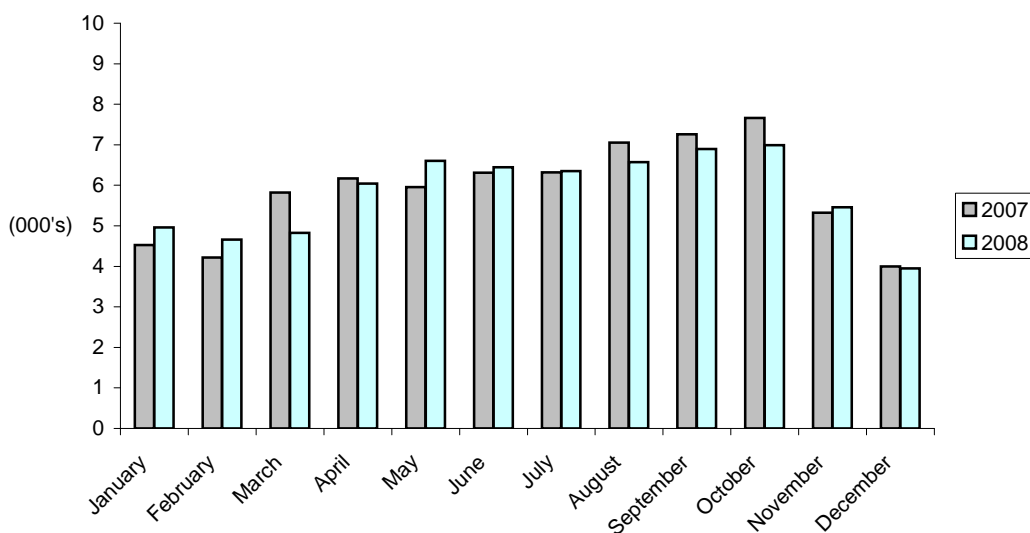
Note: Yearly totals have been rounded off and need not necessarily equal the sum of the rounded-off monthly figures.

Table 2(d): Room Nights Sold and Offered, 2007 - 2008

TOURIST ARRIVALS

<u>MONTH</u>	<u>ROOM NIGHTS SOLD</u>		<u>ROOM NIGHTS OFFERED</u>	
	<u>(000's)</u>		<u>(000's)</u>	
	<u>2007</u>	<u>2008</u>	<u>2007</u>	<u>2008</u>
JANUARY	4.5	5.0	18.9	18.7
FEBRUARY	4.2	4.7	17.1	17.5
MARCH	5.8	4.8	18.9	18.8
APRIL	6.2	6.0	18.1	18.1
MAY	6.0	6.6	18.5	18.7
JUNE	6.3	6.4	17.8	18.2
JULY	6.3	6.4	18.4	18.7
AUGUST	7.1	6.6	18.4	18.3
SEPTEMBER	7.3	6.9	18.2	17.8
OCTOBER	7.7	7.0	18.8	18.3
NOVEMBER	5.3	5.5	18.3	17.7
DECEMBER	4.0	3.9	18.8	17.9
TOTAL	70.6	69.8	220.2	218.7

ROOM NIGHTS SOLD, TOURIST ARRIVALS, 2007 - 2008



Note: Yearly totals have been rounded off and need not necessarily equal the sum of the rounded-off monthly figures.

Table 3(a): % Room Occupancy Rates, 1998 - 2002

ALL ARRIVALS

%

<u>MONTH</u>	<u>1998</u>	<u>1999</u>	<u>2000</u>	<u>2001</u>	<u>2002</u>
JANUARY	34.8	38.7	30.6	44.4	42.3
FEBRUARY	44.7	43.9	41.6	55.1	56.6
MARCH	48.3	58.4	51.7	67.3	62.4
APRIL	51.4	56.5	58.6	66.0	61.1
MAY	61.6	54.5	82.2	71.6	67.6
JUNE	58.9	59.7	72.2	75.3	72.0
JULY	55.7	54.6	63.6	67.0	71.4
AUGUST	65.1	65.4	61.9	66.0	67.0
SEPTEMBER	69.4	69.9	80.5	80.7	84.0
OCTOBER	59.3	64.9	64.8	73.3	72.9
NOVEMBER	55.1	62.0	52.9	58.8	66.9
DECEMBER	39.7	35.1	45.0	44.8	47.9
TOTAL	53.6	55.3	58.9	64.2	64.4

TOURIST ARRIVALS

%

<u>MONTH</u>	<u>1998</u>	<u>1999</u>	<u>2000</u>	<u>2001</u>	<u>2002</u>
JANUARY	23.1	21.9	19.6	26.1	25.4
FEBRUARY	29.4	26.9	24.8	33.7	35.1
MARCH	36.0	34.0	33.1	39.4	43.3
APRIL	33.5	32.9	38.3	35.8	41.2
MAY	40.4	34.4	50.9	42.6	45.5
JUNE	37.7	37.1	44.4	48.2	40.8
JULY	34.6	32.6	39.6	44.5	47.1
AUGUST	42.4	40.2	42.9	44.7	44.8
SEPTEMBER	47.0	43.9	54.2	55.2	56.8
OCTOBER	39.5	41.6	43.4	48.9	44.9
NOVEMBER	32.2	35.0	33.7	37.2	36.6
DECEMBER	23.1	22.4	26.8	27.3	28.8
TOTAL	34.9	33.6	37.7	40.3	40.9

Table 3(b): % Room Occupancy Rates, 2003 - 2008

ALL ARRIVALS

%

<u>MONTH</u>	<u>2003</u>	<u>2004</u>	<u>2005</u>	<u>2006</u>	<u>2007</u>	<u>2008</u>
JANUARY	46.7	48.9	54.3	45.1	43.3	52.3
FEBRUARY	58.7	58.6	79.2	53.0	54.4	52.9
MARCH	66.8	71.3	66.2	65.1	51.3	49.7
APRIL	66.4	61.3	73.2	60.3	59.4	61.2
MAY	68.4	69.8	73.6	62.6	61.0	65.1
JUNE	76.6	75.9	75.3	68.6	66.2	65.4
JULY	66.3	73.0	68.3	64.0	58.1	64.4
AUGUST	63.9	75.0	70.0	56.7	65.8	76.2
SEPTEMBER	79.1	87.4	80.0	70.8	71.9	73.5
OCTOBER	71.1	73.9	82.2	66.7	69.3	70.7
NOVEMBER	64.1	69.2	62.0	54.0	55.4	53.9
DECEMBER	43.1	52.2	43.7	42.9	38.8	41.9
TOTAL	64.2	68.2	68.6	59.2	57.8	60.6

% ROOM OCCUPANCY RATES, ALL ARRIVALS, 2007 - 2008

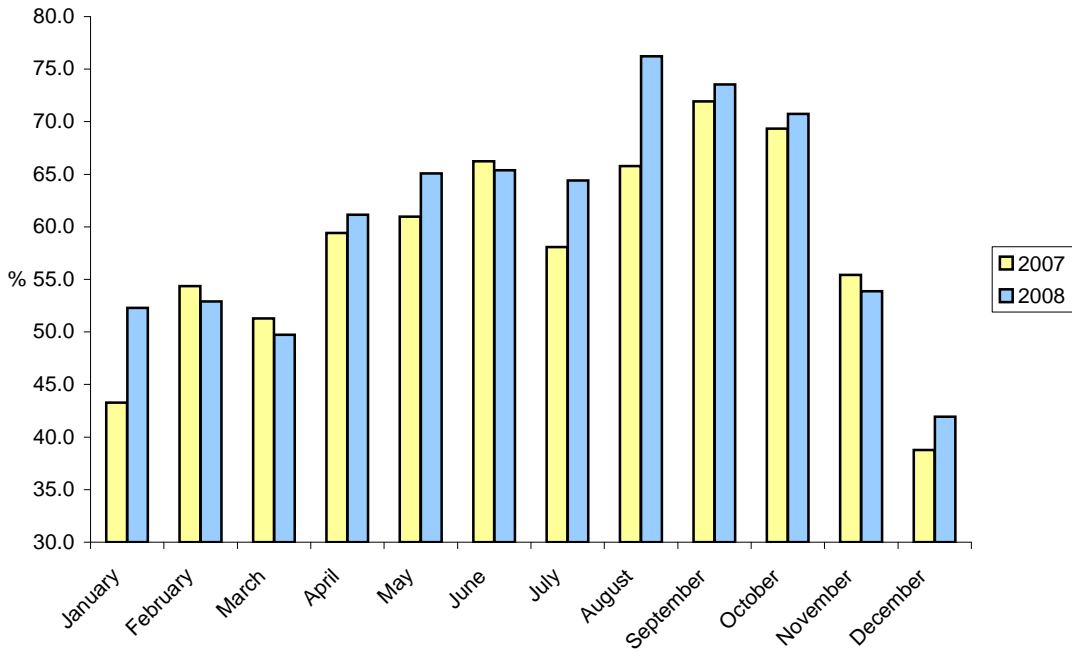


Table 3(c): % Room Occupancy Rates, 2003 - 2008

TOURIST ARRIVALS

%

<u>MONTH</u>	<u>2003</u>	<u>2004</u>	<u>2005</u>	<u>2006</u>	<u>2007</u>	<u>2008</u>
JANUARY	27.2	28.6	32.5	24.7	23.9	26.6
FEBRUARY	31.3	36.5	49.5	29.9	24.8	26.7
MARCH	40.9	43.8	42.2	35.8	30.8	25.7
APRIL	37.9	39.8	48.9	36.9	34.0	33.3
MAY	40.5	46.1	50.7	41.7	32.2	35.2
JUNE	45.5	45.5	54.6	47.8	35.4	35.4
JULY	40.9	46.9	42.5	39.4	34.4	33.9
AUGUST	42.5	48.8	46.1	40.5	38.3	35.8
SEPTEMBER	53.6	59.8	53.0	50.3	40.0	38.8
OCTOBER	47.1	50.6	55.0	48.8	40.7	38.3
NOVEMBER	40.3	44.2	36.5	36.8	29.1	30.9
DECEMBER	25.1	33.2	24.8	24.9	21.3	22.0
TOTAL	39.4	43.7	44.4	38.2	32.1	31.9

% ROOM OCCUPANCY RATES, TOURIST ARRIVALS, 2007 - 2008

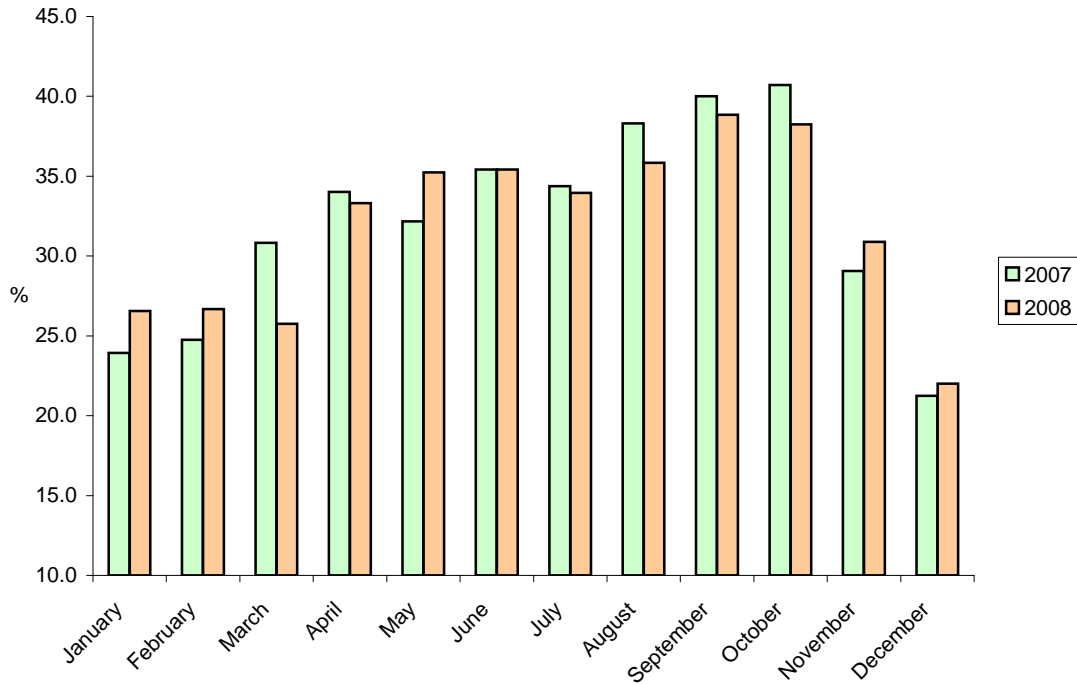


Table 4(a): Number of Arrivals by Month, 1982 - 1988

ALL ARRIVALS

(000's)

<u>MONTH</u>	<u>1982</u>	<u>1983</u>	<u>1984</u>	<u>1985</u>	<u>1986</u>	<u>1987</u>	<u>1988</u>
JANUARY	1.6	1.6	1.8	2.6	3.1	4.1	4.6
FEBRUARY	2.5	2.3	2.5	4.5	4.0	4.6	4.7
MARCH	3.7	2.6	2.6	4.9	4.6	6.3	6.3
APRIL	3.4	3.0	2.9	4.6	4.4	6.2	6.1
MAY	3.3	3.4	3.8	4.6	5.7	5.8	6.0
JUNE	3.2	2.7	2.8	4.6	5.1	5.1	5.8
JULY	2.9	3.1	3.3	5.2	4.5	4.4	5.4
AUGUST	3.4	3.2	3.4	5.4	5.2	5.1	5.3
SEPTEMBER	3.3	3.6	3.5	5.4	5.5	6.2	5.8
OCTOBER	3.1	3.0	4.0	5.1	5.0	5.3	4.9
NOVEMBER	2.3	2.5	3.0	4.6	4.9	6.0	5.8
DECEMBER	2.2	2.1	2.1	3.6	4.6	5.2	4.2
TOTAL	34.9	33.1	35.7	55.1	56.6	64.3	64.9

TOURIST ARRIVALS

(000's)

<u>MONTH</u>	<u>1982</u>	<u>1983</u>	<u>1984</u>	<u>1985</u>	<u>1986</u>	<u>1987</u>	<u>1988</u>
JANUARY	1.1	1.1	1.1	1.0	2.4	3.7	3.2
FEBRUARY	1.8	1.6	1.3	2.7	2.9	3.5	3.6
MARCH	2.4	1.8	1.7	3.6	3.8	5.0	4.7
APRIL	2.3	1.9	1.6	3.3	3.6	5.0	4.8
MAY	2.6	2.1	2.0	3.7	4.0	3.8	4.6
JUNE	2.3	2.0	2.1	3.5	3.9	3.5	4.0
JULY	2.3	2.0	2.1	3.8	3.4	3.6	3.6
AUGUST	2.2	2.1	2.3	4.3	4.0	4.1	3.6
SEPTEMBER	2.3	2.5	2.6	4.1	4.4	4.8	3.8
OCTOBER	2.0	1.9	2.7	3.5	4.2	4.8	3.6
NOVEMBER	1.7	1.6	2.0	3.5	4.3	4.8	3.6
DECEMBER	1.5	1.4	1.2	2.4	2.9	3.4	2.6
TOTAL	24.5	22.0	22.7	39.4	43.8	50.0	45.7

Note: Yearly totals have been rounded off and need not necessarily equal the sum of the rounded-off monthly figures.

Table 4(b): Number of Arrivals by Month, 1989 - 1995

ALL ARRIVALS

(000's)

<u>MONTH</u>	<u>1989</u>	<u>1990</u>	<u>1991</u>	<u>1992</u>	<u>1993</u>	<u>1994</u>	<u>1995</u>
JANUARY	3.4	3.4	3.4	2.3	1.9	2.5	2.0
FEBRUARY	4.3	4.1	3.4	3.0	2.4	2.4	2.8
MARCH	5.2	7.9	3.9	3.4	2.9	3.1	3.4
APRIL	5.3	8.4	3.6	3.6	3.0	3.1	4.0
MAY	4.6	6.0	4.2	4.0	3.8	3.9	3.8
JUNE	5.0	5.3	3.2	4.1	3.5	3.3	3.9
JULY	6.6	6.3	3.9	3.8	3.3	3.4	4.6
AUGUST	5.9	4.6	3.5	3.6	3.3	3.3	4.4
SEPTEMBER	7.4	5.8	4.3	4.1	4.4	4.3	5.7
OCTOBER	7.7	5.0	4.7	3.9	4.5	3.9	4.1
NOVEMBER	6.7	4.1	2.6	2.8	3.5	2.5	3.1
DECEMBER	5.8	3.9	2.5	2.4	2.5	2.2	3.2
TOTAL	67.9	64.8	43.2	41.0	39.1	37.9	45.1

TOURIST ARRIVALS

(000's)

<u>MONTH</u>	<u>1989</u>	<u>1990</u>	<u>1991</u>	<u>1992</u>	<u>1993</u>	<u>1994</u>	<u>1995</u>
JANUARY	2.4	2.0	1.9	1.6	1.5	1.7	1.6
FEBRUARY	3.5	2.4	1.9	2.2	1.5	1.7	2.2
MARCH	4.1	3.0	2.3	2.7	2.1	2.1	2.4
APRIL	4.1	3.4	2.1	2.8	2.1	2.1	2.8
MAY	3.6	2.8	2.4	2.9	2.6	2.4	2.6
JUNE	4.2	2.3	2.1	2.8	2.4	2.3	2.7
JULY	3.9	3.1	2.5	2.6	2.2	2.4	3.3
AUGUST	4.1	2.5	2.4	2.9	2.5	2.3	3.1
SEPTEMBER	4.4	3.1	2.4	2.6	2.9	2.9	4.1
OCTOBER	5.3	2.6	2.5	2.7	2.9	2.7	3.2
NOVEMBER	4.4	2.1	1.6	2.0	2.3	1.7	2.5
DECEMBER	3.5	2.0	1.7	1.9	1.9	1.6	2.5
TOTAL	47.5	31.3	26.0	29.9	27.0	25.9	33.1

Note: Yearly totals have been rounded off and need not necessarily equal the sum of the rounded-off monthly figures.

Table 4(c): Number of Arrivals by Month, 1996 - 2002

ALL ARRIVALS

(000's)

<u>MONTH</u>	<u>1996</u>	<u>1997</u>	<u>1998</u>	<u>1999</u>	<u>2000</u>	<u>2001</u>	<u>2002</u>
JANUARY	2.8	2.4	3.0	2.6	2.2	3.1	3.2
FEBRUARY	3.4	3.2	2.8	2.6	2.8	3.3	4.1
MARCH	4.0	3.3	3.1	3.6	3.9	4.5	4.6
APRIL	4.1	3.9	3.4	3.7	4.2	4.3	4.5
MAY	4.2	4.8	3.8	3.6	4.8	5.0	5.1
JUNE	4.1	4.7	3.5	3.8	4.8	5.0	4.3
JULY	3.8	4.3	3.4	3.4	4.0	5.0	5.8
AUGUST	3.9	5.5	4.2	4.3	4.6	5.3	5.8
SEPTEMBER	4.7	5.4	4.0	4.2	5.6	5.4	6.6
OCTOBER	4.3	3.9	4.2	4.3	4.8	5.1	6.2
NOVEMBER	3.3	3.8	3.6	3.7	3.9	4.3	5.1
DECEMBER	3.5	3.2	2.8	2.4	3.3	3.5	4.1
TOTAL	46.1	48.4	41.6	42.1	48.9	53.8	59.4

TOURIST ARRIVALS

(000's)

<u>MONTH</u>	<u>1996</u>	<u>1997</u>	<u>1998</u>	<u>1999</u>	<u>2000</u>	<u>2001</u>	<u>2002</u>
JANUARY	2.0	1.5	1.6	1.7	1.5	2.3	2.3
FEBRUARY	2.5	1.9	1.7	1.7	1.9	2.4	3.0
MARCH	2.7	1.9	2.1	2.3	2.8	3.2	3.5
APRIL	3.0	2.2	2.3	2.3	3.0	3.1	3.2
MAY	2.6	2.8	2.5	2.5	3.5	3.5	3.8
JUNE	2.6	2.7	2.4	2.5	3.6	3.4	3.0
JULY	2.7	2.8	2.3	2.2	2.9	3.7	4.0
AUGUST	3.0	3.3	3.0	2.8	3.5	4.1	4.1
SEPTEMBER	3.0	3.1	3.0	2.7	4.1	4.1	4.7
OCTOBER	3.1	2.8	2.9	3.0	3.6	3.8	4.0
NOVEMBER	2.2	2.0	2.4	2.3	2.9	3.4	3.3
DECEMBER	2.5	1.9	1.8	1.7	2.4	2.5	2.7
TOTAL	31.9	28.9	27.9	27.7	35.9	39.4	41.5

Note: Yearly totals have been rounded off and need not necessarily equal the sum of the rounded-off monthly figures.

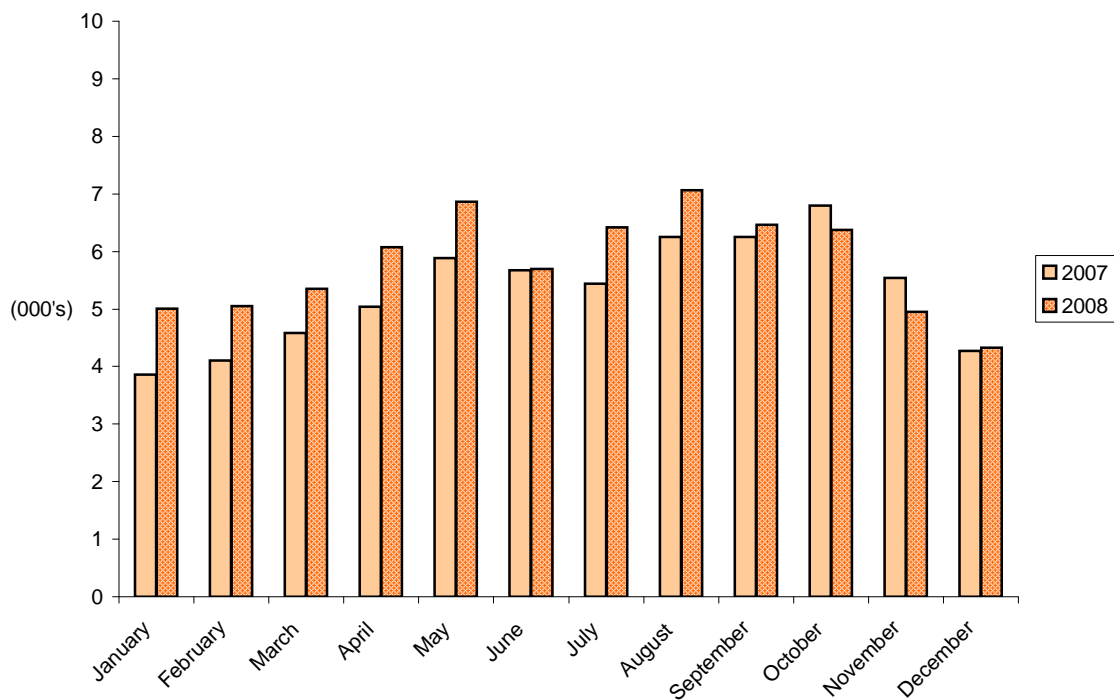
Table 4(d): Number of Arrivals by Month, 2003 - 2008

ALL ARRIVALS

(000's)

<u>MONTH</u>	<u>2003</u>	<u>2004</u>	<u>2005</u>	<u>2006</u>	<u>2007</u>	<u>2008</u>
JANUARY	3.7	3.8	4.0	4.3	3.9	5.0
FEBRUARY	4.4	4.4	4.6	4.5	4.1	5.1
MARCH	5.4	5.5	5.0	5.5	4.6	5.4
APRIL	5.0	4.7	5.1	5.3	5.0	6.1
MAY	5.6	5.7	5.7	5.7	5.9	6.9
JUNE	5.9	5.5	5.1	5.5	5.7	5.7
JULY	5.2	5.3	5.0	5.0	5.4	6.4
AUGUST	5.9	5.6	5.5	4.5	6.3	7.1
SEPTEMBER	5.8	6.2	5.7	5.4	6.3	6.5
OCTOBER	5.6	5.6	5.3	5.4	6.8	6.4
NOVEMBER	5.4	5.4	4.4	4.4	5.5	4.9
DECEMBER	3.9	3.9	3.7	3.8	4.3	4.3
TOTAL	61.7	61.7	58.8	59.2	63.7	69.6

ALL ARRIVALS AT HOTELS, 2007 - 2008



Note: Yearly totals have been rounded off and need not necessarily equal the sum of the rounded-off monthly figures.

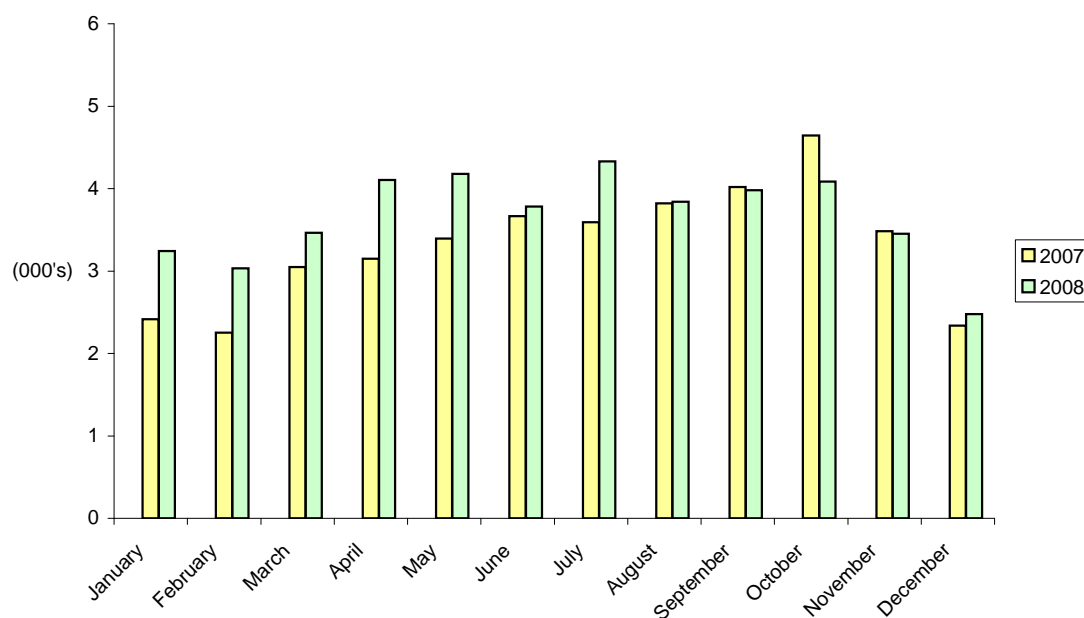
Table 4(e): Number of Arrivals by Month, 2003 - 2008

TOURIST ARRIVALS

(000's)

<u>MONTH</u>	<u>2003</u>	<u>2004</u>	<u>2005</u>	<u>2006</u>	<u>2007</u>	<u>2008</u>
JANUARY	2.3	2.7	2.8	2.5	2.4	3.2
FEBRUARY	2.9	3.0	3.3	2.6	2.3	3.0
MARCH	3.6	3.8	3.7	3.6	3.1	3.5
APRIL	3.2	3.4	3.6	3.6	3.1	4.1
MAY	3.5	4.4	4.3	4.2	3.4	4.2
JUNE	3.7	3.8	3.8	3.9	3.7	3.8
JULY	3.5	3.9	3.5	3.2	3.6	4.3
AUGUST	4.1	4.2	4.0	3.2	3.8	3.8
SEPTEMBER	4.0	4.6	4.1	3.8	4.0	4.0
OCTOBER	3.9	4.1	3.8	3.9	4.6	4.1
NOVEMBER	3.5	3.8	2.7	3.0	3.5	3.5
DECEMBER	2.6	2.8	2.2	2.2	2.3	2.5
TOTAL	40.9	44.5	41.9	39.8	39.8	44.0

TOURIST ARRIVALS AT HOTELS, 2007 - 2008



Note: Yearly totals have been rounded off and need not necessarily equal the sum of the rounded-off monthly figures.

Table 5(a): Guest Nights Sold/Offered, % Sleeper Occupancy, 1982 - 1985

<u>MONTH</u>	<u>ALL ARRIVALS</u>											
	<u>(000's)</u>				<u>(000's)</u>				<u>%</u>			
	<u>GUEST NIGHTS SOLD</u>				<u>GUEST NIGHTS OFFERED</u>				<u>SLEEPER OCCUPANCY</u>			
	<u>1982</u>	<u>1983</u>	<u>1984</u>	<u>1985</u>	<u>1982</u>	<u>1983</u>	<u>1984</u>	<u>1985</u>	<u>1982</u>	<u>1983</u>	<u>1984</u>	<u>1985</u>
JANUARY	9	9	9	11	43	45	46	45	20.2	19.0	20.7	24.3
FEBRUARY	14	11	13	18	40	41	43	41	35.2	27.7	30.0	42.7
MARCH	19	16	15	25	44	46	47	46	42.4	34.8	32.5	54.0
APRIL	22	16	18	25	44	45	45	45	50.5	35.9	39.9	56.8
MAY	23	20	23	23	45	46	46	47	50.0	43.2	50.5	50.3
JUNE	24	23	23	31	45	45	45	45	54.7	49.7	50.8	69.4
JULY	24	20	22	28	46	47	45	48	51.9	42.3	50.1	58.0
AUGUST	24	25	25	32	45	47	47	48	52.0	54.0	53.0	67.7
SEPTEMBER	22	25	27	32	43	46	44	46	51.7	54.6	61.0	68.2
OCTOBER	19	21	25	27	45	47	46	48	42.6	43.7	53.2	55.6
NOVEMBER	12	13	15	17	44	45	45	46	27.9	30.2	32.3	36.9
DECEMBER	11	11	11	13	45	46	47	47	25.6	24.4	22.9	27.3
TOTAL	223	210	226	282	529	546	546	552	42.2	38.4	41.3	51.0

Table 5(b): Guest Nights Sold/Offered, % Sleeper Occupancy, 1986 - 1989

<u>MONTH</u>	<u>ALL ARRIVALS</u>											
	<u>(000's)</u>				<u>(000's)</u>				<u>%</u>			
	<u>GUEST NIGHTS SOLD</u>				<u>GUEST NIGHTS OFFERED</u>				<u>SLEEPER OCCUPANCY</u>			
	<u>1986</u>	<u>1987</u>	<u>1988</u>	<u>1989</u>	<u>1986</u>	<u>1987</u>	<u>1988</u>	<u>1989</u>	<u>1986</u>	<u>1987</u>	<u>1988</u>	<u>1989</u>
JANUARY	13	19	16	15	43	46	46	42	30.1	42.1	35.8	35.2
FEBRUARY	15	18	19	18	38	42	44	40	39.0	43.9	42.6	46.0
MARCH	21	26	26	22	43	46	48	42	48.7	57.5	53.6	52.0
APRIL	18	24	26	23	42	43	45	42	42.0	55.6	57.1	54.8
MAY	25	25	26	19	45	45	47	44	57.2	55.7	55.1	41.9
JUNE	29	22	29	19	43	44	47	43	67.9	49.1	61.6	43.9
JULY	23	20	27	20	44	45	48	43	51.8	44.5	55.8	46.8
AUGUST	27	26	24	19	46	45	48	43	59.7	57.7	50.4	45.1
SEPTEMBER	29	29	26	19	44	45	44	42	64.8	65.6	60.4	46.0
OCTOBER	26	26	26	19	45	44	46	40	59.3	58.8	56.4	46.2
NOVEMBER	23	24	22	14	43	44	43	38	54.1	54.4	51.4	38.2
DECEMBER	17	20	19	13	44	46	45	42	38.5	42.5	42.6	31.2
TOTAL	266	279	286	220	520	535	551	501	51.3	52.3	52.0	44.0

Note: Yearly totals have been rounded off and need not necessarily equal the sum of the rounded-off monthly figures.

Table 5(c): Guest Nights Sold/Offered, % Sleeper Occupancy, 1990 - 1993**ALL ARRIVALS**

<u>MONTH</u>	<u>(000's)</u>				<u>(000's)</u>				<u>%</u>			
	<u>GUEST NIGHTS SOLD</u>				<u>GUEST NIGHTS OFFERED</u>				<u>SLEEPER OCCUPANCY</u>			
	<u>1990</u>	<u>1991</u>	<u>1992</u>	<u>1993</u>	<u>1990</u>	<u>1991</u>	<u>1992</u>	<u>1993</u>	<u>1990</u>	<u>1991</u>	<u>1992</u>	<u>1993</u>
JANUARY	11	12	9	7	37	40	42	33	31.2	29.4	20.6	21.5
FEBRUARY	14	13	9	9	37	37	41	30	37.3	34.5	22.8	30.1
MARCH	19	17	14	12	42	44	46	33	45.3	37.5	29.6	36.2
APRIL	23	14	14	12	41	41	42	32	55.4	34.0	32.6	38.3
MAY	21	17	15	16	42	41	43	34	50.4	40.2	35.6	45.6
JUNE	15	16	16	15	39	44	47	32	37.3	35.8	34.8	48.0
JULY	18	16	16	14	42	43	45	32	43.8	37.9	35.2	41.8
AUGUST	15	16	14	14	41	40	44	33	35.2	41.2	32.2	44.0
SEPTEMBER	18	17	16	18	41	44	41	32	44.4	39.2	39.7	56.2
OCTOBER	18	18	15	17	40	43	42	34	44.5	42.5	34.6	50.9
NOVEMBER	12	13	10	13	40	41	32	32	30.2	31.1	32.6	39.4
DECEMBER	13	10	9	10	39	45	33	33	32.4	22.4	27.0	29.6
TOTAL	197	178	157	157	481	502	497	391	40.8	35.5	31.6	40.2

Table 5(d): Guest Nights Sold/Offered, % Sleeper Occupancy, 1994 - 1997**ALL ARRIVALS**

<u>MONTH</u>	<u>(000's)</u>				<u>(000's)</u>				<u>%</u>			
	<u>GUEST NIGHTS SOLD</u>				<u>GUEST NIGHTS OFFERED</u>				<u>SLEEPER OCCUPANCY</u>			
	<u>1994</u>	<u>1995</u>	<u>1996</u>	<u>1997</u>	<u>1994</u>	<u>1995</u>	<u>1996</u>	<u>1997</u>	<u>1994</u>	<u>1995</u>	<u>1996</u>	<u>1997</u>
JANUARY	10	6	8	8	34	32	32	31	29.4	19.0	24.9	24.1
FEBRUARY	9	10	9	10	30	28	30	29	31.3	34.9	29.9	34.1
MARCH	12	10	12	10	33	31	32	31	37.2	33.4	36.3	33.0
APRIL	12	13	12	11	31	25	31	31	39.2	49.5	39.1	36.3
MAY	15	13	14	14	35	31	32	32	42.5	41.4	43.0	45.0
JUNE	14	14	13	13	33	30	30	30	40.6	46.3	37.2	44.4
JULY	15	15	12	14	35	32	31	31	42.4	48.2	39.0	44.1
AUGUST	13	15	13	16	35	32	31	31	37.0	46.2	42.3	51.3
SEPTEMBER	16	18	16	16	33	31	31	31	48.9	58.0	51.9	50.7
OCTOBER	15	13	13	14	35	32	31	31	43.9	41.1	42.8	44.1
NOVEMBER	9	9	10	10	33	31	30	31	27.8	28.1	31.3	31.7
DECEMBER	9	9	9	9	34	32	31	31	25.2	26.7	29.0	28.2
TOTAL	149	144	141	144	401	369	372	370	37.2	39.2	37.8	39.0

Note: Yearly totals have been rounded off and need not necessarily equal the sum of the rounded-off monthly figures.

Table 5(e): Guest Nights Sold/Offered, % Sleeper Occupancy, 1998 - 2001**ALL ARRIVALS**

<u>MONTH</u>	<u>(000's)</u>				<u>(000's)</u>				<u>%</u>			
	<u>GUEST NIGHTS SOLD</u>				<u>GUEST NIGHTS OFFERED</u>				<u>SLEEPER OCCUPANCY</u>			
	<u>1998</u>	<u>1999</u>	<u>2000</u>	<u>2001</u>	<u>1998</u>	<u>1999</u>	<u>2000</u>	<u>2001</u>	<u>1998</u>	<u>1999</u>	<u>2000</u>	<u>2001</u>
JANUARY	7	8	6	8	30	29	31	31	24.8	28.8	20.0	27.0
FEBRUARY	9	9	9	11	25	26	29	28	35.4	34.2	30.4	40.0
MARCH	11	13	12	15	28	29	31	31	38.8	45.5	37.5	47.9
APRIL	11	13	14	15	26	29	30	30	42.4	44.3	45.0	48.4
MAY	12	13	19	17	27	29	31	31	45.6	43.7	60.3	55.0
JUNE	13	14	17	18	28	29	30	30	45.9	49.1	56.6	58.3
JULY	13	13	16	17	29	29	31	31	43.9	44.5	50.2	53.5
AUGUST	16	16	16	18	29	29	31	31	54.4	56.3	51.8	57.4
SEPTEMBER	17	16	19	20	28	29	31	30	59.8	56.9	61.7	64.6
OCTOBER	15	15	15	18	29	31	31	31	50.2	50.0	48.7	57.3
NOVEMBER	12	14	12	13	28	30	30	30	43.8	46.0	38.9	43.5
DECEMBER	9	8	11	11	29	31	31	31	32.2	25.6	34.1	34.1
TOTAL	145	154	164	179	335	351	368	366	43.1	43.8	44.6	48.9

Table 5(f): Guest Nights Sold/Offered, % Sleeper Occupancy, 2002 - 2005**ALL ARRIVALS**

<u>MONTH</u>	<u>(000's)</u>				<u>(000's)</u>				<u>%</u>			
	<u>GUEST NIGHTS SOLD</u>				<u>GUEST NIGHTS OFFERED</u>				<u>SLEEPER OCCUPANCY</u>			
	<u>2002</u>	<u>2003</u>	<u>2004</u>	<u>2005</u>	<u>2002</u>	<u>2003</u>	<u>2004</u>	<u>2005</u>	<u>2002</u>	<u>2003</u>	<u>2004</u>	<u>2005</u>
JANUARY	9	10	11	12	31	31	29	31	30.5	33.1	36.7	38.7
FEBRUARY	12	13	13	15	28	28	29	27	42.9	45.5	45.2	58.0
MARCH	15	16	17	15	31	31	31	29	47.7	51.8	56.3	52.8
APRIL	14	15	15	17	30	30	30	28	46.3	51.1	50.0	59.3
MAY	16	17	18	18	31	31	31	30	51.3	54.4	57.8	60.4
JUNE	13	18	18	18	30	30	30	28	43.6	60.9	59.4	64.5
JULY	18	16	19	16	31	31	31	29	56.8	53.2	61.2	57.1
AUGUST	18	18	21	18	31	31	31	29	58.8	58.2	65.9	62.0
SEPTEMBER	21	20	22	20	30	30	31	28	69.3	64.8	71.7	70.1
OCTOBER	19	18	19	20	31	31	31	29	61.3	57.0	60.1	68.5
NOVEMBER	15	15	17	15	30	30	30	29	50.9	49.5	55.0	52.6
DECEMBER	11	11	13	11	31	31	31	32	36.4	34.6	40.1	33.7
TOTAL	182	188	202	196	367	367	366	349	49.7	51.2	55.1	56.2

Note: Yearly totals have been rounded off and need not necessarily equal the sum of the rounded-off monthly figures.

Table 5(g): Guest Nights Sold, 2006 - 2008

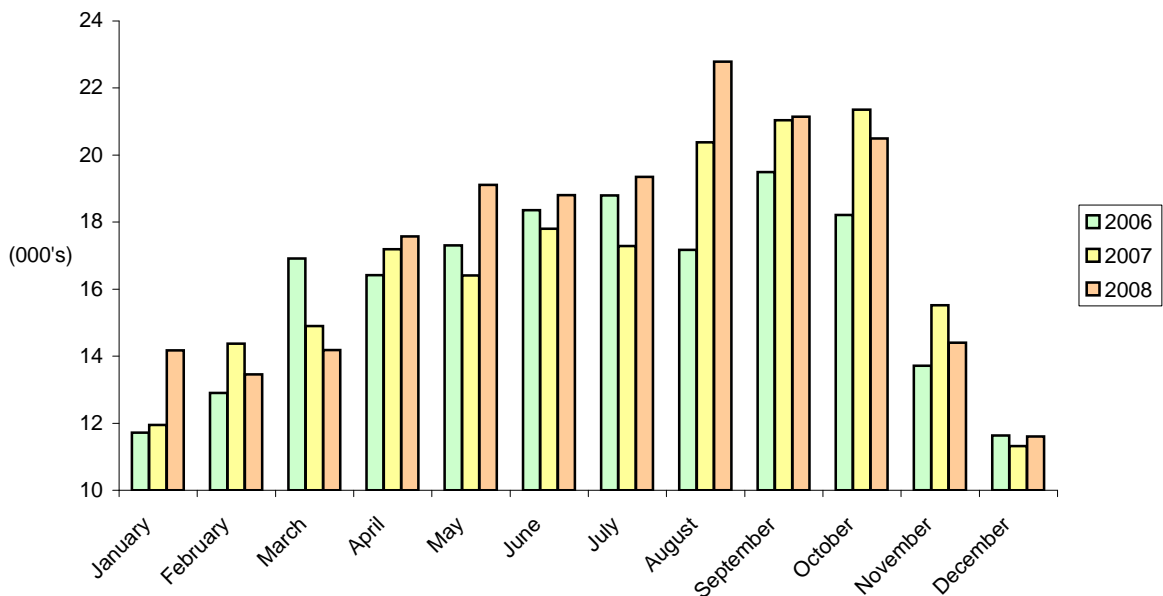
ALL ARRIVALS

GUEST NIGHTS SOLD

(000's)

<u>MONTH</u>	<u>2006</u>	<u>2007</u>	<u>2008</u>
JANUARY	11.7	11.9	14.2
FEBRUARY	12.9	14.4	13.5
MARCH	16.9	14.9	14.2
APRIL	16.4	17.2	17.6
MAY	17.3	16.4	19.1
JUNE	18.4	17.8	18.8
JULY	18.8	17.3	19.4
AUGUST	17.2	20.4	22.8
SEPTEMBER	19.5	21.0	21.1
OCTOBER	18.2	21.4	20.5
NOVEMBER	13.7	15.5	14.4
DECEMBER	11.6	11.3	11.6
TOTAL	192.3	199.5	207.1

GUEST NIGHTS SOLD, ALL ARRIVALS, 2006 - 2008



Note: Yearly totals have been rounded off and need not necessarily equal the sum of the rounded-off monthly figures.

Table 5(h): Guest Nights Offered, 2006 - 2008

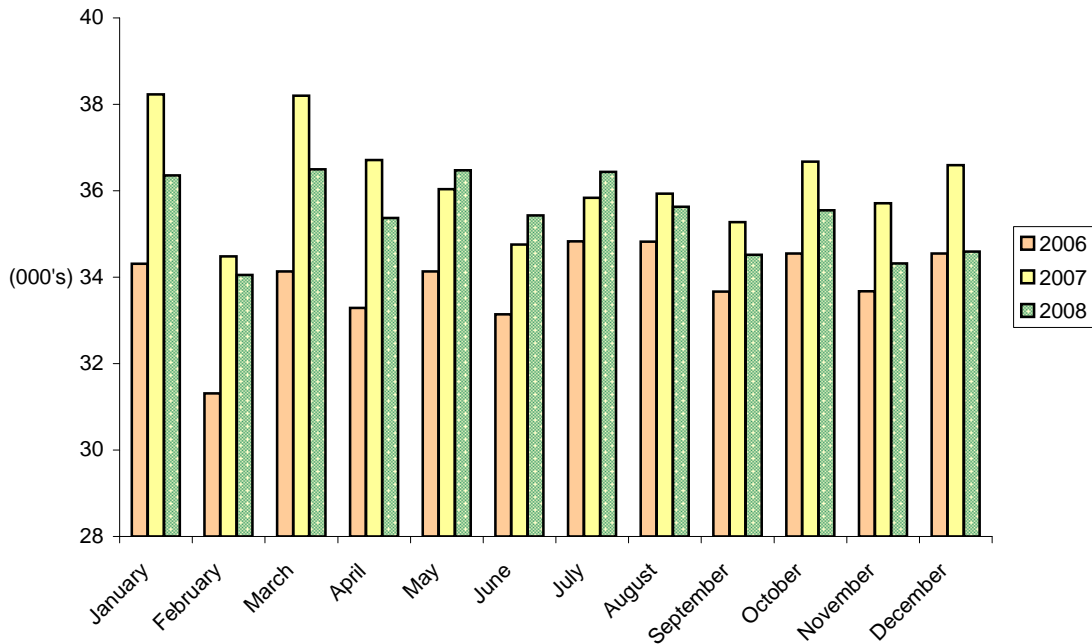
ALL ARRIVALS

GUEST NIGHTS OFFERED

(000's)

<u>MONTH</u>	<u>2006</u>	<u>2007</u>	<u>2008</u>
JANUARY	34.3	38.2	36.4
FEBRUARY	31.3	34.5	34.1
MARCH	34.1	38.2	36.5
APRIL	33.3	36.7	35.4
MAY	34.1	36.0	36.5
JUNE	33.1	34.8	35.4
JULY	34.8	35.8	36.4
AUGUST	34.8	35.9	35.6
SEPTEMBER	33.7	35.3	34.5
OCTOBER	34.5	36.7	35.5
NOVEMBER	33.7	35.7	34.3
DECEMBER	34.5	36.6	34.6
TOTAL	406.2	434.4	425.2

GUEST NIGHTS OFFERED, ALL ARRIVALS, 2006 - 2008



Note: Yearly totals have been rounded off and need not necessarily equal the sum of the rounded-off monthly figures.

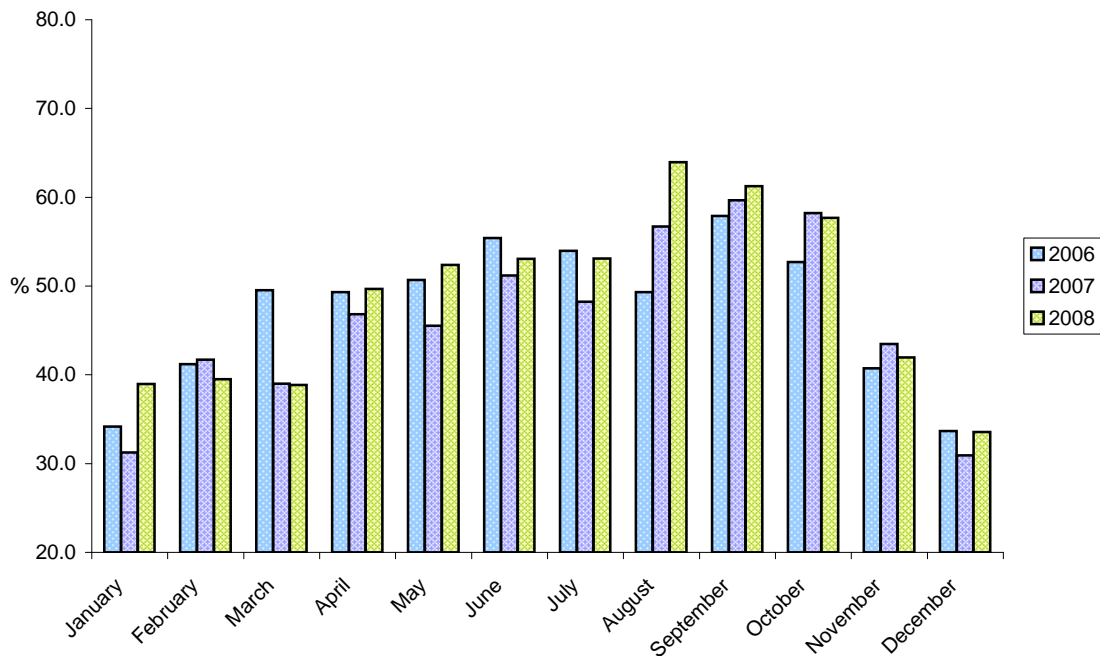
Table 5(i): % Sleeper Occupancy, 2006 - 2008

ALL ARRIVALS

%

<u>MONTH</u>	<u>2006</u>	<u>2007</u>	<u>2008</u>
JANUARY	34.2	31.3	39.0
FEBRUARY	41.2	41.7	39.5
MARCH	49.5	39.0	38.9
APRIL	49.3	46.8	49.7
MAY	50.7	45.5	52.4
JUNE	55.4	51.2	53.1
JULY	54.0	48.2	53.1
AUGUST	49.3	56.7	64.0
SEPTEMBER	57.9	59.7	61.3
OCTOBER	52.7	58.2	57.7
NOVEMBER	40.7	43.5	42.0
DECEMBER	33.7	30.9	33.6
TOTAL	47.3	45.9	48.7

% SLEEPER OCCUPANCY, ALL ARRIVALS, 2006 - 2008



Note: Yearly totals have been rounded off and need not necessarily equal the sum of the rounded-off monthly figures.

Table 6(a): Guest Nights Sold/Offered, % Sleeper Occupancy, 1982 - 1985

<u>TOURIST ARRIVALS</u>												
	<u>(000's)</u>				<u>(000's)</u>				<u>%</u>			
	<u>GUEST NIGHTS SOLD</u>				<u>GUEST NIGHTS OFFERED</u>				<u>SLEEPER OCCUPANCY</u>			
<u>MONTH</u>	<u>1982</u>	<u>1983</u>	<u>1984</u>	<u>1985</u>	<u>1982</u>	<u>1983</u>	<u>1984</u>	<u>1985</u>	<u>1982</u>	<u>1983</u>	<u>1984</u>	<u>1985</u>
JANUARY	7	7	7	8	43	45	46	45	15.3	15.5	15.0	16.5
FEBRUARY	10	8	8	14	40	41	43	41	24.8	20.7	19.4	33.8
MARCH	13	11	12	19	44	46	47	46	30.4	24.7	24.6	42.2
APRIL	16	10	13	18	44	45	45	45	36.1	23.4	28.4	40.2
MAY	16	14	15	18	45	46	46	47	35.2	29.4	33.2	39.4
JUNE	19	18	18	24	45	45	45	45	42.2	38.7	40.6	52.9
JULY	19	16	18	23	46	47	45	48	40.5	33.6	40.0	47.5
AUGUST	18	19	20	27	45	47	47	48	40.2	41.9	42.0	57.0
SEPTEMBER	16	19	22	26	43	46	44	46	43.4	41.7	50.2	56.7
OCTOBER	14	14	19	19	45	47	46	48	29.9	30.5	41.0	40.2
NOVEMBER	9	10	11	13	44	45	45	46	21.4	21.2	24.6	28.4
DECEMBER	8	9	8	9	45	46	47	47	18.3	18.4	17.4	18.8
TOTAL	165	155	171	218	529	546	546	552	31.1	28.4	31.3	39.6

Table 6(b): Guest Nights Sold/Offered, % Sleeper Occupancy, 1986 - 1989

<u>TOURIST ARRIVALS</u>												
	<u>(000's)</u>				<u>(000's)</u>				<u>%</u>			
	<u>GUEST NIGHTS SOLD</u>				<u>GUEST NIGHTS OFFERED</u>				<u>SLEEPER OCCUPANCY</u>			
<u>MONTH</u>	<u>1986</u>	<u>1987</u>	<u>1988</u>	<u>1989</u>	<u>1986</u>	<u>1987</u>	<u>1988</u>	<u>1989</u>	<u>1986</u>	<u>1987</u>	<u>1988</u>	<u>1989</u>
JANUARY	10	15	13	10	43	46	46	42	22.1	33.6	27.5	23.7
FEBRUARY	12	15	14	13	38	42	44	40	31.0	34.8	32.2	33.4
MARCH	16	21	19	15	43	46	48	42	38.1	46.3	39.8	36.2
APRIL	13	19	20	16	42	43	45	42	30.7	44.9	44.8	37.0
MAY	19	18	19	12	45	45	47	44	41.9	38.6	40.3	27.9
JUNE	23	16	20	14	43	44	47	43	52.8	36.9	43.5	32.7
JULY	18	15	19	13	44	45	48	43	41.0	34.3	39.2	30.6
AUGUST	21	19	17	13	46	45	48	43	46.3	42.5	34.5	30.6
SEPTEMBER	21	22	17	12	44	45	44	42	48.1	49.7	37.8	29.8
OCTOBER	20	21	17	14	45	44	46	40	45.3	46.4	37.9	34.0
NOVEMBER	18	18	14	11	43	44	43	38	41.7	41.8	32.5	27.6
DECEMBER	12	14	11	9	44	46	45	42	27.5	29.8	24.3	21.7
TOTAL	203	213	200	152	520	535	551	501	38.6	40.0	36.2	30.4

Note: Yearly totals have been rounded off and need not necessarily equal the sum of the rounded-off monthly figures.

Table 6(c): Guest Nights Sold/Offered, % Sleeper Occupancy, 1990 - 1993

<u>TOURIST ARRIVALS</u>												
	<u>(000's)</u>				<u>(000's)</u>				<u>%</u>			
	<u>GUEST NIGHTS SOLD</u>				<u>GUEST NIGHTS OFFERED</u>				<u>SLEEPER OCCUPANCY</u>			
<u>MONTH</u>	<u>1990</u>	<u>1991</u>	<u>1992</u>	<u>1993</u>	<u>1990</u>	<u>1991</u>	<u>1992</u>	<u>1993</u>	<u>1990</u>	<u>1991</u>	<u>1992</u>	<u>1993</u>
JANUARY	8	7	5	4	37	40	42	33	22.7	17.7	12.9	12.4
FEBRUARY	10	8	6	5	37	37	41	30	27.1	20.2	15.4	17.7
MARCH	13	8	9	8	42	44	46	33	31.0	19.1	19.3	23.0
APRIL	14	9	9	8	41	41	42	32	34.0	21.9	21.7	25.2
MAY	12	10	9	10	42	41	43	34	29.4	23.3	20.7	28.5
JUNE	10	8	10	10	39	44	47	32	24.3	19.4	22.0	32.7
JULY	12	10	10	8	42	43	45	32	27.4	23.2	21.3	26.2
AUGUST	10	8	10	10	41	40	44	33	23.1	21.3	22.0	30.5
SEPTEMBER	12	8	9	12	41	44	41	32	30.0	18.2	22.7	36.8
OCTOBER	11	10	9	11	40	43	42	34	27.8	23.3	20.8	33.2
NOVEMBER	8	7	6	9	40	41	32	32	19.5	16.4	20.1	27.8
DECEMBER	8	6	6	7	39	45	33	33	20.9	12.9	17.5	21.8
TOTAL	128	99	98	103	481	502	497	391	26.5	19.7	19.8	26.4

Table 6(d): Guest Nights Sold/Offered, % Sleeper Occupancy, 1994 - 1997

<u>TOURIST ARRIVALS</u>												
	<u>(000's)</u>				<u>(000's)</u>				<u>%</u>			
	<u>GUEST NIGHTS SOLD</u>				<u>GUEST NIGHTS OFFERED</u>				<u>SLEEPER OCCUPANCY</u>			
<u>MONTH</u>	<u>1994</u>	<u>1995</u>	<u>1996</u>	<u>1997</u>	<u>1994</u>	<u>1995</u>	<u>1996</u>	<u>1997</u>	<u>1994</u>	<u>1995</u>	<u>1996</u>	<u>1997</u>
JANUARY	7	5	5	5	34	32	32	31	19.5	15.1	16.4	15.2
FEBRUARY	6	7	7	6	30	28	30	29	21.1	25.8	22.8	22.3
MARCH	8	8	9	7	33	31	32	31	24.5	26.4	26.7	21.3
APRIL	9	10	10	7	31	25	31	31	27.1	38.1	30.9	23.9
MAY	10	9	10	10	35	31	32	32	28.5	30.8	30.9	29.9
JUNE	9	11	9	9	33	30	30	30	28.3	37.2	30.5	28.9
JULY	10	11	9	9	35	32	31	31	28.7	36.2	29.3	28.6
AUGUST	8	11	10	11	35	32	31	31	25.6	34.8	32.0	34.5
SEPTEMBER	12	14	10	11	33	31	31	31	35.2	45.6	34.3	34.8
OCTOBER	11	11	10	9	35	32	31	31	30.4	34.1	30.9	28.3
NOVEMBER	7	7	7	6	33	31	30	31	20.6	23.8	21.5	20.9
DECEMBER	6	7	6	6	34	32	31	31	18.9	21.8	20.7	18.9
TOTAL	103	113	101	95	401	369	372	370	25.8	30.7	27.2	25.6

Note: Yearly totals have been rounded off and need not necessarily equal the sum of the rounded-off monthly figures.

Table 6(e): Guest Nights Sold/Offered, % Sleeper Occupancy, 1998 - 2001

<u>TOURIST ARRIVALS</u>												
	<u>(000's)</u>				<u>(000's)</u>				<u>%</u>			
	<u>GUEST NIGHTS SOLD</u>				<u>GUEST NIGHTS OFFERED</u>				<u>SLEEPER OCCUPANCY</u>			
<u>MONTH</u>	<u>1998</u>	<u>1999</u>	<u>2000</u>	<u>2001</u>	<u>1998</u>	<u>1999</u>	<u>2000</u>	<u>2001</u>	<u>1998</u>	<u>1999</u>	<u>2000</u>	<u>2001</u>
JANUARY	4	5	4	6	30	29	31	31	14.4	17.2	13.0	19.3
FEBRUARY	5	6	6	8	25	26	29	28	21.4	21.8	20.0	26.9
MARCH	7	8	8	9	28	29	31	31	25.8	27.7	25.9	30.7
APRIL	7	8	9	9	26	29	30	30	28.8	27.3	30.8	29.1
MAY	8	9	12	11	27	29	31	31	30.6	30.0	39.1	34.9
JUNE	9	9	11	12	28	29	30	30	30.5	31.4	36.6	39.5
JULY	8	8	10	11	29	29	31	31	28.4	27.6	33.4	37.0
AUGUST	10	10	12	12	29	29	31	31	36.5	35.2	37.6	40.0
SEPTEMBER	12	10	14	14	28	29	31	30	41.5	36.2	44.3	46.3
OCTOBER	10	11	10	13	29	31	31	31	34.6	34.3	31.6	40.6
NOVEMBER	8	9	8	9	28	30	30	30	27.1	28.8	26.7	29.6
DECEMBER	6	5	7	7	29	31	31	31	19.5	17.3	21.6	22.1
TOTAL	95	98	111	121	335	351	368	366	28.2	27.9	30.1	33.0

Table 6(f): Guest Nights Sold/Offered, % Sleeper Occupancy, 2002 - 2005

<u>TOURIST ARRIVALS</u>												
	<u>(000's)</u>				<u>(000's)</u>				<u>%</u>			
	<u>GUEST NIGHTS SOLD</u>				<u>GUEST NIGHTS OFFERED</u>				<u>SLEEPER OCCUPANCY</u>			
<u>MONTH</u>	<u>2002</u>	<u>2003</u>	<u>2004</u>	<u>2005</u>	<u>2002</u>	<u>2003</u>	<u>2004</u>	<u>2005</u>	<u>2002</u>	<u>2003</u>	<u>2004</u>	<u>2005</u>
JANUARY	6	6	7	9	31	31	29	31	20.4	20.6	22.9	29.1
FEBRUARY	8	8	8	12	28	28	29	27	28.8	29.2	27.9	43.6
MARCH	11	11	11	12	31	31	31	29	34.5	34.0	37.0	42.6
APRIL	10	10	10	13	30	30	30	28	33.0	31.5	33.9	47.1
MAY	11	11	12	15	31	31	31	30	36.5	34.5	39.6	48.8
JUNE	10	12	11	15	30	30	30	28	33.0	38.5	37.4	52.2
JULY	12	11	15	13	31	31	31	29	38.7	34.8	47.4	43.7
AUGUST	13	13	16	13	31	31	31	29	40.7	40.4	50.7	46.1
SEPTEMBER	15	14	17	15	30	30	31	28	48.7	46.5	55.2	54.7
OCTOBER	13	12	15	16	31	31	31	29	40.9	40.0	48.2	53.4
NOVEMBER	9	10	13	10	30	30	30	29	29.8	33.2	41.5	36.0
DECEMBER	7	6	10	7	31	31	31	32	22.9	20.9	30.4	21.1
TOTAL	125	123	145	150	367	367	366	349	34.0	33.7	39.5	42.9

Note: Yearly totals have been rounded off and need not necessarily equal the sum of the rounded-off monthly figures.

Table 6(g): Guest Nights Sold, 2006 - 2008

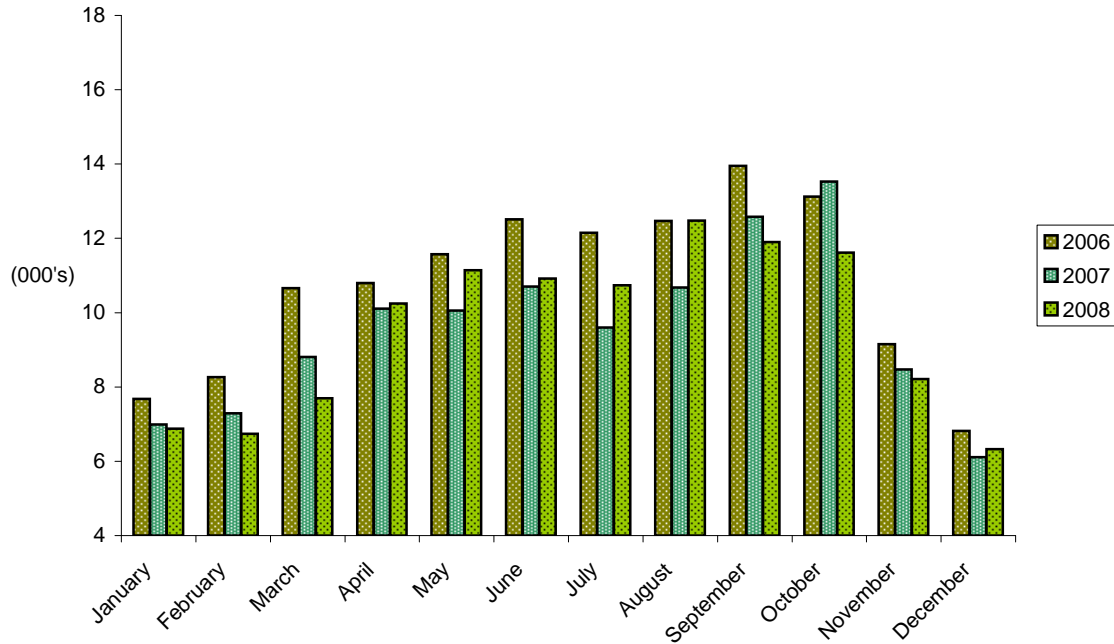
TOURIST ARRIVALS

GUEST NIGHTS SOLD

(000's)

<u>MONTH</u>	<u>2006</u>	<u>2007</u>	<u>2008</u>
JANUARY	7.7	7.0	6.9
FEBRUARY	8.3	7.3	6.7
MARCH	10.7	8.8	7.7
APRIL	10.8	10.1	10.2
MAY	11.6	10.1	11.1
JUNE	12.5	10.7	10.9
JULY	12.2	9.6	10.7
AUGUST	12.5	10.7	12.5
SEPTEMBER	14.0	12.6	11.9
OCTOBER	13.1	13.5	11.6
NOVEMBER	9.2	8.5	8.2
DECEMBER	6.8	6.1	6.3
TOTAL	128.8	114.9	114.9

GUEST NIGHTS SOLD, TOURIST ARRIVALS, 2006 - 2008



Note: Yearly totals have been rounded off and need not necessarily equal the sum of the rounded-off monthly figures.

Table 6(h): Guest Nights Offered, 2006 - 2008

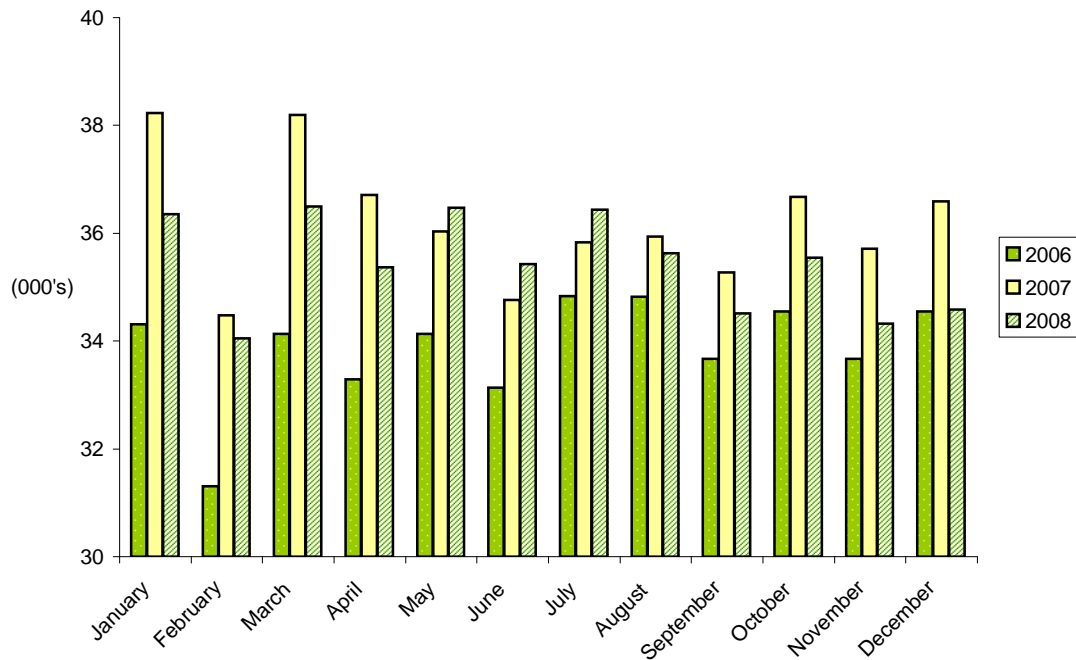
TOURIST ARRIVALS

GUEST NIGHTS OFFERED

(000's)

<u>MONTH</u>	<u>2006</u>	<u>2007</u>	<u>2008</u>
JANUARY	34.3	38.2	36.4
FEBRUARY	31.3	34.5	34.1
MARCH	34.1	38.2	36.5
APRIL	33.3	36.7	35.4
MAY	34.1	36.0	36.5
JUNE	33.1	34.8	35.4
JULY	34.8	35.8	36.4
AUGUST	34.8	35.9	35.6
SEPTEMBER	33.7	35.3	34.5
OCTOBER	34.5	36.7	35.5
NOVEMBER	33.7	35.7	34.3
DECEMBER	34.5	36.6	34.6
TOTAL	406.2	434.4	425.2

GUEST NIGHTS OFFERED, TOURIST ARRIVALS, 2006 - 2008



Note: Yearly totals have been rounded off and need not necessarily equal the sum of the rounded-off monthly figures.

Table 6(i): % Sleeper Occupancy, 2006 - 2008

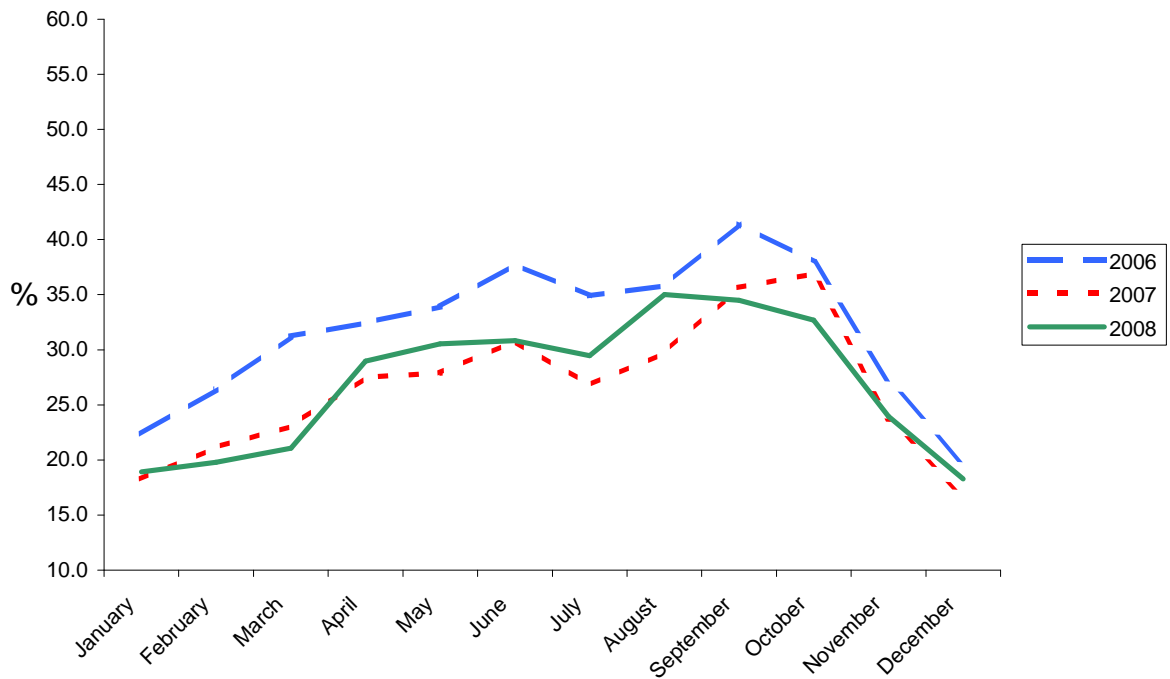
TOURIST ARRIVALS

SLEEPER OCCUPANCY

%

<u>MONTH</u>	<u>2006</u>	<u>2007</u>	<u>2008</u>
JANUARY	22.4	18.3	18.9
FEBRUARY	26.4	21.1	19.8
MARCH	31.2	23.1	21.1
APRIL	32.4	27.5	29.0
MAY	33.9	27.9	30.5
JUNE	37.8	30.8	30.8
JULY	34.9	26.8	29.5
AUGUST	35.8	29.7	35.0
SEPTEMBER	41.4	35.7	34.5
OCTOBER	38.0	36.9	32.7
NOVEMBER	27.2	23.7	23.9
DECEMBER	19.7	16.7	18.3
TOTAL	31.7	26.5	27.0

% SLEEPER OCCUPANCY, TOURIST ARRIVALS, 2006 - 2008



Note: Yearly totals have been rounded off and need not necessarily equal the sum of the rounded-off monthly figures.

Table 7(a): Average Length of Stay Per Person (Nights), 1997 - 2008

ALL ARRIVALS

<u>YEAR</u>	<u>JAN</u>	<u>FEB</u>	<u>MAR</u>	<u>APR</u>	<u>MAY</u>	<u>JUN</u>	<u>JUL</u>	<u>AUG</u>	<u>SEP</u>	<u>OCT</u>	<u>NOV</u>	<u>DEC</u>	<u>TOTAL</u>
1997	3.1	3.0	3.1	2.9	3.0	2.9	3.2	2.9	2.9	3.5	2.6	2.7	3.0
1998	2.5	3.2	3.5	3.2	3.3	3.7	3.7	3.7	4.2	3.5	3.5	3.3	3.5
1999	3.3	3.5	3.7	3.5	3.6	3.8	3.8	3.8	3.9	3.6	3.8	3.3	3.7
2000	2.9	3.2	3.0	3.2	3.9	3.5	3.9	3.5	3.4	3.1	3.0	3.2	3.4
2001	2.7	3.4	3.3	3.4	3.4	3.5	3.3	3.4	3.6	3.5	3.5	3.1	3.3
2002	3.0	2.9	3.2	3.1	3.1	3.0	3.1	3.1	3.2	3.1	3.0	2.8	3.1
2003	2.8	2.9	3.0	3.1	3.0	3.1	3.1	3.1	3.4	3.2	2.8	2.7	3.0
2004	2.9	2.9	3.2	3.2	3.1	3.2	3.6	3.7	3.5	3.4	3.1	3.2	3.3
2005	3.0	3.4	3.1	3.3	3.2	3.6	3.3	3.3	3.5	3.8	3.5	2.9	3.3
2006	2.8	2.9	3.1	3.1	3.0	3.4	3.8	3.8	3.6	3.4	3.1	3.0	3.2
2007	3.1	3.5	3.3	3.4	2.8	3.1	3.2	3.3	3.4	3.1	2.8	2.6	3.1
2008	2.8	2.7	2.6	2.9	2.8	3.3	3.0	3.2	3.3	3.2	2.9	2.7	3.0

AVERAGE LENGTH OF STAY, ALL ARRIVALS, 2006 - 2008

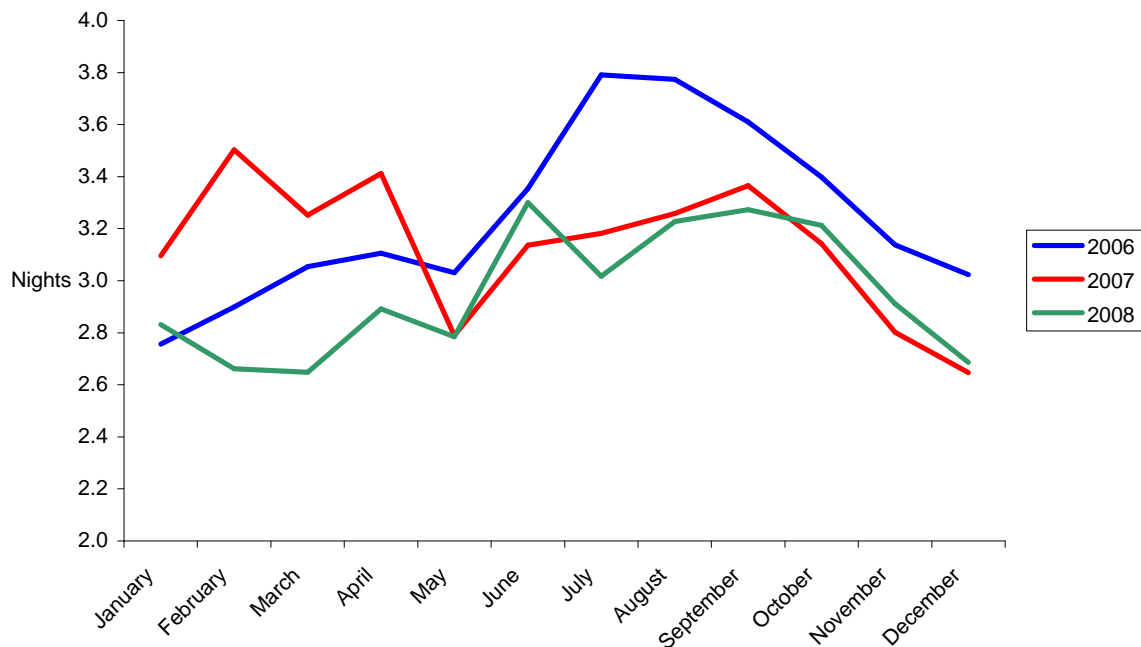


Table 7(b): Average Length of Stay Per Person (Nights), 1997 - 2008

TOURIST ARRIVALS

<u>YEAR</u>	<u>JAN</u>	<u>FEB</u>	<u>MAR</u>	<u>APR</u>	<u>MAY</u>	<u>JUN</u>	<u>JUL</u>	<u>AUG</u>	<u>SEP</u>	<u>OCT</u>	<u>NOV</u>	<u>DEC</u>	<u>TOTAL</u>
1997	3.2	3.3	3.5	3.4	3.4	3.3	3.2	3.2	3.5	3.1	3.2	3.0	3.3
1998	2.8	3.1	3.4	3.2	3.4	3.5	3.5	3.5	3.9	3.5	3.3	3.0	3.4
1999	3.0	3.4	3.5	3.4	3.5	3.6	3.6	3.6	3.9	3.6	3.8	3.2	3.5
2000	2.6	3.0	2.9	3.1	3.5	3.1	3.5	3.3	3.3	2.7	2.8	2.7	3.1
2001	2.6	3.2	3.0	2.9	3.1	3.5	3.1	3.0	3.4	3.3	2.6	2.6	3.1
2002	2.8	2.7	3.0	3.1	3.0	3.4	3.0	3.1	3.2	3.2	2.7	2.7	3.0
2003	2.8	2.9	3.0	2.9	3.0	3.2	3.1	3.1	3.5	3.2	2.8	2.4	3.0
2004	2.5	2.6	3.0	3.0	2.8	3.0	3.8	3.8	3.7	3.7	3.3	3.4	3.2
2005	3.2	3.6	3.4	3.7	3.4	3.8	3.6	3.3	3.8	4.0	3.8	3.0	3.6
2006	3.0	3.1	2.9	3.0	2.8	3.2	3.8	3.9	3.7	3.4	3.0	3.0	3.2
2007	2.9	3.2	2.9	3.2	3.0	2.9	2.7	2.8	3.1	2.9	2.4	2.6	2.9
2008	2.1	2.2	2.2	2.5	2.7	2.9	2.5	3.2	3.0	2.8	2.4	2.6	2.6

AVERAGE LENGTH OF STAY, TOURIST ARRIVALS, 2006 - 2008

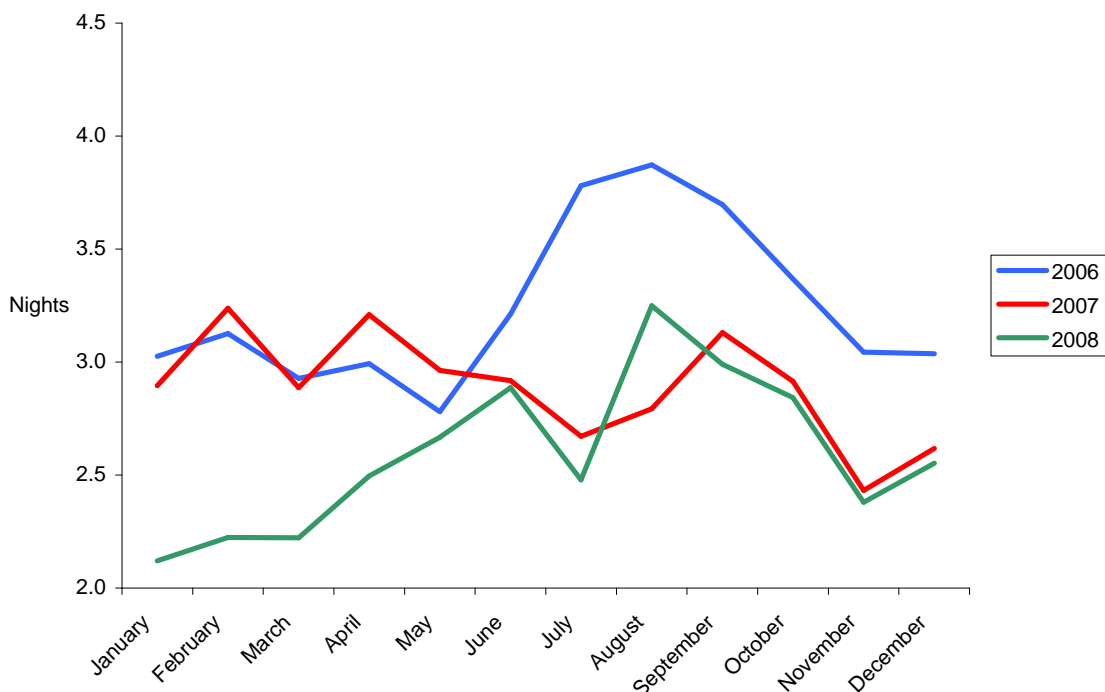


Table 8: Summary of Hotel Statistics, 1982- 2008

<u>YEAR</u>	<u>ARRIVALS AT HOTELS</u>	<u>GUEST NIGHTS SOLD</u>	<u>% SLEEPER OCCUPANCY</u>	<u>AV. LENGTH OF STAY (NIGHTS)</u>
1982	34,896	223,429	42.2	6.4
1983	33,142	209,930	38.4	6.3
1984	35,690	225,873	41.3	6.3
1985	55,119	281,525	51.0	5.1
1986	56,525	266,223	51.3	4.6
1987	64,349	279,377	52.3	4.3
1988	64,942	286,295	52.0	4.4
1989	67,934	220,083	44.0	3.2
1990	64,793	196,516	40.8	3.0
1991	43,193	178,053	35.5	4.1
1992	40,986	156,947	31.6	3.8
1993	39,123	157,215	40.2	4.0
1994	37,851	149,292	37.2	3.9
1995	45,056	144,453	39.2	3.2
1996	46,142	140,596	37.8	3.1
1997	48,420	143,972	39.0	3.0
1998	41,616	144,538	43.1	3.5
1999	42,031	153,583	43.7	3.7
2000	48,949	164,232	44.6	3.4
2001	53,776	178,951	48.9	3.3
2002	59,417	182,444	49.7	3.1
2003	61,743	187,631	51.2	3.0
2004	61,710	201,706	55.1	3.3
2005	58,796	195,827	56.2	3.3
2006	59,194	192,331	47.3	3.2
2007	63,691	199,529	45.9	3.1
2008	69,630	207,085	48.7	3.0

ALL ARRIVALS AT HOTELS, 1982 - 2008

