



GOVERNMENT OF GIBRALTAR

HOTEL OCCUPANCY

SURVEY

2007

STATISTICS OFFICE



GOVERNMENT OF GIBRALTAR

HOTEL OCCUPANCY SURVEY 2007

STATISTICS OFFICE

Government of Gibraltar
Statistics Office

Statistics Online

Copies of the Hotel Occupancy Survey can be obtained, free of charge from the Statistics Office and are also available electronically on the Gibraltar Government Website www.gibraltar.gov.gi.

Historic data can be downloaded from previous copies of the report available on-line.

Comments and requests for general information should be addressed to:

Statistics Office
99 New Harbours
The New Harbours
Gibraltar
Or
E-mail: statistics@gibraltar.gov.gi
Tel: +350 20075515/ +350 20075490
Fax: +350 20051160

PREFACE

The Statistics (Hotel Occupancy Survey) Order 1971 requires that the Government Statistician prepares a report and summary of the findings of the Hotel Occupancy Survey to be laid before the Gibraltar Parliament.

This is the thirty-second such report and it contains a summary of the statistics collected for the years 1981 – 2007.

I must express my thanks to the hotels for their continued co-operation in the conduct of this survey.

GOVERNMENT STATISTICIAN

FEBRUARY 2008

- C O N T E N T S -

A. Definitions and Notes

<u>TABLES</u>	<u>DESCRIPTION</u>	<u>PAGE</u>
1	General Analysis, All Hotels, 1981 - 2007	1
Chart	All Arrivals at Hotels, 1981 - 2007	2
Chart	% Room Occupancy, All Arrivals, 1988 - 2007	
Chart	Average Length of Stay, All Arrivals, 1981 - 2007	3
Chart	% Sleeper Occupancy, All Arrivals, 1981 - 2007	
2(a)	Room Nights Sold and Offered, All Hotels, 2001 - 2005 (All Arrivals)	4
2(b)	Room Nights Sold and Offered, All Hotels, 2006 - 2007 (All Arrivals)	5
Chart	Room Nights Sold, All Arrivals, 2005 - 2007	
2(c)	Room Nights Sold and Offered, All Hotels, 2001 - 2005 (Tourist Arrivals)	6
2(d)	Room Nights Sold and Offered, All Hotels, 2006 - 2007 (Tourist Arrivals)	7
Chart	Room Nights Sold, Tourist Arrivals, 2005 - 2007	
3(a)	% Room Occupancy Rates, 1997 - 2001	8
3(b)	% Room Occupancy Rates, All Arrivals, 2002 - 2007	9
Chart	% Room Occupancy Rates, All Arrivals, 2005 - 2007	
3(c)	% Room Occupancy Rates, Tourist Arrivals, 2002 - 2007	10
Chart	% Room Occupancy Rates, Tourist Arrivals, 2005 - 2007	
4(a)	Number of Arrivals by Month, All Hotels, 1981 - 1987	11
4(b)	Number of Arrivals by Month, All Hotels, 1988 - 1994	12
4(c)	Number of Arrivals by Month, All Hotels, 1995 - 2001	13
4(d)	Number of Arrivals by Month, All Hotels, 2002 - 2007 (All Arrivals)	14
Chart	All Arrivals at Hotels, 2005 - 2007	
4(e)	Number of Arrivals by Month, All Hotels, 2002 - 2007 (Tourist Arrivals)	15
Chart	Tourist Arrivals at Hotels, 2005 - 2007	
5(a)	Guest Nights Sold/Offered, % Sleeper Occupancy, All Hotels, 1981 - 1984 (All Arrivals)	16
5(b)	Guest Nights Sold/Offered, % Sleeper Occupancy, All Hotels, 1985 - 1988 (All Arrivals)	
5(c)	Guest Nights Sold/Offered, % Sleeper Occupancy, All Hotels, 1989 - 1992 (All Arrivals)	17
5(d)	Guest Nights Sold/Offered, % Sleeper Occupancy, All Hotels, 1993 - 1996 (All Arrivals)	
5(e)	Guest Nights Sold/Offered, % Sleeper Occupancy, All Hotels, 1997 - 2000 (All Arrivals)	18
5(f)	Guest Nights Sold/Offered, % Sleeper Occupancy, All Hotels, 2001 - 2004 (All Arrivals)	

- C O N T E N T S -

<u>TABLES</u>	<u>DESCRIPTION</u>	<u>PAGE</u>
5(g)	Guest Nights Sold, All Hotels, 2005 - 2007 (All Arrivals)	19
Chart 5(h)	Guest Nights Sold, All Arrivals, 2005 - 2007 Guest Nights Offered, All Hotels, 2005 - 2007 (All Arrivals)	20
Chart 5(i)	Guest Nights Offered, All Arrivals, 2005 - 2007 % Sleeper Occupancy, All Hotels, 2005 - 2007 (All Arrivals)	21
Chart 6(a)	% Sleeper Occupancy, All Arrivals, 2005 - 2007 Guest Nights Sold/Offered, % Sleeper Occupancy, All Hotels, 1981 - 1984 (Tourist Arrivals)	22
6(b)	Guest Nights Sold/Offered, % Sleeper Occupancy, All Hotels, 1985 - 1988 (Tourist Arrivals)	
6(c)	Guest Nights Sold/Offered, % Sleeper Occupancy, All Hotels, 1989 - 1992 (Tourist Arrivals)	23
6(d)	Guest Nights Sold/Offered, % Sleeper Occupancy, All Hotels, 1993 - 1996 (Tourist Arrivals)	
6(e)	Guest Nights Sold/Offered, % Sleeper Occupancy, All Hotels, 1997 - 2000 (Tourist Arrivals)	24
6(f)	Guest Nights Sold/Offered, % Sleeper Occupancy, All Hotels, 2001 - 2004 (Tourist Arrivals)	
6(g)	Guest Nights Sold, All Hotels, 2005 - 2007 (Tourist Arrivals)	25
Chart 6(h)	Guest Nights Sold, Tourist Arrivals, 2005 - 2007 Guest Nights Offered, All Hotels, 2005 - 2007 (Tourist Arrivals)	26
Chart 6(i)	Guest Nights Offered, Tourist Arrivals, 2005 - 2007 % Sleeper Occupancy, All Hotels, 2005 - 2007 (Tourist Arrivals)	27
Chart 7(a)	% Sleeper Occupancy, Tourist Arrivals, 2005 - 2007 Average Length of Stay Per Person (Nights), All Hotels, 1996 - 2007 (All Arrivals)	28
Chart 7(b)	Average Length of Stay, All Arrivals, 2005 - 2007 Average Length of Stay Per Person (Nights), All Hotels, 1996 - 2007 (Tourist Arrivals)	29
Chart Table 8	Average Length of Stay, Tourist Arrivals, 2005 - 2007 Summary of Hotel Statistics, 1981 - 2007	30

A. DEFINITIONS AND NOTES

- (a) Tourist: A tourist is a person who is primarily in Gibraltar for the purpose of a holiday. It is nevertheless up to the discretion of the individual hotels who to include under this category.
- (b) Guest Nights: Calculated on the basis of “one guest x one night”.
- (c) Room Nights: Calculated on the basis of “one room x one night”.
- (d) Sleeper Occupancy: Calculated as the percentage of guest nights sold over guest nights offered. It should be noted that this measure does not necessarily give an accurate indication of the ability of the hotel to accept more guests. e.g. one person staying in a room with two beds gives a 50% sleeper occupancy and a 100% room occupancy.
- (e) Room Occupancy: Calculated as the percentage of room nights sold over room nights offered.
- (f) Abbreviations:
 - GNS - Guest Nights Sold.
 - GNO - Guest Nights Offered.
 - RNS - Room Nights Sold.
 - RNO - Room Nights Offered.
- (g) In interpreting the figures it should be noted that:
 - (i) The Continental Hotel is included as from January 1986.
 - (ii) The Sunrise Motel is included for the period January 1992 to December 1994.
 - (iii) As from September 1992, the Montarik Hotel is not included.
 - (iv) As from November 1992, the Gibraltar Beach Hotel is not included.
 - (v) The Cannon Hotel is included with effect from July 1995.
 - (vi) The Emile Youth Hostel, Governor’s Inn Apartments and Herald Travel Apartments are included with effect from January 2006.
 - (vii) The Sunrise Motel is included with effect from January 2007.
- (h) The survey is based on the figures provided by the Caleta Hotel, O’Callaghan Elliott Hotel, Rock Hotel, Bristol Hotel, Queens Hotel, Cannon Hotel, Continental Hotel, The Emile Youth Hostel, Governor’s Inn Apartments, Herald Travel Apartments and the Sunrise Motel.

Table 1: General Analysis, All Hotels, 1981 - 2007

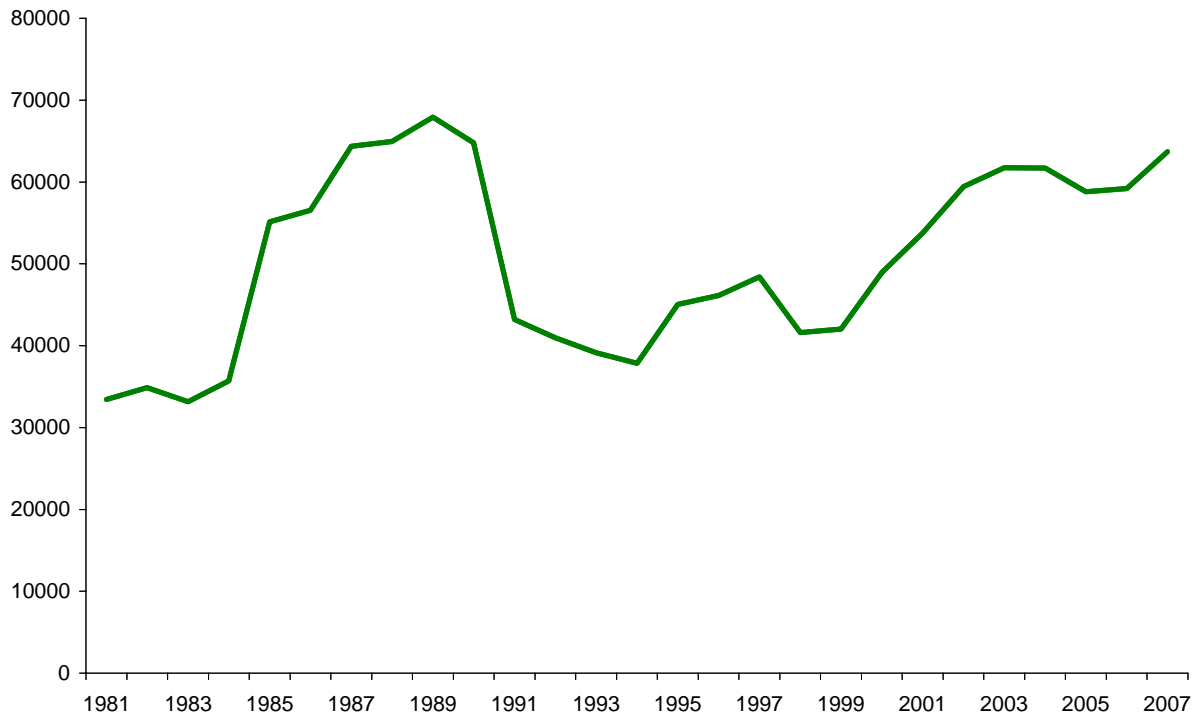
ALL VISITORS

<u>YEAR</u>	<u>TOTAL ARRIVALS</u>	(000's)		% <u>ROOM OCCUPANCY</u>	(000's)		% <u>SLEEPER OCCUPANCY</u>	<u>AVERAGE LENGTH OF STAY</u>
		<u>RNO</u>	<u>RNS</u>		<u>GNO</u>	<u>GNS</u>		
1981	33,417	n/a	n/a	n/a	519	188	36.2	5.6
1982	34,896	n/a	n/a	n/a	529	223	42.2	6.4
1983	33,142	n/a	n/a	n/a	546	210	38.4	6.3
1984	35,690	n/a	n/a	n/a	546	226	41.3	6.3
1985	55,119	n/a	n/a	n/a	552	282	51.0	5.1
1986	56,525	n/a	n/a	n/a	519	266	51.3	4.6
1987	64,349	n/a	n/a	n/a	535	278	52.3	4.3
1988	64,942	n/a	n/a	61.3	551	286	52.0	4.4
1989	67,934	n/a	n/a	53.3	501	220	44.0	3.2
1990	64,793	n/a	n/a	51.3	481	197	40.8	3.0
1991	43,193	n/a	n/a	50.6	502	178	35.5	4.1
1992	40,986	237	98	41.2	497	157	31.6	3.8
1993	39,123	195	94	48.4	391	157	40.2	4.0
1994	37,851	199	89	44.5	401	149	37.2	3.9
1995	45,056	192	88	46.1	369	144	39.2	3.2
1996	46,142	191	83	43.3	372	141	37.8	3.1
1997	48,420	190	90	47.3	370	144	39.0	3.0
1998	41,616	173	93	53.6	335	145	43.1	3.5
1999	42,031	179	99	55.3	351	154	43.7	3.7
2000	48,949	179	105	58.9	368	164	44.6	3.4
2001	53,776	179	115	64.2	366	179	48.9	3.3
2002	59,417	183	118	64.4	367	182	49.7	3.1
2003	61,743	186	119	64.2	367	188	51.2	3.0
2004	61,710	186	126	68.2	366	202	55.1	3.3
2005	58,796	177	122	68.6	349	196	56.2	3.3
2006	59,194	200	119	59.2	406	192	47.3	3.2
2007	63,691	220	127	57.8	434	200	45.9	3.1

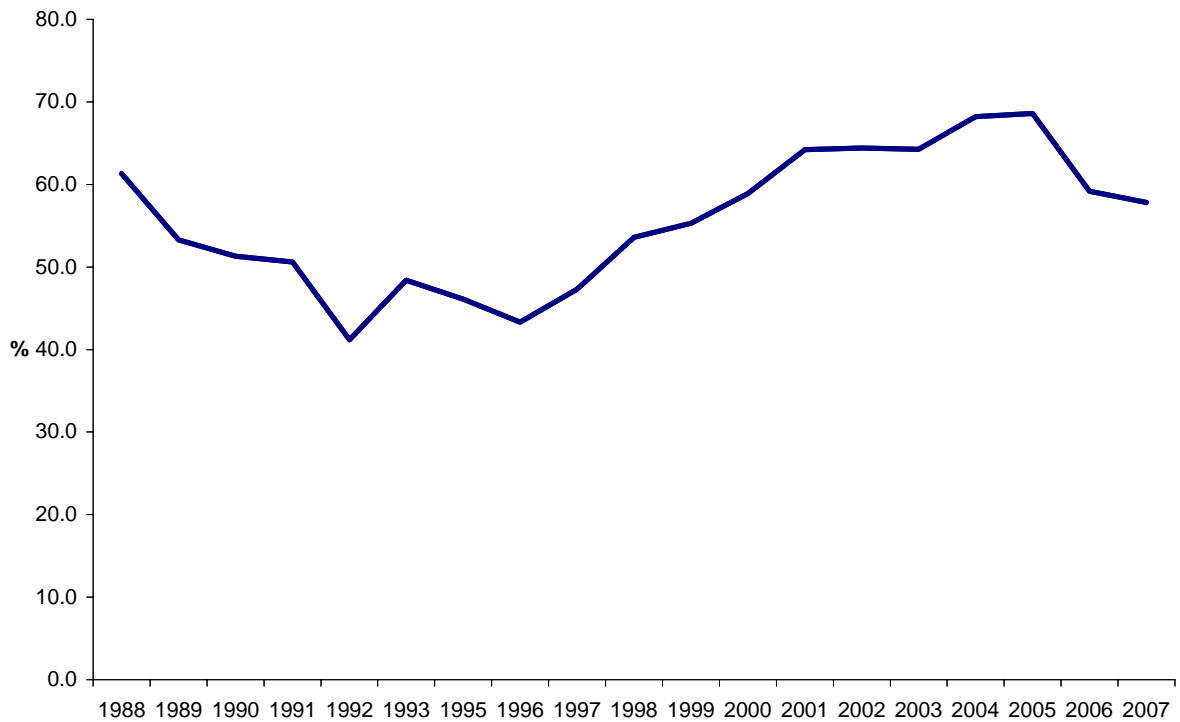
Notes:

1. RNO - Room Nights Offered.
2. RNS - Room Nights Sold.
3. GNO - Guest Nights Offered.
4. GNS - Guest Nights Sold.
5. With effect from January 1992, hotels were required under the legislation to submit returns which included the % room occupancy figures. For the period 1988 to 1991, these figures were provided voluntarily by the hotels.

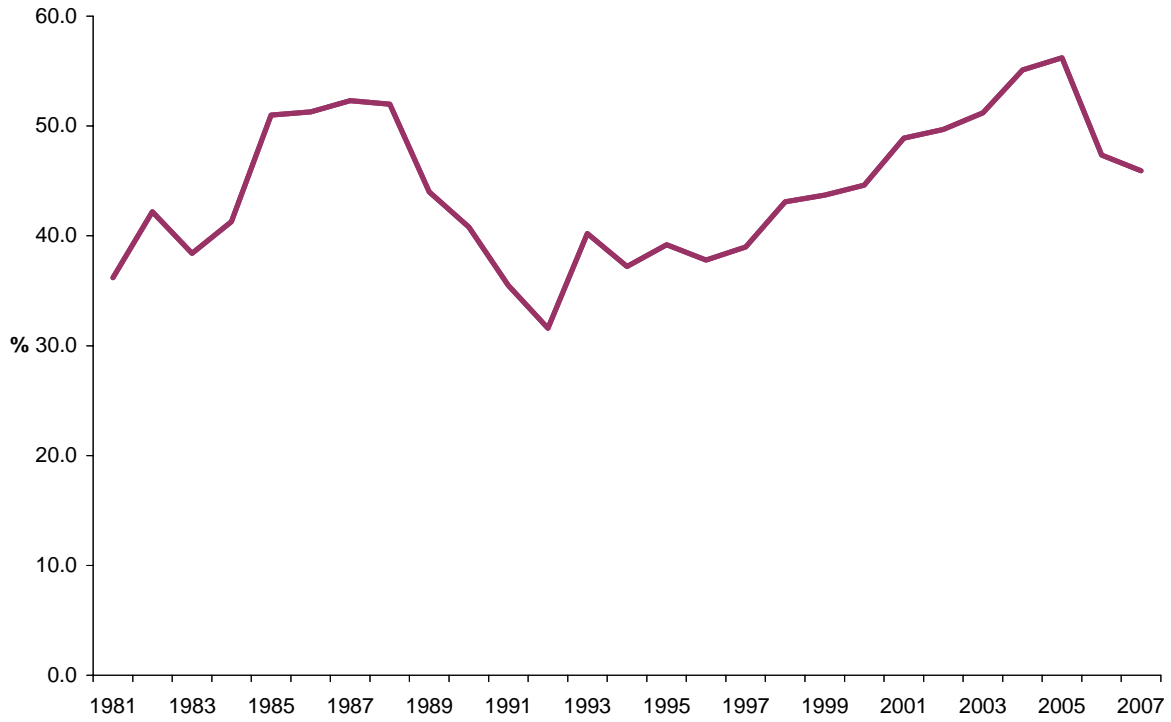
ALL ARRIVALS AT HOTELS, 1981 - 2007



% ROOM OCCUPANCY, ALL ARRIVALS, 1988 - 2007



% SLEEPER OCCUPANCY, ALL ARRIVALS, 1981 - 2007



AVERAGE LENGTH OF STAY, ALL ARRIVALS, 1981 - 2007

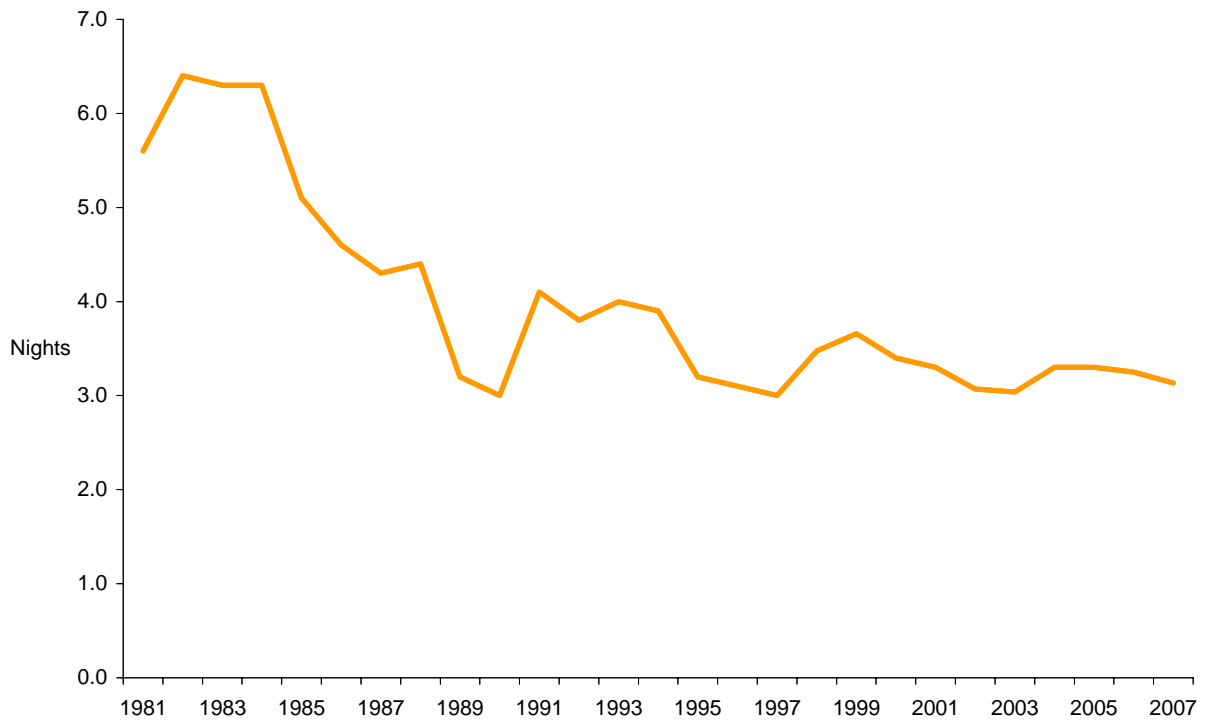


Table 2(a): Room Nights Sold and Offered, All Hotels, 2001 - 2005

ALL ARRIVALS

(00's)

ROOM NIGHTS SOLD

<u>MONTH</u>	<u>2001</u>	<u>2002</u>	<u>2003</u>	<u>2004</u>	<u>2005</u>
JANUARY	67	64	74	72	84
FEBRUARY	76	78	84	85	107
MARCH	102	95	105	113	99
APRIL	97	91	102	94	107
MAY	108	102	108	110	113
JUNE	111	106	117	116	107
JULY	101	112	104	116	101
AUGUST	100	106	100	119	103
SEPTEMBER	120	128	121	134	114
OCTOBER	112	115	112	117	121
NOVEMBER	87	102	97	106	90
DECEMBER	68	76	68	83	70
TOTAL	1,149	1,176	1,192	1,264	1,216

(00's)

ROOM NIGHTS OFFERED

<u>MONTH</u>	<u>2001</u>	<u>2002</u>	<u>2003</u>	<u>2004</u>	<u>2005</u>
JANUARY	151	152	158	147	156
FEBRUARY	137	138	142	146	135
MARCH	151	152	158	158	149
APRIL	147	148	153	153	146
MAY	151	151	158	158	153
JUNE	147	148	153	153	143
JULY	151	157	158	159	148
AUGUST	151	158	157	159	147
SEPTEMBER	148	153	152	153	142
OCTOBER	152	158	157	158	147
NOVEMBER	148	153	152	153	146
DECEMBER	152	158	157	158	161
TOTAL	1,789	1,825	1,855	1,855	1,772

Note: Yearly totals have been rounded off and need not necessarily equal the sum of the rounded-off monthly figures.

Table 2(b): Room Nights Sold and Offered, All Hotels, 2006 - 2007

<u>ALL ARRIVALS</u>				
<u>MONTH</u>	<u>(00's)</u>		<u>(00's)</u>	
	<u>ROOM NIGHTS SOLD</u>		<u>ROOM NIGHTS OFFERED</u>	
	<u>2006</u>	<u>2007</u>	<u>2006</u>	<u>2007</u>
JANUARY	76	82	169	189
FEBRUARY	82	93	154	171
MARCH	110	97	169	189
APRIL	100	108	165	181
MAY	106	113	169	185
JUNE	113	118	164	178
JULY	109	107	171	184
AUGUST	97	121	171	184
SEPTEMBER	117	131	166	182
OCTOBER	114	131	171	188
NOVEMBER	89	102	165	183
DECEMBER	73	7292	170	188
TOTAL	1,186	1,274	2,004	2,202

Note: Yearly totals have been rounded off and need not necessarily equal the sum of the rounded-off monthly figures.

ROOM NIGHTS SOLD, ALL ARRIVALS 2005 - 2007

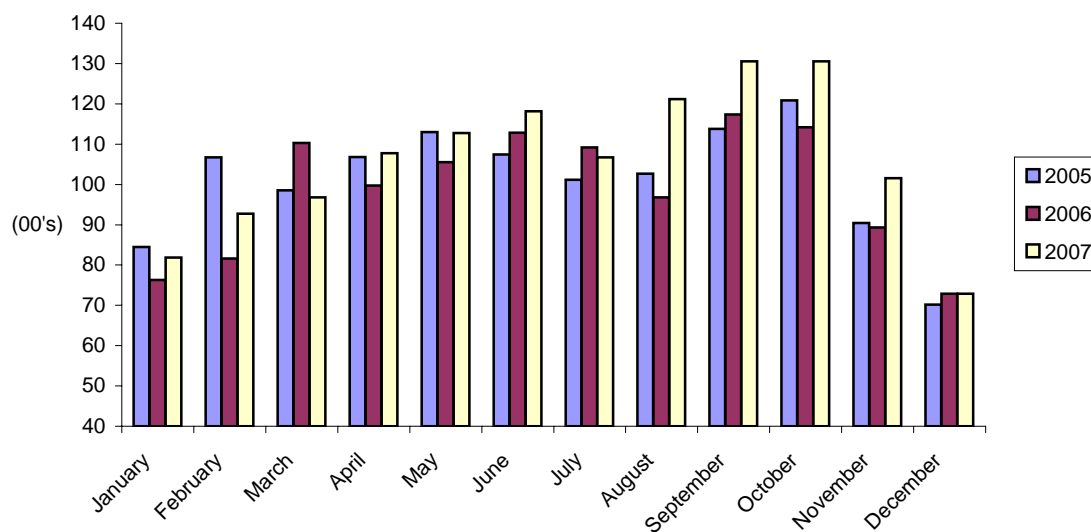


Table 2(c): Room Nights Sold and Offered, All Hotels, 2001 - 2005

TOURIST ARRIVALS

(00's)

ROOM NIGHTS SOLD

<u>MONTH</u>	<u>2001</u>	<u>2002</u>	<u>2003</u>	<u>2004</u>	<u>2005</u>
JANUARY	40	39	43	42	51
FEBRUARY	46	48	45	53	67
MARCH	60	66	65	69	63
APRIL	53	61	58	61	71
MAY	64	69	64	73	78
JUNE	71	60	70	70	78
JULY	67	74	64	74	63
AUGUST	68	71	67	77	68
SEPTEMBER	82	87	82	92	75
OCTOBER	74	71	74	80	81
NOVEMBER	55	56	61	68	53
DECEMBER	41	45	39	53	40
TOTAL	721	747	731	812	787

(00's)

ROOM NIGHTS OFFERED

<u>MONTH</u>	<u>2001</u>	<u>2002</u>	<u>2003</u>	<u>2004</u>	<u>2005</u>
JANUARY	151	152	158	147	156
FEBRUARY	137	138	142	146	135
MARCH	151	152	158	158	149
APRIL	147	148	153	153	146
MAY	151	151	158	158	153
JUNE	147	148	153	153	143
JULY	151	157	158	159	148
AUGUST	151	158	157	159	147
SEPTEMBER	148	153	152	153	142
OCTOBER	152	158	157	158	147
NOVEMBER	148	153	152	153	146
DECEMBER	152	158	157	158	161
TOTAL	1,789	1,825	1,855	1,855	1,772

Note: Yearly totals have been rounded off and need not necessarily equal the sum of the rounded-off monthly figures.

Table 2(d): Room Nights Sold and Offered, All Hotels, 2006 - 2007

TOURIST ARRIVALS

<u>MONTH</u>	<u>(00's)</u>		<u>(00's)</u>	
	<u>ROOM NIGHTS SOLD</u>		<u>ROOM NIGHTS OFFERED</u>	
	<u>2006</u>	<u>2007</u>	<u>2006</u>	<u>2007</u>
JANUARY	42	45	169	189
FEBRUARY	46	42	154	171
MARCH	61	58	169	189
APRIL	61	62	165	181
MAY	70	60	169	185
JUNE	79	63	164	178
JULY	67	63	171	184
AUGUST	69	71	171	184
SEPTEMBER	83	73	166	182
OCTOBER	84	77	171	188
NOVEMBER	61	53	165	183
DECEMBER	42	40	170	188
TOTAL	765	706	2,004	2,202

Note: Yearly totals have been rounded off and need not necessarily equal the sum of the rounded-off monthly figures.

ROOM NIGHTS SOLD, TOURIST ARRIVALS, 2005 - 2007

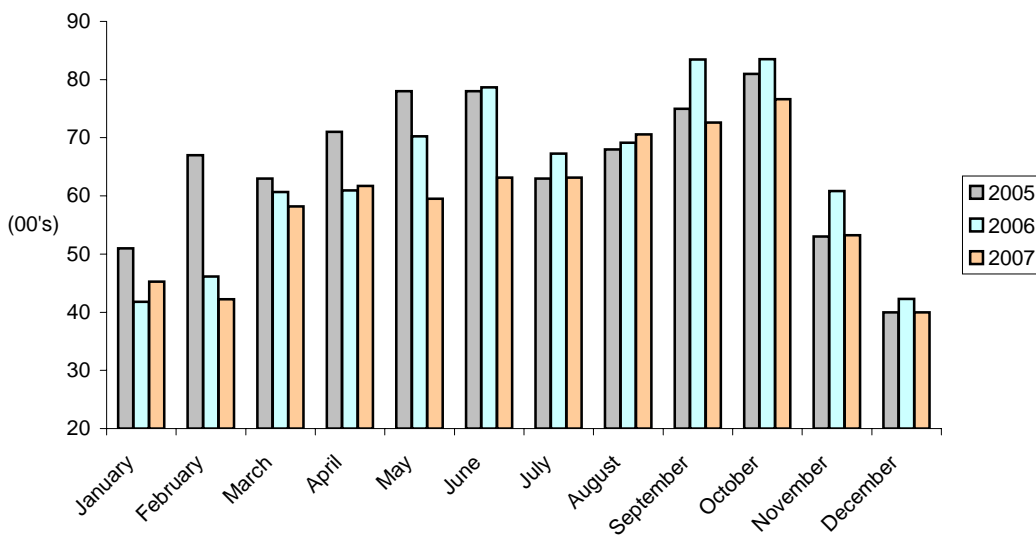


Table 3(a): % Room Occupancy Rates, 1997 - 2001

<u>MONTH</u>	<u>ALL ARRIVALS</u>				
	<u>%</u>				
	<u>1997</u>	<u>1998</u>	<u>1999</u>	<u>2000</u>	<u>2001</u>
JANUARY	28.6	34.8	38.7	30.6	44.4
FEBRUARY	39.9	44.7	43.9	41.6	55.1
MARCH	41.7	48.3	58.4	51.7	67.3
APRIL	43.3	51.4	56.5	58.6	66.0
MAY	51.5	61.6	54.5	82.2	71.6
JUNE	52.2	58.9	59.7	72.2	75.3
JULY	48.3	55.7	54.6	63.6	67.0
AUGUST	54.3	65.1	65.4	61.9	66.0
SEPTEMBER	62.5	69.4	69.9	80.5	80.7
OCTOBER	56.1	59.3	64.9	64.8	73.3
NOVEMBER	50.7	55.1	62.0	52.9	58.8
DECEMBER	38.9	39.7	35.1	45.0	44.8
TOTAL	47.3	53.6	55.3	58.9	64.2

<u>MONTH</u>	<u>TOURIST ARRIVALS</u>				
	<u>%</u>				
	<u>1997</u>	<u>1998</u>	<u>1999</u>	<u>2000</u>	<u>2001</u>
JANUARY	14.8	23.1	21.9	19.6	26.1
FEBRUARY	23.4	29.4	26.9	24.8	33.7
MARCH	26.3	36.0	34.0	33.1	39.4
APRIL	25.1	33.5	32.9	38.3	35.8
MAY	31.5	40.4	34.4	50.9	42.6
JUNE	30.0	37.7	37.1	44.4	48.2
JULY	27.0	34.6	32.6	39.6	44.5
AUGUST	30.2	42.4	40.2	42.9	44.7
SEPTEMBER	35.0	47.0	43.9	54.2	55.2
OCTOBER	28.2	39.5	41.6	43.4	48.9
NOVEMBER	25.4	32.2	35.0	33.7	37.2
DECEMBER	19.7	23.1	22.4	26.8	27.3
TOTAL	26.3	34.9	33.6	37.7	40.3

Table 3(b): % Room Occupancy Rates, 2002 - 2007

<u>ALL ARRIVALS</u>						
<u>%</u>						
<u>MONTH</u>	<u>2002</u>	<u>2003</u>	<u>2004</u>	<u>2005</u>	<u>2006</u>	<u>2007</u>
JANUARY	42.3	46.7	48.9	54.3	45.1	43.3
FEBRUARY	56.6	58.7	58.6	79.2	53.0	54.4
MARCH	62.4	66.8	71.3	66.2	65.1	51.3
APRIL	61.1	66.4	61.3	73.2	60.3	59.4
MAY	67.6	68.4	69.8	73.6	62.6	61.0
JUNE	72.0	76.6	75.9	75.3	68.6	66.2
JULY	71.4	66.3	73.0	68.3	64.0	58.1
AUGUST	67.0	63.9	75.0	70.0	56.7	65.8
SEPTEMBER	84.0	79.1	87.4	80.0	70.8	71.9
OCTOBER	72.9	71.1	73.9	82.2	66.7	69.3
NOVEMBER	66.9	64.1	69.2	62.0	54.0	55.4
DECEMBER	47.9	43.1	52.2	43.7	42.9	38.8
TOTAL	64.4	64.2	68.2	68.6	59.2	57.8

% ROOM OCCUPANCY RATES, ALL ARRIVALS, 2005 - 2007

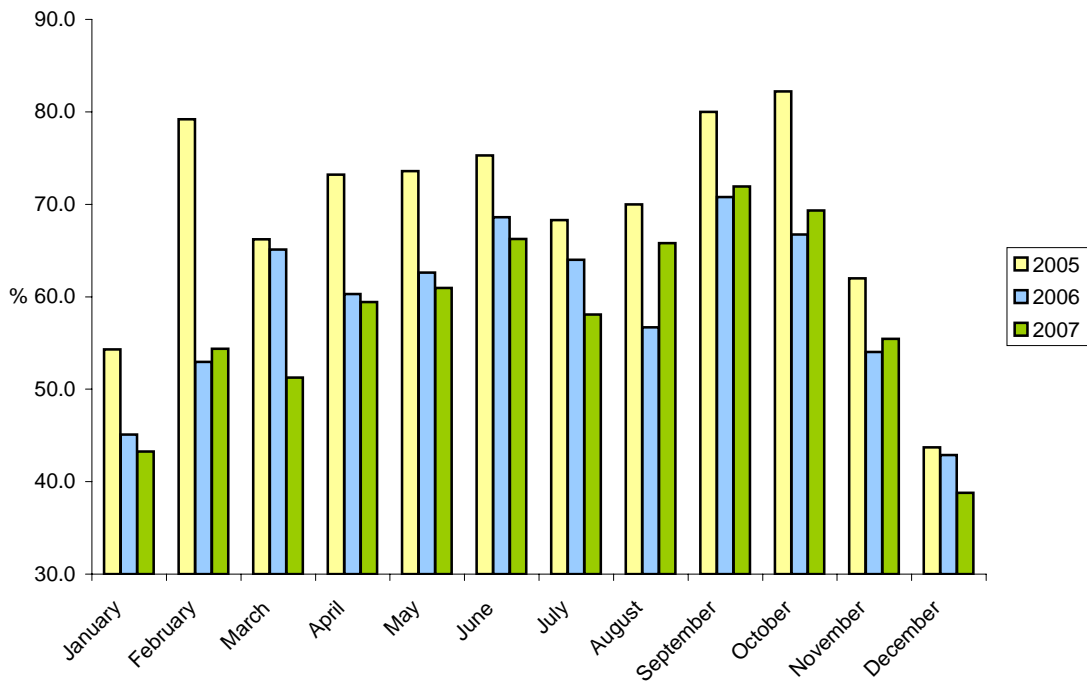


Table 3(c): % Room Occupancy Rates, 2002 - 2007

TOURIST ARRIVALS

<u>MONTH</u>	<u>2002</u>	<u>2003</u>	<u>2004</u>	<u>2005</u>	<u>2006</u>	<u>2007</u>
JANUARY	25.4	27.2	28.6	32.5	24.7	23.9
FEBRUARY	35.1	31.3	36.5	49.5	29.9	24.8
MARCH	43.3	40.9	43.8	42.2	35.8	30.8
APRIL	41.2	37.9	39.8	48.9	36.9	34.0
MAY	45.5	40.5	46.1	50.7	41.7	32.2
JUNE	40.8	45.5	45.5	54.6	47.8	35.4
JULY	47.1	40.9	46.9	42.5	39.4	34.4
AUGUST	44.8	42.5	48.8	46.1	40.5	38.3
SEPTEMBER	56.8	53.6	59.8	53.0	50.3	40.0
OCTOBER	44.9	47.1	50.6	55.0	48.8	40.7
NOVEMBER	36.6	40.3	44.2	36.5	36.8	29.1
DECEMBER	28.8	25.1	33.2	24.8	24.9	21.3
TOTAL	40.9	39.4	43.7	44.4	38.2	32.1

% ROOM OCCUPANCY RATES, TOURIST ARRIVALS, 2005 - 2007

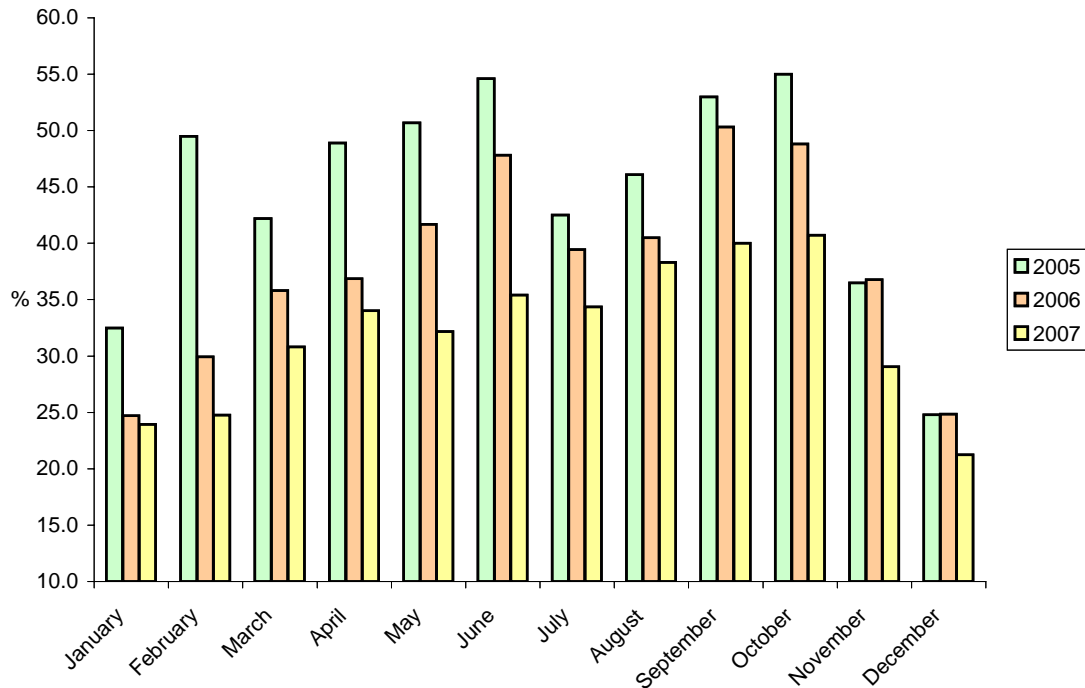


Table 4(a): Number of Arrivals by Month, All Hotels, 1981 - 1987

(00's)

ALL ARRIVALS

<u>MONTH</u>	<u>1981</u>	<u>1982</u>	<u>1983</u>	<u>1984</u>	<u>1985</u>	<u>1986</u>	<u>1987</u>
JANUARY	20	16	16	18	26	31	41
FEBRUARY	26	25	23	25	45	40	46
MARCH	33	37	26	26	49	46	63
APRIL	29	34	30	29	46	44	62
MAY	29	33	34	38	46	57	58
JUNE	28	32	27	28	46	51	51
JULY	31	29	31	33	52	45	44
AUGUST	32	34	32	34	54	52	51
SEPTEMBER	33	33	36	35	54	55	62
OCTOBER	31	31	30	40	51	50	63
NOVEMBER	23	23	25	30	46	49	60
DECEMBER	20	22	21	21	36	46	52
TOTAL	334	349	331	357	551	566	653

(00's)

TOURIST ARRIVALS

<u>MONTH</u>	<u>1981</u>	<u>1982</u>	<u>1983</u>	<u>1984</u>	<u>1985</u>	<u>1986</u>	<u>1987</u>
JANUARY	16	11	11	11	10	24	37
FEBRUARY	21	18	16	13	27	29	35
MARCH	26	24	18	17	36	38	50
APRIL	24	23	19	16	33	36	50
MAY	23	26	21	20	37	40	38
JUNE	23	23	20	21	35	39	35
JULY	21	23	20	21	38	34	36
AUGUST	23	22	21	23	43	40	41
SEPTEMBER	25	23	25	26	41	44	48
OCTOBER	25	20	19	27	35	42	48
NOVEMBER	18	17	16	20	35	43	48
DECEMBER	16	15	14	12	24	29	34
TOTAL	261	245	220	227	394	438	500

Note: Yearly totals have been rounded off and need not necessarily equal the sum of the rounded-off monthly figures.

Table 4(b): Number of Arrivals by Month, All Hotels, 1988 - 1994

(00's)

ALL ARRIVALS

<u>MONTH</u>	<u>1988</u>	<u>1989</u>	<u>1990</u>	<u>1991</u>	<u>1992</u>	<u>1993</u>	<u>1994</u>
JANUARY	46	34	34	34	23	19	25
FEBRUARY	47	43	41	34	30	24	24
MARCH	63	52	79	39	34	29	31
APRIL	61	53	84	36	36	30	31
MAY	60	46	60	42	40	38	39
JUNE	58	50	53	32	41	35	33
JULY	54	66	63	39	38	33	34
AUGUST	53	59	46	35	36	33	33
SEPTEMBER	58	74	58	43	41	44	43
OCTOBER	49	77	50	47	39	45	39
NOVEMBER	58	67	41	26	28	35	25
DECEMBER	42	58	39	25	24	25	22
TOTAL	649	679	648	432	410	391	379

(00's)

TOURIST ARRIVALS

<u>MONTH</u>	<u>1988</u>	<u>1989</u>	<u>1990</u>	<u>1991</u>	<u>1992</u>	<u>1993</u>	<u>1994</u>
JANUARY	32	24	20	19	16	15	17
FEBRUARY	36	35	24	19	22	15	17
MARCH	47	41	30	23	27	21	21
APRIL	48	41	34	21	28	21	21
MAY	46	36	28	24	29	26	24
JUNE	40	42	23	21	28	24	23
JULY	36	39	31	25	26	22	24
AUGUST	36	41	25	24	29	25	23
SEPTEMBER	38	44	31	24	26	29	29
OCTOBER	36	53	26	25	27	29	27
NOVEMBER	36	44	21	16	20	23	17
DECEMBER	26	35	20	17	19	19	16
TOTAL	457	475	313	260	299	270	259

Note: Yearly totals have been rounded off and need not necessarily equal the sum of the rounded-off monthly figures.

Table 4(c): Number of Arrivals by Month, All Hotels, 1995 - 2001

(00's)

ALL ARRIVALS

<u>MONTH</u>	<u>1995</u>	<u>1996</u>	<u>1997</u>	<u>1998</u>	<u>1999</u>	<u>2000</u>	<u>2001</u>
JANUARY	20	28	24	30	26	22	31
FEBRUARY	28	34	32	28	26	28	33
MARCH	34	40	33	31	36	39	45
APRIL	40	41	39	34	37	42	43
MAY	38	42	48	38	36	48	50
JUNE	39	41	47	35	38	48	50
JULY	46	38	43	34	34	40	50
AUGUST	44	39	55	42	43	46	53
SEPTEMBER	57	47	54	40	42	56	54
OCTOBER	41	43	39	42	43	48	51
NOVEMBER	31	33	38	36	37	39	43
DECEMBER	32	35	32	28	24	33	35
TOTAL	451	461	484	416	421	489	538

(00's)

TOURIST ARRIVALS

<u>MONTH</u>	<u>1995</u>	<u>1996</u>	<u>1997</u>	<u>1998</u>	<u>1999</u>	<u>2000</u>	<u>2001</u>
JANUARY	16	20	15	16	17	15	23
FEBRUARY	22	25	19	17	17	19	24
MARCH	24	27	19	21	23	28	32
APRIL	28	30	22	23	23	30	31
MAY	26	26	28	25	25	35	35
JUNE	27	26	27	24	25	36	34
JULY	33	27	28	23	22	29	37
AUGUST	31	30	33	30	28	35	41
SEPTEMBER	41	30	31	30	27	41	41
OCTOBER	32	31	28	29	30	36	38
NOVEMBER	25	22	20	24	23	29	34
DECEMBER	25	25	19	18	17	24	25
TOTAL	331	319	289	279	277	359	394

Note: Yearly totals have been rounded off and need not necessarily equal the sum of the rounded-off monthly figures.

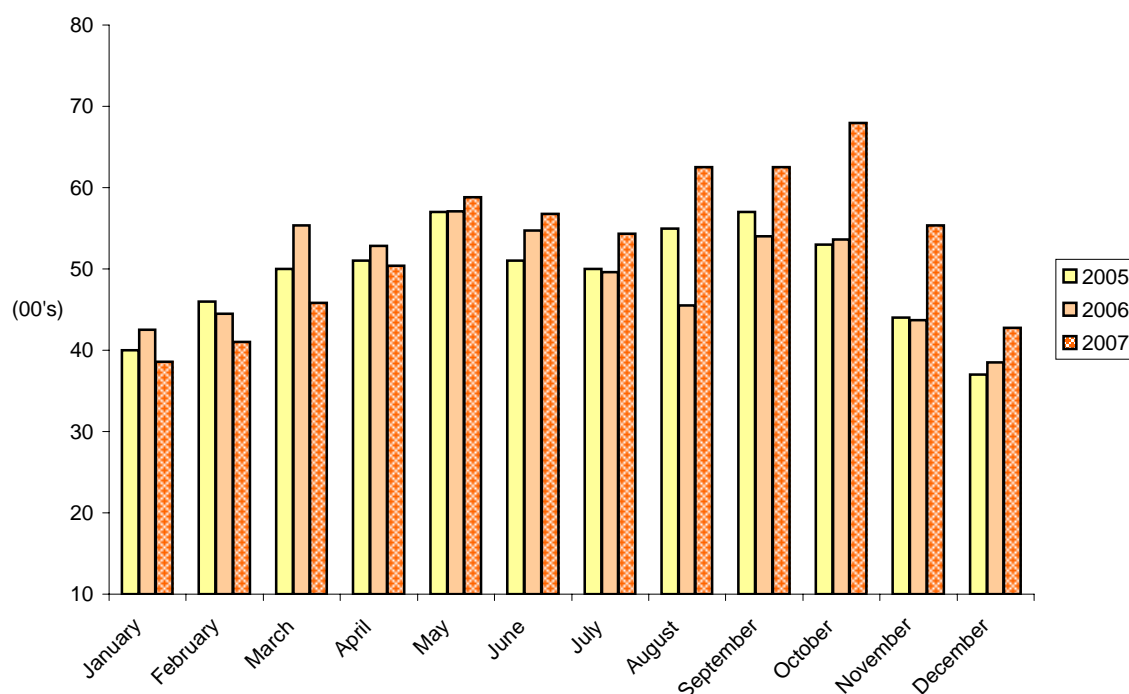
Table 4(d): Number of Arrivals by Month, All Hotels, 2002 - 2007

(00's)

ALL ARRIVALS

<u>MONTH</u>	<u>2002</u>	<u>2003</u>	<u>2004</u>	<u>2005</u>	<u>2006</u>	<u>2007</u>
JANUARY	32	37	38	40	43	39
FEBRUARY	41	44	44	46	45	41
MARCH	46	54	55	50	55	46
APRIL	45	50	47	51	53	50
MAY	51	56	57	57	57	59
JUNE	43	59	55	51	55	57
JULY	58	52	53	50	50	54
AUGUST	58	59	56	55	45	63
SEPTEMBER	66	58	62	57	54	63
OCTOBER	62	56	56	53	54	68
NOVEMBER	51	54	54	44	44	55
DECEMBER	41	39	39	37	38	43
TOTAL	594	617	617	588	592	637

ALL ARRIVALS AT HOTELS, 2005 - 2007



Note: Yearly totals have been rounded off and need not necessarily equal the sum of the rounded-off monthly figures.

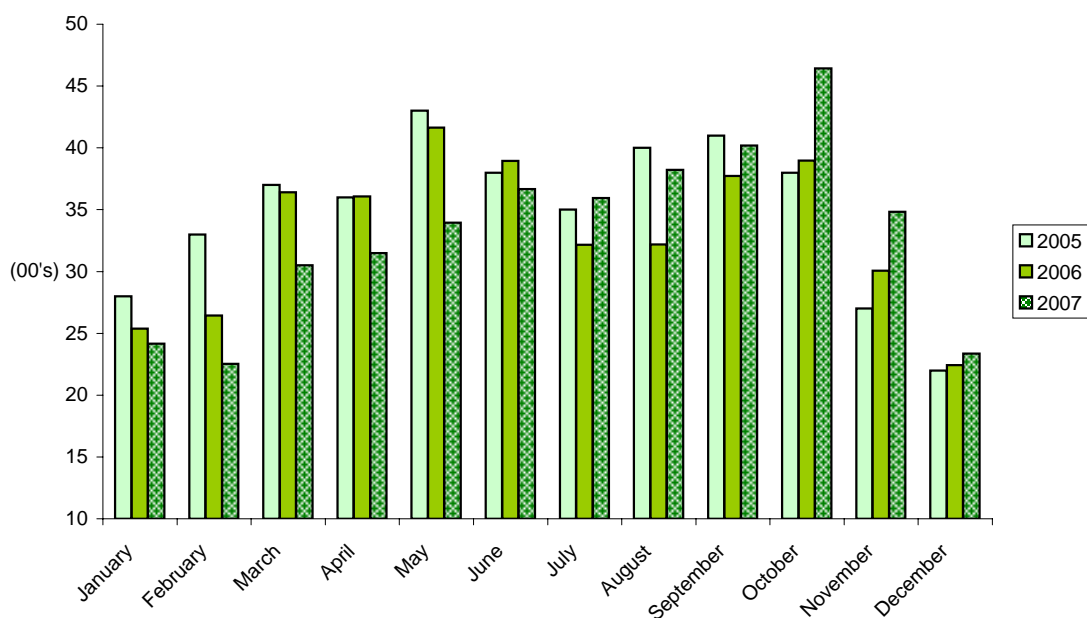
Table 4(e): Number of Arrivals by Month, All Hotels, 2002 - 2007

(00's)

TOURIST ARRIVALS

<u>MONTH</u>	<u>2002</u>	<u>2003</u>	<u>2004</u>	<u>2005</u>	<u>2006</u>	<u>2007</u>
JANUARY	23	23	27	28	25	24
FEBRUARY	30	29	30	33	26	23
MARCH	35	36	38	37	36	31
APRIL	32	32	34	36	36	31
MAY	38	35	44	43	42	34
JUNE	30	37	38	38	39	37
JULY	40	35	39	35	32	36
AUGUST	41	41	42	40	32	38
SEPTEMBER	47	40	46	41	38	40
OCTOBER	40	39	41	38	39	46
NOVEMBER	33	35	38	27	30	35
DECEMBER	27	26	28	22	22	23
TOTAL	415	409	445	419	398	398

TOURIST ARRIVALS AT HOTELS, 2005 - 2007



Note: Yearly totals have been rounded off and need not necessarily equal the sum of the rounded-off monthly figures.

Table 5(a): Guest Nights Sold/Offered, % Sleeper Occupancy, All Hotels, 1981 - 1984

<u>MONTH</u>	<u>ALL ARRIVALS</u>											
	<u>(000's)</u>				<u>(000's)</u>				<u>%</u>			
	<u>GUEST NIGHTS SOLD</u>				<u>GUEST NIGHTS OFFERED</u>				<u>SLEEPER OCCUPANCY</u>			
	<u>1981</u>	<u>1982</u>	<u>1983</u>	<u>1984</u>	<u>1981</u>	<u>1982</u>	<u>1983</u>	<u>1984</u>	<u>1981</u>	<u>1982</u>	<u>1983</u>	<u>1984</u>
JANUARY	10	9	9	9	44	43	45	46	23.2	20.2	19.0	20.7
FEBRUARY	13	14	11	13	40	40	41	43	31.9	35.2	27.7	30.0
MARCH	17	19	16	15	44	44	46	47	38.8	42.4	34.8	32.5
APRIL	18	22	16	18	44	44	45	45	40.3	50.5	35.9	39.9
MAY	16	23	20	23	44	45	46	46	37.1	50.0	43.2	50.5
JUNE	18	24	23	23	42	45	45	45	42.0	54.7	49.7	50.8
JULY	17	24	20	22	42	46	47	45	40.2	51.9	42.3	50.1
AUGUST	19	24	25	25	43	45	47	47	43.5	52.0	54.0	53.0
SEPTEMBER	19	22	25	27	43	43	46	44	44.1	51.7	54.6	61.0
OCTOBER	18	19	21	25	47	45	47	46	39.1	42.6	43.7	53.2
NOVEMBER	13	12	13	15	42	44	45	45	30.1	27.9	30.2	32.3
DECEMBER	10	11	11	11	44	45	46	47	23.6	25.6	24.4	22.9
TOTAL	188	223	210	226	519	529	546	546	36.2	42.2	38.4	41.3

Table 5(b): Guest Nights Sold/Offered, % Sleeper Occupancy, All Hotels, 1985 - 1988

<u>MONTH</u>	<u>ALL ARRIVALS</u>											
	<u>(000's)</u>				<u>(000's)</u>				<u>%</u>			
	<u>GUEST NIGHTS SOLD</u>				<u>GUEST NIGHTS OFFERED</u>				<u>SLEEPER OCCUPANCY</u>			
	<u>1985</u>	<u>1986</u>	<u>1987</u>	<u>1988</u>	<u>1985</u>	<u>1986</u>	<u>1987</u>	<u>1988</u>	<u>1985</u>	<u>1986</u>	<u>1987</u>	<u>1988</u>
JANUARY	11	13	19	16	45	43	46	46	24.3	30.1	42.1	35.8
FEBRUARY	18	15	18	19	41	38	42	44	42.7	39.0	43.9	42.6
MARCH	25	21	26	26	46	43	46	48	54.0	48.7	57.5	53.6
APRIL	25	18	24	26	45	42	43	45	56.8	42.0	55.6	57.1
MAY	23	25	25	26	47	45	45	47	50.3	57.2	55.7	55.1
JUNE	31	29	22	29	45	43	44	47	69.4	67.9	49.1	61.6
JULY	28	23	20	27	48	44	45	48	58.0	51.8	44.5	55.8
AUGUST	32	27	26	24	48	46	45	48	67.7	59.7	57.7	50.4
SEPTEMBER	32	29	29	26	46	44	45	44	68.2	64.8	65.6	60.4
OCTOBER	27	26	26	26	48	45	44	46	55.6	59.3	58.8	56.4
NOVEMBER	17	23	24	22	46	43	44	43	36.9	54.1	54.4	51.4
DECEMBER	13	17	20	19	47	44	46	45	27.3	38.5	42.5	42.6
TOTAL	282	266	279	286	552	520	535	551	51.0	51.3	52.3	52.0

Note: Yearly totals have been rounded off and need not necessarily equal the sum of the rounded-off monthly figures.

Table 5(c): Guest Nights Sold/Offered, % Sleeper Occupancy, All Hotels, 1989 - 1992**ALL ARRIVALS**

<u>MONTH</u>	<u>(000's)</u>				<u>(000's)</u>				<u>%</u>			
	<u>GUEST NIGHTS SOLD</u>				<u>GUEST NIGHTS OFFERED</u>				<u>SLEEPER OCCUPANCY</u>			
	<u>1989</u>	<u>1990</u>	<u>1991</u>	<u>1992</u>	<u>1989</u>	<u>1990</u>	<u>1991</u>	<u>1992</u>	<u>1989</u>	<u>1990</u>	<u>1991</u>	<u>1992</u>
JANUARY	15	11	12	9	42	37	40	42	35.2	31.2	29.4	20.6
FEBRUARY	18	14	13	9	40	37	37	41	46.0	37.3	34.5	22.8
MARCH	22	19	17	14	42	42	44	46	52.0	45.3	37.5	29.6
APRIL	23	23	14	14	42	41	41	42	54.8	55.4	34.0	32.6
MAY	19	21	17	15	44	42	41	43	41.9	50.4	40.2	35.6
JUNE	19	15	16	16	43	39	44	47	43.9	37.3	35.8	34.8
JULY	20	18	16	16	43	42	43	45	46.8	43.8	37.9	35.2
AUGUST	19	15	16	14	43	41	40	44	45.1	35.2	41.2	32.2
SEPTEMBER	19	18	17	16	42	41	44	41	46.0	44.4	39.2	39.7
OCTOBER	19	18	18	15	40	40	43	42	46.2	44.5	42.5	34.6
NOVEMBER	14	12	13	10	38	40	41	32	38.2	30.2	31.1	32.6
DECEMBER	13	13	10	9	42	39	45	33	31.2	32.4	22.4	27.0
TOTAL	220	197	178	157	501	481	502	497	44.0	40.8	35.5	31.6

Table 5(d): Guest Nights Sold/Offered, % Sleeper Occupancy, All Hotels, 1993 - 1996**ALL ARRIVALS**

<u>MONTH</u>	<u>(000's)</u>				<u>(000's)</u>				<u>%</u>			
	<u>GUEST NIGHTS SOLD</u>				<u>GUEST NIGHTS OFFERED</u>				<u>SLEEPER OCCUPANCY</u>			
	<u>1993</u>	<u>1994</u>	<u>1995</u>	<u>1996</u>	<u>1993</u>	<u>1994</u>	<u>1995</u>	<u>1996</u>	<u>1993</u>	<u>1994</u>	<u>1995</u>	<u>1996</u>
JANUARY	7	10	6	8	33	34	32	32	21.5	29.4	19.0	24.9
FEBRUARY	9	9	10	9	30	30	28	30	30.1	31.3	34.9	29.9
MARCH	12	12	10	12	33	33	31	32	36.2	37.2	33.4	36.3
APRIL	12	12	13	12	32	31	25	31	38.3	39.2	49.5	39.1
MAY	16	15	13	14	34	35	31	32	45.6	42.5	41.4	43.0
JUNE	15	14	14	13	32	33	30	30	48.0	40.6	46.3	37.2
JULY	14	15	15	12	32	35	32	31	41.8	42.4	48.2	39.0
AUGUST	14	13	15	13	33	35	32	31	44.0	37.0	46.2	42.3
SEPTEMBER	18	16	18	16	32	33	31	31	56.2	48.9	58.0	51.9
OCTOBER	17	15	13	13	34	35	32	31	50.9	43.9	41.1	42.8
NOVEMBER	13	9	9	10	32	33	31	30	39.4	27.8	28.1	31.3
DECEMBER	10	9	9	9	33	34	32	31	29.6	25.2	26.7	29.0
TOTAL	157	149	144	141	391	401	369	372	40.2	37.2	39.2	37.8

Note: Yearly totals have been rounded off and need not necessarily equal the sum of the rounded-off monthly figures.

Table 5(e): Guest Nights Sold/Offered, % Sleeper Occupancy, All Hotels, 1997 - 2000**ALL ARRIVALS**

<u>MONTH</u>	<u>(000's)</u>				<u>(000's)</u>				<u>%</u>			
	<u>GUEST NIGHTS SOLD</u>				<u>GUEST NIGHTS OFFERED</u>				<u>SLEEPER OCCUPANCY</u>			
	<u>1997</u>	<u>1998</u>	<u>1999</u>	<u>2000</u>	<u>1997</u>	<u>1998</u>	<u>1999</u>	<u>2000</u>	<u>1997</u>	<u>1998</u>	<u>1999</u>	<u>2000</u>
JANUARY	8	7	8	6	31	30	29	31	24.1	24.8	28.8	20.0
FEBRUARY	10	9	9	9	29	25	26	29	34.1	35.4	34.2	30.4
MARCH	10	11	13	12	31	28	29	31	33.0	38.8	45.5	37.5
APRIL	11	11	13	14	31	26	29	30	36.3	42.4	44.3	45.0
MAY	14	12	13	19	32	27	29	31	45.0	45.6	43.7	60.3
JUNE	13	13	14	17	30	28	29	30	44.4	45.9	49.1	56.6
JULY	14	13	13	16	31	29	29	31	44.1	43.9	44.5	50.2
AUGUST	16	16	16	16	31	29	29	31	51.3	54.4	56.3	51.8
SEPTEMBER	16	17	16	19	31	28	29	31	50.7	59.8	56.9	61.7
OCTOBER	14	15	15	15	31	29	31	31	44.1	50.2	50.0	48.7
NOVEMBER	10	12	14	12	31	28	30	30	31.7	43.8	46.0	38.9
DECEMBER	9	9	8	11	31	29	31	31	28.2	32.2	25.6	34.1
TOTAL	144	145	154	164	370	335	351	368	39.0	43.1	43.8	44.6

Table 5(f): Guest Nights Sold/Offered, % Sleeper Occupancy, All Hotels, 2001 - 2004**ALL ARRIVALS**

<u>MONTH</u>	<u>(000's)</u>				<u>(000's)</u>				<u>%</u>			
	<u>GUEST NIGHTS SOLD</u>				<u>GUEST NIGHTS OFFERED</u>				<u>SLEEPER OCCUPANCY</u>			
	<u>2001</u>	<u>2002</u>	<u>2003</u>	<u>2004</u>	<u>2001</u>	<u>2002</u>	<u>2003</u>	<u>2004</u>	<u>2001</u>	<u>2002</u>	<u>2003</u>	<u>2004</u>
JANUARY	8	9	10	11	31	31	31	29	27.0	30.5	33.1	36.7
FEBRUARY	11	12	13	13	28	28	28	29	40.0	42.9	45.5	45.2
MARCH	15	15	16	17	31	31	31	31	47.9	47.7	51.8	56.3
APRIL	15	14	15	15	30	30	30	30	48.4	46.3	51.1	50.0
MAY	17	16	17	18	31	31	31	31	55.0	51.3	54.4	57.8
JUNE	18	13	18	18	30	30	30	30	58.3	43.6	60.9	59.4
JULY	17	18	16	19	31	31	31	31	53.5	56.8	53.2	61.2
AUGUST	18	18	18	21	31	31	31	31	57.4	58.8	58.2	65.9
SEPTEMBER	20	21	20	22	30	30	30	31	64.6	69.3	64.8	71.7
OCTOBER	18	19	18	19	31	31	31	31	57.3	61.3	57.0	60.1
NOVEMBER	13	15	15	17	30	30	30	30	43.5	50.9	49.5	55.0
DECEMBER	11	11	11	13	31	31	31	31	34.1	36.4	34.6	40.1
TOTAL	179	182	188	202	366	367	367	366	48.9	49.7	51.2	55.1

Note: Yearly totals have been rounded off and need not necessarily equal the sum of the rounded-off monthly figures.

Table 5(g): Guest Nights Sold, All Hotels, 2005 - 2007

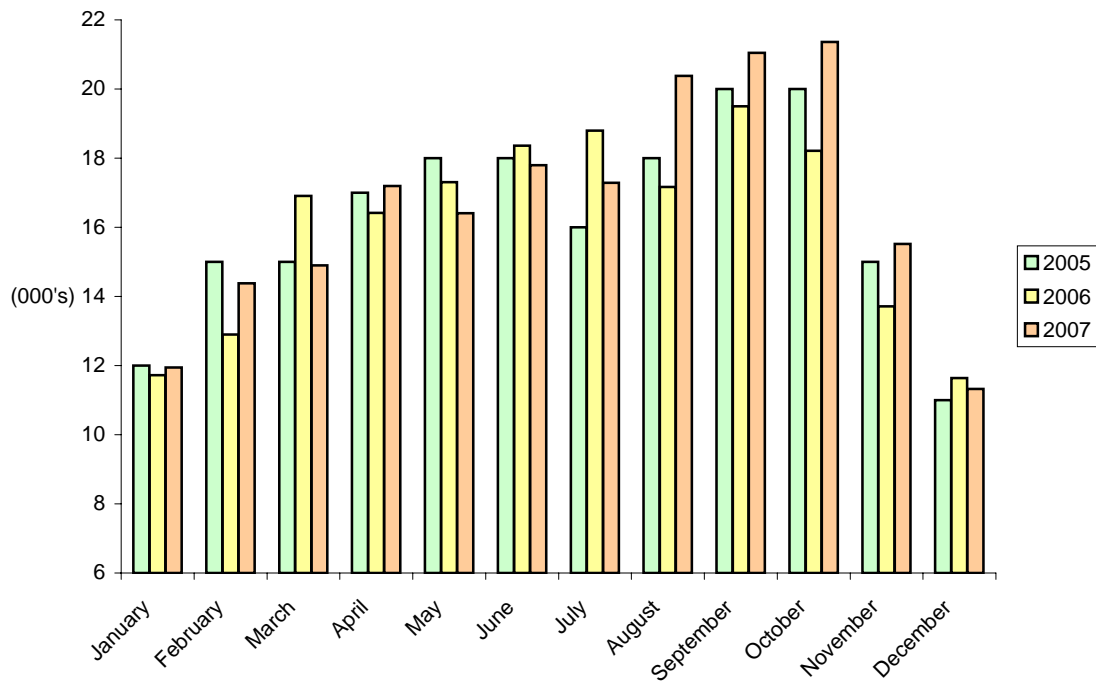
ALL ARRIVALS

(000's)

GUEST NIGHTS SOLD

<u>MONTH</u>	<u>2005</u>	<u>2006</u>	<u>2007</u>
JANUARY	12	12	12
FEBRUARY	15	13	14
MARCH	15	17	15
APRIL	17	16	17
MAY	18	17	16
JUNE	18	18	18
JULY	16	19	17
AUGUST	18	17	20
SEPTEMBER	20	19	21
OCTOBER	20	18	21
NOVEMBER	15	14	16
DECEMBER	11	12	11
TOTAL	196	192	200

GUEST NIGHTS SOLD, ALL ARRIVALS, 2005 - 2007



Note: Yearly totals have been rounded off and need not necessarily equal the sum of the rounded-off monthly figures.

Table 5(h): Guest Nights Offered, All Hotels, 2005 - 2007

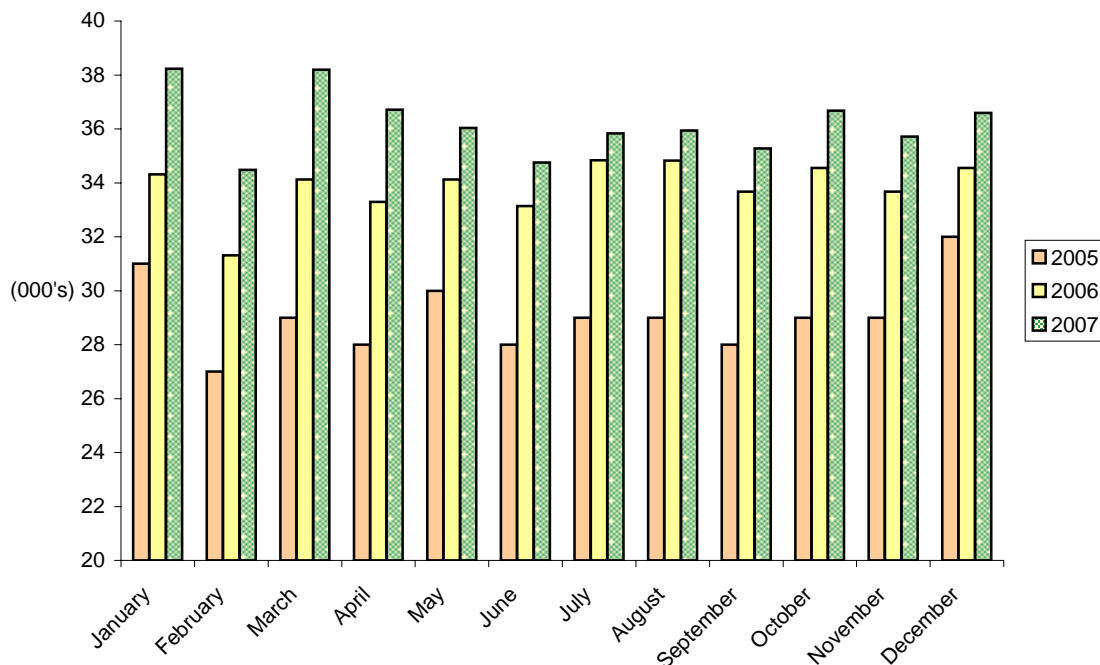
ALL ARRIVALS

(000's)

GUEST NIGHTS OFFERED

<u>MONTH</u>	<u>2005</u>	<u>2006</u>	<u>2007</u>
JANUARY	31	34	38
FEBRUARY	27	31	34
MARCH	29	34	38
APRIL	28	33	37
MAY	30	34	36
JUNE	28	33	35
JULY	29	35	36
AUGUST	29	35	36
SEPTEMBER	28	34	35
OCTOBER	29	35	37
NOVEMBER	29	34	36
DECEMBER	32	35	37
TOTAL	349	406	434

GUEST NIGHTS OFFERED, ALL ARRIVALS, 2005 - 2007



Note: Yearly totals have been rounded off and need not necessarily equal the sum of the rounded-off monthly figures.

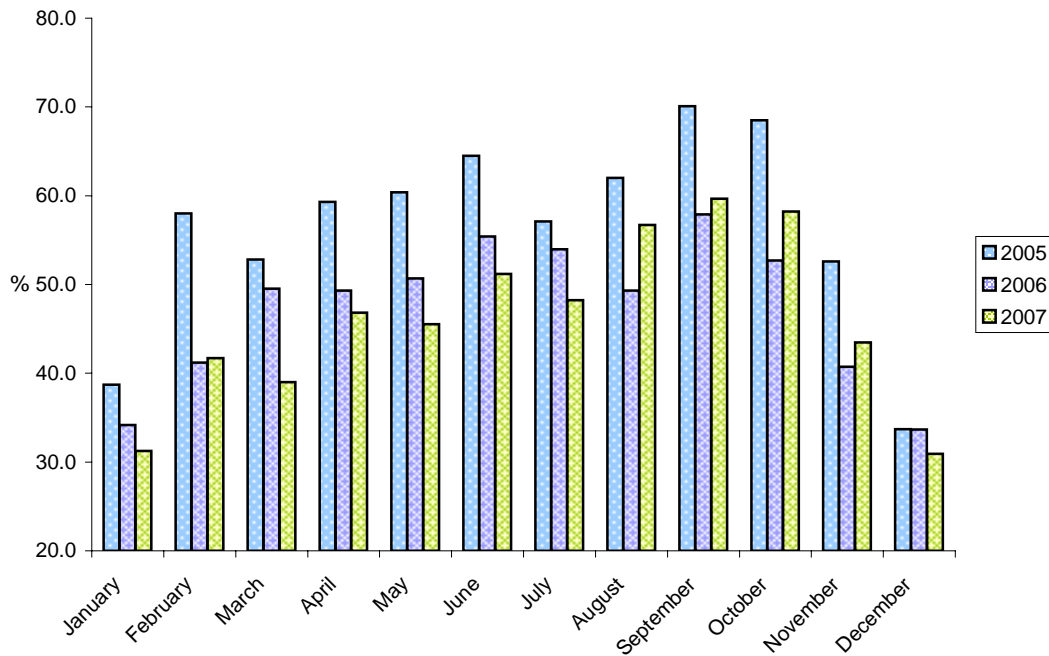
Table 5(i): % Sleeper Occupancy, All Hotels, 2005 - 2007

ALL ARRIVALS

%

<u>MONTH</u>	<u>2005</u>	<u>2006</u>	<u>2007</u>
JANUARY	38.7	34.2	31.3
FEBRUARY	58.0	41.2	41.7
MARCH	52.8	49.5	39.0
APRIL	59.3	49.3	46.8
MAY	60.4	50.7	45.5
JUNE	64.5	55.4	51.2
JULY	57.1	54.0	48.2
AUGUST	62.0	49.3	56.7
SEPTEMBER	70.1	57.9	59.7
OCTOBER	68.5	52.7	58.2
NOVEMBER	52.6	40.7	43.5
DECEMBER	33.7	33.7	30.9
TOTAL	56.2	47.3	45.9

% SLEEPER OCCUPANCY, ALL ARRIVALS, 2005 - 2007



Note: Yearly totals have been rounded off and need not necessarily equal the sum of the rounded-off monthly figures.

Table 6(a): Guest Nights Sold/Offered, % Sleeper Occupancy, All Hotels, 1981 - 1984**TOURIST ARRIVALS**

<u>MONTH</u>	<u>(000's)</u>				<u>(000's)</u>				<u>%</u>			
	<u>GUEST NIGHTS SOLD</u>				<u>GUEST NIGHTS OFFERED</u>				<u>SLEEPER OCCUPANCY</u>			
	<u>1981</u>	<u>1982</u>	<u>1983</u>	<u>1984</u>	<u>1981</u>	<u>1982</u>	<u>1983</u>	<u>1984</u>	<u>1981</u>	<u>1982</u>	<u>1983</u>	<u>1984</u>
JANUARY	8	7	7	7	44	43	45	46	18.0	15.3	15.5	15.0
FEBRUARY	9	10	8	8	40	40	41	43	21.4	24.8	20.7	19.4
MARCH	13	13	11	12	44	44	46	47	30.4	30.4	24.7	24.6
APRIL	14	16	10	13	44	44	45	45	31.1	36.1	23.4	28.4
MAY	13	16	14	15	44	45	46	46	30.4	35.2	29.4	33.2
JUNE	14	19	18	18	42	45	45	45	32.7	42.2	38.7	40.6
JULY	12	19	16	18	42	46	47	45	28.5	40.5	33.6	40.0
AUGUST	15	18	19	20	43	45	47	47	34.6	40.2	41.9	42.0
SEPTEMBER	16	16	19	22	43	43	46	44	37.2	43.4	41.7	50.2
OCTOBER	15	14	14	19	47	45	47	46	32.1	29.9	30.5	41.0
NOVEMBER	10	9	10	11	42	44	45	45	24.4	21.4	21.2	24.6
DECEMBER	8	8	9	8	44	45	46	47	18.0	18.3	18.4	17.4
TOTAL	147	165	155	171	519	529	546	546	28.3	31.1	28.4	31.3

Table 6(b): Guest Nights Sold/Offered, % Sleeper Occupancy, All Hotels, 1985 - 1988**TOURIST ARRIVALS**

<u>MONTH</u>	<u>(000's)</u>				<u>(000's)</u>				<u>%</u>			
	<u>GUEST NIGHTS SOLD</u>				<u>GUEST NIGHTS OFFERED</u>				<u>SLEEPER OCCUPANCY</u>			
	<u>1985</u>	<u>1986</u>	<u>1987</u>	<u>1988</u>	<u>1985</u>	<u>1986</u>	<u>1987</u>	<u>1988</u>	<u>1985</u>	<u>1986</u>	<u>1987</u>	<u>1988</u>
JANUARY	8	10	15	13	45	43	46	46	16.5	22.1	33.6	27.5
FEBRUARY	14	12	15	14	41	38	42	44	33.8	31.0	34.8	32.2
MARCH	19	16	21	19	46	43	46	48	42.2	38.1	46.3	39.8
APRIL	18	13	19	20	45	42	43	45	40.2	30.7	44.9	44.8
MAY	18	19	18	19	47	45	45	47	39.4	41.9	38.6	40.3
JUNE	24	23	16	20	45	43	44	47	52.9	52.8	36.9	43.5
JULY	23	18	15	19	48	44	45	48	47.5	41.0	34.3	39.2
AUGUST	27	21	19	17	48	46	45	48	57.0	46.3	42.5	34.5
SEPTEMBER	26	21	22	17	46	44	45	44	56.7	48.1	49.7	37.8
OCTOBER	19	20	21	17	48	45	44	46	40.2	45.3	46.4	37.9
NOVEMBER	13	18	18	14	46	43	44	43	28.4	41.7	41.8	32.5
DECEMBER	9	12	14	11	47	44	46	45	18.8	27.5	29.8	24.3
TOTAL	218	203	213	200	552	520	535	551	39.6	38.6	40.0	36.2

Note: Yearly totals have been rounded off and need not necessarily equal the sum of the rounded-off monthly figures.

Table 6(c): Guest Nights Sold/Offered, % Sleeper Occupancy, All Hotels, 1989 - 1992**TOURIST ARRIVALS**

<u>MONTH</u>	<u>(000's)</u>				<u>(000's)</u>				<u>%</u>			
	<u>GUEST NIGHTS SOLD</u>				<u>GUEST NIGHTS OFFERED</u>				<u>SLEEPER OCCUPANCY</u>			
	<u>1989</u>	<u>1990</u>	<u>1991</u>	<u>1992</u>	<u>1989</u>	<u>1990</u>	<u>1991</u>	<u>1992</u>	<u>1989</u>	<u>1990</u>	<u>1991</u>	<u>1992</u>
JANUARY	10	8	7	5	42	37	40	42	23.7	22.7	17.7	12.9
FEBRUARY	13	10	8	6	40	37	37	41	33.4	27.1	20.2	15.4
MARCH	15	13	8	9	42	42	44	46	36.2	31.0	19.1	19.3
APRIL	16	14	9	9	42	41	41	42	37.0	34.0	21.9	21.7
MAY	12	12	10	9	44	42	41	43	27.9	29.4	23.3	20.7
JUNE	14	10	8	10	43	39	44	47	32.7	24.3	19.4	22.0
JULY	13	12	10	10	43	42	43	45	30.6	27.4	23.2	21.3
AUGUST	13	10	8	10	43	41	40	44	30.6	23.1	21.3	22.0
SEPTEMBER	12	12	8	9	42	41	44	41	29.8	30.0	18.2	22.7
OCTOBER	14	11	10	9	40	40	43	42	34.0	27.8	23.3	20.8
NOVEMBER	11	8	7	6	38	40	41	32	27.6	19.5	16.4	20.1
DECEMBER	9	8	6	6	42	39	45	33	21.7	20.9	12.9	17.5
TOTAL	152	128	99	98	501	481	502	497	30.4	26.5	19.7	19.8

Table 6(d): Guest Nights Sold/Offered, % Sleeper Occupancy, All Hotels, 1993 - 1996**TOURIST ARRIVALS**

<u>MONTH</u>	<u>(000's)</u>				<u>(000's)</u>				<u>%</u>			
	<u>GUEST NIGHTS SOLD</u>				<u>GUEST NIGHTS OFFERED</u>				<u>SLEEPER OCCUPANCY</u>			
	<u>1993</u>	<u>1994</u>	<u>1995</u>	<u>1996</u>	<u>1993</u>	<u>1994</u>	<u>1995</u>	<u>1996</u>	<u>1993</u>	<u>1994</u>	<u>1995</u>	<u>1996</u>
JANUARY	4	7	5	5	33	34	32	32	12.4	19.5	15.1	16.4
FEBRUARY	5	6	7	7	30	30	28	30	17.7	21.1	25.8	22.8
MARCH	8	8	8	9	33	33	31	32	23.0	24.5	26.4	26.7
APRIL	8	9	10	10	32	31	25	31	25.2	27.1	38.1	30.9
MAY	10	10	9	10	34	35	31	32	28.5	28.5	30.8	30.9
JUNE	10	9	11	9	32	33	30	30	32.7	28.3	37.2	30.5
JULY	8	10	11	9	32	35	32	31	26.2	28.7	36.2	29.3
AUGUST	10	8	11	10	33	35	32	31	30.5	25.6	34.8	32.0
SEPTEMBER	12	12	14	10	32	33	31	31	36.8	35.2	45.6	34.3
OCTOBER	11	11	11	10	34	35	32	31	33.2	30.4	34.1	30.9
NOVEMBER	9	7	7	7	32	33	31	30	27.8	20.6	23.8	21.5
DECEMBER	7	6	7	6	33	34	32	31	21.8	18.9	21.8	20.7
TOTAL	103	103	113	101	391	401	369	372	26.4	25.8	30.7	27.2

Note: Yearly totals have been rounded off and need not necessarily equal the sum of the rounded-off monthly figures.

Table 6(e): Guest Nights Sold/Offered, % Sleeper Occupancy, All Hotels, 1997 - 2000**TOURIST ARRIVALS**

<u>MONTH</u>	<u>(000's)</u>				<u>(000's)</u>				<u>%</u>			
	<u>GUEST NIGHTS SOLD</u>				<u>GUEST NIGHTS OFFERED</u>				<u>SLEEPER OCCUPANCY</u>			
	<u>1997</u>	<u>1998</u>	<u>1999</u>	<u>2000</u>	<u>1997</u>	<u>1998</u>	<u>1999</u>	<u>2000</u>	<u>1997</u>	<u>1998</u>	<u>1999</u>	<u>2000</u>
JANUARY	5	4	5	4	31	30	29	31	15.2	14.4	17.2	13.0
FEBRUARY	6	5	6	6	29	25	26	29	22.3	21.4	21.8	20.0
MARCH	7	7	8	8	31	28	29	31	21.3	25.8	27.7	25.9
APRIL	7	7	8	9	31	26	29	30	23.9	28.8	27.3	30.8
MAY	10	8	9	12	32	27	29	31	29.9	30.6	30.0	39.1
JUNE	9	9	9	11	30	28	29	30	28.9	30.5	31.4	36.6
JULY	9	8	8	10	31	29	29	31	28.6	28.4	27.6	33.4
AUGUST	11	10	10	12	31	29	29	31	34.5	36.5	35.2	37.6
SEPTEMBER	11	12	10	14	31	28	29	31	34.8	41.5	36.2	44.3
OCTOBER	9	10	11	10	31	29	31	31	28.3	34.6	34.3	31.6
NOVEMBER	6	8	9	8	31	28	30	30	20.9	27.1	28.8	26.7
DECEMBER	6	6	5	7	31	29	31	31	18.9	19.5	17.3	21.6
TOTAL	95	95	98	111	370	335	351	368	25.6	28.2	27.9	30.1

Table 6(f): Guest Nights Sold/Offered, % Sleeper Occupancy, All Hotels, 2001 - 2004**TOURIST ARRIVALS**

<u>MONTH</u>	<u>(000's)</u>				<u>(000's)</u>				<u>%</u>			
	<u>GUEST NIGHTS SOLD</u>				<u>GUEST NIGHTS OFFERED</u>				<u>SLEEPER OCCUPANCY</u>			
	<u>2001</u>	<u>2002</u>	<u>2003</u>	<u>2004</u>	<u>2001</u>	<u>2002</u>	<u>2003</u>	<u>2004</u>	<u>2001</u>	<u>2002</u>	<u>2003</u>	<u>2004</u>
JANUARY	6	6	6	7	31	31	31	29	19.3	20.4	20.6	22.9
FEBRUARY	8	8	8	8	28	28	28	29	26.9	28.8	29.2	27.9
MARCH	9	11	11	11	31	31	31	31	30.7	34.5	34.0	37.0
APRIL	9	10	10	10	30	30	30	30	29.1	33.0	31.5	33.9
MAY	11	11	11	12	31	31	31	31	34.9	36.5	34.5	39.6
JUNE	12	10	12	11	30	30	30	30	39.5	33.0	38.5	37.4
JULY	11	12	11	15	31	31	31	31	37.0	38.7	34.8	47.4
AUGUST	12	13	13	16	31	31	31	31	40.0	40.7	40.4	50.7
SEPTEMBER	14	15	14	17	30	30	30	31	46.3	48.7	46.5	55.2
OCTOBER	13	13	12	15	31	31	31	31	40.6	40.9	40.0	48.2
NOVEMBER	9	9	10	13	30	30	30	30	29.6	29.8	33.2	41.5
DECEMBER	7	7	6	10	31	31	31	31	22.1	22.9	20.9	30.4
TOTAL	121	125	123	145	366	367	367	366	33.0	34.0	33.7	39.5

Note: Yearly totals have been rounded off and need not necessarily equal the sum of the rounded-off monthly figures.

Table 6(g): Guest Nights Sold, All Hotels, 2005 - 2007

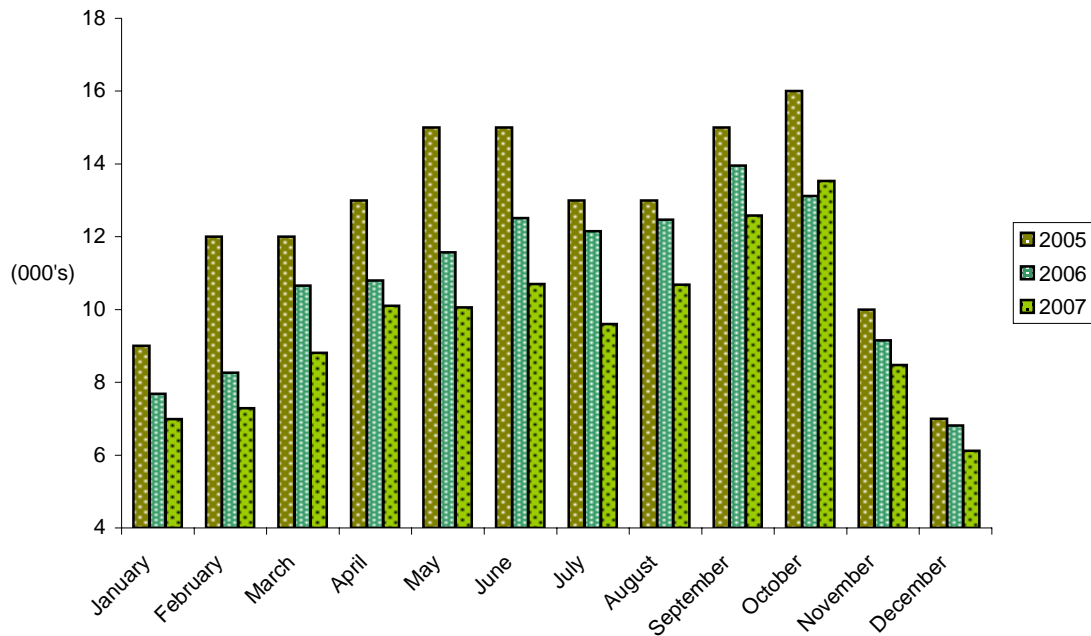
TOURIST ARRIVALS

(000's)

GUEST NIGHTS SOLD

<u>MONTH</u>	<u>2005</u>	<u>2006</u>	<u>2007</u>
JANUARY	9	8	7
FEBRUARY	12	8	7
MARCH	12	11	9
APRIL	13	11	10
MAY	15	12	10
JUNE	15	13	11
JULY	13	12	10
AUGUST	13	12	11
SEPTEMBER	15	14	13
OCTOBER	16	13	14
NOVEMBER	10	9	8
DECEMBER	7	7	6
TOTAL	150	129	115

GUEST NIGHTS SOLD, TOURIST ARRIVALS, 2005 - 2007



Note: Yearly totals have been rounded off and need not necessarily equal the sum of the rounded-off monthly figures.

Table 6(h): Guest Nights Offered, All Hotels, 2005 - 2007

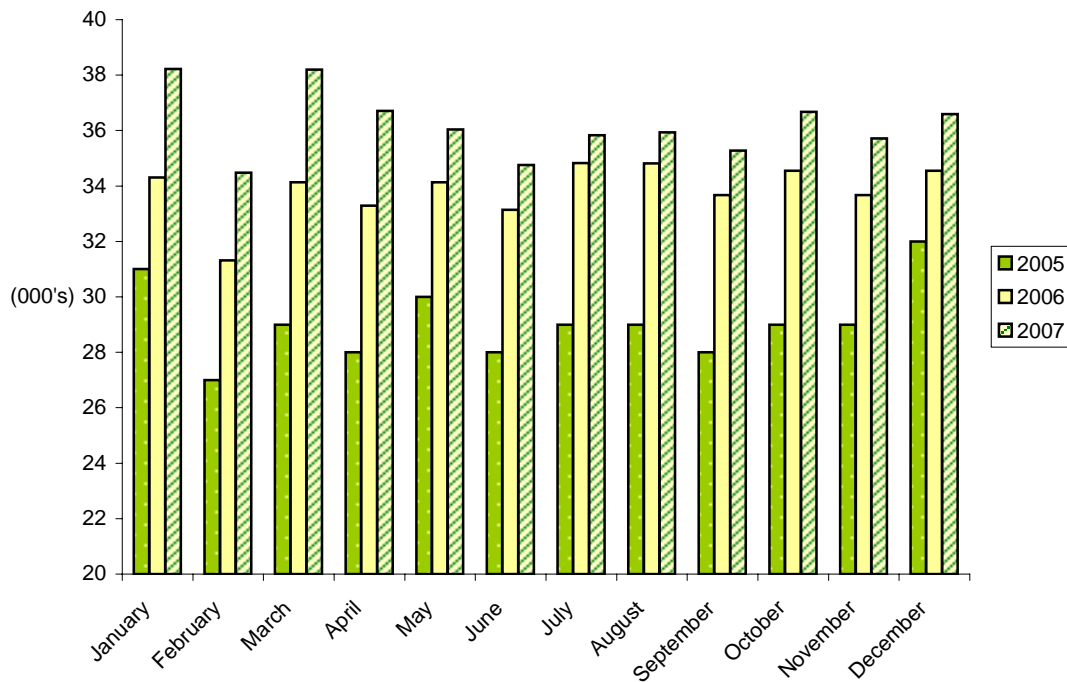
TOURIST ARRIVALS

(000's)

GUEST NIGHTS OFFERED

<u>MONTH</u>	<u>2005</u>	<u>2006</u>	<u>2007</u>
JANUARY	31	34	38
FEBRUARY	27	31	34
MARCH	29	34	38
APRIL	28	33	37
MAY	30	34	36
JUNE	28	33	35
JULY	29	35	36
AUGUST	29	35	36
SEPTEMBER	28	34	35
OCTOBER	29	35	37
NOVEMBER	29	34	36
DECEMBER	32	35	37
TOTAL	349	406	434

GUEST NIGHTS OFFERED, TOURIST ARRIVALS, 2005 - 2007



Note: Yearly totals have been rounded off and need not necessarily equal the sum of the rounded-off monthly figures.

Table 6(i): % Sleeper Occupancy, All Hotels, 2005 - 2007

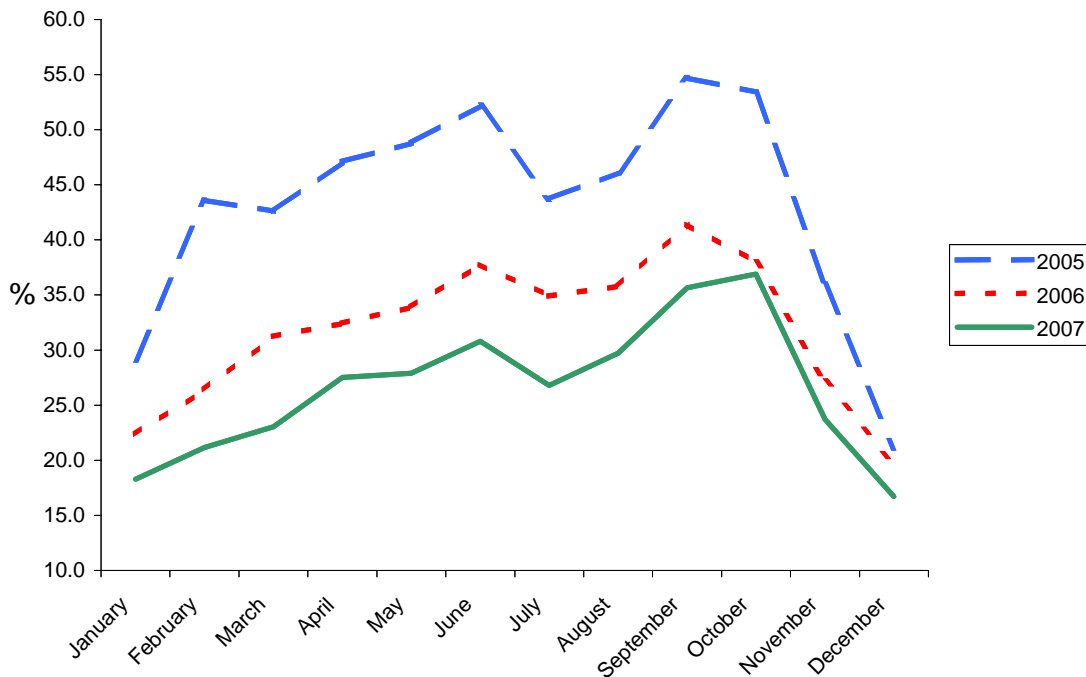
TOURIST ARRIVALS

%

SLEEPER OCCUPANCY

<u>MONTH</u>	<u>2005</u>	<u>2006</u>	<u>2007</u>
JANUARY	29.1	22.4	18.3
FEBRUARY	43.6	26.4	21.1
MARCH	42.6	31.2	23.1
APRIL	47.1	32.4	27.5
MAY	48.8	33.9	27.9
JUNE	52.2	37.8	30.8
JULY	43.7	34.9	26.8
AUGUST	46.1	35.8	29.7
SEPTEMBER	54.7	41.4	35.7
OCTOBER	53.4	38.0	36.9
NOVEMBER	36.0	27.2	23.7
DECEMBER	21.1	19.7	16.7
TOTAL	42.9	31.7	26.5

% SLEEPER OCCUPANCY, TOURIST ARRIVALS, 2005 - 2007



Note: Yearly totals have been rounded off and need not necessarily equal the sum of the rounded-off monthly figures.

Table 7(a): Average Length of Stay Per Person (Nights), All Hotels, 1996 - 2007

ALL ARRIVALS

<u>YEAR</u>	<u>JAN</u>	<u>FEB</u>	<u>MAR</u>	<u>APR</u>	<u>MAY</u>	<u>JUN</u>	<u>JUL</u>	<u>AUG</u>	<u>SEP</u>	<u>OCT</u>	<u>NOV</u>	<u>DEC</u>	<u>TOTAL</u>
1996	2.8	2.6	2.9	3.0	3.2	3.3	3.2	3.4	3.4	3.1	2.9	2.6	3.1
1997	3.1	3.0	3.1	2.9	3.0	2.9	3.2	2.9	2.9	3.5	2.6	2.7	3.0
1998	2.5	3.2	3.5	3.2	3.3	3.7	3.7	3.7	4.2	3.5	3.5	3.3	3.5
1999	3.3	3.5	3.7	3.5	3.6	3.8	3.8	3.8	3.9	3.6	3.8	3.3	3.7
2000	2.9	3.2	3.0	3.2	3.9	3.5	3.9	3.5	3.4	3.1	3.0	3.2	3.4
2001	2.7	3.4	3.3	3.4	3.4	3.5	3.3	3.4	3.6	3.5	3.5	3.1	3.3
2002	3.0	2.9	3.2	3.1	3.1	3.0	3.1	3.1	3.2	3.1	3.0	2.8	3.1
2003	2.8	2.9	3.0	3.1	3.0	3.1	3.1	3.1	3.4	3.2	2.8	2.7	3.0
2004	2.9	2.9	3.2	3.2	3.1	3.2	3.6	3.7	3.5	3.4	3.1	3.2	3.3
2005	3.0	3.4	3.1	3.3	3.2	3.6	3.3	3.3	3.5	3.8	3.5	2.9	3.3
2006	2.8	2.9	3.1	3.1	3.0	3.4	3.8	3.8	3.6	3.4	3.1	3.0	3.2
2007	3.1	3.5	3.3	3.4	2.8	3.1	3.2	3.3	3.4	3.1	2.8	2.6	3.1

AVERAGE LENGTH OF STAY, ALL ARRIVALS, 2005 - 2007

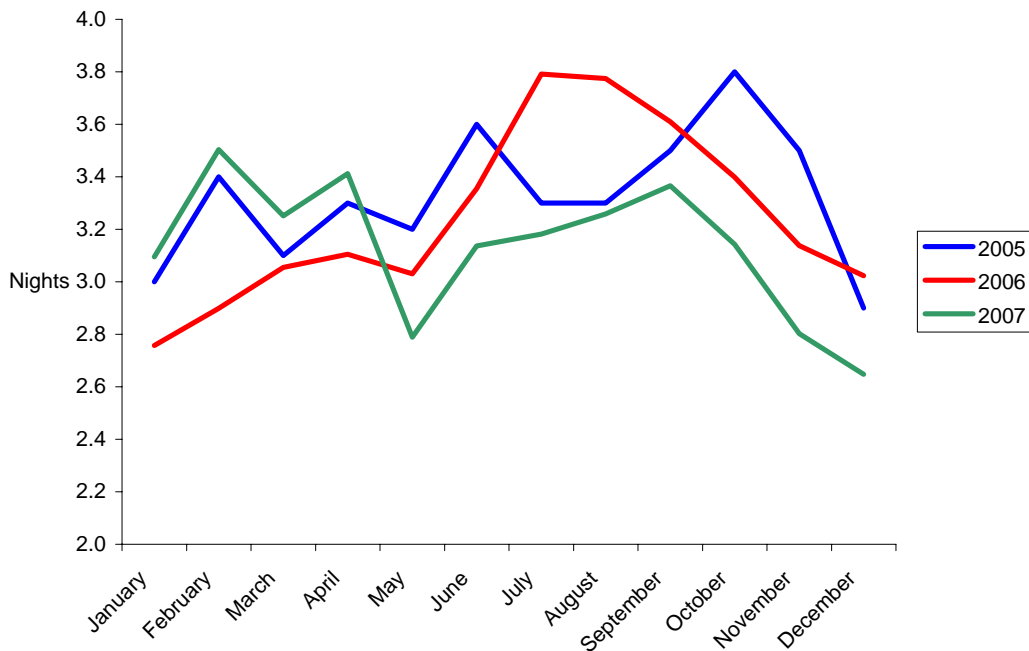


Table 7(b): Average Length of Stay Per Person (Nights), All Hotels, 1996 - 2007

TOURIST ARRIVALS

<u>YEAR</u>	<u>JAN</u>	<u>FEB</u>	<u>MAR</u>	<u>APR</u>	<u>MAY</u>	<u>JUN</u>	<u>JUL</u>	<u>AUG</u>	<u>SEP</u>	<u>OCT</u>	<u>NOV</u>	<u>DEC</u>	<u>TOTAL</u>
1996	2.7	2.8	3.2	3.2	3.8	3.6	3.3	3.3	3.5	3.1	2.9	2.6	3.2
1997	3.2	3.3	3.5	3.4	3.4	3.3	3.2	3.2	3.5	3.1	3.2	3.0	3.3
1998	2.8	3.1	3.4	3.2	3.4	3.5	3.5	3.5	3.9	3.5	3.3	3.0	3.4
1999	3.0	3.4	3.5	3.4	3.5	3.6	3.6	3.6	3.9	3.6	3.8	3.2	3.5
2000	2.6	3.0	2.9	3.1	3.5	3.1	3.5	3.3	3.3	2.7	2.8	2.7	3.1
2001	2.6	3.2	3.0	2.9	3.1	3.5	3.1	3.0	3.4	3.3	2.6	2.6	3.1
2002	2.8	2.7	3.0	3.1	3.0	3.4	3.0	3.1	3.2	3.2	2.7	2.7	3.0
2003	2.8	2.9	3.0	2.9	3.0	3.2	3.1	3.1	3.5	3.2	2.8	2.4	3.0
2004	2.5	2.6	3.0	3.0	2.8	3.0	3.8	3.8	3.7	3.7	3.3	3.4	3.2
2005	3.2	3.6	3.4	3.7	3.4	3.8	3.6	3.3	3.8	4.0	3.8	3.0	3.6
2006	3.0	3.1	2.9	3.0	2.8	3.2	3.8	3.9	3.7	3.4	3.0	3.0	3.2
2007	2.9	3.2	2.9	3.2	3.0	2.9	2.7	2.8	3.1	2.9	2.4	2.6	2.9

AVERAGE LENGTH OF STAY, TOURIST ARRIVALS, 2005 - 2007

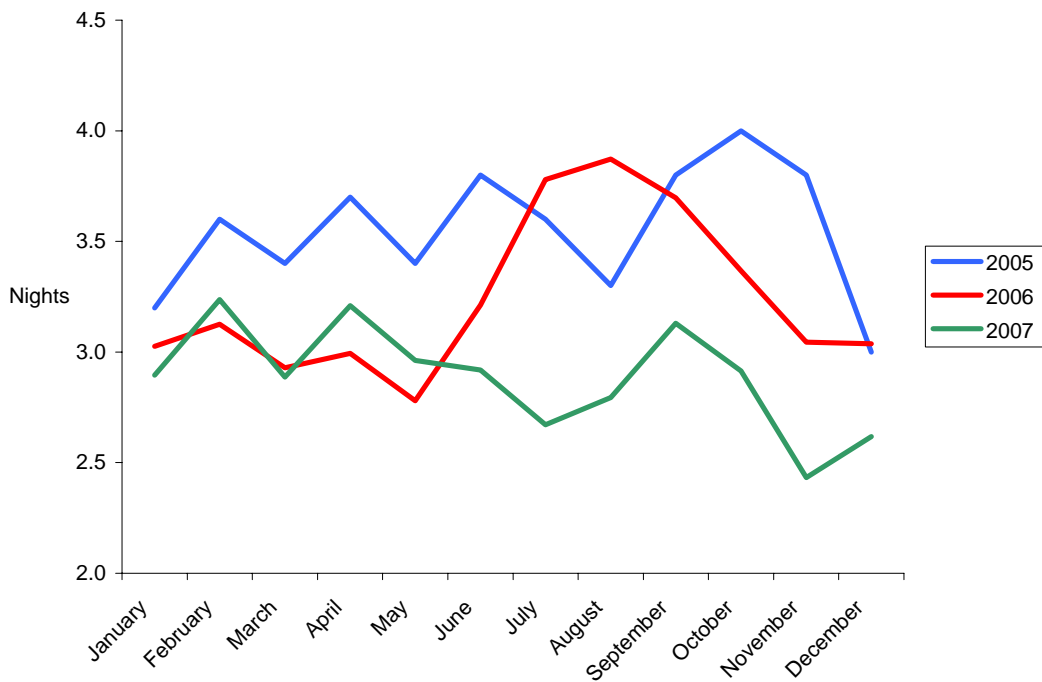


Table 8: Summary of Hotel Statistics, 1981 - 2007

<u>YEAR</u>	<u>ARRIVALS AT HOTELS</u>	<u>GUEST NIGHTS SOLD</u>	<u>% SLEEPER OCCUPANCY</u>	<u>AV. LENGTH OF STAY (NIGHTS)</u>
1981	33,417	187,679	36.2	5.6
1982	34,896	223,429	42.2	6.4
1983	33,142	209,930	38.4	6.3
1984	35,690	225,873	41.3	6.3
1985	55,119	281,525	51.0	5.1
1986	56,525	266,223	51.3	4.6
1987	64,349	279,377	52.3	4.3
1988	64,942	286,295	52.0	4.4
1989	67,934	220,083	44.0	3.2
1990	64,793	196,516	40.8	3.0
1991	43,193	178,053	35.5	4.1
1992	40,986	156,947	31.6	3.8
1993	39,123	157,215	40.2	4.0
1994	37,851	149,292	37.2	3.9
1995	45,056	144,453	39.2	3.2
1996	46,142	140,596	37.8	3.1
1997	48,420	143,972	39.0	3.0
1998	41,616	144,538	43.1	3.5
1999	42,031	153,583	43.7	3.7
2000	48,949	164,232	44.6	3.4
2001	53,776	178,951	48.9	3.3
2002	59,417	182,444	49.7	3.1
2003	61,743	187,631	51.2	3.0
2004	61,710	201,706	55.1	3.3
2005	58,796	195,827	56.2	3.3
2006	59,194	192,331	47.3	3.2
2007	63,691	199,529	45.9	3.1

ALL ARRIVALS AT HOTELS, 1981 - 2007

