

GOVERNMENT OF GIBRALTAR

HOTEL OCCUPANCY
SURVEY
2004

STATISTICS OFFICE

PREFACE

The Statistics (Hotel Occupancy) Order 1971 requires that the Government Statistician prepares a report and summary of the findings of the Hotel Occupancy Survey to be laid before the House of Assembly.

This is the twenty-ninth such report and it contains a summary of the statistics collected for the years 1978 – 2004.

I must express my thanks to the hotels for their continued co-operation in the conduct of this survey.

GOVERNMENT STATISTICIAN

MARCH 2005

- C O N T E N T S -

		<u>PAGE</u>
A.	Definitions and Notes	
B.	Tables	1 - 45
Table 1	General Analysis, all hotels 1978 - 2004	1
Chart	All Arrivals at Hotels, 1978 - 2004	2
Chart	% Room Occupancy, All Arrivals, 1992 - 2004	3
Chart	Average Length of Stay, All Arrivals, 1978 - 2004	4
Table 2(a)	Room Nights Sold and Offered, all hotels 1998 - 2002 (All Arrivals)	5
Table 2(b)	Room Nights Sold and Offered, all hotels 2003 - 2004 (All Arrivals)	6
Chart	Room Nights Sold, All Arrivals, 2001 - 2004	7
Table 2 (c)	Room Nights Sold and Offered, all hotels 1998 - 2002 (Tourist Arrivals)	8
Table 2 (d)	Room Nights Sold and Offered, all hotels 2003 - 2004 (Tourist Arrivals)	9
Chart	Room Nights Sold, Tourist Arrivals, 2001 - 2004	10
Table 3(a)	Room Occupancy Rates, 1994 - 1998	11
Table 3(b)	Room Occupancy Rates, 1999 - 2004	12
Chart	Room Occupancy Rates, All Arrivals, 2001 - 2004	13
Chart	Room Occupancy Rates, Tourist Arrivals, 2001 - 2004	14
Table 4(a)	Number of Arrivals by Month, all hotels 1978 - 1984	15
Table 4(b)	Number of Arrivals by Month, all hotels 1985 - 1991	16
Table 4(c)	Number of Arrivals by Month, all hotels 1992 - 1998	17
Table 4(d)	Number of Arrivals by Month, all hotels 1999 - 2004	18
Chart	All Arrivals at Hotels, 1999 - 2004	19
Table 5(a)	Guest Nights Sold/Offered, % Sleeper Occupancy, all hotels 1978 - 1981 (All Arrivals)	20
Table 5(b)	Guest Nights Sold/Offered, % Sleeper Occupancy, all hotels 1982 - 1985 (All Arrivals)	21
Table 5(c)	Guest Nights Sold/Offered, % Sleeper Occupancy, all hotels 1986 - 1989 (All Arrivals)	22
Table 5(d)	Guest Nights Sold/Offered, % Sleeper Occupancy, all hotels 1990 - 1993 (All Arrivals)	23
Table 5(e)	Guest Nights Sold/Offered, % Sleeper Occupancy, all hotels 1994 - 1997 (All Arrivals)	24
Table 5(f)	Guest Nights Sold/Offered, % Sleeper Occupancy, all hotels 1998 - 2001 (All Arrivals)	25

		<u>PAGE</u>
Table 5(g)	Guest Nights Sold/Offered, % Sleeper Occupancy, all hotels 2002 - 2004 (All Arrivals)	26
Chart	Guest Nights Sold, All Arrivals, 2002 - 2004	27
Chart	Guest Nights Offered, All Arrivals, 2002 - 2004	28
Chart	% Sleeper Occupancy, All Arrivals, 2002 - 2004	29
Table 6(a)	Guest Nights Sold/Offered, % Sleeper Occupancy, all hotels 1978 - 1981 (Tourist Arrivals)	30
Table 6(b)	Guest Nights Sold/Offered, % Sleeper Occupancy, all hotels 1982 - 1985 (Tourist Arrivals)	31
Table 6(c)	Guest Nights Sold/Offered, % Sleeper Occupancy, all hotels 1986 - 1989 (Tourist Arrivals)	32
Table 6(d)	Guest Nights Sold/Offered, % Sleeper Occupancy, all hotels 1990 - 1993 (Tourist Arrivals)	33
Table 6(e)	Guest Nights Sold/Offered, % Sleeper Occupancy, all hotels 1994 - 1997 (Tourist Arrivals)	34
Table 6(f)	Guest Nights Sold/Offered, % Sleeper Occupancy, all hotels 1998 - 2001 (Tourist Arrivals)	35
Table 6(g)	Guest Nights Sold/Offered, % Sleeper Occupancy, all hotels 2002 - 2004 (Tourist Arrivals)	36
Chart	Guest Nights Sold, Tourist Arrivals, 2002 - 2004	37
Chart	% Sleeper Occupancy, Tourist Arrivals, 2002 - 2004	38
Table 7(a)	Average Length of Stay per person (nights), all hotels 1978 - 2004 (All Arrivals)	39
Chart	Average Length of Stay, All Arrivals, 2002 - 2004	40
Table 7(b)	Average Length of Stay per person (nights), all hotels 1978 - 2004 (Tourist Arrivals)	41
Chart	Average Length of Stay, Tourist Arrivals, 2002 - 2004	42
Table 8	Summary Of Hotel Statistics, 1971 - 2004	43
Chart	Arrivals at Hotels, 1991 - 2004	44
Chart	Average Length of Stay, 1991 - 2004	45

A. Definitions and Notes

- (a) Tourist: A tourist is a person who is primarily in Gibraltar for the purpose of a holiday. It is nevertheless up to the discretion of the individual hotels who to include under this category.
- (b) Guest Nights: Calculated on the basis of "one guest x one night".
- (c) Sleeper Occupancy: Calculated as the percentage of guest-nights sold over guest-nights offered. It should be noted that this measure does not necessarily give an accurate indication of the ability of the hotel to accept more guests. e.g. one person staying in a room with two beds gives a 50% sleeper occupancy and a 100% room occupancy.
- (d) In interpreting the figures it should be noted that:
- The Continental Hotel is included as from January 1986.
 - The Sunrise Motel is included for the period January 1992 to December 1994.
 - As from September 1992, the Montarik Hotel is not included.
 - As from November 1992, the Gibraltar Beach Hotel is not included.
 - The Cannon Hotel is included with effect from July 1995.
- (e) Abbreviations: GNS - Guest Nights Sold, GNO - Guest Nights Offered.

B. Tables

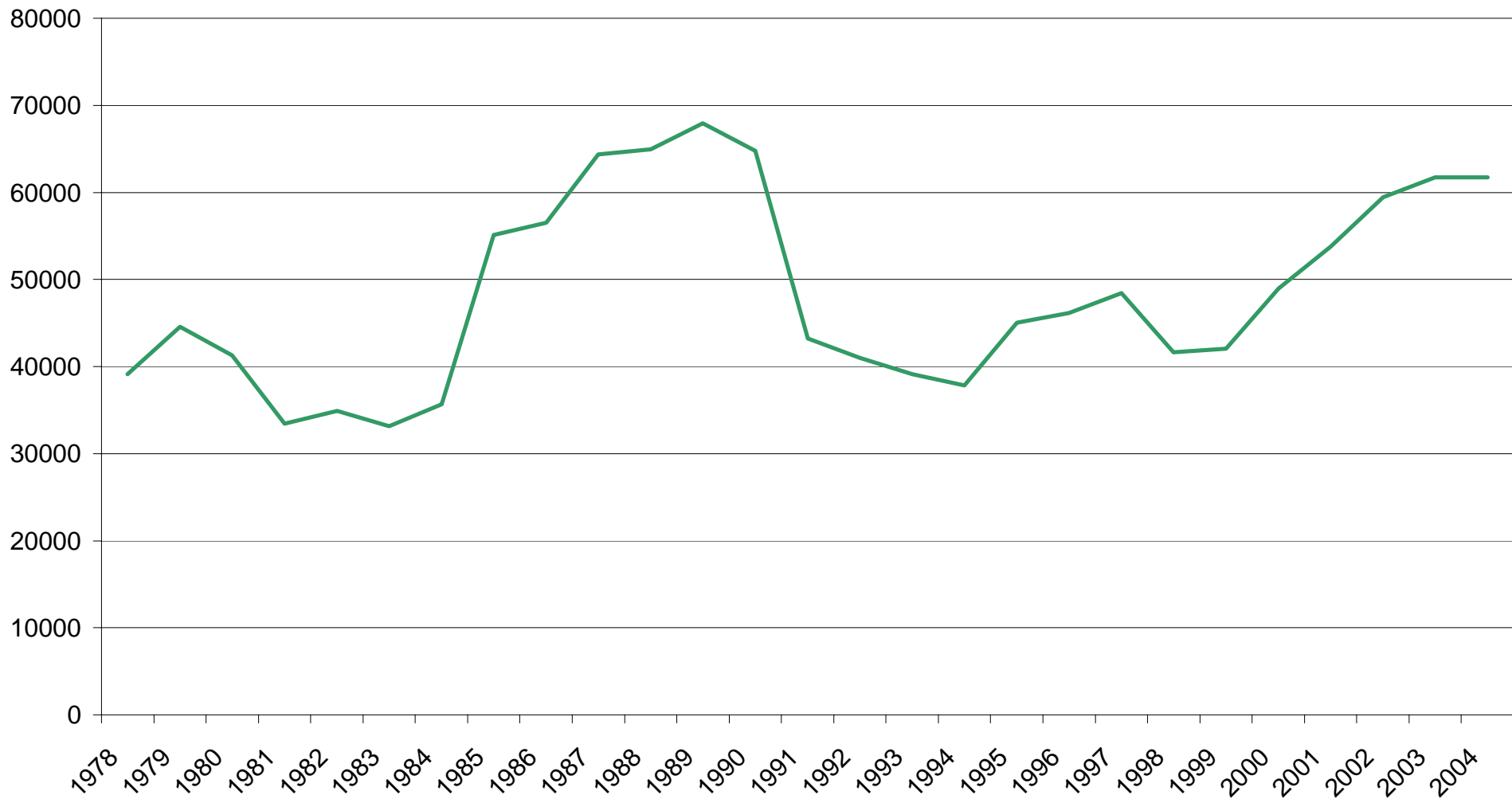
Table 1: General Analysis, all hotels 1978 - 2004

<u>YEAR</u>	<u>TOTAL ARRIVALS</u>	<u>(00's)</u>		<u>(000's)</u>		<u>AVERAGE LENGTH OF STAY</u>		
		<u>RNO</u>	<u>RNS</u>	<u>% ROOM OCCUPANCY</u>	<u>% SLEEPER OCCUPANCY</u>			
1978	39,102	n/a	n/a	n/a	539	257	47.8	6.6
1979	44,569	n/a	n/a	n/a	559	296	53.0	6.6
1980	41,308	n/a	n/a	n/a	551	256	46.5	6.2
1981	33,417	n/a	n/a	n/a	519	188	36.2	5.6
1982	34,896	n/a	n/a	n/a	529	223	42.2	6.4
1983	33,142	n/a	n/a	n/a	546	210	38.4	6.3
1984	35,690	n/a	n/a	n/a	546	226	41.3	6.3
1985	55,119	n/a	n/a	n/a	552	282	51.0	5.1
1986	56,525	n/a	n/a	n/a	519	266	51.3	4.6
1987	64,349	n/a	n/a	n/a	535	278	52.3	4.3
1988	64,942	n/a	n/a	61.3	551	286	52.0	4.4
1989	67,934	n/a	n/a	53.3	501	220	44.0	3.2
1990	64,793	n/a	n/a	51.3	481	197	40.8	3.0
1991	43,193	n/a	n/a	50.6	502	178	35.5	4.1
1992	40,986	2,367	976	41.2	497	157	31.6	3.8
1993	39,123	1,946	941	48.4	391	157	40.2	4.0
1994	37,851	1,986	885	44.5	401	149	37.2	3.9
1995	45,056	1,919	884	46.1	369	144	39.2	3.2
1996	46,142	1,908	826	43.3	372	141	37.8	3.1
1997	48,420	1,904	900	47.3	370	144	39.0	3.0
1998	41,616	1,733	930	53.6	335	145	43.1	3.5
1999	42,031	1,792	991	55.3	351	154	43.7	3.7
2000	48,949	1,790	1,054	58.9	368	164	44.6	3.4
2001	53,776	1,789	1,149	64.2	366	179	48.9	3.3
2002	59,417	1,825	1,176	64.4	367	182	49.7	3.1
2003	61,743	1,855	1,192	64.2	367	188	51.2	3.0
2004	61,710	1,855	1,264	68.2	366	202	55.1	3.3

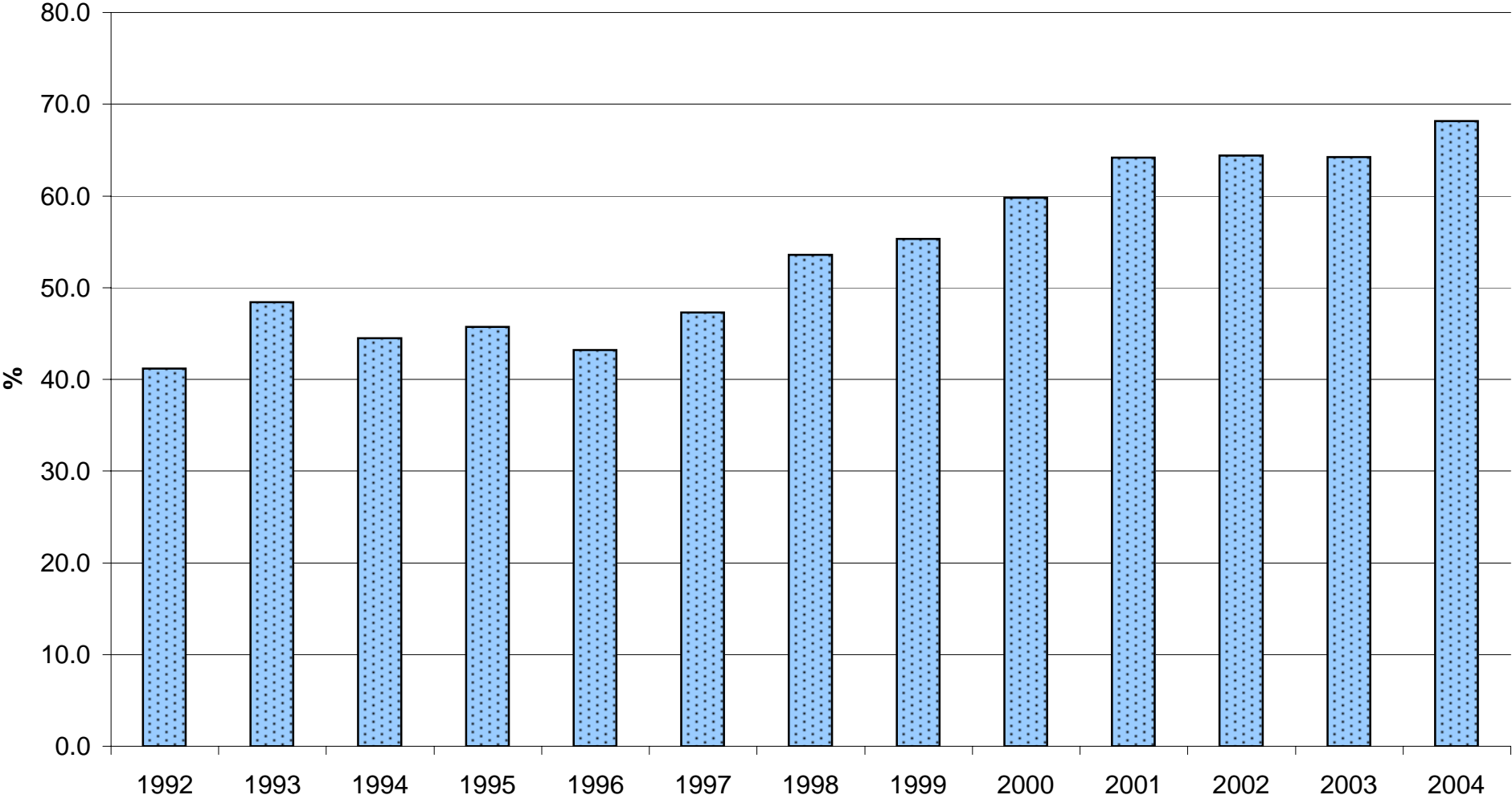
Notes:

1. RNO - Room Nights Offered.
2. RNS - Room Nights Sold.
3. GNO - Guest Nights Offered.
4. GNS - Guest Nights Sold.
5. With effect from January 1992, hotels were required under the legislation to submit returns which included the % room occupancy figures. For the period 1988 to 1991, these figures were provided voluntarily by the hotels.

ALL ARRIVALS AT HOTELS, 1978 - 2004



% ROOM OCCUPANCY, ALL ARRIVALS, 1992 - 2004



AVERAGE LENGTH OF STAY, ALL ARRIVALS, 1978 - 2004

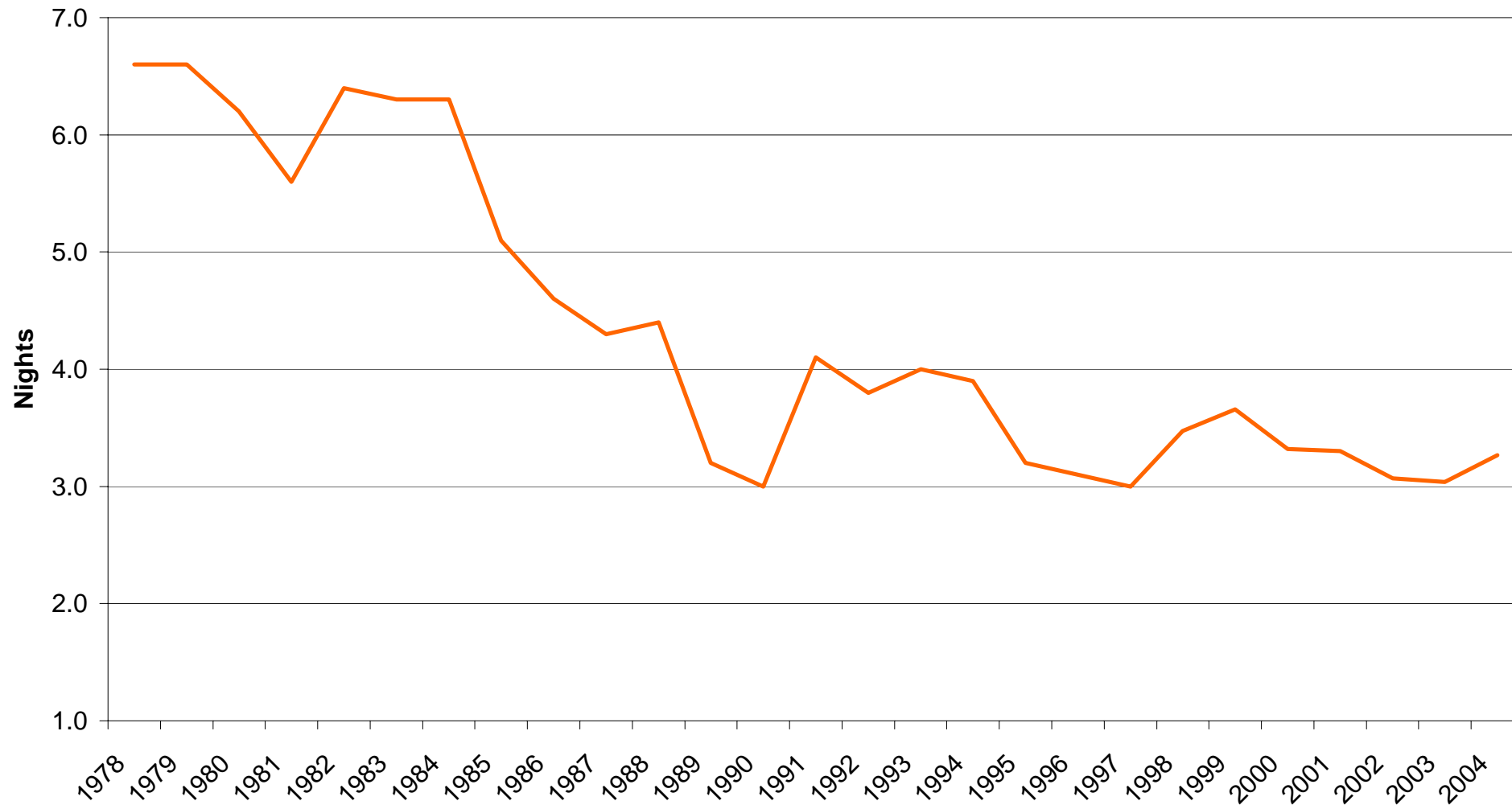


Table 2(a): Room Nights Sold and Offered, all hotels 1998 -2002

<u>MONTH</u>	<u>(00's)</u>					<u>(00's)</u>				
	<u>ROOM NIGHTS SOLD</u>					<u>ROOM NIGHTS OFFERED</u>				
	<u>1998</u>	<u>1999</u>	<u>2000</u>	<u>2001</u>	<u>2002</u>	<u>1998</u>	<u>1999</u>	<u>2000</u>	<u>2001</u>	<u>2002</u>
JANUARY	52	59	46	67	64	150	152	150	151	152
FEBRUARY	58	60	59	76	78	130	137	141	137	138
MARCH	72	89	78	102	95	150	152	151	151	152
APRIL	69	84	86	97	91	134	148	147	147	148
MAY	87	83	125	108	102	141	152	152	151	151
JUNE	82	89	106	111	106	140	149	148	147	148
JULY	80	83	96	101	112	144	152	151	151	157
AUGUST	94	99	94	100	106	144	152	151	151	158
SEPTEMBER	103	103	119	120	128	148	148	148	148	153
OCTOBER	90	98	98	112	115	152	151	151	152	158
NOVEMBER	82	91	78	87	102	148	147	147	148	153
DECEMBER	61	53	68	68	76	152	151	151	152	158
TOTAL	930	991	1,054	1,149	1,176	1,733	1,792	1,790	1,789	1,825

Note: Yearly totals have been rounded off and need not necessarily equal the sum of the rounded-off monthly figures.

Table 2(b): Room Nights Sold and Offered, all hotels 2003 - 2004

<u>ALL ARRIVALS</u>				
<u>MONTH</u>	<u>(00's)</u>		<u>(00's)</u>	
	<u>ROOM NIGHTS</u>		<u>ROOM NIGHTS</u>	
	<u>SOLD</u>	<u>SOLD</u>	<u>OFFERED</u>	<u>OFFERED</u>
	<u>2003</u>	<u>2004</u>	<u>2003</u>	<u>2004</u>
JANUARY	74	72	158	147
FEBRUARY	84	85	142	146
MARCH	105	113	158	158
APRIL	102	94	153	153
MAY	108	110	158	158
JUNE	117	116	153	153
JULY	104	116	158	159
AUGUST	100	119	157	159
SEPTEMBER	121	134	152	153
OCTOBER	112	117	157	158
NOVEMBER	97	106	152	153
DECEMBER	68	83	157	158
TOTAL	1,192	1,264	1,855	1,855

Note:

Yearly totals have been rounded off and need not necessarily equal the sum of the rounded-off monthly figures.

ROOM NIGHTS SOLD, ALL ARRIVALS, 2001 - 2004

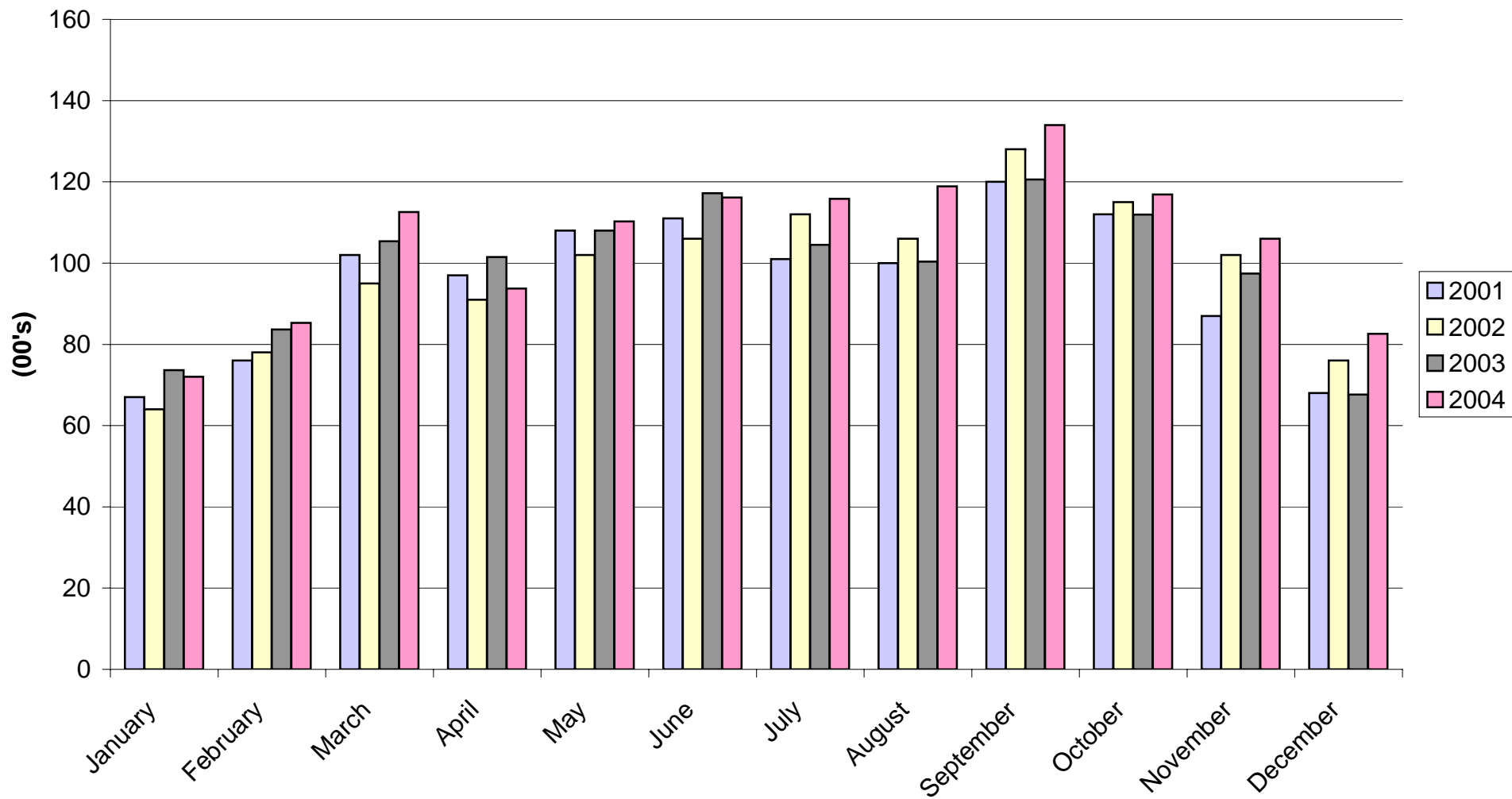


Table 2(c): Room Nights Sold and Offered, all hotels 1998 -2002

<u>MONTH</u>	<u>TOURIST ARRIVALS</u>									
	<u>(00's)</u>					<u>(00's)</u>				
	<u>ROOM NIGHTS SOLD</u>					<u>ROOM NIGHTS OFFERED</u>				
	<u>1998</u>	<u>1999</u>	<u>2000</u>	<u>2001</u>	<u>2002</u>	<u>1998</u>	<u>1999</u>	<u>2000</u>	<u>2001</u>	<u>2002</u>
JANUARY	35	33	30	40	39	150	152	150	151	152
FEBRUARY	38	37	35	46	48	130	137	141	137	138
MARCH	54	52	50	60	66	150	152	151	151	152
APRIL	45	49	56	53	61	134	148	147	147	148
MAY	57	52	77	64	69	141	152	152	151	151
JUNE	53	55	66	71	60	140	149	148	147	148
JULY	50	50	60	67	74	144	152	151	151	157
AUGUST	61	61	65	68	71	144	152	151	151	158
SEPTEMBER	70	65	80	82	87	148	148	148	148	153
OCTOBER	60	63	66	74	71	152	151	151	152	158
NOVEMBER	48	52	50	55	56	148	147	147	148	153
DECEMBER	35	34	41	41	45	152	151	151	152	158
TOTAL	605	602	675	721	747	1,733	1,792	1,790	1,789	1,825

Note: Yearly totals have been rounded off and need not necessarily equal the sum of the rounded-off monthly figures.

Table 2(d): Room Nights Sold and Offered, all hotels 2003 - 2004

TOURIST ARRIVALS

<u>MONTH</u>	<u>(00's)</u>		<u>(00's)</u>	
	<u>ROOM NIGHTS</u>		<u>ROOM NIGHTS</u>	
	<u>2003</u>	<u>2004</u>	<u>2003</u>	<u>2004</u>
JANUARY	43	42	158	147
FEBRUARY	45	53	142	146
MARCH	65	69	158	158
APRIL	58	61	153	153
MAY	64	73	158	158
JUNE	70	70	153	153
JULY	64	74	158	159
AUGUST	67	77	157	159
SEPTEMBER	82	92	152	153
OCTOBER	74	80	157	158
NOVEMBER	61	68	152	153
DECEMBER	39	53	157	158
TOTAL	731	812	1,855	1,855

Note:

Yearly totals have been rounded off and need not necessarily equal the sum of the rounded-off monthly figures.

ROOM NIGHTS SOLD, TOURIST ARRIVALS, 2001 - 2004

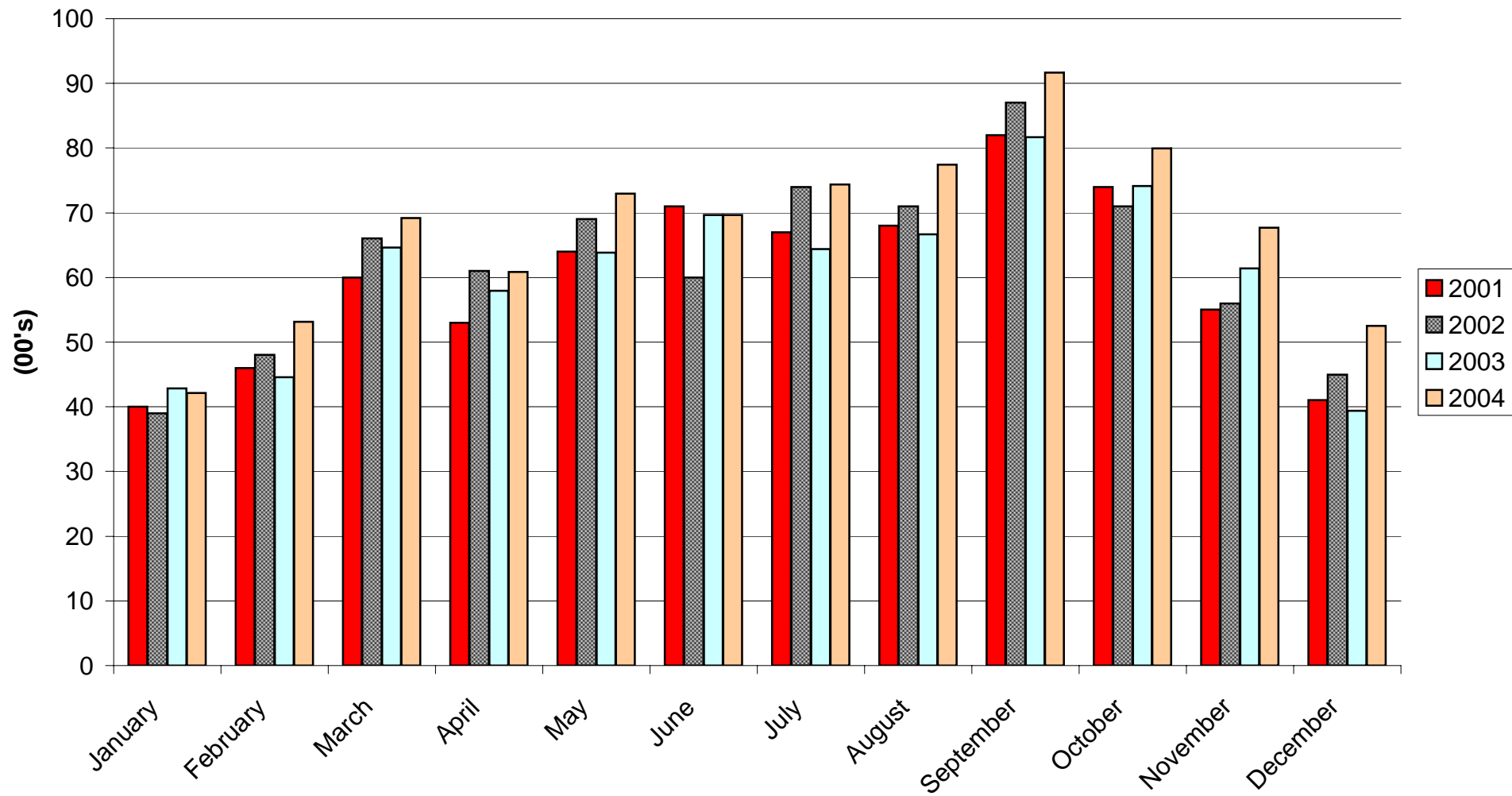


Table 3(a): Room Occupancy Rates, 1994 -1998

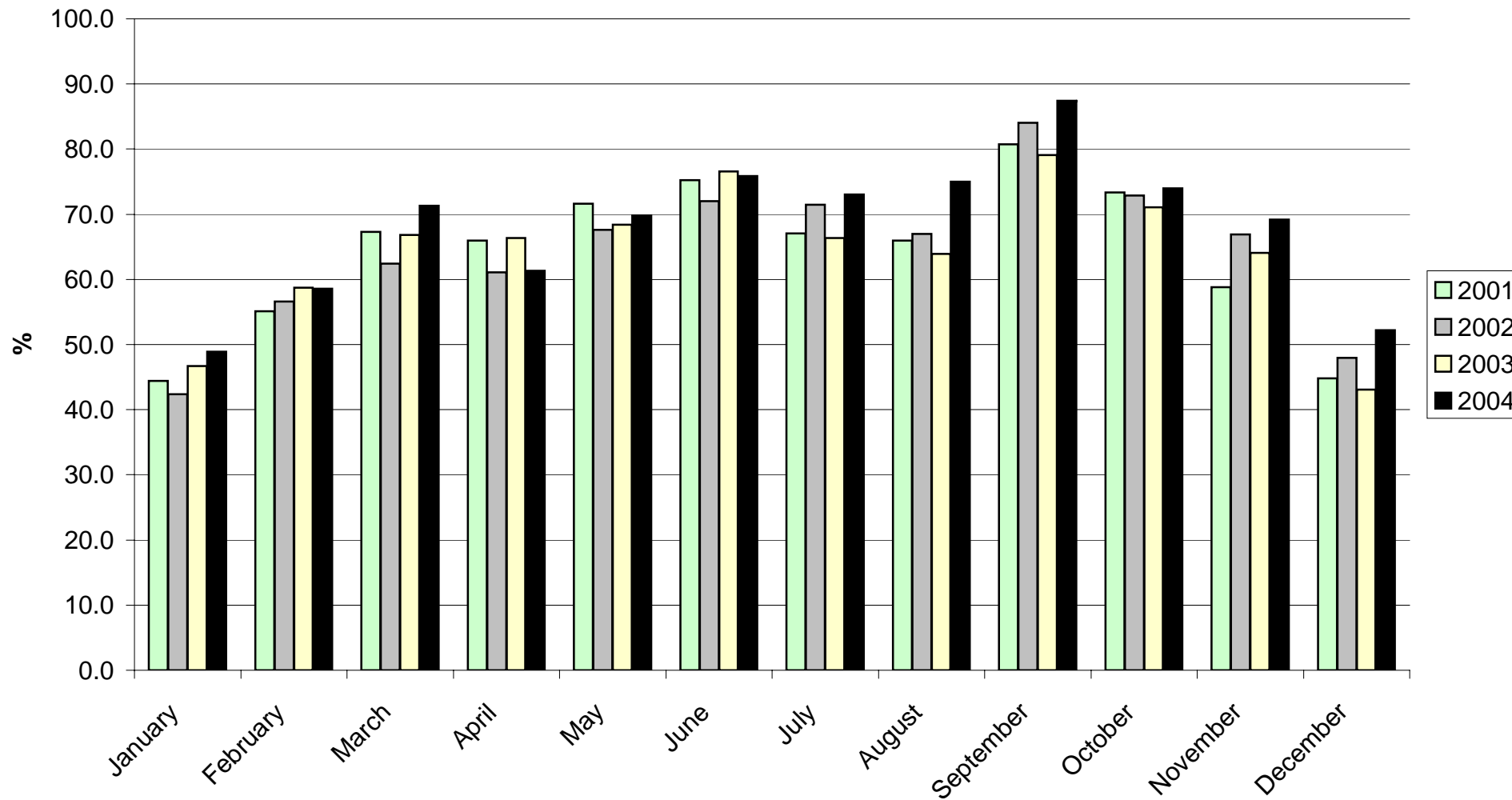
<u>MONTH</u>	<u>ALL ARRIVALS</u>					<u>TOURIST ARRIVALS</u>				
	<u>1994</u>	<u>1995</u>	<u>1996</u>	<u>1997</u>	<u>1998</u>	<u>1994</u>	<u>1995</u>	<u>1996</u>	<u>1997</u>	<u>1998</u>
JANUARY	37.5	23.1	30.4	28.6	34.8	23.6	16.2	16.3	14.8	23.1
FEBRUARY	39.0	39.7	34.2	39.9	44.7	23.6	26.2	21.8	23.4	29.4
MARCH	45.5	42.1	42.6	41.7	48.3	27.3	30.8	26.9	26.3	36.0
APRIL	43.5	52.7	44.2	43.3	51.4	26.8	38.8	30.1	25.1	33.5
MAY	49.7	50.3	49.3	51.5	61.6	28.4	35.4	31.7	31.5	40.4
JUNE	48.9	54.2	51.8	52.2	58.9	31.6	41.2	32.6	30.0	37.7
JULY	51.4	56.0	41.0	48.3	55.7	31.9	38.1	27.4	27.0	34.6
AUGUST	42.5	51.4	44.5	54.3	65.1	28.0	37.3	29.7	30.2	42.4
SEPTEMBER	57.6	64.4	59.0	62.5	69.4	38.8	51.0	34.3	35.0	47.0
OCTOBER	50.4	48.5	49.4	56.1	59.3	32.2	38.7	30.2	28.2	39.5
NOVEMBER	36.5	35.2	37.0	50.7	55.1	24.7	27.0	22.5	25.4	32.2
DECEMBER	31.5	31.7	36.2	38.9	39.7	22.7	24.5	20.4	19.7	23.1
TOTAL	44.5	46.1	43.3	47.3	53.6	28.3	33.8	27.0	26.3	34.9

Note: The yearly totals for 1995 and 1996 have been adjusted as a result of a program malfunction in the cumulative totals for those years.

Table 3(b): Room Occupancy Rates, 1999 - 2004

<u>MONTH</u>	<u>ALL ARRIVALS</u>						<u>TOURIST ARRIVALS</u>					
	<u>1999</u>	<u>2000</u>	<u>2001</u>	<u>2002</u>	<u>2003</u>	<u>2004</u>	<u>1999</u>	<u>2000</u>	<u>2001</u>	<u>2002</u>	<u>2003</u>	<u>2004</u>
JANUARY	38.7	30.6	44.4	42.3	46.7	48.9	21.9	19.6	26.1	25.4	27.2	28.6
FEBRUARY	43.9	41.6	55.1	56.6	58.7	58.6	26.9	24.8	33.7	35.1	31.3	36.5
MARCH	58.4	51.7	67.3	62.4	66.8	71.3	34.0	33.1	39.4	43.3	40.9	43.8
APRIL	56.5	58.6	66.0	61.1	66.4	61.3	32.9	38.3	35.8	41.2	37.9	39.8
MAY	54.5	82.2	71.6	67.6	68.4	69.8	34.4	50.9	42.6	45.5	40.5	46.1
JUNE	59.7	72.2	75.3	72.0	76.6	75.9	37.1	44.4	48.2	40.8	45.5	45.5
JULY	54.6	63.6	67.0	71.4	66.3	73.0	32.6	39.6	44.5	47.1	40.9	46.9
AUGUST	65.4	61.9	66.0	67.0	63.9	75.0	40.2	42.9	44.7	44.8	42.5	48.8
SEPTEMBER	69.9	80.5	80.7	84.0	79.1	87.4	43.9	54.2	55.2	56.8	53.6	59.8
OCTOBER	64.9	64.8	73.3	72.9	71.1	73.9	41.6	43.4	48.9	44.9	47.1	50.6
NOVEMBER	62.0	52.9	58.8	66.9	64.1	69.2	35.0	33.7	37.2	36.6	40.3	44.2
DECEMBER	35.1	45.0	44.8	47.9	43.1	52.2	22.4	26.8	27.3	28.8	25.1	33.2
TOTAL	55.3	58.9	64.2	64.4	64.2	68.2	33.6	37.7	40.3	40.9	39.4	43.7

ROOM OCCUPANCY RATES, ALL ARRIVALS, 2001 - 2004



ROOM OCCUPANCY RATES, TOURIST ARRIVALS, 2001 - 2004

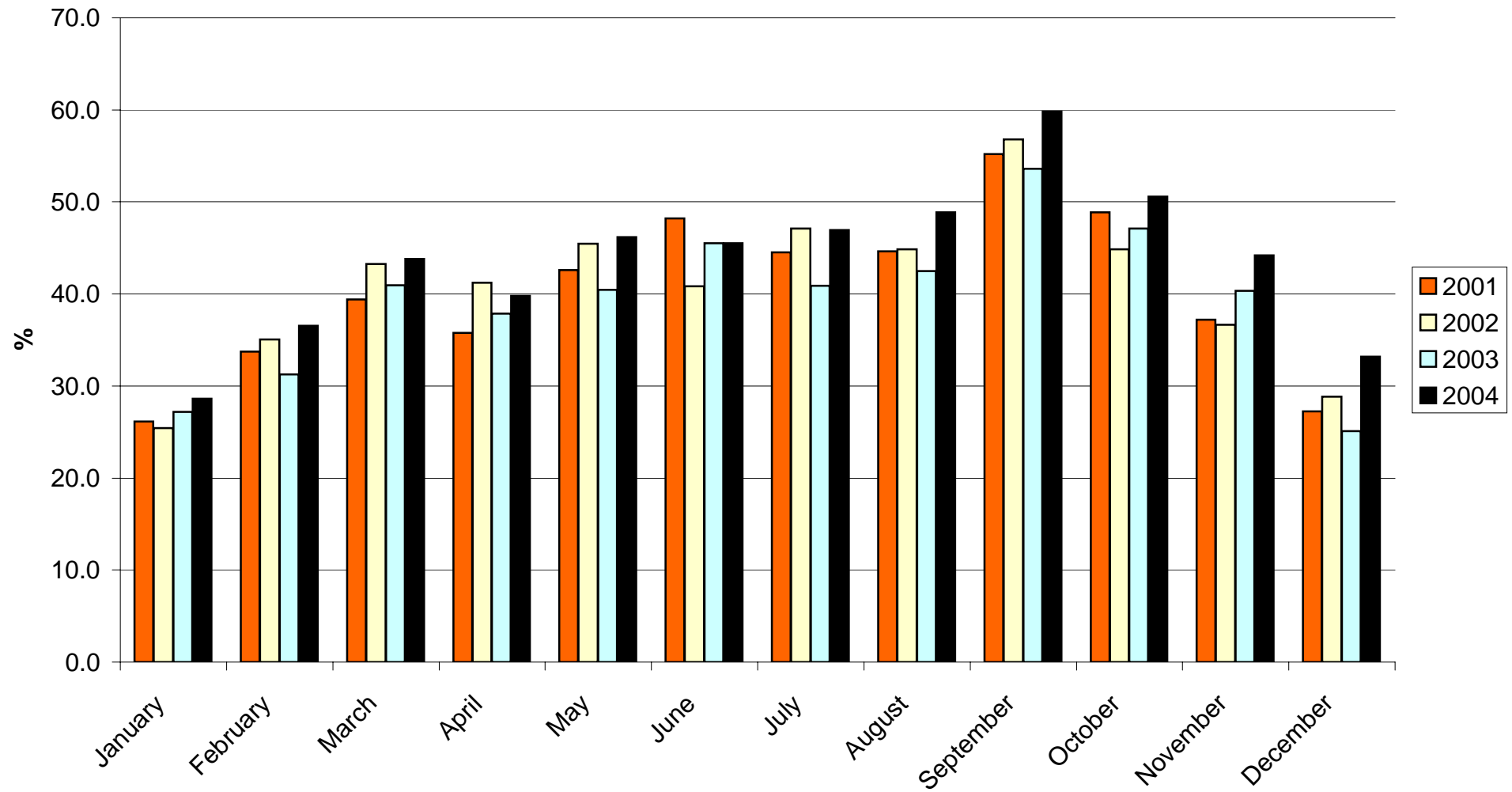


Table 4(a): Number of Arrivals by Month, all hotels 1978 -1984

<u>MONTH</u>	<u>(00's)</u>							<u>(00's)</u>						
	<u>ALL ARRIVALS</u>							<u>TOURIST ARRIVALS</u>						
	<u>1978</u>	<u>1979</u>	<u>1980</u>	<u>1981</u>	<u>1982</u>	<u>1983</u>	<u>1984</u>	<u>1978</u>	<u>1979</u>	<u>1980</u>	<u>1981</u>	<u>1982</u>	<u>1983</u>	<u>1984</u>
JANUARY	18	21	27	20	16	16	18	13	16	23	16	11	11	11
FEBRUARY	24	38	31	26	25	23	25	19	23	26	21	18	16	13
MARCH	31	40	37	33	37	26	26	22	27	31	26	24	18	17
APRIL	32	28	35	29	34	30	29	25	23	29	24	23	19	16
MAY	36	39	43	29	33	34	38	29	34	32	23	26	21	20
JUNE	41	41	44	28	32	27	28	35	34	27	23	23	20	21
JULY	35	45	34	31	29	31	33	29	39	29	21	23	20	21
AUGUST	38	46	39	32	34	32	34	30	37	34	23	22	21	23
SEPTEMBER	39	47	38	33	33	36	35	33	39	34	25	23	25	26
OCTOBER	40	46	37	31	31	30	40	33	38	31	25	20	19	27
NOVEMBER	35	32	26	23	23	25	30	27	26	20	18	17	16	20
DECEMBER	23	23	22	20	22	21	21	17	18	15	16	15	14	12
TOTAL	392	446	413	334	349	331	357	312	354	331	261	245	220	227

Note: Yearly totals have been rounded off and need not necessarily equal the sum of the rounded-off monthly figures.

Table 4(b): Number of Arrivals by Month, all hotels 1985 -1991

<u>MONTH</u>	<u>(00's)</u>							<u>(00's)</u>						
	<u>ALL ARRIVALS</u>							<u>TOURIST ARRIVALS</u>						
	<u>1985</u>	<u>1986</u>	<u>1987</u>	<u>1988</u>	<u>1989</u>	<u>1990</u>	<u>1991</u>	<u>1985</u>	<u>1986</u>	<u>1987</u>	<u>1988</u>	<u>1989</u>	<u>1990</u>	<u>1991</u>
JANUARY	26	31	41	46	34	34	34	10	24	37	32	24	20	19
FEBRUARY	45	40	46	47	43	41	34	27	29	35	36	35	24	19
MARCH	49	46	63	63	52	79	39	36	38	50	47	41	30	23
APRIL	46	44	62	61	53	84	36	33	36	50	48	41	34	21
MAY	46	57	58	60	46	60	42	37	40	38	46	36	28	24
JUNE	46	51	51	58	50	53	32	35	39	35	40	42	23	21
JULY	52	45	44	54	66	63	39	38	34	36	36	39	31	25
AUGUST	54	52	51	53	59	46	35	43	40	41	36	41	25	24
SEPTEMBER	54	55	62	58	74	58	43	41	44	48	38	44	31	24
OCTOBER	51	50	63	49	77	50	47	35	42	48	36	53	26	25
NOVEMBER	46	49	60	58	67	41	26	35	43	48	36	44	21	16
DECEMBER	36	46	52	42	58	39	25	24	29	34	26	35	20	17
TOTAL	551	566	653	649	679	648	432	394	438	500	457	475	313	260

Note: Yearly totals have been rounded off and need not necessarily equal the sum of the rounded-off monthly figures.

Table 4(c): Number of Arrivals by Month, all hotels 1992 -1998

<u>MONTH</u>	<u>(00's)</u>							<u>(00's)</u>						
	<u>ALL ARRIVALS</u>							<u>TOURIST ARRIVALS</u>						
	<u>1992</u>	<u>1993</u>	<u>1994</u>	<u>1995</u>	<u>1996</u>	<u>1997</u>	<u>1998</u>	<u>1992</u>	<u>1993</u>	<u>1994</u>	<u>1995</u>	<u>1996</u>	<u>1997</u>	<u>1998</u>
JANUARY	23	19	25	20	28	24	30	16	15	17	16	20	15	16
FEBRUARY	30	24	24	28	34	32	28	22	15	17	22	25	19	17
MARCH	34	29	31	34	40	33	31	27	21	21	24	27	19	21
APRIL	36	30	31	40	41	39	34	28	21	21	28	30	22	23
MAY	40	38	39	38	42	48	38	29	26	24	26	26	28	25
JUNE	41	35	33	39	41	47	35	28	24	23	27	26	27	24
JULY	38	33	34	46	38	43	34	26	22	24	33	27	28	23
AUGUST	36	33	33	44	39	55	42	29	25	23	31	30	33	30
SEPTEMBER	41	44	43	57	47	54	40	26	29	29	41	30	31	30
OCTOBER	39	45	39	41	43	39	42	27	29	27	32	31	28	29
NOVEMBER	28	35	25	31	33	38	36	20	23	17	25	22	20	24
DECEMBER	24	25	22	32	35	32	28	19	19	16	25	25	19	18
TOTAL	410	391	379	451	461	484	416	299	270	259	331	319	289	279

Note: Yearly totals have been rounded off and need not necessarily equal the sum of the rounded-off monthly figures.

Table 4(d): Number of Arrivals by Month, all hotels 1999 - 2004

<u>MONTH</u>	<u>(00's)</u> <u>ALL ARRIVALS</u>						<u>(00's)</u> <u>TOURIST ARRIVALS</u>					
	<u>1999</u>	<u>2000</u>	<u>2001</u>	<u>2002</u>	<u>2003</u>	<u>2004</u>	<u>1999</u>	<u>2000</u>	<u>2001</u>	<u>2002</u>	<u>2003</u>	<u>2004</u>
JANUARY	26	22	31	32	37	38	17	15	23	23	23	27
FEBRUARY	26	28	33	41	44	44	17	19	24	30	29	30
MARCH	36	39	45	46	54	55	23	28	32	35	36	38
APRIL	37	42	43	45	50	47	23	30	31	32	32	34
MAY	36	48	50	51	56	57	25	35	35	38	35	44
JUNE	38	48	50	43	59	55	25	36	34	30	37	38
JULY	34	40	50	58	52	53	22	29	37	40	35	39
AUGUST	43	46	53	58	59	56	28	35	41	41	41	42
SEPTEMBER	42	56	54	66	58	62	27	41	41	47	40	46
OCTOBER	43	48	51	62	56	56	30	36	38	40	39	41
NOVEMBER	37	39	43	51	54	54	23	29	34	33	35	38
DECEMBER	24	33	35	41	39	39	17	24	25	27	26	28
TOTAL	421	489	538	594	617	617	277	359	394	415	409	445

Note: Yearly totals have been rounded off and need not necessarily equal the sum of the rounded-off monthly figures.

ALL ARRIVALS AT HOTELS, 1999 - 2004

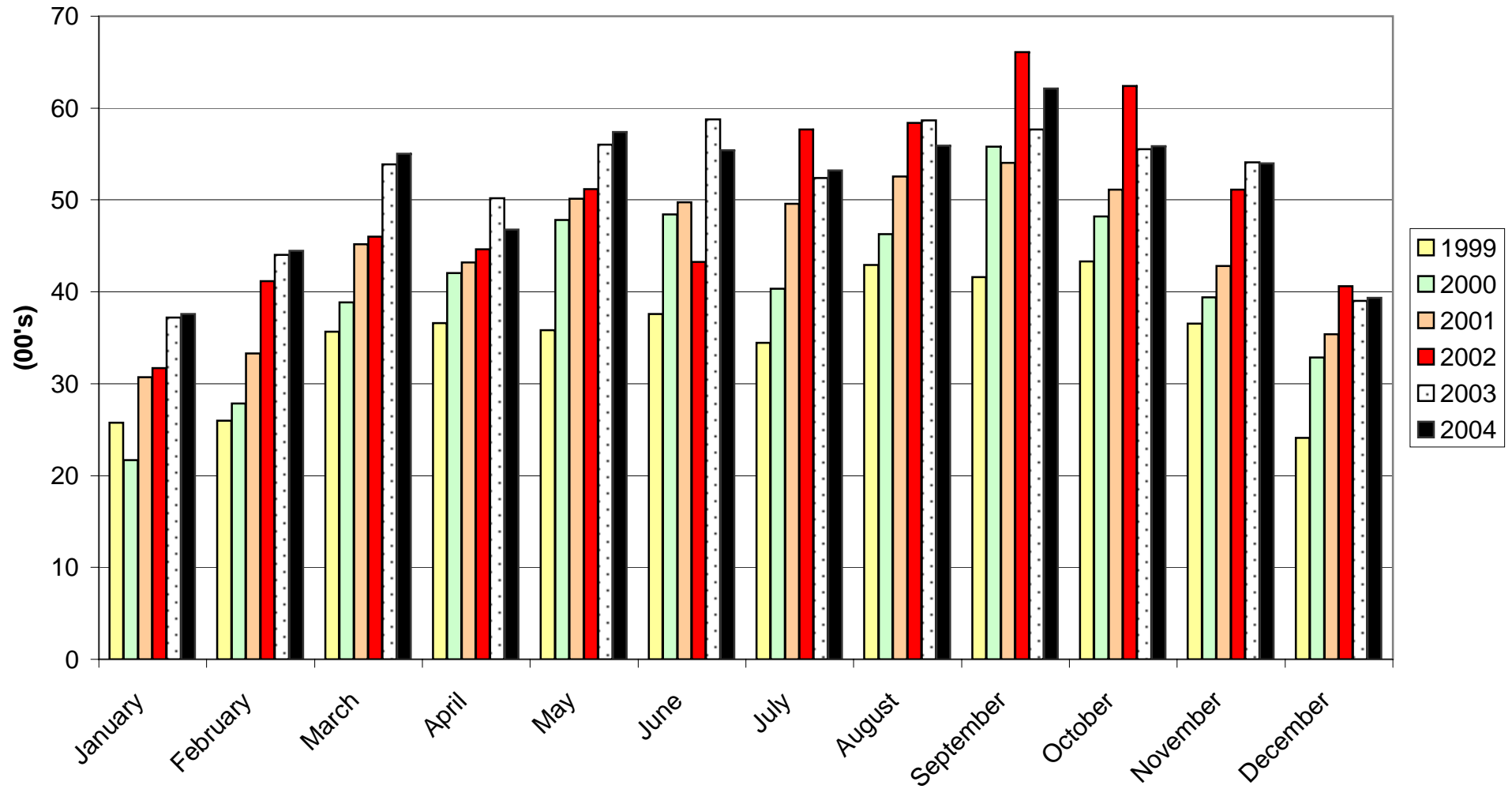


Table 5(a): Guest Nights Sold/Offered, % Sleeper Occupancy, all hotels 1978 -1981

<u>MONTH</u>	<u>ALL ARRIVALS</u>											
	<u>(000's)</u>				<u>(000's)</u>				<u>%</u>			
	<u>GUEST NIGHTS SOLD</u>				<u>GUEST NIGHTS OFFERED</u>				<u>SLEEPER OCCUPANCY</u>			
	<u>1978</u>	<u>1979</u>	<u>1980</u>	<u>1981</u>	<u>1978</u>	<u>1979</u>	<u>1980</u>	<u>1981</u>	<u>1978</u>	<u>1979</u>	<u>1980</u>	<u>1981</u>
JANUARY	9	10	12	10	45	45	45	44	19.3	23.3	26.6	23.2
FEBRUARY	12	17	14	13	40	42	42	40	30.2	40.3	32.9	31.9
MARCH	16	20	21	17	45	47	46	44	35.0	43.1	46.4	38.8
APRIL	21	17	23	18	44	46	47	44	46.4	38.0	48.5	40.3
MAY	22	24	22	16	46	47	48	44	48.4	50.9	46.9	37.1
JUNE	32	33	28	18	45	47	47	42	71.2	69.2	60.2	42.0
JULY	30	35	26	17	46	48	48	42	65.8	71.8	53.1	40.2
AUGUST	30	37	31	19	45	48	47	43	66.8	76.9	64.9	43.5
SEPTEMBER	30	39	30	19	46	47	47	43	64.3	82.2	63.0	44.1
OCTOBER	25	34	24	18	47	47	46	47	53.6	73.2	52.2	39.1
NOVEMBER	17	18	14	13	44	47	44	42	39.4	38.8	31.8	30.1
DECEMBER	13	12	11	10	45	48	44	44	29.1	24.7	26.2	23.6
TOTAL	257	296	256	188	538	559	551	519	47.8	53.0	46.5	36.2

Note: Yearly totals have been rounded off and need not necessarily equal the sum of the rounded-off monthly figures.

Table 5(b): Guest Nights Sold/Offered, % Sleeper Occupancy, all hotels 1982 -1985

<u>MONTH</u>	<u>ALL ARRIVALS</u>											
	<u>(000's)</u>				<u>(000's)</u>				<u>%</u>			
	<u>GUEST NIGHTS SOLD</u>				<u>GUEST NIGHTS OFFERED</u>				<u>SLEEPER OCCUPANCY</u>			
	<u>1982</u>	<u>1983</u>	<u>1984</u>	<u>1985</u>	<u>1982</u>	<u>1983</u>	<u>1984</u>	<u>1985</u>	<u>1982</u>	<u>1983</u>	<u>1984</u>	<u>1985</u>
JANUARY	9	9	9	11	43	45	46	45	20.2	19.0	20.7	24.3
FEBRUARY	14	11	13	18	40	41	43	41	35.2	27.7	30.0	42.7
MARCH	19	16	15	25	44	46	47	46	42.4	34.8	32.5	54.0
APRIL	22	16	18	25	44	45	45	45	50.5	35.9	39.9	56.8
MAY	23	20	23	23	45	46	46	47	50.0	43.2	50.5	50.3
JUNE	24	23	23	31	45	45	45	45	54.7	49.7	50.8	69.4
JULY	24	20	22	28	46	47	45	48	51.9	42.3	50.1	58.0
AUGUST	24	25	25	32	45	47	47	48	52.0	54.0	53.0	67.7
SEPTEMBER	22	25	27	32	43	46	44	46	51.7	54.6	61.0	68.2
OCTOBER	19	21	25	27	45	47	46	48	42.6	43.7	53.2	55.6
NOVEMBER	12	13	15	17	44	45	45	46	27.9	30.2	32.3	36.9
DECEMBER	11	11	11	13	45	46	47	47	25.6	24.4	22.9	27.3
TOTAL	223	210	226	282	529	546	546	552	42.2	38.4	41.3	51.0

Note: Yearly totals have been rounded off and need not necessarily equal the sum of the rounded-off monthly figures.

Table 5(c): Guest Nights Sold/Offered, % Sleeper Occupancy, all hotels 1986 -1989

<u>MONTH</u>	<u>ALL ARRIVALS</u>											
	<u>(000's)</u>				<u>(000's)</u>				<u>%</u>			
	<u>GUEST NIGHTS SOLD</u>				<u>GUEST NIGHTS OFFERED</u>				<u>SLEEPER OCCUPANCY</u>			
	<u>1986</u>	<u>1987</u>	<u>1988</u>	<u>1989</u>	<u>1986</u>	<u>1987</u>	<u>1988</u>	<u>1989</u>	<u>1986</u>	<u>1987</u>	<u>1988</u>	<u>1989</u>
JANUARY	13	19	16	15	43	46	46	42	30.1	42.1	35.8	35.2
FEBRUARY	15	18	19	18	38	42	44	40	39.0	43.9	42.6	46.0
MARCH	21	26	26	22	43	46	48	42	48.7	57.5	53.6	52.0
APRIL	18	24	26	23	42	43	45	42	42.0	55.6	57.1	54.8
MAY	25	25	26	19	45	45	47	44	57.2	55.7	55.1	41.9
JUNE	29	22	29	19	43	44	47	43	67.9	49.1	61.6	43.9
JULY	23	20	27	20	44	45	48	43	51.8	44.5	55.8	46.8
AUGUST	27	26	24	19	46	45	48	43	59.7	57.7	50.4	45.1
SEPTEMBER	29	29	26	19	44	45	44	42	64.8	65.6	60.4	46.0
OCTOBER	26	26	26	19	45	44	46	40	59.3	58.8	56.4	46.2
NOVEMBER	23	24	22	14	43	44	43	38	54.1	54.4	51.4	38.2
DECEMBER	17	20	19	13	44	46	45	42	38.5	42.5	42.6	31.2
TOTAL	266	279	286	220	520	535	551	501	51.3	52.3	52.0	44.0

Note: Yearly totals have been rounded off and need not necessarily equal the sum of the rounded-off monthly figures.

Table 5(d): Guest Nights Sold/Offered, % Sleeper Occupancy, all hotels 1990 -1993

<u>MONTH</u>	<u>ALL ARRIVALS</u>											
	<u>(000's)</u>				<u>(000's)</u>				<u>%</u>			
	<u>GUEST NIGHTS SOLD</u>				<u>GUEST NIGHTS OFFERED</u>				<u>SLEEPER OCCUPANCY</u>			
	<u>1990</u>	<u>1991</u>	<u>1992</u>	<u>1993</u>	<u>1990</u>	<u>1991</u>	<u>1992</u>	<u>1993</u>	<u>1990</u>	<u>1991</u>	<u>1992</u>	<u>1993</u>
JANUARY	11	12	9	7	37	40	42	33	31.2	29.4	20.6	21.5
FEBRUARY	14	13	9	9	37	37	41	30	37.3	34.5	22.8	30.1
MARCH	19	17	14	12	42	44	46	33	45.3	37.5	29.6	36.2
APRIL	23	14	14	12	41	41	42	32	55.4	34.0	32.6	38.3
MAY	21	17	15	16	42	41	43	34	50.4	40.2	35.6	45.6
JUNE	15	16	16	15	39	44	47	32	37.3	35.8	34.8	48.0
JULY	18	16	16	14	42	43	45	32	43.8	37.9	35.2	41.8
AUGUST	15	16	14	14	41	40	44	33	35.2	41.2	32.2	44.0
SEPTEMBER	18	17	16	18	41	44	41	32	44.4	39.2	39.7	56.2
OCTOBER	18	18	15	17	40	43	42	34	44.5	42.5	34.6	50.9
NOVEMBER	12	13	10	13	40	41	32	32	30.2	31.1	32.6	39.4
DECEMBER	13	10	9	10	39	45	33	33	32.4	22.4	27.0	29.6
TOTAL	197	178	157	157	481	502	497	391	40.8	35.5	31.6	40.2

Note: Yearly totals have been rounded off and need not necessarily equal the sum of the rounded-off monthly figures.

Table 5(e): Guest Nights Sold/Offered, % Sleeper Occupancy, all hotels 1994 -1997

<u>MONTH</u>	<u>ALL ARRIVALS</u>											
	<u>(000's)</u>				<u>(000's)</u>				<u>%</u>			
	<u>GUEST NIGHTS SOLD</u>				<u>GUEST NIGHTS OFFERED</u>				<u>SLEEPER OCCUPANCY</u>			
	<u>1994</u>	<u>1995</u>	<u>1996</u>	<u>1997</u>	<u>1994</u>	<u>1995</u>	<u>1996</u>	<u>1997</u>	<u>1994</u>	<u>1995</u>	<u>1996</u>	<u>1997</u>
JANUARY	10	6	8	8	34	32	32	31	29.4	19.0	24.9	24.1
FEBRUARY	9	10	9	10	30	28	30	29	31.3	34.9	29.9	34.1
MARCH	12	10	12	10	33	31	32	31	37.2	33.4	36.3	33.0
APRIL	12	13	12	11	31	25	31	31	39.2	49.5	39.1	36.3
MAY	15	13	14	14	35	31	32	32	42.5	41.4	43.0	45.0
JUNE	14	14	13	13	33	30	30	30	40.6	46.3	37.2	44.4
JULY	15	15	12	14	35	32	31	31	42.4	48.2	39.0	44.1
AUGUST	13	15	13	16	35	32	31	31	37.0	46.2	42.3	51.3
SEPTEMBER	16	18	16	16	33	31	31	31	48.9	58.0	51.9	50.7
OCTOBER	15	13	13	14	35	32	31	31	43.9	41.1	42.8	44.1
NOVEMBER	9	9	10	10	33	31	30	31	27.8	28.1	31.3	31.7
DECEMBER	9	9	9	9	34	32	31	31	25.2	26.7	29.0	28.2
TOTAL	149	144	141	144	401	369	372	370	37.2	39.2	37.8	39.0

Note: Yearly totals have been rounded off and need not necessarily equal the sum of the rounded-off monthly figures.

Table 5(f): Guest Nights Sold/Offered, % Sleeper Occupancy, all hotels 1998 -2001

<u>MONTH</u>	<u>ALL ARRIVALS</u>											
	<u>(000's)</u>				<u>(000's)</u>				<u>%</u>			
	<u>GUEST NIGHTS SOLD</u>				<u>GUEST NIGHTS OFFERED</u>				<u>SLEEPER OCCUPANCY</u>			
	<u>1998</u>	<u>1999</u>	<u>2000</u>	<u>2001</u>	<u>1998</u>	<u>1999</u>	<u>2000</u>	<u>2001</u>	<u>1998</u>	<u>1999</u>	<u>2000</u>	<u>2001</u>
JANUARY	7	8	6	8	30	29	31	31	24.8	28.8	20.0	27.0
FEBRUARY	9	9	9	11	25	26	29	28	35.4	34.2	30.4	40.0
MARCH	11	13	12	15	28	29	31	31	38.8	45.5	37.5	47.9
APRIL	11	13	14	15	26	29	30	30	42.4	44.3	45.0	48.4
MAY	12	13	19	17	27	29	31	31	45.6	43.7	60.3	55.0
JUNE	13	14	17	18	28	29	30	30	45.9	49.1	56.6	58.3
JULY	13	13	16	17	29	29	31	31	43.9	44.5	50.2	53.5
AUGUST	16	16	16	18	29	29	31	31	54.4	56.3	51.8	57.4
SEPTEMBER	17	16	19	20	28	29	31	30	59.8	56.9	61.7	64.6
OCTOBER	15	15	15	18	29	31	31	31	50.2	50.0	48.7	57.3
NOVEMBER	12	14	12	13	28	30	30	30	43.8	46.0	38.9	43.5
DECEMBER	9	8	11	11	29	31	31	31	32.2	25.6	34.1	34.1
TOTAL	145	154	164	179	335	351	368	366	43.1	43.8	44.6	48.9

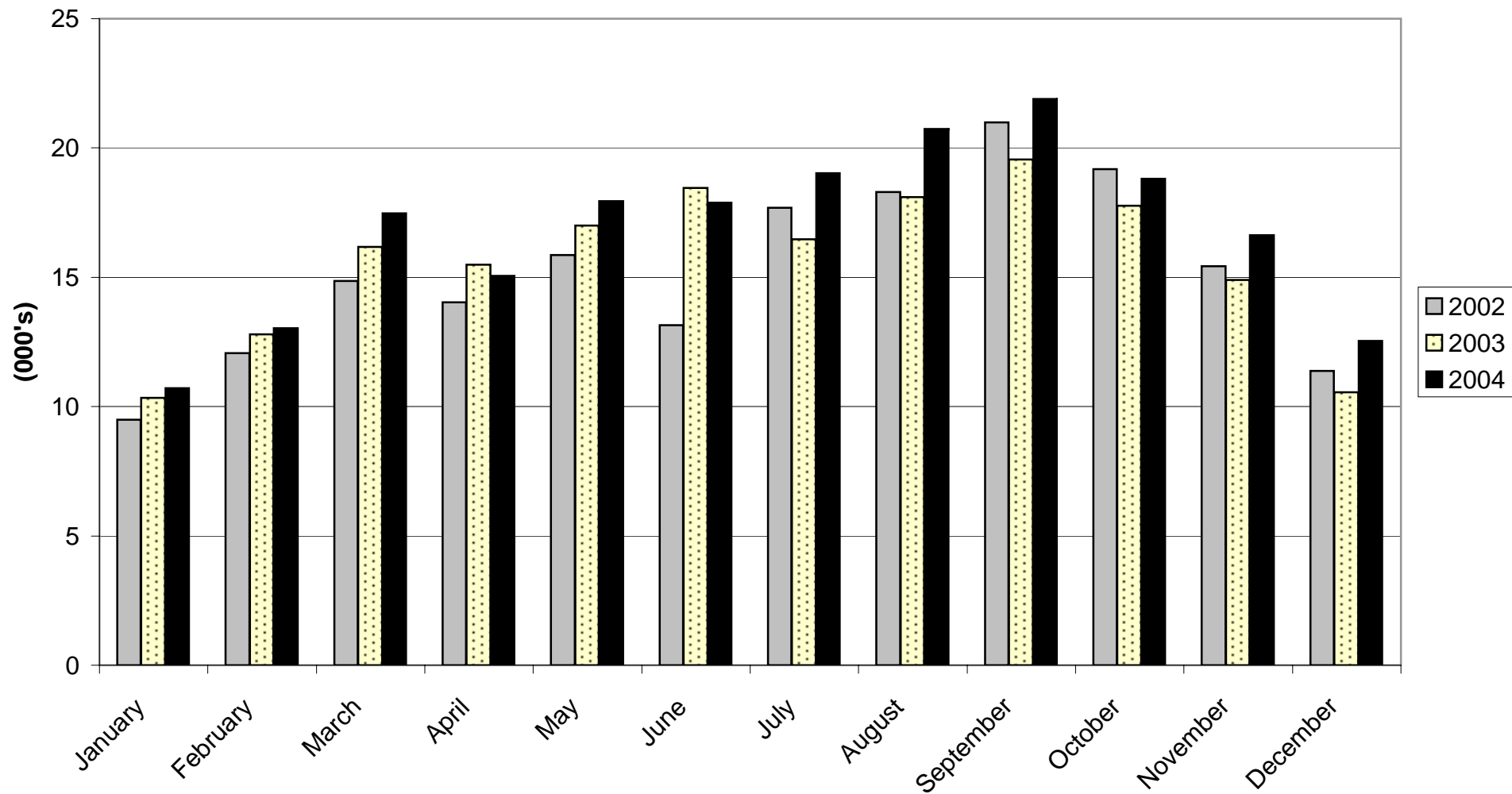
Note: Yearly totals have been rounded off and need not necessarily equal the sum of the rounded-off monthly figures.

Table 5(g): Guest Nights Sold/Offered, % Sleeper Occupancy, all hotels 2002 - 2004

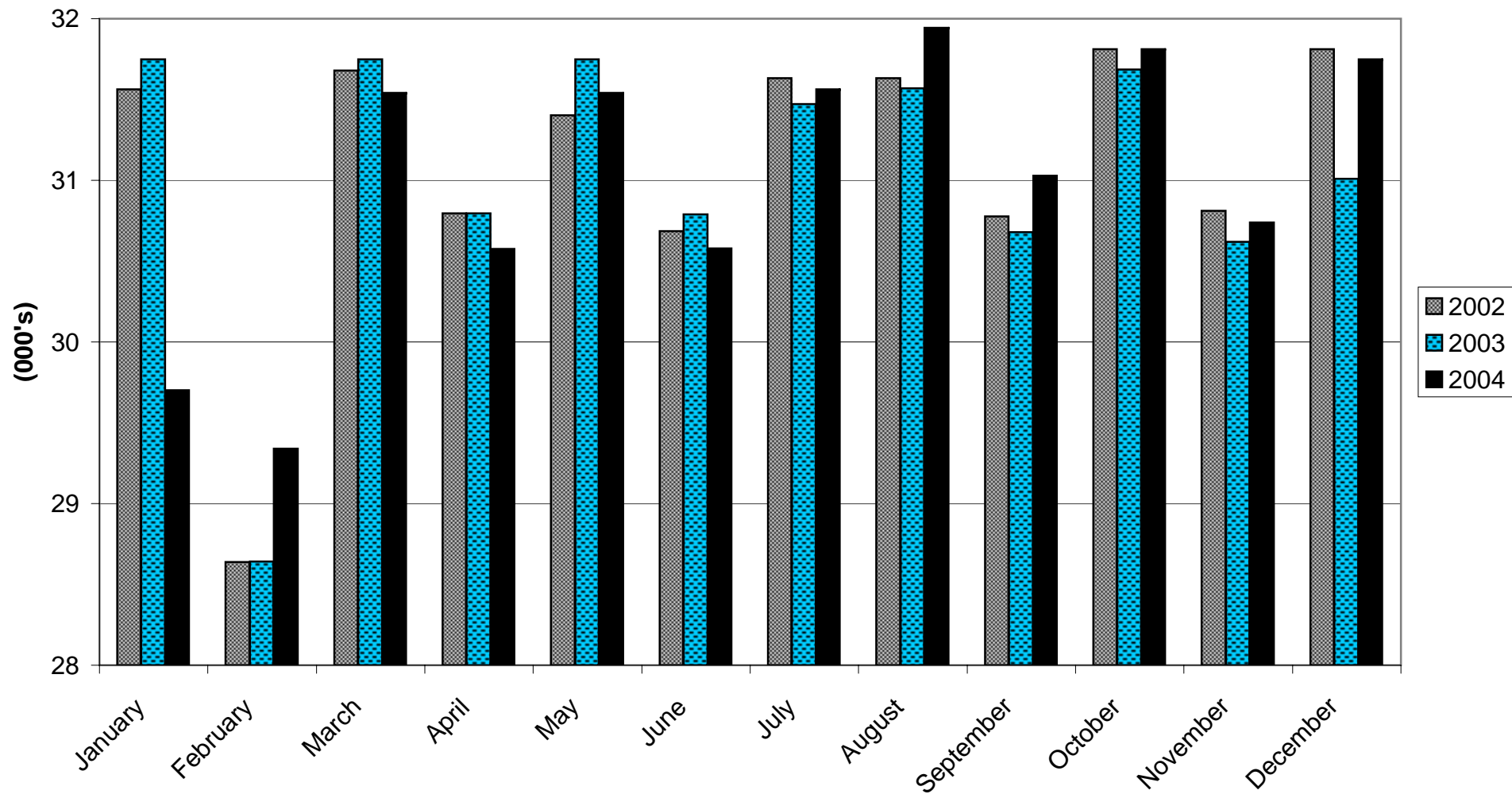
<u>MONTH</u>	<u>ALL ARRIVALS</u>								
	<u>(000's)</u>			<u>(000's)</u>			<u>%</u>		
	<u>GUEST NIGHTS SOLD</u>			<u>GUEST NIGHTS OFFERED</u>			<u>SLEEPER OCCUPANCY</u>		
	<u>2002</u>	<u>2003</u>	<u>2004</u>	<u>2002</u>	<u>2003</u>	<u>2004</u>	<u>2002</u>	<u>2003</u>	<u>2004</u>
JANUARY	9	10	11	31	31	29	30.5	33.1	36.7
FEBRUARY	12	13	13	28	28	29	42.9	45.5	45.2
MARCH	15	16	17	31	31	31	47.7	51.8	56.3
APRIL	14	15	15	30	30	30	46.3	51.1	50.0
MAY	16	17	18	31	31	31	51.3	54.4	57.8
JUNE	13	18	18	30	30	30	43.6	60.9	59.4
JULY	18	16	19	31	31	31	56.8	53.2	61.2
AUGUST	18	18	21	31	31	31	58.8	58.2	65.9
SEPTEMBER	21	20	22	30	30	31	69.3	64.8	71.7
OCTOBER	19	18	19	31	31	31	61.3	57.0	60.1
NOVEMBER	15	15	17	30	30	30	50.9	49.5	55.0
DECEMBER	11	11	13	31	31	31	36.4	34.6	40.1
TOTAL	182	188	202	367	367	366	49.7	51.2	55.1

Note: Yearly totals have been rounded off and need not necessarily equal the sum of the rounded-off monthly figures.

GUEST NIGHTS SOLD, ALL ARRIVALS, 2002 - 2004



GUEST NIGHTS OFFERED, ALL ARRIVALS, 2002 - 2004



% SLEEPER OCCUPANCY, ALL ARRIVALS, 2002 - 2004



Table 6(a): Guest Nights Sold/Offered, % Sleeper Occupancy, all hotels 1978 -1981

<u>MONTH</u>	<u>TOURIST ARRIVALS</u>											
	<u>(000's)</u>				<u>(000's)</u>				<u>%</u>			
	<u>GUEST NIGHTS SOLD</u>				<u>GUEST NIGHTS OFFERED</u>				<u>SLEEPER OCCUPANCY</u>			
	<u>1978</u>	<u>1979</u>	<u>1980</u>	<u>1981</u>	<u>1978</u>	<u>1979</u>	<u>1980</u>	<u>1981</u>	<u>1978</u>	<u>1979</u>	<u>1980</u>	<u>1981</u>
JANUARY	6	8	10	8	45	45	45	44	14.4	18.0	22.2	18.0
FEBRUARY	10	11	11	9	40	42	42	40	24.1	25.3	26.4	21.4
MARCH	13	14	17	13	45	47	46	44	28.7	30.4	36.4	30.4
APRIL	18	15	17	14	44	46	47	44	39.5	31.3	37.1	31.1
MAY	19	21	17	13	46	47	48	44	42.3	44.3	35.9	30.4
JUNE	26	27	22	14	45	47	47	42	58.0	57.4	46.3	32.7
JULY	27	30	23	12	46	48	48	42	59.1	62.7	46.7	28.5
AUGUST	27	30	28	15	45	48	47	43	59.6	63.4	59.3	34.6
SEPTEMBER	26	34	25	16	46	47	47	43	57.0	72.3	53.6	37.2
OCTOBER	22	27	21	15	47	47	46	47	47.6	57.4	45.7	32.1
NOVEMBER	15	13	11	10	44	47	44	42	33.9	27.1	25.1	24.4
DECEMBER	10	9	8	8	45	48	44	44	23.2	19.5	19.2	18.0
TOTAL	219	239	210	147	538	559	551	519	40.9	42.8	38.2	28.3

Note: Yearly totals have been rounded off and need not necessarily equal the sum of the rounded-off monthly figures.

Table 6(b): Guest Nights Sold/Offered, % Sleeper Occupancy, all hotels 1982 -1985

TOURIST ARRIVALS

<u>MONTH</u>	<u>(000's)</u>				<u>(000's)</u>				<u>%</u>			
	<u>GUEST NIGHTS SOLD</u>				<u>GUEST NIGHTS OFFERED</u>				<u>SLEEPER OCCUPANCY</u>			
	<u>1982</u>	<u>1983</u>	<u>1984</u>	<u>1985</u>	<u>1982</u>	<u>1983</u>	<u>1984</u>	<u>1985</u>	<u>1982</u>	<u>1983</u>	<u>1984</u>	<u>1985</u>
JANUARY	7	7	7	8	43	45	46	45	15.3	15.5	15.0	16.5
FEBRUARY	10	8	8	14	40	41	43	41	24.8	20.7	19.4	33.8
MARCH	13	11	12	19	44	46	47	46	30.4	24.7	24.6	42.2
APRIL	16	10	13	18	44	45	45	45	36.1	23.4	28.4	40.2
MAY	16	14	15	18	45	46	46	47	35.2	29.4	33.2	39.4
JUNE	19	18	18	24	45	45	45	45	42.2	38.7	40.6	52.9
JULY	19	16	18	23	46	47	45	48	40.5	33.6	40.0	47.5
AUGUST	18	19	20	27	45	47	47	48	40.2	41.9	42.0	57.0
SEPTEMBER	16	19	22	26	43	46	44	46	43.4	41.7	50.2	56.7
OCTOBER	14	14	19	19	45	47	46	48	29.9	30.5	41.0	40.2
NOVEMBER	9	10	11	13	44	45	45	46	21.4	21.2	24.6	28.4
DECEMBER	8	9	8	9	45	46	47	47	18.3	18.4	17.4	18.8
TOTAL	165	155	171	218	529	546	546	552	31.1	28.4	31.3	39.6

Note: Yearly totals have been rounded off and need not necessarily equal the sum of the rounded-off monthly figures.

Table 6(c): Guest Nights Sold/Offered, % Sleeper Occupancy, all hotels 1986 -1989

TOURIST ARRIVALS

<u>MONTH</u>	<u>(000's)</u>				<u>(000's)</u>				<u>%</u>			
	<u>GUEST NIGHTS SOLD</u>				<u>GUEST NIGHTS OFFERED</u>				<u>SLEEPER OCCUPANCY</u>			
	<u>1986</u>	<u>1987</u>	<u>1988</u>	<u>1989</u>	<u>1986</u>	<u>1987</u>	<u>1988</u>	<u>1989</u>	<u>1986</u>	<u>1987</u>	<u>1988</u>	<u>1989</u>
JANUARY	10	15	13	10	43	46	46	42	22.1	33.6	27.5	23.7
FEBRUARY	12	15	14	13	38	42	44	40	31.0	34.8	32.2	33.4
MARCH	16	21	19	15	43	46	48	42	38.1	46.3	39.8	36.2
APRIL	13	19	20	16	42	43	45	42	30.7	44.9	44.8	37.0
MAY	19	18	19	12	45	45	47	44	41.9	38.6	40.3	27.9
JUNE	23	16	20	14	43	44	47	43	52.8	36.9	43.5	32.7
JULY	18	15	19	13	44	45	48	43	41.0	34.3	39.2	30.6
AUGUST	21	19	17	13	46	45	48	43	46.3	42.5	34.5	30.6
SEPTEMBER	21	22	17	12	44	45	44	42	48.1	49.7	37.8	29.8
OCTOBER	20	21	17	14	45	44	46	40	45.3	46.4	37.9	34.0
NOVEMBER	18	18	14	11	43	44	43	38	41.7	41.8	32.5	27.6
DECEMBER	12	14	11	9	44	46	45	42	27.5	29.8	24.3	21.7
TOTAL	203	213	200	152	520	535	551	501	38.6	40.0	36.2	30.4

Note: Yearly totals have been rounded off and need not necessarily equal the sum of the rounded-off monthly figures.

Table 6(d): Guest Nights Sold/Offered, % Sleeper Occupancy, all hotels 1990 -1993

<u>MONTH</u>	<u>TOURIST ARRIVALS</u>											
	<u>(000's)</u>				<u>(000's)</u>				<u>%</u>			
	<u>GUEST NIGHTS SOLD</u>				<u>GUEST NIGHTS OFFERED</u>				<u>SLEEPER OCCUPANCY</u>			
	<u>1990</u>	<u>1991</u>	<u>1992</u>	<u>1993</u>	<u>1990</u>	<u>1991</u>	<u>1992</u>	<u>1993</u>	<u>1990</u>	<u>1991</u>	<u>1992</u>	<u>1993</u>
JANUARY	8	7	5	4	37	40	42	33	22.7	17.7	12.9	12.4
FEBRUARY	10	8	6	5	37	37	41	30	27.1	20.2	15.4	17.7
MARCH	13	8	9	8	42	44	46	33	31.0	19.1	19.3	23.0
APRIL	14	9	9	8	41	41	42	32	34.0	21.9	21.7	25.2
MAY	12	10	9	10	42	41	43	34	29.4	23.3	20.7	28.5
JUNE	10	8	10	10	39	44	47	32	24.3	19.4	22.0	32.7
JULY	12	10	10	8	42	43	45	32	27.4	23.2	21.3	26.2
AUGUST	10	8	10	10	41	40	44	33	23.1	21.3	22.0	30.5
SEPTEMBER	12	8	9	12	41	44	41	32	30.0	18.2	22.7	36.8
OCTOBER	11	10	9	11	40	43	42	34	27.8	23.3	20.8	33.2
NOVEMBER	8	7	6	9	40	41	32	32	19.5	16.4	20.1	27.8
DECEMBER	8	6	6	7	39	45	33	33	20.9	12.9	17.5	21.8
TOTAL	128	99	98	103	481	502	497	391	26.5	19.7	19.8	26.4

Note: Yearly totals have been rounded off and need not necessarily equal the sum of the rounded-off monthly figures.

Table 6(e): Guest Nights Sold/Offered, % Sleeper Occupancy, all hotels 1994 -1997

<u>MONTH</u>	<u>TOURIST ARRIVALS</u>											
	<u>(000's)</u>				<u>(000's)</u>				<u>%</u>			
	<u>GUEST NIGHTS SOLD</u>				<u>GUEST NIGHTS OFFERED</u>				<u>SLEEPER OCCUPANCY</u>			
	<u>1994</u>	<u>1995</u>	<u>1996</u>	<u>1997</u>	<u>1994</u>	<u>1995</u>	<u>1996</u>	<u>1997</u>	<u>1994</u>	<u>1995</u>	<u>1996</u>	<u>1997</u>
JANUARY	7	5	5	5	34	32	32	31	19.5	15.1	16.4	15.2
FEBRUARY	6	7	7	6	30	28	30	29	21.1	25.8	22.8	22.3
MARCH	8	8	9	7	33	31	32	31	24.5	26.4	26.7	21.3
APRIL	9	10	10	7	31	25	31	31	27.1	38.1	30.9	23.9
MAY	10	9	10	10	35	31	32	32	28.5	30.8	30.9	29.9
JUNE	9	11	9	9	33	30	30	30	28.3	37.2	30.5	28.9
JULY	10	11	9	9	35	32	31	31	28.7	36.2	29.3	28.6
AUGUST	8	11	10	11	35	32	31	31	25.6	34.8	32.0	34.5
SEPTEMBER	12	14	10	11	33	31	31	31	35.2	45.6	34.3	34.8
OCTOBER	11	11	10	9	35	32	31	31	30.4	34.1	30.9	28.3
NOVEMBER	7	7	7	6	33	31	30	31	20.6	23.8	21.5	20.9
DECEMBER	6	7	6	6	34	32	31	31	18.9	21.8	20.7	18.9
TOTAL	103	113	101	95	401	369	372	370	25.8	30.7	27.2	25.6

Note: Yearly totals have been rounded off and need not necessarily equal the sum of the rounded-off monthly figures.

Table 6(f): Guest Nights Sold/Offered, % Sleeper Occupancy, all hotels 1998 -2001

<u>MONTH</u>	<u>TOURIST ARRIVALS</u>											
	<u>(000's)</u>				<u>(000's)</u>				<u>%</u>			
	<u>GUEST NIGHTS SOLD</u>				<u>GUEST NIGHTS OFFERED</u>				<u>SLEEPER OCCUPANCY</u>			
	<u>1998</u>	<u>1999</u>	<u>2000</u>	<u>2001</u>	<u>1998</u>	<u>1999</u>	<u>2000</u>	<u>2001</u>	<u>1998</u>	<u>1999</u>	<u>2000</u>	<u>2001</u>
JANUARY	4	5	4	6	30	29	31	31	14.4	17.2	13.0	19.3
FEBRUARY	5	6	6	8	25	26	29	28	21.4	21.8	20.0	26.9
MARCH	7	8	8	9	28	29	31	31	25.8	27.7	25.9	30.7
APRIL	7	8	9	9	26	29	30	30	28.8	27.3	30.8	29.1
MAY	8	9	12	11	27	29	31	31	30.6	30.0	39.1	34.9
JUNE	9	9	11	12	28	29	30	30	30.5	31.4	36.6	39.5
JULY	8	8	10	11	29	29	31	31	28.4	27.6	33.4	37.0
AUGUST	10	10	12	12	29	29	31	31	36.5	35.2	37.6	40.0
SEPTEMBER	12	10	14	14	28	29	31	30	41.5	36.2	44.3	46.3
OCTOBER	10	11	10	13	29	31	31	31	34.6	34.3	31.6	40.6
NOVEMBER	8	9	8	9	28	30	30	30	27.1	28.8	26.7	29.6
DECEMBER	6	5	7	7	29	31	31	31	19.5	17.3	21.6	22.1
TOTAL	95	98	111	121	335	351	368	366	28.2	27.9	30.1	33.0

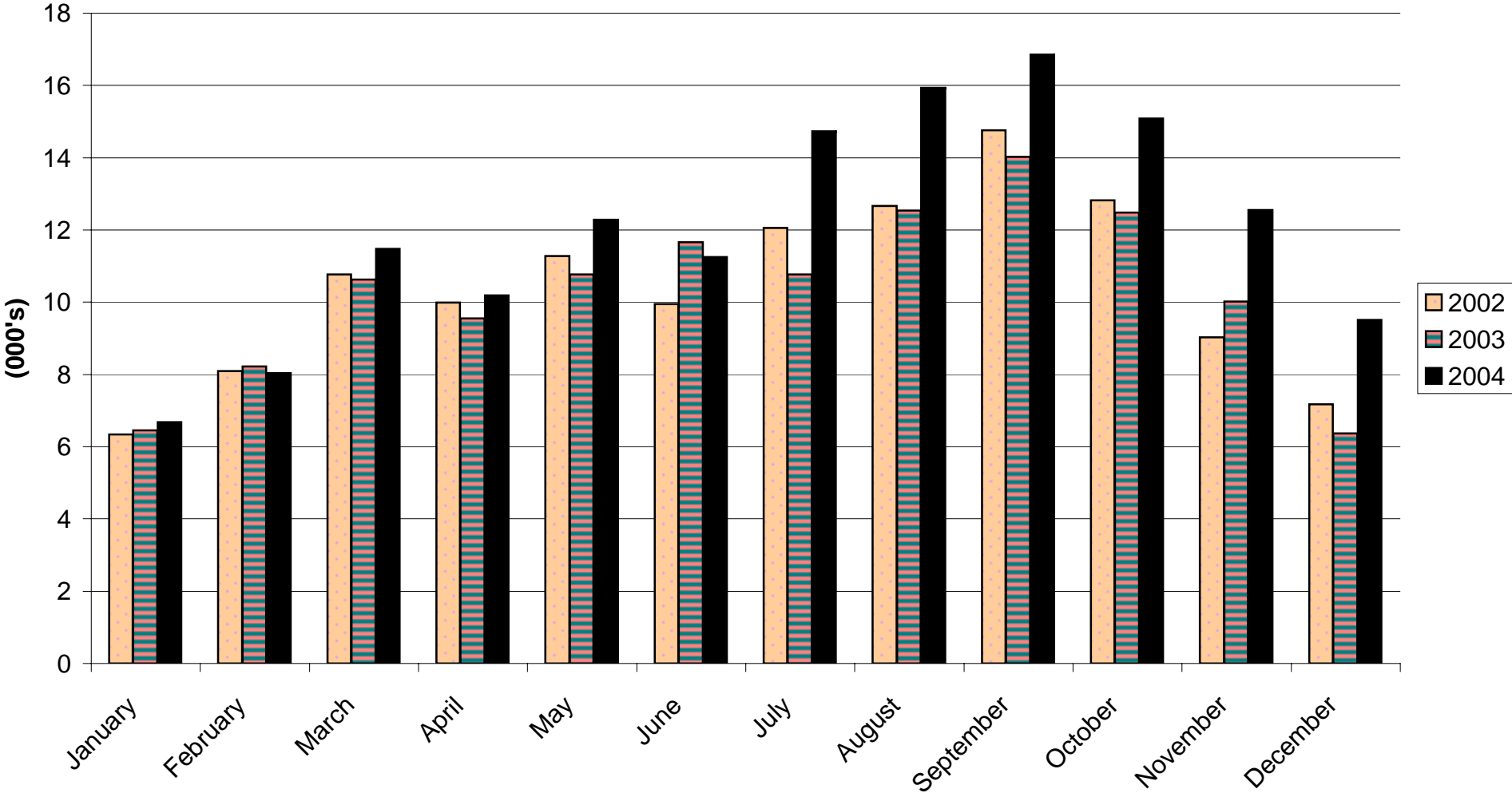
Note: Yearly totals have been rounded off and need not necessarily equal the sum of the rounded-off monthly figures.

Table 6(g): Guest Nights Sold/Offered, % Sleeper Occupancy, all hotels 2002 - 2004

<u>MONTH</u>	<u>TOURIST ARRIVALS</u>								
	<u>(000's)</u>			<u>(000's)</u>			<u>%</u>		
	<u>GUEST NIGHTS SOLD</u>			<u>GUEST NIGHTS OFFERED</u>			<u>SLEEPER OCCUPANCY</u>		
	<u>2002</u>	<u>2003</u>	<u>2004</u>	<u>2002</u>	<u>2003</u>	<u>2004</u>	<u>2002</u>	<u>2003</u>	<u>2004</u>
JANUARY	6	6	7	31	31	29	20.4	20.6	22.9
FEBRUARY	8	8	8	28	28	29	28.8	29.2	27.9
MARCH	11	11	11	31	31	31	34.5	34.0	37.0
APRIL	10	10	10	30	30	30	33.0	31.5	33.9
MAY	11	11	12	31	31	31	36.5	34.5	39.6
JUNE	10	12	11	30	30	30	33.0	38.5	37.4
JULY	12	11	15	31	31	31	38.7	34.8	47.4
AUGUST	13	13	16	31	31	31	40.7	40.4	50.7
SEPTEMBER	15	14	17	30	30	31	48.7	46.5	55.2
OCTOBER	13	12	15	31	31	31	40.9	40.0	48.2
NOVEMBER	9	10	13	30	30	30	29.8	33.2	41.5
DECEMBER	7	6	10	31	31	31	22.9	20.9	30.4
TOTAL	125	123	145	367	367	366	34.0	33.7	39.5

Note: Yearly totals have been rounded off and need not necessarily equal the sum of the rounded-off monthly figures.

GUEST NIGHTS SOLD, TOURIST ARRIVALS, 2002 - 2004



% SLEEPER OCCUPANCY, TOURIST ARRIVALS, 2002- 2004



Table 7(a): Average Length of Stay per person (nights), all hotels 1978 - 2004

ALL ARRIVALS

<u>YEAR</u>	<u>JAN</u>	<u>FEB</u>	<u>MAR</u>	<u>APR</u>	<u>MAY</u>	<u>JUN</u>	<u>JUL</u>	<u>AUG</u>	<u>SEP</u>	<u>OCT</u>	<u>NOV</u>	<u>DEC</u>	<u>TOTAL</u>
1978	4.8	5.1	5.2	6.4	6.1	7.9	8.8	8.0	7.6	6.3	5.0	5.7	6.6
1979	5.0	4.5	5.0	6.2	6.2	8.0	7.7	7.9	8.3	7.5	5.6	5.2	6.6
1980	4.5	4.5	5.8	6.5	5.2	6.5	7.6	7.9	7.8	6.4	5.2	5.3	6.2
1981	5.1	4.9	5.2	6.0	5.7	6.4	5.5	5.9	5.8	5.8	5.5	5.1	5.6
1982	5.6	5.6	5.1	6.5	6.3	7.6	8.2	6.9	6.7	6.3	5.3	5.2	6.4
1983	5.3	5.0	6.0	5.4	5.8	8.3	6.4	7.9	7.0	7.0	5.4	5.4	6.3
1984	5.3	5.2	5.9	6.2	6.1	8.0	6.8	7.4	7.7	6.1	4.9	5.1	6.3
1985	4.3	3.9	5.1	5.5	5.1	6.7	5.3	6.0	5.8	5.2	3.7	3.6	5.1
1986	4.3	3.7	4.6	4.0	4.5	5.7	5.0	5.2	5.2	5.3	4.8	3.7	4.7
1987	4.7	4.0	4.2	3.9	4.4	4.2	4.6	5.1	4.7	4.1	4.0	3.7	4.2
1988	3.6	4.1	4.1	4.3	4.3	4.9	5.0	4.6	4.6	5.2	3.8	4.6	4.4
1989	4.4	4.2	4.2	4.3	4.0	3.7	3.0	3.3	2.6	2.4	2.2	2.2	3.2
1990	3.3	3.4	2.4	2.7	3.5	2.8	2.9	3.2	3.1	3.6	3.0	3.3	3.0
1991	3.5	3.8	4.3	3.9	4.0	5.0	4.2	4.7	4.0	3.9	4.8	3.9	4.1
1992	3.7	3.1	4.0	3.8	3.9	4.0	4.2	3.9	3.9	3.7	3.7	3.7	3.8
1993	3.7	3.8	4.1	4.1	4.1	4.3	4.1	4.4	4.1	3.8	3.6	4.3	4.0
1994	4.0	4.0	4.0	4.0	3.8	4.0	4.4	3.9	3.8	3.9	3.7	3.8	3.9
1995	3.0	3.6	3.1	3.1	3.3	3.6	3.3	3.4	3.2	3.2	2.8	2.7	3.2
1996	2.8	2.6	2.9	3.0	3.2	3.3	3.2	3.4	3.4	3.1	2.9	2.6	3.1
1997	3.1	3.0	3.1	2.9	3.0	2.9	3.2	2.9	2.9	3.5	2.6	2.7	3.0
1998	2.5	3.2	3.5	3.2	3.3	3.7	3.7	3.7	4.2	3.5	3.5	3.3	3.5
1999	3.3	3.5	3.7	3.5	3.6	3.8	3.8	3.8	3.9	3.6	3.8	3.3	3.7
2000	2.9	3.2	3.0	3.2	3.9	3.5	3.9	3.5	3.4	3.1	3.0	3.2	3.4
2001	2.7	3.4	3.3	3.4	3.4	3.5	3.3	3.4	3.6	3.5	3.5	3.1	3.3
2002	3.0	2.9	3.2	3.1	3.1	3.0	3.1	3.1	3.2	3.1	3.0	2.8	3.1
2003	2.8	2.9	3.0	3.1	3.0	3.1	3.1	3.1	3.4	3.2	2.8	2.7	3.0
2004	2.9	2.9	3.2	3.2	3.1	3.2	3.6	3.7	3.5	3.4	3.1	3.2	3.3

AVERAGE LENGTH OF STAY, ALL ARRIVALS, 2002 - 2004

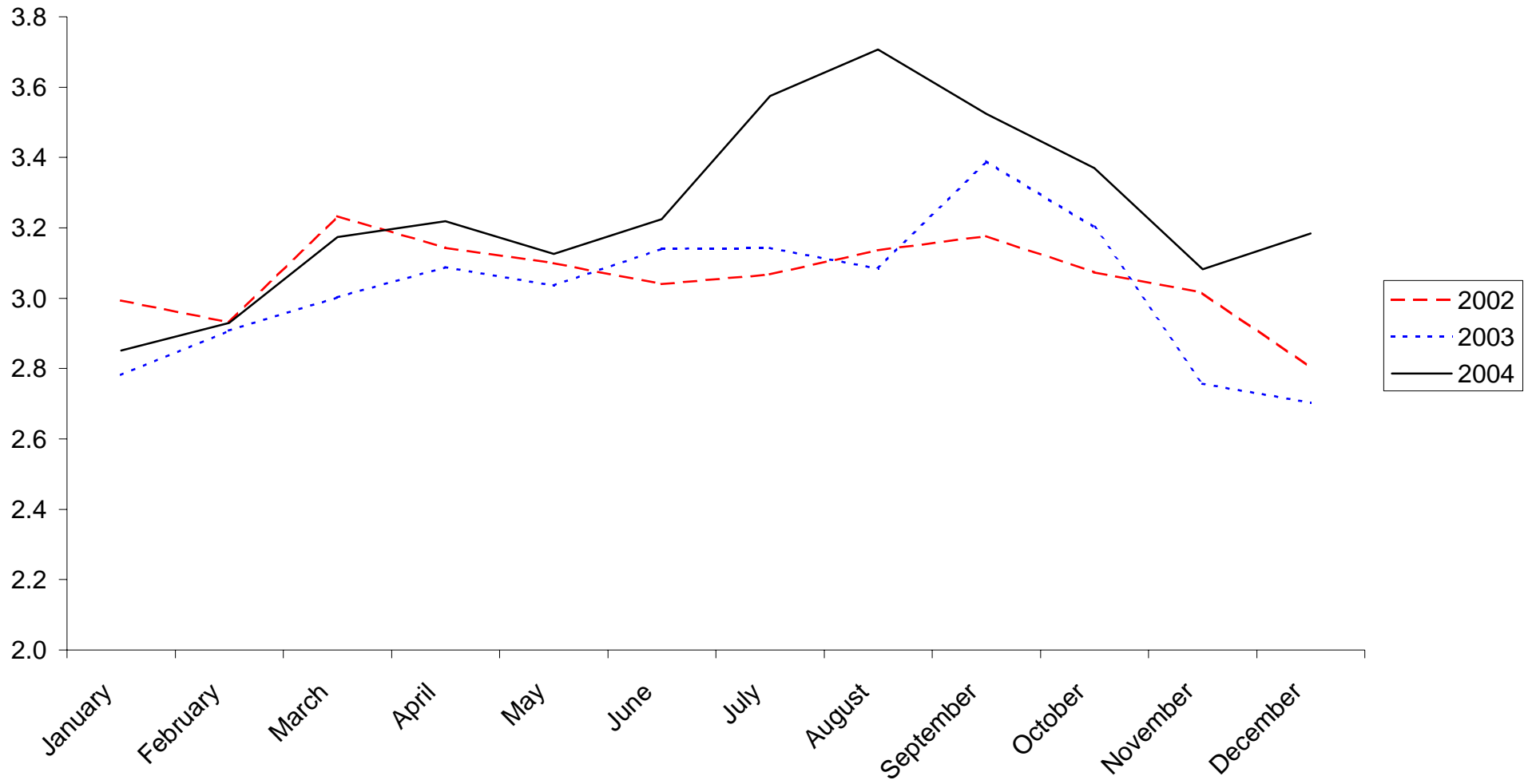


Table 7(b): Average Length of Stay per person (nights), all hotels 1978 - 2004

TOURIST ARRIVALS

<u>YEAR</u>	<u>JAN</u>	<u>FEB</u>	<u>MAR</u>	<u>APR</u>	<u>MAY</u>	<u>JUN</u>	<u>JUL</u>	<u>AUG</u>	<u>SEP</u>	<u>OCT</u>	<u>NOV</u>	<u>DEC</u>	<u>TOTAL</u>
1978	5.0	5.1	5.8	7.1	6.7	7.6	9.4	8.8	8.1	6.8	5.4	6.2	7.1
1979	4.9	4.5	5.4	6.3	6.1	7.9	7.7	8.1	8.8	7.2	5.0	5.2	6.8
1980	4.3	4.3	5.5	6.0	5.4	8.0	7.7	8.2	7.5	6.7	5.5	5.6	6.3
1981	5.0	4.1	5.1	5.8	6.3	6.1	5.6	6.4	6.4	5.9	5.7	5.0	5.6
1982	6.1	5.4	5.5	7.0	6.1	8.2	8.0	8.2	10.1	6.7	5.6	5.4	6.7
1983	6.6	5.4	6.2	5.7	6.6	8.4	7.8	9.2	7.7	7.5	5.8	6.3	7.1
1984	6.4	6.3	6.6	8.0	7.8	8.8	8.4	8.7	8.5	7.1	5.7	6.6	7.5
1985	7.3	5.2	5.4	5.4	4.9	6.8	6.0	6.3	6.5	5.5	3.7	3.6	5.5
1986	4.0	4.2	4.3	3.7	4.7	5.8	5.2	5.3	4.8	4.9	4.2	4.1	4.6
1987	4.2	4.1	4.3	3.9	4.6	4.6	4.3	4.6	4.6	4.3	3.8	4.0	4.3
1988	3.9	3.9	4.0	4.3	4.1	5.1	5.2	4.6	4.4	4.9	3.9	4.3	4.4
1989	4.2	3.8	3.7	3.8	3.5	3.4	3.3	3.2	2.8	2.6	2.4	2.6	3.2
1990	4.1	4.3	4.4	4.1	4.3	4.3	3.7	3.8	3.9	4.2	3.7	4.1	4.1
1991	3.8	3.9	3.6	4.3	4.0	4.1	4.0	3.5	3.3	3.9	4.2	3.4	3.8
1992	3.3	2.9	3.3	3.2	3.1	3.6	3.6	3.4	3.6	3.2	3.2	3.0	3.3
1993	2.7	3.5	3.7	3.8	3.8	4.4	3.8	4.1	4.1	3.9	3.8	3.8	3.8
1994	4.0	3.8	3.9	4.0	4.0	4.1	4.2	3.9	4.0	3.9	4.0	3.9	4.0
1995	3.1	3.3	3.4	3.4	3.6	4.2	3.5	3.6	3.4	3.4	3.0	2.8	3.4
1996	2.7	2.8	3.2	3.2	3.8	3.6	3.3	3.3	3.5	3.1	2.9	2.6	3.2
1997	3.2	3.3	3.5	3.4	3.4	3.3	3.2	3.2	3.5	3.1	3.2	3.0	3.3
1998	2.8	3.1	3.4	3.2	3.4	3.5	3.5	3.5	3.9	3.5	3.3	3.0	3.4
1999	3.0	3.4	3.5	3.4	3.5	3.6	3.6	3.6	3.9	3.6	3.8	3.2	3.5
2000	2.6	3.0	2.9	3.1	3.5	3.1	3.5	3.3	3.3	2.7	2.8	2.7	3.1
2001	2.6	3.2	3.0	2.9	3.1	3.5	3.1	3.0	3.4	3.3	2.6	2.6	3.1
2002	2.8	2.7	3.0	3.1	3.0	3.4	3.0	3.1	3.2	3.2	2.7	2.7	3.0
2003	2.8	2.9	3.0	2.9	3.0	3.2	3.1	3.1	3.5	3.2	2.8	2.4	3.0
2004	2.5	2.6	3.0	3.0	2.8	3.0	3.8	3.8	3.7	3.7	3.3	3.4	3.2

AVERAGE LENGTH OF STAY, TOURIST ARRIVALS, 2002 - 2004

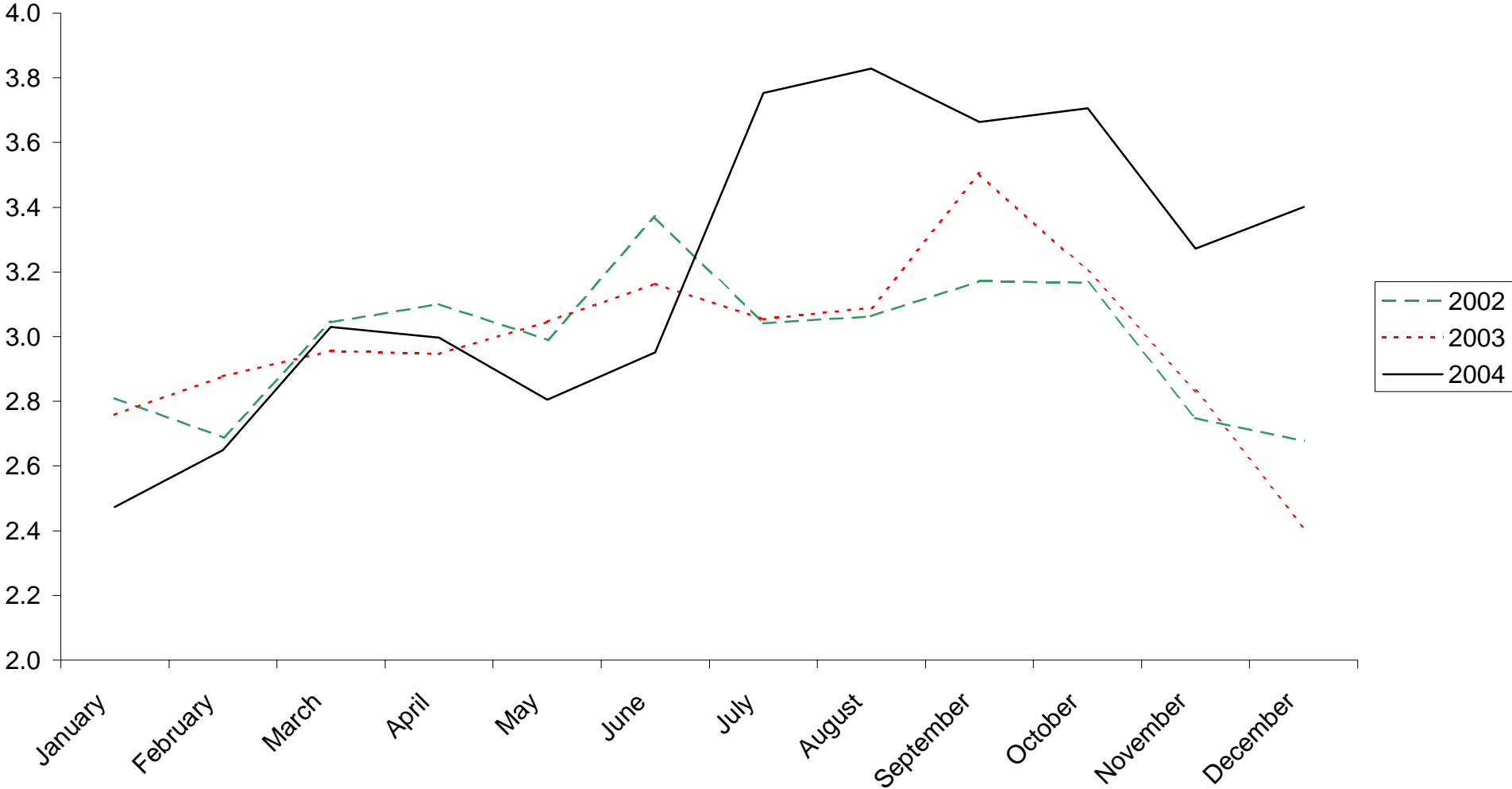
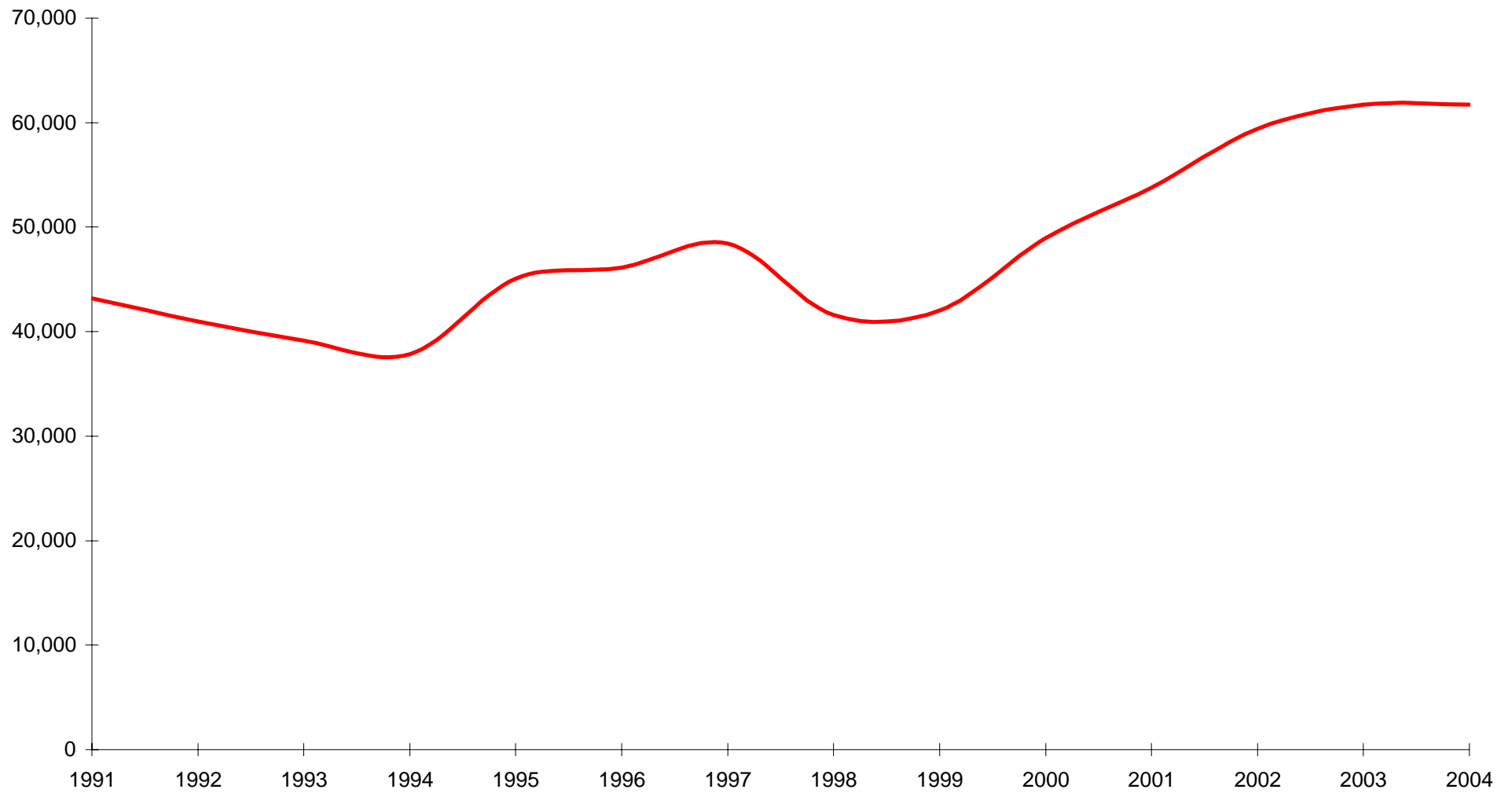


Table 8: Summary of Hotel Statistics, 1971 - 2004

<u>YEAR</u>	<u>ARRIVALS IN HOTELS</u>	<u>SLEEPER NIGHTS</u>	<u>% SLEEPER OCCUPANCY</u>	<u>AV. LENGTH OF STAY (NIGHTS)</u>
1971	35,740	214,071	42.4	6.0
1972	33,359	234,228	51.5	7.0
1973	37,012	248,238	51.2	6.7
1974	39,758	271,225	49.5	6.8
1975	45,894	307,913	53.0	6.7
1976	34,933	244,804	43.1	7.0
1977	31,401	207,593	39.4	6.6
1978	39,102	257,295	47.8	6.6
1979	44,569	296,335	53.0	6.6
1980	41,308	255,862	46.5	6.2
1981	33,417	187,679	36.2	5.6
1982	34,896	223,429	42.2	6.4
1983	33,142	209,930	38.4	6.3
1984	35,690	225,873	41.3	6.3
1985	55,119	281,525	51.0	5.1
1986	56,525	266,223	51.3	4.6
1987	64,349	279,377	52.3	4.3
1988	64,942	286,295	52.0	4.4
1989	67,934	220,083	44.0	3.2
1990	64,793	196,516	40.8	3.0
1991	43,193	178,053	35.5	4.1
1992	40,986	156,947	31.6	3.8
1993	39,123	157,215	40.2	4.0
1994	37,851	149,292	37.2	3.9
1995	45,056	144,453	39.2	3.2
1996	46,142	140,596	37.8	3.1
1997	48,420	143,972	39.0	3.0
1998	41,616	144,538	43.1	3.5
1999	42,031	153,583	43.7	3.7
2000	48,949	164,232	44.6	3.4
2001	53,776	178,951	48.9	3.3
2002	59,417	182,444	49.7	3.1
2003	61,743	187,631	51.2	3.0
2004	61,710	201,706	55.1	3.3

ARRIVALS AT HOTELS, 1991 - 2004



AVERAGE LENGTH OF STAY, 1991 - 2004

