



GOVERNMENT OF GIBRALTAR

**HOTEL OCCUPANCY
SURVEY**

2003

STATISTICS OFFICE

PREFACE

The Statistics (Hotel Occupancy) Order 1971 requires that the Government Statistician prepares a report and summary of the findings of the Hotel Occupancy Survey to be laid before the House of Assembly.

This is the twenty-eighth such report and it contains a summary of the statistics collected for the years 1977 – 2003.

I must express my thanks to the hotels for their continued co-operation in the conduct of this survey.

GOVERNMENT STATISTICIAN

JANUARY 2004

- C O N T E N T S -

		<u>PAGE</u>
A.	Definitions and Notes	
B.	Tables	1 - 44
<u>LIST OF TABLES</u>		
Table 1	General Analysis, all hotels 1977 - 2003	1
Chart	All Arrivals at Hotels, 1977 - 2003	2
Chart	% Room Occupancy, All Arrivals, 1991 - 2003	3
Chart	Average Length of Stay, All Arrivals, 1977 - 2003	4
Table 2(a)	Room Nights Sold and Offered, all hotels 1997 - 2001 (All Arrivals)	5
Table 2(b)	Room Nights Sold and Offered, all hotels 2002 - 2003 (All Arrivals)	6
Chart	Room Nights Sold, All Arrivals, 2000 - 2003	7
Table 2 (c)	Room Nights Sold and Offered, all hotels 1997 - 2001 (Tourist Arrivals)	8
Table 2 (d)	Room Nights Sold and Offered, all hotels 2002 - 2003 (Tourist Arrivals)	9
Chart	Room Nights Sold, Tourist Arrivals, 2000 - 2003	10
Table 3(a)	Room Occupancy Rates, 1993 - 1997	11
Table 3(b)	Room Occupancy Rates, 1998 - 2003	12
Chart	Room Occupancy Rates, All Arrivals, 2000 - 2003	13
Chart	Room Occupancy Rates, Tourist Arrivals, 2000 - 2003	14
Table 4(a)	Number of Arrivals by Month, all hotels 1977 - 1983	15
Table 4(b)	Number of Arrivals by Month, all hotels 1984 - 1990	16
Table 4(c)	Number of Arrivals by Month, all hotels 1991 - 1997	17
Table 4(d)	Number of Arrivals by Month, all hotels 1998 - 2003	18
Chart	All Arrivals at Hotels, 1998 - 2003	19
Table 5(a)	Guest Nights Sold/Offered, % Sleeper Occupancy, all hotels 1977 - 1980 (All Arrivals)	20
Table 5(b)	Guest Nights Sold/Offered, % Sleeper Occupancy, all hotels 1981 - 1984 (All Arrivals)	21
Table 5(c)	Guest Nights Sold/Offered, % Sleeper Occupancy, all hotels 1985 - 1988 (All Arrivals)	22

- C O N T E N T S -

<u>LIST OF TABLES</u>		<u>PAGE</u>
Table 5(d)	Guest Nights Sold/Offered, % Sleeper Occupancy, all hotels 1989 - 1992 (All Arrivals)	23
Table 5(e)	Guest Nights Sold/Offered, % Sleeper Occupancy, all hotels 1993 - 1996 (All Arrivals)	24
Table 5(f)	Guest Nights Sold/Offered, % Sleeper Occupancy, all hotels 1997 - 2000 (All Arrivals)	25
Table 5(g)	Guest Nights Sold/Offered, % Sleeper Occupancy, all hotels 2001 - 2003 (All Arrivals)	26
Chart	Guest Nights Sold, All Arrivals, 2001 - 2003	27
Chart	Guest Nights Offered, All Arrivals, 2001 - 2003	28
Chart	% Sleeper Occupancy, All Arrivals, 2001 - 2003	29
Table 6(a)	Guest Nights Sold/Offered, % Sleeper Occupancy, all hotels 1977 - 1980 (Tourist Arrivals)	30
Table 6(b)	Guest Nights Sold/Offered, % Sleeper Occupancy, all hotels 1981 - 1984 (Tourist Arrivals)	31
Table 6(c)	Guest Nights Sold/Offered, % Sleeper Occupancy, all hotels 1985 - 1988 (Tourist Arrivals)	32
Table 6(d)	Guest Nights Sold/Offered, % Sleeper Occupancy, all hotels 1989 - 1992 (Tourist Arrivals)	33
Table 6(e)	Guest Nights Sold/Offered, % Sleeper Occupancy, all hotels 1993 - 1996 (Tourist Arrivals)	34
Table 6(f)	Guest Nights Sold/Offered, % Sleeper Occupancy, all hotels 1997 - 2000 (Tourist Arrivals)	35
Table 6(g)	Guest Nights Sold/Offered, % Sleeper Occupancy, all hotels 2001 - 2003 (Tourist Arrivals)	36
Chart	Guest Nights Sold, Tourist Arrivals, 2001 - 2003	37
Chart	% Sleeper Occupancy, Tourist Arrivals, 2001 - 2003	38
Table 7(a)	Average Length of Stay per person (nights), all hotels 1977 - 2003 (All Arrivals)	39
Chart	Average Length of Stay, All Arrivals, 2001 - 2003	40
Table 7(b)	Average Length of Stay per person (nights), all hotels 1977 - 2003 (Tourist Arrivals)	41
Chart	Average Length of Stay, Tourist Arrivals, 2001 - 2003	42
Table 8	Summary Of Hotel Statistics, 1970 - 2003	43
Chart	Arrivals at Hotels, 1990 - 2003	44
Chart	Average Length of Stay, 1990 - 2003	45

A. Definitions and Notes

- (a) Tourist: A tourist is a person who is primarily in Gibraltar for the purpose of a holiday. It is nevertheless up to the discretion of the individual hotels who to include under this category.
- (b) Guest Nights: Calculated on the basis of “one guest x one night”.
- (c) Sleeper Occupancy: Calculated as the percentage of guest-nights sold over guest-nights offered. It should be noted that this measure does not necessarily give an accurate indication of the ability of the hotel to accept more guests. e.g. one person staying in a room with two beds gives a 50% sleeper occupancy and a 100% room occupancy.
- (d) In interpreting the figures it should be noted that:
- The Continental Hotel is included as from January 1986.
 - The Sunrise Motel is included for the period January 1992 to December 1994.
 - As from September 1992, the Montarik Hotel is not included.
 - As from November 1992, the Gibraltar Beach Hotel is not included.
 - The Cannon Hotel is included with effect from July 1995.
- (e) Abbreviations: GNS - Guest Nights Sold, GNO - Guest Nights Offered.

B. Tables

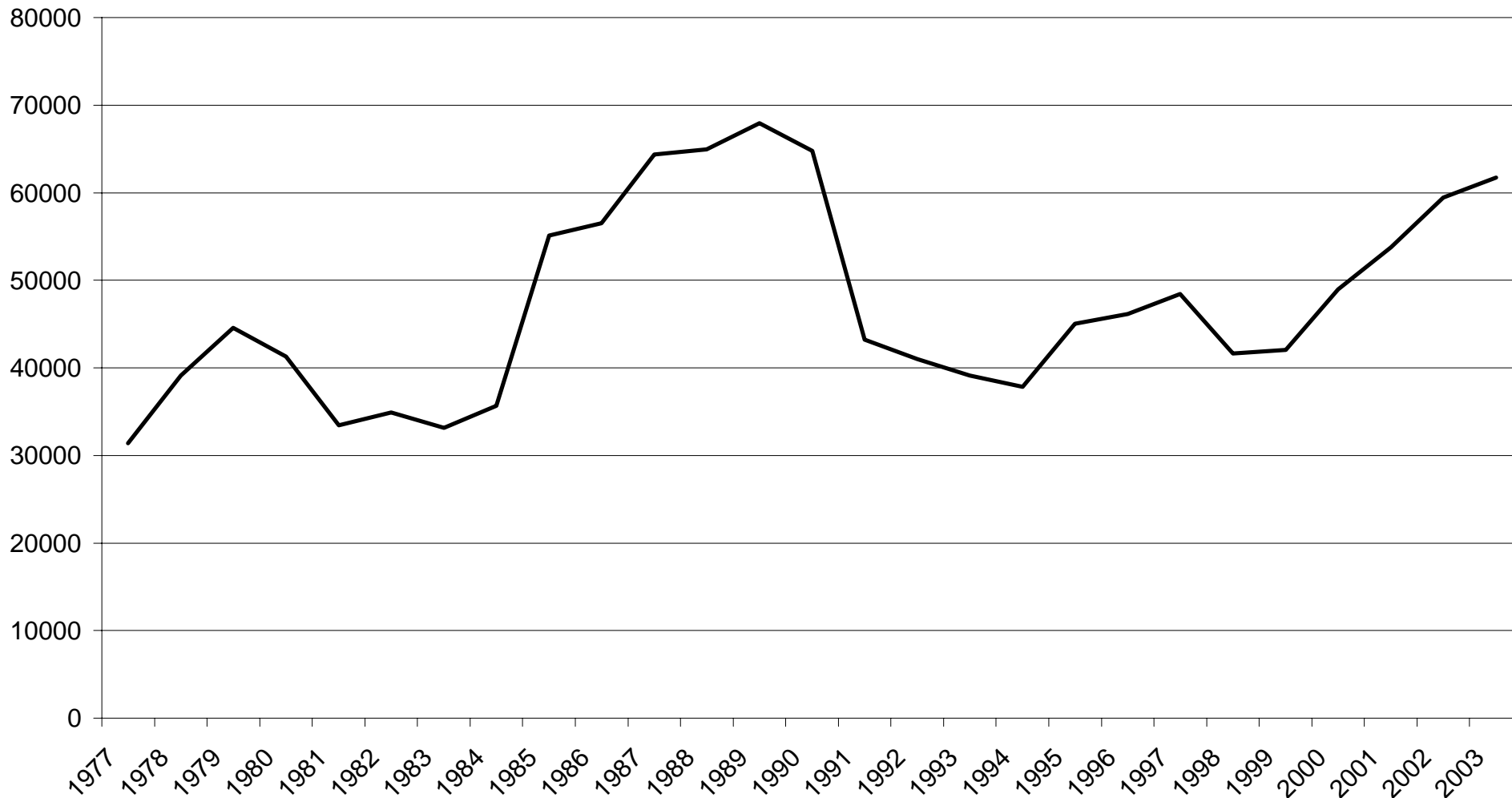
Table 1: General Analysis, All Hotels 1977 - 2003

YEAR	ALL ARRIVALS	RNO (00's)	RNS (00's) ALL	% ROOM OCCUPANCY ALL	GNO (000's)	GNS (000's) ALL	% SLEEPER OCCUPANCY ALL	AVERAGE LGTH. OF STAY ALL
1977	31402	n/a	n/a	n/a	526	208	39.4	6.6
1978	39102	n/a	n/a	n/a	539	257	47.8	6.6
1979	44569	n/a	n/a	n/a	559	296	53.0	6.6
1980	41308	n/a	n/a	n/a	551	256	46.5	6.2
1981	33417	n/a	n/a	n/a	519	188	36.2	5.6
1982	34896	n/a	n/a	n/a	529	223	42.2	6.4
1983	33142	n/a	n/a	n/a	546	210	38.4	6.3
1984	35690	n/a	n/a	n/a	546	226	41.3	6.3
1985	55119	n/a	n/a	n/a	552	282	51.0	5.1
1986	56525	n/a	n/a	n/a	519	266	51.3	4.6
1987	64349	n/a	n/a	n/a	535	278	52.3	4.3
1988	64942	n/a	n/a	61	551	286	52.0	4.4
1989	67934	n/a	n/a	53.3	501	220	44.0	3.2
1990	64793	n/a	n/a	51.3	481	197	40.8	3.0
1991	43193	n/a	n/a	50.6	502	178	35.5	4.1
1992	40986	2367	976	41.2	497	157	31.6	3.8
1993	39123	1946	941	48.4	391	157	40.2	4.0
1994	37851	1986	885	44.5	401	149	37.2	3.9
1995	45056	1919	884	46.1	369	144	39.2	3.2
1996	46142	1908	826	43.3	372	141	37.8	3.1
1997	48420	1904	900	47.3	370	144	39.0	3.0
1998	41616	1733	930	53.6	335	145	43.1	3.5
1999	42031	1792	991	55.3	351	154	43.7	3.7
2000	48949	1790	1054	58.9	368	164	44.6	3.4
2001	53776	1789	1149	64.2	366	179	48.9	3.3
2002	59417	1825	1176	64.4	367	182	49.7	3.1
2003	61743	1855	1192	64.2	367	188	51.2	3.0

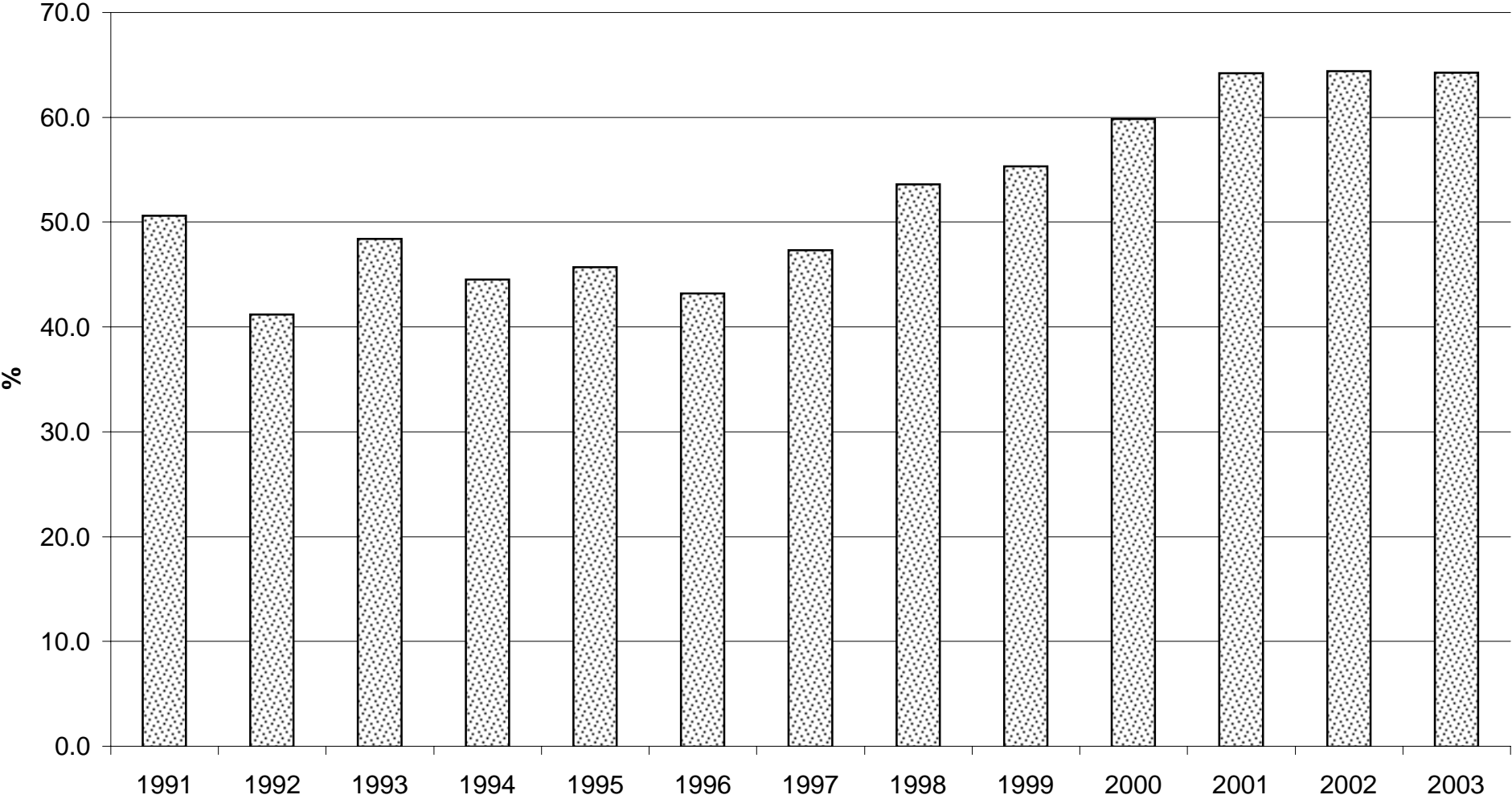
Notes:

1. RNO - Room Nights Offered.
2. RNS - Room Nights Sold.
3. GNO - Guest Nights Offered.
4. GNS - Guest Nights Sold.
5. With effect from January 1992, hotels were required under the legislation to submit returns which included the % room occupancy figures. For the period 1988 to 1991, these figures were provided voluntarily by the hotels.

ALL ARRIVALS AT HOTELS, 1977 - 2003



% ROOM OCCUPANCY, ALL ARRIVALS, 1991 - 2003



AVERAGE LENGTH OF STAY, ALL ARRIVALS, 1977 - 2003

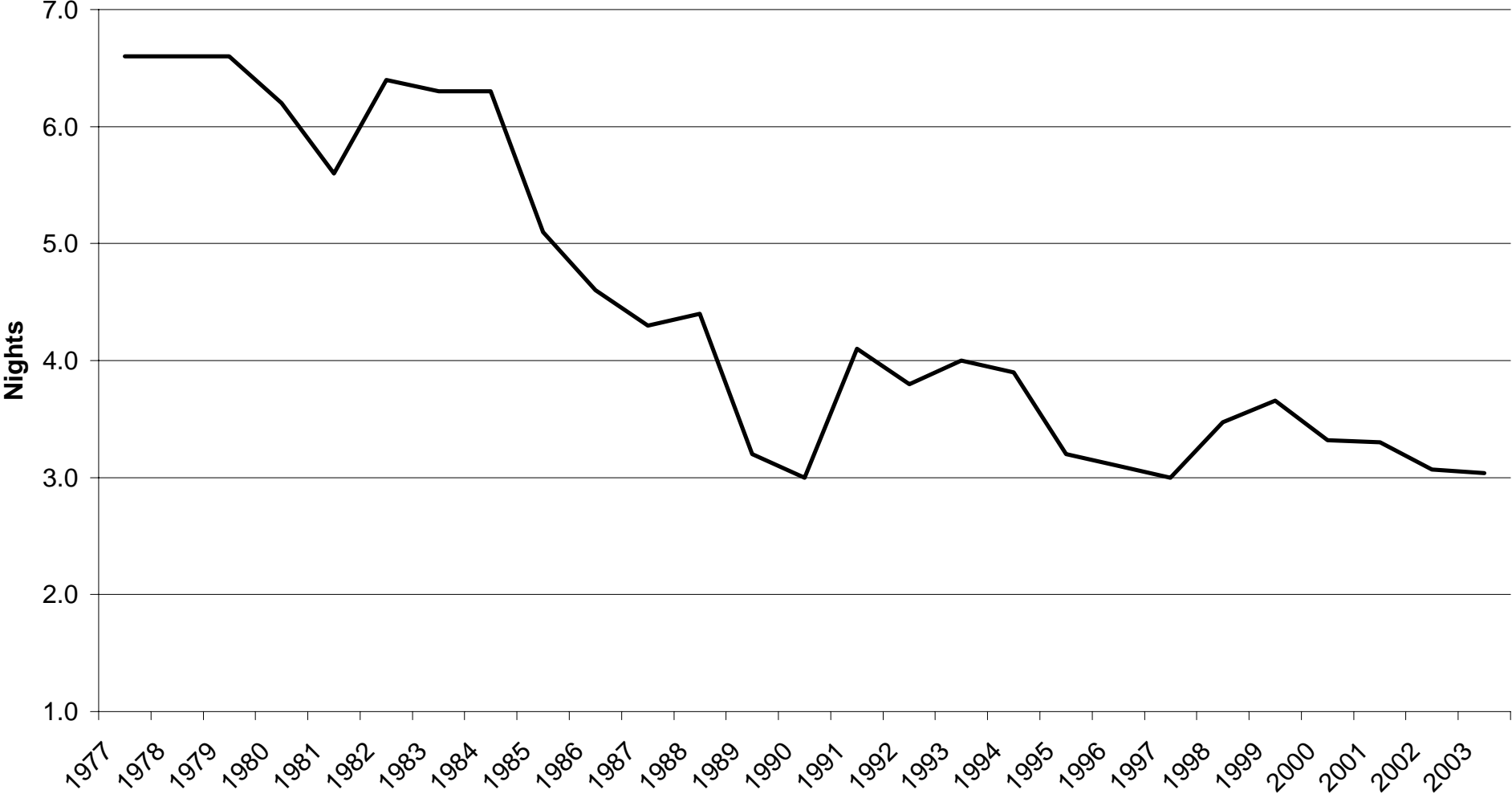


Table 2(a): Room Nights Sold and Offered, all hotels 1997 -2001

ALL ARRIVALS

MONTH	ROOM NIGHTS SOLD (00's)					ROOM NIGHTS OFFERED (00's)				
	1997	1998	1999	2000	2001	1997	1998	1999	2000	2001
JANUARY	46	52	59	46	67	160	150	152	150	151
FEBRUARY	59	58	60	59	76	149	130	137	141	137
MARCH	72	72	89	78	102	173	150	152	151	151
APRIL	68	69	84	86	97	158	134	148	147	147
MAY	84	87	83	125	108	163	141	152	152	151
JUNE	82	82	89	106	111	158	140	149	148	147
JULY	78	80	83	96	101	162	144	152	151	151
AUGUST	88	94	99	94	100	162	144	152	151	151
SEPTEMBER	99	103	103	119	120	158	148	148	148	148
OCTOBER	90	90	98	98	112	161	152	151	151	152
NOVEMBER	80	82	91	78	87	159	148	147	147	148
DECEMBER	59	61	53	68	68	151	152	151	151	152
TOTAL	900	930	991	1054	1149	1904	1733	1792	1790	1789

Note: Yearly totals have been rounded off and need not necessarily equal the sum of the rounded-off monthly figures.

Table 2(b): Room Nights Sold and Offered, all hotels 2002 - 2003

ALL ARRIVALS

MONTH	ROOM NIGHTS SOLD (00's)		ROOM NIGHTS OFFERED (00's)	
	2002	2003	2002	2003
JANUARY	64	74	152	158
FEBRUARY	78	84	138	142
MARCH	95	105	152	158
APRIL	91	102	148	153
MAY	91	102	151	158
JUNE	106	117	148	153
JULY	112	104	157	158
AUGUST	106	100	158	157
SEPTEMBER	128	121	153	152
OCTOBER	115	112	158	157
NOVEMBER	102	97	153	152
DECEMBER	76	68	158	157
TOTAL	1176	1192	1825	1855

Note: Yearly totals have been rounded off and need not necessarily equal the sum of the rounded-off monthly figures.

ROOM NIGHTS SOLD, ALL ARRIVALS, 2000 - 2003

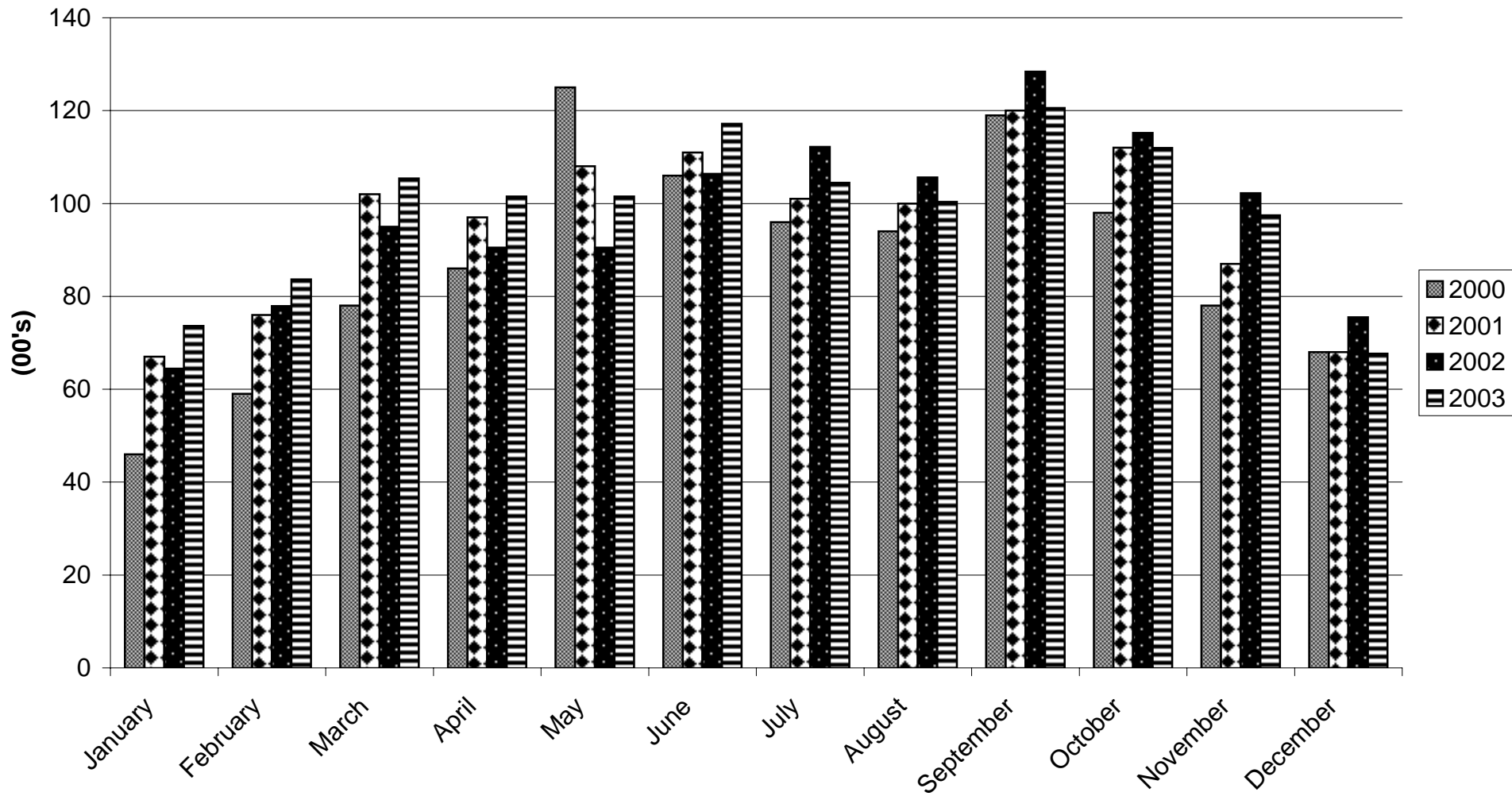


Table 2(c): Room Nights Sold and Offered, all hotels 1997 -2001

TOURIST ARRIVALS

MONTH	ROOM NIGHTS SOLD (00's)					ROOM NIGHTS OFFERED (00's)				
	1997	1998	1999	2000	2001	1997	1998	1999	2000	2001
JANUARY	24	35	33	30	40	160	150	152	150	151
FEBRUARY	35	38	37	35	46	149	130	137	141	137
MARCH	45	54	52	50	60	173	150	152	151	151
APRIL	40	45	49	56	53	158	134	148	147	147
MAY	52	57	52	77	64	163	141	152	152	151
JUNE	47	53	55	66	71	158	140	149	148	147
JULY	44	50	50	60	67	162	144	152	151	151
AUGUST	49	61	61	65	68	162	144	152	151	151
SEPTEMBER	55	70	65	80	82	158	148	148	148	148
OCTOBER	45	60	63	66	74	161	152	151	151	152
NOVEMBER	40	48	52	50	55	159	148	147	147	148
DECEMBER	30	35	34	41	41	151	152	151	151	152
TOTAL	500	605	602	675	721	1904	1733	1792	1790	1789

Note: Yearly totals have been rounded off and need not necessarily equal the sum of the rounded-off monthly figures.

Table 2(d): Room Nights Sold and Offered, all hotels 2002 - 2003

TOURIST ARRIVALS

MONTH	ROOM NIGHTS SOLD (00's)		ROOM NIGHTS OFFERED (00's)	
	2002	2003	2002	2003
JANUARY	39	43	152	158
FEBRUARY	48	45	138	142
MARCH	66	65	152	158
APRIL	61	58	148	153
MAY	69	64	151	158
JUNE	60	70	148	153
JULY	74	64	157	158
AUGUST	71	67	158	157
SEPTEMBER	87	82	153	152
OCTOBER	71	74	158	157
NOVEMBER	56	61	153	152
DECEMBER	45	39	158	157
TOTAL	747	731	1825	1855

Note: Yearly totals have been rounded off and need not necessarily equal the sum of the rounded-off monthly figures.

ROOM NIGHTS SOLD, TOURIST ARRIVALS, 2000 - 2003

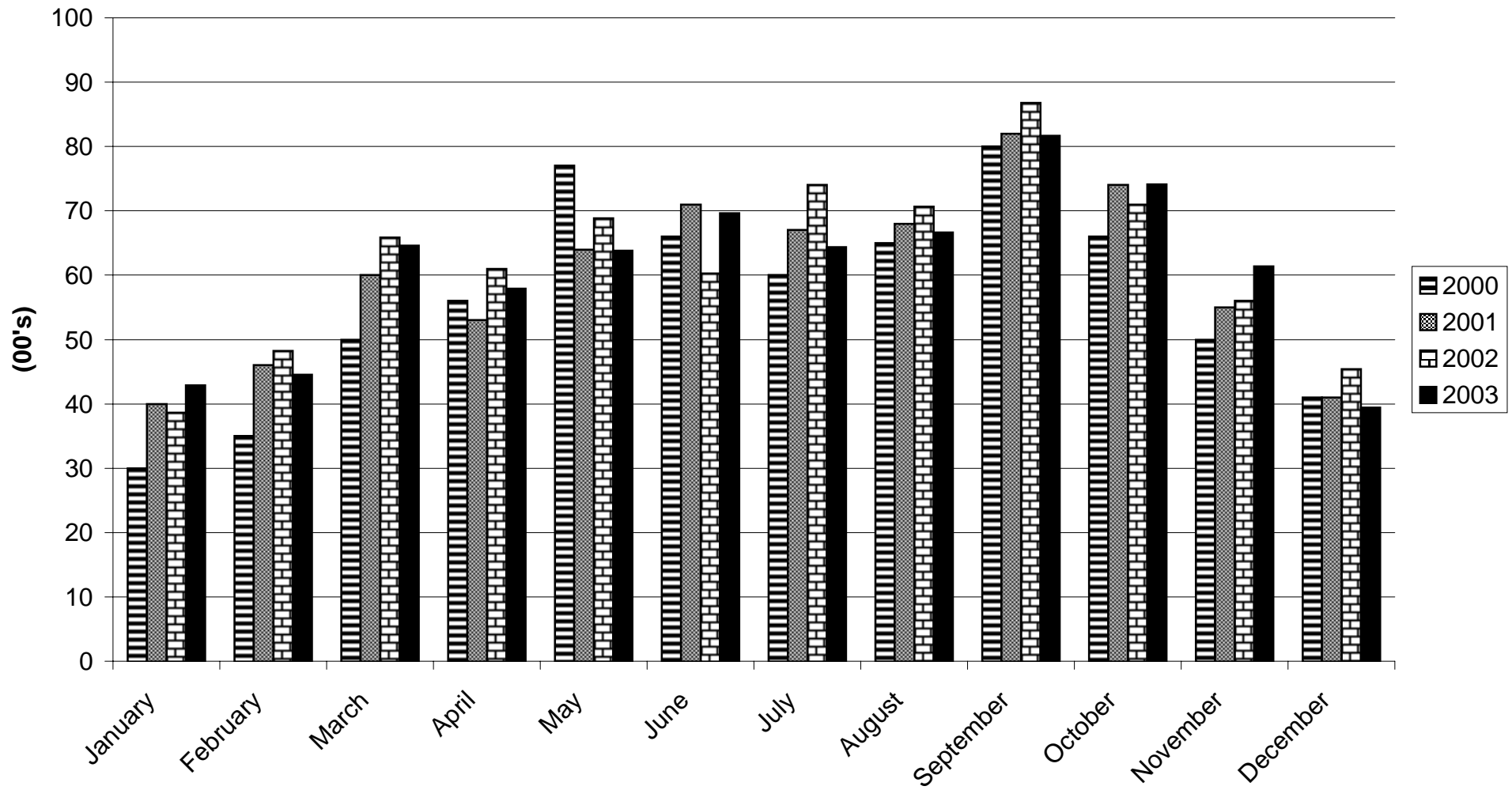


Table 3(a): Room Occupancy Rates, 1993 -1997

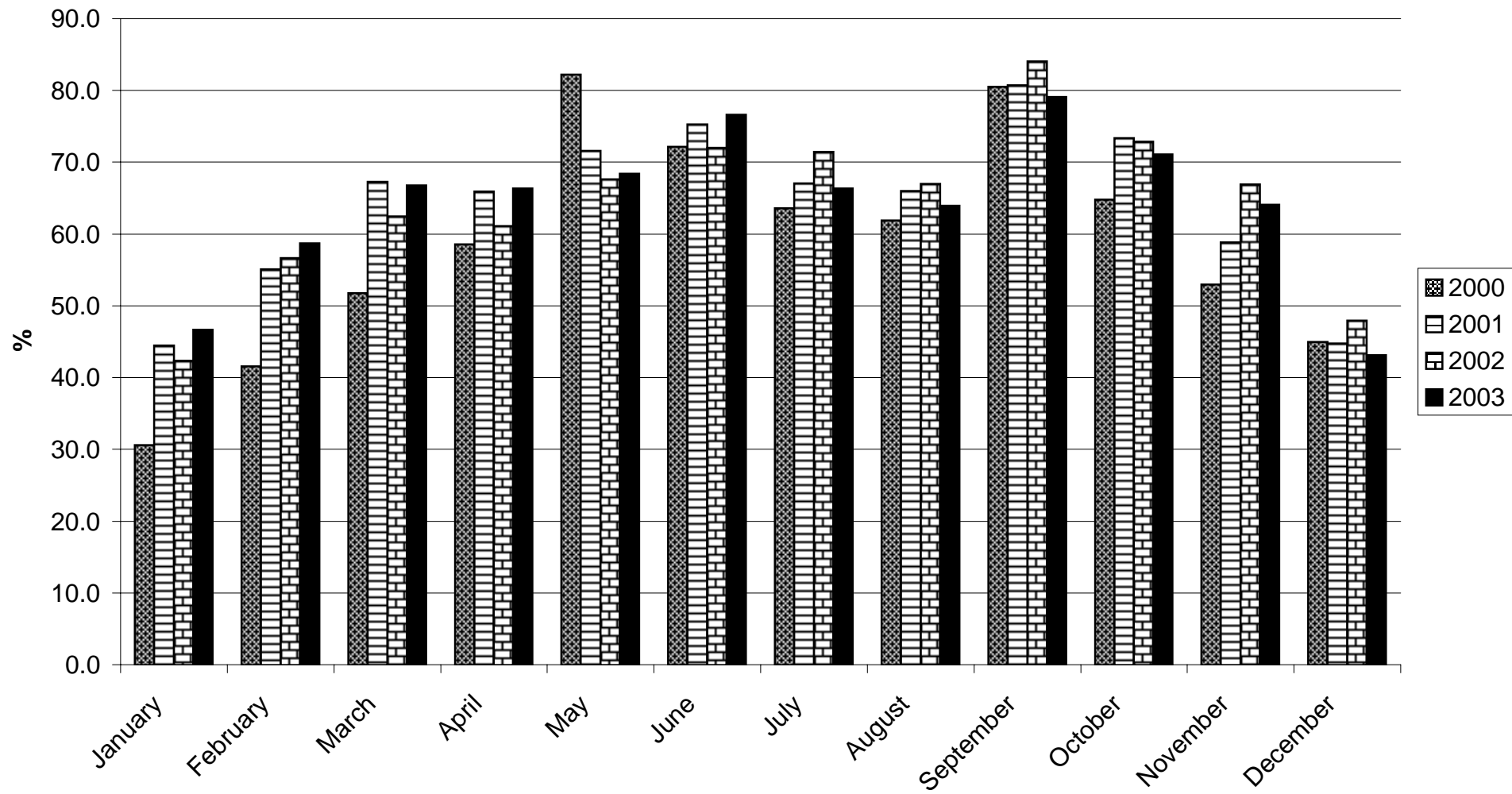
MONTH	ALL ARRIVALS					TOURIST ARRIVALS				
	1993	1994	1995	1996	1997	1993	1994	1995	1996	1997
JANUARY	30.6	37.5	23.1	30.4	28.6	15.9	23.6	16.2	16.3	14.8
FEBRUARY	42.5	39.0	39.7	34.2	39.9	22.4	23.6	26.2	21.8	23.4
MARCH	45.6	45.5	42.1	42.6	41.7	28.0	27.3	30.8	26.9	26.3
APRIL	46.3	43.5	52.7	44.2	43.3	29.3	26.8	38.8	30.1	25.1
MAY	57.0	49.7	50.3	49.3	51.5	33.6	28.4	35.4	31.7	31.5
JUNE	55.7	48.9	54.2	51.8	52.2	36.1	31.6	41.2	32.6	30.0
JULY	48.9	51.4	56.0	41.0	48.3	29.8	31.9	38.1	27.4	27.0
AUGUST	48.9	42.5	51.4	44.5	54.3	31.7	28.0	37.3	29.7	30.2
SEPTEMBER	63.0	57.6	64.4	59.0	62.5	37.2	38.8	51.0	34.3	35.0
OCTOBER	58.3	50.4	48.5	49.4	56.1	35.3	32.2	38.7	30.2	28.2
NOVEMBER	46.2	36.5	35.2	37.0	50.7	29.5	24.7	27.0	22.5	25.4
DECEMBER	36.3	31.5	31.7	36.2	38.9	24.9	22.7	24.5	20.4	19.7
TOTAL	48.4	44.5	46.1	43.3	47.3	29.5	28.3	33.8	27.0	26.3

Note: The yearly totals for 1995 and 1996 have been adjusted as a result of a program malfunction in the cumulative totals for those years.

Table 3(b): Room Occupancy Rates, 1998 - 2003

MONTH	ALL ARRIVALS						TOURIST ARRIVALS					
	1998	1999	2000	2001	2002	2003	1998	1999	2000	2001	2002	2003
JANUARY	34.8	38.7	30.6	44.4	42.3	46.7	23.1	21.9	19.6	26.1	25.4	27.2
FEBRUARY	44.7	43.9	41.6	55.1	56.6	58.7	29.4	26.9	24.8	33.7	35.1	31.3
MARCH	48.3	58.4	51.7	67.3	62.4	66.8	36.0	34.0	33.1	39.4	43.3	40.9
APRIL	51.4	56.5	58.6	66.0	61.1	66.4	33.5	32.9	38.3	35.8	41.2	37.9
MAY	61.6	54.5	82.2	71.6	67.6	68.4	40.4	34.4	50.9	42.6	45.5	40.5
JUNE	58.9	59.7	72.2	75.3	72.0	76.6	37.7	37.1	44.4	48.2	40.8	45.5
JULY	55.7	54.6	63.6	67.0	71.4	66.3	34.6	32.6	39.6	44.5	47.1	40.9
AUGUST	65.1	65.4	61.9	66.0	67.0	63.9	42.4	40.2	42.9	44.7	44.8	42.5
SEPTEMBER	69.4	69.9	80.5	80.7	84.0	79.1	47.0	43.9	54.2	55.2	56.8	53.6
OCTOBER	59.3	64.9	64.8	73.3	72.9	71.1	39.5	41.6	43.4	48.9	44.9	47.1
NOVEMBER	55.1	62.0	52.9	58.8	66.9	64.1	32.2	35.0	33.7	37.2	36.6	40.3
DECEMBER	39.7	35.1	45.0	44.8	47.9	43.1	23.1	22.4	26.8	27.3	28.8	25.1
TOTAL	53.6	55.3	58.9	64.2	64.4	64.2	34.9	33.6	37.7	40.3	40.9	39.4

ROOM OCCUPANCY RATES, ALL ARRIVALS, 2000 - 2003



ROOM OCCUPANCY RATES, TOURIST ARRIVALS, 2000 - 2003

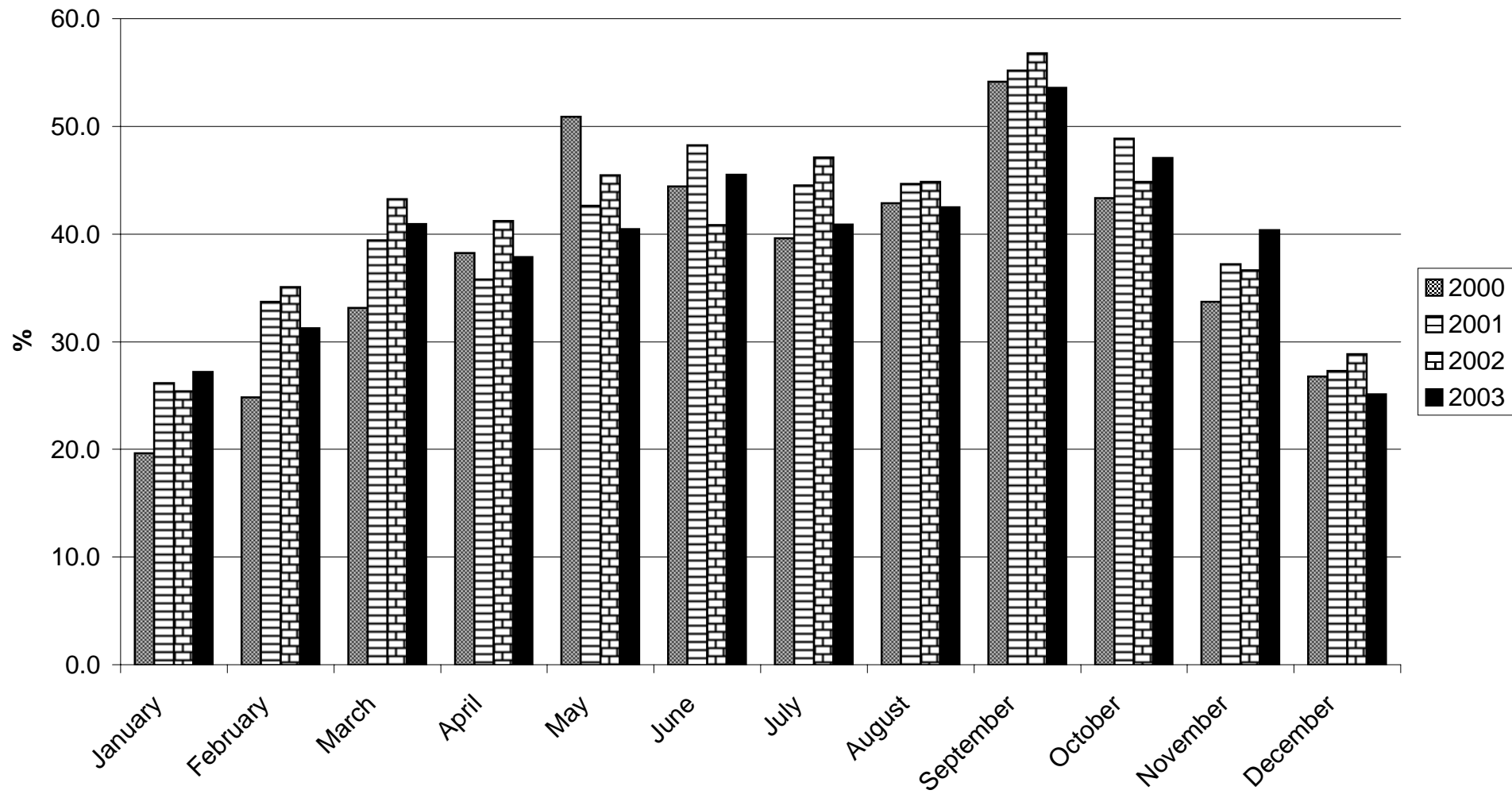


Table 4(a): Number of Arrivals by Month, all hotels 1977 -1983

MONTH	ALL ARRIVALS (00's)							TOURIST ARRIVALS (00's)						
	1977	1978	1979	1980	1981	1982	1983	1977	1978	1979	1980	1981	1982	1983
JANUARY	16	18	21	27	20	16	16	10	13	16	23	16	11	11
FEBRUARY	25	24	38	31	26	25	23	18	19	23	26	21	18	16
MARCH	28	31	40	37	33	37	26	20	22	27	31	26	24	18
APRIL	25	32	28	35	29	34	30	19	25	23	29	24	23	19
MAY	28	36	39	43	29	33	34	25	29	34	32	23	26	21
JUNE	30	41	41	44	28	32	27	26	35	34	27	23	23	20
JULY	31	35	45	34	31	29	31	27	29	39	29	21	23	20
AUGUST	34	38	46	39	32	34	32	28	30	37	34	23	22	21
SEPTEMBER	26	39	47	38	33	33	36	23	33	39	34	25	23	25
OCTOBER	26	40	46	37	31	31	30	24	33	38	31	25	20	19
NOVEMBER	25	35	32	26	23	23	25	17	27	26	20	18	17	16
DECEMBER	20	23	23	22	20	22	21	16	17	18	15	16	15	14
TOTAL	314	392	446	413	334	349	331	253	312	354	331	261	245	220

Note: Yearly totals have been rounded off and need not necessarily equal the sum of the rounded-off monthly figures.

Table 4(b): Number of Arrivals by Month, all hotels 1984 -1990

MONTH	ALL ARRIVALS (00's)							TOURIST ARRIVALS (00's)						
	1984	1985	1986	1987	1988	1989	1990	1984	1985	1986	1987	1988	1989	1990
JANUARY	18	26	31	41	46	34	34	11	10	24	37	32	24	20
FEBRUARY	25	45	40	46	47	43	41	13	27	29	35	36	35	24
MARCH	26	49	46	63	63	52	79	17	36	38	50	47	41	30
APRIL	29	46	44	62	61	53	84	16	33	36	50	48	41	34
MAY	38	46	57	58	60	46	60	20	37	40	38	46	36	28
JUNE	28	46	51	51	58	50	53	21	35	39	35	40	42	23
JULY	33	52	45	44	54	66	63	21	38	34	36	36	39	31
AUGUST	34	54	52	51	53	59	46	23	43	40	41	36	41	25
SEPTEMBER	35	54	55	62	58	74	58	26	41	44	48	38	44	31
OCTOBER	40	51	50	63	49	77	50	27	35	42	48	36	53	26
NOVEMBER	30	46	49	60	58	67	41	20	35	43	48	36	44	21
DECEMBER	21	36	46	52	42	58	39	12	24	29	34	26	35	20
TOTAL	357	551	566	653	649	679	648	227	394	438	500	457	475	313

Note: Yearly totals have been rounded off and need not necessarily equal the sum of the rounded-off monthly figures.

Table 4(c): Number of Arrivals by Month, all hotels 1991 -1997

MONTH	ALL ARRIVALS (00's)							TOURIST ARRIVALS (00's)						
	1991	1992	1993	1994	1995	1996	1997	1991	1992	1993	1994	1995	1996	1997
JANUARY	34	23	19	25	20	28	24	19	16	15	17	16	20	15
FEBRUARY	34	30	24	24	28	34	32	19	22	15	17	22	25	19
MARCH	39	34	29	31	34	40	33	23	27	21	21	24	27	19
APRIL	36	36	30	31	40	41	39	21	28	21	21	28	30	22
MAY	42	40	38	39	38	42	48	24	29	26	24	26	26	28
JUNE	32	41	35	33	39	41	47	21	28	24	23	27	26	27
JULY	39	38	33	34	46	38	43	25	26	22	24	33	27	28
AUGUST	35	36	33	33	44	39	55	24	29	25	23	31	30	33
SEPTEMBER	43	41	44	43	57	47	54	24	26	29	29	41	30	31
OCTOBER	47	39	45	39	41	43	39	25	27	29	27	32	31	28
NOVEMBER	26	28	35	25	31	33	38	16	20	23	17	25	22	20
DECEMBER	25	24	25	22	32	35	32	17	19	19	16	25	25	19
TOTAL	432	410	391	379	451	461	484	260	299	270	259	331	319	289

Note: Yearly totals have been rounded off and need not necessarily equal the sum of the rounded-off monthly figures.

Table 4(d): Number of Arrivals by Month, all hotels 1998 - 2003

MONTH	ALL ARRIVALS (00's)						TOURIST ARRIVALS (00's)					
	1998	1999	2000	2001	2002	2003	1999	1999	2000	2001	2002	2003
JANUARY	30	25.76	22	31	32	37	16	16.65	15	23	23	23
FEBRUARY	28	25.96	28	33	41	44	17	16.94	19	24	30	29
MARCH	31	35.67	39	45	46	54	21	23.24	28	32	35	36
APRIL	34	36.58	42	43	45	50	23	22.89	30	31	32	32
MAY	38	35.83	48	50	51	56	25	24.79	35	35	38	35
JUNE	35	37.59	48	50	43	59	24	25.08	36	34	30	37
JULY	34	34.46	40	50	58	52	23	22.38	29	37	40	35
AUGUST	42	42.93	46	53	58	59	30	28.39	35	41	41	41
SEPTEMBER	40	41.58	56	54	66	58	30	26.6	41	41	47	40
OCTOBER	42	43.29	48	51	62	56	29	29.64	36	38	40	39
NOVEMBER	36	36.56	39	43	51	54	24	23.37	29	34	33	35
DECEMBER	28	24.1	33	35	41	39	18	16.77	24	25	27	26
TOTAL	416	420.52	489	538	594	617	279	276.95	359	394	415	409

Note: Yearly totals have been rounded off and need not necessarily equal the sum of the rounded-off monthly figures.

ALL ARRIVALS AT HOTELS, 1998 - 2003

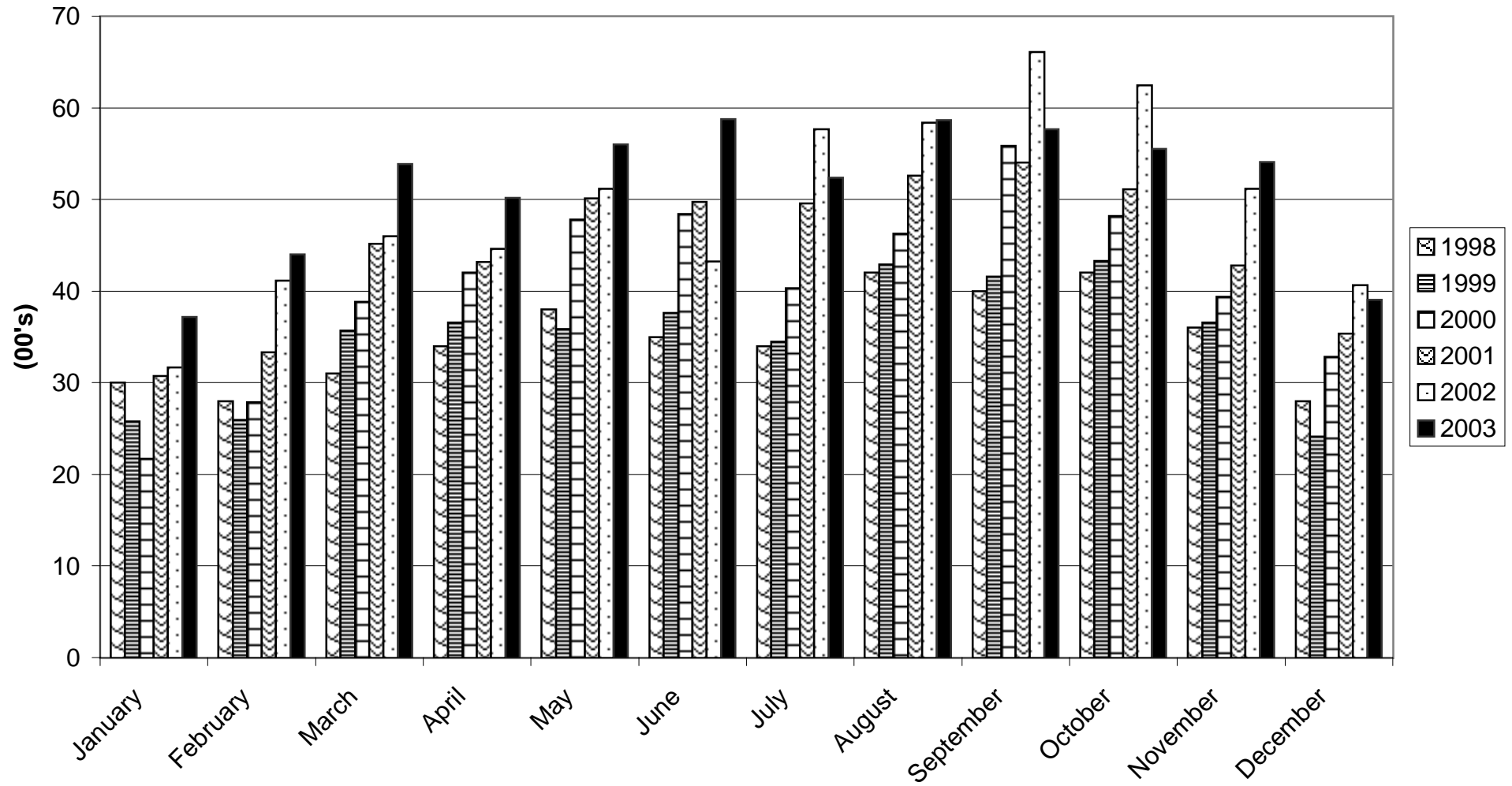


Table 5(a): Guest Nights Sold/Offered, % Sleeper Occupancy, all hotels 1977 -1980

ALL ARRIVALS

MONTH	GNS (000's)				GNO (000's)				% SLEEPER OCCUPANCY			
	1977	1978	1979	1980	1977	1978	1979	1980	1977	1978	1979	1980
JANUARY	10	9	10	12	44	45	45	45	23.0	19.3	23.3	26.6
FEBRUARY	17	12	17	14	40	40	42	42	41.3	30.2	40.3	32.9
MARCH	18	16	20	21	46	45	47	46	39.0	35.0	43.1	46.4
APRIL	15	21	17	23	44	44	46	47	33.9	46.4	38.0	48.5
MAY	17	22	24	22	45	46	47	48	37.6	48.4	50.9	46.9
JUNE	21	32	33	28	44	45	47	47	47.6	71.2	69.2	60.2
JULY	22	30	35	26	43	46	48	48	51.0	65.8	71.8	53.1
AUGUST	26	30	37	31	43	45	48	47	60.0	66.8	76.9	64.9
SEPTEMBER	21	30	39	30	44	46	47	47	48.8	64.3	82.2	63.0
OCTOBER	19	25	34	24	46	47	47	46	40.9	53.6	73.2	52.2
NOVEMBER	12	17	18	14	44	44	47	44	27.2	39.4	38.8	31.8
DECEMBER	11	13	12	11	45	45	48	44	24.0	29.1	24.7	26.2
TOTAL	209	257	296	256	528	538	559	551	39.4	47.8	53.0	46.5

Note: Yearly totals have been rounded off and need not necessarily equal the sum of the rounded-off monthly figures.

Table 5(b): Guest Nights Sold/Offered, % Sleeper Occupancy, all hotels 1981 -1984

ALL ARRIVALS

MONTH	GNS (000's)				GNO (000's)				% SLEEPER OCCUPANCY			
	1981	1982	1983	1984	1981	1982	1983	1984	1981	1982	1983	1984
JANUARY	10	9	9	9	44	43	45	46	23.2	20.2	19.0	20.7
FEBRUARY	13	14	11	13	40	40	41	43	31.9	35.2	27.7	30.0
MARCH	17	19	16	15	44	44	46	47	38.8	42.4	34.8	32.5
APRIL	18	22	16	18	44	44	45	45	40.3	50.5	35.9	39.9
MAY	16	23	20	23	44	45	46	46	37.1	50.0	43.2	50.5
JUNE	18	24	23	23	42	45	45	45	42.0	54.7	49.7	50.8
JULY	17	24	20	22	42	46	47	45	40.2	51.9	42.3	50.1
AUGUST	19	24	25	25	43	45	47	47	43.5	52.0	54.0	53.0
SEPTEMBER	19	22	25	27	43	43	46	44	44.1	51.7	54.6	61.0
OCTOBER	18	19	21	25	47	45	47	46	39.1	42.6	43.7	53.2
NOVEMBER	13	12	13	15	42	44	45	45	30.1	27.9	30.2	32.3
DECEMBER	10	11	11	11	44	45	46	47	23.6	25.6	24.4	22.9
TOTAL	188	223	210	226	519	529	546	546	36.2	42.2	38.4	41.3

Note: Yearly totals have been rounded off and need not necessarily equal the sum of the rounded-off monthly figures.

Table 5(c): Guest Nights Sold/Offered, % Sleeper Occupancy, all hotels 1985 -1988

ALL ARRIVALS

MONTH	GNS (000's)				GNO (000's)				% SLEEPER OCCUPANCY			
	1985	1986	1987	1988	1985	1986	1987	1988	1985	1986	1987	1988
JANUARY	11	13	19	16	45	43	46	46	24.3	30.1	42.1	35.8
FEBRUARY	18	15	18	19	41	38	42	44	42.7	39.0	43.9	42.6
MARCH	25	21	26	26	46	43	46	48	54.0	48.7	57.5	53.6
APRIL	25	18	24	26	45	42	43	45	56.8	42.0	55.6	57.1
MAY	23	25	25	26	47	45	45	47	50.3	57.2	55.7	55.1
JUNE	31	29	22	29	45	43	44	47	69.4	67.9	49.1	61.6
JULY	28	23	20	27	48	44	45	48	58.0	51.8	44.5	55.8
AUGUST	32	27	26	24	48	46	45	48	67.7	59.7	57.7	50.4
SEPTEMBER	32	29	29	26	46	44	45	44	68.2	64.8	65.6	60.4
OCTOBER	27	26	26	26	48	45	44	46	55.6	59.3	58.8	56.4
NOVEMBER	17	23	24	22	46	43	44	43	36.9	54.1	54.4	51.4
DECEMBER	13	17	20	19	47	44	46	45	27.3	38.5	42.5	42.6
TOTAL	282	266	279	286	552	520	535	551	51.0	51.3	52.3	52.0

Note: Yearly totals have been rounded off and need not necessarily equal the sum of the rounded-off monthly figures.

Table 5(d): Guest Nights Sold/Offered, % Sleeper Occupancy, all hotels 1989 -1992

ALL ARRIVALS

MONTH	GNS (000's)				GNO (000's)				% SLEEPER OCCUPANCY			
	1989	1990	1991	1992	1989	1990	1991	1992	1989	1990	1991	1992
JANUARY	15	11	12	9	42	37	40	42	35.2	31.2	29.4	20.6
FEBRUARY	18	14	13	9	40	37	37	41	46.0	37.3	34.5	22.8
MARCH	22	19	17	14	42	42	44	46	52.0	45.3	37.5	29.6
APRIL	23	23	14	14	42	41	41	42	54.8	55.4	34.0	32.6
MAY	19	21	17	15	44	42	41	43	41.9	50.4	40.2	35.6
JUNE	19	15	16	16	43	39	44	47	43.9	37.3	35.8	34.8
JULY	20	18	16	16	43	42	43	45	46.8	43.8	37.9	35.2
AUGUST	19	15	16	14	43	41	40	44	45.1	35.2	41.2	32.2
SEPTEMBER	19	18	17	16	42	41	44	41	46.0	44.4	39.2	39.7
OCTOBER	19	18	18	15	40	40	43	42	46.2	44.5	42.5	34.6
NOVEMBER	14	12	13	10	38	40	41	32	38.2	30.2	31.1	32.6
DECEMBER	13	13	10	9	42	39	45	33	31.2	32.4	22.4	27.0
TOTAL	220	197	178	157	501	481	502	497	44.0	40.8	35.5	31.6

Note: Yearly totals have been rounded off and need not necessarily equal the sum of the rounded-off monthly figures.

Table 5(e): Guest Nights Sold/Offered, % Sleeper Occupancy, all hotels 1993 -1996

ALL ARRIVALS

MONTH	GNS (000's)				GNO (000's)				% SLEEPER OCCUPANCY			
	1993	1994	1995	1996	1993	1994	1995	1996	1993	1994	1995	1996
JANUARY	7	10	6	8	33	34	32	32	21.5	29.4	19.0	24.9
FEBRUARY	9	9	10	9	30	30	28	30	30.1	31.3	34.9	29.9
MARCH	12	12	10	12	33	33	31	32	36.2	37.2	33.4	36.3
APRIL	12	12	13	12	32	31	25	31	38.3	39.2	49.5	39.1
MAY	16	15	13	14	34	35	31	32	45.6	42.5	41.4	43.0
JUNE	15	14	14	13	32	33	30	30	48.0	40.6	46.3	37.2
JULY	14	15	15	12	32	35	32	31	41.8	42.4	48.2	39.0
AUGUST	14	13	15	13	33	35	32	31	44.0	37.0	46.2	42.3
SEPTEMBER	18	16	18	16	32	33	31	31	56.2	48.9	58.0	51.9
OCTOBER	17	15	13	13	34	35	32	31	50.9	43.9	41.1	42.8
NOVEMBER	13	9	9	10	32	33	31	30	39.4	27.8	28.1	31.3
DECEMBER	10	9	9	9	33	34	32	31	29.6	25.2	26.7	29.0
TOTAL	157	149	144	141	391	401	369	372	40.2	37.2	39.2	37.8

Note: Yearly totals have been rounded off and need not necessarily equal the sum of the rounded-off monthly figures.

Table 5(f): Guest Nights Sold/Offered, % Sleeper Occupancy, all hotels 1997 -2000

ALL ARRIVALS

MONTH	GNS (000's)				GNO (000's)				% SLEEPER OCCUPANCY			
	1997	1998	1999	2000	1997	1998	1999	2000	1997	1998	1999	2000
JANUARY	8	7	8	6	31	30	29	31	24.1	24.8	28.8	20.0
FEBRUARY	10	9	9	9	29	25	26	29	34.1	35.4	34.2	30.4
MARCH	10	11	13	12	31	28	29	31	33.0	38.8	45.5	37.5
APRIL	11	11	13	14	31	26	29	30	36.3	42.4	44.3	45.0
MAY	14	12	13	19	32	27	29	31	45.0	45.6	43.7	60.3
JUNE	13	13	14	17	30	28	29	30	44.4	45.9	49.1	56.6
JULY	14	13	13	16	31	29	29	31	44.1	43.9	44.5	50.2
AUGUST	16	16	16	16	31	29	29	31	51.3	54.4	56.3	51.8
SEPTEMBER	16	17	16	19	31	28	29	31	50.7	59.8	56.9	61.7
OCTOBER	14	15	15	15	31	29	31	31	44.1	50.2	50.0	48.7
NOVEMBER	10	12	14	12	31	28	30	30	31.7	43.8	46.0	38.9
DECEMBER	9	9	8	11	31	29	31	31	28.2	32.2	25.6	34.1
TOTAL	144	145	154	164	370	335	351	368	39.0	43.1	43.8	44.6

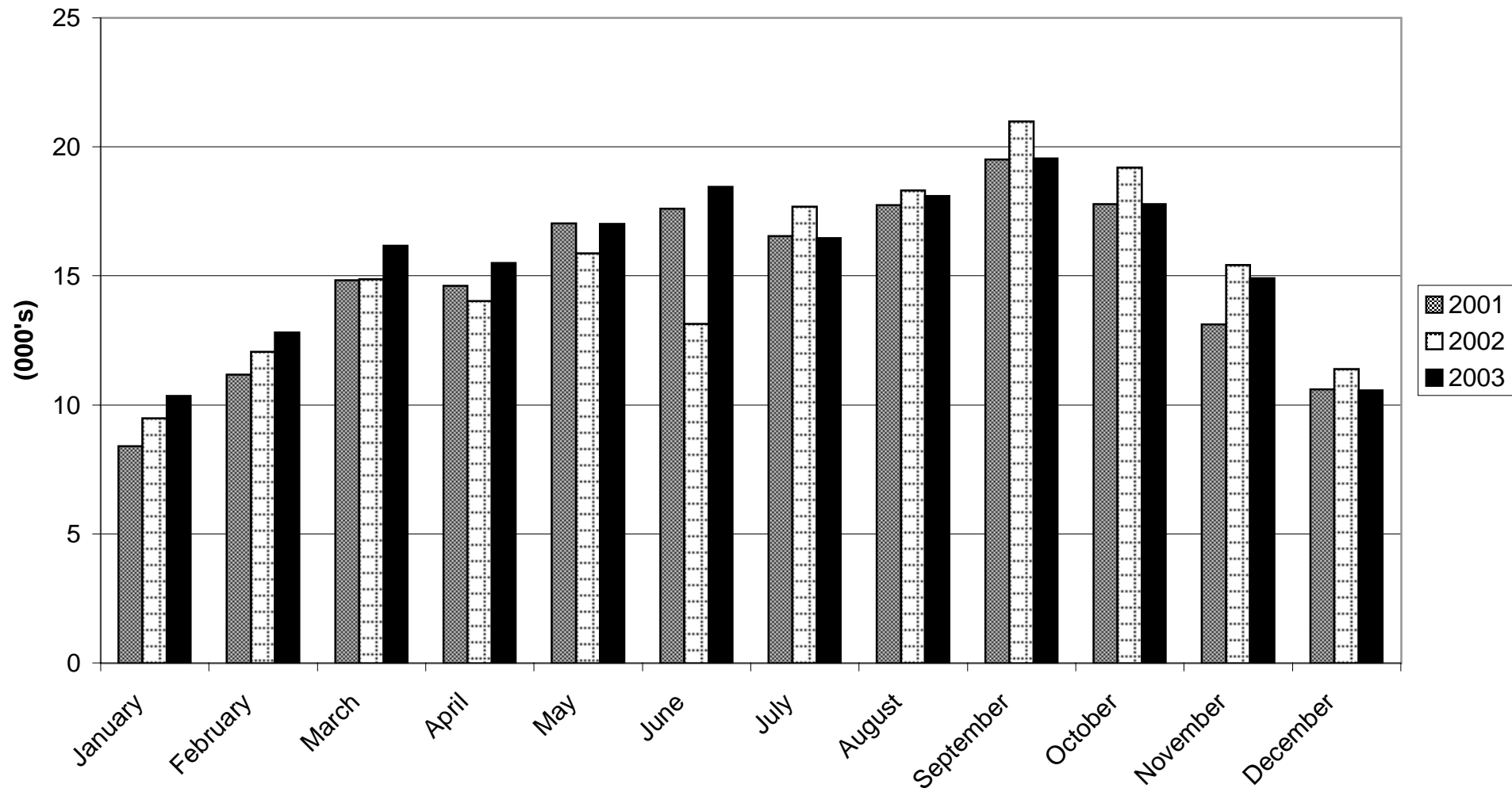
Note: Yearly totals have been rounded off and need not necessarily equal the sum of the rounded-off monthly figures.

Table 5(g): ALL ARRIVALS - Guest Nights Sold/Offered, % Sleeper Occupancy, all hotels 2001 - 2003

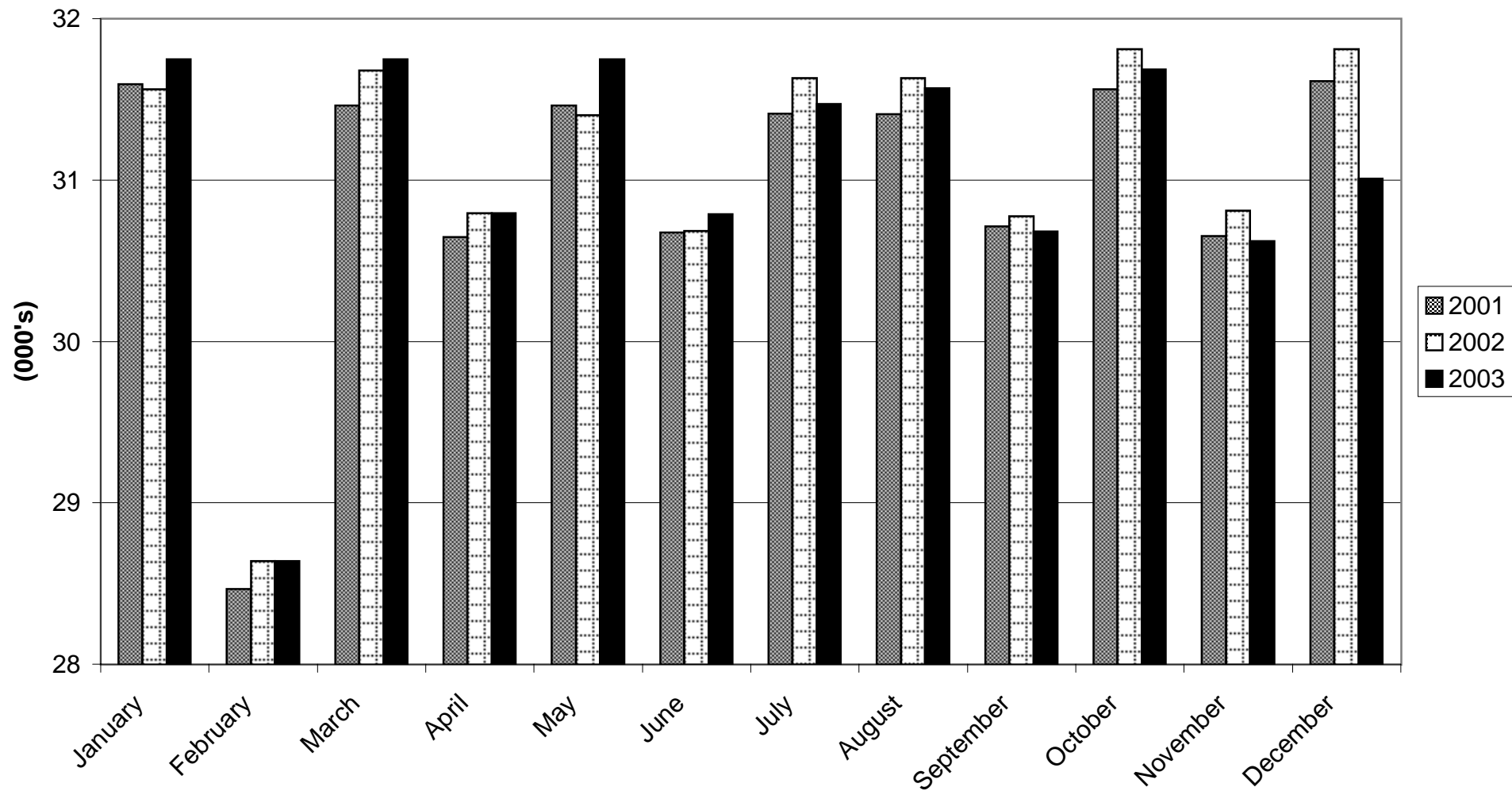
MONTH	GUEST NIGHTS SOLD (000's)			GUEST NIGHTS OFFERED (000's)			% SLEEPER OCCUPANCY		
	2001	2002	2003	2001	2002	2003	2001	2002	2003
JANUARY	8	9	10	31	31	31	27.0	30.5	33.1
FEBRUARY	11	12	13	28	28	28	40.0	42.9	45.5
MARCH	15	15	16	31	31	31	47.9	47.7	51.8
APRIL	15	14	15	30	30	30	48.4	46.3	51.1
MAY	17	16	17	31	31	31	55.0	51.3	54.4
JUNE	18	13	18	30	30	30	58.3	43.6	60.9
JULY	17	18	16	31	31	31	53.5	56.8	53.2
AUGUST	18	18	18	31	31	31	57.4	58.8	58.2
SEPTEMBER	20	21	20	30	30	30	64.6	69.3	64.8
OCTOBER	18	19	18	31	31	31	57.3	61.3	57.0
NOVEMBER	13	15	15	30	30	30	43.5	50.9	49.5
DECEMBER	11	11	11	31	31	31	34.1	36.4	34.6
TOTAL	179	182	188	366	367	367	48.9	49.7	51.2

Note: Yearly totals have been rounded off and need not necessarily equal the sum of the rounded-off monthly figures.

GUEST NIGHTS SOLD, ALL ARRIVALS, 2001 - 2003



GUEST NIGHTS OFFERED, ALL ARRIVALS, 2001 - 2003



% SLEEPER OCCUPANCY, ALL ARRIVALS, 2001 - 2003

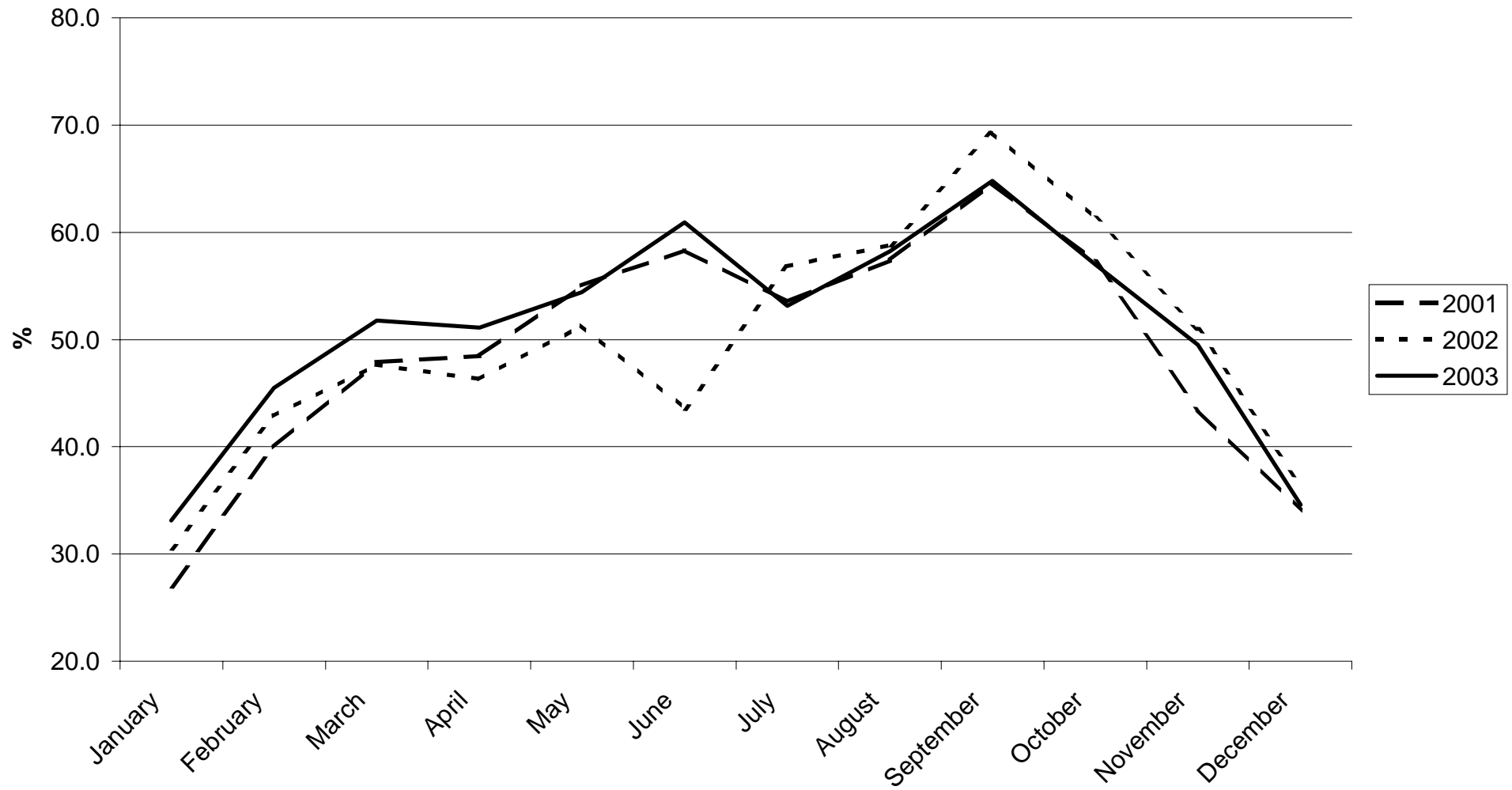


Table 6(a): Guest Nights Sold/Offered, % Sleeper Occupancy, all hotels 1977 -1980

TOURIST ARRIVALS

MONTH	GNS (000's)				GNO (000's)				% SLEEPER OCCUPANCY			
	1977	1978	1979	1980	1977	1978	1979	1980	1977	1978	1979	1980
JANUARY	6	6	8	10	44	45	45	45	13.2	14.4	18.0	22.2
FEBRUARY	13	10	11	11	40	40	42	42	31.0	24.1	25.3	26.4
MARCH	15	13	14	17	46	45	47	46	32.1	28.7	30.4	36.4
APRIL	12	18	15	17	44	44	46	47	27.7	39.5	31.3	37.1
MAY	16	19	21	17	45	46	47	48	34.3	42.3	44.3	35.9
JUNE	19	26	27	22	44	45	47	47	44.1	58.0	57.4	46.3
JULY	20	27	30	23	43	46	48	48	45.5	59.1	62.7	46.7
AUGUST	22	27	30	28	43	45	48	47	52.0	59.6	63.4	59.3
SEPTEMBER	18	26	34	25	44	46	47	47	42.1	57.0	72.3	53.6
OCTOBER	16	22	27	21	46	47	47	46	35.2	47.6	57.4	45.7
NOVEMBER	9	15	13	11	44	44	47	44	21.4	33.9	27.1	25.1
DECEMBER	9	10	9	8	45	45	48	44	19.3	23.2	19.5	19.2
TOTAL	175	219	239	210	528	538	559	551	33.1	40.9	42.8	38.2

Note: Yearly totals have been rounded off and need not necessarily equal the sum of the rounded-off monthly figures.

Table 6(b): Guest Nights Sold/Offered, % Sleeper Occupancy, all hotels 1981 -1984

TOURIST ARRIVALS

MONTH	GNS (000's)				GNO (000's)				% SLEEPER OCCUPANCY			
	1981	1982	1983	1984	1981	1982	1983	1984	1981	1982	1983	1984
JANUARY	8	7	7	7	44	43	45	46	18.0	15.3	15.5	15.0
FEBRUARY	9	10	8	8	40	40	41	43	21.4	24.8	20.7	19.4
MARCH	13	13	11	12	44	44	46	47	30.4	30.4	24.7	24.6
APRIL	14	16	10	13	44	44	45	45	31.1	36.1	23.4	28.4
MAY	13	16	14	15	44	45	46	46	30.4	35.2	29.4	33.2
JUNE	14	19	18	18	42	45	45	45	32.7	42.2	38.7	40.6
JULY	12	19	16	18	42	46	47	45	28.5	40.5	33.6	40.0
AUGUST	15	18	19	20	43	45	47	47	34.6	40.2	41.9	42.0
SEPTEMBER	16	16	19	22	43	43	46	44	37.2	43.4	41.7	50.2
OCTOBER	15	14	14	19	47	45	47	46	32.1	29.9	30.5	41.0
NOVEMBER	10	9	10	11	42	44	45	45	24.4	21.4	21.2	24.6
DECEMBER	8	8	9	8	44	45	46	47	18.0	18.3	18.4	17.4
TOTAL	147	165	155	171	519	529	546	546	28.3	31.1	28.4	31.3

Note: Yearly totals have been rounded off and need not necessarily equal the sum of the rounded-off monthly figures.

Table 6(c): Guest Nights Sold/Offered, % Sleeper Occupancy, all hotels 1985 -1988

TOURIST ARRIVALS

MONTH	GNS (000's)				GNO (000's)				% SLEEPER OCCUPANCY			
	1985	1986	1987	1988	1985	1986	1987	1988	1985	1986	1987	1988
JANUARY	8	10	15	13	45	43	46	46	16.5	22.1	33.6	27.5
FEBRUARY	14	12	15	14	41	38	42	44	33.8	31.0	34.8	32.2
MARCH	19	16	21	19	46	43	46	48	42.2	38.1	46.3	39.8
APRIL	18	13	19	20	45	42	43	45	40.2	30.7	44.9	44.8
MAY	18	19	18	19	47	45	45	47	39.4	41.9	38.6	40.3
JUNE	24	23	16	20	45	43	44	47	52.9	52.8	36.9	43.5
JULY	23	18	15	19	48	44	45	48	47.5	41.0	34.3	39.2
AUGUST	27	21	19	17	48	46	45	48	57.0	46.3	42.5	34.5
SEPTEMBER	26	21	22	17	46	44	45	44	56.7	48.1	49.7	37.8
OCTOBER	19	20	21	17	48	45	44	46	40.2	45.3	46.4	37.9
NOVEMBER	13	18	18	14	46	43	44	43	28.4	41.7	41.8	32.5
DECEMBER	9	12	14	11	47	44	46	45	18.8	27.5	29.8	24.3
TOTAL	218	203	213	200	552	520	535	551	39.6	38.6	40.0	36.2

Note: Yearly totals have been rounded off and need not necessarily equal the sum of the rounded-off monthly figures.

Table 6(d): Guest Nights Sold/Offered, % Sleeper Occupancy, all hotels 1989 -1992

TOURIST ARRIVALS

MONTH	GNS (000's)				GNO (000's)				% SLEEPER OCCUPANCY			
	1989	1990	1991	1992	1989	1990	1991	1992	1989	1990	1991	1992
JANUARY	10	8	7	5	42	37	40	42	23.7	22.7	17.7	12.9
FEBRUARY	13	10	8	6	40	37	37	41	33.4	27.1	20.2	15.4
MARCH	15	13	8	9	42	42	44	46	36.2	31.0	19.1	19.3
APRIL	16	14	9	9	42	41	41	42	37.0	34.0	21.9	21.7
MAY	12	12	10	9	44	42	41	43	27.9	29.4	23.3	20.7
JUNE	14	10	8	10	43	39	44	47	32.7	24.3	19.4	22.0
JULY	13	12	10	10	43	42	43	45	30.6	27.4	23.2	21.3
AUGUST	13	10	8	10	43	41	40	44	30.6	23.1	21.3	22.0
SEPTEMBER	12	12	8	9	42	41	44	41	29.8	30.0	18.2	22.7
OCTOBER	14	11	10	9	40	40	43	42	34.0	27.8	23.3	20.8
NOVEMBER	11	8	7	6	38	40	41	32	27.6	19.5	16.4	20.1
DECEMBER	9	8	6	6	42	39	45	33	21.7	20.9	12.9	17.5
TOTAL	152	128	99	98	501	481	502	497	30.4	26.5	19.7	19.8

Note: Yearly totals have been rounded off and need not necessarily equal the sum of the rounded-off monthly figures.

Table 6(e): Guest Nights Sold/Offered, % Sleeper Occupancy, all hotels 1993 -1996

TOURIST ARRIVALS

MONTH	GNS (000's)				GNO (000's)				% SLEEPER OCCUPANCY			
	1993	1994	1995	1996	1993	1994	1995	1996	1993	1994	1995	1996
JANUARY	4	7	5	5	33	34	32	32	12.4	19.5	15.1	16.4
FEBRUARY	5	6	7	7	30	30	28	30	17.7	21.1	25.8	22.8
MARCH	8	8	8	9	33	33	31	32	23.0	24.5	26.4	26.7
APRIL	8	9	10	10	32	31	25	31	25.2	27.1	38.1	30.9
MAY	10	10	9	10	34	35	31	32	28.5	28.5	30.8	30.9
JUNE	10	9	11	9	32	33	30	30	32.7	28.3	37.2	30.5
JULY	8	10	11	9	32	35	32	31	26.2	28.7	36.2	29.3
AUGUST	10	8	11	10	33	35	32	31	30.5	25.6	34.8	32.0
SEPTEMBER	12	12	14	10	32	33	31	31	36.8	35.2	45.6	34.3
OCTOBER	11	11	11	10	34	35	32	31	33.2	30.4	34.1	30.9
NOVEMBER	9	7	7	7	32	33	31	30	27.8	20.6	23.8	21.5
DECEMBER	7	6	7	6	33	34	32	31	21.8	18.9	21.8	20.7
TOTAL	103	103	113	101	391	401	369	372	26.4	25.8	30.7	27.2

Note: Yearly totals have been rounded off and need not necessarily equal the sum of the rounded-off monthly figures.

Table 6(f): Guest Nights Sold/Offered, % Sleeper Occupancy, all hotels 1997 -2000

TOURIST ARRIVALS

MONTH	GNS (000's)				GNO (000's)				% SLEEPER OCCUPANCY			
	1997	1998	1999	2000	1997	1998	1999	2000	1997	1998	1999	2000
JANUARY	5	4	5	4	31	30	29	31	15.2	14.4	17.2	13.0
FEBRUARY	6	5	6	6	29	25	26	29	22.3	21.4	21.8	20.0
MARCH	7	7	8	8	31	28	29	31	21.3	25.8	27.7	25.9
APRIL	7	7	8	9	31	26	29	30	23.9	28.8	27.3	30.8
MAY	10	8	9	12	32	27	29	31	29.9	30.6	30.0	39.1
JUNE	9	9	9	11	30	28	29	30	28.9	30.5	31.4	36.6
JULY	9	8	8	10	31	29	29	31	28.6	28.4	27.6	33.4
AUGUST	11	10	10	12	31	29	29	31	34.5	36.5	35.2	37.6
SEPTEMBER	11	12	10	14	31	28	29	31	34.8	41.5	36.2	44.3
OCTOBER	9	10	11	10	31	29	31	31	28.3	34.6	34.3	31.6
NOVEMBER	6	8	9	8	31	28	30	30	20.9	27.1	28.8	26.7
DECEMBER	6	6	5	7	31	29	31	31	18.9	19.5	17.3	21.6
TOTAL	95	95	98	111	370	335	351	368	25.6	28.2	27.9	30.1

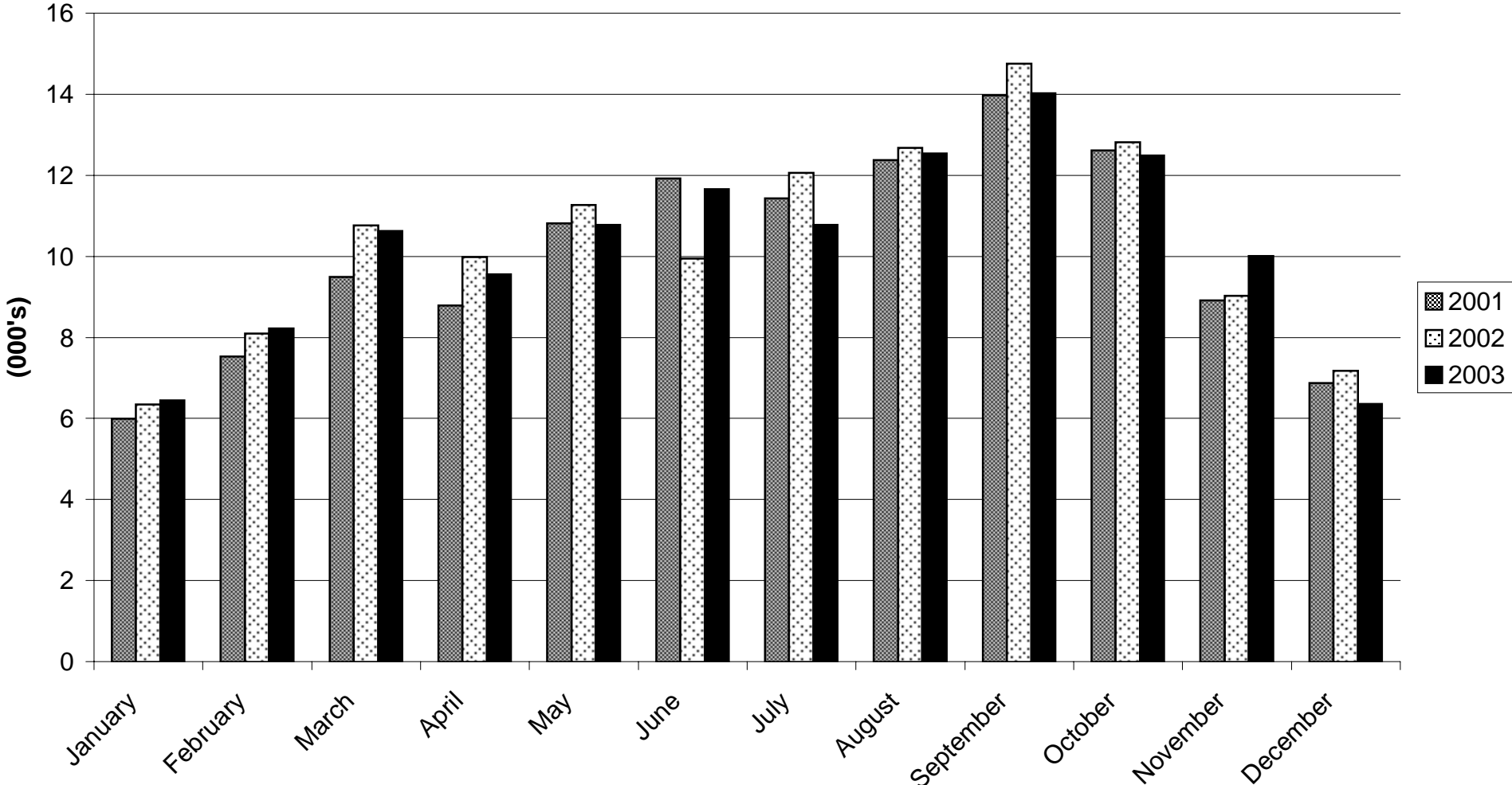
Note: Yearly totals have been rounded off and need not necessarily equal the sum of the rounded-off monthly figures.

Table 6(g): TOURIST ARRIVALS - Guest Nights Sold/Offered, % Sleeper Occupancy, all hotels 2001 - 2003

MONTH	GUEST NIGHTS SOLD (000's)			GUEST NIGHTS OFFERED (000's)			% SLEEPER OCCUPANCY		
	2001	2002	2003	2001	2002	2003	2001	2002	2003
JANUARY	6	6	6	31	31	31	19.3	20.4	20.6
FEBRUARY	8	8	8	28	28	28	26.9	28.8	29.2
MARCH	9	11	11	31	31	31	30.7	34.5	34.0
APRIL	9	10	10	30	30	30	29.1	33.0	31.5
MAY	11	11	11	31	31	31	34.9	36.5	34.5
JUNE	12	10	12	30	30	30	39.5	33.0	38.5
JULY	11	12	11	31	31	31	37.0	38.7	34.8
AUGUST	12	13	13	31	31	31	40.0	40.7	40.4
SEPTEMBER	14	15	14	30	30	30	46.3	48.7	46.5
OCTOBER	13	13	12	31	31	31	40.6	40.9	40.0
NOVEMBER	9	9	10	30	30	30	29.6	29.8	33.2
DECEMBER	7	7	6	31	31	31	22.1	22.9	20.9
TOTAL	121	125	123	366	367	367	33.0	34.0	33.7

Note: Yearly totals have been rounded off and need not necessarily equal the sum of the rounded-off monthly figures.

GUEST NIGHTS SOLD, TOURIST ARRIVALS, 2001 - 2003



% SLEEPER OCCUPANCY, TOURIST ARRIVALS, 2001- 2003

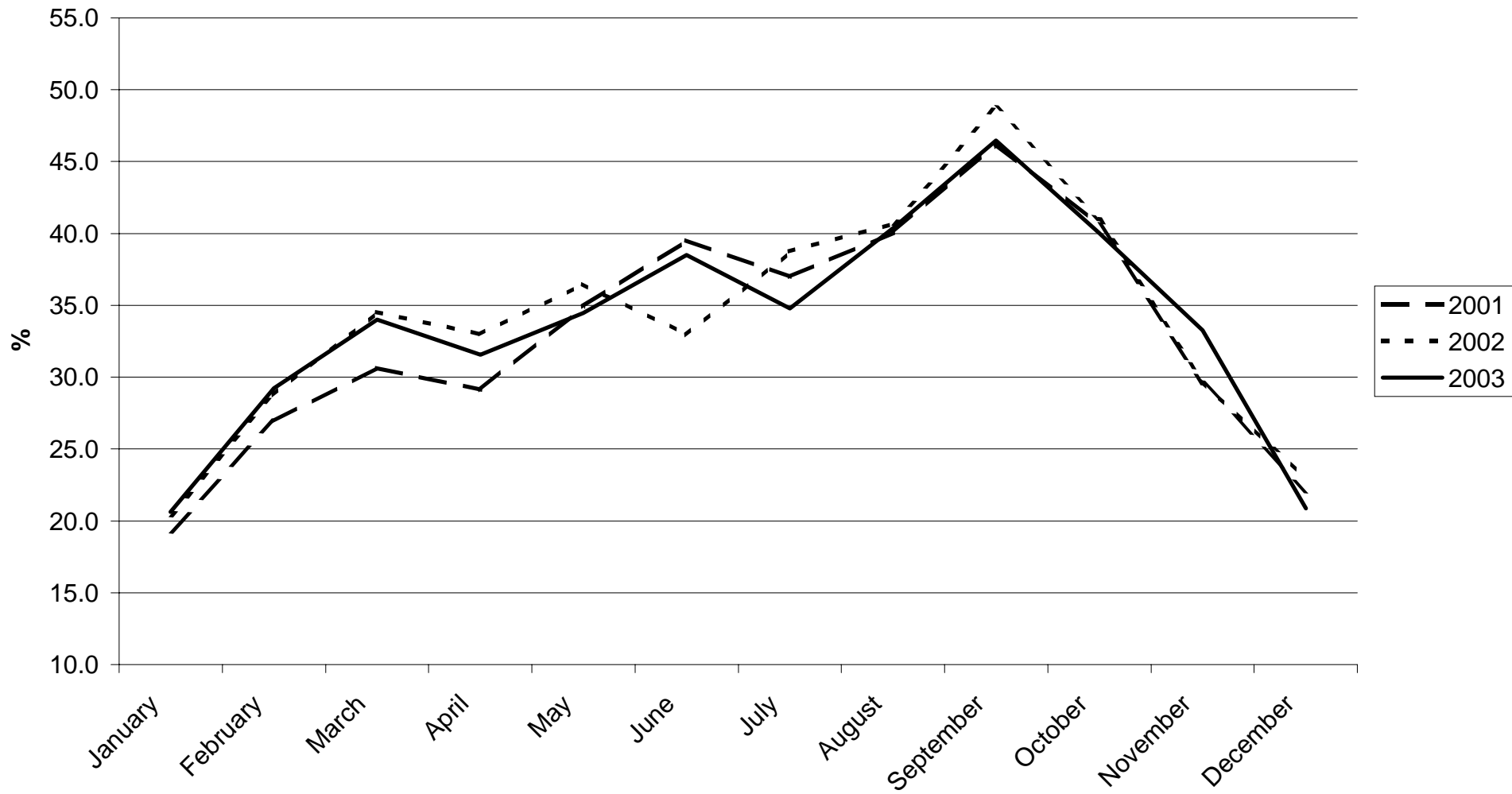


Table 7(a): Average Length of Stay per person (nights), all hotels 1977 - 2003

ALL ARRIVALS

YEAR	JAN	FEB	MAR	APR	MAY	JUN	JUL	AUG	SEP	OCT	NOV	DEC	TOTAL
1977	6.4	6.6	6.3	6.0	6.1	7.1	7.1	8.0	8.2	7.1	4.8	5.2	6.6
1978	4.8	5.1	5.2	6.4	6.1	7.9	8.8	8.0	7.6	6.3	5.0	5.7	6.6
1979	5.0	4.5	5.0	6.2	6.2	8.0	7.7	7.9	8.3	7.5	5.6	5.2	6.6
1980	4.5	4.5	5.8	6.5	5.2	6.5	7.6	7.9	7.8	6.4	5.2	5.3	6.2
1981	5.1	4.9	5.2	6.0	5.7	6.4	5.5	5.9	5.8	5.8	5.5	5.1	5.6
1982	5.6	5.6	5.1	6.5	6.3	7.6	8.2	6.9	6.7	6.3	5.3	5.2	6.4
1983	5.3	5.0	6.0	5.4	5.8	8.3	6.4	7.9	7.0	7.0	5.4	5.4	6.3
1984	5.3	5.2	5.9	6.2	6.1	8.0	6.8	7.4	7.7	6.1	4.9	5.1	6.3
1985	4.3	3.9	5.1	5.5	5.1	6.7	5.3	6.0	5.8	5.2	3.7	3.6	5.1
1986	4.3	3.7	4.6	4.0	4.5	5.7	5.0	5.2	5.2	5.3	4.8	3.7	4.7
1987	4.7	4.0	4.2	3.9	4.4	4.2	4.6	5.1	4.7	4.1	4.0	3.7	4.2
1988	3.6	4.1	4.1	4.3	4.3	4.9	5.0	4.6	4.6	5.2	3.8	4.6	4.4
1989	4.4	4.2	4.2	4.3	4.0	3.7	3.0	3.3	2.6	2.4	2.2	2.2	3.2
1990	3.3	3.4	2.4	2.7	3.5	2.8	2.9	3.2	3.1	3.6	3.0	3.3	3.0
1991	3.5	3.8	4.3	3.9	4.0	5.0	4.2	4.7	4.0	3.9	4.8	3.9	4.1
1992	3.7	3.1	4.0	3.8	3.9	4.0	4.2	3.9	3.9	3.7	3.7	3.7	3.8
1993	3.7	3.8	4.1	4.1	4.1	4.3	4.1	4.4	4.1	3.8	3.6	4	4.0
1994	4.0	4.0	4.0	4.0	3.8	4.0	4.4	3.9	3.8	3.9	3.7	3.8	3.9
1995	3.0	3.6	3.1	3.1	3.3	3.6	3.3	3.4	3.2	3.2	2.8	2.7	3.2
1996	2.8	2.6	2.9	3.0	3.2	3.3	3.2	3.4	3.4	3.1	2.9	2.6	3.1
1997	3.1	3.0	3.1	2.9	3.0	2.9	3.2	2.9	2.9	3.5	2.6	2.7	3.0
1998	2.5	3.2	3.5	3.2	3.3	3.7	3.7	3.7	4.2	3.5	3.5	3.3	3.5
1999	3.3	3.5	3.7	3.5	3.6	3.8	3.8	3.8	3.9	3.6	3.8	3.3	3.7
2000	2.9	3.2	3.0	3.2	3.9	3.5	3.9	3.5	3.4	3.1	3.0	3.2	3.4
2001	2.7	3.4	3.3	3.4	3.4	3.5	3.3	3.4	3.6	3.5	3.5	3.1	3.3
2002	3.0	2.9	3.2	3.1	3.1	3.0	3.1	3.1	3.2	3.1	3.0	2.8	3.1
2003	2.8	2.9	3.0	3.1	3.0	3.1	3.1	3.1	3.4	3.2	2.8	2.7	3.0

AVERAGE LENGTH OF STAY, ALL ARRIVALS, 2001 - 2003

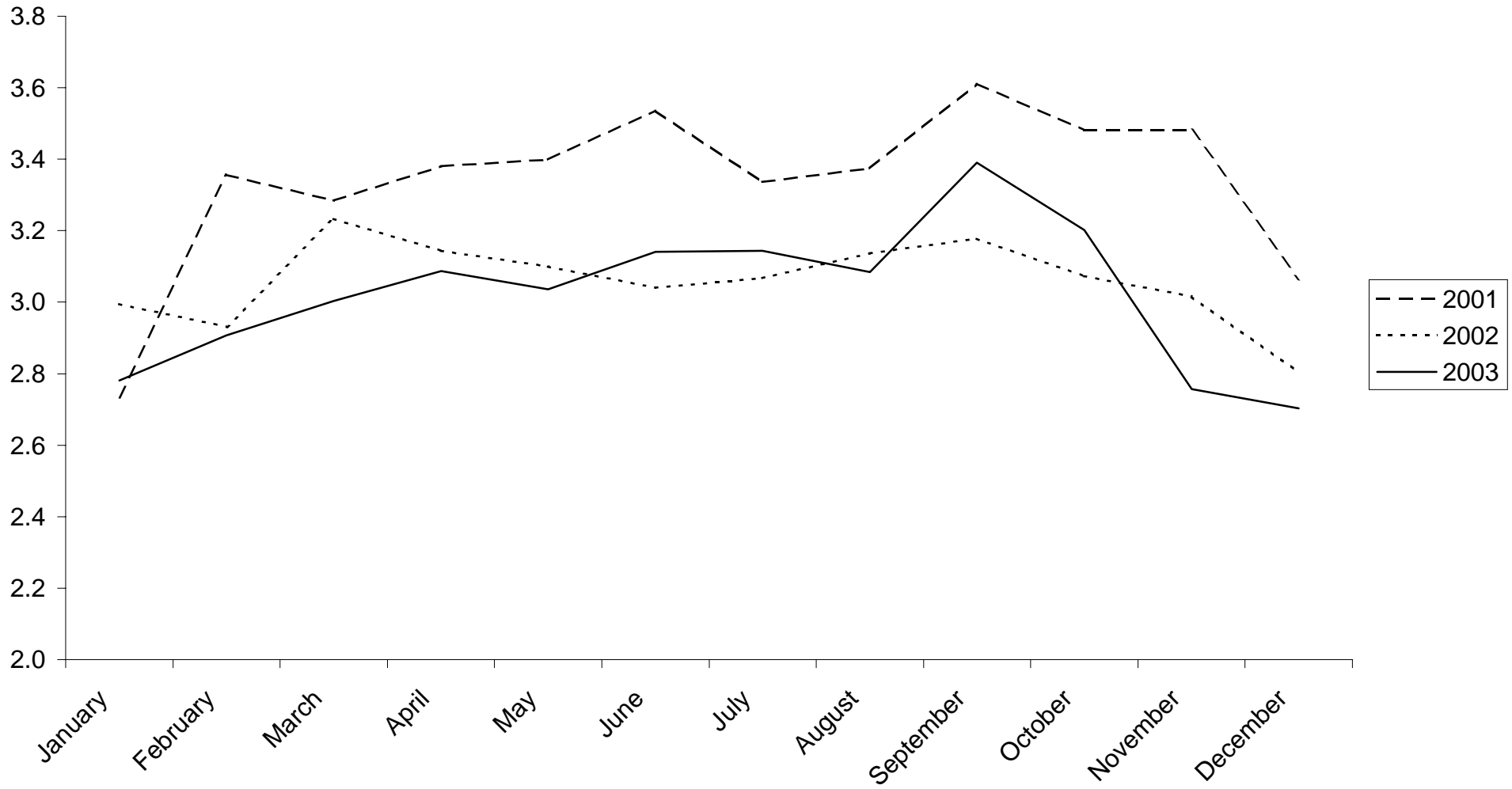


Table 7(b): Average Length of Stay per person (nights), all hotels 1977 - 2003

TOURIST ARRIVALS

YEAR	JAN	FEB	MAR	APR	MAY	JUN	JUL	AUG	SEP	OCT	NOV	DEC	TOTAL
1977	5.9	7.0	7.2	6.5	6.8	7.3	7.2	8.0	7.9	6.7	5.6	5.4	6.9
1978	5.0	5.1	5.8	7.1	6.7	7.6	9.4	8.8	8.1	6.8	5.4	6.2	7.1
1979	4.9	4.5	5.4	6.3	6.1	7.9	7.7	8.1	8.8	7.2	5.0	5.2	6.8
1980	4.3	4.3	5.5	6.0	5.4	8.0	7.7	8.2	7.5	6.7	5.5	5.6	6.3
1981	5.0	4.1	5.1	5.8	6.3	6.1	5.6	6.4	6.4	5.9	5.7	5.0	5.6
1982	6.1	5.4	5.5	7.0	6.1	8.2	8.0	8.2	10.1	6.7	5.6	5.4	6.7
1983	6.6	5.4	6.2	5.7	6.6	8.4	7.8	9.2	7.7	7.5	5.8	6.3	7.1
1984	6.4	6.3	6.6	8.0	7.8	8.8	8.4	8.7	8.5	7.1	5.7	6.6	7.5
1985	7.3	5.2	5.4	5.4	4.9	6.8	6.0	6.3	6.5	5.5	3.7	3.6	5.5
1986	4.0	4.2	4.3	3.7	4.7	5.8	5.2	5.3	4.8	4.9	4.2	4.1	4.6
1987	4.2	4.1	4.3	3.9	4.6	4.6	4.3	4.6	4.6	4.3	3.8	4.0	4.3
1988	3.9	3.9	4.0	4.3	4.1	5.1	5.2	4.6	4.4	4.9	3.9	4.3	4.4
1989	4.2	3.8	3.7	3.8	3.5	3.4	3.3	3.2	2.8	2.6	2.4	2.6	3.2
1990	4.1	4.3	4.4	4.1	4.3	4.3	3.7	3.8	3.9	4.2	3.7	4.1	4.1
1991	3.8	3.9	3.6	4.3	4.0	4.1	4.0	3.5	3.3	3.9	4.2	3.4	3.8
1992	3.3	2.9	3.3	3.2	3.1	3.6	3.6	3.4	3.6	3.2	3.2	3.0	3.3
1993	2.7	3.5	3.7	3.8	3.8	4.4	3.8	4.1	4.1	3.9	3.8	3.8	3.8
1994	4.0	3.8	3.9	4.0	4.0	4.1	4.2	3.9	4.0	3.9	4.0	3.9	4.0
1995	3.1	3.3	3.4	3.4	3.6	4.2	3.5	3.6	3.4	3.4	3.0	2.8	3.4
1996	2.7	2.8	3.2	3.2	3.8	3.6	3.3	3.3	3.5	3.1	2.9	2.6	3.2
1997	3.2	3.3	3.5	3.4	3.4	3.3	3.2	3.2	3.5	3.1	3.2	3.0	3.3
1998	2.8	3.1	3.4	3.2	3.4	3.5	3.5	3.5	3.9	3.5	3.3	3.0	3.4
1999	3.0	3.4	3.5	3.4	3.5	3.6	3.6	3.6	3.9	3.6	3.8	3.2	3.5
2000	2.6	3.0	2.9	3.1	3.5	3.1	3.5	3.3	3.3	2.7	2.8	2.7	3.1
2001	2.6	3.2	3.0	2.9	3.1	3.5	3.1	3.0	3.4	3.3	2.6	2.6	3.1
2002	2.8	2.7	3.0	3.1	3.0	3.4	3.0	3.1	3.2	3.2	2.7	2.7	3.0
2003	2.8	2.9	3.0	2.9	3.0	3.2	3.1	3.1	3.5	3.2	2.8	2.4	3.0

AVERAGE LENGTH OF STAY, TOURIST ARRIVALS, 2001 - 2003

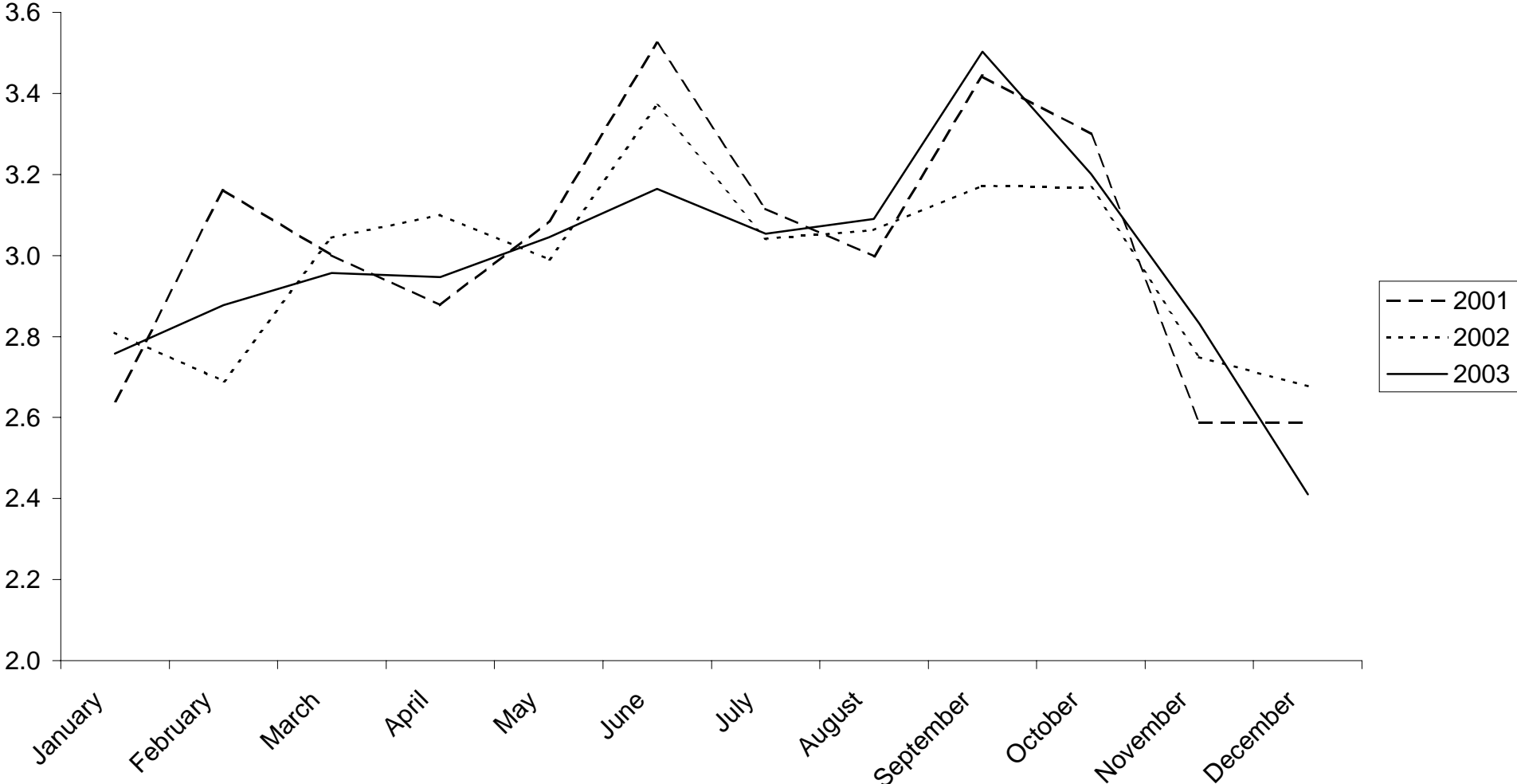
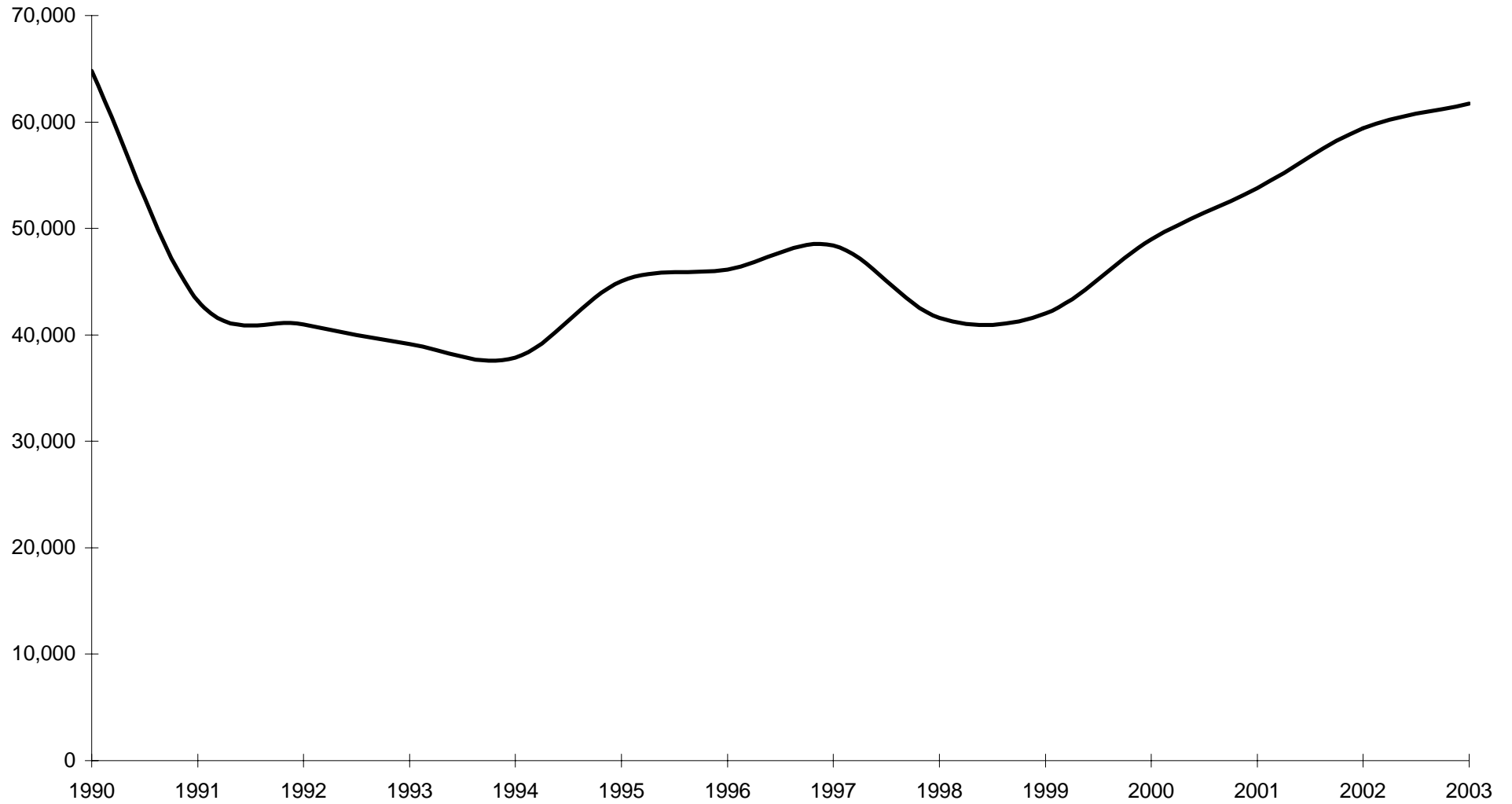


Table 8: Summary of Hotel Statistics, 1970 - 2003

YEAR	ARRIVALS IN HOTELS	SLEEPER NIGHTS	% OCCUPANCY	AV. LENGTH OF STAY (NIGHTS)
1970	41,774	231,785	48.8	5.5
1971	35,740	214,071	42.4	6.0
1972	33,359	234,228	51.5	7.0
1973	37,012	248,238	51.2	6.7
1974	39,758	271,225	49.5	6.8
1975	45,894	307,913	53.0	6.7
1976	34,933	244,804	43.1	7.0
1977	31,401	207,593	39.4	6.6
1978	39,102	257,295	47.8	6.6
1979	44,569	296,335	53.0	6.6
1980	41,308	255,862	46.5	6.2
1981	33,417	187,679	36.2	5.6
1982	34,896	223,429	42.2	6.4
1983	33,142	209,930	38.4	6.3
1984	35,690	225,873	41.3	6.3
1985	55,119	281,525	51.0	5.1
1986	56,525	266,223	51.3	4.6
1987	64,349	279,377	52.3	4.3
1988	64,942	286,295	52.0	4.4
1989	67,934	220,083	44.0	3.2
1990	64,793	196,516	40.8	3.0
1991	43,193	178,053	35.5	4.1
1992	40,986	156,947	31.6	3.8
1993	39,123	157,215	40.2	4.0
1994	37,851	149,292	37.2	3.9
1995	45,056	144,453	39.2	3.2
1996	46,142	140,596	37.8	3.1
1997	48,420	143,972	39.0	3.0
1998	41,616	144,538	43.1	3.5
1999	42,031	153,583	43.7	3.7
2000	48,949	164,232	44.6	3.4
2001	53,776	178,951	48.9	3.3
2002	59,417	182,444	49.7	3.1
2003	61,743	187,631	51.2	3.0

Source: 1970: Gibraltar Tourist Office
1971 to date: Statistics Office

ARRIVALS AT HOTELS, 1990 - 2003



AVERAGE LENGTH OF STAY, 1990 - 2003

