



GOVERNMENT OF GIBRALTAR

HOTEL OCCUPANCY

SURVEY

2002

STATISTICS OFFICE

PREFACE

The Statistics (Hotel Occupancy) Order 1971 requires that the Government Statistician prepares a report and summary of the findings of the Hotel Occupancy Survey to be laid before the House of Assembly.

This is the twenty-seventh such report and it contains a summary of the statistics collected for the years 1976 – 2002.

I must express my thanks to the hotels for their continued co-operation in the conduct of this survey.

GOVERNMENT STATISTICIAN

FEBRUARY 2003

- C O N T E N T S -

		<u>PAGE</u>
A.	Definitions and Notes	
B.	Tables	1 - 44
<u>LIST OF TABLES</u>		
Table 1	General Analysis, all hotels 1976 - 2002	1
Chart	All Arrivals at Hotels, 1976 - 2002	2
Chart	% Room Occupancy, All Arrivals, 1990 - 2002	3
Chart	Average Length of Stay, All Arrivals, 1976 - 2002	4
Table 2(a)	Room Nights Sold and Offered, all hotels 1996 - 2000 (All Arrivals)	5
Table 2(b)	Room Nights Sold and Offered, all hotels 2001 - 2002 (All Arrivals)	6
Chart	Room Nights Sold, All Arrivals, 1999 - 2002	7
Table 2 (c)	Room Nights Sold and Offered, all hotels 1996 - 2000 (Tourist Arrivals)	8
Table 2 (d)	Room Nights Sold and Offered, all hotels 2001 - 2002 (Tourist Arrivals)	9
Chart	Room Nights Sold, Tourist Arrivals, 1999 - 2002	10
Table 3(a)	Room Occupancy Rates, 1992 - 1996	11
Table 3(b)	Room Occupancy Rates, 1997 - 2002	12
Chart	Room Occupancy Rates, All Arrivals, 1999 - 2002	13
Chart	Room Occupancy Rates, Tourist Arrivals, 1999 - 2002	14
Table 4(a)	Number of Arrivals by Month, all hotels 1976 - 1982	15
Table 4(b)	Number of Arrivals by Month, all hotels 1983 - 1989	16
Table 4(c)	Number of Arrivals by Month, all hotels 1990 - 1996	17
Table 4(d)	Number of Arrivals by Month, all hotels 1997 - 2002	18
Chart	All Arrivals at Hotels, 1997 - 2002	19
Table 5(a)	Guest Nights Sold/Offered, % Sleeper Occupancy, all hotels 1976 - 1979 (All Arrivals)	20
Table 5(b)	Guest Nights Sold/Offered, % Sleeper Occupancy, all hotels 1980 - 1983 (All Arrivals)	21
Table 5(c)	Guest Nights Sold/Offered, % Sleeper Occupancy, all hotels 1984 - 1987 (All Arrivals)	22

- C O N T E N T S -

<u>LIST OF TABLES</u>		<u>PAGE</u>
Table 5(d)	Guest Nights Sold/Offered, % Sleeper Occupancy, all hotels 1988 - 1991 (All Arrivals)	23
Table 5(e)	Guest Nights Sold/Offered, % Sleeper Occupancy, all hotels 1992 - 1995 (All Arrivals)	24
Table 5(f)	Guest Nights Sold/Offered, % Sleeper Occupancy, all hotels 1996 - 1999 (All Arrivals)	25
Table 5(g)	Guest Nights Sold/Offered, % Sleeper Occupancy, all hotels 2000 - 2002 (All Arrivals)	26
Chart	Guest Nights Sold, All Arrivals, 2000 - 2002	27
Chart	Guest Nights Offered, All Arrivals, 2000 - 2002	28
Chart	% Sleeper Occupancy, All Arrivals, 2000 - 2002	29
Table 6(a)	Guest Nights Sold/Offered, % Sleeper Occupancy, all hotels 1976 - 1979 (Tourist Arrivals)	30
Table 6(b)	Guest Nights Sold/Offered, % Sleeper Occupancy, all hotels 1980 - 1983 (Tourist Arrivals)	31
Table 6(c)	Guest Nights Sold/Offered, % Sleeper Occupancy, all hotels 1984 - 1987 (Tourist Arrivals)	32
Table 6(d)	Guest Nights Sold/Offered, % Sleeper Occupancy, all hotels 1988 - 1991 (Tourist Arrivals)	33
Table 6(e)	Guest Nights Sold/Offered, % Sleeper Occupancy, all hotels 1992 - 1995 (Tourist Arrivals)	34
Table 6(f)	Guest Nights Sold/Offered, % Sleeper Occupancy, all hotels 1996 - 1998 (Tourist Arrivals)	35
Table 6(g)	Guest Nights Sold/Offered, % Sleeper Occupancy, all hotels 2000 - 2002 (Tourist Arrivals)	36
Chart	Guest Nights Sold, Tourist Arrivals, 2000 - 2002	37
Chart	% Sleeper Occupancy, Tourist Arrivals, 2000 - 2002	38
Table 7(a)	Average Length of Stay per person (nights), all hotels 1976 - 2002 (All Arrivals)	39
Chart	Average Length of Stay, All Arrivals, 2000 - 2002	40
Table 7(b)	Average Length of Stay per person (nights), all hotels 1976 - 2002 (Tourist Arrivals)	41
Chart	Average Length of Stay, Tourist Arrivals, 2000 - 2002	42
Table 8	Summary Of Hotel Statistics, 1969 - 2002	43
Chart	Arrivals at Hotels, 1989 - 2002	44
Chart	Average Length of Stay, 1998 - 2002	45

A. Definitions and Notes

- (a) Tourist: A tourist is a person who is primarily in Gibraltar for the purpose of a holiday. It is nevertheless up to the discretion of the individual hotels who to include under this category.
- (b) Guest Nights: Calculated on the basis of “one guest x one night”.
- (c) Sleeper Occupancy: Calculated as the percentage of guest-nights sold over guest-nights offered. It should be noted that this measure does not necessarily give an accurate indication of the ability of the hotel to accept more guests. e.g. one person staying in a room with two beds gives a 50% sleeper occupancy and a 100% room occupancy.
- (d) In interpreting the figures it should be noted that:
- The Continental Hotel is included as from January 1986.
 - The Sunrise Motel is included for the period January 1992 to December 1994.
 - As from September 1992, the Montarik Hotel is not included.
 - As from November 1992, the Gibraltar Beach Hotel is not included.
 - The Cannon Hotel is included with effect from July 1995.
- (e) Abbreviations: GNS - Guest Nights Sold, GNO - Guest Nights Offered.

B. Tables

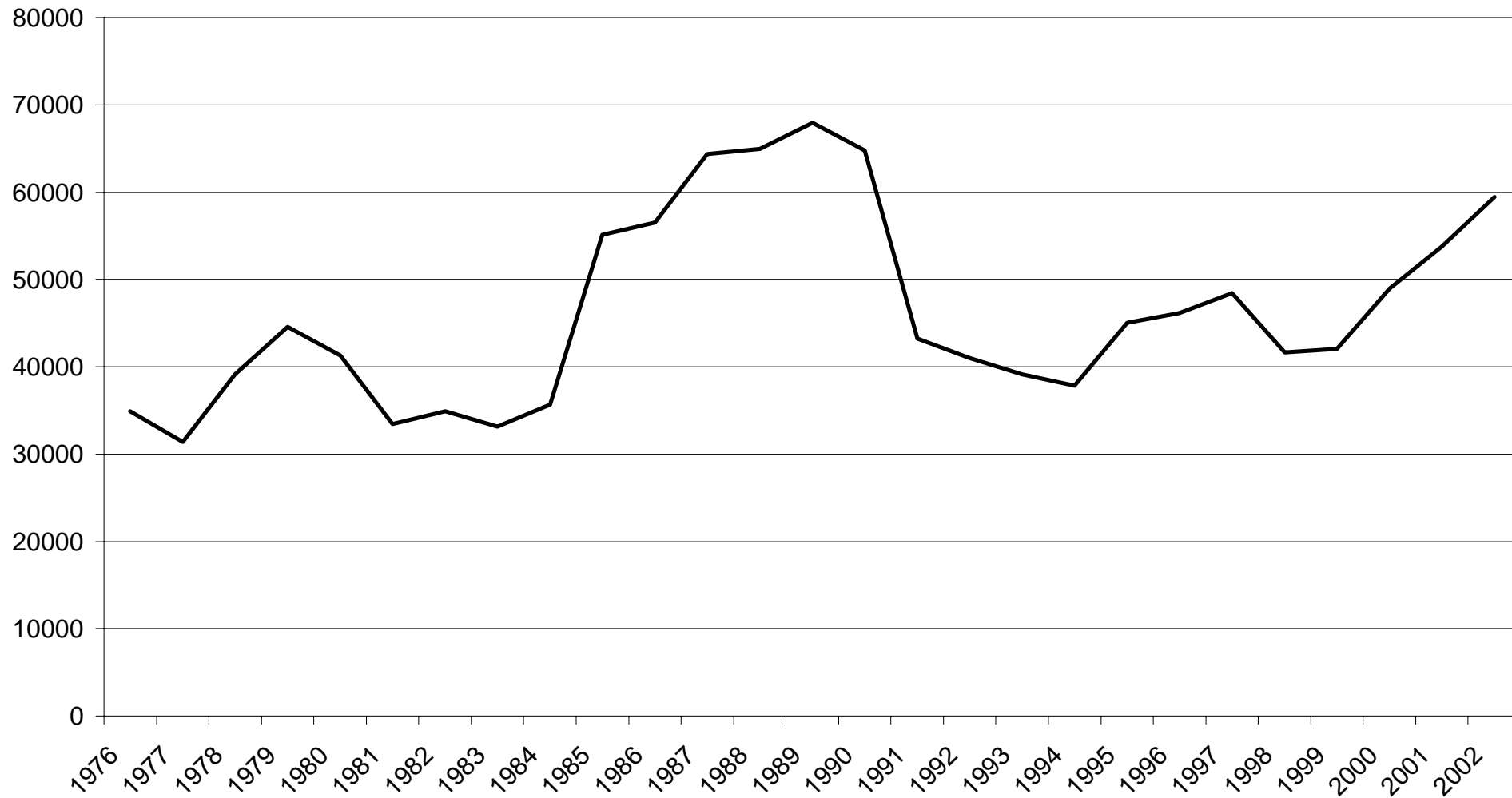
Table 1: General Analysis, All Hotels 1976 - 2002

YEAR	ALL ARRIVALS	RNO (00's)	RNS (00's) ALL	% ROOM OCCUPANCY ALL	GNO (000's)	GNS (000's) ALL	% SLEEPER OCCUPANCY ALL	AVERAGE LGTH. OF STAY ALL
1976	34933	n/a	n/a	n/a	563	245	43.5	7.0
1977	31402	n/a	n/a	n/a	526	208	39.4	6.6
1978	39102	n/a	n/a	n/a	539	257	47.8	6.6
1979	44569	n/a	n/a	n/a	559	296	53.0	6.6
1980	41308	n/a	n/a	n/a	551	256	46.5	6.2
1981	33417	n/a	n/a	n/a	519	188	36.2	5.6
1982	34896	n/a	n/a	n/a	529	223	42.2	6.4
1983	33142	n/a	n/a	n/a	546	210	38.4	6.3
1984	35690	n/a	n/a	n/a	546	226	41.3	6.3
1985	55119	n/a	n/a	n/a	552	282	51.0	5.1
1986	56525	n/a	n/a	n/a	519	266	51.3	4.6
1987	64349	n/a	n/a	n/a	535	278	52.3	4.3
1988	64942	n/a	n/a	61.3	551	286	52.0	4.4
1989	67934	n/a	n/a	53.3	501	220	44.0	3.2
1990	64793	n/a	n/a	51.3	481	197	40.8	3.0
1991	43193	n/a	n/a	50.6	502	178	35.5	4.1
1992	40986	2367	976	41.2	497	157	31.6	3.8
1993	39123	1946	941	48.4	391	157	40.2	4.0
1994	37851	1986	885	44.5	401	149	37.2	3.9
1995	45056	1919	884	46.1	369	144	39.2	3.2
1996	46142	1908	826	43.3	372	141	37.8	3.1
1997	48420	1904	900	47.3	370	144	39.0	3.0
1998	41616	1733	930	53.6	335	145	43.1	3.5
1999	42031	1792	991	55.3	351	154	43.7	3.7
2000	48949	1790	1054	58.9	368	164	44.6	3.4
2001	53776	1789	1149	64.2	366	179	48.9	3.3
2002	59417	1825	1176	64.4	367	182	49.7	3.1

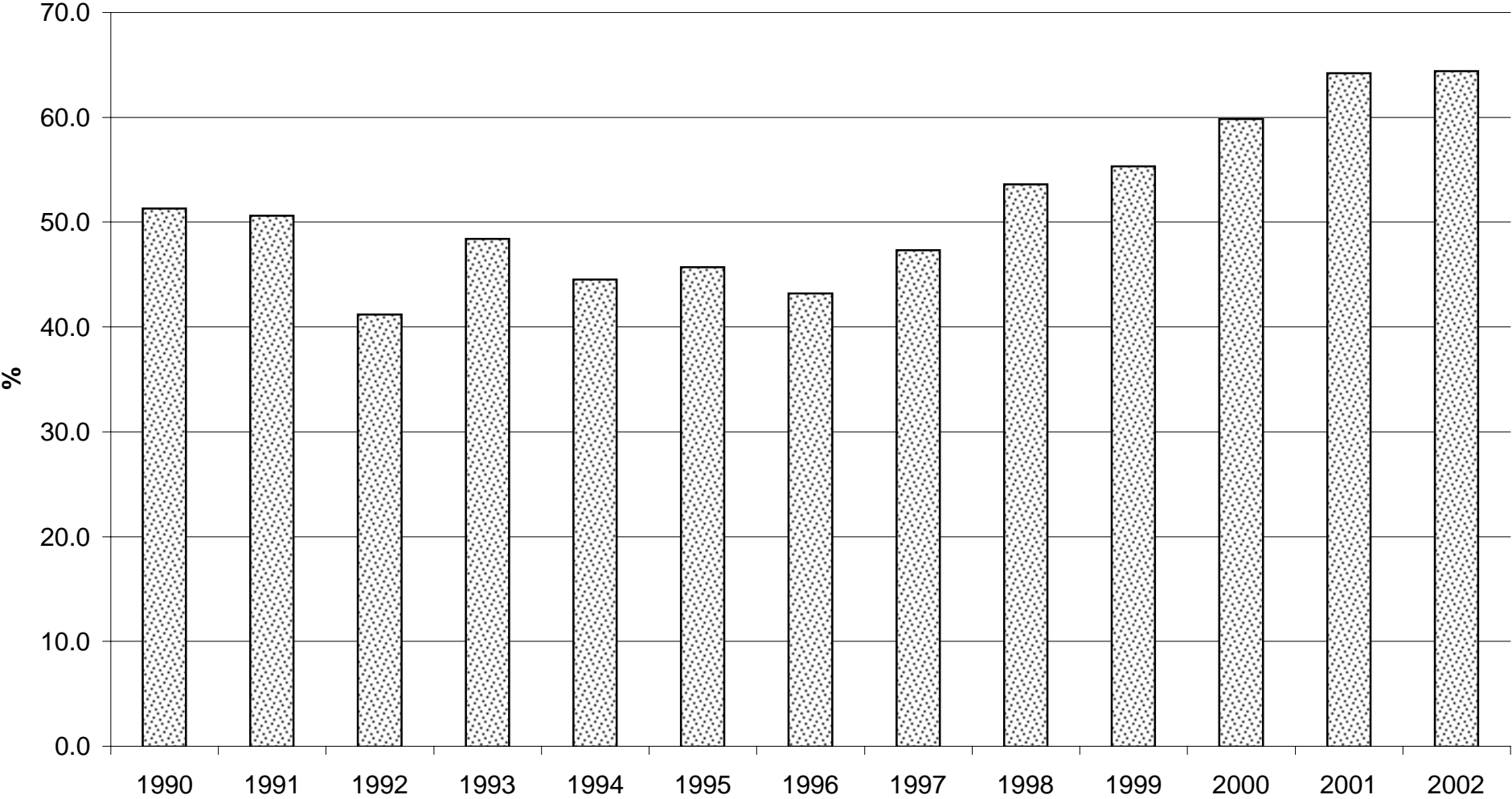
Notes:

1. RNO - Room Nights Offered.
2. RNS - Room nights Sold.
3. GNO - Guest Nights Offered.
4. GNS - Guest Nights Sold.
5. With effect from January 1992, hotels were required under the legislation to submit returns which included the % room occupancy figures. For the period 1988 to 1991, these figures were provided voluntarily by the hotels.
6. The RNO and RNS figures for 1995 and 1996 have been adjusted as result of a computer program malfunction in the cumulative total for those years. The corresponding occupancy rates have also been amended.

ALL ARRIVALS AT HOTELS, 1976 - 2002



% ROOM OCCUPANCY, ALL ARRIVALS, 1990 - 2002



AVERAGE LENGTH OF STAY, ALL ARRIVALS, 1976 - 2002

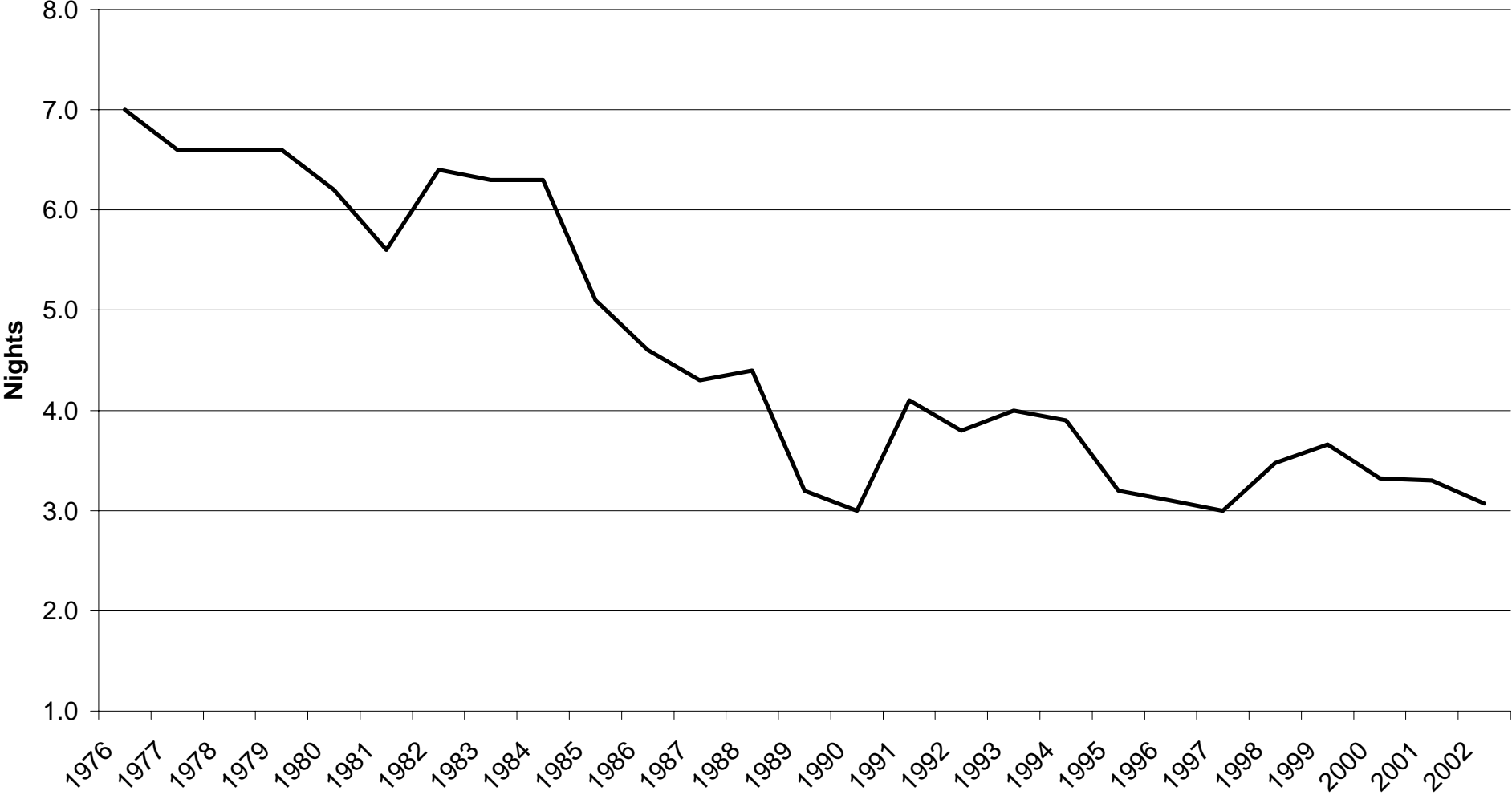


Table 2(a): Room Nights Sold and Offered, all hotels 1996 -2000

ALL ARRIVALS

MONTH	ROOM NIGHTS SOLD (00's)					ROOM NIGHTS OFFERED (00's)				
	1996	1997	1998	1999	2000	1996	1997	1998	1999	2000
JANUARY	49	46	52	59	46	162	160	150	152	150
FEBRUARY	53	59	58	60	59	154	149	130	137	141
MARCH	70	72	72	89	78	165	173	150	152	151
APRIL	71	68	69	84	86	160	158	134	148	147
MAY	79	84	87	83	125	161	163	141	152	152
JUNE	80	82	82	89	106	154	158	140	149	148
JULY	65	78	80	83	96	158	162	144	152	151
AUGUST	71	88	94	99	94	159	162	144	152	151
SEPTEMBER	93	99	103	103	119	158	158	148	148	148
OCTOBER	79	90	90	98	98	160	161	152	151	151
NOVEMBER	58	80	82	91	78	158	159	148	147	147
DECEMBER	58	59	61	53	68	160	151	152	151	151
TOTAL	826	900	930	991	1054	1908	1904	1733	1792	1790

Note: Yearly totals have been rounded off and need not necessarily equal the sum of the rounded-off monthly figures. The yearly total for 1996 has been adjusted as a result of a program malfunction in the cumulative total for that year.

Table 2(b): Room Nights Sold and Offered, all hotels 2001 - 2002

ALL ARRIVALS

MONTH	ROOM NIGHTS SOLD (00's)		ROOM NIGHTS OFFERED (00's)	
	2001	2002	2001	2002
JANUARY	67	64	151	152
FEBRUARY	76	78	137	138
MARCH	102	95	151	152
APRIL	97	91	147	148
MAY	108	91	151	151
JUNE	111	106	147	148
JULY	101	112	151	157
AUGUST	100	106	151	158
SEPTEMBER	120	128	148	153
OCTOBER	112	115	152	158
NOVEMBER	87	102	148	153
DECEMBER	68	76	152	158
TOTAL	1149	1176	1789	1825

Note: Yearly totals have been rounded off and need not necessarily equal the sum of the rounded-off monthly figures.

ROOM NIGHTS SOLD, ALL ARRIVALS, 1999 - 2002

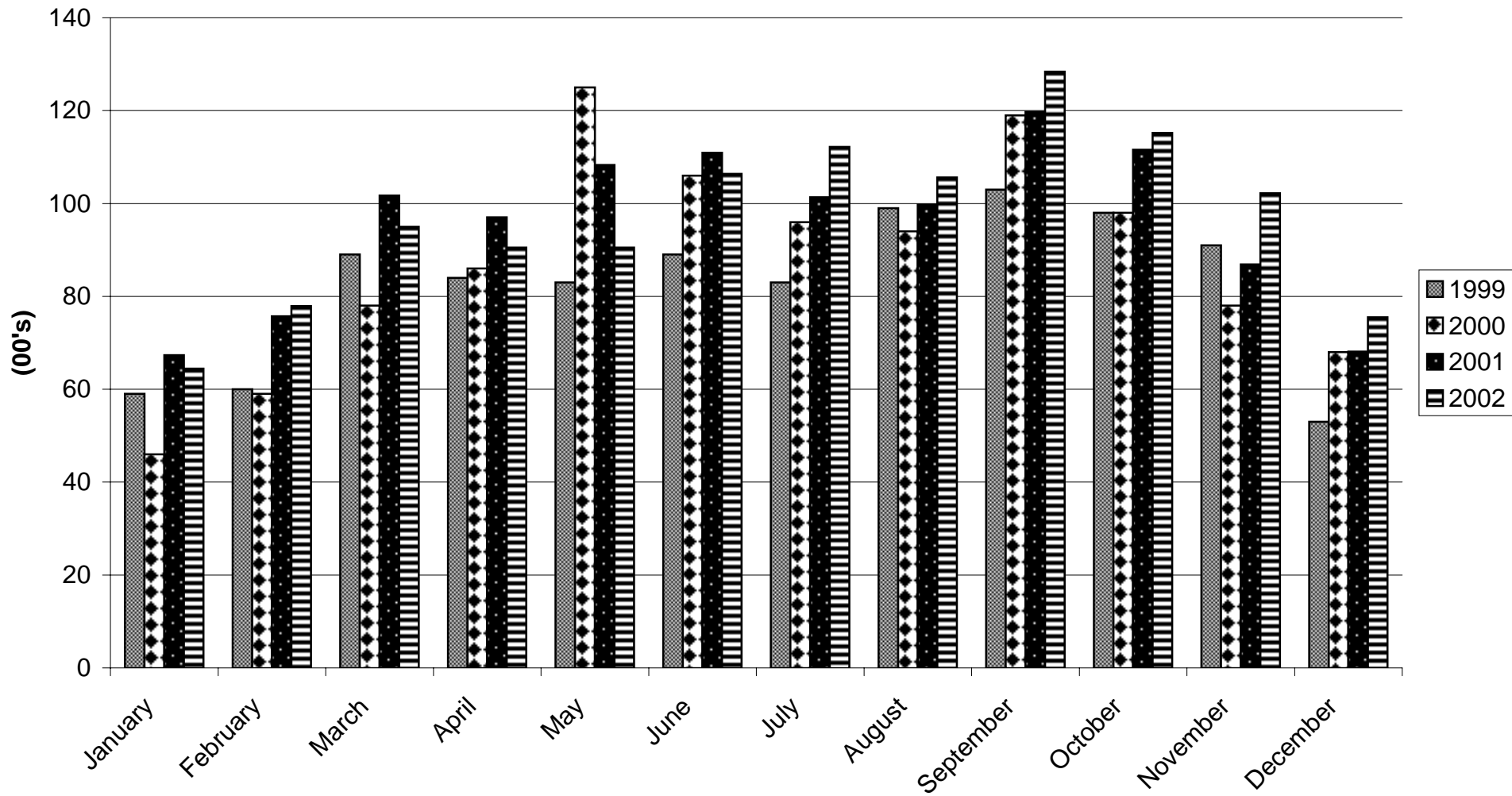


Table 2(c): Room Nights Sold and Offered, all hotels 1996 -2000

TOURIST ARRIVALS

MONTH	ROOM NIGHTS SOLD (00's)					ROOM NIGHTS OFFERED (00's)				
	1996	1997	1998	1999	2000	1996	1997	1998	1999	2000
JANUARY	27	24	35	33	30	162	160	150	152	150
FEBRUARY	34	35	38	37	35	154	149	130	137	141
MARCH	44	45	54	52	50	165	173	150	152	151
APRIL	48	40	45	49	56	160	158	134	148	147
MAY	51	52	57	52	77	161	163	141	152	152
JUNE	50	47	53	55	66	154	158	140	149	148
JULY	43	44	50	50	60	158	162	144	152	151
AUGUST	47	49	61	61	65	159	162	144	152	151
SEPTEMBER	54	55	70	65	80	158	158	148	148	148
OCTOBER	48	45	60	63	66	160	161	152	151	151
NOVEMBER	35	40	48	52	50	158	159	148	147	147
DECEMBER	33	30	35	34	41	160	151	152	151	151
TOTAL	515	500	605	602	675	1908	1904	1733	1792	1790

Note: Yearly totals have been rounded off and need not necessarily equal the sum of the rounded-off monthly figures. The yearly total for 1996 has been adjusted as a result of a program malfunction in the cumulative total for that year.

Table 2(d): Room Nights Sold and Offered, all hotels 2001 - 2002

TOURIST ARRIVALS

MONTH	ROOM NIGHTS SOLD (00's)		ROOM NIGHTS OFFERED (00's)	
	2001	2002	2001	2002
JANUARY	40	39	151	152
FEBRUARY	46	48	137	138
MARCH	60	66	151	152
APRIL	53	61	147	148
MAY	64	69	151	151
JUNE	71	60	147	148
JULY	67	74	151	157
AUGUST	68	71	151	158
SEPTEMBER	82	87	148	153
OCTOBER	74	71	152	158
NOVEMBER	55	56	148	153
DECEMBER	41	45	152	158
TOTAL	721	747	1789	1825

Note: Yearly totals have been rounded off and need not necessarily equal the sum of the rounded-off monthly figures.

ROOM NIGHTS SOLD, TOURIST ARRIVALS, 1999 - 2002

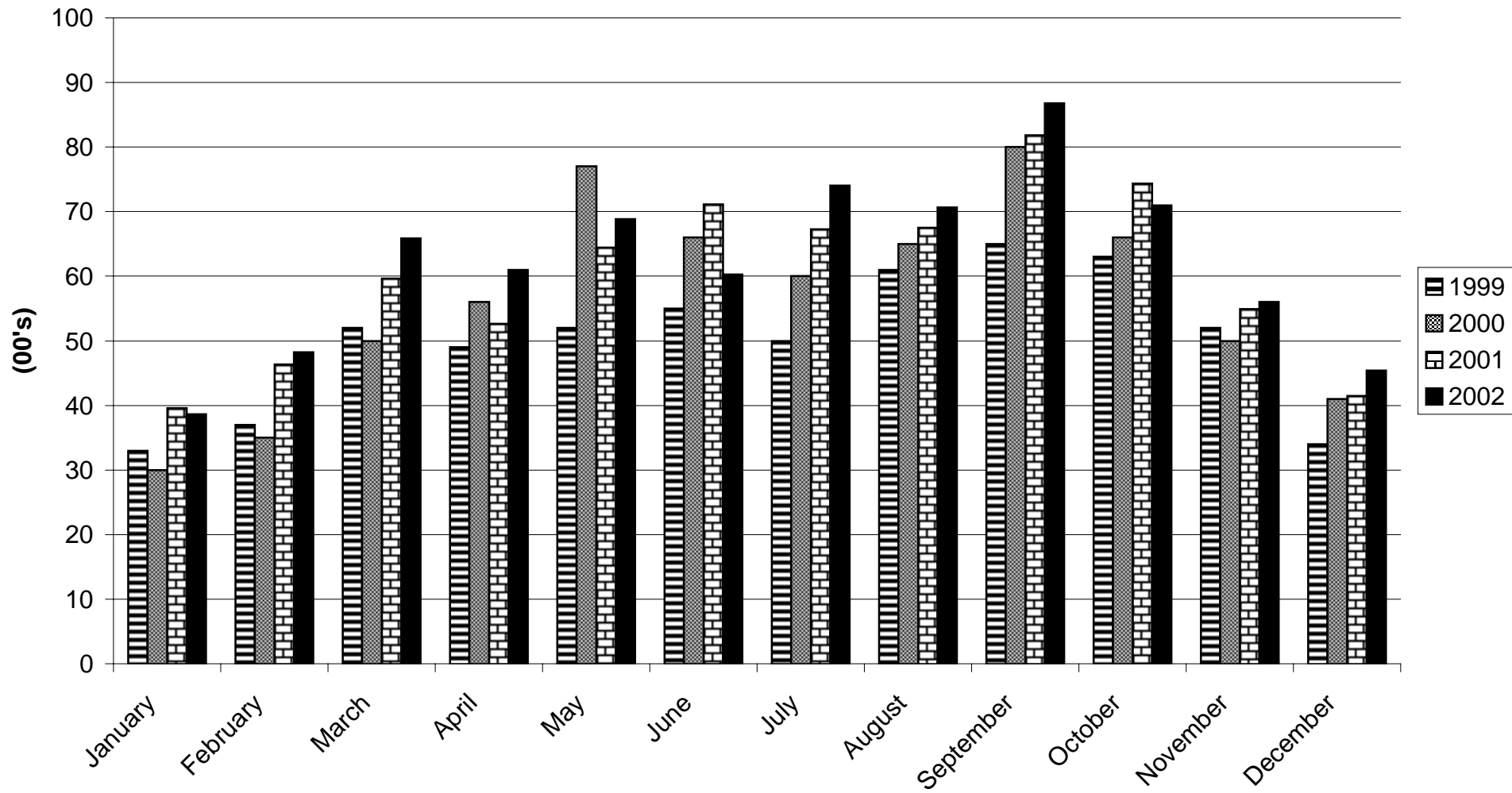


Table 3(a): Room Occupancy Rates, 1992 -1996

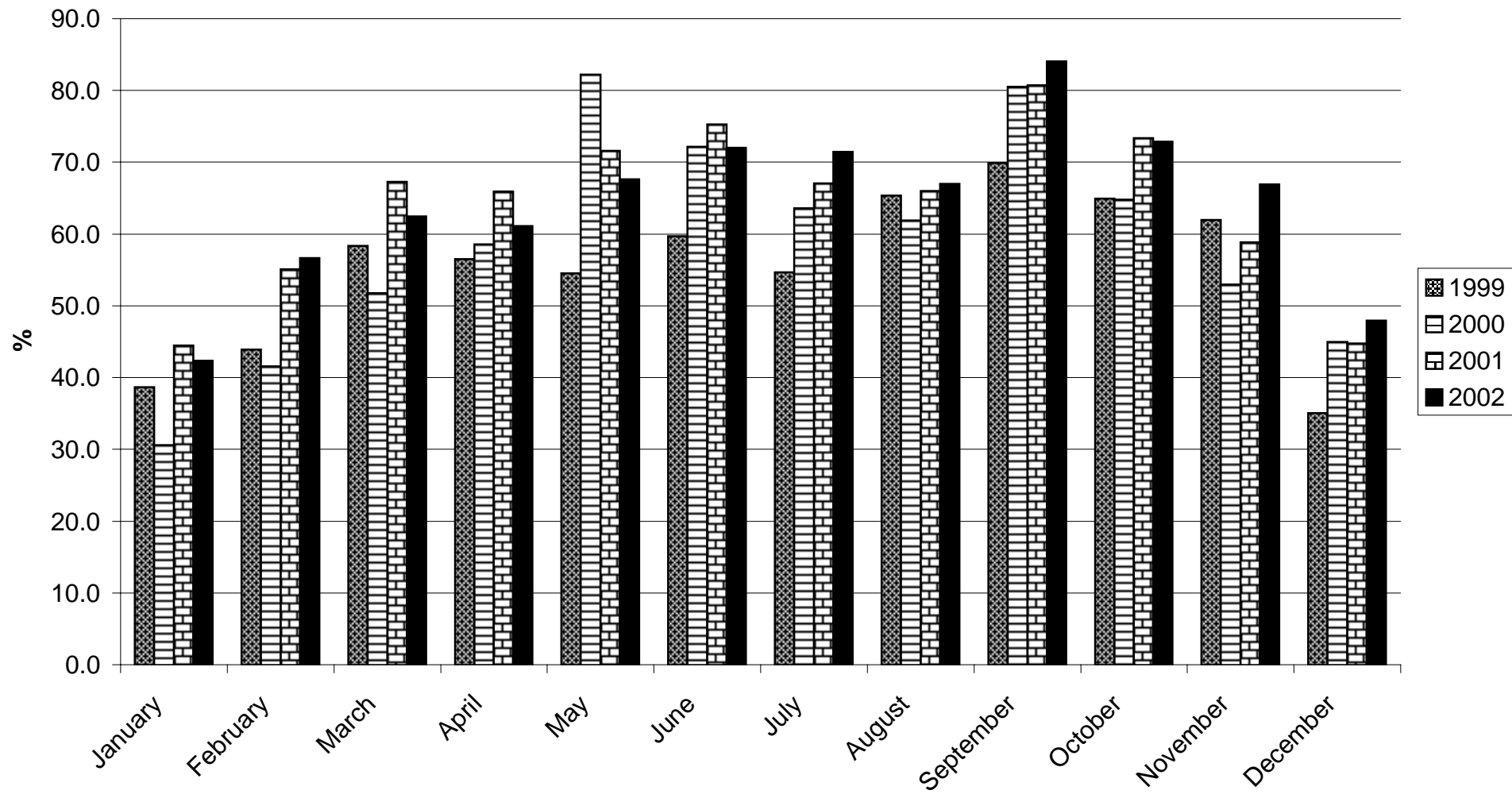
MONTH	ALL ARRIVALS					TOURIST ARRIVALS				
	1992	1993	1994	1995	1996	1992	1993	1994	1995	1996
JANUARY	30.1	30.6	37.5	23.1	30.4	17.4	15.9	23.6	16.2	16.3
FEBRUARY	30.2	42.5	39.0	39.7	34.2	17.8	22.4	23.6	26.2	21.8
MARCH	41.7	45.6	45.5	42.1	42.6	25.1	28.0	27.3	30.8	26.9
APRIL	40.2	46.3	43.5	52.7	44.2	25.3	29.3	26.8	38.8	30.1
MAY	46.2	57.0	49.7	50.3	49.3	27.1	33.6	28.4	35.4	31.7
JUNE	44.5	55.7	48.9	54.2	51.8	26.3	36.1	31.6	41.2	32.6
JULY	45.8	48.9	51.4	56.0	41.0	23.3	29.8	31.9	38.1	27.4
AUGUST	38.1	48.9	42.5	51.4	44.5	24.7	31.7	28.0	37.3	29.7
SEPTEMBER	51.3	63.0	57.6	64.4	59.0	28.5	37.2	38.8	51.0	34.3
OCTOBER	46.9	58.3	50.4	48.5	49.4	27.3	35.3	32.2	38.7	30.2
NOVEMBER	43.8	46.2	36.5	35.2	37.0	25.5	29.5	24.7	27.0	22.5
DECEMBER	35.1	36.3	31.5	31.7	36.2	23.7	24.9	22.7	24.5	20.4
TOTAL	41.2	48.4	44.5	46.1	43.3	24.3	29.5	28.3	33.8	27.0

Note: The yearly totals for 1995 and 1996 have been adjusted as a result of a program malfunction in the cumulative totals for those years.

Table 3(b): Room Occupancy Rates, 1997 - 2002

MONTH	ALL ARRIVALS						TOURIST ARRIVALS					
	1997	1998	1999	2000	2001	2002	1997	1998	1999	2000	2001	2002
JANUARY	28.6	34.8	38.7	30.6	44.4	42.3	14.8	23.1	21.9	19.6	26.1	25.4
FEBRUARY	39.9	44.7	43.9	41.6	55.1	56.6	23.4	29.4	26.9	24.8	33.7	35.1
MARCH	41.7	48.3	58.4	51.7	67.3	62.4	26.3	36.0	34.0	33.1	39.4	43.3
APRIL	43.3	51.4	56.5	58.6	66.0	61.1	25.1	33.5	32.9	38.3	35.8	41.2
MAY	51.5	61.6	54.5	82.2	71.6	67.6	31.5	40.4	34.4	50.9	42.6	45.5
JUNE	52.2	58.9	59.7	72.2	75.3	72.0	30.0	37.7	37.1	44.4	48.2	40.8
JULY	48.3	55.7	54.6	63.6	67.0	71.4	27.0	34.6	32.6	39.6	44.5	47.1
AUGUST	54.3	65.1	65.4	61.9	66.0	67.0	30.2	42.4	40.2	42.9	44.7	44.8
SEPTEMBER	62.5	69.4	69.9	80.5	80.7	84.0	35.0	47.0	43.9	54.2	55.2	56.8
OCTOBER	56.1	59.3	64.9	64.8	73.3	72.9	28.2	39.5	41.6	43.4	48.9	44.9
NOVEMBER	50.7	55.1	62.0	52.9	58.8	66.9	25.4	32.2	35.0	33.7	37.2	36.6
DECEMBER	38.9	39.7	35.1	45.0	44.8	47.9	19.7	23.1	22.4	26.8	27.3	28.8
TOTAL	47.3	53.6	55.3	58.9	64.2	64.4	26.3	34.9	33.6	37.7	40.3	40.9

ROOM OCCUPANCY RATES, ALL ARRIVALS, 1999 - 2002



ROOM OCCUPANCY RATES, TOURIST ARRIVALS, 1999 - 2002

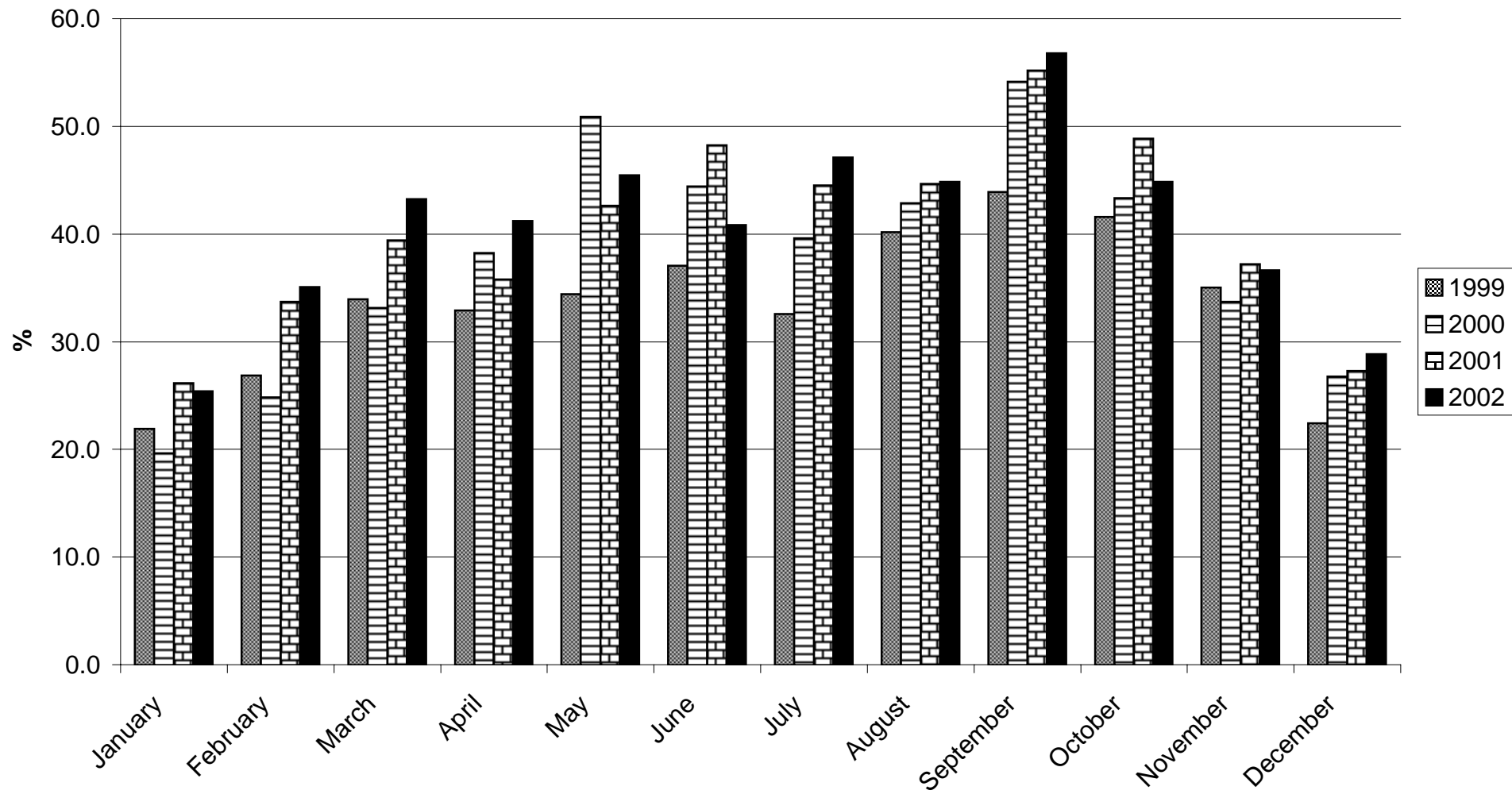


Table 4(a): Number of Arrivals by Month, all hotels 1976 -1982

MONTH	ALL ARRIVALS (00's)							TOURIST ARRIVALS (00's)						
	1976	1977	1978	1979	1980	1981	1982	1976	1977	1978	1979	1980	1981	1982
JANUARY	21	16	18	21	27	20	16	17	10	13	16	23	16	11
FEBRUARY	26	25	24	38	31	26	25	19	18	19	23	26	21	18
MARCH	34	28	31	40	37	33	37	28	20	22	27	31	26	24
APRIL	26	25	32	28	35	29	34	22	19	25	23	29	24	23
MAY	39	28	36	39	43	29	33	34	25	29	34	32	23	26
JUNE	29	30	41	41	44	28	32	27	26	35	34	27	23	23
JULY	35	31	35	45	34	31	29	31	27	29	39	29	21	23
AUGUST	36	34	38	46	39	32	34	31	28	30	37	34	23	22
SEPTEMBER	31	26	39	47	38	33	33	27	23	33	39	34	25	23
OCTOBER	30	26	40	46	37	31	31	24	24	33	38	31	25	20
NOVEMBER	23	25	35	32	26	23	23	17	17	27	26	20	18	17
DECEMBER	20	20	23	23	22	20	22	15	16	17	18	15	16	15
TOTAL	350	314	392	446	413	334	349	292	253	312	354	331	261	245

Note: Yearly totals have been rounded off and need not necessarily equal the sum of the rounded-off monthly figures.

Table 4(b): Number of Arrivals by Month, all hotels 1983 -1989

MONTH	ALL ARRIVALS (00's)							TOURIST ARRIVALS (00's)						
	1983	1984	1985	1986	1987	1988	1989	1983	1984	1985	1986	1987	1988	1989
JANUARY	16	18	26	31	41	46	34	11	11	10	24	37	32	24
FEBRUARY	23	25	45	40	46	47	43	16	13	27	29	35	36	35
MARCH	26	26	49	46	63	63	52	18	17	36	38	50	47	41
APRIL	30	29	46	44	62	61	53	19	16	33	36	50	48	41
MAY	34	38	46	57	58	60	46	21	20	37	40	38	46	36
JUNE	27	28	46	51	51	58	50	20	21	35	39	35	40	42
JULY	31	33	52	45	44	54	66	20	21	38	34	36	36	39
AUGUST	32	34	54	52	51	53	59	21	23	43	40	41	36	41
SEPTEMBER	36	35	54	55	62	58	74	25	26	41	44	48	38	44
OCTOBER	30	40	51	50	63	49	77	19	27	35	42	48	36	53
NOVEMBER	25	30	46	49	60	58	67	16	20	35	43	48	36	44
DECEMBER	21	21	36	46	52	42	58	14	12	24	29	34	26	35
TOTAL	331	357	551	566	653	649	679	220	227	394	438	500	457	475

Note: Yearly totals have been rounded off and need not necessarily equal the sum of the rounded-off monthly figures.

Table 4(c): Number of Arrivals by Month, all hotels 1990 -1996

MONTH	ALL ARRIVALS (00's)							TOURIST ARRIVALS (00's)						
	1990	1991	1992	1993	1994	1995	1996	1990	1991	1992	1993	1994	1995	1996
JANUARY	34	34	23	19	25	20	28	20	19	16	15	17	16	20
FEBRUARY	41	34	30	24	24	28	34	24	19	22	15	17	22	25
MARCH	79	39	34	29	31	34	40	30	23	27	21	21	24	27
APRIL	84	36	36	30	31	40	41	34	21	28	21	21	28	30
MAY	60	42	40	38	39	38	42	28	24	29	26	24	26	26
JUNE	53	32	41	35	33	39	41	23	21	28	24	23	27	26
JULY	63	39	38	33	34	46	38	31	25	26	22	24	33	27
AUGUST	46	35	36	33	33	44	39	25	24	29	25	23	31	30
SEPTEMBER	58	43	41	44	43	57	47	31	24	26	29	29	41	30
OCTOBER	50	47	39	45	39	41	43	26	25	27	29	27	32	31
NOVEMBER	41	26	28	35	25	31	33	21	16	20	23	17	25	22
DECEMBER	39	25	24	25	22	32	35	20	17	19	19	16	25	25
TOTAL	648	432	410	391	379	451	461	313	260	299	270	259	331	319

Note: Yearly totals have been rounded off and need not necessarily equal the sum of the rounded-off monthly figures.

Table 4(d): Number of Arrivals by Month, all hotels 1997 - 2002

MONTH	ALL ARRIVALS (00's)						TOURIST ARRIVALS (00's)					
	1997	1998	1999	2000	2001	2002	1997	1998	1999	2000	2001	2002
JANUARY	24	30	26	22	31	32	15	16	17	15	23	23
FEBRUARY	32	28	26	28	33	41	19	17	17	19	24	30
MARCH	33	31	36	39	45	46	19	21	23	28	32	35
APRIL	39	34	37	42	43	45	22	23	23	30	31	32
MAY	48	38	36	48	50	51	28	25	25	35	35	38
JUNE	47	35	38	48	50	43	27	24	25	36	34	30
JULY	43	34	34	40	50	58	28	23	22	29	37	40
AUGUST	55	42	43	46	53	58	33	30	28	35	41	41
SEPTEMBER	54	40	42	56	54	66	31	30	27	41	41	47
OCTOBER	39	42	43	48	51	62	28	29	30	36	38	40
NOVEMBER	38	36	37	39	43	51	20	24	23	29	34	33
DECEMBER	32	28	24	33	35	41	19	18	17	24	25	27
TOTAL	484	416	421	489	538	594	289	279	277	359	394	415

Note: Yearly totals have been rounded off and need not necessarily equal the sum of the rounded-off monthly figures.

ALL ARRIVALS AT HOTELS, 1997 - 2002

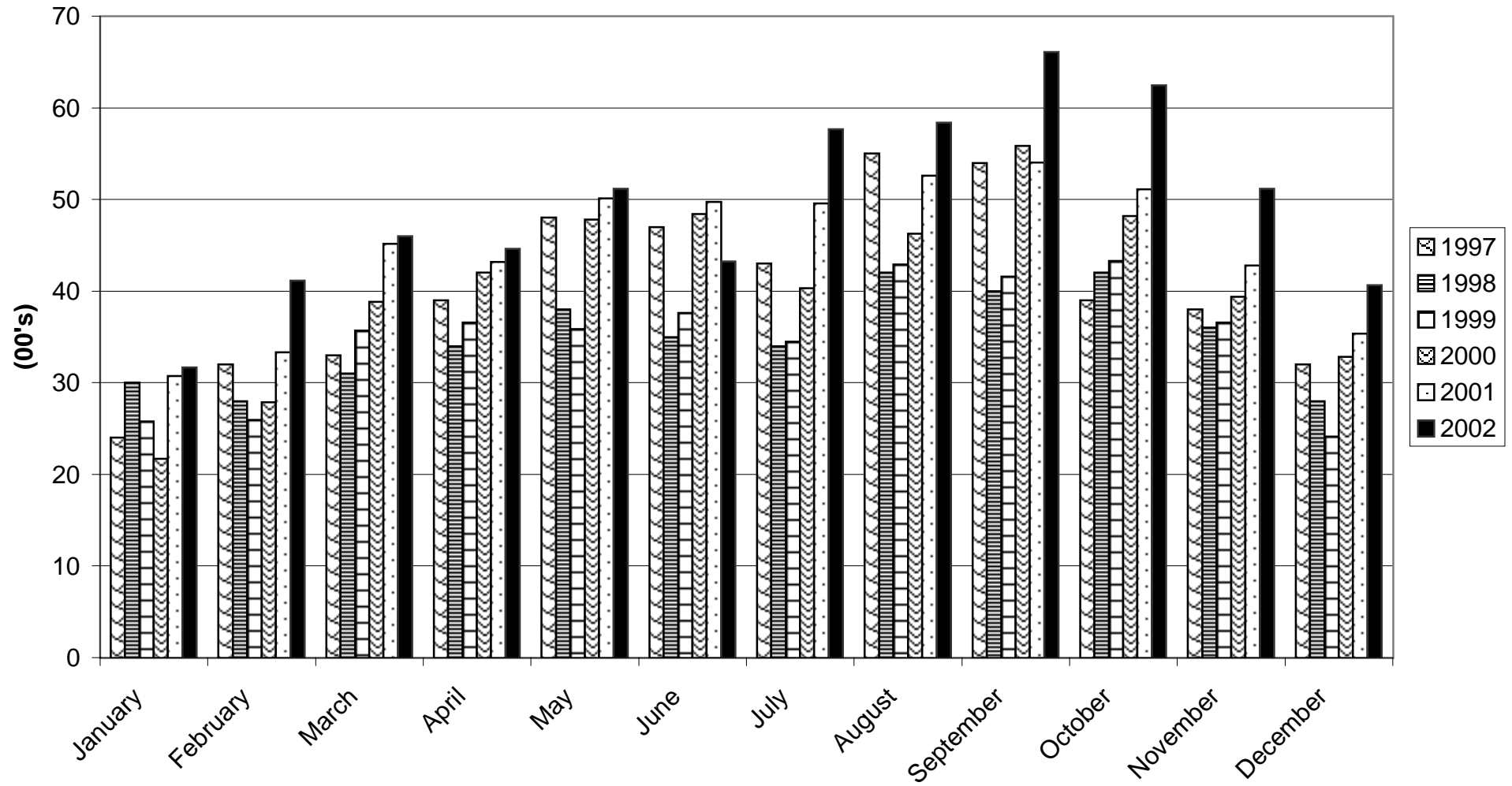


Table 5(a): Guest Nights Sold/Offered, % Sleeper Occupancy, all hotels 1976 -1979

ALL ARRIVALS

MONTH	GNS (000's)				GNO (000's)				% SLEEPER OCCUPANCY			
	1976	1977	1978	1979	1976	1977	1978	1979	1976	1977	1978	1979
JANUARY	12	10	9	10	50	44	45	45	23.4	23.0	19.3	23.3
FEBRUARY	14	17	12	17	47	40	40	42	29.0	41.3	30.2	40.3
MARCH	20	18	16	20	50	46	45	47	39.2	39.0	35.0	43.1
APRIL	17	15	21	17	47	44	44	46	35.6	33.9	46.4	38.0
MAY	21	17	22	24	48	45	46	47	45.1	37.6	48.4	50.9
JUNE	26	21	32	33	46	44	45	47	56.9	47.6	71.2	69.2
JULY	29	22	30	35	48	43	46	48	61.4	51.0	65.8	71.8
AUGUST	33	26	30	37	48	43	45	48	69.5	60.0	66.8	76.9
SEPTEMBER	25	21	30	39	44	44	46	47	56.1	48.8	64.3	82.2
OCTOBER	24	19	25	34	48	46	47	47	49.2	40.9	53.6	73.2
NOVEMBER	13	12	17	18	42	44	44	47	30.8	27.2	39.4	38.8
DECEMBER	11	11	13	12	45	45	45	48	24.8	24.0	29.1	24.7
TOTAL	245	209	257	296	563	528	538	559	43.5	39.4	47.8	53.0

Note: Yearly totals have been rounded off and need not necessarily equal the sum of the rounded-off monthly figures.

Table 5(b): Guest Nights Sold/Offered, % Sleeper Occupancy, all hotels 1980 -1983

ALL ARRIVALS

MONTH	GNS (000's)				GNO (000's)				% SLEEPER OCCUPANCY			
	1980	1981	1982	1983	1980	1981	1982	1983	1980	1981	1982	1983
JANUARY	12	10	9	9	45	44	43	45	26.6	23.2	20.2	19.0
FEBRUARY	14	13	14	11	42	40	40	41	32.9	31.9	35.2	27.7
MARCH	21	17	19	16	46	44	44	46	46.4	38.8	42.4	34.8
APRIL	23	18	22	16	47	44	44	45	48.5	40.3	50.5	35.9
MAY	22	16	23	20	48	44	45	46	46.9	37.1	50.0	43.2
JUNE	28	18	24	23	47	42	45	45	60.2	42.0	54.7	49.7
JULY	26	17	24	20	48	42	46	47	53.1	40.2	51.9	42.3
AUGUST	31	19	24	25	47	43	45	47	64.9	43.5	52.0	54.0
SEPTEMBER	30	19	22	25	47	43	43	46	63.0	44.1	51.7	54.6
OCTOBER	24	18	19	21	46	47	45	47	52.2	39.1	42.6	43.7
NOVEMBER	14	13	12	13	44	42	44	45	31.8	30.1	27.9	30.2
DECEMBER	11	10	11	11	44	44	45	46	26.2	23.6	25.6	24.4
TOTAL	256	188	223	210	551	519	529	546	46.5	36.2	42.2	38.4

Note: Yearly totals have been rounded off and need not necessarily equal the sum of the rounded-off monthly figures.

Table 5(c): Guest Nights Sold/Offered, % Sleeper Occupancy, all hotels 1984 -1987

ALL ARRIVALS

MONTH	GNS (000's)				GNO (000's)				% SLEEPER OCCUPANCY			
	1984	1985	1986	1987	1984	1985	1986	1987	1984	1985	1986	1987
JANUARY	9	11	13	19	46	45	43	46	20.7	24.3	30.1	42.1
FEBRUARY	13	18	15	18	43	41	38	42	30.0	42.7	39.0	43.9
MARCH	15	25	21	26	47	46	43	46	32.5	54.0	48.7	57.5
APRIL	18	25	18	24	45	45	42	43	39.9	56.8	42.0	55.6
MAY	23	23	25	25	46	47	45	45	50.5	50.3	57.2	55.7
JUNE	23	31	29	22	45	45	43	44	50.8	69.4	67.9	49.1
JULY	22	28	23	20	45	48	44	45	50.1	58.0	51.8	44.5
AUGUST	25	32	27	26	47	48	46	45	53.0	67.7	59.7	57.7
SEPTEMBER	27	32	29	29	44	46	44	45	61.0	68.2	64.8	65.6
OCTOBER	25	27	26	26	46	48	45	44	53.2	55.6	59.3	58.8
NOVEMBER	15	17	23	24	45	46	43	44	32.3	36.9	54.1	54.4
DECEMBER	11	13	17	20	47	47	44	46	22.9	27.3	38.5	42.5
TOTAL	226	282	266	279	546	552	520	535	41.3	51.0	51.3	52.3

Note: Yearly totals have been rounded off and need not necessarily equal the sum of the rounded-off monthly figures.

Table 5(d): Guest Nights Sold/Offered, % Sleeper Occupancy, all hotels 1988 -1991

ALL ARRIVALS

MONTH	GNS (000's)				GNO (000's)				% SLEEPER OCCUPANCY			
	1988	1989	1990	1991	1988	1989	1990	1991	1988	1989	1990	1991
JANUARY	16	15	11	12	46	42	37	40	35.8	35.2	31.2	29.4
FEBRUARY	19	18	14	13	44	40	37	37	42.6	46.0	37.3	34.5
MARCH	26	22	19	17	48	42	42	44	53.6	52.0	45.3	37.5
APRIL	26	23	23	14	45	42	41	41	57.1	54.8	55.4	34.0
MAY	26	19	21	17	47	44	42	41	55.1	41.9	50.4	40.2
JUNE	29	19	15	16	47	43	39	44	61.6	43.9	37.3	35.8
JULY	27	20	18	16	48	43	42	43	55.8	46.8	43.8	37.9
AUGUST	24	19	15	16	48	43	41	40	50.4	45.1	35.2	41.2
SEPTEMBER	26	19	18	17	44	42	41	44	60.4	46.0	44.4	39.2
OCTOBER	26	19	18	18	46	40	40	43	56.4	46.2	44.5	42.5
NOVEMBER	22	14	12	13	43	38	40	41	51.4	38.2	30.2	31.1
DECEMBER	19	13	13	10	45	42	39	45	42.6	31.2	32.4	22.4
TOTAL	286	220	197	178	551	501	481	502	52.0	44.0	40.8	35.5

Note: Yearly totals have been rounded off and need not necessarily equal the sum of the rounded-off monthly figures.

Table 5(e): Guest Nights Sold/Offered, % Sleeper Occupancy, all hotels 1992 -1995

ALL ARRIVALS

MONTH	GNS (000's)				GNO (000's)				% SLEEPER OCCUPANCY			
	1992	1993	1994	1995	1992	1993	1994	1995	1992	1993	1994	1995
JANUARY	9	7	10	6	42	33	34	32	20.6	21.5	29.4	19.0
FEBRUARY	9	9	9	10	41	30	30	28	22.8	30.1	31.3	34.9
MARCH	14	12	12	10	46	33	33	31	29.6	36.2	37.2	33.4
APRIL	14	12	12	13	42	32	31	25	32.6	38.3	39.2	49.5
MAY	15	16	15	13	43	34	35	31	35.6	45.6	42.5	41.4
JUNE	16	15	14	14	47	32	33	30	34.8	48.0	40.6	46.3
JULY	16	14	15	15	45	32	35	32	35.2	41.8	42.4	48.2
AUGUST	14	14	13	15	44	33	35	32	32.2	44.0	37.0	46.2
SEPTEMBER	16	18	16	18	41	32	33	31	39.7	56.2	48.9	58.0
OCTOBER	15	17	15	13	42	34	35	32	34.6	50.9	43.9	41.1
NOVEMBER	10	13	9	9	32	32	33	31	32.6	39.4	27.8	28.1
DECEMBER	9	10	9	9	33	33	34	32	27.0	29.6	25.2	26.7
TOTAL	157	157	149	144	497	391	401	369	31.6	40.2	37.2	39.2

Note: Yearly totals have been rounded off and need not necessarily equal the sum of the rounded-off monthly figures.

Table 5(f): Guest Nights Sold/Offered, % Sleeper Occupancy, all hotels 1996 -1999

ALL ARRIVALS

MONTH	GNS (000's)				GNO (000's)				% SLEEPER OCCUPANCY			
	1996	1997	1998	1999	1996	1997	1998	1999	1996	1997	1998	1999
JANUARY	8	8	7	8	32	31	30	29	24.9	24.1	24.8	28.8
FEBRUARY	9	10	9	9	30	29	25	26	29.9	34.1	35.4	34.2
MARCH	12	10	11	13	32	31	28	29	36.3	33.0	38.8	45.5
APRIL	12	11	11	13	31	31	26	29	39.1	36.3	42.4	44.3
MAY	14	14	12	13	32	32	27	29	43.0	45.0	45.6	43.7
JUNE	13	13	13	14	30	30	28	29	37.2	44.4	45.9	49.1
JULY	12	14	13	13	31	31	29	29	39.0	44.1	43.9	44.5
AUGUST	13	16	16	16	31	31	29	29	42.3	51.3	54.4	56.3
SEPTEMBER	16	16	17	16	31	31	28	29	51.9	50.7	59.8	56.9
OCTOBER	13	14	15	15	31	31	29	31	42.8	44.1	50.2	50.0
NOVEMBER	10	10	12	14	30	31	28	30	31.3	31.7	43.8	46.0
DECEMBER	9	9	9	8	31	31	29	31	29.0	28.2	32.2	25.6
TOTAL	141	144	145	154	372	370	335	351	37.8	39.0	43.1	43.8

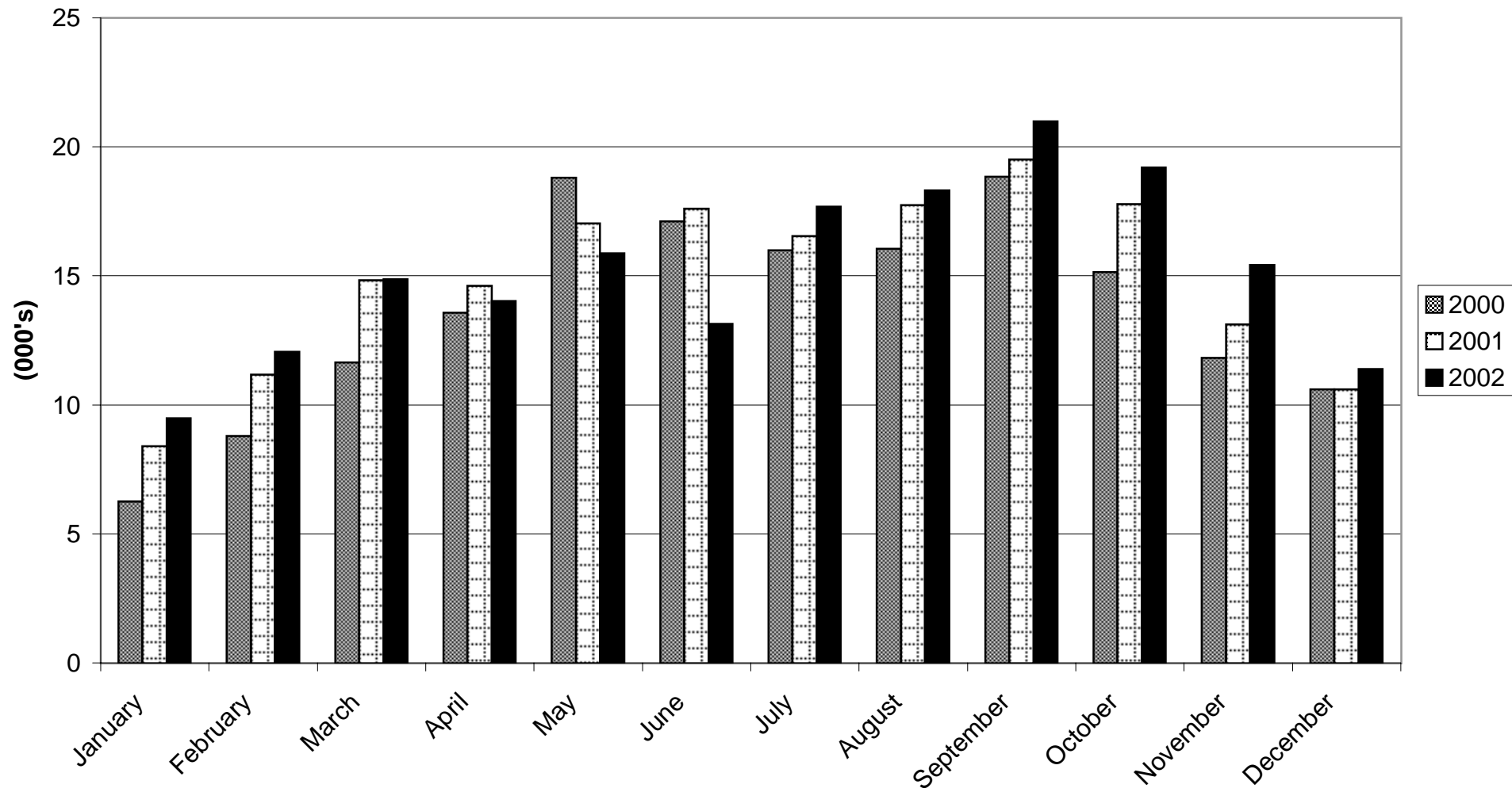
Note: Yearly totals have been rounded off and need not necessarily equal the sum of the rounded-off monthly figures.

Table 5(g): ALL ARRIVALS - Guest Nights Sold/Offered, % Sleeper Occupancy, all hotels 2000 - 2002

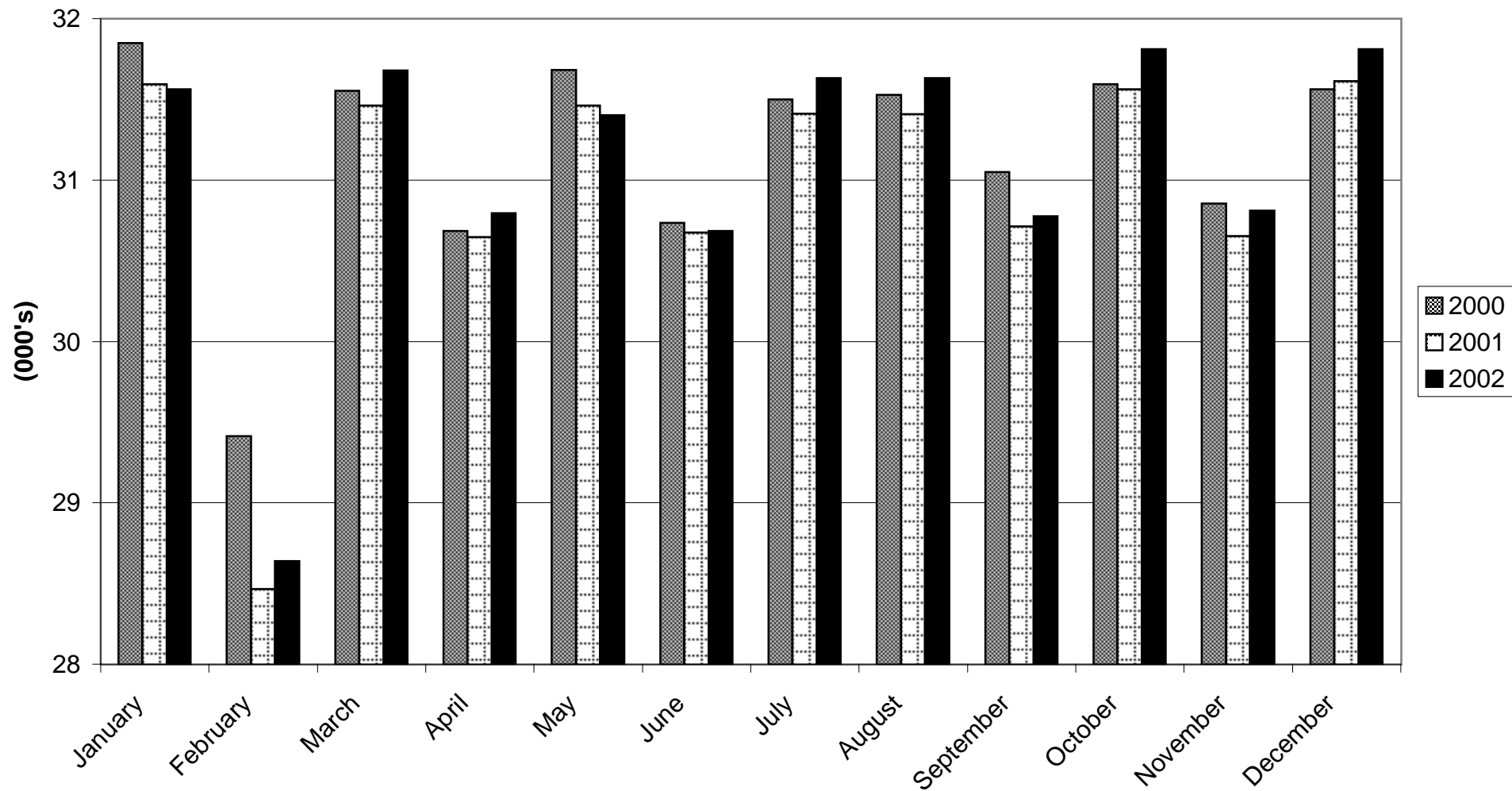
MONTH	GUEST NIGHTS SOLD (000's)			GUEST NIGHTS OFFERED (000's)			% SLEEPER OCCUPANCY		
	2000	2001	2002	2000	2001	2002	2000	2001	2002
JANUARY	6	8	9	31	31	31	20.0	27.0	30.5
FEBRUARY	9	11	12	29	28	28	30.4	40.0	42.9
MARCH	12	15	15	31	31	31	37.5	47.9	47.7
APRIL	14	15	14	30	30	30	45.0	48.4	46.3
MAY	19	17	16	31	31	31	60.3	55.0	51.3
JUNE	17	18	13	30	30	30	56.6	58.3	43.6
JULY	16	17	18	31	31	31	50.2	53.5	56.8
AUGUST	16	18	18	31	31	31	51.8	57.4	58.8
SEPTEMBER	19	20	21	31	30	30	61.7	64.6	69.3
OCTOBER	15	18	19	31	31	31	48.7	57.3	61.3
NOVEMBER	12	13	15	30	30	30	38.9	43.5	50.9
DECEMBER	11	11	11	31	31	31	34.1	34.1	36.4
TOTAL	164	179	182	368	366	367	44.6	48.9	49.7

Note: Yearly totals have been rounded off and need not necessarily equal the sum of the rounded-off monthly figures.

GUEST NIGHTS SOLD, ALL ARRIVALS, 2000 - 2002



GUEST NIGHTS OFFERED, ALL ARRIVALS, 2000 - 2002



% SLEEPER OCCUPANCY, ALL ARRIVALS, 2000 - 2002



Table 6(a): Guest Nights Sold/Offered, % Sleeper Occupancy, all hotels 1976 -1979

TOURIST ARRIVALS

MONTH	GNS (000's)				GNO (000's)				% SLEEPER OCCUPANCY			
	1976	1977	1978	1979	1976	1977	1978	1979	1976	1977	1978	1979
JANUARY	9	6	6	8	50	44	45	45	17.9	13.2	14.4	18.0
FEBRUARY	10	13	10	11	47	40	40	42	21.7	31.0	24.1	25.3
MARCH	17	15	13	14	50	46	45	47	33.2	32.1	28.7	30.4
APRIL	15	12	18	15	47	44	44	46	31.7	27.7	39.5	31.3
MAY	19	16	19	21	48	45	46	47	39.6	34.3	42.3	44.3
JUNE	24	19	26	27	46	44	45	47	52.0	44.1	58.0	57.4
JULY	26	20	27	30	48	43	46	48	55.5	45.5	59.1	62.7
AUGUST	31	22	27	30	48	43	45	48	64.0	52.0	59.6	63.4
SEPTEMBER	23	18	26	34	44	44	46	47	52.4	42.1	57.0	72.3
OCTOBER	21	16	22	27	48	46	47	47	44.7	35.2	47.6	57.4
NOVEMBER	11	9	15	13	42	44	44	47	25.3	21.4	33.9	27.1
DECEMBER	9	9	10	9	45	45	45	48	21.0	19.3	23.2	19.5
TOTAL	215	175	219	239	563	528	538	559	38.3	33.1	40.9	42.8

Note: Yearly totals have been rounded off and need not necessarily equal the sum of the rounded-off monthly figures.

Table 6(b): Guest Nights Sold/Offered, % Sleeper Occupancy, all hotels 1980 -1983

TOURIST ARRIVALS

MONTH	GNS (000's)				GNO (000's)				% SLEEPER OCCUPANCY			
	1980	1981	1982	1983	1980	1981	1982	1983	1980	1981	1982	1983
JANUARY	10	8	7	7	45	44	43	45	22.2	18.0	15.3	15.5
FEBRUARY	11	9	10	8	42	40	40	41	26.4	21.4	24.8	20.7
MARCH	17	13	13	11	46	44	44	46	36.4	30.4	30.4	24.7
APRIL	17	14	16	10	47	44	44	45	37.1	31.1	36.1	23.4
MAY	17	13	16	14	48	44	45	46	35.9	30.4	35.2	29.4
JUNE	22	14	19	18	47	42	45	45	46.3	32.7	42.2	38.7
JULY	23	12	19	16	48	42	46	47	46.7	28.5	40.5	33.6
AUGUST	28	15	18	19	47	43	45	47	59.3	34.6	40.2	41.9
SEPTEMBER	25	16	16	19	47	43	43	46	53.6	37.2	43.4	41.7
OCTOBER	21	15	14	14	46	47	45	47	45.7	32.1	29.9	30.5
NOVEMBER	11	10	9	10	44	42	44	45	25.1	24.4	21.4	21.2
DECEMBER	8	8	8	9	44	44	45	46	19.2	18.0	18.3	18.4
TOTAL	210	147	165	155	551	519	529	546	38.2	28.3	31.1	28.4

Note: Yearly totals have been rounded off and need not necessarily equal the sum of the rounded-off monthly figures.

Table 6(c): Guest Nights Sold/Offered, % Sleeper Occupancy, all hotels 1984 -1987

TOURIST ARRIVALS

MONTH	GNS (000's)				GNO (000's)				% SLEEPER OCCUPANCY			
	1984	1985	1986	1987	1984	1985	1986	1987	1984	1985	1986	1987
JANUARY	7	8	10	15	46	45	43	46	15.0	16.5	22.1	33.6
FEBRUARY	8	14	12	15	43	41	38	42	19.4	33.8	31.0	34.8
MARCH	12	19	16	21	47	46	43	46	24.6	42.2	38.1	46.3
APRIL	13	18	13	19	45	45	42	43	28.4	40.2	30.7	44.9
MAY	15	18	19	18	46	47	45	45	33.2	39.4	41.9	38.6
JUNE	18	24	23	16	45	45	43	44	40.6	52.9	52.8	36.9
JULY	18	23	18	15	45	48	44	45	40.0	47.5	41.0	34.3
AUGUST	20	27	21	19	47	48	46	45	42.0	57.0	46.3	42.5
SEPTEMBER	22	26	21	22	44	46	44	45	50.2	56.7	48.1	49.7
OCTOBER	19	19	20	21	46	48	45	44	41.0	40.2	45.3	46.4
NOVEMBER	11	13	18	18	45	46	43	44	24.6	28.4	41.7	41.8
DECEMBER	8	9	12	14	47	47	44	46	17.4	18.8	27.5	29.8
TOTAL	171	218	203	213	546	552	520	535	31.3	39.6	38.6	40.0

Note: Yearly totals have been rounded off and need not necessarily equal the sum of the rounded-off monthly figures.

Table 6(d): Guest Nights Sold/Offered, % Sleeper Occupancy, all hotels 1988 -1991

TOURIST ARRIVALS

MONTH	GNS (000's)				GNO (000's)				% SLEEPER OCCUPANCY			
	1988	1989	1990	1991	1988	1989	1990	1991	1988	1989	1990	1991
JANUARY	13	10	8	7	46	42	37	40	27.5	23.7	22.7	17.7
FEBRUARY	14	13	10	8	44	40	37	37	32.2	33.4	27.1	20.2
MARCH	19	15	13	8	48	42	42	44	39.8	36.2	31.0	19.1
APRIL	20	16	14	9	45	42	41	41	44.8	37.0	34.0	21.9
MAY	19	12	12	10	47	44	42	41	40.3	27.9	29.4	23.3
JUNE	20	14	10	8	47	43	39	44	43.5	32.7	24.3	19.4
JULY	19	13	12	10	48	43	42	43	39.2	30.6	27.4	23.2
AUGUST	17	13	10	8	48	43	41	40	34.5	30.6	23.1	21.3
SEPTEMBER	17	12	12	8	44	42	41	44	37.8	29.8	30.0	18.2
OCTOBER	17	14	11	10	46	40	40	43	37.9	34.0	27.8	23.3
NOVEMBER	14	11	8	7	43	38	40	41	32.5	27.6	19.5	16.4
DECEMBER	11	9	8	6	45	42	39	45	24.3	21.7	20.9	12.9
TOTAL	200	152	128	99	551	501	481	502	36.2	30.4	26.5	19.7

Note: Yearly totals have been rounded off and need not necessarily equal the sum of the rounded-off monthly figures.

Table 6(e): Guest Nights Sold/Offered, % Sleeper Occupancy, all hotels 1992 -1995

TOURIST ARRIVALS

MONTH	GNS (000's)				GNO (000's)				% SLEEPER OCCUPANCY			
	1992	1993	1994	1995	1992	1993	1994	1995	1992	1993	1994	1995
JANUARY	5	4	7	5	42	33	34	32	12.9	12.4	19.5	15.1
FEBRUARY	6	5	6	7	41	30	30	28	15.4	17.7	21.1	25.8
MARCH	9	8	8	8	46	33	33	31	19.3	23.0	24.5	26.4
APRIL	9	8	9	10	42	32	31	25	21.7	25.2	27.1	38.1
MAY	9	10	10	9	43	34	35	31	20.7	28.5	28.5	30.8
JUNE	10	10	9	11	47	32	33	30	22.0	32.7	28.3	37.2
JULY	10	8	10	11	45	32	35	32	21.3	26.2	28.7	36.2
AUGUST	10	10	8	11	44	33	35	32	22.0	30.5	25.6	34.8
SEPTEMBER	9	12	12	14	41	32	33	31	22.7	36.8	35.2	45.6
OCTOBER	9	11	11	11	42	34	35	32	20.8	33.2	30.4	34.1
NOVEMBER	6	9	7	7	32	32	33	31	20.1	27.8	20.6	23.8
DECEMBER	6	7	6	7	33	33	34	32	17.5	21.8	18.9	21.8
TOTAL	98	103	103	113	497	391	401	369	19.8	26.4	25.8	30.7

Note: Yearly totals have been rounded off and need not necessarily equal the sum of the rounded-off monthly figures.

Table 6(f): Guest Nights Sold/Offered, % Sleeper Occupancy, all hotels 1996 -1999

TOURIST ARRIVALS

MONTH	GNS (000's)				GNO (000's)				% SLEEPER OCCUPANCY			
	1996	1997	1998	1999	1996	1997	1998	1999	1996	1997	1998	1999
JANUARY	5	5	4	5	32	31	30	29	16.4	15.2	14.4	17.2
FEBRUARY	7	6	5	6	30	29	25	26	22.8	22.3	21.4	21.8
MARCH	9	7	7	8	32	31	28	29	26.7	21.3	25.8	27.7
APRIL	10	7	7	8	31	31	26	29	30.9	23.9	28.8	27.3
MAY	10	10	8	9	32	32	27	29	30.9	29.9	30.6	30.0
JUNE	9	9	9	9	30	30	28	29	30.5	28.9	30.5	31.4
JULY	9	9	8	8	31	31	29	29	29.3	28.6	28.4	27.6
AUGUST	10	11	10	10	31	31	29	29	32.0	34.5	36.5	35.2
SEPTEMBER	10	11	12	10	31	31	28	29	34.3	34.8	41.5	36.2
OCTOBER	10	9	10	11	31	31	29	31	30.9	28.3	34.6	34.3
NOVEMBER	7	6	8	9	30	31	28	30	21.5	20.9	27.1	28.8
DECEMBER	6	6	6	5	31	31	29	31	20.7	18.9	19.5	17.3
TOTAL	101	95	95	98	372	370	335	351	27.2	25.6	28.2	27.9

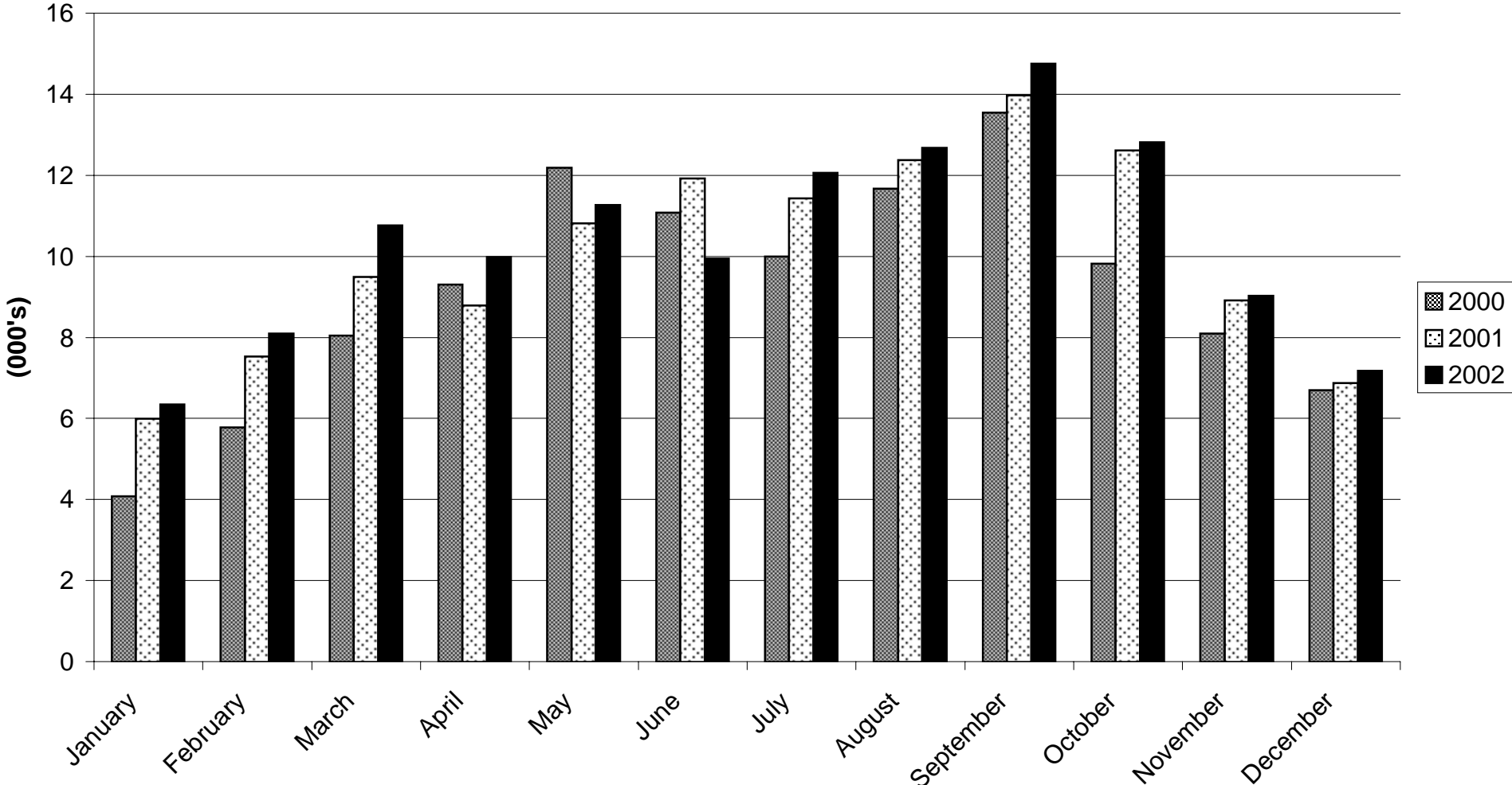
Note: Yearly totals have been rounded off and need not necessarily equal the sum of the rounded-off monthly figures.

Table 6(g): TOURIST ARRIVALS - Guest Nights Sold/Offered, % Sleeper Occupancy, all hotels 2000 - 2002

MONTH	GUEST NIGHTS SOLD (000's)			GUEST NIGHTS OFFERED (000's)			% SLEEPER OCCUPANCY		
	2000	2001	2002	2000	2001	2002	2000	2001	2002
JANUARY	4	6	6	31	31	31	13.0	19.3	20.4
FEBRUARY	6	8	8	29	28	28	20.0	26.9	28.8
MARCH	8	9	11	31	31	31	25.9	30.7	34.5
APRIL	9	9	10	30	30	30	30.8	29.1	33.0
MAY	12	11	11	31	31	31	39.1	34.9	36.5
JUNE	11	12	10	30	30	30	36.6	39.5	33.0
JULY	10	11	12	31	31	31	33.4	37.0	38.7
AUGUST	12	12	13	31	31	31	37.6	40.0	40.7
SEPTEMBER	14	14	15	31	30	30	44.3	46.3	48.7
OCTOBER	10	13	13	31	31	31	31.6	40.6	40.9
NOVEMBER	8	9	9	30	30	30	26.7	29.6	29.8
DECEMBER	7	7	7	31	31	31	21.6	22.1	22.9
TOTAL	111	121	125	368	366	367	30.1	33.0	34.0

Note: Yearly totals have been rounded off and need not necessarily equal the sum of the rounded-off monthly figures.

GUEST NIGHTS SOLD, TOURIST ARRIVALS, 2000 - 2002



% SLEEPER OCCUPANCY, TOURIST ARRIVALS, 2000- 2002

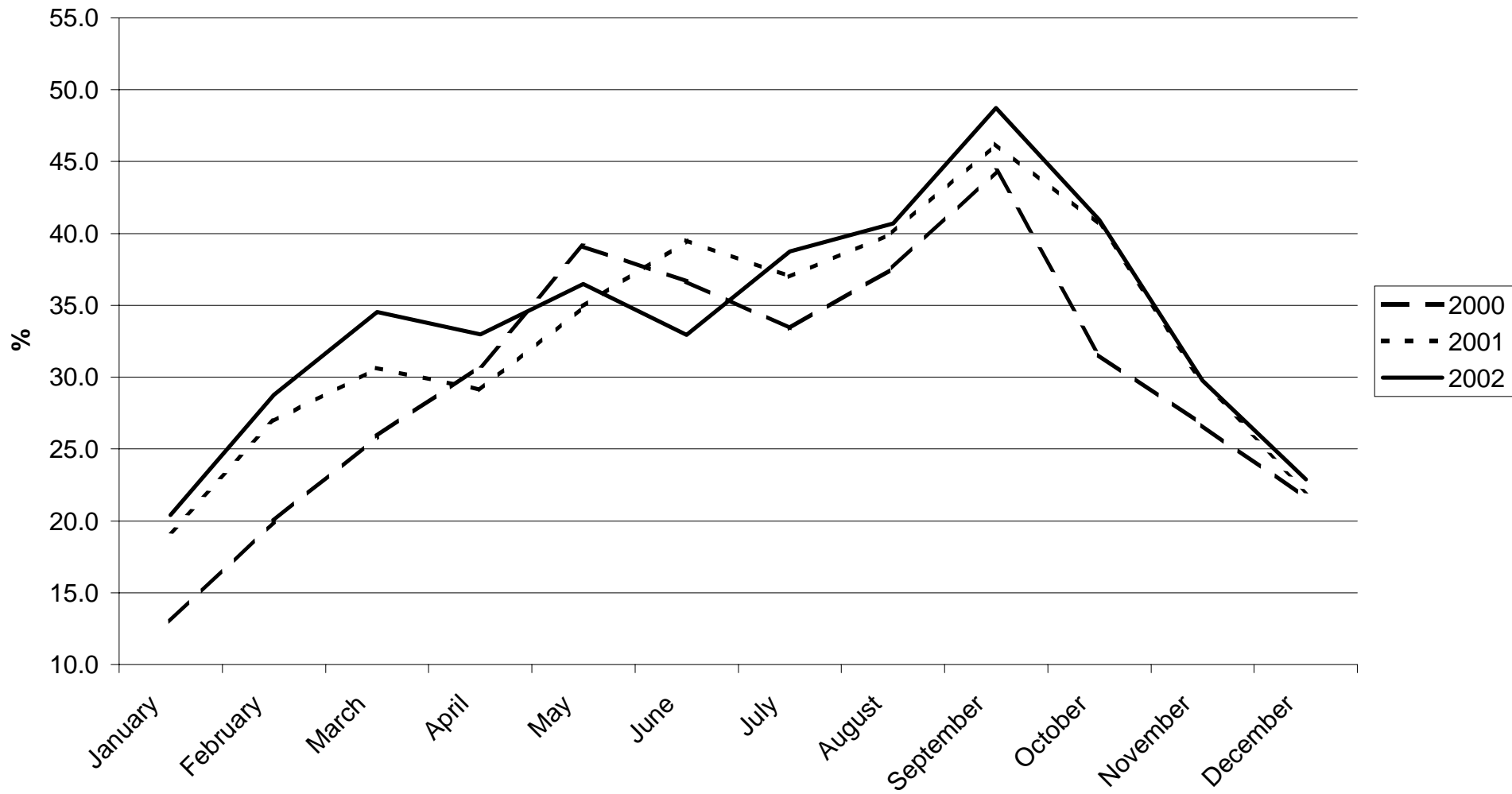


Table 7(a): Average Length of Stay per person (nights), all hotels 1976 - 2002

ALL ARRIVALS

YEAR	JAN	FEB	MAR	APR	MAY	JUN	JUL	AUG	SEP	OCT	NOV	DEC	TOTAL
1976	5.5	5.3	5.8	6.6	5.5	8.9	8.4	9.2	8.1	8.0	5.6	5.5	7.0
1977	6.4	6.6	6.3	6.0	6.1	7.1	7.1	8.0	8.2	7.1	4.8	5.2	6.6
1978	4.8	5.1	5.2	6.4	6.1	7.9	8.8	8.0	7.6	6.3	5.0	5.7	6.6
1979	5.0	4.5	5.0	6.2	6.2	8.0	7.7	7.9	8.3	7.5	5.6	5.2	6.6
1980	4.5	4.5	5.8	6.5	5.2	6.5	7.6	7.9	7.8	6.4	5.2	5.3	6.2
1981	5.1	4.9	5.2	6.0	5.7	6.4	5.5	5.9	5.8	5.8	5.5	5.1	5.6
1982	5.6	5.6	5.1	6.5	6.3	7.6	8.2	6.9	6.7	6.3	5.3	5.2	6.4
1983	5.3	5.0	6.0	5.4	5.8	8.3	6.4	7.9	7.0	7.0	5.4	5.4	6.3
1984	5.3	5.2	5.9	6.2	6.1	8.0	6.8	7.4	7.7	6.1	4.9	5.1	6.3
1985	4.3	3.9	5.1	5.5	5.1	6.7	5.3	6.0	5.8	5.2	3.7	3.6	5.1
1986	4.3	3.7	4.6	4.0	4.5	5.7	5.0	5.2	5.2	5.3	4.8	3.7	4.7
1987	4.7	4.0	4.2	3.9	4.4	4.2	4.6	5.1	4.7	4.1	4.0	3.7	4.2
1988	3.6	4.1	4.1	4.3	4.3	4.9	5.0	4.6	4.6	5.2	3.8	4.6	4.4
1989	4.4	4.2	4.2	4.3	4.0	3.7	3.0	3.3	2.6	2.4	2.2	2.2	3.2
1990	3.3	3.4	2.4	2.7	3.5	2.8	2.9	3.2	3.1	3.6	3.0	3.3	3.0
1991	3.5	3.8	4.3	3.9	4.0	5.0	4.2	4.7	4.0	3.9	4.8	3.9	4.1
1992	3.7	3.1	4.0	3.8	3.9	4.0	4.2	3.9	3.9	3.7	3.7	3.7	3.8
1993	3.7	3.8	4.1	4.1	4.1	4.3	4.1	4.4	4.1	3.8	3.6	4.0	4.0
1994	4.0	4.0	4.0	4.0	3.8	4.0	4.4	3.9	3.8	3.9	3.7	3.8	3.9
1995	3.0	3.6	3.1	3.1	3.3	3.6	3.3	3.4	3.2	3.2	2.8	2.7	3.2
1996	2.8	2.6	2.9	3.0	3.2	3.3	3.2	3.4	3.4	3.1	2.9	2.6	3.1
1997	3.1	3.0	3.1	2.9	3.0	2.9	3.2	2.9	2.9	3.5	2.6	2.7	3.0
1998	2.5	3.2	3.5	3.2	3.3	3.7	3.7	3.7	4.2	3.5	3.5	3.3	3.5
1999	3.3	3.5	3.7	3.5	3.6	3.8	3.8	3.8	3.9	3.6	3.8	3.3	3.7
2000	2.9	3.2	3.0	3.2	3.9	3.5	3.9	3.5	3.4	3.1	3.0	3.2	3.4
2001	2.7	3.4	3.3	3.4	3.4	3.5	3.3	3.4	3.6	3.5	3.5	3.1	3.3
2002	3.0	2.9	3.2	3.1	3.1	3.0	3.1	3.1	3.2	3.1	3.0	2.8	3.1

AVERAGE LENGTH OF STAY, ALL ARRIVALS, 2000 - 2002

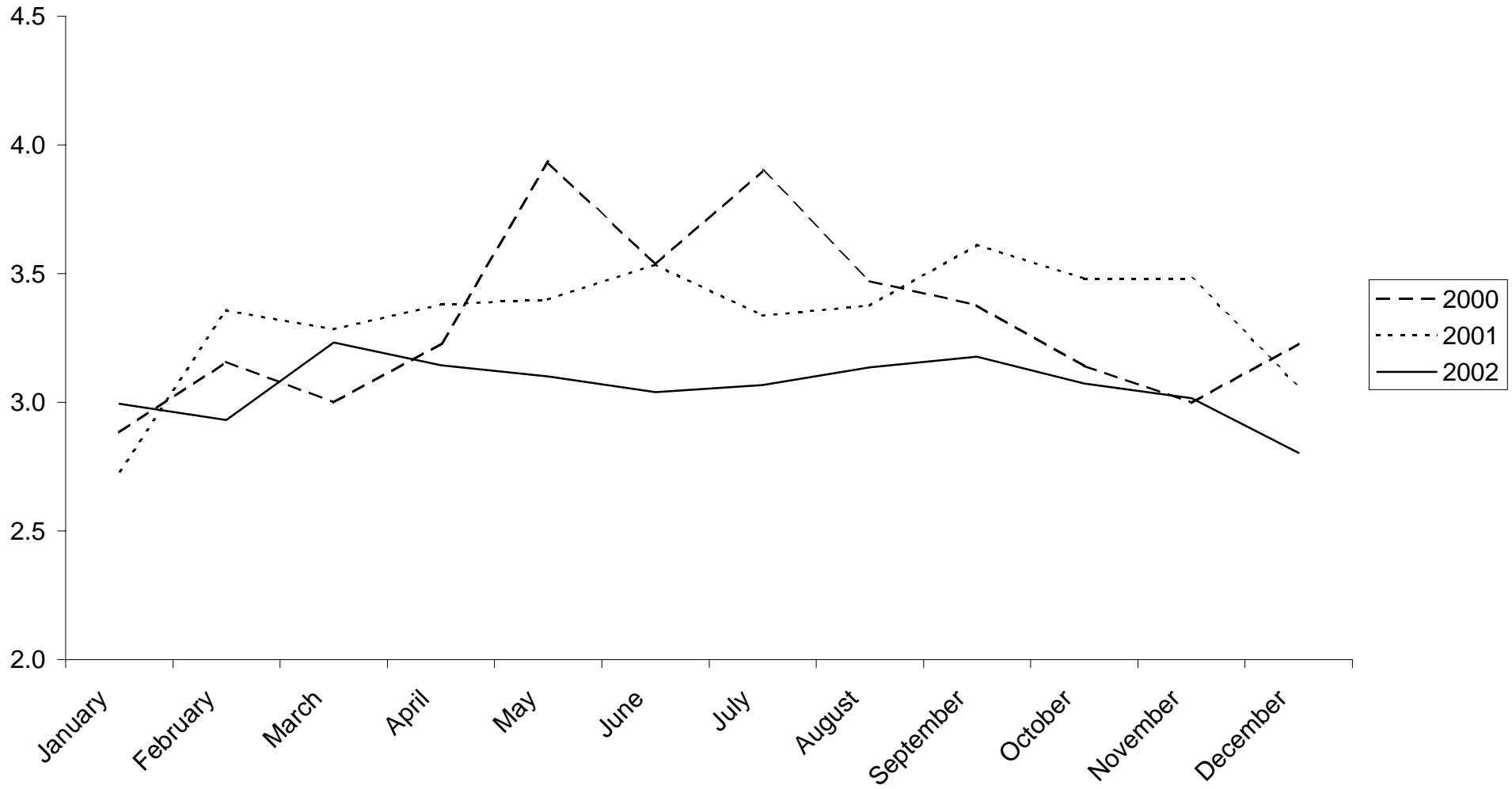


Table 7(b): Average Length of Stay per person (nights), all hotels 1976 - 2002

TOURIST ARRIVALS

YEAR	JAN	FEB	MAR	APR	MAY	JUN	JUL	AUG	SEP	OCT	NOV	DEC	TOTAL
1976	5.2	5.3	5.9	6.7	5.5	9.0	8.7	10.0	8.7	8.8	6.2	6.1	7.4
1977	5.9	7.0	7.2	6.5	6.8	7.3	7.2	8.0	7.9	6.7	5.6	5.4	6.9
1978	5.0	5.1	5.8	7.1	6.7	7.6	9.4	8.8	8.1	6.8	5.4	6.2	7.1
1979	4.9	4.5	5.4	6.3	6.1	7.9	7.7	8.1	8.8	7.2	5.0	5.2	6.8
1980	4.3	4.3	5.5	6.0	5.4	8.0	7.7	8.2	7.5	6.7	5.5	5.6	6.3
1981	5.0	4.1	5.1	5.8	6.3	6.1	5.6	6.4	6.4	5.9	5.7	5.0	5.6
1982	6.1	5.4	5.5	7.0	6.1	8.2	8.0	8.2	10.1	6.7	5.6	5.4	6.7
1983	6.6	5.4	6.2	5.7	6.6	8.4	7.8	9.2	7.7	7.5	5.8	6.3	7.1
1984	6.4	6.3	6.6	8.0	7.8	8.8	8.4	8.7	8.5	7.1	5.7	6.6	7.5
1985	7.3	5.2	5.4	5.4	4.9	6.8	6.0	6.3	6.5	5.5	3.7	3.6	5.5
1986	4.0	4.2	4.3	3.7	4.7	5.8	5.2	5.3	4.8	4.9	4.2	4.1	4.6
1987	4.2	4.1	4.3	3.9	4.6	4.6	4.3	4.6	4.6	4.3	3.8	4.0	4.3
1988	3.9	3.9	4.0	4.3	4.1	5.1	5.2	4.6	4.4	4.9	3.9	4.3	4.4
1989	4.2	3.8	3.7	3.8	3.5	3.4	3.3	3.2	2.8	2.6	2.4	2.6	3.2
1990	4.1	4.3	4.4	4.1	4.3	4.3	3.7	3.8	3.9	4.2	3.7	4.1	4.1
1991	3.8	3.9	3.6	4.3	4.0	4.1	4.0	3.5	3.3	3.9	4.2	3.4	3.8
1992	3.3	2.9	3.3	3.2	3.1	3.6	3.6	3.4	3.6	3.2	3.2	3.0	3.3
1993	2.7	3.5	3.7	3.8	3.8	4.4	3.8	4.1	4.1	3.9	3.8	3.8	3.8
1994	4.0	3.8	3.9	4.0	4.0	4.1	4.2	3.9	4.0	3.9	4.0	3.9	4.0
1995	3.1	3.3	3.4	3.4	3.6	4.2	3.5	3.6	3.4	3.4	3.0	2.8	3.4
1996	2.7	2.8	3.2	3.2	3.8	3.6	3.3	3.3	3.5	3.1	2.9	2.6	3.2
1997	3.2	3.3	3.5	3.4	3.4	3.3	3.2	3.2	3.5	3.1	3.2	3.0	3.3
1998	2.8	3.1	3.4	3.2	3.4	3.5	3.5	3.5	3.9	3.5	3.3	3.0	3.4
1999	3.0	3.4	3.5	3.4	3.5	3.6	3.6	3.6	3.9	3.6	3.8	3.2	3.5
2000	2.6	3.0	2.9	3.1	3.5	3.1	3.5	3.3	3.3	2.7	2.8	2.7	3.1
2001	2.6	3.2	3.0	2.9	3.1	3.5	3.1	3.0	3.4	3.3	2.6	2.6	3.1
2002	2.8	2.7	3.0	3.1	3.0	3.4	3.0	3.1	3.2	3.2	2.7	2.7	3.0

AVERAGE LENGTH OF STAY, TOURIST ARRIVALS, 2000 - 2002

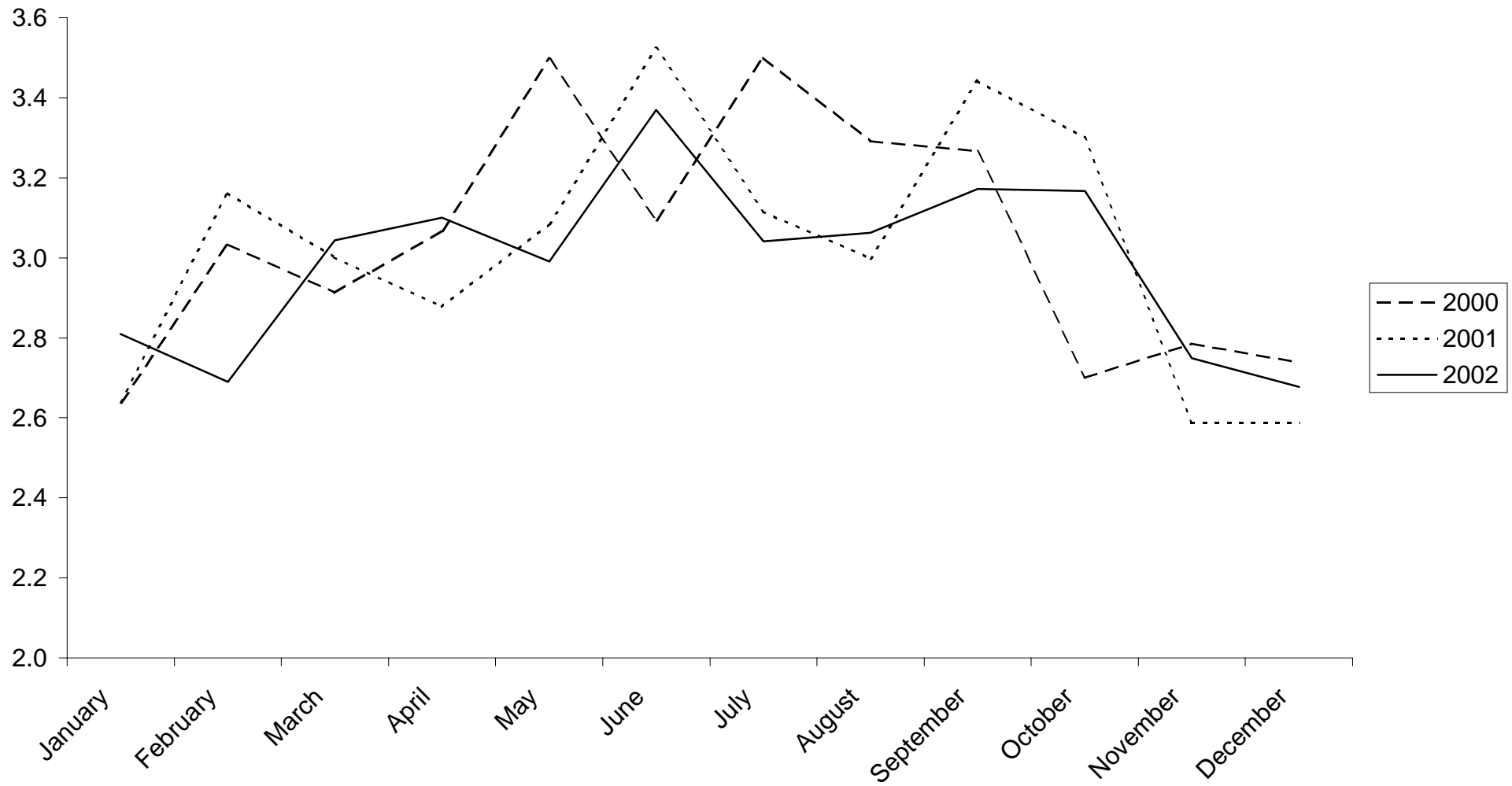
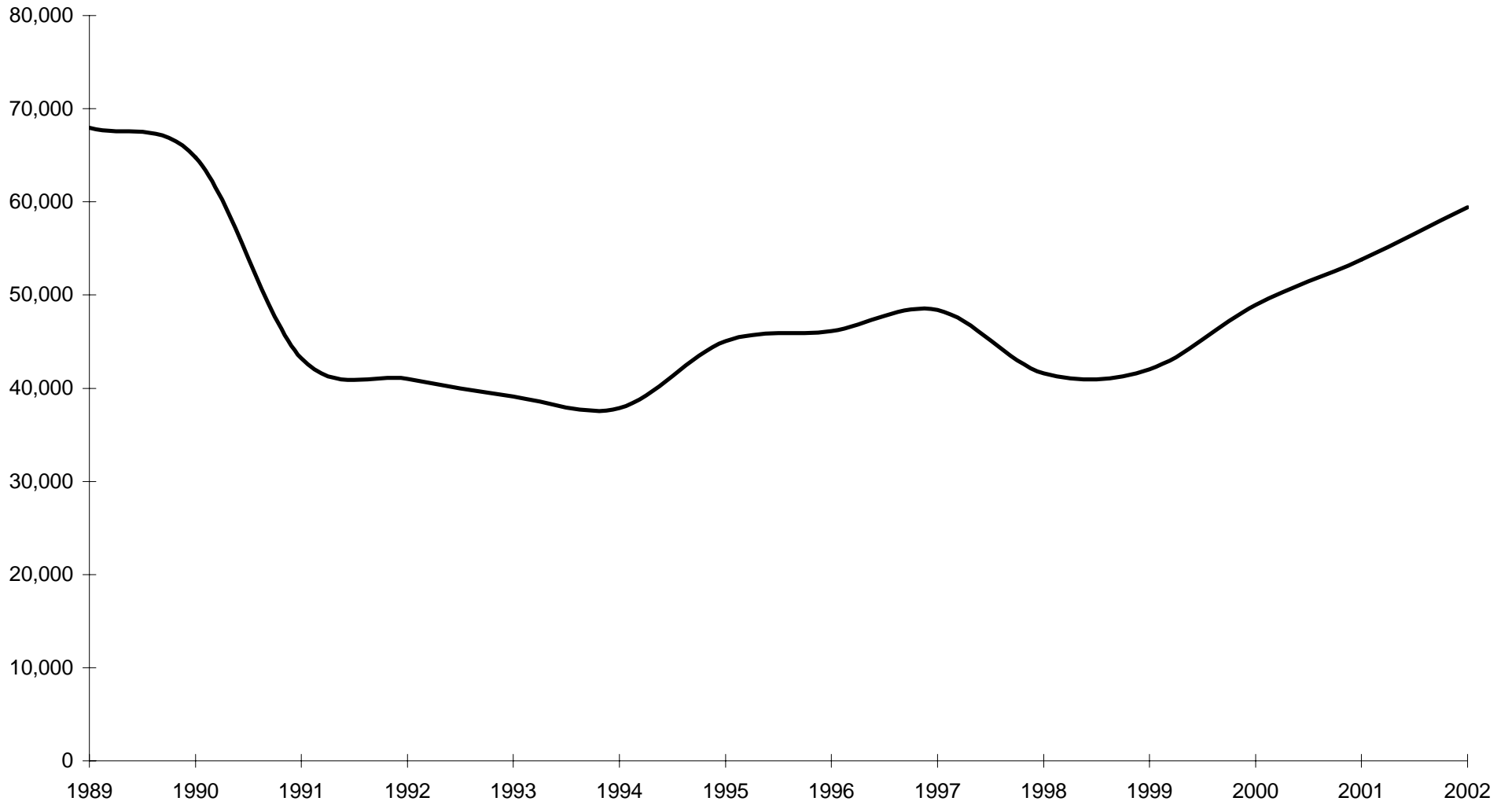


Table 8: Summary of Hotel Statistics, 1969 - 2002

YEAR	ARRIVALS IN HOTELS	SLEEPER NIGHTS	% OCCUPANCY	AV. LENGTH OF STAY (NIGHTS)
1969	48,755	235,235	57.6	4.8
1970	41,774	231,785	48.8	5.5
1971	35,740	214,071	42.4	6.0
1972	33,359	234,228	51.5	7.0
1973	37,012	248,238	51.2	6.7
1974	39,758	271,225	49.5	6.8
1975	45,894	307,913	53.0	6.7
1976	34,933	244,804	43.1	7.0
1977	31,401	207,593	39.4	6.6
1978	39,102	257,295	47.8	6.6
1979	44,569	296,335	53.0	6.6
1980	41,308	255,862	46.5	6.2
1981	33,417	187,679	36.2	5.6
1982	34,896	223,429	42.2	6.4
1983	33,142	209,930	38.4	6.3
1984	35,690	225,873	41.3	6.3
1985	55,119	281,525	51.0	5.1
1986	56,525	266,223	51.3	4.6
1987	64,349	279,377	52.3	4.3
1988	64,942	286,295	52.0	4.4
1989	67,934	220,083	44.0	3.2
1990	64,793	196,516	40.8	3.0
1991	43,193	178,053	35.5	4.1
1992	40,986	156,947	31.6	3.8
1993	39,123	157,215	40.2	4.0
1994	37,851	149,292	37.2	3.9
1995	45,056	144,453	39.2	3.2
1996	46,142	140,596	37.8	3.1
1997	48,420	143,972	39.0	3.0
1998	41,616	144,538	43.1	3.5
1999	42,031	153,583	43.7	3.7
2000	48,949	164,232	44.6	3.4
2001	53,776	178,951	48.9	3.3
2002	59,417	182,444	49.7	3.1

Source: 1969 - 1970: Gibraltar Tourist Office
1971 to date: Statistics Office

ARRIVALS AT HOTELS, 1989 - 2002



AVERAGE LENGTH OF STAY, 1989 - 2002

