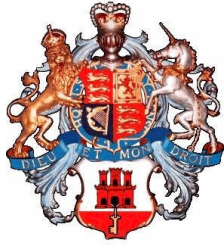


H.M. GOVERNMENT OF GIBRALTAR

HOTEL OCCUPANCY SURVEY 2011

STATISTICS OFFICE



H.M. GOVERNMENT OF GIBRALTAR

HOTEL OCCUPANCY

SURVEY

2011

STATISTICS OFFICE

H.M. Government of Gibraltar
Statistics Office

Statistics On-line

Copies of the Hotel Occupancy Survey can be obtained, free of charge from the Statistics Office and are also available electronically on the Gibraltar Government Website (www.gibraltar.gov.gi).

Historical data can be downloaded from previous copies of the report available on-line.

Comments and requests for general information should be addressed to:

Statistics Office
99 Harbours Walk
The New Harbours
Gibraltar

Or

E-mail: statistics@gibraltar.gov.gi

Tel: +350 20075515/ +350 20075490

Fax: +350 20051160

PREFACE

The Statistics (Hotel Occupancy Survey) Order 1971 requires that the Government Statistician prepares a report and summary of the findings of the Hotel Occupancy Survey to be laid before the Gibraltar Parliament.

This report contains a summary of the statistics collected for the years 1985 – 2011.

I must express my thanks to the establishments for their continued co-operation in the conduct of this Survey.

GOVERNMENT STATISTICIAN

DEFINITIONS AND NOTES

- (a) **Tourist:** A tourist is a person who is primarily in Gibraltar for the purpose of a holiday. It is nevertheless up to the discretion of the individual hotels who to include under this category.
- (b) **Guest Nights:** Calculated on the basis of “one guest x one night”.
- (c) **Room Nights:** Calculated on the basis of “one room x one night”.
- (d) **Sleeper Occupancy:** Calculated as the percentage of guest nights sold over guest nights offered. It should be noted that this measure does not necessarily give an accurate indication of the ability of the hotel to accept more guests, (e.g. one person staying in a room with two beds gives a 50% sleeper occupancy and a 100% room occupancy).
- (e) **Room Occupancy:** Calculated as the percentage of room nights sold over room nights offered.
- (f) **Abbreviations:**
 - GNS - Guest Nights Sold.
 - GNO - Guest Nights Offered.
 - RNS - Room Nights Sold.
 - RNO - Room Nights Offered.
- (g) In interpreting the figures it should be noted that:
 - (i) As from September 1992, the Montarik Hotel is not included.
 - (ii) As from November 1992, the Gibraltar Beach Hotel is not included.
 - (iii) The Sunrise Motel is included for the period January 1992 to December 1994 and re-included as from January 2007.
 - (iv) The Cannon Hotel is included with effect from July 1995.
 - (v) The Emile Youth Hostel and Herald Travel Apartments are included with effect from January 2006.
 - (vi) The Continental Hotel is included for the period January 1986 to July 2008.
 - (vii) The Governor’s Inn Apartments are included for the period January 2006 to December 2010.
- (h) This Survey is based on the figures provided by the Caleta Hotel, O’Callaghan Elliott Hotel, Rock Hotel, Bristol Hotel, Queens Hotel, Cannon Hotel, Emile Youth Hostel, Herald Travel Apartments and Sunrise Motel.

Contents

1. General	
1.1 General Analysis, 1985 - 2011	1-3
2. Room Nights Sold and Offered	
2.1 Room Nights Sold (All Arrivals), 2005 - 2009	4
2.2 Room Nights Offered (All Arrivals), 2005 - 2009	4
2.3 Room Nights Sold and Offered (All Arrivals), 2010 - 2011	5
2.4 Room Nights Sold (Tourist Arrivals), 2005 - 2009	6
2.5 Room Nights Offered (Tourist Arrivals), 2005 - 2009	6
2.6 Room Nights Sold and Offered (Tourist Arrivals), 2010 - 2011	7
3. Room Occupancy Rates	
3.1 Room Occupancy Rates (All Arrivals), 2001 - 2005	8
3.2 Room Occupancy Rates (Tourist Arrivals), 2001 - 2005	8
3.3 Room Occupancy Rates (All Arrivals), 2006 - 2011	9
3.4 Room Occupancy Rates (Tourist Arrivals), 2006 - 2011	10
4. Number of Arrivals	
4.1 Number of Arrivals by Month (All Arrivals), 1985 - 1991	11
4.2 Number of Arrivals by Month (Tourist Arrivals), 1985 - 1991	11
4.3 Number of Arrivals by Month (All Arrivals), 1992 - 1998	12
4.4 Number of Arrivals by Month (Tourist Arrivals), 1992 - 1998	12
4.5 Number of Arrivals by Month (All Arrivals), 1999 - 2005	13
4.6 Number of Arrivals by Month (Tourist Arrivals), 1999 - 2005	13
4.7 Number of Arrivals by Month (All Arrivals), 2006 - 2011	14
4.8 Number of Arrivals by Month (Tourist Arrivals), 2006 - 2011	15
5. Guest Nights Sold/Offered, Sleeper Occupancy Rates, (All Arrivals)	
5.1 Guest Nights Sold/Offered, Sleeper Occupancy Rates, 1985 - 1988	16
5.2 Guest Nights Sold/Offered, Sleeper Occupancy Rates, 1989 - 1992	16
5.3 Guest Nights Sold/Offered, Sleeper Occupancy Rates, 1993 - 1996	17
5.4 Guest Nights Sold/Offered, Sleeper Occupancy Rates, 1997 - 2000	17
5.5 Guest Nights Sold/Offered, Sleeper Occupancy Rates, 2001 - 2004	18
5.6 Guest Nights Sold/Offered, Sleeper Occupancy Rates, 2005 - 2008	18
5.7 Guest Nights Sold, 2009 - 2011	19
5.8 Guest Nights Offered, 2009 - 2011	20
5.9 Sleeper Occupancy, 2009 - 2011	21
6. Guest Nights Sold/Offered, Sleeper Occupancy Rates, (Tourist Arrivals)	
6.1 Guest Nights Sold/Offered, Sleeper Occupancy Rates, 1985 - 1988	22
6.2 Guest Nights Sold/Offered, Sleeper Occupancy Rates, 1989 - 1992	22
6.3 Guest Nights Sold/Offered, Sleeper Occupancy Rates, 1993 - 1996	23
6.4 Guest Nights Sold/Offered, Sleeper Occupancy Rates, 1997 - 2000	23
6.5 Guest Nights Sold/Offered, Sleeper Occupancy Rates, 2001 - 2004	24
6.6 Guest Nights Sold/Offered, Sleeper Occupancy Rates, 2005 - 2008	24
6.7 Guest Nights Sold, 2009 - 2011	25
6.8 Guest Nights Offered, 2009 - 2011	26
6.9 Sleeper Occupancy Rates, 2009 - 2011	27
7. Average Length of Stay (Nights)	
7.1 Average Length of Stay Per Person (All Arrivals), 2000 - 2011	28
7.2 Average Length of Stay Per Person (Tourist Arrivals), 2000 - 2011	29
8. Summary	
8.1 Summary of Hotel Statistics, 1985 - 2011	30

1: General

1.1 General Analysis, 1985 - 2011

Year	All visitors							
	(000's)	%		(000's)	%		Average length of stay	
Total arrivals	RNO	RNS	Room occupancy	GNO	GNS	Sleeper occupancy		
1985	55,119	n/a	n/a	n/a	552	282	51.0	5.1
1986	56,525	n/a	n/a	n/a	519	266	51.3	4.6
1987	64,349	n/a	n/a	n/a	535	278	52.3	4.3
1988	64,942	n/a	n/a	61.3	551	286	52.0	4.4
1989	67,934	n/a	n/a	53.3	501	220	44.0	3.2
1990	64,793	n/a	n/a	51.3	481	197	40.8	3.0
1991	43,193	n/a	n/a	50.6	502	178	35.5	4.1
1992	40,986	237	98	41.2	497	157	31.6	3.8
1993	39,123	195	94	48.4	391	157	40.2	4.0
1994	37,851	199	89	44.5	401	149	37.2	3.9
1995	45,056	192	88	46.1	369	144	39.2	3.2
1996	46,142	191	83	43.3	372	141	37.8	3.1
1997	48,420	190	90	47.3	370	144	39.0	3.0
1998	41,616	173	93	53.6	335	145	43.1	3.5
1999	42,031	179	99	55.3	351	154	43.7	3.7
2000	48,949	179	105	58.9	368	164	44.6	3.4
2001	53,776	179	115	64.2	366	179	48.9	3.3
2002	59,417	183	118	64.4	367	182	49.7	3.1
2003	61,743	186	119	64.2	367	188	51.2	3.0
2004	61,710	186	126	68.2	366	202	55.1	3.3
2005	58,796	177	122	68.6	349	196	56.2	3.3
2006	59,194	200	119	59.2	406	192	47.3	3.2
2007	63,691	220	127	57.8	434	200	45.9	3.1
2008	69,630	219	133	60.6	425	207	48.7	3.0
2009	64,691	214	123	57.4	416	192	46.2	3.0
2010	58,692	215	113	52.8	415	178	42.8	3.0
2011	60,615	209	126	60.0	402	198	49.2	3.3

Notes:

(i) RNO - Room Nights Offered.

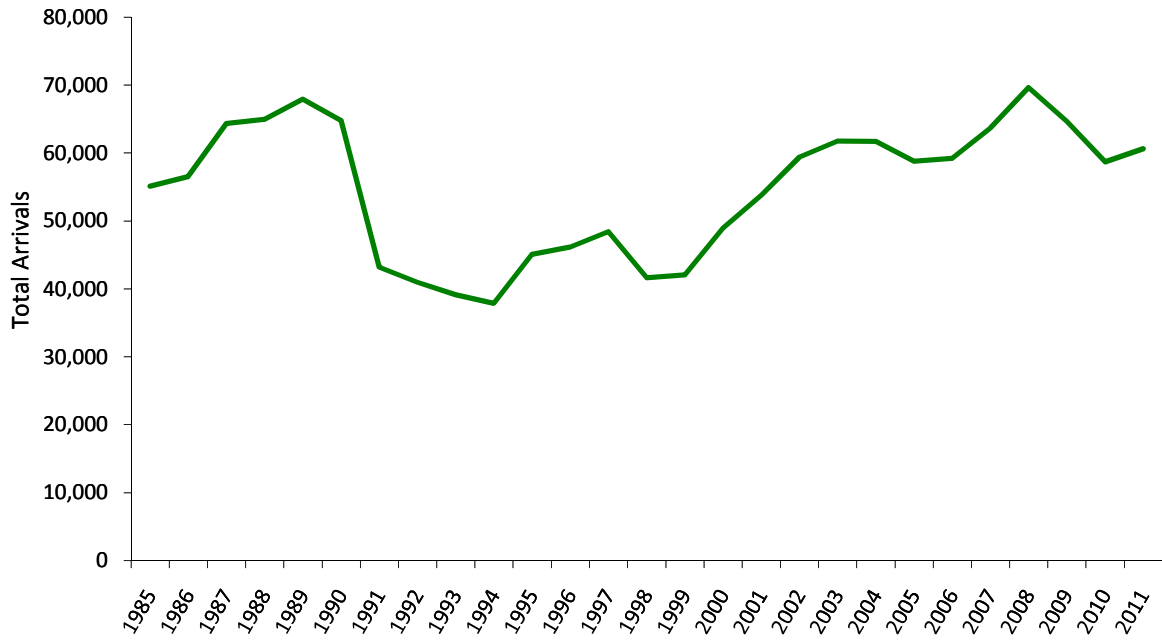
(ii) RNS - Room Nights Sold.

(iii) GNO - Guest Nights Offered.

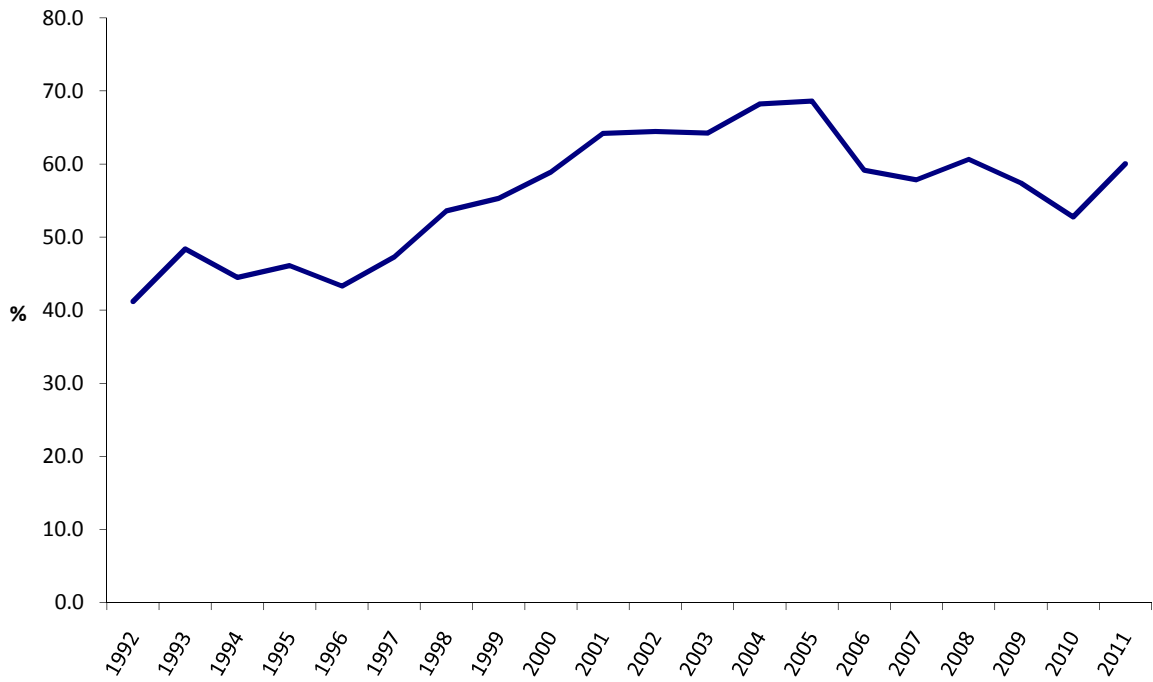
(iv) GNS - Guest Nights Sold.

(v) With effect from January 1992, hotels were required under the legislation to submit returns which included the % room occupancy figures. For the period 1988 to 1991, these figures were provided voluntarily by the hotels.

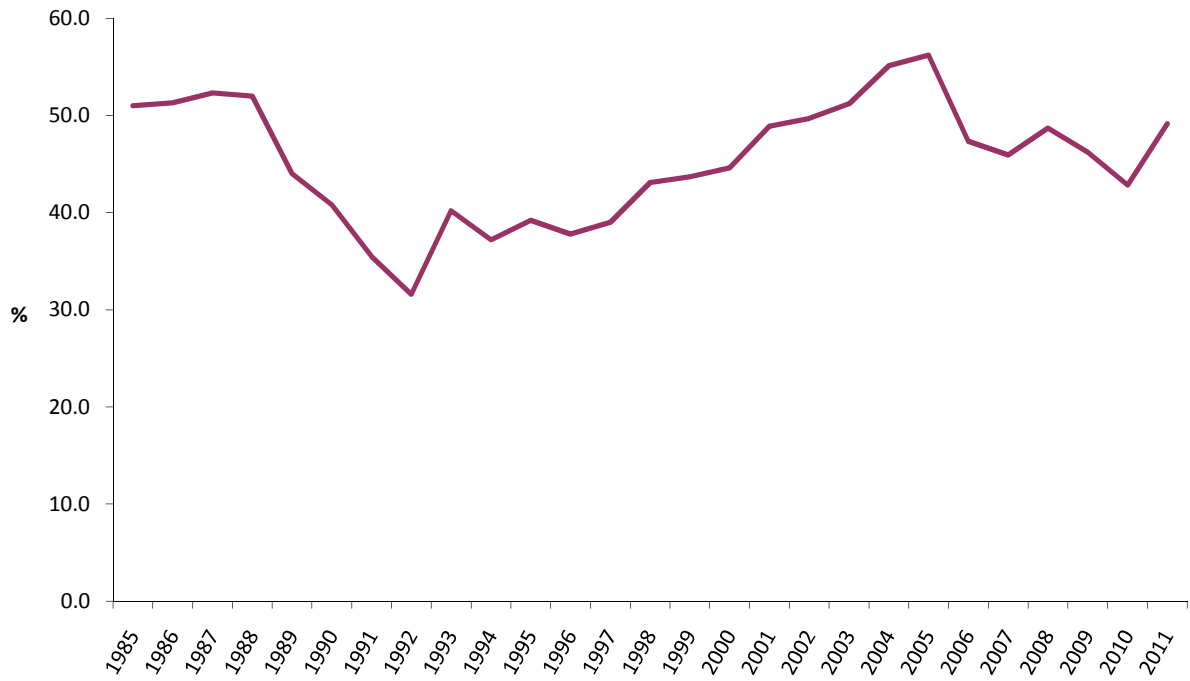
All Arrivals at Hotels, 1985 - 2011



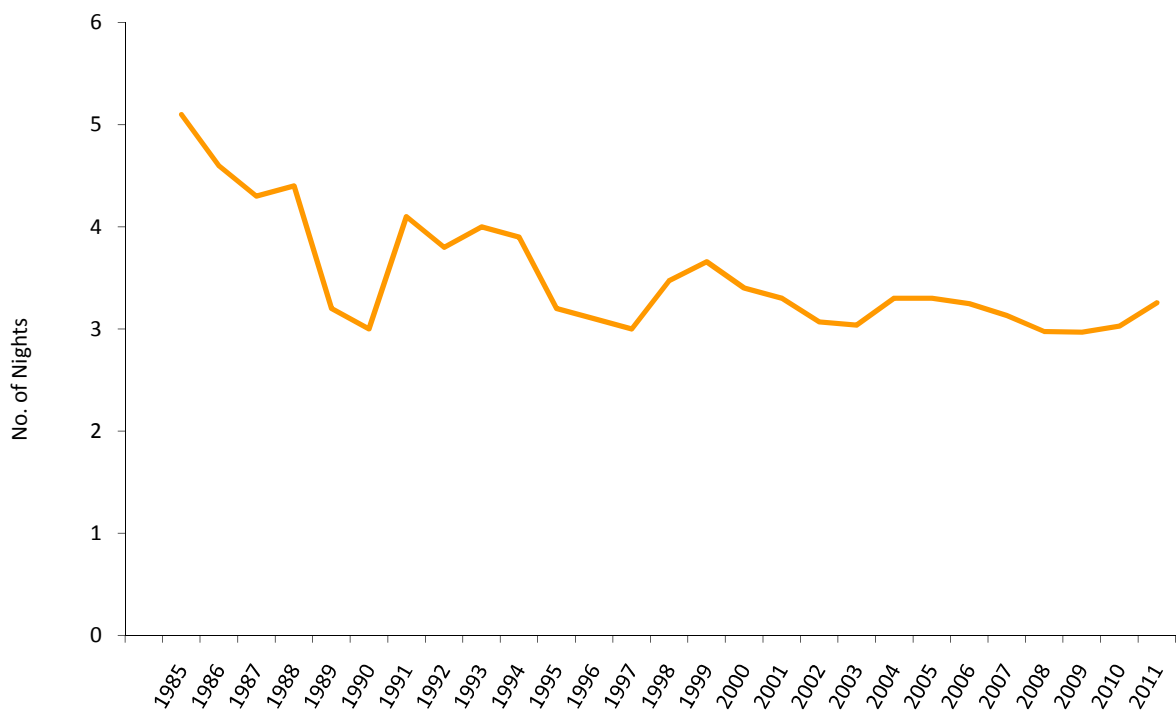
Room Occupancy Rates (All Arrivals), 1992 - 2011



Sleeper Occupancy Rates (All Arrivals), 1985 - 2011



Average Length of Stay (All Arrivals), 1985 - 2011



2: Room Nights Sold and Offered

2.1 Room Nights Sold (All Arrivals), 2005 - 2009

	Room nights sold (000's)				
	2005	2006	2007	2008	2009
January	8.4	7.6	8.2	9.8	8.5
February	10.7	8.2	9.3	9.3	10.1
March	9.9	11.0	9.7	9.3	11.4
April	10.7	10.0	10.8	11.1	10.5
May	11.3	10.6	11.3	12.2	11.0
June	10.7	11.3	11.8	11.9	10.8
July	10.1	10.9	10.7	12.1	11.0
August	10.3	9.7	12.1	14.0	11.2
September	11.4	11.7	13.1	13.1	11.5
October	12.1	11.4	13.1	12.9	11.0
November	9.0	8.9	10.2	9.5	8.4
December	7.0	7.3	7.3	7.5	7.4
Total	121.6	118.6	127.4	132.6	122.9

2.2 Room Nights Offered (All Arrivals), 2005 - 2009

	Room nights offered (000's)				
	2005	2006	2007	2008	2009
January	15.6	16.9	18.9	18.7	18.0
February	13.5	15.4	17.1	17.5	16.3
March	14.9	16.9	18.9	18.8	18.3
April	14.6	16.5	18.1	18.1	17.6
May	15.3	16.9	18.5	18.7	18.3
June	14.3	16.4	17.8	18.2	17.7
July	14.8	17.1	18.4	18.7	18.2
August	14.7	17.1	18.4	18.3	18.2
September	14.2	16.6	18.2	17.8	17.5
October	14.7	17.1	18.8	18.3	18.3
November	14.6	16.5	18.3	17.7	17.6
December	16.1	17.0	18.8	17.9	18.3
Total	177.2	200.4	220.2	218.7	214.2

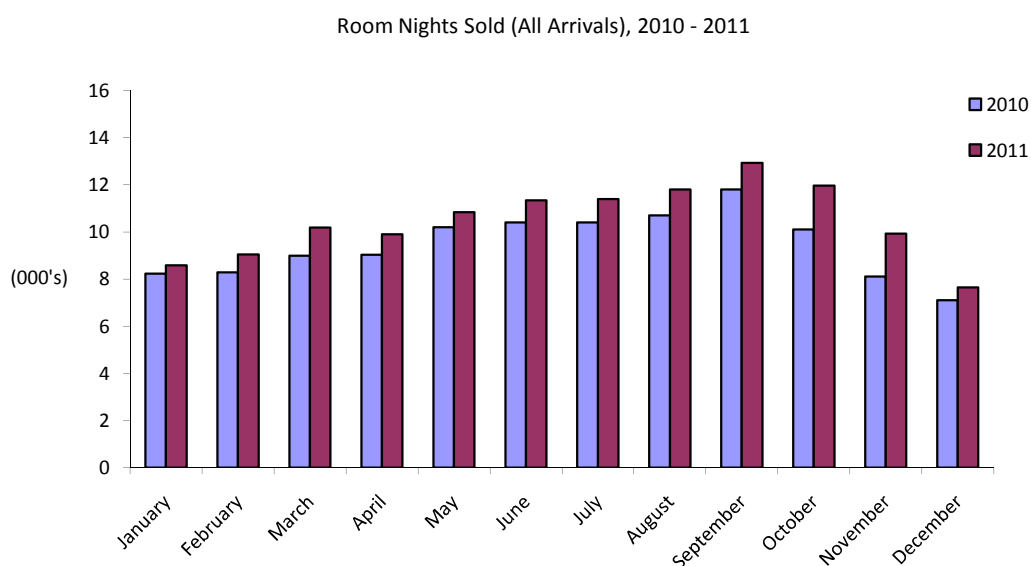
Note:

(i) Yearly totals have been rounded off and need not necessarily equal the sum of the rounded-off monthly figures.

2: Room Nights Sold and Offered

2.3 Room Nights Sold and Offered (All Arrivals), 2010 - 2011

	Room nights sold (000's)		Room nights offered (000's)	
	2010	2011	2010	2011
January	8.2	8.6	18.2	17.7
February	8.3	9.0	16.4	15.9
March	9.0	10.2	18.2	17.7
April	9.0	9.9	17.6	17.1
May	10.2	10.8	18.3	18.0
June	10.4	11.3	17.6	17.5
July	10.4	11.4	18.1	18.1
August	10.7	11.8	18.1	17.8
September	11.8	12.9	17.7	17.5
October	10.1	12.0	18.4	17.4
November	8.1	9.9	17.7	17.0
December	7.1	7.6	18.3	17.5
Total	113.3	125.6	214.8	209.2



Note:

(i) Yearly totals have been rounded off and need not necessarily equal the sum of the rounded-off monthly figures.

2: Room Nights Sold and Offered

2.4 Room Nights Sold (Tourist Arrivals), 2005 - 2009

	Room nights sold (000's)				
	2005	2006	2007	2008	2009
January	5.1	4.2	4.5	5.0	4.8
February	6.7	4.6	4.2	4.7	5.7
March	6.3	6.1	5.8	4.8	6.7
April	7.1	6.1	6.2	6.0	6.7
May	7.8	7.0	6.0	6.6	6.4
June	7.8	7.9	6.3	6.4	6.9
July	6.3	6.7	6.3	6.4	6.7
August	6.8	6.9	7.1	6.6	5.9
September	7.5	8.3	7.3	6.9	6.8
October	8.1	8.4	7.7	7.0	6.8
November	5.3	6.1	5.3	5.5	4.4
December	4.0	4.2	4.0	3.9	3.6
Total	78.7	76.5	70.6	69.8	71.7

2.5 Room Nights Offered (Tourist Arrivals), 2005 - 2009

	Room nights offered (000's)				
	2005	2006	2007	2008	2009
January	15.6	16.9	18.9	18.7	18.0
February	13.5	15.4	17.1	17.5	16.3
March	14.9	16.9	18.9	18.8	18.3
April	14.6	16.5	18.1	18.1	17.6
May	15.3	16.9	18.5	18.7	18.3
June	14.3	16.4	17.8	18.2	17.7
July	14.8	17.1	18.4	18.7	18.2
August	14.7	17.1	18.4	18.3	18.2
September	14.2	16.6	18.2	17.8	17.5
October	14.7	17.1	18.8	18.3	18.3
November	14.6	16.5	18.3	17.7	17.6
December	16.1	17.0	18.8	17.9	18.3
Total	177.2	200.4	220.2	218.7	214.2

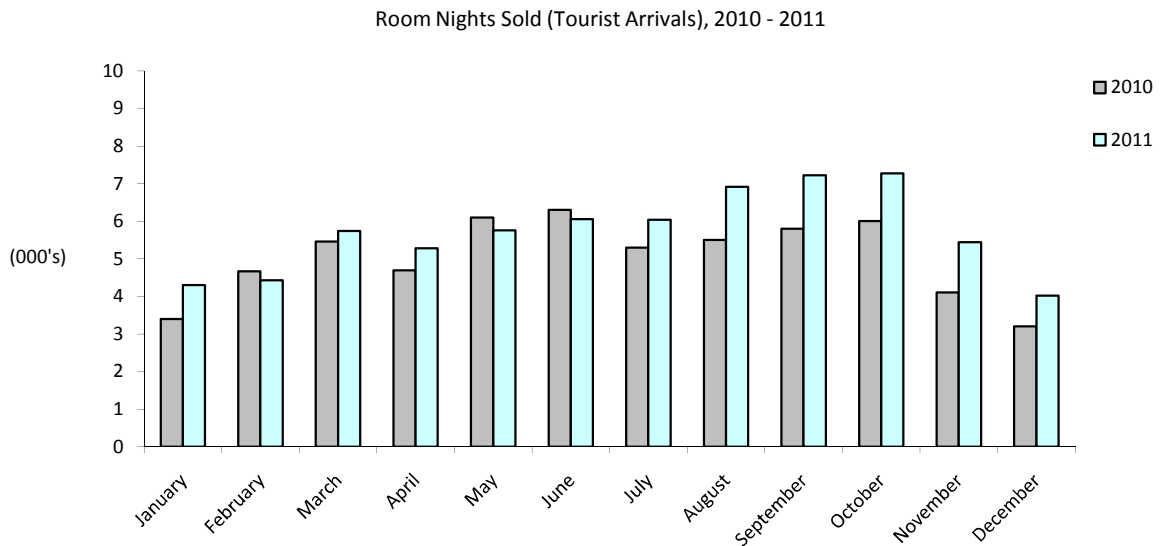
Note:

(i) Yearly totals have been rounded off and need not necessarily equal the sum of the rounded-off monthly figures.

2: Room Nights Sold and Offered

2.6 Room Nights Sold and Offered (Tourist Arrivals), 2010 - 2011

	Room nights sold (000's)		Room nights offered (000's)	
	2010	2011	2010	2011
January	3.4	4.3	18.2	17.7
February	4.7	4.4	16.4	15.9
March	5.5	5.7	18.2	17.7
April	4.7	5.3	17.6	17.1
May	6.1	5.8	18.3	18.0
June	6.3	6.1	17.6	17.5
July	5.3	6.0	18.1	18.1
August	5.5	6.9	18.1	17.8
September	5.8	7.2	17.7	17.5
October	6.0	7.3	18.4	17.4
November	4.1	5.4	17.7	17.0
December	3.2	4.0	18.3	17.5
Total	60.4	68.5	214.8	209.2



Note:

(i) Yearly totals have been rounded off and need not necessarily equal the sum of the rounded-off monthly figures.

3: Room Occupancy Rates

3.1 Room Occupancy Rates (All Arrivals), 2001 - 2005

	Room occupancy rates (%)				
	2001	2002	2003	2004	2005
January	44.4	42.3	46.7	48.9	54.3
February	55.1	56.6	58.7	58.6	79.2
March	67.3	62.4	66.8	71.3	66.2
April	66.0	61.1	66.4	61.3	73.2
May	71.6	67.6	68.4	69.8	73.6
June	75.3	72.0	76.6	75.9	75.3
July	67.0	71.4	66.3	73.0	68.3
August	66.0	67.0	63.9	75.0	70.0
September	80.7	84.0	79.1	87.4	80.0
October	73.3	72.9	71.1	73.9	82.2
November	58.8	66.9	64.1	69.2	62.0
December	44.8	47.9	43.1	52.2	43.7
Total	64.2	64.4	64.2	68.2	68.6

3.2 Room Occupancy Rates (Tourist Arrivals), 2001 - 2005

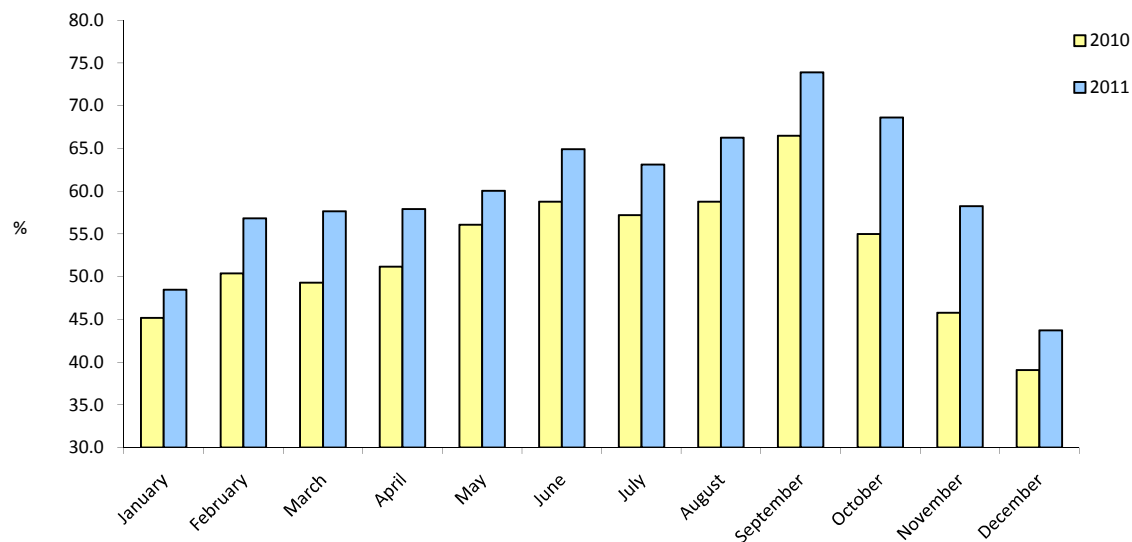
	Room occupancy rates (%)				
	2001	2002	2003	2004	2005
January	26.1	25.4	27.2	28.6	32.5
February	33.7	35.1	31.3	36.5	49.5
March	39.4	43.3	40.9	43.8	42.2
April	35.8	41.2	37.9	39.8	48.9
May	42.6	45.5	40.5	46.1	50.7
June	48.2	40.8	45.5	45.5	54.6
July	44.5	47.1	40.9	46.9	42.5
August	44.7	44.8	42.5	48.8	46.1
September	55.2	56.8	53.6	59.8	53.0
October	48.9	44.9	47.1	50.6	55.0
November	37.2	36.6	40.3	44.2	36.5
December	27.3	28.8	25.1	33.2	24.8
Total	40.3	40.9	39.4	43.7	44.4

3: Room Occupancy Rates

3.3 Room Occupancy Rates (All Arrivals), 2006 - 2011

	Room occupancy rates (%)					
	2006	2007	2008	2009	2010	2011
January	45.1	43.3	52.3	47.3	45.2	48.5
February	53.0	54.4	52.9	62.1	50.4	56.8
March	65.1	51.3	49.7	62.3	49.3	57.7
April	60.3	59.4	61.2	59.8	51.2	57.9
May	62.6	61.0	65.1	60.5	56.1	60.1
June	68.6	66.2	65.4	61.1	58.8	64.9
July	64.0	58.1	64.4	60.5	57.2	63.1
August	56.7	65.8	76.2	61.8	58.8	66.3
September	70.8	71.9	73.5	65.6	66.5	73.9
October	66.7	69.3	70.7	60.0	55.0	68.7
November	54.0	55.4	53.9	47.8	45.8	58.3
December	42.9	38.8	41.9	40.3	39.1	43.7
Total	59.2	57.8	60.6	57.4	52.8	60.0

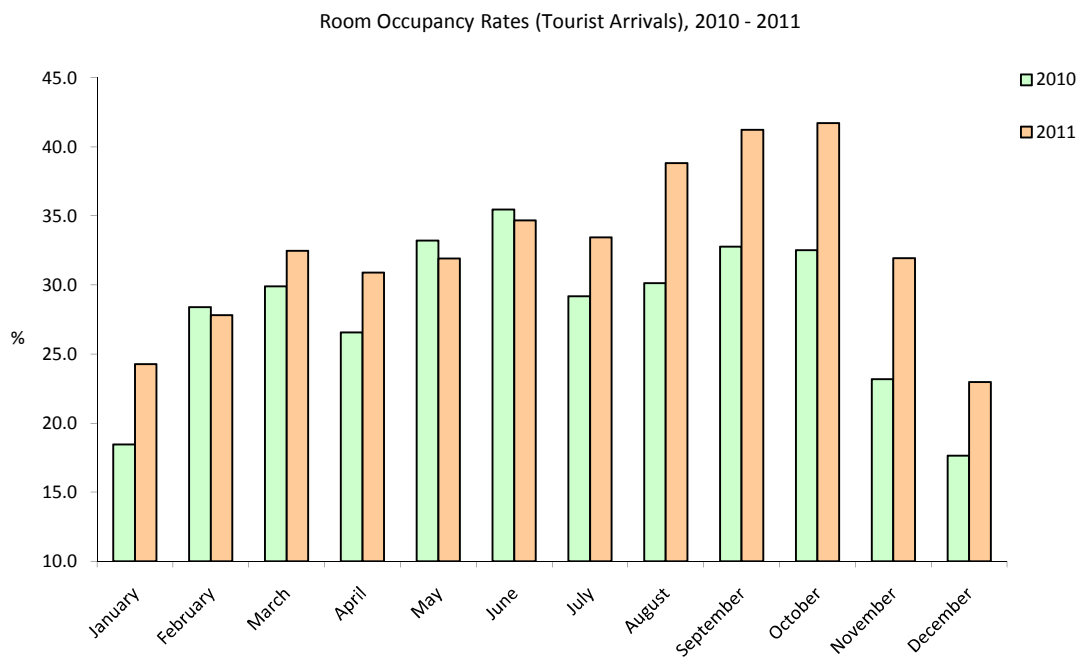
Room Occupancy Rates (All Arrivals), 2010 - 2011



3: Room Occupancy Rates

3.4 Room Occupancy Rates (Tourist Arrivals), 2006 - 2011

	Room occupancy rates (%)					
	2006	2007	2008	2009	2010	2011
January	24.7	23.9	26.6	27.0	18.5	24.3
February	29.9	24.8	26.7	35.2	28.4	27.8
March	35.8	30.8	25.7	36.9	29.9	32.5
April	36.9	34.0	33.3	37.9	26.6	30.9
May	41.7	32.2	35.2	35.2	33.2	31.9
June	47.8	35.4	35.4	38.9	35.5	34.7
July	39.4	34.4	33.9	37.0	29.2	33.5
August	40.5	38.3	35.8	32.6	30.2	38.8
September	50.3	40.0	38.8	39.0	32.8	41.2
October	48.8	40.7	38.3	37.2	32.5	41.7
November	36.8	29.1	30.9	25.2	23.2	31.9
December	24.9	21.3	22.0	19.7	17.6	23.0
Total	38.2	32.1	31.9	33.5	28.1	32.7



4: Number of Arrivals

4.1 Number of Arrivals by Month (All Arrivals), 1985 - 1991

	Number of arrivals by month (000's)						
	1985	1986	1987	1988	1989	1990	1991
January	2.6	3.1	4.1	4.6	3.4	3.4	3.4
February	4.5	4.0	4.6	4.7	4.3	4.1	3.4
March	4.9	4.6	6.3	6.3	5.2	7.9	3.9
April	4.6	4.4	6.2	6.1	5.3	8.4	3.6
May	4.6	5.7	5.8	6.0	4.6	6.0	4.2
June	4.6	5.1	5.1	5.8	5.0	5.3	3.2
July	5.2	4.5	4.4	5.4	6.6	6.3	3.9
August	5.4	5.2	5.1	5.3	5.9	4.6	3.5
September	5.4	5.5	6.2	5.8	7.4	5.8	4.3
October	5.1	5.0	5.3	4.9	7.7	5.0	4.7
November	4.6	4.9	6.0	5.8	6.7	4.1	2.6
December	3.6	4.6	5.2	4.2	5.8	3.9	2.5
Total	55.1	56.6	64.3	64.9	67.9	64.8	43.2

4.2 Number of Arrivals by Month (Tourist Arrivals), 1985 - 1991

	Number of arrivals by month (000's)						
	1985	1986	1987	1988	1989	1990	1991
January	1.0	2.4	3.7	3.2	2.4	2.0	1.9
February	2.7	2.9	3.5	3.6	3.5	2.4	1.9
March	3.6	3.8	5.0	4.7	4.1	3.0	2.3
April	3.3	3.6	5.0	4.8	4.1	3.4	2.1
May	3.7	4.0	3.8	4.6	3.6	2.8	2.4
June	3.5	3.9	3.5	4.0	4.2	2.3	2.1
July	3.8	3.4	3.6	3.6	3.9	3.1	2.5
August	4.3	4.0	4.1	3.6	4.1	2.5	2.4
September	4.1	4.4	4.8	3.8	4.4	3.1	2.4
October	3.5	4.2	4.8	3.6	5.3	2.6	2.5
November	3.5	4.3	4.8	3.6	4.4	2.1	1.6
December	2.4	2.9	3.4	2.6	3.5	2.0	1.7
Total	39.4	43.8	50.0	45.7	47.5	31.3	26.0

Note:

(i) Yearly totals have been rounded off and need not necessarily equal the sum of the rounded-off monthly figures.

4: Number of Arrivals

4.3 Number of Arrivals by Month (All Arrivals), 1992 - 1998

	Number of arrivals by month (000's)						
	1992	1993	1994	1995	1996	1997	1998
January	2.3	1.9	2.5	2.0	2.8	2.4	3.0
February	3.0	2.4	2.4	2.8	3.4	3.2	2.8
March	3.4	2.9	3.1	3.4	4.0	3.3	3.1
April	3.6	3.0	3.1	4.0	4.1	3.9	3.4
May	4.0	3.8	3.9	3.8	4.2	4.8	3.8
June	4.1	3.5	3.3	3.9	4.1	4.7	3.5
July	3.8	3.3	3.4	4.6	3.8	4.3	3.4
August	3.6	3.3	3.3	4.4	3.9	5.5	4.2
September	4.1	4.4	4.3	5.7	4.7	5.4	4.0
October	3.9	4.5	3.9	4.1	4.3	3.9	4.2
November	2.8	3.5	2.5	3.1	3.3	3.8	3.6
December	2.4	2.5	2.2	3.2	3.5	3.2	2.8
Total	41.0	39.1	37.9	45.1	46.1	48.4	41.6

4.4 Number of Arrivals by Month (Tourist Arrivals), 1992 - 1998

	Number of arrivals by month (000's)						
	1992	1993	1994	1995	1996	1997	1998
January	1.6	1.5	1.7	1.6	2.0	1.5	1.6
February	2.2	1.5	1.7	2.2	2.5	1.9	1.7
March	2.7	2.1	2.1	2.4	2.7	1.9	2.1
April	2.8	2.1	2.1	2.8	3.0	2.2	2.3
May	2.9	2.6	2.4	2.6	2.6	2.8	2.5
June	2.8	2.4	2.3	2.7	2.6	2.7	2.4
July	2.6	2.2	2.4	3.3	2.7	2.8	2.3
August	2.9	2.5	2.3	3.1	3.0	3.3	3.0
September	2.6	2.9	2.9	4.1	3.0	3.1	3.0
October	2.7	2.9	2.7	3.2	3.1	2.8	2.9
November	2.0	2.3	1.7	2.5	2.2	2.0	2.4
December	1.9	1.9	1.6	2.5	2.5	1.9	1.8
Total	29.9	27.0	25.9	33.1	31.9	28.9	27.9

Note:

(i) Yearly totals have been rounded off and need not necessarily equal the sum of the rounded-off monthly figures.

4: Number of Arrivals

4.5 Number of Arrivals by Month (All Arrivals), 1999 - 2005

	Number of arrivals by month (000's)						
	1999	2000	2001	2002	2003	2004	2005
January	2.6	2.2	3.1	3.2	3.7	3.8	4.0
February	2.6	2.8	3.3	4.1	4.4	4.4	4.6
March	3.6	3.9	4.5	4.6	5.4	5.5	5.0
April	3.7	4.2	4.3	4.5	5.0	4.7	5.1
May	3.6	4.8	5.0	5.1	5.6	5.7	5.7
June	3.8	4.8	5.0	4.3	5.9	5.5	5.1
July	3.4	4.0	5.0	5.8	5.2	5.3	5.0
August	4.3	4.6	5.3	5.8	5.9	5.6	5.5
September	4.2	5.6	5.4	6.6	5.8	6.2	5.7
October	4.3	4.8	5.1	6.2	5.6	5.6	5.3
November	3.7	3.9	4.3	5.1	5.4	5.4	4.4
December	2.4	3.3	3.5	4.1	3.9	3.9	3.7
Total	42.1	48.9	53.8	59.4	61.8	61.7	58.8

4.6 Number of Arrivals by Month (Tourist Arrivals), 1999 - 2005

	Number of arrivals by month (000's)						
	1999	2000	2001	2002	2003	2004	2005
January	1.7	1.5	2.3	2.3	2.3	2.7	2.8
February	1.7	1.9	2.4	3.0	2.9	3.0	3.3
March	2.3	2.8	3.2	3.5	3.6	3.8	3.7
April	2.3	3.0	3.1	3.2	3.2	3.4	3.6
May	2.5	3.5	3.5	3.8	3.5	4.4	4.3
June	2.5	3.6	3.4	3.0	3.7	3.8	3.8
July	2.2	2.9	3.7	4.0	3.5	3.9	3.5
August	2.8	3.5	4.1	4.1	4.1	4.2	4.0
September	2.7	4.1	4.1	4.7	4.0	4.6	4.1
October	3.0	3.6	3.8	4.0	3.9	4.1	3.8
November	2.3	2.9	3.4	3.3	3.5	3.8	2.7
December	1.7	2.4	2.5	2.7	2.6	2.8	2.2
Total	27.7	35.9	39.4	41.5	40.8	44.5	41.9

Note:

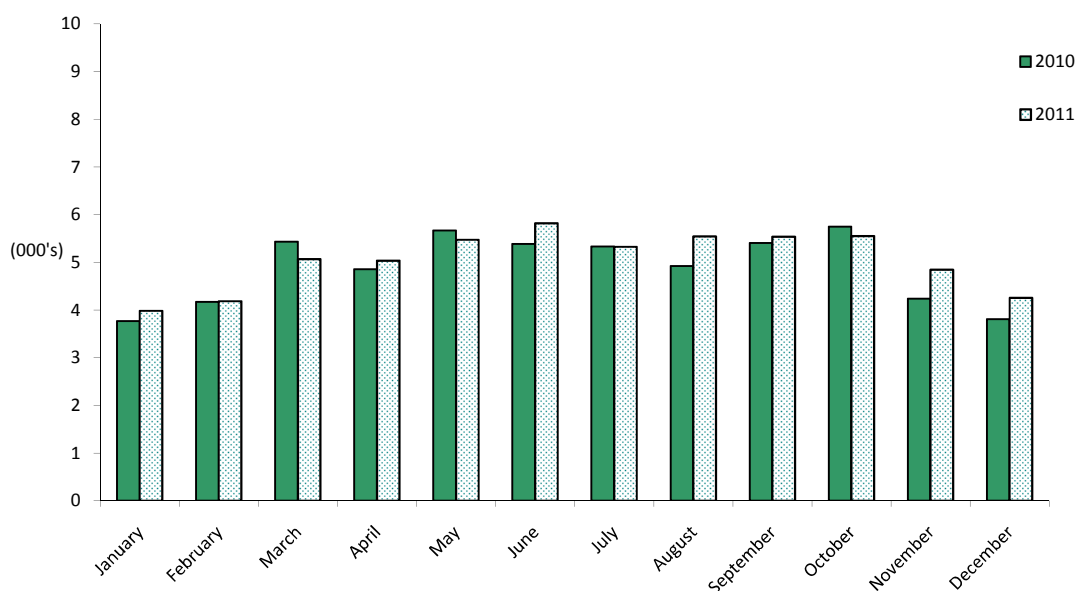
(i) Yearly totals have been rounded off and need not necessarily equal the sum of the rounded-off monthly figures.

4: Number of Arrivals

4.7 Number of Arrivals by Month (All Arrivals), 2006 - 2011

	Number of arrivals (000's)					
	2006	2007	2008	2009	2010	2011
January	4.3	3.9	5.0	4.7	3.8	4.0
February	4.5	4.1	5.1	5.3	4.2	4.2
March	5.5	4.6	5.4	5.8	5.4	5.1
April	5.3	5.0	6.1	6.0	4.9	5.0
May	5.7	5.9	6.9	5.6	5.7	5.5
June	5.5	5.7	5.7	5.7	5.4	5.8
July	5.0	5.4	6.4	5.7	5.3	5.3
August	4.5	6.3	7.1	5.7	4.9	5.5
September	5.4	6.3	6.5	5.6	5.4	5.5
October	5.4	6.8	6.4	5.7	5.7	5.6
November	4.4	5.5	4.9	4.9	4.2	4.8
December	3.8	4.3	4.3	4.1	3.8	4.3
Total	59.2	63.7	69.6	64.7	58.7	60.6

All Arrivals at Hotels, 2010 - 2011



Note:

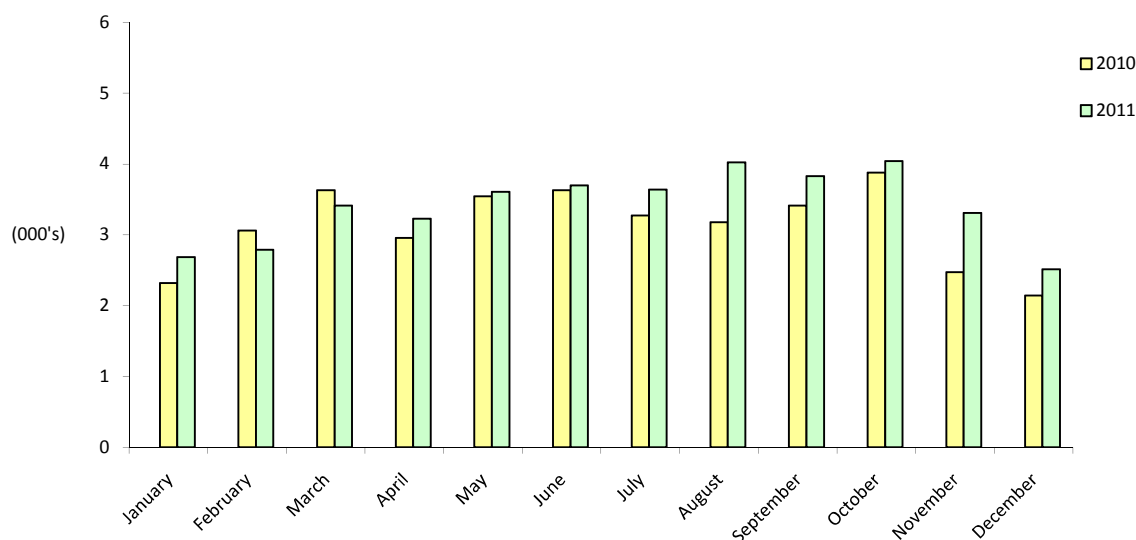
(i) Yearly totals have been rounded off and need not necessarily equal the sum of the rounded-off monthly figures.

4: Number of Arrivals

4.8 Number of Arrivals by Month (Tourist Arrivals), 2006 - 2011

	Number of arrivals (000's)					
	2006	2007	2008	2009	2010	2011
January	2.5	2.4	3.2	3.1	2.3	2.7
February	2.6	2.3	3.0	3.8	3.1	2.8
March	3.6	3.1	3.5	4.4	3.6	3.4
April	3.6	3.1	4.1	4.0	3.0	3.2
May	4.2	3.4	4.2	3.9	3.5	3.6
June	3.9	3.7	3.8	4.1	3.6	3.7
July	3.2	3.6	4.3	4.0	3.3	3.6
August	3.2	3.8	3.8	3.6	3.2	4.0
September	3.8	4.0	4.0	3.9	3.4	3.8
October	3.9	4.6	4.1	4.1	3.9	4.0
November	3.0	3.5	3.5	3.2	2.5	3.3
December	2.2	2.3	2.5	2.4	2.1	2.5
Total	39.8	39.8	44.0	44.5	37.5	40.8

Tourist Arrivals at Hotels, 2010 - 2011



Note:

(i) Yearly totals have been rounded off and need not necessarily equal the sum of the rounded-off monthly figures.

5: Guest Nights Sold/Offered, Sleeper Occupancy Rates

5.1 Guest Nights Sold/Offered, Sleeper Occupancy Rates (All Arrivals), 1985 - 1988

	Guest nights sold (000's)				Guest nights offered (000's)				Sleeper occupancy Rates (%)			
	1985	1986	1987	1988	1985	1986	1987	1988	1985	1986	1987	1988
January	11	13	19	16	45	43	46	46	24.3	30.1	42.1	35.8
February	18	15	18	19	41	38	42	44	42.7	39.0	43.9	42.6
March	25	21	26	26	46	43	46	48	54.0	48.7	57.5	53.6
April	25	18	24	26	45	42	43	45	56.8	42.0	55.6	57.1
May	23	25	25	26	47	45	45	47	50.3	57.2	55.7	55.1
June	31	29	22	29	45	43	44	47	69.4	67.9	49.1	61.6
July	28	23	20	27	48	44	45	48	58.0	51.8	44.5	55.8
August	32	27	26	24	48	46	45	48	67.7	59.7	57.7	50.4
September	32	29	29	26	46	44	45	44	68.2	64.8	65.6	60.4
October	27	26	26	26	48	45	44	46	55.6	59.3	58.8	56.4
November	17	23	24	22	46	43	44	43	36.9	54.1	54.4	51.4
December	13	17	20	19	47	44	46	45	27.3	38.5	42.5	42.6
Total	282	266	279	286	552	520	535	551	51.0	51.3	52.3	52.0

5.2 Guest Nights Sold/Offered, Sleeper Occupancy Rates (All Arrivals), 1989 - 1992

	Guest nights sold (000's)				Guest nights offered (000's)				Sleeper occupancy Rates (%)			
	1989	1990	1991	1992	1989	1990	1991	1992	1989	1990	1991	1992
January	15	11	12	9	42	37	40	42	35.2	31.2	29.4	20.6
February	18	14	13	9	40	37	37	41	46.0	37.3	34.5	22.8
March	22	19	17	14	42	42	44	46	52.0	45.3	37.5	29.6
April	23	23	14	14	42	41	41	42	54.8	55.4	34.0	32.6
May	19	21	17	15	44	42	41	43	41.9	50.4	40.2	35.6
June	19	15	16	16	43	39	44	47	43.9	37.3	35.8	34.8
July	20	18	16	16	43	42	43	45	46.8	43.8	37.9	35.2
August	19	15	16	14	43	41	40	44	45.1	35.2	41.2	32.2
September	19	18	17	16	42	41	44	41	46.0	44.4	39.2	39.7
October	19	18	18	15	40	40	43	42	46.2	44.5	42.5	34.6
November	14	12	13	10	38	40	41	32	38.2	30.2	31.1	32.6
December	13	13	10	9	42	39	45	33	31.2	32.4	22.4	27.0
Total	220	197	178	157	501	481	502	497	44.0	40.8	35.5	31.6

Note:

(i) Yearly totals have been rounded off and need not necessarily equal the sum of the rounded-off monthly figures.

5: Guest Nights Sold/Offered, Sleeper Occupancy Rates

5.3 Guest Nights Sold/Offered, Sleeper Occupancy Rates (All Arrivals), 1993 - 1996

	Guest nights sold (000's)				Guest nights offered (000's)				Sleeper occupancy Rates (%)			
	1993	1994	1995	1996	1993	1994	1995	1996	1993	1994	1995	1996
January	7	10	6	8	33	34	32	32	21.5	29.4	19.0	24.9
February	9	9	10	9	30	30	28	30	30.1	31.3	34.9	29.9
March	12	12	10	12	33	33	31	32	36.2	37.2	33.4	36.3
April	12	12	13	12	32	31	25	31	38.3	39.2	49.5	39.1
May	16	15	13	14	34	35	31	32	45.6	42.5	41.4	43.0
June	15	14	14	13	32	33	30	30	48.0	40.6	46.3	37.2
July	14	15	15	12	32	35	32	31	41.8	42.4	48.2	39.0
August	14	13	15	13	33	35	32	31	44.0	37.0	46.2	42.3
September	18	16	18	16	32	33	31	31	56.2	48.9	58.0	51.9
October	17	15	13	13	34	35	32	31	50.9	43.9	41.1	42.8
November	13	9	9	10	32	33	31	30	39.4	27.8	28.1	31.3
December	10	9	9	9	33	34	32	31	29.6	25.2	26.7	29.0
Total	157	149	144	141	391	401	369	372	40.2	37.2	39.2	37.8

5.4 Guest Nights Sold/Offered, Sleeper Occupancy Rates (All Arrivals), 1997 - 2000

	Guest nights sold (000's)				Guest nights offered (000's)				Sleeper occupancy Rates (%)			
	1997	1998	1999	2000	1997	1998	1999	2000	1997	1998	1999	2000
January	8	7	8	6	31	30	29	31	24.1	24.8	28.8	20.0
February	10	9	9	9	29	25	26	29	34.1	35.4	34.2	30.4
March	10	11	13	12	31	28	29	31	33.0	38.8	45.5	37.5
April	11	11	13	14	31	26	29	30	36.3	42.4	44.3	45.0
May	14	12	13	19	32	27	29	31	45.0	45.6	43.7	60.3
June	13	13	14	17	30	28	29	30	44.4	45.9	49.1	56.6
July	14	13	13	16	31	29	29	31	44.1	43.9	44.5	50.2
August	16	16	16	16	31	29	29	31	51.3	54.4	56.3	51.8
September	16	17	16	19	31	28	29	31	50.7	59.8	56.9	61.7
October	14	15	15	15	31	29	31	31	44.1	50.2	50.0	48.7
November	10	12	14	12	31	28	30	30	31.7	43.8	46.0	38.9
December	9	9	8	11	31	29	31	31	28.2	32.2	25.6	34.1
Total	144	144	154	164	370	336	351	368	39.0	43.1	43.8	44.6

Note:

(i) Yearly totals have been rounded off and need not necessarily equal the sum of the rounded-off monthly figures.

5: Guest Nights Sold/Offered, Sleeper Occupancy Rates

5.5 Guest Nights Sold/Offered, Sleeper Occupancy Rates (All Arrivals), 2001 - 2004

	Guest nights sold (000's)				Guest nights offered (000's)				Sleeper occupancy Rates (%)			
	2001	2002	2003	2004	2001	2002	2003	2004	2001	2002	2003	2004
January	8	9	10	11	31	31	31	29	27.0	30.5	33.1	36.7
February	11	12	13	13	28	28	28	29	40.0	42.9	45.5	45.2
March	15	15	16	17	31	31	31	31	47.9	47.7	51.8	56.3
April	15	14	15	15	30	30	30	30	48.4	46.3	51.1	50.0
May	17	16	17	18	31	31	31	31	55.0	51.3	54.4	57.8
June	18	13	18	18	30	30	30	30	58.3	43.6	60.9	59.4
July	17	18	16	19	31	31	31	31	53.5	56.8	53.2	61.2
August	18	18	18	21	31	31	31	31	57.4	58.8	58.2	65.9
September	20	21	20	22	30	30	30	31	64.6	69.3	64.8	71.7
October	18	19	18	19	31	31	31	31	57.3	61.3	57.0	60.1
November	13	15	15	17	30	30	30	30	43.5	50.9	49.5	55.0
December	11	11	11	13	31	31	31	31	34.1	36.4	34.6	40.1
Total	179	182	188	202	366	367	367	366	48.9	49.7	51.2	55.1

5.6 Guest Nights Sold/Offered, Sleeper Occupancy Rates (All Arrivals), 2005 - 2008

	Guest nights sold (000's)				Guest nights offered (000's)				Sleeper occupancy Rates (%)			
	2005	2006	2007	2008	2005	2006	2007	2008	2005	2006	2007	2008
January	12	12	12	14	31	34	38	36	38.7	34.2	31.3	39.0
February	15	13	14	14	27	31	35	34	58.0	41.2	41.7	39.5
March	15	17	15	14	29	34	38	37	52.8	49.5	39.0	38.9
April	17	16	17	18	28	33	37	35	59.3	49.3	46.8	49.7
May	18	17	16	19	30	34	36	37	60.4	50.7	45.5	52.4
June	18	18	18	19	28	33	35	35	64.5	55.4	51.2	53.1
July	16	19	17	19	29	35	36	36	57.1	54.0	48.2	53.1
August	18	17	20	23	29	35	36	36	62.0	49.3	56.7	64.0
September	20	20	21	21	28	34	35	35	70.1	57.9	59.7	61.3
October	20	18	21	21	29	35	37	36	68.5	52.7	58.2	57.7
November	15	14	16	14	29	34	36	34	52.6	40.7	43.5	42.0
December	11	12	11	12	32	35	37	35	33.7	33.7	30.9	33.6
Total	196	193	200	207	349	406	434	425	56.2	47.3	45.9	48.7

Note:

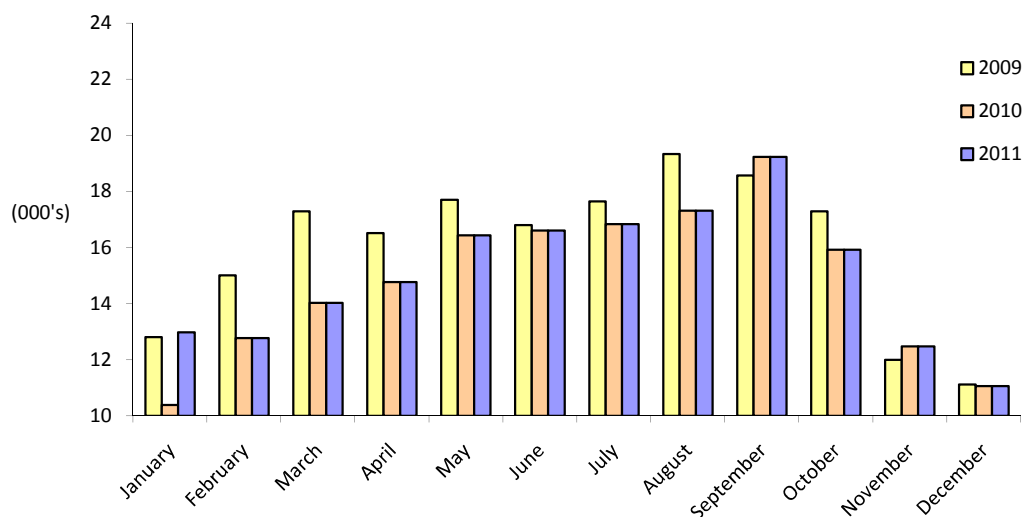
(i) Yearly totals have been rounded off and need not necessarily equal the sum of the rounded-off monthly figures.

5: Guest Nights

5.7 Guest Nights Sold, (All Arrivals), 2009 - 2011

	Guest nights sold (000's)		
	2009	2010	2011
January	12.8	10.4	13.0
February	15.0	12.8	13.3
March	17.3	14.0	15.4
April	16.5	14.8	15.9
May	17.7	16.4	17.2
June	16.8	16.6	18.5
July	17.6	16.8	18.9
August	19.3	17.3	20.2
September	18.6	19.2	21.2
October	17.3	15.9	18.7
November	12.0	12.5	13.5
December	11.1	11.1	11.7
Total	192.1	177.8	197.5

Guest Night Sold, (All Arrivals), 2009 - 2011



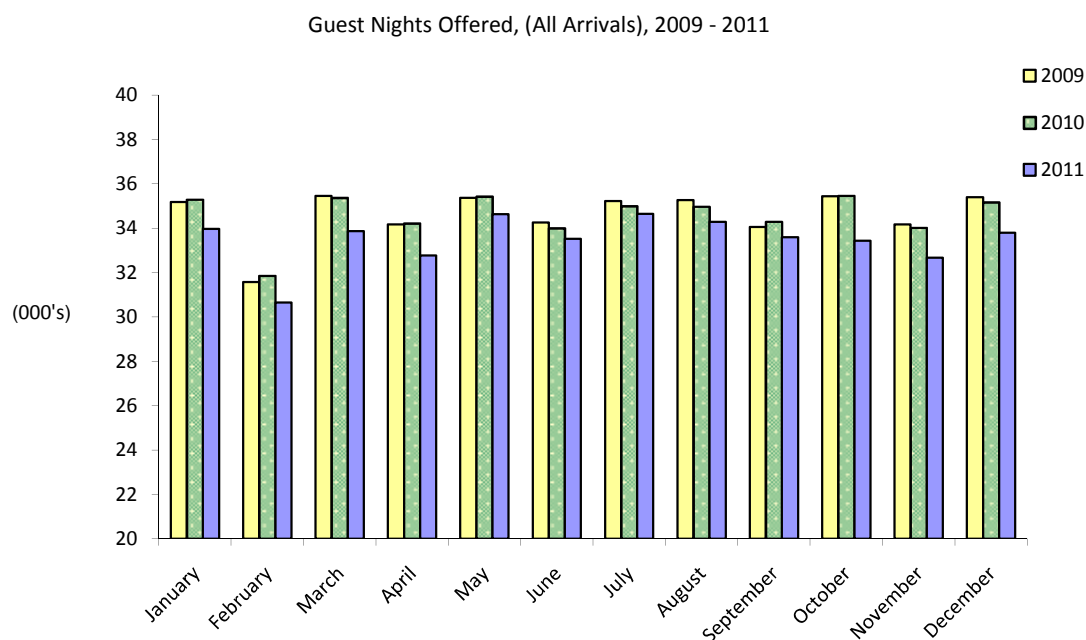
Notes:

(i) Yearly totals have been rounded off and need not necessarily equal the sum of the rounded-off monthly figures.

5: Guest Nights

5.8 All Arrivals Guest Nights Offered, 2009 - 2011

	Guest nights offered (000's)		
	2009	2010	2011
January	35.2	35.3	34.0
February	31.6	31.9	30.6
March	35.5	35.4	33.9
April	34.2	34.2	32.8
May	35.4	35.4	34.6
June	34.3	34.0	33.5
July	35.2	35.0	34.7
August	35.3	35.0	34.3
September	34.0	34.3	33.6
October	35.4	35.5	33.4
November	34.2	34.0	32.7
December	35.4	35.2	33.8
Total	415.6	415.0	401.8



Notes:

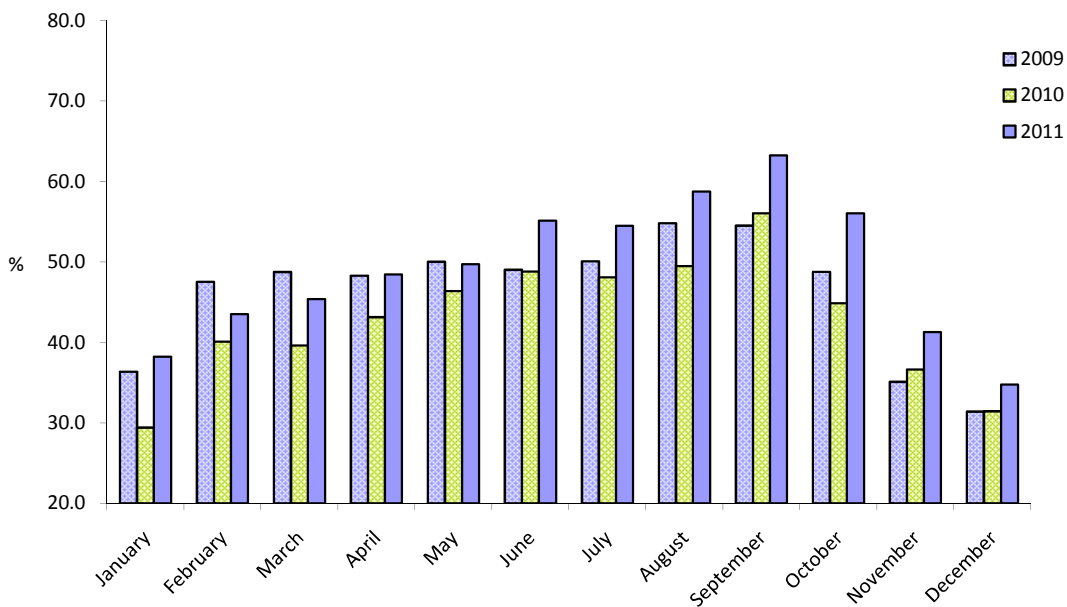
(i) Yearly totals have been rounded off and need not necessarily equal the sum of the rounded-off monthly figures.

5: Sleeper Occupancy Rates

5.9 Sleeper Occupancy Rates (All Arrivals), 2009 - 2011

Sleeper occupancy rates (%)			
	2009	2010	2011
January	36.4	29.4	38.2
February	47.5	40.1	43.5
March	48.8	39.6	45.4
April	48.3	43.1	48.5
May	50.0	46.4	49.7
June	49.1	48.8	55.1
July	50.1	48.1	54.5
August	54.8	49.5	58.8
September	54.5	56.1	63.2
October	48.8	44.9	56.1
November	35.1	36.7	41.3
December	31.4	31.5	34.8
Total	46.2	42.8	49.2

% Sleeper Occupancy Rates, (All Arrivals), 2009 - 2011



Notes:

(i) Yearly totals have been rounded off and need not necessarily equal the sum of the rounded-off monthly figures.

6: Guest Nights Sold/Offered, Sleeper Occupancy Rates

6.1 Guest Nights Sold/Offered, Sleeper Occupancy Rates(Tourist Arrivals), 1985 - 1988

	Guest nights sold (000's)				Guest nights offered (000's)				Sleeper occupancy rates (%)			
	1985	1986	1987	1988	1985	1986	1987	1988	1985	1986	1987	1988
January	8	10	15	13	45	43	46	46	16.5	22.1	33.6	27.5
February	14	12	15	14	41	38	42	44	33.8	31.0	34.8	32.2
March	19	16	21	19	46	43	46	48	42.2	38.1	46.3	39.8
April	18	13	19	20	45	42	43	45	40.2	30.7	44.9	44.8
May	18	19	18	19	47	45	45	47	39.4	41.9	38.6	40.3
June	24	23	16	20	45	43	44	47	52.9	52.8	36.9	43.5
July	23	18	15	19	48	44	45	48	47.5	41.0	34.3	39.2
August	27	21	19	17	48	46	45	48	57.0	46.3	42.5	34.5
September	26	21	22	17	46	44	45	44	56.7	48.1	49.7	37.8
October	19	20	21	17	48	45	44	46	40.2	45.3	46.4	37.9
November	13	18	18	14	46	43	44	43	28.4	41.7	41.8	32.5
December	9	12	14	11	47	44	46	45	18.8	27.5	29.8	24.3
Total	218	203	213	200	552	520	535	551	39.6	38.6	40.0	36.2

6.2 Guest Nights Sold/Offered, Sleeper Occupancy rates (Tourist Arrivals), 1989 - 1992

	Guest nights sold (000's)				Guest nights offered (000's)				Sleeper occupancy rates (%)			
	1989	1990	1991	1992	1989	1990	1991	1992	1989	1990	1991	1992
January	10	8	7	5	42	37	40	42	23.7	22.7	17.7	12.9
February	13	10	8	6	40	37	37	41	33.4	27.1	20.2	15.4
March	15	13	8	9	42	42	44	46	36.2	31.0	19.1	19.3
April	16	14	9	9	42	41	41	42	37.0	34.0	21.9	21.7
May	12	12	10	9	44	42	41	43	27.9	29.4	23.3	20.7
June	14	10	8	10	43	39	44	47	32.7	24.3	19.4	22.0
July	13	12	10	10	43	42	43	45	30.6	27.4	23.2	21.3
August	13	10	8	10	43	41	40	44	30.6	23.1	21.3	22.0
September	12	12	8	9	42	41	44	41	29.8	30.0	18.2	22.7
October	14	11	10	9	40	40	43	42	34.0	27.8	23.3	20.8
November	11	8	7	6	38	40	41	32	27.6	19.5	16.4	20.1
December	9	8	6	6	42	39	45	33	21.7	20.9	12.9	17.5
Total	152	128	99	98	501	481	502	497	30.4	26.5	19.7	19.8

Note:

(i) Yearly totals have been rounded off and need not necessarily equal the sum of the rounded-off monthly figures.

6: Guest Nights Sold/Offered, Sleeper Occupancy Rates

6.3 Guest Nights Sold/Offered, Sleeper Occupancy Rates (Tourist Arrivals), 1993 - 1996

	Guest nights sold (000's)				Guest nights offered (000's)				Sleeper occupancy rates (%)			
	1993	1994	1995	1996	1993	1994	1995	1996	1993	1994	1995	1996
January	4	7	5	5	33	34	32	32	12.4	19.5	15.1	16.4
February	5	6	7	7	30	30	28	30	17.7	21.1	25.8	22.8
March	8	8	8	9	33	33	31	32	23.0	24.5	26.4	26.7
April	8	9	10	10	32	31	25	31	25.2	27.1	38.1	30.9
May	10	10	9	10	34	35	31	32	28.5	28.5	30.8	30.9
June	10	9	11	9	32	33	30	30	32.7	28.3	37.2	30.5
July	8	10	11	9	32	35	32	31	26.2	28.7	36.2	29.3
August	10	8	11	10	33	35	32	31	30.5	25.6	34.8	32.0
September	12	12	14	10	32	33	31	31	36.8	35.2	45.6	34.3
October	11	11	11	10	34	35	32	31	33.2	30.4	34.1	30.9
November	9	7	7	7	32	33	31	30	27.8	20.6	23.8	21.5
December	7	6	7	6	33	34	32	31	21.8	18.9	21.8	20.7
Total	103	103	113	101	391	401	369	372	26.4	25.8	30.7	27.2

6.4 Guest Nights Sold/Offered, Sleeper Occupancy Rates (Tourist Arrivals), 1997 - 2000

	Guest nights sold (000's)				Guest nights offered (000's)				Sleeper occupancy rates (%)			
	1997	1998	1999	2000	1997	1998	1999	2000	1997	1998	1999	2000
January	5	4	5	4	31	30	29	31	15.2	14.4	17.2	13.0
February	6	5	6	6	29	25	26	29	22.3	21.4	21.8	20.0
March	7	7	8	8	31	28	29	31	21.3	25.8	27.7	25.9
April	7	7	8	9	31	26	29	30	23.9	28.8	27.3	30.8
May	10	8	9	12	32	27	29	31	29.9	30.6	30.0	39.1
June	9	9	9	11	30	28	29	30	28.9	30.5	31.4	36.6
July	9	8	8	10	31	29	29	31	28.6	28.4	27.6	33.4
August	11	10	10	12	31	29	29	31	34.5	36.5	35.2	37.6
September	11	12	10	14	31	28	29	31	34.8	41.5	36.2	44.3
October	9	10	11	10	31	29	31	31	28.3	34.6	34.3	31.6
November	6	8	9	8	31	28	30	30	20.9	27.1	28.8	26.7
December	6	6	5	7	31	29	31	31	18.9	19.5	17.3	21.6
Total	95	94	98	111	370	336	351	368	25.6	28.2	27.9	30.1

Note:

(i) Yearly totals have been rounded off and need not necessarily equal the sum of the rounded-off monthly figures.

6: Guest Nights Sold/Offered, Sleeper Occupancy Rates

6.5 Guest Nights Sold/Offered, Sleeper Occupancy Rates (Tourist Arrivals), 2001 - 2004

	Guest nights sold (000's)				Guest nights offered (000's)				Sleeper occupancy rates (%)			
	2001	2002	2003	2004	2001	2002	2003	2004	2001	2002	2003	2004
January	6	6	6	7	31	31	31	29	19.3	20.4	20.6	22.9
February	8	8	8	8	28	28	28	29	26.9	28.8	29.2	27.9
March	9	11	11	11	31	31	31	31	30.7	34.5	34.0	37.0
April	9	10	10	10	30	30	30	30	29.1	33.0	31.5	33.9
May	11	11	11	12	31	31	31	31	34.9	36.5	34.5	39.6
June	12	10	12	11	30	30	30	30	39.5	33.0	38.5	37.4
July	11	12	11	15	31	31	31	31	37.0	38.7	34.8	47.4
August	12	13	13	16	31	31	31	31	40.0	40.7	40.4	50.7
September	14	15	14	17	30	30	30	31	46.3	48.7	46.5	55.2
October	13	13	12	15	31	31	31	31	40.6	40.9	40.0	48.2
November	9	9	10	13	30	30	30	30	29.6	29.8	33.2	41.5
December	7	7	6	10	31	31	31	31	22.1	22.9	20.9	30.4
Total	121	125	123	145	366	367	367	366	33.0	34.0	33.7	39.5

6.6 Guest Nights Sold/Offered, Sleeper Occupancy (Tourist Arrivals), 2005 - 2008

	Guest nights sold (000's)				Guest nights offered (000's)				Sleeper occupancy rates (%)			
	2005	2006	2007	2008	2005	2006	2007	2008	2005	2006	2007	2008
January	9	8	7	7	31	34	38	36	29.1	22.4	18.3	18.9
February	12	8	7	7	27	31	35	34	43.6	26.4	21.1	19.8
March	12	11	9	8	29	34	38	37	42.6	31.2	23.1	21.1
April	13	11	10	10	28	33	37	35	47.1	32.4	27.5	29.0
May	15	12	10	11	30	34	36	37	48.8	33.9	27.9	30.5
June	15	13	11	11	28	33	35	35	52.2	37.8	30.8	30.8
July	13	12	10	11	29	35	36	36	43.7	34.9	26.8	29.5
August	13	13	11	13	29	35	36	36	46.1	35.8	29.7	35.0
September	15	14	13	12	28	34	35	35	54.7	41.4	35.7	34.5
October	16	13	14	12	29	35	37	36	53.4	38.0	36.9	32.7
November	10	9	9	8	29	34	36	34	36.0	27.2	23.7	23.9
December	7	7	6	6	32	35	37	35	21.1	19.7	16.7	18.3
Total	150	129	115	115	349	406	434	425	42.9	31.7	26.5	27.0

Note:

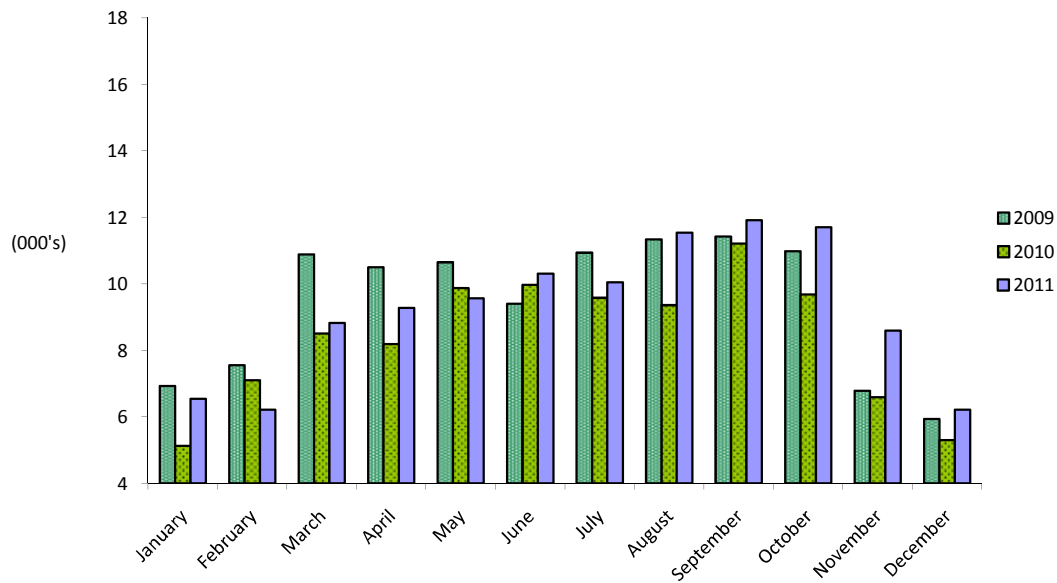
(i) Yearly totals have been rounded off and need not necessarily equal the sum of the rounded-off monthly figures.

6: Guest Nights Sold

6.7 Guest Nights Sold (Tourist Arrivals), 2009 - 2011

	Guest nights sold (000's)		
	2009	2010	2011
January	6.9	5.1	6.5
February	7.6	7.1	6.2
March	10.9	8.5	8.8
April	10.5	8.2	9.3
May	10.7	9.9	9.6
June	9.4	10.0	10.3
July	10.9	9.6	10.0
August	11.3	9.4	11.5
September	11.4	11.2	11.9
October	11.0	9.7	11.7
November	6.8	6.6	8.6
December	5.9	5.3	6.6
Total	113.3	100.5	111.1

Guest Night Sold, (Tourist Arrivals), 2009 - 2011



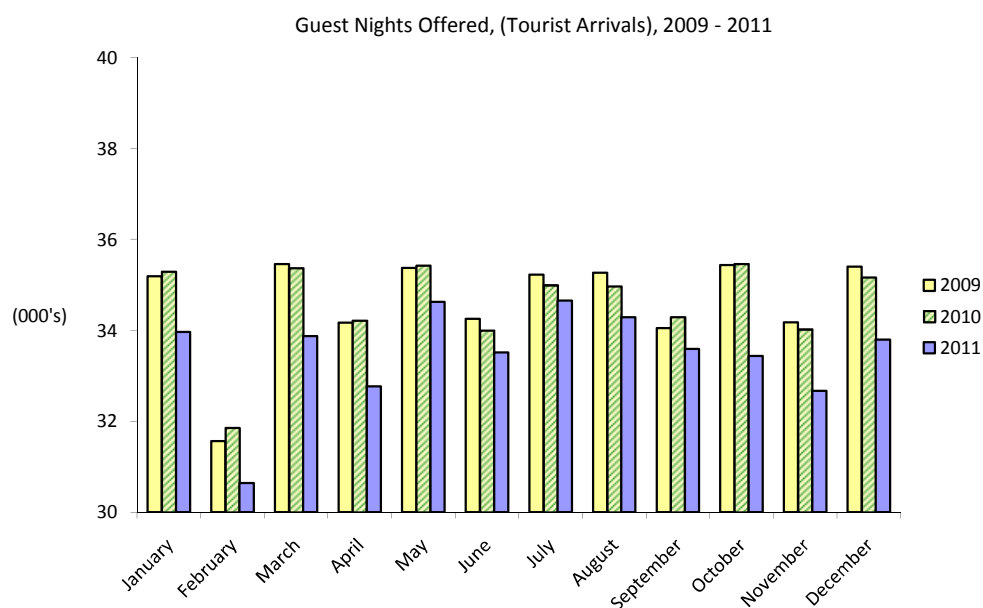
Note:

(i) Yearly totals have been rounded off and need not necessarily equal the sum of the rounded-off monthly figures.

6: Guest Nights Sold Offered

6.8 Guest Nights Offered (Tourist Arrivals), 2009 - 2011

	Guest nights offered (000's)		
	2009	2010	2011
January	35.2	35.3	34.0
February	31.6	31.9	30.6
March	35.5	35.4	33.9
April	34.2	34.2	32.8
May	35.4	35.4	34.6
June	34.3	34.0	33.5
July	35.2	35.0	34.7
August	35.3	35.0	34.3
September	34.0	34.3	33.6
October	35.4	35.5	33.4
November	34.2	34.0	32.7
December	35.4	35.2	33.8
Total	415.6	415.0	401.8



Note:

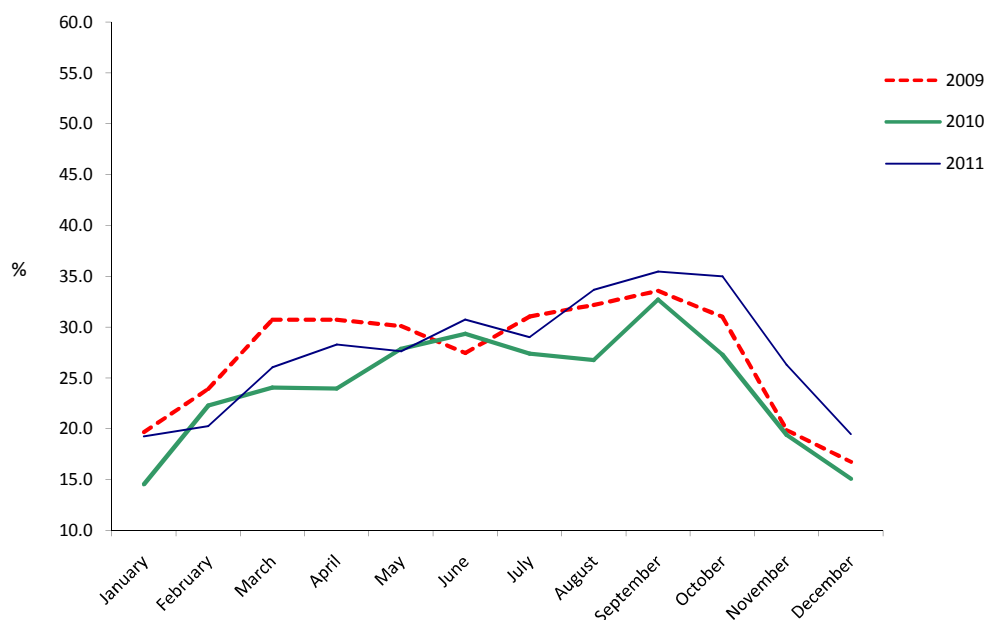
(i) Yearly totals have been rounded off and need not necessarily equal the sum of the rounded-off monthly figures.

6: Sleeper Occupancy Rates

6.9 Sleeper Occupancy Rates (Tourist Arrivals), 2009 - 2011

	Sleeper occupancy rates (%)		
	2009	2010	2011
January	19.7	14.5	19.2
February	23.9	22.3	20.3
March	30.7	24.1	26.1
April	30.7	23.9	28.3
May	30.1	27.9	27.6
June	27.5	29.3	30.8
July	31.1	27.4	29.0
August	32.2	26.8	33.7
September	33.6	32.7	35.5
October	31.0	27.3	35.0
November	19.9	19.4	26.3
December	16.8	15.1	19.5
Total	27.3	24.2	27.6

Sleeper Occupancy Rates (Tourist Arrivals), 2009 - 2011



Note:

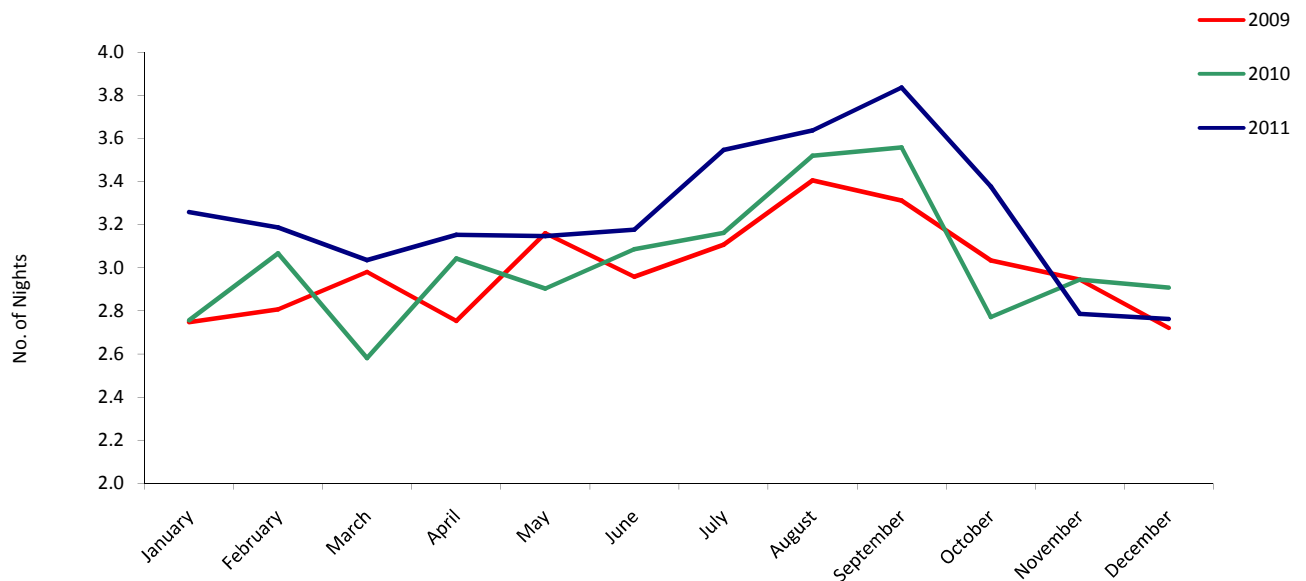
(i) Yearly totals have been rounded off and need not necessarily equal the sum of the rounded-off monthly figures.

7: Average Length of Stay (Nights)

7.1 Average Length of Stay Per Person (All Arrivals), 2000 - 2011

Average length of stay (nights)													
Year	Jan	Feb	Mar	Apr	May	Jun	Jul	Aug	Sep	Oct	Nov	Dec	Total
2000	2.9	3.2	3.0	3.2	3.9	3.5	3.9	3.5	3.4	3.1	3.0	3.2	3.4
2001	2.7	3.4	3.3	3.4	3.4	3.5	3.3	3.4	3.6	3.5	3.5	3.1	3.3
2002	3.0	2.9	3.2	3.1	3.1	3.0	3.1	3.1	3.2	3.1	3.0	2.8	3.1
2003	2.8	2.9	3.0	3.1	3.0	3.1	3.1	3.1	3.4	3.2	2.8	2.7	3.0
2004	2.9	2.9	3.2	3.2	3.1	3.2	3.6	3.7	3.5	3.4	3.1	3.2	3.3
2005	3.0	3.4	3.1	3.3	3.2	3.6	3.3	3.3	3.5	3.8	3.5	2.9	3.3
2006	2.8	2.9	3.1	3.1	3.0	3.4	3.8	3.8	3.6	3.4	3.1	3.0	3.2
2007	3.1	3.5	3.3	3.4	2.8	3.1	3.2	3.3	3.4	3.1	2.8	2.6	3.1
2008	2.8	2.7	2.6	2.9	2.8	3.3	3.0	3.2	3.3	3.2	2.9	2.7	3.0
2009	2.7	2.8	3.0	2.8	3.2	3.0	3.1	3.4	3.3	3.0	2.5	2.7	3.0
2010	2.8	3.1	2.6	3.0	2.9	3.1	3.2	3.5	3.6	2.8	2.9	2.9	3.0
2011	3.3	3.2	3.0	3.2	3.1	3.2	3.5	3.6	3.8	3.4	2.8	2.8	3.3

Average Length of Stay (All Arrivals), 2009 - 2011



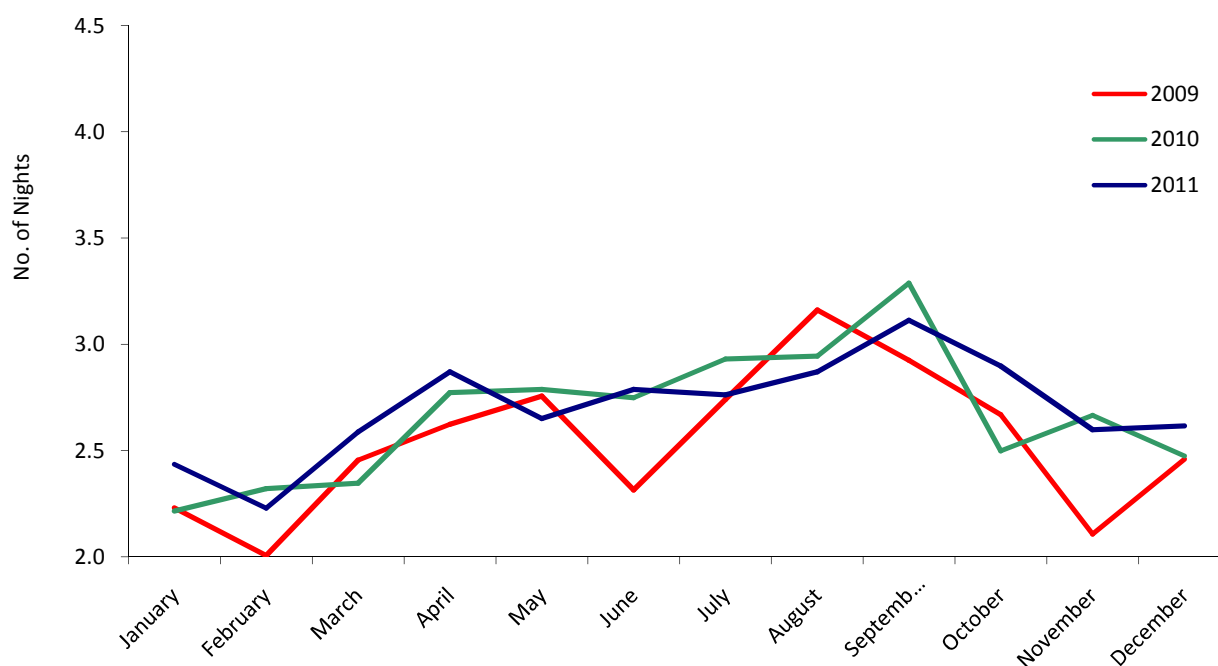
7: Average Length of Stay (Nights)

7.2 Average Length of Stay Per Person (Tourist Arrivals), 2000-2011

Average length of stay (nights)

Year	Jan	Feb	Mar	Apr	May	Jun	Jul	Aug	Sep	Oct	Nov	Dec	Total
2000	2.6	3.0	2.9	3.1	3.5	3.1	3.5	3.3	3.3	2.7	2.8	2.7	3.1
2001	2.6	3.2	3.0	2.9	3.1	3.5	3.1	3.0	3.4	3.3	2.6	2.6	3.1
2002	2.8	2.7	3.0	3.1	3.0	3.4	3.0	3.1	3.2	3.2	2.7	2.7	3.0
2003	2.8	2.9	3.0	2.9	3.0	3.2	3.1	3.1	3.5	3.2	2.8	2.4	3.0
2004	2.5	2.6	3.0	3.0	2.8	3.0	3.8	3.8	3.7	3.7	3.3	3.4	3.2
2005	3.2	3.6	3.4	3.7	3.4	3.8	3.6	3.3	3.8	4.0	3.8	3.0	3.6
2006	3.0	3.1	2.9	3.0	2.8	3.2	3.8	3.9	3.7	3.4	3.0	3.0	3.2
2007	2.9	3.2	2.9	3.2	3.0	2.9	2.7	2.8	3.1	2.9	2.4	2.6	2.9
2008	2.1	2.2	2.2	2.5	2.7	2.9	2.5	3.2	3.0	2.8	2.4	2.6	2.6
2009	2.2	2.0	2.5	2.6	2.8	2.3	2.7	3.2	2.9	2.7	2.1	2.5	2.5
2010	2.2	2.3	2.3	2.8	2.8	2.7	2.9	2.9	3.3	2.5	2.7	2.5	2.7
2011	2.4	2.2	2.6	2.9	2.7	2.8	2.8	2.9	3.1	2.9	2.6	2.6	2.7

Average Length of Stay (Tourist Arrivals), 2009 - 2011



8: Summary

8.1 Summary of Hotel Statistics, 1985 - 2011

	Arrivals at hotels	Guest nights sold	% Sleeper occupancy	Av. Length of stay (nights)
1985	55,119	281,525	51.0	5.1
1986	56,525	266,223	51.3	4.6
1987	64,349	279,377	52.3	4.3
1988	64,942	286,295	52.0	4.4
1989	67,934	220,083	44.0	3.2
1990	64,793	196,516	40.8	3.0
1991	43,193	178,053	35.5	4.1
1992	40,986	156,947	31.6	3.8
1993	39,123	157,215	40.2	4.0
1994	37,851	149,292	37.2	3.9
1995	45,056	144,453	39.2	3.2
1996	46,142	140,596	37.8	3.1
1997	48,420	143,972	39.0	3.0
1998	41,616	144,538	43.1	3.5
1999	42,031	153,583	43.7	3.7
2000	48,949	164,232	44.6	3.4
2001	53,776	178,951	48.9	3.3
2002	59,417	182,444	49.7	3.1
2003	61,743	187,631	51.2	3.0
2004	61,710	201,706	55.1	3.3
2005	58,796	195,827	56.2	3.3
2006	59,194	192,331	47.3	3.2
2007	63,691	199,529	45.9	3.1
2008	69,630	207,085	48.7	3.0
2009	64,691	192,060	46.2	3.0
2010	58,692	177,799	42.8	3.0
2011	60,615	197,524	49.2	3.3

All Arrivals at Hotels, 1985 - 2011

