



GOVERNMENT OF GIBRALTAR

HOTEL OCCUPANCY

SURVEY

2006

STATISTICS OFFICE



GOVERNMENT OF GIBRALTAR

HOTEL OCCUPANCY SURVEY 2006

STATISTICS OFFICE

Government of Gibraltar
Statistics Office

Statistics Online

Copies of the Hotel Occupancy Survey can be obtained, free of charge from the Statistics Office and are also available electronically on the Gibraltar Government Website www.gibraltar.gov.gi.

Historic data can be downloaded from previous copies of the report available on-line.

Comments and requests for general information should be addressed to:

Statistics Office
99 New Harbours
The New Harbours
Gibraltar
Or
E-mail: statistics@gibraltar.gov.gi
Tel: +350 75515/ +350 75490
Fax: +350 51160

PREFACE

The Statistics (Hotel Occupancy Survey) Order 1971 requires that the Government Statistician prepares a report and summary of the findings of the Hotel Occupancy Survey to be laid before Parliament.

This is the thirty-first such report and it contains a summary of the statistics collected for the years 1980 – 2006.

I must express my thanks to the hotels and to other establishments for their continued co-operation in the conduct of this survey.

GOVERNMENT STATISTICIAN

JUNE 2007

- C O N T E N T S -

	<u>PAGE</u>
A. Definitions and Notes	
Table 1 General Analysis, All Hotels, 1980 - 2006	1
Chart All Arrivals at Hotels, 1980 - 2006	2
Chart % Room Occupancy, All Arrivals, 1988 - 2006	3
Chart Average Length of Stay, All Arrivals, 1980 - 2006	4
Table 2(a) Room Nights Sold and Offered, All Hotels, 2000 - 2004 (All Arrivals)	5
Table 2(b) Room Nights Sold and Offered, All Hotels, 2005 - 2006 (All Arrivals)	6
Chart Room Nights Sold, All Arrivals, 2004 - 2006	7
Table 2(c) Room Nights Sold and Offered, All Hotels, 2000 - 2004 (Tourist Arrivals)	8
Table 2(d) Room Nights Sold and Offered, All Hotels, 2005 - 2006 (Tourist Arrivals)	9
Chart Room Nights Sold, Tourist Arrivals, 2004 - 2006	10
Table 3(a) % Room Occupancy Rates, 1996 - 2000	11
Table 3(b) % Room Occupancy Rates, 2001 - 2006	12
Chart % Room Occupancy Rates, All Arrivals, 2004 - 2006	13
Chart % Room Occupancy Rates, Tourist Arrivals, 2004 - 2006	14
Table 4(a) Number of Arrivals by Month, All Hotels, 1980 - 1986	15
Table 4(b) Number of Arrivals by Month, All Hotels, 1987 - 1993	16
Table 4(c) Number of Arrivals by Month, All Hotels, 1994 - 2000	17
Table 4(d) Number of Arrivals by Month, All Hotels, 2001 - 2006	18
Chart All Arrivals at Hotels, 2004 - 2006	19
Table 5(a) Guest Nights Sold/Offered, % Sleeper Occupancy, All Hotels, 1980 - 1983 (All Arrivals)	20
Table 5(b) Guest Nights Sold/Offered, % Sleeper Occupancy, All Hotels, 1984 - 1987 (All Arrivals)	21
Table 5(c) Guest Nights Sold/Offered, % Sleeper Occupancy, All Hotels, 1988 - 1991 (All Arrivals)	22
Table 5(d) Guest Nights Sold/Offered, % Sleeper Occupancy, All Hotels, 1992 - 1995 (All Arrivals)	23
Table 5(e) Guest Nights Sold/Offered, % Sleeper Occupancy, All Hotels, 1996 - 1999 (All Arrivals)	24
Table 5(f) Guest Nights Sold/Offered, % Sleeper Occupancy, All Hotels, 2000 - 2003 (All Arrivals)	25
Table 5(g) Guest Nights Sold/Offered, % Sleeper Occupancy, All Hotels, 2004 - 2006 (All Arrivals)	26
Chart Guest Nights Sold, All Arrivals, 2004 - 2006	27
Chart Guest Nights Offered, All Arrivals, 2004 - 2006	28
Chart % Sleeper Occupancy, All Arrivals, 2004 - 2006	29

	<u>PAGE</u>	
Table 6(a)	Guest Nights Sold/Offered, % Sleeper Occupancy, All Hotels, 1980 - 1983 (Tourist Arrivals)	30
Table 6(b)	Guest Nights Sold/Offered, % Sleeper Occupancy, All Hotels, 1984 - 1987 (Tourist Arrivals)	31
Table 6(c)	Guest Nights Sold/Offered, % Sleeper Occupancy, All Hotels, 1988 - 1991 (Tourist Arrivals)	32
Table 6(d)	Guest Nights Sold/Offered, % Sleeper Occupancy, All Hotels, 1992 - 1995 (Tourist Arrivals)	33
Table 6(e)	Guest Nights Sold/Offered, % Sleeper Occupancy, All Hotels, 1996 - 1999 (Tourist Arrivals)	34
Table 6(f)	Guest Nights Sold/Offered, % Sleeper Occupancy, All Hotels, 2000 - 2003 (Tourist Arrivals)	35
Table 6(g)	Guest Nights Sold/Offered, % Sleeper Occupancy, All Hotels, 2004 - 2006 (Tourist Arrivals)	36
Chart	Guest Nights Sold, Tourist Arrivals, 2004 - 2006	37
Chart	% Sleeper Occupancy, Tourist Arrivals, 2004 - 2006	38
Table 7(a)	Average Length of Stay Per Person (Nights), All Hotels, 1980 - 2006 (All Arrivals)	39
Chart	Average Length of Stay, All Arrivals, 2004 - 2006	40
Table 7(b)	Average Length of Stay Per Person (Nights), All Hotels, 1980 - 2006 (Tourist Arrivals)	41
Chart	Average Length of Stay, Tourist Arrivals, 2004 - 2006	42
Table 8	Summary of Hotel Statistics, 1973 - 2006	43

A. DEFINITIONS AND NOTES

- (a) Tourist: A tourist is a person who is primarily in Gibraltar for the purpose of a holiday. It is nevertheless up to the discretion of the individual hotels who to include under this category.
- (b) Guest Nights: Calculated on the basis of “one guest x one night”.
- (c) Room Nights: Calculated on the basis of “one room x one night”.
- (d) Sleeper Occupancy: Calculated as the percentage of guest nights sold over guest nights offered. It should be noted that this measure does not necessarily give an accurate indication of the ability of the hotel to accept more guests. e.g. one person staying in a room with two beds gives a 50% sleeper occupancy and a 100% room occupancy.
- (e) Room Occupancy: Calculated as the percentage of room nights sold over room nights offered.
- (f) Abbreviations:
 - GNS - Guest Nights Sold.
 - GNO - Guest Nights Offered.
 - RNS - Room Nights Sold.
 - RNO - Room Nights Offered.
- (g) In interpreting the figures it should be noted that:
 - (i) The Continental Hotel is included as from January 1986.
 - (ii) The Sunrise Motel is included for the period January 1992 to December 1994.
 - (iii) As from September 1992, the Montarik Hotel is not included.
 - (iv) As from November 1992, the Gibraltar Beach Hotel is not included.
 - (v) The Cannon Hotel is included with effect from July 1995.
 - (vi) The Emile Youth Hostel, Governor’s Inn Apartments and Herald Travel Apartments are included with effect from January 2006.
- (i) The survey is based on the figures provided by all the hotels, together with those of the establishments specified in (g)(vi) above.

Table 1: General Analysis, All Hotels, 1980 - 2006

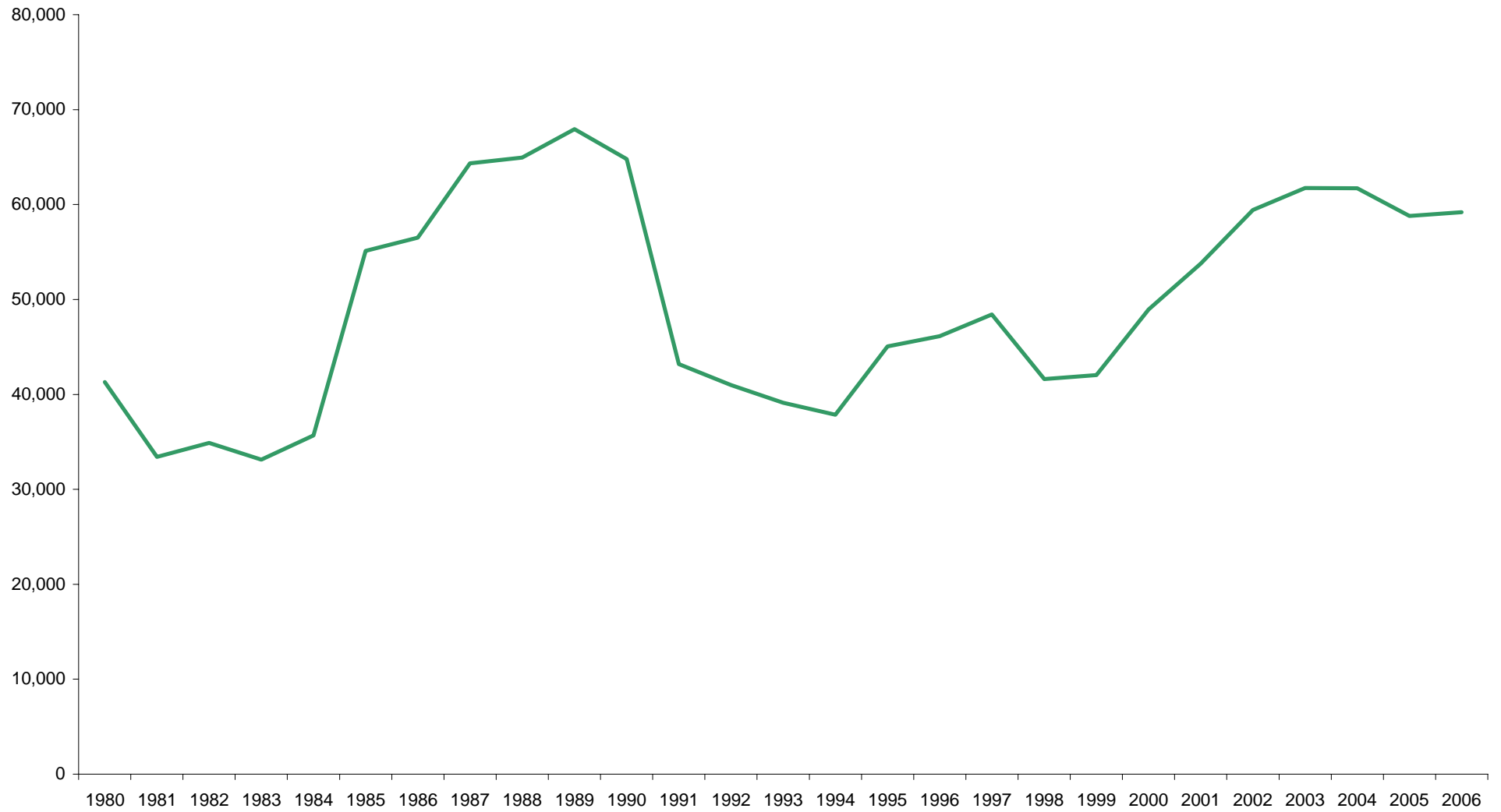
ALL VISITORS

<u>YEAR</u>	<u>TOTAL ARRIVALS</u>	<u>(000's)</u>		<u>% ROOM OCCUPANCY</u>	<u>(000's)</u>		<u>% SLEEPER OCCUPANCY</u>	<u>AVERAGE LENGTH OF STAY</u>
		<u>RNO</u>	<u>RNS</u>		<u>GNO</u>	<u>GNS</u>		
1980	41,308	n/a	n/a	n/a	551	256	46.5	6.2
1981	33,417	n/a	n/a	n/a	519	188	36.2	5.6
1982	34,896	n/a	n/a	n/a	529	223	42.2	6.4
1983	33,142	n/a	n/a	n/a	546	210	38.4	6.3
1984	35,690	n/a	n/a	n/a	546	226	41.3	6.3
1985	55,119	n/a	n/a	n/a	552	282	51.0	5.1
1986	56,525	n/a	n/a	n/a	519	266	51.3	4.6
1987	64,349	n/a	n/a	n/a	535	279	52.3	4.3
1988	64,942	n/a	n/a	61.3	551	286	52.0	4.4
1989	67,934	n/a	n/a	53.3	501	220	44.0	3.2
1990	64,793	n/a	n/a	51.3	481	197	40.8	3.0
1991	43,193	n/a	n/a	50.6	502	178	35.5	4.1
1992	40,986	237	98	41.2	497	157	31.6	3.8
1993	39,123	195	94	48.4	391	157	40.2	4.0
1994	37,851	199	89	44.5	401	149	37.2	3.9
1995	45,056	192	88	46.1	369	144	39.2	3.2
1996	46,142	191	83	43.3	372	141	37.8	3.1
1997	48,420	190	90	47.3	370	144	39.0	3.0
1998	41,616	173	93	53.6	335	145	43.1	3.5
1999	42,031	179	99	55.3	351	154	43.7	3.7
2000	48,949	179	105	58.9	368	164	44.6	3.4
2001	53,776	179	115	64.2	366	179	48.9	3.3
2002	59,417	183	118	64.4	367	182	49.7	3.1
2003	61,743	186	119	64.2	367	188	51.2	3.0
2004	61,710	186	126	68.2	366	202	55.1	3.3
2005	58,796	177	122	68.6	349	196	56.2	3.3
2006	59,194	200	119	59.2	406	192	47.3	3.2

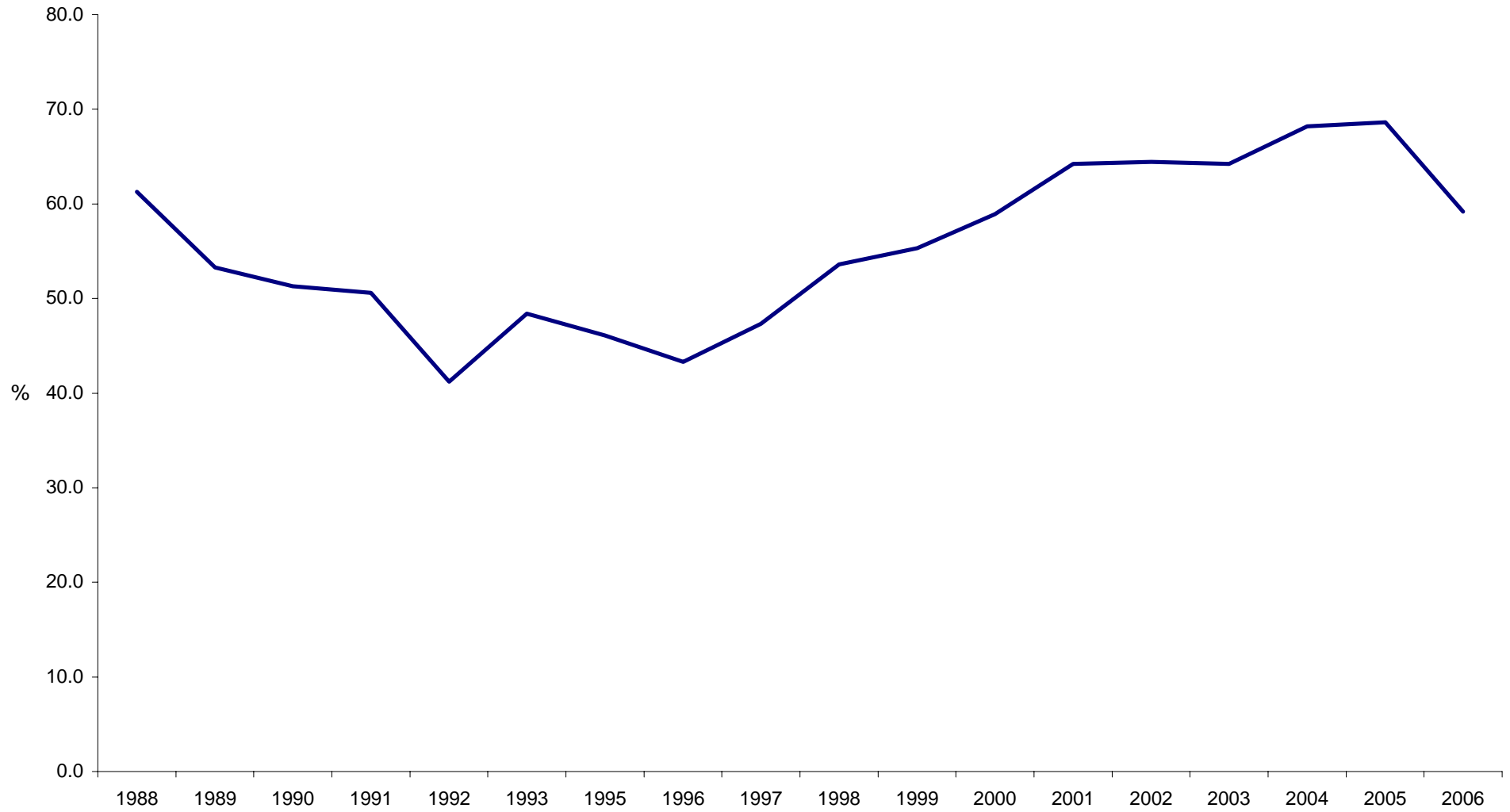
Notes:

1. RNO - Room Nights Offered.
2. RNS - Room Nights Sold.
3. GNO - Guest Nights Offered.
4. GNS - Guest Nights Sold.
5. With effect from January 1992, hotels were required under the legislation to submit returns which included the % room occupancy figures. For the period 1988 to 1991, these figures were provided voluntarily by the hotels.

ALL ARRIVALS AT HOTELS, 1980 - 2006



% ROOM OCCUPANCY, ALL ARRIVALS, 1988 - 2006



AVERAGE LENGTH OF STAY, ALL ARRIVALS, 1980 - 2006

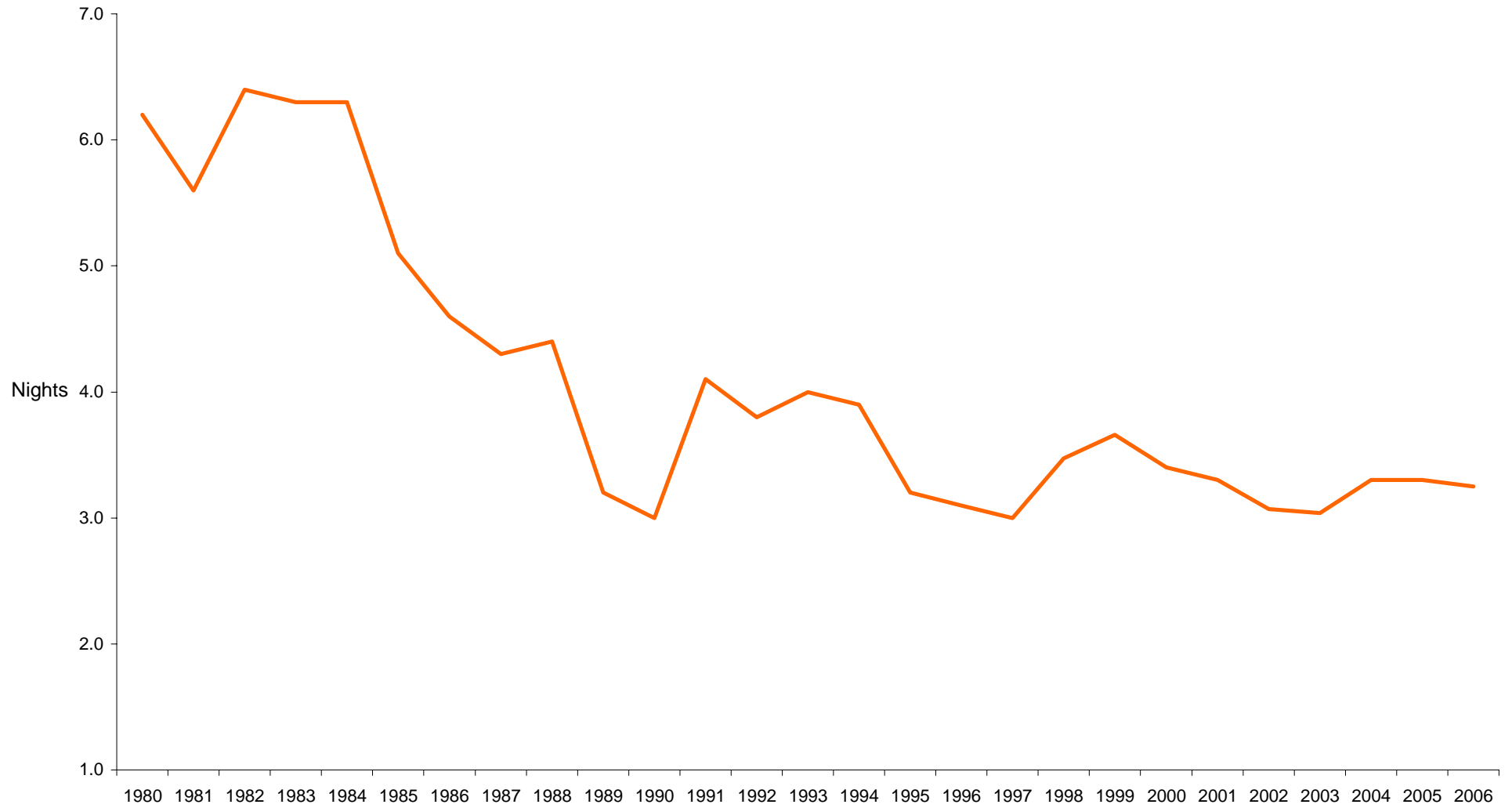


Table 2(a): Room Nights Sold and Offered, All Hotels, 2000 - 2004

ALL ARRIVALS

(00's)

(00's)

ROOM NIGHTS SOLD

ROOM NIGHTS OFFERED

<u>MONTH</u>	<u>2000</u>	<u>2001</u>	<u>2002</u>	<u>2003</u>	<u>2004</u>	<u>2000</u>	<u>2001</u>	<u>2002</u>	<u>2003</u>	<u>2004</u>
JANUARY	46	67	64	74	72	150	151	152	158	147
FEBRUARY	59	76	78	84	85	141	137	138	142	146
MARCH	78	102	95	105	113	151	151	152	158	158
APRIL	86	97	91	102	94	147	147	148	153	153
MAY	125	108	102	108	110	152	151	151	158	158
JUNE	106	111	106	117	116	148	147	148	153	153
JULY	96	101	112	104	116	151	151	157	158	159
AUGUST	94	100	106	100	119	151	151	158	157	159
SEPTEMBER	119	120	128	121	134	148	148	153	152	153
OCTOBER	98	112	115	112	117	151	152	158	157	158
NOVEMBER	78	87	102	97	106	147	148	153	152	153
DECEMBER	68	68	76	68	83	151	152	158	157	158
TOTAL	1,054	1,149	1,176	1,192	1,264	1,790	1,789	1,825	1,855	1,855

Note: Yearly totals have been rounded off and need not necessarily equal the sum of the rounded-off monthly figures.

Table 2(b): Room Nights Sold and Offered, All Hotels, 2005 - 2006

ALL ARRIVALS

<u>MONTH</u>	<u>(00's)</u>		<u>(00's)</u>	
	<u>ROOM NIGHTS SOLD</u>		<u>ROOM NIGHTS OFFERED</u>	
	<u>2005</u>	<u>2006</u>	<u>2005</u>	<u>2006</u>
JANUARY	84	76	156	169
FEBRUARY	107	82	135	154
MARCH	99	110	149	169
APRIL	107	100	146	165
MAY	113	106	153	169
JUNE	107	113	143	164
JULY	101	109	148	171
AUGUST	103	97	147	171
SEPTEMBER	114	117	142	166
OCTOBER	121	114	147	171
NOVEMBER	90	89	146	165
DECEMBER	70	73	161	170
TOTAL	1,216	1,186	1,772	2,004

Note:

Yearly totals have been rounded off and need not necessarily equal the sum of the rounded-off monthly figures.

ROOM NIGHTS SOLD, ALL ARRIVALS 2004 - 2006

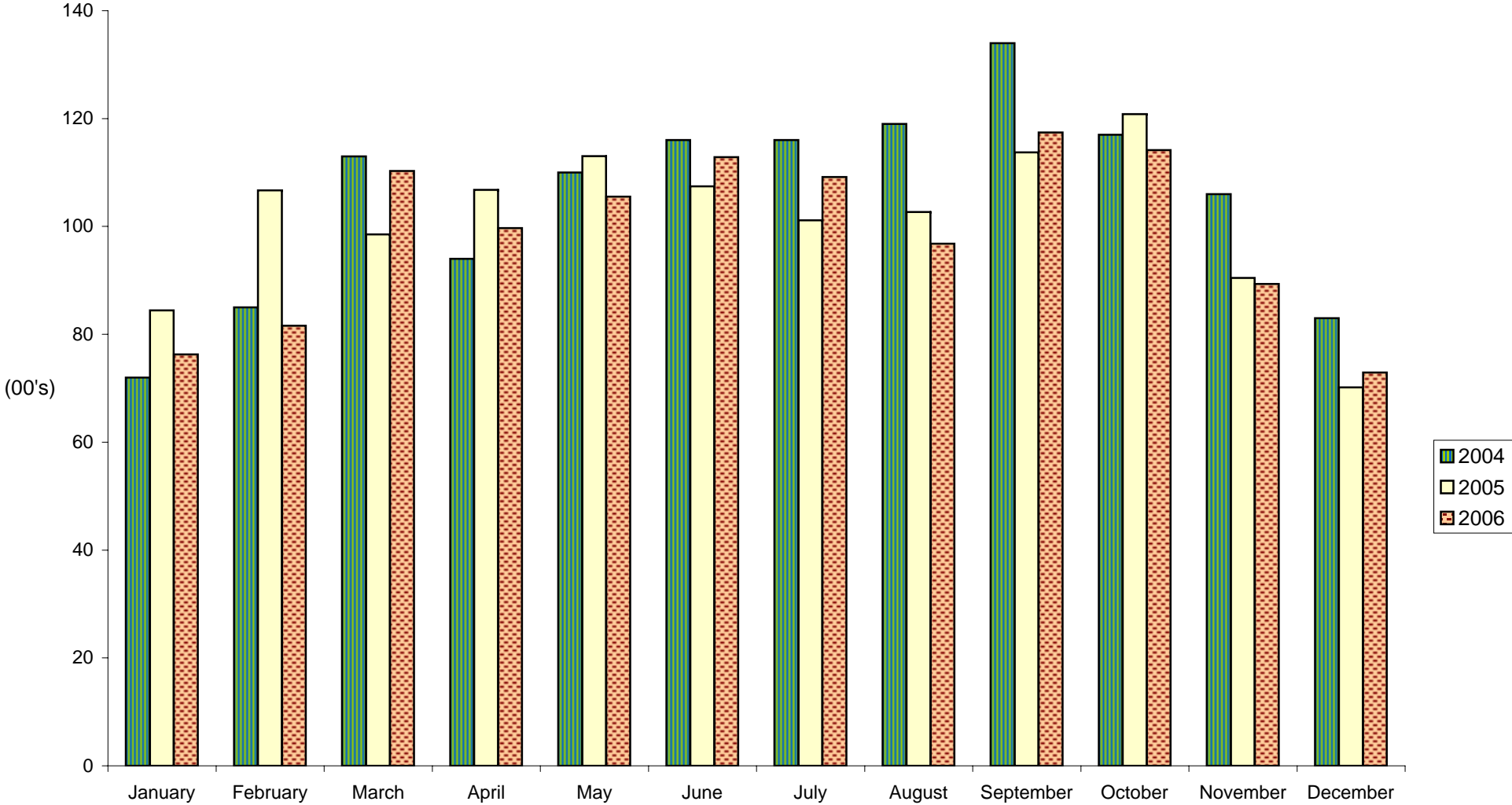


Table 2(c): Room Nights Sold and Offered, All Hotels, 2000 - 2004

<u>MONTH</u>	<u>TOURIST ARRIVALS</u>									
	<u>(00's)</u>					<u>(00's)</u>				
	<u>ROOM NIGHTS SOLD</u>					<u>ROOM NIGHTS OFFERED</u>				
	<u>2000</u>	<u>2001</u>	<u>2002</u>	<u>2003</u>	<u>2004</u>	<u>2000</u>	<u>2001</u>	<u>2002</u>	<u>2003</u>	<u>2004</u>
JANUARY	30	40	39	43	42	150	151	152	158	147
FEBRUARY	35	46	48	45	53	141	137	138	142	146
MARCH	50	60	66	65	69	151	151	152	158	158
APRIL	56	53	61	58	61	147	147	148	153	153
MAY	77	64	69	64	73	152	151	151	158	158
JUNE	66	71	60	70	70	148	147	148	153	153
JULY	60	67	74	64	74	151	151	157	158	159
AUGUST	65	68	71	67	77	151	151	158	157	159
SEPTEMBER	80	82	87	82	92	148	148	153	152	153
OCTOBER	66	74	71	74	80	151	152	158	157	158
NOVEMBER	50	55	56	61	68	147	148	153	152	153
DECEMBER	41	41	45	39	53	151	152	158	157	158
TOTAL	675	721	747	731	812	1,790	1,789	1,825	1,855	1,855

Note: Yearly totals have been rounded off and need not necessarily equal the sum of the rounded-off monthly figures.

Table 2(d): Room Nights Sold and Offered, All Hotels, 2005 - 2006

TOURIST ARRIVALS

<u>MONTH</u>	<u>(00's)</u>		<u>(00's)</u>	
	<u>ROOM NIGHTS</u>		<u>ROOM NIGHTS</u>	
	<u>SOLD</u>		<u>OFFERED</u>	
	<u>2005</u>	<u>2006</u>	<u>2005</u>	<u>2006</u>
JANUARY	51	42	156	169
FEBRUARY	67	46	135	154
MARCH	63	61	149	169
APRIL	71	61	146	165
MAY	78	70	153	169
JUNE	78	79	143	164
JULY	63	67	148	171
AUGUST	68	69	147	171
SEPTEMBER	75	83	142	166
OCTOBER	81	84	147	171
NOVEMBER	53	61	146	165
DECEMBER	40	42	161	170
TOTAL	787	765	1,772	2,004

Note:

Yearly totals have been rounded off and need not necessarily equal the sum of the rounded-off monthly figures.

ROOM NIGHTS SOLD, TOURIST ARRIVALS, 2004 - 2006

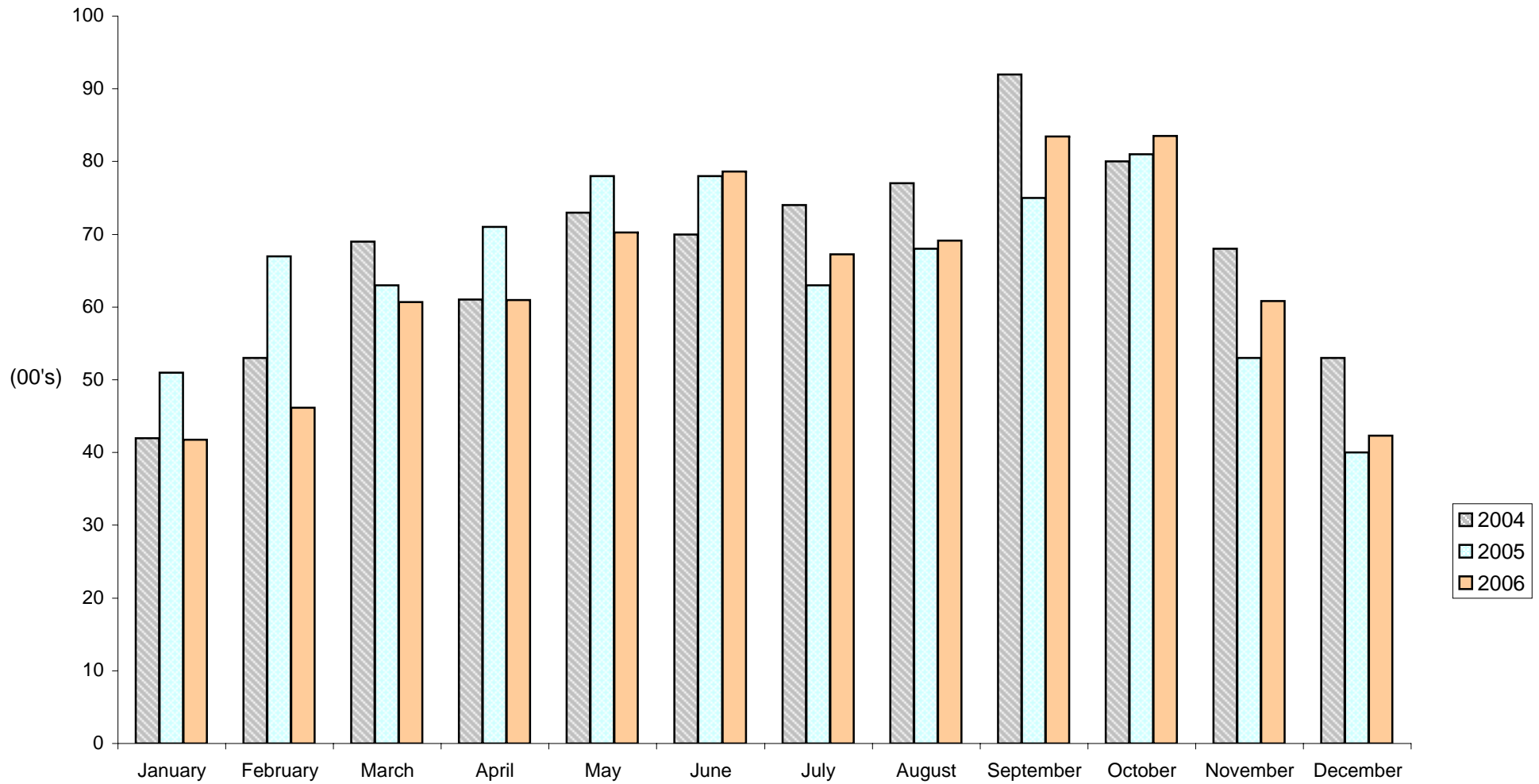


Table 3(a): % Room Occupancy Rates, 1996 - 2000

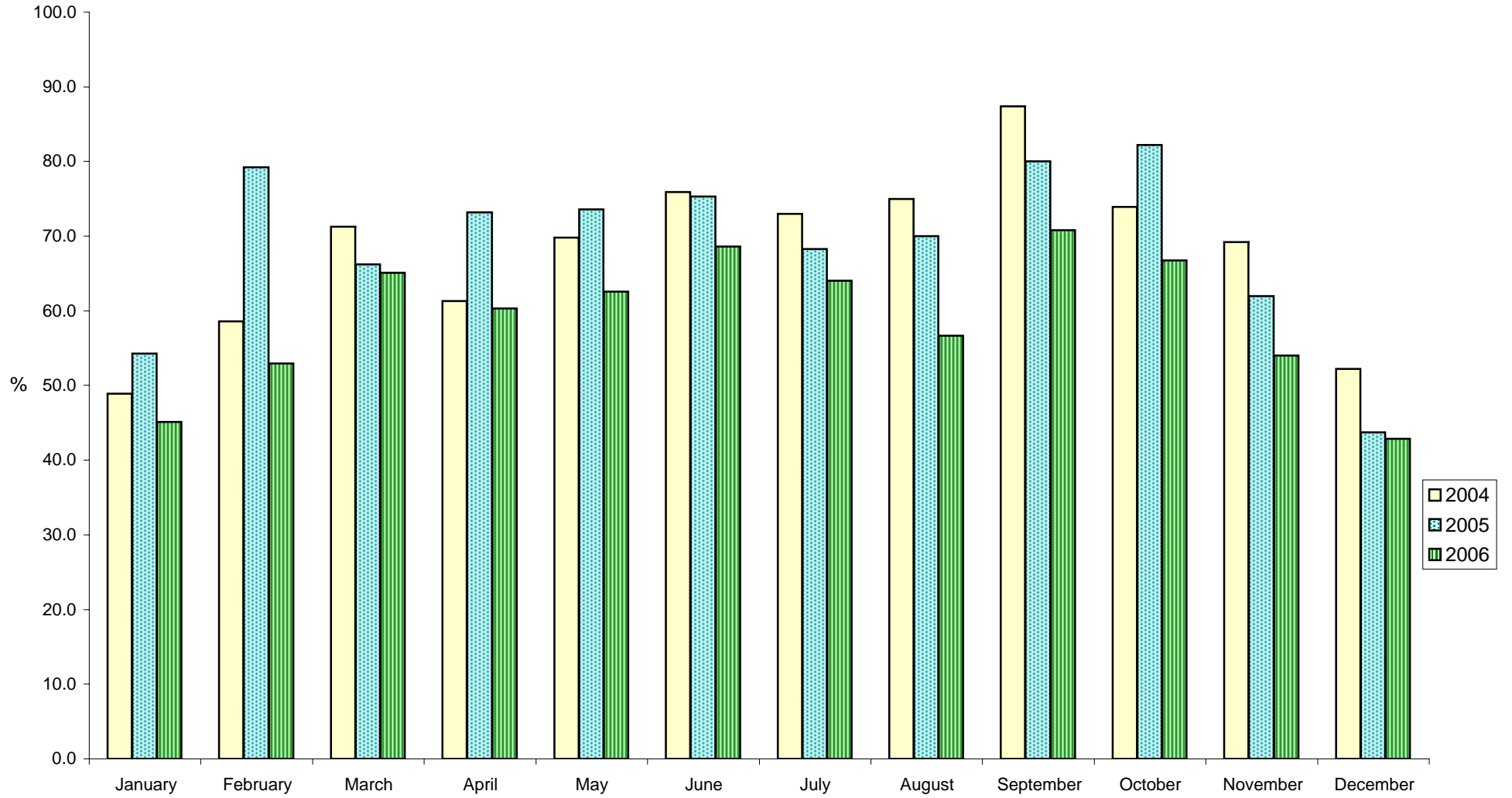
<u>MONTH</u>	<u>ALL ARRIVALS</u>					<u>TOURIST ARRIVALS</u>				
	<u>1996</u>	<u>1997</u>	<u>1998</u>	<u>1999</u>	<u>2000</u>	<u>1996</u>	<u>1997</u>	<u>1998</u>	<u>1999</u>	<u>2000</u>
JANUARY	30.4	28.6	34.8	38.7	30.6	16.3	14.8	23.1	21.9	19.6
FEBRUARY	34.2	39.9	44.7	43.9	41.6	21.8	23.4	29.4	26.9	24.8
MARCH	42.6	41.7	48.3	58.4	51.7	26.9	26.3	36.0	34.0	33.1
APRIL	44.2	43.3	51.4	56.5	58.6	30.1	25.1	33.5	32.9	38.3
MAY	49.3	51.5	61.6	54.5	82.2	31.7	31.5	40.4	34.4	50.9
JUNE	51.8	52.2	58.9	59.7	72.2	32.6	30.0	37.7	37.1	44.4
JULY	41.0	48.3	55.7	54.6	63.6	27.4	27.0	34.6	32.6	39.6
AUGUST	44.5	54.3	65.1	65.4	61.9	29.7	30.2	42.4	40.2	42.9
SEPTEMBER	59.0	62.5	69.4	69.9	80.5	34.3	35.0	47.0	43.9	54.2
OCTOBER	49.4	56.1	59.3	64.9	64.8	30.2	28.2	39.5	41.6	43.4
NOVEMBER	37.0	50.7	55.1	62.0	52.9	22.5	25.4	32.2	35.0	33.7
DECEMBER	36.2	38.9	39.7	35.1	45.0	20.4	19.7	23.1	22.4	26.8
TOTAL	43.3	47.3	53.6	55.3	58.9	27.0	26.3	34.9	33.6	37.7

Note: The yearly total for 1996 has been adjusted as a result of a program malfunction in the cumulative totals for this year.

Table 3(b): % Room Occupancy Rates, 2001 - 2006

<u>MONTH</u>	<u>ALL ARRIVALS</u>						<u>TOURIST ARRIVALS</u>					
	<u>2001</u>	<u>2002</u>	<u>2003</u>	<u>2004</u>	<u>2005</u>	<u>2006</u>	<u>2001</u>	<u>2002</u>	<u>2003</u>	<u>2004</u>	<u>2005</u>	<u>2006</u>
			<u>%</u>						<u>%</u>			
JANUARY	44.4	42.3	46.7	48.9	54.3	45.1	26.1	25.4	27.2	28.6	32.5	24.7
FEBRUARY	55.1	56.6	58.7	58.6	79.2	53.0	33.7	35.1	31.3	36.5	49.5	29.9
MARCH	67.3	62.4	66.8	71.3	66.2	65.1	39.4	43.3	40.9	43.8	42.2	35.8
APRIL	66.0	61.1	66.4	61.3	73.2	60.3	35.8	41.2	37.9	39.8	48.9	36.9
MAY	71.6	67.6	68.4	69.8	73.6	62.6	42.6	45.5	40.5	46.1	50.7	41.7
JUNE	75.3	72.0	76.6	75.9	75.3	68.6	48.2	40.8	45.5	45.5	54.6	47.8
JULY	67.0	71.4	66.3	73.0	68.3	64.0	44.5	47.1	40.9	46.9	42.5	39.4
AUGUST	66.0	67.0	63.9	75.0	70.0	56.7	44.7	44.8	42.5	48.8	46.1	40.5
SEPTEMBER	80.7	84.0	79.1	87.4	80.0	70.8	55.2	56.8	53.6	59.8	53.0	50.3
OCTOBER	73.3	72.9	71.1	73.9	82.2	66.7	48.9	44.9	47.1	50.6	55.0	48.8
NOVEMBER	58.8	66.9	64.1	69.2	62.0	54.0	37.2	36.6	40.3	44.2	36.5	36.8
DECEMBER	44.8	47.9	43.1	52.2	43.7	42.9	27.3	28.8	25.1	33.2	24.8	24.9
TOTAL	64.2	64.4	64.2	68.2	68.6	59.2	40.3	40.9	39.4	43.7	44.4	38.2

% ROOM OCCUPANCY RATES, ALL ARRIVALS, 2004 - 2006



% ROOM OCCUPANCY RATES, TOURIST ARRIVALS, 2004 - 2006

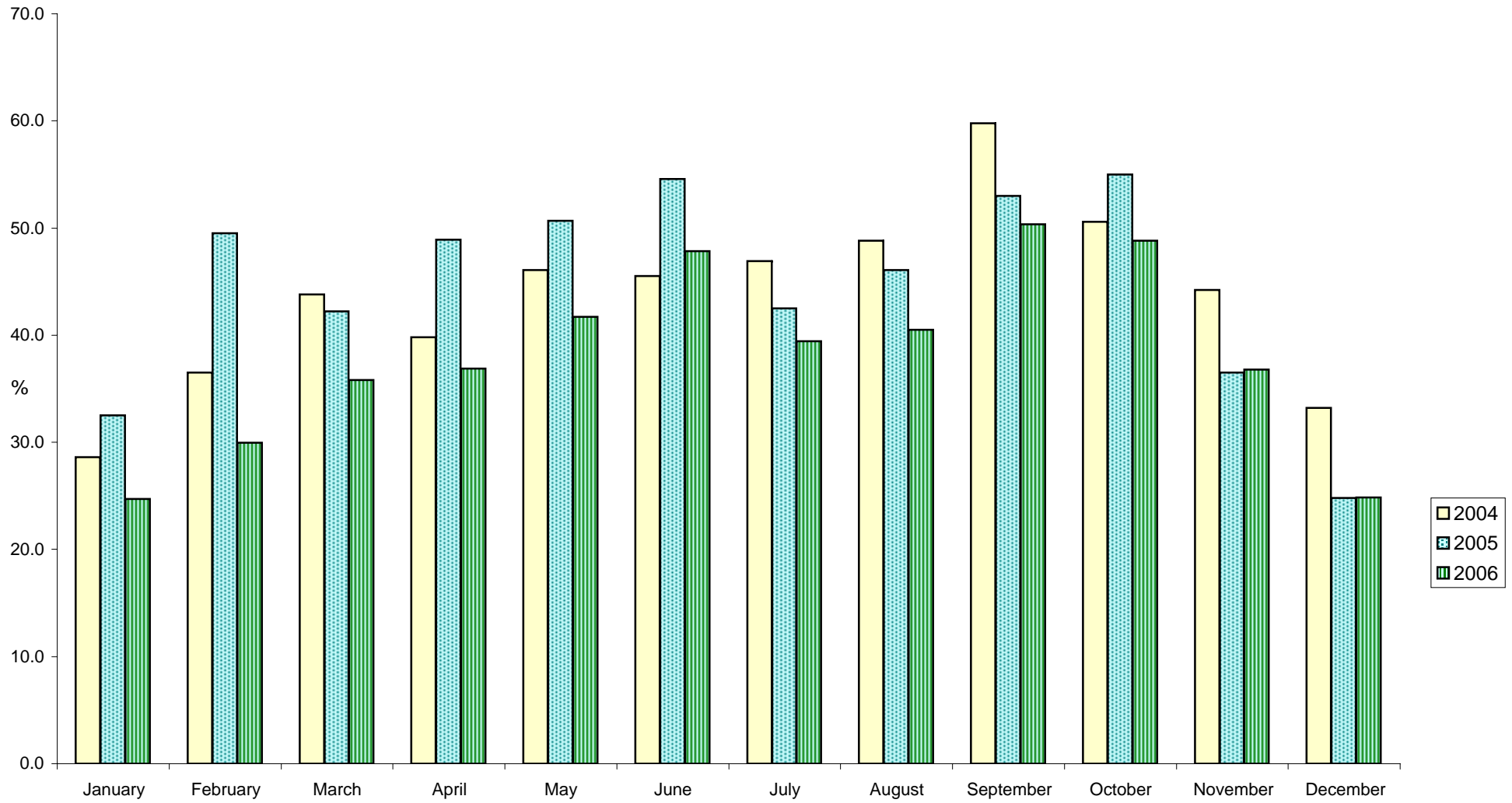


Table 4(a): Number of Arrivals by Month, All Hotels, 1980 - 1986

<u>MONTH</u>	<u>(00's)</u>							<u>(00's)</u>						
	<u>ALL ARRIVALS</u>							<u>TOURIST ARRIVALS</u>						
	<u>1980</u>	<u>1981</u>	<u>1982</u>	<u>1983</u>	<u>1984</u>	<u>1985</u>	<u>1986</u>	<u>1980</u>	<u>1981</u>	<u>1982</u>	<u>1983</u>	<u>1984</u>	<u>1985</u>	<u>1986</u>
JANUARY	27	20	16	16	18	26	31	23	16	11	11	11	10	24
FEBRUARY	31	26	25	23	25	45	40	26	21	18	16	13	27	29
MARCH	37	33	37	26	26	49	46	31	26	24	18	17	36	38
APRIL	35	29	34	30	29	46	44	29	24	23	19	16	33	36
MAY	43	29	33	34	38	46	57	32	23	26	21	20	37	40
JUNE	44	28	32	27	28	46	51	27	23	23	20	21	35	39
JULY	34	31	29	31	33	52	45	29	21	23	20	21	38	34
AUGUST	39	32	34	32	34	54	52	34	23	22	21	23	43	40
SEPTEMBER	38	33	33	36	35	54	55	34	25	23	25	26	41	44
OCTOBER	37	31	31	30	40	51	50	31	25	20	19	27	35	42
NOVEMBER	26	23	23	25	30	46	49	20	18	17	16	20	35	43
DECEMBER	22	20	22	21	21	36	46	15	16	15	14	12	24	29
TOTAL	413	334	349	331	357	551	566	331	261	245	220	227	394	438

Note: Yearly totals have been rounded off and need not necessarily equal the sum of the rounded-off monthly figures.

Table 4(b): Number of Arrivals by Month, All Hotels, 1987 - 1993

<u>MONTH</u>	<u>(00's)</u> <u>ALL ARRIVALS</u>							<u>(00's)</u> <u>TOURIST ARRIVALS</u>						
	<u>1987</u>	<u>1988</u>	<u>1989</u>	<u>1990</u>	<u>1991</u>	<u>1992</u>	<u>1993</u>	<u>1987</u>	<u>1988</u>	<u>1989</u>	<u>1990</u>	<u>1991</u>	<u>1992</u>	<u>1993</u>
JANUARY	41	46	34	34	34	23	19	37	32	24	20	19	16	15
FEBRUARY	46	47	43	41	34	30	24	35	36	35	24	19	22	15
MARCH	63	63	52	79	39	34	29	50	47	41	30	23	27	21
APRIL	62	61	53	84	36	36	30	50	48	41	34	21	28	21
MAY	58	60	46	60	42	40	38	38	46	36	28	24	29	26
JUNE	51	58	50	53	32	41	35	35	40	42	23	21	28	24
JULY	44	54	66	63	39	38	33	36	36	39	31	25	26	22
AUGUST	51	53	59	46	35	36	33	41	36	41	25	24	29	25
SEPTEMBER	62	58	74	58	43	41	44	48	38	44	31	24	26	29
OCTOBER	63	49	77	50	47	39	45	48	36	53	26	25	27	29
NOVEMBER	60	58	67	41	26	28	35	48	36	44	21	16	20	23
DECEMBER	52	42	58	39	25	24	25	34	26	35	20	17	19	19
TOTAL	653	649	679	648	432	410	391	500	457	475	313	260	299	270

Note: Yearly totals have been rounded off and need not necessarily equal the sum of the rounded-off monthly figures.

Table 4(c): Number of Arrivals by Month, All Hotels, 1994 - 2000

<u>MONTH</u>	<u>(00's)</u>							<u>(00's)</u>						
	<u>ALL ARRIVALS</u>							<u>TOURIST ARRIVALS</u>						
	<u>1994</u>	<u>1995</u>	<u>1996</u>	<u>1997</u>	<u>1998</u>	<u>1999</u>	<u>2000</u>	<u>1994</u>	<u>1995</u>	<u>1996</u>	<u>1997</u>	<u>1998</u>	<u>1999</u>	<u>2000</u>
JANUARY	25	20	28	24	30	26	22	17	16	20	15	16	17	15
FEBRUARY	24	28	34	32	28	26	28	17	22	25	19	17	17	19
MARCH	31	34	40	33	31	36	39	21	24	27	19	21	23	28
APRIL	31	40	41	39	34	37	42	21	28	30	22	23	23	30
MAY	39	38	42	48	38	36	48	24	26	26	28	25	25	35
JUNE	33	39	41	47	35	38	48	23	27	26	27	24	25	36
JULY	34	46	38	43	34	34	40	24	33	27	28	23	22	29
AUGUST	33	44	39	55	42	43	46	23	31	30	33	30	28	35
SEPTEMBER	43	57	47	54	40	42	56	29	41	30	31	30	27	41
OCTOBER	39	41	43	39	42	43	48	27	32	31	28	29	30	36
NOVEMBER	25	31	33	38	36	37	39	17	25	22	20	24	23	29
DECEMBER	22	32	35	32	28	24	33	16	25	25	19	18	17	24
TOTAL	379	451	461	484	416	421	489	259	331	319	289	279	277	359

Note: Yearly totals have been rounded off and need not necessarily equal the sum of the rounded-off monthly figures.

Table 4(d): Number of Arrivals by Month, All Hotels, 2001 - 2006

<u>MONTH</u>	<u>(00's)</u> <u>ALL ARRIVALS</u>						<u>(00's)</u> <u>TOURIST ARRIVALS</u>					
	<u>2001</u>	<u>2002</u>	<u>2003</u>	<u>2004</u>	<u>2005</u>	<u>2006</u>	<u>2001</u>	<u>2002</u>	<u>2003</u>	<u>2004</u>	<u>2005</u>	<u>2006</u>
JANUARY	31	32	37	38	40	43	23	23	23	27	28	25
FEBRUARY	33	41	44	44	46	45	24	30	29	30	33	26
MARCH	45	46	54	55	50	55	32	35	36	38	37	36
APRIL	43	45	50	47	51	53	31	32	32	34	36	36
MAY	50	51	56	57	57	57	35	38	35	44	43	42
JUNE	50	43	59	55	51	55	34	30	37	38	38	39
JULY	50	58	52	53	50	50	37	40	35	39	35	32
AUGUST	53	58	59	56	55	45	41	41	41	42	40	32
SEPTEMBER	54	66	58	62	57	54	41	47	40	46	41	38
OCTOBER	51	62	56	56	53	54	38	40	39	41	38	39
NOVEMBER	43	51	54	54	44	44	34	33	35	38	27	30
DECEMBER	35	41	39	39	37	38	25	27	26	28	22	22
TOTAL	538	594	617	617	588	592	394	415	409	445	419	398

Note: Yearly totals have been rounded off and need not necessarily equal the sum of the rounded-off monthly figures.

ALL ARRIVALS AT HOTELS, 2004 - 2006

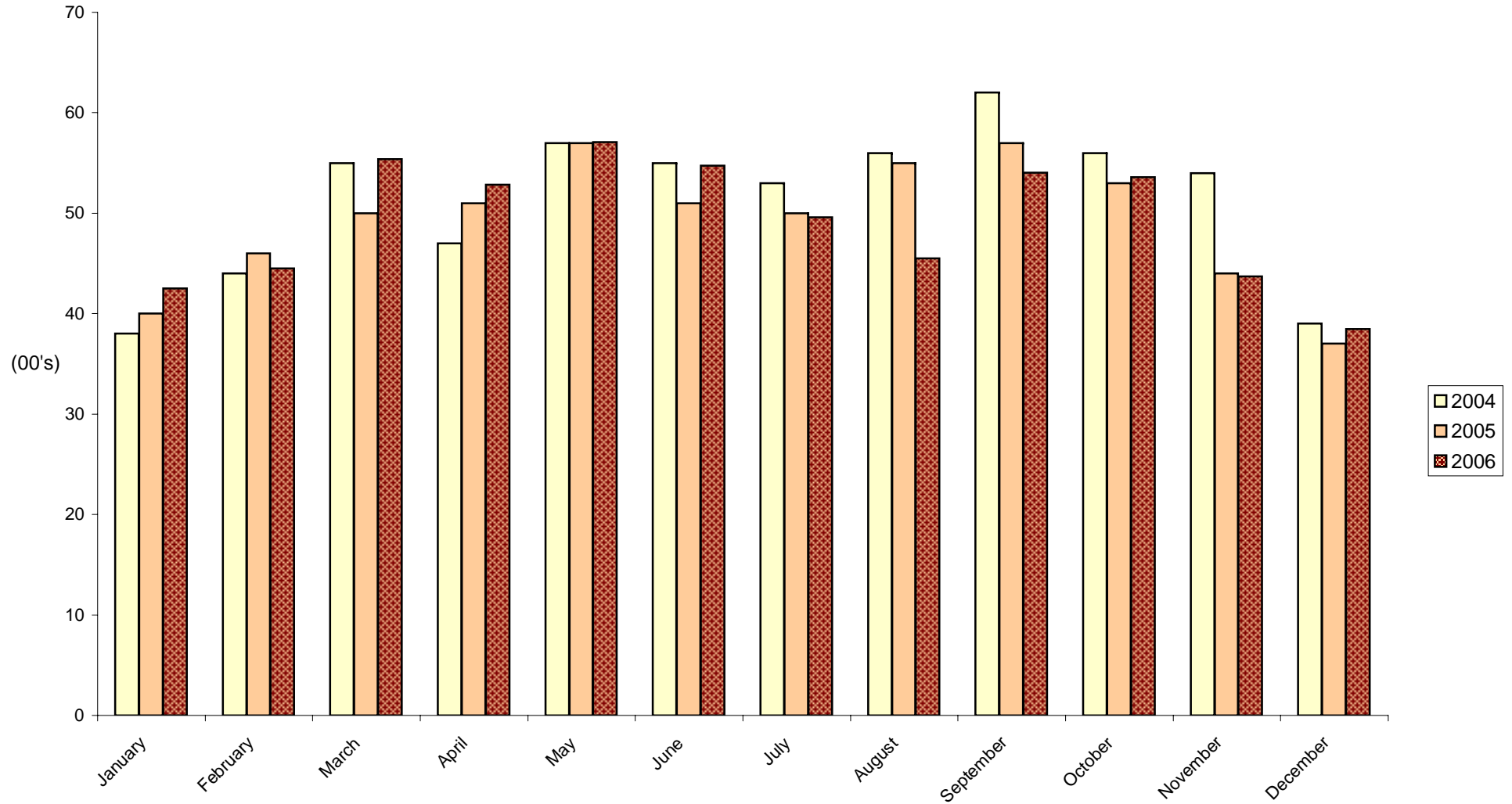


Table 5(a): Guest Nights Sold/Offered, % Sleeper Occupancy, All Hotels, 1980 - 1983

<u>MONTH</u>	<u>ALL ARRIVALS</u>											
	<u>(000's)</u>				<u>(000's)</u>				<u>%</u>			
	<u>GUEST NIGHTS SOLD</u>				<u>GUEST NIGHTS OFFERED</u>				<u>SLEEPER OCCUPANCY</u>			
	<u>1980</u>	<u>1981</u>	<u>1982</u>	<u>1983</u>	<u>1980</u>	<u>1981</u>	<u>1982</u>	<u>1983</u>	<u>1980</u>	<u>1981</u>	<u>1982</u>	<u>1983</u>
JANUARY	12	10	9	9	45	44	43	45	26.6	23.2	20.2	19.0
FEBRUARY	14	13	14	11	42	40	40	41	32.9	31.9	35.2	27.7
MARCH	21	17	19	16	46	44	44	46	46.4	38.8	42.4	34.8
APRIL	23	18	22	16	47	44	44	45	48.5	40.3	50.5	35.9
MAY	22	16	23	20	48	44	45	46	46.9	37.1	50.0	43.2
JUNE	28	18	24	23	47	42	45	45	60.2	42.0	54.7	49.7
JULY	26	17	24	20	48	42	46	47	53.1	40.2	51.9	42.3
AUGUST	31	19	24	25	47	43	45	47	64.9	43.5	52.0	54.0
SEPTEMBER	30	19	22	25	47	43	43	46	63.0	44.1	51.7	54.6
OCTOBER	24	18	19	21	46	47	45	47	52.2	39.1	42.6	43.7
NOVEMBER	14	13	12	13	44	42	44	45	31.8	30.1	27.9	30.2
DECEMBER	11	10	11	11	44	44	45	46	26.2	23.6	25.6	24.4
TOTAL	256	188	223	210	551	519	529	546	46.5	36.2	42.2	38.4

Note: Yearly totals have been rounded off and need not necessarily equal the sum of the rounded-off monthly figures.

Table 5(b): Guest Nights Sold/Offered, % Sleeper Occupancy, All Hotels, 1984 - 1987

<u>MONTH</u>	<u>ALL ARRIVALS</u>											
	<u>(000's)</u>				<u>(000's)</u>				<u>%</u>			
	<u>GUEST NIGHTS SOLD</u>				<u>GUEST NIGHTS OFFERED</u>				<u>SLEEPER OCCUPANCY</u>			
	<u>1984</u>	<u>1985</u>	<u>1986</u>	<u>1987</u>	<u>1984</u>	<u>1985</u>	<u>1986</u>	<u>1987</u>	<u>1984</u>	<u>1985</u>	<u>1986</u>	<u>1987</u>
JANUARY	9	11	13	19	46	45	43	46	20.7	24.3	30.1	42.1
FEBRUARY	13	18	15	18	43	41	38	42	30.0	42.7	39.0	43.9
MARCH	15	25	21	26	47	46	43	46	32.5	54.0	48.7	57.5
APRIL	18	25	18	24	45	45	42	43	39.9	56.8	42.0	55.6
MAY	23	23	25	25	46	47	45	45	50.5	50.3	57.2	55.7
JUNE	23	31	29	22	45	45	43	44	50.8	69.4	67.9	49.1
JULY	22	28	23	20	45	48	44	45	50.1	58.0	51.8	44.5
AUGUST	25	32	27	26	47	48	46	45	53.0	67.7	59.7	57.7
SEPTEMBER	27	32	29	29	44	46	44	45	61.0	68.2	64.8	65.6
OCTOBER	25	27	26	26	46	48	45	44	53.2	55.6	59.3	58.8
NOVEMBER	15	17	23	24	45	46	43	44	32.3	36.9	54.1	54.4
DECEMBER	11	13	17	20	47	47	44	46	22.9	27.3	38.5	42.5
TOTAL	226	282	266	279	546	552	520	535	41.3	51.0	51.3	52.3

Note: Yearly totals have been rounded off and need not necessarily equal the sum of the rounded-off monthly figures.

Table 5(c): Guest Nights Sold/Offered, % Sleeper Occupancy, All Hotels, 1988 - 1991

<u>MONTH</u>	<u>ALL ARRIVALS</u>											
	<u>(000's)</u>				<u>(000's)</u>				<u>%</u>			
	<u>GUEST NIGHTS SOLD</u>				<u>GUEST NIGHTS OFFERED</u>				<u>SLEEPER OCCUPANCY</u>			
	<u>1988</u>	<u>1989</u>	<u>1990</u>	<u>1991</u>	<u>1988</u>	<u>1989</u>	<u>1990</u>	<u>1991</u>	<u>1988</u>	<u>1989</u>	<u>1990</u>	<u>1991</u>
JANUARY	16	15	11	12	46	42	37	40	35.8	35.2	31.2	29.4
FEBRUARY	19	18	14	13	44	40	37	37	42.6	46.0	37.3	34.5
MARCH	26	22	19	17	48	42	42	44	53.6	52.0	45.3	37.5
APRIL	26	23	23	14	45	42	41	41	57.1	54.8	55.4	34.0
MAY	26	19	21	17	47	44	42	41	55.1	41.9	50.4	40.2
JUNE	29	19	15	16	47	43	39	44	61.6	43.9	37.3	35.8
JULY	27	20	18	16	48	43	42	43	55.8	46.8	43.8	37.9
AUGUST	24	19	15	16	48	43	41	40	50.4	45.1	35.2	41.2
SEPTEMBER	26	19	18	17	44	42	41	44	60.4	46.0	44.4	39.2
OCTOBER	26	19	18	18	46	40	40	43	56.4	46.2	44.5	42.5
NOVEMBER	22	14	12	13	43	38	40	41	51.4	38.2	30.2	31.1
DECEMBER	19	13	13	10	45	42	39	45	42.6	31.2	32.4	22.4
TOTAL	286	220	197	178	551	501	481	502	52.0	44.0	40.8	35.5

Note: Yearly totals have been rounded off and need not necessarily equal the sum of the rounded-off monthly figures.

Table 5(d): Guest Nights Sold/Offered, % Sleeper Occupancy, All Hotels, 1992 - 1995

<u>MONTH</u>	<u>ALL ARRIVALS</u>											
	<u>(000's)</u>				<u>(000's)</u>				<u>%</u>			
	<u>GUEST NIGHTS SOLD</u>				<u>GUEST NIGHTS OFFERED</u>				<u>SLEEPER OCCUPANCY</u>			
	<u>1992</u>	<u>1993</u>	<u>1994</u>	<u>1995</u>	<u>1992</u>	<u>1993</u>	<u>1994</u>	<u>1995</u>	<u>1992</u>	<u>1993</u>	<u>1994</u>	<u>1995</u>
JANUARY	9	7	10	6	42	33	34	32	20.6	21.5	29.4	19.0
FEBRUARY	9	9	9	10	41	30	30	28	22.8	30.1	31.3	34.9
MARCH	14	12	12	10	46	33	33	31	29.6	36.2	37.2	33.4
APRIL	14	12	12	13	42	32	31	25	32.6	38.3	39.2	49.5
MAY	15	16	15	13	43	34	35	31	35.6	45.6	42.5	41.4
JUNE	16	15	14	14	47	32	33	30	34.8	48.0	40.6	46.3
JULY	16	14	15	15	45	32	35	32	35.2	41.8	42.4	48.2
AUGUST	14	14	13	15	44	33	35	32	32.2	44.0	37.0	46.2
SEPTEMBER	16	18	16	18	41	32	33	31	39.7	56.2	48.9	58.0
OCTOBER	15	17	15	13	42	34	35	32	34.6	50.9	43.9	41.1
NOVEMBER	10	13	9	9	32	32	33	31	32.6	39.4	27.8	28.1
DECEMBER	9	10	9	9	33	33	34	32	27.0	29.6	25.2	26.7
TOTAL	157	157	149	144	497	391	401	369	31.6	40.2	37.2	39.2

Note: Yearly totals have been rounded off and need not necessarily equal the sum of the rounded-off monthly figures.

Table 5(e): Guest Nights Sold/Offered, % Sleeper Occupancy, All Hotels, 1996 - 1999

<u>MONTH</u>	<u>ALL ARRIVALS</u>											
	<u>(000's)</u>				<u>(000's)</u>				<u>%</u>			
	<u>GUEST NIGHTS SOLD</u>				<u>GUEST NIGHTS OFFERED</u>				<u>SLEEPER OCCUPANCY</u>			
	<u>1996</u>	<u>1997</u>	<u>1998</u>	<u>1999</u>	<u>1996</u>	<u>1997</u>	<u>1998</u>	<u>1999</u>	<u>1996</u>	<u>1997</u>	<u>1998</u>	<u>1999</u>
JANUARY	8	8	7	8	32	31	30	29	24.9	24.1	24.8	28.8
FEBRUARY	9	10	9	9	30	29	25	26	29.9	34.1	35.4	34.2
MARCH	12	10	11	13	32	31	28	29	36.3	33.0	38.8	45.5
APRIL	12	11	11	13	31	31	26	29	39.1	36.3	42.4	44.3
MAY	14	14	12	13	32	32	27	29	43.0	45.0	45.6	43.7
JUNE	13	13	13	14	30	30	28	29	37.2	44.4	45.9	49.1
JULY	12	14	13	13	31	31	29	29	39.0	44.1	43.9	44.5
AUGUST	13	16	16	16	31	31	29	29	42.3	51.3	54.4	56.3
SEPTEMBER	16	16	17	16	31	31	28	29	51.9	50.7	59.8	56.9
OCTOBER	13	14	15	15	31	31	29	31	42.8	44.1	50.2	50.0
NOVEMBER	10	10	12	14	30	31	28	30	31.3	31.7	43.8	46.0
DECEMBER	9	9	9	8	31	31	29	31	29.0	28.2	32.2	25.6
TOTAL	141	144	145	154	372	370	335	351	37.8	39.0	43.1	43.8

Note: Yearly totals have been rounded off and need not necessarily equal the sum of the rounded-off monthly figures.

Table 5(f): Guest Nights Sold/Offered, % Sleeper Occupancy, All Hotels, 2000 - 2003

<u>MONTH</u>	<u>ALL ARRIVALS</u>											
	<u>(000's)</u>				<u>(000's)</u>				<u>%</u>			
	<u>GUEST NIGHTS SOLD</u>				<u>GUEST NIGHTS OFFERED</u>				<u>SLEEPER OCCUPANCY</u>			
	<u>2000</u>	<u>2001</u>	<u>2002</u>	<u>2003</u>	<u>2000</u>	<u>2001</u>	<u>2002</u>	<u>2003</u>	<u>2000</u>	<u>2001</u>	<u>2002</u>	<u>2003</u>
JANUARY	6	8	9	10	31	31	31	31	20.0	27.0	30.5	33.1
FEBRUARY	9	11	12	13	29	28	28	28	30.4	40.0	42.9	45.5
MARCH	12	15	15	16	31	31	31	31	37.5	47.9	47.7	51.8
APRIL	14	15	14	15	30	30	30	30	45.0	48.4	46.3	51.1
MAY	19	17	16	17	31	31	31	31	60.3	55.0	51.3	54.4
JUNE	17	18	13	18	30	30	30	30	56.6	58.3	43.6	60.9
JULY	16	17	18	16	31	31	31	31	50.2	53.5	56.8	53.2
AUGUST	16	18	18	18	31	31	31	31	51.8	57.4	58.8	58.2
SEPTEMBER	19	20	21	20	31	30	30	30	61.7	64.6	69.3	64.8
OCTOBER	15	18	19	18	31	31	31	31	48.7	57.3	61.3	57.0
NOVEMBER	12	13	15	15	30	30	30	30	38.9	43.5	50.9	49.5
DECEMBER	11	11	11	11	31	31	31	31	34.1	34.1	36.4	34.6
TOTAL	164	179	182	188	368	366	367	367	44.6	48.9	49.7	51.2

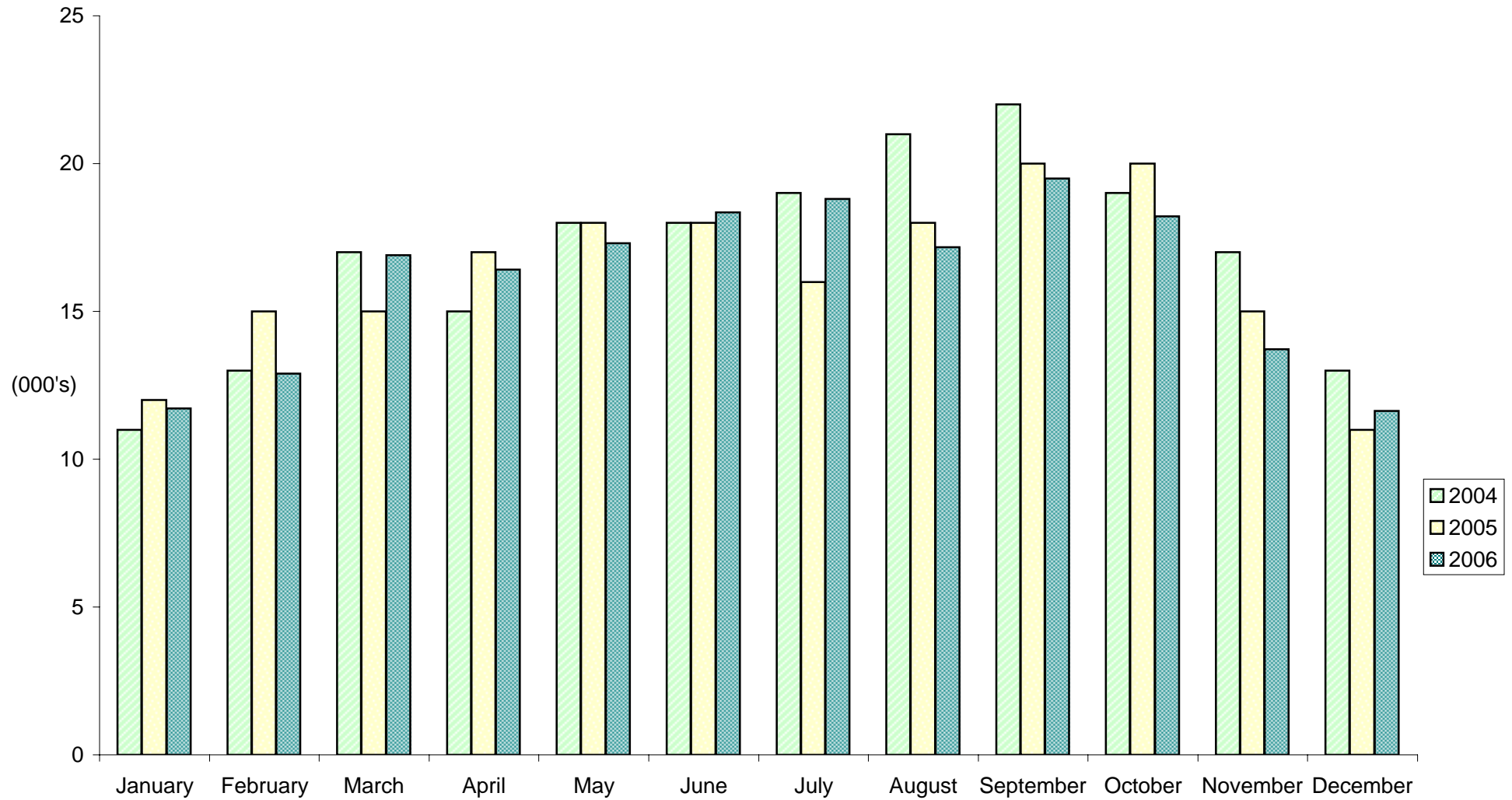
Note: Yearly totals have been rounded off and need not necessarily equal the sum of the rounded-off monthly figures.

Table 5(g): Guest Nights Sold/Offered, % Sleeper Occupancy, All Hotels, 2004 - 2006

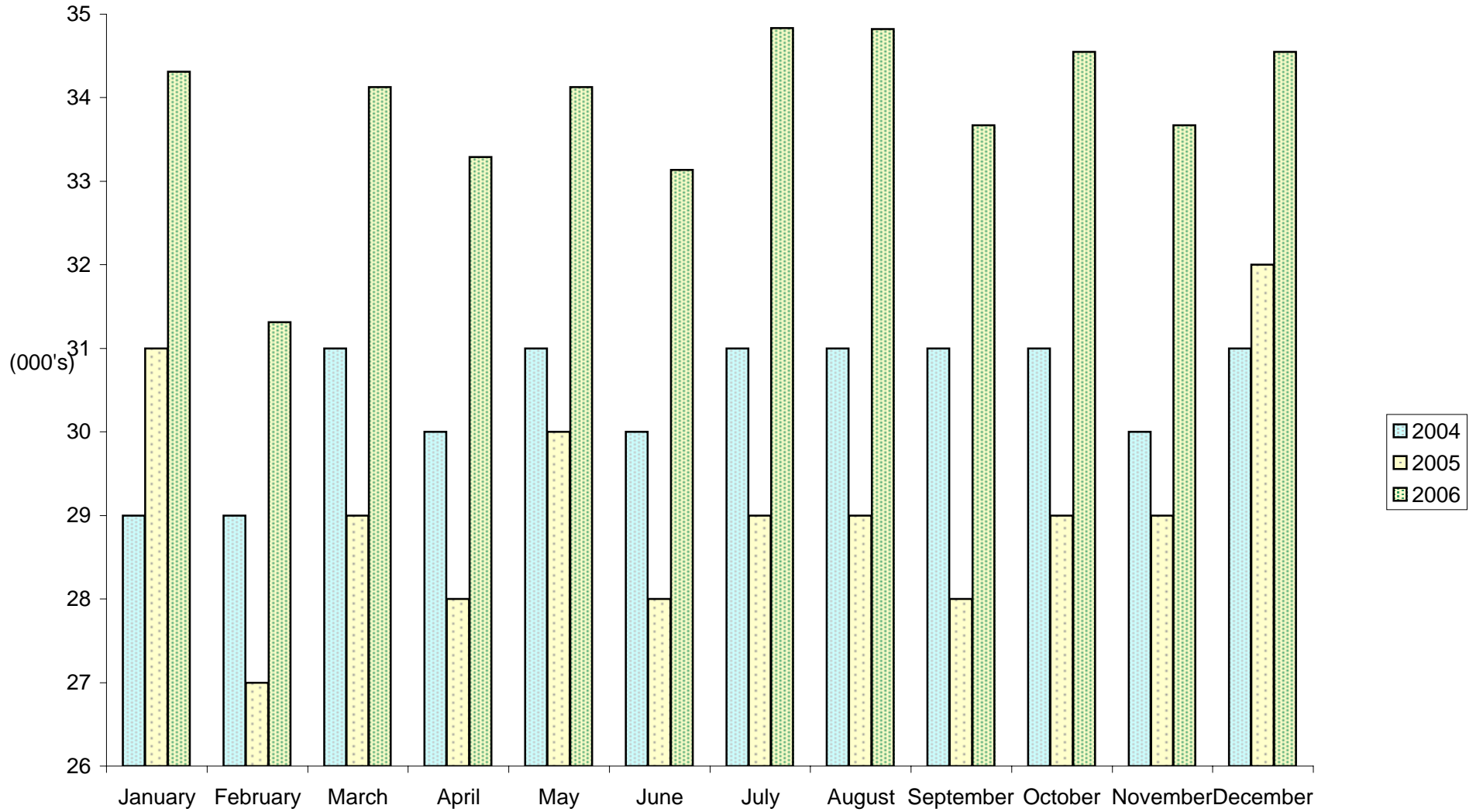
<u>MONTH</u>	<u>ALL ARRIVALS</u>								
	<u>(000's)</u>			<u>(000's)</u>			<u>%</u>		
	<u>GUEST NIGHTS SOLD</u>			<u>GUEST NIGHTS OFFERED</u>			<u>SLEEPER OCCUPANCY</u>		
	<u>2004</u>	<u>2005</u>	<u>2006</u>	<u>2004</u>	<u>2005</u>	<u>2006</u>	<u>2004</u>	<u>2005</u>	<u>2006</u>
JANUARY	11	12	12	29	31	34	36.7	38.7	34.2
FEBRUARY	13	15	13	29	27	31	45.2	58.0	41.2
MARCH	17	15	17	31	29	34	56.3	52.8	49.5
APRIL	15	17	16	30	28	33	50.0	59.3	49.3
MAY	18	18	17	31	30	34	57.8	60.4	50.7
JUNE	18	18	18	30	28	33	59.4	64.5	55.4
JULY	19	16	19	31	29	35	61.2	57.1	54.0
AUGUST	21	18	17	31	29	35	65.9	62.0	49.3
SEPTEMBER	22	20	19	31	28	34	71.7	70.1	57.9
OCTOBER	19	20	18	31	29	35	60.1	68.5	52.7
NOVEMBER	17	15	14	30	29	34	55.0	52.6	40.7
DECEMBER	13	11	12	31	32	35	40.1	33.7	33.7
TOTAL	202	196	192	366	349	406	55.1	56.2	47.3

Note: Yearly totals have been rounded off and need not necessarily equal the sum of the rounded-off monthly figures.

GUEST NIGHTS SOLD, ALL ARRIVALS, 2004 - 2006



GUEST NIGHTS OFFERED, ALL ARRIVALS, 2004 - 2006



% SLEEPER OCCUPANCY, ALL ARRIVALS, 2004 - 2006

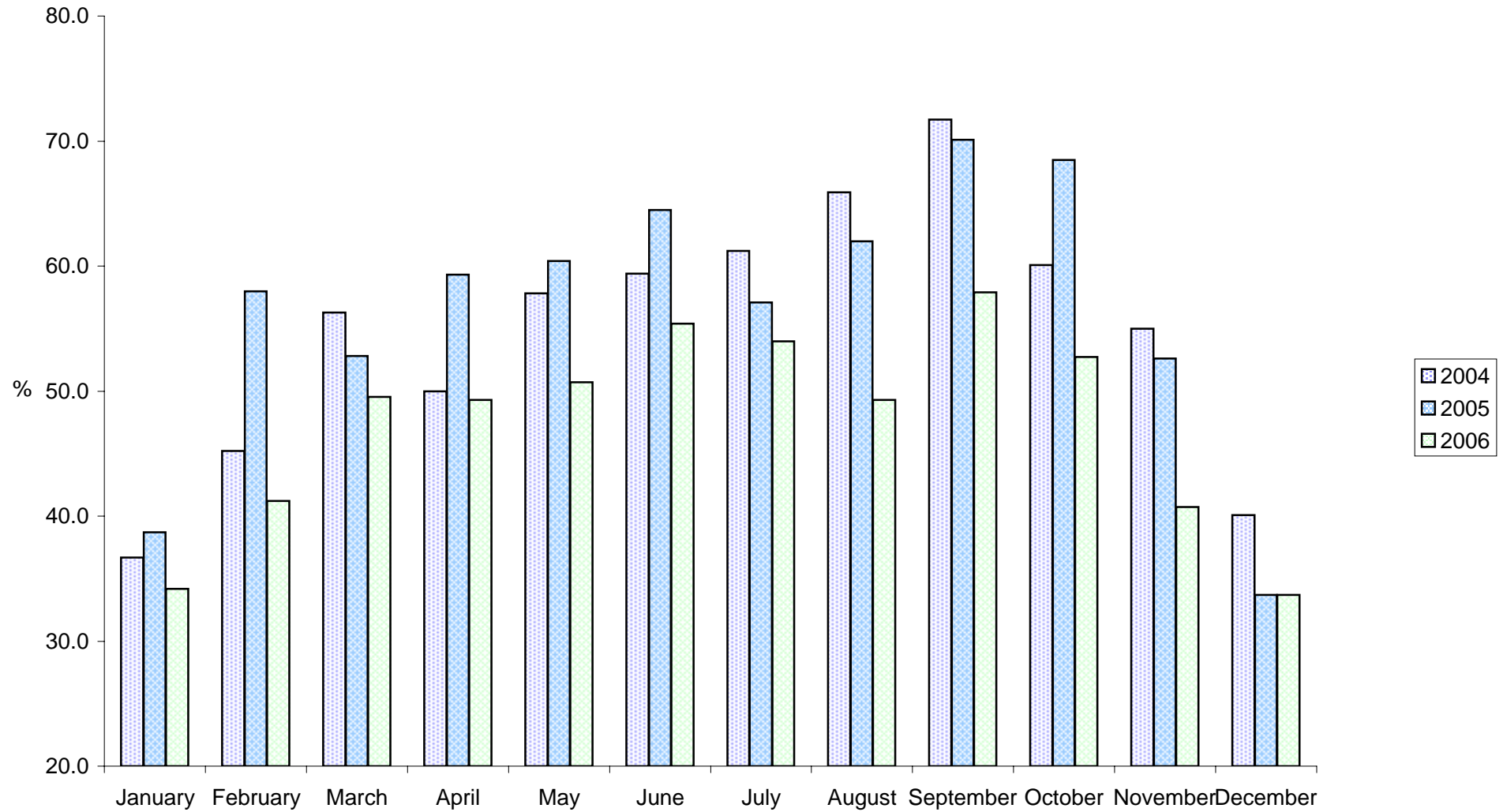


Table 6(a): Guest Nights Sold/Offered, % Sleeper Occupancy, All Hotels, 1980 - 1983

<u>MONTH</u>	<u>TOURIST ARRIVALS</u>											
	<u>(000's)</u>				<u>(000's)</u>				<u>%</u>			
	<u>GUEST NIGHTS SOLD</u>				<u>GUEST NIGHTS OFFERED</u>				<u>SLEEPER OCCUPANCY</u>			
	<u>1980</u>	<u>1981</u>	<u>1982</u>	<u>1983</u>	<u>1980</u>	<u>1981</u>	<u>1982</u>	<u>1983</u>	<u>1980</u>	<u>1981</u>	<u>1982</u>	<u>1983</u>
JANUARY	10	8	7	7	45	44	43	45	22.2	18.0	15.3	15.5
FEBRUARY	11	9	10	8	42	40	40	41	26.4	21.4	24.8	20.7
MARCH	17	13	13	11	46	44	44	46	36.4	30.4	30.4	24.7
APRIL	17	14	16	10	47	44	44	45	37.1	31.1	36.1	23.4
MAY	17	13	16	14	48	44	45	46	35.9	30.4	35.2	29.4
JUNE	22	14	19	18	47	42	45	45	46.3	32.7	42.2	38.7
JULY	23	12	19	16	48	42	46	47	46.7	28.5	40.5	33.6
AUGUST	28	15	18	19	47	43	45	47	59.3	34.6	40.2	41.9
SEPTEMBER	25	16	16	19	47	43	43	46	53.6	37.2	43.4	41.7
OCTOBER	21	15	14	14	46	47	45	47	45.7	32.1	29.9	30.5
NOVEMBER	11	10	9	10	44	42	44	45	25.1	24.4	21.4	21.2
DECEMBER	8	8	8	9	44	44	45	46	19.2	18.0	18.3	18.4
TOTAL	210	147	165	155	551	519	529	546	38.2	28.3	31.1	28.4

Note: Yearly totals have been rounded off and need not necessarily equal the sum of the rounded-off monthly figures.

Table 6(b): Guest Nights Sold/Offered, % Sleeper Occupancy, All Hotels, 1984 - 1987

<u>MONTH</u>	<u>TOURIST ARRIVALS</u>											
	<u>(000's)</u>				<u>(000's)</u>				<u>%</u>			
	<u>GUEST NIGHTS SOLD</u>				<u>GUEST NIGHTS OFFERED</u>				<u>SLEEPER OCCUPANCY</u>			
	<u>1984</u>	<u>1985</u>	<u>1986</u>	<u>1987</u>	<u>1984</u>	<u>1985</u>	<u>1986</u>	<u>1987</u>	<u>1984</u>	<u>1985</u>	<u>1986</u>	<u>1987</u>
JANUARY	7	8	10	15	46	45	43	46	15.0	16.5	22.1	33.6
FEBRUARY	8	14	12	15	43	41	38	42	19.4	33.8	31.0	34.8
MARCH	12	19	16	21	47	46	43	46	24.6	42.2	38.1	46.3
APRIL	13	18	13	19	45	45	42	43	28.4	40.2	30.7	44.9
MAY	15	18	19	18	46	47	45	45	33.2	39.4	41.9	38.6
JUNE	18	24	23	16	45	45	43	44	40.6	52.9	52.8	36.9
JULY	18	23	18	15	45	48	44	45	40.0	47.5	41.0	34.3
AUGUST	20	27	21	19	47	48	46	45	42.0	57.0	46.3	42.5
SEPTEMBER	22	26	21	22	44	46	44	45	50.2	56.7	48.1	49.7
OCTOBER	19	19	20	21	46	48	45	44	41.0	40.2	45.3	46.4
NOVEMBER	11	13	18	18	45	46	43	44	24.6	28.4	41.7	41.8
DECEMBER	8	9	12	14	47	47	44	46	17.4	18.8	27.5	29.8
TOTAL	171	218	203	213	546	552	520	535	31.3	39.6	38.6	40.0

Note: Yearly totals have been rounded off and need not necessarily equal the sum of the rounded-off monthly figures.

Table 6(c): Guest Nights Sold/Offered, % Sleeper Occupancy, All Hotels, 1988 - 1991

TOURIST ARRIVALS

<u>MONTH</u>	<u>(000's)</u>				<u>(000's)</u>				<u>%</u>			
	<u>GUEST NIGHTS SOLD</u>				<u>GUEST NIGHTS OFFERED</u>				<u>SLEEPER OCCUPANCY</u>			
	<u>1988</u>	<u>1989</u>	<u>1990</u>	<u>1991</u>	<u>1988</u>	<u>1989</u>	<u>1990</u>	<u>1991</u>	<u>1988</u>	<u>1989</u>	<u>1990</u>	<u>1991</u>
JANUARY	13	10	8	7	46	42	37	40	27.5	23.7	22.7	17.7
FEBRUARY	14	13	10	8	44	40	37	37	32.2	33.4	27.1	20.2
MARCH	19	15	13	8	48	42	42	44	39.8	36.2	31.0	19.1
APRIL	20	16	14	9	45	42	41	41	44.8	37.0	34.0	21.9
MAY	19	12	12	10	47	44	42	41	40.3	27.9	29.4	23.3
JUNE	20	14	10	8	47	43	39	44	43.5	32.7	24.3	19.4
JULY	19	13	12	10	48	43	42	43	39.2	30.6	27.4	23.2
AUGUST	17	13	10	8	48	43	41	40	34.5	30.6	23.1	21.3
SEPTEMBER	17	12	12	8	44	42	41	44	37.8	29.8	30.0	18.2
OCTOBER	17	14	11	10	46	40	40	43	37.9	34.0	27.8	23.3
NOVEMBER	14	11	8	7	43	38	40	41	32.5	27.6	19.5	16.4
DECEMBER	11	9	8	6	45	42	39	45	24.3	21.7	20.9	12.9
TOTAL	200	152	128	99	551	501	481	502	36.2	30.4	26.5	19.7

Note: Yearly totals have been rounded off and need not necessarily equal the sum of the rounded-off monthly figures.

Table 6(d): Guest Nights Sold/Offered, % Sleeper Occupancy, All Hotels, 1992 - 1995

TOURIST ARRIVALS

<u>MONTH</u>	<u>(000's)</u>				<u>(000's)</u>				<u>%</u>			
	<u>GUEST NIGHTS SOLD</u>				<u>GUEST NIGHTS OFFERED</u>				<u>SLEEPER OCCUPANCY</u>			
	<u>1992</u>	<u>1993</u>	<u>1994</u>	<u>1995</u>	<u>1992</u>	<u>1993</u>	<u>1994</u>	<u>1995</u>	<u>1992</u>	<u>1993</u>	<u>1994</u>	<u>1995</u>
JANUARY	5	4	7	5	42	33	34	32	12.9	12.4	19.5	15.1
FEBRUARY	6	5	6	7	41	30	30	28	15.4	17.7	21.1	25.8
MARCH	9	8	8	8	46	33	33	31	19.3	23.0	24.5	26.4
APRIL	9	8	9	10	42	32	31	25	21.7	25.2	27.1	38.1
MAY	9	10	10	9	43	34	35	31	20.7	28.5	28.5	30.8
JUNE	10	10	9	11	47	32	33	30	22.0	32.7	28.3	37.2
JULY	10	8	10	11	45	32	35	32	21.3	26.2	28.7	36.2
AUGUST	10	10	8	11	44	33	35	32	22.0	30.5	25.6	34.8
SEPTEMBER	9	12	12	14	41	32	33	31	22.7	36.8	35.2	45.6
OCTOBER	9	11	11	11	42	34	35	32	20.8	33.2	30.4	34.1
NOVEMBER	6	9	7	7	32	32	33	31	20.1	27.8	20.6	23.8
DECEMBER	6	7	6	7	33	33	34	32	17.5	21.8	18.9	21.8
TOTAL	98	103	103	113	497	391	401	369	19.8	26.4	25.8	30.7

Note: Yearly totals have been rounded off and need not necessarily equal the sum of the rounded-off monthly figures.

Table 6(e): Guest Nights Sold/Offered, % Sleeper Occupancy, All Hotels, 1996 - 1999

TOURIST ARRIVALS

<u>MONTH</u>	<u>(000's)</u>				<u>(000's)</u>				<u>%</u>			
	<u>GUEST NIGHTS SOLD</u>				<u>GUEST NIGHTS OFFERED</u>				<u>SLEEPER OCCUPANCY</u>			
	<u>1996</u>	<u>1997</u>	<u>1998</u>	<u>1999</u>	<u>1996</u>	<u>1997</u>	<u>1998</u>	<u>1999</u>	<u>1996</u>	<u>1997</u>	<u>1998</u>	<u>1999</u>
JANUARY	5	5	4	5	32	31	30	29	16.4	15.2	14.4	17.2
FEBRUARY	7	6	5	6	30	29	25	26	22.8	22.3	21.4	21.8
MARCH	9	7	7	8	32	31	28	29	26.7	21.3	25.8	27.7
APRIL	10	7	7	8	31	31	26	29	30.9	23.9	28.8	27.3
MAY	10	10	8	9	32	32	27	29	30.9	29.9	30.6	30.0
JUNE	9	9	9	9	30	30	28	29	30.5	28.9	30.5	31.4
JULY	9	9	8	8	31	31	29	29	29.3	28.6	28.4	27.6
AUGUST	10	11	10	10	31	31	29	29	32.0	34.5	36.5	35.2
SEPTEMBER	10	11	12	10	31	31	28	29	34.3	34.8	41.5	36.2
OCTOBER	10	9	10	11	31	31	29	31	30.9	28.3	34.6	34.3
NOVEMBER	7	6	8	9	30	31	28	30	21.5	20.9	27.1	28.8
DECEMBER	6	6	6	5	31	31	29	31	20.7	18.9	19.5	17.3
TOTAL	101	95	95	98	372	370	335	351	27.2	25.6	28.2	27.9

Note: Yearly totals have been rounded off and need not necessarily equal the sum of the rounded-off monthly figures.

Table 6(f): Guest Nights Sold/Offered, % Sleeper Occupancy, All Hotels, 2000 - 2003

TOURIST ARRIVALS

<u>MONTH</u>	<u>(000's)</u>				<u>(000's)</u>				<u>%</u>			
	<u>GUEST NIGHTS SOLD</u>				<u>GUEST NIGHTS OFFERED</u>				<u>SLEEPER OCCUPANCY</u>			
	<u>2000</u>	<u>2001</u>	<u>2002</u>	<u>2003</u>	<u>2000</u>	<u>2001</u>	<u>2002</u>	<u>2003</u>	<u>2000</u>	<u>2001</u>	<u>2002</u>	<u>2003</u>
JANUARY	4	6	6	6	31	31	31	31	13.0	19.3	20.4	20.6
FEBRUARY	6	8	8	8	29	28	28	28	20.0	26.9	28.8	29.2
MARCH	8	9	11	11	31	31	31	31	25.9	30.7	34.5	34.0
APRIL	9	9	10	10	30	30	30	30	30.8	29.1	33.0	31.5
MAY	12	11	11	11	31	31	31	31	39.1	34.9	36.5	34.5
JUNE	11	12	10	12	30	30	30	30	36.6	39.5	33.0	38.5
JULY	10	11	12	11	31	31	31	31	33.4	37.0	38.7	34.8
AUGUST	12	12	13	13	31	31	31	31	37.6	40.0	40.7	40.4
SEPTEMBER	14	14	15	14	31	30	30	30	44.3	46.3	48.7	46.5
OCTOBER	10	13	13	12	31	31	31	31	31.6	40.6	40.9	40.0
NOVEMBER	8	9	9	10	30	30	30	30	26.7	29.6	29.8	33.2
DECEMBER	7	7	7	6	31	31	31	31	21.6	22.1	22.9	20.9
TOTAL	111	121	125	123	368	366	367	367	30.1	33.0	34.0	33.7

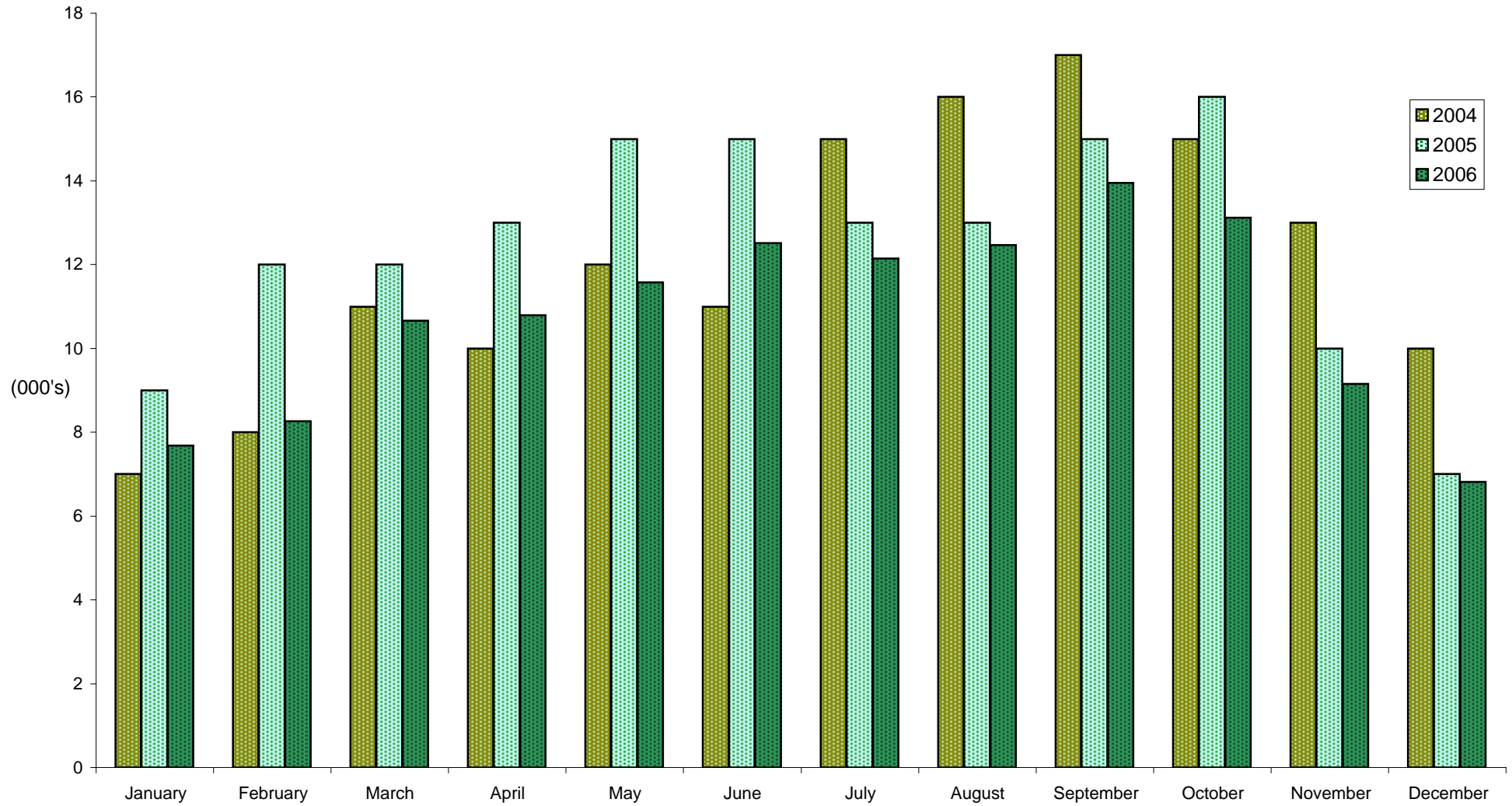
Note: Yearly totals have been rounded off and need not necessarily equal the sum of the rounded-off monthly figures.

Table 6(g): Guest Nights Sold/Offered, % Sleeper Occupancy, All Hotels, 2004 - 2006

<u>MONTH</u>	<u>TOURIST ARRIVALS</u>								
	<u>(000's)</u>			<u>(000's)</u>			<u>%</u>		
	<u>GUEST NIGHTS SOLD</u>			<u>GUEST NIGHTS OFFERED</u>			<u>SLEEPER OCCUPANCY</u>		
	<u>2004</u>	<u>2005</u>	<u>2006</u>	<u>2004</u>	<u>2005</u>	<u>2006</u>	<u>2004</u>	<u>2005</u>	<u>2006</u>
JANUARY	7	9	8	29	31	34	22.9	29.1	22.4
FEBRUARY	8	12	8	29	27	31	27.9	43.6	26.4
MARCH	11	12	11	31	29	34	37.0	42.6	31.2
APRIL	10	13	11	30	28	33	33.9	47.1	32.4
MAY	12	15	12	31	30	34	39.6	48.8	33.9
JUNE	11	15	13	30	28	33	37.4	52.2	37.8
JULY	15	13	12	31	29	35	47.4	43.7	34.9
AUGUST	16	13	12	31	29	35	50.7	46.1	35.8
SEPTEMBER	17	15	14	31	28	34	55.2	54.7	41.4
OCTOBER	15	16	13	31	29	35	48.2	53.4	38.0
NOVEMBER	13	10	9	30	29	34	41.5	36.0	27.2
DECEMBER	10	7	7	31	32	35	30.4	21.1	19.7
TOTAL	145	150	129	366	349	406	39.5	42.9	31.7

Note: Yearly totals have been rounded off and need not necessarily equal the sum of the rounded-off monthly figures.

GUEST NIGHTS SOLD, TOURIST ARRIVALS, 2004 - 2006



% SLEEPER OCCUPANCY, TOURIST ARRIVALS, 2004 - 2006

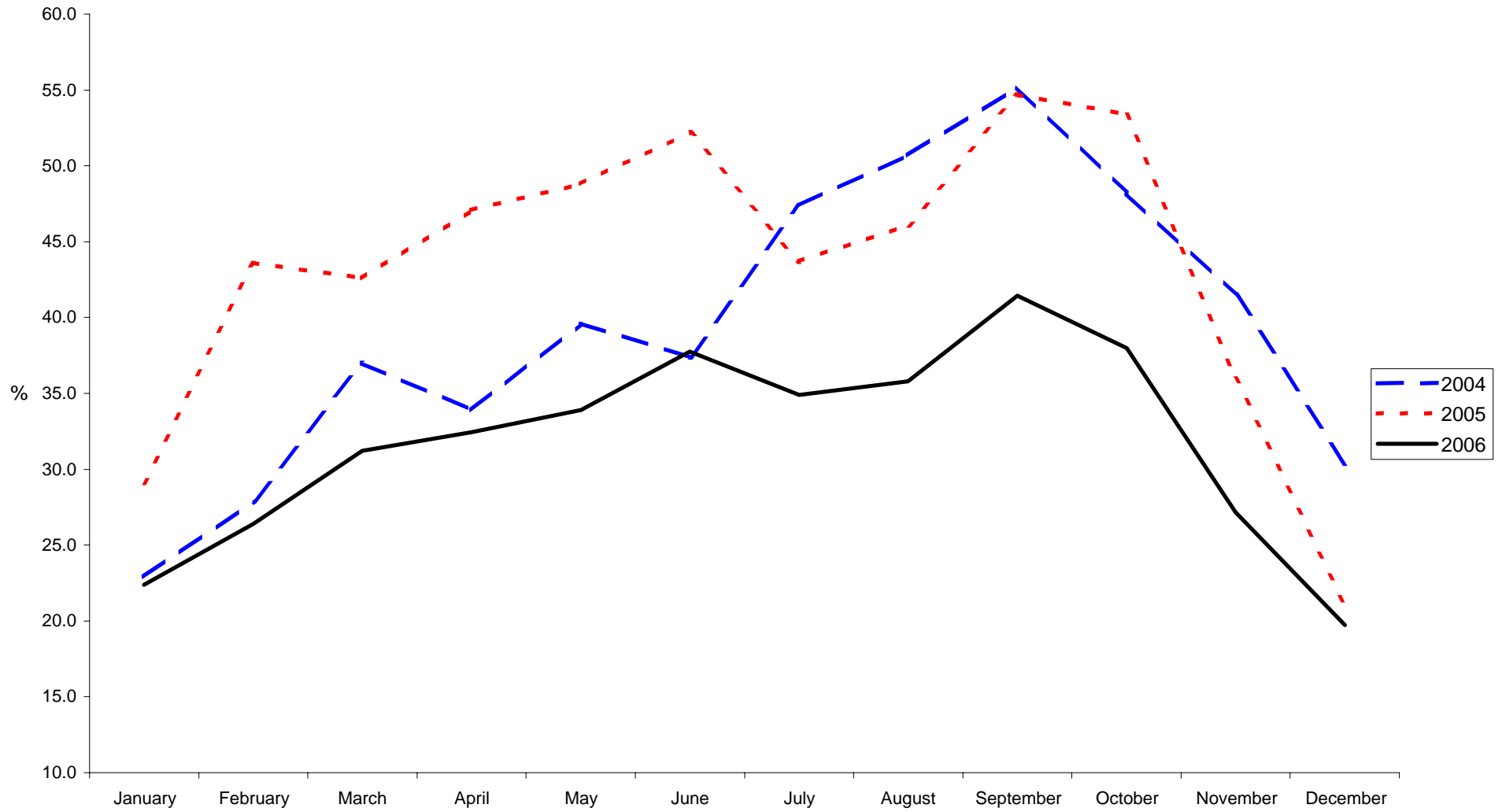


Table 7(a): Average Length of Stay Per Person (Nights), All Hotels, 1980 - 2006

<u>ALL ARRIVALS</u>													
<u>YEAR</u>	<u>JAN</u>	<u>FEB</u>	<u>MAR</u>	<u>APR</u>	<u>MAY</u>	<u>JUN</u>	<u>JUL</u>	<u>AUG</u>	<u>SEP</u>	<u>OCT</u>	<u>NOV</u>	<u>DEC</u>	<u>TOTAL</u>
1980	4.5	4.5	5.8	6.5	5.2	6.5	7.6	7.9	7.8	6.4	5.2	5.3	6.2
1981	5.1	4.9	5.2	6.0	5.7	6.4	5.5	5.9	5.8	5.8	5.5	5.1	5.6
1982	5.6	5.6	5.1	6.5	6.3	7.6	8.2	6.9	6.7	6.3	5.3	5.2	6.4
1983	5.3	5.0	6.0	5.4	5.8	8.3	6.4	7.9	7.0	7.0	5.4	5.4	6.3
1984	5.3	5.2	5.9	6.2	6.1	8.0	6.8	7.4	7.7	6.1	4.9	5.1	6.3
1985	4.3	3.9	5.1	5.5	5.1	6.7	5.3	6.0	5.8	5.2	3.7	3.6	5.1
1986	4.3	3.7	4.6	4.0	4.5	5.7	5.0	5.2	5.2	5.3	4.8	3.7	4.6
1987	4.7	4.0	4.2	3.9	4.4	4.2	4.6	5.1	4.7	4.1	4.0	3.7	4.3
1988	3.6	4.1	4.1	4.3	4.3	4.9	5.0	4.6	4.6	5.2	3.8	4.6	4.4
1989	4.4	4.2	4.2	4.3	4.0	3.7	3.0	3.3	2.6	2.4	2.2	2.2	3.2
1990	3.3	3.4	2.4	2.7	3.5	2.8	2.9	3.2	3.1	3.6	3.0	3.3	3.0
1991	3.5	3.8	4.3	3.9	4.0	5.0	4.2	4.7	4.0	3.9	4.8	3.9	4.1
1992	3.7	3.1	4.0	3.8	3.9	4.0	4.2	3.9	3.9	3.7	3.7	3.7	3.8
1993	3.7	3.8	4.1	4.1	4.1	4.3	4.1	4.4	4.1	3.8	3.6	4.3	4.0
1994	4.0	4.0	4.0	4.0	3.8	4.0	4.4	3.9	3.8	3.9	3.7	3.8	3.9
1995	3.0	3.6	3.1	3.1	3.3	3.6	3.3	3.4	3.2	3.2	2.8	2.7	3.2
1996	2.8	2.6	2.9	3.0	3.2	3.3	3.2	3.4	3.4	3.1	2.9	2.6	3.1
1997	3.1	3.0	3.1	2.9	3.0	2.9	3.2	2.9	2.9	3.5	2.6	2.7	3.0
1998	2.5	3.2	3.5	3.2	3.3	3.7	3.7	3.7	4.2	3.5	3.5	3.3	3.5
1999	3.3	3.5	3.7	3.5	3.6	3.8	3.8	3.8	3.9	3.6	3.8	3.3	3.7
2000	2.9	3.2	3.0	3.2	3.9	3.5	3.9	3.5	3.4	3.1	3.0	3.2	3.4
2001	2.7	3.4	3.3	3.4	3.4	3.5	3.3	3.4	3.6	3.5	3.5	3.1	3.3
2002	3.0	2.9	3.2	3.1	3.1	3.0	3.1	3.1	3.2	3.1	3.0	2.8	3.1
2003	2.8	2.9	3.0	3.1	3.0	3.1	3.1	3.1	3.4	3.2	2.8	2.7	3.0
2004	2.9	2.9	3.2	3.2	3.1	3.2	3.6	3.7	3.5	3.4	3.1	3.2	3.3
2005	3.0	3.4	3.1	3.3	3.2	3.6	3.3	3.3	3.5	3.8	3.5	2.9	3.3
2006	2.8	2.9	3.1	3.1	3.0	3.4	3.8	3.8	3.6	3.4	3.1	3.0	3.2

AVERAGE LENGTH OF STAY, ALL ARRIVALS, 2004 - 2006

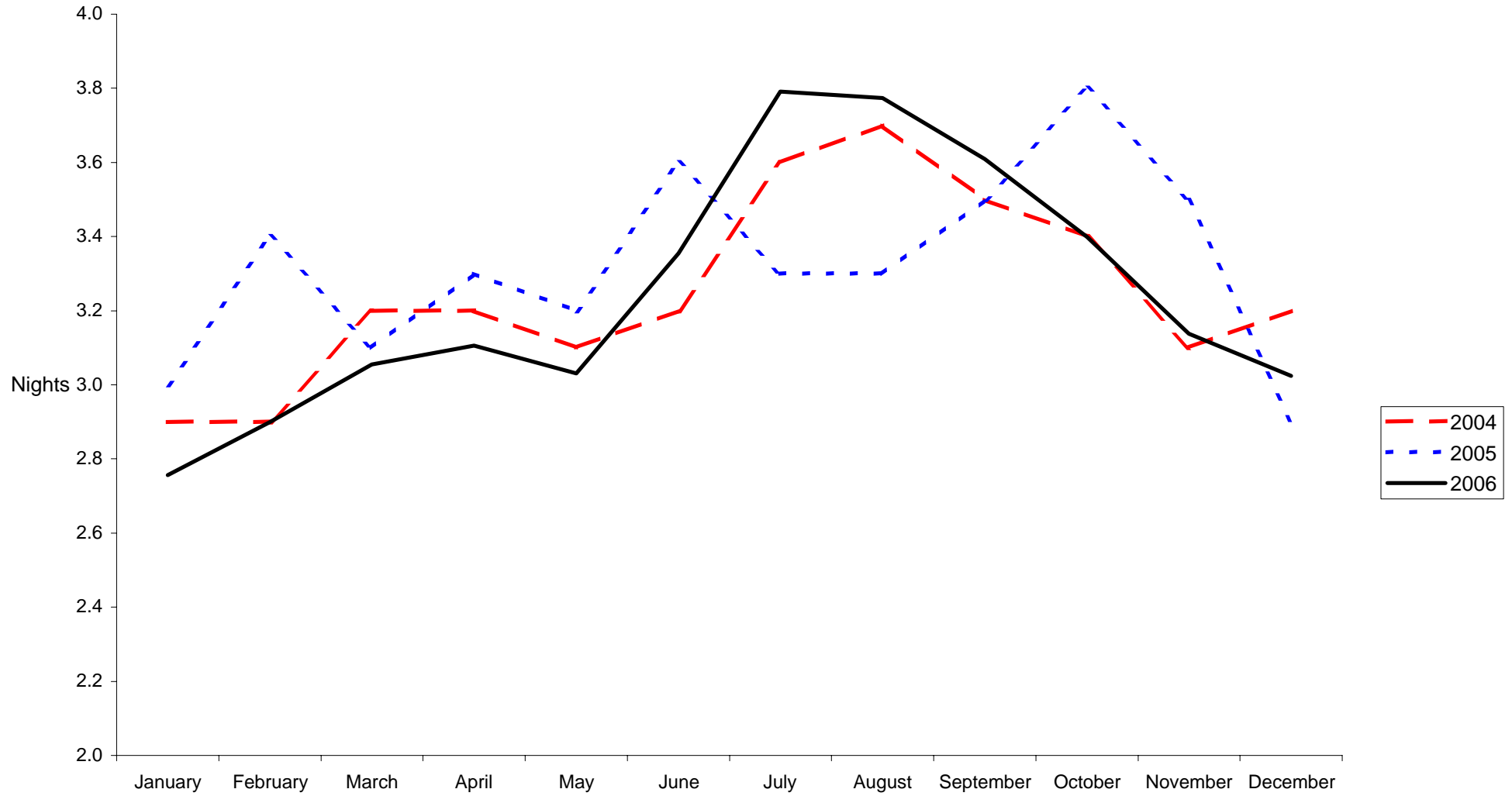


Table 7(b): Average Length of Stay Per Person (Nights), All Hotels, 1980 - 2006

TOURIST ARRIVALS

<u>YEAR</u>	<u>JAN</u>	<u>FEB</u>	<u>MAR</u>	<u>APR</u>	<u>MAY</u>	<u>JUN</u>	<u>JUL</u>	<u>AUG</u>	<u>SEP</u>	<u>OCT</u>	<u>NOV</u>	<u>DEC</u>	<u>TOTAL</u>
1980	4.3	4.3	5.5	6.0	5.4	8.0	7.7	8.2	7.5	6.7	5.5	5.6	6.3
1981	5.0	4.1	5.1	5.8	6.3	6.1	5.6	6.4	6.4	5.9	5.7	5.0	5.6
1982	6.1	5.4	5.5	7.0	6.1	8.2	8.0	8.2	10.1	6.7	5.6	5.4	6.7
1983	6.6	5.4	6.2	5.7	6.6	8.4	7.8	9.2	7.7	7.5	5.8	6.3	7.1
1984	6.4	6.3	6.6	8.0	7.8	8.8	8.4	8.7	8.5	7.1	5.7	6.6	7.5
1985	7.3	5.2	5.4	5.4	4.9	6.8	6.0	6.3	6.5	5.5	3.7	3.6	5.5
1986	4.0	4.2	4.3	3.7	4.7	5.8	5.2	5.3	4.8	4.9	4.2	4.1	4.6
1987	4.2	4.1	4.3	3.9	4.6	4.6	4.3	4.6	4.6	4.3	3.8	4.0	4.3
1988	3.9	3.9	4.0	4.3	4.1	5.1	5.2	4.6	4.4	4.9	3.9	4.3	4.4
1989	4.2	3.8	3.7	3.8	3.5	3.4	3.3	3.2	2.8	2.6	2.4	2.6	3.2
1990	4.1	4.3	4.4	4.1	4.3	4.3	3.7	3.8	3.9	4.2	3.7	4.1	4.1
1991	3.8	3.9	3.6	4.3	4.0	4.1	4.0	3.5	3.3	3.9	4.2	3.4	3.8
1992	3.3	2.9	3.3	3.2	3.1	3.6	3.6	3.4	3.6	3.2	3.2	3.0	3.3
1993	2.7	3.5	3.7	3.8	3.8	4.4	3.8	4.1	4.1	3.9	3.8	3.8	3.8
1994	4.0	3.8	3.9	4.0	4.0	4.1	4.2	3.9	4.0	3.9	4.0	3.9	4.0
1995	3.1	3.3	3.4	3.4	3.6	4.2	3.5	3.6	3.4	3.4	3.0	2.8	3.4
1996	2.7	2.8	3.2	3.2	3.8	3.6	3.3	3.3	3.5	3.1	2.9	2.6	3.2
1997	3.2	3.3	3.5	3.4	3.4	3.3	3.2	3.2	3.5	3.1	3.2	3.0	3.3
1998	2.8	3.1	3.4	3.2	3.4	3.5	3.5	3.5	3.9	3.5	3.3	3.0	3.4
1999	3.0	3.4	3.5	3.4	3.5	3.6	3.6	3.6	3.9	3.6	3.8	3.2	3.5
2000	2.6	3.0	2.9	3.1	3.5	3.1	3.5	3.3	3.3	2.7	2.8	2.7	3.1
2001	2.6	3.2	3.0	2.9	3.1	3.5	3.1	3.0	3.4	3.3	2.6	2.6	3.1
2002	2.8	2.7	3.0	3.1	3.0	3.4	3.0	3.1	3.2	3.2	2.7	2.7	3.0
2003	2.8	2.9	3.0	2.9	3.0	3.2	3.1	3.1	3.5	3.2	2.8	2.4	3.0
2004	2.5	2.6	3.0	3.0	2.8	3.0	3.8	3.8	3.7	3.7	3.3	3.4	3.2
2005	3.2	3.6	3.4	3.7	3.4	3.8	3.6	3.3	3.8	4.0	3.8	3.0	3.6
2006	3.0	3.1	2.9	3.0	2.8	3.2	3.8	3.9	3.7	3.4	3.0	3.0	3.2

AVERAGE LENGTH OF STAY, TOURIST ARRIVALS, 2004 - 2006

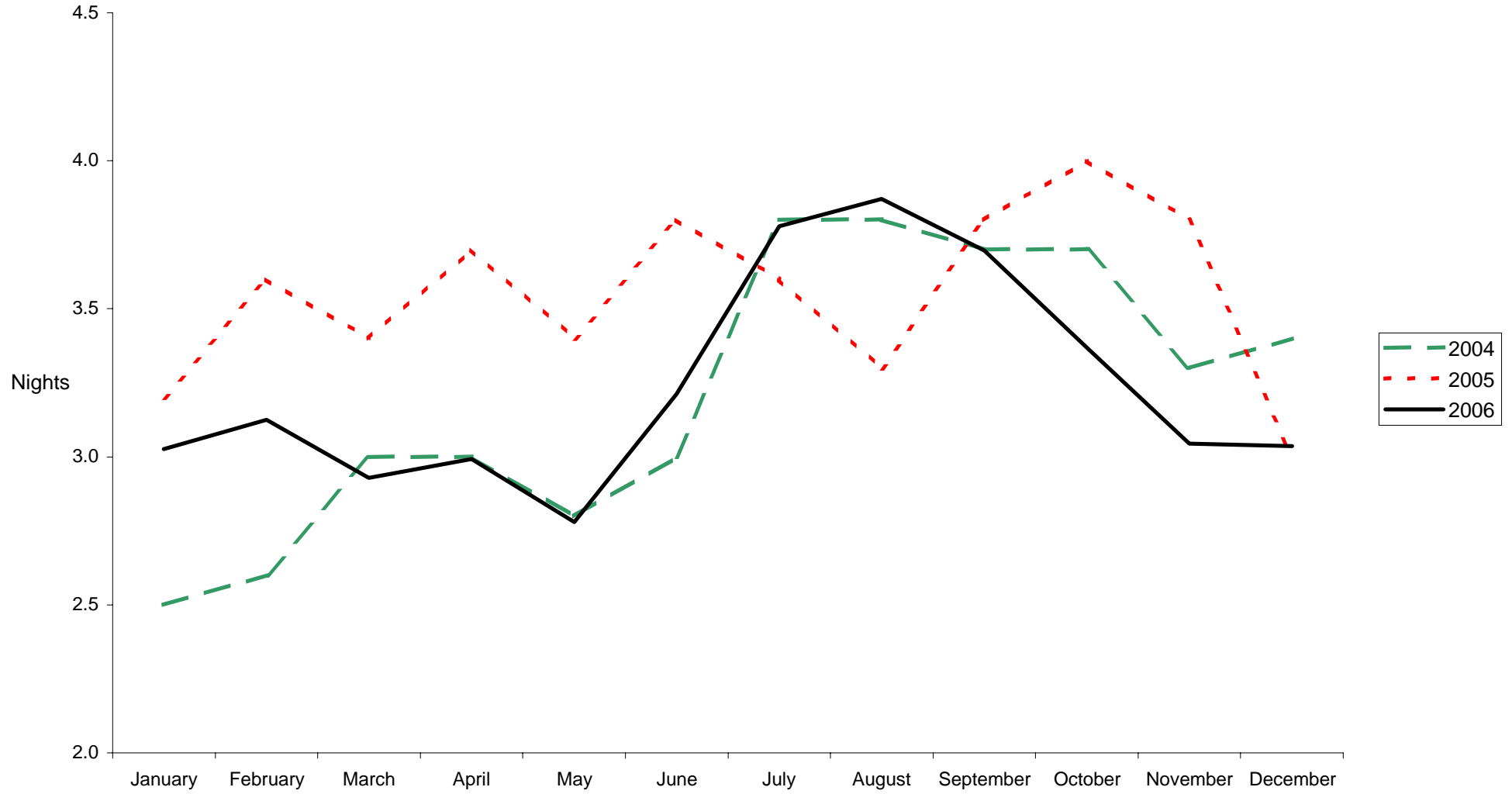


Table 8: Summary of Hotel Statistics, 1973 - 2006

<u>YEAR</u>	<u>ARRIVALS IN HOTELS</u>	<u>GUEST NIGHTS SOLD</u>	<u>% SLEEPER OCCUPANCY</u>	<u>AV. LENGTH OF STAY (NIGHTS)</u>
1973	37,012	248,238	51.2	6.7
1974	39,758	271,225	49.5	6.8
1975	45,894	307,913	53.0	6.7
1976	34,933	244,804	43.1	7.0
1977	31,401	207,593	39.4	6.6
1978	39,102	257,295	47.8	6.6
1979	44,569	296,335	53.0	6.6
1980	41,308	255,862	46.5	6.2
1981	33,417	187,679	36.2	5.6
1982	34,896	223,429	42.2	6.4
1983	33,142	209,930	38.4	6.3
1984	35,690	225,873	41.3	6.3
1985	55,119	281,525	51.0	5.1
1986	56,525	266,223	51.3	4.6
1987	64,349	279,377	52.3	4.3
1988	64,942	286,295	52.0	4.4
1989	67,934	220,083	44.0	3.2
1990	64,793	196,516	40.8	3.0
1991	43,193	178,053	35.5	4.1
1992	40,986	156,947	31.6	3.8
1993	39,123	157,215	40.2	4.0
1994	37,851	149,292	37.2	3.9
1995	45,056	144,453	39.2	3.2
1996	46,142	140,596	37.8	3.1
1997	48,420	143,972	39.0	3.0
1998	41,616	144,538	43.1	3.5
1999	42,031	153,583	43.7	3.7
2000	48,949	164,232	44.6	3.4
2001	53,776	178,951	48.9	3.3
2002	59,417	182,444	49.7	3.1
2003	61,743	187,631	51.2	3.0
2004	61,710	201,706	55.1	3.3
2005	58,796	195,827	56.2	3.3
2006	59,194	192,331	47.3	3.2