

GOVERNMENT OF GIBRALTAR

HOTEL OCCUPANCY

SURVEY

2009

STATISTICS OFFICE



GOVERNMENT OF GIBRALTAR

HOTEL OCCUPANCY SURVEY 2009

STATISTICS OFFICE

Government of Gibraltar
Statistics Office

Statistics Online

Copies of the Hotel Occupancy Survey can be obtained, free of charge from the Statistics Office and are also available electronically on the Gibraltar Government Website www.gibraltar.gov.gi.

Historic data can be downloaded from previous copies of the report available on-line.

Comments and requests for general information should be addressed to:

Statistics Office
99 Harbours Walk
The New Harbours
Gibraltar

Or

E-mail: statistics@gibraltar.gov.gi

Tel: +350 20075515/ +350 20075490

Fax: +350 20051160

PREFACE

The Statistics (Hotel Occupancy Survey) Order 1971 requires that the Government Statistician prepares a report and summary of the findings of the Hotel Occupancy Survey to be laid before the Gibraltar Parliament.

This report contains a summary of the statistics collected for the years 1983 – 2009.

I must express my thanks to the establishments for their continued co-operation in the conduct of this Survey.

GOVERNMENT STATISTICIAN

FEBRUARY 2010

- C O N T E N T S -

A. Definitions and Notes

<u>TABLES</u>	<u>DESCRIPTION</u>	<u>PAGE</u>
1	General Analysis, 1983 - 2009	1
Chart	All Arrivals at Hotels, 1983 - 2009	2
Chart	% Room Occupancy, All Arrivals, 1990 - 2009	
Chart	% Sleeper Occupancy, All Arrivals, 1983 - 2009	3
Chart	Average Length of Stay, All Arrivals, 1983 - 2009	
2(a)	Room Nights Sold and Offered, 2003 - 2007 (All Arrivals)	4
2(b)	Room Nights Sold and Offered, 2008 - 2009 (All Arrivals)	5
Chart	Room Nights Sold, All Arrivals, 2008 - 2009	
2(c)	Room Nights Sold and Offered, 2003 - 2007 (Tourist Arrivals)	6
2(d)	Room Nights Sold and Offered, 2008 - 2009 (Tourist Arrivals)	7
Chart	Room Nights Sold, Tourist Arrivals, 2008 - 2009	
3(a)	% Room Occupancy Rates, 1999 - 2003	8
3(b)	% Room Occupancy Rates, All Arrivals, 2004 - 2009	9
Chart	% Room Occupancy Rates, All Arrivals, 2008 - 2009	
3(c)	% Room Occupancy Rates, Tourist Arrivals, 2004 - 2009	10
Chart	% Room Occupancy Rates, Tourist Arrivals, 2008 - 2009	
4(a)	Number of Arrivals by Month, 1983 - 1989	11
4(b)	Number of Arrivals by Month, 1990 - 1996	12
4(c)	Number of Arrivals by Month, 1997 - 2003	13
4(d)	Number of Arrivals by Month, 2004 - 2009 (All Arrivals)	14
Chart	All Arrivals at Hotels, 2008 - 2009	
4(e)	Number of Arrivals by Month, 2004 - 2009 (Tourist Arrivals)	15
Chart	Tourist Arrivals at Hotels, 2008 - 2009	
5(a)	Guest Nights Sold/Offered, % Sleeper Occupancy, 1983 - 1986 (All Arrivals)	16
5(b)	Guest Nights Sold/Offered, % Sleeper Occupancy, 1987 - 1990 (All Arrivals)	
5(c)	Guest Nights Sold/Offered, % Sleeper Occupancy, 1991 - 1994 (All Arrivals)	17
5(d)	Guest Nights Sold/Offered, % Sleeper Occupancy, 1995 - 1998 (All Arrivals)	
5(e)	Guest Nights Sold/Offered, % Sleeper Occupancy, 1999 - 2002 (All Arrivals)	18
5(f)	Guest Nights Sold/Offered, % Sleeper Occupancy, 2003 - 2006 (All Arrivals)	

- C O N T E N T S -

<u>TABLES</u>	<u>DESCRIPTION</u>	<u>PAGE</u>
5(g)	Guest Nights Sold, 2007 - 2009 (All Arrivals)	19
Chart 5(h)	Guest Nights Sold, All Arrivals, 2007 - 2009 Guest Nights Offered, 2007 - 2009 (All Arrivals)	20
Chart 5(i)	Guest Nights Offered, All Arrivals, 2007 - 2009 % Sleeper Occupancy, 2007 - 2009 (All Arrivals)	21
Chart 6(a)	% Sleeper Occupancy, All Arrivals, 2007 - 2009 Guest Nights Sold/Offered, % Sleeper Occupancy, 1983 - 1986 (Tourist Arrivals)	22
6(b)	Guest Nights Sold/Offered, % Sleeper Occupancy, 1987 - 1990 (Tourist Arrivals)	
6(c)	Guest Nights Sold/Offered, % Sleeper Occupancy, 1991 - 1994 (Tourist Arrivals)	23
6(d)	Guest Nights Sold/Offered, % Sleeper Occupancy, 1995 - 1998 (Tourist Arrivals)	
6(e)	Guest Nights Sold/Offered, % Sleeper Occupancy, 1999 - 2002 (Tourist Arrivals)	24
6(f)	Guest Nights Sold/Offered, % Sleeper Occupancy, 2003 - 2006 (Tourist Arrivals)	
6(g)	Guest Nights Sold, 2007 - 2009 (Tourist Arrivals)	25
Chart 6(h)	Guest Nights Sold, Tourist Arrivals, 2007 - 2009 Guest Nights Offered, 2007 - 2009 (Tourist Arrivals)	26
Chart 6(i)	Guest Nights Offered, Tourist Arrivals, 2007 - 2009 % Sleeper Occupancy, 2007 - 2009 (Tourist Arrivals)	27
Chart 7(a)	% Sleeper Occupancy, Tourist Arrivals, 2007 - 2009 Average Length of Stay Per Person (Nights), 1998 - 2009 (All Arrivals)	28
Chart 7(b)	Average Length of Stay, All Arrivals, 2007 - 2009 Average Length of Stay Per Person (Nights), 1998 - 2009 (Tourist Arrivals)	29
Chart Table 8	Average Length of Stay, Tourist Arrivals, 2007 - 2009 Summary of Hotel Statistics, 1983 - 2009	30
Chart	All Arrivals at Hotels, 1983 - 2009	

A. DEFINITIONS AND NOTES

- (a) Tourist: A tourist is a person who is primarily in Gibraltar for the purpose of a holiday. It is nevertheless up to the discretion of the individual hotels who to include under this category.
- (b) Guest Nights: Calculated on the basis of “one guest x one night”.
- (c) Room Nights: Calculated on the basis of “one room x one night”.
- (d) Sleeper Occupancy: Calculated as the percentage of guest nights sold over guest nights offered. It should be noted that this measure does not necessarily give an accurate indication of the ability of the hotel to accept more guests. e.g. one person staying in a room with two beds gives a 50% sleeper occupancy and a 100% room occupancy.
- (e) Room Occupancy: Calculated as the percentage of room nights sold over room nights offered.
- (f) Abbreviations:
 - GNS - Guest Nights Sold.
 - GNO - Guest Nights Offered.
 - RNS - Room Nights Sold.
 - RNO - Room Nights Offered.
- (g) In interpreting the figures it should be noted that:
 - (i) The Continental Hotel is included for the period January 1986 to July 2008.
 - (ii) The Sunrise Motel is included for the period January 1992 to December 1994.
 - (iii) As from September 1992, the Montarik Hotel is not included.
 - (iv) As from November 1992, the Gibraltar Beach Hotel is not included.
 - (v) The Cannon Hotel is included with effect from July 1995.
 - (vi) The Emile Youth Hostel, Governor’s Inn Apartments and Herald Travel Apartments are included with effect from January 2006.
 - (vii) The Sunrise Motel is included with effect from January 2007.
- (h) The survey is based on the figures provided by the Caleta Hotel, O’Callaghan Elliott Hotel, Rock Hotel, Bristol Hotel, Queens Hotel, Cannon Hotel, The Emile Youth Hostel, Governor’s Inn Apartments, Herald Travel Apartments and the Sunrise Motel.

Table 1: General Analysis, 1983 - 2009

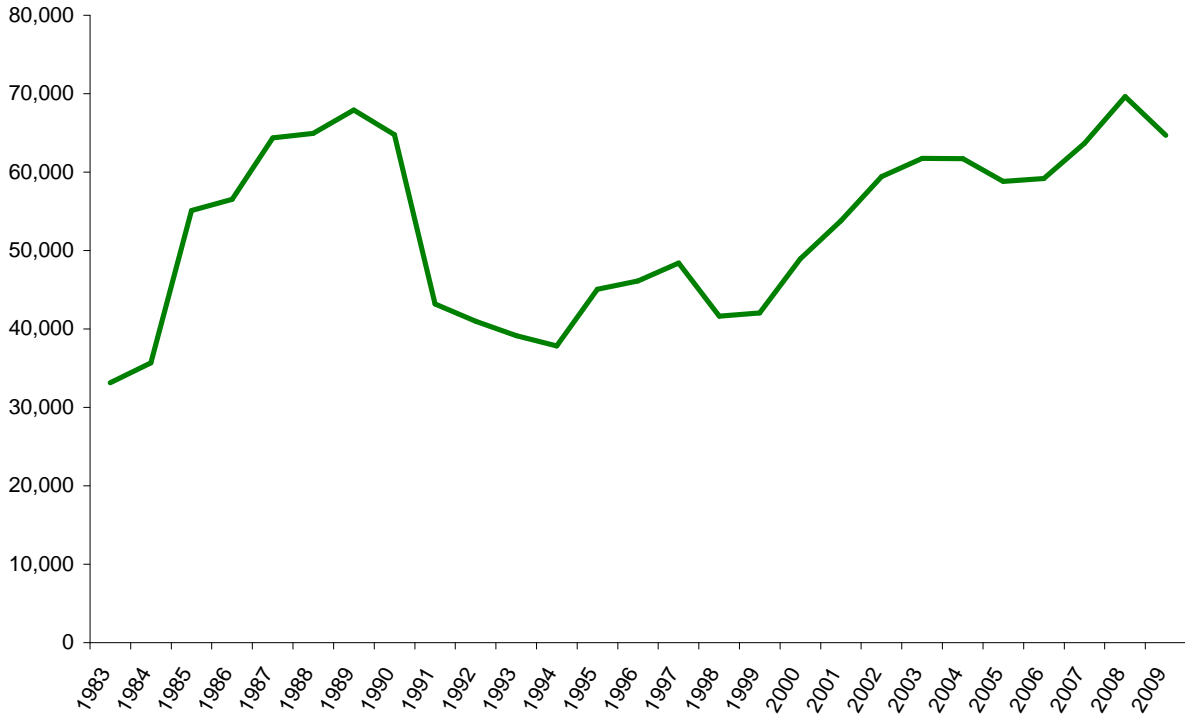
ALL VISITORS

<u>YEAR</u>	<u>TOTAL ARRIVALS</u>	<u>(000's)</u>		<u>% ROOM OCCUPANCY</u>	<u>(000's)</u>		<u>% SLEEPER OCCUPANCY</u>	<u>AVERAGE LENGTH OF STAY</u>
		<u>RNO</u>	<u>RNS</u>		<u>GNO</u>	<u>GNS</u>		
1983	33,142	n/a	n/a	n/a	546	210	38.4	6.3
1984	35,690	n/a	n/a	n/a	546	226	41.3	6.3
1985	55,119	n/a	n/a	n/a	552	282	51.0	5.1
1986	56,525	n/a	n/a	n/a	519	266	51.3	4.6
1987	64,349	n/a	n/a	n/a	535	278	52.3	4.3
1988	64,942	n/a	n/a	61.3	551	286	52.0	4.4
1989	67,934	n/a	n/a	53.3	501	220	44.0	3.2
1990	64,793	n/a	n/a	51.3	481	197	40.8	3.0
1991	43,193	n/a	n/a	50.6	502	178	35.5	4.1
1992	40,986	237	98	41.2	497	157	31.6	3.8
1993	39,123	195	94	48.4	391	157	40.2	4.0
1994	37,851	199	89	44.5	401	149	37.2	3.9
1995	45,056	192	88	46.1	369	144	39.2	3.2
1996	46,142	191	83	43.3	372	141	37.8	3.1
1997	48,420	190	90	47.3	370	144	39.0	3.0
1998	41,616	173	93	53.6	335	145	43.1	3.5
1999	42,031	179	99	55.3	351	154	43.7	3.7
2000	48,949	179	105	58.9	368	164	44.6	3.4
2001	53,776	179	115	64.2	366	179	48.9	3.3
2002	59,417	183	118	64.4	367	182	49.7	3.1
2003	61,743	186	119	64.2	367	188	51.2	3.0
2004	61,710	186	126	68.2	366	202	55.1	3.3
2005	58,796	177	122	68.6	349	196	56.2	3.3
2006	59,194	200	119	59.2	406	192	47.3	3.2
2007	63,691	220	127	57.8	434	200	45.9	3.1
2008	69,630	219	133	60.6	425	207	48.7	3.0
2009	64,691	214	123	57.4	416	192	46.2	3.0

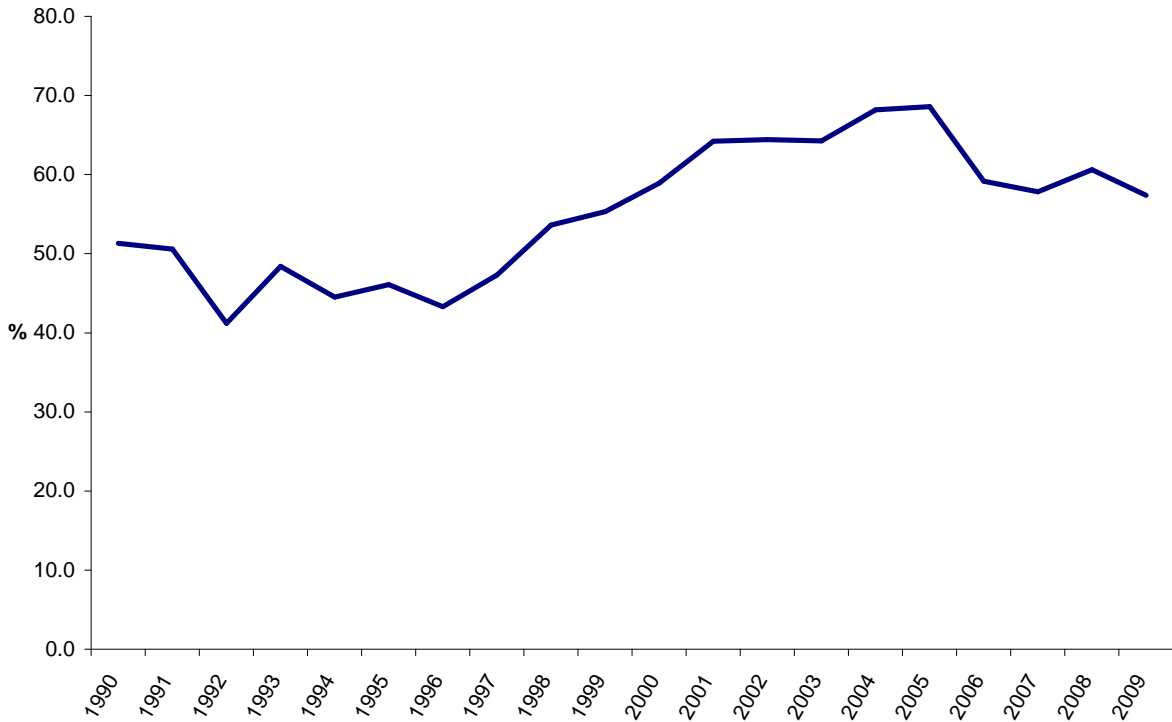
Notes:

1. RNO - Room Nights Offered.
2. RNS - Room Nights Sold.
3. GNO - Guest Nights Offered.
4. GNS - Guest Nights Sold.
5. With effect from January 1992, hotels were required under the legislation to submit returns which included the % room occupancy figures. For the period 1988 to 1991, these figures were provided voluntarily by the hotels.

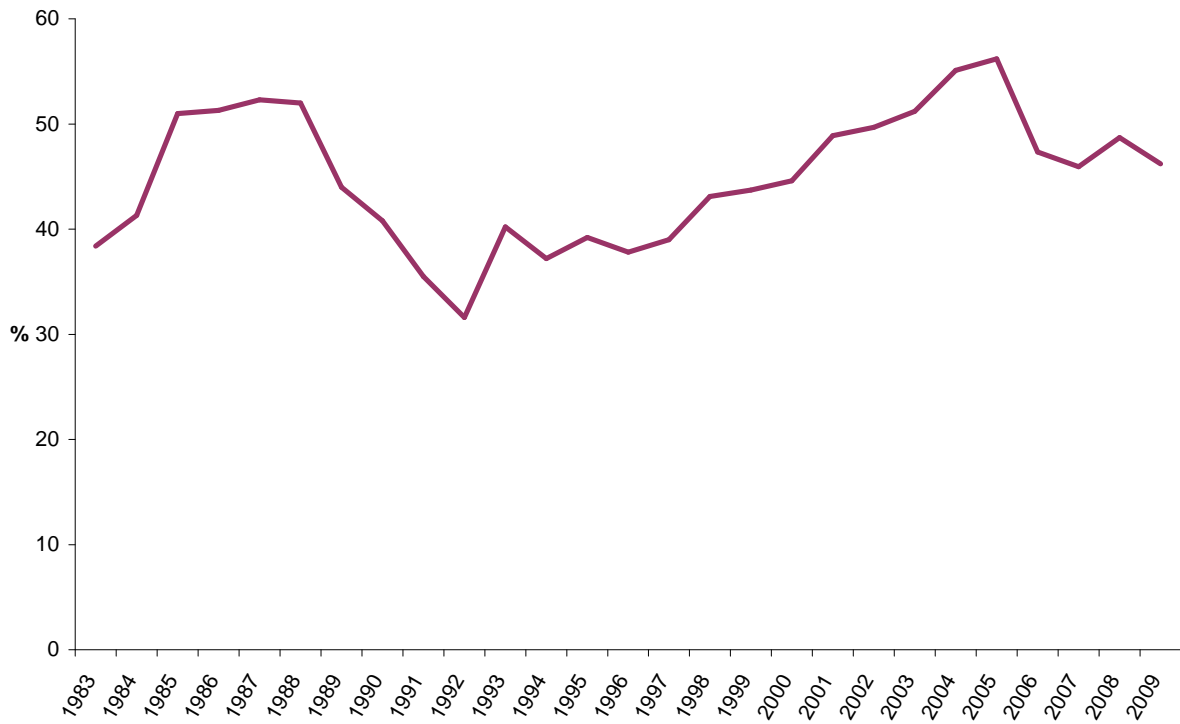
ALL ARRIVALS AT HOTELS, 1983 - 2009



% ROOM OCCUPANCY, ALL ARRIVALS, 1990 - 2009



% SLEEPER OCCUPANCY, ALL ARRIVALS, 1983 - 2009



AVERAGE LENGTH OF STAY, ALL ARRIVALS, 1983 - 2009

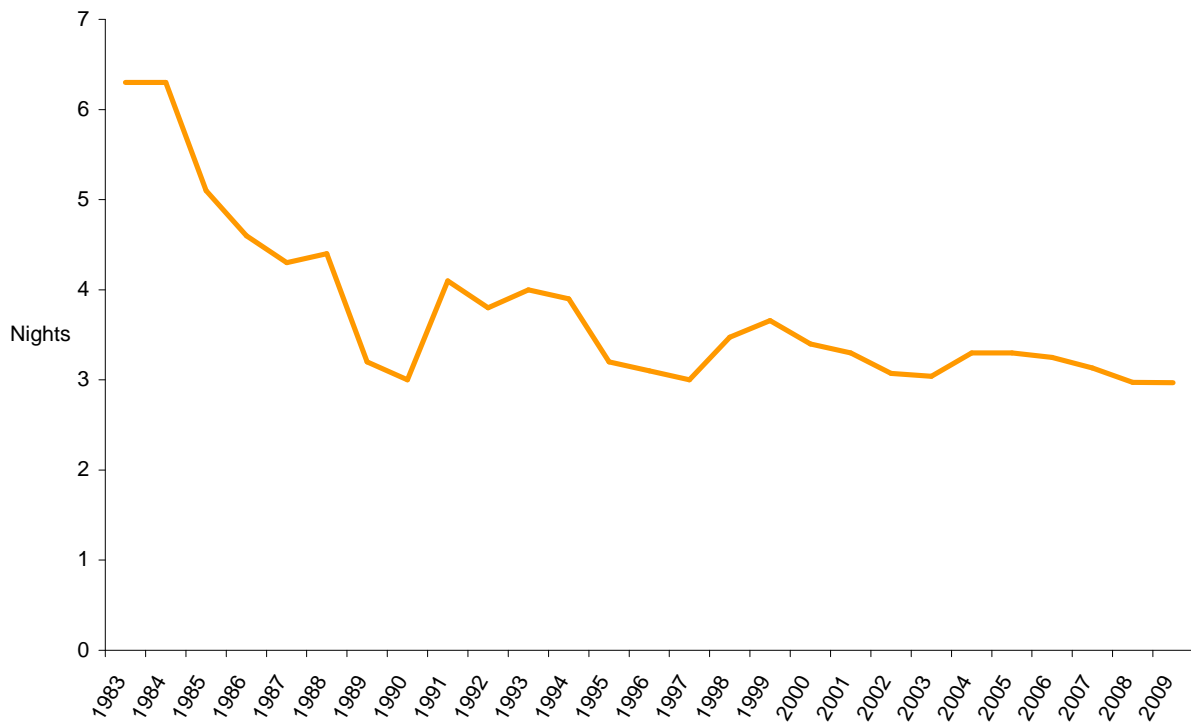


Table 2(a): Room Nights Sold and Offered, 2003 - 2007

ALL ARRIVALS

ROOM NIGHTS SOLD

(000's)

<u>MONTH</u>	<u>2003</u>	<u>2004</u>	<u>2005</u>	<u>2006</u>	<u>2007</u>
JANUARY	7.4	7.2	8.4	7.6	8.2
FEBRUARY	8.4	8.5	10.7	8.2	9.3
MARCH	10.5	11.3	9.9	11.0	9.7
APRIL	10.2	9.4	10.7	10.0	10.8
MAY	10.8	11.0	11.3	10.6	11.3
JUNE	11.7	11.6	10.7	11.3	11.8
JULY	10.4	11.6	10.1	10.9	10.7
AUGUST	10.0	11.9	10.3	9.7	12.1
SEPTEMBER	12.1	13.4	11.4	11.7	13.1
OCTOBER	11.2	11.7	12.1	11.4	13.1
NOVEMBER	9.7	10.6	9.0	8.9	10.2
DECEMBER	6.8	8.3	7.0	7.3	7.3
TOTAL	119.2	126.4	121.6	118.6	127.4

ROOM NIGHTS OFFERED

(000's)

<u>MONTH</u>	<u>2003</u>	<u>2004</u>	<u>2005</u>	<u>2006</u>	<u>2007</u>
JANUARY	15.8	14.7	15.6	16.9	18.9
FEBRUARY	14.2	14.6	13.5	15.4	17.1
MARCH	15.8	15.8	14.9	16.9	18.9
APRIL	15.3	15.3	14.6	16.5	18.1
MAY	15.8	15.8	15.3	16.9	18.5
JUNE	15.3	15.3	14.3	16.4	17.8
JULY	15.8	15.9	14.8	17.1	18.4
AUGUST	15.7	15.9	14.7	17.1	18.4
SEPTEMBER	15.2	15.3	14.2	16.6	18.2
OCTOBER	15.7	15.8	14.7	17.1	18.8
NOVEMBER	15.2	15.3	14.6	16.5	18.3
DECEMBER	15.7	15.8	16.1	17.0	18.8
TOTAL	185.5	185.5	177.2	200.4	220.2

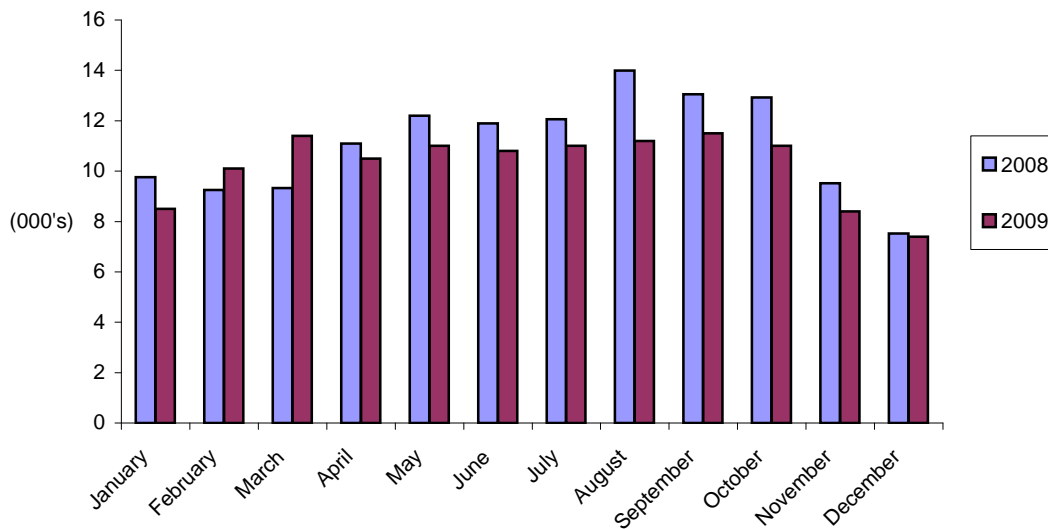
Note: Yearly totals have been rounded off and need not necessarily equal the sum of the rounded-off monthly figures.

Table 2(b): Room Nights Sold and Offered, 2008 - 2009

ALL ARRIVALS

<u>MONTH</u>	<u>ROOM NIGHTS SOLD</u>		<u>ROOM NIGHTS OFFERED</u>	
	<u>(000's)</u>		<u>(000's)</u>	
	<u>2008</u>	<u>2009</u>	<u>2008</u>	<u>2009</u>
JANUARY	9.8	8.5	18.7	18.0
FEBRUARY	9.3	10.1	17.5	16.3
MARCH	9.3	11.4	18.8	18.3
APRIL	11.1	10.5	18.1	17.6
MAY	12.2	11.0	18.7	18.3
JUNE	11.9	10.8	18.2	17.7
JULY	12.1	11.0	18.7	18.2
AUGUST	14.0	11.2	18.3	18.2
SEPTEMBER	13.1	11.5	17.8	17.5
OCTOBER	12.9	11.0	18.3	18.3
NOVEMBER	9.5	8.4	17.7	17.6
DECEMBER	7.5	7.4	17.9	18.3
TOTAL	132.6	122.9	218.7	214.2

ROOM NIGHTS SOLD, ALL ARRIVALS 2008 - 2009



Note: Yearly totals have been rounded off and need not necessarily equal the sum of the rounded-off monthly figures.

Table 2(c): Room Nights Sold and Offered, 2003 - 2007

TOURIST ARRIVALS

ROOM NIGHTS SOLD

(000's)

<u>MONTH</u>	<u>2003</u>	<u>2004</u>	<u>2005</u>	<u>2006</u>	<u>2007</u>
JANUARY	4.3	4.2	5.1	4.2	4.5
FEBRUARY	4.5	5.3	6.7	4.6	4.2
MARCH	6.5	6.9	6.3	6.1	5.8
APRIL	5.8	6.1	7.1	6.1	6.2
MAY	6.4	7.3	7.8	7.0	6.0
JUNE	7.0	7.0	7.8	7.9	6.3
JULY	6.4	7.4	6.3	6.7	6.3
AUGUST	6.7	7.7	6.8	6.9	7.1
SEPTEMBER	8.2	9.2	7.5	8.3	7.3
OCTOBER	7.4	8.0	8.1	8.4	7.7
NOVEMBER	6.1	6.8	5.3	6.1	5.3
DECEMBER	3.9	5.3	4.0	4.2	4.0
TOTAL	73.1	81.2	78.7	76.5	70.6

ROOM NIGHTS OFFERED

(000's)

<u>MONTH</u>	<u>2003</u>	<u>2004</u>	<u>2005</u>	<u>2006</u>	<u>2007</u>
JANUARY	15.8	14.7	15.6	16.9	18.9
FEBRUARY	14.2	14.6	13.5	15.4	17.1
MARCH	15.8	15.8	14.9	16.9	18.9
APRIL	15.3	15.3	14.6	16.5	18.1
MAY	15.8	15.8	15.3	16.9	18.5
JUNE	15.3	15.3	14.3	16.4	17.8
JULY	15.8	15.9	14.8	17.1	18.4
AUGUST	15.7	15.9	14.7	17.1	18.4
SEPTEMBER	15.2	15.3	14.2	16.6	18.2
OCTOBER	15.7	15.8	14.7	17.1	18.8
NOVEMBER	15.2	15.3	14.6	16.5	18.3
DECEMBER	15.7	15.8	16.1	17.0	18.8
TOTAL	185.5	185.5	177.2	200.4	220.2

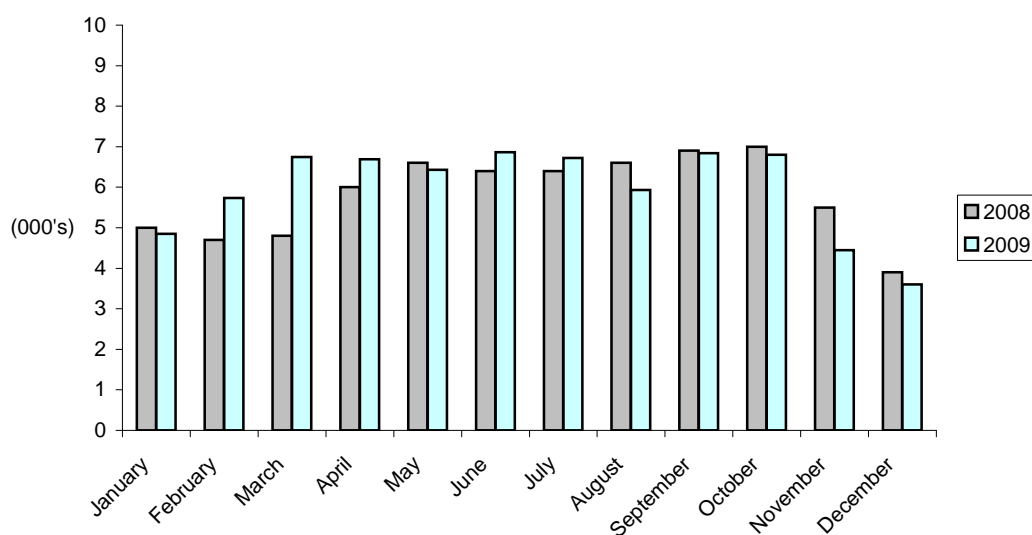
Note: Yearly totals have been rounded off and need not necessarily equal the sum of the rounded-off monthly figures.

Table 2(d): Room Nights Sold and Offered, 2008 - 2009

TOURIST ARRIVALS

<u>MONTH</u>	<u>ROOM NIGHTS SOLD</u>		<u>ROOM NIGHTS OFFERED</u>	
	<u>(000's)</u>		<u>(000's)</u>	
	<u>2008</u>	<u>2009</u>	<u>2008</u>	<u>2009</u>
JANUARY	5.0	4.8	18.7	18.0
FEBRUARY	4.7	5.7	17.5	16.3
MARCH	4.8	6.7	18.8	18.3
APRIL	6.0	6.7	18.1	17.6
MAY	6.6	6.4	18.7	18.3
JUNE	6.4	6.9	18.2	17.7
JULY	6.4	6.7	18.7	18.2
AUGUST	6.6	5.9	18.3	18.2
SEPTEMBER	6.9	6.8	17.8	17.5
OCTOBER	7.0	6.8	18.3	18.3
NOVEMBER	5.5	4.4	17.7	17.6
DECEMBER	3.9	3.6	17.9	18.3
TOTAL	69.8	71.7	218.7	214.2

ROOM NIGHTS SOLD, TOURIST ARRIVALS, 2008 - 2009



Note: Yearly totals have been rounded off and need not necessarily equal the sum of the rounded-off monthly figures.

Table 3(a): % Room Occupancy Rates, 1999 - 2003

ALL ARRIVALS

%

<u>MONTH</u>	<u>1999</u>	<u>2000</u>	<u>2001</u>	<u>2002</u>	<u>2003</u>
JANUARY	38.7	30.6	44.4	42.3	46.7
FEBRUARY	43.9	41.6	55.1	56.6	58.7
MARCH	58.4	51.7	67.3	62.4	66.8
APRIL	56.5	58.6	66.0	61.1	66.4
MAY	54.5	82.2	71.6	67.6	68.4
JUNE	59.7	72.2	75.3	72.0	76.6
JULY	54.6	63.6	67.0	71.4	66.3
AUGUST	65.4	61.9	66.0	67.0	63.9
SEPTEMBER	69.9	80.5	80.7	84.0	79.1
OCTOBER	64.9	64.8	73.3	72.9	71.1
NOVEMBER	62.0	52.9	58.8	66.9	64.1
DECEMBER	35.1	45.0	44.8	47.9	43.1
TOTAL	55.3	58.9	64.2	64.4	64.2

TOURIST ARRIVALS

%

<u>MONTH</u>	<u>1999</u>	<u>2000</u>	<u>2001</u>	<u>2002</u>	<u>2003</u>
JANUARY	21.9	19.6	26.1	25.4	27.2
FEBRUARY	26.9	24.8	33.7	35.1	31.3
MARCH	34.0	33.1	39.4	43.3	40.9
APRIL	32.9	38.3	35.8	41.2	37.9
MAY	34.4	50.9	42.6	45.5	40.5
JUNE	37.1	44.4	48.2	40.8	45.5
JULY	32.6	39.6	44.5	47.1	40.9
AUGUST	40.2	42.9	44.7	44.8	42.5
SEPTEMBER	43.9	54.2	55.2	56.8	53.6
OCTOBER	41.6	43.4	48.9	44.9	47.1
NOVEMBER	35.0	33.7	37.2	36.6	40.3
DECEMBER	22.4	26.8	27.3	28.8	25.1
TOTAL	33.6	37.7	40.3	40.9	39.4

Table 3(b): % Room Occupancy Rates, 2004 - 2009

ALL ARRIVALS

%

<u>MONTH</u>	<u>2004</u>	<u>2005</u>	<u>2006</u>	<u>2007</u>	<u>2008</u>	<u>2009</u>
JANUARY	48.9	54.3	45.1	43.3	52.3	47.3
FEBRUARY	58.6	79.2	53.0	54.4	52.9	62.1
MARCH	71.3	66.2	65.1	51.3	49.7	62.3
APRIL	61.3	73.2	60.3	59.4	61.2	59.8
MAY	69.8	73.6	62.6	61.0	65.1	60.5
JUNE	75.9	75.3	68.6	66.2	65.4	61.1
JULY	73.0	68.3	64.0	58.1	64.4	60.5
AUGUST	75.0	70.0	56.7	65.8	76.2	61.8
SEPTEMBER	87.4	80.0	70.8	71.9	73.5	65.6
OCTOBER	73.9	82.2	66.7	69.3	70.7	60.0
NOVEMBER	69.2	62.0	54.0	55.4	53.9	47.8
DECEMBER	52.2	43.7	42.9	38.8	41.9	40.3
TOTAL	68.2	68.6	59.2	57.8	60.6	57.4

% ROOM OCCUPANCY RATES, ALL ARRIVALS, 2008 - 2009

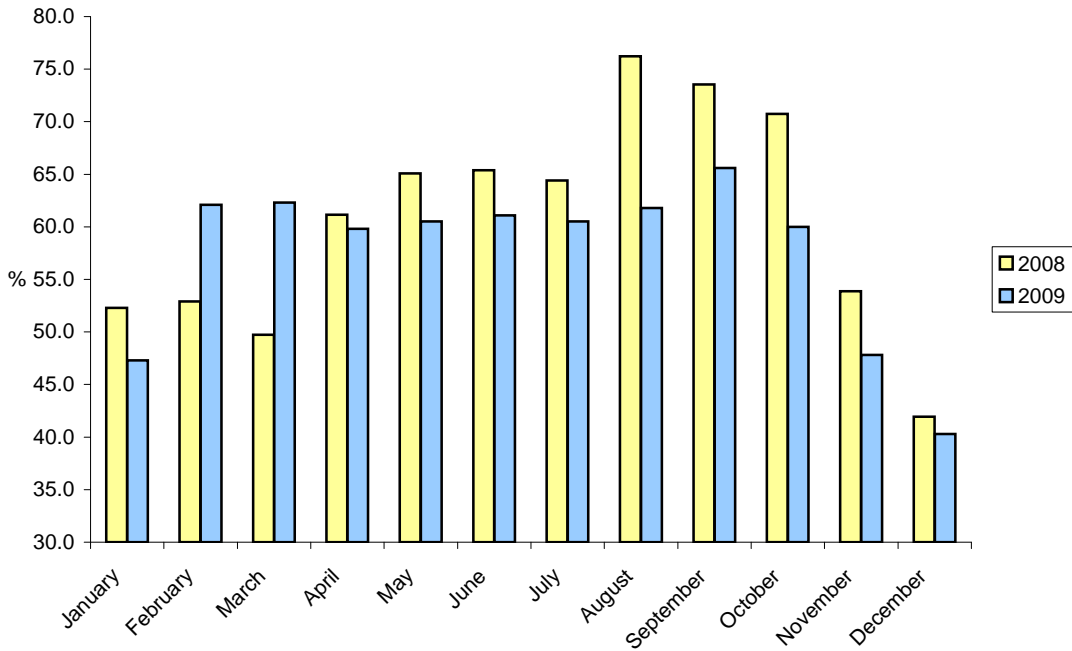


Table 3(c): % Room Occupancy Rates, 2004 - 2009

TOURIST ARRIVALS

%

<u>MONTH</u>	<u>2004</u>	<u>2005</u>	<u>2006</u>	<u>2007</u>	<u>2008</u>	<u>2009</u>
JANUARY	28.6	32.5	24.7	23.9	26.6	27.0
FEBRUARY	36.5	49.5	29.9	24.8	26.7	35.2
MARCH	43.8	42.2	35.8	30.8	25.7	36.9
APRIL	39.8	48.9	36.9	34.0	33.3	37.9
MAY	46.1	50.7	41.7	32.2	35.2	35.2
JUNE	45.5	54.6	47.8	35.4	35.4	38.9
JULY	46.9	42.5	39.4	34.4	33.9	37.0
AUGUST	48.8	46.1	40.5	38.3	35.8	32.6
SEPTEMBER	59.8	53.0	50.3	40.0	38.8	39.0
OCTOBER	50.6	55.0	48.8	40.7	38.3	37.2
NOVEMBER	44.2	36.5	36.8	29.1	30.9	25.2
DECEMBER	33.2	24.8	24.9	21.3	22.0	19.7
TOTAL	43.7	44.4	38.2	32.1	31.9	33.5

% ROOM OCCUPANCY RATES, TOURIST ARRIVALS, 2008 - 2009

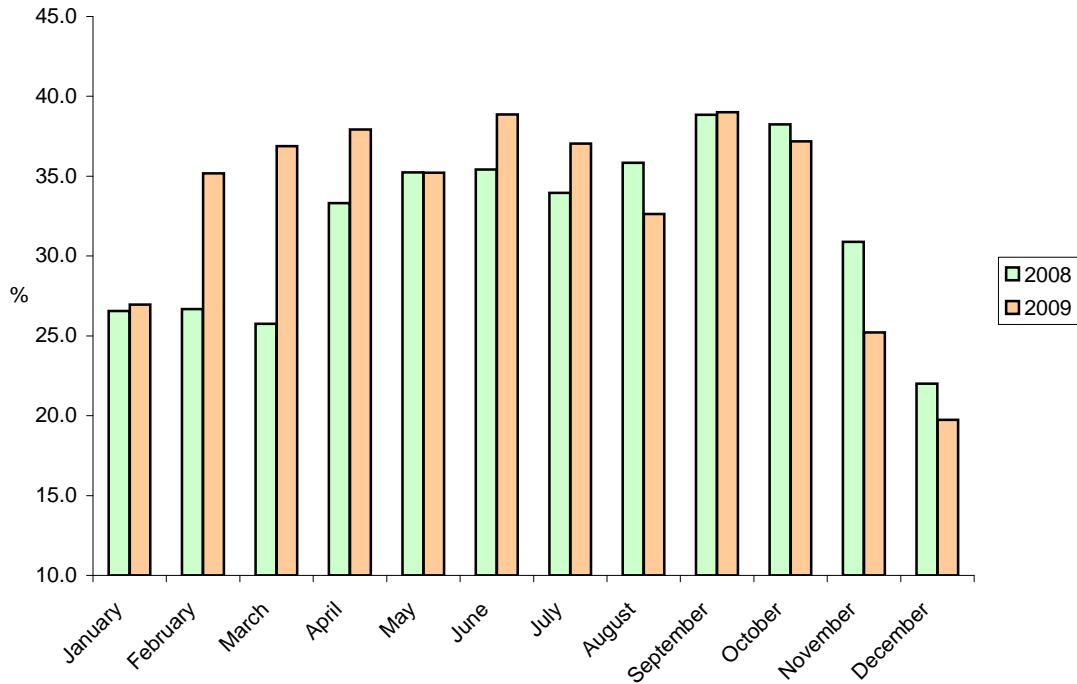


Table 4(a): Number of Arrivals by Month, 1983 - 1989

ALL ARRIVALS

(000's)

<u>MONTH</u>	<u>1983</u>	<u>1984</u>	<u>1985</u>	<u>1986</u>	<u>1987</u>	<u>1988</u>	<u>1989</u>
JANUARY	1.6	1.8	2.6	3.1	4.1	4.6	3.4
FEBRUARY	2.3	2.5	4.5	4.0	4.6	4.7	4.3
MARCH	2.6	2.6	4.9	4.6	6.3	6.3	5.2
APRIL	3.0	2.9	4.6	4.4	6.2	6.1	5.3
MAY	3.4	3.8	4.6	5.7	5.8	6.0	4.6
JUNE	2.7	2.8	4.6	5.1	5.1	5.8	5.0
JULY	3.1	3.3	5.2	4.5	4.4	5.4	6.6
AUGUST	3.2	3.4	5.4	5.2	5.1	5.3	5.9
SEPTEMBER	3.6	3.5	5.4	5.5	6.2	5.8	7.4
OCTOBER	3.0	4.0	5.1	5.0	5.3	4.9	7.7
NOVEMBER	2.5	3.0	4.6	4.9	6.0	5.8	6.7
DECEMBER	2.1	2.1	3.6	4.6	5.2	4.2	5.8
TOTAL	33.1	35.7	55.1	56.6	64.3	64.9	67.9

TOURIST ARRIVALS

(000's)

<u>MONTH</u>	<u>1983</u>	<u>1984</u>	<u>1985</u>	<u>1986</u>	<u>1987</u>	<u>1988</u>	<u>1989</u>
JANUARY	1.1	1.1	1.0	2.4	3.7	3.2	2.4
FEBRUARY	1.6	1.3	2.7	2.9	3.5	3.6	3.5
MARCH	1.8	1.7	3.6	3.8	5.0	4.7	4.1
APRIL	1.9	1.6	3.3	3.6	5.0	4.8	4.1
MAY	2.1	2.0	3.7	4.0	3.8	4.6	3.6
JUNE	2.0	2.1	3.5	3.9	3.5	4.0	4.2
JULY	2.0	2.1	3.8	3.4	3.6	3.6	3.9
AUGUST	2.1	2.3	4.3	4.0	4.1	3.6	4.1
SEPTEMBER	2.5	2.6	4.1	4.4	4.8	3.8	4.4
OCTOBER	1.9	2.7	3.5	4.2	4.8	3.6	5.3
NOVEMBER	1.6	2.0	3.5	4.3	4.8	3.6	4.4
DECEMBER	1.4	1.2	2.4	2.9	3.4	2.6	3.5
TOTAL	22.0	22.7	39.4	43.8	50.0	45.7	47.5

Note: Yearly totals have been rounded off and need not necessarily equal the sum of the rounded-off monthly figures.

Table 4(b): Number of Arrivals by Month, 1990 - 1996

ALL ARRIVALS

(000's)

<u>MONTH</u>	<u>1990</u>	<u>1991</u>	<u>1992</u>	<u>1993</u>	<u>1994</u>	<u>1995</u>	<u>1996</u>
JANUARY	3.4	3.4	2.3	1.9	2.5	2.0	2.8
FEBRUARY	4.1	3.4	3.0	2.4	2.4	2.8	3.4
MARCH	7.9	3.9	3.4	2.9	3.1	3.4	4.0
APRIL	8.4	3.6	3.6	3.0	3.1	4.0	4.1
MAY	6.0	4.2	4.0	3.8	3.9	3.8	4.2
JUNE	5.3	3.2	4.1	3.5	3.3	3.9	4.1
JULY	6.3	3.9	3.8	3.3	3.4	4.6	3.8
AUGUST	4.6	3.5	3.6	3.3	3.3	4.4	3.9
SEPTEMBER	5.8	4.3	4.1	4.4	4.3	5.7	4.7
OCTOBER	5.0	4.7	3.9	4.5	3.9	4.1	4.3
NOVEMBER	4.1	2.6	2.8	3.5	2.5	3.1	3.3
DECEMBER	3.9	2.5	2.4	2.5	2.2	3.2	3.5
TOTAL	64.8	43.2	41.0	39.1	37.9	45.1	46.1

TOURIST ARRIVALS

(000's)

<u>MONTH</u>	<u>1990</u>	<u>1991</u>	<u>1992</u>	<u>1993</u>	<u>1994</u>	<u>1995</u>	<u>1996</u>
JANUARY	2.0	1.9	1.6	1.5	1.7	1.6	2.0
FEBRUARY	2.4	1.9	2.2	1.5	1.7	2.2	2.5
MARCH	3.0	2.3	2.7	2.1	2.1	2.4	2.7
APRIL	3.4	2.1	2.8	2.1	2.1	2.8	3.0
MAY	2.8	2.4	2.9	2.6	2.4	2.6	2.6
JUNE	2.3	2.1	2.8	2.4	2.3	2.7	2.6
JULY	3.1	2.5	2.6	2.2	2.4	3.3	2.7
AUGUST	2.5	2.4	2.9	2.5	2.3	3.1	3.0
SEPTEMBER	3.1	2.4	2.6	2.9	2.9	4.1	3.0
OCTOBER	2.6	2.5	2.7	2.9	2.7	3.2	3.1
NOVEMBER	2.1	1.6	2.0	2.3	1.7	2.5	2.2
DECEMBER	2.0	1.7	1.9	1.9	1.6	2.5	2.5
TOTAL	31.3	26.0	29.9	27.0	25.9	33.1	31.9

Note: Yearly totals have been rounded off and need not necessarily equal the sum of the rounded-off monthly figures.

Table 4(c): Number of Arrivals by Month, 1997 - 2003

ALL ARRIVALS

(000's)

<u>MONTH</u>	<u>1997</u>	<u>1998</u>	<u>1999</u>	<u>2000</u>	<u>2001</u>	<u>2002</u>	<u>2003</u>
JANUARY	2.4	3.0	2.6	2.2	3.1	3.2	3.7
FEBRUARY	3.2	2.8	2.6	2.8	3.3	4.1	4.4
MARCH	3.3	3.1	3.6	3.9	4.5	4.6	5.4
APRIL	3.9	3.4	3.7	4.2	4.3	4.5	5.0
MAY	4.8	3.8	3.6	4.8	5.0	5.1	5.6
JUNE	4.7	3.5	3.8	4.8	5.0	4.3	5.9
JULY	4.3	3.4	3.4	4.0	5.0	5.8	5.2
AUGUST	5.5	4.2	4.3	4.6	5.3	5.8	5.9
SEPTEMBER	5.4	4.0	4.2	5.6	5.4	6.6	5.8
OCTOBER	3.9	4.2	4.3	4.8	5.1	6.2	5.6
NOVEMBER	3.8	3.6	3.7	3.9	4.3	5.1	5.4
DECEMBER	3.2	2.8	2.4	3.3	3.5	4.1	3.9
TOTAL	48.4	41.6	42.1	48.9	53.8	59.4	61.8

TOURIST ARRIVALS

(000's)

<u>MONTH</u>	<u>1997</u>	<u>1998</u>	<u>1999</u>	<u>2000</u>	<u>2001</u>	<u>2002</u>	<u>2003</u>
JANUARY	1.5	1.6	1.7	1.5	2.3	2.3	2.3
FEBRUARY	1.9	1.7	1.7	1.9	2.4	3.0	2.9
MARCH	1.9	2.1	2.3	2.8	3.2	3.5	3.6
APRIL	2.2	2.3	2.3	3.0	3.1	3.2	3.2
MAY	2.8	2.5	2.5	3.5	3.5	3.8	3.5
JUNE	2.7	2.4	2.5	3.6	3.4	3.0	3.7
JULY	2.8	2.3	2.2	2.9	3.7	4.0	3.5
AUGUST	3.3	3.0	2.8	3.5	4.1	4.1	4.1
SEPTEMBER	3.1	3.0	2.7	4.1	4.1	4.7	4.0
OCTOBER	2.8	2.9	3.0	3.6	3.8	4.0	3.9
NOVEMBER	2.0	2.4	2.3	2.9	3.4	3.3	3.5
DECEMBER	1.9	1.8	1.7	2.4	2.5	2.7	2.6
TOTAL	28.9	27.9	27.7	35.9	39.4	41.5	40.8

Note: Yearly totals have been rounded off and need not necessarily equal the sum of the rounded-off monthly figures.

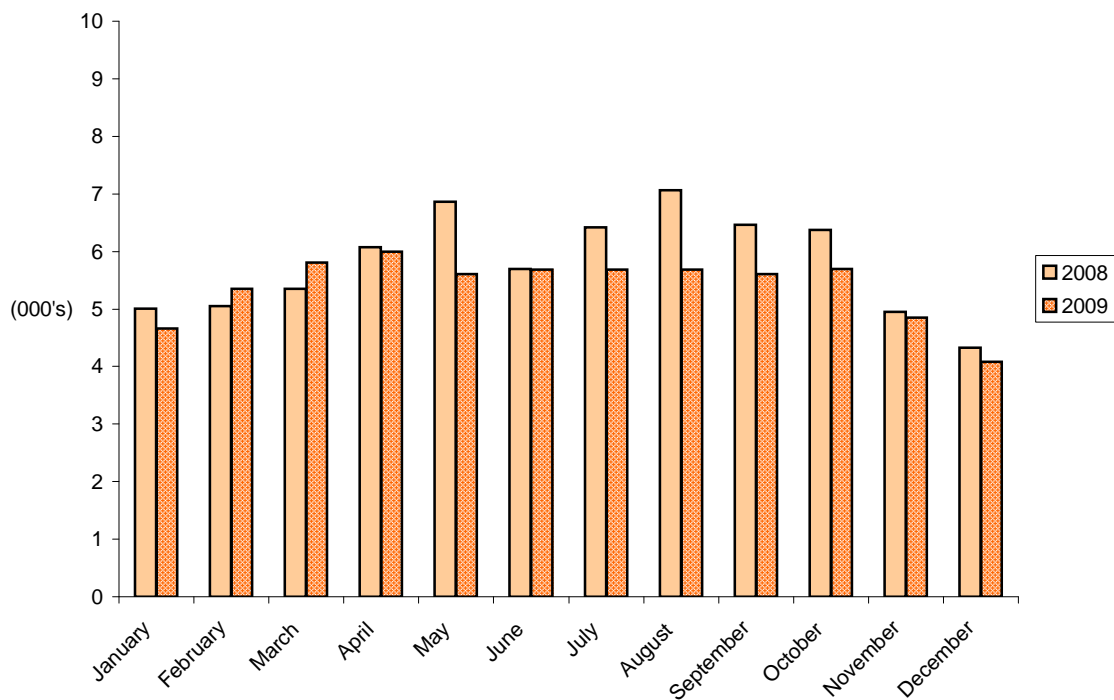
Table 4(d): Number of Arrivals by Month, 2004 - 2009

ALL ARRIVALS

(000's)

<u>MONTH</u>	<u>2004</u>	<u>2005</u>	<u>2006</u>	<u>2007</u>	<u>2008</u>	<u>2009</u>
JANUARY	3.8	4.0	4.3	3.9	5.0	4.7
FEBRUARY	4.4	4.6	4.5	4.1	5.1	5.3
MARCH	5.5	5.0	5.5	4.6	5.4	5.8
APRIL	4.7	5.1	5.3	5.0	6.1	6.0
MAY	5.7	5.7	5.7	5.9	6.9	5.6
JUNE	5.5	5.1	5.5	5.7	5.7	5.7
JULY	5.3	5.0	5.0	5.4	6.4	5.7
AUGUST	5.6	5.5	4.5	6.3	7.1	5.7
SEPTEMBER	6.2	5.7	5.4	6.3	6.5	5.6
OCTOBER	5.6	5.3	5.4	6.8	6.4	5.7
NOVEMBER	5.4	4.4	4.4	5.5	4.9	4.9
DECEMBER	3.9	3.7	3.8	4.3	4.3	4.1
TOTAL	61.7	58.8	59.2	63.7	69.6	64.7

ALL ARRIVALS AT HOTELS, 2008 - 2009



Note: Yearly totals have been rounded off and need not necessarily equal the sum of the rounded-off monthly figures.

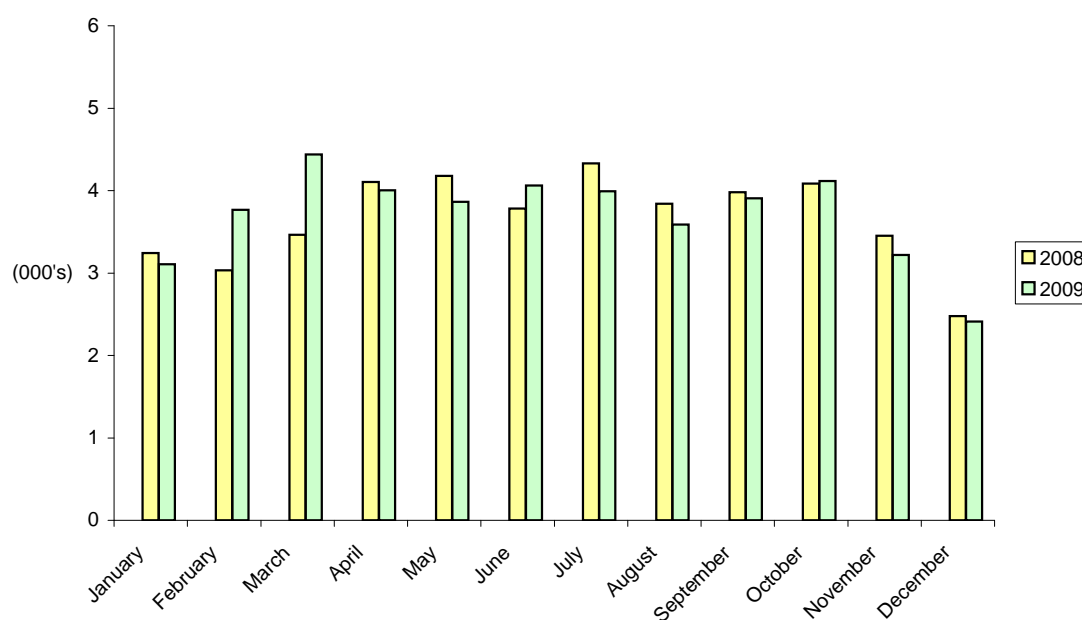
Table 4(e): Number of Arrivals by Month, 2004 - 2009

TOURIST ARRIVALS

(000's)

<u>MONTH</u>	<u>2004</u>	<u>2005</u>	<u>2006</u>	<u>2007</u>	<u>2008</u>	<u>2009</u>
JANUARY	2.7	2.8	2.5	2.4	3.2	3.1
FEBRUARY	3.0	3.3	2.6	2.3	3.0	3.8
MARCH	3.8	3.7	3.6	3.1	3.5	4.4
APRIL	3.4	3.6	3.6	3.1	4.1	4.0
MAY	4.4	4.3	4.2	3.4	4.2	3.9
JUNE	3.8	3.8	3.9	3.7	3.8	4.1
JULY	3.9	3.5	3.2	3.6	4.3	4.0
AUGUST	4.2	4.0	3.2	3.8	3.8	3.6
SEPTEMBER	4.6	4.1	3.8	4.0	4.0	3.9
OCTOBER	4.1	3.8	3.9	4.6	4.1	4.1
NOVEMBER	3.8	2.7	3.0	3.5	3.5	3.2
DECEMBER	2.8	2.2	2.2	2.3	2.5	2.4
TOTAL	44.5	41.9	39.8	39.8	44.0	44.5

TOURIST ARRIVALS AT HOTELS, 2008 - 2009



Note: Yearly totals have been rounded off and need not necessarily equal the sum of the rounded-off monthly figures.

Table 5(a): Guest Nights Sold/Offered, % Sleeper Occupancy, 1983 - 1986

<u>MONTH</u>	<u>ALL ARRIVALS</u>											
	<u>(000's)</u>				<u>(000's)</u>				<u>%</u>			
	<u>GUEST NIGHTS SOLD</u>				<u>GUEST NIGHTS OFFERED</u>				<u>SLEEPER OCCUPANCY</u>			
	<u>1983</u>	<u>1984</u>	<u>1985</u>	<u>1986</u>	<u>1983</u>	<u>1984</u>	<u>1985</u>	<u>1986</u>	<u>1983</u>	<u>1984</u>	<u>1985</u>	<u>1986</u>
JANUARY	9	9	11	13	45	46	45	43	19.0	20.7	24.3	30.1
FEBRUARY	11	13	18	15	41	43	41	38	27.7	30.0	42.7	39.0
MARCH	16	15	25	21	46	47	46	43	34.8	32.5	54.0	48.7
APRIL	16	18	25	18	45	45	45	42	35.9	39.9	56.8	42.0
MAY	20	23	23	25	46	46	47	45	43.2	50.5	50.3	57.2
JUNE	23	23	31	29	45	45	45	43	49.7	50.8	69.4	67.9
JULY	20	22	28	23	47	45	48	44	42.3	50.1	58.0	51.8
AUGUST	25	25	32	27	47	47	48	46	54.0	53.0	67.7	59.7
SEPTEMBER	25	27	32	29	46	44	46	44	54.6	61.0	68.2	64.8
OCTOBER	21	25	27	26	47	46	48	45	43.7	53.2	55.6	59.3
NOVEMBER	13	15	17	23	45	45	46	43	30.2	32.3	36.9	54.1
DECEMBER	11	11	13	17	46	47	47	44	24.4	22.9	27.3	38.5
TOTAL	210	226	282	266	546	546	552	520	38.4	41.3	51.0	51.3

Table 5(b): Guest Nights Sold/Offered, % Sleeper Occupancy, 1987 - 1990

<u>MONTH</u>	<u>ALL ARRIVALS</u>											
	<u>(000's)</u>				<u>(000's)</u>				<u>%</u>			
	<u>GUEST NIGHTS SOLD</u>				<u>GUEST NIGHTS OFFERED</u>				<u>SLEEPER OCCUPANCY</u>			
	<u>1987</u>	<u>1988</u>	<u>1989</u>	<u>1990</u>	<u>1987</u>	<u>1988</u>	<u>1989</u>	<u>1990</u>	<u>1987</u>	<u>1988</u>	<u>1989</u>	<u>1990</u>
JANUARY	19	16	15	11	46	46	42	37	42.1	35.8	35.2	31.2
FEBRUARY	18	19	18	14	42	44	40	37	43.9	42.6	46.0	37.3
MARCH	26	26	22	19	46	48	42	42	57.5	53.6	52.0	45.3
APRIL	24	26	23	23	43	45	42	41	55.6	57.1	54.8	55.4
MAY	25	26	19	21	45	47	44	42	55.7	55.1	41.9	50.4
JUNE	22	29	19	15	44	47	43	39	49.1	61.6	43.9	37.3
JULY	20	27	20	18	45	48	43	42	44.5	55.8	46.8	43.8
AUGUST	26	24	19	15	45	48	43	41	57.7	50.4	45.1	35.2
SEPTEMBER	29	26	19	18	45	44	42	41	65.6	60.4	46.0	44.4
OCTOBER	26	26	19	18	44	46	40	40	58.8	56.4	46.2	44.5
NOVEMBER	24	22	14	12	44	43	38	40	54.4	51.4	38.2	30.2
DECEMBER	20	19	13	13	46	45	42	39	42.5	42.6	31.2	32.4
TOTAL	279	286	220	197	535	551	501	481	52.3	52.0	44.0	40.8

Note: Yearly totals have been rounded off and need not necessarily equal the sum of the rounded-off monthly figures.

Table 5(c): Guest Nights Sold/Offered, % Sleeper Occupancy, 1991 - 1994**ALL ARRIVALS**

<u>MONTH</u>	<u>(000's)</u>				<u>(000's)</u>				<u>%</u>			
	<u>GUEST NIGHTS SOLD</u>				<u>GUEST NIGHTS OFFERED</u>				<u>SLEEPER OCCUPANCY</u>			
	<u>1991</u>	<u>1992</u>	<u>1993</u>	<u>1994</u>	<u>1991</u>	<u>1992</u>	<u>1993</u>	<u>1994</u>	<u>1991</u>	<u>1992</u>	<u>1993</u>	<u>1994</u>
JANUARY	12	9	7	10	40	42	33	34	29.4	20.6	21.5	29.4
FEBRUARY	13	9	9	9	37	41	30	30	34.5	22.8	30.1	31.3
MARCH	17	14	12	12	44	46	33	33	37.5	29.6	36.2	37.2
APRIL	14	14	12	12	41	42	32	31	34.0	32.6	38.3	39.2
MAY	17	15	16	15	41	43	34	35	40.2	35.6	45.6	42.5
JUNE	16	16	15	14	44	47	32	33	35.8	34.8	48.0	40.6
JULY	16	16	14	15	43	45	32	35	37.9	35.2	41.8	42.4
AUGUST	16	14	14	13	40	44	33	35	41.2	32.2	44.0	37.0
SEPTEMBER	17	16	18	16	44	41	32	33	39.2	39.7	56.2	48.9
OCTOBER	18	15	17	15	43	42	34	35	42.5	34.6	50.9	43.9
NOVEMBER	13	10	13	9	41	32	32	33	31.1	32.6	39.4	27.8
DECEMBER	10	9	10	9	45	33	33	34	22.4	27.0	29.6	25.2
TOTAL	178	157	157	149	502	497	391	401	35.5	31.6	40.2	37.2

Table 5(d): Guest Nights Sold/Offered, % Sleeper Occupancy, 1995 - 1998**ALL ARRIVALS**

<u>MONTH</u>	<u>(000's)</u>				<u>(000's)</u>				<u>%</u>			
	<u>GUEST NIGHTS SOLD</u>				<u>GUEST NIGHTS OFFERED</u>				<u>SLEEPER OCCUPANCY</u>			
	<u>1995</u>	<u>1996</u>	<u>1997</u>	<u>1998</u>	<u>1995</u>	<u>1996</u>	<u>1997</u>	<u>1998</u>	<u>1995</u>	<u>1996</u>	<u>1997</u>	<u>1998</u>
JANUARY	6	8	8	7	32	32	31	30	19.0	24.9	24.1	24.8
FEBRUARY	10	9	10	9	28	30	29	25	34.9	29.9	34.1	35.4
MARCH	10	12	10	11	31	32	31	28	33.4	36.3	33.0	38.8
APRIL	13	12	11	11	25	31	31	26	49.5	39.1	36.3	42.4
MAY	13	14	14	12	31	32	32	27	41.4	43.0	45.0	45.6
JUNE	14	13	13	13	30	30	30	28	46.3	37.2	44.4	45.9
JULY	15	12	14	13	32	31	31	29	48.2	39.0	44.1	43.9
AUGUST	15	13	16	16	32	31	31	29	46.2	42.3	51.3	54.4
SEPTEMBER	18	16	16	17	31	31	31	28	58.0	51.9	50.7	59.8
OCTOBER	13	13	14	15	32	31	31	29	41.1	42.8	44.1	50.2
NOVEMBER	9	10	10	12	31	30	31	28	28.1	31.3	31.7	43.8
DECEMBER	9	9	9	9	32	31	31	29	26.7	29.0	28.2	32.2
TOTAL	144	141	144	144	369	372	370	336	39.2	37.8	39.0	43.1

Note: Yearly totals have been rounded off and need not necessarily equal the sum of the rounded-off monthly figures.

Table 5(e): Guest Nights Sold/Offered, % Sleeper Occupancy, 1999 - 2002**ALL ARRIVALS**

<u>MONTH</u>	<u>(000's)</u>				<u>(000's)</u>				<u>%</u>			
	<u>GUEST NIGHTS SOLD</u>				<u>GUEST NIGHTS OFFERED</u>				<u>SLEEPER OCCUPANCY</u>			
	<u>1999</u>	<u>2000</u>	<u>2001</u>	<u>2002</u>	<u>1999</u>	<u>2000</u>	<u>2001</u>	<u>2002</u>	<u>1999</u>	<u>2000</u>	<u>2001</u>	<u>2002</u>
JANUARY	8	6	8	9	29	31	31	31	28.8	20.0	27.0	30.5
FEBRUARY	9	9	11	12	26	29	28	28	34.2	30.4	40.0	42.9
MARCH	13	12	15	15	29	31	31	31	45.5	37.5	47.9	47.7
APRIL	13	14	15	14	29	30	30	30	44.3	45.0	48.4	46.3
MAY	13	19	17	16	29	31	31	31	43.7	60.3	55.0	51.3
JUNE	14	17	18	13	29	30	30	30	49.1	56.6	58.3	43.6
JULY	13	16	17	18	29	31	31	31	44.5	50.2	53.5	56.8
AUGUST	16	16	18	18	29	31	31	31	56.3	51.8	57.4	58.8
SEPTEMBER	16	19	20	21	29	31	30	30	56.9	61.7	64.6	69.3
OCTOBER	15	15	18	19	31	31	31	31	50.0	48.7	57.3	61.3
NOVEMBER	14	12	13	15	30	30	30	30	46.0	38.9	43.5	50.9
DECEMBER	8	11	11	11	31	31	31	31	25.6	34.1	34.1	36.4
TOTAL	154	164	179	182	351	368	366	367	43.8	44.6	48.9	49.7

Table 5(f): Guest Nights Sold/Offered, % Sleeper Occupancy, 2003 - 2006**ALL ARRIVALS**

<u>MONTH</u>	<u>(000's)</u>				<u>(000's)</u>				<u>%</u>			
	<u>GUEST NIGHTS SOLD</u>				<u>GUEST NIGHTS OFFERED</u>				<u>SLEEPER OCCUPANCY</u>			
	<u>2003</u>	<u>2004</u>	<u>2005</u>	<u>2006</u>	<u>2003</u>	<u>2004</u>	<u>2005</u>	<u>2006</u>	<u>2003</u>	<u>2004</u>	<u>2005</u>	<u>2006</u>
JANUARY	10	11	12	12	31	29	31	34	33.1	36.7	38.7	34.2
FEBRUARY	13	13	15	13	28	29	27	31	45.5	45.2	58.0	41.2
MARCH	16	17	15	17	31	31	29	34	51.8	56.3	52.8	49.5
APRIL	15	15	17	16	30	30	28	33	51.1	50.0	59.3	49.3
MAY	17	18	18	17	31	31	30	34	54.4	57.8	60.4	50.7
JUNE	18	18	18	18	30	30	28	33	60.9	59.4	64.5	55.4
JULY	16	19	16	19	31	31	29	35	53.2	61.2	57.1	54.0
AUGUST	18	21	18	17	31	31	29	35	58.2	65.9	62.0	49.3
SEPTEMBER	20	22	20	20	30	31	28	34	64.8	71.7	70.1	57.9
OCTOBER	18	19	20	18	31	31	29	35	57.0	60.1	68.5	52.7
NOVEMBER	15	17	15	14	30	30	29	34	49.5	55.0	52.6	40.7
DECEMBER	11	13	11	12	31	31	32	35	34.6	40.1	33.7	33.7
TOTAL	188	202	196	193	367	366	349	406	51.2	55.1	56.2	47.3

Note: Yearly totals have been rounded off and need not necessarily equal the sum of the rounded-off monthly figures.

Table 5(g): Guest Nights Sold, 2007 - 2009

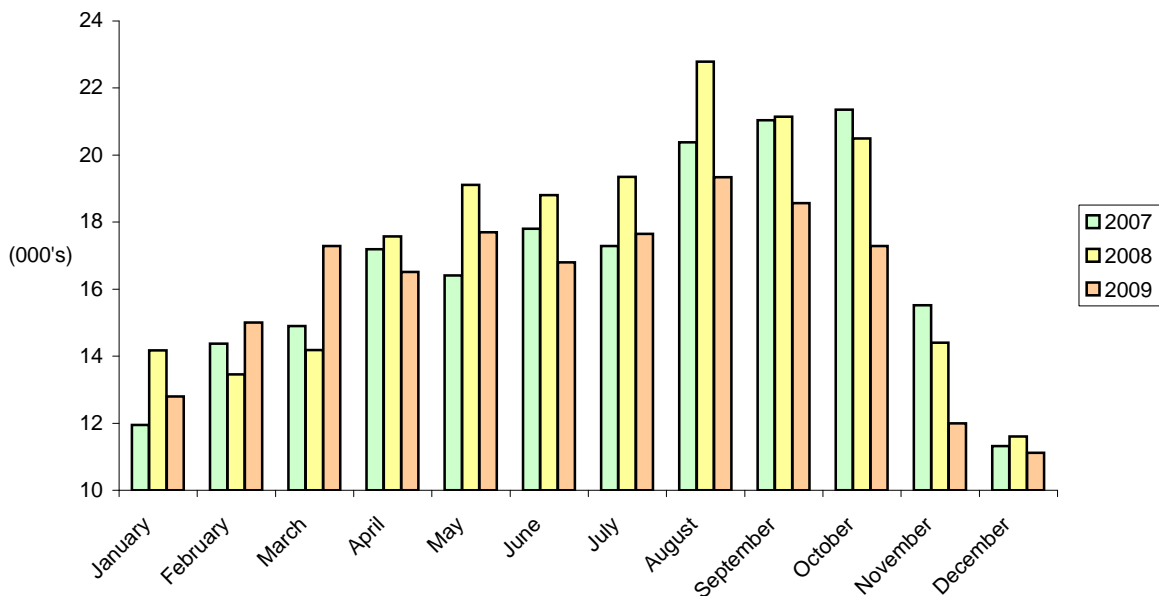
ALL ARRIVALS

GUEST NIGHTS SOLD

(000's)

<u>MONTH</u>	<u>2007</u>	<u>2008</u>	<u>2009</u>
JANUARY	11.9	14.2	12.8
FEBRUARY	14.4	13.5	15.0
MARCH	14.9	14.2	17.3
APRIL	17.2	17.6	16.5
MAY	16.4	19.1	17.7
JUNE	17.8	18.8	16.8
JULY	17.3	19.4	17.6
AUGUST	20.4	22.8	19.3
SEPTEMBER	21.0	21.1	18.6
OCTOBER	21.4	20.5	17.3
NOVEMBER	15.5	14.4	12.0
DECEMBER	11.3	11.6	11.1
TOTAL	199.5	207.1	192.1

GUEST NIGHTS SOLD, ALL ARRIVALS, 2007 - 2009



Note: Yearly totals have been rounded off and need not necessarily equal the sum of the rounded-off monthly figures.

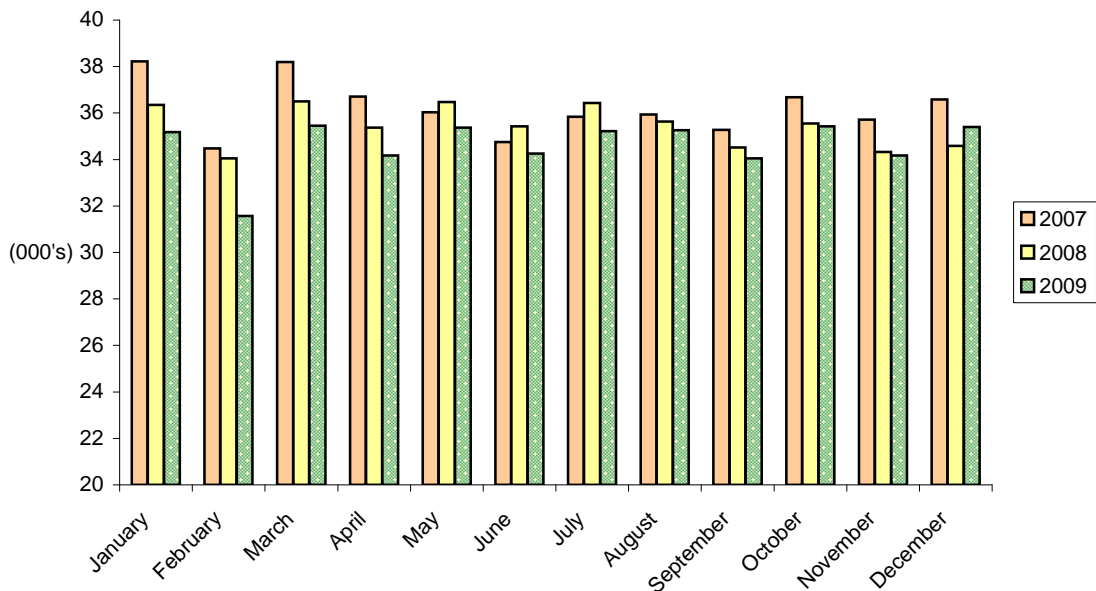
Table 5(h): Guest Nights Offered, 2007 - 2009

ALL ARRIVALS

GUEST NIGHTS OFFERED

<u>MONTH</u>	<u>(000's)</u>		
	<u>2007</u>	<u>2008</u>	<u>2009</u>
JANUARY	38.2	36.4	35.2
FEBRUARY	34.5	34.1	31.6
MARCH	38.2	36.5	35.5
APRIL	36.7	35.4	34.2
MAY	36.0	36.5	35.4
JUNE	34.8	35.4	34.3
JULY	35.8	36.4	35.2
AUGUST	35.9	35.6	35.3
SEPTEMBER	35.3	34.5	34.0
OCTOBER	36.7	35.5	35.4
NOVEMBER	35.7	34.3	34.2
DECEMBER	36.6	34.6	35.4
TOTAL	434.4	425.2	415.6

GUEST NIGHTS OFFERED, ALL ARRIVALS, 2007 - 2009



Note: Yearly totals have been rounded off and need not necessarily equal the sum of the rounded-off monthly figures.

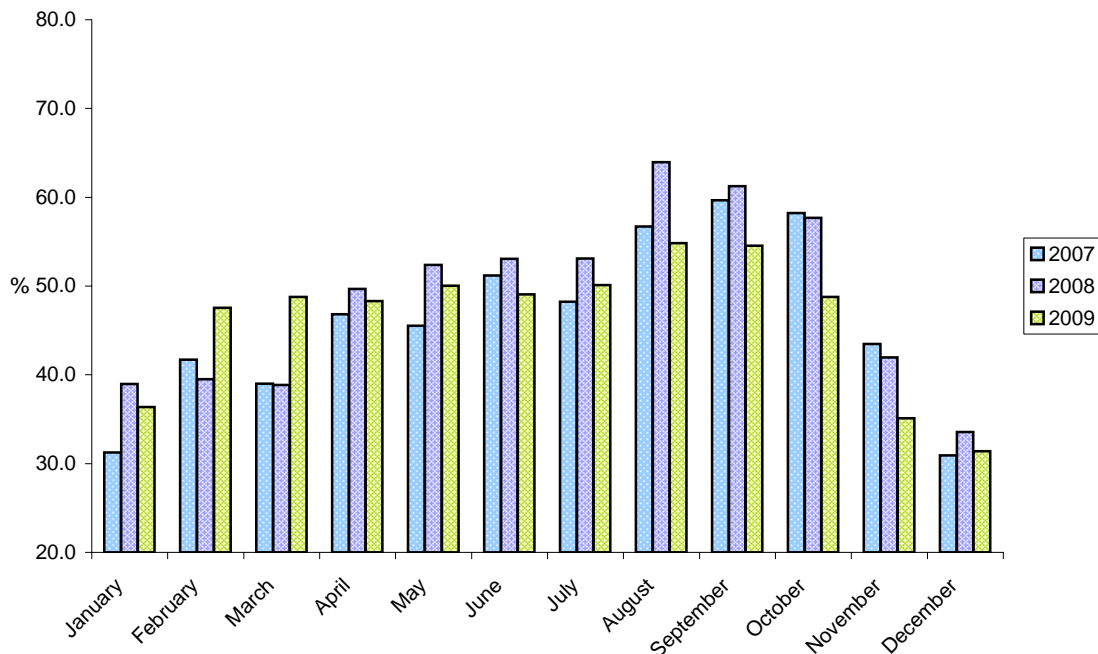
Table 5(i): % Sleeper Occupancy, 2007 - 2009

ALL ARRIVALS

%

<u>MONTH</u>	<u>2007</u>	<u>2008</u>	<u>2009</u>
JANUARY	31.3	39.0	36.4
FEBRUARY	41.7	39.5	47.5
MARCH	39.0	38.9	48.8
APRIL	46.8	49.7	48.3
MAY	45.5	52.4	50.0
JUNE	51.2	53.1	49.1
JULY	48.2	53.1	50.1
AUGUST	56.7	64.0	54.8
SEPTEMBER	59.7	61.3	54.5
OCTOBER	58.2	57.7	48.8
NOVEMBER	43.5	42.0	35.1
DECEMBER	30.9	33.6	31.4
TOTAL	45.9	48.7	46.2

% SLEEPER OCCUPANCY, ALL ARRIVALS, 2007 - 2009



Note: Yearly totals have been rounded off and need not necessarily equal the sum of the rounded-off monthly figures.

Table 6(a): Guest Nights Sold/Offered, % Sleeper Occupancy, 1983 - 1986

<u>TOURIST ARRIVALS</u>												
	<u>(000's)</u>				<u>(000's)</u>				<u>%</u>			
	<u>GUEST NIGHTS SOLD</u>				<u>GUEST NIGHTS OFFERED</u>				<u>SLEEPER OCCUPANCY</u>			
<u>MONTH</u>	<u>1983</u>	<u>1984</u>	<u>1985</u>	<u>1986</u>	<u>1983</u>	<u>1984</u>	<u>1985</u>	<u>1986</u>	<u>1983</u>	<u>1984</u>	<u>1985</u>	<u>1986</u>
JANUARY	7	7	8	10	45	46	45	43	15.5	15.0	16.5	22.1
FEBRUARY	8	8	14	12	41	43	41	38	20.7	19.4	33.8	31.0
MARCH	11	12	19	16	46	47	46	43	24.7	24.6	42.2	38.1
APRIL	10	13	18	13	45	45	45	42	23.4	28.4	40.2	30.7
MAY	14	15	18	19	46	46	47	45	29.4	33.2	39.4	41.9
JUNE	18	18	24	23	45	45	45	43	38.7	40.6	52.9	52.8
JULY	16	18	23	18	47	45	48	44	33.6	40.0	47.5	41.0
AUGUST	19	20	27	21	47	47	48	46	41.9	42.0	57.0	46.3
SEPTEMBER	19	22	26	21	46	44	46	44	41.7	50.2	56.7	48.1
OCTOBER	14	19	19	20	47	46	48	45	30.5	41.0	40.2	45.3
NOVEMBER	10	11	13	18	45	45	46	43	21.2	24.6	28.4	41.7
DECEMBER	9	8	9	12	46	47	47	44	18.4	17.4	18.8	27.5
TOTAL	155	171	218	203	546	546	552	520	28.4	31.3	39.6	38.6

Table 6(b): Guest Nights Sold/Offered, % Sleeper Occupancy, 1987 - 1990

<u>TOURIST ARRIVALS</u>												
	<u>(000's)</u>				<u>(000's)</u>				<u>%</u>			
	<u>GUEST NIGHTS SOLD</u>				<u>GUEST NIGHTS OFFERED</u>				<u>SLEEPER OCCUPANCY</u>			
<u>MONTH</u>	<u>1987</u>	<u>1988</u>	<u>1989</u>	<u>1990</u>	<u>1987</u>	<u>1988</u>	<u>1989</u>	<u>1990</u>	<u>1987</u>	<u>1988</u>	<u>1989</u>	<u>1990</u>
JANUARY	15	13	10	8	46	46	42	37	33.6	27.5	23.7	22.7
FEBRUARY	15	14	13	10	42	44	40	37	34.8	32.2	33.4	27.1
MARCH	21	19	15	13	46	48	42	42	46.3	39.8	36.2	31.0
APRIL	19	20	16	14	43	45	42	41	44.9	44.8	37.0	34.0
MAY	18	19	12	12	45	47	44	42	38.6	40.3	27.9	29.4
JUNE	16	20	14	10	44	47	43	39	36.9	43.5	32.7	24.3
JULY	15	19	13	12	45	48	43	42	34.3	39.2	30.6	27.4
AUGUST	19	17	13	10	45	48	43	41	42.5	34.5	30.6	23.1
SEPTEMBER	22	17	12	12	45	44	42	41	49.7	37.8	29.8	30.0
OCTOBER	21	17	14	11	44	46	40	40	46.4	37.9	34.0	27.8
NOVEMBER	18	14	11	8	44	43	38	40	41.8	32.5	27.6	19.5
DECEMBER	14	11	9	8	46	45	42	39	29.8	24.3	21.7	20.9
TOTAL	213	200	152	128	535	551	501	481	40.0	36.2	30.4	26.5

Note: Yearly totals have been rounded off and need not necessarily equal the sum of the rounded-off monthly figures.

Table 6(c): Guest Nights Sold/Offered, % Sleeper Occupancy, 1991 - 1994

<u>TOURIST ARRIVALS</u>												
	<u>(000's)</u>				<u>(000's)</u>				<u>%</u>			
	<u>GUEST NIGHTS SOLD</u>				<u>GUEST NIGHTS OFFERED</u>				<u>SLEEPER OCCUPANCY</u>			
<u>MONTH</u>	<u>1991</u>	<u>1992</u>	<u>1993</u>	<u>1994</u>	<u>1991</u>	<u>1992</u>	<u>1993</u>	<u>1994</u>	<u>1991</u>	<u>1992</u>	<u>1993</u>	<u>1994</u>
JANUARY	7	5	4	7	40	42	33	34	17.7	12.9	12.4	19.5
FEBRUARY	8	6	5	6	37	41	30	30	20.2	15.4	17.7	21.1
MARCH	8	9	8	8	44	46	33	33	19.1	19.3	23.0	24.5
APRIL	9	9	8	9	41	42	32	31	21.9	21.7	25.2	27.1
MAY	10	9	10	10	41	43	34	35	23.3	20.7	28.5	28.5
JUNE	8	10	10	9	44	47	32	33	19.4	22.0	32.7	28.3
JULY	10	10	8	10	43	45	32	35	23.2	21.3	26.2	28.7
AUGUST	8	10	10	8	40	44	33	35	21.3	22.0	30.5	25.6
SEPTEMBER	8	9	12	12	44	41	32	33	18.2	22.7	36.8	35.2
OCTOBER	10	9	11	11	43	42	34	35	23.3	20.8	33.2	30.4
NOVEMBER	7	6	9	7	41	32	32	33	16.4	20.1	27.8	20.6
DECEMBER	6	6	7	6	45	33	33	34	12.9	17.5	21.8	18.9
TOTAL	99	98	103	103	502	497	391	401	19.7	19.8	26.4	25.8

Table 6(d): Guest Nights Sold/Offered, % Sleeper Occupancy, 1995 - 1998

<u>TOURIST ARRIVALS</u>												
	<u>(000's)</u>				<u>(000's)</u>				<u>%</u>			
	<u>GUEST NIGHTS SOLD</u>				<u>GUEST NIGHTS OFFERED</u>				<u>SLEEPER OCCUPANCY</u>			
<u>MONTH</u>	<u>1995</u>	<u>1996</u>	<u>1997</u>	<u>1998</u>	<u>1995</u>	<u>1996</u>	<u>1997</u>	<u>1998</u>	<u>1995</u>	<u>1996</u>	<u>1997</u>	<u>1998</u>
JANUARY	5	5	5	4	32	32	31	30	15.1	16.4	15.2	14.4
FEBRUARY	7	7	6	5	28	30	29	25	25.8	22.8	22.3	21.4
MARCH	8	9	7	7	31	32	31	28	26.4	26.7	21.3	25.8
APRIL	10	10	7	7	25	31	31	26	38.1	30.9	23.9	28.8
MAY	9	10	10	8	31	32	32	27	30.8	30.9	29.9	30.6
JUNE	11	9	9	9	30	30	30	28	37.2	30.5	28.9	30.5
JULY	11	9	9	8	32	31	31	29	36.2	29.3	28.6	28.4
AUGUST	11	10	11	10	32	31	31	29	34.8	32.0	34.5	36.5
SEPTEMBER	14	10	11	12	31	31	31	28	45.6	34.3	34.8	41.5
OCTOBER	11	10	9	10	32	31	31	29	34.1	30.9	28.3	34.6
NOVEMBER	7	7	6	8	31	30	31	28	23.8	21.5	20.9	27.1
DECEMBER	7	6	6	6	32	31	31	29	21.8	20.7	18.9	19.5
TOTAL	113	101	95	94	369	372	370	336	30.7	27.2	25.6	28.2

Note: Yearly totals have been rounded off and need not necessarily equal the sum of the rounded-off monthly figures.

Table 6(e): Guest Nights Sold/Offered, % Sleeper Occupancy, 1999 - 2002

<u>TOURIST ARRIVALS</u>												
	<u>(000's)</u>				<u>(000's)</u>				<u>%</u>			
	<u>GUEST NIGHTS SOLD</u>				<u>GUEST NIGHTS OFFERED</u>				<u>SLEEPER OCCUPANCY</u>			
<u>MONTH</u>	<u>1999</u>	<u>2000</u>	<u>2001</u>	<u>2002</u>	<u>1999</u>	<u>2000</u>	<u>2001</u>	<u>2002</u>	<u>1999</u>	<u>2000</u>	<u>2001</u>	<u>2002</u>
JANUARY	5	4	6	6	29	31	31	31	17.2	13.0	19.3	20.4
FEBRUARY	6	6	8	8	26	29	28	28	21.8	20.0	26.9	28.8
MARCH	8	8	9	11	29	31	31	31	27.7	25.9	30.7	34.5
APRIL	8	9	9	10	29	30	30	30	27.3	30.8	29.1	33.0
MAY	9	12	11	11	29	31	31	31	30.0	39.1	34.9	36.5
JUNE	9	11	12	10	29	30	30	30	31.4	36.6	39.5	33.0
JULY	8	10	11	12	29	31	31	31	27.6	33.4	37.0	38.7
AUGUST	10	12	12	13	29	31	31	31	35.2	37.6	40.0	40.7
SEPTEMBER	10	14	14	15	29	31	30	30	36.2	44.3	46.3	48.7
OCTOBER	11	10	13	13	31	31	31	31	34.3	31.6	40.6	40.9
NOVEMBER	9	8	9	9	30	30	30	30	28.8	26.7	29.6	29.8
DECEMBER	5	7	7	7	31	31	31	31	17.3	21.6	22.1	22.9
TOTAL	98	111	121	125	351	368	366	367	27.9	30.1	33.0	34.0

Table 6(f): Guest Nights Sold/Offered, % Sleeper Occupancy, 2003 - 2006

<u>TOURIST ARRIVALS</u>												
	<u>(000's)</u>				<u>(000's)</u>				<u>%</u>			
	<u>GUEST NIGHTS SOLD</u>				<u>GUEST NIGHTS OFFERED</u>				<u>SLEEPER OCCUPANCY</u>			
<u>MONTH</u>	<u>2003</u>	<u>2004</u>	<u>2005</u>	<u>2006</u>	<u>2003</u>	<u>2004</u>	<u>2005</u>	<u>2006</u>	<u>2003</u>	<u>2004</u>	<u>2005</u>	<u>2006</u>
JANUARY	6	7	9	8	31	29	31	34	20.6	22.9	29.1	22.4
FEBRUARY	8	8	12	8	28	29	27	31	29.2	27.9	43.6	26.4
MARCH	11	11	12	11	31	31	29	34	34.0	37.0	42.6	31.2
APRIL	10	10	13	11	30	30	28	33	31.5	33.9	47.1	32.4
MAY	11	12	15	12	31	31	30	34	34.5	39.6	48.8	33.9
JUNE	12	11	15	13	30	30	28	33	38.5	37.4	52.2	37.8
JULY	11	15	13	12	31	31	29	35	34.8	47.4	43.7	34.9
AUGUST	13	16	13	13	31	31	29	35	40.4	50.7	46.1	35.8
SEPTEMBER	14	17	15	14	30	31	28	34	46.5	55.2	54.7	41.4
OCTOBER	12	15	16	13	31	31	29	35	40.0	48.2	53.4	38.0
NOVEMBER	10	13	10	9	30	30	29	34	33.2	41.5	36.0	27.2
DECEMBER	6	10	7	7	31	31	32	35	20.9	30.4	21.1	19.7
TOTAL	123	145	150	129	367	366	349	406	33.7	39.5	42.9	31.7

Note: Yearly totals have been rounded off and need not necessarily equal the sum of the rounded-off monthly figures.

Table 6(g): Guest Nights Sold, 2007 - 2009

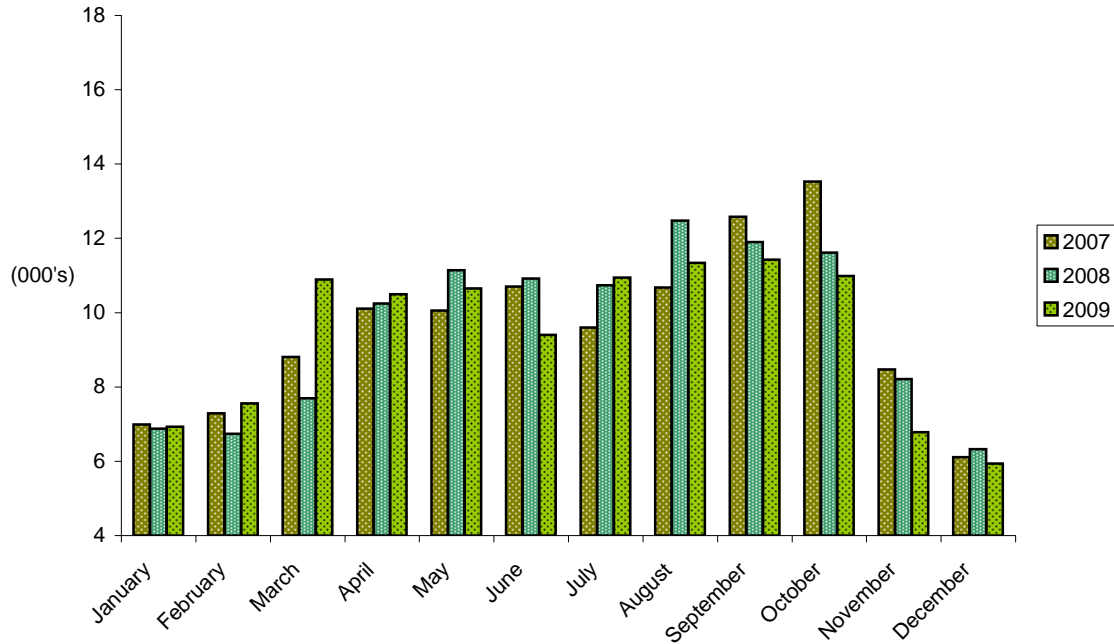
TOURIST ARRIVALS

GUEST NIGHTS SOLD

(000's)

<u>MONTH</u>	<u>2007</u>	<u>2008</u>	<u>2009</u>
JANUARY	7.0	6.9	6.9
FEBRUARY	7.3	6.7	7.6
MARCH	8.8	7.7	10.9
APRIL	10.1	10.2	10.5
MAY	10.1	11.1	10.7
JUNE	10.7	10.9	9.4
JULY	9.6	10.7	10.9
AUGUST	10.7	12.5	11.3
SEPTEMBER	12.6	11.9	11.4
OCTOBER	13.5	11.6	11.0
NOVEMBER	8.5	8.2	6.8
DECEMBER	6.1	6.3	5.9
TOTAL	114.9	114.9	113.3

GUEST NIGHTS SOLD, TOURIST ARRIVALS, 2007 - 2009



Note: Yearly totals have been rounded off and need not necessarily equal the sum of the rounded-off monthly figures.

Table 6(h): Guest Nights Offered, 2007 - 2009

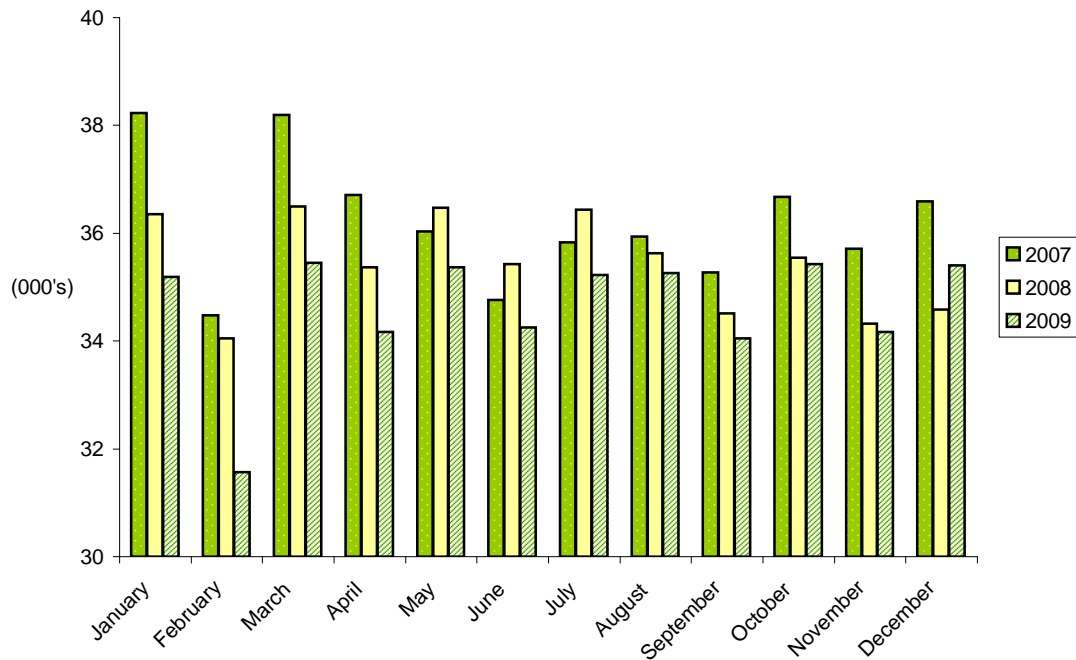
TOURIST ARRIVALS

GUEST NIGHTS OFFERED

(000's)

<u>MONTH</u>	<u>2007</u>	<u>2008</u>	<u>2009</u>
JANUARY	38.2	36.4	35.2
FEBRUARY	34.5	34.1	31.6
MARCH	38.2	36.5	35.5
APRIL	36.7	35.4	34.2
MAY	36.0	36.5	35.4
JUNE	34.8	35.4	34.3
JULY	35.8	36.4	35.2
AUGUST	35.9	35.6	35.3
SEPTEMBER	35.3	34.5	34.0
OCTOBER	36.7	35.5	35.4
NOVEMBER	35.7	34.3	34.2
DECEMBER	36.6	34.6	35.4
TOTAL	434.4	425.2	415.6

GUEST NIGHTS OFFERED, TOURIST ARRIVALS, 2007 - 2009



Note: Yearly totals have been rounded off and need not necessarily equal the sum of the rounded-off monthly figures.

Table 6(i): % Sleeper Occupancy, 2007 - 2009

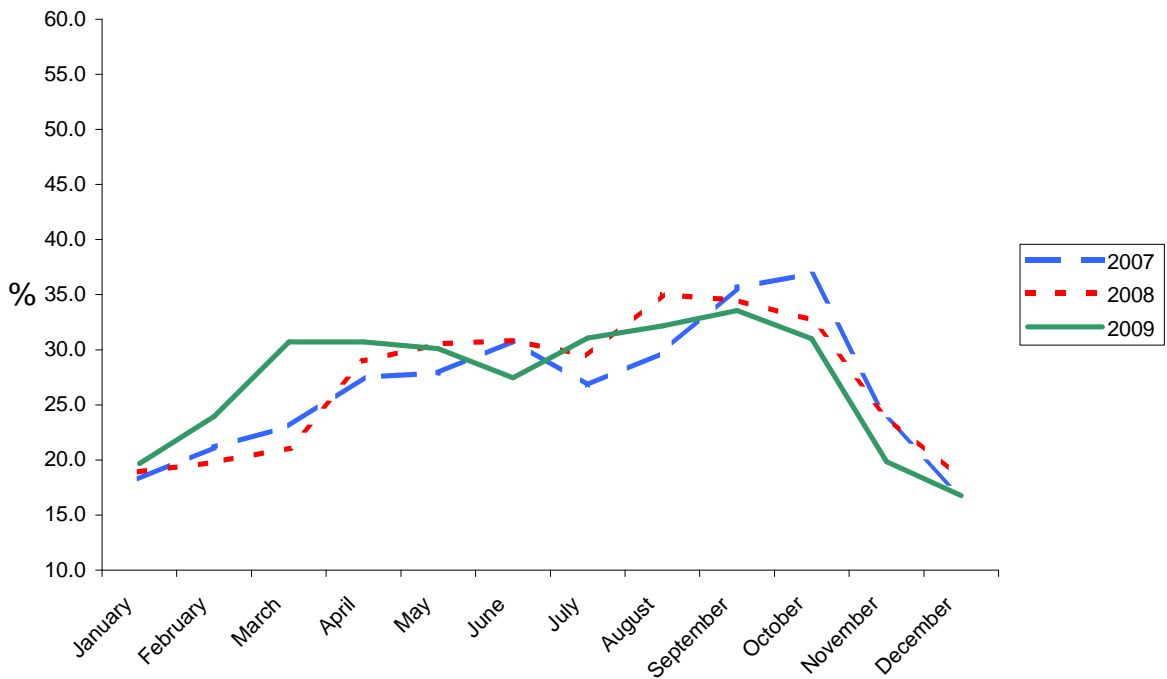
TOURIST ARRIVALS

SLEEPER OCCUPANCY

%

<u>MONTH</u>	<u>2007</u>	<u>2008</u>	<u>2009</u>
JANUARY	18.3	18.9	19.7
FEBRUARY	21.1	19.8	23.9
MARCH	23.1	21.1	30.7
APRIL	27.5	29.0	30.7
MAY	27.9	30.5	30.1
JUNE	30.8	30.8	27.5
JULY	26.8	29.5	31.1
AUGUST	29.7	35.0	32.2
SEPTEMBER	35.7	34.5	33.6
OCTOBER	36.9	32.7	31.0
NOVEMBER	23.7	23.9	19.9
DECEMBER	16.7	18.3	16.8
TOTAL	26.5	27.0	27.3

% SLEEPER OCCUPANCY, TOURIST ARRIVALS, 2007 - 2009



Note: Yearly totals have been rounded off and need not necessarily equal the sum of the rounded-off monthly figures.

Table 7(a): Average Length of Stay Per Person (Nights), 1998 - 2009

ALL ARRIVALS

<u>YEAR</u>	<u>JAN</u>	<u>FEB</u>	<u>MAR</u>	<u>APR</u>	<u>MAY</u>	<u>JUN</u>	<u>JUL</u>	<u>AUG</u>	<u>SEP</u>	<u>OCT</u>	<u>NOV</u>	<u>DEC</u>	<u>TOTAL</u>
1998	2.5	3.2	3.5	3.2	3.3	3.7	3.7	3.7	4.2	3.5	3.5	3.3	3.5
1999	3.3	3.5	3.7	3.5	3.6	3.8	3.8	3.8	3.9	3.6	3.8	3.3	3.7
2000	2.9	3.2	3.0	3.2	3.9	3.5	3.9	3.5	3.4	3.1	3.0	3.2	3.4
2001	2.7	3.4	3.3	3.4	3.4	3.5	3.3	3.4	3.6	3.5	3.5	3.1	3.3
2002	3.0	2.9	3.2	3.1	3.1	3.0	3.1	3.1	3.2	3.1	3.0	2.8	3.1
2003	2.8	2.9	3.0	3.1	3.0	3.1	3.1	3.1	3.4	3.2	2.8	2.7	3.0
2004	2.9	2.9	3.2	3.2	3.1	3.2	3.6	3.7	3.5	3.4	3.1	3.2	3.3
2005	3.0	3.4	3.1	3.3	3.2	3.6	3.3	3.3	3.5	3.8	3.5	2.9	3.3
2006	2.8	2.9	3.1	3.1	3.0	3.4	3.8	3.8	3.6	3.4	3.1	3.0	3.2
2007	3.1	3.5	3.3	3.4	2.8	3.1	3.2	3.3	3.4	3.1	2.8	2.6	3.1
2008	2.8	2.7	2.6	2.9	2.8	3.3	3.0	3.2	3.3	3.2	2.9	2.7	3.0
2009	2.7	2.8	3.0	2.8	3.2	3.0	3.1	3.4	3.3	3.0	2.5	2.7	3.0

AVERAGE LENGTH OF STAY, ALL ARRIVALS, 2007 - 2009

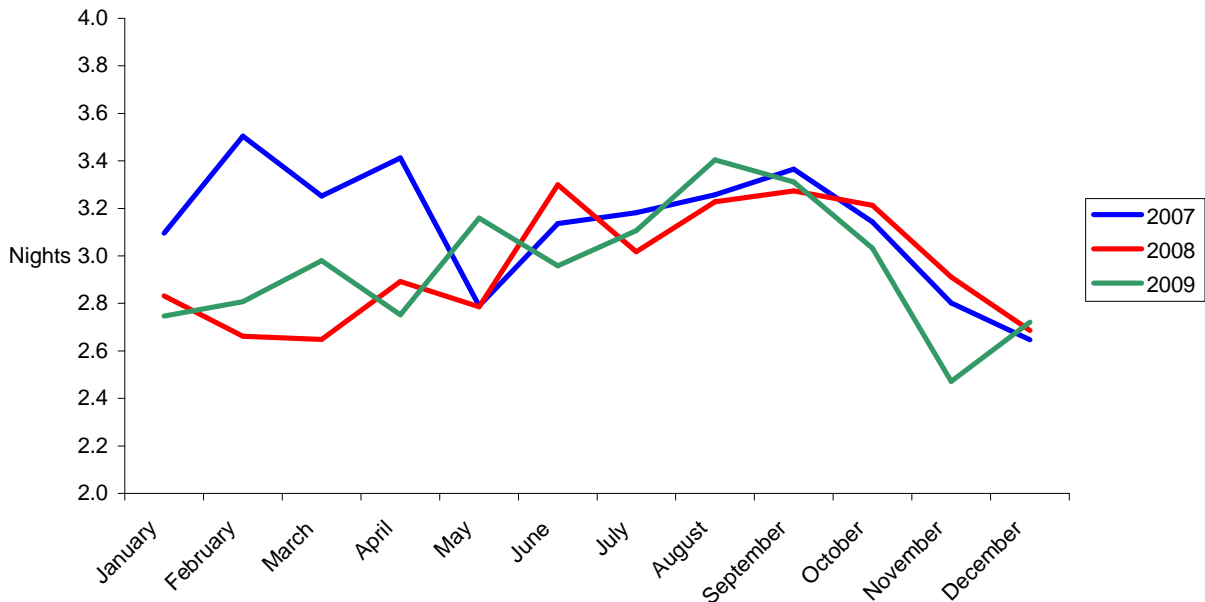


Table 7(b): Average Length of Stay Per Person (Nights), 1998 - 2009

TOURIST ARRIVALS

<u>YEAR</u>	<u>JAN</u>	<u>FEB</u>	<u>MAR</u>	<u>APR</u>	<u>MAY</u>	<u>JUN</u>	<u>JUL</u>	<u>AUG</u>	<u>SEP</u>	<u>OCT</u>	<u>NOV</u>	<u>DEC</u>	<u>TOTAL</u>
1998	2.8	3.1	3.4	3.2	3.4	3.5	3.5	3.5	3.9	3.5	3.3	3.0	3.4
1999	3.0	3.4	3.5	3.4	3.5	3.6	3.6	3.6	3.9	3.6	3.8	3.2	3.5
2000	2.6	3.0	2.9	3.1	3.5	3.1	3.5	3.3	3.3	2.7	2.8	2.7	3.1
2001	2.6	3.2	3.0	2.9	3.1	3.5	3.1	3.0	3.4	3.3	2.6	2.6	3.1
2002	2.8	2.7	3.0	3.1	3.0	3.4	3.0	3.1	3.2	3.2	2.7	2.7	3.0
2003	2.8	2.9	3.0	2.9	3.0	3.2	3.1	3.1	3.5	3.2	2.8	2.4	3.0
2004	2.5	2.6	3.0	3.0	2.8	3.0	3.8	3.8	3.7	3.7	3.3	3.4	3.2
2005	3.2	3.6	3.4	3.7	3.4	3.8	3.6	3.3	3.8	4.0	3.8	3.0	3.6
2006	3.0	3.1	2.9	3.0	2.8	3.2	3.8	3.9	3.7	3.4	3.0	3.0	3.2
2007	2.9	3.2	2.9	3.2	3.0	2.9	2.7	2.8	3.1	2.9	2.4	2.6	2.9
2008	2.1	2.2	2.2	2.5	2.7	2.9	2.5	3.2	3.0	2.8	2.4	2.6	2.6
2009	2.2	2.0	2.5	2.6	2.8	2.3	2.7	3.2	2.9	2.7	2.1	2.5	2.5

AVERAGE LENGTH OF STAY, TOURIST ARRIVALS, 2007 - 2009

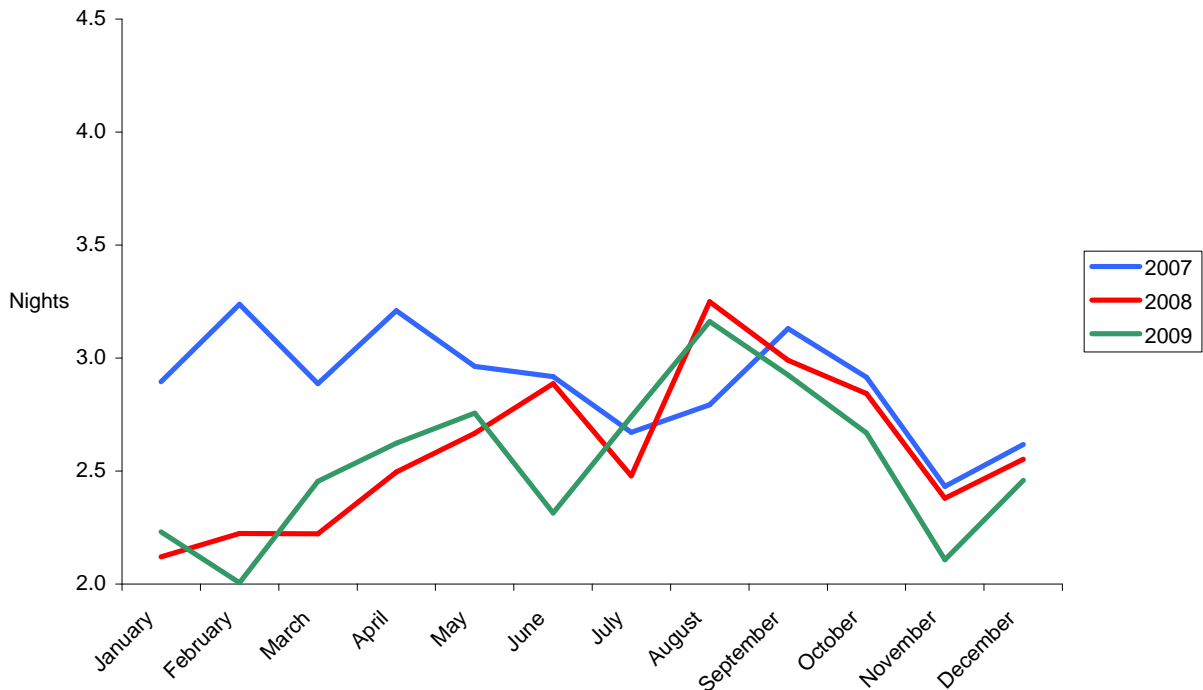


Table 8: Summary of Hotel Statistics, 1983- 2009

<u>YEAR</u>	<u>ARRIVALS AT HOTELS</u>	<u>GUEST NIGHTS SOLD</u>	<u>% SLEEPER OCCUPANCY</u>	<u>AV. LENGTH OF STAY (NIGHTS)</u>
1983	33,142	209,930	38.4	6.3
1984	35,690	225,873	41.3	6.3
1985	55,119	281,525	51.0	5.1
1986	56,525	266,223	51.3	4.6
1987	64,349	279,377	52.3	4.3
1988	64,942	286,295	52.0	4.4
1989	67,934	220,083	44.0	3.2
1990	64,793	196,516	40.8	3.0
1991	43,193	178,053	35.5	4.1
1992	40,986	156,947	31.6	3.8
1993	39,123	157,215	40.2	4.0
1994	37,851	149,292	37.2	3.9
1995	45,056	144,453	39.2	3.2
1996	46,142	140,596	37.8	3.1
1997	48,420	143,972	39.0	3.0
1998	41,616	144,538	43.1	3.5
1999	42,031	153,583	43.7	3.7
2000	48,949	164,232	44.6	3.4
2001	53,776	178,951	48.9	3.3
2002	59,417	182,444	49.7	3.1
2003	61,743	187,631	51.2	3.0
2004	61,710	201,706	55.1	3.3
2005	58,796	195,827	56.2	3.3
2006	59,194	192,331	47.3	3.2
2007	63,691	199,529	45.9	3.1
2008	69,630	207,085	48.7	3.0
2009	64,691	192,060	46.2	3.0

ALL ARRIVALS AT HOTELS, 1983 - 2009

