



H.M. GOVERNMENT OF GIBRALTAR

# AIR TRAFFIC SURVEY 2013



STATISTICS OFFICE





H.M. GOVERNMENT OF GIBRALTAR

# AIR TRAFFIC SURVEY 2013

STATISTICS OFFICE

H.M. Government of Gibraltar  
Statistics Office

Statistics Online

Copies of the Air Traffic Survey can be obtained, free of charge from the Statistics Office and are also available for download from the Gibraltar Government Website (<http://www.gibraltar.gov.gi/statistics/downloads>).

Historical data can be downloaded from previous copies of the report available online.

Comments and requests for general information should be addressed to:

Statistics Office  
99 Harbours Walk  
The New Harbours  
Or

E-mail: [statistics@gibraltar.gov.gi](mailto:statistics@gibraltar.gov.gi)

Tel: +350 20075515 / +350 20075490 / +350 20052541

Fax: +350 20051160

## PREFACE

The Statistics (Air Traffic Survey) Order 1971 requires that the Government Statistician prepare a report and summary of the findings of the Air Traffic Survey to be laid before the Gibraltar Parliament.

This report contains statistical data on air traffic operations between Gibraltar and other destinations for both scheduled and charter airlines for the years 1989 to 2013. It also includes details on the number of flights arriving in Gibraltar as well as some general data on commercial freight.

I must express my thanks to the Gibraltar Air Terminal Company Ltd and Borders and Coast Guard Agency for their continued co-operation in the conduct of this Survey.

GOVERNMENT STATISTICIAN



## DEFINITIONS

(a) Passenger Load Factor: 
$$\frac{\text{All seats used}}{\text{All seats offered (less in-transits)}} \times 100$$

(b) Revenue Load Factor: 
$$\frac{\text{All seats used by "paying" passengers}}{\text{All seats offered (less in-transits)}} \times 100$$

(c) Scheduled Flights: are regular flights planned according to a published timetable, including those supplementary thereto, and available for use by members of the public.

(d) Charter Flights: includes flights carrying 10 or more passengers, other than scheduled services and Ministry of Defence Charters.





# Contents

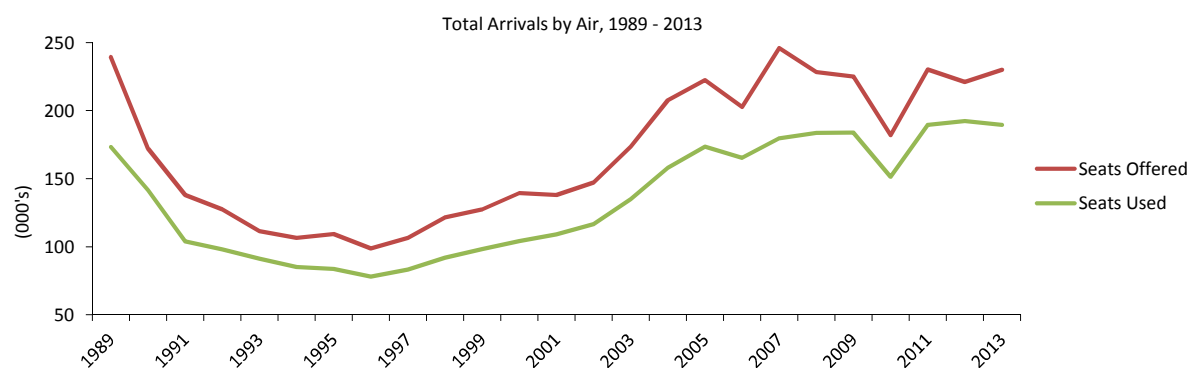
Tables	Page
<b>1. Arrivals and Departures by Air</b>	
1.01 Arrivals/Departures by Air, 1989 - 2013	1
<b>2. Arrivals by Air (Scheduled Flights)</b>	
2.01 Arrivals by Air from U.K., 1989 - 1992	2
2.02 Arrivals by Air from U.K., 1993 - 1996	2
2.03 Arrivals by Air from U.K., 1997 - 2000	3
2.04 Arrivals by Air from U.K., 2001 - 2004	3
2.05 Arrivals by Air from U.K., 2005 - 2007	4
2.06 Arrivals by Air from U.K., 2008 - 2010	4
2.07 Arrivals by Air from U.K., 2011 - 2013	5
2.08 Arrivals by Air from Spain, 2008 - 2010	6
<b>3. Departures by Air (Scheduled Flights)</b>	
3.01 Departures by Air to U.K., 1989 - 1991	7
3.02 Departures by Air to U.K., 1992 - 1994	7
3.03 Departures by Air to U.K., 1995 - 1997	8
3.04 Departures by Air to U.K., 1998 - 2000	8
3.05 Departures by Air to U.K., 2001 - 2003	9
3.06 Departures by Air to U.K., 2004 - 2006	9
3.07 Departures by Air to U.K., 2007 - 2008	10
3.08 Departures by Air to U.K., 2009 - 2010	10
3.09 Departures by Air to U.K., 2011 - 2013	11
3.10 Departures by Air to Spain, 2008 - 2010	12
<b>4. Arrivals by Air (Charter Flights)</b>	
4.01 Arrivals by Air, 1998 - 2000	13
4.02 Arrivals by Air, 2001 - 2003	13
4.03 Arrivals by Air, 2004 - 2006	14
4.04 Arrivals by Air, 2007, 2009 - 2010	14
<b>5. Departures by Air (Charter Flights)</b>	
5.01 Departures by Air, 1998 - 2000	15
5.02 Departures by Air, 2001 - 2003	15
5.03 Departures by Air, 2004 - 2006	16
5.04 Departures by Air, 2007, 2009 - 2010	16
<b>6. Aircraft Arrivals</b>	
6.01 Aircraft Arrivals, 2006 - 2013	17
<b>7. Commercial Freight</b>	
7.01 Set Down and Picked Up by Air, Gibraltar, 1989 - 2013	18



## 1: Arrivals and Departures by Air

**Table 1.01 Arrivals/Departures by Air, 1989 - 2013**

Year	Arrivals (000's)						Departures (000's)					
	Total		Scheduled		Charter		Total		Scheduled		Charter	
	Seats Offered	Seats Used	Seats Offered	Seats Used	Seats Offered	Seats Used	Seats Offered	Seats Used	Seats Offered	Seats Used	Seats Offered	Seats Used
1989	239.4	173.2	231.6	167.6	7.8	5.6	237.8	179.8	230.0	174.0	7.8	5.8
1990	172.0	141.5	165.8	136.8	6.2	4.7	175.1	148.5	168.9	143.8	6.2	4.7
1991	138.1	104.0	126.0	94.9	12.1	9.1	140.2	106.3	127.8	96.6	12.4	9.7
1992	127.4	98.1	127.0	97.7	0.4	0.4	128.2	101.0	127.7	100.5	0.5	0.4
1993	111.5	91.3	111.4	91.2	0.1	0.1	112.2	93.3	112.2	93.3	-	-
1994	106.4	85.2	106.4	85.2	-	-	107.1	86.9	207.2	86.9	-	-
1995	109.4	83.8	109.4	83.8	-	-	109.5	85.3	109.5	85.3	-	-
1996	98.7	78.1	98.7	78.1	-	-	98.1	78.2	98.1	78.2	-	-
1997	106.6	83.2	106.6	83.2	-	-	104.4	81.5	104.4	81.5	-	-
1998	121.5	92.0	120.4	91.0	1.2	1.1	120.2	91.0	119.0	90.1	1.2	0.9
1999	127.5	98.3	126.5	97.8	1.0	0.5	127.5	97.9	126.5	97.4	1.0	0.5
2000	139.4	104.3	138.6	103.7	0.8	0.5	138.9	107.1	138.1	106.6	0.8	0.5
2001	138.0	109.0	137.7	108.8	0.3	0.2	138.2	110.6	137.9	110.5	0.4	0.2
2002	147.2	116.6	146.3	115.7	0.9	0.9	147.0	114.8	146.1	114.0	0.9	0.9
2003	173.5	135.0	170.3	133.0	3.3	2.0	173.1	134.8	169.8	132.9	3.3	1.9
2004	207.6	157.9	206.4	157.0	1.2	0.9	207.6	158.3	206.4	157.3	1.2	0.9
2005	222.4	173.5	221.6	172.7	0.8	0.8	222.2	174.4	221.4	173.7	0.8	0.7
2006	202.7	165.2	202.0	164.6	0.7	0.6	202.6	166.0	201.9	165.4	0.7	0.6
2007	245.9	179.7	244.1	179.3	1.8	0.5	246.2	181.6	244.3	180.6	1.8	1.0
2008	228.3	183.7	228.3	183.7	-	-	228.3	187.3	228.3	187.3	-	-
2009	225.0	183.9	224.8	183.7	0.2	0.2	224.9	186.2	224.7	186.0	0.2	0.2
2010	181.9	151.5	181.0	151.0	0.8	0.5	182.0	152.7	181.2	152.1	0.8	0.6
2011	230.1	189.5	230.1	189.5	-	-	230.1	193.5	230.1	193.5	-	-
2012	221.0	192.2	221.0	192.2	-	-	221.2	193.6	221.2	193.6	-	-
2013	229.9	189.4	229.9	189.4	-	-	227.6	193.4	227.6	193.4	-	-



## Notes:

- (i) Charter flights as from 1998 include all destinations.
- (ii) Flights to and from Manchester re-commenced in September 2008.
- (iii) Flights to and from Heathrow re-commenced in October 2009.
- (iv) Flights to and from Gatwick were reduced from 13 to 7 a week as from October 2009.
- (v) Flights to and from Madrid re-commenced in April 2009 and ended in March 2010.
- (vi) Flights to and from Liverpool commenced in March 2011 and ended in October 2012.
- (vii) Flights to and from East Midlands commenced in March 2012 and ended in September 2012.
- (viii) Flights to and from Birmingham commenced in March 2013.
- (ix) No Charter operations were recorded during 1993-1997, 2008, 2011 - 2013.
- (x) The yearly totals have been rounded off from the actual figure and need not necessarily equal the sum of the rounded off sub-totals.

## 2: Arrivals by Air (Scheduled Flights)

**Table 2.01 Arrivals by Air from U.K. (Scheduled Flights), 1989 - 1992**

	Seats used (000's)				Seats offered (000's)				Load factor (%) <sup>(i)</sup>			
	1989	1990	1991	1992	1989	1990	1991	1992	1989	1990	1991	1992
January	9.7	10.0	7.3	6.2	18.0	15.1	12.2	10.0	53.9	66.3	59.3	61.2
February	10.4	10.6	6.8	6.2	14.4	13.1	10.4	8.7	72.4	81.1	65.9	71.0
March	13.6	12.9	7.4	7.7	17.8	14.8	9.2	9.2	76.3	87.1	81.3	83.0
April	11.9	11.6	6.7	9.1	17.6	14.2	7.9	12.8	67.7	82.2	84.1	71.1
May	14.9	12.2	7.5	9.3	19.3	13.8	8.3	12.5	77.2	88.1	90.7	74.1
June	14.7	12.1	7.9	9.6	19.8	13.7	9.5	12.0	74.3	88.3	83.5	79.8
July	20.3	13.9	10.8	11.5	24.8	14.6	12.3	12.5	81.8	95.5	88.1	92.2
August	18.5	12.5	9.7	9.8	24.4	14.3	11.9	12.6	75.8	87.2	81.3	77.4
September	16.5	12.3	9.0	6.9	22.2	13.9	11.5	8.3	74.3	88.5	78.1	82.9
October	16.3	11.5	8.6	9.0	22.5	14.5	11.7	11.9	72.1	79.2	74.0	75.6
November	9.9	8.4	6.7	6.6	15.5	11.6	11.1	8.8	63.7	72.2	60.4	74.7
December	10.9	8.8	6.5	6.0	15.3	12.1	10.2	7.5	71.5	72.3	63.4	79.5
<b>Total</b>	<b>167.6</b>	<b>136.8</b>	<b>94.9</b>	<b>97.7</b>	<b>231.6</b>	<b>165.6</b>	<b>126.0</b>	<b>127.0</b>	<b>72.4</b>	<b>82.5</b>	<b>75.3</b>	<b>76.9</b>

**Table 2.02 Arrivals by Air from U.K. (Scheduled Flights), 1993 - 1996**

	Seats used (000's)				Seats offered (000's)				Load factor (%) <sup>(i)</sup>			
	1993	1994	1995	1996	1993	1994	1995	1996	1993	1994	1995	1996
January	5.7	5.1	4.1	4.6	7.4	7.1	7.8	7.7	77.9	71.3	53.0	53.9
February	5.5	5.0	5.6	5.5	6.1	5.9	6.6	7.7	90.7	83.5	84.2	68.9
March	7.1	6.9	7.3	7.0	7.5	7.4	7.8	8.4	95.9	93.8	93.8	83.7
April	8.2	6.7	7.7	6.3	10.2	9.4	10.1	8.5	79.9	71.0	76.0	74.3
May	8.6	8.3	8.1	7.7	11.1	9.9	10.3	9.0	76.7	83.2	78.1	86.4
June	8.6	8.3	7.6	7.5	11.1	10.6	9.8	8.7	77.7	79.0	77.0	85.6
July	10.1	9.6	8.8	7.6	10.9	10.8	10.3	8.4	92.3	89.0	85.8	90.7
August	8.8	8.4	7.8	6.6	11.0	11.2	10.1	7.5	79.9	75.4	77.7	87.8
September	8.7	8.3	7.2	7.2	10.7	10.2	9.3	8.4	81.5	80.8	77.7	86.4
October	7.9	7.5	7.3	6.6	11.2	9.8	10.0	8.5	70.5	76.3	73.7	78.3
November	6.1	5.3	5.8	5.8	7.3	6.9	8.4	7.8	84.0	76.3	69.5	74.5
December	5.8	5.9	6.5	5.7	6.9	7.2	8.9	8.1	84.8	82.4	73.8	70.7
<b>Total</b>	<b>91.2</b>	<b>85.2</b>	<b>83.8</b>	<b>78.1</b>	<b>111.4</b>	<b>106.4</b>	<b>109.4</b>	<b>98.7</b>	<b>81.9</b>	<b>80.0</b>	<b>76.7</b>	<b>79.1</b>

**Notes:**

(i) Passenger load factors are calculated on the basis of actual figures and exclude passengers on connecting flights when applicable.

(ii) The total yearly figures have been rounded off from the actual figures and need not necessarily equal the sum of the rounded off monthly figures.

## 2: Arrivals by Air (Scheduled Flights)

**Table 2.03 Arrivals by Air from U.K. (Scheduled Flights), 1997 - 2000**

	Seats used (000's)				Seats offered (000's)				Load factor (%) <sup>(i)</sup>			
	1997	1998	1999	2000	1997	1998	1999	2000	1997	1998	1999	2000
January	4.6	4.8	5.2	4.6	7.9	9.4	8.4	11.1	57.8	51.1	62.5	41.5
February	5.2	6.0	6.3	6.2	6.3	9.0	7.4	9.8	83.0	66.4	84.5	63.6
March	6.1	7.6	8.1	8.7	6.9	9.8	8.8	10.7	87.4	78.1	91.4	81.3
April	5.4	7.8	7.8	9.1	6.6	10.0	9.8	10.4	82.3	77.9	80.4	87.2
May	8.6	9.0	10.0	10.1	9.9	11.4	12.5	13.4	86.4	79.0	80.3	75.9
June	7.6	8.0	9.8	9.7	9.4	10.9	11.8	12.4	80.2	73.6	82.7	78.3
July	8.6	9.3	10.7	10.8	9.5	10.6	12.4	13.4	90.8	87.3	85.8	80.8
August	8.3	9.2	9.2	10.1	10.0	11.2	11.6	12.9	83.4	82.2	79.2	78.1
September	8.1	8.4	8.9	10.5	10.7	10.7	11.8	12.7	75.6	78.0	75.6	82.5
October	8.5	8.2	8.3	10.0	10.4	11.2	11.7	13.4	81.1	73.1	70.3	74.6
November	5.9	6.5	6.5	7.0	9.2	8.4	9.7	9.1	63.7	78.0	67.0	76.2
December	6.4	6.3	7.1	7.0	9.8	7.9	10.6	9.3	65.8	79.7	66.9	75.0
<b>Total</b>	<b>83.2</b>	<b>91.0</b>	<b>97.8</b>	<b>103.7</b>	<b>106.6</b>	<b>120.4</b>	<b>126.5</b>	<b>138.6</b>	<b>78.0</b>	<b>75.6</b>	<b>77.3</b>	<b>74.9</b>

**Table 2.04 Arrivals by Air from U.K. (Scheduled Flights), 2001 - 2004**

	Seats used (000's)				Seats offered (000's)				Load factor (%) <sup>(i)</sup>			
	2001	2002	2003	2004	2001	2002	2003	2004	2001	2002	2003	2004
January	5.4	5.5	6.5	7.5	9.4	9.3	11.4	12.4	57.3	59.6	57.4	60.0
February	6.9	7.6	7.9	9.2	8.3	8.9	9.3	11.9	82.7	85.9	84.8	77.8
March	8.6	10.2	10.3	12.4	9.8	11.7	13.2	15.4	87.9	87.4	78.2	80.7
April	9.0	8.0	11.0	12.9	10.6	10.7	13.2	16.7	84.5	75.2	82.9	77.0
May	11.1	10.4	13.0	14.0	13.2	14.1	16.1	20.2	83.6	73.8	80.9	69.3
June	11.0	10.4	12.2	14.3	12.8	13.3	15.6	19.5	85.7	78.3	78.6	73.4
July	11.7	13.2	14.6	17.5	13.5	14.6	16.1	20.1	86.6	90.4	90.6	87.2
August	10.5	12.2	13.2	16.2	13.4	14.3	16.1	20.2	78.3	85.5	81.8	80.4
September	10.2	11.4	12.0	15.5	12.8	13.6	15.5	19.6	79.5	83.6	77.2	79.0
October	9.5	11.0	12.3	14.3	13.4	14.4	15.9	20.3	70.9	76.4	77.5	70.6
November	7.5	8.0	10.2	11.7	10.6	10.7	14.1	15.2	71.1	74.7	71.9	76.8
December	7.5	7.6	9.8	11.6	9.7	10.7	13.8	15.0	76.5	71.4	71.3	77.0
<b>Total</b>	<b>108.8</b>	<b>115.7</b>	<b>133.0</b>	<b>157.0</b>	<b>137.7</b>	<b>146.3</b>	<b>170.3</b>	<b>206.4</b>	<b>79.0</b>	<b>79.1</b>	<b>78.1</b>	<b>76.1</b>

**Notes:**

(i) Passenger load factors are calculated on the basis of actual figures and exclude passengers on connecting flights when applicable.

(ii) The total yearly figures have been rounded off from the actual figures and need not necessarily equal the sum of the rounded off monthly figures.

## 2: Arrivals by Air (Scheduled Flights)

**Table 2.05 Arrivals by Air from U.K. (Scheduled Flights), 2005 - 2007**

	Seats used (000's)			Seats offered (000's)			Load factor (%) <sup>(i)</sup>		
	2005	2006	2007	2005	2006	2007	2005	2006	2007
January	10.0	9.7	7.8	15.9	15.5	11.4	62.7	62.7	68.7
February	10.5	10.7	7.8	14.4	14.8	10.8	73.2	72.5	72.3
March	13.4	14.6	9.6	16.6	17.6	12.7	80.7	83.3	75.4
April	13.9	15.2	11.1	17.6	17.8	14.0	78.9	85.2	79.6
May	16.0	17.1	13.7	21.1	19.3	16.8	75.8	88.6	81.1
June	16.2	16.8	13.4	20.4	19.8	16.4	79.7	84.9	81.7
July	18.4	17.9	15.5	21.1	19.6	16.9	87.4	91.2	91.7
August	18.2	14.4	13.4	21.2	17.4	16.4	85.8	82.9	81.7
September	17.0	13.9	14.1	20.5	17.6	16.4	83.3	79.0	85.9
October	16.4	13.8	14.1	20.9	17.4	17.0	78.4	79.5	82.5
November	11.5	9.8	11.2	16.7	11.7	13.2	69.0	83.7	84.7
December	11.1	10.7	10.5	15.3	13.6	12.7	72.7	78.8	82.6
<b>Total</b>	<b>172.7</b>	<b>164.6</b>	<b>142.1</b>	<b>221.6</b>	<b>202.0</b>	<b>174.8</b>	<b>77.9</b>	<b>81.5</b>	<b>81.3</b>

**Table 2.06 Arrivals by Air from U.K. (Scheduled Flights), 2008 - 2010**

	Seats used (000's)			Seats offered (000's)			Load factor (%) <sup>(i)</sup>		
	2008	2009	2010	2008	2009	2010	2008	2009	2010
January	9.0	10.9	9.0	13.0	15.6	13.0	69.4	69.8	69.1
February	8.6	12.2	9.5	10.4	15.5	11.6	83.2	79.1	81.5
March	11.3	16.1	12.1	12.3	18.7	14.0	91.2	86.5	86.3
April	15.1	16.3	9.7	18.3	19.3	11.5	82.8	84.7	84.4
May	16.8	17.0	13.4	19.4	18.8	15.7	86.8	90.3	85.0
June	15.8	17.0	14.2	18.9	18.5	15.7	83.4	92.0	90.6
July	19.4	17.7	15.1	21.4	19.1	16.2	90.6	92.9	93.3
August	18.1	16.3	14.9	21.3	18.8	16.2	85.2	86.8	91.6
September	17.7	15.9	14.4	22.2	18.4	16.4	79.7	86.3	87.6
October	18.1	15.6	15.1	22.2	18.4	18.2	81.1	84.7	83.0
November	13.9	11.1	11.9	19.4	14.1	15.6	71.7	79.1	76.2
December	15.2	10.6	10.9	18.7	13.1	13.7	81.2	80.8	79.2
<b>Total</b>	<b>179.0</b>	<b>176.8</b>	<b>150.1</b>	<b>217.5</b>	<b>208.1</b>	<b>178.0</b>	<b>82.3</b>	<b>84.9</b>	<b>84.3</b>

**Notes:**

(i) Passenger load factors are calculated on the basis of actual figures and exclude passengers on connecting flights when applicable.

(ii) Flights to and from Manchester re-commenced in September 2008.

(iii) Flights to and from Heathrow re-commenced in October 2009.

(iv) Flights to and from Gatwick were reduced from 13 to 7 a week as from October 2009.

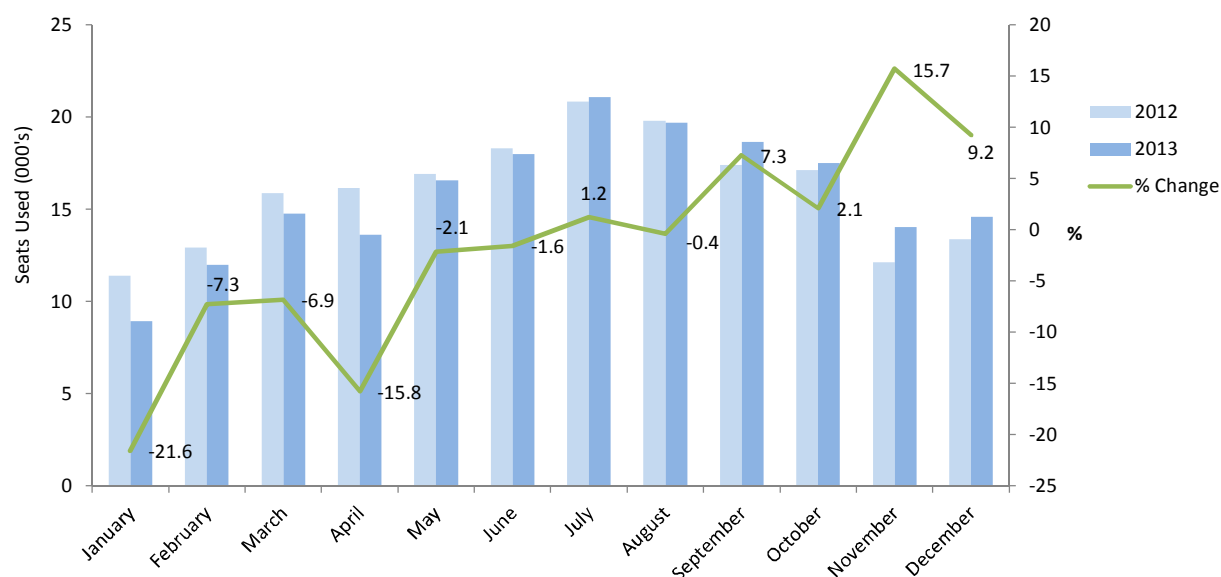
(v) The total yearly figures have been rounded off from the actual figures and need not necessarily equal the sum of the rounded off monthly figures.

## 2: Arrivals by Air (Scheduled Flights)

**Table 2.07 Arrivals by Air from U.K. (Scheduled Flights), 2011 - 2013**

	Seats used (000's)			Seats offered (000's)			Load factor (%) <sup>(i)</sup>		
	2011	2012	2013	2011	2012	2013	2011	2012	2013
January	9.1	11.4	8.9	14.0	15.8	13.5	65.4	72.3	66.1
February	10.1	12.9	12.0	13.4	15.0	13.8	75.0	86.4	86.6
March	12.8	15.9	14.8	16.1	17.0	16.3	79.8	93.4	90.6
April	15.3	16.2	13.6	18.5	20.2	17.4	83.0	80.1	78.1
May	17.1	16.9	16.6	21.3	19.1	19.5	80.5	88.8	85.0
June	18.2	18.3	18.0	22.3	20.1	20.7	81.8	90.9	87.1
July	21.5	20.8	21.1	23.9	21.9	23.0	89.9	95.3	91.6
August	21.5	19.8	19.7	24.1	21.7	22.7	89.2	91.1	86.7
September	18.8	17.4	18.6	22.4	19.7	22.8	84.0	88.4	81.7
October	17.1	17.1	17.5	20.8	19.7	22.3	82.4	87.0	78.4
November	13.8	12.1	14.0	16.8	15.0	19.0	82.2	80.6	73.9
December	14.1	13.4	14.6	16.7	16.0	18.9	84.5	83.7	77.4
<b>Total</b>	<b>189.5</b>	<b>192.2</b>	<b>189.4</b>	<b>230.1</b>	<b>221.0</b>	<b>229.9</b>	<b>82.4</b>	<b>86.9</b>	<b>82.4</b>

Arrivals by Air from U.K. (Scheduled Flights), Seats Used, 2012 - 2013

**Notes:**

(i) Passenger load factors are calculated on the basis of actual figures and exclude passengers on connecting flights when applicable.

(ii) Flights to and from Liverpool commenced in March 2011 and ended in October 2012.

(iii) Flights to and from East Midlands commenced in March 2012 and ended in September 2012.

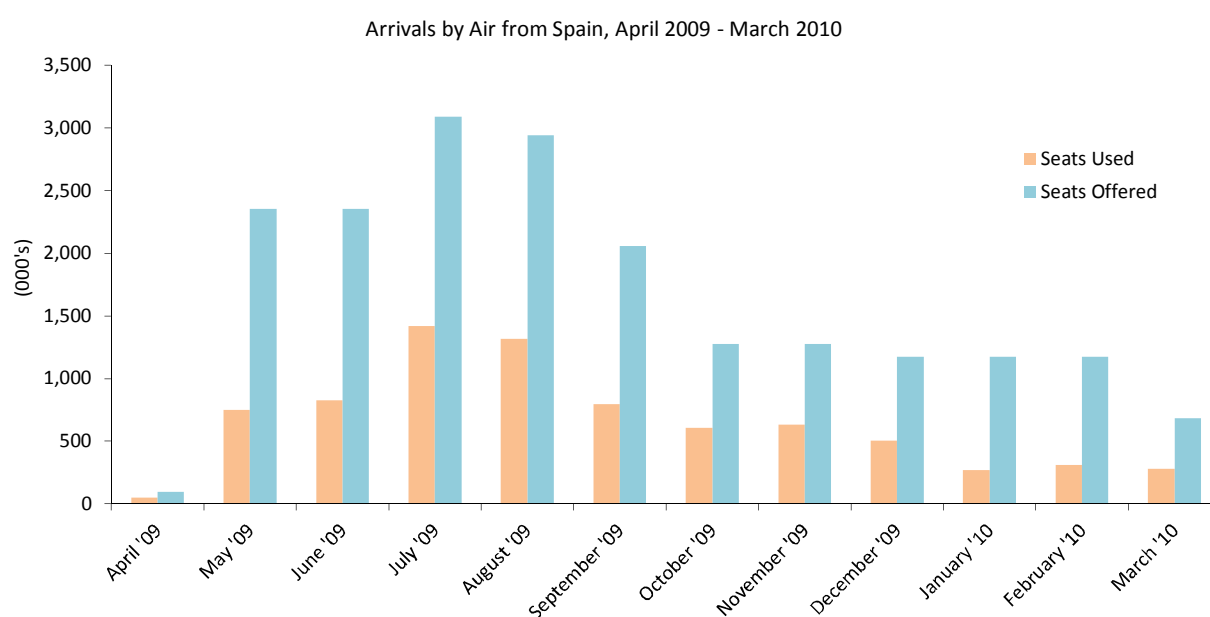
(iv) Flights to and from Birmingham commenced in March 2013.

(v) The total yearly figures have been rounded off from the actual figures and need not necessarily equal the sum of the rounded off monthly figures.

## 2: Arrivals by Air (Scheduled Flights)

**Table 2.08 Arrivals by Air from Spain (Scheduled Flights), 2008 - 2010**

	Seats used (000's)			Seats offered (000's)			Load factor (%) <sup>(i)</sup>		
	2008	2009	2010	2008	2009	2010	2008	2009	2010
January	0.3	-	0.3	1.1	-	1.2	29.6	-	23.0
February	0.5	-	0.3	1.3	-	1.2	36.0	-	26.4
March	0.5	-	0.3	1.3	-	0.7	42.3	-	40.5
April	0.3	0.1	-	1.1	0.1	-	26.6	51.0	-
May	0.4	0.7	-	1.3	2.4	-	32.5	31.8	-
June	0.5	0.8	-	1.0	2.4	-	53.5	35.1	-
July	0.7	1.4	-	1.1	3.1	-	63.4	45.9	-
August	0.8	1.3	-	1.4	2.9	-	57.0	44.8	-
September	0.6	0.8	-	1.1	2.1	-	49.7	38.8	-
October	-	0.6	-	-	1.3	-	-	47.8	-
November	-	0.6	-	-	1.3	-	-	49.6	-
December	-	0.5	-	-	1.2	-	-	42.9	-
<b>Total</b>	<b>4.7</b>	<b>6.9</b>	<b>0.9</b>	<b>10.7</b>	<b>16.6</b>	<b>3.0</b>	<b>43.3</b>	<b>41.5</b>	<b>28.3</b>

**Notes:**

(i) Passenger load factors are calculated on the basis of actual figures and exclude passengers on connecting flights when applicable.

(ii) Flights to and from Barcelona commenced in July 2009 and ended in September 2009.

(iii) Flights to and from Madrid recommenced in April 2009 and ended in March 2010.

(iv) The total yearly figures have been rounded off from the actual figures and need not necessarily equal the sum of the rounded off monthly figures.



## 3: Departures by Air (Scheduled Flights)

Table 3.01 Departures by Air to U.K. (Scheduled Flights), 1989 - 1991

	Seats used (000's)			Seats offered (000's)			Load factor (%)					
	1989	1990	1991	1989	1990	1991	1989		1990		1991	
							(i)	(ii)	(i)	(ii)	(i)	(ii)
January	12.2	11.4	7.5	18.0	15.4	12.1	67.7	(66.4)	74.3	(73.0)	62.1	(60.6)
February	10.2	10.5	6.7	14.4	13.3	10.3	70.9	(69.3)	79.1	(77.2)	65.4	(63.2)
March	11.9	12.3	6.2	17.8	14.4	8.7	67.1	(65.0)	85.0	(83.2)	71.3	(69.1)
April	13.6	13.0	7.8	17.5	14.6	8.6	77.3	(76.3)	89.2	(87.9)	90.2	(87.6)
May	13.3	11.7	6.9	18.7	14.2	8.2	70.7	(69.4)	82.2	(80.6)	83.6	(81.0)
June	15.9	13.2	7.9	19.5	14.1	9.8	81.6	(80.5)	93.3	(92.0)	80.5	(77.9)
July	17.1	12.5	9.2	24.5	14.6	12.4	70.0	(69.0)	86.0	(84.7)	73.8	(71.2)
August	20.9	13.7	11.0	24.5	15.2	12.3	85.1	(84.4)	90.5	(89.8)	89.5	(87.0)
September	18.4	13.4	9.9	22.0	14.3	12.2	83.5	(82.5)	93.2	(91.7)	81.7	(78.7)
October	18.3	13.8	10.1	22.5	14.7	12.1	81.5	(80.1)	93.5	(92.2)	83.3	(81.5)
November	11.9	9.6	7.3	15.5	12.0	10.9	77.2	(75.3)	80.5	(77.5)	67.0	(65.4)
December	10.2	8.7	6.1	15.0	12.1	10.2	68.2	(67.1)	71.8	(70.2)	59.7	(58.5)
<b>Total</b>	<b>174.0</b>	<b>143.8</b>	<b>96.6</b>	<b>230.0</b>	<b>168.9</b>	<b>127.8</b>	<b>75.7</b>	<b>(70.5)</b>	<b>85.1</b>	<b>(83.6)</b>	<b>75.6</b>	<b>(73.3)</b>

Table 3.02 Departures by Air to U.K. (Scheduled Flights), 1992 - 1994

	Seats used (000's)			Seats offered (000's)			Load factor (%)					
	1992	1993	1994	1992	1993	1994	1992		1993		1994	
							(i)	(ii)	(i)	(ii)	(i)	(ii)
January	6.7	6.1	5.8	10.2	7.6	7.1	65.9	(64.8)	80.5	(79.3)	81.9	(80.8)
February	6.2	5.4	5.0	8.6	6.4	6.2	72.5	(70.2)	83.8	(82.9)	81.7	(80.1)
March	7.0	6.7	5.5	9.2	7.8	7.5	76.0	(73.8)	86.1	(84.7)	74.1	(72.9)
April	9.5	8.3	7.6	12.8	10.0	9.3	74.3	(73.2)	82.3	(81.0)	81.9	(81.2)
May	8.6	7.9	7.6	12.6	11.1	10.1	68.1	(66.8)	71.3	(69.8)	76.3	(75.2)
June	9.8	9.4	8.7	12.2	11.1	10.4	80.4	(79.1)	84.1	(82.9)	84.8	(83.7)
July	9.8	8.7	8.4	12.5	11.3	10.9	78.5	(76.7)	77.5	(76.7)	77.0	(77.5)
August	11.5	10.0	9.7	12.8	10.9	10.9	89.7	(88.8)	91.4	(90.5)	89.0	(88.3)
September	7.6	9.7	9.3	8.2	10.5	10.2	91.9	(90.2)	92.2	(91.0)	91.8	(91.2)
October	10.5	9.5	8.9	11.9	11.1	10.2	87.7	(85.9)	86.0	(85.0)	88.3	(87.5)
November	7.8	6.5	5.6	9.0	7.3	6.8	86.0	(84.2)	88.8	(87.3)	83.3	(82.4)
December	5.6	5.1	4.8	7.6	6.9	7.2	73.8	(72.5)	73.2	(72.4)	67.3	(66.9)
<b>Total</b>	<b>100.5</b>	<b>93.3</b>	<b>86.9</b>	<b>127.7</b>	<b>112.2</b>	<b>107.1</b>	<b>78.7</b>	<b>(77.2)</b>	<b>83.2</b>	<b>(82.0)</b>	<b>81.2</b>	<b>(80.3)</b>

## Notes:

(i) Passenger load factors are calculated on the basis of actual figures and exclude passengers on connecting flights when applicable.

(ii) Revenue load factors are calculated in the same way as passenger load factors except they exclude non-paying passengers.

(iii) The total yearly figures have been rounded off from the actual figures and need not necessarily equal the sum of the rounded off monthly figures.

## 3: Departures by Air (Scheduled Flights)

**Table 3.03 Departures by Air to U.K. (Scheduled Flights), 1995 - 1997**

	Seats used (000's)			Seats offered (000's)			Load factor (%)					
	1995	1996	1997	1995	1996	1997	1995		1996		1997	
							(i)	(ii)	(i)	(ii)	(i)	(ii)
January	5.5	5.3	4.7	7.8	7.7	6.8	70.8	(70.3)	69.4	(69.0)	68.5	(67.4)
February	5.2	5.6	5.1	6.9	8.2	6.4	75.1	(74.4)	68.1	(67.6)	79.4	(78.3)
March	6.6	6.3	5.2	7.7	8.1	6.8	85.1	(84.6)	77.1	(76.4)	76.4	(75.5)
April	8.3	7.0	6.1	10.3	8.7	6.7	80.5	(80.3)	81.0	(80.7)	90.1	(89.7)
May	7.3	7.0	7.7	10.4	8.7	9.6	69.8	(69.4)	79.9	(79.5)	79.8	(79.2)
June	8.2	8.1	7.9	9.9	9.1	9.5	82.5	(82.0)	89.5	(89.1)	83.2	(83.0)
July	7.9	6.8	7.5	10.3	8.6	9.7	76.5	(76.0)	79.1	(79.0)	77.0	(76.7)
August	8.5	6.8	8.7	10.3	7.6	9.5	82.8	(82.4)	89.7	(89.5)	91.7	(91.4)
September	8.4	8.0	8.8	9.6	8.5	10.5	87.6	(87.0)	93.5	(93.2)	83.8	(83.5)
October	8.3	7.3	8.6	9.9	8.3	9.6	83.0	(82.4)	88.6	(88.2)	90.0	(89.6)
November	6.3	5.9	6.5	8.5	7.6	9.2	73.8	(73.1)	77.7	(77.1)	70.3	(70.0)
December	4.8	4.1	4.7	7.9	7.0	10.1	61.5	(60.8)	58.8	(58.4)	46.3	(46.1)
<b>Total</b>	<b>85.3</b>	<b>78.2</b>	<b>81.5</b>	<b>109.5</b>	<b>98.1</b>	<b>104.4</b>	<b>77.8</b>	<b>(77.3)</b>	<b>79.6</b>	<b>(79.0)</b>	<b>78.1</b>	<b>(77.6)</b>

**Table 3.04 Departures by Air to U.K. (Scheduled Flights), 1998 - 2000**

	Seats used (000's)			Seats offered (000's)			Load factor (%)					
	1998	1999	2000	1998	1999	2000	1998		1999		2000	
							(i)	(ii)	(i)	(ii)	(i)	(ii)
January	6.0	6.3	6.5	9.5	8.5	11.1	63.1	(62.7)	74.1	(73.9)	58.8	(58.7)
February	5.3	5.7	6.0	8.7	7.5	9.8	60.7	(60.2)	75.1	(74.3)	61.5	(61.4)
March	6.7	7.0	8.0	9.9	8.5	10.6	67.9	(67.9)	82.8	(82.7)	75.2	(74.9)
April	8.2	8.7	9.1	10.0	9.8	10.1	81.9	(81.7)	89.0	(88.5)	89.4	(89.3)
May	8.0	8.9	9.9	11.2	12.5	13.3	71.3	(70.9)	71.0	(71.0)	74.5	(74.5)
June	8.1	10.0	10.5	10.8	11.6	12.4	74.6	(74.2)	86.3	(86.3)	84.9	(84.8)
July	7.7	9.4	9.8	10.3	12.5	13.4	74.5	(74.3)	75.7	(75.7)	73.0	(72.9)
August	9.9	9.6	10.6	11.1	11.4	12.7	89.5	(89.4)	84.7	(84.7)	83.6	(83.5)
September	9.2	10.2	11.7	10.4	11.8	12.8	88.5	(88.4)	86.3	(86.3)	91.4	(91.2)
October	8.9	9.0	11.1	11.0	11.8	13.2	80.5	(80.3)	76.4	(76.4)	84.2	(84.1)
November	7.1	7.4	7.5	8.3	10.0	9.2	84.9	(84.4)	74.4	(74.4)	82.1	(82.0)
December	5.0	5.1	5.7	7.6	10.6	9.3	66.2	(65.5)	48.0	(47.9)	61.3	(60.8)
<b>Total</b>	<b>90.1</b>	<b>97.4</b>	<b>106.6</b>	<b>119.0</b>	<b>126.5</b>	<b>138.1</b>	<b>75.7</b>	<b>(75.4)</b>	<b>77.0</b>	<b>(76.9)</b>	<b>77.2</b>	<b>(77.1)</b>

**Notes:**

(i) Passenger load factors are calculated on the basis of actual figures and exclude passengers on connecting flights when applicable.

(ii) Revenue load factors are calculated in the same way as passenger load factors except they exclude non-paying passengers.

(iii) The total yearly figures have been rounded off from the actual figures and need not necessarily equal the sum of the rounded off monthly figures.

## 3: Departures by Air (Scheduled Flights)

Table 3.05 Departures by Air to U.K. (Scheduled Flights), 2001 - 2003

	Seats used (000's)			Seats offered (000's)			Load factor (%)					
	2001	2002	2003	2001	2002	2003	2001		2002		2003	
							(i)	(ii)	(i)	(ii)	(i)	(ii)
January	6.6	6.4	7.5	9.4	9.5	11.4	70.2	(70.2)	67.7	(67.7)	66.2	(66.2)
February	6.6	7.0	7.3	8.4	8.9	9.3	78.9	(78.9)	78.4	(78.4)	77.8	(77.8)
March	7.9	8.4	10.1	9.8	11.1	13.2	81.0	(81.0)	75.7	(75.7)	76.6	(76.6)
April	9.4	9.3	10.5	10.6	10.7	12.9	87.9	(87.9)	86.5	(86.5)	81.1	(81.1)
May	10.2	9.4	12.0	13.3	14.1	16.1	76.7	(76.7)	66.5	(66.5)	74.7	(74.6)
June	11.0	10.5	12.8	12.9	13.3	15.4	85.7	(85.7)	79.1	(79.1)	83.3	(83.3)
July	10.3	10.8	12.0	13.5	14.8	16.1	76.0	(76.0)	72.9	(72.9)	74.7	(74.6)
August	11.5	13.1	14.6	13.4	14.5	16.1	85.4	(85.4)	90.5	(90.5)	91.0	(91.0)
September	11.1	12.6	13.7	12.8	13.6	15.5	86.6	(86.6)	92.7	(92.7)	88.1	(88.1)
October	11.3	11.7	12.9	13.5	14.4	15.9	83.9	(83.9)	81.3	(81.3)	81.0	(80.9)
November	8.5	8.6	10.9	10.7	10.7	14.1	79.9	(79.9)	80.6	(80.6)	77.4	(77.4)
December	6.0	6.2	8.5	9.5	10.5	13.8	63.2	(63.2)	58.8	(58.8)	61.6	(61.6)
<b>Total</b>	<b>110.5</b>	<b>114.0</b>	<b>132.9</b>	<b>137.9</b>	<b>146.1</b>	<b>169.8</b>	<b>80.1</b>	<b>(80.1)</b>	<b>78.0</b>	<b>(78.0)</b>	<b>78.2</b>	<b>(78.2)</b>

Table 3.06 Departures by Air to U.K. (Scheduled Flights), 2004 - 2006

	Seats used (000's)			Seats offered (000's)			Load factor (%)					
	2004	2005	2006	2004	2005	2006	2004		2005		2006	
							(i)	(ii)	(i)	(ii)	(i)	(ii)
January	8.7	11.9	10.5	12.4	15.8	15.7	70.0	(69.9)	75.4	(75.4)	66.6	(66.6)
February	9.1	10.2	10.6	11.9	14.4	14.8	76.2	(76.2)	70.8	(70.8)	72.1	(72.1)
March	11.6	11.8	13.2	15.4	16.6	17.6	75.3	(75.3)	71.1	(71.1)	75.5	(75.5)
April	13.0	14.4	15.5	16.7	17.6	17.8	77.7	(77.7)	81.9	(81.9)	87.0	(87.0)
May	12.3	14.4	15.8	20.2	21.1	19.3	61.0	(61.0)	68.8	(68.8)	82.1	(82.1)
June	15.1	17.2	17.7	19.5	20.5	19.8	77.6	(77.6)	83.7	(83.7)	89.3	(89.3)
July	14.9	16.3	16.3	20.0	21.1	19.6	74.2	(74.2)	77.5	(77.5)	83.1	(83.1)
August	17.9	18.8	15.9	20.2	21.2	17.6	88.5	(88.5)	88.7	(88.7)	90.4	(90.4)
September	17.1	19.0	15.4	19.6	20.4	17.2	87.2	(87.2)	92.8	(92.8)	89.5	(89.5)
October	15.4	17.5	14.5	20.3	20.9	17.4	75.8	(75.8)	83.8	(83.8)	83.7	(83.7)
November	12.6	12.6	10.5	15.2	16.6	11.6	83.1	(83.1)	75.8	(75.8)	90.0	(90.0)
December	9.8	9.6	9.5	15.0	15.1	13.6	64.9	(64.9)	63.3	(63.3)	70.0	(70.0)
<b>Total</b>	<b>157.3</b>	<b>173.7</b>	<b>165.4</b>	<b>206.4</b>	<b>221.4</b>	<b>201.9</b>	<b>76.2</b>	<b>(76.2)</b>	<b>78.5</b>	<b>(78.5)</b>	<b>81.9</b>	<b>(81.9)</b>

## Notes:

(i) Passenger load factors are calculated on the basis of actual figures and exclude passengers on connecting flights when applicable.

(ii) Revenue load factors are calculated in the same way as passenger load factors except they exclude non-paying passengers.

(iii) The total yearly figures have been rounded off from the actual figures and need not necessarily equal the sum of the rounded off monthly figures.

## 3: Departures by Air (Scheduled Flights)

**Table 3.07 Departures by Air to U.K. (Scheduled Flights), 2007 - 2008**

	Seats used (000's)		Seats offered (000's)		Load factor (%) <sup>(i)</sup>	
	2007	2008	2007	2008	2007	2008
January	8.6	9.7	11.4	13.0	75.6	74.5
February	7.9	8.5	10.8	10.4	73.0	81.7
March	8.9	10.3	12.7	12.3	69.8	83.4
April	10.9	15.8	13.9	18.3	78.2	86.3
May	12.7	16.2	17.0	19.4	74.8	83.3
June	14.0	16.4	16.2	18.8	86.1	87.2
July	14.1	18.0	16.9	21.5	83.7	83.7
August	14.0	19.6	16.2	21.3	86.1	91.8
September	15.3	20.0	16.4	22.3	93.4	89.8
October	14.9	18.9	17.2	22.3	86.7	84.5
November	12.0	15.8	13.2	19.4	91.1	81.2
December	9.4	13.5	12.7	18.5	73.6	72.9
<b>Total</b>	<b>142.7</b>	<b>182.5</b>	<b>174.7</b>	<b>217.6</b>	<b>81.7</b>	<b>83.9</b>

**Table 3.08 Departures by Air to U.K. (Scheduled Flights), 2009 - 2010**

	Seats used (000's)		Seats offered (000's)		Load factor (%) <sup>(i)</sup>	
	2009	2010	2009	2010	2009	2010
January	12.5	9.4	15.6	13.0	80.0	71.8
February	12.2	9.1	15.4	11.6	79.1	78.9
March	15.0	10.9	18.7	14.0	80.3	77.5
April	16.6	9.1	19.3	11.5	85.9	77.7
May	16.5	13.0	18.8	15.7	87.7	82.9
June	17.0	14.2	18.5	15.7	91.9	90.6
July	16.6	14.4	19.0	16.2	87.5	89.4
August	17.4	15.5	18.8	16.2	92.7	95.3
September	17.3	15.6	18.4	16.4	93.9	94.7
October	16.4	16.5	18.4	18.2	89.1	90.8
November	12.0	13.2	14.1	15.6	85.2	84.1
December	9.7	10.3	13.1	13.7	74.1	74.9
<b>Total</b>	<b>179.1</b>	<b>151.1</b>	<b>208.1</b>	<b>178.0</b>	<b>86.1</b>	<b>84.8</b>

**Notes:**

(i) Passenger load factors are calculated on the basis of actual figures and exclude passengers on connecting flights when applicable.

(ii) Flights to and from Manchester re-commenced in September 2008.

(iii) Flights to and from Heathrow re-commenced in October 2009.

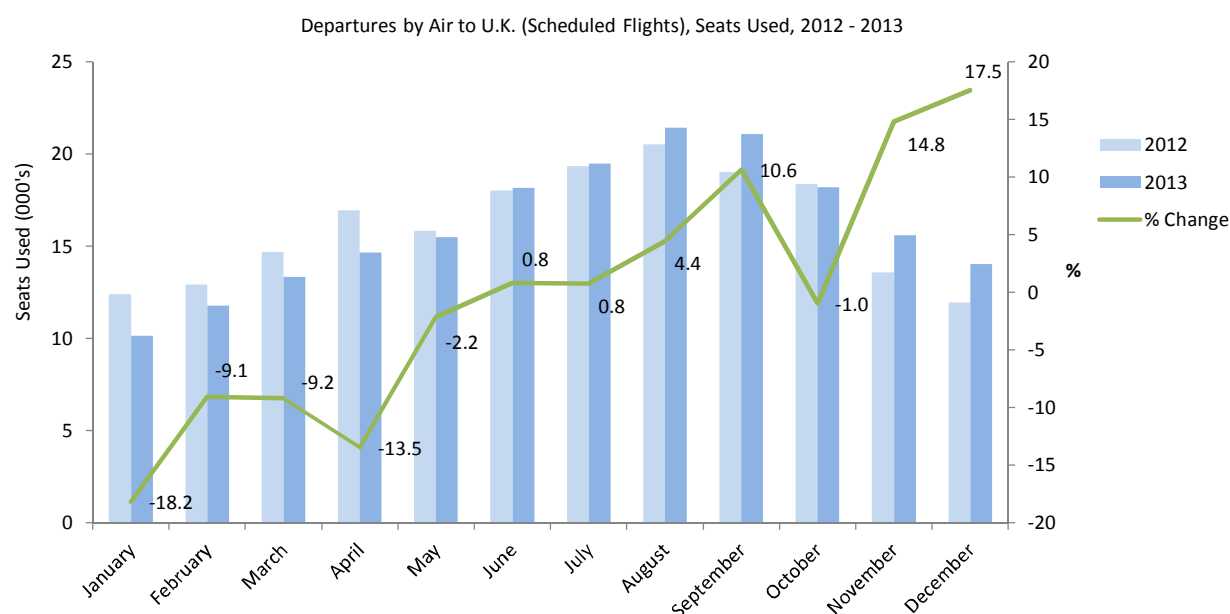
(iv) Flights to and from Gatwick were reduced from 13 to 7 a week as from October 2009.

(v) The total yearly figures have been rounded off from the actual figures and need not necessarily equal the sum of the rounded off monthly figures.

## 3: Departures by Air (Scheduled Flights)

**Table 3.09 Departures by Air to U.K. (Scheduled Flights), 2011 - 2013**

	Seats used (000's)			Seats offered (000's)			Load factor (%) <sup>(i)</sup>		
	2011	2012	2013	2011	2012	2013	2011	2012	2013
January	10.3	12.4	10.1	14.0	15.8	13.5	73.4	78.3	74.9
February	10.1	12.9	11.8	13.4	15.0	13.8	75.3	86.3	84.9
March	12.5	14.7	13.3	16.1	17.1	16.3	77.9	86.1	81.7
April	14.8	16.9	14.7	18.5	20.2	17.4	80.3	83.8	84.0
May	16.4	15.8	15.5	21.3	19.0	19.5	77.2	83.2	79.6
June	18.9	18.0	18.2	22.3	20.1	20.7	84.7	89.6	87.7
July	19.6	19.3	19.5	23.9	21.9	22.8	81.9	88.4	85.3
August	22.1	20.5	21.4	24.1	21.8	22.8	92.3	94.3	93.9
September	21.4	19.0	21.1	22.4	19.7	22.8	95.5	96.9	92.4
October	18.8	18.4	18.2	20.8	19.7	22.3	90.3	93.4	81.5
November	15.5	13.6	15.6	16.8	15.0	19.0	91.8	90.4	82.2
December	13.1	11.9	14.0	16.7	16.0	16.5	78.5	74.5	85.0
<b>Total</b>	<b>193.5</b>	<b>193.6</b>	<b>193.4</b>	<b>230.1</b>	<b>221.2</b>	<b>227.6</b>	<b>84.1</b>	<b>87.5</b>	<b>85.0</b>

**Notes:**

(i) Passenger load factors are calculated on the basis of actual figures and exclude passengers on connecting flights when applicable.

(ii) Flights to and from Liverpool commenced in March 2011 and ended in October 2012.

(iii) Flights to and from East Midlands commenced in March 2012 and ended in September 2012.

(iv) Flights to and from Birmingham commenced in March 2013.

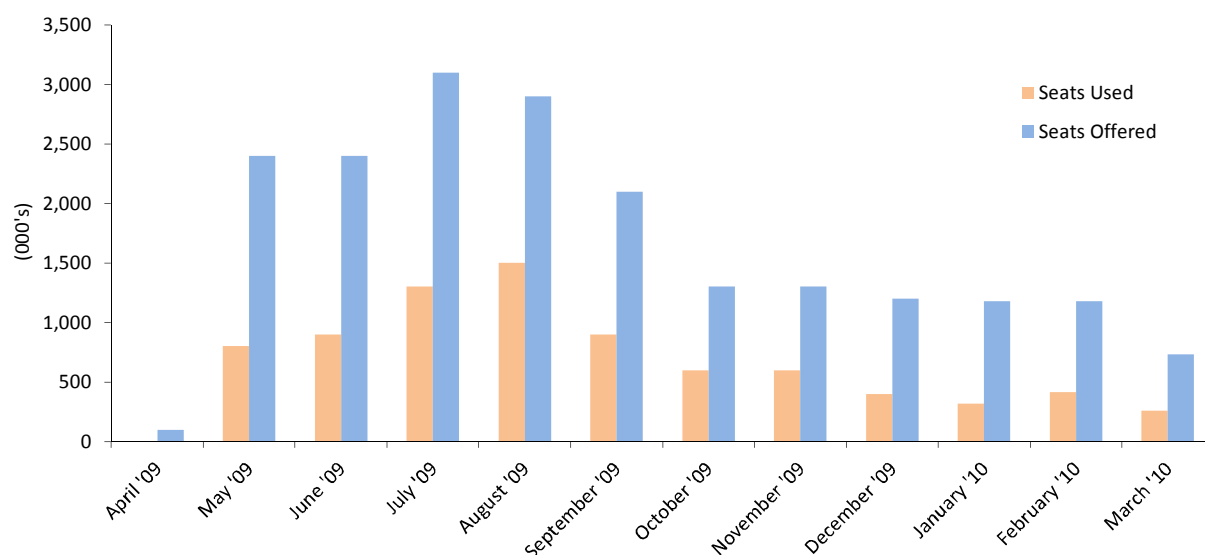
(v) The total yearly figures have been rounded off from the actual figures and need not necessarily equal the sum of the rounded off monthly figures.

## 3: Departures by Air (Scheduled Flights)

**Table 3.10 Departures by Air to Spain (Scheduled Flights), 2008 - 2010**

	Seats used (000's)			Seats offered (000's)			Load factor (%) <sup>(i)</sup>		
	2008	2009	2010	2008	2009	2010	2008	2009	2010
January	0.4	-	0.3	1.1	-	1.2	35.7	-	27.0
February	0.4	-	0.4	1.3	-	1.2	34.5	-	35.5
March	0.6	-	0.3	1.3	-	0.7	47.2	-	35.5
April	0.3	-	-	1.1	0.1	-	25.1	29.6	-
May	0.4	0.8	-	1.3	2.4	-	34.0	33.4	-
June	0.6	0.9	-	1.0	2.4	-	56.7	37.4	-
July	0.6	1.3	-	1.1	3.1	-	55.8	41.5	-
August	0.9	1.5	-	1.4	2.9	-	67.3	50.5	-
September	0.5	0.9	-	1.1	2.1	-	45.7	42.2	-
October	-	0.6	-	-	1.3	-	-	44.1	-
November	-	0.6	-	-	1.3	-	-	47.3	-
December	-	0.4	-	-	1.2	-	-	36.3	-
<b>Total</b>	<b>4.8</b>	<b>6.9</b>	<b>1.0</b>	<b>10.7</b>	<b>16.6</b>	<b>3.1</b>	<b>44.8</b>	<b>41.7</b>	<b>32.2</b>

Departures by Air to Spain, April 2009 - March 2010

**Notes:**

(i) Passenger load factors are calculated on the basis of actual figures and exclude passengers on connecting flights when applicable.

(ii) Flights to and from Barcelona commenced in July 2009 and ended in September 2009.

(iii) Flights to and from Madrid recommenced in April 2009 and ended in March 2010.

(iv) The total yearly figures have been rounded off from the actual figures and need not necessarily equal the sum of the rounded off monthly figures.

## 4: Arrivals by Air (Charter Flights)

**Table 4.01 Arrivals by Air (Charter Flights), 1998 - 2000**

	Seats used (000's)			Seats offered (000's)			Load factor (%) <sup>(i)</sup>		
	1998	1999	2000	1998	1999	2000	1998	1999	2000
January	-	-	0.1	-	0.1	0.1	-	5.6	82.6
February	-	-	-	-	-	-	-	-	-
March	-	0.2	-	-	0.2	-	-	82.5	-
April	-	0.1	0.2	-	0.1	0.3	-	56.9	65.8
May	-	-	-	-	-	-	-	-	-
June	-	-	-	-	-	-	-	-	-
July	-	-	-	-	-	-	-	-	-
August	-	-	-	-	-	0.1	-	-	94.0
September	-	-	0.1	-	0.2	0.1	-	15.6	56.9
October	-	0.1	-	0.1	0.2	-	58.0	46.1	-
November	0.7	-	0.1	0.7	-	0.2	99.3	-	34.4
December	0.3	0.1	-	0.4	0.2	-	79.4	73.3	67.5
<b>Total</b>	<b>1.1</b>	<b>0.5</b>	<b>0.5</b>	<b>1.2</b>	<b>1.0</b>	<b>0.8</b>	<b>90.1</b>	<b>48.9</b>	<b>62.4</b>

**Table 4.02 Arrivals by Air (Charter Flights), 2001 - 2003**

	Seats used (000's)			Seats offered (000's)			Load factor (%) <sup>(i)</sup>		
	2001	2002	2003	2001	2002	2003	2001	2002	2003
January	-	-	0.2	-	-	0.3	100.0	-	61.6
February	-	-	0.8	-	-	1.4	-	-	60.1
March	-	0.1	0.2	-	0.1	0.5	100.0	100.0	41.2
April	0.1	0.2	0.2	0.3	0.2	0.3	42.4	100.0	55.2
May	-	0.1	0.2	-	0.1	0.3	-	100.0	71.8
June	-	0.1	-	-	0.1	-	-	100.0	-
July	-	0.1	-	-	0.1	-	-	100.0	-
August	-	-	-	-	-	-	-	-	-
September	-	-	0.2	-	-	0.3	-	-	63.2
October	-	0.1	0.2	-	0.1	0.2	55.1	100.0	87.6
November	-	-	-	-	-	-	-	-	-
December	-	0.1	-	-	0.1	-	-	100.0	-
<b>Total</b>	<b>0.1</b>	<b>0.9</b>	<b>2.0</b>	<b>0.3</b>	<b>0.9</b>	<b>3.3</b>	<b>50.9</b>	<b>100.0</b>	<b>59.9</b>

**Notes:**

(i) Passenger load factors are calculated on the basis of actual figures and exclude passengers on connecting flights when applicable.

(ii) Figures exclude MoD charter flights.

(iii) The total yearly figures have been rounded off from the actual figures and need not necessarily equal the sum of the rounded off monthly figures.

## 4: Arrivals by Air (Charter Flights)

**Table 4.03 Arrivals by Air (Charter Flights), 2004 - 2006**

	Seats used (000's)			Seats offered (000's)			Load factor (%) <sup>(i)</sup>		
	2004	2005	2006	2004	2005	2006	2004	2005	2006
January	-	-	-	-	-	-	-	-	-
February	-	-	-	-	-	-	-	-	-
March	-	-	-	0.1	-	-	17.0	-	-
April	-	-	-	-	-	-	-	-	-
May	0.2	-	-	0.2	-	-	91.3	-	-
June	-	0.2	0.2	-	0.2	0.2	-	90.9	69.4
July	0.2	-	0.2	0.3	-	0.3	63.5	-	84.4
August	-	-	0.2	-	-	0.2	-	-	97.3
September	0.1	0.2	-	0.2	0.2	-	64.4	97.3	-
October	0.1	0.1	-	0.1	0.2	-	100.0	88.1	-
November	0.2	0.2	-	0.2	0.2	-	93.6	97.3	-
December	-	-	-	-	-	-	-	-	-
<b>Total</b>	<b>0.9</b>	<b>0.8</b>	<b>0.6</b>	<b>1.2</b>	<b>0.8</b>	<b>0.7</b>	<b>74.4</b>	<b>93.7</b>	<b>83.8</b>

**Table 4.04 Arrivals by Air (Charter Flights), 2007, 2009 - 2010**

	Seats used (000's)			Seats offered (000's)			Load factor (%) <sup>(i)</sup>		
	2007	2009	2010	2007	2009	2010	2007	2009	2010
January	-	-	-	-	-	-	-	-	-
February	-	-	-	0.1	-	-	32.8	-	-
March	-	-	-	-	-	-	-	-	-
April	-	-	-	0.1	-	-	50.0	-	-
May	-	-	0.2	0.4	-	0.4	-	-	56.7
June	-	-	-	0.2	-	-	-	-	-
July	0.4	-	-	0.5	-	-	67.9	-	-
August	-	0.2	-	-	0.2	-	-	83.1	-
September	-	-	0.3	0.2	-	0.5	-	-	67.3
October	-	-	-	-	-	-	-	-	-
November	-	-	-	0.2	-	-	20.6	-	-
December	-	-	-	0.1	-	-	-	-	-
<b>Total</b>	<b>0.5</b>	<b>0.2</b>	<b>0.5</b>	<b>1.8</b>	<b>0.2</b>	<b>0.8</b>	<b>25.0</b>	<b>83.1</b>	<b>62.6</b>

**Notes:**

(i) Passenger load factors are calculated on the basis of actual figures and exclude passengers on connecting flights when applicable.

(ii) Figures exclude MoD charter flights.

(iii) No charter operations were recorded during 2008, 2011 - 2013.

(iv) The total yearly figures have been rounded off from the actual figures and need not necessarily equal the sum of the rounded off monthly figures.



## 5: Departures by Air (Charter Flights)

Table 5.01 Departures by Air (Charter Flights), 1998 - 2000

	Seats used (000's)			Seats offered (000's)			Load factor (%) <sup>(i)</sup>		
	1998	1999	2000	1998	1999	2000	1998	1999	2000
January	-	0.1	0.1	-	0.1	0.1	-	81.9	82.6
February	-	-	-	-	-	-	-	-	-
March	-	0.1	-	-	0.2	-	-	54.1	-
April	-	0.1	0.2	-	0.1	0.3	-	100.0	65.8
May	-	-	-	-	-	-	-	-	-
June	-	-	-	-	-	-	-	-	-
July	-	-	-	-	-	-	-	-	-
August	-	-	-	-	-	0.1	-	-	94.0
September	-	-	0.1	-	0.2	0.1	-	15.0	56.9
October	-	0.1	-	0.1	0.2	-	46.0	54.4	-
November	0.6	-	0.1	0.7	-	0.2	88.1	-	34.4
December	0.3	-	-	0.4	0.2	-	57.3	-	67.5
<b>Total</b>	<b>0.9</b>	<b>0.5</b>	<b>0.5</b>	<b>1.2</b>	<b>1.0</b>	<b>0.8</b>	<b>74.8</b>	<b>48.8</b>	<b>62.4</b>

Table 5.02 Departures by Air (Charter Flights), 2001 - 2003

	Seats used (000's)			Seats offered (000's)			Load factor (%) <sup>(i)</sup>		
	2001	2002	2003	2001	2002	2003	2001	2002	2003
January	-	-	0.1	-	-	0.3	-	-	43.8
February	-	-	0.9	-	-	1.4	-	-	64.5
March	-	0.1	0.2	-	0.1	0.5	-	100.0	42.0
April	0.1	0.2	0.2	0.3	0.2	0.3	42.4	100.0	62.8
May	-	0.1	0.2	-	0.1	0.3	-	100.0	63.1
June	-	0.1	-	-	0.1	-	-	100.0	-
July	-	0.1	-	-	0.1	-	-	100.0	-
August	-	-	-	-	-	-	-	-	-
September	-	-	0.1	-	-	0.3	-	-	41.9
October	-	0.1	0.2	-	0.1	0.2	-	100.0	85.4
November	-	-	-	-	-	-	-	-	-
December	-	0.1	-	-	0.1	-	-	53.8	-
<b>Total</b>	<b>0.1</b>	<b>0.9</b>	<b>1.9</b>	<b>0.3</b>	<b>0.9</b>	<b>3.3</b>	<b>42.4</b>	<b>94.6</b>	<b>58.2</b>

## Notes:

(i) Passenger load factors are calculated on the basis of actual figures and exclude passengers on connecting flights when applicable.

(ii) Figures exclude MoD charter flights.

(iii) The total yearly figures have been rounded off from the actual figures and need not necessarily equal the sum of the rounded off monthly figures.

## 5: Departures by Air (Charter Flights)

Table 5.03 Departures by Air (Charter Flights), 2004 - 2006

	Seats used (000's)			Seats offered (000's)			Load factor (%) <sup>(i)</sup>		
	2004	2005	2006	2004	2005	2006	2004	2005	2006
January	-	-	-	-	-	-	-	-	-
February	-	-	-	-	-	-	-	-	-
March	-	-	-	0.1	-	-	25.0	-	-
April	-	-	-	-	-	-	-	-	-
May	0.2	-	-	0.2	-	-	90.4	-	-
June	-	0.2	0.2	-	0.2	0.2	-	80.8	95.0
July	0.2	-	0.2	0.3	-	0.3	59.0	-	85.8
August	-	-	0.1	-	-	0.2	-	-	63.5
September	0.2	0.2	-	0.2	0.2	-	86.8	68.9	-
October	0.1	0.2	-	0.1	0.2	-	100.0	98.8	-
November	0.2	0.2	-	0.2	0.2	-	94.1	89.0	-
December	-	-	-	-	-	-	-	-	-
<b>Total</b>	<b>0.9</b>	<b>0.7</b>	<b>0.6</b>	<b>1.2</b>	<b>0.8</b>	<b>0.7</b>	<b>78.1</b>	<b>83.5</b>	<b>81.8</b>

Table 5.04 Departures by Air (Charter Flights), 2007, 2009 - 2010

	Seats used (000's)			Seats offered (000's)			Load factor (%) <sup>(i)</sup>		
	2007	2009	2010	2007	2009	2010	2007	2009	2010
January	-	-	-	-	-	-	-	-	-
February	-	-	-	0.1	-	-	32.8	-	-
March	-	-	-	-	-	-	-	-	-
April	-	-	-	0.1	-	-	50.0	-	-
May	0.2	-	0.2	0.4	-	0.4	59.6	-	65.3
June	0.2	-	-	0.2	-	-	100.0	-	-
July	0.2	-	-	0.5	-	-	42.0	-	-
August	-	0.2	-	-	0.2	-	78.6	88.6	-
September	0.2	-	0.3	0.2	-	0.5	73.5	-	73.4
October	-	-	-	-	-	-	-	-	-
November	-	-	-	0.2	-	-	18.6	-	-
December	0.1	-	-	0.1	-	-	73.6	-	-
<b>Total</b>	<b>1.0</b>	<b>0.2</b>	<b>0.6</b>	<b>1.8</b>	<b>0.2</b>	<b>0.8</b>	<b>56.0</b>	<b>88.6</b>	<b>69.8</b>

## Notes:

(i) Passenger load factors are calculated on the basis of actual figures and exclude passengers on connecting flights when applicable.

(ii) Figures exclude MoD charter flights.

(iii) No charter operations were recorded during 2008, 2011 - 2013.

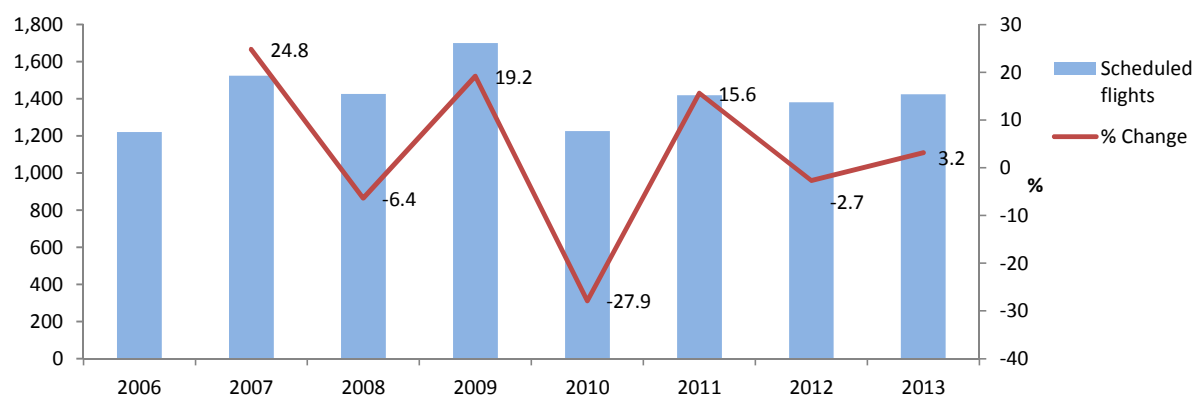
(iv) The total yearly figures have been rounded off from the actual figures and need not necessarily equal the sum of the rounded off monthly figures.

## 6: Aircraft Arrivals

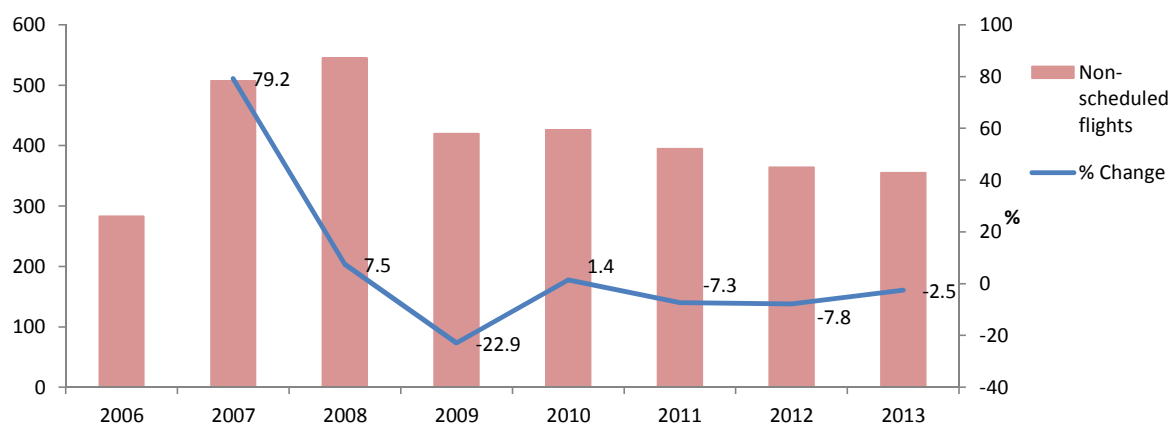
**Table 6.01 Aircraft Arrivals, 2006 - 2013**

Year	Scheduled flights	Non-scheduled flights <sup>(i)</sup>	Total flights
2006	1,221	283	<b>1,504</b>
2007	1,524	507	<b>2,031</b>
2008	1,427	545	<b>1,972</b>
2009	1,701	420	<b>2,121</b>
2010	1,227	426	<b>1,653</b>
2011	1,419	395	<b>1,814</b>
2012	1,381	364	<b>1,745</b>
2013	1,425	355	<b>1,780</b>

Scheduled Aircraft Flights (Arrivals) 2006 - 2013



Non-scheduled Aircraft Flights (Arrivals) 2006 - 2013

**Note:**

(i) Non-scheduled flights include commercial charters, business jets and light aircraft.

(ii) Figures exclude MoD charter flights.

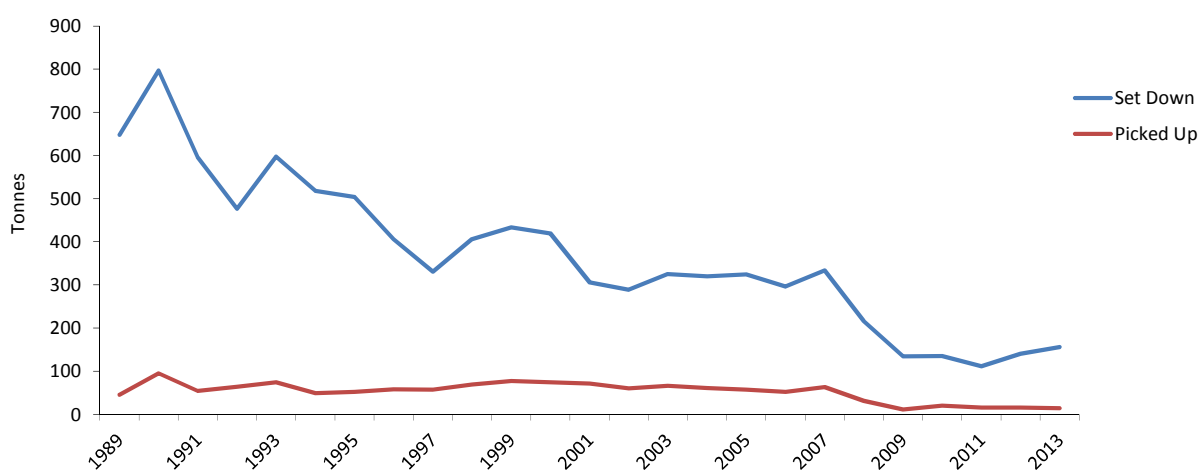
(iii) No charter operations were recorded during 2008, 2011 - 2013.

## 7: Commercial Freight

**Table 7.01** Commercial Freight, Set Down/Picked Up by Air, Gibraltar, 1989 - 2013

Year	Set Down (000's kgs)	% Change	Picked Up (000's kgs)	% Change
1989	648	-	45	-
1990	797	23.0	95	111.1
1991	596	-25.2	54	-43.2
1992	476	-20.1	64	18.5
1993	597	25.4	74	15.6
1994	518	-13.2	49	-33.8
1995	504	-2.7	52	6.1
1996	406	-19.4	58	11.5
1997	330	-18.7	57	-1.7
1998	406	23.0	69	21.1
1999	433	6.7	77	11.6
2000	419	-3.2	74	-3.9
2001	306	-27.0	71	-4.1
2002	289	-5.6	60	-15.5
2003	325	12.5	66	10.0
2004	320	-1.5	61	-7.6
2005	324	1.3	57	-6.6
2006	296	-8.6	52	-8.8
2007	333	12.5	63	21.2
2008	216	-35.1	31	-50.8
2009	134	-38.0	11	-64.5
2010	135	0.7	20	81.8
2011	111	-17.8	16	-20.0
2012	140	26.1	16	0.0
2013	156	11.4	14	-12.5

Commercial Freight, 1989 - 2013



Note:

(i) Relates to freight from/to all destinations.