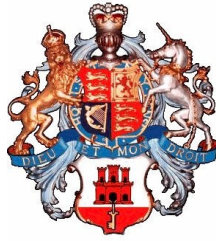


GOVERNMENT OF GIBRALTAR

**AIR TRAFFIC
SURVEY
2010**

STATISTICS OFFICE



GOVERNMENT OF GIBRALTAR

AIR TRAFFIC SURVEY 2010

STATISTICS OFFICE

Government of Gibraltar
Statistics Office

Statistics Online

Copies of the Air Traffic Survey can be obtained, free of charge from the Statistics Office and are also available electronically on the Gibraltar Government Website www.gibraltar.gov.gi.

Historical data can be downloaded from previous copies of the report available on-line.

Comments and requests for general information should be addressed to:

Statistics Office
99 Harbours Walk
The New Harbours

Or

E-mail: statistics@gibraltar.gov.gi

Tel: +350 20075515/ +350 20075490

Fax: +350 20051160

PREFACE

The Statistics (Air Traffic Survey) Order 1971 requires that a report and summary of the findings of the Air Traffic Survey be laid before the Gibraltar Parliament.

The report contains statistical data on air traffic operations between Gibraltar and other destinations for both scheduled and charter airlines for the years 1986 to 2010. It also includes some general data on commercial freight and on the number of flights arriving in Gibraltar.

I must express my thanks to Security & Immigration Ltd and Terminal Management Ltd for their continued co-operation in the conduct of this Survey.

GOVERNMENT STATISTICIAN

- C O N T E N T S -

A. Definitions

<u>TABLES</u>	<u>DESCRIPTION</u>	<u>PAGE</u>
1	Arrivals/Departures by Air, 1986 – 2010	1
Chart	Arrivals by Air, 1986 – 2010	
2(a)	Arrivals by Air from U.K. (Scheduled Flights), 1986 -1989	2
2(b)	Arrivals by Air from U.K. (Scheduled Flights), 1990 - 1993	
2(c)	Arrivals by Air from U.K. (Scheduled Flights), 1994 - 1997	3
2(d)	Arrivals by Air from U.K. (Scheduled Flights), 1998 - 2001	
2(e)	Arrivals by Air from U.K. (Scheduled Flights), 2002 - 2005	4
2(f)	Arrivals by Air from U.K. (Scheduled Flights), 2006 - 2009	
2(g)	Arrivals by Air from U.K. (Scheduled Flights), 2010	5
Chart	Arrivals by Air from U.K. (Scheduled Flights), 2010	
Chart	Arrivals by Air from U.K. (Scheduled Flights), Load Factor, 2010	
2(h)	Arrivals by Air from Spain (Scheduled Flights), 2008 - 2010	6
Chart	Arrivals by Air from Spain (Scheduled Flights), 2010	
3(a)	Departures by Air to U.K. (Scheduled Flights), 1986 - 1988	7
3(b)	Departures by Air to U.K. (Scheduled Flights), 1989 - 1991	
3(c)	Departures by Air to U.K. (Scheduled Flights), 1992 - 1994	8
3(d)	Departures by Air to U.K. (Scheduled Flights), 1995 - 1997	
3(e)	Departures by Air to U.K. (Scheduled Flights), 1998 - 2000	9
3(f)	Departures by Air to U.K. (Scheduled Flights), 2001 - 2003	
3(g)	Departures by Air to U.K. (Scheduled Flights), 2004 - 2006	10
3(h)	Departures by Air to U.K. (Scheduled Flights), 2007 - 2009	
3(i)	Departures by Air to U.K. (Scheduled Flights), 2010	11
Chart	Departures by Air to U.K. (Scheduled Flights), 2010	
Chart	Departures by Air to U.K. (Scheduled Flights), Load Factor, 2010	
3(j)	Departures by Air to Spain (Scheduled Flights), 2008 - 2010	12
Chart	Departures by Air to Spain (Scheduled Flights), 2010	
4(a)	Arrivals by Air from U.K. (Charter Flights), 1990 – 1992,1998	13
4(b)	Arrivals by Air from U.K. (Charter Flights), 1999 - 2002	
4(c)	Arrivals by Air from U.K. (Charter Flights), 2003 - 2006	14
4(d)	Arrivals by Air from U.K. (Charter Flights), 2007 - 2010	
5(a)	Departures by Air to U.K. (Charter Flights), 1990 – 1992,1998	15
5(b)	Departures by Air to U.K. (Charter Flights), 1999 - 2002	
5(c)	Departures by Air to U.K. (Charter Flights), 2003 - 2006	16
5(d)	Departures by Air to U.K. (Charter Flights), 2007 - 2010	
6	Flight Arrivals, 2003 -2010	17
Chart	Flight Arrivals, 2003 -2010	
7	Commercial Freight, Set Down/Picked Up, Gibraltar, 1986 - 2010	18
Chart	Commercial Freight, 1986 - 2010	

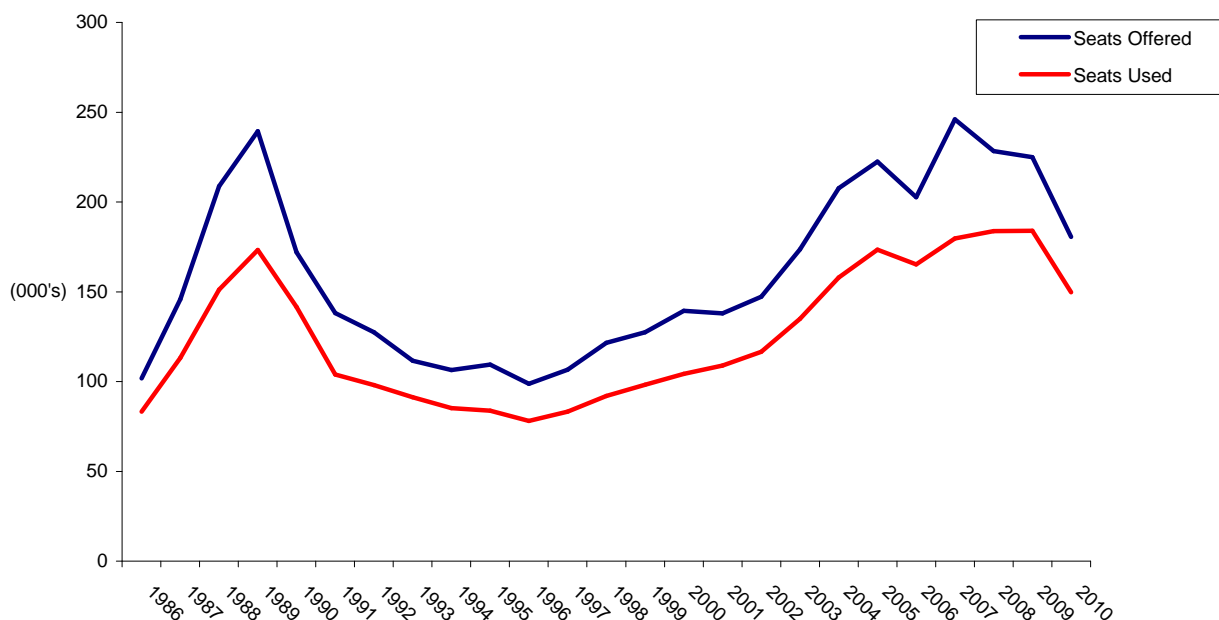
A. DEFINITIONS

- (a) Passenger Load Factor: $\frac{\text{All seats used}}{\text{All seats offered (less in-transits)}} \times 100$
- (b) Revenue Load Factor: $\frac{\text{All seats used by "paying" passengers}}{\text{All seats offered (less in-transits)}} \times 100$
- (c) Scheduled Services: are those performed according to a published timetable including those supplementary thereto, and available for use by members of the public.
- (d) Charter Services: includes flights carrying 10 or more passengers, other than scheduled services and Ministry of Defence Charters.

Table 1: All Arrivals/Departures by Air 1986 - 2010

YEAR	ARRIVALS (000's)						DEPARTURES (000's)					
	TOTAL		SCHEDULED		CHARTER		TOTAL		SCHEDULED		CHARTER	
	Seats Offered	Seats Used	Seats Offered	Seats Used	Seats Offered	Seats Used	Seats Offered	Seats Used	Seats Offered	Seats Used	Seats Offered	Seats Used
1986	101.7	83.2	96.9	79.1	4.8	4.1	101.8	84.1	96.9	80.1	4.9	4.0
1987	145.9	113.2	129.8	98.1	16.1	15.1	145.4	114.8	129.3	100.9	16.1	13.9
1988	208.7	151.2	196.0	139.6	12.7	11.6	208.3	156.1	195.6	144.6	12.7	11.5
1989	239.4	173.2	231.6	167.6	7.8	5.6	237.8	179.8	230.0	174.0	7.8	5.8
1990	172.0	141.5	165.8	136.8	6.2	4.7	175.1	148.5	168.9	143.8	6.2	4.7
1991	138.1	104.0	126.0	94.9	12.1	9.1	140.2	106.3	127.8	96.6	12.4	9.7
1992	127.4	98.1	127.0	97.7	0.4	0.4	128.2	101.0	127.7	100.5	0.5	0.4
1993	111.5	91.3	111.4	91.2	0.1	0.1	112.2	93.3	112.2	93.3	0.0	0.0
1994	106.4	85.2	106.4	85.2	0.0	0.0	107.1	86.9	207.2	86.9	0.0	0.0
1995	109.4	83.8	109.4	83.8	0.0	0.0	109.5	85.3	109.5	85.3	0.0	0.0
1996	98.7	78.1	98.7	78.1	0.0	0.0	98.1	78.2	98.1	78.2	0.0	0.0
1997	106.6	83.2	106.6	83.2	0.0	0.0	104.4	81.5	104.4	81.5	0.0	0.0
1998	121.5	92.0	120.4	91.0	1.2	1.1	120.2	91.0	119.0	90.1	1.2	0.9
1999	127.5	98.3	126.5	97.8	1.0	0.5	127.5	97.9	126.5	97.4	1.0	0.5
2000	139.4	104.3	138.6	103.7	0.8	0.5	138.9	107.1	138.1	106.6	0.8	0.5
2001	138.0	109.0	137.7	108.8	0.3	0.2	138.2	110.6	137.9	110.5	0.4	0.2
2002	147.2	116.6	146.3	115.7	0.9	0.9	147.0	114.8	146.1	114.0	0.9	0.9
2003	173.5	135.0	170.3	133.0	3.3	2.0	173.1	134.8	169.8	132.9	3.3	1.9
2004	207.6	157.9	206.4	157.0	1.2	0.9	207.6	158.3	206.4	157.3	1.2	0.9
2005	222.4	173.5	221.6	172.7	0.8	0.8	222.2	174.4	221.4	173.7	0.8	0.7
2006	202.7	165.2	202.0	164.6	0.7	0.6	202.6	166.0	201.9	165.4	0.7	0.6
2007	245.9	179.7	244.1	179.3	1.8	0.5	246.2	181.6	244.3	180.6	1.8	1.0
2008	228.3	183.7	228.3	183.7	0.0	0.0	228.3	187.3	228.3	187.3	0.0	0.0
2009	225.0	183.9	224.8	183.7	0.2	0.2	224.9	186.2	224.7	186.0	0.2	0.2
2010	181.9	151.5	181.0	151.0	0.8	0.5	182.0	152.7	181.2	152.1	0.8	0.6

ARRIVALS BY AIR 1986 - 2010



- Notes:**
- (i) Charter flights from 1998 include all destinations.
 - (ii) Flights to and from Manchester re-commenced in September 2008.
 - (iii) Flights to and from Heathrow re-commenced in October 2009.
 - (iv) Flights to and from Gatwick were reduced from 13 to 7 a week as from October 2009.
 - (v) Flights to and from Madrid recommenced in April 2009 and ended in March 2010.
 - (vi) The yearly totals have been rounded off from the actual figure and need not necessarily equal the sum of the rounded off sub-totals.

Table 2(a): Arrivals by Air from U.K. (Scheduled Flights), 1986 - 1989

<u>MONTH</u>	<u>(000's)</u>				<u>(000's)</u>				<u>% (i)</u>			
	<u>SEATS USED</u>				<u>SEATS OFFERED</u>				<u>LOAD FACTOR</u>			
	<u>1986</u>	<u>1987</u>	<u>1988</u>	<u>1989</u>	<u>1986</u>	<u>1987</u>	<u>1988</u>	<u>1989</u>	<u>1986</u>	<u>1987</u>	<u>1988</u>	<u>1989</u>
JANUARY	4.1	4.7	7.0	9.7	7.0	7.8	12.7	18.0	58.6	60.3	55.2	53.9
FEBRUARY	4.4	5.0	8.4	10.4	5.9	6.6	11.3	14.4	75.2	76.2	74.9	72.4
MARCH	6.5	7.0	10.6	13.6	7.1	8.6	13.1	17.8	92.2	81.9	81.2	76.3
APRIL	5.6	7.6	10.4	11.9	7.2	8.4	14.2	17.6	77.4	90.0	73.7	67.7
MAY	7.4	9.0	13.1	14.9	8.7	11.4	17.2	19.3	84.8	79.3	76.3	77.2
JUNE	7.1	8.1	11.9	14.7	8.5	12.0	16.2	19.8	83.2	67.7	73.6	74.3
JULY	8.3	10.6	15.5	20.3	9.0	12.4	19.5	24.8	92.2	85.3	79.7	81.8
AUGUST	8.7	10.7	14.6	18.5	9.8	12.4	18.1	24.4	88.2	85.9	80.7	75.8
SEPTEMBER	7.6	8.7	14.0	16.5	8.9	11.6	18.0	22.2	85.0	74.8	77.9	74.3
OCTOBER	7.8	9.8	14.1	16.3	9.1	12.4	18.4	22.5	85.4	79.4	76.7	72.1
NOVEMBER	5.1	7.7	8.9	9.9	7.4	13.0	14.7	15.5	69.4	59.4	60.2	63.7
DECEMBER	6.5	8.7	10.9	10.9	8.2	12.9	16.3	15.3	78.6	67.4	67.3	71.5
TOTAL	79.1	97.6	139.4	167.6	96.9	129.5	189.7	231.6	81.6	75.2	73.5	72.4

Table 2(b): Arrivals by Air from U.K. (Scheduled Flights), 1990 - 1993

<u>MONTH</u>	<u>(000's)</u>				<u>(000's)</u>				<u>% (i)</u>			
	<u>SEATS USED</u>				<u>SEATS OFFERED</u>				<u>LOAD FACTOR</u>			
	<u>1990</u>	<u>1991</u>	<u>1992</u>	<u>1993</u>	<u>1990</u>	<u>1991</u>	<u>1992</u>	<u>1993</u>	<u>1990</u>	<u>1991</u>	<u>1992</u>	<u>1993</u>
JANUARY	10.0	7.3	6.2	5.7	15.1	12.2	10.0	7.4	66.3	59.3	61.2	77.9
FEBRUARY	10.6	6.8	6.2	5.5	13.1	10.4	8.7	6.1	81.1	65.9	71.0	90.7
MARCH	12.9	7.4	7.7	7.1	14.8	9.2	9.2	7.5	87.1	81.3	83.0	95.9
APRIL	11.6	6.7	9.1	8.2	14.2	7.9	12.8	10.2	82.2	84.1	71.1	79.9
MAY	12.2	7.5	9.3	8.6	13.8	8.3	12.5	11.1	88.1	90.7	74.1	76.7
JUNE	12.1	7.9	9.6	8.6	13.7	9.5	12.0	11.1	88.3	83.5	79.8	77.7
JULY	13.9	10.8	11.5	10.1	14.6	12.3	12.5	10.9	95.5	88.1	92.2	92.3
AUGUST	12.5	9.7	9.8	8.8	14.3	11.9	12.6	11.0	87.2	81.3	77.4	79.9
SEPTEMBER	12.3	9.0	6.9	8.7	13.9	11.5	8.3	10.7	88.5	78.1	82.9	81.5
OCTOBER	11.5	8.6	9.0	7.9	14.5	11.7	11.9	11.2	79.2	74.0	75.6	70.5
NOVEMBER	8.4	6.7	6.6	6.1	11.6	11.1	8.8	7.3	72.2	60.4	74.7	84.0
DECEMBER	8.8	6.5	6.0	5.8	12.1	10.2	7.5	6.9	72.3	63.4	79.5	84.8
TOTAL	136.8	94.9	97.7	91.2	165.6	126.0	127.0	111.4	82.5	75.3	76.9	81.9

Note: (i) All load factors are calculated on the basis of actual figures. The total yearly figure has been rounded off from the actual figure and need not necessarily equal the sum of the rounded off monthly figures.

Table 2(c): Arrivals by Air from U.K. (Scheduled Flights), 1994 - 1997

<u>MONTH</u>	<u>(000's)</u>				<u>(000's)</u>				<u>% (i)</u>			
	<u>SEATS USED</u>				<u>SEATS OFFERED</u>				<u>LOAD FACTOR</u>			
	<u>1994</u>	<u>1995</u>	<u>1996</u>	<u>1997</u>	<u>1994</u>	<u>1995</u>	<u>1996</u>	<u>1997</u>	<u>1994</u>	<u>1995</u>	<u>1996</u>	<u>1997</u>
JANUARY	5.1	4.1	4.6	4.6	7.1	7.8	7.7	7.9	71.3	53.0	53.9	57.8
FEBRUARY	5.0	5.6	5.5	5.2	5.9	6.6	7.7	6.3	83.5	84.2	68.9	83.0
MARCH	6.9	7.3	7.0	6.1	7.4	7.8	8.4	6.9	93.8	93.8	83.7	87.4
APRIL	6.7	7.7	6.3	5.4	9.4	10.1	8.5	6.6	71.0	76.0	74.3	82.3
MAY	8.3	8.1	7.7	8.6	9.9	10.3	9.0	9.9	83.2	78.1	86.4	86.4
JUNE	8.3	7.6	7.5	7.6	10.6	9.8	8.7	9.4	79.0	77.0	85.6	80.2
JULY	9.6	8.8	7.6	8.6	10.8	10.3	8.4	9.5	89.0	85.8	90.7	90.8
AUGUST	8.4	7.8	6.6	8.3	11.2	10.1	7.5	10.0	75.4	77.7	87.8	83.4
SEPTEMBER	8.3	7.2	7.2	8.1	10.2	9.3	8.4	10.7	80.8	77.7	86.4	75.6
OCTOBER	7.5	7.3	6.6	8.5	9.8	10.0	8.5	10.4	76.3	73.7	78.3	81.1
NOVEMBER	5.3	5.8	5.8	5.9	6.9	8.4	7.8	9.2	76.3	69.5	74.5	63.7
DECEMBER	5.9	6.5	5.7	6.4	7.2	8.9	8.1	9.8	82.4	73.8	70.7	65.8
TOTAL	85.2	83.8	78.1	83.2	106.4	109.4	98.7	106.6	80.0	76.7	79.1	78.0

Table 2(d): Arrivals by Air from U.K. (Scheduled Flights), 1998 - 2001

<u>MONTH</u>	<u>(000's)</u>				<u>(000's)</u>				<u>% (i)</u>			
	<u>SEATS USED</u>				<u>SEATS OFFERED</u>				<u>LOAD FACTOR</u>			
	<u>1998</u>	<u>1999</u>	<u>2000</u>	<u>2001</u>	<u>1998</u>	<u>1999</u>	<u>2000</u>	<u>2001</u>	<u>1998</u>	<u>1999</u>	<u>2000</u>	<u>2001</u>
JANUARY	4.8	5.2	4.6	5.4	9.4	8.4	11.1	9.4	51.1	62.5	41.5	57.3
FEBRUARY	6.0	6.3	6.2	6.9	9.0	7.4	9.8	8.3	66.4	84.5	63.6	82.7
MARCH	7.6	8.1	8.7	8.6	9.8	8.8	10.7	9.8	78.1	91.4	81.3	87.9
APRIL	7.8	7.8	9.1	9.0	10.0	9.8	10.4	10.6	77.9	80.4	87.2	84.5
MAY	9.0	10.0	10.1	11.1	11.4	12.5	13.4	13.2	79.0	80.3	75.9	83.6
JUNE	8.0	9.8	9.7	11.0	10.9	11.8	12.4	12.8	73.6	82.7	78.3	85.7
JULY	9.3	10.7	10.8	11.7	10.6	12.4	13.4	13.5	87.3	85.8	80.8	86.6
AUGUST	9.2	9.2	10.1	10.5	11.2	11.6	12.9	13.4	82.2	79.2	78.1	78.3
SEPTEMBER	8.4	8.9	10.5	10.2	10.7	11.8	12.7	12.8	78.0	75.6	82.5	79.5
OCTOBER	8.2	8.3	10.0	9.5	11.2	11.7	13.4	13.4	73.1	70.3	74.6	70.9
NOVEMBER	6.5	6.5	7.0	7.5	8.4	9.7	9.1	10.6	78.0	67.0	76.2	71.1
DECEMBER	6.3	7.1	7.0	7.5	7.9	10.6	9.3	9.7	79.7	66.9	75.0	76.5
TOTAL	91.0	97.8	103.7	108.8	120.4	126.5	138.6	137.7	75.6	77.3	74.9	79.0

Note: (i) All load factors are calculated on the basis of actual figures. The total yearly figure has been rounded off from the actual figure and need not necessarily equal the sum of the rounded off monthly figures.

Table 2(e): Arrivals by Air from U.K. (Scheduled Flights), 2002 - 2005

<u>MONTH</u>	<u>(000's)</u>				<u>(000's)</u>				<u>% (i)</u>			
	<u>SEATS USED</u>				<u>SEATS OFFERED</u>				<u>LOAD FACTOR</u>			
	<u>2002</u>	<u>2003</u>	<u>2004</u>	<u>2005</u>	<u>2002</u>	<u>2003</u>	<u>2004</u>	<u>2005</u>	<u>2002</u>	<u>2003</u>	<u>2004</u>	<u>2005</u>
JANUARY	5.5	6.5	7.5	10.0	9.3	11.4	12.4	15.9	59.6	57.4	60.0	62.7
FEBRUARY	7.6	7.9	9.2	10.5	8.9	9.3	11.9	14.4	85.9	84.8	77.8	73.2
MARCH	10.2	10.3	12.4	13.4	11.7	13.2	15.4	16.6	87.4	78.2	80.7	80.7
APRIL	8.0	11.0	12.9	13.9	10.7	13.2	16.7	17.6	75.2	82.9	77.0	78.9
MAY	10.4	13.0	14.0	16.0	14.1	16.1	20.2	21.1	73.8	80.9	69.3	75.8
JUNE	10.4	12.2	14.3	16.2	13.3	15.6	19.5	20.4	78.3	78.6	73.4	79.7
JULY	13.2	14.6	17.5	18.4	14.6	16.1	20.1	21.1	90.4	90.6	87.2	87.4
AUGUST	12.2	13.2	16.2	18.2	14.3	16.1	20.2	21.2	85.5	81.8	80.4	85.8
SEPTEMBER	11.4	12.0	15.5	17.0	13.6	15.5	19.6	20.5	83.6	77.2	79.0	83.3
OCTOBER	11.0	12.3	14.3	16.4	14.4	15.9	20.3	20.9	76.4	77.5	70.6	78.4
NOVEMBER	8.0	10.2	11.7	11.5	10.7	14.1	15.2	16.7	74.7	71.9	76.8	69.0
DECEMBER	7.6	9.8	11.6	11.1	10.7	13.8	15.0	15.3	71.4	71.3	77.0	72.7
TOTAL	115.7	133.0	157.0	172.7	146.3	170.3	206.4	221.6	79.1	78.1	76.1	77.9

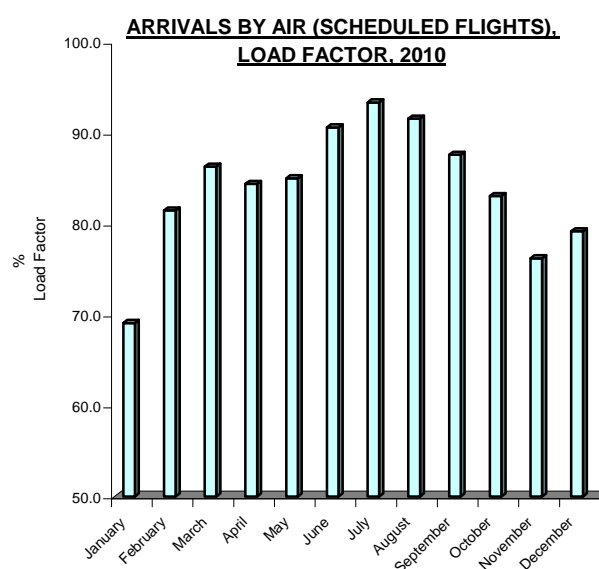
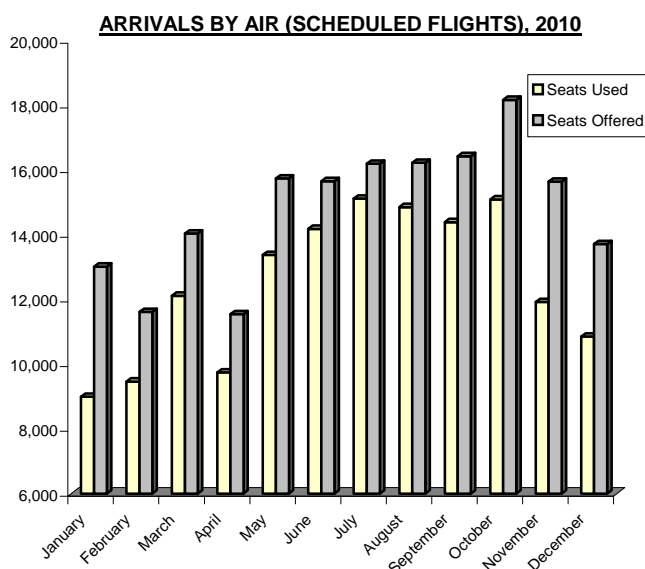
Table 2(f): Arrivals by Air from U.K. (Scheduled Flights), 2006 - 2009

<u>MONTH</u>	<u>(000's)</u>				<u>(000's)</u>				<u>% (i)</u>			
	<u>SEATS USED</u>				<u>SEATS OFFERED</u>				<u>LOAD FACTOR</u>			
	<u>2006</u>	<u>2007</u>	<u>2008</u>	<u>2009</u>	<u>2006</u>	<u>2007</u>	<u>2008</u>	<u>2009</u>	<u>2006</u>	<u>2007</u>	<u>2008</u>	<u>2009</u>
JANUARY	9.7	7.8	9.0	10.9	15.5	11.4	13.0	15.6	62.7	68.7	69.4	69.8
FEBRUARY	10.7	7.8	8.6	12.2	14.8	10.8	10.4	15.5	72.5	72.3	83.2	79.1
MARCH	14.6	9.6	11.3	16.1	17.6	12.7	12.3	18.7	83.3	75.4	91.2	86.5
APRIL	15.2	11.1	15.1	16.3	17.8	14.0	18.3	19.3	85.2	79.6	82.8	84.7
MAY	17.1	13.7	16.8	17.0	19.3	16.8	19.4	18.8	88.6	81.1	86.8	90.3
JUNE	16.8	13.4	15.8	17.0	19.8	16.4	18.9	18.5	84.9	81.7	83.4	92.0
JULY	17.9	15.5	19.4	17.7	19.6	16.9	21.4	19.1	91.2	91.7	90.6	92.9
AUGUST	14.4	13.4	18.1	16.3	17.4	16.4	21.3	18.8	82.9	81.7	85.2	86.8
SEPTEMBER	13.9	14.1	17.7	15.9	17.6	16.4	22.2	18.4	79.0	85.9	79.7	86.3
OCTOBER	13.8	14.1	18.1	15.6	17.4	17.0	22.2	18.4	79.5	82.5	81.1	84.7
NOVEMBER	9.8	11.2	13.9	11.1	11.7	13.2	19.4	14.1	83.7	84.7	71.7	79.1
DECEMBER	10.7	10.5	15.2	10.6	13.6	12.7	18.7	13.1	78.8	82.6	81.2	80.8
TOTAL	164.6	142.1	179.0	176.8	202.0	174.8	217.5	208.1	81.5	81.3	82.3	84.9

Note: (i) All load factors are calculated on the basis of actual figures. The total yearly figure has been rounded off from the actual figure and need not necessarily equal the sum of the rounded off monthly figures.

Table 2(g): Arrivals by Air from U.K. (Scheduled Flights), 2010

<u>MONTH</u>	<u>(000's)</u>		<u>% (i)</u>
	<u>SEATS USED</u>	<u>SEATS OFFERED</u>	<u>LOAD FACTOR</u>
JANUARY	9.0	13.0	69.1
FEBRUARY	9.5	11.6	81.5
MARCH	12.1	14.0	86.3
APRIL	9.7	11.5	84.4
MAY	13.4	15.7	85.0
JUNE	14.2	15.7	90.6
JULY	15.1	16.2	93.3
AUGUST	14.9	16.2	91.6
SEPTEMBER	14.4	16.4	87.6
OCTOBER	15.1	18.2	83.0
NOVEMBER	11.9	15.6	76.2
DECEMBER	10.9	13.7	79.2
TOTAL	150.1	178.0	84.3



Note:(i) Load factors are calculated on the basis of actual figures and exclude visitors in transit when applicable. The total yearly figures have been rounded off from the actual figures and need not necessarily equal the sum of the rounded off monthly figures.

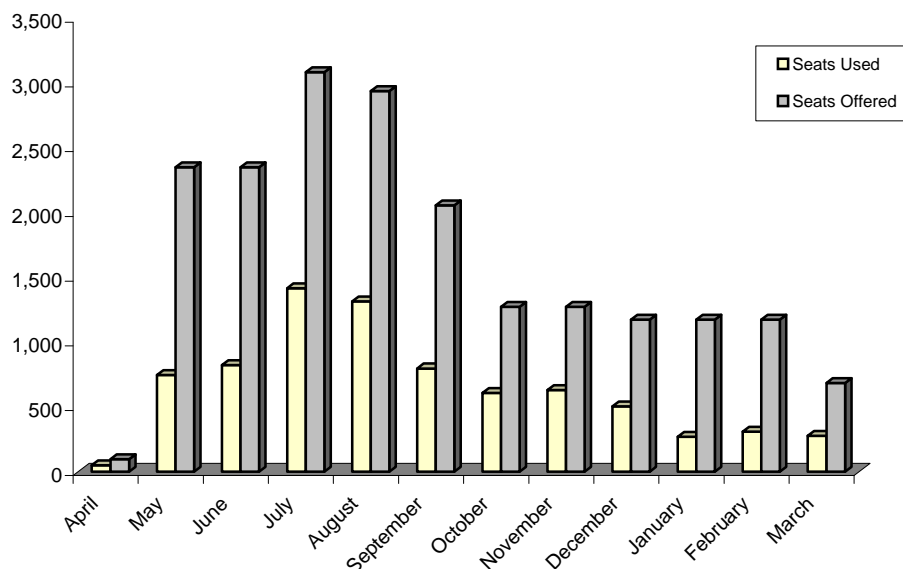
(ii) Flights to and from Heathrow re-commenced in October 2009.

(iii) Flights to and from Gatwick were reduced from 13 to 7 a week as from October 2009.

Table 2(h): Arrivals by Air from Spain (Scheduled Flights), 2008-2010

MONTH	<u>(000's)</u>			<u>(000's)</u>			<u>%</u>		
	<u>SEATS USED</u>			<u>SEATS OFFERED</u>			<u>LOAD FACTOR (i)</u>		
	<u>2008</u>	<u>2009</u>	<u>2010</u>	<u>2008</u>	<u>2009</u>	<u>2010</u>	<u>2008</u>	<u>2009</u>	<u>2010</u>
JANUARY	0.3	0.0	0.3	1.1	0.0	1.2	29.6	0.0	23.0
FEBRUARY	0.5	0.0	0.3	1.3	0.0	1.2	36.0	0.0	26.4
MARCH	0.5	0.0	0.3	1.3	0.0	0.7	42.3	0.0	40.5
APRIL	0.3	0.1	0.0	1.1	0.1	0.0	26.6	51.0	0.0
MAY	0.4	0.7	0.0	1.3	2.4	0.0	32.5	31.8	0.0
JUNE	0.5	0.8	0.0	1.0	2.4	0.0	53.5	35.1	0.0
JULY	0.7	1.4	0.0	1.1	3.1	0.0	63.4	45.9	0.0
AUGUST	0.8	1.3	0.0	1.4	2.9	0.0	57.0	44.8	0.0
SEPTEMBER	0.6	0.8	0.0	1.1	2.1	0.0	49.7	38.8	0.0
OCTOBER	0.0	0.6	0.0	0.0	1.3	0.0	0.0	47.8	0.0
NOVEMBER	0.0	0.6	0.0	0.0	1.3	0.0	0.0	49.6	0.0
DECEMBER	0.0	0.5	0.0	0.0	1.2	0.0	0.0	42.9	0.0
TOTAL	4.7	6.9	0.9	10.7	16.6	3.0	43.3	41.5	28.3

**ARRIVALS BY AIR FROM SPAIN (SCHEDULED FLIGHTS),
APRIL 2009 - MARCH 2010**



- Notes:** (i) Load factors are calculated on the basis of actual figures and exclude visitors in transit when applicable. The total yearly figures have been rounded off from the actual figures and need not necessarily equal the sum of the rounded off monthly figures.
(ii) Flights to and from Barcelona commenced in July 2009 and ended in September 2009.
(iii) Flights to and from Madrid recommenced in April 2009 and ended in March 2010.

Table 3(a): Departures by Air to U.K. (Scheduled Flights), 1986 - 1988

MONTH	<u>(000's)</u>			<u>(000's)</u>			<u>%</u>					
	<u>SEATS USED</u>			<u>SEATS OFFERED</u>			<u>LOAD FACTOR</u>					
	<u>1986</u>	<u>1987</u>	<u>1988</u>	<u>1986</u>	<u>1987</u>	<u>1988</u>	<u>1986</u>		<u>1987</u>		<u>1988</u>	
							(i)	(ii)	(i)	(ii)	(i)	(ii)
JANUARY	5.2	6.4	9.0	6.9	7.9	12.7	75.8	(74.2)	80.6	(79.4)	70.6	(69.7)
FEBRUARY	4.1	4.7	8.2	5.9	6.6	11.2	70.0	(66.1)	70.8	(68.0)	73.1	(72.0)
MARCH	6.0	7.0	9.4	7.1	8.6	12.9	84.1	(82.8)	81.8	(78.1)	73.0	(71.5)
APRIL	6.8	7.5	12.2	7.3	8.3	14.4	92.0	(90.5)	90.2	(89.1)	85.0	(83.6)
MAY	6.3	8.7	11.6	8.6	11.2	16.8	73.9	(72.4)	77.8	(76.1)	68.9	(67.8)
JUNE	7.5	8.7	14.1	8.6	11.9	16.6	87.1	(85.9)	72.9	(71.4)	85.1	(83.8)
JULY	6.9	8.7	13.3	9.0	12.1	17.5	76.6	(75.4)	71.9	(70.6)	76.0	(75.3)
AUGUST	9.2	11.6	15.9	9.8	12.5	18.1	93.4	(92.7)	92.5	(91.7)	87.9	(87.3)
SEPTEMBER	8.6	10.6	15.4	9.0	11.7	17.8	95.7	(94.1)	90.3	(89.2)	86.2	(85.2)
OCTOBER	8.5	10.5	15.5	9.1	12.5	18.2	93.0	(91.1)	84.1	(82.5)	85.5	(84.4)
NOVEMBER	6.2	9.4	11.0	7.4	12.9	14.9	83.8	(81.2)	72.3	(71.1)	74.3	(72.4)
DECEMBER	4.9	6.9	8.7	8.2	13.0	16.1	59.7	(58.5)	55.6	(53.6)	53.8	(53.1)
TOTAL	80.1	100.7	144.3	96.9	129.2	187.2	82.7	(81.1)	77.8	(77.7)	77.1	(76.1)

Table 3(b): Departures by Air to U.K. (Scheduled Flights), 1989 - 1991

MONTH	<u>(000's)</u>			<u>(000's)</u>			<u>%</u>					
	<u>SEATS USED</u>			<u>SEATS OFFERED</u>			<u>LOAD FACTOR</u>					
	<u>1989</u>	<u>1990</u>	<u>1991</u>	<u>1989</u>	<u>1990</u>	<u>1991</u>	<u>1989</u>		<u>1990</u>		<u>1991</u>	
							(i)	(ii)	(i)	(ii)	(i)	(ii)
JANUARY	12.2	11.4	7.5	18.0	15.4	12.1	67.7	(66.4)	74.3	(73.0)	62.1	(60.6)
FEBRUARY	10.2	10.5	6.7	14.4	13.3	10.3	70.9	(69.3)	79.1	(77.2)	65.4	(63.2)
MARCH	11.9	12.3	6.2	17.8	14.4	8.7	67.1	(65.0)	85.0	(83.2)	71.3	(69.1)
APRIL	13.6	13.0	7.8	17.5	14.6	8.6	77.3	(76.3)	89.2	(87.9)	90.2	(87.6)
MAY	13.3	11.7	6.9	18.7	14.2	8.2	70.7	(69.4)	82.2	(80.6)	83.6	(81.0)
JUNE	15.9	13.2	7.9	19.5	14.1	9.8	81.6	(80.5)	93.3	(92.0)	80.5	(77.9)
JULY	17.1	12.5	9.2	24.5	14.6	12.4	70.0	(69.0)	86.0	(84.7)	73.8	(71.2)
AUGUST	20.9	13.7	11.0	24.5	15.2	12.3	85.1	(84.4)	90.5	(89.8)	89.5	(87.0)
SEPTEMBER	18.4	13.4	9.9	22.0	14.3	12.2	83.5	(82.5)	93.2	(91.7)	81.7	(78.7)
OCTOBER	18.3	13.8	10.1	22.5	14.7	12.1	81.5	(80.1)	93.5	(92.2)	83.3	(81.5)
NOVEMBER	11.9	9.6	7.3	15.5	12.0	10.9	77.2	(75.3)	80.5	(77.5)	67.0	(65.4)
DECEMBER	10.2	8.7	6.1	15.0	12.1	10.2	68.2	(67.1)	71.8	(70.2)	59.7	(58.5)
TOTAL	174.0	143.8	96.6	230.0	168.9	127.8	75.7	(70.5)	85.1	(83.6)	75.6	(73.3)

Notes: (i) All load factors are calculated on the basis of actual figures. The total yearly figure has been rounded off from the actual figure and need not necessarily equal the sum of the rounded off monthly figures.

(ii) Revenue load factors exclude non-paying passengers and are also calculated on actual figures.

Table 3(c): Departures by Air to U.K. (Scheduled Flights), 1992 - 1994

<u>MONTH</u>	<u>(000's)</u>			<u>(000's)</u>			<u>%</u>					
	<u>SEATS USED</u>			<u>SEATS OFFERED</u>			<u>LOAD FACTOR</u>					
	<u>1992</u>	<u>1993</u>	<u>1994</u>	<u>1992</u>	<u>1993</u>	<u>1994</u>	<u>1992</u>		<u>1993</u>		<u>1994</u>	
							(i)	(ii)	(i)	(ii)	(i)	(ii)
JANUARY	6.7	6.1	5.8	10.2	7.6	7.1	65.9	(64.8)	80.5	(79.3)	81.9	(80.8)
FEBRUARY	6.2	5.4	5.0	8.6	6.4	6.2	72.5	(70.2)	83.8	(82.9)	81.7	(80.1)
MARCH	7.0	6.7	5.5	9.2	7.8	7.5	76.0	(73.8)	86.1	(84.7)	74.1	(72.9)
APRIL	9.5	8.3	7.6	12.8	10.0	9.3	74.3	(73.2)	82.3	(81.0)	81.9	(81.2)
MAY	8.6	7.9	7.6	12.6	11.1	10.1	68.1	(66.8)	71.3	(69.8)	76.3	(75.2)
JUNE	9.8	9.4	8.7	12.2	11.1	10.4	80.4	(79.1)	84.1	(82.9)	84.8	(83.7)
JULY	9.8	8.7	8.4	12.5	11.3	10.9	78.5	(76.7)	77.5	(76.7)	77.0	(77.5)
AUGUST	11.5	10.0	9.7	12.8	10.9	10.9	89.7	(88.8)	91.4	(90.5)	89.0	(88.3)
SEPTEMBER	7.6	9.7	9.3	8.2	10.5	10.2	91.9	(90.2)	92.2	(91.0)	91.8	(91.2)
OCTOBER	10.5	9.5	8.9	11.9	11.1	10.2	87.7	(85.9)	86.0	(85.0)	88.3	(87.5)
NOVEMBER	7.8	6.5	5.6	9.0	7.3	6.8	86.0	(84.2)	88.8	(87.3)	83.3	(82.4)
DECEMBER	5.6	5.1	4.8	7.6	6.9	7.2	73.8	(72.5)	73.2	(72.4)	67.3	(66.9)
TOTAL	100.5	93.3	86.9	127.7	112.2	107.1	78.7	(77.2)	83.2	(82.0)	81.2	(80.3)

Table 3(d): Departures by Air to U.K. (Scheduled Flights), 1995 - 1997

<u>MONTH</u>	<u>(000's)</u>			<u>(000's)</u>			<u>%</u>					
	<u>SEATS USED</u>			<u>SEATS OFFERED</u>			<u>LOAD FACTOR</u>					
	<u>1995</u>	<u>1996</u>	<u>1997</u>	<u>1995</u>	<u>1996</u>	<u>1997</u>	<u>1995</u>		<u>1996</u>		<u>1997</u>	
							(i)	(ii)	(i)	(ii)	(i)	(ii)
JANUARY	5.5	5.3	4.7	7.8	7.7	6.8	70.8	(70.3)	69.4	(69.0)	68.5	(67.4)
FEBRUARY	5.2	5.6	5.1	6.9	8.2	6.4	75.1	(74.4)	68.1	(67.6)	79.4	(78.3)
MARCH	6.6	6.3	5.2	7.7	8.1	6.8	85.1	(84.6)	77.1	(76.4)	76.4	(75.5)
APRIL	8.3	7.0	6.1	10.3	8.7	6.7	80.5	(80.3)	81.0	(80.7)	90.1	(89.7)
MAY	7.3	7.0	7.7	10.4	8.7	9.6	69.8	(69.4)	79.9	(79.5)	79.8	(79.2)
JUNE	8.2	8.1	7.9	9.9	9.1	9.5	82.5	(82.0)	89.5	(89.1)	83.2	(83.0)
JULY	7.9	6.8	7.5	10.3	8.6	9.7	76.5	(76.0)	79.1	(79.0)	77.0	(76.7)
AUGUST	8.5	6.8	8.7	10.3	7.6	9.5	82.8	(82.4)	89.7	(89.5)	91.7	(91.4)
SEPTEMBER	8.4	8.0	8.8	9.6	8.5	10.5	87.6	(87.0)	93.5	(93.2)	83.8	(83.5)
OCTOBER	8.3	7.3	8.6	9.9	8.3	9.6	83.0	(82.4)	88.6	(88.2)	90.0	(89.6)
NOVEMBER	6.3	5.9	6.5	8.5	7.6	9.2	73.8	(73.1)	77.7	(77.1)	70.3	(70.0)
DECEMBER	4.8	4.1	4.7	7.9	7.0	10.1	61.5	(60.8)	58.8	(58.4)	46.3	(46.1)
TOTAL	85.3	78.2	81.5	109.5	98.1	104.4	77.8	(77.3)	79.6	(79.0)	78.1	(77.6)

Notes: (i) All load factors are calculated on the basis of actual figures. The total yearly figure has been rounded off from the actual figure and need not necessarily equal the sum of the rounded off monthly figures.

(ii) Revenue load factors exclude non-paying passengers and are also calculated on actual figures.

Table 3(e): Departures by Air to U.K. (Scheduled Flights), 1998 - 2000

MONTH	<u>(000's)</u>			<u>(000's)</u>			<u>%</u>					
	<u>SEATS USED</u>			<u>SEATS OFFERED</u>			<u>LOAD FACTOR</u>					
	<u>1998</u>	<u>1999</u>	<u>2000</u>	<u>1998</u>	<u>1999</u>	<u>2000</u>	<u>1998</u>		<u>1999</u>		<u>2000</u>	
							(i)	(ii)	(i)	(ii)	(i)	(ii)
JANUARY	6.0	6.3	6.5	9.5	8.5	11.1	63.1	(62.7)	74.1	(73.9)	58.8	(58.7)
FEBRUARY	5.3	5.7	6.0	8.7	7.5	9.8	60.7	(60.2)	75.1	(74.3)	61.5	(61.4)
MARCH	6.7	7.0	8.0	9.9	8.5	10.6	67.9	(67.9)	82.8	(82.7)	75.2	(74.9)
APRIL	8.2	8.7	9.1	10.0	9.8	10.1	81.9	(81.7)	89.0	(88.5)	89.4	(89.3)
MAY	8.0	8.9	9.9	11.2	12.5	13.3	71.3	(70.9)	71.0	(71.0)	74.5	(74.5)
JUNE	8.1	10.0	10.5	10.8	11.6	12.4	74.6	(74.2)	86.3	(86.3)	84.9	(84.8)
JULY	7.7	9.4	9.8	10.3	12.5	13.4	74.5	(74.3)	75.7	(75.7)	73.0	(72.9)
AUGUST	9.9	9.6	10.6	11.1	11.4	12.7	89.5	(89.4)	84.7	(84.7)	83.6	(83.5)
SEPTEMBER	9.2	10.2	11.7	10.4	11.8	12.8	88.5	(88.4)	86.3	(86.3)	91.4	(91.2)
OCTOBER	8.9	9.0	11.1	11.0	11.8	13.2	80.5	(80.3)	76.4	(76.4)	84.2	(84.1)
NOVEMBER	7.1	7.4	7.5	8.3	10.0	9.2	84.9	(84.4)	74.4	(74.4)	82.1	(82.0)
DECEMBER	5.0	5.1	5.7	7.6	10.6	9.3	66.2	(65.5)	48.0	(47.9)	61.3	(60.8)
TOTAL	90.1	97.4	106.6	119.0	126.5	138.1	75.7	(75.4)	77.0	(76.9)	77.2	(77.1)

Table 3(f): Departures by Air to U.K. (Scheduled Flights), 2001 - 2003

MONTH	<u>(000's)</u>			<u>(000's)</u>			<u>%</u>					
	<u>SEATS USED</u>			<u>SEATS OFFERED</u>			<u>LOAD FACTOR</u>					
	<u>2001</u>	<u>2002</u>	<u>2003</u>	<u>2001</u>	<u>2002</u>	<u>2003</u>	<u>2001</u>		<u>2002</u>		<u>2003</u>	
							(i)	(ii)	(i)	(ii)	(i)	(ii)
JANUARY	6.6	6.4	7.5	9.4	9.5	11.4	70.2	(70.2)	67.7	(67.7)	66.2	(66.2)
FEBRUARY	6.6	7.0	7.3	8.4	8.9	9.3	78.9	(78.9)	78.4	(78.4)	77.8	(77.8)
MARCH	7.9	8.4	10.1	9.8	11.1	13.2	81.0	(81.0)	75.7	(75.7)	76.6	(76.6)
APRIL	9.4	9.3	10.5	10.6	10.7	12.9	87.9	(87.9)	86.5	(86.5)	81.1	(81.1)
MAY	10.2	9.4	12.0	13.3	14.1	16.1	76.7	(76.7)	66.5	(66.5)	74.7	(74.6)
JUNE	11.0	10.5	12.8	12.9	13.3	15.4	85.7	(85.7)	79.1	(79.1)	83.3	(83.3)
JULY	10.3	10.8	12.0	13.5	14.8	16.1	76.0	(76.0)	72.9	(72.9)	74.7	(74.6)
AUGUST	11.5	13.1	14.6	13.4	14.5	16.1	85.4	(85.4)	90.5	(90.5)	91.0	(91.0)
SEPTEMBER	11.1	12.6	13.7	12.8	13.6	15.5	86.6	(86.6)	92.7	(92.7)	88.1	(88.1)
OCTOBER	11.3	11.7	12.9	13.5	14.4	15.9	83.9	(83.9)	81.3	(81.3)	81.0	(80.9)
NOVEMBER	8.5	8.6	10.9	10.7	10.7	14.1	79.9	(79.9)	80.6	(80.6)	77.4	(77.4)
DECEMBER	6.0	6.2	8.5	9.5	10.5	13.8	63.2	(63.2)	58.8	(58.8)	61.6	(61.6)
TOTAL	110.5	114.0	132.9	137.9	146.1	169.8	80.1	(80.1)	78.0	(78.0)	78.2	(78.2)

Notes: (i) All load factors are calculated on the basis of actual figures. The total yearly figure has been rounded off from the actual figure and need not necessarily equal the sum of the rounded off monthly figures.

(ii) Revenue load factors exclude non-paying passengers and are also calculated on actual figures.

Table 3(g): Departures by Air to U.K. (Scheduled Flights), 2004 - 2006

<u>MONTH</u>	<u>(000's)</u>			<u>(000's)</u>			<u>%</u>			
	<u>SEATS USED</u>			<u>SEATS OFFERED</u>			<u>LOAD FACTOR</u>			
	<u>2004</u>	<u>2005</u>	<u>2006</u>	<u>2004</u>	<u>2005</u>	<u>2006</u>	<u>2004</u>	<u>2005</u>	<u>2006</u>	
						(i)	(ii)	(i)	(i)	
JANUARY	8.7	11.9	10.5	12.4	15.8	15.7	70.0	(69.9)	75.4	66.6
FEBRUARY	9.1	10.2	10.6	11.9	14.4	14.8	76.2	(76.2)	70.8	72.1
MARCH	11.6	11.8	13.2	15.4	16.6	17.6	75.3	(75.3)	71.1	75.5
APRIL	13.0	14.4	15.5	16.7	17.6	17.8	77.7	(77.7)	81.9	87.0
MAY	12.3	14.4	15.8	20.2	21.1	19.3	61.0	(61.0)	68.8	82.1
JUNE	15.1	17.2	17.7	19.5	20.5	19.8	77.6	(77.6)	83.7	89.3
JULY	14.9	16.3	16.3	20.0	21.1	19.6	74.2	(74.2)	77.5	83.1
AUGUST	17.9	18.8	15.9	20.2	21.2	17.6	88.5	(88.5)	88.7	90.4
SEPTEMBER	17.1	19.0	15.4	19.6	20.4	17.2	87.2	(87.2)	92.8	89.5
OCTOBER	15.4	17.5	14.5	20.3	20.9	17.4	75.8	(75.8)	83.8	83.7
NOVEMBER	12.6	12.6	10.5	15.2	16.6	11.6	83.1	(83.1)	75.8	90.0
DECEMBER	9.8	9.6	9.5	15.0	15.1	13.6	64.9	(64.9)	63.3	70.0
TOTAL	157.3	173.7	165.4	206.4	221.4	201.9	76.2	(76.2)	78.5	81.9

Table 3(h): Departures by Air to U.K. (Scheduled Flights), 2007 - 2009

<u>MONTH</u>	<u>(000's)</u>			<u>(000's)</u>			<u>%</u>			
	<u>SEATS USED</u>			<u>SEATS OFFERED</u>			<u>LOAD FACTOR</u>			
	<u>2007</u>	<u>2008</u>	<u>2009</u>	<u>2007</u>	<u>2008</u>	<u>2009</u>	<u>2007</u>	<u>2008</u>	<u>2009</u>	
						(i)	(i)	(i)		
JANUARY	8.6	9.7	12.5	11.4	13.0	15.6	75.6	74.5	80.0	
FEBRUARY	7.9	8.5	12.2	10.8	10.4	15.4	73.0	81.7	79.1	
MARCH	8.9	10.3	15.0	12.7	12.3	18.7	69.8	83.4	80.3	
APRIL	10.9	15.8	16.6	13.9	18.3	19.3	78.2	86.3	85.9	
MAY	12.7	16.2	16.5	17.0	19.4	18.8	74.8	83.3	87.7	
JUNE	14.0	16.4	17.0	16.2	18.8	18.5	86.1	87.2	91.9	
JULY	14.1	18.0	16.6	16.9	21.5	19.0	83.7	83.7	87.5	
AUGUST	14.0	19.6	17.4	16.2	21.3	18.8	86.1	91.8	92.7	
SEPTEMBER	15.3	20.0	17.3	16.4	22.3	18.4	93.4	89.8	93.9	
OCTOBER	14.9	18.9	16.4	17.2	22.3	18.4	86.7	84.5	89.1	
NOVEMBER	12.0	15.8	12.0	13.2	19.4	14.1	91.1	81.2	85.2	
DECEMBER	9.4	13.5	9.7	12.7	18.5	13.1	73.6	72.9	74.1	
TOTAL	142.7	182.5	179.1	174.7	217.6	208.1	81.7	83.9	86.1	

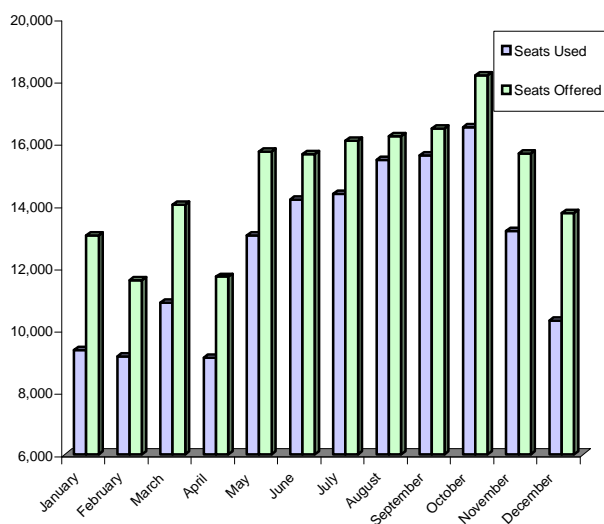
Notes: (i) All load factors are calculated on the basis of actual figures. The total yearly figure has been rounded off from the actual figure and need not necessarily equal the sum of the rounded off monthly figures.

(ii) Revenue load factors exclude non-paying passengers and are also calculated on actual figures.

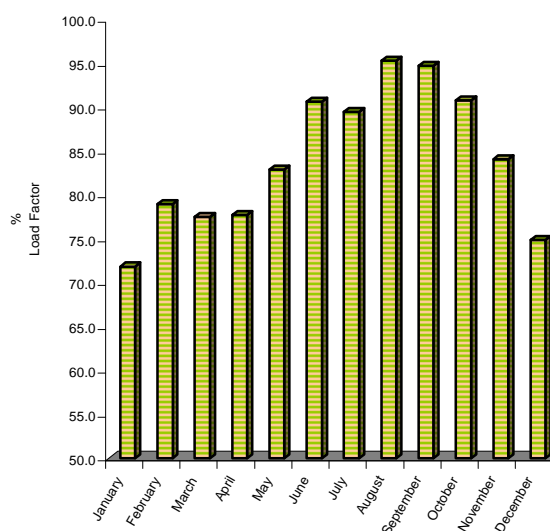
Table 3(i): Departures by Air to U.K. (Scheduled Flights), 2010

<u>MONTH</u>	<u>(000's)</u>		<u>%</u>
	<u>SEATS USED</u>	<u>SEATS OFFERED</u>	<u>LOAD FACTOR</u>
			(i)
JANUARY	9.4	13.0	71.8
FEBRUARY	9.1	11.6	78.9
MARCH	10.9	14.0	77.5
APRIL	9.1	11.7	77.7
MAY	13.0	15.7	82.9
JUNE	14.2	15.6	90.6
JULY	14.4	16.1	89.4
AUGUST	15.5	16.2	95.3
SEPTEMBER	15.6	16.5	94.7
OCTOBER	16.5	18.2	90.8
NOVEMBER	13.2	15.7	84.1
DECEMBER	10.3	13.8	74.9
TOTAL	151.1	178.1	84.8

DEPARTURES BY AIR TO U.K. (SCHEDULED FLIGHTS), 2010



DEPARTURES BY AIR TO U.K. (SCHEDULED FLIGHTS), LOAD FACTOR, 2010



Note: (i) Load factors are calculated on the basis of actual figures and exclude visitors in transit when applicable. The total yearly figures have been rounded off from the actual figures and need not necessarily equal the sum of the rounded off monthly figures.

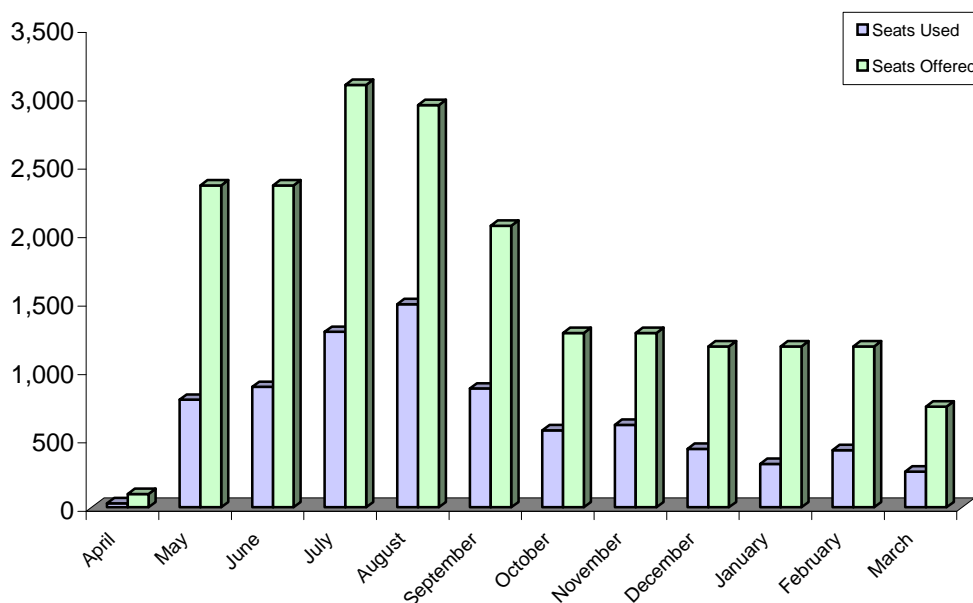
(ii) Flights to and from Heathrow re-commenced in October 2009.

(iii) Flights to and from Gatwick were reduced from 13 to 7 a week as from October 2009.

Table 3(j): Departures by Air to Spain (Scheduled Flights), 2010

MONTH	<u>(000's)</u>			<u>(000's)</u>			<u>%</u>		
	<u>SEATS USED</u>			<u>SEATS OFFERED</u>			<u>LOAD FACTOR (i)</u>		
	<u>2008</u>	<u>2009</u>	<u>2010</u>	<u>2008</u>	<u>2009</u>	<u>2010</u>	<u>2008</u>	<u>2009</u>	<u>2010</u>
JANUARY	0.4	0	0.3	1.1	0	1.2	35.7	0.0	27.0
FEBRUARY	0.4	0	0.4	1.3	0	1.2	34.5	0.0	35.5
MARCH	0.6	0	0.3	1.3	0	0.7	47.2	0.0	35.5
APRIL	0.3	0	0.0	1.1	0.1	0.0	25.1	29.6	0.0
MAY	0.4	0.8	0.0	1.3	2.4	0.0	34.0	33.4	0.0
JUNE	0.6	0.9	0.0	1.0	2.4	0.0	56.7	37.4	0.0
JULY	0.6	1.3	0.0	1.1	3.1	0.0	55.8	41.5	0.0
AUGUST	0.9	1.5	0.0	1.4	2.9	0.0	67.3	50.5	0.0
SEPTEMBER	0.5	0.9	0.0	1.1	2.1	0.0	45.7	42.2	0.0
OCTOBER	0.0	0.6	0.0	0.0	1.3	0.0	0.0	44.1	0.0
NOVEMBER	0.0	0.6	0.0	0.0	1.3	0.0	0.0	47.3	0.0
DECEMBER	0.0	0.4	0.0	0.0	1.2	0.0	0.0	36.3	0.0
TOTAL	4.8	6.9	1.0	10.7	16.6	3.1	44.8	41.7	32.2

**DEPARTURES BY AIR TO SPAIN (SCHEDULED FLIGHTS),
APRIL 2009 - MARCH 2010**



Notes: (i) Load factors are calculated on the basis of actual figures and exclude visitors in transit when applicable. The total yearly figures have been rounded off from the actual figures and need not necessarily equal the sum of the rounded off monthly figures.

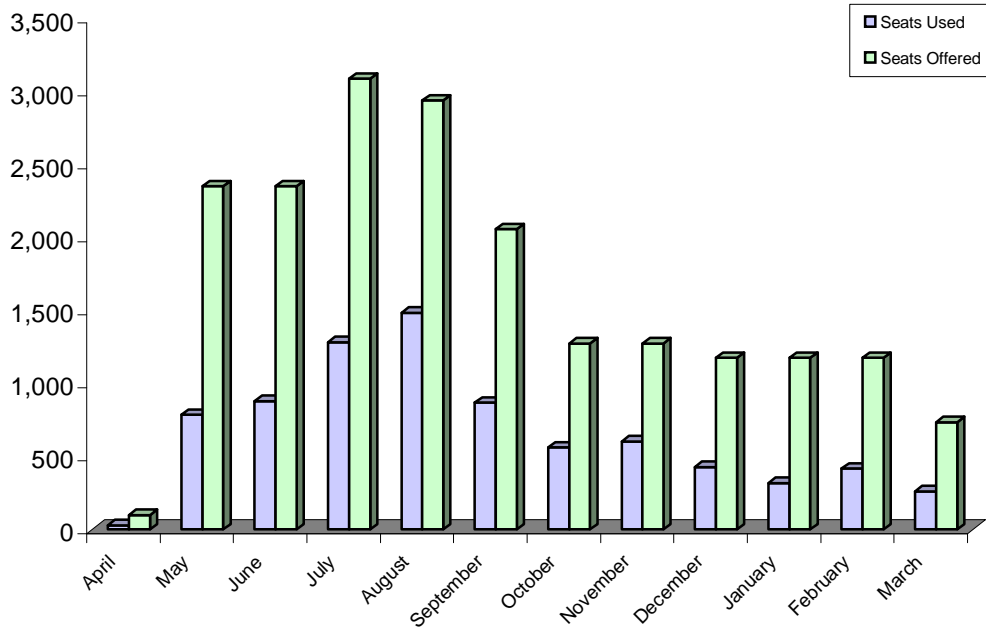
(ii) Flights to and from Barcelona commenced in July 2009 and ended in September 2009.

(iii) Flights to and from Madrid recommenced in April 2009 and ended in March 2010.

Table 3(j): Departures by Air to Spain (Scheduled Flights), 2010

MONTH	<u>(000's)</u>			<u>(000's)</u>			<u>%</u>		
	<u>SEATS USED</u>			<u>SEATS OFFERED</u>			<u>LOAD FACTOR (i)</u>		
	<u>2008</u>	<u>2009</u>	<u>2010</u>	<u>2008</u>	<u>2009</u>	<u>2010</u>	<u>2008</u>	<u>2009</u>	<u>2010</u>
JANUARY	0.4	0	0.3	1.1	0	1.2	35.7	0.0	27.0
FEBRUARY	0.4	0	0.4	1.3	0	1.2	34.5	0.0	35.5
MARCH	0.6	0	0.3	1.3	0	0.7	47.2	0.0	35.5
APRIL	0.3	0	0.0	1.1	0.1	0.0	25.1	29.6	0.0
MAY	0.4	0.8	0.0	1.3	2.4	0.0	34.0	33.4	0.0
JUNE	0.6	0.9	0.0	1.0	2.4	0.0	56.7	37.4	0.0
JULY	0.6	1.3	0.0	1.1	3.1	0.0	55.8	41.5	0.0
AUGUST	0.9	1.5	0.0	1.4	2.9	0.0	67.3	50.5	0.0
SEPTEMBER	0.5	0.9	0.0	1.1	2.1	0.0	45.7	42.2	0.0
OCTOBER	0.0	0.6	0.0	0.0	1.3	0.0	0.0	44.1	0.0
NOVEMBER	0.0	0.6	0.0	0.0	1.3	0.0	0.0	47.3	0.0
DECEMBER	0.0	0.4	0.0	0.0	1.2	0.0	0.0	36.3	0.0
TOTAL	4.8	6.9	1.0	10.7	16.6	3.1	44.8	41.7	32.2

**DEPARTURES BY AIR TO SPAIN (SCHEDULED FLIGHTS),
APRIL 2009 - MARCH 2010**



Notes: (i) Load factors are calculated on the basis of actual figures and exclude visitors in transit when applicable. The total yearly figures have been rounded off from the actual figures and need not necessarily equal the sum of the rounded off monthly figures.

(iii) Flights to and from Barcelona commenced in July 2009 and ended in September 2009.

(ii) Flights to and from Madrid recommenced in April 2009 and ended in March 2010.

Table 4(a): Arrivals by Air from U.K. (Charter Flights), 1990 - 1992,1998

<u>MONTH</u>	<u>(000's)</u>				<u>(000's)</u>				<u>%</u>			
	<u>SEATS USED</u>				<u>SEATS OFFERED</u>				<u>LOAD FACTOR</u>			
	<u>1990</u>	<u>1991</u>	<u>1992</u>	<u>1998</u>	<u>1990</u>	<u>1991</u>	<u>1992</u>	<u>1998</u>	<u>1990</u>	<u>1991</u>	<u>1992</u>	<u>1998</u>
JANUARY	0.8		0.1	-	1.0	0.2	0.1	-	79.5	5.8	96.9	-
FEBRUARY	1.0	-	-	-	1.0	-	-	-	91.7	-	-	-
MARCH	1.3	0.1	-	-	1.3	0.1	-	-	96.9	90.2	-	-
APRIL	0.8	-	-	-	1.3	-	-	-	58.1	-	-	-
MAY	-	1.5	-	-	-	1.9	-	-	-	79.3	-	-
JUNE	-	1.8	-	-	-	2.5	-	-	-	74.2	-	-
JULY	0.3	2.1	0.1	-	0.4	2.4	0.1	-	90.8	89.0	93.3	-
AUGUST	0.2	2.7	-	-	0.3	3.1	-	-	65.1	87.6	-	-
SEPTEMBER	0.2	1.8	-	-	0.5	2.3	-	-	42.0	81.2	-	-
OCTOBER	-	1.0	-	-	-	1.8	-	0.1	-	57.0	-	58.0
NOVEMBER	0.2	-	-	0.7	0.5	0.1	-	0.7	52.6	6.1	-	99.3
DECEMBER	-	-	0.1	0.3	-	-	0.1	0.4	-	-	100.0	79.4
TOTAL	4.7	9.1	0.4	1.1	6.2	12.1	0.4	1.2	75.9	75.2	96.9	90.1

Table 4(b): Arrivals by Air from U.K. (Charter Flights), 1999 - 2002

<u>MONTH</u>	<u>(000's)</u>				<u>(000's)</u>				<u>%</u>			
	<u>SEATS USED</u>				<u>SEATS OFFERED</u>				<u>LOAD FACTOR</u>			
	<u>1999</u>	<u>2000</u>	<u>2001</u>	<u>2002</u>	<u>1999</u>	<u>2000</u>	<u>2001</u>	<u>2002</u>	<u>1999</u>	<u>2000</u>	<u>2001</u>	<u>2002</u>
JANUARY	-	0.1	-	-	0.1	0.1	-	-	5.6	82.6	100.0	-
FEBRUARY	-	-	-	-	-	-	-	-	-	-	-	-
MARCH	0.2	-	-	0.1	0.2	-	-	0.1	82.5	-	100.0	100.0
APRIL	0.1	0.2	0.1	0.2	0.1	0.3	0.3	0.2	56.9	65.8	42.4	100.0
MAY	-	-	-	0.1	-	-	-	0.1	-	-	-	100.0
JUNE	-	-	-	0.1	-	-	-	0.1	-	-	-	100.0
JULY	-	-	-	0.1	-	-	-	0.1	-	-	-	100.0
AUGUST	-	-	-	-	-	0.1	-	-	-	94.0	-	-
SEPTEMBER	-	0.1	-	-	0.2	0.1	-	-	15.6	56.9	-	-
OCTOBER	0.1	-	-	0.1	0.2	-	-	0.1	46.1	-	55.1	100.0
NOVEMBER	-	0.1	-	-	-	0.2	-	-	-	34.4	-	-
DECEMBER	0.1	-	-	0.1	0.2	-	-	0.1	73.3	67.5	-	100.0
TOTAL	0.5	0.5	0.2	0.9	1.0	0.8	0.3	0.9	48.9	62.4	50.9	100.0

Notes: (i) Figures exclude MoD charter flights. No charter operations were recorded during 1993 - 1997.

(ii) The total yearly figures have been rounded off from the actual figures and need not necessarily equal the sum of the rounded off monthly figures.

Table 4(c): Arrivals by Air from U.K. (Charter Flights), 2003 - 2006

<u>MONTH</u>	<u>(000's)</u>				<u>(000's)</u>				<u>%</u>			
	<u>SEATS USED</u>				<u>SEATS OFFERED</u>				<u>LOAD FACTOR</u>			
	<u>2003</u>	<u>2004</u>	<u>2005</u>	<u>2006</u>	<u>2003</u>	<u>2004</u>	<u>2005</u>	<u>2006</u>	<u>2003</u>	<u>2004</u>	<u>2005</u>	<u>2006</u>
JANUARY	0.2	-	-	-	0.3	-	-	-	61.6	-	-	-
FEBRUARY	0.8	-	-	-	1.4	-	-	-	60.1	-	-	-
MARCH	0.2	-	-	-	0.5	0.1	-	-	41.2	17.0	-	-
APRIL	0.2	-	-	-	0.3	-	-	-	55.2	-	-	-
MAY	0.2	0.2	-	-	0.3	0.2	-	-	71.8	91.3	-	-
JUNE	-	-	0.2	0.2	-	-	0.2	0.2	-	-	90.9	69.4
JULY	-	0.2	-	0.2	-	0.3	-	0.3	-	63.5	-	84.4
AUGUST	-	-	-	0.2	-	-	-	0.2	-	-	-	97.3
SEPTEMBER	0.2	0.1	0.2	-	0.3	0.2	0.2	-	63.2	64.4	97.3	-
OCTOBER	0.2	0.1	0.1	-	0.2	0.1	0.2	-	87.6	100.0	88.1	-
NOVEMBER	-	0.2	0.2	-	-	0.2	0.2	-	-	93.6	97.3	-
DECEMBER	-	-	-	-	-	-	-	-	-	-	-	-
TOTAL	2.0	0.9	0.8	0.6	3.3	1.2	0.8	0.7	59.9	74.4	93.7	83.8

Table 4(d): Arrivals by Air from U.K. (Charter Flights), 2007 - 2010

<u>MONTH</u>	<u>(000's)</u>				<u>(000's)</u>				<u>%</u>			
	<u>SEATS USED</u>				<u>SEATS OFFERED</u>				<u>LOAD FACTOR</u>			
	<u>2007</u>	<u>2008</u>	<u>2009</u>	<u>2010</u>	<u>2007</u>	<u>2008</u>	<u>2009</u>	<u>2010</u>	<u>2007</u>	<u>2008</u>	<u>2009</u>	<u>2010</u>
JANUARY	-	-	-	-	-	-	-	-	-	-	-	-
FEBRUARY	-	-	-	-	0.1	-	-	-	32.8	-	-	-
MARCH	-	-	-	-	-	-	-	-	-	-	-	-
APRIL	-	-	-	-	0.1	-	-	-	50.0	-	-	-
MAY	-	-	-	0.2	0.4	-	-	0.4	-	-	-	56.7
JUNE	-	-	-	-	0.2	-	-	-	-	-	-	-
JULY	0.4	-	-	-	0.5	-	-	-	67.9	-	-	-
AUGUST	-	-	0.2	-	-	-	0.2	-	-	-	83.1	-
SEPTEMBER	-	-	-	0.3	0.2	-	-	0.5	-	-	-	67.3
OCTOBER	-	-	-	-	-	-	-	-	-	-	-	-
NOVEMBER	-	-	-	-	0.2	-	-	-	20.6	-	-	-
DECEMBER	-	-	-	-	0.1	-	-	-	-	-	-	-
TOTAL	0.5	-	0.2	0.5	1.8	-	0.2	0.8	25.0	-	83.1	62.6

Notes: (i) Figures exclude MoD charter flights.

(ii) The total yearly figures have been rounded off from the actual figures and need not necessarily equal the sum of the rounded off monthly figures.

Table 5(a): Departures by Air to U.K. (Charter Flights), 1990 - 1992,1998

<u>MONTH</u>	<u>(000's)</u>				<u>(000's)</u>				<u>%</u>			
	<u>SEATS USED</u>				<u>SEATS OFFERED</u>				<u>LOAD FACTOR</u>			
	<u>1990</u>	<u>1991</u>	<u>1992</u>	<u>1998</u>	<u>1990</u>	<u>1991</u>	<u>1992</u>	<u>1998</u>	<u>1990</u>	<u>1991</u>	<u>1992</u>	<u>1998</u>
JANUARY	0.8	0.1	0.1	-	1.0	0.2	0.1	-	77.3	64.6	93.1	-
FEBRUARY	0.9	-	-	-	1.0	-	-	-	83.6	-	-	-
MARCH	1.2	0.1	-	-	1.3	0.1	-	-	93.2	84.8	-	-
APRIL	1.0	-	-	-	1.3	-	-	-	77.9	-	-	-
MAY	-	0.9	-	-	-	1.9	-	-	-	47.6	-	-
JUNE	-	1.8	-	-	-	2.5	-	-	-	74.2	-	-
JULY	0.2	1.8	0.1	-	0.4	2.4	0.1	-	60.8	74.9	93.3	-
AUGUST	0.2	2.9	-	-	0.3	3.0	-	-	62.4	94.2	-	-
SEPTEMBER	0.2	2.0	-	-	0.5	2.3	-	-	45.1	87.6	-	-
OCTOBER	-	1.6	-	-	-	2.0	-	0.1	-	78.6	-	46.0
NOVEMBER	0.2	0.2	-	0.6	0.5	0.3	-	0.7	53.2	88.1	-	88.1
DECEMBER	-	-	0.3	0.3	-	-	0.2	0.4	-	-	75.4	57.3
TOTAL	4.7	9.7	0.4	0.9	6.2	12.4	0.5	1.2	75.9	78.2	84.3	74.8

Table 5(b): Departures by Air to U.K. (Charter Flights), 1999 - 2002

<u>MONTH</u>	<u>(000's)</u>				<u>(000's)</u>				<u>%</u>			
	<u>SEATS USED</u>				<u>SEATS OFFERED</u>				<u>LOAD FACTOR</u>			
	<u>1999</u>	<u>2000</u>	<u>2001</u>	<u>2002</u>	<u>1999</u>	<u>2000</u>	<u>2001</u>	<u>2002</u>	<u>1999</u>	<u>2000</u>	<u>2001</u>	<u>2002</u>
JANUARY	0.1	0.1	-	-	0.1	0.1	-	-	81.9	82.6	-	-
FEBRUARY	-	-	-	-	-	-	-	-	-	-	-	-
MARCH	0.1	-	-	0.1	0.2	-	-	0.1	54.1	-	-	100.0
APRIL	0.1	0.2	0.1	0.2	0.1	0.3	0.3	0.2	100.0	65.8	42.4	100.0
MAY	-	-	-	0.1	-	-	-	0.1	-	-	-	100.0
JUNE	-	-	-	0.1	-	-	-	0.1	-	-	-	100.0
JULY	-	-	-	0.1	-	-	-	0.1	-	-	-	100.0
AUGUST	-	-	-	-	-	0.1	-	-	-	94.0	-	-
SEPTEMBER	-	0.1	-	-	0.2	0.1	-	-	15.0	56.9	-	-
OCTOBER	0.1	-	-	0.1	0.2	-	-	0.1	54.4	-	-	100.0
NOVEMBER	-	0.1	-	-	-	0.2	-	-	-	34.4	-	-
DECEMBER	-	-	-	0.1	0.2	-	-	0.1	-	67.5	-	53.8
TOTAL	0.5	0.5	0.2	0.9	1.0	0.8	0.4	0.9	48.8	62.4	42.4	94.6

Notes: (i) Figures exclude MoD charter flights. No charter operations were recorded during 1993 - 1997.

(ii) The total yearly figures have been rounded off from the actual figures and need not necessarily equal the sum of the rounded off monthly figures.

Table 5(c): Departures by Air to U.K. (Charter Flights), 2003 - 2006

<u>MONTH</u>	<u>(000's)</u>				<u>(000's)</u>				<u>%</u>			
	<u>SEATS USED</u>				<u>SEATS OFFERED</u>				<u>LOAD FACTOR</u>			
	<u>2003</u>	<u>2004</u>	<u>2005</u>	<u>2006</u>	<u>2003</u>	<u>2004</u>	<u>2005</u>	<u>2006</u>	<u>2003</u>	<u>2004</u>	<u>2005</u>	<u>2006</u>
JANUARY	0.1	-	-	-	0.3	-	-	-	43.8	-	-	-
FEBRUARY	0.9	-	-	-	1.4	-	-	-	64.5	-	-	-
MARCH	0.2	-	-	-	0.5	0.1	-	-	42.0	25.0	-	-
APRIL	0.2	-	-	-	0.3	-	-	-	62.8	-	-	-
MAY	0.2	0.2	-	-	0.3	0.2	-	-	63.1	90.4	-	-
JUNE	-	-	0.2	0.2	-	-	0.2	0.2	-	-	80.8	95.0
JULY	-	0.2	-	0.2	-	0.3	-	0.3	-	59.0	-	85.8
AUGUST	-	-	-	0.1	-	-	-	0.2	-	-	-	63.5
SEPTEMBER	0.1	0.2	0.2	-	0.3	0.2	0.2	-	41.9	86.8	68.9	-
OCTOBER	0.2	0.1	0.2	-	0.2	0.1	0.2	-	85.4	100.0	98.8	-
NOVEMBER	-	0.2	0.2	-	-	0.2	0.2	-	-	94.1	89.0	-
DECEMBER	-	-	-	-	-	-	-	-	-	-	-	-
TOTAL	1.9	0.9	0.7	0.6	3.3	1.2	0.8	0.7	58.2	78.1	83.5	81.8

Table 5(d): Departures by Air to U.K. (Charter Flights), 2007 - 2010

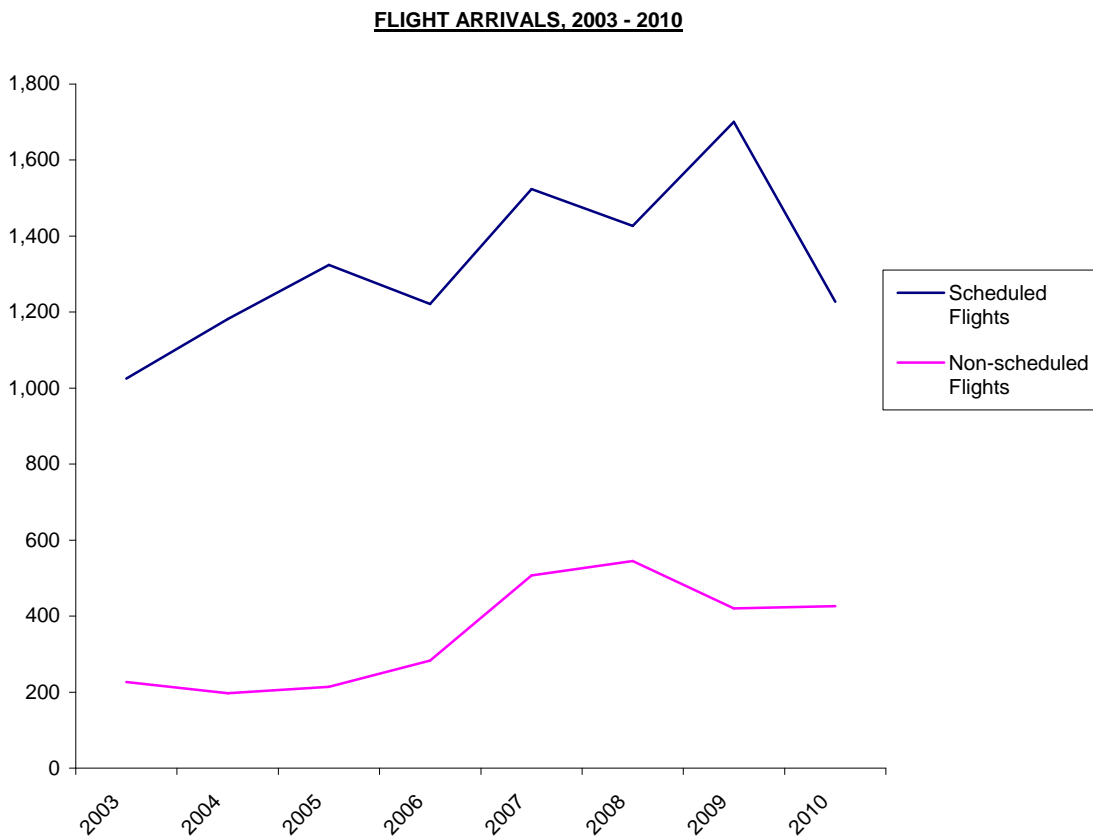
<u>MONTH</u>	<u>(000's)</u>				<u>(000's)</u>				<u>%</u>			
	<u>SEATS USED</u>				<u>SEATS OFFERED</u>				<u>LOAD FACTOR</u>			
	<u>2007</u>	<u>2008</u>	<u>2009</u>	<u>2010</u>	<u>2007</u>	<u>2008</u>	<u>2009</u>	<u>2010</u>	<u>2007</u>	<u>2008</u>	<u>2009</u>	<u>2010</u>
JANUARY	-	-	-	-	-	-	-	-	-	-	-	-
FEBRUARY	-	-	-	-	0.1	-	-	-	32.8	-	-	-
MARCH	-	-	-	-	-	-	-	-	-	-	-	-
APRIL	-	-	-	-	0.1	-	-	-	50.0	-	-	-
MAY	0.2	-	-	0.2	0.4	-	-	0.4	59.6	-	-	65.3
JUNE	0.2	-	-	-	0.2	-	-	-	100.0	-	-	-
JULY	0.2	-	-	-	0.5	-	-	-	42.0	-	-	-
AUGUST	-	-	0.2	-	-	-	0.2	-	78.6	-	88.6	-
SEPTEMBER	0.2	-	-	0.3	0.2	-	-	0.5	73.5	-	-	73.4
OCTOBER	-	-	-	-	0	-	-	-	-	-	-	-
NOVEMBER	-	-	-	-	0.2	-	-	-	18.6	-	-	-
DECEMBER	0.1	-	-	-	0.1	-	-	-	73.6	-	-	-
TOTAL	1.0	-	0.2	0.6	1.8	-	0.2	0.8	56.0	-	88.6	69.8

Notes: (i) Figures exclude MoD charter flights.

(ii) The total yearly figures have been rounded off from the actual figures and need not necessarily equal the sum of the rounded off monthly figures.

Table 6: Flight Arrivals, 2003- 2010

<u>YEAR</u>	<u>SCHEDULED FLIGHTS</u>	<u>NON-SCHEDULED FLIGHTS</u>	<u>TOTAL FLIGHTS</u>
2003	1,025	227	1,252
2004	1,182	197	1,379
2005	1,324	214	1,538
2006	1,221	283	1,504
2007	1,524	507	2,031
2008	1,427	545	1,972
2009	1,701	420	2,121
2010	1,227	426	1,653



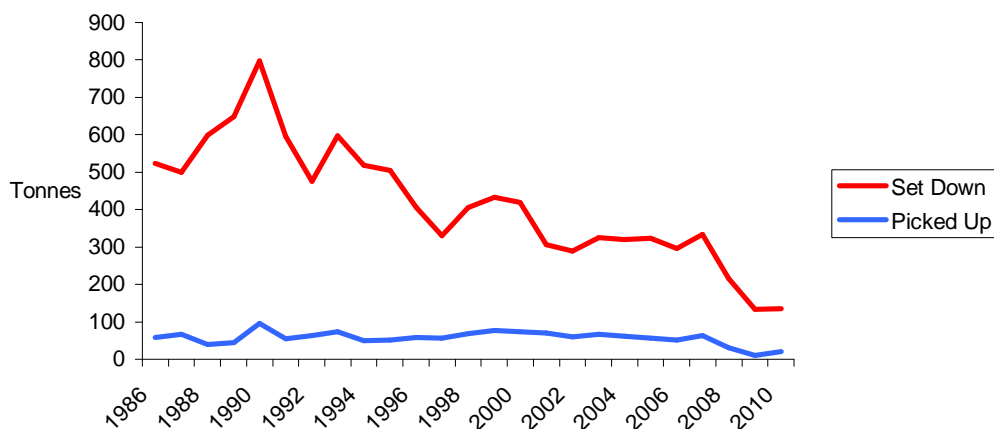
Note: (i) Non-scheduled flights include commercial charters, business jets and light aircraft.

Table 7: Commercial Freight, Set Down/Picked Up, Gibraltar, 1986 - 2010

(000's kgs)

<u>YEAR</u>	<u>SET DOWN</u>	<u>PICKED UP</u>
1986	523	59
1987	499	67
1988	599	40
1989	648	45
1990	797	95
1991	596	54
1992	476	64
1993	597	74
1994	518	49
1995	504	52
1996	406	58
1997	330	57
1998	406	69
1999	433	77
2000	419	74
2001	306	71
2002	289	60
2003	325	66
2004	320	61
2005	324	57
2006	296	52
2007	333	63
2008	216	31
2009	134	11
2010	135	20

COMMERCIAL FREIGHT, 1986 - 2010



Note: The figures relate to freight from/to all destinations.