



GOVERNMENT OF GIBRALTAR

**AIR TRAFFIC
SURVEY
2004**

STATISTICS OFFICE

- C O N T E N T S -

		<u>PAGE</u>
A.	Preface	1
B.	Definitions	2
	Tables and Charts	3 - 40

LIST OF TABLES

Table 1:	Arrivals/Departures by Air from/to U.K. 1980 - 2004	3
Chart	Arrivals by Air from U.K. 1980 - 2004	4
Table 2(a)	Arrivals by Air from U.K. (Scheduled flights) 1980 - 1983	5
Table 2(b)	Arrivals by Air from U.K. (Scheduled flights) 1984 - 1987	6
Table 2(c)	Arrivals by Air from U.K. (Scheduled flights) 1988 - 1991	7
Table 2(d)	Arrivals by Air from U.K. (Scheduled flights) 1992 - 1995	8
Table 2(e)	Arrivals by Air from U.K. (Scheduled flights) 1996 - 1999	9
Table 2(f)	Arrivals by Air from U.K. (Scheduled flights) 2000 - 2003	10
Table 2(g)	Arrivals by Air from U.K. (Scheduled flights) 2004	11
Chart	Air Arrivals from U.K. (Scheduled flights) 2004	12
Chart	Arrivals by Air from U.K. (Scheduled flights) 2004	13
Table 3(a)	Departures by Air to U.K. (Scheduled flights) 1980 -1982	14
Table 3(b)	Departures by Air to U.K. (Scheduled flights) 1983 -1985	15
Table 3(c)	Departures by Air to U.K. (Scheduled flights) 1986 -1988	16
Table 3(d)	Departures by Air to U.K. (Scheduled flights) 1989 -1991	17
Table 3(e)	Departures by Air to U.K. (Scheduled flights) 1992 -1994	18
Table 3(f)	Departures by Air to U.K. (Scheduled flights) 1995 -1997	19
Table 3(g)	Departures by Air to U.K. (Scheduled flights) 1998 -2000	20
Table 3(h)	Departures by Air to U.K. (Scheduled flights) 2001 -2003	21
Table 3(i)	Departures by Air to U.K. (Scheduled flights) 2004	22
Chart	Departures by Air to U.K. (Scheduled flights) 2004	23
Chart	Departures by Air to U.K. (Scheduled flights) 2004	24
Table 4(a)	Arrivals by Air from U.K. (Charter flights) 1984 - 1987	25
Table 4(b)	Arrivals by Air from U.K. (Charter flights) 1988 - 1991	26
Table 4(c)	Arrivals by Air from U.K. (Charter flights) 1992, 1998 -2000	27
Table 4(d)	Arrivals by Air from U.K. (Charter flights) 2001 - 2003	28
Table 4(e)	Arrivals by Air (Charter flights) 2004	29
Table 5(a)	Departures by Air to U.K. (Charter flights) 1984 - 1987	30
Table 5(b)	Departures by Air to U.K. (Charter flights) 1988 - 1991	31
Table 5(c)	Departures by Air to U.K. (Charter flights) 1992, 1998 - 2000	32
Table 5(d)	Departures by Air to U.K. (Charter flights) 2001 - 2003	33
Table 5(e)	Departures by Air (Charter flights) 2004	34
Table 6(a)	Arrivals by Air from Morocco (Scheduled flights) 1993 - 996	35
Table 6(b)	Arrivals by Air from Morocco (Scheduled flights) 1997 - 2000	36
Table 7(a)	Departures by Air to Morocco (Scheduled flights)1993 - 1996	37
Table 7(b)	Departures by Air to Morocco (Scheduled flights)1997 - 2000	38
Table 8	Commercial Freight, Set Down/Picked Up, Gibraltar 1980 - 2004	39
Chart	Commercial Freight 1980 - 2004	40

A. PREFACE

The Statistics (Air Traffic Survey) Order 1971 requires that a report and summary of the findings of the Air Traffic Survey be laid before the House of Assembly. This is the twenty-ninth report and contains a summary of statistics collected for the years 1980 to 2004.

The report contains statistical data on air traffic operations between Gibraltar and other destinations for both scheduled and charter airlines. The report also includes some general data on commercial freight.

I must express my thanks to the Airlines and to Terminal Management Ltd for their continued co-operation in the conduct of this Survey.

MARCH 2005

GOVERNMENT STATISTICIAN

B. DEFINITIONS

- (a) Passenger Load Factor: $\frac{\text{All seats used}}{\text{All seats offered (less in-transits)}} \times 100$
- (b) Revenue Load Factor: $\frac{\text{All seats used by "paying" passengers}}{\text{All seats offered (less in-transits)}} \times 100$
- (c) Scheduled Services: are those performed according to a published timetable including those supplementary thereto, and available for use by members of the public.
- (d) Charter Services: includes all air passengers transport flights, other than scheduled services and Ministry of Defence Charters.

Table 1: Arrivals/Departures by Air from/to UK 1980 - 2004

YEAR	ARRIVALS (000's)						DEPARTURES (000's)					
	TOTAL		SCHEDULED		CHARTER		TOTAL		SCHEDULED		CHARTER	
	Seats Offered	Seats Used	Seats Offered	Seats Used	Seats Offered	Seats Used	Seats Offered	Seats Used	Seats Offered	Seats Used	Seats Offered	Seats Used
1980	62.8	50.0	30.2	22.9	32.7	27.1	62.7	50.9	30.0	23.1	32.7	27.8
1981	55.6	45.5	29.2	23.6	26.4	21.9	55.7	46.7	29.1	23.4	26.5	23.3
1982	60	47.5	35.6	27.0	24.4	20.5	60.0	47.6	35.6	26.7	24.3	20.9
1983	65.6	46.7	40.4	26.3	25.2	20.5	65.6	47.5	40.4	26.8	25.2	20.7
1984	61.3	50.3	34.6	27.4	26.7	22.9	61.2	51.0	34.6	27.6	26.7	23.4
1985	79.0	67.6	59.5	50.3	19.5	17.3	79.0	67.7	59.7	50.0	19.3	17.7
1986	101.7	83.2	96.9	79.1	4.8	4.1	101.8	84.1	96.9	80.1	4.9	4.0
1987	145.9	113.2	129.8	98.1	16.1	15.1	145.4	114.8	129.3	100.9	16.1	13.9
1988	208.7	151.2	196.0	139.6	12.7	11.6	208.3	156.1	195.6	144.6	12.7	11.5
1989	239.4	173.2	231.6	167.6	7.8	5.6	237.8	179.8	230.0	174.0	7.8	5.8
1990	172.0	141.5	165.8	136.8	6.2	4.7	175.1	148.5	168.9	143.8	6.2	4.7
1991	138.1	104.0	126.0	94.9	12.1	9.1	140.2	106.3	127.8	96.6	12.4	9.7
1992	127.4	98.1	127.0	97.7	0.4	0.4	128.2	101.0	127.7	100.5	0.5	0.4
1993	111.5	91.3	111.4	91.2	0.1	0.1	112.2	93.3	112.2	93.3	0.0	0.0
1994	106.4	85.2	106.4	85.2	0.0	0.0	107.1	86.9	207.2	86.9	0.0	0.0
1995	109.4	83.8	109.4	83.8	0.0	0.0	109.5	85.3	109.5	85.3	0.0	0.0
1996	98.7	78.1	98.7	78.1	0.0	0.0	98.1	78.2	98.1	78.2	0.0	0.0
1997	106.6	83.2	106.6	83.2	0.0	0.0	104.4	81.5	104.4	81.5	0.0	0.0
1998	121.5	92.0	120.4	91.0	1.2	1.1	120.2	91.0	119.0	90.1	1.2	0.9
1999	127.5	98.3	126.5	97.8	1.0	0.5	127.5	97.9	126.5	97.4	1.0	0.5
2000	139.4	104.3	138.6	103.7	0.8	0.5	138.9	107.1	138.1	106.6	0.8	0.5
2001	138.0	109.0	137.7	108.8	0.3	0.2	138.2	110.6	137.9	110.5	0.4	0.2
2002	147.2	116.6	146.3	115.7	0.9	0.9	147.0	114.8	146.1	114.0	0.9	0.9
2003	173.5	135.0	170.3	133.0	3.3	2.0	173.1	134.8	169.8	132.9	3.3	1.9
2004	207.6	157.9	206.4	157.0	1.2	0.9	207.6	158.3	206.4	157.3	1.2	0.9

Note: Charter flights as from 1998 include all destinations. The yearly totals have been rounded off from the actual figure and need not necessarily equal the sum of the rounded off sub-totals.

ARRIVALS BY AIR FROM UK - 1980 - 2004

(000's)

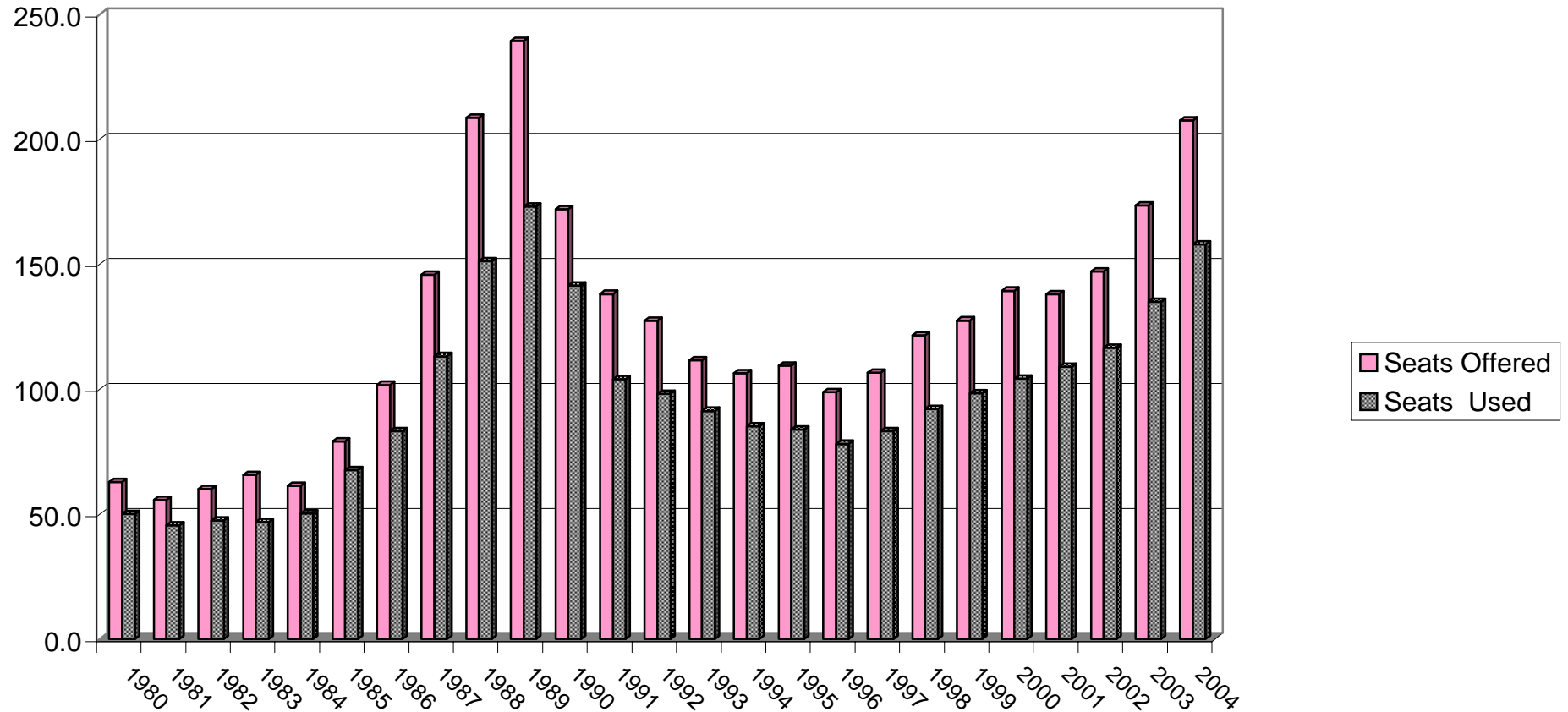


Table 2(a): Arrivals by Air from U.K. (Scheduled Flights) 1980 -1983

<u>MONTH</u>	<u>(000's)</u>				<u>(000's)</u>				<u>% *</u>			
	<u>SEATS USED</u>				<u>SEATS OFFERED</u>				<u>LOAD FACTOR</u>			
	<u>1980</u>	<u>1981</u>	<u>1982</u>	<u>1983</u>	<u>1980</u>	<u>1981</u>	<u>1982</u>	<u>1983</u>	<u>1980</u>	<u>1981</u>	<u>1982</u>	<u>1983</u>
JANUARY	1.6	1.5	1.7	1.6	2.8	2.1	2.2	2.9	57.3	70.6	78.2	55.0
FEBRUARY	1.5	1.5	1.8	1.5	2.7	1.9	2.2	2.6	57.8	81.1	77.5	59.0
MARCH	2.3	1.9	2.0	2.1	2.8	2.2	2.1	3.0	83.6	88.2	95.9	70.3
APRIL	1.7	2.2	2.8	2.3	2.4	2.7	3.2	3.9	70.3	79.3	86.7	59.2
MAY	2.0	1.9	2.3	2.2	2.5	2.7	3.2	4.0	79.2	67.7	72.4	55.4
JUNE	2.0	1.9	2.3	2.4	2.4	2.6	3.3	3.9	81.1	72.5	70.9	60.3
JULY	2.5	2.4	2.7	3.0	2.8	2.8	3.5	4.0	89.4	85.5	77.8	74.4
AUGUST	2.4	2.4	2.8	2.8	2.7	2.6	3.3	4.0	91.1	93.3	82.4	70.5
SEPTEMBER	1.7	1.9	2.4	2.7	2.5	2.7	3.4	3.9	67.4	71.9	70.8	68.0
OCTOBER	2.3	2.3	2.3	2.3	2.8	2.7	3.4	3.6	81.3	85.2	69.0	63.0
NOVEMBER	1.3	1.8	1.9	1.6	1.9	2.1	2.9	2.2	70.7	85.0	65.2	71.1
DECEMBER	1.6	1.9	2.0	1.8	1.9	2.1	2.9	2.4	82.6	91.4	70.5	77.1
TOTAL	22.9	23.6	27.0	26.3	30.2	29.2	35.6	40.4	76.0	80.7	75.9	65.0

Note: * All load factors are calculated on the basis of actual figures. The total yearly figure has been rounded off from the actual figure and need not necessarily equal the sum of the rounded off monthly figures.

Table 2(b): Arrivals by Air from U.K. (Scheduled Flights) 1984 -1987

<u>MONTH</u>	<u>(000's)</u>				<u>(000's)</u>				<u>% *</u>			
	<u>SEATS USED</u>				<u>SEATS OFFERED</u>				<u>LOAD FACTOR</u>			
	<u>1984</u>	<u>1985</u>	<u>1986</u>	<u>1987</u>	<u>1984</u>	<u>1985</u>	<u>1986</u>	<u>1987</u>	<u>1984</u>	<u>1985</u>	<u>1986</u>	<u>1987</u>
JANUARY	1.5	2.1	4.1	4.7	2.6	2.6	7.0	7.8	59.8	79.1	58.6	60.3
FEBRUARY	1.7	2.0	4.4	5.0	2.1	2.2	5.9	6.6	81.8	90.9	75.2	76.2
MARCH	2.1	3.0	6.5	7.0	2.4	3.2	7.1	8.6	87.2	97.0	92.2	81.9
APRIL	2.5	3.9	5.6	7.6	3.1	4.6	7.2	8.4	79.2	84.8	77.4	90.0
MAY	2.3	3.9	7.4	9.0	3.2	4.4	8.7	11.4	70.1	89.5	84.8	79.3
JUNE	2.2	4.3	7.1	8.1	3.3	5.0	8.5	12.0	68.9	86.4	83.2	67.7
JULY	2.9	5.4	8.3	10.6	3.4	5.7	9.0	12.4	86.1	95.2	92.2	85.3
AUGUST	2.8	5.8	8.7	10.7	3.2	6.5	9.8	12.4	86.7	89.2	88.2	85.9
SEPTEMBER	2.5	4.7	7.6	8.7	3.2	5.8	8.9	11.6	76.4	79.8	85.0	74.8
OCTOBER	2.6	5.1	7.8	9.8	3.2	5.8	9.1	12.4	79.3	86.7	85.4	79.4
NOVEMBER	2.0	4.6	5.1	7.7	2.4	6.3	7.4	13.0	85.0	73.4	69.4	59.4
DECEMBER	2.3	5.5	6.5	8.7	2.5	7.4	8.2	12.9	90.1	74.1	78.6	67.4
TOTAL	27.4	50.3	79.1	97.6	34.6	59.5	96.9	129.5	79.0	84.5	81.6	75.2

Note: * All load factors are calculated on the basis of actual figures. The total yearly figure has been rounded off from the actual figure and need not necessarily equal the sum of the rounded off monthly figures.

Table 2(c): Arrivals by Air from U.K. (Scheduled Flights) 1988 -1991

<u>MONTH</u>	<u>(000's)</u>				<u>(000's)</u>				<u>% *</u>			
	<u>SEATS USED</u>				<u>SEATS OFFERED</u>				<u>LOAD FACTOR</u>			
	<u>1988</u>	<u>1989</u>	<u>1990</u>	<u>1991</u>	<u>1988</u>	<u>1989</u>	<u>1990</u>	<u>1991</u>	<u>1988</u>	<u>1989</u>	<u>1990</u>	<u>1991</u>
JANUARY	7.0	9.7	10.0	7.3	12.7	18.0	15.1	12.2	55.2	53.9	66.3	59.3
FEBRUARY	8.4	10.4	10.6	6.8	11.3	14.4	13.1	10.4	74.9	72.4	81.1	65.9
MARCH	10.6	13.6	12.9	7.4	13.1	17.8	14.8	9.2	81.2	76.3	87.1	81.3
APRIL	10.4	11.9	11.6	6.7	14.2	17.6	14.2	7.9	73.7	67.7	82.2	84.1
MAY	13.1	14.9	12.2	7.5	17.2	19.3	13.8	8.3	76.3	77.2	88.1	90.7
JUNE	11.9	14.7	12.1	7.9	16.2	19.8	13.7	9.5	73.6	74.3	88.3	83.5
JULY	15.5	20.3	13.9	10.8	19.5	24.8	14.6	12.3	79.7	81.8	95.5	88.1
AUGUST	14.6	18.5	12.5	9.7	18.1	24.4	14.3	11.9	80.7	75.8	87.2	81.3
SEPTEMBER	14.0	16.5	12.3	9.0	18.0	22.2	13.9	11.5	77.9	74.3	88.5	78.1
OCTOBER	14.1	16.3	11.5	8.6	18.4	22.5	14.5	11.7	76.7	72.1	79.2	74.0
NOVEMBER	8.9	9.9	8.4	6.7	14.7	15.5	11.6	11.1	60.2	63.7	72.2	60.4
DECEMBER	10.9	10.9	8.8	6.5	16.3	15.3	12.1	10.2	67.3	71.5	72.3	63.4
TOTAL	139.4	167.6	136.8	94.9	189.7	231.6	165.6	126.0	73.5	72.4	82.5	75.3

Note: * All load factors are calculated on the basis of actual figures. The total yearly figure has been rounded off from the actual figure and need not necessarily equal the sum of the rounded off monthly figures.

Table 2(d): Arrivals by Air from U.K. (Scheduled Flights) 1992 -1995

<u>MONTH</u>	<u>(000's)</u>				<u>(000's)</u>				<u>%*</u>			
	<u>SEATS USED</u>				<u>SEATS OFFERED</u>				<u>LOAD FACTOR</u>			
	<u>1992</u>	<u>1993</u>	<u>1994</u>	<u>1995</u>	<u>1992</u>	<u>1993</u>	<u>1994</u>	<u>1995</u>	<u>1992</u>	<u>1993</u>	<u>1994</u>	<u>1995</u>
JANUARY	6.2	5.7	5.1	4.1	10.0	7.4	7.1	7.8	61.2	77.9	71.3	53.0
FEBRUARY	6.2	5.5	5.0	5.6	8.7	6.1	5.9	6.6	71.0	90.7	83.5	84.2
MARCH	7.7	7.1	6.9	7.3	9.2	7.5	7.4	7.8	83.0	95.9	93.8	93.8
APRIL	9.1	8.2	6.7	7.7	12.8	10.2	9.4	10.1	71.1	79.9	71.0	76.0
MAY	9.3	8.6	8.3	8.1	12.5	11.1	9.9	10.3	74.1	76.7	83.2	78.1
JUNE	9.6	8.6	8.3	7.6	12.0	11.1	10.6	9.8	79.8	77.7	79.0	77.0
JULY	11.5	10.1	9.6	8.8	12.5	10.9	10.8	10.3	92.2	92.3	89.0	85.8
AUGUST	9.8	8.8	8.4	7.8	12.6	11.0	11.2	10.1	77.4	79.9	75.4	77.7
SEPTEMBER	6.9	8.7	8.3	7.2	8.3	10.7	10.2	9.3	82.9	81.5	80.8	77.7
OCTOBER	9.0	7.9	7.5	7.3	11.9	11.2	9.8	10.0	75.6	70.5	76.3	73.7
NOVEMBER	6.6	6.1	5.3	5.8	8.8	7.3	6.9	8.4	74.7	84.0	76.3	69.5
DECEMBER	6.0	5.8	5.9	6.5	7.5	6.9	7.2	8.9	79.5	84.8	82.4	73.8
TOTAL	97.7	91.2	85.2	83.8	127.0	111.4	106.4	109.4	76.9	81.9	80.0	76.7

Note: * All load factors are calculated on the basis of actual figures. The total yearly figure has been rounded off from the actual figure and need not necessarily equal the sum of the rounded off monthly figures.

Table 2(e): Arrivals by Air from U.K. (Scheduled Flights) 1996 -1999

<u>MONTH</u>	<u>(000's)</u>				<u>(000's)</u>				<u>% *</u>			
	<u>SEATS USED</u>				<u>SEATS OFFERED</u>				<u>LOAD FACTOR</u>			
	<u>1996</u>	<u>1997</u>	<u>1998</u>	<u>1999</u>	<u>1996</u>	<u>1997</u>	<u>1998</u>	<u>1999</u>	<u>1996</u>	<u>1997</u>	<u>1998</u>	<u>1999</u>
JANUARY	4.6	4.6	4.8	5.2	7.7	7.9	9.4	8.4	53.9	57.8	51.1	62.5
FEBRUARY	5.5	5.2	6.0	6.3	7.7	6.3	9.0	7.4	68.9	83.0	66.4	84.5
MARCH	7.0	6.1	7.6	8.1	8.4	6.9	9.8	8.8	83.7	87.4	78.1	91.4
APRIL	6.3	5.4	7.8	7.8	8.5	6.6	10.0	9.8	74.3	82.3	77.9	80.4
MAY	7.7	8.6	9.0	10.0	9.0	9.9	11.4	12.5	86.4	86.4	79.0	80.3
JUNE	7.5	7.6	8.0	9.8	8.7	9.4	10.9	11.8	85.6	80.2	73.6	82.7
JULY	7.6	8.6	9.3	10.7	8.4	9.5	10.6	12.4	90.7	90.8	87.3	85.8
AUGUST	6.6	8.3	9.2	9.2	7.5	10.0	11.2	11.6	87.8	83.4	82.2	79.2
SEPTEMBER	7.2	8.1	8.4	8.9	8.4	10.7	10.7	11.8	86.4	75.6	78.0	75.6
OCTOBER	6.6	8.5	8.2	8.3	8.5	10.4	11.2	11.7	78.3	81.1	73.1	70.3
NOVEMBER	5.8	5.9	6.5	6.5	7.8	9.2	8.4	9.7	74.5	63.7	78.0	67.0
DECEMBER	5.7	6.4	6.3	7.1	8.1	9.8	7.9	10.6	70.7	65.8	79.7	66.9
TOTAL	78.1	83.2	91.0	97.8	98.7	106.6	120.4	126.5	79.1	78.0	75.6	77.3

Note: * All load factors are calculated on the basis of actual figures. The total yearly figure has been rounded off from the actual figure and need not necessarily equal the sum of the rounded off monthly figures.

Table 2(f): Arrivals by Air from U.K. (Scheduled Flights) 2000 -2003

<u>MONTH</u>	<u>(000's)</u>				<u>(000's)</u>				<u>0% *</u>			
	<u>2000</u>	<u>2001</u>	<u>2002</u>	<u>2003</u>	<u>2000</u>	<u>2001</u>	<u>2002</u>	<u>2003</u>	<u>2000</u>	<u>2001</u>	<u>2002</u>	<u>2003</u>
	<u>SEATS USED</u>				<u>SEATS OFFERED</u>				<u>LOAD FACTOR</u>			
JANUARY	4.6	5.4	5.5	6.5	11.1	9.4	9.3	11.4	41.5	57.3	59.6	57.4
FEBRUARY	6.2	6.9	7.6	7.9	9.8	8.3	8.9	9.3	63.6	82.7	85.9	84.8
MARCH	8.7	8.6	10.2	10.3	10.7	9.8	11.7	13.2	81.3	87.9	87.4	78.2
APRIL	9.1	9.0	8.0	11.0	10.4	10.6	10.7	13.2	87.2	84.5	75.2	82.9
MAY	10.1	11.1	10.4	13.0	13.4	13.2	14.1	16.1	75.9	83.6	73.8	80.9
JUNE	9.7	11.0	10.4	12.2	12.4	12.8	13.3	15.6	78.3	85.7	78.3	78.6
JULY	10.8	11.7	13.2	14.6	13.4	13.5	14.6	16.1	80.8	86.6	90.4	90.6
AUGUST	10.1	10.5	12.2	13.2	12.9	13.4	14.3	16.1	78.1	78.3	85.5	81.8
SEPTEMBER	10.5	10.2	11.4	12.0	12.7	12.8	13.6	15.5	82.5	79.5	83.6	77.2
OCTOBER	10.0	9.5	11.0	12.3	13.4	13.4	14.4	15.9	74.6	70.9	76.4	77.5
NOVEMBER	7.0	7.5	8.0	10.2	9.1	10.6	10.7	14.1	76.2	71.1	74.7	71.9
DECEMBER	7.0	7.5	7.6	9.8	9.3	9.7	10.7	13.8	75.0	76.5	71.4	71.3
TOTAL	103.7	108.8	115.7	133.0	138.6	137.7	146.3	170.3	74.9	79.0	79.1	78.1

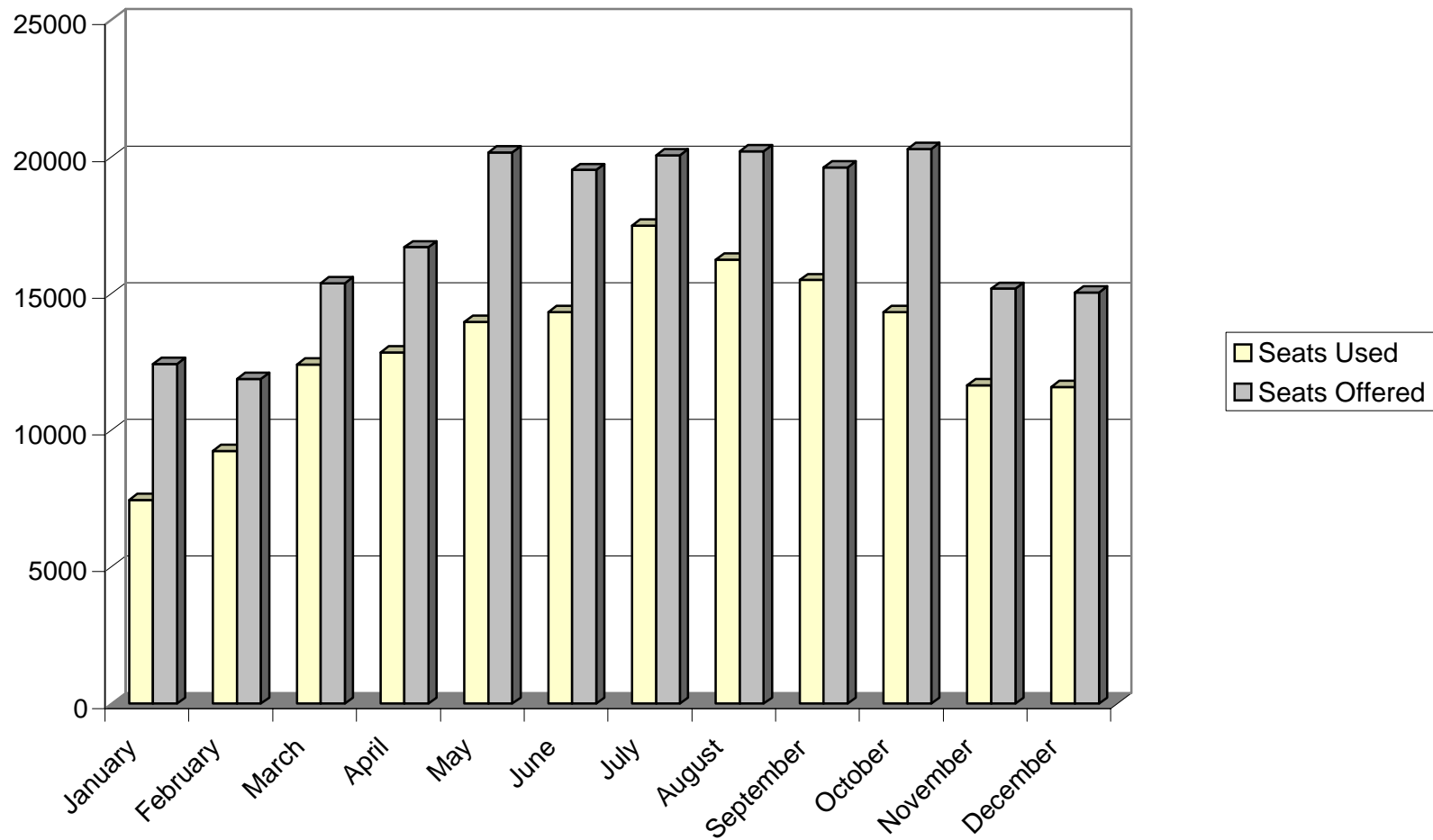
Note: * All load factors are calculated on the basis of actual figures. The total yearly figure has been rounded off from the actual figure and need not necessarily equal the sum of the rounded off monthly figures.

Table 2 (g): Arrivals by Air from U. K. (Scheduled Flights), 2004

<u>MONTH</u>	<u>(000's)</u>		<u>%</u>
	<u>SEATS USED</u>	<u>SEATS OFFERED</u>	<u>LOAD FACTOR</u>
January	7.5	12.4	60.0
February	9.2	11.9	77.8
March	12.4	15.4	80.7
April	12.9	16.7	77.0
May	14.0	20.2	69.3
June	14.3	19.5	73.4
July	17.5	20.1	87.2
August	16.2	20.2	80.4
September	15.5	19.6	79.0
October	14.3	20.3	70.6
November	11.7	15.2	76.8
December	11.6	15.0	77.0
TOTAL	157.0	206.4	76.1

Note: Load factors are calculated on the basis of actual figures and exclude visitors in transit when applicable. The total yearly figures have been rounded off from the actual figures and need not necessarily equal the sum of the rounded off monthly figures.

AIR ARRIVALS FROM UK (SCHEDULED FLIGHTS) - 2004



ARRIVALS BY AIR FROM UK (SCHEDULED FLIGHTS) 2004

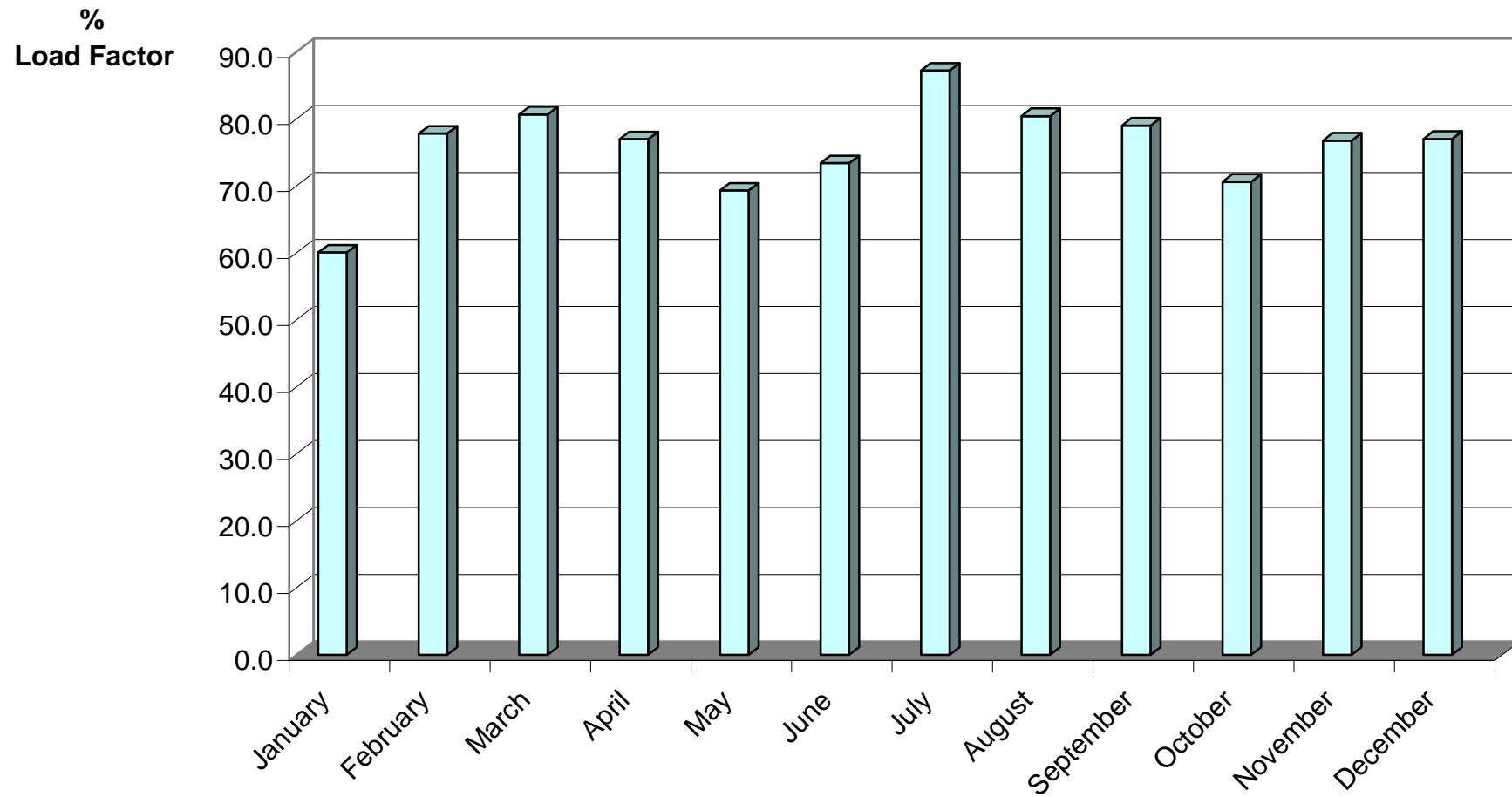


Table 3(a): Departures by Air to U.K. (Scheduled Flights) 1980 -1982

<u>MONTH</u>	<u>(000's)</u>			<u>(000's)</u>			<u>%</u>		
	<u>SEATS USED</u>			<u>SEATS OFFERED</u>			<u>LOAD FACTOR</u>		
	<u>1980</u>	<u>1981</u>	<u>1982</u>	<u>1980</u>	<u>1981</u>	<u>1982</u>	<u>1980</u> * (**)	<u>1981</u> * (**)	<u>1982</u> * (**)
JANUARY	1.7	1.6	1.9	2.8	2.1	2.2	59.3 (56.6)	75.9 (73.2)	85.2 (82.5)
FEBRUARY	1.5	1.5	1.6	2.7	1.9	2.3	56.6 (52.3)	79.3 (74.7)	70.9 (67.4)
MARCH	2.1	1.6	1.9	2.8	2.1	2.1	75.7 (67.7)	76.5 (70.9)	91.3 (86.2)
APRIL	2.0	2.2	2.6	2.4	2.7	3.2	84.7 (81.9)	83.0 (80.7)	82.1 (80.3)
MAY	1.7	1.8	2.1	2.5	2.7	3.2	69.0 (64.0)	64.4 (61.6)	67.0 (65.3)
JUNE	2.0	1.8	2.3	2.3	2.6	3.4	84.4 (80.4)	72.0 (69.3)	69.3 (67.4)
JULY	2.1	2.0	2.5	2.7	2.8	3.5	77.1 (74.5)	69.0 (65.9)	70.4 (69.3)
AUGUST	2.6	2.4	3.0	2.7	2.6	3.3	96.9 (95.4)	92.4 (89.9)	90.6 (88.6)
SEPTEMBER	2.2	2.4	2.8	2.5	2.7	3.4	84.8 (82.1)	89.2 (84.8)	83.1 (81.5)
OCTOBER	2.4	2.4	2.5	2.8	2.7	3.4	87.5 (82.8)	87.7 (84.0)	72.2 (68.2)
NOVEMBER	1.3	1.9	1.9	1.9	2.1	2.8	70.6 (65.2)	89.6 (84.3)	67.7 (64.2)
DECEMBER	1.5	1.8	1.6	1.9	2.1	2.8	78.1 (75.4)	86.1 (83.2)	55.2 (53.5)
TOTAL	23.1	23.4	26.7	30.0	29.1	35.6	77.0 (73.2)	80.2 (76.7)	75.1 (72.6)

Note: * All load factors are calculated on the basis of actual figures. The total yearly figure has been rounded off from the actual figure and need not necessarily equal the sum of the rounded off monthly figures.

** Revenue load factors exclude non-paying passengers and are also calculated on actual figures.

Table 3(b): Departures by Air to U.K. (Scheduled Flights) 1983 -1985

<u>MONTH</u>	<u>(000's)</u>			<u>(000's)</u>			<u>%</u>		
	<u>SEATS USED</u>			<u>SEATS OFFERED</u>			<u>LOAD FACTOR</u>		
	<u>1983</u>	<u>1984</u>	<u>1985</u>	<u>1983</u>	<u>1984</u>	<u>1985</u>	<u>1983</u> * (**)	<u>1984</u> * (**)	<u>1985</u> * (**)
JANUARY	1.7	2.1	2.3	2.9	2.6	2.6	61.2 (58.8)	80.5 (77.6)	89.3 (87.0)
FEBRUARY	1.5	1.5	1.9	2.6	2.1	2.2	56.6 (53.7)	72.6 (69.7)	85.9 (82.8)
MARCH	2.0	2.0	2.8	3.0	2.4	3.2	67.2 (61.7)	85.2 (81.3)	89.9 (86.4)
APRIL	2.6	2.5	4.0	3.9	3.1	4.6	65.8 (63.4)	80.3 (77.6)	89.0 (87.3)
MAY	2.0	2.0	3.6	4.0	3.2	4.4	48.6 (47.0)	64.0 (61.7)	81.7 (79.9)
JUNE	2.6	2.4	4.3	3.9	3.2	5.0	65.5 (64.2)	74.3 (72.2)	85.5 (84.4)
JULY	2.4	2.3	4.3	4.0	3.3	5.6	60.8 (59.2)	69.6 (68.0)	76.3 (75.5)
AUGUST	3.3	3.1	6.2	4.0	3.3	6.5	81.4 (79.5)	94.1 (92.2)	94.3 (93.4)
SEPTEMBER	3.1	3.0	5.6	3.9	3.3	5.9	78.3 (75.3)	92.5 (89.5)	94.1 (92.4)
OCTOBER	2.5	2.6	5.2	3.6	3.2	5.9	69.9 (66.6)	80.5 (76.2)	89.2 (86.8)
NOVEMBER	1.6	2.1	5.4	2.2	2.4	6.3	74.2 (71.1)	87.9 (83.0)	85.6 (82.7)
DECEMBER	1.5	2.0	4.4	2.4	2.5	7.5	63.3 (61.4)	78.9 (77.4)	58.9 (58.0)
TOTAL	26.8	27.6	50.0	40.4	34.6	59.7	66.2 (63.7)	80.0 (77.2)	83.9 (82.1)

Note: * All load factors are calculated on the basis of actual figures. The total yearly figure has been rounded off from the actual figure and need not necessarily equal the sum of the rounded off monthly figures.

** Revenue load factors exclude non-paying passengers and are also calculated on actual figures.

Table 3(c): Departures by Air to U.K. (Scheduled Flights) 1986 -1988

<u>MONTH</u>	<u>(000's)</u>			<u>(000's)</u>			<u>%</u>		
	<u>SEATS USED</u>			<u>SEATS OFFERED</u>			<u>LOAD FACTOR</u>		
	<u>1986</u>	<u>1987</u>	<u>1988</u>	<u>1986</u>	<u>1987</u>	<u>1988</u>	<u>1986</u> * (**)	<u>1987</u> * (**)	<u>1988</u> * (**)
JANUARY	5.2	6.4	9.0	6.9	7.9	12.7	75.8 (74.2)	80.6 (79.4)	70.6 (69.7)
FEBRUARY	4.1	4.7	8.2	5.9	6.6	11.2	70.0 (66.1)	70.8 (68.0)	73.1 (72.0)
MARCH	6.0	7.0	9.4	7.1	8.6	12.9	84.1 (82.8)	81.8 (78.1)	73.0 (71.5)
APRIL	6.8	7.5	12.2	7.3	8.3	14.4	92.0 (90.5)	90.2 (89.1)	85.0 (83.6)
MAY	6.3	8.7	11.6	8.6	11.2	16.8	73.9 (72.4)	77.8 (76.1)	68.9 (67.8)
JUNE	7.5	8.7	14.1	8.6	11.9	16.6	87.1 (85.9)	72.9 (71.4)	85.1 (83.8)
JULY	6.9	8.7	13.3	9.0	12.1	17.5	76.6 (75.4)	71.9 (70.6)	76.0 (75.3)
AUGUST	9.2	11.6	15.9	9.8	12.5	18.1	93.4 (92.7)	92.5 (91.7)	87.9 (87.3)
SEPTEMBER	8.6	10.6	15.4	9.0	11.7	17.8	95.7 (94.1)	90.3 (89.2)	86.2 (85.2)
OCTOBER	8.5	10.5	15.5	9.1	12.5	18.2	93.0 (91.1)	84.1 (82.5)	85.5 (84.4)
NOVEMBER	6.2	9.4	11.0	7.4	12.9	14.9	83.8 (81.2)	72.3 (71.1)	74.3 (72.4)
DECEMBER	4.9	6.9	8.7	8.2	13.0	16.1	59.7 (58.5)	55.6 (53.6)	53.8 (53.1)
TOTAL	80.1	100.7	144.3	96.9	129.2	187.2	82.7 (81.1)	77.8 (77.7)	77.1 (76.1)

Note: * All load factors are calculated on the basis of actual figures. The total yearly figure has been rounded off from the actual figure and need not necessarily equal the sum of the rounded off monthly figures.

** Revenue load factors exclude non-paying passengers and are also calculated on actual figures.

Table 3(d): Departures by Air to U.K. (Scheduled Flights) 1989 -1991

<u>MONTH</u>	<u>(000's)</u>			<u>(000's)</u>			<u>%</u>		
	<u>SEATS USED</u>			<u>SEATS OFFERED</u>			<u>LOAD FACTOR</u>		
	<u>1989</u>	<u>1990</u>	<u>1991</u>	<u>1989</u>	<u>1990</u>	<u>1991</u>	<u>1989</u>	<u>1990</u>	<u>1991</u>
							* (**)	* (**)	* (**)
JANUARY	12.2	11.4	7.5	18.0	15.4	12.1	67.7 (66.4)	74.3 (73.0)	62.1 (60.6)
FEBRUARY	10.2	10.5	6.7	14.4	13.3	10.3	70.9 (69.3)	79.1 (77.2)	65.4 (63.2)
MARCH	11.9	12.3	6.2	17.8	14.4	8.7	67.1 (65.0)	85.0 (83.2)	71.3 (69.1)
APRIL	13.6	13.0	7.8	17.5	14.6	8.6	77.3 (76.3)	89.2 (87.9)	90.2 (87.6)
MAY	13.3	11.7	6.9	18.7	14.2	8.2	70.7 (69.4)	82.2 (80.6)	83.6 (81.0)
JUNE	15.9	13.2	7.9	19.5	14.1	9.8	81.6 (80.5)	93.3 (92.0)	80.5 (77.9)
JULY	17.1	12.5	9.2	24.5	14.6	12.4	70.0 (69.0)	86.0 (84.7)	73.8 (71.2)
AUGUST	20.9	13.7	11.0	24.5	15.2	12.3	85.1 (84.4)	90.5 (89.8)	89.5 (87.0)
SEPTEMBER	18.4	13.4	9.9	22.0	14.3	12.2	83.5 (82.5)	93.2 (91.7)	81.7 (78.7)
OCTOBER	18.3	13.8	10.1	22.5	14.7	12.1	81.5 (80.1)	93.5 (92.2)	83.3 (81.5)
NOVEMBER	11.9	9.6	7.3	15.5	12.0	10.9	77.2 (75.3)	80.5 (77.5)	67.0 (65.4)
DECEMBER	10.2	8.7	6.1	15.0	12.1	10.2	68.2 (67.1)	71.8 (70.2)	59.7 (58.5)
TOTAL	174.0	143.8	96.6	230.0	168.9	127.8	75.7 (70.5)	85.1 (83.6)	75.6 (73.3)

Note: * All load factors are calculated on the basis of actual figures. The total yearly figure has been rounded off from the actual figure and need not necessarily equal the sum of the rounded off monthly figures.

** Revenue load factors exclude non-paying passengers and are also calculated on actual figures.

Table 3(e): Departures by Air to U.K. (Scheduled Flights) 1992 -1994

<u>MONTH</u>	<u>(000's)</u>			<u>(000's)</u>			<u>%</u>		
	<u>SEATS USED</u>			<u>SEATS OFFERED</u>			<u>LOAD FACTOR</u>		
	<u>1992</u>	<u>1993</u>	<u>1994</u>	<u>1992</u>	<u>1993</u>	<u>1994</u>	<u>1992</u>	<u>1993</u>	<u>1994</u>
							* (**)	* (**)	* (**)
JANUARY	6.7	6.1	5.8	10.2	7.6	7.1	65.9 (64.8)	80.5 (79.3)	81.9 (80.8)
FEBRUARY	6.2	5.4	5.0	8.6	6.4	6.2	72.5 (70.2)	83.8 (82.9)	81.7 (80.1)
MARCH	7.0	6.7	5.5	9.2	7.8	7.5	76.0 (73.8)	86.1 (84.7)	74.1 (72.9)
APRIL	9.5	8.3	7.6	12.8	10.0	9.3	74.3 (73.2)	82.3 (81.0)	81.9 (81.2)
MAY	8.6	7.9	7.6	12.6	11.1	10.1	68.1 (66.8)	71.3 (69.8)	76.3 (75.2)
JUNE	9.8	9.4	8.7	12.2	11.1	10.4	80.4 (79.1)	84.1 (82.9)	84.8 (83.7)
JULY	9.8	8.7	8.4	12.5	11.3	10.9	78.5 (76.7)	77.5 (76.7)	77.0 (77.5)
AUGUST	11.5	10.0	9.7	12.8	10.9	10.9	89.7 (88.8)	91.4 (90.5)	89.0 (88.3)
SEPTEMBER	7.6	9.7	9.3	8.2	10.5	10.2	91.9 (90.2)	92.2 (91.0)	91.8 (91.2)
OCTOBER	10.5	9.5	8.9	11.9	11.1	10.2	87.7 (85.9)	86.0 (85.0)	88.3 (87.5)
NOVEMBER	7.8	6.5	5.6	9.0	7.3	6.8	86.0 (84.2)	88.8 (87.3)	83.3 (82.4)
DECEMBER	5.6	5.1	4.8	7.6	6.9	7.2	73.8 (72.5)	73.2 (72.4)	67.3 (66.9)
TOTAL	100.5	93.3	86.9	127.7	112.2	107.1	78.7 (77.2)	83.2 (82.0)	81.2 (80.3)

Note: * All load factors are calculated on the basis of actual figures. The total yearly figure has been rounded off from the actual figure and need not necessarily equal the sum of the rounded off monthly figures.

** Revenue load factors exclude non-paying passengers and are also calculated on actual figures.

Table 3(f): Departures by Air to U.K. (Scheduled Flights) 1995 -1997

<u>MONTH</u>	<u>(000's)</u> <u>SEATS USED</u>			<u>(000's)</u> <u>SEATS OFFERED</u>			<u>%</u> <u>LOAD FACTOR</u>		
	<u>1995</u>	<u>1996</u>	<u>1997</u>	<u>1995</u>	<u>1996</u>	<u>1997</u>	<u>1995</u> * (**)	<u>1996</u> * (**)	<u>1997</u> * (**)
JANUARY	5.5	5.3	4.7	7.8	7.7	6.8	70.8 (70.3)	69.4 (69.0)	68.5 (67.4)
FEBRUARY	5.2	5.6	5.1	6.9	8.2	6.4	75.1 (74.4)	68.1 (67.6)	79.4 (78.3)
MARCH	6.6	6.3	5.2	7.7	8.1	6.8	85.1 (84.6)	77.1 (76.4)	76.4 (75.5)
APRIL	8.3	7.0	6.1	10.3	8.7	6.7	80.5 (80.3)	81.0 (80.7)	90.1 (89.7)
MAY	7.3	7.0	7.7	10.4	8.7	9.6	69.8 (69.4)	79.9 (79.5)	79.8 (79.2)
JUNE	8.2	8.1	7.9	9.9	9.1	9.5	82.5 (82.0)	89.5 (89.1)	83.2 (83.0)
JULY	7.9	6.8	7.5	10.3	8.6	9.7	76.5 (76.0)	79.1 (79.0)	77.0 (76.7)
AUGUST	8.5	6.8	8.7	10.3	7.6	9.5	82.8 (82.4)	89.7 (89.5)	91.7 (91.4)
SEPTEMBER	8.4	8.0	8.8	9.6	8.5	10.5	87.6 (87.0)	93.5 (93.2)	83.8 (83.5)
OCTOBER	8.3	7.3	8.6	9.9	8.3	9.6	83.0 (82.4)	88.6 (88.2)	90.0 (89.6)
NOVEMBER	6.3	5.9	6.5	8.5	7.6	9.2	73.8 (73.1)	77.7 (77.1)	70.3 (70.0)
DECEMBER	4.8	4.1	4.7	7.9	7.0	10.1	61.5 (60.8)	58.8 (58.4)	46.3 (46.1)
TOTAL	85.3	78.2	81.5	109.5	98.1	104.4	77.8 (77.3)	79.6 (79.0)	78.1 (77.6)

Note: * All load factors are calculated on the basis of actual figures. The total yearly figure has been rounded off from the actual figure and need not necessarily equal the sum of the rounded off monthly figures.

** Revenue load factors exclude non-paying passengers and are also calculated on actual figures.

Table 3(g): Departures by Air to U.K. (Scheduled Flights) 1998 -2000

<u>MONTH</u>	<u>(000's)</u> <u>SEATS USED</u>			<u>(000's)</u> <u>SEATS OFFERED</u>			<u>%</u> <u>LOAD FACTOR</u>		
	<u>1998</u>	<u>1999</u>	<u>2000</u>	<u>1998</u>	<u>1999</u>	<u>2000</u>	<u>1998</u> * (**)	<u>1999</u> * (**)	<u>2000</u> * (**)
JANUARY	6.0	6.3	6.5	9.5	8.5	11.1	63.1 (62.7)	74.1 (73.9)	58.8 (58.7)
FEBRUARY	5.3	5.7	6.0	8.7	7.5	9.8	60.7 (60.2)	75.1 (74.3)	61.5 (61.4)
MARCH	6.7	7.0	8.0	9.9	8.5	10.6	67.9 (67.9)	82.8 (82.7)	75.2 (74.9)
APRIL	8.2	8.7	9.1	10.0	9.8	10.1	81.9 (81.7)	89.0 (88.5)	89.4 (89.3)
MAY	8.0	8.9	9.9	11.2	12.5	13.3	71.3 (70.9)	71.0 (71.0)	74.5 (74.5)
JUNE	8.1	10.0	10.5	10.8	11.6	12.4	74.6 (74.2)	86.3 (86.3)	84.9 (84.8)
JULY	7.7	9.4	9.8	10.3	12.5	13.4	74.5 (74.3)	75.7 (75.7)	73.0 (72.9)
AUGUST	9.9	9.6	10.6	11.1	11.4	12.7	89.5 (89.4)	84.7 (84.7)	83.6 (83.5)
SEPTEMBER	9.2	10.2	11.7	10.4	11.8	12.8	88.5 (88.4)	86.3 (86.3)	91.4 (91.2)
OCTOBER	8.9	9.0	11.1	11.0	11.8	13.2	80.5 (80.3)	76.4 (76.4)	84.2 (84.1)
NOVEMBER	7.1	7.4	7.5	8.3	10.0	9.2	84.9 (84.4)	74.4 (74.4)	82.1 (82.0)
DECEMBER	5.0	5.1	5.7	7.6	10.6	9.3	66.2 (65.5)	48.0 (47.9)	61.3 (60.8)
TOTAL	90.1	97.4	106.6	119.0	126.5	138.1	75.7 (75.4)	77.0 (76.9)	77.2 (77.1)

Note: * All load factors are calculated on the basis of actual figures. The total yearly figure has been rounded off from the actual figure and need not necessarily equal the sum of the rounded off monthly figures.

** Revenue load factors exclude non-paying passengers and are also calculated on actual figures.

Table 3(h): Departures by Air to U.K. (Scheduled Flights) 2001 -2003

<u>MONTH</u>	<u>(000's)</u>			<u>(000's)</u>			<u>%</u>		
	<u>SEATS USED</u>			<u>SEATS OFFERED</u>			<u>LOAD FACTOR</u>		
	<u>2001</u>	<u>2002</u>	<u>2003</u>	<u>2001</u>	<u>2002</u>	<u>2003</u>	<u>2001</u>	<u>2002</u>	<u>2003</u>
							* (**)	* (**)	* (**)
JANUARY	6.6	6.4	7.5	9.4	9.5	11.4	70.2 (70.2)	67.7 (67.7)	66.2 (66.2)
FEBRUARY	6.6	7.0	7.3	8.4	8.9	9.3	78.9 (78.9)	78.4 (78.4)	77.8 (77.8)
MARCH	7.9	8.4	10.1	9.8	11.1	13.2	81.0 (81.0)	75.7 (75.7)	76.6 (76.6)
APRIL	9.4	9.3	10.5	10.6	10.7	12.9	87.9 (87.9)	86.5 (86.5)	81.1 (81.1)
MAY	10.2	9.4	12.0	13.3	14.1	16.1	76.7 (76.7)	66.5 (66.5)	74.7 (74.6)
JUNE	11.0	10.5	12.8	12.9	13.3	15.4	85.7 (85.7)	79.1 (79.1)	83.3 (83.3)
JULY	10.3	10.8	12.0	13.5	14.8	16.1	76.0 (76.0)	72.9 (72.9)	74.7 (74.6)
AUGUST	11.5	13.1	14.6	13.4	14.5	16.1	85.4 (85.4)	90.5 (90.5)	91.0 (91.0)
SEPTEMBER	11.1	12.6	13.7	12.8	13.6	15.5	86.6 (86.6)	92.7 (92.7)	88.1 (88.1)
OCTOBER	11.3	11.7	12.9	13.5	14.4	15.9	83.9 (83.9)	81.3 (81.3)	81.0 (80.9)
NOVEMBER	8.5	8.6	10.9	10.7	10.7	14.1	79.9 (79.9)	80.6 (80.6)	77.4 (77.4)
DECEMBER	6.0	6.2	8.5	9.5	10.5	13.8	63.2 (63.2)	58.8 (58.8)	61.6 (61.6)
TOTAL	110.5	114.0	132.9	137.9	146.1	169.8	80.1 (80.1)	78.0 (78.0)	78.2 (78.2)

Note: * All load factors are calculated on the basis of actual figures. The total yearly figure has been rounded off from the actual figure and need not necessarily equal the sum of the rounded off monthly figures.

** Revenue load factors exclude non-paying passengers and are also calculated on actual figures.

Table 3 (i): Departures by Air to U. K. (Scheduled Flights), 2004

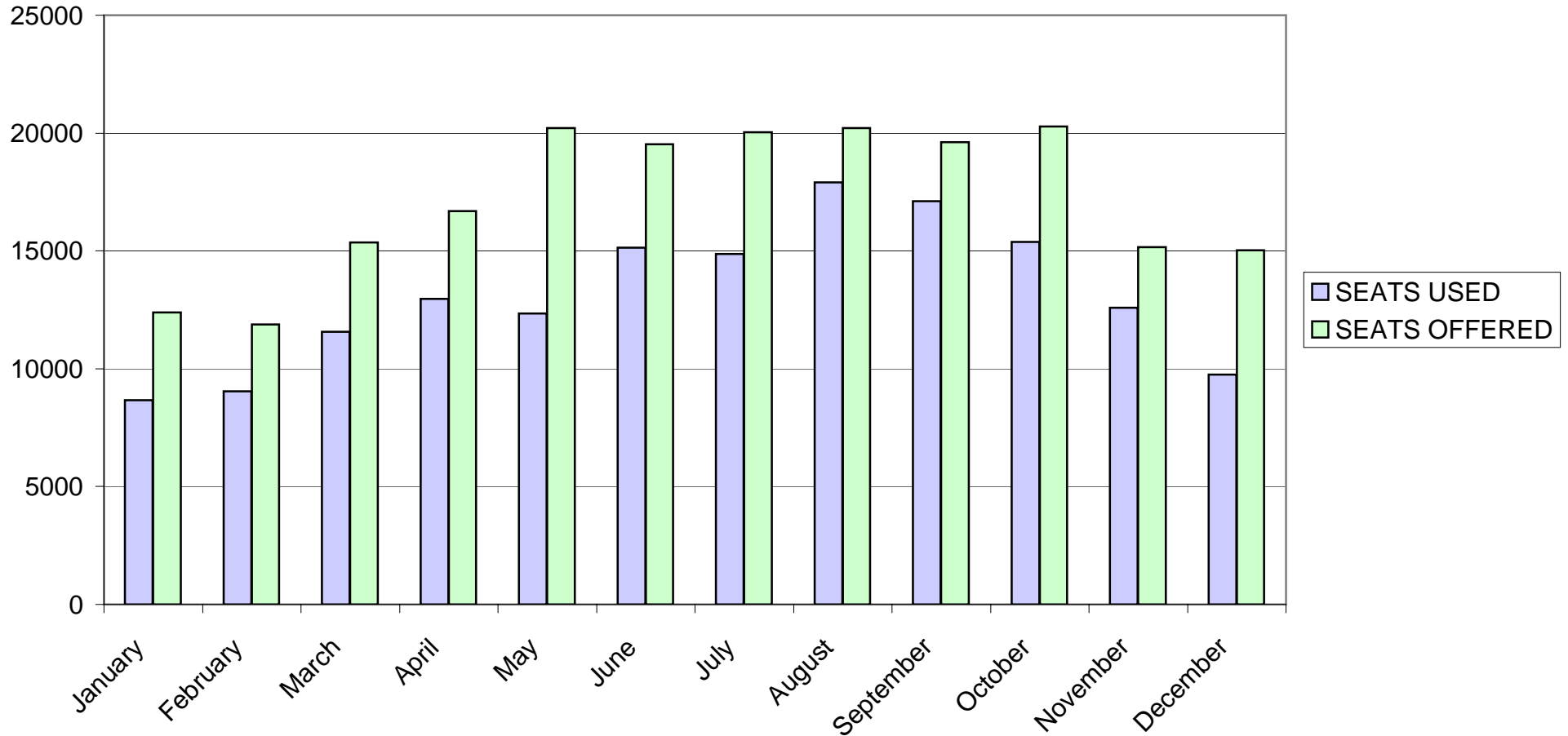
<u>MONTH</u>	<u>(000's)</u>		<u>%</u>	
	<u>SEATS USED</u>	<u>SEATS OFFERED</u>	<u>LOAD FACTOR</u> <u>(1)</u>	<u>(2)</u>
January	8.7	12.4	70.0	69.9
February	9.1	11.9	76.2	76.2
March	11.6	15.4	75.3	75.3
April	13.0	16.7	77.7	77.7
May	12.3	20.2	61.0	61.0
June	15.1	19.5	77.6	77.6
July	14.9	20.0	74.2	74.2
August	17.9	20.2	88.5	88.5
September	17.1	19.6	87.2	87.2
October	15.4	20.3	75.8	75.8
November	12.6	15.2	83.1	83.1
December	9.8	15.0	64.9	64.9
TOTAL	157.3	206.4	76.2	76.2

Notes:

(1) Load factors are calculated on the basis of actual figures and exclude visitors in transit when applicable. The total yearly figures have been rounded off from the actual figures and need not necessarily equal the sum of the rounded off monthly figures.

(2) Revenue load factors exclude non-paying passengers from the Seats Used figures and are also calculated on the basis of actual figures.

DEPARTURES BY AIR TO UK (SCHEDULED FLIGHTS) - 2004



DEPARTURES BY AIR TO UK (SCHEDULED FLIGHTS) 2004

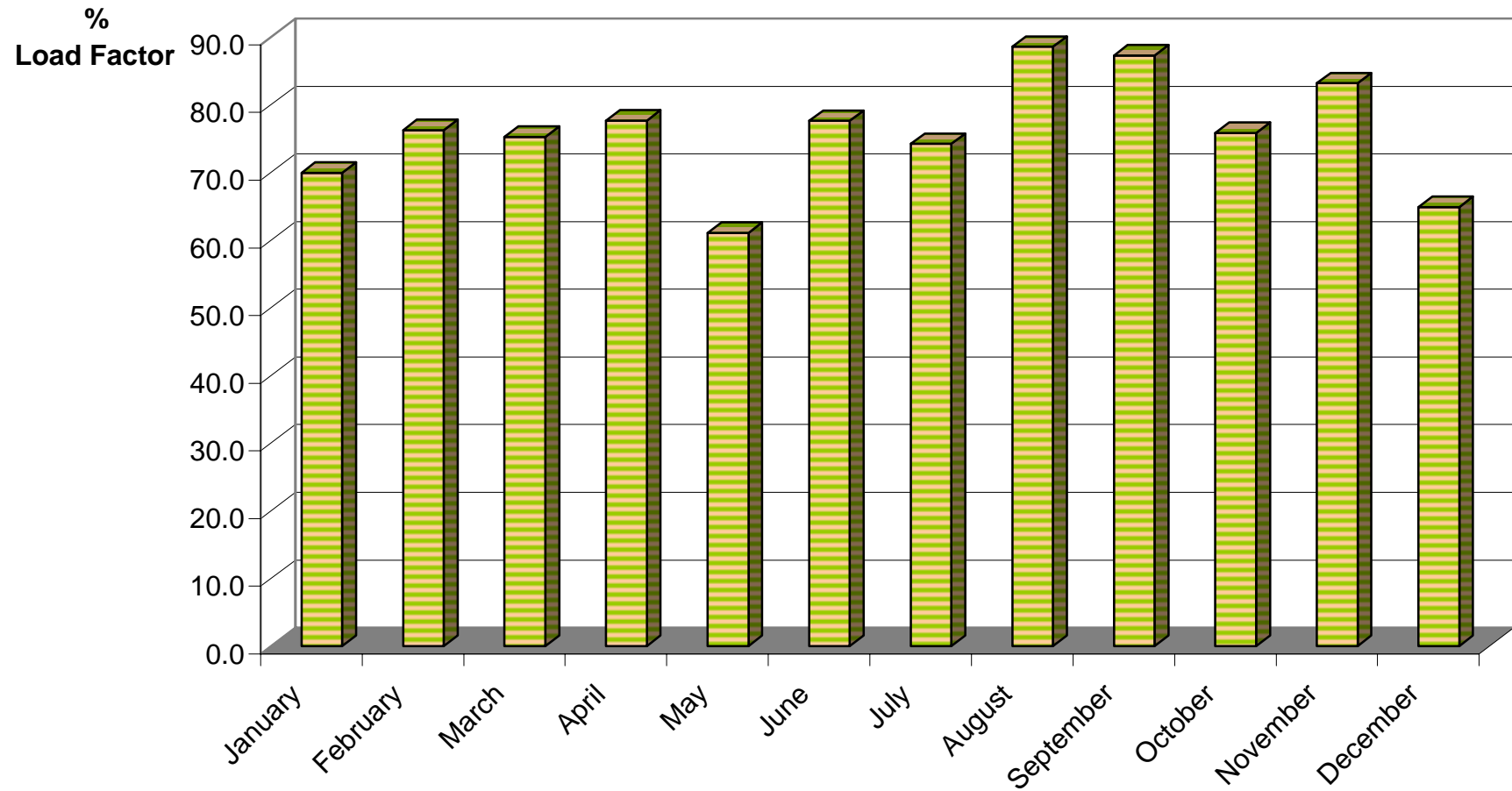


Table 4(a): Arrivals by Air from U.K. (Charter Flights) 1984 -1987

<u>MONTH</u>	<u>(000's)</u>				<u>(000's)</u>				<u>%</u>			
	<u>1984</u>	<u>1985</u>	<u>1986</u>	<u>1987</u>	<u>1984</u>	<u>1985</u>	<u>1986</u>	<u>1987</u>	<u>1984</u>	<u>1985</u>	<u>1986</u>	<u>1987</u>
JANUARY	1.2	0.7	-	2.3	1.7	0.9	-	2.5	71.7	82.5	-	92.2
FEBRUARY	1.1	1.0	0.1	1.5	1.2	1.0	0.1	1.6	97.7	99.9	90.8	97.1
MARCH	1.8	1.5	-	1.2	1.9	1.6	-	1.2	92.7	95.0	-	95.7
APRIL	1.7	1.7	-	1.6	1.9	1.8	-	1.6	89.7	92.9	-	97.6
MAY	2.2	2.0	0.8	0.1	2.7	2.3	1.0	0.2	80.7	88.1	83.8	61.9
JUNE	2.2	1.9	0.7	1.2	2.7	2.2	0.8	1.3	82.0	88.4	84.5	88.8
JULY	3.1	2.6	0.6	1.0	3.4	2.9	0.6	1.0	91.0	90.6	94.9	98.0
AUGUST	2.6	2.0	0.7	1.0	2.7	2.1	0.7	1.0	94.1	93.9	96.8	97.1
SEPTEMBER	2.5	2.4	0.6	1.3	3.0	2.5	0.6	1.3	85.4	93.1	95.4	98.4
OCTOBER	2.2	1.5	0.6	0.8	2.9	2.2	0.9	1.0	76.6	68.1	66.1	75.4
NOVEMBER	1.4	-	-	1.5	1.6	-	-	1.6	89.3	-	-	98.3
DECEMBER	0.9	-	-	1.6	1.0	-	-	1.7	87.5	-	-	96.0
TOTAL	22.9	17.3	4.1	15.1	26.7	19.5	4.8	16.0	86.0	88.9	84.1	94.4

Notes: * Figures exclude MoD charter flights.

** The total yearly figures have been rounded off from the actual figures and need not necessarily equal the sum of the rounded off monthly figures.

Table 4(b): Arrivals by Air from U.K. (Charter Flights) 1988 -1991

<u>MONTH</u>	<u>(000's)</u>				<u>(000's)</u>				<u>%</u>			
	<u>SEATS USED</u>				<u>SEATS OFFERED</u>				<u>LOAD FACTOR</u>			
	<u>1988</u>	<u>1989</u>	<u>1990</u>	<u>1991</u>	<u>1988</u>	<u>1989</u>	<u>1990</u>	<u>1991</u>	<u>1988</u>	<u>1989</u>	<u>1990</u>	<u>1991</u>
JANUARY	1.6	1.2	0.8	-	1.7	1.7	1.0	0.2	93.4	72.4	79.5	5.8
FEBRUARY	1.5	1.4	1.0	-	1.6	1.8	1.0	-	97.5	77.9	91.7	-
MARCH	1.8	0.4	1.3	0.1	1.8	0.4	1.3	0.1	96.7	84.7	96.9	90.2
APRIL	1.2	0.8	0.8	-	1.4	1.3	1.3	-	80.5	61.4	58.1	-
MAY	0.6	-	-	1.5	0.7	-	-	1.9	90.2	-	-	79.3
JUNE	0.2	-	-	1.8	0.3	-	-	2.5	85.7	-	-	74.2
JULY	0.5	-	0.3	2.1	0.5	-	0.4	2.4	96.7	-	90.8	89.0
AUGUST	0.6	-	0.2	2.7	0.7	-	0.3	3.1	95.4	-	65.1	87.6
SEPTEMBER	0.5	0.2	0.2	1.8	0.6	0.2	0.5	2.3	74.3	77.9	42.0	81.2
OCTOBER	0.6	-	-	1.0	0.7	0.1	-	1.8	95.2	-	-	57.0
NOVEMBER	1.1	0.8	0.2	-	1.2	1.2	0.5	0.1	96.9	66.0	52.6	6.1
DECEMBER	1.5	0.8	-	-	1.7	1.0	-	-	86.5	80.9	-	-
TOTAL	11.7	5.6	4.8	11.0	12.9	7.8	6.3	14.4	90.7	71.7	75.9	75.2

Notes: *Figures exclude MoD charter flights.

**The total yearly figures have been rounded off from the actual figures and need not necessarily equal the sum of the rounded off monthly figures.

Table 4(c): Arrivals by Air from U.K. (Charter Flights) 1992,1998 - 2000

<u>MONTH</u>	<u>(000's)</u> <u>SEATS USED</u>				<u>(000's)</u> <u>SEATS OFFERED</u>				<u>%</u> <u>LOAD FACTOR</u>			
	<u>1992</u>	<u>1998</u>	<u>1999</u>	<u>2000</u>	<u>1992</u>	<u>1998</u>	<u>1999</u>	<u>2000</u>	<u>1992</u>	<u>1998</u>	<u>1999</u>	<u>2000</u>
JANUARY	0.1	-	-	0.1	0.1	-	0.1	0.1	96.9	-	5.6	82.6
FEBRUARY	-	-	-	-	-	-	-	-	-	-	-	-
MARCH	-	-	0.2	-	-	-	0.2	-	-	-	82.5	-
APRIL	-	-	0.1	0.2	-	-	0.1	0.3	-	-	56.9	65.8
MAY	-	-	-	-	-	-	-	-	-	-	-	-
JUNE	-	-	-	-	-	-	-	-	-	-	-	-
JULY	0.1	-	-	-	0.1	-	-	-	93.3	-	-	-
AUGUST	-	-	-	-	-	-	-	0.1	-	-	-	94.0
SEPTEMBER	-	-	-	0.1	-	-	0.2	0.1	-	-	15.6	56.9
OCTOBER	-	-	0.1	-	-	0.1	0.2	-	-	58.0	46.1	-
NOVEMBER	-	0.7	-	0.1	-	0.7	-	0.2	-	99.3	-	34.4
DECEMBER	0.1	0.3	0.1	-	0.1	0.4	0.2	-	100.0	79.4	73.3	67.5
TOTAL	0.3	1.1	0.5	0.5	0.3	1.2	1.0	0.8	96.9	90.1	48.9	62.4

Notes: * Figures exclude MoD charter flights. No charter operations were recorded during 1993 - 1997.

**The total yearly figures have been rounded off from the actual figures and need not necessarily equal the sum of the rounded off monthly figures.

Table 4(d): Arrivals by Air from U.K. (Charter Flights) 2001 - 2003

<u>MONTH</u>	<u>(000's)</u> <u>SEATS USED</u>			<u>(000's)</u> <u>SEATS OFFERED</u>			<u>%</u> <u>LOAD FACTOR</u>		
	<u>2001</u>	<u>2002</u>	<u>2003</u>	<u>2001</u>	<u>2002</u>	<u>2003</u>	<u>2001</u>	<u>2002</u>	<u>2003</u>
JANUARY	-	-	0.2	-	-	0.3	100.0	100.0	61.6
FEBRUARY	-	-	0.8	-	-	1.4	-	100.0	60.1
MARCH	-	0.1	0.2	-	0.1	0.5	100.0	100.0	41.2
APRIL	0.1	0.2	0.2	0.3	0.2	0.3	42.4	100.0	55.2
MAY	-	0.1	0.2	-	0.1	0.3	-	100.0	71.8
JUNE	-	0.1	-	-	0.1	-	-	100.0	-
JULY	-	0.1	-	-	0.1	-	-	100.0	-
AUGUST	-	-	-	-	-	-	-	100.0	-
SEPTEMBER	-	-	0.2	-	-	0.3	-	100.0	63.2
OCTOBER	-	0.1	0.2	-	0.1	0.2	55.1	100.0	87.6
NOVEMBER	-	-	-	-	-	-	-	100.0	-
DECEMBER	-	0.1	-	-	0.1	-	-	100.0	-
TOTAL	0.2	0.9	2.0	0.4	0.9	3.3	50.9	100.0	59.9

Notes: * Figures exclude MoD charter flights.

**The total yearly figures have been rounded off from the actual figures and need not necessarily equal the sum of the rounded off monthly figures.

Table 4 (e): Arrivals by Air (Charter Flights) 2004

<u>MONTH</u>	<u>(000's)</u> <u>SEATS USED</u>	<u>(000's)</u> <u>SEATS OFFERED</u>	<u>%</u> <u>LOAD FACTOR</u>
January	-	-	-
February	-	-	-
March	-	0.1	17.0
April	-	-	-
May	0.2	0.2	91.3
June	-	-	-
July	0.2	0.3	63.5
August	-	-	-
September	0.1	0.2	64.4
October	0.1	0.1	100.0
November	0.2	0.2	93.6
December	-	-	-
TOTAL	0.9	1.2	74.4

Note: Load factors are calculated on the basis of actual figures and exclude visitors in transit when applicable. The total yearly figures have been rounded off from the actual figures and need not necessarily equal the sum of the rounded off monthly figures.

Table 5(a): Departures by Air to U.K. (Charter Flights) 1984 -1987

<u>MONTH</u>	<u>(000's)</u>				<u>(000's)</u>				<u>%</u>			
	<u>1984</u>	<u>1985</u>	<u>1986</u>	<u>1987</u>	<u>1984</u>	<u>1985</u>	<u>1986</u>	<u>1987</u>	<u>1984</u>	<u>1985</u>	<u>1986</u>	<u>1987</u>
	<u>SEATS USED</u>				<u>SEATS OFFERED</u>				<u>LOAD FACTOR</u>			
JANUARY	1.5	0.7	-	2.2	1.7	0.9	-	2.5	89.0	85.0	-	89.0
FEBRUARY	1.0	0.9	0.1	1.5	1.2	1.0	0.1	1.6	86.3	89.7	90.8	95.0
MARCH	1.8	1.5	-	1.0	1.9	1.6	-	1.2	93.0	96.0	-	83.1
APRIL	1.8	1.7	-	0.8	1.9	1.8	-	1.6	94.5	96.0	-	51.7
MAY	1.7	1.7	0.6	-	2.7	2.3	1.0	0.2	63.7	72.6	61.8	32.3
JUNE	2.2	1.9	0.7	1.2	2.7	2.2	0.8	1.3	83.0	89.8	85.6	95.1
JULY	3.0	2.5	0.5	0.9	3.4	2.8	0.6	1.0	86.5	87.9	87.7	86.0
AUGUST	2.7	2.0	0.7	1.0	2.7	2.1	0.7	1.0	98.3	98.0	97.8	93.9
SEPTEMBER	2.7	2.5	0.6	1.3	3.0	2.5	0.6	1.3	90.7	97.5	97.8	98.6
OCTOBER	2.7	2.2	0.6	1.0	2.9	2.2	0.9	1.0	95.5	98.1	74.0	95.5
NOVEMBER	1.5	-	-	1.6	1.6	-	-	1.3	93.3	-	-	81.5
DECEMBER	0.8	-	-	1.6	1.0	-	-	1.7	80.1	-	-	95.5
TOTAL	23.4	17.6	4.0	14.1	26.7	19.4	4.9	15.8	87.8	91.2	81.5	89.8

Notes: * Figures exclude MoD charter flights.

**The total yearly figures have been rounded off from the actual figures and need not necessarily equal the sum of the rounded off monthly figures.

Table 5(b): Departures by Air to U.K. (Charter Flights) 1988 -1991

<u>MONTH</u>	<u>(000's)</u>				<u>(000's)</u>				<u>%</u>			
	<u>SEATS USED</u>				<u>SEATS OFFERED</u>				<u>LOAD FACTOR</u>			
	<u>1988</u>	<u>1989</u>	<u>1990</u>	<u>1991</u>	<u>1988</u>	<u>1989</u>	<u>1990</u>	<u>1991</u>	<u>1988</u>	<u>1989</u>	<u>1990</u>	<u>1991</u>
JANUARY	1.6	1.3	0.8	0.1	1.7	1.7	1.0	0.2	94.2	78.3	77.3	64.6
FEBRUARY	1.5	1.4	0.9	-	1.6	1.8	1.0	-	94.4	76.2	83.6	-
MARCH	1.7	0.3	1.2	0.1	1.8	0.4	1.3	0.1	93.9	79.1	93.2	84.8
APRIL	1.4	1.2	1.0	-	1.4	1.3	1.3	-	96.0	92.0	77.9	-
MAY	0.6	-	-	0.9	0.7	-	-	1.9	91.2	-	-	47.6
JUNE	0.2	-	-	1.8	0.3	-	-	2.5	90.4	-	-	74.2
JULY	0.4	-	0.2	1.8	0.5	-	0.4	2.4	80.6	-	60.8	74.9
AUGUST	0.6	-	0.2	2.9	0.7	-	0.3	3.0	96.0	-	62.4	94.2
SEPTEMBER	0.6	0.2	0.2	2.0	0.6	0.3	0.5	2.3	91.8	77.1	45.1	87.6
OCTOBER	0.6	0.1	-	1.6	0.7	0.1	-	2.0	91.0	67.2	-	78.6
NOVEMBER	0.9	0.6	0.2	0.2	1.2	1.2	0.5	0.3	78.6	47.7	53.2	88.1
DECEMBER	1.3	0.7	-	-	1.7	1.0	-	-	79.5	71.7	-	-
TOTAL	11.4	5.8	4.6	9.6	12.9	7.8	6.3	12.3	88.4	74.5	75.9	78.2

Notes: * Figures exclude MoD charter flights.

**The total yearly figures have been rounded off from the actual figures and need not necessarily equal the sum of the rounded off monthly figures.

Table 5(c): Departures by Air to U.K. (Charter Flights) 1992,1998 - 2000

<u>MONTH</u>	<u>(000's)</u>				<u>(000's)</u>				<u>%</u>			
	<u>SEATS USED</u>				<u>SEATS OFFERED</u>				<u>LOAD FACTOR</u>			
	<u>1992</u>	<u>1998</u>	<u>1999</u>	<u>2000</u>	<u>1992</u>	<u>1998</u>	<u>1999</u>	<u>2000</u>	<u>1992</u>	<u>1998</u>	<u>1999</u>	<u>2000</u>
JANUARY	0.1	-	0.1	0.1	0.1	-	0.1	0.1	93.1	-	81.9	82.6
FEBRUARY	-	-	-	-	-	-	-	-	-	-	-	-
MARCH	-	-	0.1	-	-	-	0.2	-	-	-	54.1	-
APRIL	-	-	0.1	0.2	-	-	0.1	0.3	-	-	100.0	65.8
MAY	-	-	-	-	-	-	-	-	-	-	-	-
JUNE	-	-	-	-	-	-	-	-	-	-	-	-
JULY	0.1	-	-	-	0.1	-	-	-	93.3	-	-	-
AUGUST	-	-	-	-	-	-	-	0.1	-	-	-	94.0
SEPTEMBER	-	-	-	0.1	-	-	0.2	0.1	-	-	15.0	56.9
OCTOBER	-	-	0.1	-	-	0.1	0.2	-	-	46.0	54.4	-
NOVEMBER	-	0.6	-	0.1	-	0.7	-	0.2	-	88.1	-	34.4
DECEMBER	0.3	0.3	-	-	0.2	0.4	0.2	-	75.4	57.3	-	67.5
TOTAL	0.5	0.9	0.5	0.5	0.4	1.2	1.0	0.8	84.3	74.8	48.8	62.4

Notes: * No charter operations were recorded during 1993 - 1997. Figures exclude MoD charter flights.

**The total yearly figures have been rounded off from the actual figures and need not necessarily equal the sum of the rounded off monthly figures.

Table 5(d): Departures by Air to U.K. (Charter Flights) 2001 - 2003

<u>MONTH</u>	<u>(000's)</u> <u>SEATS USED</u>			<u>(000's)</u> <u>SEATS OFFERED</u>			<u>%</u> <u>LOAD FACTOR</u>		
	<u>2001</u>	<u>2002</u>	<u>2003</u>	<u>2001</u>	<u>2002</u>	<u>2003</u>	<u>2001</u>	<u>2002</u>	<u>2003</u>
JANUARY	-	-	0.1	-	-	0.3	-	-	43.8
FEBRUARY	-	-	0.9	-	-	1.4	-	-	64.5
MARCH	-	0.1	0.2	-	0.1	0.5	-	100.0	42.0
APRIL	0.1	0.2	0.2	0.3	0.2	0.3	42.4	100.0	62.8
MAY	-	0.1	0.2	-	0.1	0.3	-	100.0	63.1
JUNE	-	0.1	-	-	0.1	-	-	100.0	-
JULY	-	0.1	-	-	0.1	-	-	100.0	-
AUGUST	-	-	-	-	-	-	-	-	-
SEPTEMBER	-	-	0.1	-	-	0.3	-	-	41.9
OCTOBER	-	0.1	0.2	-	0.1	0.2	-	100.0	85.4
NOVEMBER	-	-	-	-	-	-	-	-	-
DECEMBER	-	0.1	-	-	0.1	-	-	53.8	-
TOTAL	0.2	0.9	1.9	0.4	0.9	3.3	42.4	94.6	58.2

Notes: * Figures exclude MoD charter flights.

**The total yearly figures have been rounded off from the actual figures and need not necessarily equal the sum of the rounded off monthly figures.

Table 5 (e): Departures by Air (Charter Flights) 2004

<u>MONTH</u>	<u>(000's)</u> <u>SEATS USED</u>	<u>(000's)</u> <u>SEATS OFFERED</u>	<u>%</u> <u>LOAD FACTOR</u>
January	-	-	-
February	-	-	-
March	-	0.1	25.0
April	-	-	-
May	0.2	0.2	90.4
June	-	-	-
July	0.2	0.3	59.0
August	-	-	-
September	0.2	0.2	86.8
October	0.1	0.1	100.0
November	0.2	0.2	94.1
December	-	-	-
TOTAL	0.9	1.2	78.1

Note: Load factors are calculated on the basis of actual figures and exclude visitors in transit when applicable. The total yearly figures have been rounded off from the actual figures and need not necessarily equal the sum of the rounded off monthly figures.

Table 6(a): Arrivals by Air from Morocco (Scheduled Flights), 1993-1996

<u>MONTH</u>	<u>(000's)</u> <u>SEATS USED</u>				<u>(000's)</u> <u>SEATS OFFERED</u>				<u>%</u> <u>LOAD FACTOR</u>			
	<u>1993</u>	<u>1994</u>	<u>1995</u>	<u>1996</u>	<u>1993</u>	<u>1994</u>	<u>1995</u>	<u>1996</u>	<u>1993</u>	<u>1994</u>	<u>1995</u>	<u>1996</u>
JANUARY	0.6	0.6	0.4	1.6	2.5	2.6	3.2	4.1	23.7	23.1	12.9	40.0
FEBRUARY	0.5	0.5	0.3	0.6	2.2	2.6	2.8	3.1	22.2	19.2	9.9	19.2
MARCH	0.6	0.5	0.4	1.0	2.6	2.7	2.9	3.0	21.4	17.5	14.0	33.3
APRIL	0.4	0.5	0.5	0.6	2.7	2.2	3.2	3.0	15.8	22.8	16.7	21.5
MAY	0.4	0.4	0.5	0.4	2.9	2.5	3.5	2.7	15.6	14.9	13.0	15.6
JUNE	0.3	0.3	0.4	0.5	2.3	2.2	3.5	2.8	14.9	13.0	12.3	19.0
JULY	0.5	0.4	0.4	0.8	2.4	2.0	2.9	2.8	22.1	20.3	13.9	27.1
AUGUST	0.6	0.5	0.6	0.8	1.7	1.5	2.9	2.2	38.1	30.3	22.1	34.8
SEPTEMBER	0.5	0.4	0.4	0.5	1.8	1.6	2.9	2.5	28.7	21.7	13.8	20.1
OCTOBER	0.7	0.4	0.4	0.5	2.2	2.1	3.0	2.8	32.8	18.7	12.4	16.9
NOVEMBER	0.5	0.4	0.7	0.6	2.5	3.2	3.2	2.8	21.0	11.4	20.8	22.3
DECEMBER	0.5	0.3	0.5	0.6	2.5	3.3	3.1	2.3	18.7	10.4	16.5	23.5
TOTAL	6.2	5.0	5.5	8.5	28.2	28.5	37.0	34.1	22.1	17.7	14.9	24.9

Table 6(b): Arrivals by Air from Morocco (Scheduled Flights), 1997 -2000

<u>MONTH</u>	<u>(000's)</u> <u>SEATS USED</u>				<u>(000's)</u> <u>SEATS OFFERED</u>				<u>%</u> <u>LOAD FACTOR</u>			
	<u>1997</u>	<u>1998</u>	<u>1999</u>	<u>2000</u>	<u>1997</u>	<u>1998</u>	<u>1999</u>	<u>2000</u>	<u>1997</u>	<u>1998</u>	<u>1999</u>	<u>2000</u>
JANUARY	0.5	0.3	-	-	3.3	2.6	0.9	0.5	13.7	12.0	4.5	7.7
FEBRUARY	0.4	0.4	0.1	0.1	2.5	2.4	0.8	0.5	16.4	17.2	6.9	14.9
MARCH	0.5	0.4	0.1	0.1	2.9	2.2	0.5	0.5	17.4	19.4	26.9	16.0
APRIL	0.5	0.3	-	0.1	2.1	1.3	-	0.4	22.8	24.9	-	15.3
MAY	0.5	0.3	-	0.1	2.4	1.2	-	0.5	21.4	22.2	-	14.8
JUNE	0.4	0.2	-	0.1	2.3	1.2	-	0.5	15.7	17.0	-	15.4
JULY	0.4	0.2	-	-	2.6	1.1	-	0.2	13.9	21.6	-	15.1
AUGUST	0.5	0.2	-	-	1.8	0.9	-	-	28.1	25.2	-	-
SEPTEMBER	0.3	0.2	-	-	2.1	0.9	-	-	16.0	22.0	-	-
OCTOBER	0.4	0.3	-	-	2.4	1.5	-	-	18.6	16.8	-	-
NOVEMBER	0.5	0.1	0.1	-	2.6	0.9	0.4	-	21.2	8.2	18.9	-
DECEMBER	0.4	0.2	-	-	2.7	1.0	0.5	-	15.5	22.3	9.5	-
TOTAL	5.3	3.2	0.4	0.4	30.0	17.2	3.1	3.0	18.0	18.4	11.5	14.0

Note: No flights were recorded arriving from Morocco after 2000. Load factors are calculated on the basis of actual figures and exclude visitors in transit.

Table 7(a): Departures by Air to Morocco (Scheduled Flights), 1993 -1996

<u>MONTH</u>	<u>(000's)</u> <u>SEATS USED</u>				<u>(000's)</u> <u>SEATS OFFERED</u>				<u>% *</u> <u>LOAD FACTOR</u>			
	<u>1993</u>	<u>1994</u>	<u>1995</u>	<u>1996</u>	<u>1993</u>	<u>1994</u>	<u>1995</u>	<u>1996</u>	<u>1993</u>	<u>1994</u>	<u>1995</u>	<u>1996</u>
JANUARY	0.7	0.7	0.4	0.7	2.6	2.7	3.4	3.2	26.5	25.5	11.3 (10.9)	21.5 (21.3)
FEBRUARY	0.7	0.4	0.3	0.8	2.3	2.5	2.8	2.7	32.0	17.9	9.6 (9.5)	30.0 (30.0)
MARCH	0.6	0.7	0.5	0.9	2.6	2.7	3.2	3.0	22.5	25.7	16.5 (16.3)	30.5 (30.4)
APRIL	0.6	0.5	0.5	0.6	3.0	2.4	3.0	2.8	21.5	19.7	17.0 (17.0)	20.6 (20.6)
MAY	0.6	0.4	0.7	0.6	2.9	2.6	3.8	3.0	22.7	14.7	18.2 (17.7)	21.1 (21.1)
JUNE	0.6	0.3	0.6	0.6	2.4	2.3	3.6	3.0	23.7	12.7	16.8 (16.2)	20.7 (20.4)
JULY	0.8	0.4	0.4	0.8	1.9	1.6	2.7	2.8	39.2	26.6	13.6 (13.5)	28.7 (28.5)
AUGUST	0.9	0.6	0.5	0.7	1.9	1.8	2.7	2.4	46.0	30.8	18.1 (17.9)	28.9 (28.9)
SEPTEMBER	0.7	0.3	0.7	0.6	2.0	1.8	2.8	2.6	37.0	18.9	24.9 (24.1)	24.7 (24.5)
OCTOBER	0.9	0.5	0.6	0.6	2.3	2.2	3.2	3.0	39.3	21.5	18.2 (17.3)	19.4 (19.1)
NOVEMBER	0.6	0.5	0.6	0.9	2.7	3.4	3.3	2.9	21.8	13.5	17.6 (17.2)	31.4 (31.4)
DECEMBER	0.6	0.4	0.6	0.6	2.5	3.3	2.9	3.0	21.8	19.3	19.0 (18.7)	20.7 (20.7)
TOTAL	8.3	5.7	6.2	8.4	29.1	29.3	37.4	34.4	28.4	19.3	16.7 (16.3)	24.7 (24.6)

Note: * Figures show both passenger and revenue load factors. The latter is derived by excluding non-paying passengers from the "seats used" column. All load factors are calculated on the basis of actual figures.

Table 7(b): Departures by Air to Morocco (Scheduled Flights), 1997 -2000

<u>MONTH</u>	<u>(000's)</u> <u>SEATS USED</u>				<u>(000's)</u> <u>SEATS OFFERED</u>				<u>% *</u> <u>LOAD FACTOR</u>			
	<u>1997</u>	<u>1998</u>	<u>1999</u>	<u>2000</u>	<u>1997</u>	<u>1998</u>	<u>1999</u>	<u>2000</u>	<u>1997</u>	<u>1998</u>	<u>1999</u>	<u>2000</u>
JANUARY	0.4	0.2	0.1	0.1	3.1	3.1	0.8	0.5	13.0 (13.0)	10.2 (9.9)	8.3 (8.0)	13.4 (13.4)
FEBRUARY	0.4	0.5	0.1	0.1	2.4	2.4	0.8	0.5	17.7 (17.1)	22.0 (21.6)	15.3 (15.1)	18.4 (18.4)
MARCH	0.4	0.3	0.1	0.1	2.9	2.9	0.5	0.5	14.6 (13.6)	14.5 (14.0)	11.2 (10.6)	17.4 (17.4)
APRIL	0.4	0.3	-	0.1	2.1	2.1	-	0.4	20.1 (19.4)	27.4 (27.0)	-	17.1 (17.1)
MAY	0.5	0.2	-	0.1	2.7	2.7	-	0.5	16.9 (16.3)	16.0 (15.9)	-	10.5 (10.5)
JUNE	0.3	0.2	-	0.1	2.3	2.3	-	0.5	14.0 (13.3)	11.9 (11.8)	-	14.4 (14.4)
JULY	0.4	0.2	-	-	2.4	2.4	-	0.2	18.5 (17.9)	12.9 (12.7)	-	16.4 (16.4)
AUGUST	0.5	0.2	-	-	2.2	2.2	-	-	24.1 (23.6)	15.3 (15.2)	-	-
SEPTEMBER	0.4	0.2	-	-	2.5	2.5	-	-	16.6 (16.1)	18.2 (18.2)	-	-
OCTOBER	0.4	0.2	-	-	2.1	2.1	-	-	18.0 (17.4)	12.4 (12.3)	-	-
NOVEMBER	0.3	0.1	0.1	-	2.3	2.3	0.4	-	13.6 (13.2)	9.5 (9.3)	13.6 (13.6)	-
DECEMBER	0.4	0.2	-	-	2.5	2.5	0.5	-	14.8 (14.4)	15.8 (15.8)	8.0 (8.0)	-
TOTAL	4.9	4.9	0.3	0.5	29.5	29.5	2.9	3.0	16.6 (16.2)	15.2 (15.0)	11.4 (11.2)	15.1 (15.1)

Note: * Figures show both passenger and revenue load factors. The latter is derived by excluding non-paying passengers from the "seats used" column. All load factors are calculated on the basis of actual figures.

** No flights departing to Morocco were recorded after 2000.

Table 8: Commercial Freight, Set Down/Picked Up, Gibraltar 1980 -2004

(000's kgs)

<u>YEAR</u>	<u>SET DOWN</u>	<u>PICKED UP</u>
1980	447	38
1981	318	64
1982	481	44
1983	381	38
1984	333	36
1985	419	40
1986	523	59
1987	499	67
1988	599	40
1989	648	45
1990	797	95
1991	596	54
1992	476	64
1993	597	74
1994	518	49
1995	504	52
1996	406	58
1997	330	57
1998	406	69
1999	433	77
2000	419	74
2001	306	71
2002	289	60
2003	325	66
2004	320	61

Note: Relates to freight from/to all destinations.

COMMERCIAL FREIGHT 1980 - 2004

