



**GOVERNMENT OF GIBRALTAR**

**AIR TRAFFIC  
SURVEY  
2003**

**STATISTICS OFFICE**

- CONTENTS -

A. B.		<u>PAGE</u>
	Preface	1
	Definitions	2
	Tables and Charts	3 - 42
<u>LIST OF TABLES</u>		
Table 1:	Arrivals/Departures by air from/to U.K. 1979 - 2003	3
Chart	Arrivals by Air from U.K. 1979 - 2003	4
Table 2: (a)	Arrivals by air from U.K. (Scheduled flights) 1979 – 1982	5
Table 2: (b)	Arrivals by air from U.K. (Scheduled flights) 1983 – 1986	6
Table 2: (c)	Arrivals by air from U.K. (Scheduled flights) 1987 – 1990	7
Table 2: (d)	Arrivals by air from U.K. (Scheduled flights) 1991 – 1994	8
Table 2: (e)	Arrivals by air from U.K. (Scheduled flights) 1995 - 1998	9
Table 2: (f)	Arrivals by air from U.K. (Scheduled flights) 1999 – 2002	10
Table 2: (g)	Arrivals by air from U.K. (Scheduled flights) 2003	11
Chart	Air Arrivals from U.K. (Scheduled flights) 2003	12
Chart	Arrivals by air from U.K. (Scheduled flights) 2003	13
Table 3: (a)	Departures by air to U.K. (Scheduled flights) 1979 – 1981	14
Table 3: (b)	Departures by air to U.K. (Scheduled flights) 1982 - 1984	15
Table 3: (c)	Departures by air to U.K. (Scheduled flights) 1985 – 1987	16
Table 3: (d)	Departures by air to U.K. (Scheduled flights) 1988 - 1990	17
Table 3: (e)	Departures by air to U.K. (Scheduled flights) 1991 – 1993	18
Table 3: (f)	Departures by air to U.K. (Scheduled flights) 1994 - 1996	19
Table 3: (g)	Departures by air to U.K. (Scheduled flights) 1997 – 1999	20
Table 3: (h)	Departures by air to U.K. (Scheduled flights) 2000 - 2002	21
Table 3: (i)	Departures by air to U.K. (Scheduled flights) 2003	22
Chart	Departures by air to U.K. (Scheduled flights) 2003	23
Chart	Departures by air to U.K. (Scheduled flights) 2003	24
Table 4: (a)	Arrivals by air from U.K. (Charter flights) 1983- 1986	25
Table 4: (b)	Arrivals by air from U.K. (Charter flights) 1987 – 1990	26
Table 4: (c)	Arrivals by air from U.K. (Charter flights) 1991, 1992, 1998, 1999	27
Table 4: (d)	Arrivals by air from U.K. (Charter flights) 2000 - 2002	28
Table 4: (e)	Arrivals by air (Charter flights) 2003	29
Table 5: (a)	Departures by air to U.K. (Charter flights) 1983 – 1986	30
Table 5: (b)	Departures by air to U.K. (Charter flights) 1987 - 1990	31
Table 5: (c)	Departures by air to U.K. (Charter flights) 1991, 1992, 1998, 1999	32
Table 5: (d)	Departures by air to U.K. (Charter flights) 2000 - 2002	33
Table 5: (e)	Departures by air (Charter flights) 2003	34
Table 6: (a)	Arrivals by air from Morocco (Scheduled flights) 1993 - 1996	35
Table 6: (b)	Arrivals by air from Morocco (Scheduled flights) 1997 – 2000	36
Table 7: (a)	Departures by air to Morocco (Scheduled flights) 1993 - 1996	37
Table 7: (b)	Departures by air to Morocco (Scheduled flights) 1997 - 2000	38
Table 8	Commercial freight, Set down/picked up, Gibraltar 1976 - 2003	39
Chart	Commercial freight 1982 - 2003	40

## A. PREFACE

The Statistics (Air Traffic Survey) Order 1971 requires that a report and summary of the findings of the Air Traffic Survey be laid before the House of Assembly. This is the twenty-eighth report and contains a summary of statistics collected for the years 1979 to 2003.

The report contains statistical data on air traffic operations between Gibraltar and other destinations for both scheduled and charter airlines. The report also includes some general data on commercial freight.

I must express my thanks to the Airlines and to Terminal Management Ltd for their continued co-operation in the conduct of this Survey.

FEBRUARY 2004

GOVERNMENT STATISTICIAN

## B. DEFINITIONS

- (a) Passenger Load Factor:  $\frac{\text{All seats used}}{\text{All seats offered (less in-transits)}} \times 100$
- (b) Revenue Load Factor:  $\frac{\text{All seats used by "paying" passengers}}{\text{All seats offered (less in-transits)}} \times 100$
- (c) Scheduled Services: are those performed according to a published timetable including those supplementary thereto, and available for use by members of the public.
- (d) Charter Services: includes all air passengers transport flights, other than scheduled services and Ministry of Defence Charters.

Table 1: Arrivals/Departures by Air from/to UK 1979 -2003

YEAR	ARRIVALS (000's)						DEPARTURES (000's)					
	TOTAL		SCHEDULED		CHARTER		TOTAL		SCHEDULED		CHARTER	
	Seats Offered	Seats Used	Seats Offered	Seats Used	Seats Offered	Seats Used	Seats Offered	Seats Used	Seats Offered	Seats Used	Seats Offered	Seats Used
1979	62.5	50.0	36.2	27.6	26.4	22.4	62.0	49.9	35.7	27.3	26.4	22.6
1980	62.8	50.0	30.2	22.9	32.7	27.1	62.7	50.9	30.0	23.1	32.7	27.8
1981	55.6	45.5	29.2	23.6	26.4	21.9	55.7	46.7	29.1	23.4	26.5	23.3
1982	60.0	47.5	35.6	27.0	24.4	20.5	60.0	47.6	35.6	26.7	24.3	20.9
1983	65.6	46.7	40.4	26.3	25.2	20.5	65.6	47.5	40.4	26.8	25.2	20.7
1984	61.3	50.3	34.6	27.4	26.7	22.9	61.2	51.0	34.6	27.6	26.7	23.4
1985	79.0	67.6	59.5	50.3	19.5	17.3	79.0	67.7	59.7	50.0	19.3	17.7
1986	101.7	83.2	96.9	79.1	4.8	4.1	101.8	84.1	96.9	80.1	4.9	4.0
1987	145.9	113.2	129.8	98.1	16.1	15.1	145.4	114.8	129.3	100.9	16.1	13.9
1988	208.7	151.2	196.0	139.6	12.7	11.6	208.3	156.1	195.6	144.6	12.7	11.5
1989	239.4	173.2	231.6	167.6	7.8	5.6	237.8	179.8	230.0	174.0	7.8	5.8
1990	172.0	141.5	165.8	136.8	6.2	4.7	175.1	148.5	168.9	143.8	6.2	4.7
1991	140.4	105.9	126.0	94.9	14.4	11.0	142.5	108.0	127.8	96.6	14.7	11.4
1992	127.4	98.1	127.0	97.7	0.4	0.4	128.2	101.0	127.7	100.5	0.5	0.4
1993	111.5	91.3	111.4	91.2	0.1	0.1	112.2	93.3	112.2	93.3	0.0	0.0
1994	106.4	85.2	106.4	85.2	0.0	0.0	107.1	86.9	207.2	86.9	0.0	0.0
1995	109.4	83.8	109.4	83.8	0.0	0.0	109.5	85.3	109.5	85.3	0.0	0.0
1996	98.7	78.1	98.7	78.1	0.0	0.0	98.1	78.2	98.1	78.2	0.0	0.0
1997	106.6	83.2	106.6	83.2	0.0	0.0	104.4	81.5	104.4	81.5	0.0	0.0
1998	121.5	92.0	120.4	91.0	1.2	1.1	120.2	91.0	119.0	90.1	1.2	0.9
1999	127.5	98.3	126.5	97.8	1.0	0.5	127.5	97.9	126.5	97.4	1.0	0.5
2000	139.4	104.3	138.6	103.7	0.8	0.5	138.9	107.1	138.1	106.6	0.8	0.5
2001	138.0	109.0	137.7	108.8	0.3	0.2	138.2	110.6	137.9	110.5	0.4	0.2
2002	147.2	116.6	146.3	115.7	0.9	0.9	147.0	114.8	146.1	114.0	0.9	0.9
2003	173.5	135.0	170.3	133.0	3.3	2.0	173.1	134.8	169.8	132.9	3.3	1.9

Note: Charter flights as from 1998 include all destinations. The figures in respect of charter flights for 1991 have been amended. The original figures excluded those for July of that year. The yearly totals have been rounded off from the actual figure and need not necessarily equal the sum of the rounded off sub-totals.

# ARRIVALS BY AIR FROM UK - 1979 - 2003

(000's)

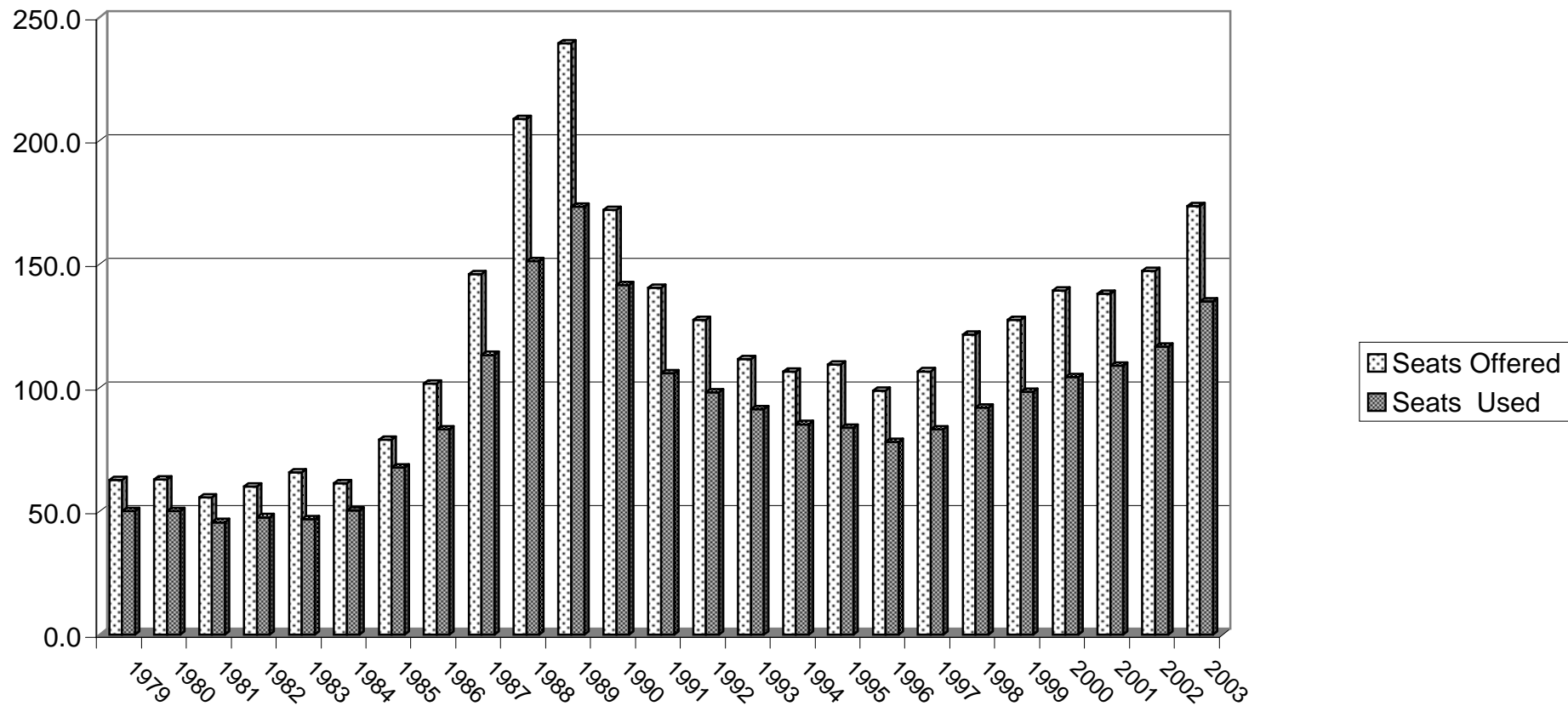


Table 2(a): Arrivals by air from U.K. (Scheduled Flights) 1979 -1982

MONTH	SEATS USED (000's)				SEATS OFFERED (000's)				LOAD FACTOR (%) *			
	1979	1980	1981	1982	1979	1980	1981	1982	1979	1980	1981	1982
JANUARY	1.6	1.6	1.5	1.7	2.6	2.8	2.1	2.2	62.6	57.3	70.6	78.2
FEBRUARY	1.5	1.5	1.5	1.8	2.3	2.7	1.9	2.2	65.1	57.8	81.1	77.5
MARCH	2.4	2.3	1.9	2.0	2.7	2.8	2.2	2.1	88.7	83.6	88.2	95.9
APRIL	2.5	1.7	2.2	2.8	3.2	2.4	2.7	3.2	77.7	70.3	79.3	86.7
MAY	2.6	2.0	1.9	2.3	3.4	2.5	2.7	3.2	76.6	79.2	67.7	72.4
JUNE	2.3	2.0	1.9	2.3	3.3	2.4	2.6	3.3	70.5	81.1	72.5	70.9
JULY	3.0	2.5	2.4	2.7	3.1	2.8	2.8	3.5	93.7	89.4	85.5	77.8
AUGUST	3.0	2.4	2.4	2.8	3.4	2.7	2.6	3.3	89.9	91.1	93.3	82.4
SEPTEMBER	2.6	1.7	1.9	2.4	3.4	2.5	2.7	3.4	76.9	67.4	71.9	70.8
OCTOBER	2.7	2.3	2.3	2.3	3.4	2.8	2.7	3.4	79.1	81.3	85.2	69.0
NOVEMBER	1.6	1.3	1.8	1.9	2.7	1.9	2.1	2.9	58.8	70.7	85.0	65.2
DECEMBER	1.8	1.6	1.9	2.0	2.7	1.9	2.1	2.9	66.3	82.6	91.4	70.5
TOTAL	27.6	22.9	23.6	27.0	36.2	30.2	29.2	35.6	76.2	76.0	80.7	75.9

Note: \* All load factors are calculated on the basis of actual figures. The total yearly figure has been rounded off from the actual figure and need not necessarily equal the sum of the rounded off monthly figures.

Table 2(b): Arrivals by air from U.K. (Scheduled Flights) 1983 -1986

MONTH	SEATS USED (000's)				SEATS OFFERED (000's)				LOAD FACTOR (%)*			
	1983	1984	1985	1986	1983	1984	1985	1986	1983	1984	1985	1986
JANUARY	1.6	1.5	2.1	4.1	2.9	2.6	2.6	7.0	55.0	59.8	79.1	58.6
FEBRUARY	1.5	1.7	2.0	4.4	2.6	2.1	2.2	5.9	59.0	81.8	90.9	75.2
MARCH	2.1	2.1	3.0	6.5	3.0	2.4	3.2	7.1	70.3	87.2	97.0	92.2
APRIL	2.3	2.5	3.9	5.6	3.9	3.1	4.6	7.2	59.2	79.2	84.8	77.4
MAY	2.2	2.3	3.9	7.4	4.0	3.2	4.4	8.7	55.4	70.1	89.5	84.8
JUNE	2.4	2.2	4.3	7.1	3.9	3.3	5.0	8.5	60.3	68.9	86.4	83.2
JULY	3.0	2.9	5.4	8.3	4.0	3.4	5.7	9.0	74.4	86.1	95.2	92.2
AUGUST	2.8	2.8	5.8	8.7	4.0	3.2	6.5	9.8	70.5	86.7	89.2	88.2
SEPTEMBER	2.7	2.5	4.7	7.6	3.9	3.2	5.8	8.9	68.0	76.4	79.8	85.0
OCTOBER	2.3	2.6	5.1	7.8	3.6	3.2	5.8	9.1	63.0	79.3	86.7	85.4
NOVEMBER	1.6	2.0	4.6	5.1	2.2	2.4	6.3	7.4	71.1	85.0	73.4	69.4
DECEMBER	1.8	2.3	5.5	6.5	2.4	2.5	7.4	8.2	77.1	90.1	74.1	78.6
TOTAL	26.3	27.4	50.3	79.1	40.4	34.6	59.5	96.9	65.0	79.0	84.5	81.6

Note: \* All load factors are calculated on the basis of actual figures. The total yearly figure has been rounded off from the actual figure and need not necessarily equal the sum of the rounded off monthly figures.



Table 2(c): Arrivals by air from U.K. (Scheduled Flights) 1987 -1990

MONTH	SEATS USED (000's)				SEATS OFFERED (000's)				LOAD FACTOR (%) *			
	1987	1988	1989	1990	1987	1988	1989	1990	1987	1988	1989	1990
JANUARY	4.7	7.0	9.7	10.0	7.8	12.7	18.0	15.1	60.3	55.2	53.9	66.3
FEBRUARY	5.0	8.4	10.4	10.6	6.6	11.3	14.4	13.1	76.2	74.9	72.4	81.1
MARCH	7.0	10.6	13.6	12.9	8.6	13.1	17.8	14.8	81.9	81.2	76.3	87.1
APRIL	7.6	10.4	11.9	11.6	8.4	14.2	17.6	14.2	90.0	73.7	67.7	82.2
MAY	9.0	13.1	14.9	12.2	11.4	17.2	19.3	13.8	79.3	76.3	77.2	88.1
JUNE	8.1	11.9	14.7	12.1	12.0	16.2	19.8	13.7	67.7	73.6	74.3	88.3
JULY	10.6	15.5	20.3	13.9	12.4	19.5	24.8	14.6	85.3	79.7	81.8	95.5
AUGUST	10.7	14.6	18.5	12.5	12.4	18.1	24.4	14.3	85.9	80.7	75.8	87.2
SEPTEMBER	8.7	14.0	16.5	12.3	11.6	18.0	22.2	13.9	74.8	77.9	74.3	88.5
OCTOBER	9.8	14.1	16.3	11.5	12.4	18.4	22.5	14.5	79.4	76.7	72.1	79.2
NOVEMBER	7.7	8.9	9.9	8.4	13.0	14.7	15.5	11.6	59.4	60.2	63.7	72.2
DECEMBER	8.7	10.9	10.9	8.8	12.9	16.3	15.3	12.1	67.4	67.3	71.5	72.3
TOTAL	97.6	139.4	167.6	136.8	129.5	189.7	231.6	165.6	75.2	73.5	72.4	82.5

Note: \* All load factors are calculated on the basis of actual figures. The total yearly figure has been rounded off from the actual figure and need not necessarily equal the sum of the rounded off monthly figures.

Table 2(d): Arrivals by air from U.K. (Scheduled Flights) 1991 -1994

MONTH	SEATS USED (000's)				SEATS OFFERED (000's)				LOAD FACTOR (%) *			
	1991	1992	1993	1994	1991	1992	1993	1994	1991	1992	1993	1994
JANUARY	7.3	6.2	5.7	5.1	12.2	10.0	7.4	7.1	59.3	61.2	77.9	71.3
FEBRUARY	6.8	6.2	5.5	5.0	10.4	8.7	6.1	5.9	65.9	71.0	90.7	83.5
MARCH	7.4	7.7	7.1	6.9	9.2	9.2	7.5	7.4	81.3	83.0	95.9	93.8
APRIL	6.7	9.1	8.2	6.7	7.9	12.8	10.2	9.4	84.1	71.1	79.9	71.0
MAY	7.5	9.3	8.6	8.3	8.3	12.5	11.1	9.9	90.7	74.1	76.7	83.2
JUNE	7.9	9.6	8.6	8.3	9.5	12.0	11.1	10.6	83.5	79.8	77.7	79.0
JULY	10.8	11.5	10.1	9.6	12.3	12.5	10.9	10.8	88.1	92.2	92.3	89.0
AUGUST	9.7	9.8	8.8	8.4	11.9	12.6	11.0	11.2	81.3	77.4	79.9	75.4
SEPTEMBER	9.0	6.9	8.7	8.3	11.5	8.3	10.7	10.2	78.1	82.9	81.5	80.8
OCTOBER	8.6	9.0	7.9	7.5	11.7	11.9	11.2	9.8	74.0	75.6	70.5	76.3
NOVEMBER	6.7	6.6	6.1	5.3	11.1	8.8	7.3	6.9	60.4	74.7	84.0	76.3
DECEMBER	6.5	6.0	5.8	5.9	10.2	7.5	6.9	7.2	63.4	79.5	84.8	82.4
TOTAL	94.9	97.7	91.2	85.2	126.0	127.0	111.4	106.4	75.3	76.9	81.9	80.0

Note: \* All load factors are calculated on the basis of actual figures. The total yearly figure has been rounded off from the actual figure and need not necessarily equal the sum of the rounded off monthly figures.

Table 2(e): Arrivals by air from U.K. (Scheduled Flights) 1995 -1998

MONTH	SEATS USED (000's)				SEATS OFFERED (000's)				LOAD FACTOR (%) *			
	1995	1996	1997	1998	1995	1996	1997	1998	1995	1996	1997	1998
JANUARY	4.1	4.6	4.6	4.8	7.8	7.7	7.9	9.4	53.0	53.9	57.8	51.1
FEBRUARY	5.6	5.5	5.2	6.0	6.6	7.7	6.3	9.0	84.2	68.9	83.0	66.4
MARCH	7.3	7.0	6.1	7.6	7.8	8.4	6.9	9.8	93.8	83.7	87.4	78.1
APRIL	7.7	6.3	5.4	7.8	10.1	8.5	6.6	10.0	76.0	74.3	82.3	77.9
MAY	8.1	7.7	8.6	9.0	10.3	9.0	9.9	11.4	78.1	86.4	86.4	79.0
JUNE	7.6	7.5	7.6	8.0	9.8	8.7	9.4	10.9	77.0	85.6	80.2	73.6
JULY	8.8	7.6	8.6	9.3	10.3	8.4	9.5	10.6	85.8	90.7	90.8	87.3
AUGUST	7.8	6.6	8.3	9.2	10.1	7.5	10.0	11.2	77.7	87.8	83.4	82.2
SEPTEMBER	7.2	7.2	8.1	8.4	9.3	8.4	10.7	10.7	77.7	86.4	75.6	78.0
OCTOBER	7.3	6.6	8.5	8.2	10.0	8.5	10.4	11.2	73.7	78.3	81.1	73.1
NOVEMBER	5.8	5.8	5.9	6.5	8.4	7.8	9.2	8.4	69.5	74.5	63.7	78.0
DECEMBER	6.5	5.7	6.4	6.3	8.9	8.1	9.8	7.9	73.8	70.7	65.8	79.7
TOTAL	83.8	78.1	83.2	91.0	109.4	98.7	106.6	120.4	76.7	79.1	78.0	75.6

Note: \* All load factors are calculated on the basis of actual figures. The total yearly figure has been rounded off from the actual figure and need not necessarily equal the sum of the rounded off monthly figures.

Table 2(f): Arrivals by air from U.K. (Scheduled Flights) 1999 -2002

MONTH	SEATS USED (000's)				SEATS OFFERED (000's)				LOAD FACTOR (%) *			
	1999	2000	2001	2002	1999	2000	2001	2002	1999	2000	2001	2002
JANUARY	5.2	4.6	5.4	5.5	8.4	11.1	9.4	9.3	62.5	41.5	57.3	59.6
FEBRUARY	6.3	6.2	6.9	7.6	7.4	9.8	8.3	8.9	84.5	63.6	82.7	85.9
MARCH	8.1	8.7	8.6	10.2	8.8	10.7	9.8	11.7	91.4	81.3	87.9	87.4
APRIL	7.8	9.1	9.0	8.0	9.8	10.4	10.6	10.7	80.4	87.2	84.5	75.2
MAY	10.0	10.1	11.1	10.4	12.5	13.4	13.2	14.1	80.3	75.9	83.6	73.8
JUNE	9.8	9.7	11.0	10.4	11.8	12.4	12.8	13.3	82.7	78.3	85.7	78.3
JULY	10.7	10.8	11.7	13.2	12.4	13.4	13.5	14.6	85.8	80.8	86.6	90.4
AUGUST	9.2	10.1	10.5	12.2	11.6	12.9	13.4	14.3	79.2	78.1	78.3	85.5
SEPTEMBER	8.9	10.5	10.2	11.4	11.8	12.7	12.8	13.6	75.6	82.5	79.5	83.6
OCTOBER	8.3	10.0	9.5	11.0	11.7	13.4	13.4	14.4	70.3	74.6	70.9	76.4
NOVEMBER	6.5	7.0	7.5	8.0	9.7	9.1	10.6	10.7	67.0	76.2	71.1	74.7
DECEMBER	7.1	7.0	7.5	7.6	10.6	9.3	9.7	10.7	66.9	75.0	76.5	71.4
TOTAL	97.8	103.7	108.8	115.7	126.5	138.6	137.7	146.3	77.3	74.9	79.0	79.1

Note: \* All load factors are calculated on the basis of actual figures. The total yearly figure has been rounded off from the actual figure and need not necessarily equal the sum of the rounded off monthly figures.

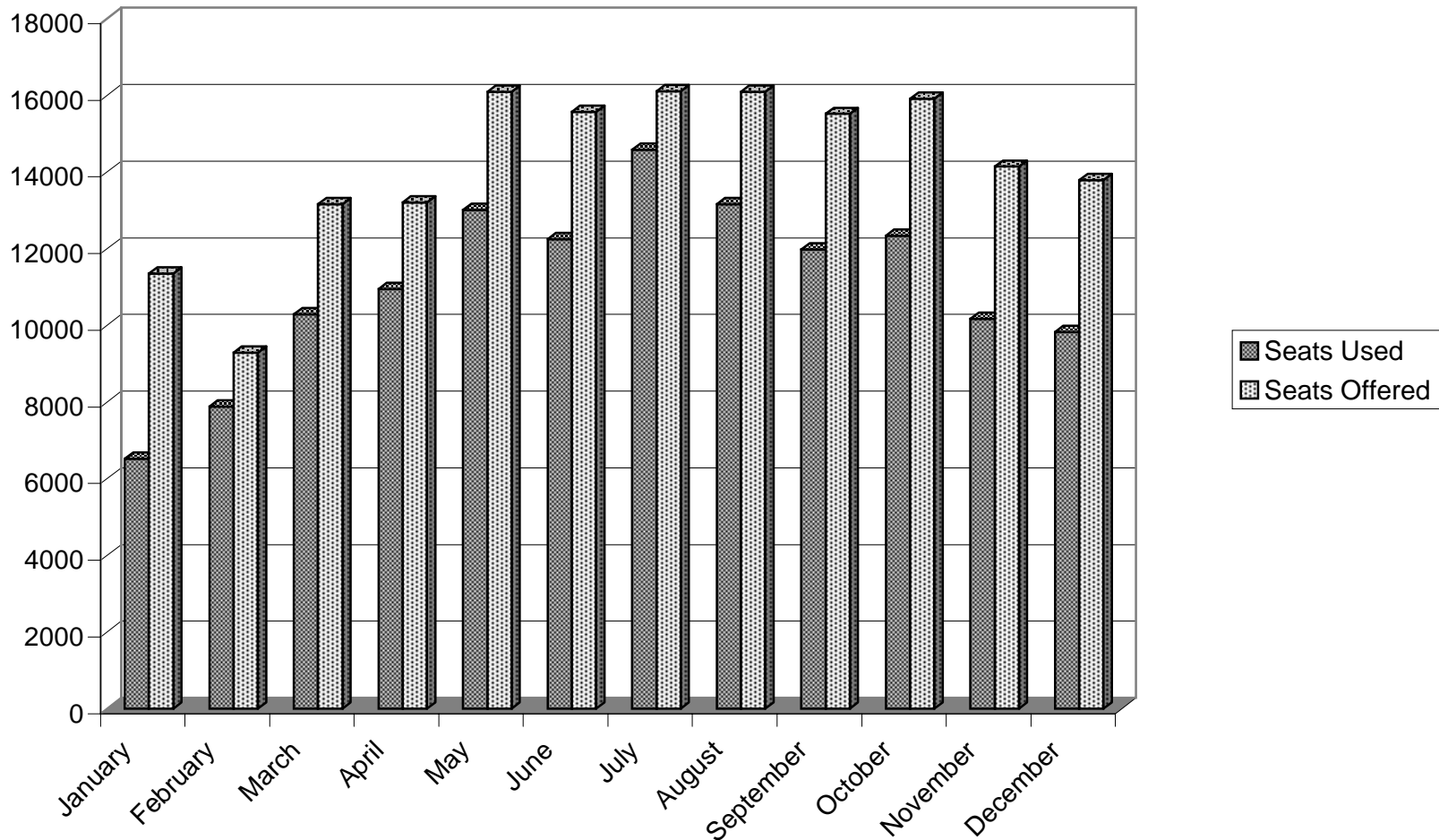
Table 2 (g): Arrivals by air from U. K. (Scheduled Flights) 2003

2003

MONTH	SEATS USED (000's)	SEATS OFFERED (000's)	LOAD FACTOR %
January	6.5	11.4	57.4
February	7.9	9.3	84.8
March	10.3	13.2	78.2
April	11.0	13.2	82.9
May	13.0	16.1	80.9
June	12.2	15.6	78.6
July	14.6	16.1	90.6
August	13.2	16.1	81.8
September	12.0	15.5	77.2
October	12.3	15.9	77.5
November	10.2	14.1	71.9
December	9.8	13.8	71.3
TOTAL	133.0	170.3	78.1

Note: Load factors are calculated on the basis of actual figures and exclude visitors in transit. The total yearly figures have been rounded off from the actual figures and need not necessarily equal the sum of the rounded off monthly figures.

# AIR ARRIVALS FROM UK (SCHEDULED FLIGHTS) - 2003



## ARRIVALS BY AIR FROM UK (SCHEDULED FLIGHTS) 2003

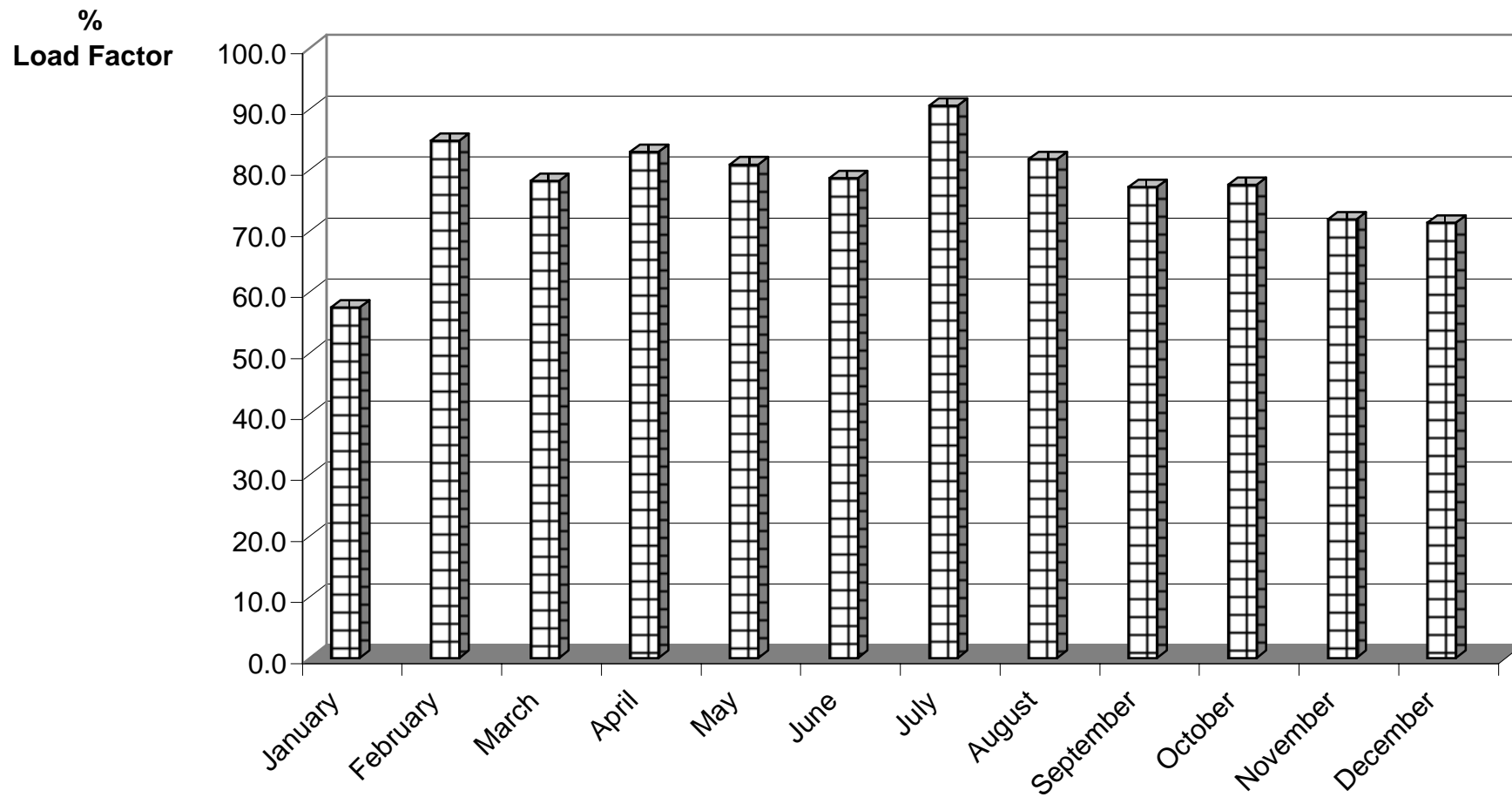


Table 3(a): Departures by air to U.K. (Scheduled Flights) 1979 -1981

MONTH	SEATS USED (000's)			SEATS OFFERED (000's)			LOAD FACTOR (%)		
	1979	1980	1981	1979	1980	1981	1979 * (**)	1980 * (**)	1981 * (**)
JANUARY	1.7	1.7	1.6	2.5	2.8	2.1	69.0 (63.5)	59.3 (56.6)	75.9 (73.2)
FEBRUARY	1.4	1.5	1.5	2.3	2.7	1.9	65.0 (53.9)	56.6 (52.3)	79.3 (74.7)
MARCH	2.4	2.1	1.6	2.6	2.8	2.1	91.4 (83.6)	75.7 (67.7)	76.5 (70.9)
APRIL	2.5	2.0	2.2	3.2	2.4	2.7	80.0 (76.9)	84.7 (81.9)	83.0 (80.7)
MAY	2.3	1.7	1.8	3.4	2.5	2.7	69.5 (65.2)	69.0 (64.0)	64.4 (61.6)
JUNE	2.3	2.0	1.8	3.2	2.3	2.6	69.8 (66.3)	84.4 (80.4)	72.0 (69.3)
JULY	2.5	2.1	2.0	3.1	2.7	2.8	79.3 (77.3)	77.1 (74.5)	69.0 (65.9)
AUGUST	3.3	2.6	2.4	3.4	2.7	2.6	97.3 (95.1)	96.9 (95.4)	92.4 (89.9)
SEPTEMBER	2.9	2.2	2.4	3.3	2.5	2.7	88.6 (85.2)	84.8 (82.1)	89.2 (84.8)
OCTOBER	2.8	2.4	2.4	3.3	2.8	2.7	82.9 (78.0)	87.5 (82.8)	87.7 (84.0)
NOVEMBER	1.7	1.3	1.9	2.7	1.9	2.1	63.9 (59.8)	70.6 (65.2)	89.6 (84.3)
DECEMBER	1.5	1.5	1.8	2.7	1.9	2.1	55.3 (52.0)	78.1 (75.4)	86.1 (83.2)
TOTAL	27.3	23.1	23.4	35.7	30.0	29.1	76.5 (72.6)	77.0 (73.2)	80.2 (76.7)

Note: \* All load factors are calculated on the basis of actual figures. The total yearly figure has been rounded off from the actual figure and need not necessarily equal the sum of the rounded off monthly figures.

\*\* Revenue load factors exclude non-paying passengers and are also calculated on actual figures.



Table 3(b): Departures by air to U.K. (Scheduled Flights) 1982 -1984

MONTH	SEATS USED (000's)			SEATS OFFERED (000's)			LOAD FACTOR (%)		
	1982	1983	1984	1982	1983	1984	1982 * (**)	1983 * (**)	1984 * (**)
JANUARY	1.9	1.7	2.1	2.2	2.9	2.6	85.2 (82.5)	61.2 (58.8)	80.5 (77.6)
FEBRUARY	1.6	1.5	1.5	2.3	2.6	2.1	70.9 (67.4)	56.6 (53.7)	72.6 (69.7)
MARCH	1.9	2.0	2.0	2.1	3.0	2.4	91.3 (86.2)	67.2 (61.7)	85.2 (81.3)
APRIL	2.6	2.6	2.5	3.2	3.9	3.1	82.1 (80.3)	65.8 (63.4)	80.3 (77.6)
MAY	2.1	2.0	2.0	3.2	4.0	3.2	67.0 (65.3)	48.6 (47.0)	64.0 (61.7)
JUNE	2.3	2.6	2.4	3.4	3.9	3.2	69.3 (67.4)	65.5 (64.2)	74.3 (72.2)
JULY	2.5	2.4	2.3	3.5	4.0	3.3	70.4 (69.3)	60.8 (59.2)	69.6 (68.0)
AUGUST	3.0	3.3	3.1	3.3	4.0	3.3	90.6 (88.6)	81.4 (79.5)	94.1 (92.2)
SEPTEMBER	2.8	3.1	3.0	3.4	3.9	3.3	83.1 (81.5)	78.3 (75.3)	92.5 (89.5)
OCTOBER	2.5	2.5	2.6	3.4	3.6	3.2	72.2 (68.2)	69.9 (66.6)	80.5 (76.2)
NOVEMBER	1.9	1.6	2.1	2.8	2.2	2.4	67.7 (64.2)	74.2 (71.1)	87.9 (83.0)
DECEMBER	1.6	1.5	2.0	2.8	2.4	2.5	55.2 (53.5)	63.3 (61.4)	78.9 (77.4)
TOTAL	26.7	26.8	27.6	35.6	40.4	34.6	75.1 (72.6)	66.2 (63.7)	80.0 (77.2)

Note: \* All load factors are calculated on the basis of actual figures. The total yearly figure has been rounded off from the actual figure and need not necessarily equal the sum of the rounded off monthly figures.

\*\* Revenue load factors exclude non-paying passengers and are also calculated on actual figures.

Table 3(c): Departures by air to U.K. (Scheduled Flights) 1985 -1987

MONTH	SEATS USED (000's)			SEATS OFFERED (000's)			LOAD FACTOR (%)		
	1985	1986	1987	1985	1986	1987	1985 * (**)	1986 * (**)	1987 * (**)
JANUARY	2.3	5.2	6.4	2.6	6.9	7.9	89.3 (87.0)	75.8 (74.2)	80.6 (79.4)
FEBRUARY	1.9	4.1	4.7	2.2	5.9	6.6	85.9 (82.8)	70.0 (66.1)	70.8 (68.0)
MARCH	2.8	6.0	7.0	3.2	7.1	8.6	89.9 (86.4)	84.1 (82.8)	81.8 (78.1)
APRIL	4.0	6.8	7.5	4.6	7.3	8.3	89.0 (87.3)	92.0 (90.5)	90.2 (89.1)
MAY	3.6	6.3	8.7	4.4	8.6	11.2	81.7 (79.9)	73.9 (72.4)	77.8 (76.1)
JUNE	4.3	7.5	8.7	5.0	8.6	11.9	85.5 (84.4)	87.1 (85.9)	72.9 (71.4)
JULY	4.3	6.9	8.7	5.6	9.0	12.1	76.3 (75.5)	76.6 (75.4)	71.9 (70.6)
AUGUST	6.2	9.2	11.6	6.5	9.8	12.5	94.3 (93.4)	93.4 (92.7)	92.5 (91.7)
SEPTEMBER	5.6	8.6	10.6	5.9	9.0	11.7	94.1 (92.4)	95.7 (94.1)	90.3 (89.2)
OCTOBER	5.2	8.5	10.5	5.9	9.1	12.5	89.2 (86.8)	93.0 (91.1)	84.1 (82.5)
NOVEMBER	5.4	6.2	9.4	6.3	7.4	12.9	85.6 (82.7)	83.8 (81.2)	72.3 (71.1)
DECEMBER	4.4	4.9	6.9	7.5	8.2	13.0	58.9 (58.0)	59.7 (58.5)	55.6 (53.6)
TOTAL	50.0	80.1	100.7	59.7	96.9	129.2	83.9 (82.1)	82.7 (81.1)	77.8 (77.7)

Note: \* All load factors are calculated on the basis of actual figures. The total yearly figure has been rounded off from the actual figure and need not necessarily equal the sum of the rounded off monthly figures.

\*\* Revenue load factors exclude non-paying passengers and are also calculated on actual figures.

Table 3(d): Departures by air to U.K. (Scheduled Flights) 1988 -1990

MONTH	SEATS USED (000's)			SEATS OFFERED (000's)			LOAD FACTOR (%)		
	1988	1989	1990	1988	1989	1990	1988 * (**)	1989 * (**)	1990 * (**)
JANUARY	9.0	12.2	11.4	12.7	18.0	15.4	70.6 (69.7)	67.7 (66.4)	74.3 (73.0)
FEBRUARY	8.2	10.2	10.5	11.2	14.4	13.3	73.1 (72.0)	70.9 (69.3)	79.1 (77.2)
MARCH	9.4	11.9	12.3	12.9	17.8	14.4	73.0 (71.5)	67.1 (65.0)	85.0 (83.2)
APRIL	12.2	13.6	13.0	14.4	17.5	14.6	85.0 (83.6)	77.3 (76.3)	89.2 (87.9)
MAY	11.6	13.3	11.7	16.8	18.7	14.2	68.9 (67.8)	70.7 (69.4)	82.2 (80.6)
JUNE	14.1	15.9	13.2	16.6	19.5	14.1	85.1 (83.8)	81.6 (80.5)	93.3 (92.0)
JULY	13.3	17.1	12.5	17.5	24.5	14.6	76.0 (75.3)	70.0 (69.0)	86.0 (84.7)
AUGUST	15.9	20.9	13.7	18.1	24.5	15.2	87.9 (87.3)	85.1 (84.4)	90.5 (89.8)
SEPTEMBER	15.4	18.4	13.4	17.8	22.0	14.3	86.2 (85.2)	83.5 (82.5)	93.2 (91.7)
OCTOBER	15.5	18.3	13.8	18.2	22.5	14.7	85.5 (84.4)	81.5 (80.1)	93.5 (92.2)
NOVEMBER	11.0	11.9	9.6	14.9	15.5	12.0	74.3 (72.4)	77.2 (75.3)	80.5 (77.5)
DECEMBER	8.7	10.2	8.7	16.1	15.0	12.1	53.8 (53.1)	68.2 (67.1)	71.8 (70.2)
TOTAL	144.3	174.0	143.8	187.2	230.0	168.9	77.1 (76.1)	75.7 (70.5)	85.1 (83.6)

Note: \* All load factors are calculated on the basis of actual figures. The total yearly figure has been rounded off from the actual figure and need not necessarily equal the sum of the rounded off monthly figures.

\*\* Revenue load factors exclude non-paying passengers and are also calculated on actual figures.

Table 3(e): Departures by air to U.K. (Scheduled Flights) 1991 -1993

MONTH	SEATS USED (000's)			SEATS OFFERED (000's)			LOAD FACTOR (%)		
	1991	1992	1993	1991	1992	1993	1991 * (**)	1992 * (**)	1993 * (**)
JANUARY	7.5	6.7	6.1	12.1	10.2	7.6	62.1 (60.6)	65.9 (64.8)	80.5 (79.3)
FEBRUARY	6.7	6.2	5.4	10.3	8.6	6.4	65.4 (63.2)	72.5 (70.2)	83.8 (82.9)
MARCH	6.2	7.0	6.7	8.7	9.2	7.8	71.3 (69.1)	76.0 (73.8)	86.1 (84.7)
APRIL	7.8	9.5	8.3	8.6	12.8	10.0	90.2 (87.6)	74.3 (73.2)	82.3 (81.0)
MAY	6.9	8.6	7.9	8.2	12.6	11.1	83.6 (81.0)	68.1 (66.8)	71.3 (69.8)
JUNE	7.9	9.8	9.4	9.8	12.2	11.1	80.5 (77.9)	80.4 (79.1)	84.1 (82.9)
JULY	9.2	9.8	8.7	12.4	12.5	11.3	73.8 (71.2)	78.5 (76.7)	77.5 (76.7)
AUGUST	11.0	11.5	10.0	12.3	12.8	10.9	89.5 (87.0)	89.7 (88.8)	91.4 (90.5)
SEPTEMBER	9.9	7.6	9.7	12.2	8.2	10.5	81.7 (78.7)	91.9 (90.2)	92.2 (91.0)
OCTOBER	10.1	10.5	9.5	12.1	11.9	11.1	83.3 (81.5)	87.7 (85.9)	86.0 (85.0)
NOVEMBER	7.3	7.8	6.5	10.9	9.0	7.3	67.0 (65.4)	86.0 (84.2)	88.8 (87.3)
DECEMBER	6.1	5.6	5.1	10.2	7.6	6.9	59.7 (58.5)	73.8 (72.5)	73.2 (72.4)
TOTAL	96.6	100.5	93.3	127.8	127.7	112.2	75.6 (73.3)	78.7 (77.2)	83.2 (82.0)

Note: \* All load factors are calculated on the basis of actual figures. The total yearly figure has been rounded off from the actual figure and need not necessarily equal the sum of the rounded off monthly figures.

\*\* Revenue load factors exclude non-paying passengers and are also calculated on actual figures.

Table 3(f): Departures by air to U.K. (Scheduled Flights) 1994 -1996

MONTH	SEATS USED (000's)			SEATS OFFERED (000's)			LOAD FACTOR (%)		
	1994	1995	1996	1994	1995	1996	1994 * (**)	1995 * (**)	1996 * (**)
JANUARY	5.8	5.5	5.3	7.1	7.8	7.7	81.9 (80.8)	70.8 (70.3)	69.4 (69.0)
FEBRUARY	5.0	5.2	5.6	6.2	6.9	8.2	81.7 (80.1)	75.1 (74.4)	68.1 (67.6)
MARCH	5.5	6.6	6.3	7.5	7.7	8.1	74.1 (72.9)	85.1 (84.6)	77.1 (76.4)
APRIL	7.6	8.3	7.0	9.3	10.3	8.7	81.9 (81.2)	80.5 (80.3)	81.0 (80.7)
MAY	7.6	7.3	7.0	10.1	10.4	8.7	76.3 (75.2)	69.8 (69.4)	79.9 (79.5)
JUNE	8.7	8.2	8.1	10.4	9.9	9.1	84.8 (83.7)	82.5 (82.0)	89.5 (89.1)
JULY	8.4	7.9	6.8	10.9	10.3	8.6	77.0 (77.5)	76.5 (76.0)	79.1 (79.0)
AUGUST	9.7	8.5	6.8	10.9	10.3	7.6	89.0 (88.3)	82.8 (82.4)	89.7 (89.5)
SEPTEMBER	9.3	8.4	8.0	10.2	9.6	8.5	91.8 (91.2)	87.6 (87.0)	93.5 (93.2)
OCTOBER	8.9	8.3	7.3	10.2	9.9	8.3	88.3 (87.5)	83.0 (82.4)	88.6 (88.2)
NOVEMBER	5.6	6.3	5.9	6.8	8.5	7.6	83.3 (82.4)	73.8 (73.1)	77.7 (77.1)
DECEMBER	4.8	4.8	4.1	7.2	7.9	7.0	67.3 (66.9)	61.5 (60.8)	58.8 (58.4)
TOTAL	86.9	85.3	78.2	107.1	109.5	98.1	81.2 (80.3)	77.8 (77.3)	79.6 (79.0)

Note: \* All load factors are calculated on the basis of actual figures. The total yearly figure has been rounded off from the actual figure and need not necessarily equal the sum of the rounded off monthly figures.

\*\* Revenue load factors exclude non-paying passengers and are also calculated on actual figures.

Table 3(g): Departures by air to U.K. (Scheduled Flights) 1997 -1999

MONTH	SEATS USED (000's)			SEATS OFFERED (000's)			LOAD FACTOR (%)		
	1997	1998	1999	1997	1998	1999	1997 * (**)	1998 * (**)	1999 * (**)
JANUARY	4.7	6.0	6.3	6.8	9.5	8.5	68.5 (67.4)	63.1 (62.7)	74.1 (73.9)
FEBRUARY	5.1	5.3	5.7	6.4	8.7	7.5	79.4 (78.3)	60.7 (60.2)	75.1 (74.3)
MARCH	5.2	6.7	7.0	6.8	9.9	8.5	76.4 (75.5)	67.9 (67.9)	82.8 (82.7)
APRIL	6.1	8.2	8.7	6.7	10.0	9.8	90.1 (89.7)	81.9 (81.7)	89.0 (88.5)
MAY	7.7	8.0	8.9	9.6	11.2	12.5	79.8 (79.2)	71.3 (70.9)	71.0 (71.0)
JUNE	7.9	8.1	10.0	9.5	10.8	11.6	83.2 (83.0)	74.6 (74.2)	86.3 (86.3)
JULY	7.5	7.7	9.4	9.7	10.3	12.5	77.0 (76.7)	74.5 (74.3)	75.7 (75.7)
AUGUST	8.7	9.9	9.6	9.5	11.1	11.4	91.7 (91.4)	89.5 (89.4)	84.7 (84.7)
SEPTEMBER	8.8	9.2	10.2	10.5	10.4	11.8	83.8 (83.5)	88.5 (88.4)	86.3 (86.3)
OCTOBER	8.6	8.9	9.0	9.6	11.0	11.8	90.0 (89.6)	80.5 (80.3)	76.4 (76.4)
NOVEMBER	6.5	7.1	7.4	9.2	8.3	10.0	70.3 (70.0)	84.9 (84.4)	74.4 (74.4)
DECEMBER	4.7	5.0	5.1	10.1	7.6	10.6	46.3 (46.1)	66.2 (65.5)	48.0 (47.9)
TOTAL	81.5	90.1	97.4	104.4	119.0	126.5	78.1 (77.6)	75.7 (75.4)	77.0 (76.9)

Note: \* All load factors are calculated on the basis of actual figures. The total yearly figure has been rounded off from the actual figure and need not necessarily equal the sum of the rounded off monthly figures.

\*\* Revenue load factors exclude non-paying passengers and are also calculated on actual figures.

Table 3(h): Departures by air to U.K. (Scheduled Flights) 2000 -2002

MONTH	SEATS USED (000's)			SEATS OFFERED (000's)			LOAD FACTOR (%)		
	2000	2001	2002	2000	2001	2002	2000 * (**)	2001 * (**)	2002 * (**)
JANUARY	6.5	6.6	6.4	11.1	9.4	9.5	58.8 (58.7)	70.2 (70.2)	67.7 (67.7)
FEBRUARY	6.0	6.6	7.0	9.8	8.4	8.9	61.5 (61.4)	78.9 (78.9)	78.4 (78.4)
MARCH	8.0	7.9	8.4	10.6	9.8	11.1	75.2 (74.9)	81.0 (81.0)	75.7 (75.7)
APRIL	9.1	9.4	9.3	10.1	10.6	10.7	89.4 (89.3)	87.9 (87.9)	86.5 (86.5)
MAY	9.9	10.2	9.4	13.3	13.3	14.1	74.5 (74.5)	76.7 (76.7)	66.5 (66.5)
JUNE	10.5	11.0	10.5	12.4	12.9	13.3	84.9 (84.8)	85.7 (85.7)	79.1 (79.1)
JULY	9.8	10.3	10.8	13.4	13.5	14.8	73.0 (72.9)	76.0 (76.0)	72.9 (72.9)
AUGUST	10.6	11.5	13.1	12.7	13.4	14.5	83.6 (83.5)	85.4 (85.4)	90.5 (90.5)
SEPTEMBER	11.7	11.1	12.6	12.8	12.8	13.6	91.4 (91.2)	86.6 (86.6)	92.7 (92.7)
OCTOBER	11.1	11.3	11.7	13.2	13.5	14.4	84.2 (84.1)	83.9 (83.9)	81.3 (81.3)
NOVEMBER	7.5	8.5	8.6	9.2	10.7	10.7	82.1 (82.0)	79.9 (79.9)	80.6 (80.6)
DECEMBER	5.7	6.0	6.2	9.3	9.5	10.5	61.3 (60.8)	63.2 (63.2)	58.8 (58.8)
TOTAL	106.6	110.5	114.0	138.1	137.9	146.1	77.2 (77.1)	80.1 (80.1)	78.0 (78.0)

Note: \* All load factors are calculated on the basis of actual figures. The total yearly figure has been rounded off from the actual figure and need not necessarily equal the sum of the rounded off monthly figures.

\*\* Revenue load factors exclude non-paying passengers and are also calculated on actual figures.

Table 3 (i): Departures by air to U. K. (Scheduled Flights) 2003

2003

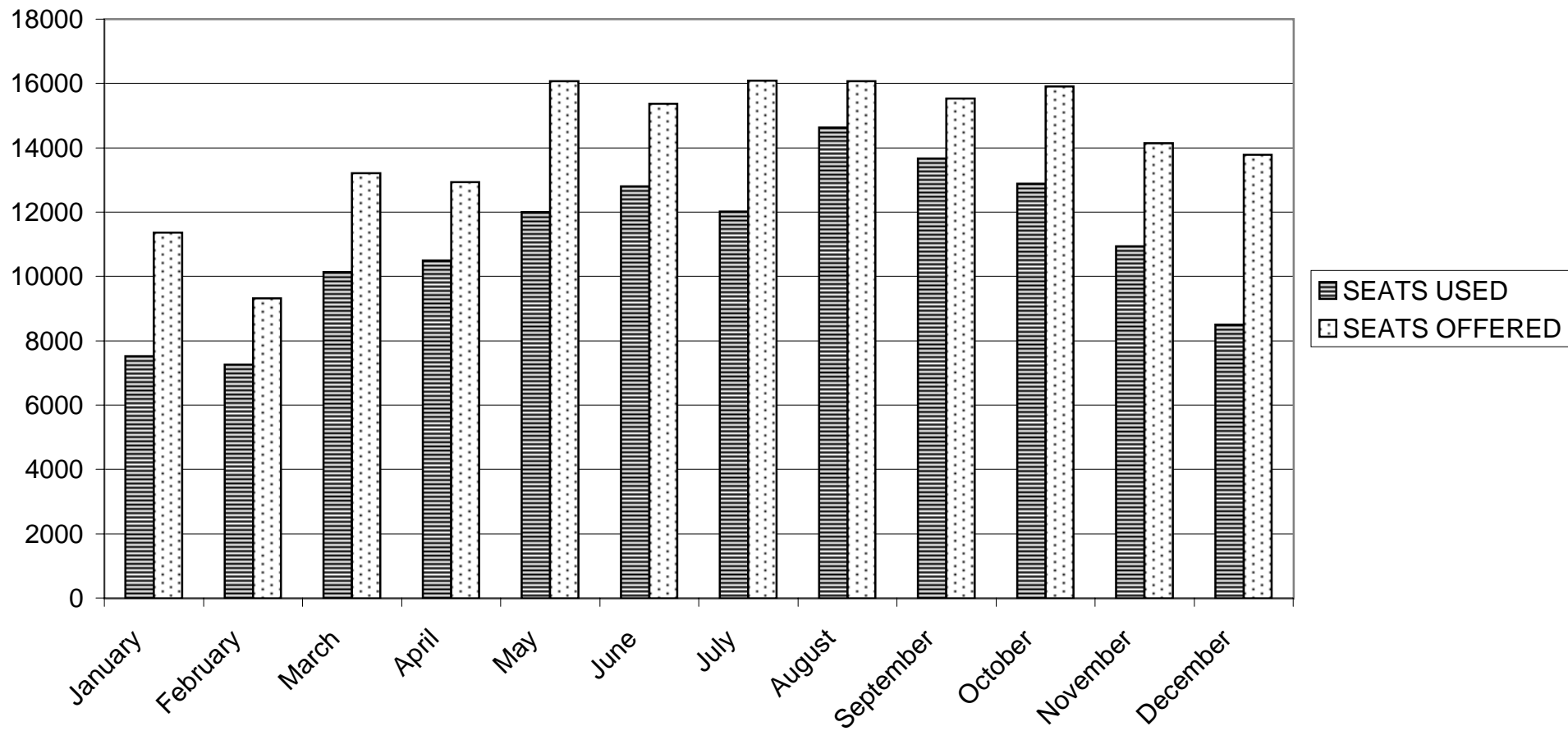
MONTH	SEATS USED (000's)	SEATS OFFERED (000's)	LOAD FACTOR %	
			(1)	(2)
January	7.5	11.4	66.2	66.2
February	7.3	9.3	77.8	77.8
March	10.1	13.2	76.6	76.6
April	10.5	12.9	81.1	81.1
May	12.0	16.1	74.7	74.6
June	12.8	15.4	83.3	83.3
July	12.0	16.1	74.7	74.6
August	14.6	16.1	91.0	91.0
September	13.7	15.5	88.1	88.1
October	12.9	15.9	81.0	80.9
November	10.9	14.1	77.4	77.4
December	8.5	13.8	61.6	61.6
TOTAL	132.9	169.8	78.2	78.2

Notes:

- (1) Load factors are calculated on the basis of actual figures and exclude visitors in transit. The total yearly figures have been rounded off from the actual figures and need not necessarily equal the sum of the rounded off monthly figures.
- (2) Revenue load factors exclude non-paying passengers from the Seats Used figures and are also calculated on the basis of actual figures.



## DEPARTURES BY AIR TO UK (SCHEDULED FLIGHTS) - 2003



## DEPARTURES BY AIR TO UK (SCHEDULED FLIGHTS) 2003

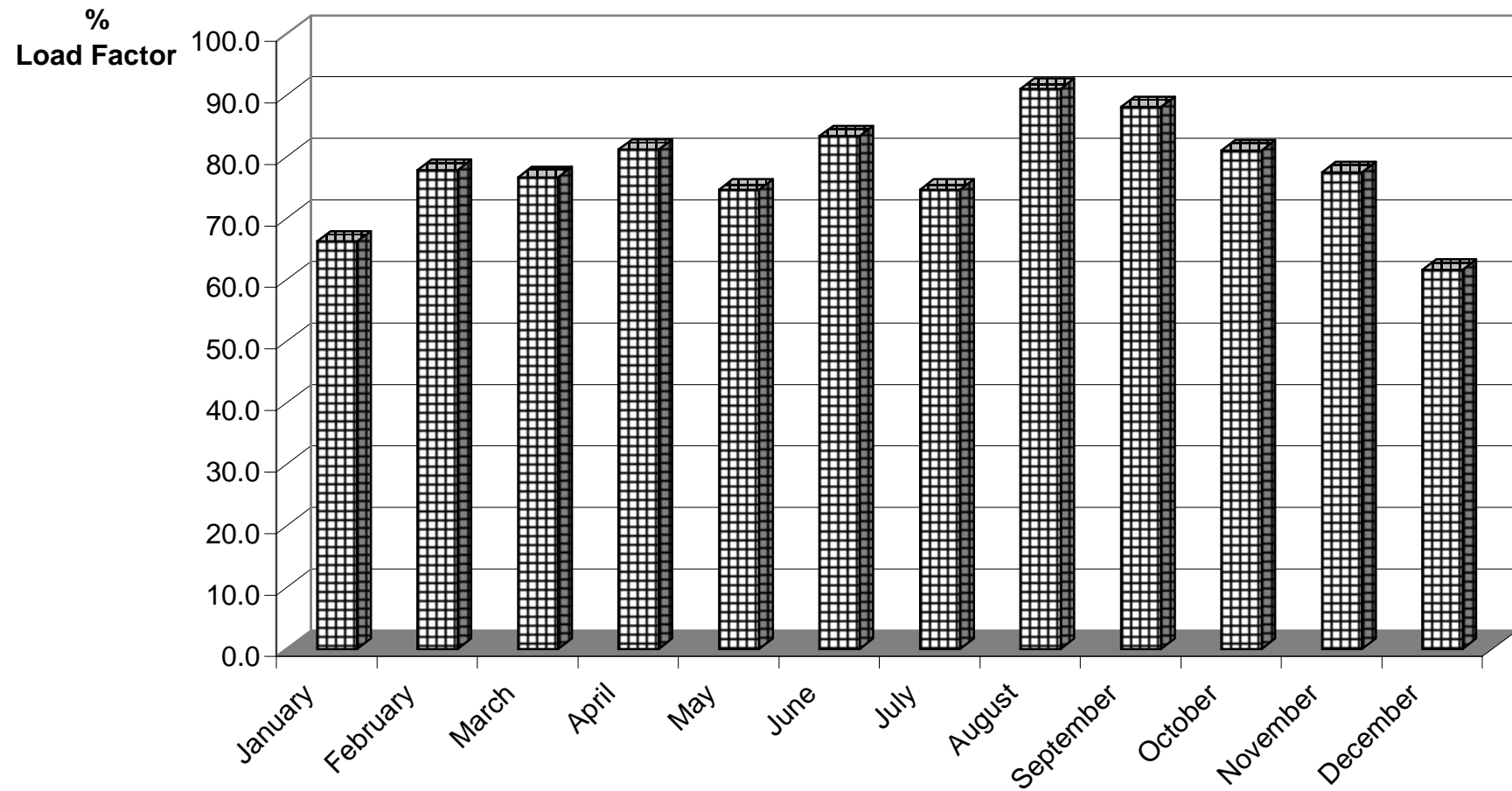


Table 4(a): Arrivals by air from U.K. (Charter Flights) 1983 -1986 \*,\*\*

MONTH	SEATS USED (000's)				SEATS OFFERED (000's)				LOAD FACTOR (%)			
	1983	1984	1985	1986	1983	1984	1985	1986	1983	1984	1985	1986
JANUARY	0.9	1.2	0.7	-	1.2	1.7	0.9	-	79.5	71.7	82.5	-
FEBRUARY	1.0	1.1	1.0	0.1	1.0	1.2	1.0	0.1	94.0	97.7	99.9	90.8
MARCH	1.2	1.8	1.5	-	1.2	1.9	1.6	-	94.7	92.7	95.0	-
APRIL	1.5	1.7	1.7	-	2.2	1.9	1.8	-	69.2	89.7	92.9	-
MAY	1.9	2.2	2.0	0.8	2.4	2.7	2.3	1.0	79.0	80.7	88.1	83.8
JUNE	1.8	2.2	1.9	0.7	2.2	2.7	2.2	0.8	82.7	82.0	88.4	84.5
JULY	2.5	3.1	2.6	0.6	2.8	3.4	2.9	0.6	87.5	91.0	90.6	94.9
AUGUST	2.3	2.6	2.0	0.7	2.5	2.7	2.1	0.7	93.4	94.1	93.9	96.8
SEPTEMBER	2.2	2.5	2.4	0.6	2.6	3.0	2.5	0.6	85.5	85.4	93.1	95.4
OCTOBER	1.7	2.2	1.5	0.6	2.7	2.9	2.2	0.9	63.8	76.6	68.1	66.1
NOVEMBER	1.5	1.4	-	-	2.0	1.6	-	-	74.9	89.3	-	-
DECEMBER	2.0	0.9	-	-	2.4	1.0	-	-	83.1	87.5	-	-
TOTAL	20.5	22.9	17.3	4.1	25.2	26.7	19.5	4.8	81.3	86.0	88.9	84.1

Notes: \* Regular charter operations commenced in April 1977. Figures exclude MoD charter flights.

\*\*The total yearly figures have been rounded off from the actual figures and need not necessarily equal the sum of the rounded off monthly figures.

Table 4(b): Arrivals by air from U.K. (Charter Flights) 1987 -1990 \*,\*\*

MONTH	SEATS USED (000's)				SEATS OFFERED (000's)				LOAD FACTOR (%)			
	1987	1988	1989	1990	1987	1988	1989	1990	1987	1988	1989	1990
JANUARY	2.3	1.6	1.2	0.8	2.5	1.7	1.7	1.0	92.2	93.4	72.4	79.5
FEBRUARY	1.5	1.5	1.4	1.0	1.6	1.6	1.8	1.0	97.1	97.5	77.9	91.7
MARCH	1.2	1.8	0.4	1.3	1.2	1.8	0.4	1.3	95.7	96.7	84.7	96.9
APRIL	1.6	1.2	0.8	0.8	1.6	1.4	1.3	1.3	97.6	80.5	61.4	58.1
MAY	0.1	0.6	-	-	0.2	0.7	-	-	61.9	90.2	-	-
JUNE	1.2	0.2	-	-	1.3	0.3	-	-	88.8	85.7	-	-
JULY	1.0	0.5	-	0.3	1.0	0.5	-	0.4	98.0	96.7	-	90.8
AUGUST	1.0	0.6	-	0.2	1.0	0.7	-	0.3	97.1	95.4	-	65.1
SEPTEMBER	1.3	0.5	0.2	0.2	1.3	0.6	0.2	0.5	98.4	74.3	77.9	42.0
OCTOBER	0.8	0.6	-	-	1.0	0.7	0.1	-	75.4	95.2	-	-
NOVEMBER	1.5	1.1	0.8	0.2	1.6	1.2	1.2	0.5	98.3	96.9	66.0	52.6
DECEMBER	1.6	1.5	0.8	-	1.7	1.7	1.0	-	96.0	86.5	80.9	-
TOTAL	15.1	11.7	5.6	4.8	16.0	12.9	7.8	6.3	94.4	90.7	71.7	75.9

Notes: \* Regular charter operations commenced in April 1977. Figures exclude MoD charter flights.

\*\*The total yearly figures have been rounded off from the actual figures and need not necessarily equal the sum of the rounded off monthly figures.

Table 4(c): Arrivals by air from U.K. (Charter Flights) 1991,1992,1998,1999 \*,\*\*

MONTH	SEATS USED (000's)				SEATS OFFERED (000's)				LOAD FACTOR (%)			
	1991	1992	1998	1999	1991	1992	1998	1999	1991	1992	1998	1999
JANUARY	-	0.1	-	-	0.2	0.1	-	0.1	5.8	96.9	-	5.6
FEBRUARY	-	-	-	-	-	-	-	-	-	-	-	-
MARCH	0.1	-	-	0.2	0.1	-	-	0.2	90.2	-	-	82.5
APRIL	-	-	-	0.1	-	-	-	0.1	-	-	-	56.9
MAY	1.5	-	-	-	1.9	-	-	-	79.3	-	-	-
JUNE	1.8	-	-	-	2.5	-	-	-	74.2	-	-	-
JULY	2.1	0.1	-	-	2.4	0.1	-	-	89.0	93.3	-	-
AUGUST	2.7	-	-	-	3.1	-	-	-	87.6	-	-	-
SEPTEMBER	1.8	-	-	-	2.3	-	-	0.2	81.2	-	-	15.6
OCTOBER	1.0	-	-	0.1	1.8	-	0.1	0.2	57.0	-	58.0	46.1
NOVEMBER	-	-	0.7	-	0.1	-	0.7	-	6.1	-	99.3	-
DECEMBER	-	0.1	0.3	0.1	-	0.1	0.4	0.2	-	100.0	79.4	73.3
TOTAL	11.0	0.3	1.1	0.5	14.4	0.3	1.2	1.0	75.2	96.9	90.1	48.9

Notes: \* Figures exclude MoD charter flights. No charter operations were recorded during 1993 - 1997.

\*\*The total yearly figures have been rounded off from the actual figures and need not necessarily equal the sum of the rounded off monthly figures.

Table 4(d): Arrivals by air from U.K. (Charter Flights) 2000 - 2002 \*,\*\*

MONTH	SEATS USED (000's)			SEATS OFFERED (000's)			LOAD FACTOR (%)		
	2000	2001	2002	2000	2001	2002	2000	2001	2002
JANUARY	0.1	-	-	0.1	-	-	82.6	100.0	100.0
FEBRUARY	-	-	-	-	-	-	-	-	100.0
MARCH	-	-	0.1	-	-	0.1	-	100.0	100.0
APRIL	0.2	0.1	0.2	0.3	0.3	0.2	65.8	42.4	100.0
MAY	-	-	0.1	-	-	0.1	-	-	100.0
JUNE	-	-	0.1	-	-	0.1	-	-	100.0
JULY	-	-	0.1	-	-	0.1	-	-	100.0
AUGUST	-	-	-	0.1	-	-	94.0	-	100.0
SEPTEMBER	0.1	-	-	0.1	-	-	56.9	-	100.0
OCTOBER	-	-	0.1	-	-	0.1	-	55.1	100.0
NOVEMBER	0.1	-	-	0.2	-	-	34.4	-	100.0
DECEMBER	-	-	0.1	-	-	0.1	67.5	-	100.0
TOTAL	0.5	0.2	0.9	0.8	0.4	0.9	62.4	50.9	100.0

Notes: \* Figures exclude MoD charter flights.

\*\*The total yearly figures have been rounded off from the actual figures and need not necessarily equal the sum of the rounded off figures.

Table 4 (e): Arrivals by Air (Charter Flights) 2003

2003

MONTH	SEATS USED (000's)	SEATS OFFERED (000's)	LOAD FACTOR (%)
January	0.2	0.3	61.6
February	0.8	1.4	60.1
March	0.2	0.5	41.2
April	0.2	0.3	55.2
May	0.2	0.3	71.8
June	0.0	0.0	0.0
July	0.0	0.0	0.0
August	0.0	0.0	0.0
September	0.2	0.3	63.2
October	0.2	0.2	87.6
November	0.0	0.0	0.0
December	0.0	0.0	0.0
TOTAL	2.0	3.3	59.9

Note: Load factors are calculated on the basis of actual figures and exclude visitors in transit. The total yearly figures have been rounded off from the actual figures and need not necessarily equal the sum of the rounded off monthly figures.

Table 5(a): Departures by air to U.K. (Charter Flights) 1983 -1986 \*,\*\*

MONTH	SEATS USED (000's)				SEATS OFFERED (000's)				LOAD FACTOR (%) **			
	1983	1984	1985	1986	1983	1984	1985	1986	1983	1984	1985	1986
JANUARY	1.0	1.5	0.7	-	1.2	1.7	0.9	-	88.5	89.0	85.0	-
FEBRUARY	0.9	1.0	0.9	0.1	1.0	1.2	1.0	0.1	83.7	86.3	89.7	90.8
MARCH	1.2	1.8	1.5	-	1.2	1.9	1.6	-	97.0	93.0	96.0	-
APRIL	1.5	1.8	1.7	-	2.2	1.9	1.8	-	69.2	94.5	96.0	-
MAY	1.6	1.7	1.7	0.6	2.4	2.7	2.3	1.0	66.7	63.7	72.6	61.8
JUNE	1.9	2.2	1.9	0.7	2.2	2.7	2.2	0.8	83.7	83.0	89.8	85.6
JULY	2.3	3.0	2.5	0.5	2.8	3.4	2.8	0.6	83.2	86.5	87.9	87.7
AUGUST	2.3	2.7	2.0	0.7	2.5	2.7	2.1	0.7	93.2	98.3	98.0	97.8
SEPTEMBER	2.5	2.7	2.5	0.6	2.6	3.0	2.5	0.6	97.5	90.7	97.5	97.8
OCTOBER	2.3	2.7	2.2	0.6	2.7	2.9	2.2	0.9	83.1	95.5	98.1	74.0
NOVEMBER	1.5	1.5	-	-	2.0	1.6	-	-	74.9	93.3	-	-
DECEMBER	1.7	0.8	-	-	2.4	1.0	-	-	72.2	80.1	-	-
TOTAL	20.7	23.4	17.6	4.0	25.2	26.7	19.4	4.9	82.2	87.8	91.2	81.5

Notes: \* Regular charter operations commenced in April 1977. Figures exclude MoD charter flights.

\*\*The total yearly figures have been rounded off from the actual figures and need not necessarily equal the sum of the rounded off monthly figures.



Table 5(b): Departures by air to U.K. (Charter Flights) 1987 -1990 \*

MONTH	SEATS USED (000's)				SEATS OFFERED (000's)				LOAD FACTOR (%) **			
	1987	1988	1989	1990	1987	1988	1989	1990	1987	1988	1989	1990
JANUARY	2.2	1.6	1.3	0.8	2.5	1.7	1.7	1.0	89.0	94.2	78.3	77.3
FEBRUARY	1.5	1.5	1.4	0.9	1.6	1.6	1.8	1.0	95.0	94.4	76.2	83.6
MARCH	1.0	1.7	0.3	1.2	1.2	1.8	0.4	1.3	83.1	93.9	79.1	93.2
APRIL	0.8	1.4	1.2	1.0	1.6	1.4	1.3	1.3	51.7	96.0	92.0	77.9
MAY	-	0.6	-	-	0.2	0.7	-	-	32.3	91.2	-	-
JUNE	1.2	0.2	-	-	1.3	0.3	-	-	95.1	90.4	-	-
JULY	0.9	0.4	-	0.2	1.0	0.5	-	0.4	86.0	80.6	-	60.8
AUGUST	1.0	0.6	-	0.2	1.0	0.7	-	0.3	93.9	96.0	-	62.4
SEPTEMBER	1.3	0.6	0.2	0.2	1.3	0.6	0.3	0.5	98.6	91.8	77.1	45.1
OCTOBER	1.0	0.6	0.1	-	1.0	0.7	0.1	-	95.5	91.0	67.2	-
NOVEMBER	1.6	0.9	0.6	0.2	1.3	1.2	1.2	0.5	81.5	78.6	47.7	53.2
DECEMBER	1.6	1.3	0.7	-	1.7	1.7	1.0	-	95.5	79.5	71.7	-
TOTAL	14.1	11.4	5.8	4.6	15.8	12.9	7.8	6.3	89.8	88.4	74.5	75.9

Notes: \* Regular charter operations commenced in April 1977. Figures exclude MoD charter flights.

\*\*The total yearly figures have been rounded off from the actual figures and need not necessarily equal the sum of the rounded off monthly figures.

Table 5(c): Departures by air to U.K. (Charter Flights) 1991,1992,1998, 1999 \*

MONTH	SEATS USED (000's)				SEATS OFFERED (000's)				LOAD FACTOR (%) **			
	1991	1992	1998	1999	1991	1992	1998	1999	1991	1992	1998	1999
JANUARY	0.1	0.1	-	0.1	0.2	0.1	-	0.1	64.6	93.1	-	81.9
FEBRUARY	-	-	-	-	-	-	-	-	-	-	-	-
MARCH	0.1	-	-	0.1	0.1	-	-	0.2	84.8	-	-	54.1
APRIL	-	-	-	0.1	-	-	-	0.1	-	-	-	100.0
MAY	0.9	-	-	-	1.9	-	-	-	47.6	-	-	-
JUNE	1.8	-	-	-	2.5	-	-	-	74.2	-	-	-
JULY	1.8	0.1	-	-	2.4	0.1	-	-	74.9	93.3	-	-
AUGUST	2.9	-	-	-	3.0	-	-	-	94.2	-	-	-
SEPTEMBER	2.0	-	-	-	2.3	-	-	0.2	87.6	-	-	15.0
OCTOBER	1.6	-	-	0.1	2.0	-	0.1	0.2	78.6	-	46.0	54.4
NOVEMBER	0.2	-	0.6	-	0.3	-	0.7	-	88.1	-	88.1	-
DECEMBER	-	0.3	0.3	-	-	0.2	0.4	0.2	-	75.4	57.3	-
TOTAL	11.4	0.5	0.9	0.5	14.7	0.4	1.2	1.0	78.2	84.3	74.8	48.8

Notes: \* Figures exclude MoD charter flights. No charter operations were recorded during 1993 - 1997.

\*\*The total yearly figures have been rounded off from the actual figures and need not necessarily equal the sum of the rounded off monthly figures.

Table 5(d): Departures by air to U.K. (Charter Flights) 2000 - 2002 \*,\*\*

MONTH	SEATS USED (000's)			SEATS OFFERED (000's)			LOAD FACTOR (%) **		
	2000	2001	2002	2000	2001	2002	2000	2001	2002
JANUARY	0.1	-	-	0.1	-	-	82.6	100.0	100.0
FEBRUARY	-	-	-	-	-	-	-	-	100.0
MARCH	-	-	0.1	-	-	0.1	-	100.0	100.0
APRIL	0.2	0.1	0.2	0.3	0.3	0.2	65.8	42.4	100.0
MAY	-	-	0.1	-	-	0.1	-	-	100.0
JUNE	-	-	0.1	-	-	0.1	-	-	100.0
JULY	-	-	0.1	-	-	0.1	-	-	100.0
AUGUST	-	-	-	0.1	-	-	94.0	-	100.0
SEPTEMBER	0.1	-	-	0.1	-	-	56.9	-	100.0
OCTOBER	-	-	0.1	-	-	0.1	-	55.1	100.0
NOVEMBER	0.1	-	-	0.2	-	-	34.4	-	100.0
DECEMBER	-	-	0.1	-	-	0.1	67.5	-	53.8
TOTAL	0.5	0.2	0.9	0.8	0.4	0.9	62.4	50.9	94.6

Notes: \* No charter operations were recorded during 1993 - 1997. Figures exclude MoD charter flights.

\*\*The total yearly figures have been rounded off from the actual figures and need not necessarily equal the sum of the rounded off monthly figures.

Table 5 (e): Departures by Air (Charter Flights) 2003

2003

MONTH	SEATS USED (000's)	SEATS OFFERED (000's)	LOAD FACTOR (%)
January	0.1	0.3	43.8
February	0.9	1.4	64.5
March	0.2	0.5	42.0
April	0.2	0.3	62.8
May	0.2	0.3	63.1
June	0.0	0.0	0.0
July	0.0	0.0	0.0
August	0.0	0.0	0.0
September	0.1	0.3	41.9
October	0.2	0.2	85.4
November	0.0	0.0	0.0
December	0.0	0.0	0.0
TOTAL	1.9	3.3	58.2

Note: Load factors are calculated on the basis of actual figures and exclude visitors in transit. The total yearly figures have been rounded off from the actual figures and need not necessarily equal the sum of the rounded off monthly figures.

Table 6(a): Arrivals by air from Morocco (Scheduled Flights), 1993-1996

MONTH	SEATS USED (000's)				SEATS OFFERED (000's)				LOAD FACTOR (%)			
	1993	1994	1995	1996	1993	1994	1995	1996	1993	1994	1995	1996
JANUARY	0.6	0.6	0.4	1.6	2.5	2.6	3.2	4.1	23.7	23.1	12.9	40.0
FEBRUARY	0.5	0.5	0.3	0.6	2.2	2.6	2.8	3.1	22.2	19.2	9.9	19.2
MARCH	0.6	0.5	0.4	1.0	2.6	2.7	2.9	3.0	21.4	17.5	14.0	33.3
APRIL	0.4	0.5	0.5	0.6	2.7	2.2	3.2	3.0	15.8	22.8	16.7	21.5
MAY	0.4	0.4	0.5	0.4	2.9	2.5	3.5	2.7	15.6	14.9	13.0	15.6
JUNE	0.3	0.3	0.4	0.5	2.3	2.2	3.5	2.8	14.9	13.0	12.3	19.0
JULY	0.5	0.4	0.4	0.8	2.4	2.0	2.9	2.8	22.1	20.3	13.9	27.1
AUGUST	0.6	0.5	0.6	0.8	1.7	1.5	2.9	2.2	38.1	30.3	22.1	34.8
SEPTEMBER	0.5	0.4	0.4	0.5	1.8	1.6	2.9	2.5	28.7	21.7	13.8	20.1
OCTOBER	0.7	0.4	0.4	0.5	2.2	2.1	3.0	2.8	32.8	18.7	12.4	16.9
NOVEMBER	0.5	0.4	0.7	0.6	2.5	3.2	3.2	2.8	21.0	11.4	20.8	22.3
DECEMBER	0.5	0.3	0.5	0.6	2.5	3.3	3.1	2.3	18.7	10.4	16.5	23.5
TOTAL	6.2	5.0	5.5	8.5	28.2	28.5	37.0	34.1	22.1	17.7	14.9	24.9

Table 6(b): Arrivals by air from Morocco (Scheduled Flights), 1997 -2000

MONTH	SEATS USED (000's)				SEATS OFFERED (000's)				LOAD FACTOR (%)			
	1997	1998	1999	2000	1997	1998	1999	2000	1997	1998	1999	2000
JANUARY	0.5	0.3	0.0	0.0	3.3	2.6	0.9	0.5	13.7	12.0	4.5	7.7
FEBRUARY	0.4	0.4	0.1	0.1	2.5	2.4	0.8	0.5	16.4	17.2	6.9	14.9
MARCH	0.5	0.4	0.1	0.1	2.9	2.2	0.5	0.5	17.4	19.4	26.9	16.0
APRIL	0.5	0.3	0.0	0.1	2.1	1.3	0.0	0.4	22.8	24.9	0.0	15.3
MAY	0.5	0.3	0.0	0.1	2.4	1.2	0.0	0.5	21.4	22.2	0.0	14.8
JUNE	0.4	0.2	0.0	0.1	2.3	1.2	0.0	0.5	15.7	17.0	0.0	15.4
JULY	0.4	0.2	0.0	0.0	2.6	1.1	0.0	0.2	13.9	21.6	0.0	15.1
AUGUST	0.5	0.2	0.0	0.0	1.8	0.9	0.0	0.0	28.1	25.2	0.0	0.0
SEPTEMBER	0.3	0.2	0.0	0.0	2.1	0.9	0.0	0.0	16.0	22.0	0.0	0.0
OCTOBER	0.4	0.3	0.0	0.0	2.4	1.5	0.0	0.0	18.6	16.8	0.0	0.0
NOVEMBER	0.5	0.1	0.1	0.0	2.6	0.9	0.4	0.0	21.2	8.2	18.9	0.0
DECEMBER	0.4	0.2	0.0	0.0	2.7	1.0	0.5	0.0	15.5	22.3	9.5	0.0
TOTAL	5.3	3.2	0.4	0.4	30.0	17.2	3.1	3.0	18.0	18.4	11.5	14.0

Note: No flights were recorded arriving from Morocco after 2000. Load factors are calculated on the basis of actual figures and exclude visitors in transit.

Table 7(a): Departures by air to Morocco (Scheduled Flights), 1993 -1996

MONTH	SEATS USED (000's)				SEATS OFFERED (000's)				LOAD FACTOR (%) *			
	1993	1994	1995	1996	1993	1994	1995	1996	1993	1994	1995	1996
JANUARY	0.7	0.7	0.4	0.7	2.6	2.7	3.4	3.2	26.5	25.5	11.3 (10.9)	21.5 (21.3)
FEBRUARY	0.7	0.4	0.3	0.8	2.3	2.5	2.8	2.7	32.0	17.9	9.6 (9.5)	30.0 (30.0)
MARCH	0.6	0.7	0.5	0.9	2.6	2.7	3.2	3.0	22.5	25.7	16.5 (16.3)	30.5 (30.4)
APRIL	0.6	0.5	0.5	0.6	3.0	2.4	3.0	2.8	21.5	19.7	17.0 (17.0)	20.6 (20.6)
MAY	0.6	0.4	0.7	0.6	2.9	2.6	3.8	3.0	22.7	14.7	18.2 (17.7)	21.1 (21.1)
JUNE	0.6	0.3	0.6	0.6	2.4	2.3	3.6	3.0	23.7	12.7	16.8 (16.2)	20.7 (20.4)
JULY	0.8	0.4	0.4	0.8	1.9	1.6	2.7	2.8	39.2	26.6	13.6 (13.5)	28.7 (28.5)
AUGUST	0.9	0.6	0.5	0.7	1.9	1.8	2.7	2.4	46.0	30.8	18.1 (17.9)	28.9 (28.9)
SEPTEMBER	0.7	0.3	0.7	0.6	2.0	1.8	2.8	2.6	37.0	18.9	24.9 (24.1)	24.7 (24.5)
OCTOBER	0.9	0.5	0.6	0.6	2.3	2.2	3.2	3.0	39.3	21.5	18.2 (17.3)	19.4 (19.1)
NOVEMBER	0.6	0.5	0.6	0.9	2.7	3.4	3.3	2.9	21.8	13.5	17.6 (17.2)	31.4 (31.4)
DECEMBER	0.6	0.4	0.6	0.6	2.5	3.3	2.9	3.0	21.8	19.3	19.0 (18.7)	20.7 (20.7)
TOTAL	8.3	5.7	6.2	8.4	29.1	29.3	37.4	34.4	28.4	19.3	16.7 (16.3)	24.7 (24.6)

Note: \* Figures show both passenger and revenue load factors. The latter is derived by excluding non-paying passengers from the "seats used" column. All load factors are calculated on the basis of actual figures.

Table 7(b): Departures by air to Morocco (Scheduled Flights), 1997 -2000

MONTH	SEATS USED (000's)				SEATS OFFERED (000's)				LOAD FACTOR (%) *			
	1997	1998	1999	2000	1997	1998	1999	2000	1997	1998	1999	2000
JANUARY	0.4	0.2	0.1	0.1	3.1	3.1	0.8	0.5	13.0 (13.0)	10.2 (9.9)	8.3 (8.0)	13.4 (13.4)
FEBRUARY	0.4	0.5	0.1	0.1	2.4	2.4	0.8	0.5	17.7 (17.1)	22.0 (21.6)	15.3 (15.1)	18.4 (18.4)
MARCH	0.4	0.3	0.1	0.1	2.9	2.9	0.5	0.5	14.6 (13.6)	14.5 (14.0)	11.2 (10.6)	17.4 (17.4)
APRIL	0.4	0.3	0.0	0.1	2.1	2.1	0.0	0.4	20.1 (19.4)	27.4 (27.0)	0.0 (0.0)	17.1 (17.1)
MAY	0.5	0.2	0.0	0.1	2.7	2.7	0.0	0.5	16.9 (16.3)	16.0 (15.9)	0.0 (0.0)	10.5 (10.5)
JUNE	0.3	0.2	0.0	0.1	2.3	2.3	0.0	0.5	14.0 (13.3)	11.9 (11.8)	0.0 (0.0)	14.4 (14.4)
JULY	0.4	0.2	0.0	0.0	2.4	2.4	0.0	0.2	18.5 (17.9)	12.9 (12.7)	0.0 (0.0)	16.4 (16.4)
AUGUST	0.5	0.2	0.0	0.0	2.2	2.2	0.0	0.0	24.1 (23.6)	15.3 (15.2)	0.0 (0.0)	0.0 (0.0)
SEPTEMBER	0.4	0.2	0.0	0.0	2.5	2.5	0.0	0.0	16.6 (16.1)	18.2 (18.2)	0.0 (0.0)	0.0 (0.0)
OCTOBER	0.4	0.2	0.0	0.0	2.1	2.1	0.0	0.0	18.0 (17.4)	12.4 (12.3)	0.0 (0.0)	0.0 (0.0)
NOVEMBER	0.3	0.1	0.1	0.0	2.3	2.3	0.4	0.0	13.6 (13.2)	9.5 (9.3)	13.6 (13.6)	0.0 (0.0)
DECEMBER	0.4	0.2	0.0	0.0	2.5	2.5	0.5	0.0	14.8 (14.4)	15.8 (15.8)	8.0 (8.0)	0.0 (0.0)
TOTAL	4.9	4.9	0.3	0.5	29.5	29.5	2.9	3.0	16.6 (16.2)	15.2 (15.0)	11.4 (11.2)	15.1 (15.1)

Note: \* Figures show both passenger and revenue load factors. The latter is derived by excluding non-paying passengers from the "seats used" column. All load factors are calculated on the basis of actual figures.

\*\* No flights departing to Morocco were recorded after 2000.



Table 8: Commercial Freight, Set Down/Picked Up, Gibraltar 1976 -2003

(000's kgs)

YEAR	SET DOWN	PICKED UP
1976	1721	125
1977	1089	87
1978	927	62
1979	896	61
1980	447	38
1981	318	64
1982	481	44
1983	381	38
1984	333	36
1985	419	40
1986	523	59
1987	499	67
1988	599	40
1989	648	45
1990	797	95
1991	596	54
1992	476	64
1993	597	74
1994	518	49
1995	504	52
1996	406	58
1997	330	57
1998	406	69
1999	433	77
2000	419	74
2001	306	71
2002	289	60
2003	325	66

Note: Relates to freight from/to all destinations.

# COMMERCIAL FREIGHT 1982 - 2003

