



**GOVERNMENT OF GIBRALTAR**

**AIR TRAFFIC  
SURVEY  
2006**

**STATISTICS OFFICE**



GOVERNMENT OF GIBRALTAR

# AIR TRAFFIC SURVEY 2006

STATISTICS OFFICE

Government of Gibraltar  
Statistics Office

Statistics Online

Copies of the Air Traffic Survey can be obtained, free of charge from the Statistics Office and are also available electronically on the Gibraltar Government Website [www.gibraltar.gov.gi](http://www.gibraltar.gov.gi).

Historic data can be downloaded from previous copies of the report available on-line.

Comments and requests for general information should be addressed to:

Statistics Office  
99 New Harbours  
The New Harbours

Or

E-mail: [statistics@gibraltar.gov.gi](mailto:statistics@gibraltar.gov.gi)

Tel: +350 75515/ +350 75490

Fax: +350 51160

- C O N T E N T S -

	<u>PAGE</u>
Preface	1
Definitions	2
Tables and Charts	3 - 36

LIST OF TABLES

Table 1	Arrivals/Departures by Air from/to U.K., 1982 - 2006	3
Chart	Arrivals by Air from U.K., 1982 - 2006	4
Table 2(a)	Arrivals by Air from U.K. (Scheduled Flights), 1982 - 1985	5
Table 2(b)	Arrivals by Air from U.K. (Scheduled Flights), 1986 - 1989	6
Table 2(c)	Arrivals by Air from U.K. (Scheduled Flights), 1990 - 1993	7
Table 2(d)	Arrivals by Air from U.K. (Scheduled Flights), 1994 - 1997	8
Table 2(e)	Arrivals by Air from U.K. (Scheduled Flights), 1998 - 2001	9
Table 2(f)	Arrivals by Air from U.K. (Scheduled Flights), 2002 - 2005	10
Table 2(g)	Arrivals by Air from U.K. (Scheduled Flights), 2006	11
Chart	Arrivals by Air from U.K. (Scheduled Flights), 2006	12
Chart	Arrivals by Air from U.K. (Scheduled Flights), Load Factor, 2006	13
Table 3(a)	Departures by Air to U.K. (Scheduled Flights), 1982 - 1984	14
Table 3(b)	Departures by Air to U.K. (Scheduled Flights), 1985 - 1987	15
Table 3(c)	Departures by Air to U.K. (Scheduled Flights), 1988 - 1990	16
Table 3(d)	Departures by Air to U.K. (Scheduled Flights), 1991 - 1993	17
Table 3(e)	Departures by Air to U.K. (Scheduled Flights), 1994 - 1996	18
Table 3(f)	Departures by Air to U.K. (Scheduled Flights), 1997 - 1999	19
Table 3(g)	Departures by Air to U.K. (Scheduled Flights), 2000 - 2002	20
Table 3(h)	Departures by Air to U.K. (Scheduled Flights), 2003 - 2005	21
Table 3(i)	Departures by Air to U.K. (Scheduled Flights), 2006	22
Chart	Departures by Air to U.K. (Scheduled Flights), 2006	23
Chart	Departures by Air to U.K. (Scheduled Flights), Load Factor, 2006	24
Table 4(a)	Arrivals by Air from U.K. (Charter Flights), 1986 - 1989	25
Table 4(b)	Arrivals by Air from U.K. (Charter Flights), 1990 - 1992 & 1998	26
Table 4(c)	Arrivals by Air from U.K. (Charter Flights), 1999 - 2002	27
Table 4(d)	Arrivals by Air from U.K. (Charter Flights), 2003 - 2005	28
Table 4(e)	Arrivals by Air (Charter Flights), 2006	29
Table 5(a)	Departures by Air to U.K. (Charter Flights), 1986 - 1989	30
Table 5(b)	Departures by Air to U.K. (Charter Flights), 1990 - 1992 & 1998	31
Table 5(c)	Departures by Air to U.K. (Charter Flights), 1999 - 2002	32
Table 5(d)	Departures by Air to U.K. (Charter Flights), 2003 - 2005	33
Table 5(e)	Departures by Air (Charter Flights), 2006	34
Table 6	Commercial Freight, Set Down/Picked Up, Gibraltar, 1982 - 2006	35
Chart	Commercial Freight, 1982 - 2006	36

## A. PREFACE

The Statistics (Air Traffic Survey) Order 1971 requires that a report and summary of the findings of the Air Traffic Survey be laid before the Gibraltar Parliament. This is the thirty-first report and contains a summary of statistics collected for the years 1982 to 2006.

The report contains statistical data on air traffic operations between Gibraltar and other destinations for both scheduled and charter airlines. Direct flights between Gibraltar and Spain commenced on 16 December 2006. The report also includes some general data on commercial freight.

I must express my thanks to the Airlines and to Terminal Management Ltd for their continued co-operation in the conduct of this Survey.

GOVERNMENT STATISTICIAN

APRIL 2007

## B. DEFINITIONS

- (a) Passenger Load Factor:  $\frac{\text{All seats used}}{\text{All seats offered (less in-transits)}} \times 100$
- (b) Revenue Load Factor:  $\frac{\text{All seats used by "paying" passengers}}{\text{All seats offered (less in-transits)}} \times 100$
- (c) Scheduled Services: are those performed according to a published timetable including those supplementary thereto, and available for use by members of the public.
- (d) Charter Services: includes all air passengers transport flights, other than scheduled services and Ministry of Defence Charters.

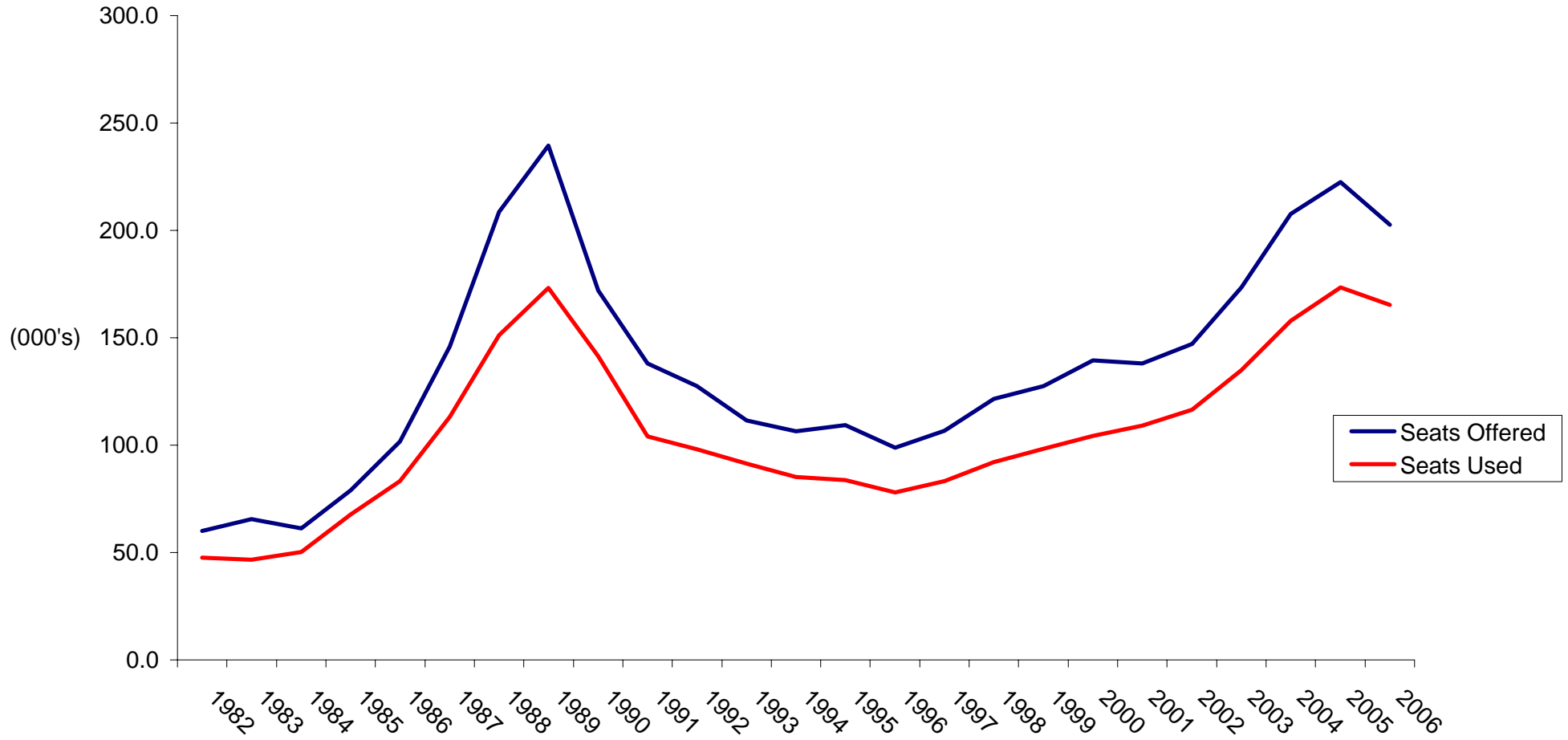
**Table 1: Arrivals/Departures by Air from/to U.K., 1982 - 2006**

YEAR	ARRIVALS (000's)						DEPARTURES (000's)					
	TOTAL		SCHEDULED		CHARTER		TOTAL		SCHEDULED		CHARTER	
	Seats Offered	Seats Used	Seats Offered	Seats Used	Seats Offered	Seats Used	Seats Offered	Seats Used	Seats Offered	Seats Used	Seats Offered	Seats Used
1982	60.0	47.5	35.6	27.0	24.4	20.5	60.0	47.6	35.6	26.7	24.3	20.9
1983	65.6	46.7	40.4	26.3	25.2	20.5	65.6	47.5	40.4	26.8	25.2	20.7
1984	61.3	50.3	34.6	27.4	26.7	22.9	61.2	51.0	34.6	27.6	26.7	23.4
1985	79.0	67.6	59.5	50.3	19.5	17.3	79.0	67.7	59.7	50.0	19.3	17.7
1986	101.7	83.2	96.9	79.1	4.8	4.1	101.8	84.1	96.9	80.1	4.9	4.0
1987	145.9	113.2	129.8	98.1	16.1	15.1	145.4	114.8	129.3	100.9	16.1	13.9
1988	208.7	151.2	196.0	139.6	12.7	11.6	208.3	156.1	195.6	144.6	12.7	11.5
1989	239.4	173.2	231.6	167.6	7.8	5.6	237.8	179.8	230.0	174.0	7.8	5.8
1990	172.0	141.5	165.8	136.8	6.2	4.7	175.1	148.5	168.9	143.8	6.2	4.7
1991	138.1	104.0	126.0	94.9	12.1	9.1	140.2	106.3	127.8	96.6	12.4	9.7
1992	127.4	98.1	127.0	97.7	0.4	0.4	128.2	101.0	127.7	100.5	0.5	0.4
1993	111.5	91.3	111.4	91.2	0.1	0.1	112.2	93.3	112.2	93.3	0.0	0.0
1994	106.4	85.2	106.4	85.2	0.0	0.0	107.1	86.9	207.2	86.9	0.0	0.0
1995	109.4	83.8	109.4	83.8	0.0	0.0	109.5	85.3	109.5	85.3	0.0	0.0
1996	98.7	78.1	98.7	78.1	0.0	0.0	98.1	78.2	98.1	78.2	0.0	0.0
1997	106.6	83.2	106.6	83.2	0.0	0.0	104.4	81.5	104.4	81.5	0.0	0.0
1998	121.5	92.0	120.4	91.0	1.2	1.1	120.2	91.0	119.0	90.1	1.2	0.9
1999	127.5	98.3	126.5	97.8	1.0	0.5	127.5	97.9	126.5	97.4	1.0	0.5
2000	139.4	104.3	138.6	103.7	0.8	0.5	138.9	107.1	138.1	106.6	0.8	0.5
2001	138.0	109.0	137.7	108.8	0.3	0.2	138.2	110.6	137.9	110.5	0.4	0.2
2002	147.2	116.6	146.3	115.7	0.9	0.9	147.0	114.8	146.1	114.0	0.9	0.9
2003	173.5	135.0	170.3	133.0	3.3	2.0	173.1	134.8	169.8	132.9	3.3	1.9
2004	207.6	157.9	206.4	157.0	1.2	0.9	207.6	158.3	206.4	157.3	1.2	0.9
2005	222.4	173.5	221.6	172.7	0.8	0.8	222.2	174.4	221.4	173.7	0.8	0.7
2006	202.7	165.2	202.0	164.6	0.7	0.6	202.6	166.0	201.9	165.4	0.7	0.6

**Notes:** (i) Charter flights as from 1998 include all destinations. The yearly totals have been rounded off from the actual figure and need not necessarily equal the sum of the rounded off sub-totals.

(ii) Flights to and from Madrid commenced on 16th December 2006.

**ARRIVALS BY AIR FROM U.K., 1982 - 2006**





**Table 2(a): Arrivals by Air from U.K. (Scheduled Flights), 1982 - 1985**

<u>MONTH</u>	<u>(000's)</u>				<u>(000's)</u>				<u>% (i)</u>			
	<u>SEATS USED</u>				<u>SEATS OFFERED</u>				<u>LOAD FACTOR</u>			
	<u>1982</u>	<u>1983</u>	<u>1984</u>	<u>1985</u>	<u>1982</u>	<u>1983</u>	<u>1984</u>	<u>1985</u>	<u>1982</u>	<u>1983</u>	<u>1984</u>	<u>1985</u>
JANUARY	1.7	1.6	1.5	2.1	2.2	2.9	2.6	2.6	78.2	55.0	59.8	79.1
FEBRUARY	1.8	1.5	1.7	2.0	2.2	2.6	2.1	2.2	77.5	59.0	81.8	90.9
MARCH	2.0	2.1	2.1	3.0	2.1	3.0	2.4	3.2	95.9	70.3	87.2	97.0
APRIL	2.8	2.3	2.5	3.9	3.2	3.9	3.1	4.6	86.7	59.2	79.2	84.8
MAY	2.3	2.2	2.3	3.9	3.2	4.0	3.2	4.4	72.4	55.4	70.1	89.5
JUNE	2.3	2.4	2.2	4.3	3.3	3.9	3.3	5.0	70.9	60.3	68.9	86.4
JULY	2.7	3.0	2.9	5.4	3.5	4.0	3.4	5.7	77.8	74.4	86.1	95.2
AUGUST	2.8	2.8	2.8	5.8	3.3	4.0	3.2	6.5	82.4	70.5	86.7	89.2
SEPTEMBER	2.4	2.7	2.5	4.7	3.4	3.9	3.2	5.8	70.8	68.0	76.4	79.8
OCTOBER	2.3	2.3	2.6	5.1	3.4	3.6	3.2	5.8	69.0	63.0	79.3	86.7
NOVEMBER	1.9	1.6	2.0	4.6	2.9	2.2	2.4	6.3	65.2	71.1	85.0	73.4
DECEMBER	2.0	1.8	2.3	5.5	2.9	2.4	2.5	7.4	70.5	77.1	90.1	74.1
<b>TOTAL</b>	<b>27.0</b>	<b>26.3</b>	<b>27.4</b>	<b>50.3</b>	<b>35.6</b>	<b>40.4</b>	<b>34.6</b>	<b>59.5</b>	<b>75.9</b>	<b>65.0</b>	<b>79.0</b>	<b>84.5</b>

Note: (i) All load factors are calculated on the basis of actual figures. The total yearly figure has been rounded off from the actual figure and need not necessarily equal the sum of the rounded off monthly figures.

**Table 2(b): Arrivals by Air from U.K. (Scheduled Flights), 1986 - 1989**

<u>MONTH</u>	<u>(000's)</u>				<u>(000's)</u>				<u>% (i)</u>			
	<u>SEATS USED</u>				<u>SEATS OFFERED</u>				<u>LOAD FACTOR</u>			
	<u>1986</u>	<u>1987</u>	<u>1988</u>	<u>1989</u>	<u>1986</u>	<u>1987</u>	<u>1988</u>	<u>1989</u>	<u>1986</u>	<u>1987</u>	<u>1988</u>	<u>1989</u>
JANUARY	4.1	4.7	7.0	9.7	7.0	7.8	12.7	18.0	58.6	60.3	55.2	53.9
FEBRUARY	4.4	5.0	8.4	10.4	5.9	6.6	11.3	14.4	75.2	76.2	74.9	72.4
MARCH	6.5	7.0	10.6	13.6	7.1	8.6	13.1	17.8	92.2	81.9	81.2	76.3
APRIL	5.6	7.6	10.4	11.9	7.2	8.4	14.2	17.6	77.4	90.0	73.7	67.7
MAY	7.4	9.0	13.1	14.9	8.7	11.4	17.2	19.3	84.8	79.3	76.3	77.2
JUNE	7.1	8.1	11.9	14.7	8.5	12.0	16.2	19.8	83.2	67.7	73.6	74.3
JULY	8.3	10.6	15.5	20.3	9.0	12.4	19.5	24.8	92.2	85.3	79.7	81.8
AUGUST	8.7	10.7	14.6	18.5	9.8	12.4	18.1	24.4	88.2	85.9	80.7	75.8
SEPTEMBER	7.6	8.7	14.0	16.5	8.9	11.6	18.0	22.2	85.0	74.8	77.9	74.3
OCTOBER	7.8	9.8	14.1	16.3	9.1	12.4	18.4	22.5	85.4	79.4	76.7	72.1
NOVEMBER	5.1	7.7	8.9	9.9	7.4	13.0	14.7	15.5	69.4	59.4	60.2	63.7
DECEMBER	6.5	8.7	10.9	10.9	8.2	12.9	16.3	15.3	78.6	67.4	67.3	71.5
<b>TOTAL</b>	<b>79.1</b>	<b>97.6</b>	<b>139.4</b>	<b>167.6</b>	<b>96.9</b>	<b>129.5</b>	<b>189.7</b>	<b>231.6</b>	<b>81.6</b>	<b>75.2</b>	<b>73.5</b>	<b>72.4</b>

Note: (i) All load factors are calculated on the basis of actual figures. The total yearly figure has been rounded off from the actual figure and need not necessarily equal the sum of the rounded off monthly figures.

**Table 2(c): Arrivals by Air from U.K. (Scheduled Flights), 1990 - 1993**

<u>MONTH</u>	<u>(000's)</u>				<u>(000's)</u>				<u>% (i)</u>			
	<u>1990</u>	<u>1991</u>	<u>1992</u>	<u>1993</u>	<u>1990</u>	<u>1991</u>	<u>1992</u>	<u>1993</u>	<u>1990</u>	<u>1991</u>	<u>1992</u>	<u>1993</u>
JANUARY	10.0	7.3	6.2	5.7	15.1	12.2	10.0	7.4	66.3	59.3	61.2	77.9
FEBRUARY	10.6	6.8	6.2	5.5	13.1	10.4	8.7	6.1	81.1	65.9	71.0	90.7
MARCH	12.9	7.4	7.7	7.1	14.8	9.2	9.2	7.5	87.1	81.3	83.0	95.9
APRIL	11.6	6.7	9.1	8.2	14.2	7.9	12.8	10.2	82.2	84.1	71.1	79.9
MAY	12.2	7.5	9.3	8.6	13.8	8.3	12.5	11.1	88.1	90.7	74.1	76.7
JUNE	12.1	7.9	9.6	8.6	13.7	9.5	12.0	11.1	88.3	83.5	79.8	77.7
JULY	13.9	10.8	11.5	10.1	14.6	12.3	12.5	10.9	95.5	88.1	92.2	92.3
AUGUST	12.5	9.7	9.8	8.8	14.3	11.9	12.6	11.0	87.2	81.3	77.4	79.9
SEPTEMBER	12.3	9.0	6.9	8.7	13.9	11.5	8.3	10.7	88.5	78.1	82.9	81.5
OCTOBER	11.5	8.6	9.0	7.9	14.5	11.7	11.9	11.2	79.2	74.0	75.6	70.5
NOVEMBER	8.4	6.7	6.6	6.1	11.6	11.1	8.8	7.3	72.2	60.4	74.7	84.0
DECEMBER	8.8	6.5	6.0	5.8	12.1	10.2	7.5	6.9	72.3	63.4	79.5	84.8
<b>TOTAL</b>	<b>136.8</b>	<b>94.9</b>	<b>97.7</b>	<b>91.2</b>	<b>165.6</b>	<b>126.0</b>	<b>127.0</b>	<b>111.4</b>	<b>82.5</b>	<b>75.3</b>	<b>76.9</b>	<b>81.9</b>

Note: (i) All load factors are calculated on the basis of actual figures. The total yearly figure has been rounded off from the actual figure and need not necessarily equal the sum of the rounded off monthly figures.

**Table 2(d): Arrivals by Air from U.K. (Scheduled Flights), 1994 - 1997**

<u>MONTH</u>	<u>(000's)</u>				<u>(000's)</u>				<u>% (i)</u>			
	<u>1994</u>	<u>1995</u>	<u>1996</u>	<u>1997</u>	<u>1994</u>	<u>1995</u>	<u>1996</u>	<u>1997</u>	<u>1994</u>	<u>1995</u>	<u>1996</u>	<u>1997</u>
	<u>SEATS USED</u>				<u>SEATS OFFERED</u>				<u>LOAD FACTOR</u>			
JANUARY	5.1	4.1	4.6	4.6	7.1	7.8	7.7	7.9	71.3	53.0	53.9	57.8
FEBRUARY	5.0	5.6	5.5	5.2	5.9	6.6	7.7	6.3	83.5	84.2	68.9	83.0
MARCH	6.9	7.3	7.0	6.1	7.4	7.8	8.4	6.9	93.8	93.8	83.7	87.4
APRIL	6.7	7.7	6.3	5.4	9.4	10.1	8.5	6.6	71.0	76.0	74.3	82.3
MAY	8.3	8.1	7.7	8.6	9.9	10.3	9.0	9.9	83.2	78.1	86.4	86.4
JUNE	8.3	7.6	7.5	7.6	10.6	9.8	8.7	9.4	79.0	77.0	85.6	80.2
JULY	9.6	8.8	7.6	8.6	10.8	10.3	8.4	9.5	89.0	85.8	90.7	90.8
AUGUST	8.4	7.8	6.6	8.3	11.2	10.1	7.5	10.0	75.4	77.7	87.8	83.4
SEPTEMBER	8.3	7.2	7.2	8.1	10.2	9.3	8.4	10.7	80.8	77.7	86.4	75.6
OCTOBER	7.5	7.3	6.6	8.5	9.8	10.0	8.5	10.4	76.3	73.7	78.3	81.1
NOVEMBER	5.3	5.8	5.8	5.9	6.9	8.4	7.8	9.2	76.3	69.5	74.5	63.7
DECEMBER	5.9	6.5	5.7	6.4	7.2	8.9	8.1	9.8	82.4	73.8	70.7	65.8
<b>TOTAL</b>	<b>85.2</b>	<b>83.8</b>	<b>78.1</b>	<b>83.2</b>	<b>106.4</b>	<b>109.4</b>	<b>98.7</b>	<b>106.6</b>	<b>80.0</b>	<b>76.7</b>	<b>79.1</b>	<b>78.0</b>

Note: (i) All load factors are calculated on the basis of actual figures. The total yearly figure has been rounded off from the actual figure and need not necessarily equal the sum of the rounded off monthly figures.

**Table 2(e): Arrivals by Air from U.K. (Scheduled Flights), 1998 - 2001**

<u>MONTH</u>	<u>(000's)</u>				<u>(000's)</u>				<u>% (i)</u>			
	<u>SEATS USED</u>				<u>SEATS OFFERED</u>				<u>LOAD FACTOR</u>			
	<u>1998</u>	<u>1999</u>	<u>2000</u>	<u>2001</u>	<u>1998</u>	<u>1999</u>	<u>2000</u>	<u>2001</u>	<u>1998</u>	<u>1999</u>	<u>2000</u>	<u>2001</u>
JANUARY	4.8	5.2	4.6	5.4	9.4	8.4	11.1	9.4	51.1	62.5	41.5	57.3
FEBRUARY	6.0	6.3	6.2	6.9	9.0	7.4	9.8	8.3	66.4	84.5	63.6	82.7
MARCH	7.6	8.1	8.7	8.6	9.8	8.8	10.7	9.8	78.1	91.4	81.3	87.9
APRIL	7.8	7.8	9.1	9.0	10.0	9.8	10.4	10.6	77.9	80.4	87.2	84.5
MAY	9.0	10.0	10.1	11.1	11.4	12.5	13.4	13.2	79.0	80.3	75.9	83.6
JUNE	8.0	9.8	9.7	11.0	10.9	11.8	12.4	12.8	73.6	82.7	78.3	85.7
JULY	9.3	10.7	10.8	11.7	10.6	12.4	13.4	13.5	87.3	85.8	80.8	86.6
AUGUST	9.2	9.2	10.1	10.5	11.2	11.6	12.9	13.4	82.2	79.2	78.1	78.3
SEPTEMBER	8.4	8.9	10.5	10.2	10.7	11.8	12.7	12.8	78.0	75.6	82.5	79.5
OCTOBER	8.2	8.3	10.0	9.5	11.2	11.7	13.4	13.4	73.1	70.3	74.6	70.9
NOVEMBER	6.5	6.5	7.0	7.5	8.4	9.7	9.1	10.6	78.0	67.0	76.2	71.1
DECEMBER	6.3	7.1	7.0	7.5	7.9	10.6	9.3	9.7	79.7	66.9	75.0	76.5
<b>TOTAL</b>	<b>91.0</b>	<b>97.8</b>	<b>103.7</b>	<b>108.8</b>	<b>120.4</b>	<b>126.5</b>	<b>138.6</b>	<b>137.7</b>	<b>75.6</b>	<b>77.3</b>	<b>74.9</b>	<b>79.0</b>

Note: (i) All load factors are calculated on the basis of actual figures. The total yearly figure has been rounded off from the actual figure and need not necessarily equal the sum of the rounded off monthly figures.

**Table 2(f): Arrivals by Air from U.K. (Scheduled Flights), 2002 - 2005**

<u>MONTH</u>	<u>(000's)</u>				<u>(000's)</u>				<u>% (i)</u>			
	<u>2002</u>	<u>2003</u>	<u>2004</u>	<u>2005</u>	<u>2002</u>	<u>2003</u>	<u>2004</u>	<u>2005</u>	<u>2002</u>	<u>2003</u>	<u>2004</u>	<u>2005</u>
	<u>SEATS USED</u>				<u>SEATS OFFERED</u>				<u>LOAD FACTOR</u>			
JANUARY	5.5	6.5	7.5	10.0	9.3	11.4	12.4	15.9	59.6	57.4	60.0	62.7
FEBRUARY	7.6	7.9	9.2	10.5	8.9	9.3	11.9	14.4	85.9	84.8	77.8	73.2
MARCH	10.2	10.3	12.4	13.4	11.7	13.2	15.4	16.6	87.4	78.2	80.7	80.7
APRIL	8.0	11.0	12.9	13.9	10.7	13.2	16.7	17.6	75.2	82.9	77.0	78.9
MAY	10.4	13.0	14.0	16.0	14.1	16.1	20.2	21.1	73.8	80.9	69.3	75.8
JUNE	10.4	12.2	14.3	16.2	13.3	15.6	19.5	20.4	78.3	78.6	73.4	79.7
JULY	13.2	14.6	17.5	18.4	14.6	16.1	20.1	21.1	90.4	90.6	87.2	87.4
AUGUST	12.2	13.2	16.2	18.2	14.3	16.1	20.2	21.2	85.5	81.8	80.4	85.8
SEPTEMBER	11.4	12.0	15.5	17.0	13.6	15.5	19.6	20.5	83.6	77.2	79.0	83.3
OCTOBER	11.0	12.3	14.3	16.4	14.4	15.9	20.3	20.9	76.4	77.5	70.6	78.4
NOVEMBER	8.0	10.2	11.7	11.5	10.7	14.1	15.2	16.7	74.7	71.9	76.8	69.0
DECEMBER	7.6	9.8	11.6	11.1	10.7	13.8	15.0	15.3	71.4	71.3	77.0	72.7
<b>TOTAL</b>	<b>115.7</b>	<b>133.0</b>	<b>157.0</b>	<b>172.7</b>	<b>146.3</b>	<b>170.3</b>	<b>206.4</b>	<b>221.6</b>	<b>79.1</b>	<b>78.1</b>	<b>76.1</b>	<b>77.9</b>

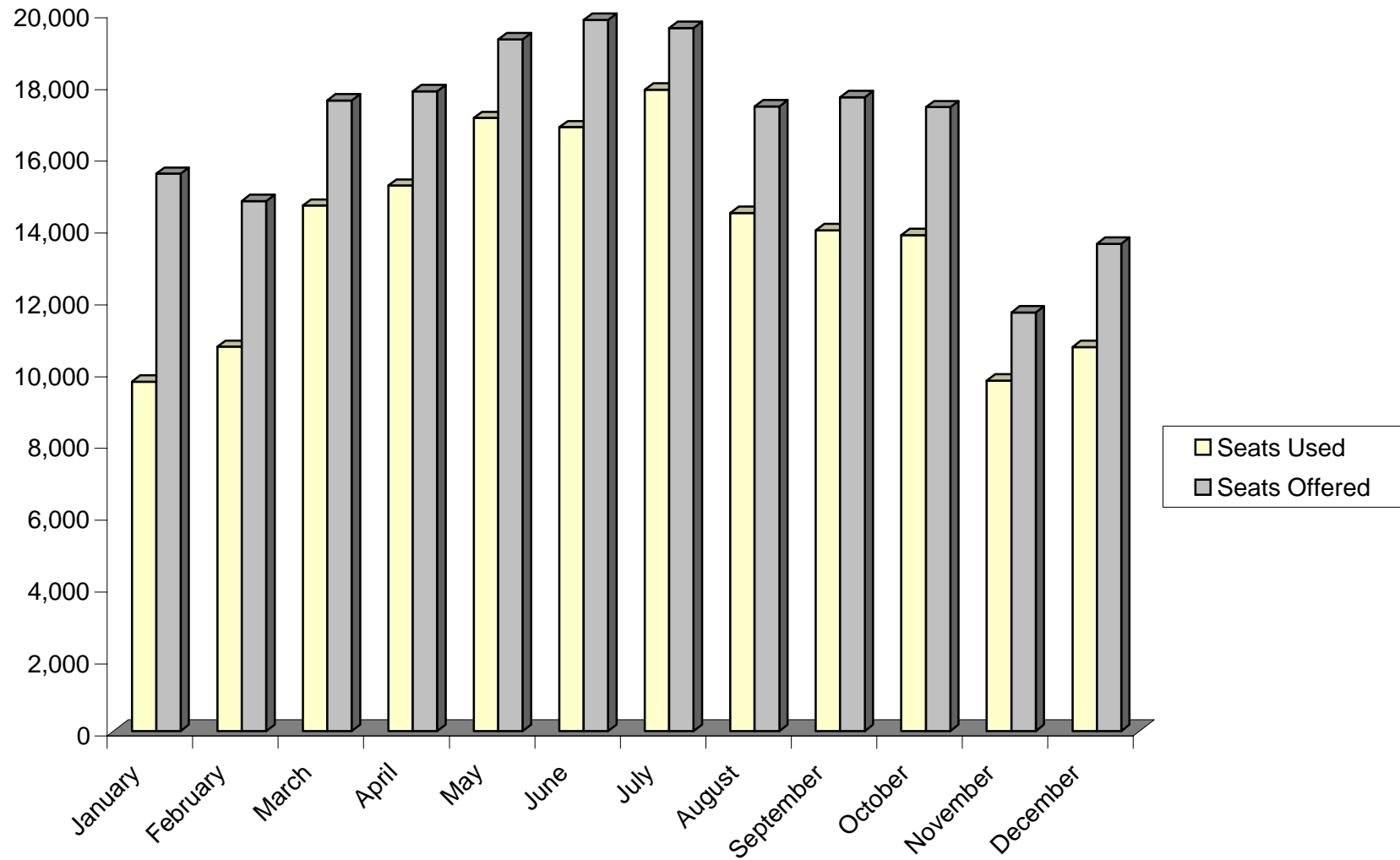
Note: (i) All load factors are calculated on the basis of actual figures. The total yearly figure has been rounded off from the actual figure and need not necessarily equal the sum of the rounded off monthly figures.

**Table 2(g): Arrivals by Air from U.K. (Scheduled Flights), 2006**

<u>MONTH</u>	<u>(000's)</u>		<u>% (i)</u>
	<u>SEATS USED</u>	<u>SEATS OFFERED</u>	<u>LOAD FACTOR</u>
January	9.7	15.5	62.7
February	10.7	14.8	72.5
March	14.6	17.6	83.3
April	15.2	17.8	85.2
May	17.1	19.3	88.6
June	16.8	19.8	84.9
July	17.9	19.6	91.2
August	14.4	17.4	82.9
September	13.9	17.6	79.0
October	13.8	17.4	79.5
November	9.8	11.7	83.7
December	10.7	13.6	78.8
<b>TOTAL</b>	<b>164.6</b>	<b>202.0</b>	<b>81.5</b>

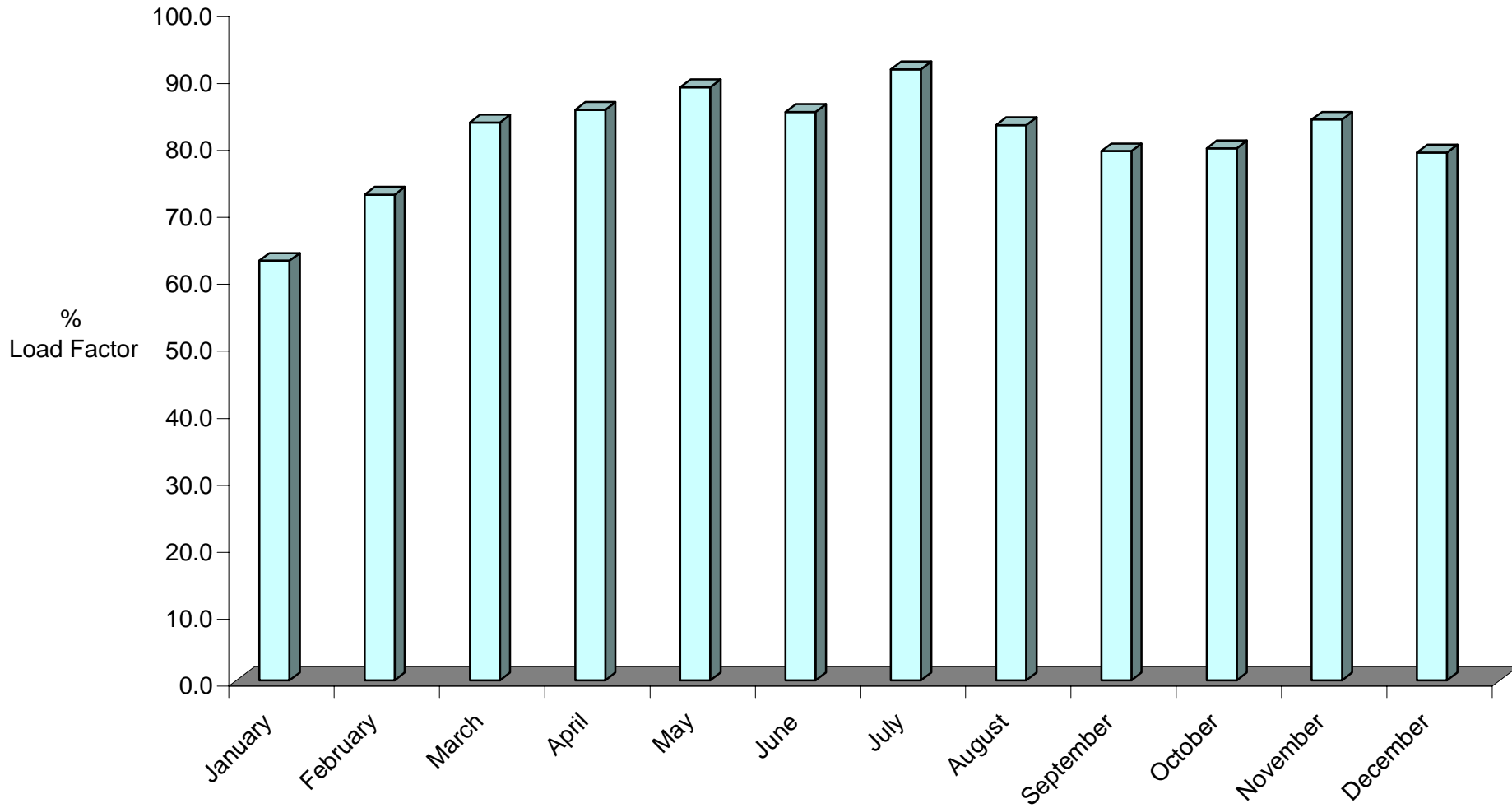
Note: (i) Load factors are calculated on the basis of actual figures and exclude visitors in transit when applicable. The total yearly figures have been rounded off from the actual figures and need not necessarily equal the sum of the rounded off monthly figures.

**ARRIVALS BY AIR FROM U.K. (SCHEDULED FLIGHTS), 2006**





**ARRIVALS BY AIR FROM U.K. (SCHEDULED FLIGHTS), LOAD FACTOR, 2006**



**Table 3(a): Departures by Air to U.K. (Scheduled Flights), 1982 - 1984**

<u>MONTH</u>	<u>(000's)</u>			<u>(000's)</u>			<u>%</u>					
	<u>SEATS USED</u>			<u>SEATS OFFERED</u>			<u>LOAD FACTOR</u>					
	<u>1982</u>	<u>1983</u>	<u>1984</u>	<u>1982</u>	<u>1983</u>	<u>1984</u>	<u>1982</u>		<u>1983</u>		<u>1984</u>	
							(i)	(ii)	(i)	(ii)	(i)	(ii)
JANUARY	1.9	1.7	2.1	2.2	2.9	2.6	85.2	(82.5)	61.2	(58.8)	80.5	(77.6)
FEBRUARY	1.6	1.5	1.5	2.3	2.6	2.1	70.9	(67.4)	56.6	(53.7)	72.6	(69.7)
MARCH	1.9	2.0	2.0	2.1	3.0	2.4	91.3	(86.2)	67.2	(61.7)	85.2	(81.3)
APRIL	2.6	2.6	2.5	3.2	3.9	3.1	82.1	(80.3)	65.8	(63.4)	80.3	(77.6)
MAY	2.1	2.0	2.0	3.2	4.0	3.2	67.0	(65.3)	48.6	(47.0)	64.0	(61.7)
JUNE	2.3	2.6	2.4	3.4	3.9	3.2	69.3	(67.4)	65.5	(64.2)	74.3	(72.2)
JULY	2.5	2.4	2.3	3.5	4.0	3.3	70.4	(69.3)	60.8	(59.2)	69.6	(68.0)
AUGUST	3.0	3.3	3.1	3.3	4.0	3.3	90.6	(88.6)	81.4	(79.5)	94.1	(92.2)
SEPTEMBER	2.8	3.1	3.0	3.4	3.9	3.3	83.1	(81.5)	78.3	(75.3)	92.5	(89.5)
OCTOBER	2.5	2.5	2.6	3.4	3.6	3.2	72.2	(68.2)	69.9	(66.6)	80.5	(76.2)
NOVEMBER	1.9	1.6	2.1	2.8	2.2	2.4	67.7	(64.2)	74.2	(71.1)	87.9	(83.0)
DECEMBER	1.6	1.5	2.0	2.8	2.4	2.5	55.2	(53.5)	63.3	(61.4)	78.9	(77.4)
<b>TOTAL</b>	<b>26.7</b>	<b>26.8</b>	<b>27.6</b>	<b>35.6</b>	<b>40.4</b>	<b>34.6</b>	<b>75.1</b>	<b>(72.6)</b>	<b>66.2</b>	<b>(63.7)</b>	<b>80.0</b>	<b>(77.2)</b>

Notes: (i) All load factors are calculated on the basis of actual figures. The total yearly figure has been rounded off from the actual figure and need not necessarily equal the sum of the rounded off monthly figures.  
(ii) Revenue load factors exclude non-paying passengers and are also calculated on actual figures.

**Table 3(b): Departures by Air to U.K. (Scheduled Flights), 1985 - 1987**

<u>MONTH</u>	<u>(000's)</u>			<u>(000's)</u>			<u>%</u>					
	<u>SEATS USED</u>			<u>SEATS OFFERED</u>			<u>LOAD FACTOR</u>					
	<u>1985</u>	<u>1986</u>	<u>1987</u>	<u>1985</u>	<u>1986</u>	<u>1987</u>	<u>1985</u>		<u>1986</u>		<u>1987</u>	
							(i)	(ii)	(i)	(ii)	(i)	(ii)
JANUARY	2.3	5.2	6.4	2.6	6.9	7.9	89.3 (87.0)		75.8 (74.2)		80.6 (79.4)	
FEBRUARY	1.9	4.1	4.7	2.2	5.9	6.6	85.9 (82.8)		70.0 (66.1)		70.8 (68.0)	
MARCH	2.8	6.0	7.0	3.2	7.1	8.6	89.9 (86.4)		84.1 (82.8)		81.8 (78.1)	
APRIL	4.0	6.8	7.5	4.6	7.3	8.3	89.0 (87.3)		92.0 (90.5)		90.2 (89.1)	
MAY	3.6	6.3	8.7	4.4	8.6	11.2	81.7 (79.9)		73.9 (72.4)		77.8 (76.1)	
JUNE	4.3	7.5	8.7	5.0	8.6	11.9	85.5 (84.4)		87.1 (85.9)		72.9 (71.4)	
JULY	4.3	6.9	8.7	5.6	9.0	12.1	76.3 (75.5)		76.6 (75.4)		71.9 (70.6)	
AUGUST	6.2	9.2	11.6	6.5	9.8	12.5	94.3 (93.4)		93.4 (92.7)		92.5 (91.7)	
SEPTEMBER	5.6	8.6	10.6	5.9	9.0	11.7	94.1 (92.4)		95.7 (94.1)		90.3 (89.2)	
OCTOBER	5.2	8.5	10.5	5.9	9.1	12.5	89.2 (86.8)		93.0 (91.1)		84.1 (82.5)	
NOVEMBER	5.4	6.2	9.4	6.3	7.4	12.9	85.6 (82.7)		83.8 (81.2)		72.3 (71.1)	
DECEMBER	4.4	4.9	6.9	7.5	8.2	13.0	58.9 (58.0)		59.7 (58.5)		55.6 (53.6)	
<b>TOTAL</b>	<b>50.0</b>	<b>80.1</b>	<b>100.7</b>	<b>59.7</b>	<b>96.9</b>	<b>129.2</b>	<b>83.9 (82.1)</b>		<b>82.7 (81.1)</b>		<b>77.8 (77.7)</b>	

Notes: (i) All load factors are calculated on the basis of actual figures. The total yearly figure has been rounded off from the actual figure and need not necessarily equal the sum of the rounded off monthly figures.

(ii) Revenue load factors exclude non-paying passengers and are also calculated on actual figures.

**Table 3(c): Departures by Air to U.K. (Scheduled Flights), 1988 - 1990**

<u>MONTH</u>	<u>(000's)</u>			<u>(000's)</u>			<u>%</u>					
	<u>SEATS USED</u>			<u>SEATS OFFERED</u>			<u>LOAD FACTOR</u>					
	<u>1988</u>	<u>1989</u>	<u>1990</u>	<u>1988</u>	<u>1989</u>	<u>1990</u>	<u>1988</u>		<u>1989</u>		<u>1990</u>	
							(i)	(ii)	(i)	(ii)	(i)	(ii)
JANUARY	9.0	12.2	11.4	12.7	18.0	15.4	70.6 (69.7)		67.7 (66.4)		74.3 (73.0)	
FEBRUARY	8.2	10.2	10.5	11.2	14.4	13.3	73.1 (72.0)		70.9 (69.3)		79.1 (77.2)	
MARCH	9.4	11.9	12.3	12.9	17.8	14.4	73.0 (71.5)		67.1 (65.0)		85.0 (83.2)	
APRIL	12.2	13.6	13.0	14.4	17.5	14.6	85.0 (83.6)		77.3 (76.3)		89.2 (87.9)	
MAY	11.6	13.3	11.7	16.8	18.7	14.2	68.9 (67.8)		70.7 (69.4)		82.2 (80.6)	
JUNE	14.1	15.9	13.2	16.6	19.5	14.1	85.1 (83.8)		81.6 (80.5)		93.3 (92.0)	
JULY	13.3	17.1	12.5	17.5	24.5	14.6	76.0 (75.3)		70.0 (69.0)		86.0 (84.7)	
AUGUST	15.9	20.9	13.7	18.1	24.5	15.2	87.9 (87.3)		85.1 (84.4)		90.5 (89.8)	
SEPTEMBER	15.4	18.4	13.4	17.8	22.0	14.3	86.2 (85.2)		83.5 (82.5)		93.2 (91.7)	
OCTOBER	15.5	18.3	13.8	18.2	22.5	14.7	85.5 (84.4)		81.5 (80.1)		93.5 (92.2)	
NOVEMBER	11.0	11.9	9.6	14.9	15.5	12.0	74.3 (72.4)		77.2 (75.3)		80.5 (77.5)	
DECEMBER	8.7	10.2	8.7	16.1	15.0	12.1	53.8 (53.1)		68.2 (67.1)		71.8 (70.2)	
<b>TOTAL</b>	<b>144.3</b>	<b>174.0</b>	<b>143.8</b>	<b>187.2</b>	<b>230.0</b>	<b>168.9</b>	<b>77.1 (76.1)</b>		<b>75.7 (70.5)</b>		<b>85.1 (83.6)</b>	

Notes: (i) All load factors are calculated on the basis of actual figures. The total yearly figure has been rounded off from the actual figure and need not necessarily equal the sum of the rounded off monthly figures.

(ii) Revenue load factors exclude non-paying passengers and are also calculated on actual figures.

**Table 3(d): Departures by Air to U.K. (Scheduled Flights), 1991 - 1993**

<u>MONTH</u>	<u>(000's)</u>			<u>(000's)</u>			<u>%</u>					
	<u>SEATS USED</u>			<u>SEATS OFFERED</u>			<u>LOAD FACTOR</u>					
	<u>1991</u>	<u>1992</u>	<u>1993</u>	<u>1991</u>	<u>1992</u>	<u>1993</u>	<u>1991</u>		<u>1992</u>		<u>1993</u>	
							(i)	(ii)	(i)	(ii)	(i)	(ii)
JANUARY	7.5	6.7	6.1	12.1	10.2	7.6	62.1 (60.6)		65.9 (64.8)		80.5 (79.3)	
FEBRUARY	6.7	6.2	5.4	10.3	8.6	6.4	65.4 (63.2)		72.5 (70.2)		83.8 (82.9)	
MARCH	6.2	7.0	6.7	8.7	9.2	7.8	71.3 (69.1)		76.0 (73.8)		86.1 (84.7)	
APRIL	7.8	9.5	8.3	8.6	12.8	10.0	90.2 (87.6)		74.3 (73.2)		82.3 (81.0)	
MAY	6.9	8.6	7.9	8.2	12.6	11.1	83.6 (81.0)		68.1 (66.8)		71.3 (69.8)	
JUNE	7.9	9.8	9.4	9.8	12.2	11.1	80.5 (77.9)		80.4 (79.1)		84.1 (82.9)	
JULY	9.2	9.8	8.7	12.4	12.5	11.3	73.8 (71.2)		78.5 (76.7)		77.5 (76.7)	
AUGUST	11.0	11.5	10.0	12.3	12.8	10.9	89.5 (87.0)		89.7 (88.8)		91.4 (90.5)	
SEPTEMBER	9.9	7.6	9.7	12.2	8.2	10.5	81.7 (78.7)		91.9 (90.2)		92.2 (91.0)	
OCTOBER	10.1	10.5	9.5	12.1	11.9	11.1	83.3 (81.5)		87.7 (85.9)		86.0 (85.0)	
NOVEMBER	7.3	7.8	6.5	10.9	9.0	7.3	67.0 (65.4)		86.0 (84.2)		88.8 (87.3)	
DECEMBER	6.1	5.6	5.1	10.2	7.6	6.9	59.7 (58.5)		73.8 (72.5)		73.2 (72.4)	
<b>TOTAL</b>	<b>96.6</b>	<b>100.5</b>	<b>93.3</b>	<b>127.8</b>	<b>127.7</b>	<b>112.2</b>	<b>75.6 (73.3)</b>		<b>78.7 (77.2)</b>		<b>83.2 (82.0)</b>	

Notes: (i) All load factors are calculated on the basis of actual figures. The total yearly figure has been rounded off from the actual figure and need not necessarily equal the sum of the rounded off monthly figures.

(ii) Revenue load factors exclude non-paying passengers and are also calculated on actual figures.

**Table 3(e): Departures by Air to U.K. (Scheduled Flights), 1994 - 1996**

<u>MONTH</u>	<u>(000's)</u>			<u>(000's)</u>			<u>%</u>					
	<u>SEATS USED</u>			<u>SEATS OFFERED</u>			<u>LOAD FACTOR</u>					
	<u>1994</u>	<u>1995</u>	<u>1996</u>	<u>1994</u>	<u>1995</u>	<u>1996</u>	<u>1994</u>		<u>1995</u>		<u>1996</u>	
							(i)	(ii)	(i)	(ii)	(i)	(ii)
JANUARY	5.8	5.5	5.3	7.1	7.8	7.7	81.9	(80.8)	70.8	(70.3)	69.4	(69.0)
FEBRUARY	5.0	5.2	5.6	6.2	6.9	8.2	81.7	(80.1)	75.1	(74.4)	68.1	(67.6)
MARCH	5.5	6.6	6.3	7.5	7.7	8.1	74.1	(72.9)	85.1	(84.6)	77.1	(76.4)
APRIL	7.6	8.3	7.0	9.3	10.3	8.7	81.9	(81.2)	80.5	(80.3)	81.0	(80.7)
MAY	7.6	7.3	7.0	10.1	10.4	8.7	76.3	(75.2)	69.8	(69.4)	79.9	(79.5)
JUNE	8.7	8.2	8.1	10.4	9.9	9.1	84.8	(83.7)	82.5	(82.0)	89.5	(89.1)
JULY	8.4	7.9	6.8	10.9	10.3	8.6	77.0	(77.5)	76.5	(76.0)	79.1	(79.0)
AUGUST	9.7	8.5	6.8	10.9	10.3	7.6	89.0	(88.3)	82.8	(82.4)	89.7	(89.5)
SEPTEMBER	9.3	8.4	8.0	10.2	9.6	8.5	91.8	(91.2)	87.6	(87.0)	93.5	(93.2)
OCTOBER	8.9	8.3	7.3	10.2	9.9	8.3	88.3	(87.5)	83.0	(82.4)	88.6	(88.2)
NOVEMBER	5.6	6.3	5.9	6.8	8.5	7.6	83.3	(82.4)	73.8	(73.1)	77.7	(77.1)
DECEMBER	4.8	4.8	4.1	7.2	7.9	7.0	67.3	(66.9)	61.5	(60.8)	58.8	(58.4)
<b>TOTAL</b>	<b>86.9</b>	<b>85.3</b>	<b>78.2</b>	<b>107.1</b>	<b>109.5</b>	<b>98.1</b>	<b>81.2</b>	<b>(80.3)</b>	<b>77.8</b>	<b>(77.3)</b>	<b>79.6</b>	<b>(79.0)</b>

Notes: (i) All load factors are calculated on the basis of actual figures. The total yearly figure has been rounded off from the actual figure and need not necessarily equal the sum of the rounded off monthly figures.

(ii) Revenue load factors exclude non-paying passengers and are also calculated on actual figures.

**Table 3(f): Departures by Air to U.K. (Scheduled Flights), 1997 - 1999**

<u>MONTH</u>	<u>(000's)</u>			<u>(000's)</u>			<u>%</u>					
	<u>SEATS USED</u>			<u>SEATS OFFERED</u>			<u>LOAD FACTOR</u>					
	<u>1997</u>	<u>1998</u>	<u>1999</u>	<u>1997</u>	<u>1998</u>	<u>1999</u>	<u>1997</u>		<u>1998</u>		<u>1999</u>	
							(i)	(ii)	(i)	(ii)	(i)	(ii)
JANUARY	4.7	6.0	6.3	6.8	9.5	8.5	68.5 (67.4)		63.1 (62.7)		74.1 (73.9)	
FEBRUARY	5.1	5.3	5.7	6.4	8.7	7.5	79.4 (78.3)		60.7 (60.2)		75.1 (74.3)	
MARCH	5.2	6.7	7.0	6.8	9.9	8.5	76.4 (75.5)		67.9 (67.9)		82.8 (82.7)	
APRIL	6.1	8.2	8.7	6.7	10.0	9.8	90.1 (89.7)		81.9 (81.7)		89.0 (88.5)	
MAY	7.7	8.0	8.9	9.6	11.2	12.5	79.8 (79.2)		71.3 (70.9)		71.0 (71.0)	
JUNE	7.9	8.1	10.0	9.5	10.8	11.6	83.2 (83.0)		74.6 (74.2)		86.3 (86.3)	
JULY	7.5	7.7	9.4	9.7	10.3	12.5	77.0 (76.7)		74.5 (74.3)		75.7 (75.7)	
AUGUST	8.7	9.9	9.6	9.5	11.1	11.4	91.7 (91.4)		89.5 (89.4)		84.7 (84.7)	
SEPTEMBER	8.8	9.2	10.2	10.5	10.4	11.8	83.8 (83.5)		88.5 (88.4)		86.3 (86.3)	
OCTOBER	8.6	8.9	9.0	9.6	11.0	11.8	90.0 (89.6)		80.5 (80.3)		76.4 (76.4)	
NOVEMBER	6.5	7.1	7.4	9.2	8.3	10.0	70.3 (70.0)		84.9 (84.4)		74.4 (74.4)	
DECEMBER	4.7	5.0	5.1	10.1	7.6	10.6	46.3 (46.1)		66.2 (65.5)		48.0 (47.9)	
<b>TOTAL</b>	<b>81.5</b>	<b>90.1</b>	<b>97.4</b>	<b>104.4</b>	<b>119.0</b>	<b>126.5</b>	<b>78.1 (77.6)</b>		<b>75.7 (75.4)</b>		<b>77.0 (76.9)</b>	

Notes: (i) All load factors are calculated on the basis of actual figures. The total yearly figure has been rounded off from the actual figure and need not necessarily equal the sum of the rounded off monthly figures.

(ii) Revenue load factors exclude non-paying passengers and are also calculated on actual figures.

**Table 3(g): Departures by Air to U.K. (Scheduled Flights), 2000 - 2002**

<u>MONTH</u>	<u>(000's)</u>			<u>(000's)</u>			<u>%</u>					
	<u>SEATS USED</u>			<u>SEATS OFFERED</u>			<u>LOAD FACTOR</u>					
	<u>2000</u>	<u>2001</u>	<u>2002</u>	<u>2000</u>	<u>2001</u>	<u>2002</u>	<u>2000</u>		<u>2001</u>		<u>2002</u>	
							(i)	(ii)	(i)	(ii)	(i)	(ii)
JANUARY	6.5	6.6	6.4	11.1	9.4	9.5	58.8	(58.7)	70.2	(70.2)	67.7	(67.7)
FEBRUARY	6.0	6.6	7.0	9.8	8.4	8.9	61.5	(61.4)	78.9	(78.9)	78.4	(78.4)
MARCH	8.0	7.9	8.4	10.6	9.8	11.1	75.2	(74.9)	81.0	(81.0)	75.7	(75.7)
APRIL	9.1	9.4	9.3	10.1	10.6	10.7	89.4	(89.3)	87.9	(87.9)	86.5	(86.5)
MAY	9.9	10.2	9.4	13.3	13.3	14.1	74.5	(74.5)	76.7	(76.7)	66.5	(66.5)
JUNE	10.5	11.0	10.5	12.4	12.9	13.3	84.9	(84.8)	85.7	(85.7)	79.1	(79.1)
JULY	9.8	10.3	10.8	13.4	13.5	14.8	73.0	(72.9)	76.0	(76.0)	72.9	(72.9)
AUGUST	10.6	11.5	13.1	12.7	13.4	14.5	83.6	(83.5)	85.4	(85.4)	90.5	(90.5)
SEPTEMBER	11.7	11.1	12.6	12.8	12.8	13.6	91.4	(91.2)	86.6	(86.6)	92.7	(92.7)
OCTOBER	11.1	11.3	11.7	13.2	13.5	14.4	84.2	(84.1)	83.9	(83.9)	81.3	(81.3)
NOVEMBER	7.5	8.5	8.6	9.2	10.7	10.7	82.1	(82.0)	79.9	(79.9)	80.6	(80.6)
DECEMBER	5.7	6.0	6.2	9.3	9.5	10.5	61.3	(60.8)	63.2	(63.2)	58.8	(58.8)
<b>TOTAL</b>	<b>106.6</b>	<b>110.5</b>	<b>114.0</b>	<b>138.1</b>	<b>137.9</b>	<b>146.1</b>	<b>77.2</b>	<b>(77.1)</b>	<b>80.1</b>	<b>(80.1)</b>	<b>78.0</b>	<b>(78.0)</b>

Notes: (i) All load factors are calculated on the basis of actual figures. The total yearly figure has been rounded off from the actual figure and need not necessarily equal the sum of the rounded off monthly figures.

(ii) Revenue load factors exclude non-paying passengers and are also calculated on actual figures.



**Table 3(h): Departures by Air to U.K. (Scheduled Flights), 2003 - 2005**

<u>MONTH</u>	<u>(000's)</u>			<u>(000's)</u>			<u>%</u>					
	<u>SEATS USED</u>			<u>SEATS OFFERED</u>			<u>LOAD FACTOR</u>					
	<u>2003</u>	<u>2004</u>	<u>2005</u>	<u>2003</u>	<u>2004</u>	<u>2005</u>	<u>2003</u>		<u>2004</u>		<u>2005</u>	
							(i)	(ii)	(i)	(ii)	(i)	(ii)
JANUARY	7.5	8.7	11.9	11.4	12.4	15.8	66.2 (66.2)		70.0 (69.9)		75.4 (75.4)	
FEBRUARY	7.3	9.1	10.2	9.3	11.9	14.4	77.8 (77.8)		76.2 (76.2)		70.8 (70.8)	
MARCH	10.1	11.6	11.8	13.2	15.4	16.6	76.6 (76.6)		75.3 (75.3)		71.1 (71.1)	
APRIL	10.5	13.0	14.4	12.9	16.7	17.6	81.1 (81.1)		77.7 (77.7)		81.9 (81.9)	
MAY	12.0	12.3	14.4	16.1	20.2	21.1	74.7 (74.6)		61.0 (61.0)		68.6 (68.6)	
JUNE	12.8	15.1	17.2	15.4	19.5	20.5	83.3 (83.3)		77.6 (77.6)		83.7 (83.7)	
JULY	12.0	14.9	16.3	16.1	20.0	21.1	74.7 (74.6)		74.2 (74.2)		77.5 (77.5)	
AUGUST	14.6	17.9	18.8	16.1	20.2	21.2	91.0 (91.0)		88.5 (88.5)		88.7 (88.7)	
SEPTEMBER	13.7	17.1	19.0	15.5	19.6	20.4	88.1 (88.1)		87.2 (87.2)		92.8 (92.8)	
OCTOBER	12.9	15.4	17.5	15.9	20.3	20.9	81.0 (80.9)		75.8 (75.8)		83.8 (83.8)	
NOVEMBER	10.9	12.6	12.6	14.1	15.2	16.6	77.4 (77.4)		83.1 (83.1)		75.8 (75.8)	
DECEMBER	8.5	9.8	9.6	13.8	15.0	15.1	61.6 (61.6)		64.9 (64.9)		63.3 (63.3)	
<b>TOTAL</b>	<b>132.9</b>	<b>157.3</b>	<b>173.7</b>	<b>169.8</b>	<b>206.4</b>	<b>221.4</b>	<b>78.2 (78.2)</b>		<b>76.2 (76.2)</b>		<b>78.5 (78.5)</b>	

Notes: (i) All load factors are calculated on the basis of actual figures. The total yearly figure has been rounded off from the actual figure and need not necessarily equal the sum of the rounded off monthly figures.

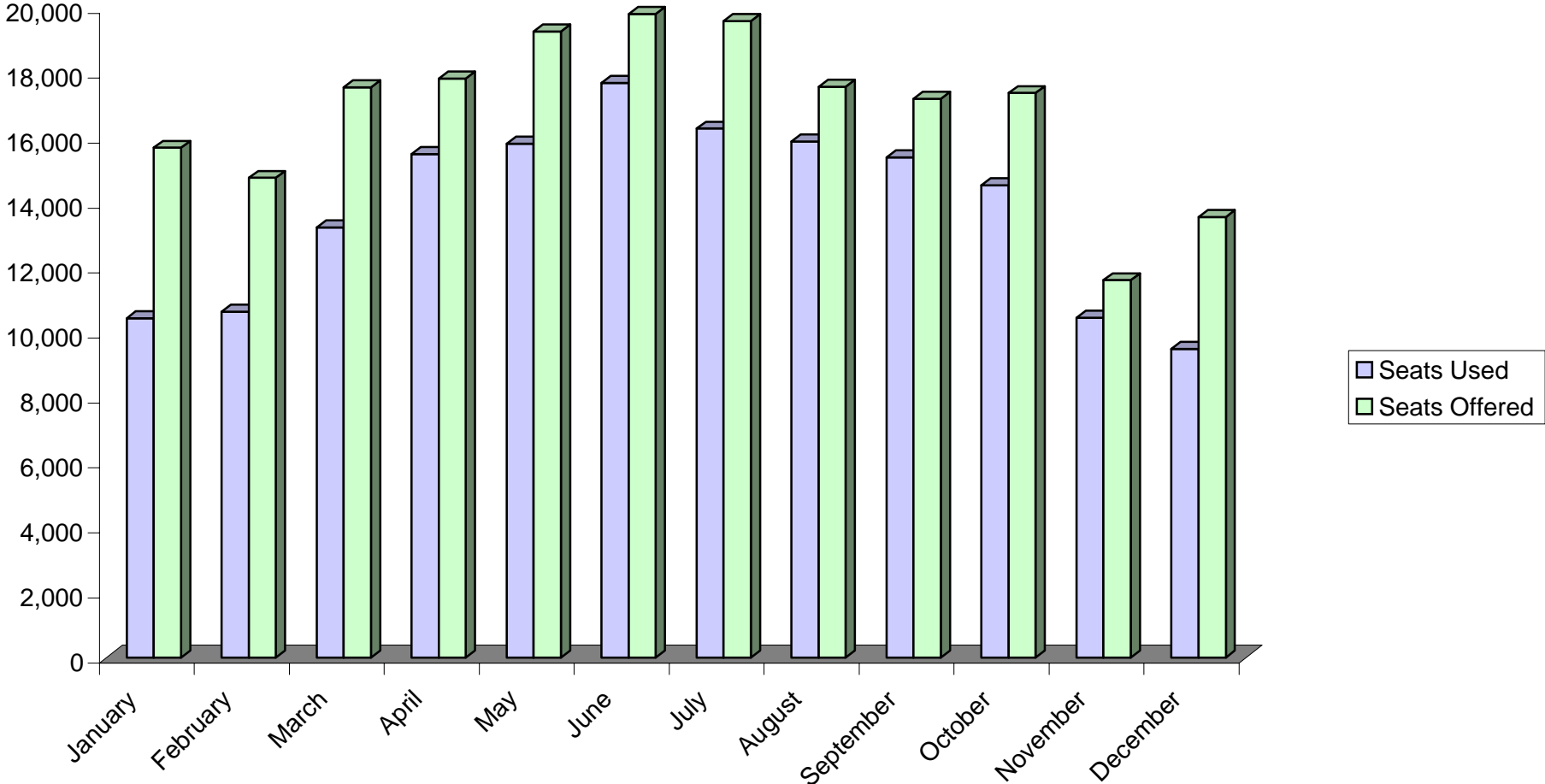
(ii) Revenue load factors exclude non-paying passengers and are also calculated on actual figures.

**Table 3(i): Departures by Air to U.K. (Scheduled Flights), 2006**

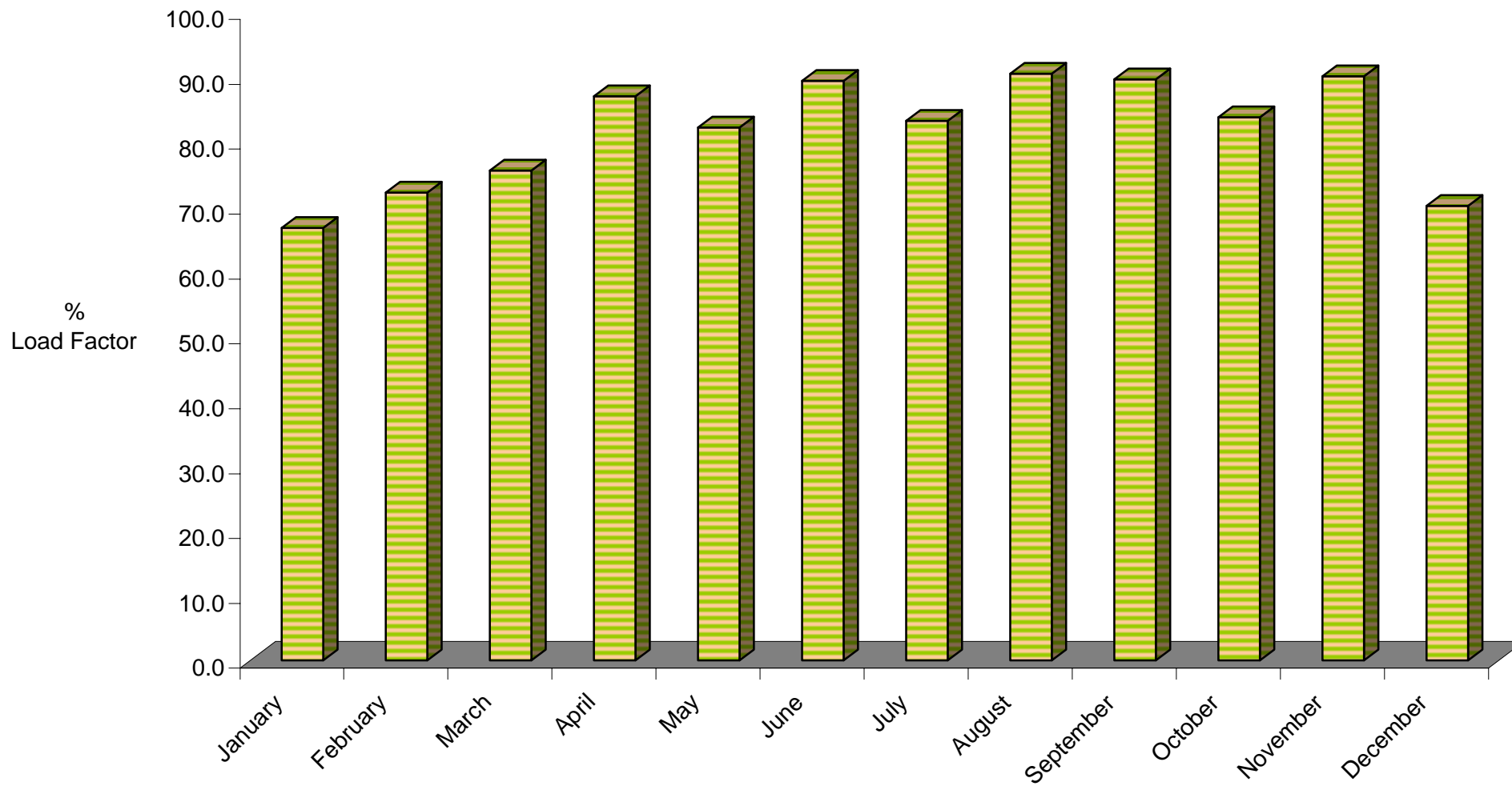
<u>MONTH</u>	<u>(000's)</u>		<u>% (i)</u>
	<u>SEATS USED</u>	<u>SEATS OFFERED</u>	<u>LOAD FACTOR</u>
January	10.5	15.7	66.6
February	10.6	14.8	72.1
March	13.2	17.6	75.5
April	15.5	17.8	87.0
May	15.8	19.3	82.1
June	17.7	19.8	89.3
July	16.3	19.6	83.1
August	15.9	17.6	90.4
September	15.4	17.2	89.5
October	14.5	17.4	83.7
November	10.5	11.6	90.0
December	9.5	13.6	70.0
<b>TOTAL</b>	<b>165.4</b>	<b>201.9</b>	<b>81.9</b>

Note: (i) Load factors are calculated on the basis of actual figures and exclude visitors in transit when applicable. The total yearly figures have been rounded off from the actual figures and need not necessarily equal the sum of the rounded off monthly figures.

**DEPARTURES BY AIR TO U.K. (SCHEDULED FLIGHTS), 2006**



**DEPARTURES BY AIR TO U.K. (SCHEDULED FLIGHTS), LOAD FACTOR, 2006**



**Table 4(a): Arrivals by Air from U.K. (Charter Flights), 1986 - 1989**

<u>MONTH</u>	<u>(000's)</u>				<u>(000's)</u>				<u>%</u>			
	<u>SEATS USED</u>				<u>SEATS OFFERED</u>				<u>LOAD FACTOR</u>			
	<u>1986</u>	<u>1987</u>	<u>1988</u>	<u>1989</u>	<u>1986</u>	<u>1987</u>	<u>1988</u>	<u>1989</u>	<u>1986</u>	<u>1987</u>	<u>1988</u>	<u>1989</u>
JANUARY	-	2.3	1.6	1.2	-	2.5	1.7	1.7	-	92.2	93.4	72.4
FEBRUARY	0.1	1.5	1.5	1.4	0.1	1.6	1.6	1.8	90.8	97.1	97.5	77.9
MARCH	-	1.2	1.8	0.4	-	1.2	1.8	0.4	-	95.7	96.7	84.7
APRIL	-	1.6	1.2	0.8	-	1.6	1.4	1.3	-	97.6	80.5	61.4
MAY	0.8	0.1	0.6	-	1.0	0.2	0.7	-	83.8	61.9	90.2	-
JUNE	0.7	1.2	0.2	-	0.8	1.3	0.3	-	84.5	88.8	85.7	-
JULY	0.6	1.0	0.5	-	0.6	1.0	0.5	-	94.9	98.0	96.7	-
AUGUST	0.7	1.0	0.6	-	0.7	1.0	0.7	-	96.8	97.1	95.4	-
SEPTEMBER	0.6	1.3	0.5	0.2	0.6	1.3	0.6	0.2	95.4	98.4	74.3	77.9
OCTOBER	0.6	0.8	0.6	-	0.9	1.0	0.7	0.1	66.1	75.4	95.2	-
NOVEMBER	-	1.5	1.1	0.8	-	1.6	1.2	1.2	-	98.3	96.9	66.0
DECEMBER	-	1.6	1.5	0.8	-	1.7	1.7	1.0	-	96.0	86.5	80.9
<b>TOTAL</b>	<b>4.1</b>	<b>15.1</b>	<b>11.6</b>	<b>5.6</b>	<b>4.8</b>	<b>16.1</b>	<b>12.7</b>	<b>7.8</b>	<b>84.1</b>	<b>94.4</b>	<b>90.7</b>	<b>71.7</b>

Notes: (i) Figures exclude MoD charter flights.

(ii) The total yearly figures have been rounded off from the actual figures and need not necessarily equal the sum of the rounded off monthly figures.

**Table 4(b): Arrivals by Air from U.K. (Charter Flights), 1990 - 1992 & 1998**

<u>MONTH</u>	<u>(000's)</u>				<u>(000's)</u>				<u>%</u>			
	<u>1990</u>	<u>1991</u>	<u>1992</u>	<u>1998</u>	<u>1990</u>	<u>1991</u>	<u>1992</u>	<u>1998</u>	<u>1990</u>	<u>1991</u>	<u>1992</u>	<u>1998</u>
JANUARY	0.8	-	0.1	-	1.0	0.2	0.1	-	79.5	5.8	96.9	-
FEBRUARY	1.0	-	-	-	1.0	-	-	-	91.7	-	-	-
MARCH	1.3	0.1	-	-	1.3	0.1	-	-	96.9	90.2	-	-
APRIL	0.8	-	-	-	1.3	-	-	-	58.1	-	-	-
MAY	-	1.5	-	-	-	1.9	-	-	-	79.3	-	-
JUNE	-	1.8	-	-	-	2.5	-	-	-	74.2	-	-
JULY	0.3	2.1	0.1	-	0.4	2.4	0.1	-	90.8	89.0	93.3	-
AUGUST	0.2	2.7	-	-	0.3	3.1	-	-	65.1	87.6	-	-
SEPTEMBER	0.2	1.8	-	-	0.5	2.3	-	-	42.0	81.2	-	-
OCTOBER	-	1.0	-	-	-	1.8	-	0.1	-	57.0	-	58.0
NOVEMBER	0.2	-	-	0.7	0.5	0.1	-	0.7	52.6	6.1	-	99.3
DECEMBER	-	-	0.1	0.3	-	-	0.1	0.4	-	-	100.0	79.4
<b>TOTAL</b>	<b>4.7</b>	<b>9.1</b>	<b>0.4</b>	<b>1.1</b>	<b>6.2</b>	<b>12.1</b>	<b>0.4</b>	<b>1.2</b>	<b>75.9</b>	<b>75.2</b>	<b>96.9</b>	<b>90.1</b>

Notes: (i) Figures exclude MoD charter flights. No charter operations were recorded during 1993 - 1997.

(ii) The total yearly figures have been rounded off from the actual figures and need not necessarily equal the sum of the rounded off monthly figures.

**Table 4(c): Arrivals by Air from U.K. (Charter Flights), 1999 - 2002**

<u>MONTH</u>	<u>(000's)</u> <u>SEATS USED</u>				<u>(000's)</u> <u>SEATS OFFERED</u>				<u>%</u> <u>LOAD FACTOR</u>			
	<u>1999</u>	<u>2000</u>	<u>2001</u>	<u>2002</u>	<u>1999</u>	<u>2000</u>	<u>2001</u>	<u>2002</u>	<u>1999</u>	<u>2000</u>	<u>2001</u>	<u>2002</u>
JANUARY	-	0.1	-	-	0.1	0.1	-	-	5.6	82.6	100.0	100.0
FEBRUARY	-	-	-	-	-	-	-	-	-	-	-	100.0
MARCH	0.2	-	-	0.1	0.2	-	-	0.1	82.5	-	100.0	100.0
APRIL	0.1	0.2	0.1	0.2	0.1	0.3	0.3	0.2	56.9	65.8	42.4	100.0
MAY	-	-	-	0.1	-	-	-	0.1	-	-	-	100.0
JUNE	-	-	-	0.1	-	-	-	0.1	-	-	-	100.0
JULY	-	-	-	0.1	-	-	-	0.1	-	-	-	100.0
AUGUST	-	-	-	-	-	0.1	-	-	-	94.0	-	100.0
SEPTEMBER	-	0.1	-	-	0.2	0.1	-	-	15.6	56.9	-	100.0
OCTOBER	0.1	-	-	0.1	0.2	-	-	0.1	46.1	-	55.1	100.0
NOVEMBER	-	0.1	-	-	-	0.2	-	-	-	34.4	-	100.0
DECEMBER	0.1	-	-	0.1	0.2	-	-	0.1	73.3	67.5	-	100.0
<b>TOTAL</b>	<b>0.5</b>	<b>0.5</b>	<b>0.2</b>	<b>0.9</b>	<b>1.0</b>	<b>0.8</b>	<b>0.3</b>	<b>0.9</b>	<b>48.9</b>	<b>62.4</b>	<b>50.9</b>	<b>100.0</b>

Notes: (i) Figures exclude MoD charter flights.

(ii) The total yearly figures have been rounded off from the actual figures and need not necessarily equal the sum of the rounded off monthly figures.

**Table 4(d): Arrivals by Air from U.K. (Charter Flights), 2003 - 2005**

<u>MONTH</u>	<u>(000's)</u>			<u>(000's)</u>			<u>%</u>		
	<u>2003</u>	<u>2004</u>	<u>2005</u>	<u>2003</u>	<u>2004</u>	<u>2005</u>	<u>2003</u>	<u>2004</u>	<u>2005</u>
JANUARY	0.2	-	-	0.3	-	-	61.6	-	-
FEBRUARY	0.8	-	-	1.4	-	-	60.1	-	-
MARCH	0.2	-	-	0.5	0.1	-	41.2	17.0	-
APRIL	0.2	-	-	0.3	-	-	55.2	-	-
MAY	0.2	0.2	-	0.3	0.2	-	71.8	91.3	-
JUNE	-	-	0.2	-	-	0.2	-	-	90.9
JULY	-	0.2	-	-	0.3	-	-	63.5	-
AUGUST	-	-	-	-	-	-	-	-	-
SEPTEMBER	0.2	0.1	0.2	0.3	0.2	0.2	63.2	64.4	97.3
OCTOBER	0.2	0.1	0.1	0.2	0.1	0.2	87.6	100.0	88.1
NOVEMBER	-	0.2	0.2	-	0.2	0.2	-	93.6	97.3
DECEMBER	-	-	-	-	-	-	-	-	-
<b>TOTAL</b>	<b>2.0</b>	<b>0.9</b>	<b>0.8</b>	<b>3.3</b>	<b>1.2</b>	<b>0.8</b>	<b>59.9</b>	<b>74.4</b>	<b>93.7</b>

Notes: (i) Figures exclude MoD charter flights.

(ii) The total yearly figures have been rounded off from the actual figures and need not necessarily equal the sum of the rounded off monthly figures.



**Table 4(e): Arrivals by Air (Charter Flights), 2006**

<u>MONTH</u>	<u>(000's)</u> <u>SEATS USED</u>	<u>(000's)</u> <u>SEATS OFFERED</u>	<u>% (i)</u> <u>LOAD FACTOR</u>
January	-	-	-
February	-	-	-
March	-	-	-
April	-	-	-
May	-	-	-
June	0.2	0.2	69.4
July	0.2	0.3	84.4
August	0.2	0.2	97.3
September	-	-	-
October	-	-	-
November	-	-	-
December	-	-	-
<b>TOTAL</b>	<b>0.6</b>	<b>0.7</b>	<b>83.8</b>

Note: (i) Load factors are calculated on the basis of actual figures and exclude visitors in transit when applicable. The total yearly figures have been rounded off from the actual figures and need not necessarily equal the sum of the rounded off monthly figures.

**Table 5(a): Departures by Air to U.K. (Charter Flights), 1986 - 1989**

<u>MONTH</u>	<u>(000's)</u>				<u>(000's)</u>				<u>%</u>			
	<u>SEATS USED</u>				<u>SEATS OFFERED</u>				<u>LOAD FACTOR</u>			
	<u>1986</u>	<u>1987</u>	<u>1988</u>	<u>1989</u>	<u>1986</u>	<u>1987</u>	<u>1988</u>	<u>1989</u>	<u>1986</u>	<u>1987</u>	<u>1988</u>	<u>1989</u>
JANUARY	-	2.2	1.6	1.3	-	2.5	1.7	1.7	-	89.0	94.2	78.3
FEBRUARY	0.1	1.5	1.5	1.4	0.1	1.6	1.6	1.8	90.8	95.0	94.4	76.2
MARCH	-	1.0	1.7	0.3	-	1.2	1.8	0.4	-	83.1	93.9	79.1
APRIL	-	0.8	1.4	1.2	-	1.6	1.4	1.3	-	51.7	96.0	92.0
MAY	0.6	-	0.6	-	1.0	0.2	0.7	-	61.8	32.3	91.2	-
JUNE	0.7	1.2	0.2	-	0.8	1.3	0.3	-	85.6	95.1	90.4	-
JULY	0.5	0.9	0.4	-	0.6	1.0	0.5	-	87.7	86.0	80.6	-
AUGUST	0.7	1.0	0.6	-	0.7	1.0	0.7	-	97.8	93.9	96.0	-
SEPTEMBER	0.6	1.3	0.6	0.2	0.6	1.3	0.6	0.3	97.8	98.6	91.8	77.1
OCTOBER	0.6	1.0	0.6	0.1	0.9	1.0	0.7	0.1	74.0	95.5	91.0	67.2
NOVEMBER	-	1.6	0.9	0.6	-	1.3	1.2	1.2	-	81.5	78.6	47.7
DECEMBER	-	1.6	1.3	0.7	-	1.7	1.7	1.0	-	95.5	79.5	71.7
<b>TOTAL</b>	<b>4.0</b>	<b>13.9</b>	<b>11.5</b>	<b>5.8</b>	<b>4.9</b>	<b>16.1</b>	<b>12.7</b>	<b>7.8</b>	<b>81.5</b>	<b>89.8</b>	<b>88.4</b>	<b>74.5</b>

Notes: (i) Figures exclude MoD charter flights.

(ii) The total yearly figures have been rounded off from the actual figures and need not necessarily equal the sum of the rounded off monthly figures.

**Table 5(b): Departures by Air to U.K. (Charter Flights), 1990 - 1992 & 1998**

<u>MONTH</u>	<u>(000's)</u>				<u>(000's)</u>				<u>%</u>			
	<u>1990</u>	<u>1991</u>	<u>1992</u>	<u>1998</u>	<u>1990</u>	<u>1991</u>	<u>1992</u>	<u>1998</u>	<u>1990</u>	<u>1991</u>	<u>1992</u>	<u>1998</u>
JANUARY	0.8	0.1	0.1	-	1.0	0.2	0.1	-	77.3	64.6	93.1	-
FEBRUARY	0.9	-	-	-	1.0	-	-	-	83.6	-	-	-
MARCH	1.2	0.1	-	-	1.3	0.1	-	-	93.2	84.8	-	-
APRIL	1.0	-	-	-	1.3	-	-	-	77.9	-	-	-
MAY	-	0.9	-	-	-	1.9	-	-	-	47.6	-	-
JUNE	-	1.8	-	-	-	2.5	-	-	-	74.2	-	-
JULY	0.2	1.8	0.1	-	0.4	2.4	0.1	-	60.8	74.9	93.3	-
AUGUST	0.2	2.9	-	-	0.3	3.0	-	-	62.4	94.2	-	-
SEPTEMBER	0.2	2.0	-	-	0.5	2.3	-	-	45.1	87.6	-	-
OCTOBER	-	1.6	-	-	-	2.0	-	0.1	-	78.6	-	46.0
NOVEMBER	0.2	0.2	-	0.6	0.5	0.3	-	0.7	53.2	88.1	-	88.1
DECEMBER	-	-	0.3	0.3	-	-	0.2	0.4	-	-	75.4	57.3
<b>TOTAL</b>	<b>4.7</b>	<b>9.7</b>	<b>0.4</b>	<b>0.9</b>	<b>6.2</b>	<b>12.4</b>	<b>0.5</b>	<b>1.2</b>	<b>75.9</b>	<b>78.2</b>	<b>84.3</b>	<b>74.8</b>

Notes: (i) Figures exclude MoD charter flights. No charter operations were recorded during 1993 - 1997.

(ii) The total yearly figures have been rounded off from the actual figures and need not necessarily equal the sum of the rounded off monthly figures.

**Table 5(c): Departures by Air to U.K. (Charter Flights), 1999 - 2002**

<u>MONTH</u>	<u>(000's)</u>				<u>(000's)</u>				<u>%</u>			
	<u>SEATS USED</u>				<u>SEATS OFFERED</u>				<u>LOAD FACTOR</u>			
	<u>1999</u>	<u>2000</u>	<u>2001</u>	<u>2002</u>	<u>1999</u>	<u>2000</u>	<u>2001</u>	<u>2002</u>	<u>1999</u>	<u>2000</u>	<u>2001</u>	<u>2002</u>
JANUARY	0.1	0.1	-	-	0.1	0.1	-	-	81.9	82.6	-	-
FEBRUARY	-	-	-	-	-	-	-	-	-	-	-	-
MARCH	0.1	-	-	0.1	0.2	-	-	0.1	54.1	-	-	100.0
APRIL	0.1	0.2	0.1	0.2	0.1	0.3	0.3	0.2	100.0	65.8	42.4	100.0
MAY	-	-	-	0.1	-	-	-	0.1	-	-	-	100.0
JUNE	-	-	-	0.1	-	-	-	0.1	-	-	-	100.0
JULY	-	-	-	0.1	-	-	-	0.1	-	-	-	100.0
AUGUST	-	-	-	-	-	0.1	-	-	-	94.0	-	-
SEPTEMBER	-	0.1	-	-	0.2	0.1	-	-	15.0	56.9	-	-
OCTOBER	0.1	-	-	0.1	0.2	-	-	0.1	54.4	-	-	100.0
NOVEMBER	-	0.1	-	-	-	0.2	-	-	-	34.4	-	-
DECEMBER	-	-	-	0.1	0.2	-	-	0.1	-	67.5	-	53.8
<b>TOTAL</b>	<b>0.5</b>	<b>0.5</b>	<b>0.2</b>	<b>0.9</b>	<b>1.0</b>	<b>0.8</b>	<b>0.4</b>	<b>0.9</b>	<b>48.8</b>	<b>62.4</b>	<b>42.4</b>	<b>94.6</b>

Notes: (i) Figures exclude MoD charter flights.

(ii) The total yearly figures have been rounded off from the actual figures and need not necessarily equal the sum of the rounded off monthly figures.

**Table 5(d): Departures by Air to U.K. (Charter Flights), 2003 - 2005**

<u>MONTH</u>	<u>(000's)</u> <u>SEATS USED</u>			<u>(000's)</u> <u>SEATS OFFERED</u>			<u>%</u> <u>LOAD FACTOR</u>		
	<u>2003</u>	<u>2004</u>	<u>2005</u>	<u>2003</u>	<u>2004</u>	<u>2005</u>	<u>2003</u>	<u>2004</u>	<u>2005</u>
JANUARY	0.1	-	-	0.3	-	-	43.8	-	-
FEBRUARY	0.9	-	-	1.4	-	-	64.5	-	-
MARCH	0.2	-	-	0.5	0.1	-	42.0	25.0	-
APRIL	0.2	-	-	0.3	-	-	62.8	-	-
MAY	0.2	0.2	-	0.3	0.2	-	63.1	90.4	-
JUNE	-	-	0.2	-	-	0.2	-	-	80.8
JULY	-	0.2	-	-	0.3	-	-	59.0	-
AUGUST	-	-	-	-	-	-	-	-	-
SEPTEMBER	0.1	0.2	0.2	0.3	0.2	0.2	41.9	86.8	68.9
OCTOBER	0.2	0.1	0.2	0.2	0.1	0.2	85.4	100.0	98.8
NOVEMBER	-	0.2	0.2	-	0.2	0.2	-	94.1	89.0
DECEMBER	-	-	-	-	-	-	-	-	-
<b>TOTAL</b>	<b>1.9</b>	<b>0.9</b>	<b>0.7</b>	<b>3.3</b>	<b>1.2</b>	<b>0.8</b>	<b>58.2</b>	<b>78.1</b>	<b>83.5</b>

Notes: (i) Figures exclude MoD charter flights.

(ii) The total yearly figures have been rounded off from the actual figures and need not necessarily equal the sum of the rounded off monthly figures.

**Table 5(e): Departures by Air (Charter Flights), 2006**

<u>MONTH</u>	<u>(000's)</u> <u>SEATS USED</u>	<u>(000's)</u> <u>SEATS OFFERED</u>	<u>% (i)</u> <u>LOAD FACTOR</u>
January	-	-	-
February	-	-	-
March	-	-	-
April	-	-	-
May	-	-	-
June	0.2	0.2	95.0
July	0.2	0.3	85.8
August	0.1	0.2	63.5
September	-	-	-
October	-	-	-
November	-	-	-
December	-	-	-
<b>TOTAL</b>	<b>0.6</b>	<b>0.7</b>	<b>81.8</b>

Note: (i) Load factors are calculated on the basis of actual figures and exclude visitors in transit when applicable. The total yearly figures have been rounded off from the actual figures and need not necessarily equal the sum of the rounded off monthly figures.

**Table 6: Commercial Freight, Set Down/Picked Up, Gibraltar, 1982 - 2006**

(000's kgs)

<u>YEAR</u>	<u>SET DOWN</u>	<u>PICKED UP</u>
1982	481	44
1983	381	38
1984	333	36
1985	419	40
1986	523	59
1987	499	67
1988	599	40
1989	648	45
1990	797	95
1991	596	54
1992	476	64
1993	597	74
1994	518	49
1995	504	52
1996	406	58
1997	330	57
1998	406	69
1999	433	77
2000	419	74
2001	306	71
2002	289	60
2003	325	66
2004	320	61
2005	324	57
2006	296	52

Note: The figures relate to freight from/to all destinations.

**COMMERCIAL FREIGHT, 1982 - 2006**

