



GOVERNMENT OF GIBRALTAR

**AIR TRAFFIC
SURVEY
2002**

STATISTICS OFFICE

- CONTENTS -

A. B.		<u>PAGE</u>
	Preface	1
	Definitions	2
	Tables and Charts	3 - 42
<u>LIST OF TABLES</u>		
Table 1:	Arrivals/Departures by air from/to U.K. 1978 - 2002	3
Chart	Arrivals by Air from U.K. 1978 - 2002	4
Table 2: (a)	Arrivals by air from U.K. (Scheduled flights) 1978 - 1981	5
Table 2: (b)	Arrivals by air from U.K. (Scheduled flights) 1982 - 1985	6
Table 2: (c)	Arrivals by air from U.K. (Scheduled flights) 1986 - 1989	7
Table 2: (d)	Arrivals by air from U.K. (Scheduled flights) 1990 - 1993	8
Table 2: (e)	Arrivals by air from U.K. (Scheduled flights) 1994 - 1997	9
Table 2: (f)	Arrivals by air from U.K. (Scheduled flights) 1998 - 2001	10
Table 2: (g)	Arrivals by air from U.K. (Scheduled flights) 2002	11
Chart	Air Arrivals from U.K. (Scheduled flights) 2002	12
Chart	Arrivals by air from U.K. (Scheduled flights) 2002	13
Table 3: (a)	Departures by air to U.K. (Scheduled flights) 1978 - 1980	14
Table 3: (b)	Departures by air to U.K. (Scheduled flights) 1981 - 1983	15
Table 3: (c)	Departures by air to U.K. (Scheduled flights) 1984 - 1986	16
Table 3: (d)	Departures by air to U.K. (Scheduled flights) 1987 - 1989	17
Table 3: (e)	Departures by air to U.K. (Scheduled flights) 1990 - 1992	18
Table 3: (f)	Departures by air to U.K. (Scheduled flights) 1993 - 1995	19
Table 3: (g)	Departures by air to U.K. (Scheduled flights) 1996 - 1998	20
Table 3: (h)	Departures by air to U.K. (Scheduled flights) 1999 - 2001	21
Table 3: (i)	Departures by air to U.K. (Scheduled flights) 2002	22
Chart	Departures by air to U.K. (Scheduled flights) 2002	23
Chart	Departures by air to U.K. (Scheduled flights) 2002	24
Table 4: (a)	Arrivals by air from U.K. (Charter flights) 1982 - 1985	25
Table 4: (b)	Arrivals by air from U.K. (Charter flights) 1986 - 1989	26
Table 4: (c)	Arrivals by air from U.K. (Charter flights) 1990 - 1992, 1998	27
Table 4: (d)	Arrivals by air from U.K. (Charter flights) 1999 - 2001	28
Table 4: (e)	Arrivals by air (Charter flights) 2002	29
Table 5: (a)	Departures by air to U.K. (Charter flights) 1982 - 1985	30
Table 5: (b)	Departures by air to U.K. (Charter flights) 1986 - 1989	31
Table 5: (c)	Departures by air to U.K. (Charter flights) 1990 - 1992, 1998	32
Table 5: (d)	Departures by air to U.K. (Charter flights) 1999 - 2001	33
Table 5: (e)	Departures by air (Charter flights) 2002	34
Table 6: (a)	Arrivals by air from Morocco (Scheduled flights) 1993 - 1996	35
Table 6: (b)	Arrivals by air from Morocco (Scheduled flights) 1997 - 2000	36
Table 7: (a)	Departures by air to Morocco (Scheduled flights) 1993 - 1996	37
Table 7: (b)	Departures by air to Morocco (Scheduled flights) 1997 - 2000	38
Table 8	Commercial freight, Set down/picked up, Gibraltar 1975 - 2002	39
Chart	Commercial freight 1981 - 2002	40

A. PREFACE

The Statistics (Air Traffic Survey) Order 1971 requires that a report and summary of the findings of the Air Traffic Survey be laid before the House of Assembly. This is the twenty-seventh report and contains a summary of statistics collected for the years 1978 to 2002.

The report contains statistical data on air traffic operations between Gibraltar and other destinations for both scheduled and charter airlines. The report also includes some general data on commercial freight.

I must express my thanks to the Airlines and to Terminal Management Ltd for their continued co-operation in the conduct of this Survey.

FEBRUARY 2003

GOVERNMENT STATISTICIAN

B. DEFINITIONS

- (a) Passenger Load Factor: $\frac{\text{All seats used}}{\text{All seats offered (less in-transits)}} \times 100$
- (b) Revenue Load Factor: $\frac{\text{All seats used by "paying" passengers}}{\text{All seats offered (less in-transits)}} \times 100$
- (c) Scheduled Services: are those performed according to a published timetable including those supplementary thereto, and available for use by members of the public.
- (d) Charter Services: includes all air passengers transport flights, other than scheduled services and Ministry of Defence Charters.

Table 1: Arrivals/Departures by Air from/to UK 1978 -2002

YEAR	ARRIVALS (000's)						DEPARTURES (000's)					
	TOTAL		SCHEDULED		CHARTER		TOTAL		SCHEDULED		CHARTER	
	Seats Offered	Seats Used	Seats Offered	Seats Used	Seats Offered	Seats Used	Seats Offered	Seats Used	Seats Offered	Seats Used	Seats Offered	Seats Used
1978	49.3	42.2	34.0	29.4	15.3	12.8	48.9	42.9	33.6	29.8	15.3	13.1
1979	62.5	50.0	36.2	27.6	26.4	22.4	62.0	49.9	35.7	27.3	26.4	22.6
1980	62.8	50.0	30.2	22.9	32.7	27.1	62.7	50.9	30.0	23.1	32.7	27.8
1981	55.6	45.5	29.2	23.6	26.4	21.9	55.7	46.7	29.1	23.4	26.5	23.3
1982	60.0	47.5	35.6	27.0	24.4	20.5	60.0	47.6	35.6	26.7	24.3	20.9
1983	65.6	46.7	40.4	26.3	25.2	20.5	65.6	47.5	40.4	26.8	25.2	20.7
1984	61.3	50.3	34.6	27.4	26.7	22.9	61.2	51.0	34.6	27.6	26.7	23.4
1985	79.0	67.6	59.5	50.3	19.5	17.3	79.0	67.7	59.7	50.0	19.3	17.7
1986	101.7	83.2	96.9	79.1	4.8	4.1	101.8	84.1	96.9	80.1	4.9	4.0
1987	145.9	113.2	129.8	98.1	16.1	15.1	145.4	114.8	129.3	100.9	16.1	13.9
1988	208.7	151.2	196.0	139.6	12.7	11.6	208.3	156.1	195.6	144.6	12.7	11.5
1989	239.4	173.2	231.6	167.6	7.8	5.6	237.8	179.8	230.0	174.0	7.8	5.8
1990	172.0	141.5	165.8	136.8	6.2	4.7	175.1	148.5	168.9	143.8	6.2	4.7
1991	138.1	104.0	126.0	94.9	12.1	9.1	140.2	106.3	127.8	96.6	12.4	9.7
1992	127.4	98.1	127.0	97.7	0.4	0.4	128.2	101.0	127.7	100.5	0.5	0.4
1993	111.5	91.3	111.4	91.2	0.1	0.1	112.2	93.3	112.2	93.3	0.0	0.0
1994	106.4	85.2	106.4	85.2	0.0	0.0	107.1	86.9	207.2	86.9	0.0	0.0
1995	109.4	83.8	109.4	83.8	0.0	0.0	109.5	85.3	109.5	85.3	0.0	0.0
1996	98.7	78.1	98.7	78.1	0.0	0.0	98.1	78.2	98.1	78.2	0.0	0.0
1997	106.6	83.2	106.6	83.2	0.0	0.0	104.4	81.5	104.4	81.5	0.0	0.0
1998	121.5	92.0	120.4	91.0	1.2	1.1	120.2	91.0	119.0	90.1	1.2	0.9
1999	127.5	98.3	126.5	97.8	1.0	0.5	127.5	97.9	126.5	97.4	1.0	0.5
2000	139.4	104.3	138.6	103.7	0.8	0.5	138.9	107.1	138.1	106.6	0.8	0.5
2001	138.0	109.0	137.7	108.8	0.3	0.2	138.2	110.6	137.9	110.5	0.4	0.2
2002	147.2	116.6	146.3	115.7	0.9	0.9	147.0	114.8	146.1	114.0	0.9	0.9

Note: Charter flights as from 1998 include all destinations. The yearly totals have been rounded off from the actual figure and need not necessarily equal the sum of the rounded off sub-totals.

ARRIVALS BY AIR FROM UK - 1978 - 2002

(000's)

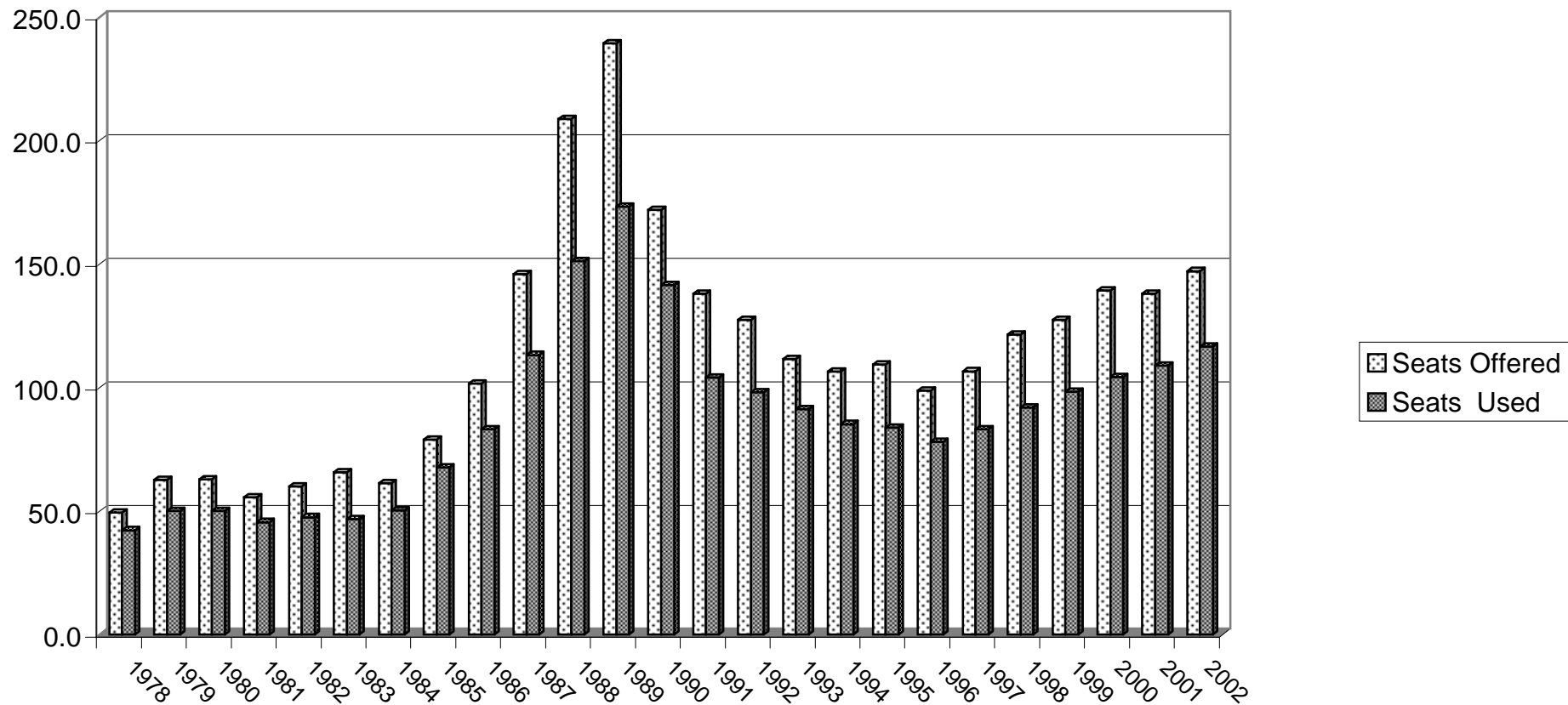


Table 2(a): Arrivals by air from U.K. (Scheduled Flights) 1978 -1981

MONTH	SEATS USED (000's)				SEATS OFFERED (000's)				LOAD FACTOR (%) *			
	1978	1979	1980	1981	1978	1979	1980	1981	1978	1979	1980	1981
JANUARY	1.9	1.6	1.6	1.5	2.6	2.6	2.8	2.1	71.2	62.6	57.3	70.6
FEBRUARY	1.7	1.5	1.5	1.5	2.3	2.3	2.7	1.9	75.5	65.1	57.8	81.1
MARCH	2.5	2.4	2.3	1.9	2.7	2.7	2.8	2.2	94.1	88.7	83.6	88.2
APRIL	2.4	2.5	1.7	2.2	2.9	3.2	2.4	2.7	84.7	77.7	70.3	79.3
MAY	2.5	2.6	2.0	1.9	2.8	3.4	2.5	2.7	89.0	76.6	79.2	67.7
JUNE	2.8	2.3	2.0	1.9	2.9	3.3	2.4	2.6	95.4	70.5	81.1	72.5
JULY	3.3	3.0	2.5	2.4	3.3	3.1	2.8	2.8	99.8	93.7	89.4	85.5
AUGUST	3.1	3.0	2.4	2.4	3.4	3.4	2.7	2.6	92.0	89.9	91.1	93.3
SEPTEMBER	2.8	2.6	1.7	1.9	3.1	3.4	2.5	2.7	90.8	76.9	67.4	71.9
OCTOBER	2.5	2.7	2.3	2.3	2.7	3.4	2.8	2.7	90.5	79.1	81.3	85.2
NOVEMBER	1.9	1.6	1.3	1.8	2.5	2.7	1.9	2.1	77.2	58.8	70.7	85.0
DECEMBER	2.0	1.8	1.6	1.9	2.8	2.7	1.9	2.1	68.7	66.3	82.6	91.4
TOTAL	29.4	27.6	22.9	23.6	34.0	36.2	30.2	29.2	86.4	76.2	76.0	80.7

Note: * All load factors are calculated on the basis of actual figures. The total yearly figure has been rounded off from the actual figure and need not necessarily equal the sum of the rounded off monthly figures.

Table 2(b): Arrivals by air from U.K. (Scheduled Flights) 1982 -1985

MONTH	SEATS USED (000's)				SEATS OFFERED (000's)				LOAD FACTOR (%)*			
	1982	1983	1984	1985	1982	1983	1984	1985	1982	1983	1984	1985
JANUARY	1.7	1.6	1.5	2.1	2.2	2.9	2.6	2.6	78.2	55.0	59.8	79.1
FEBRUARY	1.8	1.5	1.7	2.0	2.2	2.6	2.1	2.2	77.5	59.0	81.8	90.9
MARCH	2.0	2.1	2.1	3.0	2.1	3.0	2.4	3.2	95.9	70.3	87.2	97.0
APRIL	2.8	2.3	2.5	3.9	3.2	3.9	3.1	4.6	86.7	59.2	79.2	84.8
MAY	2.3	2.2	2.3	3.9	3.2	4.0	3.2	4.4	72.4	55.4	70.1	89.5
JUNE	2.3	2.4	2.2	4.3	3.3	3.9	3.3	5.0	70.9	60.3	68.9	86.4
JULY	2.7	3.0	2.9	5.4	3.5	4.0	3.4	5.7	77.8	74.4	86.1	95.2
AUGUST	2.8	2.8	2.8	5.8	3.3	4.0	3.2	6.5	82.4	70.5	86.7	89.2
SEPTEMBER	2.4	2.7	2.5	4.7	3.4	3.9	3.2	5.8	70.8	68.0	76.4	79.8
OCTOBER	2.3	2.3	2.6	5.1	3.4	3.6	3.2	5.8	69.0	63.0	79.3	86.7
NOVEMBER	1.9	1.6	2.0	4.6	2.9	2.2	2.4	6.3	65.2	71.1	85.0	73.4
DECEMBER	2.0	1.8	2.3	5.5	2.9	2.4	2.5	7.4	70.5	77.1	90.1	74.1
TOTAL	27.0	26.3	27.4	50.3	35.6	40.4	34.6	59.5	75.9	65.0	79.0	84.5

Note: * All load factors are calculated on the basis of actual figures. The total yearly figure has been rounded off from the actual figure and need not necessarily equal the sum of the rounded off monthly figures.

Table 2(c): Arrivals by air from U.K. (Scheduled Flights) 1986 -1989

MONTH	SEATS USED (000's)				SEATS OFFERED (000's)				LOAD FACTOR (%) *			
	1986	1987	1988	1989	1986	1987	1988	1989	1986	1987	1988	1989
JANUARY	4.1	4.7	7.0	9.7	7.0	7.8	12.7	18.0	58.6	60.3	55.2	53.9
FEBRUARY	4.4	5.0	8.4	10.4	5.9	6.6	11.3	14.4	75.2	76.2	74.9	72.4
MARCH	6.5	7.0	10.6	13.6	7.1	8.6	13.1	17.8	92.2	81.9	81.2	76.3
APRIL	5.6	7.6	10.4	11.9	7.2	8.4	14.2	17.6	77.4	90.0	73.7	67.7
MAY	7.4	9.0	13.1	14.9	8.7	11.4	17.2	19.3	84.8	79.3	76.3	77.2
JUNE	7.1	8.1	11.9	14.7	8.5	12.0	16.2	19.8	83.2	67.7	73.6	74.3
JULY	8.3	10.6	15.5	20.3	9.0	12.4	19.5	24.8	92.2	85.3	79.7	81.8
AUGUST	8.7	10.7	14.6	18.5	9.8	12.4	18.1	24.4	88.2	85.9	80.7	75.8
SEPTEMBER	7.6	8.7	14.0	16.5	8.9	11.6	18.0	22.2	85.0	74.8	77.9	74.3
OCTOBER	7.8	9.8	14.1	16.3	9.1	12.4	18.4	22.5	85.4	79.4	76.7	72.1
NOVEMBER	5.1	7.7	8.9	9.9	7.4	13.0	14.7	15.5	69.4	59.4	60.2	63.7
DECEMBER	6.5	8.7	10.9	10.9	8.2	12.9	16.3	15.3	78.6	67.4	67.3	71.5
TOTAL	79.1	97.6	139.4	167.6	96.9	129.5	189.7	231.6	81.6	75.2	73.5	72.4

Note: * All load factors are calculated on the basis of actual figures. The total yearly figure has been rounded off from the actual figure and need not necessarily equal the sum of the rounded off monthly figures.

Table 2(d): Arrivals by air from U.K. (Scheduled Flights) 1990 -1993

MONTH	SEATS USED (000's)				SEATS OFFERED (000's)				LOAD FACTOR (%) *			
	1990	1991	1992	1993	1990	1991	1992	1993	1990	1991	1992	1993
JANUARY	10.0	7.3	6.2	5.7	15.1	12.2	10.0	7.4	66.3	59.3	61.2	77.9
FEBRUARY	10.6	6.8	6.2	5.5	13.1	10.4	8.7	6.1	81.1	65.9	71.0	90.7
MARCH	12.9	7.4	7.7	7.1	14.8	9.2	9.2	7.5	87.1	81.3	83.0	95.9
APRIL	11.6	6.7	9.1	8.2	14.2	7.9	12.8	10.2	82.2	84.1	71.1	79.9
MAY	12.2	7.5	9.3	8.6	13.8	8.3	12.5	11.1	88.1	90.7	74.1	76.7
JUNE	12.1	7.9	9.6	8.6	13.7	9.5	12.0	11.1	88.3	83.5	79.8	77.7
JULY	13.9	10.8	11.5	10.1	14.6	12.3	12.5	10.9	95.5	88.1	92.2	92.3
AUGUST	12.5	9.7	9.8	8.8	14.3	11.9	12.6	11.0	87.2	81.3	77.4	79.9
SEPTEMBER	12.3	9.0	6.9	8.7	13.9	11.5	8.3	10.7	88.5	78.1	82.9	81.5
OCTOBER	11.5	8.6	9.0	7.9	14.5	11.7	11.9	11.2	79.2	74.0	75.6	70.5
NOVEMBER	8.4	6.7	6.6	6.1	11.6	11.1	8.8	7.3	72.2	60.4	74.7	84.0
DECEMBER	8.8	6.5	6.0	5.8	12.1	10.2	7.5	6.9	72.3	63.4	79.5	84.8
TOTAL	136.8	94.9	97.7	91.2	165.6	126.0	127.0	111.4	82.5	75.3	76.9	81.9

Note: * All load factors are calculated on the basis of actual figures. The total yearly figure has been rounded off from the actual figure and need not necessarily equal the sum of the rounded off monthly figures.

Table 2(e): Arrivals by air from U.K. (Scheduled Flights) 1994 -1997

MONTH	SEATS USED (000's)				SEATS OFFERED (000's)				LOAD FACTOR (%) *			
	1994	1995	1996	1997	1994	1995	1996	1997	1994	1995	1996	1997
JANUARY	5.1	4.1	4.6	4.6	7.1	7.8	7.7	7.9	71.3	53.0	53.9	57.8
FEBRUARY	5.0	5.6	5.5	5.2	5.9	6.6	7.7	6.3	83.5	84.2	68.9	83.0
MARCH	6.9	7.3	7.0	6.1	7.4	7.8	8.4	6.9	93.8	93.8	83.7	87.4
APRIL	6.7	7.7	6.3	5.4	9.4	10.1	8.5	6.6	71.0	76.0	74.3	82.3
MAY	8.3	8.1	7.7	8.6	9.9	10.3	9.0	9.9	83.2	78.1	86.4	86.4
JUNE	8.3	7.6	7.5	7.6	10.6	9.8	8.7	9.4	79.0	77.0	85.6	80.2
JULY	9.6	8.8	7.6	8.6	10.8	10.3	8.4	9.5	89.0	85.8	90.7	90.8
AUGUST	8.4	7.8	6.6	8.3	11.2	10.1	7.5	10.0	75.4	77.7	87.8	83.4
SEPTEMBER	8.3	7.2	7.2	8.1	10.2	9.3	8.4	10.7	80.8	77.7	86.4	75.6
OCTOBER	7.5	7.3	6.6	8.5	9.8	10.0	8.5	10.4	76.3	73.7	78.3	81.1
NOVEMBER	5.3	5.8	5.8	5.9	6.9	8.4	7.8	9.2	76.3	69.5	74.5	63.7
DECEMBER	5.9	6.5	5.7	6.4	7.2	8.9	8.1	9.8	82.4	73.8	70.7	65.8
TOTAL	85.2	83.8	78.1	83.2	106.4	109.4	98.7	106.6	80.0	76.7	79.1	78.0

Note: * All load factors are calculated on the basis of actual figures. The total yearly figure has been rounded off from the actual figure and need not necessarily equal the sum of the rounded off monthly figures.

Table 2(f): Arrivals by air from U.K. (Scheduled Flights) 1998 -2001

MONTH	SEATS USED (000's)				SEATS OFFERED (000's)				LOAD FACTOR (%) *			
	1998	1999	2000	2001	1998	1999	2000	2001	1998	1999	2000	2001
JANUARY	4.8	5.2	4.6	5.4	9.4	8.4	11.1	9.4	51.1	62.5	41.5	57.3
FEBRUARY	6.0	6.3	6.2	6.9	9.0	7.4	9.8	8.3	66.4	84.5	63.6	82.7
MARCH	7.6	8.1	8.7	8.6	9.8	8.8	10.7	9.8	78.1	91.4	81.3	87.9
APRIL	7.8	7.8	9.1	9.0	10.0	9.8	10.4	10.6	77.9	80.4	87.2	84.5
MAY	9.0	10.0	10.1	11.1	11.4	12.5	13.4	13.2	79.0	80.3	75.9	83.6
JUNE	8.0	9.8	9.7	11.0	10.9	11.8	12.4	12.8	73.6	82.7	78.3	85.7
JULY	9.3	10.7	10.8	11.7	10.6	12.4	13.4	13.5	87.3	85.8	80.8	86.6
AUGUST	9.2	9.2	10.1	10.5	11.2	11.6	12.9	13.4	82.2	79.2	78.1	78.3
SEPTEMBER	8.4	8.9	10.5	10.2	10.7	11.8	12.7	12.8	78.0	75.6	82.5	79.5
OCTOBER	8.2	8.3	10.0	9.5	11.2	11.7	13.4	13.4	73.1	70.3	74.6	70.9
NOVEMBER	6.5	6.5	7.0	7.5	8.4	9.7	9.1	10.6	78.0	67.0	76.2	71.1
DECEMBER	6.3	7.1	7.0	7.5	7.9	10.6	9.3	9.7	79.7	66.9	75.0	76.5
TOTAL	91.0	97.8	103.7	108.8	120.4	126.5	138.6	137.7	75.6	77.3	74.9	79.0

Note: * All load factors are calculated on the basis of actual figures. The total yearly figure has been rounded off from the actual figure and need not necessarily equal the sum of the rounded off monthly figures.

Table 2 (g): Arrivals by air from U. K. (Scheduled Flights) 2002

2002

MONTH	SEATS USED (000's)	SEATS OFFERED (000's)	LOAD FACTOR %
January	5.5	9.3	59.6
February	7.6	8.9	85.9
March	10.2	11.7	87.4
April	8.0	10.7	75.2
May	10.4	14.1	73.8
June	10.4	13.3	78.3
July	13.2	14.6	90.4
August	12.2	14.3	85.5
September	11.4	13.6	83.6
October	11.0	14.4	76.4
November	8.0	10.7	74.7
December	7.6	10.7	71.4
TOTAL	115.7	146.3	79.1

Note: Load factors are calculated on the basis of actual figures and exclude visitors in transit. The total yearly figures have been rounded off from the actual figures and need not necessarily equal the sum of the rounded off monthly figures.

ARRIVALS BY AIR FROM UK (SCHEDULED FLIGHTS) 2002

%
Load Factor

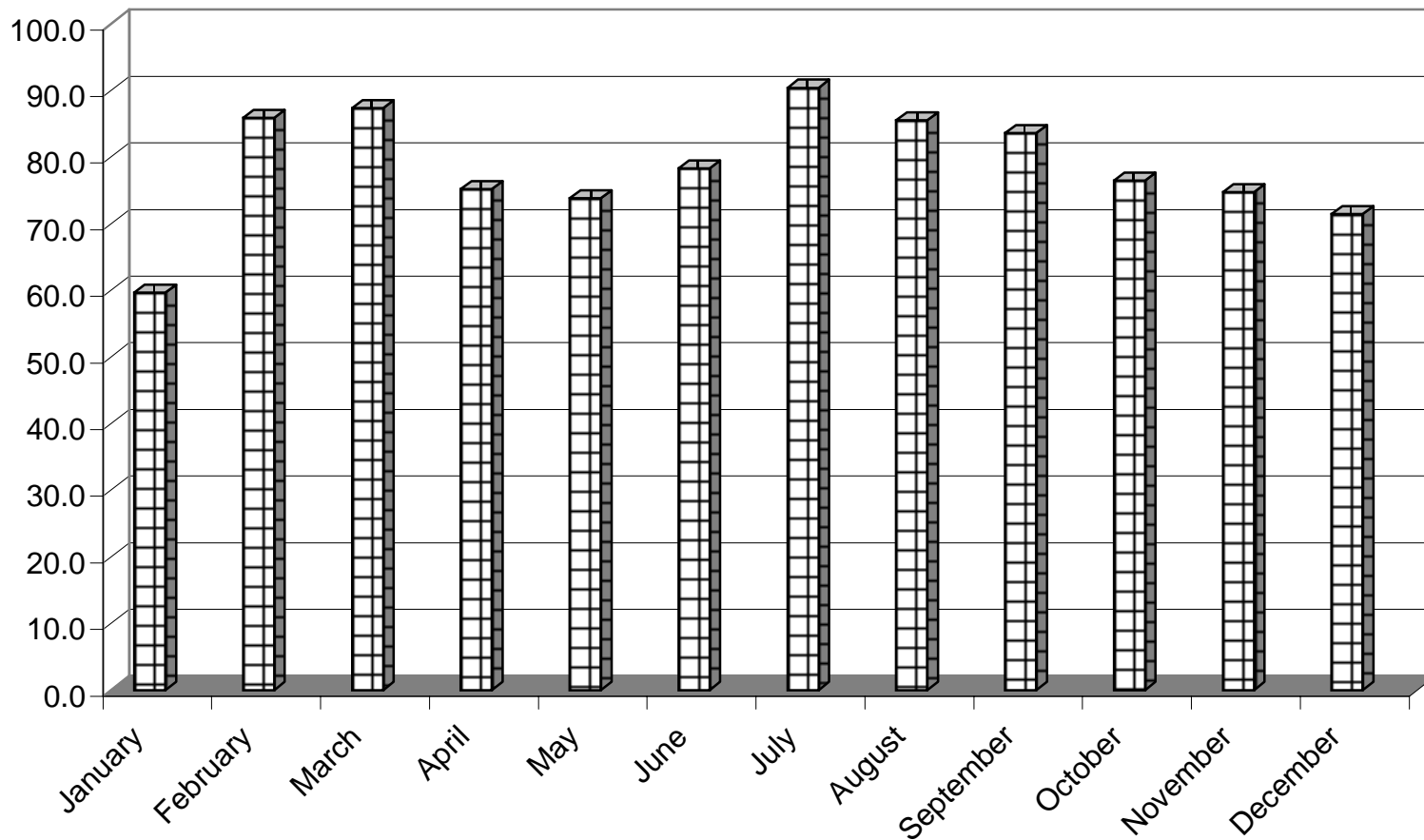


Table 3(a): Departures by air to U.K. (Scheduled Flights) 1978 -1980

MONTH	SEATS USED (000's)			SEATS OFFERED (000's)			LOAD FACTOR (%)		
	1978	1979	1980	1978	1979	1980	1978 * (**)	1979 * (**)	1980 * (**)
JANUARY	2.1	1.7	1.7	2.6	2.5	2.8	79.6 (76.0)	69.0 (63.5)	59.3 (56.6)
FEBRUARY	1.6	1.4	1.5	2.2	2.3	2.7	70.3 (63.0)	65.0 (53.9)	56.6 (52.3)
MARCH	2.3	2.4	2.1	2.6	2.6	2.8	89.2 (79.2)	91.4 (83.6)	75.7 (67.7)
APRIL	2.7	2.5	2.0	2.9	3.2	2.4	92.7 (89.3)	80.0 (76.9)	84.7 (81.9)
MAY	2.4	2.3	1.7	2.8	3.4	2.5	88.8 (84.0)	69.5 (65.2)	69.0 (64.0)
JUNE	2.7	2.3	2.0	2.9	3.2	2.3	92.1 (89.0)	69.8 (66.3)	84.4 (80.4)
JULY	3.0	2.5	2.1	3.2	3.1	2.7	93.7 (92.1)	79.3 (77.3)	77.1 (74.5)
AUGUST	3.2	3.3	2.6	3.4	3.4	2.7	95.2 (93.7)	97.3 (95.1)	96.9 (95.4)
SEPTEMBER	3.1	2.9	2.2	3.1	3.3	2.5	100.0 (97.2)	88.6 (85.2)	84.8 (82.1)
OCTOBER	2.7	2.8	2.4	2.7	3.3	2.8	99.6 (95.1)	82.9 (78.0)	87.5 (82.8)
NOVEMBER	2.1	1.7	1.3	2.4	2.7	1.9	85.1 (80.3)	63.9 (59.8)	70.6 (65.2)
DECEMBER	1.9	1.5	1.5	2.8	2.7	1.9	68.8 (66.1)	55.3 (52.0)	78.1 (75.4)
TOTAL	29.8	27.3	23.1	33.6	35.7	30.0	88.6 (84.6)	76.5 (72.6)	77.0 (73.2)

Note: * All load factors are calculated on the basis of actual figures. The total yearly figure has been rounded off from the actual figure and need not necessarily equal the sum of the rounded off monthly figures.

** Revenue load factors exclude non-paying passengers and are also calculated on actual figures.

Table 3(b): Departures by air to U.K. (Scheduled Flights) 1981 -1983

MONTH	SEATS USED (000's)			SEATS OFFERED (000's)			LOAD FACTOR (%)		
	1981	1982	1983	1981	1982	1983	1981 * (**)	1982 * (**)	1983 * (**)
JANUARY	1.6	1.9	1.7	2.1	2.2	2.9	75.9 (73.2)	85.2 (82.5)	61.2 (58.8)
FEBRUARY	1.5	1.6	1.5	1.9	2.3	2.6	79.3 (74.7)	70.9 (67.4)	56.6 (53.7)
MARCH	1.6	1.9	2.0	2.1	2.1	3.0	76.5 (70.9)	91.3 (86.2)	67.2 (61.7)
APRIL	2.2	2.6	2.6	2.7	3.2	3.9	83.0 (80.7)	82.1 (80.3)	65.8 (63.4)
MAY	1.8	2.1	2.0	2.7	3.2	4.0	64.4 (61.6)	67.0 (65.3)	48.6 (47.0)
JUNE	1.8	2.3	2.6	2.6	3.4	3.9	72.0 (69.3)	69.3 (67.4)	65.5 (64.2)
JULY	2.0	2.5	2.4	2.8	3.5	4.0	69.0 (65.9)	70.4 (69.3)	60.8 (59.2)
AUGUST	2.4	3.0	3.3	2.6	3.3	4.0	92.4 (89.9)	90.6 (88.6)	81.4 (79.5)
SEPTEMBER	2.4	2.8	3.1	2.7	3.4	3.9	89.2 (84.8)	83.1 (81.5)	78.3 (75.3)
OCTOBER	2.4	2.5	2.5	2.7	3.4	3.6	87.7 (84.0)	72.2 (68.2)	69.9 (66.6)
NOVEMBER	1.9	1.9	1.6	2.1	2.8	2.2	89.6 (84.3)	67.7 (64.2)	74.2 (71.1)
DECEMBER	1.8	1.6	1.5	2.1	2.8	2.4	86.1 (83.2)	55.2 (53.5)	63.3 (61.4)
TOTAL	23.4	26.7	26.8	29.1	35.6	40.4	80.2 (76.7)	75.1 (72.6)	66.2 (63.7)

Note: * All load factors are calculated on the basis of actual figures. The total yearly figure has been rounded off from the actual figure and need not necessarily equal the sum of the rounded off monthly figures.

** Revenue load factors exclude non-paying passengers and are also calculated on actual figures.

Table 3(c): Departures by air to U.K. (Scheduled Flights) 1984 -1986

MONTH	SEATS USED (000's)			SEATS OFFERED (000's)			LOAD FACTOR (%)		
	1984	1985	1986	1984	1985	1986	1984 * (**)	1985 * (**)	1986 * (**)
JANUARY	2.1	2.3	5.2	2.6	2.6	6.9	80.5 (77.6)	89.3 (87.0)	75.8 (74.2)
FEBRUARY	1.5	1.9	4.1	2.1	2.2	5.9	72.6 (69.7)	85.9 (82.8)	70.0 (66.1)
MARCH	2.0	2.8	6.0	2.4	3.2	7.1	85.2 (81.3)	89.9 (86.4)	84.1 (82.8)
APRIL	2.5	4.0	6.8	3.1	4.6	7.3	80.3 (77.6)	89.0 (87.3)	92.0 (90.5)
MAY	2.0	3.6	6.3	3.2	4.4	8.6	64.0 (61.7)	81.7 (79.9)	73.9 (72.4)
JUNE	2.4	4.3	7.5	3.2	5.0	8.6	74.3 (72.2)	85.5 (84.4)	87.1 (85.9)
JULY	2.3	4.3	6.9	3.3	5.6	9.0	69.6 (68.0)	76.3 (75.5)	76.6 (75.4)
AUGUST	3.1	6.2	9.2	3.3	6.5	9.8	94.1 (92.2)	94.3 (93.4)	93.4 (92.7)
SEPTEMBER	3.0	5.6	8.6	3.3	5.9	9.0	92.5 (89.5)	94.1 (92.4)	95.7 (94.1)
OCTOBER	2.6	5.2	8.5	3.2	5.9	9.1	80.5 (76.2)	89.2 (86.8)	93.0 (91.1)
NOVEMBER	2.1	5.4	6.2	2.4	6.3	7.4	87.9 (83.0)	85.6 (82.7)	83.8 (81.2)
DECEMBER	2.0	4.4	4.9	2.5	7.5	8.2	78.9 (77.4)	58.9 (58.0)	59.7 (58.5)
TOTAL	27.6	50.0	80.1	34.6	59.7	96.9	80.0 (77.2)	83.9 (82.1)	82.7 (81.1)

Note: * All load factors are calculated on the basis of actual figures. The total yearly figure has been rounded off from the actual figure and need not necessarily equal the sum of the rounded off monthly figures.

** Revenue load factors exclude non-paying passengers and are also calculated on actual figures.

Table 3(d): Departures by air to U.K. (Scheduled Flights) 1987 -1989

MONTH	SEATS USED (000's)			SEATS OFFERED (000's)			LOAD FACTOR (%)		
	1987	1988	1989	1987	1988	1989	1987 * (**)	1988 * (**)	1989 * (**)
JANUARY	6.4	9.0	12.2	7.9	12.7	18.0	80.6 (79.4)	70.6 (69.7)	67.7 (66.4)
FEBRUARY	4.7	8.2	10.2	6.6	11.2	14.4	70.8 (68.0)	73.1 (72.0)	70.9 (69.3)
MARCH	7.0	9.4	11.9	8.6	12.9	17.8	81.8 (78.1)	73.0 (71.5)	67.1 (65.0)
APRIL	7.5	12.2	13.6	8.3	14.4	17.5	90.2 (89.1)	85.0 (83.6)	77.3 (76.3)
MAY	8.7	11.6	13.3	11.2	16.8	18.7	77.8 (76.1)	68.9 (67.8)	70.7 (69.4)
JUNE	8.7	14.1	15.9	11.9	16.6	19.5	72.9 (71.4)	85.1 (83.8)	81.6 (80.5)
JULY	8.7	13.3	17.1	12.1	17.5	24.5	71.9 (70.6)	76.0 (75.3)	70.0 (69.0)
AUGUST	11.6	15.9	20.9	12.5	18.1	24.5	92.5 (91.7)	87.9 (87.3)	85.1 (84.4)
SEPTEMBER	10.6	15.4	18.4	11.7	17.8	22.0	90.3 (89.2)	86.2 (85.2)	83.5 (82.5)
OCTOBER	10.5	15.5	18.3	12.5	18.2	22.5	84.1 (82.5)	85.5 (84.4)	81.5 (80.1)
NOVEMBER	9.4	11.0	11.9	12.9	14.9	15.5	72.3 (71.1)	74.3 (72.4)	77.2 (75.3)
DECEMBER	6.9	8.7	10.2	13.0	16.1	15.0	55.6 (53.6)	53.8 (53.1)	68.2 (67.1)
TOTAL	100.7	144.3	174.0	129.2	187.2	230.0	77.8 (77.7)	77.1 (76.1)	75.7 (70.5)

Note: * All load factors are calculated on the basis of actual figures. The total yearly figure has been rounded off from the actual figure and need not necessarily equal the sum of the rounded off monthly figures.

** Revenue load factors exclude non-paying passengers and are also calculated on actual figures.

Table 3(e): Departures by air to U.K. (Scheduled Flights) 1990 -1992

MONTH	SEATS USED (000's)			SEATS OFFERED (000's)			LOAD FACTOR (%)		
	1990	1991	1992	1990	1991	1992	1990 * (**)	1991 * (**)	1992 * (**)
JANUARY	11.4	7.5	6.7	15.4	12.1	10.2	74.3 (73.0)	62.1 (60.6)	65.9 (64.8)
FEBRUARY	10.5	6.7	6.2	13.3	10.3	8.6	79.1 (77.2)	65.4 (63.2)	72.5 (70.2)
MARCH	12.3	6.2	7.0	14.4	8.7	9.2	85.0 (83.2)	71.3 (69.1)	76.0 (73.8)
APRIL	13.0	7.8	9.5	14.6	8.6	12.8	89.2 (87.9)	90.2 (87.6)	74.3 (73.2)
MAY	11.7	6.9	8.6	14.2	8.2	12.6	82.2 (80.6)	83.6 (81.0)	68.1 (66.8)
JUNE	13.2	7.9	9.8	14.1	9.8	12.2	93.3 (92.0)	80.5 (77.9)	80.4 (79.1)
JULY	12.5	9.2	9.8	14.6	12.4	12.5	86.0 (84.7)	73.8 (71.2)	78.5 (76.7)
AUGUST	13.7	11.0	11.5	15.2	12.3	12.8	90.5 (89.8)	89.5 (87.0)	89.7 (88.8)
SEPTEMBER	13.4	9.9	7.6	14.3	12.2	8.2	93.2 (91.7)	81.7 (78.7)	91.9 (90.2)
OCTOBER	13.8	10.1	10.5	14.7	12.1	11.9	93.5 (92.2)	83.3 (81.5)	87.7 (85.9)
NOVEMBER	9.6	7.3	7.8	12.0	10.9	9.0	80.5 (77.5)	67.0 (65.4)	86.0 (84.2)
DECEMBER	8.7	6.1	5.6	12.1	10.2	7.6	71.8 (70.2)	59.7 (58.5)	73.8 (72.5)
TOTAL	143.8	96.6	100.5	168.9	127.8	127.7	85.1 (83.6)	75.6 (73.3)	78.7 (77.2)

Note: * All load factors are calculated on the basis of actual figures. The total yearly figure has been rounded off from the actual figure and need not necessarily equal the sum of the rounded off monthly figures.

** Revenue load factors exclude non-paying passengers and are also calculated on actual figures.

Table 3(f): Departures by air to U.K. (Scheduled Flights) 1993 -1995

MONTH	SEATS USED (000's)			SEATS OFFERED (000's)			LOAD FACTOR (%)		
	1993	1994	1995	1993	1994	1995	1993 * (**)	1994 * (**)	1995 * (**)
JANUARY	6.1	5.8	5.5	7.6	7.1	7.8	80.5 (79.3)	81.9 (80.8)	70.8 (70.3)
FEBRUARY	5.4	5.0	5.2	6.4	6.2	6.9	83.8 (82.9)	81.7 (80.1)	75.1 (74.4)
MARCH	6.7	5.5	6.6	7.8	7.5	7.7	86.1 (84.7)	74.1 (72.9)	85.1 (84.6)
APRIL	8.3	7.6	8.3	10.0	9.3	10.3	82.3 (81.0)	81.9 (81.2)	80.5 (80.3)
MAY	7.9	7.6	7.3	11.1	10.1	10.4	71.3 (69.8)	76.3 (75.2)	69.8 (69.4)
JUNE	9.4	8.7	8.2	11.1	10.4	9.9	84.1 (82.9)	84.8 (83.7)	82.5 (82.0)
JULY	8.7	8.4	7.9	11.3	10.9	10.3	77.5 (76.7)	77.0 (77.5)	76.5 (76.0)
AUGUST	10.0	9.7	8.5	10.9	10.9	10.3	91.4 (90.5)	89.0 (88.3)	82.8 (82.4)
SEPTEMBER	9.7	9.3	8.4	10.5	10.2	9.6	92.2 (91.0)	91.8 (91.2)	87.6 (87.0)
OCTOBER	9.5	8.9	8.3	11.1	10.2	9.9	86.0 (85.0)	88.3 (87.5)	83.0 (82.4)
NOVEMBER	6.5	5.6	6.3	7.3	6.8	8.5	88.8 (87.3)	83.3 (82.4)	73.8 (73.1)
DECEMBER	5.1	4.8	4.8	6.9	7.2	7.9	73.2 (72.4)	67.3 (66.9)	61.5 (60.8)
TOTAL	93.3	86.9	85.3	112.2	107.1	109.5	83.2 (82.0)	81.2 (80.3)	77.8 (77.3)

Note: * All load factors are calculated on the basis of actual figures. The total yearly figure has been rounded off from the actual figure and need not necessarily equal the sum of the rounded off monthly figures.

** Revenue load factors exclude non-paying passengers and are also calculated on actual figures.

Table 3(g): Departures by air to U.K. (Scheduled Flights) 1996 -1998

MONTH	SEATS USED (000's)			SEATS OFFERED (000's)			LOAD FACTOR (%)		
	1996	1997	1998	1996	1997	1998	1996 * (**)	1997 * (**)	1998 * (**)
JANUARY	5.3	4.7	6.0	7.7	6.8	9.5	69.4 (69.0)	68.5 (67.4)	63.1 (62.7)
FEBRUARY	5.6	5.1	5.3	8.2	6.4	8.7	68.1 (67.6)	79.4 (78.3)	60.7 (60.2)
MARCH	6.3	5.2	6.7	8.1	6.8	9.9	77.1 (76.4)	76.4 (75.5)	67.9 (67.9)
APRIL	7.0	6.1	8.2	8.7	6.7	10.0	81.0 (80.7)	90.1 (89.7)	81.9 (81.7)
MAY	7.0	7.7	8.0	8.7	9.6	11.2	79.9 (79.5)	79.8 (79.2)	71.3 (70.9)
JUNE	8.1	7.9	8.1	9.1	9.5	10.8	89.5 (89.1)	83.2 (83.0)	74.6 (74.2)
JULY	6.8	7.5	7.7	8.6	9.7	10.3	79.1 (79.0)	77.0 (76.7)	74.5 (74.3)
AUGUST	6.8	8.7	9.9	7.6	9.5	11.1	89.7 (89.5)	91.7 (91.4)	89.5 (89.4)
SEPTEMBER	8.0	8.8	9.2	8.5	10.5	10.4	93.5 (93.2)	83.8 (83.5)	88.5 (88.4)
OCTOBER	7.3	8.6	8.9	8.3	9.6	11.0	88.6 (88.2)	90.0 (89.6)	80.5 (80.3)
NOVEMBER	5.9	6.5	7.1	7.6	9.2	8.3	77.7 (77.1)	70.3 (70.0)	84.9 (84.4)
DECEMBER	4.1	4.7	5.0	7.0	10.1	7.6	58.8 (58.4)	46.3 (46.1)	66.2 (65.5)
TOTAL	78.2	81.5	90.1	98.1	104.4	119.0	79.6 (79.0)	78.1 (77.6)	75.7 (75.4)

Note: * All load factors are calculated on the basis of actual figures. The total yearly figure has been rounded off from the actual figure and need not necessarily equal the sum of the rounded off monthly figures.

** Revenue load factors exclude non-paying passengers and are also calculated on actual figures.

AIR ARRIVALS FROM UK (SCHEDULED FLIGHTS) - 2002

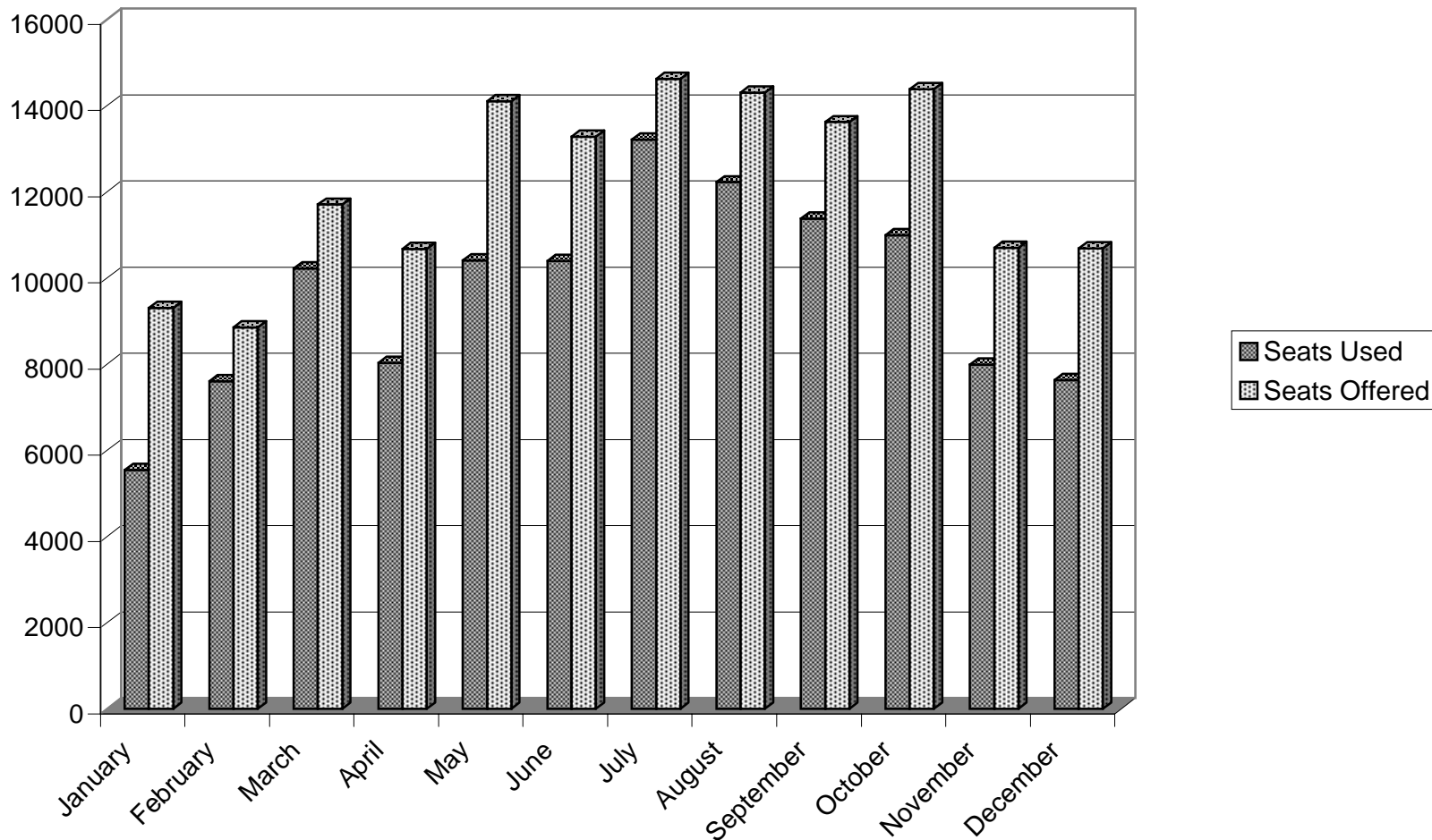


Table 3(h): Departures by air to U.K. (Scheduled Flights) 1999 -2001

MONTH	SEATS USED (000's)			SEATS OFFERED (000's)			LOAD FACTOR (%)		
	1999	2000	2001	1999	2000	2001	1999 * (**)	2000 * (**)	2001 * (**)
JANUARY	6.3	6.5	6.6	8.5	11.1	9.4	74.1 (73.9)	58.8 (58.7)	70.2 (70.2)
FEBRUARY	5.7	6.0	6.6	7.5	9.8	8.4	75.1 (74.3)	61.5 (61.4)	78.9 (78.9)
MARCH	7.0	8.0	7.9	8.5	10.6	9.8	82.8 (82.7)	75.2 (74.9)	81.0 (81.0)
APRIL	8.7	9.1	9.4	9.8	10.1	10.6	89.0 (88.5)	89.4 (89.3)	87.9 (87.9)
MAY	8.9	9.9	10.2	12.5	13.3	13.3	71.0 (71.0)	74.5 (74.5)	76.7 (76.7)
JUNE	10.0	10.5	11.0	11.6	12.4	12.9	86.3 (86.3)	84.9 (84.8)	85.7 (85.7)
JULY	9.4	9.8	10.3	12.5	13.4	13.5	75.7 (75.7)	73.0 (72.9)	76.0 (76.0)
AUGUST	9.6	10.6	11.5	11.4	12.7	13.4	84.7 (84.7)	83.6 (83.5)	85.4 (85.4)
SEPTEMBER	10.2	11.7	11.1	11.8	12.8	12.8	86.3 (86.3)	91.4 (91.2)	86.6 (86.6)
OCTOBER	9.0	11.1	11.3	11.8	13.2	13.5	76.4 (76.4)	84.2 (84.1)	83.9 (83.9)
NOVEMBER	7.4	7.5	8.5	10.0	9.2	10.7	74.4 (74.4)	82.1 (82.0)	79.9 (79.9)
DECEMBER	5.1	5.7	6.0	10.6	9.3	9.5	48.0 (47.9)	61.3 (60.8)	63.2 (63.2)
TOTAL	97.4	106.6	110.5	126.5	138.1	137.9	77.0 (76.9)	77.2 (77.1)	80.1 (80.1)

Note: * All load factors are calculated on the basis of actual figures. The total yearly figure has been rounded off from the actual figure and need not necessarily equal the sum of the rounded off monthly figures.

** Revenue load factors exclude non-paying passengers and are also calculated on actual figures.

Table 3 (i): Departures by air to U. K. (Scheduled Flights) 2002

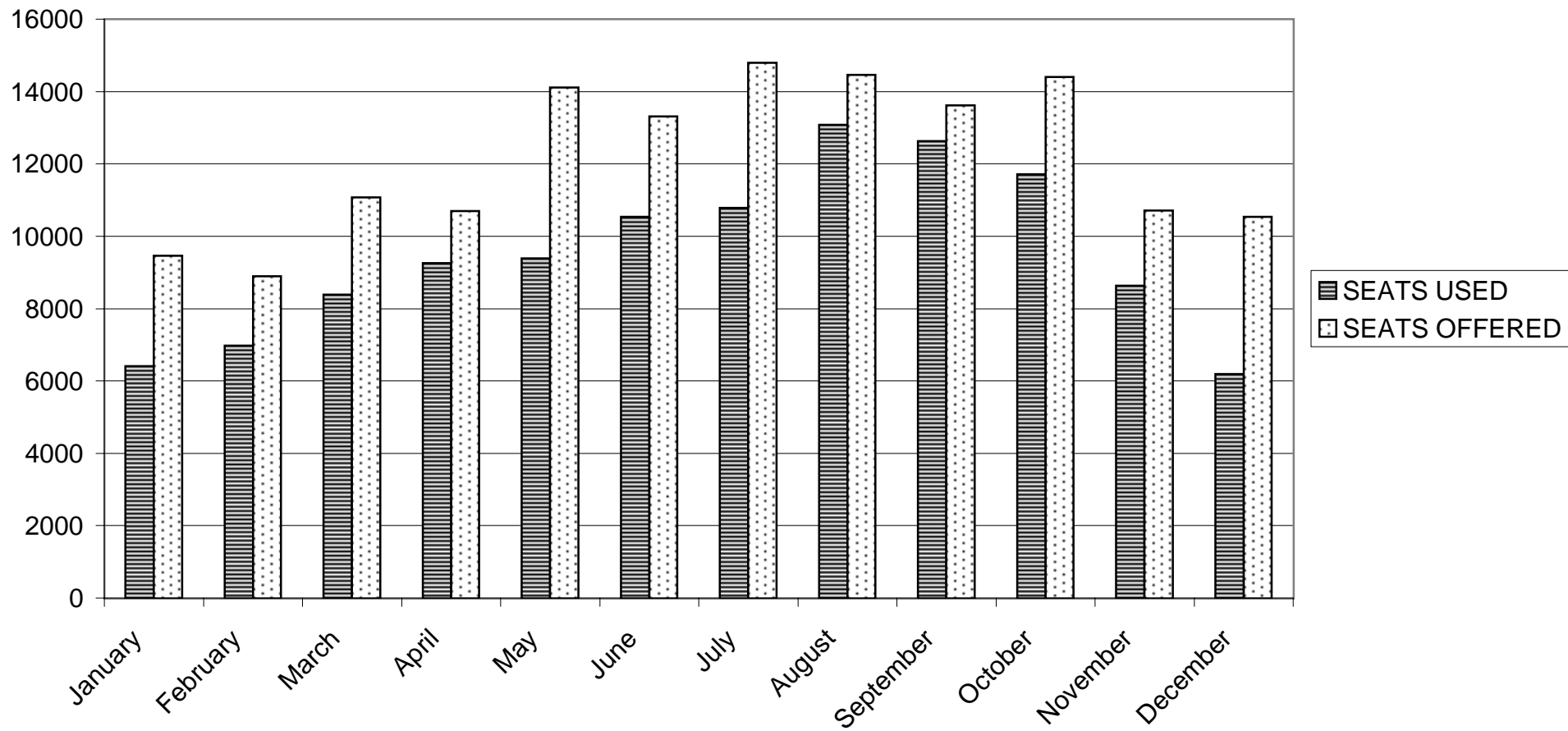
2002

MONTH	SEATS USED (000's)	SEATS OFFERED (000's)	LOAD FACTOR %	
			(1)	(2)
January	6.4	9.5	67.7	67.7
February	7.0	8.9	78.4	78.4
March	8.4	11.1	75.7	75.7
April	9.3	10.7	86.5	86.5
May	9.4	14.1	66.5	66.5
June	10.5	13.3	79.1	79.1
July	10.8	14.8	72.9	72.9
August	13.1	14.5	90.5	90.5
September	12.6	13.6	92.7	92.7
October	11.7	14.4	81.3	81.3
November	8.6	10.7	80.6	80.6
December	6.2	10.5	58.8	58.8
TOTAL	114.0	146.1	78.0	78.0

Notes:

- (1) Load factors are calculated on the basis of actual figures and exclude visitors in transit. The total yearly figures have been rounded off from the actual figures and need not necessarily equal the sum of the rounded off monthly figures.
- (2) Revenue load factors exclude non-paying passengers from the Seats Used figures and are also calculated on the basis of actual figures.

DEPARTURES BY AIR TO UK (SCHEDULED FLIGHTS) - 2002



DEPARTURES BY AIR TO UK (SCHEDULED FLIGHTS) 2002

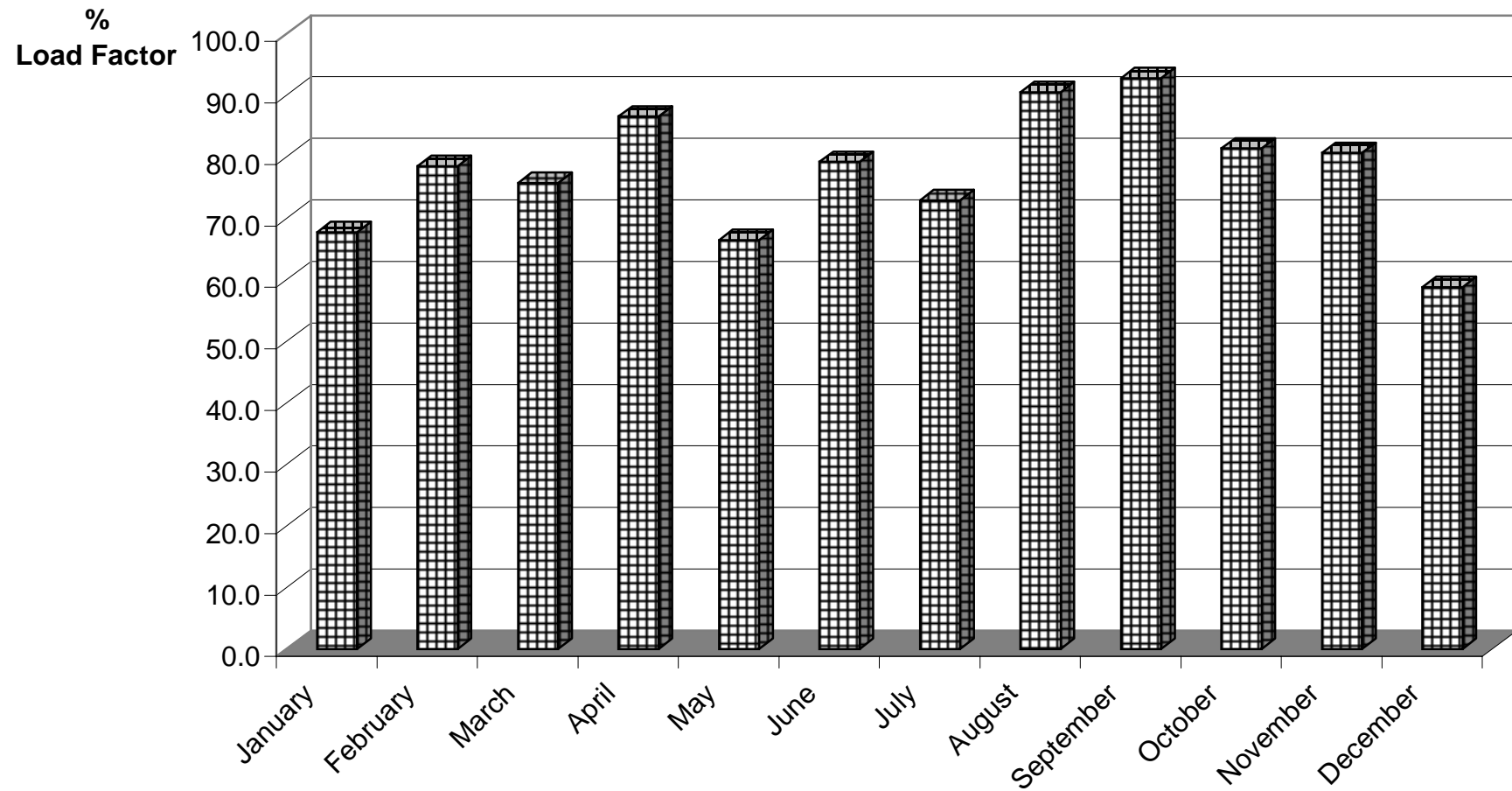


Table 4(a): Arrivals by air from U.K. (Charter Flights) 1982 -1985 *,**

MONTH	SEATS USED (000's)				SEATS OFFERED (000's)				LOAD FACTOR (%)			
	1982	1983	1984	1985	1982	1983	1984	1985	1982	1983	1984	1985
JANUARY	1.2	0.9	1.2	0.7	1.6	1.2	1.7	0.9	74.6	79.5	71.7	82.5
FEBRUARY	1.1	1.0	1.1	1.0	1.2	1.0	1.2	1.0	90.2	94.0	97.7	99.9
MARCH	1.4	1.2	1.8	1.5	1.4	1.2	1.9	1.6	97.3	94.7	92.7	95.0
APRIL	1.8	1.5	1.7	1.7	2.1	2.2	1.9	1.8	86.6	69.2	89.7	92.9
MAY	2.0	1.9	2.2	2.0	2.5	2.4	2.7	2.3	80.6	79.0	80.7	88.1
JUNE	2.0	1.8	2.2	1.9	2.6	2.2	2.7	2.2	79.5	82.7	82.0	88.4
JULY	3.0	2.5	3.1	2.6	3.2	2.8	3.4	2.9	91.4	87.5	91.0	90.6
AUGUST	2.4	2.3	2.6	2.0	3.1	2.5	2.7	2.1	76.2	93.4	94.1	93.9
SEPTEMBER	2.0	2.2	2.5	2.4	2.2	2.6	3.0	2.5	89.7	85.5	85.4	93.1
OCTOBER	1.4	1.7	2.2	1.5	1.9	2.7	2.9	2.2	76.0	63.8	76.6	68.1
NOVEMBER	1.1	1.5	1.4	-	1.3	2.0	1.6	-	84.9	74.9	89.3	-
DECEMBER	1.1	2.0	0.9	-	1.3	2.4	1.0	-	87.8	83.1	87.5	-
TOTAL	20.5	20.5	22.9	17.3	24.4	25.2	26.7	19.5	84.0	81.3	86.0	88.9

Notes: * Regular charter operations commenced in April 1977. Figures exclude MoD charter flights.

**The total yearly figures have been rounded off from the actual figures and need not necessarily equal the sum of the rounded off monthly figures.

Table 4(b): Arrivals by air from U.K. (Charter Flights) 1986 -1989 *,**

MONTH	SEATS USED (000's)				SEATS OFFERED (000's)				LOAD FACTOR (%)			
	1986	1987	1988	1989	1986	1987	1988	1989	1986	1987	1988	1989
JANUARY	-	2.3	1.6	1.2	-	2.5	1.7	1.7	-	92.2	93.4	72.4
FEBRUARY	0.1	1.5	1.5	1.4	0.1	1.6	1.6	1.8	90.8	97.1	97.5	77.9
MARCH	-	1.2	1.8	0.4	-	1.2	1.8	0.4	-	95.7	96.7	84.7
APRIL	-	1.6	1.2	0.8	-	1.6	1.4	1.3	-	97.6	80.5	61.4
MAY	0.8	0.1	0.6	-	1.0	0.2	0.7	-	83.8	61.9	90.2	-
JUNE	0.7	1.2	0.2	-	0.8	1.3	0.3	-	84.5	88.8	85.7	-
JULY	0.6	1.0	0.5	-	0.6	1.0	0.5	-	94.9	98.0	96.7	-
AUGUST	0.7	1.0	0.6	-	0.7	1.0	0.7	-	96.8	97.1	95.4	-
SEPTEMBER	0.6	1.3	0.5	0.2	0.6	1.3	0.6	0.2	95.4	98.4	74.3	77.9
OCTOBER	0.6	0.8	0.6	-	0.9	1.0	0.7	0.1	66.1	75.4	95.2	-
NOVEMBER	-	1.5	1.1	0.8	-	1.6	1.2	1.2	-	98.3	96.9	66.0
DECEMBER	-	1.6	1.5	0.8	-	1.7	1.7	1.0	-	96.0	86.5	80.9
TOTAL	4.1	15.1	11.7	5.6	4.8	16.0	12.9	7.8	84.1	94.4	90.7	71.7

Notes: * Regular charter operations commenced in April 1977. Figures exclude MoD charter flights.

**The total yearly figures have been rounded off from the actual figures and need not necessarily equal the sum of the rounded off monthly figures.

Table 4(c): Arrivals by air from U.K. (Charter Flights) 1990 -1992,1998 *,**

MONTH	SEATS USED (000's)				SEATS OFFERED (000's)				LOAD FACTOR (%)			
	1990	1991	1992	1998	1990	1991	1992	1998	1990	1991	1992	1998
JANUARY	0.8	-	0.1	-	1.0	0.2	0.1	-	79.5	5.8	96.9	-
FEBRUARY	1.0	-	-	-	1.0	-	-	-	91.7	-	-	-
MARCH	1.3	0.1	-	-	1.3	0.1	-	-	96.9	90.2	-	-
APRIL	0.8	-	-	-	1.3	-	-	-	58.1	-	-	-
MAY	-	1.5	-	-	-	1.9	-	-	-	79.3	-	-
JUNE	-	1.8	-	-	-	2.5	-	-	-	74.2	-	-
JULY	0.3	2.1	0.1	-	0.4	2.4	0.1	-	90.8	89.0	93.3	-
AUGUST	0.2	2.7	-	-	0.3	3.1	-	-	65.1	87.6	-	-
SEPTEMBER	0.2	1.8	-	-	0.5	2.3	-	-	42.0	81.2	-	-
OCTOBER	-	1.0	-	-	-	1.8	-	0.1	-	57.0	-	58.0
NOVEMBER	0.2	-	-	0.7	0.5	0.1	-	0.7	52.6	6.1	-	99.3
DECEMBER	-	-	0.1	0.3	-	-	0.1	0.4	-	-	100.0	79.4
TOTAL	4.8	9.0	0.3	1.1	6.3	12.0	0.3	1.2	75.9	75.2	96.9	90.1

Notes: * Figures exclude MoD charter flights. No charter operations were recorded during 1993 - 1997.

**The total yearly figures have been rounded off from the actual figures and need not necessarily equal the sum of the rounded off monthly figures.

Table 4(d): Arrivals by air from U.K. (Charter Flights) 1999 - 2001 *,**

MONTH	SEATS USED (000's)			SEATS OFFERED (000's)			LOAD FACTOR (%)		
	1999	2000	2001	1999	2000	2001	1999	2000	2001
JANUARY	-	0.1	-	0.1	0.1	-	5.6	82.6	100.0
FEBRUARY	-	-	-	-	-	-	-	-	-
MARCH	0.2	-	-	0.2	-	-	82.5	-	100.0
APRIL	0.1	0.2	0.1	0.1	0.3	0.3	56.9	65.8	42.4
MAY	-	-	-	-	-	-	-	-	-
JUNE	-	-	-	-	-	-	-	-	-
JULY	-	-	-	-	-	-	-	-	-
AUGUST	-	-	-	-	0.1	-	-	94.0	-
SEPTEMBER	-	0.1	-	0.2	0.1	-	15.6	56.9	-
OCTOBER	0.1	-	-	0.2	-	-	46.1	-	55.1
NOVEMBER	-	0.1	-	-	0.2	-	-	34.4	-
DECEMBER	0.1	-	-	0.2	-	-	73.3	67.5	-
TOTAL	0.5	0.5	0.2	1.0	0.8	0.4	48.9	62.4	50.9

Notes: * Figures exclude MoD charter flights.

**The total yearly figures have been rounded off from the actual figures and need not necessarily equal the sum of the rounded off figures.

Table 4 (e): Arrivals by Air (Charter Flights) 2002

2002

MONTH	SEATS USED (000's)	SEATS OFFERED (000's)	LOAD FACTOR (%)
January	0.0	0.0	100.0
February	0.0	0.0	100.0
March	0.1	0.1	100.0
April	0.2	0.2	100.0
May	0.1	0.1	100.0
June	0.1	0.1	100.0
July	0.1	0.1	100.0
August	0.0	0.0	100.0
September	0.0	0.0	100.0
October	0.1	0.1	100.0
November	0.0	0.0	100.0
December	0.1	0.1	100.0
TOTAL	0.9	0.9	100.0

Note: Load factors are calculated on the basis of actual figures and exclude visitors in transit. The total yearly figures have been rounded off from the actual figures and need not necessarily equal the sum of the rounded off monthly figures.

Table 5(a): Departures by air to U.K. (Charter Flights) 1982 -1985 *,**

MONTH	SEATS USED (000's)				SEATS OFFERED (000's)				LOAD FACTOR (%) **			
	1982	1983	1984	1985	1982	1983	1984	1985	1982	1983	1984	1985
JANUARY	1.2	1.0	1.5	0.7	1.6	1.2	1.7	0.9	74.8	88.5	89.0	85.0
FEBRUARY	1.1	0.9	1.0	0.9	1.2	1.0	1.2	1.0	89.6	83.7	86.3	89.7
MARCH	1.4	1.2	1.8	1.5	1.4	1.2	1.9	1.6	96.9	97.0	93.0	96.0
APRIL	1.8	1.5	1.8	1.7	2.1	2.2	1.9	1.8	89.2	69.2	94.5	96.0
MAY	1.9	1.6	1.7	1.7	2.5	2.4	2.7	2.3	78.6	66.7	63.7	72.6
JUNE	2.1	1.9	2.2	1.9	2.5	2.2	2.7	2.2	82.1	83.7	83.0	89.8
JULY	2.6	2.3	3.0	2.5	3.2	2.8	3.4	2.8	80.4	83.2	86.5	87.9
AUGUST	2.7	2.3	2.7	2.0	3.1	2.5	2.7	2.1	86.3	93.2	98.3	98.0
SEPTEMBER	2.0	2.5	2.7	2.5	2.2	2.6	3.0	2.5	91.8	97.5	90.7	97.5
OCTOBER	1.8	2.3	2.7	2.2	1.9	2.7	2.9	2.2	97.1	83.1	95.5	98.1
NOVEMBER	1.2	1.5	1.5	-	1.3	2.0	1.6	-	90.1	74.9	93.3	-
DECEMBER	1.1	1.7	0.8	-	1.3	2.4	1.0	-	86.9	72.2	80.1	-
TOTAL	20.9	20.7	23.4	17.6	24.3	25.2	26.7	19.4	86.1	82.2	87.8	91.2

Notes: * Regular charter operations commenced in April 1977. Figures exclude MoD charter flights.

**The total yearly figures have been rounded off from the actual figures and need not necessarily equal the sum of the rounded off monthly figures.

Table 5(b): Departures by air to U.K. (Charter Flights) 1986 -1989 *

MONTH	SEATS USED (000's)				SEATS OFFERED (000's)				LOAD FACTOR (%) **			
	1986	1987	1988	1989	1986	1987	1988	1989	1986	1987	1988	1989
JANUARY	-	2.2	1.6	1.3	-	2.5	1.7	1.7	-	89.0	94.2	78.3
FEBRUARY	0.1	1.5	1.5	1.4	0.1	1.6	1.6	1.8	90.8	95.0	94.4	76.2
MARCH	-	1.0	1.7	0.3	-	1.2	1.8	0.4	-	83.1	93.9	79.1
APRIL	-	0.8	1.4	1.2	-	1.6	1.4	1.3	-	51.7	96.0	92.0
MAY	0.6	-	0.6	-	1.0	0.2	0.7	-	61.8	32.3	91.2	-
JUNE	0.7	1.2	0.2	-	0.8	1.3	0.3	-	85.6	95.1	90.4	-
JULY	0.5	0.9	0.4	-	0.6	1.0	0.5	-	87.7	86.0	80.6	-
AUGUST	0.7	1.0	0.6	-	0.7	1.0	0.7	-	97.8	93.9	96.0	-
SEPTEMBER	0.6	1.3	0.6	0.2	0.6	1.3	0.6	0.3	97.8	98.6	91.8	77.1
OCTOBER	0.6	1.0	0.6	0.1	0.9	1.0	0.7	0.1	74.0	95.5	91.0	67.2
NOVEMBER	-	1.6	0.9	0.6	-	1.3	1.2	1.2	-	81.5	78.6	47.7
DECEMBER	-	1.6	1.3	0.7	-	1.7	1.7	1.0	-	95.5	79.5	71.7
TOTAL	4.0	14.1	11.4	5.8	4.9	15.8	12.9	7.8	81.5	89.8	88.4	74.5

Notes: * Regular charter operations commenced in April 1977. Figures exclude MoD charter flights.

**The total yearly figures have been rounded off from the actual figures and need not necessarily equal the sum of the rounded off monthly figures.

Table 5(c): Departures by air to U.K. (Charter Flights) 1990 -1992,1998 *

MONTH	SEATS USED (000's)				SEATS OFFERED (000's)				LOAD FACTOR (%) **			
	1990	1991	1992	1998	1990	1991	1992	1998	1990	1991	1992	1998
JANUARY	0.8	0.1	0.1	-	1.0	0.2	0.1	-	77.3	64.6	93.1	-
FEBRUARY	0.9	-	-	-	1.0	-	-	-	83.6	-	-	-
MARCH	1.2	0.1	-	-	1.3	0.1	-	-	93.2	84.8	-	-
APRIL	1.0	-	-	-	1.3	-	-	-	77.9	-	-	-
MAY	-	0.9	-	-	-	1.9	-	-	-	47.6	-	-
JUNE	-	1.8	-	-	-	2.5	-	-	-	74.2	-	-
JULY	0.2	1.8	0.1	-	0.4	2.4	0.1	-	60.8	74.9	93.3	-
AUGUST	0.2	2.9	-	-	0.3	3.0	-	-	62.4	94.2	-	-
SEPTEMBER	0.2	2.0	-	-	0.5	2.3	-	-	45.1	87.6	-	-
OCTOBER	-	1.6	-	-	-	2.0	-	0.1	-	78.6	-	46.0
NOVEMBER	0.2	0.2	-	0.6	0.5	0.3	-	0.7	53.2	88.1	-	88.1
DECEMBER	-	-	0.3	0.3	-	-	0.2	0.4	-	-	75.4	57.3
TOTAL	4.6	9.6	0.5	0.9	6.3	12.3	0.4	1.2	75.9	78.2	84.3	74.8

Notes: * Figures exclude MoD charter flights. No charter operations were recorded during 1993 - 1997.

**The total yearly figures have been rounded off from the actual figures and need not necessarily equal the sum of the rounded off monthly figures.

Table 5(d): Departures by air to U.K. (Charter Flights) 1999 - 2001 *,**

MONTH	SEATS USED (000's)			SEATS OFFERED (000's)			LOAD FACTOR (%) **		
	1999	2000	2001	1999	2000	2001	1999	2000	2001
JANUARY	0.1	0.1	-	0.1	0.1	-	81.9	82.6	100
FEBRUARY	-	-	-	-	-	-	-	-	-
MARCH	0.1	-	-	0.2	-	-	54.1	-	100
APRIL	0.1	0.2	0.1	0.1	0.3	0.3	100.0	65.8	42.4
MAY	-	-	-	-	-	-	-	-	-
JUNE	-	-	-	-	-	-	-	-	-
JULY	-	-	-	-	-	-	-	-	-
AUGUST	-	-	-	-	0.1	-	-	94.0	-
SEPTEMBER	-	0.1	-	0.2	0.1	-	15.0	56.9	-
OCTOBER	0.1	-	-	0.2	-	-	54.4	-	55.1
NOVEMBER	-	0.1	-	-	0.2	-	-	34.4	-
DECEMBER	-	-	-	0.2	-	-	-	67.5	-
TOTAL	0.5	0.5	0.2	1.0	0.8	0.4	48.8	62.4	50.9

Notes: * No charter operations were recorded during 1993 - 1997. Figures exclude MoD charter flights.

**The total yearly figures have been rounded off from the actual figures and need not necessarily equal the sum of the rounded off monthly figures.

Table 5 (e): Departures by Air (Charter Flights) 2002

2002

MONTH	SEATS USED (000's)	SEATS OFFERED (000's)	LOAD FACTOR (%)
January	0.0	0.0	100.0
February	0.0	0.0	100.0
March	0.1	0.1	100.0
April	0.2	0.2	100.0
May	0.1	0.1	100.0
June	0.1	0.1	100.0
July	0.1	0.1	100.0
August	0.0	0.0	100.0
September	0.0	0.0	100.0
October	0.1	0.1	100.0
November	0.0	0.0	100.0
December	0.1	0.1	53.8
TOTAL	0.9	0.9	94.6

Note: Load factors are calculated on the basis of actual figures and exclude visitors in transit. The total yearly figures have been rounded off from the actual figures and need not necessarily equal the sum of the rounded off monthly figures.

Table 6(a): Arrivals by air from Morocco (Scheduled Flights), 1993-1996

MONTH	SEATS USED (000's)				SEATS OFFERED (000's)				LOAD FACTOR (%)			
	1993	1994	1995	1996	1993	1994	1995	1996	1993	1994	1995	1996
JANUARY	0.6	0.6	0.4	1.6	2.5	2.6	3.2	4.1	23.7	23.1	12.9	40.0
FEBRUARY	0.5	0.5	0.3	0.6	2.2	2.6	2.8	3.1	22.2	19.2	9.9	19.2
MARCH	0.6	0.5	0.4	1.0	2.6	2.7	2.9	3.0	21.4	17.5	14.0	33.3
APRIL	0.4	0.5	0.5	0.6	2.7	2.2	3.2	3.0	15.8	22.8	16.7	21.5
MAY	0.4	0.4	0.5	0.4	2.9	2.5	3.5	2.7	15.6	14.9	13.0	15.6
JUNE	0.3	0.3	0.4	0.5	2.3	2.2	3.5	2.8	14.9	13.0	12.3	19.0
JULY	0.5	0.4	0.4	0.8	2.4	2.0	2.9	2.8	22.1	20.3	13.9	27.1
AUGUST	0.6	0.5	0.6	0.8	1.7	1.5	2.9	2.2	38.1	30.3	22.1	34.8
SEPTEMBER	0.5	0.4	0.4	0.5	1.8	1.6	2.9	2.5	28.7	21.7	13.8	20.1
OCTOBER	0.7	0.4	0.4	0.5	2.2	2.1	3.0	2.8	32.8	18.7	12.4	16.9
NOVEMBER	0.5	0.4	0.7	0.6	2.5	3.2	3.2	2.8	21.0	11.4	20.8	22.3
DECEMBER	0.5	0.3	0.5	0.6	2.5	3.3	3.1	2.3	18.7	10.4	16.5	23.5
TOTAL	6.2	5.0	5.5	8.5	28.2	28.5	37.0	34.1	22.1	17.7	14.9	24.9

Table 6(b): Arrivals by air from Morocco (Scheduled Flights), 1997 -2000

MONTH	SEATS USED (000's)				SEATS OFFERED (000's)				LOAD FACTOR (%)			
	1997	1998	1999	2000	1997	1998	1999	2000	1997	1998	1999	2000
JANUARY	0.5	0.3	0.0	0.0	3.3	2.6	0.9	0.5	13.7	12.0	4.5	7.7
FEBRUARY	0.4	0.4	0.1	0.1	2.5	2.4	0.8	0.5	16.4	17.2	6.9	14.9
MARCH	0.5	0.4	0.1	0.1	2.9	2.2	0.5	0.5	17.4	19.4	26.9	16.0
APRIL	0.5	0.3	0.0	0.1	2.1	1.3	0.0	0.4	22.8	24.9	0.0	15.3
MAY	0.5	0.3	0.0	0.1	2.4	1.2	0.0	0.5	21.4	22.2	0.0	14.8
JUNE	0.4	0.2	0.0	0.1	2.3	1.2	0.0	0.5	15.7	17.0	0.0	15.4
JULY	0.4	0.2	0.0	0.0	2.6	1.1	0.0	0.2	13.9	21.6	0.0	15.1
AUGUST	0.5	0.2	0.0	0.0	1.8	0.9	0.0	0.0	28.1	25.2	0.0	0.0
SEPTEMBER	0.3	0.2	0.0	0.0	2.1	0.9	0.0	0.0	16.0	22.0	0.0	0.0
OCTOBER	0.4	0.3	0.0	0.0	2.4	1.5	0.0	0.0	18.6	16.8	0.0	0.0
NOVEMBER	0.5	0.1	0.1	0.0	2.6	0.9	0.4	0.0	21.2	8.2	18.9	0.0
DECEMBER	0.4	0.2	0.0	0.0	2.7	1.0	0.5	0.0	15.5	22.3	9.5	0.0
TOTAL	5.3	3.2	0.4	0.4	30.0	17.2	3.1	3.0	18.0	18.4	11.5	14.0

Note: No flights were recorded arriving from Morocco after 2000. Load factors are calculated on the basis of actual figures and exclude visitors in transit.

Table 7(a): Departures by air to Morocco (Scheduled Flights), 1993 -1996

MONTH	SEATS USED (000's)				SEATS OFFERED (000's)				LOAD FACTOR (%) *			
	1993	1994	1995	1996	1993	1994	1995	1996	1993	1994	1995	1996
JANUARY	0.7	0.7	0.4	0.7	2.6	2.7	3.4	3.2	26.5	25.5	11.3 (10.9)	21.5 (21.3)
FEBRUARY	0.7	0.4	0.3	0.8	2.3	2.5	2.8	2.7	32.0	17.9	9.6 (9.5)	30.0 (30.0)
MARCH	0.6	0.7	0.5	0.9	2.6	2.7	3.2	3.0	22.5	25.7	16.5 (16.3)	30.5 (30.4)
APRIL	0.6	0.5	0.5	0.6	3.0	2.4	3.0	2.8	21.5	19.7	17.0 (17.0)	20.6 (20.6)
MAY	0.6	0.4	0.7	0.6	2.9	2.6	3.8	3.0	22.7	14.7	18.2 (17.7)	21.1 (21.1)
JUNE	0.6	0.3	0.6	0.6	2.4	2.3	3.6	3.0	23.7	12.7	16.8 (16.2)	20.7 (20.4)
JULY	0.8	0.4	0.4	0.8	1.9	1.6	2.7	2.8	39.2	26.6	13.6 (13.5)	28.7 (28.5)
AUGUST	0.9	0.6	0.5	0.7	1.9	1.8	2.7	2.4	46.0	30.8	18.1 (17.9)	28.9 (28.9)
SEPTEMBER	0.7	0.3	0.7	0.6	2.0	1.8	2.8	2.6	37.0	18.9	24.9 (24.1)	24.7 (24.5)
OCTOBER	0.9	0.5	0.6	0.6	2.3	2.2	3.2	3.0	39.3	21.5	18.2 (17.3)	19.4 (19.1)
NOVEMBER	0.6	0.5	0.6	0.9	2.7	3.4	3.3	2.9	21.8	13.5	17.6 (17.2)	31.4 (31.4)
DECEMBER	0.6	0.4	0.6	0.6	2.5	3.3	2.9	3.0	21.8	19.3	19.0 (18.7)	20.7 (20.7)
TOTAL	8.3	5.7	6.2	8.4	29.1	29.3	37.4	34.4	28.4	19.3	16.7 (16.3)	24.7 (24.6)

Note: * Figures show both passenger and revenue load factors. The latter is derived by excluding non-paying passengers from the "seats used" column. All load factors are calculated on the basis of actual figures.

Table 7(b): Departures by air to Morocco (Scheduled Flights), 1997 -2000

MONTH	SEATS USED (000's)				SEATS OFFERED (000's)				LOAD FACTOR (%) *			
	1997	1998	1999	2000	1997	1998	1999	2000	1997	1998	1999	2000
JANUARY	0.4	0.2	0.1	0.1	3.1	3.1	0.8	0.5	13.0 (13.0)	10.2 (9.9)	8.3 (8.0)	13.4 (13.4)
FEBRUARY	0.4	0.5	0.1	0.1	2.4	2.4	0.8	0.5	17.7 (17.1)	22.0 (21.6)	15.3 (15.1)	18.4 (18.4)
MARCH	0.4	0.3	0.1	0.1	2.9	2.9	0.5	0.5	14.6 (13.6)	14.5 (14.0)	11.2 (10.6)	17.4 (17.4)
APRIL	0.4	0.3	0.0	0.1	2.1	2.1	0.0	0.4	20.1 (19.4)	27.4 (27.0)	0.0 (0.0)	17.1 (17.1)
MAY	0.5	0.2	0.0	0.1	2.7	2.7	0.0	0.5	16.9 (16.3)	16.0 (15.9)	0.0 (0.0)	10.5 (10.5)
JUNE	0.3	0.2	0.0	0.1	2.3	2.3	0.0	0.5	14.0 (13.3)	11.9 (11.8)	0.0 (0.0)	14.4 (14.4)
JULY	0.4	0.2	0.0	0.0	2.4	2.4	0.0	0.2	18.5 (17.9)	12.9 (12.7)	0.0 (0.0)	16.4 (16.4)
AUGUST	0.5	0.2	0.0	0.0	2.2	2.2	0.0	0.0	24.1 (23.6)	15.3 (15.2)	0.0 (0.0)	0.0 (0.0)
SEPTEMBER	0.4	0.2	0.0	0.0	2.5	2.5	0.0	0.0	16.6 (16.1)	18.2 (18.2)	0.0 (0.0)	0.0 (0.0)
OCTOBER	0.4	0.2	0.0	0.0	2.1	2.1	0.0	0.0	18.0 (17.4)	12.4 (12.3)	0.0 (0.0)	0.0 (0.0)
NOVEMBER	0.3	0.1	0.1	0.0	2.3	2.3	0.4	0.0	13.6 (13.2)	9.5 (9.3)	13.6 (13.6)	0.0 (0.0)
DECEMBER	0.4	0.2	0.0	0.0	2.5	2.5	0.5	0.0	14.8 (14.4)	15.8 (15.8)	8.0 (8.0)	0.0 (0.0)
TOTAL	4.9	4.9	0.3	0.5	29.5	29.5	2.9	3.0	16.6 (16.2)	15.2 (15.0)	11.4 (11.2)	15.1 (15.1)

Note: * Figures show both passenger and revenue load factors. The latter is derived by excluding non-paying passengers from the "seats used" column. All load factors are calculated on the basis of actual figures.

** No flights departing to Morocco were recorded after 2000.

Table 8: Commercial Freight, Set Down/Picked Up, Gibraltar 1975 -2002

(000's kgs)

YEAR	SET DOWN	PICKED UP
1975	1701	119
1976	1721	125
1977	1089	87
1978	927	62
1979	896	61
1980	447	38
1981	318	64
1982	481	44
1983	381	38
1984	333	36
1985	419	40
1986	523	59
1987	499	67
1988	599	40
1989	648	45
1990	797	95
1991	596	54
1992	476	64
1993	597	74
1994	518	49
1995	504	52
1996	406	58
1997	330	57
1998	406	69
1999	433	77
2000	419	74
2001	306	71
2002	289	60

Note: Relates to freight from/to all destinations.

COMMERCIAL FREIGHT 1981 - 2002

