



Government of Gibraltar

Abstract of Statistics 2006



Statistics
Office



GOVERNMENT OF GIBRALTAR

ABSTRACT OF STATISTICS 2006

STATISTICS OFFICE

Government of Gibraltar
Statistics Office

Statistics Online

Copies of this Abstract can be obtained, free of charge from the Statistics Office or from the Publications Office (+350 70071) and are also available electronically on the Gibraltar Government Website (www.gibraltar.gov.gi).

Historic data can be downloaded from previous copies of the report available on-line.

Comments and requests for general information should be addressed to:

Statistics Office
99 Harbours Walk
The New Harbours
or
E-mail: statistics@gibraltar.gov.gi
Tel: +350 75515 / +350 75490
Fax: +350 51160

INTRODUCTION

This is the thirty-first Abstract of Statistics to be published. The object of the Abstract is to provide a selection of statistics, in one compact volume, on topics of interest. Most of the information in this Annual Abstract is published separately, by a number of official departments and other authoritative sources and is already in the public domain. Current data for many of the tables appearing in this Abstract are contained in other Reports published by the Statistics Office, such as the Tourist Survey, Hotel Occupancy Survey and Employment Survey. A number of population statistics have been taken from the Census 2001, also published by the Statistics Office.

Definitions and explanatory notes

The tables contain notes and definitions that are important to the proper interpretation and use of the statistics. Sources of information can be found on every page.

July 2007

<u>TABLE</u>	<u>DESCRIPTION</u>	<u>PAGE</u>
1	Key Indicators, 2003 - 2006	1
	<u>POPULATION</u>	
2	Civilian Population of Gibraltar by Nationality, 1961, 1970, 1975 - 2006	2
3	Population and Persons Present in Gibraltar, 1970, 1981, 1991 and 2001	3
4	Population by Age Group and Sex, 1970, 1981, 1991 and 2001	4
5	Population by Religion and Sex, 1970, 1981, 1991 and 2001	5
6	Population by Religion, Nationality and Sex, 2001	6
7	Civilian Population of Gibraltar by Sex, 1961, 1970, 1975 - 2006	7
8	Registered Live Births in Gibraltar, 1975 - 2006	8
9	Births by Age of Mother, 2006	9
10	Deaths Registered in Gibraltar, 1975 - 2006	10
11	Life Expectancy, 1981, 1991 and 2001	11
12	Marriages in Gibraltar, 1975 - 2006	12
13	Marriages (Residents) in Gibraltar by Month, 1995 - 2006	13
14	Divorces (Residents) in Gibraltar, 1998 - 2006	14
15	Population by Age Group and Marital Status, 2001	15
	<u>HOUSING</u>	
16	Dwelling by Tenure, Gibraltar 1970, 1981, 1991 and 2001	16
17	Government Housing Stock by Age	
18	Distribution of Households by Number of Persons and Number of Rooms per Household, 2001 Census	17
19	Distribution of Households by Number of Persons per Household and Tenure, 2001 Census	18
	<u>EDUCATION</u>	
20 a & b	Teaching Staff at Government and Private (primary and secondary) Schools by Qualifications, at 1st September 2006	19
21 a & b	Pupils Enrolled at Government Schools, by Age, 1st September 2006	20
	<u>HEALTH</u>	
22	Hospital Summary, 2002 - 2006	21
23	Laboratory Confirmed Notifiable Diseases, 2004 - 2006	
24	Cause of Death (%), 2004 - 2006	22
25	Nursing, Dental and Child Welfare Clinic Activity, 2005 - 2006	23
	<u>PUBLIC SAFETY</u>	
26	Road Accidents and Casualties, 1975 - 2006	24
27	Criminal Offences, 1999 - 2007	25
28	Industrial Accidents by Cause of Injury, 1998 - 2006	26
29	Number of Calls Handled by Fire Service, 1999 - 2006	27
30	Hazard Classification of Fires Attended, 1999 - 2006	28
31	Analysis of Special Services Attended, 2004 - 2006	29
32	Supposed Causes of Fire, 2006	30

<u>TABLE</u>	<u>DESCRIPTION</u>	<u>PAGE</u>
<u>CIVIL ADMINISTRATION</u>		
33	Receptions into Prison and Population in Custody, 1996 - 2006	31
34	Receptions into Prison by Age, 1999 - 2006	32
<u>EMPLOYMENT</u>		
35	Number of Employee Jobs by Sex, Nationality, Sector and Occupation October 2005/October 2006	33
36	Number of Employee Jobs by Industry, October 2005 and October 2006	34
37	Number of Weekly-Paid Employee Jobs, October 2006	35
38	Number of Monthly-Paid Employee Jobs, October 2006	36
Charts	Weekly-Paid and Monthly-Paid Employee Jobs by Sector and Sex, October 2006	37
39	Average Annual Earnings and Index, All Employee Jobs, 1980 - 2006	38
40	Total Number of Employee Jobs, April 1980 - October 2006	39
41	Number of Employee Jobs by S.I.C. (92) Sections, October 2006	40
42(a)	Full-Time Monthly-Paid Adult Employee Jobs, 1983 - 2006	41
42(b)	Full-Time Weekly-Paid Adult Employee Jobs, 1983 - 2006	42
43(a)	Full-Time Monthly-Paid Adult Employee Jobs, Official Sector, 1983 - 2006	43
43(b)	Full-Time Weekly-Paid Adult Employee Jobs, Official Sector, 1983 - 2006	44
44(a)	Full-Time Monthly-Paid Adult Employee Jobs, Private Sector, 1983 - 2006	45
44(b)	Full-Time Weekly-Paid Adult Employee Jobs, Private Sector, 1983 - 2006	46
45	Distribution of Average Annual Earnings of All Employee Jobs, October 2006	47
<u>NATIONAL INCOME</u>		
46	National Income, 1999 - 2005	48
<u>INDEX OF RETAIL PRICES</u>		
47	Index of Retail Prices: All Items, 1996 - 2007	49
48	Index of Retail Prices (Food and All Items), 1996 - 2007	50
49	Index of Retail Prices (Comparative Weights)	51
50	Internal Purchasing Power of the Pound, 1993 - 2006	52
<u>TRADE</u>		
51	Summary of Imports and Exports (excluding Petroleum Products), 1974 - 2006	53
52	Imports from E.U. Countries (excluding Petroleum Products), 2000 - 2006	54
53	Imports by Main Countries of Origin (excluding Petroleum Products), 2000 - 2006	55
<u>TOURISM</u>		
54	Visitor Arrivals in Gibraltar, 1974 - 2006	56
Chart	Visitor Arrivals, 1985 - 2006	57
55	All Visitor Arrivals, 2005 - 2006	58
56	Visitor Arrivals by Sea, 2005 - 2006	59
57	Visitor Arrivals by Air, 2005 - 2006	60
58	Visitor Arrivals by Land, 2005 - 2006	61

<u>TABLE</u>	<u>DESCRIPTION</u>	<u>PAGE</u>
59	General Analysis, All Hotels, 1980 - 2006	62
60	Arrivals, Guest Nights Sold, Sleeper Occupancy and Average Length of Stay, 2005 - 2006	63
61	Arrivals, Room Nights Sold and % Room Occupancy, 2005 - 2006	64
62	Tourist Expenditure in Gibraltar, 1992 - 2006	65
Chart	Tourist Expenditure, 1992 - 2006	66
<u>GOVERNMENT REVENUE AND EXPENDITURE</u>		
63(a)	Consolidated Fund Recurrent Revenue and Expenditure, 1983 - 2008	67
63(b)	Overall Government Revenue and Expenditure, 1998 - 2007	68
64(a)	Consolidated Fund Recurrent Expenditure and Revenue Estimates, 2006 - 2007	69
64(b)	Overall Government Revenue and Expenditure Analysis, 2006-2007	70
<u>FINANCIAL SERVICES</u>		
65	Commercial Banks Liabilities, 1989 - 2007	71
66	Commercial Banks Assets, 1989 - 2007	72
67	Company Management and Trusteeships, as at 31st March, 2003 - 2007	73
68	Licensees, 1997 - 2007	
<u>TRANSPORT</u>		
69	New Registrations, Road Vehicles, 1983 - 2006	74
70	Vehicles with Current Renewable Road Tax Licence on 31st December 1983 - 2006	75
71	Deep-Sea Merchant Ships Calling at Gibraltar, 1976 - 2006	76
72	Main Purpose of Call of Deep-Sea Merchant Ships Arriving at Gibraltar, 1976 - 2006	77
73	Comparative Return of Total Shipping Arriving at Gibraltar, 2005 - 2006	78
74	Arrivals/Departures by Air from/to UK, 1982 - 2006	79
Chart	Arrivals by Air from UK, 1982 - 2006	80
75	Commercial Freight, Set Down/Picked Up, Gibraltar, 1979 - 2006	81
<u>TELECOMMUNICATIONS</u>		
76	Number of Telephone Stations and Exchange Lines, 1974 - 2006	82
77	Number of Telephone Calls, 2000 - 2006	83
78	Number of Internet Connections, 2004 - 2006	84
<u>PUBLIC UTILITIES</u>		
79	Supply and Billings of Potable Water, 1974 - 2006	85
80	Capacity, Generation and Billings of Electricity, 1974 - 2006	86
<u>METEOROLOGICAL DATA</u>		
81	Monthly Rainfall (Millimetres), 2001 - 2006	87
82	Daily Mean Temperature °C., 2001 - 2006	88
83	Daily Mean Hours of Sunshine, 2001 - 2006	89

TABLE 1: Key Indicators, 2003 - 2006

	<u>2003</u>	<u>2004</u>	<u>2005</u>	<u>2006</u>
Population	28,605	28,759	28,779	28,875
Employee Jobs	15,419	15,994	16,874	18,485
Employee Jobs as % of Total Population	53.9%	55.6%	58.6%	64.0%
Births per 1,000 Population	13.0	14.6	14.5	12.9
Deaths per 1,000 Population	8.2	8.4	8.7	8.0
Resident Marriages per 1,000 Population	6.3	5.5	6.3	5.6
Persons per Sq. Km.	4,768	4,793	4,797	4,813
Gross Domestic Product per Head (as at 31 March)	£17,770	£19,552	£20,831	n/a
Price Inflation (January to January)	2.5%	2.9%	2.8%	2.6%
Pupils per Teacher (i)	15.8	16.3	15.7	16.2
Licensed Road Vehicles per 100 Persons	71.2	78.7	80.9	83.6
Average Electricity Consumption per Head (KW Hours)	4,335	4,496	4,858	5,001
Average Water Consumption per Head (Cubic Metres)	37.2	39.2	38.2	38.6

Note: (i) Figures exclude staff and pupils of Private Schools.

POPULATION

TABLE 2: Civilian Population of Gibraltar by Nationality, 1961, 1970, 1975 - 2006

<u>YEAR</u>	<u>GIBRALTARIAN</u>	<u>UK BRITISH</u>	<u>OTHER</u>	<u>TOTAL</u>
1961	17,985	4,809	1,132	23,926
1970	18,873	5,162	2,783	26,818
1975	19,258	6,537	4,139	29,934
1976	19,351	6,670	4,096	30,117
1977	19,424	6,215	3,639	29,278
1978	19,459	6,442	3,514	29,415
1979	19,515	6,760	3,485	29,760
1980	19,579	6,676	3,532	29,787
1981	19,825	5,971	2,923	28,719
1982	19,899	5,794	3,651	29,344
1983	20,021	5,808	3,244	29,073
1984	20,009	5,181	3,149	28,339
1985	20,015	5,424	3,404	28,843
1986	20,071	5,502	3,593	29,166
1987	20,162	5,665	3,865	29,692
1988	20,236	5,683	4,158	30,077
1989	20,425	5,782	4,482	30,689
1990	20,531	5,550	4,780	30,861
1991	20,022	5,182	2,870	28,074
1992	20,197	5,027	3,624	28,848
1993	20,275	4,465	3,311	28,051
1994	20,313	4,150	2,644	27,107
1995	20,441	4,023	2,706	27,170
1996	20,608	3,908	2,570	27,086
1997	20,772	4,015	2,405	27,192
1998	20,921	3,825	2,279	27,025
1999	21,010	3,792	2,402	27,204
2000	21,121	3,696	2,216	27,033
2001	22,882	3,372	1,986	28,240
2002	22,974	3,347	2,199	28,520
2003	23,069	3,270	2,266	28,605
2004	23,200	3,326	2,233	28,759
2005	23,361	3,319	2,099	28,779
2006	23,447	3,284	2,144	28,875

Notes: (i) The civilian population includes Gibraltarian residents, other British residents (including the wives and families of UK-based servicemen, but not the servicemen themselves) and non-British residents. Visitors and transients are not included.

(ii) The 1961, 1970, 1981, 1991 and 2001 figures are those of the Census taken on 3 October 1961, 6 October 1970, 9 November 1981, 14 October 1991 and 12 November 2001 respectively.

TABLE 3: Population and Persons Present in Gibraltar, 1970, 1981, 1991 and 2001

	<u>1970</u>	<u>1981</u>	<u>1991</u>	<u>2001</u>
Gibraltarians	18,873	19,825	20,022	22,882
Other British	3,001	3,706	3,811	2,627
Non-British	2,783	2,923	2,870	1,986
UK-based and families of Servicemen	2,161	2,265	1,371	745
POPULATION	26,818	28,719	28,074	28,240
Visitors	1,003	726	1,010	3,383
Transients	129	146	-	-
Not-Styled	15	25	-	-
Persons present on Census night	27,965	29,616	29,084	31,623

PERSONS PRESENT ON CENSUS NIGHT, 1970, 1981, 1991, 2001

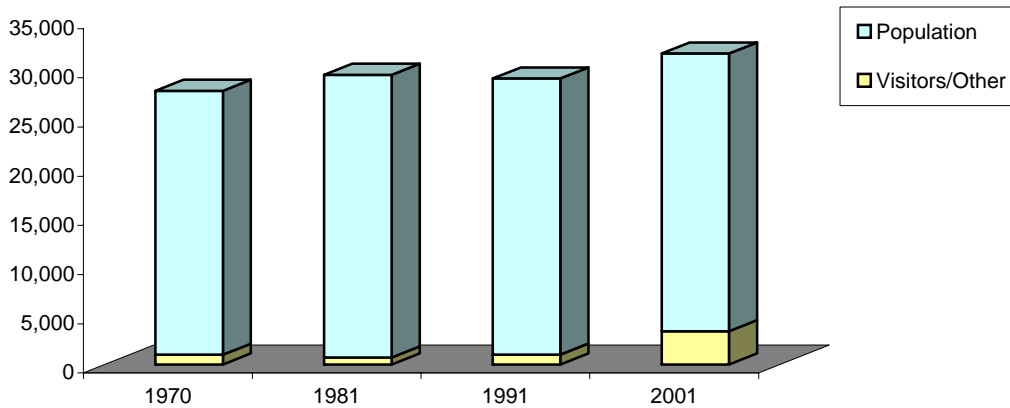


TABLE 4: Population by Age Group and Sex, 1970, 1981, 1991 and 2001

AGE GROUP	1970			1981			1991			2001		
	(YEARS)	MALE	FEMALE	TOTAL	MALE	FEMALE	TOTAL	MALE	FEMALE	TOTAL	MALE	FEMALE
0 - 4	909	928	1,837	979	885	1,865	855	810	1,665	767	691	1,458
5 - 9	1,017	971	1,988	981	956	1,937	887	828	1,715	932	841	1,773
10 - 14	939	898	1,837	957	915	1,872	1,000	862	1,862	956	875	1,831
15 - 19	958	786	1,744	960	922	1,884	920	931	1,851	917	884	1,801
20 - 24	1,303	830	2,133	998	885	1,884	894	910	1,804	912	852	1,764
25 - 29	1,032	698	1,730	1,146	946	2,093	1,044	991	2,035	867	903	1,770
30 - 34	1,168	732	1,900	1,338	887	2,226	1,016	948	1,964	959	957	1,916
35 - 39	974	724	1,698	1,104	751	1,857	1,082	935	2,017	1,008	1,036	2,044
40 - 44	898	716	1,614	1,082	742	1,824	1,191	874	2,065	987	1,008	1,995
45 - 49	791	860	1,651	978	715	1,693	998	714	1,712	988	916	1,904
50 - 54	760	826	1,586	850	696	1,546	949	740	1,689	1,056	888	1,944
55 - 59	669	707	1,376	700	755	1,455	804	665	1,469	844	766	1,610
60 - 64	557	634	1,191	598	768	1,366	644	632	1,276	691	688	1,379
65 - 69	413	496	909	484	597	1,081	482	676	1,158	611	636	1,247
70 - 74	269	404	673	339	535	874	402	602	1,004	477	560	1,037
75 - 79	130	271	401	199	344	543	259	394	653	329	566	895
80 and over	88	251	339	121	339	460	201	563	764	320	759	1,079
Not Stated	39	26	65	10	9	19	-	-	-	23	25	48
TOTAL	12,914	11,758	24,672	13,824	12,647	26,479	13,628	13,075	26,703	13,644	13,851	27,495

Note: The Census figures exclude visitors, UK-based servicemen and their families and UK-based civilians and their families.

TABLE 5: Population by Religion and Sex, 1970, 1981, 1991 and 2001

<u>RELIGION</u>	<u>1970</u>			<u>1981</u>			<u>1991</u>			<u>2001</u>		
	<u>MALE</u>	<u>FEMALE</u>	<u>TOTAL</u>	<u>MALE</u>	<u>FEMALE</u>	<u>TOTAL</u>	<u>MALE</u>	<u>FEMALE</u>	<u>TOTAL</u>	<u>MALE</u>	<u>FEMALE</u>	<u>TOTAL</u>
Roman Catholic	9,097	10,036	19,133	9,466	10,277	19,747	9,819	10,722	20,541	10,314	11,156	21,470
Church of England	1,055	884	1,939	1,195	1,064	2,259	997	844	1,841	1,031	889	1,920
Other Christian	242	237	479	327	362	689	450	361	811	442	441	883
Moslem	1,858	131	1,989	1,905	216	2,124	1,461	389	1,850	755	347	1,102
Jewish	270	282	552	291	298	589	308	319	627	276	308	584
Hindu	153	85	238	254	138	393	334	221	555	260	231	491
None	n/a	n/a	n/a	n/a	n/a	n/a	n/a	n/a	n/a	431	355	786
Other and Not Stated	239	103	342	386	292	678	259	219	478	135	124	259
TOTAL	12,914	11,758	24,672	13,824	12,647	26,479	13,628	13,075	26,703	13,644	13,851	27,495

Note: The Census figures exclude visitors, UK-based servicemen and their families and UK-based civilians and their families.

TABLE 6: Population by Religion, Nationality and Sex, 2001

<u>RELIGION</u>	<u>GIBRALTARIAN</u>			<u>UK BRITISH</u>			<u>MOROCCAN</u>			<u>OTHER</u>			<u>ALL NATIONALITIES</u>		
	<u>MALE</u>	<u>FEMALE</u>	<u>TOTAL</u>	<u>MALE</u>	<u>FEMALE</u>	<u>TOTAL</u>	<u>MALE</u>	<u>FEMALE</u>	<u>TOTAL</u>	<u>MALE</u>	<u>FEMALE</u>	<u>TOTAL</u>	<u>MALE</u>	<u>FEMALE</u>	<u>TOTAL</u>
Roman Catholic	9,720	10,427	20,147	386	450	836	4	-	4	204	279	483	10,314	11,156	21,470
Church of England	531	435	966	486	446	932	-	-	-	14	8	22	1,031	889	1,920
Other Christian	273	264	537	109	128	237	2	-	2	58	49	107	442	441	883
Moslem	47	27	74	20	11	31	661	289	950	27	20	47	755	347	1,102
Jewish	226	238	464	25	38	63	2	2	4	23	30	53	276	308	584
Hindu	85	69	154	68	72	140	-	-	-	107	90	197	260	231	491
Other	81	63	144	46	47	93	-	-	-	8	14	22	135	124	259
None	222	174	396	160	135	295	1	-	1	48	46	94	431	355	786
TOTAL	11,185	11,697	22,882	1,300	1,327	2,627	670	291	961	489	536	1,025	13,644	13,851	27,495

Note: The Census figures exclude visitors, UK-based servicemen and their families and UK-based civilians and their families.

TABLE 7: Civilian Population of Gibraltar by Sex, 1961, 1970, 1975 - 2006

<u>YEAR</u>	<u>MALE</u>	<u>FEMALE</u>	<u>TOTAL</u>
1961	10,978	12,948	23,926
1970	13,501	13,332	26,833
1975	15,589	14,345	29,934
1976	15,556	14,561	30,117
1977	15,041	14,237	29,278
1978	15,083	14,332	29,415
1979	15,256	14,504	29,760
1980	15,314	14,473	29,787
1981	14,460	14,259	28,719
1982	15,090	14,254	29,344
1983	14,777	14,296	29,073
1984	14,436	13,903	28,339
1985	14,717	14,126	28,843
1986	15,042	14,124	29,166
1987	15,325	14,367	29,692
1988	15,622	14,455	30,077
1989	15,888	14,801	30,689
1990	16,001	14,860	30,861
1991	14,102	13,972	28,074
1992	14,852	13,996	28,848
1993	14,432	13,619	28,051
1994	13,604	13,503	27,107
1995	13,642	13,528	27,170
1996	13,594	13,492	27,086
1997	13,507	13,685	27,192
1998	13,419	13,606	27,025
1999	13,501	13,703	27,204
2000	13,406	13,627	27,033
2001	13,897	14,343	28,240
2002	14,300	14,220	28,520
2003	14,384	14,221	28,605
2004	14,426	14,333	28,759
2005	14,408	14,371	28,779
2006	14,435	14,440	28,875

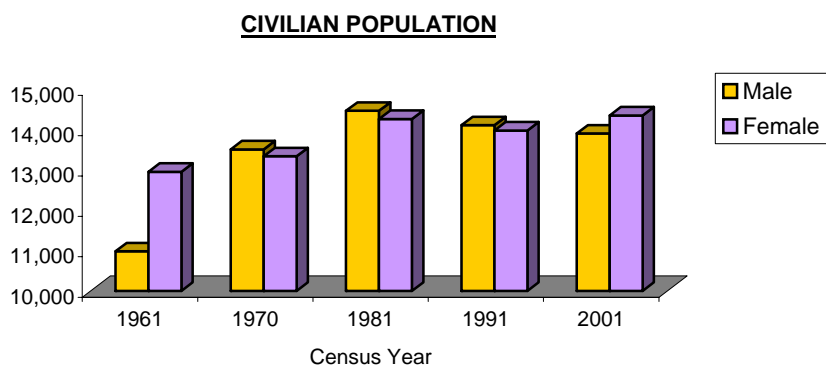
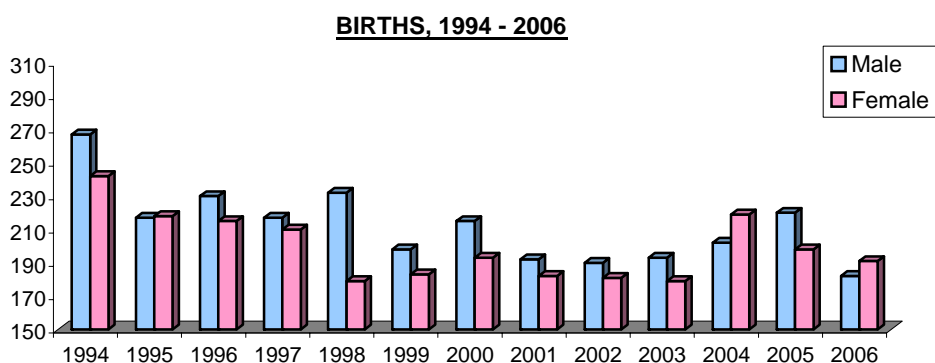


TABLE 8: Registered Live Births in Gibraltar, 1975 - 2006

<u>YEAR</u>	<u>MALE</u>	<u>FEMALE</u>	<u>TOTAL</u>
1975	261	264	525
1976	275	235	510
1977	277	229	506
1978	292	228	520
1979	234	238	472
1980	285	265	550
1981	259	252	511
1982	296	270	566
1983	259	251	510
1984	264	242	506
1985	245	253	498
1986	254	253	507
1987	287	244	531
1988	268	255	523
1989	283	247	530
1990	264	267	531
1991	304	263	567
1992	299	270	569
1993	272	246	518
1994	267	242	509
1995	217	218	435
1996	230	215	445
1997	217	210	427
1998	232	179	411
1999	198	183	381
2000	215	193	408
2001	192	182	374
2002	190	181	371
2003	193	179	372
2004	202	219	421
2005	220	198	418
2006	182	191	373



Note: These figures relate to births registered during the year in question.

TABLE 9: Births by Age of Mother, 2006

<u>AGE (YEARS)</u>	<u>MALES</u>	<u>FEMALES</u>	<u>TOTAL</u>
19 and under	8	12	20
20-34	133	140	273
over 35	37	35	72
TOTAL	178	187	365

BIRTHS BY AGE OF MOTHER, 2006

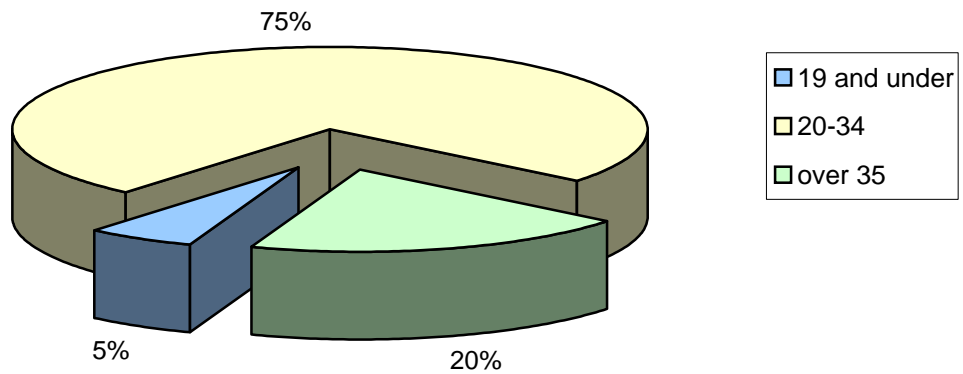


TABLE 10: Deaths Registered in Gibraltar, 1975 - 2006

<u>YEAR</u>	<u>MALE</u>	<u>FEMALE</u>	<u>TOTAL</u>
1975	112	119	231
1976	143	110	253
1977	134	114	248
1978	124	129	253
1979	125	132	257
1980	141	141	282
1981	113	118	231
1982	117	106	223
1983	128	124	252
1984	136	129	265
1985	126	150	276
1986	154	136	290
1987	109	108	217
1988	135	158	293
1989	122	97	219
1990	144	135	279
1991	140	115	255
1992	100	105	205
1993	129	146	275
1994	125	136	261
1995	103	102	205
1996	109	112	221
1997	119	144	263
1998	130	137	267
1999	131	146	277
2000	136	126	262
2001	131	118	249
2002	117	125	242
2003	120	114	234
2004	127	115	242
2005	112	137	249
2006	107	123	230

DEATHS, 1994 - 2006

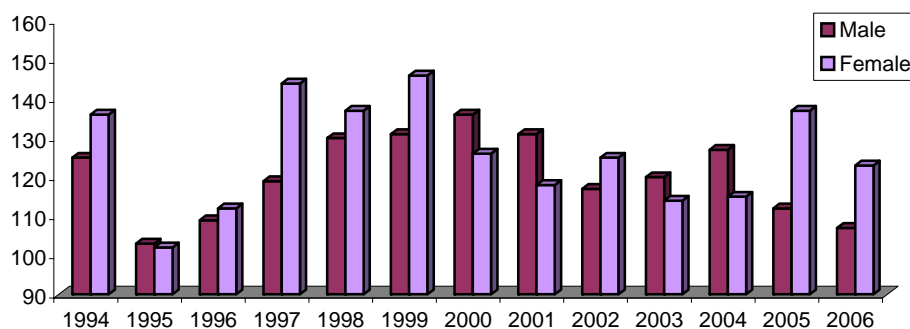


TABLE 11: Life Expectancy, 1981, 1991 and 2001

<u>AGE (YEARS)</u>	<u>1981</u>		<u>1991</u>		<u>2001</u>	
	<u>MALE</u>	<u>FEMALE</u>	<u>MALE</u>	<u>FEMALE</u>	<u>MALE</u>	<u>FEMALE</u>
0	71.4	75.5	73.4	80.4	78.5	83.3
1	70.8	75.0	72.8	79.9	77.5	83.5
5	66.8	71.0	68.8	75.9	73.5	79.5
10	62.0	66.0	63.8	70.9	68.5	75.0
15	57.0	61.0	58.9	65.9	63.5	70.0
20	52.1	56.0	53.9	60.9	58.5	65.0
25	47.1	51.1	49.0	56.0	53.5	60.0
35	37.4	41.4	39.3	46.3	43.5	50.3
45	27.5	31.5	30.0	36.6	33.9	40.3
55	18.0	22.3	21.1	27.2	25.8	30.3
65	11.1	13.5	13.4	18.4	17.9	20.6
75	7.5	8.3	8.0	12.4	11.3	13.7

TABLE 12: Marriages in Gibraltar, 1975 - 2006

<u>YEAR</u>	<u>RESIDENT (i)</u>	<u>NON-RESIDENT (ii)</u>	<u>TOTAL</u>
1975	205	287	492
1976	208	287	495
1977	153	308	461
1978	220	276	496
1979	174	285	459
1980	203	226	429
1981	194	235	429
1982	178	228	406
1983	181	251	432
1984	175	223	398
1985	173	411	584
1986	177	456	633
1987	192	532	724
1988	249	490	739
1989	212	542	754
1990	236	545	781
1991	229	552	781
1992	246	532	778
1993	232	526	758
1994	142	555	697
1995	159	608	767
1996	155	567	722
1997	136	539	675
1998	141	498	639
1999	161	527	688
2000	149	572	721
2001	164	575	739
2002	166	643	809
2003	179	650	829
2004	159	727	886
2005	182	640	822
2006	161	673	834

Notes : (i) Refers to marriages where one or both partners are resident in Gibraltar.
(ii) Refers to marriages where neither partner is resident in Gibraltar.

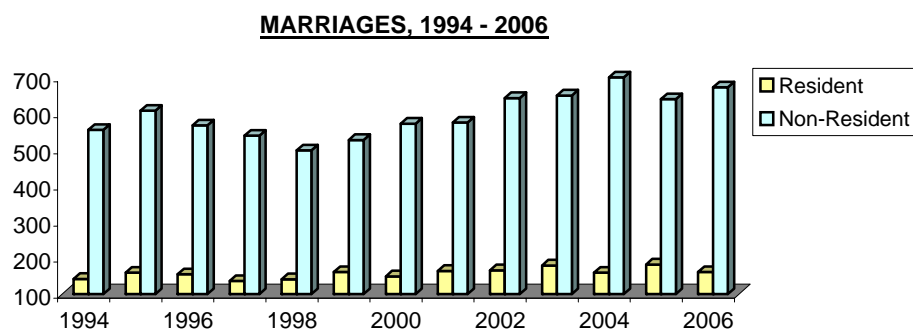


TABLE 13: Marriages (Residents) in Gibraltar by Month, 1995 - 2006

<u>MONTH</u>	<u>1995</u>	<u>1996</u>	<u>1997</u>	<u>1998</u>	<u>1999</u>	<u>2000</u>	<u>2001</u>	<u>2002</u>	<u>2003</u>	<u>2004</u>	<u>2005</u>	<u>2006</u>
January	6	11	4	10	6	4	6	5	6	6	4	6
February	9	11	10	9	10	9	9	8	9	8	10	7
March	8	12	6	6	9	7	6	9	16	11	13	8
April	14	12	4	9	7	12	7	11	15	10	18	9
May	15	11	9	7	7	15	10	11	10	12	16	24
June	19	16	20	15	24	22	15	17	18	31	23	16
July	13	24	20	19	28	12	29	22	19	13	20	24
August	15	17	12	21	17	20	21	18	24	16	23	19
September	26	23	20	19	22	15	21	24	22	20	34	22
October	9	8	11	11	12	15	18	17	19	12	10	9
November	15	4	10	9	12	12	12	13	11	9	9	6
December	10	6	10	6	7	6	10	11	10	11	2	11
TOTAL	159	155	136	141	161	149	164	166	179	159	182	161

TABLE 14: Divorces (Residents) in Gibraltar, 1998 - 2006

<u>YEAR</u>	<u>DIVORCES</u>
1998	117
1999	89
2000	96
2001	129
2002	150
2003	159
2004	119
2005	97
2006	121

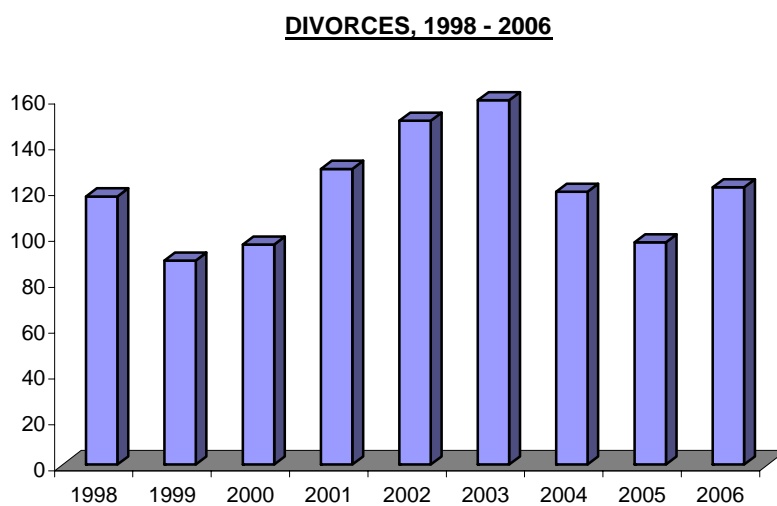


TABLE 15: Population by Age Group and Marital Status, 2001

<u>AGE GROUP</u> <u>(YEARS)</u>	<u>SINGLE</u>		<u>MARRIED</u>		<u>WIDOWED</u>		<u>DIVORCED</u>		<u>SEPARATED</u>		<u>RE-MARRIED</u>		<u>TOTAL</u>		<u>GRAND TOTAL</u>
	<u>MALE</u>	<u>FEMALE</u>	<u>MALE</u>	<u>FEMALE</u>	<u>MALE</u>	<u>FEMALE</u>	<u>MALE</u>	<u>FEMALE</u>	<u>MALE</u>	<u>FEMALE</u>	<u>MALE</u>	<u>FEMALE</u>	<u>MALE</u>	<u>FEMALE</u>	
Under 15	2,655	2,407	-	-	-	-	-	-	-	-	-	-	2,655	2,407	5,062
15 - 19	915	874	2	10	-	-	-	-	-	-	-	-	917	884	1,801
20 - 24	842	674	66	160	-	-	-	3	4	15	-	-	912	852	1,764
25 - 29	541	392	285	442	-	1	14	28	27	39	-	1	867	903	1,770
30 - 34	286	158	581	667	-	5	40	58	47	61	5	8	959	957	1,916
35 - 39	173	120	725	734	2	16	47	88	46	59	15	19	1,008	1,036	2,044
40 - 44	122	82	734	755	3	17	63	90	45	52	20	12	987	1,008	1,995
45 - 49	97	55	771	704	5	28	64	79	37	39	14	11	988	916	1,904
50 - 54	91	53	869	680	10	42	48	69	24	31	14	13	1,056	888	1,944
55 - 59	42	39	711	584	10	64	49	57	17	17	15	5	844	766	1,610
60 - 64	34	35	594	500	18	95	26	41	11	10	8	7	691	688	1,379
65 - 69	37	39	519	399	31	155	9	33	9	9	6	1	611	636	1,247
70 - 74	25	39	386	295	52	203	4	12	5	10	5	1	477	560	1,037
75 - 79	24	34	249	204	47	312	4	13	4	2	1	1	329	566	895
80 +	22	76	173	123	122	551	1	9	2	-	-	-	320	759	1,079
Not Stated	14	10	8	10	-	1	-	2	1	1	-	1	23	25	48
TOTAL	5,920	5,087	6,673	6,267	300	1,490	369	582	279	345	103	80	13,644	13,851	27,495

Note: The figures are taken from the 2001 Census and exclude visitors, UK-based servicemen and their families and UK-based civilians and their families.

HOUSING

TABLE 16: Dwelling by Tenure, Gibraltar 1970, 1981, 1991 and 2001

<u>TENURE</u>	<u>1970</u>		<u>1981</u>		<u>1991</u>		<u>2001</u>	
	<u>No.</u>	<u>%</u>	<u>No.</u>	<u>%</u>	<u>No.</u>	<u>%</u>	<u>No.</u>	<u>%</u>
Govt. Rented	3,741	60.7	4,503	65.0	4,694	61.7	4,276*	44.0
Private Rented	2,170	35.2	2,063	29.8	1,758	23.1	1,338	13.8
Owner Occupied	253	4.1	361	5.2	1,152	15.2	2,366	24.4
Co-Ownership	-	-	-	-	-	-	1,655	17.0
Other	n/a	-	n/a	-	n/a	-	82	0.8
TOTAL	6,164	100.0	6,927	100.0	7,604	100.0	9,717	100.0

Notes: (i) Figures relate to the Census and exclude vacant houses/flats. "Other" includes boats, etc.

*(ii) * The reduction from 4,694 to 4,276 reflects an increase in vacant flats, flats under repair or due for demolition as recorded on Census day and the sale of Government property.*

TABLE 17: Government Housing Stock by Age

<u>DATE BUILT</u>	<u>No.</u>	<u>%</u>
1940 & earlier	797	15.7
1948 - 1952	713	14.1
1953 - 1957	179	3.5
1958 - 1962	692	13.7
1963 - 1967	398	7.9
1968 - 1972	433	8.6
1973 - 1977	880	17.4
1978 - 1982	397	7.8
1983 - 1987	192	3.8
1988 - 1992	0	0.0
1993 - 1997	86	1.7
1998 - 2006 (ii)	296	5.8
TOTAL	5,063	100.0

Notes: (i) A review was undertaken of all Government housing stock. A number of adjustments have been made in respect of the period 1940 to 1972 which take account of demolished flats, modernised dwellings, houses put out to tender and dwellings sold to sitting tenants.

(ii) Includes MoD housing transferred to the Gibraltar Government i.e. Edinburgh House built during 1953 - 1957.

TABLE 18: Distribution of Households by Number of Persons and Number of Rooms per Household, 2001 Census

<u>NUMBER OF PERSONS</u>	<u>NUMBER OF ROOMS</u>								<u>TOTAL</u>
	<u>1</u>	<u>2</u>	<u>3</u>	<u>4</u>	<u>5</u>	<u>6</u>	<u>7</u>	<u>8 and over</u>	
1	262	710	681	258	63	25	6	8	2,013
2	71	540	1,234	663	157	64	24	15	2,768
3	7	112	750	684	164	53	17	11	1,798
4	4	64	561	1,009	232	102	33	30	2,035
5	2	25	144	357	130	62	16	17	753
6	-	5	29	105	61	16	9	10	235
7	-	-	7	20	17	7	4	4	59
8 and over	-	-	2	14	8	6	3	6	39
TOTAL	346	1,456	3,408	3,110	832	335	112	101	9,700

TABLE 19: Distribution of Households by Number of Persons per Household and Tenure, 2001 Census

<u>NUMBER OF PERSONS</u>	<u>TENURE</u>					<u>TOTAL</u>
	<u>GOVERNMENT RENTED</u>	<u>PRIVATE RENTED</u>	<u>OWNER OCCUPIER</u>	<u>CO-OWNERSHIP</u>	<u>OTHER</u>	
1	953	471	394	190	5	2,013
2	1,350	406	597	405	10	2,768
3	796	179	444	364	15	1,798
4	680	177	640	517	21	2,035
5	326	73	212	133	9	753
6	121	24	53	34	3	235
7	26	5	15	11	2	59
8 and over	24	3	11	1	-	39
TOTAL	4,276	1,338	2,366	1,655	65	9,700

EDUCATION

**TABLE 20: Teaching Staff at Government and Private (primary and secondary) Schools,
by Qualifications, at 1st September 2006**

(a) Government Schools

<u>QUALIFICATIONS</u>	<u>MALES</u>	<u>FEMALES</u>	<u>TOTAL</u>
Graduate	125	167	292
Qualified	16	24	40
Unqualified	-	2	2
TOTAL	141	193	334

(b) Private Schools

<u>QUALIFICATIONS</u>	<u>MALES</u>	<u>FEMALES</u>	<u>TOTAL</u>
Graduate	3	25	28
Qualified	-	4	4
Unqualified	1	1	2
TOTAL	4	30	34

Notes: (i) Services schools are not included.

(ii) The figures do not include the teaching staff at the Gibraltar High.

TABLE 21: Pupils Enrolled at Government Schools, by Age, 1st September 2006

(a) First and Middle Schools

<u>AGE (YEARS)</u>	<u>MALE</u>	<u>FEMALE</u>	<u>TOTAL</u>
Less than 5	161	173	334
5 to 6	190	178	368
6 to 7	190	161	351
7 to 8	190	160	350
8 to 9	217	189	406
9 to 10	198	200	398
10 to 11	214	165	379
11 to 12	206	178	384
TOTAL	1,566	1,404	2,970

Note: Services children are not included.

(b) Secondary Schools

<u>AGE (YEARS)</u>	<u>MALE</u>	<u>FEMALE</u>	<u>TOTAL</u>
12 to 13	229	216	445
13 to 14	223	223	446
14 to 15	241	236	477
15 to 16	199	181	380
16 to 17	112	119	231
Over 17	74	68	142
TOTAL	1,078	1,043	2,121

Note: Services children are included.

HEALTH

TABLE 22: Hospital Summary, 2002 - 2006

<u>CATEGORY</u>	<u>2002</u>	<u>2003</u>	<u>2004</u>	<u>2005</u>	<u>2006</u>
<u>St. Bernard's Hospital</u>					
In-Patient Admissions	5,874	6,185	5,925	4,841	2,511
Av. Patients per Day	129	138	153	117	84
Out-Patient Attendances (i) (iii)	34,860	36,675	46,021	53,122	66,114
<u>Primary Care Centre</u>					
Total Out-Patients (ii)	171,848	180,929	220,070	212,027	194,835

Notes: (i) The figures have been adjusted and now include casualty out-patients.

(ii) The figures in respect of 2002 onwards have been revised to include District and Physiotherapy.

(iii) The figures for 2004 and 2005 have been revised to include Dressings, Plasters and Physio.

TABLE 23: Laboratory Confirmed Notifiable Diseases, 2004 - 2006

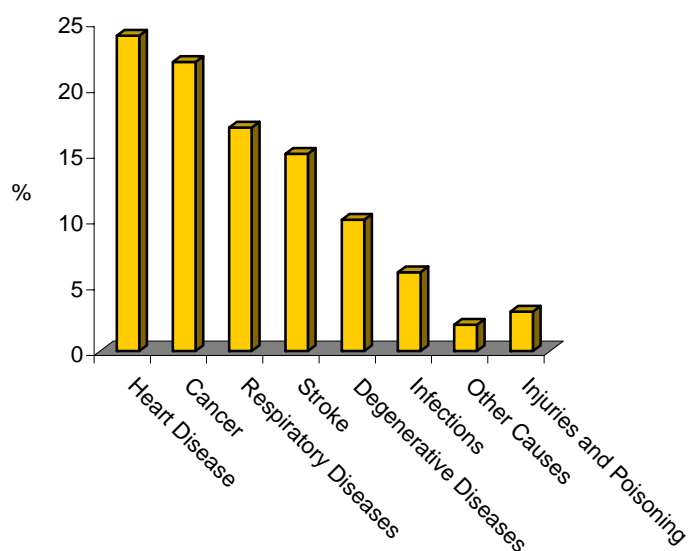
	<u>2004</u>	<u>2005</u>	<u>2006</u>
Campylobacter Jejuni	32	38	48
Rotavirus	14	50	27
Salmonella	90	28	22
Shigella	8	4	-
Tuberculosis	2	1	5
Gonorrhoea	-	-	1
Hepatitis A	2	3	-
Hepatitis B	3	6	5
Meningitis	-	1	-
Whooping Cough	-	-	-
Adenovirus	19	1	18
Respiratory Syncytial Virus	8	29	14
Mycoplasma Pneumoniae	-	1	31
Others	21	44	34
TOTAL	199	206	205

Note: The figures for 2005 are provisional.

TABLE 24: Cause of Death (%), 2004 - 2006

<u>CAUSE</u>	<u>2004</u> (%)	<u>2005</u> (%)	<u>2006</u> (%)
Heart Disease	22	29	24
Cancer	15	22	22
Respiratory Diseases	16	18	17
Stroke	23	9	15
Degenerative Diseases	6	9	10
Infections	12	7	6
Other Causes	5	4	2
Injuries and Poisoning	1	2	3
ALL CAUSES	100	100	100

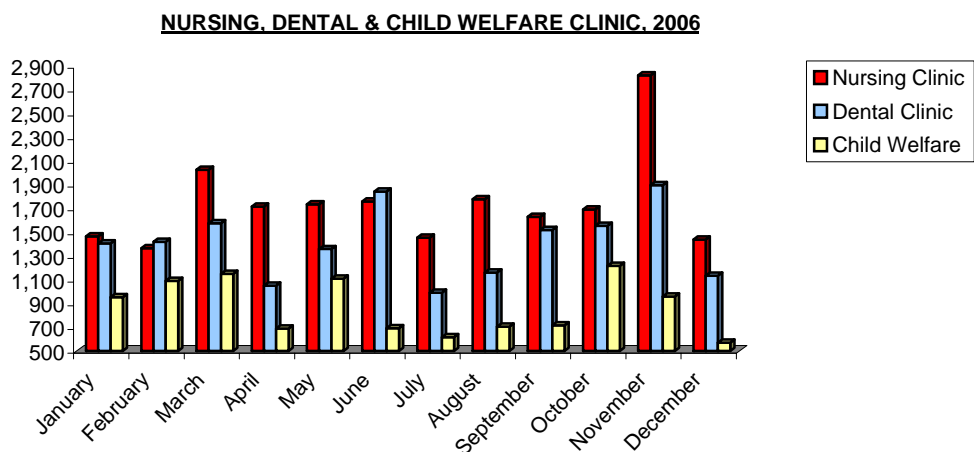
CAUSE OF DEATH (%), 2006



Note: The 2006 percentage figures have been rounded off and need not necessarily equal the sum of the rounded-off total figure.

TABLE 25: Nursing, Dental and Child Welfare Clinic Activity, 2005 - 2006

<u>MONTH</u>	<u>NURSING CLINIC ACTIVITY</u>		<u>DENTAL CLINIC ACTIVITY</u>		<u>CHILD WELFARE CLINIC ACTIVITY</u>	
	<u>2005</u>	<u>2006</u>	<u>2005</u>	<u>2006</u>	<u>2005</u>	<u>2006</u>
January	1,302	1,465	1,202	1,405	858	954
February	1,662	1,365	1,307	1,420	1,037	1,090
March	1,722	2,027	1,274	1,575	763	1,149
April	1,767	1,715	1,676	1,049	907	690
May	1,719	1,736	1,457	1,359	831	1,109
June	1,662	1,760	1,039	1,842	827	692
July	1,508	1,454	1,123	992	724	615
August	1,441	1,779	1,034	1,161	666	704
September	1,743	1,631	1,381	1,519	841	716
October	2,738	1,691	1,443	1,554	991	1,217
November	1,823	2,822	1,199	1,896	912	958
December	1,524	1,438	1,206	1,133	656	571
TOTAL	20,611	20,883	15,341	16,905	10,013	10,465



PUBLIC SAFETY

ACCIDENTS

TABLE 26: Road Accidents and Casualties, 1975 - 2006

<u>YEAR</u>	<u>TOTAL NUMBER OF ACCIDENTS</u>	<u>CASUALTIES</u>	
		<u>KILLED</u>	<u>INJURED</u>
1975	719	4	154
1976	781	1	90
1977	748	3	100
1978	778	-	112
1979	898	1	137
1980	1,105	-	135
1981	926	-	114
1982	1,029	4	154
1983	935	1	122
1984	922	2	139
1985	1,114	1	168
1986	1,035	1	131
1987	1,065	-	122
1988	1,027	4	108
1989	1,224	1	182
1990	1,189	2	234
1991	1,055	2	218
1992	1,027	4	153
1993	1,033	2	178
1994	986	3	215
1995	893	5	227
1996	677	1	182
1997	786	5	135
1998	966	3	176
1999	898	4	195
2000	913	-	182
2001	880	3	179
2002	853	1	185
2003	844	2	178
2004	903	-	178
2005	865	-	178
2006	838	-	198

CRIME

TABLE 27: Criminal Offences, 1999 - 2007

<u>CAUSE OF INJURY</u>	<u>1999/00</u>	<u>2000/01</u>	<u>2001/02</u>	<u>2002/03</u>	<u>2003/04</u>	<u>2004/05</u>	<u>2005/06</u>	<u>2006/07</u>
Assault on Police	7	23	12	47	39	36	27	39
Violence Against the Person	90	59	197	146	187	142	104	113
Sexual Offences	27	15	24	13	37	20	12	19
Theft, Burglary, Robbery etc.	927	640	905	614	876	749	735	407
Criminal Damage	494	505	534	423	647	584	645	516
Dangerous Drugs	319	340	392	432	436	447	479	471
Deception Related Offences	69	73	66	67	148	62	63	46
Other Offences	34	23	60	29	39	30	28	17
TOTAL CRIMINAL OFFENCES	1,967	1,678	2,190	1,771	2,409	2,070	2,093	1,628

TABLE 28: Industrial Accidents by Cause of Injury, 1998 - 2006

<u>CAUSE OF INJURY</u>	<u>1998</u>	<u>1999</u>	<u>2000</u>	<u>2001</u>	<u>2002*</u>	<u>2003*</u>	<u>2004*</u>	<u>2005</u>	<u>2006</u>
Machinery	17	27	24	18	46	22	29	37	35
Explosives	2	2	-	2	-	1	-	1	-
Electricity	2	1	-	1	-	1	4	2	-
Falls of Persons	57	60	90	50	54	70	72	95	87
Falling Objects	26	18	25	9	24	22	33	16	27
Stepping on and Striking objects, Objects striking persons	15	34	35	14	10	42	32	25	30
Handtools	19	4	10	8	26	13	23	15	17
Handling without Machinery	53	46	50	46	43	49	59	55	79
Vehicles	16	1	1	-	7	9	7	7	15
Others	37	7	8	18	22	15	17	19	24
TOTAL	244	200	243	166	232	244	276	272	314

Notes: (i) Figures relate to industrial accidents compensated under the Employment Injuries Insurance Ordinance.

(ii) "Others" refers to causes such as "poisonous substances", "ships" etc.

*(iii)*Changes in respect to the years 2002, 2003 and 2004 are due to a reclassification in the compilation of these statistics by the Department of Social Security.*

FIRE STATISTICS

TABLE 29: Number of Calls Handled, 1999 - 2006

<u>TYPE OF CALL</u>	<u>1999</u>	<u>2000</u>	<u>2001</u>	<u>2002</u>	<u>2003</u>	<u>2004</u>	<u>2005</u>	<u>2006</u>
Fires	204	200	181	176	200	152	156	161
Special Services (i)	850	872	998	880	886	804	784	797
False Alarms	266	290	344	283	336	279	284	266
TOTAL	1,320	1,362	1,523	1,339	1,422	1,235	1,224	1,224

*Notes: (i) Special Services refer to life rescues, pumping out flooded premises, oil pollution incidents etc.
(ii) Figures relate to the number of calls handled by the City Fire Brigade and exclude ambulance attendances.*

NUMBER OF CALLS HANDLED, 1999 - 2006

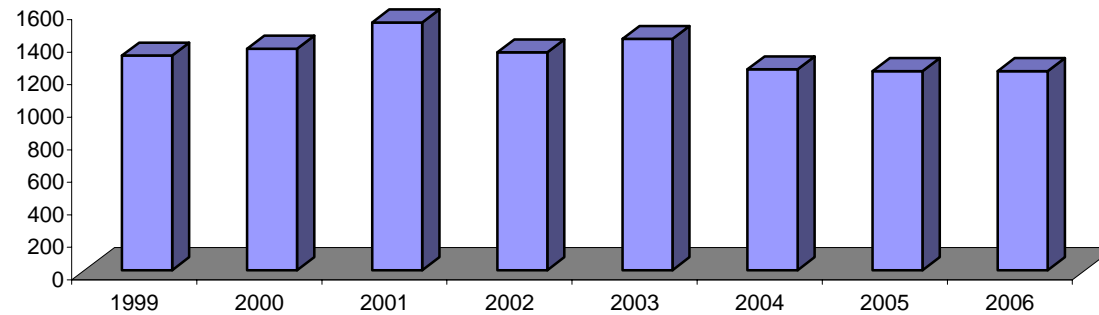


TABLE 30: Hazard Classification of Fires Attended, 1999 - 2006

<u>TYPE OF CALL</u>	<u>1999</u>	<u>2000</u>	<u>2001</u>	<u>2002</u>	<u>2003</u>	<u>2004</u>	<u>2005</u>	<u>2006</u>
Electrical	27	36	20	17	16	12	12	5
Buildings	46	42	65	64	82	55	70	71
Vegetation/Refuse	90	68	48	46	60	48	43	51
Motor Vehicles	16	25	22	21	23	17	11	17
Miscellaneous (ii)	25	29	26	28	19	20	20	17
TOTAL	204	200	181	176	200	152	156	161

*Notes : (i) Figures relate to the number of fires attended by the City Fire Brigade.
(ii) Includes motor vessels.*

TABLE 31: Analysis of Special Services Attended, 2004 - 2006

<u>TYPE OF CALL</u>	<u>2004</u>		<u>2005</u>		<u>2006</u>	
	<u>EMERGENCIES</u>	<u>REQUESTS</u>	<u>EMERGENCIES</u>	<u>REQUESTS</u>	<u>EMERGENCIES</u>	<u>REQUESTS</u>
Lift Rescues	243	-	217	-	249	-
Road Traffic Accidents	65	-	50	-	40	-
Entry into Locked Premises	35	196	21	175	15	215
Pumping Flooded Premises, Motor Vessels etc.	19	2	14	6	12	4
Rescue of Persons	7	-	8	-	5	-
Miscellaneous	53	136	77	169	45	172
Stand-By Jobs	-	-	1	-	-	-
Oil Pollution Incidents/ Fuel Leaks	4	35	5	26	1	26
Rescue of Animals	-	9	-	15	-	13
TOTAL	426	378	393	391	367	430
<u>TOTAL FOR YEAR</u>	<u>804</u>		<u>784</u>		<u>797</u>	

TABLE 32: Supposed Causes of Fire, 2006

<u>CAUSE</u>	<u>NUMBER</u>
Accidental by Person	12
Cooking Pot, Frying Pan, Grill or Oven Left Unattended	18
Careless Disposal of Smoking Items (Cigarettes, Matches etc.)	23
Defective Electrical Appliance or Electrical Installation	24
Arching Fuse-Box or Medium/High Voltage Cables	9
Defective Apparatus or Device of Motor Vehicle	11
Children Playing with Fire	7
Authorised Control, Burning not totally extinguished	1
Unauthorised Burning	4
Sparks from Hot Works, Grinder etc.	3
Fireworks	-
Deliberate Ignition/Suspected Arson	8
Overheated Materials, Oils Grease etc.	7
Spontaneous Combustion	2
Other Known Causes not specified above	6
Cause of Ignition Unknown	26
TOTAL	161

Note : The supposed cause of fire is determined by the Officer-in-Charge attending the incidents.

CIVIL ADMINISTRATION

PRISON STATISTICS

TABLE 33: Receptions into Prison and Population in Custody, 1996 - 2006

<u>YEAR</u>	<u>RECEPTIONS</u>	<u>POPULATION IN CUSTODY ON 31 DECEMBER</u>	<u>DISCHARGE</u>
1996	278	26	281
1997	230	27	229
1998	171	19	179
1999	170	24	165
2000	215	18	221
2001	218	13	223
2002	246	21	238
2003	196	27	190
2004	157	19	165
2005	192	27	184
2006	202	30	199

RECEPTIONS INTO PRISON, 1996 - 2006

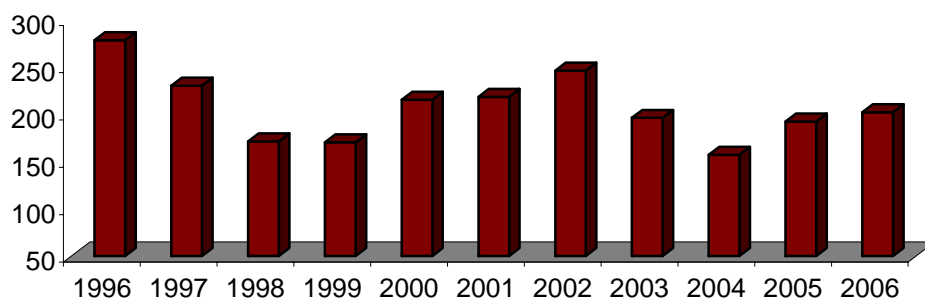
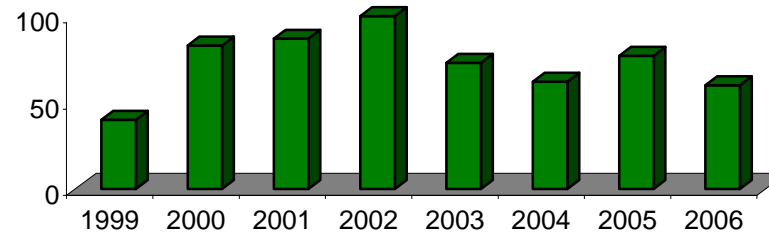


TABLE 34: Receptions into Prison by Age, 1999 - 2006

<u>AGE GROUP</u>	<u>1999</u>	<u>2000</u>	<u>2001</u>	<u>2002</u>	<u>2003</u>	<u>2004</u>	<u>2005</u>	<u>2006</u>
Under 16	6	4	6	1	0	0	2	8
16 - 20	12	30	43	47	36	35	32	25
20 - 25	28	53	44	53	37	27	45	35
25 - 50	116	120	117	128	109	85	104	123
50 and over	8	8	8	17	14	10	9	11
TOTAL	170	215	218	246	196	157	192	202

RECEPTIONS INTO PRISON BY AGE 16 - 25, 1999 - 2006



EMPLOYMENT

TABLE 35: No. of Employee Jobs by Sex, Nationality, Sector and Occupation, Oct 2005/Oct 2006

		<u>NUMBER OF EMPLOYEE JOBS</u>	
	<u>CLASSIFICATION</u>	<u>OCTOBER 2005</u>	<u>OCTOBER 2006</u>
	All Employee Jobs (i)	16,874	18,485
Sex	Male	9,806	10,811
	Female	7,068	7,674
Nationality	Gibraltarian	9,870	10,346
	Other	7,004	8,139
Sector (ii)	Official	4,062	3,973
	Private	12,812	14,512
Occupation Group (iii)	Managers and Senior Officials	2,071	2,518
	Professional	1,085	1,144
	Associate Professional and Technical	1,882	2,166
	Administrative and Secretarial	3,208	3,365
	Skilled Trades	1,775	1,804
	Personal Service	772	788
	Sales and Customer Service	1,917	2,161
	Process, Plant and Machine Operatives	1,129	1,266
	Elementary	3,035	3,273

Notes: (i) As in the UK and as from October 1998, the Employment Survey makes reference to the number of employee jobs in the labour market, formerly known as the number of persons in employment. Thus a person holding both a full-time and a part-time job would be included in the count for each category.

(ii) "Official" sector refers to the Gibraltar Government and the U.K. Government Departments.

(iii) Occupations are classified according to the "Standard Occupational Classification 2000".

TABLE 36: Number of Employee Jobs by Industry, October 2005 and October 2006

	<u>NUMBER OF EMPLOYEE JOBS</u>	
<u>INDUSTRY (i)</u>	<u>OCTOBER 2005</u>	<u>OCTOBER 2006</u>
Shipbuilding	256	268
Other Manufacture	174	192
Electricity and Water Supply	273	295
Construction	1,861	2,124
Wholesale and Retail Trade	2,693	2,747
Hotels and Restaurants	1,032	1,067
Transport and Communication	963	1,042
Financial Intermediation	1,440	1,738
Real Estate and Business Activities	1,846	2,059
Public Administration and Defence	2,160	2,214
Education	780	804
Health and Social Work	1,353	1,438
Other Services	2,043	2,497
TOTAL	16,874	18,485

Note: (i) The industry classification follows that of the UK's Standard Industrial Classification (S.I.C. 92).

TABLE 37: Number of Weekly-Paid Employee Jobs, October 2006

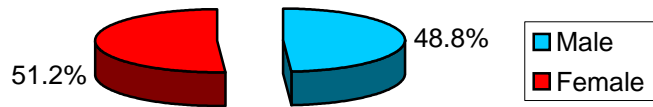
	<u>FULL-TIME</u>			<u>PART-TIME</u>			<u>TOTAL</u>		
	<u>OFFICIAL</u>	<u>PRIVATE</u>	<u>TOTAL</u>	<u>OFFICIAL</u>	<u>PRIVATE</u>	<u>TOTAL</u>	<u>OFFICIAL</u>	<u>PRIVATE</u>	<u>TOTAL</u>
Adult Male	263	3,165	3,428	10	266	276	273	3,431	3,704
Adult Female	94	1,150	1,244	192	670	862	286	1,820	2,106
Juvenile Male	-	13	13	-	10	10	-	23	23
Juvenile Female	-	9	9	-	7	7	-	16	16
TOTAL	357	4,337	4,694	202	953	1,155	559	5,290	5,849

TABLE 38: Number of Monthly-Paid Employee Jobs, October 2006

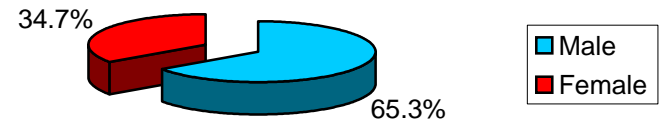
	<u>FULL-TIME</u>			<u>PART-TIME</u>			<u>TOTAL</u>		
	<u>OFFICIAL</u>	<u>PRIVATE</u>	<u>TOTAL</u>	<u>OFFICIAL</u>	<u>PRIVATE</u>	<u>TOTAL</u>	<u>OFFICIAL</u>	<u>PRIVATE</u>	<u>TOTAL</u>
Adult Male	1,864	4,664	6,528	20	482	502	1,884	5,146	7,030
Adult Female	1,272	3,008	4,280	255	965	1,220	1,527	3,973	5,500
Juvenile Male	2	49	51	-	3	3	2	52	54
Juvenile Female	1	46	47	-	5	5	1	51	52
TOTAL	3,139	7,767	10,906	275	1,455	1,730	3,414	9,222	12,636

Weekly-Paid and Monthly-Paid Employee Jobs by Sector and Sex, October 2006

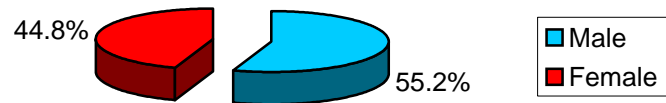
OFFICIAL SECTOR WEEKLY-PAID EMPLOYEE JOBS



PRIVATE SECTOR WEEKLY-PAID EMPLOYEE JOBS



OFFICIAL SECTOR MONTHLY-PAID EMPLOYEE JOBS



PRIVATE SECTOR MONTHLY-PAID EMPLOYEE JOBS

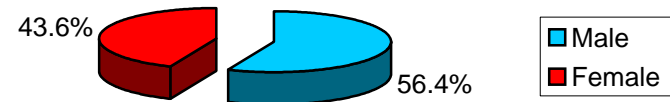


TABLE 39: Average Annual Earnings and Index, All Employee Jobs, 1980 - 2006

<u>DATE</u>		<u>AVERAGE EARNINGS</u> (£)	<u>INDEX</u>
April	1980	4,257.46	100.0
October	1980	4,965.90	116.6
April	1981	5,042.56	118.4
October	1981	5,526.43	129.8
April	1982	5,929.44	139.3
October	1982	5,922.95	139.1
April	1983	5,532.11	129.9
October	1983	6,260.21	147.0
April	1984	6,309.29	148.2
October	1984	6,555.39	154.0
April	1985	6,526.62	153.3
October	1985	6,912.33	162.4
April	1986	7,035.17	165.2
October	1986	7,358.02	172.8
April	1987	7,802.00	183.3
October	1987	8,009.93	188.1
April	1988	8,363.85	196.5
October	1988	9,096.31	213.7
April	1989	9,593.92	225.3
October	1989	9,797.68	230.1
April	1990	10,073.99	236.6
October	1990	10,505.23	246.7
April	1991	10,936.11	256.9
October	1991	11,695.37	274.7
April	1992	11,966.09	281.1
October	1992	12,420.62	291.7
April	1993	12,267.22	288.1
October	1993	12,138.22	285.1
April	1994	12,228.87	287.2
October	1994	12,690.69	298.1
April	1995	12,787.56	300.4
October	1995	13,302.94	312.5
April	1996	13,037.86	306.2
October	1996	13,516.60	317.5
April	1997	13,532.35	317.9
October	1997	13,524.87	317.7
April	1998	13,993.45	328.7
October	1998	14,394.72	338.1
October	1999	14,874.91	349.4
October	2000	15,164.52	356.2
October	2001	16,199.42	380.5
October	2002	16,802.96	394.7
October	2003	17,460.44	410.1
October	2004	17,834.25	418.9
October	2005	19,383.80	455.3
October	2006	20,470.57	480.8

TABLE 40: Total Number of Employee Jobs, April 1980 - October 2006

<u>DATE</u>	<u>NUMBER</u>	<u>INDEX</u>
April 1980	11,506	100.0
October 1980	11,841	102.9
April 1981	11,775	102.3
October 1981	11,655	101.3
April 1982	11,661	101.3
October 1982	11,647	101.2
April 1983	11,720	101.9
October 1983	11,490	99.9
April 1984	11,063	96.1
October 1984	11,115	96.6
April 1985	11,291	98.1
October 1985	11,626	101.0
April 1986	11,869	103.2
October 1986	12,507	108.7
April 1987	12,819	111.4
October 1987	13,078	113.7
April 1988	12,995	112.9
October 1988	13,610	118.3
April 1989	13,974	121.4
October 1989	13,880	120.6
April 1990	13,843	120.3
October 1990	14,219	123.6
April 1991	14,782	128.5
October 1991	15,098	131.2
April 1992	14,710	127.8
October 1992	14,754	128.2
April 1993	14,284	124.1
October 1993	13,521	117.5
April 1994	12,868	111.8
October 1994	12,795	111.2
April 1995	12,702	110.4
October 1995	12,713	110.5
April 1996	12,980	112.8
October 1996	12,975	112.8
April 1997	13,000	113.0
October 1997	12,762	110.9
April 1998	12,840	111.6
October 1998	12,774	111.0
October 1999	12,936	112.4
October 2000	13,381	116.3
October 2001	13,931	121.1
October 2002	14,266	124.0
October 2003	15,419	134.0
October 2004	15,994	139.0
October 2005	16,874	146.7
October 2006	18,485	160.7

TABLE 41: Number of Employee Jobs by S. I. C. (92) Sections, October 2006

S. I. C. (92) INDUSTRY SECTION

A	Agriculture, Hunting and Forestry	-
B	Fishing	-
C	Mining and Quarrying	-
D	Manufacturing	460
E	Electricity, Gas and Water Supply	295
F	Construction	2,124
G	Wholesale and Retail Trade; Repair of Consumer Goods	2,747
H	Hotels and Restaurants	1,067
I	Transport, Storage and Communication	1,042
J	Financial Intermediation	1,738
K	Real Estate, Renting and Business Activities	2,059
L	Public Administration and Defence	2,214
M	Education	804
N	Health and Social Work	1,438
O-Q	Other Community, Social and Personal Service Activities	2,497
TOTAL		18,485

NUMBER OF EMPLOYEE JOBS, OCTOBER 2006

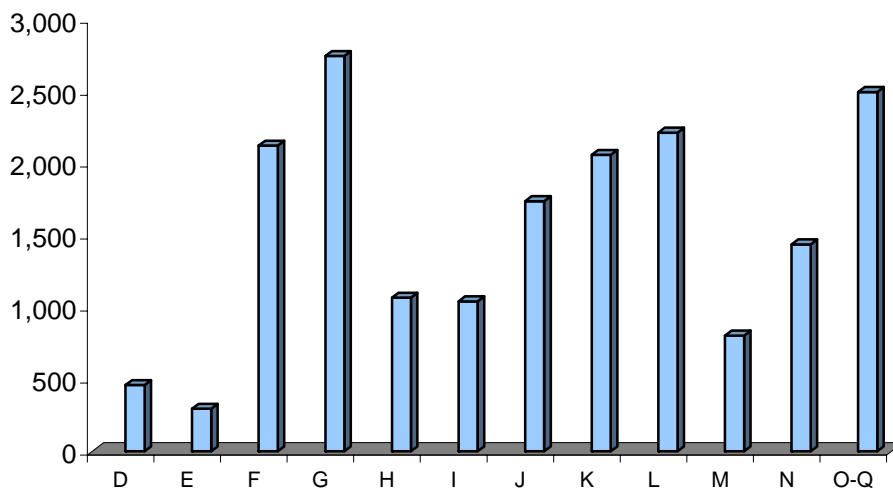


TABLE 42(a): Full-Time Monthly-Paid Adult Employee Jobs, 1983 - 2006

<u>Date</u>	<u>Full-time Monthly-Paid Adult Male Employee Jobs</u>		<u>Full-time Monthly-Paid Adult Female Employee Jobs</u>	
	<u>Nos Employed</u>	<u>Average Earnings</u>	<u>Nos Employed</u>	<u>Average Earnings</u>
October 1983	2,936	£725.32	1,134	£501.51
April 1984	2,820	£742.85	1,166	£494.74
October 1984	2,844	£786.43	1,180	£501.60
April 1985	2,811	£796.39	1,258	£523.53
October 1985	2,948	£826.32	1,288	£536.57
April 1986	2,900	£849.71	1,370	£565.05
October 1986	3,018	£870.67	1,452	£570.03
April 1987	3,116	£943.54	1,642	£638.58
October 1987	3,121	£980.76	1,674	£651.08
April 1988	3,242	£1,036.49	1,730	£702.34
October 1988	3,457	£1,108.04	1,970	£731.21
April 1989	3,517	£1,157.21	1,971	£750.24
October 1989	3,511	£1,182.64	2,064	£776.57
April 1990	3,624	£1,252.01	2,116	£818.98
October 1990	3,640	£1,295.47	2,161	£864.18
April 1991	3,779	£1,387.36	2,212	£890.23
October 1991	3,953	£1,408.44	2,173	£968.81
April 1992	3,966	£1,464.86	2,208	£984.70
October 1992	4,303	£1,430.98	2,197	£1,003.45
April 1993	4,151	£1,458.76	2,187	£1,029.18
October 1993	3,905	£1,445.94	2,252	£1,020.64
April 1994	3,790	£1,466.76	2,232	£1,037.85
October 1994	3,885	£1,477.47	2,220	£1,074.46
April 1995	3,919	£1,488.17	2,263	£1,069.28
October 1995	4,017	£1,609.66	2,250	£1,094.07
April 1996	4,129	£1,515.47	2,260	£1,105.37
October 1996	4,241	£1,537.92	2,295	£1,126.61
April 1997	4,297	£1,574.75	2,301	£1,172.81
October 1997	4,283	£1,538.35	2,349	£1,171.38
April 1998	4,211	£1,599.48	2,371	£1,216.81
October 1998	3,695	£1,828.50	2,329	£1,267.23
October 1999	3,766	£1,856.56	2,548	£1,321.52
October 2000	3,935	£1,892.56	2,908	£1,361.63
October 2001	3,991	£2,027.50	2,954	£1,427.46
October 2002	4,548	£2,060.40	3,109	£1,457.66
October 2003	4,829	£2,167.52	3,460	£1,529.43
October 2004	5,278	£2,211.53	3,672	£1,586.88
October 2005	5,777	£2,393.16	3,967	£1,655.60
October 2006	6,528	£2,444.31	4,280	£1,717.76

TABLE 42(b): Full-Time Weekly-Paid Adult Employee Jobs, 1983 - 2006

<u>Date</u>	<u>Full-time Weekly-Paid Adult Male Employee Jobs</u>		<u>Full-time Weekly-Paid Adult Female Employee Jobs</u>	
	<u>Nos Employed</u>	<u>Average Earnings</u>	<u>Nos Employed</u>	<u>Average Earnings</u>
October 1983	5,050	£121.70	1,311	£75.78
April 1984	4,784	£121.37	1,201	£77.22
October 1984	4,816	£125.58	1,254	£75.36
April 1985	4,768	£123.10	1,180	£82.74
October 1985	4,840	£133.99	1,222	£86.24
April 1986	4,952	£134.05	1,486	£84.13
October 1986	5,283	£143.49	1,489	£91.06
April 1987	5,373	£147.99	1,453	£90.68
October 1987	5,406	£151.40	1,531	£95.60
April 1988	5,173	£153.35	1,528	£99.29
October 1988	5,357	£172.23	1,441	£106.66
April 1989	5,597	£182.61	1,474	£117.90
October 1989	5,232	£186.45	1,410	£124.25
April 1990	4,950	£187.39	1,420	£125.56
October 1990	5,149	£197.77	1,392	£132.65
April 1991	5,524	£198.68	1,428	£143.85
October 1991	5,645	£224.54	1,380	£145.65
April 1992	5,325	£218.59	1,267	£154.03
October 1992	5,027	£236.05	1,330	£160.71
April 1993	4,695	£219.62	1,291	£162.85
October 1993	4,209	£220.79	1,375	£156.13
April 1994	3,849	£217.16	1,297	£154.41
October 1994	3,622	£235.34	1,225	£162.85
April 1995	3,568	£233.94	1,176	£163.07
October 1995	3,522	£230.94	1,188	£164.45
April 1996	3,559	£232.03	1,173	£166.49
October 1996	3,532	£249.31	1,227	£172.15
April 1997	3,527	£229.49	1,179	£175.31
October 1997	3,400	£233.03	1,232	£165.26
April 1998	3,516	£239.05	1,236	£174.71
October 1998	3,581	£248.51	1,169	£185.74
October 1999	3,307	£262.75	1,118	£198.40
October 2000	3,276	£258.39	1,091	£200.45
October 2001	3,606	£284.98	1,162	£199.37
October 2002	3,247	£285.22	1,081	£196.95
October 2003	3,399	£300.44	1,164	£203.86
October 2004	3,362	£292.56	1,144	£210.50
October 2005	3,297	£316.41	1,143	£216.39
October 2006	3,428	£347.28	1,244	£234.16

TABLE 43(a): Full-Time Monthly-Paid Adult Employee Jobs, Official Sector, 1983 - 2006**OFFICIAL**

		<u>Full-time Monthly-Paid Adult Male Employee Jobs</u>		<u>Full-time Monthly-Paid Adult Female Employee Jobs</u>	
<u>Date</u>		<u>Employee Jobs</u>	<u>Average Earnings</u>	<u>Employee Jobs</u>	<u>Average Earnings</u>
October	1983	2,046	£789.96	880	£532.69
April	1984	1,976	£796.75	862	£529.35
October	1984	1,961	£848.06	854	£537.92
April	1985	1,868	£835.88	901	£559.36
October	1985	1,895	£875.99	888	£575.97
April	1986	1,904	£894.87	930	£604.57
October	1986	1,867	£917.52	950	£596.39
April	1987	1,877	£976.49	1,037	£680.46
October	1987	1,879	£1,031.29	1,028	£711.66
April	1988	1,963	£1,073.53	994	£758.10
October	1988	1,975	£1,170.57	1,105	£799.34
April	1989	1,909	£1,212.02	1,080	£799.97
October	1989	1,915	£1,248.70	1,091	£848.49
April	1990	1,997	£1,331.19	1,031	£920.47
October	1990	1,835	£1,389.42	1,066	£963.98
April	1991	1,769	£1,469.55	1,049	£984.37
October	1991	1,779	£1,463.57	1,010	£1,079.78
April	1992	1,674	£1,566.48	1,015	£1,128.54
October	1992	1,561	£1,648.40	942	£1,202.88
April	1993	1,524	£1,691.74	943	£1,222.16
October	1993	1,436	£1,728.86	950	£1,224.67
April	1994	1,436	£1,717.51	937	£1,222.69
October	1994	1,464	£1,775.08	937	£1,259.43
April	1995	1,450	£1,816.10	925	£1,266.64
October	1995	1,436	£2,198.66	906	£1,306.35
April	1996	1,457	£1,914.32	911	£1,314.72
October	1996	1,475	£1,983.88	897	£1,392.06
April	1997	1,502	£1,998.45	929	£1,396.48
October	1997	1,534	£1,965.64	920	£1,407.26
April	1998	1,545	£2,010.83	930	£1,437.03
October	1998	1,497	£2,069.59	929	£1,507.55
October	1999	1,433	£2,162.54	998	£1,586.17
October	2000	1,473	£2,252.48	1,077	£1,588.92
October	2001	1,443	£2,429.33	1,065	£1,739.10
October	2002	1,887	£2,320.06	1,172	£1,748.52
October	2003	1,937	£2,503.46	1,257	£1,841.51
October	2004	2,024	£2,520.22	1,219	£1,926.43
October	2005	2,010	£2,704.88	1,265	£2,007.28
October	2006	1,864	£2,765.46	1,272	£2,062.61

Source: Statistics Office

TABLE 43(b): Full-Time Weekly-Paid Adult Employee Jobs, Official Sector, 1983 - 2006**OFFICIAL**

		<u>Full-time Weekly-Paid Adult Male Employee Jobs</u>		<u>Full-time Weekly-Paid Adult Female Employee Jobs</u>	
<u>Date</u>		<u>Employee Jobs</u>	<u>Average Earnings</u>	<u>Employee Jobs</u>	<u>Average Earnings</u>
October	1983	3,368	£130.09	555	£90.28
April	1984	3,213	£127.75	567	£91.14
October	1984	3,107	£132.06	490	£90.55
April	1985	2,614	£123.23	455	£94.62
October	1985	2,618	£130.02	448	£97.50
April	1986	2,531	£141.29	619	£88.93
October	1986	2,527	£148.80	618	£92.91
April	1987	2,515	£146.64	604	£92.08
October	1987	2,426	£156.12	578	£99.30
April	1988	2,455	£155.44	588	£100.88
October	1988	2,431	£165.13	462	£115.85
April	1989	2,380	£179.40	439	£123.99
October	1989	2,235	£191.81	388	£136.57
April	1990	2,104	£182.57	383	£131.31
October	1990	2,032	£200.75	393	£143.28
April	1991	1,930	£195.65	372	£155.98
October	1991	1,828	£238.18	335	£157.14
April	1992	1,569	£218.39	306	£157.00
October	1992	1,576	£244.28	313	£165.57
April	1993	1,542	£214.36	283	£171.69
October	1993	1,375	£215.91	295	£168.03
April	1994	1,147	£216.20	276	£168.17
October	1994	1,067	£253.87	269	£166.15
April	1995	1,042	£250.78	257	£172.58
October	1995	1,021	£250.93	273	£165.11
April	1996	952	£265.68	264	£173.56
October	1996	958	£309.52	269	£203.23
April	1997	926	£245.12	261	£193.68
October	1997	886	£261.04	270	£177.00
April	1998	851	£260.87	268	£192.44
October	1998	875	£265.56	255	£206.63
October	1999	782	£314.08	236	£233.56
October	2000	768	£282.40	229	£227.54
October	2001	764	£338.50	240	£241.69
October	2002	368	£391.50	108	£257.72
October	2003	352	£481.46	114	£313.98
October	2004	283	£360.98	102	£320.31
October	2005	281	£382.57	96	£320.79
October	2006	263	£379.80	94	£328.96

TABLE 44(a): Full-Time Monthly-Paid Adult Employee Jobs, Private Sector, 1983 - 2006**PRIVATE**

		<u>Full-time Monthly-Paid Adult Male Employee Jobs</u>		<u>Full-time Monthly-Paid Adult Female Employee Jobs</u>	
<u>Date</u>		<u>Employee Jobs</u>	<u>Average Earnings</u>	<u>Employee Jobs</u>	<u>Average Earnings</u>
October	1983	890	£589.06	254	£397.65
April	1984	844	£626.06	304	£398.72
October	1984	883	£658.97	326	£409.22
April	1985	943	£722.99	357	£435.92
October	1985	1,053	£743.26	400	£451.86
April	1986	996	£769.37	440	£483.85
October	1986	1,151	£800.45	502	£522.51
April	1987	1,239	£897.46	605	£568.97
October	1987	1,242	£909.00	646	£557.31
April	1988	1,279	£983.47	736	£629.84
October	1988	1,482	£1,031.69	865	£647.25
April	1989	1,608	£1,096.66	891	£692.31
October	1989	1,596	£1,108.52	973	£698.36
April	1990	1,627	£1,161.53	1,085	£725.47
October	1990	1,805	£1,208.11	1095	£771.42
April	1991	2,010	£1,320.25	1,163	£808.04
October	1991	2,174	£1,366.62	1,163	£876.06
April	1992	2,292	£1,394.65	1193	£865.58
October	1992	2,742	£1,305.73	1,255	£853.71
April	1993	2,627	£1,322.54	1,244	£883.25
October	1993	2,469	£1,277.54	1,302	£868.79
April	1994	2,354	£1,310.25	1,295	£902.00
October	1994	2,421	£1,295.38	1283	£937.27
April	1995	2,469	£1,293.26	1338	£931.42
October	1995	2,581	£1,281.96	1344	£950.96
April	1996	2,672	£1,297.90	1349	£964.35
October	1996	2,766	£1,300.24	1398	£957.46
April	1997	2,795	£1,347.05	1372	£1,022.33
October	1997	2,749	£1,299.51	1,429	£1,018.63
April	1998	2,666	£1,361.08	1,441	£1,073.49
October	1998	2,198	£1,660.48	1,400	£1,107.99
October	1999	2,333	£1,669.11	1,550	£1,151.06
October	2000	2,462	£1,679.14	1,831	£1,229.70
October	2001	2,548	£1,799.60	1,889	£1,253.13
October	2002	2,661	£1,877.47	1,937	£1,283.62
October	2003	2,892	£1,942.32	2,203	£1,351.54
October	2004	3,254	£2,019.12	2,453	£1,418.78
October	2005	3,767	£2,226.07	2,702	£1,495.04
October	2006	4,664	£2,314.41	3,008	£1,570.36

TABLE 44(b): Full-Time Weekly-Paid Adult Employee Jobs, Private Sector, 1983 - 2006**PRIVATE**

		<u>Full-time Weekly-Paid Adult Male Employee Jobs</u>		<u>Full-time Weekly-Paid Adult Female Employee Jobs</u>	
<u>Date</u>		<u>Employee Jobs</u>	<u>Average Earnings</u>	<u>Employee Jobs</u>	<u>Average Earnings</u>
October	1983	1,682	£105.01	756	£65.32
April	1984	1,571	£108.35	634	£64.81
October	1984	1,715	£113.78	764	£65.51
April	1985	2,154	£122.93	725	£74.83
October	1985	2,222	£138.63	774	£79.75
April	1986	2,421	£126.47	867	£80.70
October	1986	2,756	£138.51	871	£89.75
April	1987	2,858	£149.17	849	£89.69
October	1987	2,980	£147.60	953	£93.36
April	1988	2,718	£171.47	940	£98.30
October	1988	2,926	£178.28	979	£102.37
April	1989	3,217	£184.96	1,035	£115.32
October	1989	2,997	£182.53	1,022	£119.66
April	1990	2,846	£190.93	1,037	£123.44
October	1990	3,117	£195.88	999	£128.64
April	1991	3,594	£200.23	1,056	£139.83
October	1991	3,817	£218.40	1,045	£142.14
April	1992	3,756	£218.66	961	£153.06
October	1992	3,451	£232.24	1,017	£159.21
April	1993	3,153	£222.24	1,008	£160.33
October	1993	2,834	£223.18	1,080	£152.80
April	1994	2,702	£217.57	1,021	£150.66
October	1994	2,555	£227.47	956	£161.91
April	1995	2,526	£225.99	919	£160.37
October	1995	2,501	£222.78	915	£164.24
April	1996	2,607	£219.54	909	£164.41
October	1996	2,574	£266.74	958	£162.88
April	1997	2,601	£220.30	918	£167.41
October	1997	2,514	£223.16	962	£161.97
April	1998	2,665	£232.08	968	£169.81
October	1998	2,706	£243.23	914	£180.00
October	1999	2,525	£247.42	882	£189.21
October	2000	2,508	£251.09	862	£193.32
October	2001	2,842	£270.28	922	£188.34
October	2002	2,879	£271.45	973	£190.18
October	2003	3,047	£279.48	1,050	£192.39
October	2004	3,079	£286.23	1,042	£199.80
October	2005	3,016	£310.32	1,047	£207.57
October	2006	3,165	£344.54	1,150	£226.40

Table 45: Distribution of Average Annual Earnings of All Employee Jobs, October 2006

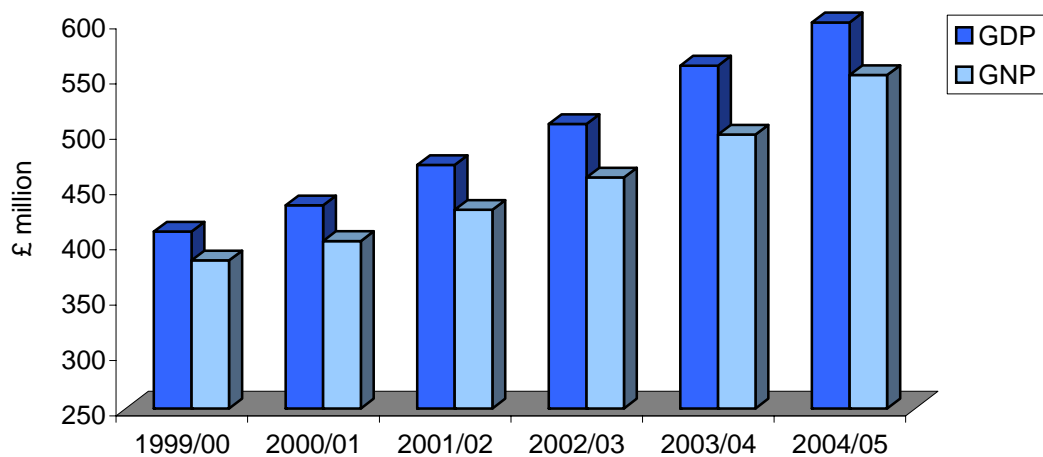
£ PER ANNUM	<u>ALL EMPLOYEE JOBS</u>			<u>ALL MALE JOBS</u>			<u>ALL FEMALE JOBS</u>		
	<u>Full-Time</u>	<u>Part-Time</u>	<u>Total</u>	<u>Full-Time</u>	<u>Part-Time</u>	<u>Total</u>	<u>Full-Time</u>	<u>Part-Time</u>	<u>Total</u>
0 - 999	2	14	16	1	4	5	1	10	11
1,000 - 1,499	2	10	12	1	2	3	1	8	9
1,500 - 1,999	2	28	30	1	8	9	1	20	21
2,000 - 2,499	5	44	49	2	9	11	3	35	38
2,500 - 2,999	5	107	112	1	16	17	4	91	95
3,000 - 3,999	84	522	606	49	105	154	35	417	452
4,000 - 4,999	59	533	592	38	361	399	21	172	193
5,000 - 5,999	130	228	358	74	54	128	56	174	230
6,000 - 6,999	87	243	330	33	41	74	54	202	256
7,000 - 7,999	179	346	525	51	47	98	128	299	427
8,000 - 8,999	236	157	393	82	29	111	154	128	282
9,000 - 9,999	786	115	901	345	26	371	441	89	530
10,000 - 10,999	671	79	750	387	9	396	284	70	354
11,000 - 11,999	579	90	669	359	7	366	220	83	303
12,000 - 12,999	803	73	876	504	20	524	299	53	352
13,000 - 13,999	827	47	874	538	6	544	289	41	330
14,000 - 14,999	783	43	826	494	6	500	289	37	326
15,000 - 17,499	2,125	61	2,186	1,254	8	1,262	871	53	924
17,500 - 19,999	1,547	57	1,604	961	8	969	586	49	635
20,000 - 22,499	1,161	29	1,190	713	10	723	448	19	467
22,500 - 24,999	905	20	925	595	4	599	310	16	326
25,000 - 29,999	1,300	20	1,320	867	7	874	433	13	446
30,000 and over	3,322	19	3,341	2670	4	2,674	652	15	667
TOTAL	15,600	2,885	18,485	10,020	791	10,811	5,580	2,094	7,674

NATIONAL INCOME

TABLE 46: National Income, 1999 - 2005

<u>YEAR</u>	<u>£ million</u>		<u>£</u>	
	<u>GDP (factor cost)</u>	<u>GNP (factor cost)</u>	<u>GDP (factor cost per capita)</u>	<u>GNP (factor cost per capita)</u>
1999/00	409.89	383.82	15,091	14,131
2000/01	433.61	401.44	15,863	14,686
2001/02	470.18	429.65	16,608	15,177
2002/03	507.17	458.94	17,770	16,080
2003/04	560.06	497.59	19,552	17,372
2004/05	599.18	551.50	20,831	19,173

GDP AND GNP, 1999 - 2005



INDEX OF RETAIL PRICES

TABLE 47: Index of Retail Prices: All Items, 1996 - 2007

<u>MONTH</u>	<u>JAN 1966</u> <u>100</u>	<u>JUL 1970</u> <u>100</u>	<u>JUL 1973</u> <u>100</u>	<u>OCT 1980</u> <u>100</u>	<u>APR 1998</u> <u>100</u>	<u>% YEARLY</u> <u>INCREASE</u>
July 1996	1010.68	794.35	592.16	215.69	-	2.3
October	1010.54	794.24	592.08	215.66	-	1.8
January 1997	1013.44	796.52	593.78	216.28	-	2.1
April	1022.00	803.25	598.80	218.11	-	1.3
July	1023.08	804.10	599.43	218.34	-	1.2
October	1027.86	807.86	602.23	219.36	-	1.7
January 1998	1025.66	806.13	600.94	218.89	-	1.2
April	1029.92	809.48	603.44	219.80	100.00	0.8
July	1033.73	812.48	605.67	220.61	100.37	1.0
October	1042.38	819.28	610.74	222.46	101.21	1.4
January 1999	1042.99	819.76	611.10	222.59	101.27	1.7
April	1038.05	815.87	608.20	221.53	100.79	0.8
July	1039.90	817.33	609.29	221.93	100.97	0.6
October	1044.23	820.73	611.82	222.85	101.39	0.2
January 2000	1044.54	820.97	612.00	222.92	101.42	0.1
April	1050.62	825.75	615.56	224.22	102.01	1.2
July	1057.01	830.77	619.30	225.58	102.63	1.6
October	1058.45	831.90	620.14	225.89	102.77	1.4
January 2001	1054.64	828.90	617.91	225.08	102.40	1.0
April	1070.71	841.53	627.32	228.51	103.96	1.9
July	1079.05	848.09	632.21	230.29	104.77	2.1
October	1082.35	850.68	634.14	230.99	105.09	2.3
January 2002	1072.98	843.31	628.65	228.99	104.18	1.7
April	1077.00	846.47	631.00	229.85	104.57	0.6
July	1081.12	849.71	633.41	230.73	104.97	0.2
October	1086.48	853.92	636.55	231.87	105.49	0.4
January 2003	1091.73	858.05	639.63	232.99	106.01	1.7
April	1106.56	869.71	648.32	236.16	107.44	2.7
July	1112.12	874.08	651.58	237.35	107.98	2.9
October	1119.43	879.83	655.86	238.91	108.69	3.0
January 2004	1118.81	879.34	655.50	238.78	108.63	2.5
April	1130.65	888.65	662.44	241.31	109.78	2.2
July	1137.76	894.24	666.60	242.83	110.47	2.3
October	1145.18	900.07	670.94	244.41	111.19	2.3
January 2005	1150.84	904.52	674.26	245.62	111.74	2.9
April	1165.77	916.26	683.01	248.81	113.19	3.1
July	1170.92	920.31	686.03	249.91	113.69	2.9
October	1181.74	928.81	692.37	252.22	114.74	3.2
January 2006	1182.77	929.62	692.97	252.44	114.84	2.8
April	1195.64	939.74	700.51	255.19	116.09	2.6
July	1204.60	946.78	705.76	257.10	116.96	2.9
October	1209.24	950.42	708.48	258.09	117.41	2.3
January 2007	1212.95	953.34	710.65	258.88	117.77	2.6

TABLE 48: Index of Retail Prices (Food and All Items), 1996 - 2007

		<u>FOOD</u>		<u>ALL ITEMS</u>	
		<u>% Quarterly Increase</u>	<u>% Yearly Increase</u>	<u>% Quarterly Increase</u>	<u>% Yearly Increase</u>
July	1996	1.0	3.5	0.1	2.3
October		0.8	4.9	-0.01	1.8
January	1997	-0.2	3.8	0.3	2.1
April		0.5	2.1	0.8	1.3
July		0.2	1.3	0.1	1.2
October		1.2	1.8	0.5	1.7
January	1998	-0.1	1.9	-0.2	1.2
April		1.3	2.7	0.4	0.8
July		-0.03	2.5	0.4	1.0
October		-0.2	1.1	0.8	1.4
January	1999	0.5	1.3	0.1	1.7
April		1.0	1.3	-0.5	0.8
July		-0.1	1.2	0.2	0.6
October		0.6	2.0	0.4	0.2
January	2000	-0.4	1.0	0.03	0.1
April		0.9	1.0	0.6	1.2
July		-0.4	0.7	0.6	1.6
October		0.4	0.5	0.1	1.4
January	2001	1.4	2.3	-0.4	1.0
April		1.3	2.6	1.5	1.9
July		1.1	4.2	0.8	2.1
October		1.0	4.8	0.3	2.3
January	2002	1.4	4.9	-0.9	1.7
April		0.2	3.8	0.4	0.6
July		0.6	3.3	0.4	0.2
October		0.03	2.3	0.5	0.4
January	2003	1.0	1.8	0.5	1.7
April		2.1	3.7	1.4	2.7
July		1.0	4.1	0.5	2.9
October		1.5	5.7	0.7	3.0
January	2004	0.02	4.7	-0.1	2.5
April		1.2	3.7	1.1	2.2
July		1.0	3.8	0.6	2.3
October		-0.5	1.6	0.7	2.3
January	2005	0.5	2.1	0.5	2.9
April		0.7	1.7	1.3	3.1
July		0.6	1.3	0.4	2.9
October		0.9	2.8	0.9	3.2
January	2006	0.5	2.7	0.1	2.8
April		0.6	2.7	1.1	2.6
July		0.6	2.7	0.7	2.9
October		0.6	2.4	0.4	2.3
January	2007	0.7	2.7	0.3	2.6

TABLE 49: Index of Retail Prices (Comparative Weights)

<u>SECTION</u>	<u>WEIGHT</u> <u>(w.e.f. July 1973)</u>	<u>WEIGHT</u> <u>(w.e.f. October 1980)</u>	<u>WEIGHT</u> <u>(w.e.f. April 1998)</u>
Foodstuffs	386.33	330.67	257.49
Alcoholic Drink and Tobacco	66.82	59.56	27.35
Clothing and Footwear	155.08	110.00	97.00
Durable Housing Goods	74.45	100.42	38.79
Housing	93.35	125.90	199.02
Services	55.28	75.39	85.61
Other Goods	76.69	64.77	86.27
Transport and Vehicles	92.00	133.29	208.47
	1000.00	1000.00	1000.00

TABLE 50: Internal Purchasing Power of the Pound, 1993 - 2006

<u>YEAR</u>	<u>1993</u>	<u>1994</u>	<u>1995</u>	<u>1996</u>	<u>1997</u>	<u>1998</u>	<u>1999</u>	<u>2000</u>	<u>2001</u>	<u>2002</u>	<u>2003</u>	<u>2004</u>	<u>2005</u>	<u>2006</u>
<u>1993</u>	£1.00	£1.01	£1.03	£1.05	£1.07	£1.08	£1.09	£1.10	£1.11	£1.12	£1.15	£1.18	£1.22	£1.25
<u>1994</u>	£0.99	£1.00	£1.02	£1.04	£1.06	£1.07	£1.08	£1.08	£1.10	£1.11	£1.14	£1.17	£1.21	£1.24
<u>1995</u>	£0.97	£0.98	£1.00	£1.02	£1.04	£1.05	£1.06	£1.06	£1.08	£1.09	£1.12	£1.15	£1.19	£1.21
<u>1996</u>	£0.95	£0.96	£0.98	£1.00	£1.02	£1.03	£1.04	£1.05	£1.06	£1.07	£1.10	£1.13	£1.16	£1.19
<u>1997</u>	£0.94	£0.95	£0.96	£0.98	£1.00	£1.01	£1.02	£1.03	£1.04	£1.05	£1.08	£1.11	£1.14	£1.18
<u>1998</u>	£0.93	£0.94	£0.96	£0.97	£0.99	£1.00	£1.01	£1.02	£1.04	£1.04	£1.07	£1.10	£1.13	£1.16
<u>1999</u>	£0.92	£0.93	£0.95	£0.96	£0.98	£0.99	£1.00	£1.01	£1.03	£1.04	£1.06	£1.09	£1.12	£1.15
<u>2000</u>	£0.91	£0.92	£0.94	£0.96	£0.97	£0.98	£0.99	£1.00	£1.02	£1.03	£1.05	£1.08	£1.11	£1.14
<u>2001</u>	£0.90	£0.91	£0.92	£0.94	£0.96	£0.97	£0.97	£0.98	£1.00	£1.01	£1.03	£1.06	£1.09	£1.12
<u>2002</u>	£0.89	£0.90	£0.92	£0.93	£0.95	£0.96	£0.97	£0.97	£0.99	£1.00	£1.03	£1.05	£1.08	£1.12
<u>2003</u>	£0.87	£0.88	£0.89	£0.91	£0.93	£0.93	£0.94	£0.95	£0.97	£0.98	£1.00	£1.02	£1.06	£1.09
<u>2004</u>	£0.85	£0.85	£0.87	£0.89	£0.90	£0.91	£0.92	£0.93	£0.94	£0.95	£0.98	£1.00	£1.03	£1.06
<u>2005</u>	£0.82	£0.83	£0.84	£0.86	£0.88	£0.88	£0.89	£0.90	£0.91	£0.92	£0.95	£0.97	£1.00	£1.02
<u>2006</u>	£0.80	£0.81	£0.82	£0.84	£0.85	£0.86	£0.87	£0.88	£0.90	£0.90	£0.92	£0.94	£0.98	£1.00

TRADE

TABLE 51: Summary of Imports and Exports (excluding petroleum products), 1974 - 2006

<u>YEAR</u>	<u>£ million</u>	
	<u>IMPORTS (C.I.F.)</u>	<u>EXPORTS (F.O.B.)</u>
1974	15.2	1.2
1975	18.4	1.4
1976	21.1	1.8
1977	28.0	2.5
1978	31.3	3.3
1979	39.1	4.7
1980	47.1	4.2
1981	44.1	5.7
1982	46.9	5.6
1983	43.3	6.6
1984	44.4	6.3
1985	70.6	10.8
1986	82.0	16.7
1987	111.7	19.6
1988	116.1	22.5
1989	165.5	42.1
1990	202.7	46.4
1991	219.1	12.9
1992	262.2	35.4
1993	267.6	62.3
1994	283.7	84.0
1995	258.7	73.6
1996	276.6	70.4
1997	216.8	49.2
1998	255.8	75.1
1999	299.8	74.3
2000	317.9	83.9
2001	302.5	83.7
2002	256.2	98.5
2003	286.1	90.1
2004	292.0	108.4
2005	303.0	110.0
2006	366.4	130.9

Notes: (i) As from 1994, the figures have been adjusted to exclude the value of imported banknotes, stamps and other items in that subgroup. This adjustment has not been possible in respect of years prior to 1994.

(ii) C.I.F. - Carriage, Insurance, Freight i.e. these costs are included in the import figures.

(iii) F.O.B. - Free On Board i.e. insurance and transport costs are excluded from the export figures.

TABLE 52: Imports from E.U. Countries (excluding Petroleum Products), 2000 - 2006

£ 000's (C.I.F.)

<u>COUNTRY</u>	<u>2000</u>	<u>2001</u>	<u>2002</u>	<u>2003</u>	<u>2004</u>	<u>2005</u>	<u>2006</u>
United Kingdom	130,143	113,987	94,697	79,355	84,424	79,010	117,117
Spain	52,874	58,051	49,573	57,184	45,206	65,223	90,604
Denmark	1,253	1,257	638	1,038	1,524	2,464	4,386
Netherlands	7,175	9,095	11,192	15,339	6,340	11,548	4,335
France	1,765	1,347	1,189	1,941	1,660	4,957	2,570
Germany	2,796	4,710	2,499	2,843	1,280	2,648	2,510
Italy	805	1,218	1,524	1,289	605	462	772
Ireland	811	669	397	392	483	846	684
Cyprus	n/a	n/a	n/a	n/a	653	589	509
Greece	138	122	111	255	418	305	266
Belgium	1,123	1,143	1,042	308	257	213	215
Malta	n/a	n/a	n/a	n/a	1	1	163
Austria	301	88	133	55	35	164	138
Portugal	70	146	119	128	120	97	122
Poland	n/a	n/a	n/a	n/a	7	20	122
Hungary	n/a	n/a	n/a	n/a	60	175	117
Sweden	318	336	942	120	195	57	55
Slovenia	n/a	n/a	n/a	n/a	3	1	41
Finland	30	4	18	150	101	45	34
Luxembourg	0	0	0	2	0	4	13
Latvia	n/a	n/a	n/a	n/a	0	0	1
Czech Republic	n/a	n/a	n/a	n/a	1	19	0
Slovak Republic	n/a	n/a	n/a	n/a	0	1	0
Estonia	n/a	n/a	n/a	n/a	0	0	0
Lithuania	n/a	n/a	n/a	n/a	0	0	0
TOTAL	199,602	192,173	164,074	160,399	143,373	168,849	224,774

Note: (i) C.I.F. - Carriage, Insurance, Freight i.e. these costs are included in the import figures.

**IMPORTS FROM EU COUNTRIES
(excluding Petroleum Products), 2000 - 2006**

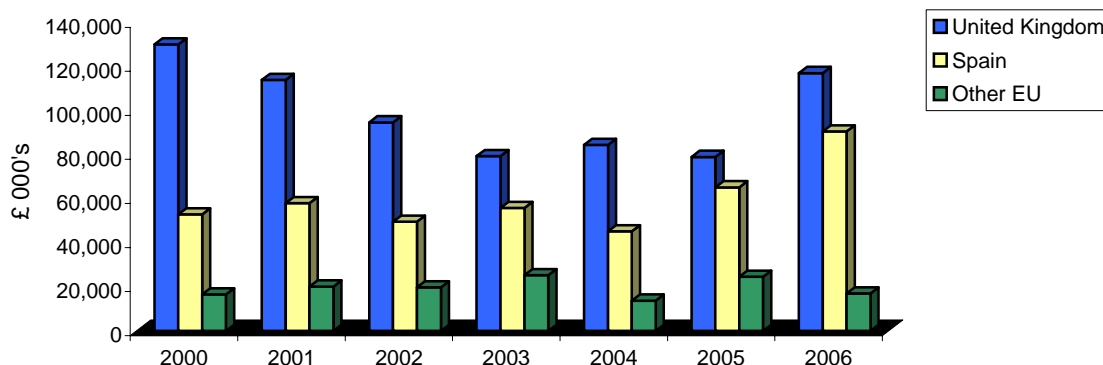


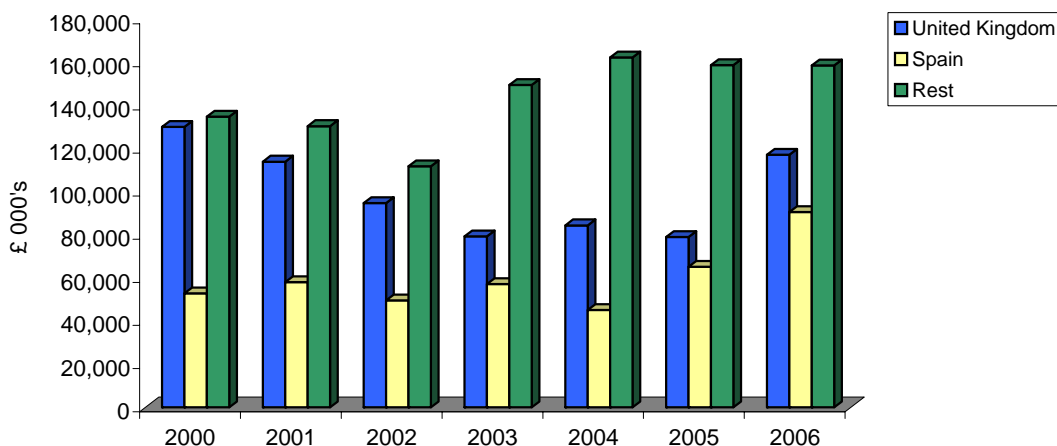
TABLE 53: Imports by Main Countries of Origin (excluding Petroleum Products), 2000 - 2006

£ 000's (C.I.F.)

<u>COUNTRY</u>	<u>2000</u>	<u>2001</u>	<u>2002</u>	<u>2003</u>	<u>2004</u>	<u>2005</u>	<u>2006</u>
United Kingdom	130,143	113,987	94,697	79,355	84,424	79,010	117,117
Spain	52,874	58,051	49,573	57,184	45,206	65,223	90,604
Denmark	1,253	1,257	638	1,038	1,524	2,464	4,386
Netherlands	7,175	9,095	11,192	15,339	6,340	11,548	4,335
United States	10,768	4,825	6,996	3,301	2,295	3,243	3,250
Japan	18,132	16,493	23,790	20,730	3,022	4,565	3,227
France	1,765	1,347	1,189	1,941	1,660	4,957	2,570
Germany	2,796	4,710	2,499	2,843	1,280	2,648	2,510
Switzerland	948	2,048	2,847	2,044	1,492	1,289	1,336
Italy	805	1,218	1,524	1,289	605	462	772
Ireland	811	669	397	392	483	846	684
Israel	10	30	105	58	53	336	665
Hong Kong	580	481	392	439	598	525	511
Cyprus	34	55	63	580	653	589	509
Korea	10	21	9	34	43	47	495
Norway	285	285	495	416	258	242	389
Singapore	214	138	188	115	181	233	339
Greece	138	122	111	257	418	305	266
Brazil	70	77	98	198	193	118	256
Other Countries	89,095	87,591	59,357	98,544	141,253	124,386	132,143
TOTAL	317,906	302,500	256,160	286,097	291,981	303,036	366,364

Note: C.I.F. - Carriage, Insurance, Freight i.e. these costs are included in the import figures.

**IMPORTS BY MAIN COUNTRIES OF ORIGIN
(excluding Petroleum Products), 2000 - 2006**



TOURISM

TABLE 54: Visitor Arrivals in Gibraltar, 1974 - 2006

<u>YEAR</u>	<u>AIR</u>	<u>SEA</u>	<u>LAND</u>	<u>TOTAL</u>
1974	53,399	86,525	-	139,924
1975	53,958	75,685	-	129,643
1976	44,490	80,729	-	125,219
1977	43,585	77,584	-	121,169
1978	47,066	72,300	-	119,366
1979	54,079	94,369	-	148,448
1980	51,035	102,721	-	153,756
1981	47,528	84,845	-	132,373
1982 (i)	46,180	81,063	46,595	173,838
1983	45,565	93,456	643,609	782,630
1984	47,813	80,654	477,571	606,038
1985 (ii)	73,664	77,952	2,260,039	2,411,655
1986	89,842	83,808	2,634,250	2,807,900
1987	123,287	97,955	2,963,248	3,184,490
1988	156,075	85,539	3,529,005	3,770,619
1989	162,438	78,014	3,743,725	3,984,177
1990	132,468	84,815	4,155,975	4,373,258
1991	96,829	63,655	3,909,741	4,070,225
1992	87,826	92,312	4,096,033	4,276,171
1993	80,449	81,560	4,117,986	4,279,995
1994	70,180	87,857	4,011,370	4,169,407
1995	72,017	102,924	5,329,717	5,504,658
1996	66,219	113,988	6,270,235	6,450,442
1997	73,698	87,043	5,834,434	5,995,175
1998	76,477	111,172	6,516,934	6,704,583
1999	81,922	145,221	5,917,946	6,145,089
2000	85,255	159,097	7,031,221	7,275,573
2001	92,553	145,987	7,048,108	7,286,648
2002	96,439	136,910	7,375,112	7,608,461
2003	114,484	164,052	7,502,815	7,781,351
2004	134,497	182,677	7,311,555	7,628,729
2005	150,303	206,030	7,434,420	7,790,753
2006	143,914	225,567	7,815,661	8,185,142

Notes: (i) Land frontier with Spain opened on 15th December 1982 for pedestrians only and on a restricted basis.

(ii) Normalisation at the land frontier took effect on 5th February 1985.

(iii) Persons entering Gibraltar via the land frontier includes non-Gibraltarian frontier workers.

VISITOR ARRIVALS, 1985 - 2006

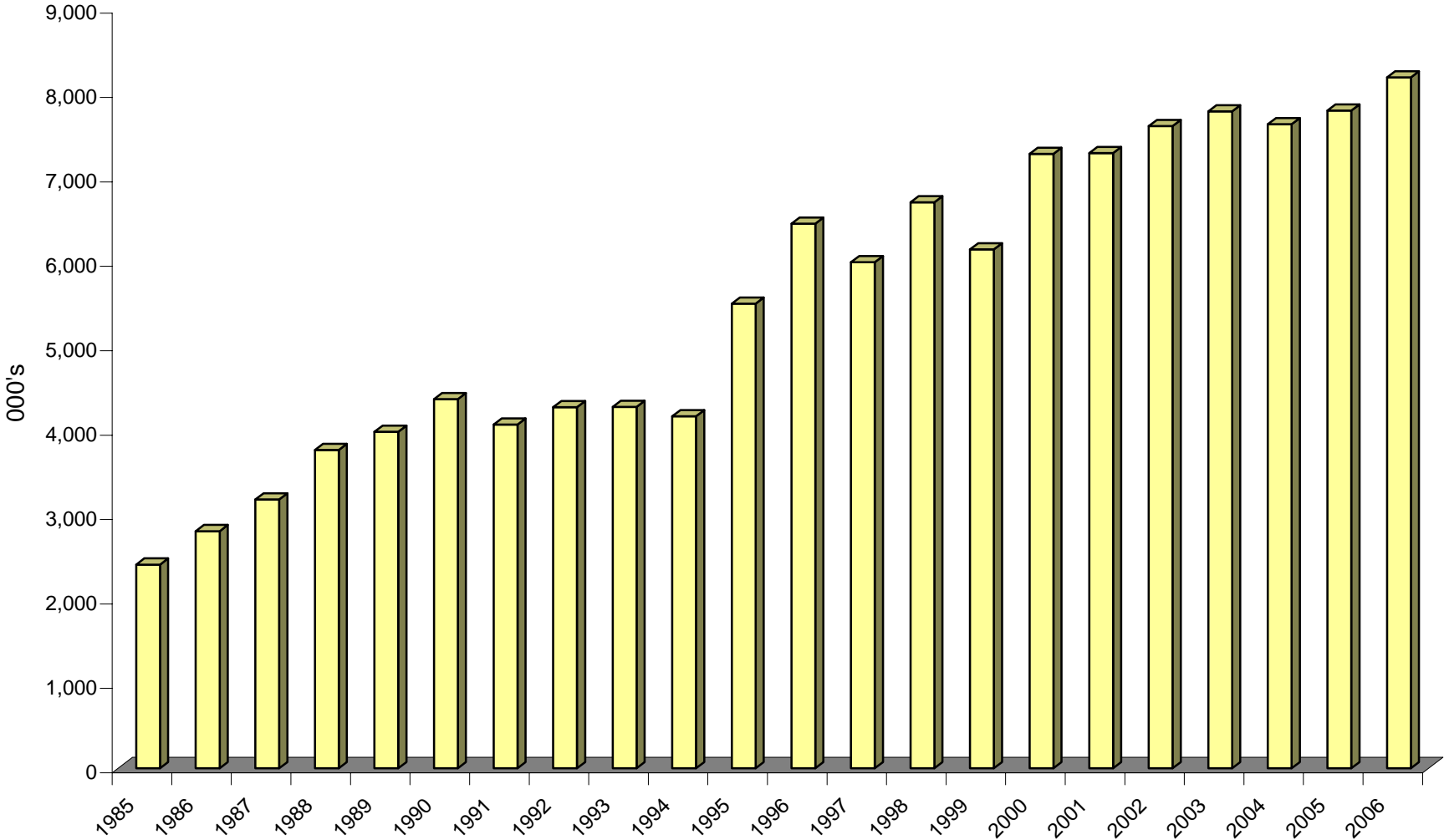


TABLE 55: All Visitor Arrivals, 2005 - 2006

<u>MONTH</u>	<u>SEA</u>			<u>AIR</u>			<u>LAND</u>			<u>TOTAL</u>		
	<u>2005</u>	<u>2006</u>	<u>%</u>	<u>2005</u>	<u>2006</u>	<u>%</u>	<u>2005</u>	<u>2006</u>	<u>%</u>	<u>2005</u>	<u>2006</u>	<u>%</u>
JANUARY	4,334	2,012	-53.6	8,101	8,117	+0.2	527,185	542,253	+2.9	539,620	552,382	+2.4
FEBRUARY	616	346	-43.8	9,379	9,210	-1.8	495,739	538,326	+8.6	505,734	547,882	+8.3
MARCH	4,038	3,513	-13.0	11,270	12,254	+8.7	614,653	620,859	+1.0	629,961	636,626	+1.1
APRIL	12,614	12,787	+1.4	12,268	13,376	+9.0	598,330	622,063	+4.0	623,212	648,226	+4.0
MAY	32,819	35,998	+9.7	14,277	15,264	+6.9	643,162	679,927	+5.7	690,258	731,189	+5.9
JUNE	20,923	22,540	+7.7	14,428	14,997	+3.9	641,077	644,676	+0.6	676,428	682,213	+0.9
JULY	23,335	24,863	+6.5	15,979	15,622	-2.2	640,542	694,271	+8.4	679,856	734,756	+8.1
AUGUST	40,831	34,205	-16.2	15,934	13,268	-16.7	748,140	793,050	+6.0	804,905	840,523	+4.4
SEPTEMBER	30,076	34,780	+15.6	15,707	12,751	-18.8	660,445	716,862	+8.5	706,228	764,393	+8.2
OCTOBER	22,777	30,180	+32.5	14,429	12,163	-15.7	685,267	715,639	+4.4	722,473	757,982	+4.9
NOVEMBER	7,573	9,966	+31.6	9,628	7,924	-17.7	589,718	617,669	+4.7	606,919	635,559	+4.7
DECEMBER	6,094	14,377	+135.9	8,903	8,968	+0.7	590,162	630,066	+6.8	605,159	653,411	+8.0
TOTAL	206,030	225,567	+9.5	150,303	143,914	-4.3	7,434,420	7,815,661	+5.1	7,790,753	8,185,142	+5.1

TABLE 56: Visitor Arrivals by Sea, 2005 - 2006

<u>MONTH</u>	<u>CRUISE SHIPS</u>			<u>YACHTS</u>			<u>OTHER</u>			<u>TOTAL</u>		
	<u>2005</u>	<u>2006</u>	<u>%</u>	<u>2005</u>	<u>2006</u>	<u>%</u>	<u>2005</u>	<u>2006</u>	<u>%</u>	<u>2005</u>	<u>2006</u>	<u>%</u>
JANUARY	3,750	1,571	-58.1	333	244	-26.7	251	197	-21.5	4,334	2,012	-53.6
FEBRUARY	0	0	-	483	291	-39.8	133	55	-58.6	616	346	-43.8
MARCH	3,142	2,802	-10.8	756	571	-24.5	140	140	-	4,038	3,513	-13.0
APRIL	11,400	11,558	+1.4	1,080	1,074	-0.6	134	155	+15.7	12,614	12,787	+1.4
MAY	30,819	34,706	+12.6	1,773	1,144	-35.5	227	148	-34.8	32,819	35,998	+9.7
JUNE	18,850	20,975	+11.3	1,923	1,423	-26.0	150	142	-5.3	20,923	22,540	+7.7
JULY	21,173	23,030	+8.8	1,997	1,619	-18.9	165	214	+29.7	23,335	24,863	+6.5
AUGUST	38,317	32,258	-15.8	2,321	1,780	-23.3	193	167	-13.5	40,831	34,205	-16.2
SEPTEMBER	28,063	33,022	+17.7	1,835	1,579	-14.0	178	179	+0.6	30,076	34,780	+15.6
OCTOBER	20,569	28,568	+38.9	2,076	1,435	-30.9	132	177	+34.1	22,777	30,180	+32.5
NOVEMBER	6,166	8,585	+39.2	1,268	1,249	-1.5	139	132	-5.0	7,573	9,966	+31.6
DECEMBER	5,575	13,724	+146.2	424	538	+26.9	95	115	+21.1	6,094	14,377	+135.9
TOTAL	187,824	210,799	+12.2	16,269	12,947	-20.4	1,937	1,821	-6.0	206,030	225,567	+9.5

TABLE 57: Visitor Arrivals by Air, 2005 - 2006

<u>MONTH</u>	<u>STAYING IN GIBRALTAR</u>			<u>IN TRANSIT</u>			<u>TOTAL</u>		
	<u>2005</u>	<u>2006</u>	<u>%</u>	<u>2005</u>	<u>2006</u>	<u>%</u>	<u>2005</u>	<u>2006</u>	<u>%</u>
JANUARY	3,754	3,633	-3.2	4,347	4,484	+3.2	8,101	8,117	+0.2
FEBRUARY	4,563	4,342	-4.8	4,816	4,868	+1.1	9,379	9,210	-1.8
MARCH	5,035	5,700	+13.2	6,235	6,554	+5.1	11,270	12,254	+8.7
APRIL	5,195	5,609	+8.0	7,073	7,767	+9.8	12,268	13,376	+9.0
MAY	6,138	6,488	+5.7	8,139	8,776	+7.8	14,277	15,264	+6.9
JUNE	5,939	5,945	+0.1	8,489	9,052	+6.6	14,428	14,997	+3.9
JULY	6,061	6,081	+0.3	9,918	9,541	-3.8	15,979	15,622	-2.2
AUGUST	6,313	5,030	-20.3	9,621	8,238	-14.4	15,934	13,268	-16.7
SEPTEMBER	6,436	5,384	-16.3	9,271	7,367	-20.5	15,707	12,751	-18.8
OCTOBER	6,041	5,092	-15.7	8,388	7,071	-15.7	14,429	12,163	-15.7
NOVEMBER	4,410	3,535	-19.8	5,218	4,389	-15.9	9,628	7,924	-17.7
DECEMBER	3,956	3,419	-13.6	4,947	5,549	+12.2	8,903	8,968	+0.7
TOTAL	63,841	60,258	-5.6	86,462	83,656	-3.2	150,303	143,914	-4.3

TABLE 58: Visitor Arrivals by Land, 2005 - 2006

<u>MONTH</u>	<u>PERSONS</u>			<u>NUMBER OF MOTOR VEHICLES</u>			<u>NUMBER OF COACHES</u>		
	<u>2005</u>	<u>2006</u>	<u>%</u>	<u>2005</u>	<u>2006</u>	<u>%</u>	<u>2005</u>	<u>2006</u>	<u>%</u>
JANUARY	527,185	542,253	+2.9	140,562	141,970	+1.0	418	369	-11.7
FEBRUARY	495,739	538,326	+8.6	133,417	137,284	+2.9	586	539	-8.0
MARCH	614,653	620,859	+1.0	141,003	154,206	+9.4	793	849	+7.1
APRIL	598,330	622,063	+4.0	148,772	146,314	-1.7	1,023	908	-11.2
MAY	643,162	679,927	+5.7	150,702	161,036	+6.9	1,051	1,070	+1.8
JUNE	641,077	644,676	+0.6	151,703	155,387	+2.4	995	958	-3.7
JULY	640,542	694,271	+8.4	149,644	165,187	+10.4	775	862	+11.2
AUGUST	748,140	793,050	+6.0	155,283	168,355	+8.4	747	722	-3.3
SEPTEMBER	660,445	716,862	+8.5	155,570	161,063	+3.5	1,051	1,021	-2.9
OCTOBER	685,267	715,639	+4.4	158,364	162,704	+2.7	1,188	1,107	-6.8
NOVEMBER	589,718	617,669	+4.7	146,502	148,161	+1.1	683	638	-6.6
DECEMBER	590,162	630,066	+6.8	149,186	156,775	+5.1	495	479	-3.2
TOTAL	7,434,420	7,815,661	+5.1	1,780,708	1,858,442	+4.4	9,805	9,522	-2.9

TABLE 59: General Analysis, All Hotels, 1980 - 2006

<u>YEAR</u>	<u>ALL ARRIVALS</u>	<u>(00's)</u>		<u>% ROOM OCCUPANCY</u>	<u>(000's)</u>		<u>% SLEEPER OCCUPANCY</u>	<u>AVERAGE LGTH. OF STAY</u>
		<u>RNO</u>	<u>RNS</u>		<u>GNO</u>	<u>GNS</u>		
1980	41,308	n/a	n/a	n/a	551	256	46.5	6.2
1981	33,417	n/a	n/a	n/a	519	188	36.2	5.6
1982	34,896	n/a	n/a	n/a	529	223	42.2	6.4
1983	33,142	n/a	n/a	n/a	546	210	38.4	6.3
1984	35,690	n/a	n/a	n/a	546	226	41.3	6.3
1985	55,119	n/a	n/a	n/a	552	282	51.0	5.1
1986	56,525	n/a	n/a	n/a	519	266	51.3	4.6
1987	64,349	n/a	n/a	n/a	535	278	52.3	4.3
1988	64,942	n/a	n/a	61.3	551	286	52.0	4.4
1989	67,934	n/a	n/a	53.3	501	220	44.0	3.2
1990	64,793	n/a	n/a	51.3	481	197	40.8	3.0
1991	43,193	n/a	n/a	50.6	502	178	35.5	4.1
1992	40,986	2,367	976	41.2	497	157	31.6	3.8
1993	39,123	1,946	941	48.4	391	157	40.2	4.0
1994	37,851	1,986	885	44.5	401	149	37.2	3.9
1995	45,056	1,919	884	46.1	369	144	39.2	3.2
1996	46,142	1,908	826	43.3	372	141	37.8	3.1
1997	48,420	1,904	900	47.3	370	144	39.0	3.0
1998	41,616	1,733	930	53.6	335	145	43.1	3.5
1999	42,031	1,792	991	55.3	351	154	43.7	3.7
2000	48,949	1,790	1,054	58.9	368	164	44.6	3.4
2001	53,776	1,789	1,149	64.2	366	179	48.9	3.3
2002	59,417	1,825	1,176	64.4	367	182	49.7	3.1
2003	61,743	1,855	1,192	64.2	367	188	51.2	3.0
2004	61,710	1,855	1,264	68.2	366	202	55.1	3.3
2005	58,796	1,772	1,216	68.6	349	196	56.2	3.3
2006	59,194	2,004	1,186	59.2	406	192	47.3	3.2

Notes :

1. RNO - Room Nights Offered.
2. RNS - Room Nights Sold.
3. GNO - Guest Nights Offered.
4. GNS - Guest Nights Sold.
5. With effect from January 1992, hotels were required under the legislation to submit returns which included the % room occupancy figures. For the period 1988 to 1991, these figures were provided voluntarily by the hotels.

**TABLE 60: Arrivals, Guest Nights Sold, Sleeper Occupancy
and Average Length of Stay, 2005 - 2006**

2005

<u>MONTH</u>	<u>ARRIVALS</u>	<u>GUEST NIGHTS SOLD</u>	<u>% OCCUPANCY</u>	<u>AVGE. LENGTH OF STAY</u>
JANUARY	3,962	11,891	38.7	3.0
FEBRUARY	4,566	15,485	58.0	3.4
MARCH	4,962	15,458	52.8	3.1
APRIL	5,093	16,867	59.3	3.3
MAY	5,700	18,180	60.4	3.2
JUNE	5,057	18,029	64.5	3.6
JULY	4,966	16,434	57.1	3.3
AUGUST	5,454	18,026	62.0	3.3
SEPTEMBER	5,708	19,680	70.1	3.5
OCTOBER	5,316	19,931	68.5	3.8
NOVEMBER	4,357	15,170	52.6	3.5
DECEMBER	3,655	10,676	33.7	2.9
TOTAL	58,796	195,827	56.2	3.3

2006

<u>MONTH</u>	<u>ARRIVALS</u>	<u>GUEST NIGHTS SOLD</u>	<u>% OCCUPANCY</u>	<u>AVGE. LENGTH OF STAY</u>
JANUARY	4,252	11,722	34.2	2.8
FEBRUARY	4,450	12,902	41.2	2.9
MARCH	5,536	16,910	49.5	3.0
APRIL	5,286	16,414	49.3	3.1
MAY	5,710	17,304	50.7	3.0
JUNE	5,473	18,358	55.4	3.4
JULY	4,958	18,798	54.0	3.8
AUGUST	4,549	17,169	49.3	3.8
SEPTEMBER	5,401	19,496	57.9	3.6
OCTOBER	5,359	18,215	52.7	3.4
NOVEMBER	4,372	13,716	40.7	3.1
DECEMBER	3,848	11,635	33.7	3.0
TOTAL	59,194	192,639	47.3	3.2

TABLE 61: Arrivals, Room Nights Sold and % Room Occupancy, 2005 - 2006

2005

<u>MONTH</u>	<u>ARRIVALS</u>	<u>ROOM NIGHTS SOLD</u>	<u>% OCCUPANCY</u>
JANUARY	3,962	8,446	54.3
FEBRUARY	4,566	10,671	79.2
MARCH	4,962	9,851	66.2
APRIL	5,093	10,679	73.2
MAY	5,700	11,302	73.6
JUNE	5,057	10,745	75.3
JULY	4,966	10,112	68.3
AUGUST	5,454	10,266	70.0
SEPTEMBER	5,708	11,375	80.0
OCTOBER	5,316	12,083	82.2
NOVEMBER	4,357	9,044	62.0
DECEMBER	3,655	7,015	43.7
TOTAL	58,796	121,589	68.6

2006

<u>MONTH</u>	<u>ARRIVALS</u>	<u>ROOM NIGHTS SOLD</u>	<u>% OCCUPANCY</u>
JANUARY	4,252	7,628	45.1
FEBRUARY	4,450	8,161	53.0
MARCH	5,536	11,028	65.1
APRIL	5,286	9,970	60.3
MAY	5,710	10,551	62.6
JUNE	5,473	11,283	68.6
JULY	4,958	10,916	64.0
AUGUST	4,549	9,678	56.7
SEPTEMBER	5,401	11,740	70.8
OCTOBER	5,359	11,417	66.7
NOVEMBER	4,372	8,932	54.0
DECEMBER	3,848	7,292	42.9
TOTAL	59,194	118,596	59.2

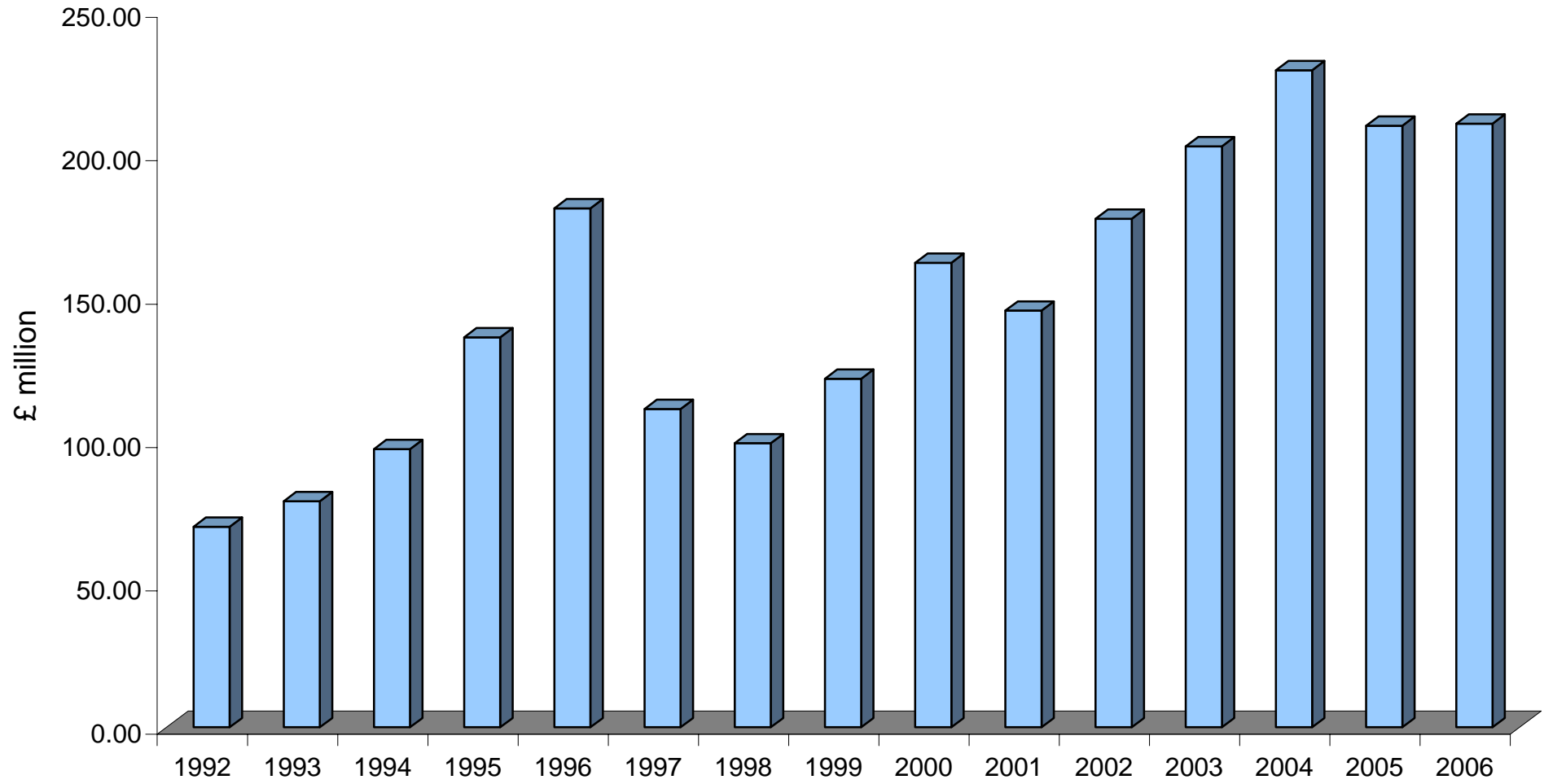
Note: The monthly Occupancy rates have been rounded off and need not necessarily equal the sum of the rounded-off total figure.

TABLE 62: Tourist Expenditure in Gibraltar (£ million), 1992 - 2006

	<u>1992</u>	<u>1993</u>	<u>1994</u>	<u>1995</u>	<u>1996</u>	<u>1997</u>	<u>1998</u>	<u>1999</u>	<u>2000</u>	<u>2001</u>	<u>2002</u>	<u>2003</u>	<u>2004</u>	<u>2005</u>	<u>2006</u>
Visitor Arrivals at Hotels	13.40	9.28	12.58	12.81	8.43	17.36	10.65	12.49	12.46	13.16	16.28	17.58	18.59	18.52	20.30
Excursionists from Morocco	0.05	0.03	-	-	-	0.01	0.02	0.02	0.02	0.02	0.02	0.02	-	-	-
Excursionists from Cruises	1.42	1.35	1.46	3.00	3.08	1.84	3.81	5.77	5.40	4.22	5.14	6.60	7.19	7.44	8.07
Yacht Visitors	2.23	1.93	2.12	2.42	0.81	1.39	0.21	0.29	0.38	0.35	0.22	0.35	0.27	0.35	0.47
Visitors in Supplementary Accommodation	2.70	2.93	5.11	5.78	7.46	6.71	5.10	5.15	4.91	5.99	9.35	9.57	12.93	14.31	13.75
Visitors in Transit	1.48	1.13	0.52	0.50	0.73	0.86	0.37	0.34	0.44	1.56	1.85	1.05	1.53	0.57	0.76
Excursionists from Spain	48.67	62.17	75.20	111.50	160.42	82.69	78.89	97.51	138.40	120.00	144.53	167.42	188.65	168.58	167.15
TOTAL	69.95	78.82	97.00	136.00	181.00	111.00	99.05	121.57	162.01	145.31	177.38	202.58	229.15	209.77	210.50

Note: The yearly totals have been rounded off and need not necessarily equal the sum of the rounded-off expenditure categories.

TOURIST EXPENDITURE, 1992 - 2006



GOVERNMENT REVENUE AND EXPENDITURE

TABLE 63(a): Consolidated Fund Recurrent Revenue and Expenditure, 1983 - 2008 (i)

£ thousands

<u>YEAR</u>	<u>REVENUE</u>	<u>EXPENDITURE</u>
1983/84 (ii)	51,087	55,301
1984/85	53,846	55,380
1985/86	64,500	61,054
1986/87	74,216	71,051
1987/88	76,553	78,216
1988/89	82,124	81,904
1989/90	87,716	90,158
1990/91	90,834	96,147
1991/92	87,185	83,129
1992/93	72,847	76,160
1993/94	69,850	72,047
1994/95	69,413	69,566
1995/96	71,971	71,483
1996/97	76,435	78,121
1997/98 (v)	119,797	104,731
1998/99	131,076	113,527
1999/00	140,617	122,213
2000/01	147,851	137,397
2001/02	161,000	144,135
2002/03	166,263	157,488
2003/04	163,686	165,162
2004/05	181,585	177,783
2005/06	198,310	177,568
2006/07 (iii)	212,144	187,037
2007/08 (iv)	223,362	207,586

Notes: (i) These figures do not include certain revenues and expenditures provided for specific purposes and which are accounted for separately. Examples of these are the Social Insurance Funds which are used to fund state pensions and benefits and also the Group Practice Medical Scheme (G.P.M.S.)

(ii) Figures relate to Actual Recurrent Revenue and Expenditure from 1983/84 to 2005/06.

(iii) Forecast Outturn, 2006/07.

(iv) Estimate, 2007/08

(v) The Consolidated Fund from 1997/98 incorporates public sector revenue and expenditure which were, during the previous few years, accounted for in a number of Special Funds that have been wound up by statutory bodies and former Government-owned companies.

TABLE 63(b): Overall Government Revenue and Expenditure, 1998 - 2007

£million

<u>YEAR</u>	<u>REVENUE</u>	<u>EXPENDITURE</u>
1998/99	150.0	133.1
1999/00	157.6	141.7
2000/01	167.2	155.5
2001/02	181.8	170.2
2002/03	186.2	179.0
2003/04	193.8	201.6
2004/05	217.6	210.8
2005/06	246.0	223.9
2006/07	260.7	235.9

OVERALL REVENUE & EXPENDITURE

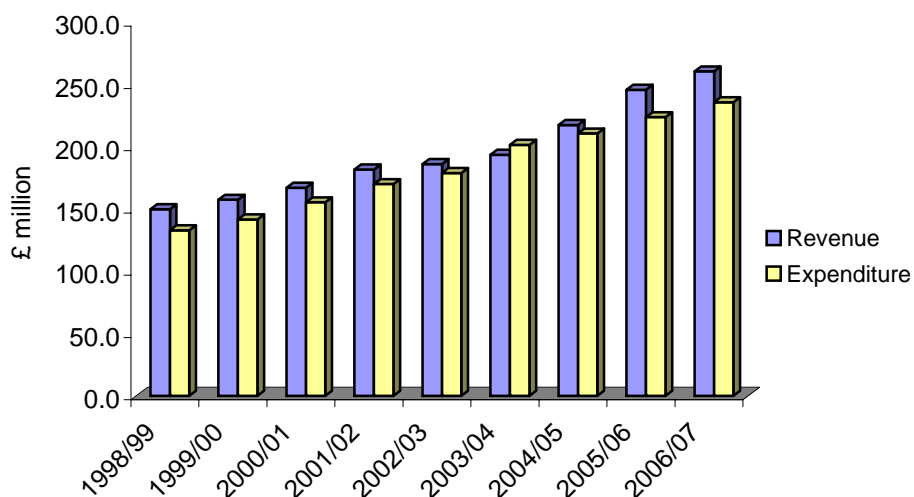


TABLE 64(a): Consolidated Fund Recurrent Expenditure and Revenue Estimates, 2006 - 2007

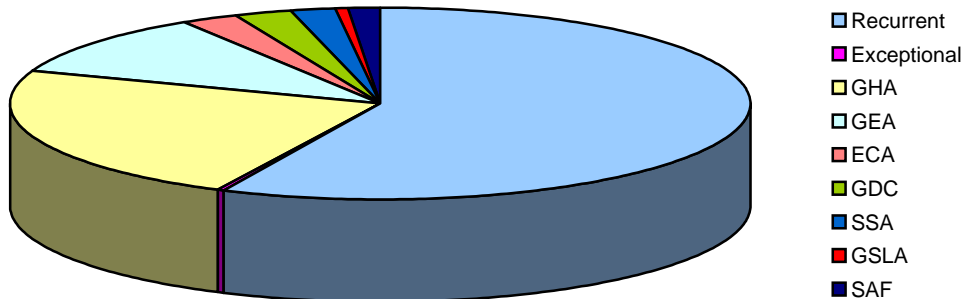
<u>£'million</u>			
<u>REVENUE</u>	<u>FORECAST OUTTURN 2006/07 £</u>	<u>EXPENDITURE</u>	<u>FORECAST OUTTURN 2006/07 £</u>
Income Taxes	121.000	Education & Training	22.045
		Heritage, Culture, Youth & Sport	4.932
Duties, Taxes and Other Receipts	42.943	Housing	8.642
		Environment, Roads & Utilities	24.669
Gambling Fees	7.619	Social & Civic Affairs	20.204
		Trade, Industry, Employment & Communications	13.162
Rates and Rents	15.903	Health & Civil Protection	38.514
		Administration	10.367
Departmental Fees and Receipts	16.431	Finance	12.193
		Law Officers	0.490
		Judiciary	0.936
Government Earnings	8.248	House of Assembly	0.967
		Office of the Principal Auditor	0.591
		Consolidated Fund Charges	29.325
TOTAL RECURRENT REVENUE	212.144	TOTAL RECURRENT EXPENDITURE	187.037

TABLE 64(b): Overall Government Revenue and Expenditure Analysis, 2006 - 2007

£'million

	<u>REVENUE</u>	<u>EXPENDITURE</u>
Consolidated Fund Recurrent	212.1	134.5
Consolidated Fund Exceptional	-	0.4
Gibraltar Health Authority	27.2	55.4
Gibraltar Electricity Authority	17.9	24.5
Elderly Care Agency	0.6	6.2
Gibraltar Development Corporation	2.9	6.0
Social Services Agency	-	4.1
Gibraltar Sports & Leisure Authority	-	1.3
Social Assistance Fund	-	3.5
TOTAL	£260.7	£235.9

OVERALL EXPENDITURE ANALYSIS



Source: Treasury Department

FINANCIAL SERVICES

TABLE 65: Commercial Banks Liabilities, 1989 - 2007

£ million

<u>YEAR</u> <u>(as at 31st March)</u>	<u>BALANCES</u>			<u>TOTAL</u> <u>LIABILITIES</u>
	<u>TOTAL</u> <u>DEPOSITS</u>	<u>FROM</u> <u>BANKS</u>	<u>OTHER</u> <u>LIABILITIES</u>	
1989	832.5	333.5	232.1	1,398.1
1990	1,350.5	476.6	505.5	2,332.6
1991	1,629.8	1,560.9	516.3	3,706.9
1992	1,970.1	2,165.0	818.8	4,953.9
1993	2,974.5	2,158.1	1,041.6	6,174.2
1994	3,398.4	1,785.2	1,270.0	6,453.5
1995	2,801.0	1,834.7	1,276.9	5,912.6
1996	2,861.6	2,138.2	1,485.6	6,485.4
1997	2,681.0	2,140.4	1,390.0	6,211.4
1998	2,957.8	1,749.4	1,695.6	6,402.8
1999	2,841.8	2,000.2	1,786.6	6,628.5
2000	2,138.4	1,615.0	850.6	4,604.1
2001	2,481.2	1,746.8	976.1	5,204.1
2002	2,465.9	2,349.6	740.6	5,556.0
2003	2,653.2	1,700.3	555.9	4,909.4
2004	2,656.5	1,700.3	408.7	4,765.5
2005	2,915.6	2,235.1	501.4	5,652.1
2006	3,622.0	2,783.6	532.6	6,938.2
2007 (ii)	4,257.6	3,578.6	94.5	8,361.7

Notes : (i) The Total Liabilities yearly figures have been rounded-off from the actual figures and need not necessarily equal the sum of the other itemised figures.

(ii) Figures for 2007 are as at 31st December 2006.

TOTAL DEPOSITS, 1989 - 2007

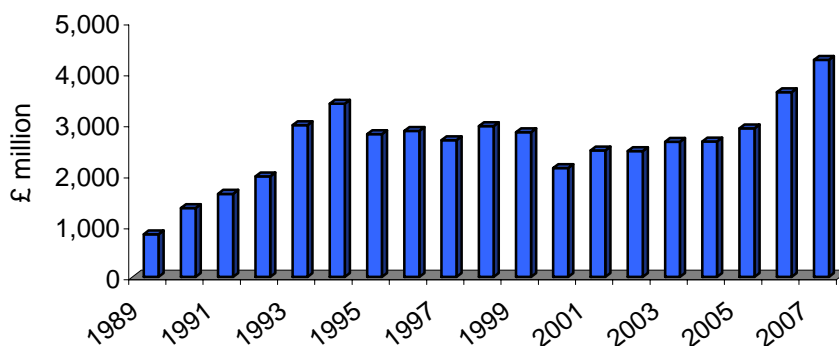


TABLE 66: Commercial Banks Assets, 1989 - 2007

£ million

YEAR (as at 31st March)	BALANCES		LOANS	INVESTMENTS	OTHER ASSETS	TOTAL ASSETS
	CASH	WITH BANKS	AND ADVANCES			
1989	3.5	855.3	337.6	152.3	49.4	1,398.1
1990	3.7	1,183.7	673.2	395.3	76.7	2,332.6
1991	4.6	1,347.8	1,471.0	773.4	110.2	3,706.9
1992	4.4	1,605.4	1,850.1	1,415.2	79.0	4,953.9
1993	4.7	1,800.5	1,738.1	2,511.1	119.7	6,174.2
1994	7.0	1,960.0	1,263.2	3,110.5	112.8	6,453.5
1995	3.9	2,250.1	980.8	2,526.8	151.0	5,912.6
1996	4.9	2,487.6	1,012.7	2,833.1	147.1	6,485.4
1997	5.5	2,363.7	1,088.4	2,615.8	137.9	6,211.4
1998	6.0	2,765.1	1,069.0	2,462.6	100.0	6,402.8
1999	5.7	2,851.7	1,091.0	2,582.1	98.0	6,628.5
2000	6.4	3,293.4	1,180.4	6.3	117.6	4,604.1
2001	6.6	3,854.9	1,198.8	17.0	126.8	5,204.1
2002	7.8	4,113.9	1,300.7	18.5	115.1	5,556.0
2003	8.5	3,046.8	1,629.6	202.0	22.5	4,909.4
2004	10.7	2,763.2	1,772.7	187.2	31.7	4,765.5
2005	38.0	3,390.7	1,974.2	198.3	50.8	5,652.1
2006	9.9	4,536.3	2,080.9	266.4	44.8	6,938.2
2007 (ii)	10.7	5480.5	2406.8	390.1	73.6	8361.7

Notes: (i) The Total Assets yearly figures have been rounded-off from the actual figures and need not necessarily equal the sum of the other itemised figures.

(ii) Figures for 2007 are as at 31st December 2006.

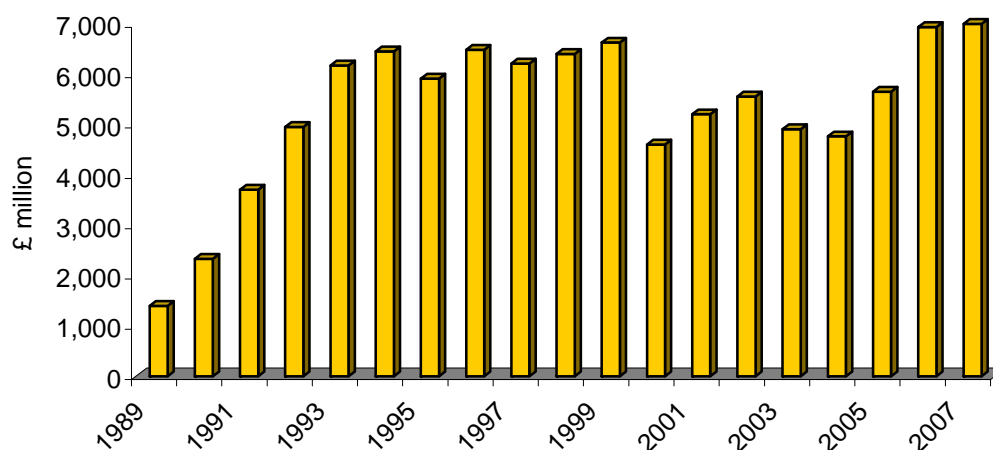
TOTAL ASSETS, 1989 - 2007

TABLE 67: Company Management and Trusteeships, as at 31st March, 2003 - 2007

	<u>2003</u>	<u>2004</u>	<u>2005</u>	<u>2006</u>	<u>2007</u>
Number of "Groups" conducting Company Management or Professional Trustee Services	78	82	82	82	86
Number of Licencees	354	418	434	448	504
Number of Trusts for which Trustee are provided	3,019	3,265	2,972	3,954	4,079
Number of Companies for which Company Managerial Services are provided	34,499	36,560	35,136	42,543	41,596
Number of Directorships provided	23,848	22,266	18,860	24,223	25,087
Number of Shareholders provided	23,581	23,392	18,659	25,702	25,986
Number of Registered Offices	*	32,922	31,403	30,356	30,730
Number of Secretarial Services provided	*	32,920	30,799	38,248	37,348

*Note: * Information not previously collected.*

TABLE 68: Licensees, as at 31 March, 1997 - 2007

	<u>1997</u>	<u>1998</u>	<u>1999</u>	<u>2000</u>	<u>2001</u>	<u>2002</u>	<u>2003</u>	<u>2004</u>	<u>2005</u>	<u>2006</u>	<u>2007</u>
Banks	25	28	26	22	19	19	18	17	18	18	18
Insurance Companies	12	16	16	13	17	22	31	39	46	50	56
Insurance Intermediaries	17	17	22	24	27	29	27	28	29	30	30
Insurance Managers	3	4	8	7	7	7	6	6	8	8	8
Investment Firms	11	11	17	21*	24*	26*	23*	22*	25	26	33
Company Managers/ Professional Trustees	74	75	81	84	83	78	78	80	82	82	87

Notes: (i) Insurance Managers in 1996 did not require licensing.

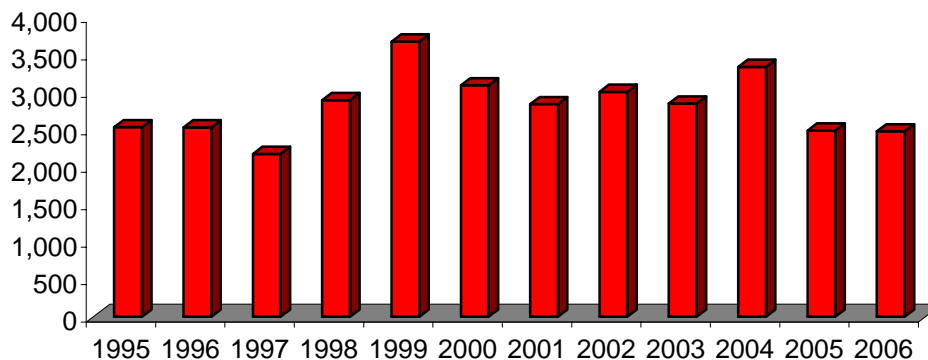
(ii) Investment firms have changed due to a reclassification by the Financial Services Commission.*

TRANSPORT

TABLE 69: New Registrations, Road Vehicles, 1983 - 2006

<u>YEAR</u>	<u>MOTOR VEHICLES</u>		<u>MOTORCYCLES</u>	<u>TOTAL</u>
	<u>PRIVATE</u>	<u>COMMERCIAL</u>		
1983	979	134	261	1,374
1984	900	104	230	1,234
1985	2,044	138	190	2,372
1986	2,312	140	202	2,654
1987	2,187	340	212	2,739
1988	2,339	433	210	2,982
1989	2,299	400	289	2,988
1990	2,105	296	562	2,963
1991	1,405	230	3,187	4,822
1992	2,406	319	1,345	4,070
1993	2,456	221	730	3,407
1994	1,871	285	720	2,876
1995	1,683	174	673	2,530
1996	1,743	321	464	2,528
1997	1,451	229	493	2,173
1998	1,899	212	780	2,891
1999	2,476	233	965	3,674
2000	1,673	302	1,115	3,090
2001	1,556	228	1,053	2,837
2002	1,952	157	893	3,002
2003	1,763	318	766	2,847
2004	1,430	1,193	712	3,335
2005	1,156	555	775	2,486
2006	1,260	290	925	2,475

NEW REGISTRATIONS, 1993 - 2006



**TABLE 70: Vehicles with Current Renewable Road Tax Licence
on 31 December, 1983 - 2006**

<u>YEAR</u>	<u>MOTOR VEHICLES</u>		<u>MOTORCYCLES</u>	<u>TOTAL</u>
	<u>PRIVATE</u>	<u>COMMERCIAL</u>		
1983	8,682	871	1,283	10,836
1984	8,479	835	1,358	10,672
1985	10,642	965	1,559	13,166
1986	12,954	1,100	1,761	15,815
1987	13,138	1,620	1,648	16,406
1988	15,455	1,978	1,903	19,336
1989	17,671	2,319	2,196	22,186
1990	19,808	2,450	2,774	25,032
1991	18,149	2,576	6,154	26,879
1992	23,972	1,853	7,546	33,371
1993	18,072	1,103	6,318	25,493
1994	18,471	1,108	6,343	25,922
1995	18,380	1,074	6,588	26,042
1996	19,023	1,551	6,557	27,131
1997	19,344	1,700	5,861	26,905
1998	19,993	1,796	5,908	27,697
1999	22,450	2,004	6,895	31,349
2000	25,838	2,317	8,511	36,666
2001	27,395	2,544	9,564	39,503
2002	12,855	1,367	5,735	19,957
2003	12,799	1,976	5,588	20,363
2004	13,856	2,620	6,179	22,655
2005	14,586	2,124	6,561	23,271
2006	14,746	2,255	7,129	24,130

Note: The figures prior to 2002 include inactive records.

CURRENT RENEWABLE ROAD TAX LICENCES, 1995 - 2006

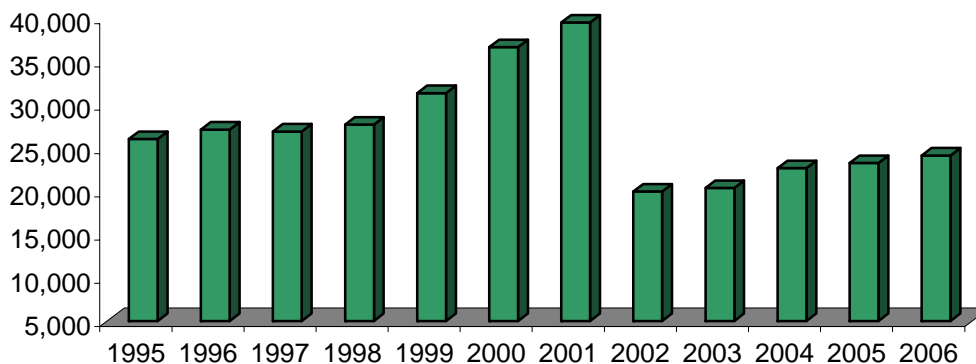


TABLE 71: Deep-Sea Merchant Ships Calling at Gibraltar, 1976 - 2006

<u>YEAR</u>	<u>NUMBER</u>	<u>REGISTERED TONNAGE</u>
1976	1,892	18,895,942
1977	1,856	19,948,402
1978	1,692	17,704,149
1979	1,766	22,653,366
1980	1,568	18,863,469
1981	1,533	17,347,034
1982	1,402	14,820,098
1983	1,254	20,963,577
1984	1,118	18,734,654
1985	1,375	25,401,094
1986	1,980	32,831,134
1987	2,499	35,490,934
1988	2,109	43,462,851
1989	1,932	35,790,002
1990	2,521	57,593,017
1991	2,843	60,875,947
1992	2,888	62,890,747
1993	2,798	64,142,042
1994	2,425	52,840,177
1995	2,566	57,305,982
1996	3,411	78,162,851
1997	3,378	83,269,956
1998	4,023	96,603,833
1999	4,435	109,937,710
2000	4,489	106,955,034
2001	4,510	118,416,175
2002	5,162	127,977,906
2003	5,758	146,101,022
2004	6,076	136,854,466
2005	6,662	160,521,661
2006	6,629	167,781,479

Notes: (i) Vessels serviced off limits are not included.

(ii) Figures from 1983 onwards are recorded as Gross Registered Tonnage. Figures for previous years were recorded as Net Registered Tonnage and cannot be converted for comparative purposes.

TABLE 72: Main Purpose of Call of Deep-Sea Merchant Ships Arriving at Gibraltar, 1976 - 2006

MAIN PURPOSE OF CALL	CRUISE	CARGO	BUNKERS	SUPPLY	REPAIRS	OTHER	TOTAL
1976	74	239	440	-	135	1,004	1,892
1977	65	274	395	-	139	983	1,856
1978	52	236	386	-	144	874	1,692
1979	81	234	413	-	134	904	1,766
1980	87	225	364	-	108	784	1,568
1981	65	195	414	-	104	755	1,533
1982	102	174	390	-	64	672	1,402
1983	109	184	251	-	52	658	1,254
1984	111	152	254	-	54	547	1,118
1985	96	176	467	-	46	590	1,375
1986	79	251	705	-	85	860	1,980
1987	123	403	890	-	219	864	2,499
1988	102	304	1,019	-	135	549	2,109
1989	68	231	932	-	86	615	1,932
1990	76	209	1,289	-	108	839	2,521
1991	80	291	1,617	-	111	744	2,843
1992	110	321	1,818	-	78	561	2,888
1993	109	307	1,666	-	151	565	2,798
1994	117	276	1,426	-	97	509	2,425
1995	130	256	1,631	-	110	439	2,566
1996	139	222	2,510	-	92	448	3,411
1997	99	190	2,663	-	49	377	3,378
1998	135	156	3,275	-	66	391	4,023
1999	173	161	3,656	-	71	374	4,435
2000	175	208	3,694	-	80	322	4,489
2001	150	180	3,678	-	78	424	4,510
2002	149	155	4,387	-	91	380	5,162
2003	167	133	4,988	-	75	395	5,758
2004	171	45	5,419	30	144	267	6,076
2005	171	74	5,897	78	137	305	6,662
2006	201	109	5,787	71	182	279	6,629

Notes: (i) 'Other' includes medical assistance, crew changes, obtaining charts, provisioning awaiting orders etc.

(ii) Vessels serviced "Off Limits" not included.

(iii) "Supply" figures prior to 2004 are included in "Bunkers" column.

TABLE 73: Comparative Return of Total Shipping Arriving at Gibraltar, 2005 - 2006

<u>MONTH</u>	<u>2005</u>		<u>2006</u>	
	<u>NUMBER OF VESSELS</u>	<u>GROSS TONNAGE</u>	<u>NUMBER OF VESSELS</u>	<u>GROSS TONNAGE</u>
JANUARY	683	16,462,322	735	17,849,735
FEBRUARY	677	17,810,217	655	17,271,759
MARCH	696	20,568,576	732	18,238,948
APRIL	779	22,011,357	714	17,300,145
MAY	757	20,401,005	797	14,491,435
JUNE	782	18,668,496	723	19,295,169
JULY	782	19,214,173	762	19,014,348
AUGUST	747	19,263,706	736	20,022,754
SEPTEMBER	841	21,313,980	769	20,506,695
OCTOBER	826	22,566,683	815	20,820,873
NOVEMBER	781	17,716,190	813	20,318,014
DECEMBER	617	15,217,961	737	18,351,373
TOTAL	8,968	231,214,666	8,988	223,481,248

TABLE 74: Arrivals/Departures by Air from/to UK, 1982 - 2006

YEAR	ARRIVALS (000's)						DEPARTURES (000's)					
	TOTAL		SCHEDULED		CHARTER		TOTAL		SCHEDULED		CHARTER	
	Seats Offered	Seats Used	Seats Offered	Seats Used	Seats Offered	Seats Used	Seats Offered	Seats Used	Seats Offered	Seats Used	Seats Offered	Seats Used
1982	60.0	47.5	35.6	27.0	24.4	20.5	60.0	47.6	35.6	26.7	24.3	20.9
1983	65.6	46.7	40.4	26.3	25.2	20.5	65.6	47.5	40.4	26.8	25.2	20.7
1984	61.3	50.3	34.6	27.4	26.7	22.9	61.2	51.0	34.6	27.6	26.7	23.4
1985	79.0	67.6	59.5	50.3	19.5	17.3	79.0	67.7	59.7	50.0	19.3	17.7
1986	101.7	83.2	96.9	79.1	4.8	4.1	101.8	84.1	96.9	80.1	4.9	4.0
1987	145.9	113.2	129.8	98.1	16.1	15.1	145.4	114.8	129.3	100.9	16.1	13.9
1988	208.7	151.2	196.0	139.6	12.7	11.6	208.3	156.1	195.6	144.6	12.7	11.5
1989	239.4	173.2	231.6	167.6	7.8	5.6	237.8	179.8	230.0	174.0	7.8	5.8
1990	172.0	141.5	165.8	136.8	6.2	4.7	175.1	148.5	168.9	143.8	6.2	4.7
1991	138.1	104.0	126.0	94.9	12.1	9.1	140.2	106.3	127.8	96.6	12.4	9.7
1992	127.4	98.1	127.0	97.7	0.4	0.4	128.2	101.0	127.7	100.5	0.5	0.4
1993	111.5	91.3	111.4	91.2	0.1	0.1	112.2	93.3	112.2	93.3	0.0	0.0
1994	106.4	85.2	106.4	85.2	0.0	0.0	107.1	86.9	207.2	86.9	0.0	0.0
1995	109.4	83.8	109.4	83.8	0.0	0.0	109.5	85.3	109.5	85.3	0.0	0.0
1996	98.7	78.1	98.7	78.1	0.0	0.0	98.1	78.2	98.1	78.2	0.0	0.0
1997	106.6	83.2	106.6	83.2	0.0	0.0	104.4	81.5	104.4	81.5	0.0	0.0
1998	121.5	92.0	120.4	91.0	1.2	1.1	120.2	91.0	119.0	90.1	1.2	0.9
1999	127.5	98.3	126.5	97.8	1.0	0.5	127.5	97.9	126.5	97.4	1.0	0.5
2000	139.4	104.3	138.6	103.7	0.8	0.5	138.9	107.1	138.1	106.6	0.8	0.5
2001	138.0	109.0	137.7	108.8	0.3	0.2	138.2	110.6	137.9	110.5	0.4	0.2
2002	147.2	116.6	146.3	115.7	0.9	0.9	147.0	114.8	146.1	114.0	0.9	0.9
2003	173.5	135.0	170.3	133.0	3.3	2.0	173.1	134.8	169.8	132.9	3.3	1.9
2004	207.6	157.9	206.4	157.0	1.2	0.9	207.6	158.3	206.4	157.3	1.2	0.9
2005	222.4	173.5	221.6	172.7	0.8	0.8	222.2	174.4	221.4	173.7	0.8	0.7
2006	202.7	165.2	202.0	164.6	0.7	0.6	202.6	166.0	201.9	165.4	0.7	0.6

Note: (i) Charter flights as from 1998 include all destinations.
(ii) Flights to and from Madrid commenced on 16th December 2006.
(iii) The yearly totals have been rounded off from the actual figure and need not necessarily equal the sum of the rounded off sub-totals.

ARRIVALS BY AIR FROM UK, 1982 - 2006

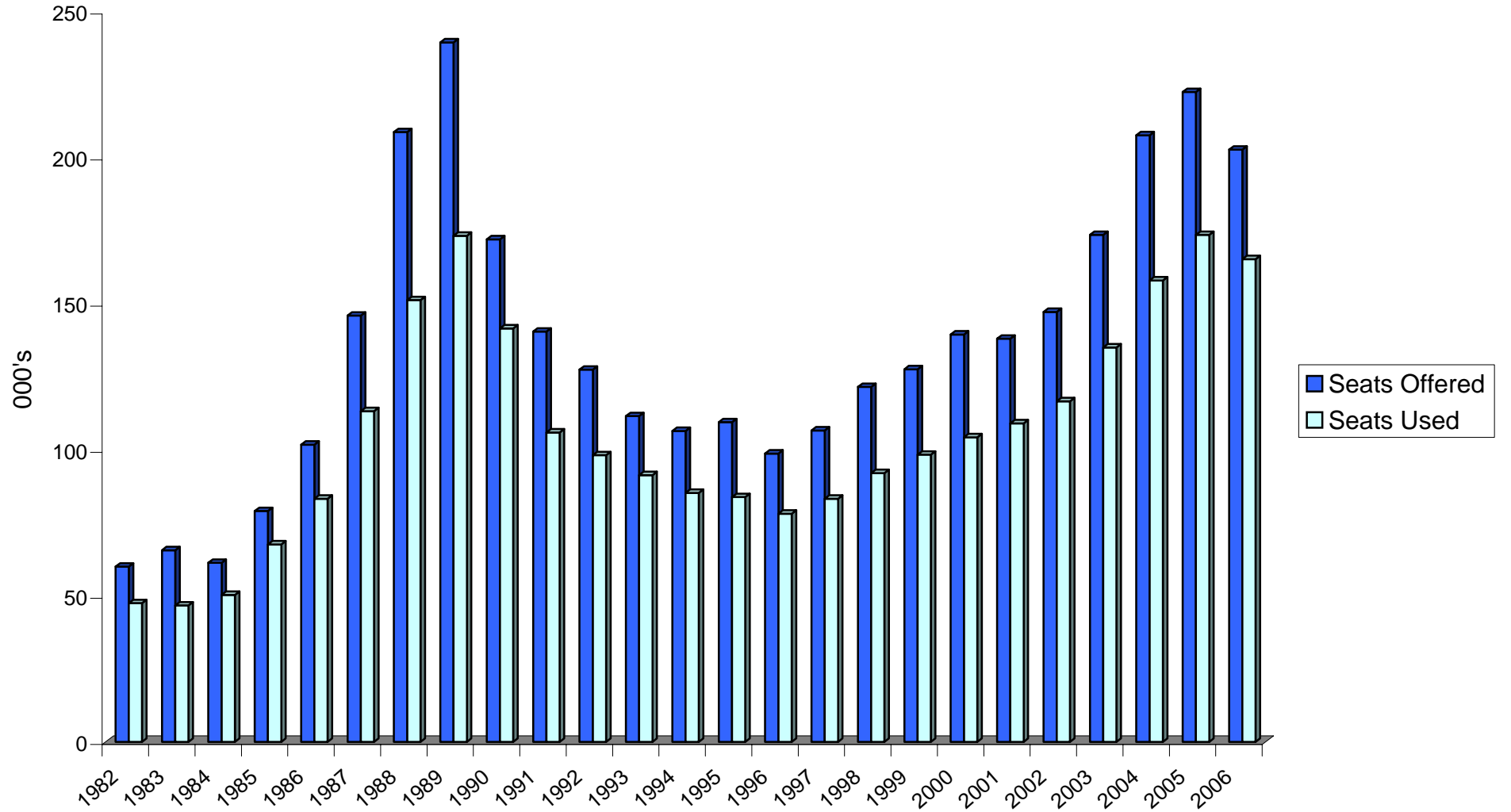


TABLE 75: Commercial Freight, Set Down/Picked Up, Gibraltar, 1979 - 2006

(000's kgs)

<u>YEAR</u>	<u>SET DOWN</u>	<u>PICKED UP</u>
1979	896	61
1980	447	38
1981	318	64
1982	481	44
1983	381	38
1984	333	36
1985	419	40
1986	523	59
1987	499	67
1988	599	40
1989	648	45
1990	797	95
1991	596	54
1992	476	64
1993	597	74
1994	518	49
1995	504	52
1996	406	58
1997	330	57
1998	406	69
1999	433	77
2000	419	74
2001	306	71
2002	289	60
2003	325	66
2004	320	61
2005	324	57
2006	296	52

Note : *Relates to freight from/to all destinations.*

TELECOMMUNICATIONS

TABLE 76: Number of Exchange Lines, 1974 - 2006

<u>YEAR</u>	<u>TOTAL NUMBER OF EXCHANGE LINES</u>
1974	5,037
1975	5,277
1976	5,560
1977	5,570
1978	6,065
1979	6,280
1980	6,585
1981	6,925
1982	7,117
1983	7,385
1984	7,364
1985	7,813
1986	8,119
1987	8,631
1988	9,181
1989	9,713
1990	10,690
1991	11,541
1992	12,831
1993	13,658
1994	15,153
1995	16,517
1996	17,500
1997	18,632
1998	20,380
1999	21,916
2000	23,541
2001	24,512
2002	24,070
2003	25,767
2004	25,354
2005	24,094
2006	24,116

TABLE 77: Number of Telephone Calls, 2000 - 2006

	<u>2000</u>	<u>2001</u>	<u>2002</u>	<u>2003</u>	<u>2004</u>	<u>2005</u>	<u>2006</u>
National Traffic Calls (million)	36.6	37.8	37.9	35	38	36.4	27.5
International Calls (million)	7.3	6.7	6.4	6.7	7	6.9	5.6
Operator Assisted Calls	27,758	20,953	16,895	15,813	102	0	0

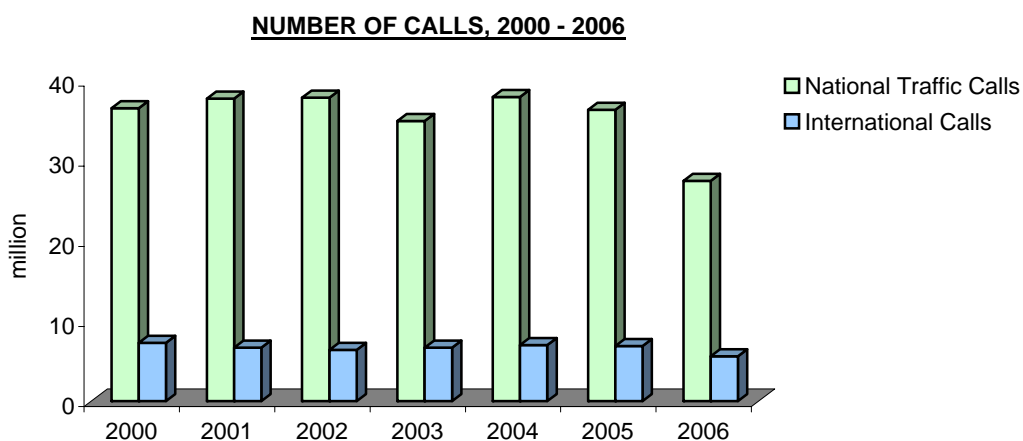
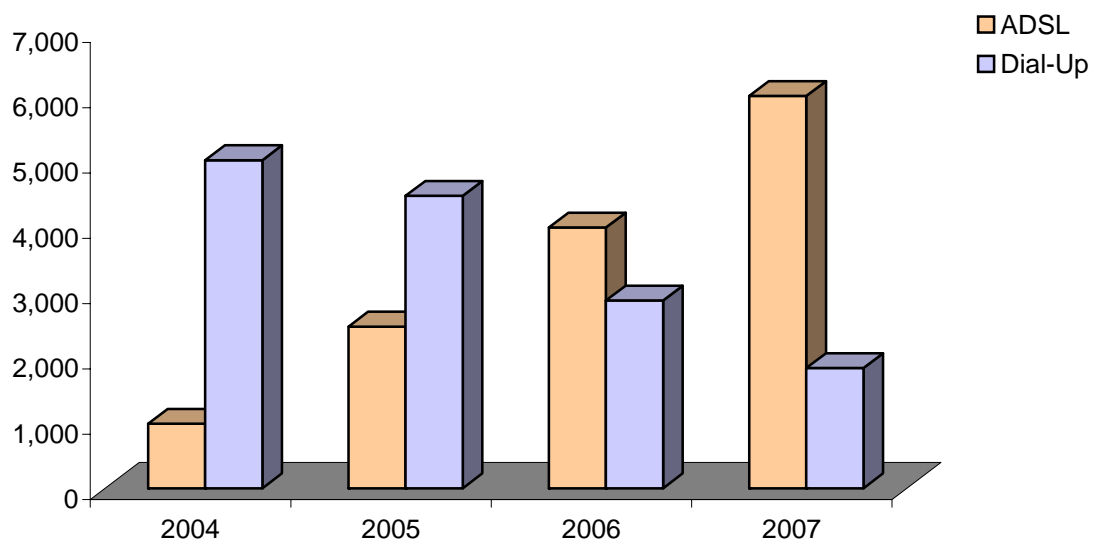


TABLE 78: Number of Internet Connections, 2004 - 2006

<u>YEAR</u> <u>(as at 31st March)</u>	<u>ADSL</u>	<u>DIAL-UP</u>	<u>TOTAL</u>
2004	989	5,028	6,017
2005	2,477	4,481	6,958
2006	3,996	2,878	6,874
2007	6,010	1,843	7,853

NUMBER OF INTERNET CONNECTIONS, 2004 - 2006



PUBLIC UTILITIES

WATER

TABLE 79: Supply and Billings of Potable Water, 1974 - 2006

Cubic Metres (000's)

<u>YEAR</u>	<u>SUPPLY</u>	<u>BILLINGS</u>
1974	691	446
1975	696	436
1976	605	446
1977	623	423
1978	618	418
1979	650	582
1980	682	550
1981	686	609
1982	691	527
1983	650	541
1984	623	509
1985	655	555
1986	691	582
1987	746	673
1988	841	727
1989	905	777
1990	932	796
1991	1,009	836
1992	1,049	903
1993	1,042	886
1994	1,021	921
1995	1,065	913
1996	1,057	864
1997	1,095	968
1998	1,109	980
1999	1,134	993
2000	1,148	1,005
2001	1,174	1,047
2002	1,135	1,051
2003	1,189	1,065
2004	1,223	1,126
2005	1,214	1,099
2006	1,241	1,116

ELECTRICITY

TABLE 80: Capacity, Generation and Billings of Electricity, 1974 - 2006

<u>YEAR</u>	<u>CAPACITY (i)</u> (MW)	<u>GENERATION</u> (KWH) (M)	<u>BILLINGS</u> (KWH) (M)
1974	18.8	47.9	44.0
1975	18.8	50.2	45.6
1976	18.4	52.4	47.6
1977	18.4	51.2	46.5
1978	18.3	51.2	49.7
1979	18.0	53.7	50.2
1980	19.4	54.1	51.3
1981	19.3	56.3	51.6
1982	25.7	58.9	55.3
1983	23.1	61.1	55.1
1984	20.9	61.3	54.2
1985	20.9	62.7	55.5
1986	20.9	64.8	58.1
1987	20.9	69.9	61.7
1988	27.1	74.0	67.6
1989	27.1	81.3	70.1
1990	27.1	79.4	78.2
1991	27.1	91.6	81.0
1992	27.0	99.0	83.7
1993	32.7	102.7	85.2
1994	32.7	106.2	88.7
1995	37.7	108.2	93.6
1996	37.7	110.4	93.2
1997	37.7	111.2	95.5
1998	37.7	115.7	98.3
1999	37.7	120.1	103.9
2000	37.7	125.4	104.5
2001	37.7	126.2	113.2
2002	37.7	128.7	117.6
2003	37.7	134.3	124.0
2004	37.7	135.6	129.3
2005	37.7	145.4	139.8
2006	42.8	151.2	144.4

Notes: (i) Refers to actual continuous maximum rating of the generators.

(ii) The difference between "Generation" and "Billing" is attributed to electricity consumed by the power stations, distribution transformers and cables and public lighting.

(iii) MW - Megawatts, KWH - Kilowatt Hours, M - Millions

(iv) The capacity figures in respect of the years 1995 to 2001 have been revised.

METEOROLOGICAL DATA

TABLE 81: Monthly Rainfall (Millimetres), 2001 - 2006

<u>MONTH</u>	<u>2001</u>	<u>2002</u>	<u>2003</u>	<u>2004</u>	<u>2005</u>	<u>2006</u>
JANUARY	107.4	24.2	98.0	31.8	0.8	166.4
FEBRUARY	47.6	112.3	137.0	100.6	269.0	75.2
MARCH	1.2	94.4	148.0	56.6	96.8	104.4
APRIL	79.0	67.3	81.8	88.1	3.8	54.4
MAY	21.0	22.0	0.2	87.6	4.4	0.6
JUNE	0.8	12.8	-	-	Tr.	2.8
JULY	Tr.	-	Tr.	Tr.	-	2.2
AUGUST	Tr.	-	Tr.	Tr.	0.6	6.2
SEPTEMBER	39.4	22.0	32.6	0.6	4.6	6.4
OCTOBER	72.4	204.0	197.3	37.2	95.4	133.6
NOVEMBER	55.4	259.5	75.2	50.0	72.2	100.6
DECEMBER	306.0	133.0	191.6	95.8	101.4	50.4
YEARLY TOTAL	730.2	951.5	961.7	548.3	649.0	703.2

TOTAL YEARLY RAINFALL, 2001 - 2006

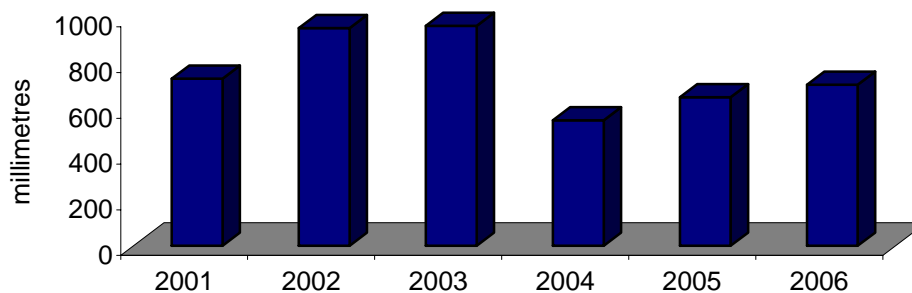


TABLE 82: Daily Mean Temperature °C., 2001 - 2006

<u>MONTH</u>	<u>2001</u>	<u>2002</u>	<u>2003</u>	<u>2004</u>	<u>2005</u>	<u>2006</u>
JANUARY	13.9	13.5	13.1	14.6	12.8	12.5
FEBRUARY	14.4	13.9	13.3	14.2	12.5	13.0
MARCH	16.9	14.9	15.6	15.1	14.7	15.3
APRIL	17.7	16.3	16.7	15.5	17.3	17.7
MAY	18.5	18.5	19.6	18.0	20.3	19.4
JUNE	22.1	21.2	23.1	21.7	22.0	22.2
JULY	23.7	23.7	24.5	24.4	24.9	24.7
AUGUST	25.1	24.3	25.2	24.5	23.7	24.3
SEPTEMBER	22.6	22.6	23.0	22.8	21.6	23.2
OCTOBER	20.2	19.5	19.6	19.8	19.9	20.5
NOVEMBER	15.4	16.5	15.9	15.8	15.4	17.9
DECEMBER	14.5	14.5	14.1	13.7	14.3	14.1
YEARLY AVERAGE	18.8	18.3	18.6	18.3	18.3	18.7

DAILY MEAN TEMPERATURE, 2001 - 2006

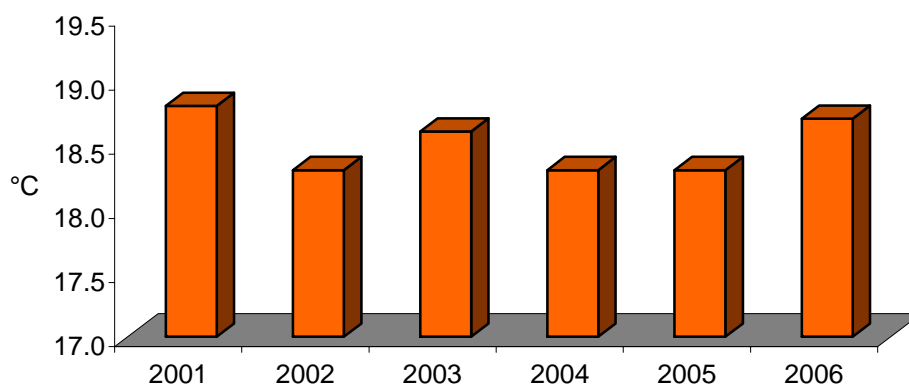


TABLE 83: Daily Mean Hours of Sunshine, 2001 - 2006

<u>MONTH</u>	<u>2001</u>	<u>2002</u>	<u>2003</u>	<u>2004</u>	<u>2005</u>	<u>2006</u>
JANUARY	6.0	4.3	6.3	7.2	5.4	5.0
FEBRUARY	7.2	6.7	5.9	3.8	7.1	5.9
MARCH	10.0	5.9	3.9	6.2	4.7	7.2
APRIL	6.5	8.6	7.9	9.2	8.9	7.9
MAY	10.3	9.8	10.3	8.3	9.8	7.5
JUNE	11.7	10.9	10.8	11.1	10.7	10.3
JULY	10.8	11.6	10.8	10.5	11.3	10.4
AUGUST	10.3	10.9	10.3	9.2	9.7	10.7
SEPTEMBER	7.7	8.3	8.9	8.7	8.8	8.8
OCTOBER	6.0	6.3	4.2	6.5	6.1	5.1
NOVEMBER	4.4	5.3	5.3	4.2	5.8	4.2
DECEMBER	3.0	5.4	4.8	4.4	3.6	4.1
YEARLY AVERAGE	7.8	7.8	7.4	7.4	7.7	7.3

DAILY MEAN HOURS OF SUNSHINE, 2001 - 2006

