

GOVERNMENT OF GIBRALTAR

HOTEL OCCUPANCY
SURVEY
2001

STATISTICS OFFICE

PREFACE

The Statistics (Hotel Occupancy) Order 1971 requires that the Government Statistician prepares a report and summary of the findings of the Hotel Occupancy Survey to be laid before the House of Assembly.

This is the twenty-sixth such report and it contains a summary of the statistics collected for the years 1975 – 2001.

I must express my thanks to the hotels for their continued co-operation in the conduct of this survey.

GOVERNMENT STATISTICIAN

FEBRUARY 2002

- C O N T E N T S -

		<u>PAGE</u>
A.	Definitions and Notes	
B.	Tables	1 - 44
<u>LIST OF TABLES</u>		
Table 1	General Analysis, all hotels 1975 - 2001	1
Chart	All Arrivals at Hotels, 1975 - 2001	2
Chart	% Sleeper Ocupancy, All Arrivals, 1989 - 2001	3
Chart	Average Length of Stay, All Arrivals, 1975 - 2001	4
Table 2(a)	Room Nights Sold and Offered, all hotels 1995 - 1999 (All Arrivals)	5
Table 2(b)	Room Nights Sold and Offered, all hotels 2000 - 2001 (All Arrivals)	6
Chart	Room Nights Sold, All Arrivals, 1998 - 2001	7
Table 2 (c)	Room Nights Sold and Offered, all hotels 1995 - 1999 (Tourist Arrivals)	8
Table 2 (d)	Room Nights Sold and Offered, all hotels 2000 - 2001 (Tourist Arrivals)	9
Chart	Room Nights Sold, Tourist Arrivals, 1998 - 2001	10
Table 3(a)	Room Occupancy Rates, 1991 - 1995	11
Table 3(b)	Room Occupancy Rates, 1996 - 2001	12
Chart	Room Occupancy Rates, All Arrivals, 1998 - 2001	13
Chart	Room Occupancy Rates, Tourist Arrivals, 1998 - 2001	14
Table 4(a)	Number of Arrivals by Month, all hotels 1975 - 1981	15
Table 4(b)	Number of Arrivals by Month, all hotels 1982 - 1988	16
Table 4(c)	Number of Arrivals by Month, all hotels 1989 - 1995	17
Table 4(d)	Number of Arrivals by Month, all hotels 1996 - 2001	18
Chart	All Arrivals at Hotels, 1996 - 2001	19
Table 5(a)	Guest Nights Sold/Offered, % Sleeper Occupancy, all hotels 1975 - 1978 (All Arrivals)	20
Table 5(b)	Guest Nights Sold/Offered, % Sleeper Occupancy, all hotels 1979 - 1982 (All Arrivals)	21
Table 5(c)	Guest Nights Sold/Offered, % Sleeper Occupancy, all hotels 1983 - 1986 (All Arrivals)	22

- C O N T E N T S -

		<u>PAGE</u>
<u>LIST OF TABLES</u>		
Table 5(d)	Guest Nights Sold/Offered, % Sleeper Occupancy, all hotels 1987 - 1990 (All Arrivals)	23
Table 5(e)	Guest Nights Sold/Offered, % Sleeper Occupancy, all hotels 1991 - 1994 (All Arrivals)	24
Table 5(f)	Guest Nights Sold/Offered, % Sleeper Occupancy, all hotels 1995 - 1998 (All Arrivals)	25
Table 5(g)	Guest Nights Sold/Offered, % Sleeper Occupancy, all hotels 1999 - 2001 (All Arrivals)	26
Chart	Guest Nights Sold, All Arrivals, 1999 - 2001	27
Chart	Guest Nights Offered, All Arrivals, 1999 - 2001	28
Chart	% Sleeper Occupancy, All Arrivals, 1999 - 2001	29
Table 6(a)	Guest Nights Sold/Offered, % Sleeper Occupancy, all hotels 1975 - 1978 (Tourist Arrivals)	30
Table 6(b)	Guest Nights Sold/Offered, % Sleeper Occupancy, all hotels 1979 - 1982 (Tourist Arrivals)	31
Table 6(c)	Guest Nights Sold/Offered, % Sleeper Occupancy, all hotels 1983 - 1986 (Tourist Arrivals)	32
Table 6(d)	Guest Nights Sold/Offered, % Sleeper Occupancy, all hotels 1987 - 1990 (Tourist Arrivals)	33
Table 6(e)	Guest Nights Sold/Offered, % Sleeper Occupancy, all hotels 1991 - 1994 (Tourist Arrivals)	34
Table 6(f)	Guest Nights Sold/Offered, % Sleeper Occupancy, all hotels 1995 - 1998 (Tourist Arrivals)	35
Table 6(g)	Guest Nights Sold/Offered, % Sleeper Occupancy, all hotels 1999 - 2001 (Tourist Arrivals)	36
Chart	Guest Nights Sold, Tourist Arrivals, 1999 - 2001	37
Chart	% Sleeper Occupancy, Tourist Arrivals, 1999 - 2001	38
Table 7(a)	Average Length of Stay per person (nights), all hotels 1975 - 2001 (All Arrivals)	39
Chart	Average Length of Stay, All Arrivals, 1999 - 2001	40
Table 7(b)	Average Length of Stay per person (nights), all hotels 1975 - 2001 (Tourist Arrivals)	41
Chart	Average Length of Stay, Tourist Arrivals, 1999 - 2001	42
Table 8	Summary Of Hotel Statistics, 1968 - 2001	43
Chart	Arrivals at Hotels, 1988 - 2001	44

A. Definitions and Notes

- (a) Tourist: A tourist is a person who is primarily in Gibraltar for the purpose of a holiday. It is nevertheless up to the discretion of the individual hotels who to include under this category.
- (b) Guest Nights: Calculated on the basis of “one guest x one night”.
- (c) Sleeper Occupancy: Calculated as the percentage of guest-nights sold over guest-nights offered. It should be noted that this measure does not necessarily give an accurate indication of the ability of the hotel to accept more guests. e.g. one person staying in a room with two beds gives a 50% sleeper occupancy and a 100% room occupancy.
- (d) In interpreting the figures it should be noted that:
- From April 1976, the Victoria Hotel is not included.
 - The Continental Hotel is included as from January 1986.
 - The Sunrise Motel is included for the period January 1992 to December 1994.
 - As from September 1992, the Montarik Hotel is not included.
 - As from November 1992, the Gibraltar Beach Hotel is not included.
 - The Cannon Hotel is included with effect from July 1995.
- (e) Abbreviations: GNS - Guest Nights Sold, GNO - Guest Nights Offered.

B. Tables

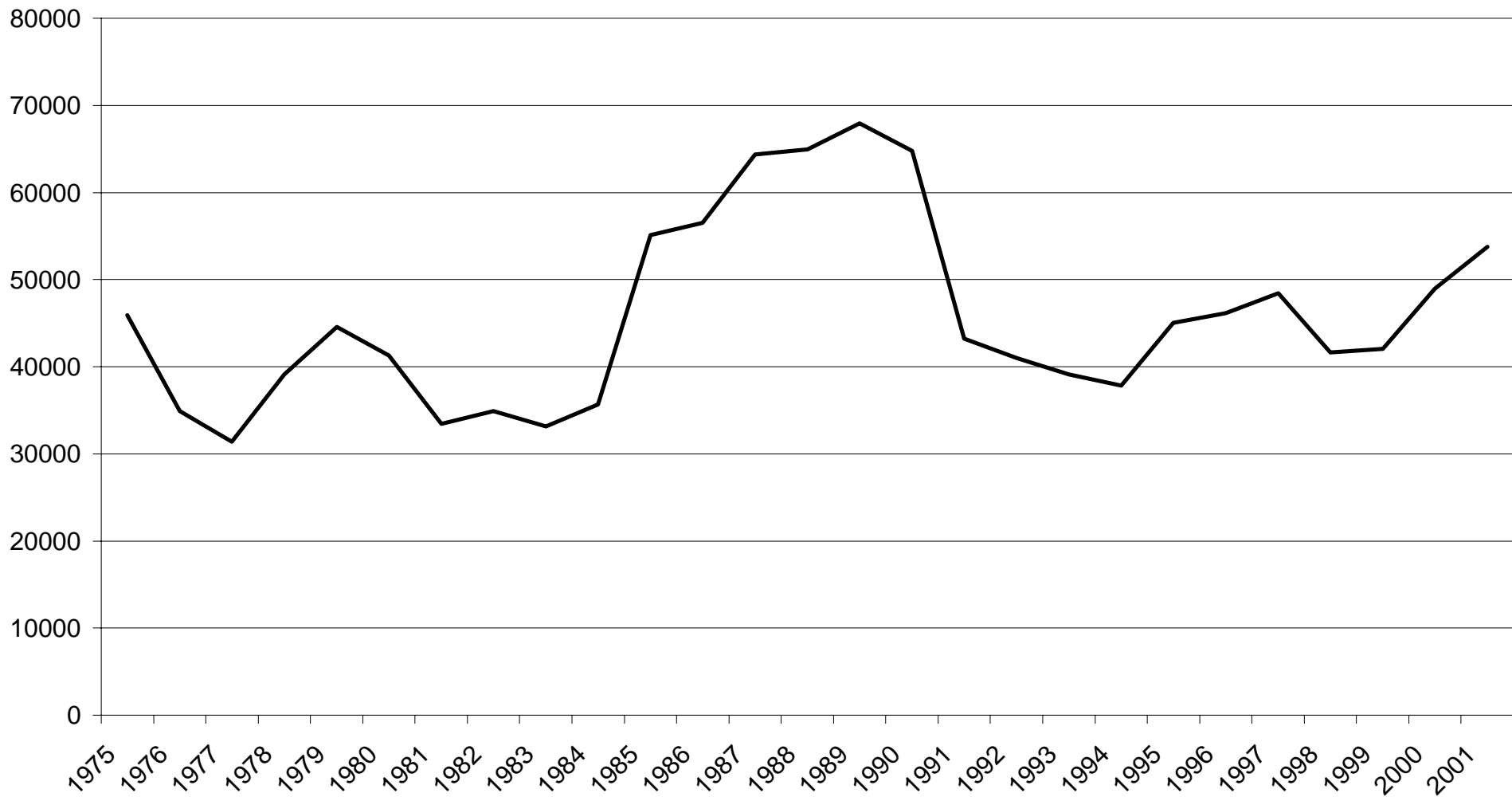
Table 1: General Analysis, All Hotels 1975 - 2001

YEAR	ALL ARRIVALS	RNO (00's)	RNS (00's) ALL	% ROOM OCCUPANCY ALL	GNO (000's)	GNS (000's) ALL	% SLEEPER OCCUPANCY ALL	AVERAGE LGTH. OF STAY ALL
1975	45894	n/a	n/a	n/a	581	308	53.0	6.7
1976	34933	n/a	n/a	n/a	563	245	43.5	7.0
1977	31402	n/a	n/a	n/a	526	208	39.4	6.6
1978	39102	n/a	n/a	n/a	539	257	47.8	6.6
1979	44569	n/a	n/a	n/a	559	296	53.0	6.6
1980	41308	n/a	n/a	n/a	551	256	46.5	6.2
1981	33417	n/a	n/a	n/a	519	188	36.2	5.6
1982	34896	n/a	n/a	n/a	529	223	42.2	6.4
1983	33142	n/a	n/a	n/a	546	210	38.4	6.3
1984	35690	n/a	n/a	n/a	546	226	41.3	6.3
1985	55119	n/a	n/a	n/a	552	282	51.0	5.1
1986	56525	n/a	n/a	n/a	519	266	51.3	4.6
1987	64349	n/a	n/a	n/a	535	278	52.3	4.3
1988	64942	n/a	n/a	61.3	551	286	52.0	4.4
1989	67934	n/a	n/a	53.3	501	220	44.0	3.2
1990	64793	n/a	n/a	51.3	481	197	40.8	3.0
1991	43193	n/a	n/a	50.6	502	178	35.5	4.1
1992	40986	2367	976	41.2	497	157	31.6	3.8
1993	39123	1946	941	48.4	391	157	40.2	4.0
1994	37851	1986	885	44.5	401	149	37.2	3.9
1995	45056	1919	884	46.1	369	144	39.2	3.2
1996	46142	1908	826	43.3	372	141	37.8	3.1
1997	48420	1904	900	47.3	370	144	39.0	3.0
1998	41616	1733	930	53.6	335	145	43.1	3.5
1999	42031	1792	991	55.3	351	154	43.7	3.7
2000	48949	1790	1054	58.9	368	164	44.6	3.4
2001	53776	1789	1149	64.2	366	179	48.9	3.3

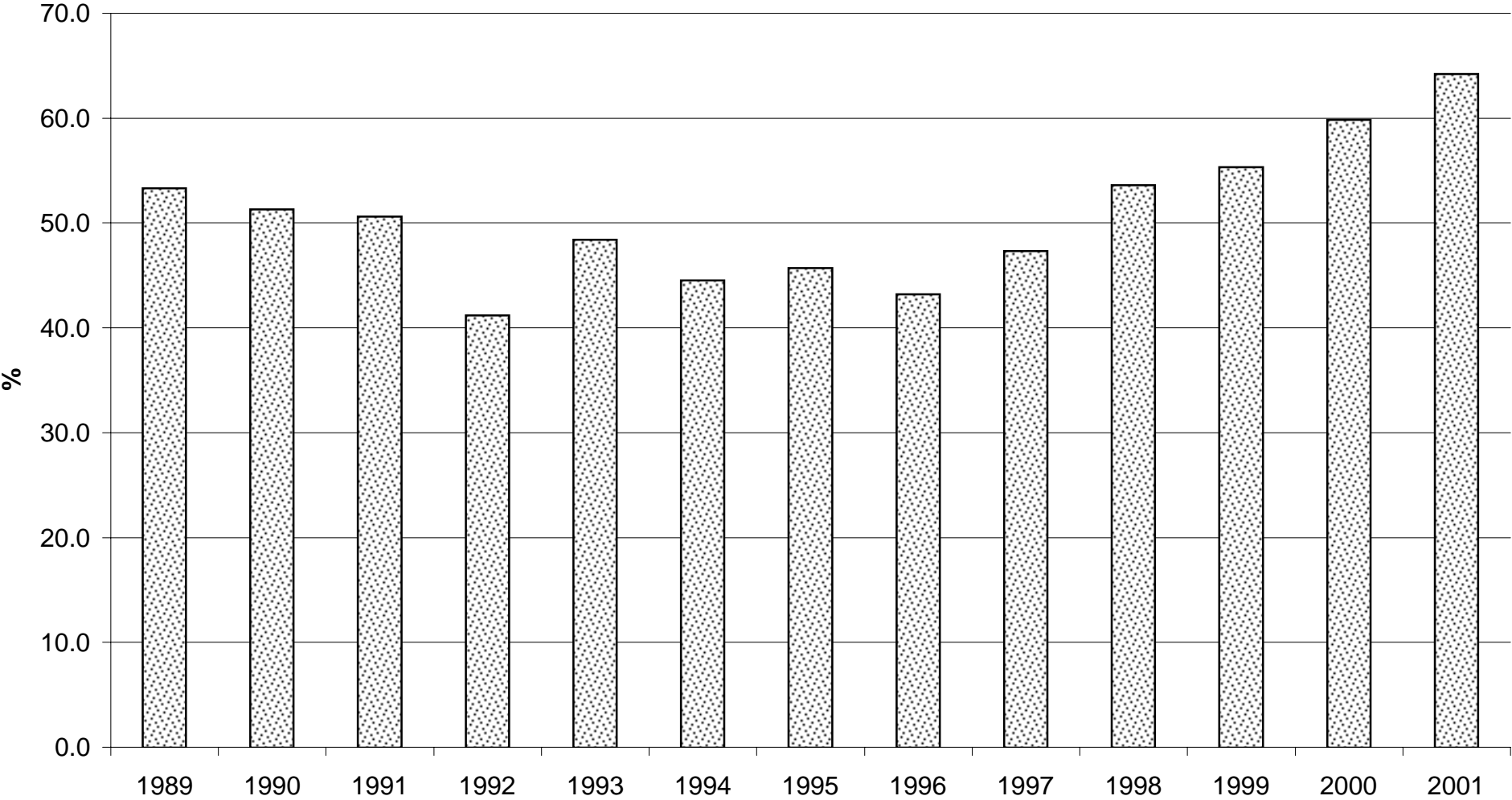
Notes:

1. RNO - Room Nights Offered.
2. RNS - Room nights Sold.
3. GNO - Guest Nights Offered.
4. GNS - Guest Nights Sold.
5. With effect from January 1992, hotels were required under the legislation to submit returns which included the % room occupancy figures. For the period 1988 to 1991, these figures were provided voluntarily by the hotels.
6. The RNO and RNS figures for 1995 and 1996 have been adjusted as result of a computer program malfunction in the cumulative total for those years. The corresponding occupancy rates have also been amended.

ALL ARRIVALS AT HOTELS, 1975 - 2001



% ROOM OCCUPANCY, ALL ARRIVALS, 1989 - 2001



AVERAGE LENGTH OF STAY, ALL ARRIVALS, 1975 - 2001

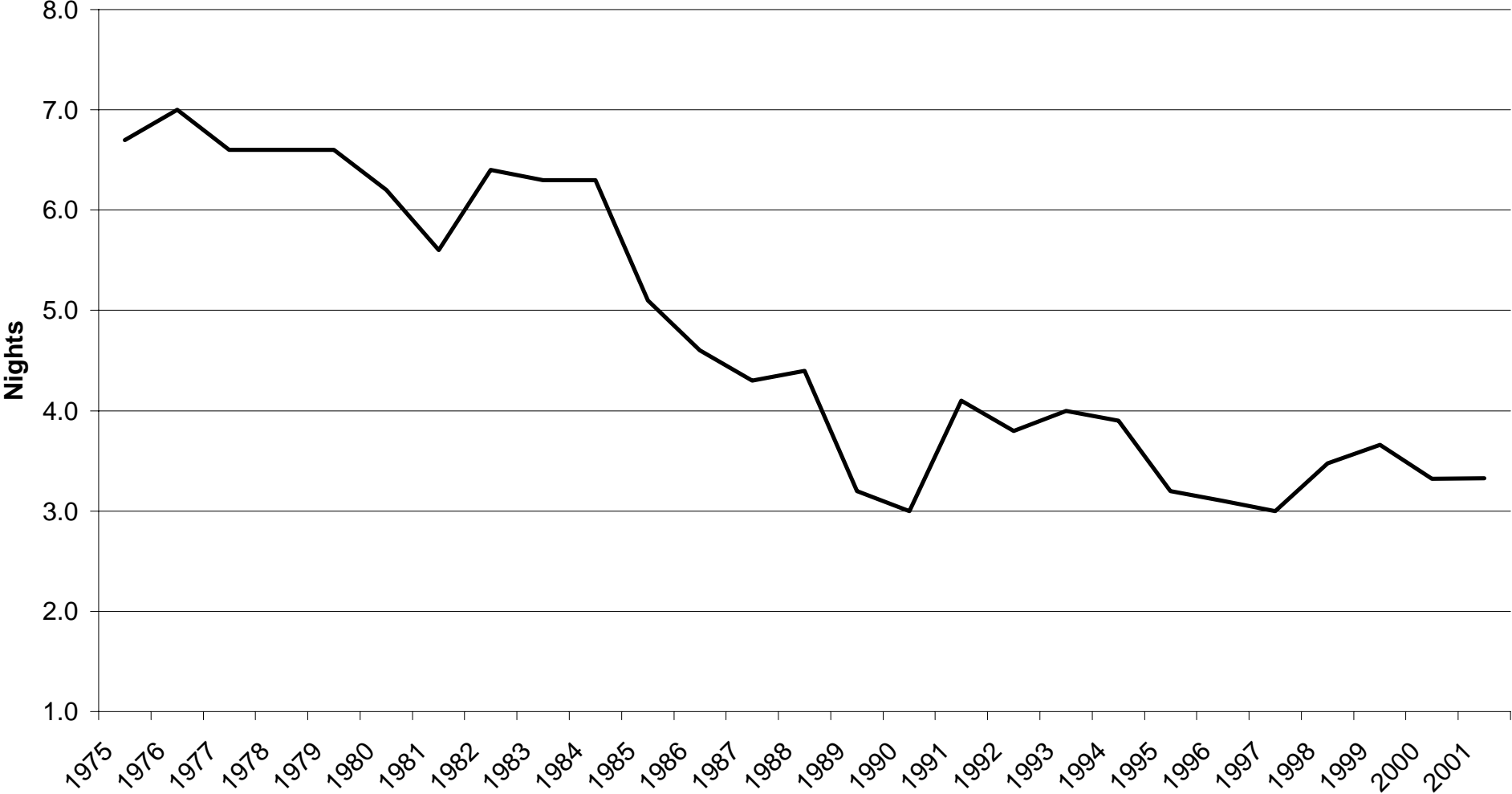


Table 2(a): Room Nights Sold and Offered, all hotels 1995 -1999

ALL ARRIVALS

MONTH	ROOM NIGHTS SOLD (00's)					ROOM NIGHTS OFFERED (00's)				
	1995	1996	1997	1998	1999	1995	1996	1997	1998	1999
JANUARY	36	49	46	52	59	157	162	160	150	152
FEBRUARY	58	53	59	58	60	147	154	149	130	137
MARCH	67	70	72	72	89	159	165	173	150	152
APRIL	82	71	68	69	84	155	160	158	134	148
MAY	80	79	84	87	83	158	161	163	141	152
JUNE	85	80	82	82	89	157	154	158	140	149
JULY	94	65	78	80	83	167	158	162	144	152
AUGUST	86	71	88	94	99	167	159	162	144	152
SEPTEMBER	104	93	99	103	103	161	158	158	148	148
OCTOBER	79	79	90	90	98	162	160	161	152	151
NOVEMBER	57	58	80	82	91	161	158	159	148	147
DECEMBER	53	58	59	61	53	167	160	151	152	151
TOTAL	884	826	900	930	991	1919	1908	1904	1733	1792

Note: Yearly totals have been rounded off and need not necessarily equal the sum of the rounded-off monthly figures. The yearly totals for 1995 and 1996 have been adjusted as a result of a program malfunction in the cumulative total for those years.

Table 2(b): Room Nights Sold and Offered, all hotels 2000 - 2001

ALL ARRIVALS

MONTH	ROOM NIGHTS SOLD (00's)		ROOM NIGHTS OFFERED (00's)	
	2000	2001	2000	2001
JANUARY	46	67	150	151
FEBRUARY	59	76	141	137
MARCH	78	102	151	151
APRIL	86	97	147	147
MAY	125	108	152	151
JUNE	106	111	148	147
JULY	96	101	151	151
AUGUST	94	100	151	151
SEPTEMBER	119	120	148	148
OCTOBER	98	112	151	152
NOVEMBER	78	87	147	148
DECEMBER	68	68	151	152
TOTAL	1054	1149	1790	1789

Note: Yearly totals have been rounded off and need not necessarily equal the sum of the rounded-off monthly figures.

ROOM NIGHTS SOLD, ALL ARRIVALS, 1998 - 2001

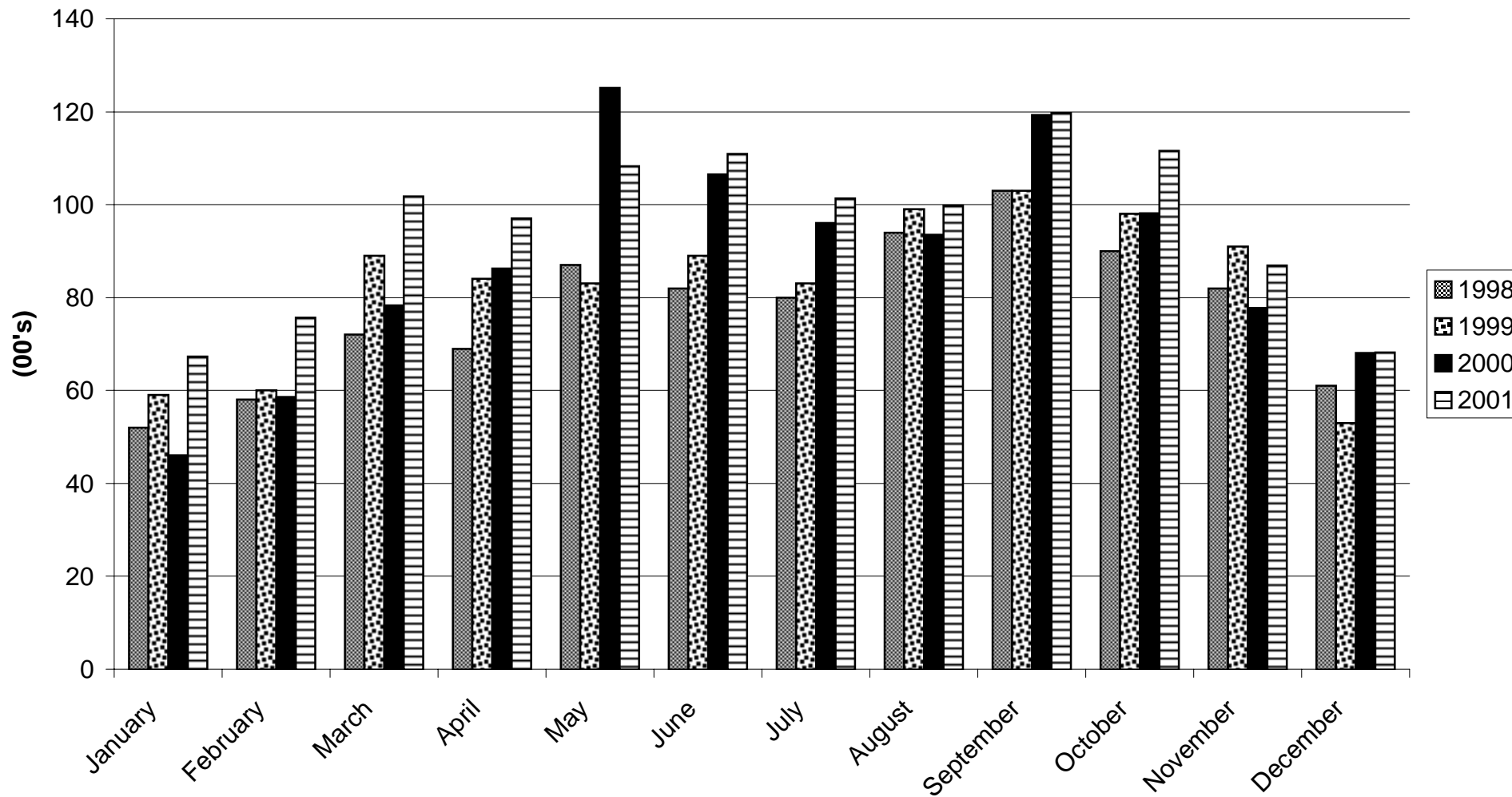


Table 2(c): Room Nights Sold and Offered, all hotels 1995 -1999

TOURIST ARRIVALS

MONTH	ROOM NIGHTS SOLD (00's)					ROOM NIGHTS OFFERED (00's)				
	1995	1996	1997	1998	1999	1995	1996	1997	1998	1999
JANUARY	25	27	24	35	33	157	162	160	150	152
FEBRUARY	38	34	35	38	37	147	154	149	130	137
MARCH	49	44	45	54	52	159	165	173	150	152
APRIL	60	48	40	45	49	155	160	158	134	148
MAY	56	51	52	57	52	158	161	163	141	152
JUNE	65	50	47	53	55	157	154	158	140	149
JULY	64	43	44	50	50	167	158	162	144	152
AUGUST	62	47	49	61	61	167	159	162	144	152
SEPTEMBER	82	54	55	70	65	161	158	158	148	148
OCTOBER	63	48	45	60	63	162	160	161	152	151
NOVEMBER	44	35	40	48	52	161	158	159	148	147
DECEMBER	41	33	30	35	34	167	160	151	152	151
TOTAL	649	515	500	605	602	1919	1908	1904	1733	1792

Note: Yearly totals have been rounded off and need not necessarily equal the sum of the rounded-off monthly figures. The yearly totals for 1995 and 1996 have been adjusted as a result of a program malfunction in the cumulative total for those years.

Table 2(d): Room Nights Sold and Offered, all hotels 2000 - 2001

TOURIST ARRIVALS

MONTH	ROOM NIGHTS SOLD (00's)		ROOM NIGHTS OFFERED (00's)	
	2000	2001	2000	2001
JANUARY	30	40	150	151
FEBRUARY	35	46	141	137
MARCH	50	60	151	151
APRIL	56	53	147	147
MAY	77	64	152	151
JUNE	66	71	148	147
JULY	60	67	151	151
AUGUST	65	68	151	151
SEPTEMBER	80	82	148	148
OCTOBER	66	74	151	152
NOVEMBER	50	55	147	148
DECEMBER	41	41	151	152
TOTAL	675	721	1790	1789

Note: Yearly totals have been rounded off and need not necessarily equal the sum of the rounded-off monthly figures.

ROOM NIGHTS SOLD, TOURIST ARRIVALS, 1998 - 2001

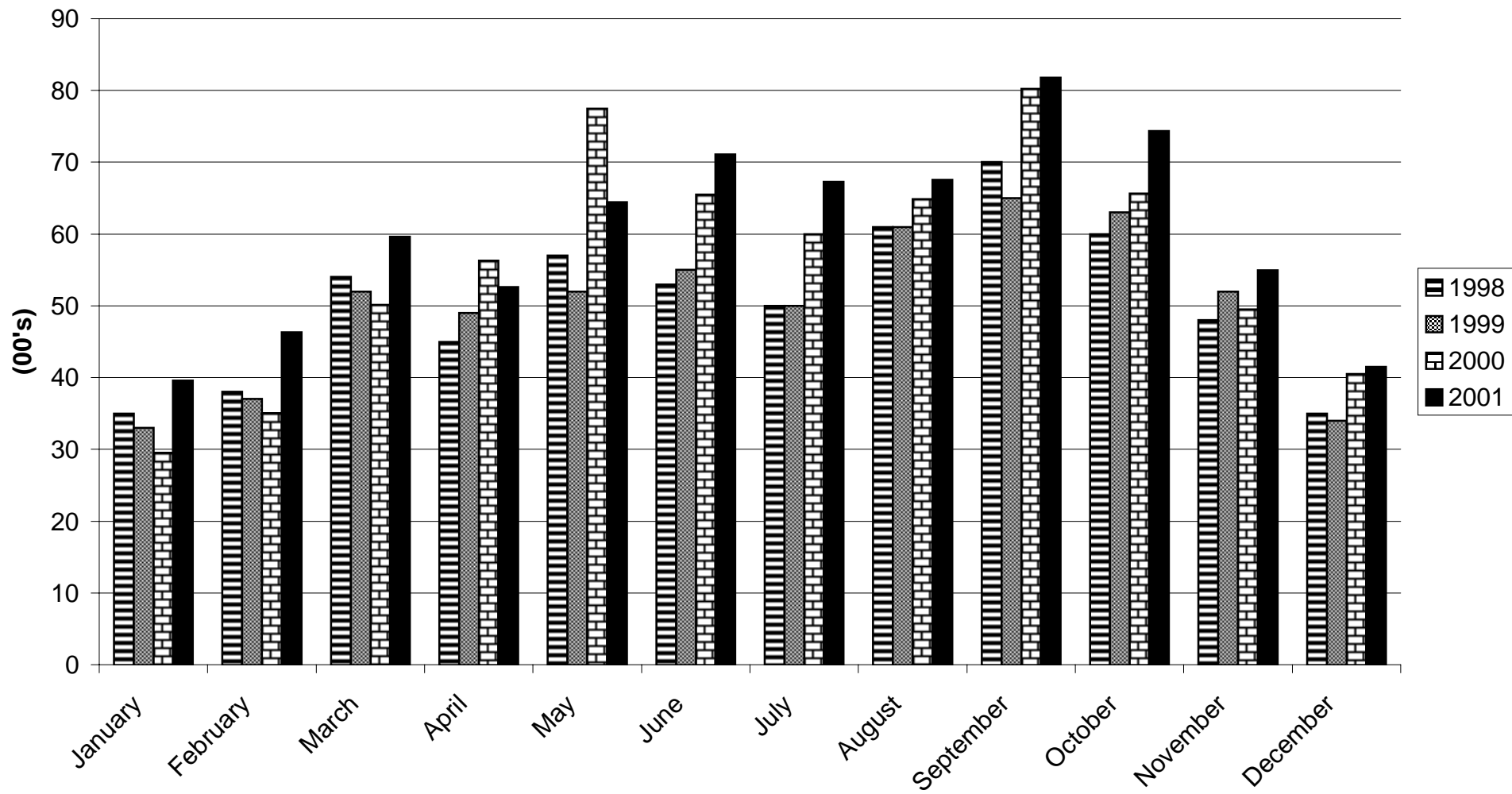


Table 3(a): Room Occupancy Rates, 1991 -1995

MONTH	ALL ARRIVALS					TOURIST ARRIVALS				
	1991	1992	1993	1994	1995	1991	1992	1993	1994	1995
JANUARY	40.3	30.1	30.6	37.5	23.1	16.0	17.4	15.9	23.6	16.2
FEBRUARY	48.1	30.2	42.5	39.0	39.7	18.6	17.8	22.4	23.6	26.2
MARCH	50.6	41.7	45.6	45.5	42.1	15.3	25.1	28.0	27.3	30.8
APRIL	39.9	40.2	46.3	43.5	52.7	19.6	25.3	29.3	26.8	38.8
MAY	49.7	46.2	57.0	49.7	50.3	23.8	27.1	33.6	28.4	35.4
JUNE	49.1	44.5	55.7	48.9	54.2	20.3	26.3	36.1	31.6	41.2
JULY	47.3	45.8	48.9	51.4	56.0	24.0	23.3	29.8	31.9	38.1
AUGUST	48.8	38.1	48.9	42.5	51.4	22.9	24.7	31.7	28.0	37.3
SEPTEMBER	52.3	51.3	63.0	57.6	64.4	28.0	28.5	37.2	38.8	51.0
OCTOBER	54.4	46.9	58.3	50.4	48.5	25.3	27.3	35.3	32.2	38.7
NOVEMBER	38.0	43.8	46.2	36.5	35.2	20.2	25.5	29.5	24.7	27.0
DECEMBER	30.7	35.1	36.3	31.5	31.7	17.3	23.7	24.9	22.7	24.5
TOTAL	50.6	41.2	48.4	44.5	46.1	23.7	24.3	29.5	28.3	33.8

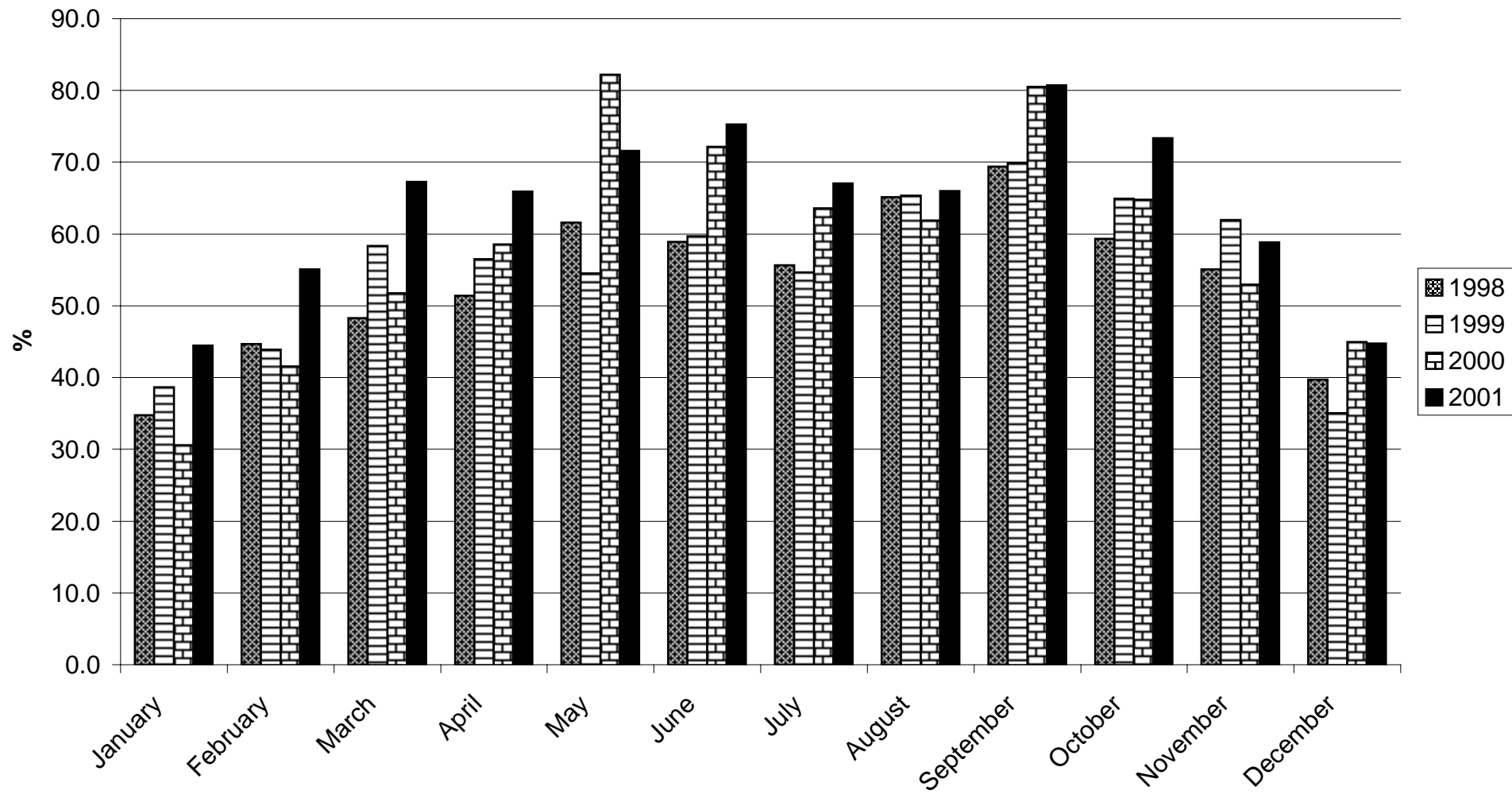
Note

Table 3(b): Room Occupancy Rates, 1996 - 2001

MONTH	ALL ARRIVALS						TOURIST ARRIVALS					
	1996	1997	1998	1999	2000	2001	1996	1997	1998	1999	2000	2001
JANUARY	30.4	28.6	34.8	38.7	30.6	44.4	16.3	14.8	23.1	21.9	19.6	26.1
FEBRUARY	34.2	39.9	44.7	43.9	41.6	55.1	21.8	23.4	29.4	26.9	24.8	33.7
MARCH	42.6	41.7	48.3	58.4	51.7	67.3	26.9	26.3	36.0	34.0	33.1	39.4
APRIL	44.2	43.3	51.4	56.5	58.6	66.0	30.1	25.1	33.5	32.9	38.3	35.8
MAY	49.3	51.5	61.6	54.5	82.2	71.6	31.7	31.5	40.4	34.4	50.9	42.6
JUNE	51.8	52.2	58.9	59.7	72.2	75.3	32.6	30.0	37.7	37.1	44.4	48.2
JULY	41.0	48.3	55.7	54.6	63.6	67.0	27.4	27.0	34.6	32.6	39.6	44.5
AUGUST	44.5	54.3	65.1	65.4	61.9	66.0	29.7	30.2	42.4	40.2	42.9	44.7
SEPTEMBER	59.0	62.5	69.4	69.9	80.5	80.7	34.3	35.0	47.0	43.9	54.2	55.2
OCTOBER	49.4	56.1	59.3	64.9	64.8	73.3	30.2	28.2	39.5	41.6	43.4	48.9
NOVEMBER	37.0	50.7	55.1	62.0	52.9	58.8	22.5	25.4	32.2	35.0	33.7	37.2
DECEMBER	36.2	38.9	39.7	35.1	45.0	44.8	20.4	19.7	23.1	22.4	26.8	27.3
TOTAL	43.3	47.3	53.6	55.3	58.9	64.2	27.0	26.3	34.9	33.6	37.7	40.3

Note: The yearly total for 1996 has been adjusted as a result of a program irregularity in the cumulative total for that year.

ROOM OCCUPANCY RATES, ALL ARRIVALS, 1998 - 2001



ROOM OCCUPANCY RATES, TOURIST ARRIVALS, 1998 - 2001

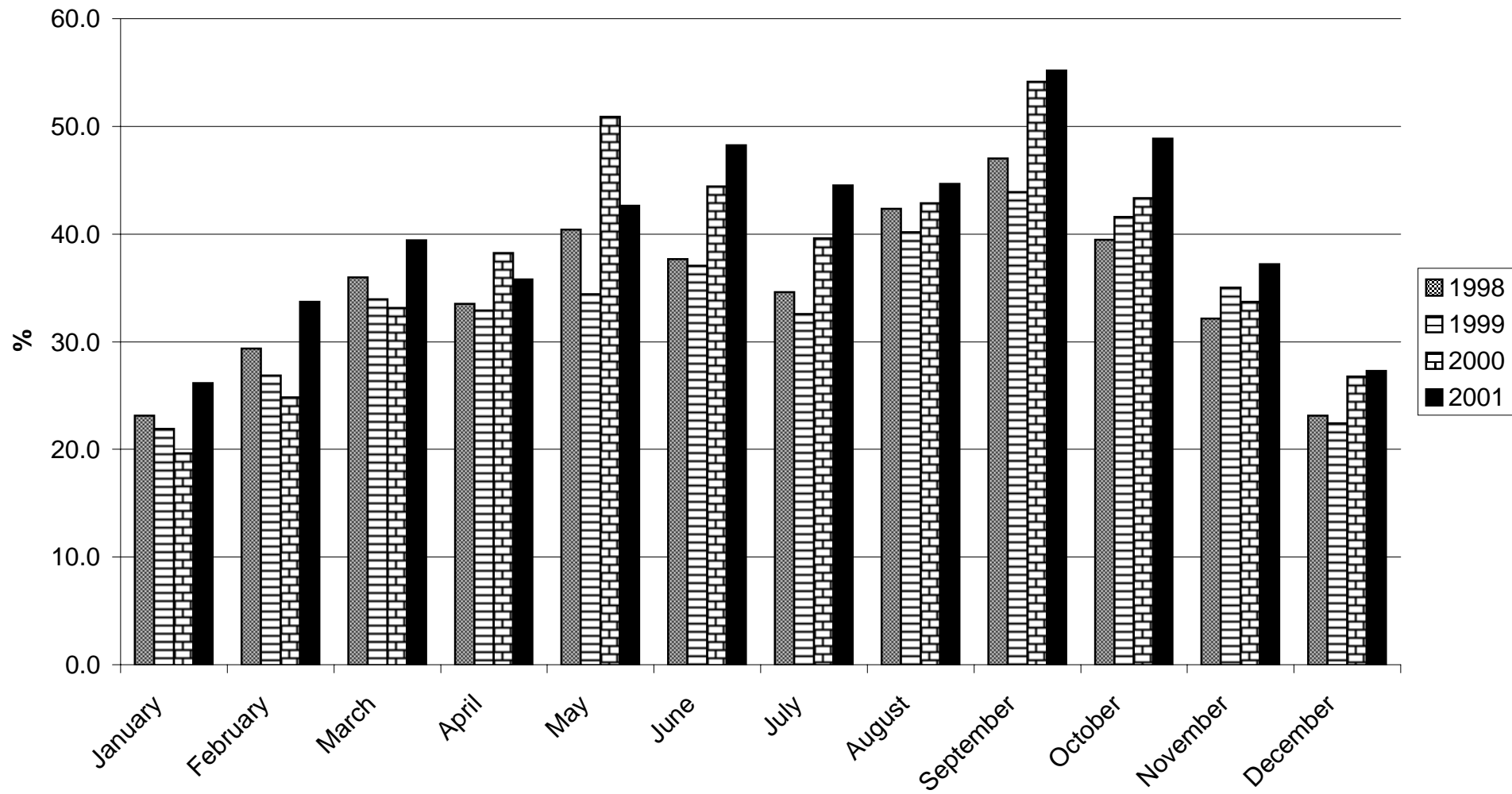


Table 4(a): Number of Arrivals by Month, all hotels 1975 -1981

MONTH	ALL ARRIVALS (00's)							TOURIST ARRIVALS (00's)							
	1975	1976	1977	1978	1979	1980	1981	1974	1975	1976	1977	1978	1979	1980	1981
JANUARY	28	21	16	18	21	27	20	22	22	17	10	13	16	23	16
FEBRUARY	31	26	25	24	38	31	26	28	27	19	18	19	23	26	21
MARCH	39	34	28	31	40	37	33	32	33	28	20	22	27	31	26
APRIL	28	26	25	32	28	35	29	26	26	22	19	25	23	29	24
MAY	38	39	28	36	39	43	29	28	33	34	25	29	34	32	23
JUNE	39	29	30	41	41	44	28	32	32	27	26	35	34	27	23
JULY	50	35	31	35	45	34	31	33	45	31	27	29	39	29	21
AUGUST	57	36	34	38	46	39	#	35	53	31	28	30	37	34	23
SEPTEMBER	47	31	26	39	47	38	33	31	43	27	23	33	39	34	25
OCTOBER	46	30	26	40	46	37	31	37	41	24	24	33	38	31	25
NOVEMBER	33	23	25	35	32	26	23	28	29	17	17	27	26	20	18
DECEMBER	23	20	20	23	23	22	20	21	18	15	16	17	18	15	16
TOTAL	459	350	314	392	446	413	334	353	402	292	253	312	354	331	261

Note: Yearly totals have been rounded off and need not necessarily equal the sum of the rounded-off monthly figures.

Table 4(b): Number of Arrivals by Month, all hotels 1982 -1988

MONTH	ALL ARRIVALS (00's)							TOURIST ARRIVALS (00's)						
	1982	1983	1984	1985	1986	1987	1988	1982	1983	1984	1985	1986	1987	1988
JANUARY	16	16	18	26	31	41	46	11	11	11	10	24	37	32
FEBRUARY	25	23	25	45	40	46	47	18	16	13	27	29	35	36
MARCH	37	26	26	49	46	63	63	24	18	17	36	38	50	47
APRIL	34	30	29	46	44	62	61	23	19	16	33	36	50	48
MAY	33	34	38	46	57	58	60	26	21	20	37	40	38	46
JUNE	32	27	28	46	51	51	58	23	20	21	35	39	35	40
JULY	29	31	33	52	45	44	54	23	20	21	38	34	36	36
AUGUST	34	32	34	54	52	51	53	22	21	23	43	40	41	36
SEPTEMBER	33	36	35	54	55	62	58	23	25	26	41	44	48	38
OCTOBER	31	30	40	51	50	63	49	20	19	27	35	42	48	36
NOVEMBER	23	25	30	46	49	60	58	17	16	20	35	43	48	36
DECEMBER	22	21	21	36	46	52	42	15	14	12	24	29	34	26
TOTAL	349	331	357	551	566	653	649	245	220	227	394	438	500	457

Note: Yearly totals have been rounded off and need not necessarily equal the sum of the rounded-off monthly figures.

Table 4(c): Number of Arrivals by Month, all hotels 1989 -1995

MONTH	ALL ARRIVALS (00's)							TOURIST ARRIVALS (00's)						
	1989	1990	1991	1992	1993	1994	1995	1989	1990	1991	1992	1993	1994	1995
JANUARY	34	34	34	23	19	25	20	24	20	19	16	15	17	16
FEBRUARY	43	41	34	30	24	24	28	35	24	19	22	15	17	22
MARCH	52	79	39	34	29	31	34	41	30	23	27	21	21	24
APRIL	53	84	36	36	30	31	40	41	34	21	28	21	21	28
MAY	46	60	42	40	38	39	38	36	28	24	29	26	24	26
JUNE	50	53	32	41	35	33	39	42	23	21	28	24	23	27
JULY	66	63	39	38	33	34	46	39	31	25	26	22	24	33
AUGUST	59	46	35	36	33	33	44	41	25	24	29	25	23	31
SEPTEMBER	74	58	43	41	44	43	57	44	31	24	26	29	29	41
OCTOBER	77	50	47	39	45	39	41	53	26	25	27	29	27	32
NOVEMBER	67	41	26	28	35	25	31	44	21	16	20	23	17	25
DECEMBER	58	39	25	24	25	22	32	35	20	17	19	19	16	25
TOTAL	679	648	432	410	391	379	451	475	313	260	299	270	259	331

Note: Yearly totals have been rounded off and need not necessarily equal the sum of the rounded-off monthly figures.

Table 4(d): Number of Arrivals by Month, all hotels 1996 - 2001

MONTH	ALL ARRIVALS (00's)						TOURIST ARRIVALS (00's)					
	1996	1997	1998	1999	2000	2001	1996	1997	1999	1999	2000	2001
JANUARY	28	24	30	26	22	31	20	15	16	17	15	23
FEBRUARY	34	32	28	26	28	33	25	19	17	17	19	24
MARCH	40	33	31	36	39	45	27	19	21	23	28	32
APRIL	41	39	34	37	42	43	30	22	23	23	30	31
MAY	42	48	38	36	48	50	26	28	25	25	35	35
JUNE	41	47	35	38	48	50	26	27	24	25	36	34
JULY	38	43	34	34	40	50	27	28	23	22	29	37
AUGUST	39	55	42	43	46	53	30	33	30	28	35	41
SEPTEMBER	47	54	40	42	56	54	30	31	30	27	41	41
OCTOBER	43	39	42	43	48	51	31	28	29	30	36	38
NOVEMBER	33	38	36	37	39	43	22	20	24	23	29	34
DECEMBER	35	32	28	24	33	35	25	19	18	17	24	25
TOTAL	461	484	416	421	489	538	319	289	279	277	359	394

Note: Yearly totals have been rounded off and need not necessarily equal the sum of the rounded-off monthly figures.

ALL ARRIVALS AT HOTELS, 1996 - 2001

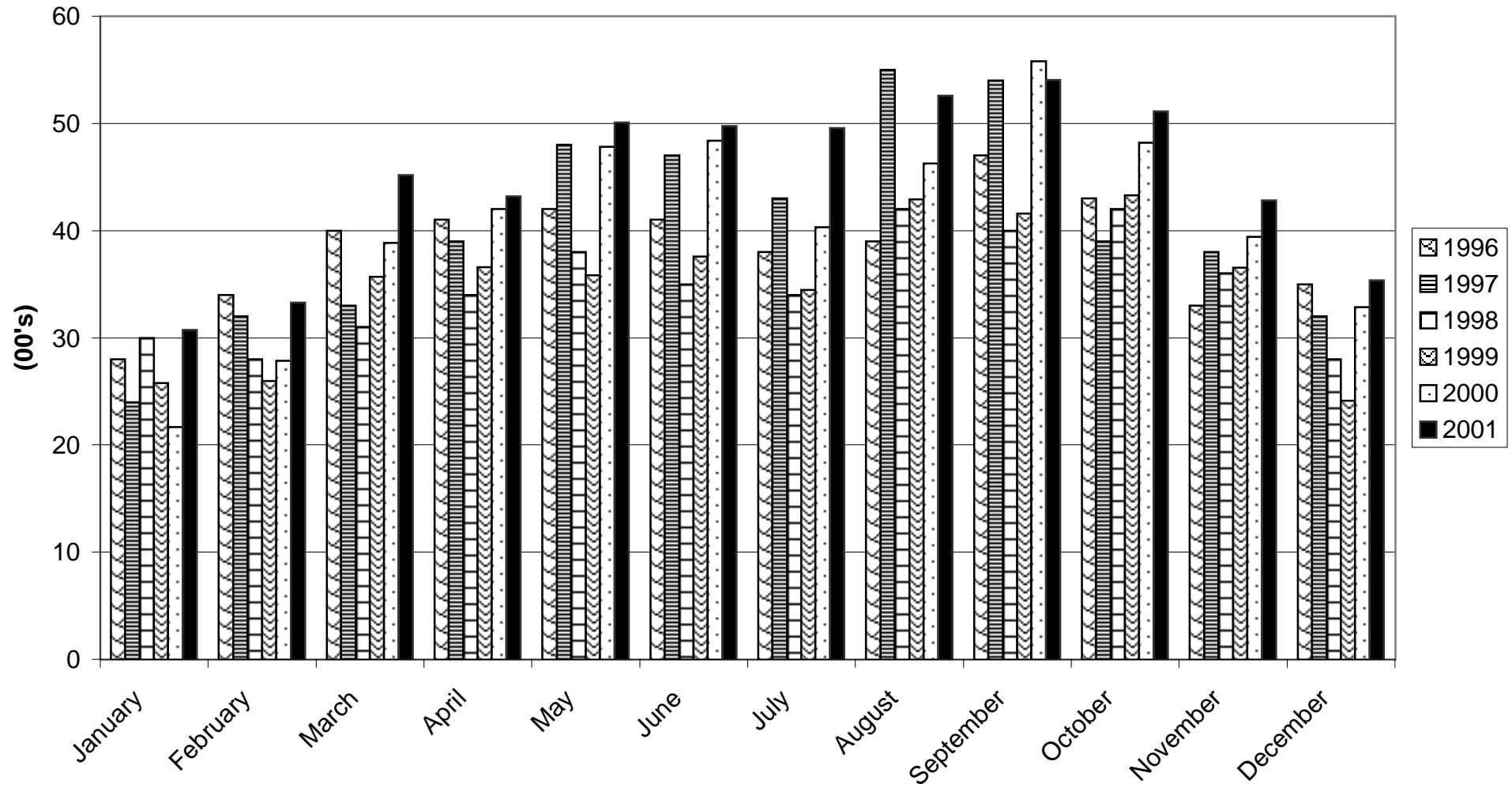


Table 5(a): Guest Nights Sold/Offered, % Sleeper Occupancy, all hotels 1975 -1978

ALL ARRIVALS

MONTH	GNS (000's)				GNO (000's)				% SLEEPER OCCUPANCY			
	1975	1976	1977	1978	1975	1976	1977	1978	1975	1976	1977	1978
JANUARY	15	12	10	9	47	50	44	45	32.2	23.4	23.0	19.3
FEBRUARY	18	14	17	12	43	47	40	40	43.4	29.0	41.3	30.2
MARCH	22	20	18	16	49	50	46	45	44.1	39.2	39.0	35.0
APRIL	21	17	15	21	48	47	44	44	43.8	35.6	33.9	46.4
MAY	30	21	17	22	51	48	45	46	59.7	45.1	37.6	48.4
JUNE	33	26	21	32	50	46	44	45	67.0	56.9	47.6	71.2
JULY	37	29	22	30	49	48	43	46	76.4	61.4	51.0	65.8
AUGUST	42	33	26	30	51	48	43	45	81.4	69.5	60.0	66.8
SEPTEMBER	33	25	21	30	50	44	44	46	66.8	56.1	48.8	64.3
OCTOBER	29	24	19	25	50	48	46	47	57.6	49.2	40.9	53.6
NOVEMBER	16	13	12	17	47	42	44	44	33.4	30.8	27.2	39.4
DECEMBER	11	11	11	13	48	45	45	45	24.1	24.8	24.0	29.1
TOTAL	307	245	209	257	583	563	528	538	53.0	43.5	39.4	47.8

Note: Yearly totals have been rounded off and need not necessarily equal the sum of the rounded-off monthly figures.

Table 5(b): Guest Nights Sold/Offered, % Sleeper Occupancy, all hotels 1979 -1982

ALL ARRIVALS

MONTH	GNS (000's)				GNO (000's)				% SLEEPER OCCUPANCY			
	1979	1980	1981	1982	1979	1980	1981	1982	1979	1980	1981	1982
JANUARY	10	12	10	9	45	45	44	43	23.3	26.6	23.2	20.2
FEBRUARY	17	14	13	14	42	42	40	40	40.3	32.9	31.9	35.2
MARCH	20	21	17	19	47	46	44	44	43.1	46.4	38.8	42.4
APRIL	17	23	18	22	46	47	44	44	38.0	48.5	40.3	50.5
MAY	24	22	16	23	47	48	44	45	50.9	46.9	37.1	50.0
JUNE	33	28	18	24	47	47	42	45	69.2	60.2	42.0	54.7
JULY	35	26	17	24	48	48	42	46	71.8	53.1	40.2	51.9
AUGUST	37	31	19	24	48	47	43	45	76.9	64.9	43.5	52.0
SEPTEMBER	39	30	19	22	47	47	43	43	82.2	63.0	44.1	51.7
OCTOBER	34	24	18	19	47	46	47	45	73.2	52.2	39.1	42.6
NOVEMBER	18	14	13	12	47	44	42	44	38.8	31.8	30.1	27.9
DECEMBER	12	11	10	11	48	44	44	45	24.7	26.2	23.6	25.6
TOTAL	296	256	188	223	559	551	519	529	53.0	46.5	36.2	42.2

Note: Yearly totals have been rounded off and need not necessarily equal the sum of the rounded-off monthly figures.

Table 5(c): Guest Nights Sold/Offered, % Sleeper Occupancy, all hotels 1983 -1986

ALL ARRIVALS

MONTH	GNS (000's)				GNO (000's)				% SLEEPER OCCUPANCY			
	1983	1984	1985	1986	1983	1984	1985	1986	1983	1984	1985	1986
JANUARY	9	9	11	13	45	46	45	43	19.0	20.7	24.3	30.1
FEBRUARY	11	13	18	15	41	43	41	38	27.7	30.0	42.7	39.0
MARCH	16	15	25	21	46	47	46	43	34.8	32.5	54.0	48.7
APRIL	16	18	25	18	45	45	45	42	35.9	39.9	56.8	42.0
MAY	20	23	23	25	46	46	47	45	43.2	50.5	50.3	57.2
JUNE	23	23	31	29	45	45	45	43	49.7	50.8	69.4	67.9
JULY	20	22	28	23	47	45	48	44	42.3	50.1	58.0	51.8
AUGUST	25	25	32	27	47	47	48	46	54.0	53.0	67.7	59.7
SEPTEMBER	25	27	32	29	46	44	46	44	54.6	61.0	68.2	64.8
OCTOBER	21	25	27	26	47	46	48	45	43.7	53.2	55.6	59.3
NOVEMBER	13	15	17	23	45	45	46	43	30.2	32.3	36.9	54.1
DECEMBER	11	11	13	17	46	47	47	44	24.4	22.9	27.3	38.5
TOTAL	210	226	282	266	546	546	552	520	38.4	41.3	51.0	51.3

Note: Yearly totals have been rounded off and need not necessarily equal the sum of the rounded-off monthly figures.

Table 5(d): Guest Nights Sold/Offered, % Sleeper Occupancy, all hotels 1987 -1990

ALL ARRIVALS

MONTH	GNS (000's)				GNO (000's)				% SLEEPER OCCUPANCY			
	1987	1988	1989	1990	1987	1988	1989	1990	1987	1988	1989	1990
JANUARY	19	16	15	11	46	46	42	37	42.1	35.8	35.2	31.2
FEBRUARY	18	19	18	14	42	44	40	37	43.9	42.6	46.0	37.3
MARCH	26	26	22	19	46	48	42	42	57.5	53.6	52.0	45.3
APRIL	24	26	23	23	43	45	42	41	55.6	57.1	54.8	55.4
MAY	25	26	19	21	45	47	44	42	55.7	55.1	41.9	50.4
JUNE	22	29	19	15	44	47	43	39	49.1	61.6	43.9	37.3
JULY	20	27	20	18	45	48	43	42	44.5	55.8	46.8	43.8
AUGUST	26	24	19	15	45	48	43	41	57.7	50.4	45.1	35.2
SEPTEMBER	29	26	19	18	45	44	42	41	65.6	60.4	46.0	44.4
OCTOBER	26	26	19	18	44	46	40	40	58.8	56.4	46.2	44.5
NOVEMBER	24	22	14	12	44	43	38	40	54.4	51.4	38.2	30.2
DECEMBER	20	19	13	13	46	45	42	39	42.5	42.6	31.2	32.4
TOTAL	279	286	220	197	535	551	501	481	52.3	52.0	44.0	40.8

Note: Yearly totals have been rounded off and need not necessarily equal the sum of the rounded-off monthly figures.

Table 5(e): Guest Nights Sold/Offered, % Sleeper Occupancy, all hotels 1991 -1994

ALL ARRIVALS

MONTH	GNS (000's)				GNO (000's)				% SLEEPER OCCUPANCY			
	1991	1992	1993	1994	1991	1992	1993	1994	1991	1992	1993	1994
JANUARY	12	9	7	10	40	42	33	34	29.4	20.6	21.5	29.4
FEBRUARY	13	9	9	9	37	41	30	30	34.5	22.8	30.1	31.3
MARCH	17	14	12	12	44	46	33	33	37.5	29.6	36.2	37.2
APRIL	14	14	12	12	41	42	32	31	34.0	32.6	38.3	39.2
MAY	17	15	16	15	41	43	34	35	40.2	35.6	45.6	42.5
JUNE	16	16	15	14	44	47	32	33	35.8	34.8	48.0	40.6
JULY	16	16	14	15	43	45	32	35	37.9	35.2	41.8	42.4
AUGUST	16	14	14	13	40	44	33	35	41.2	32.2	44.0	37.0
SEPTEMBER	17	16	18	16	44	41	32	33	39.2	39.7	56.2	48.9
OCTOBER	18	15	17	15	43	42	34	35	42.5	34.6	50.9	43.9
NOVEMBER	13	10	13	9	41	32	32	33	31.1	32.6	39.4	27.8
DECEMBER	10	9	10	9	45	33	33	34	22.4	27.0	29.6	25.2
TOTAL	178	157	157	149	502	497	391	401	35.5	31.6	40.2	37.2

Note: Yearly totals have been rounded off and need not necessarily equal the sum of the rounded-off monthly figures.

Table 5(f): Guest Nights Sold/Offered, % Sleeper Occupancy, all hotels 1995 -1998

ALL ARRIVALS

MONTH	GNS (000's)				GNO (000's)				% SLEEPER OCCUPANCY			
	1995	1996	1997	1998	1995	1996	1997	1998	1995	1996	1997	1998
JANUARY	6	8	8	7	32	32	31	30	19.0	24.9	24.1	24.8
FEBRUARY	10	9	10	9	28	30	29	25	34.9	29.9	34.1	35.4
MARCH	10	12	10	11	31	32	31	28	33.4	36.3	33.0	38.8
APRIL	13	12	11	11	25	31	31	26	49.5	39.1	36.3	42.4
MAY	13	14	14	12	31	32	32	27	41.4	43.0	45.0	45.6
JUNE	14	13	13	13	30	30	30	28	46.3	37.2	44.4	45.9
JULY	15	12	14	13	32	31	31	29	48.2	39.0	44.1	43.9
AUGUST	15	13	16	16	32	31	31	29	46.2	42.3	51.3	54.4
SEPTEMBER	18	16	16	17	31	31	31	28	58.0	51.9	50.7	59.8
OCTOBER	13	13	14	15	32	31	31	29	41.1	42.8	44.1	50.2
NOVEMBER	9	10	10	12	31	30	31	28	28.1	31.3	31.7	43.8
DECEMBER	9	9	9	9	32	31	31	29	26.7	29.0	28.2	32.2
TOTAL	144	141	144	145	369	372	370	335	39.2	37.8	39.0	43.1

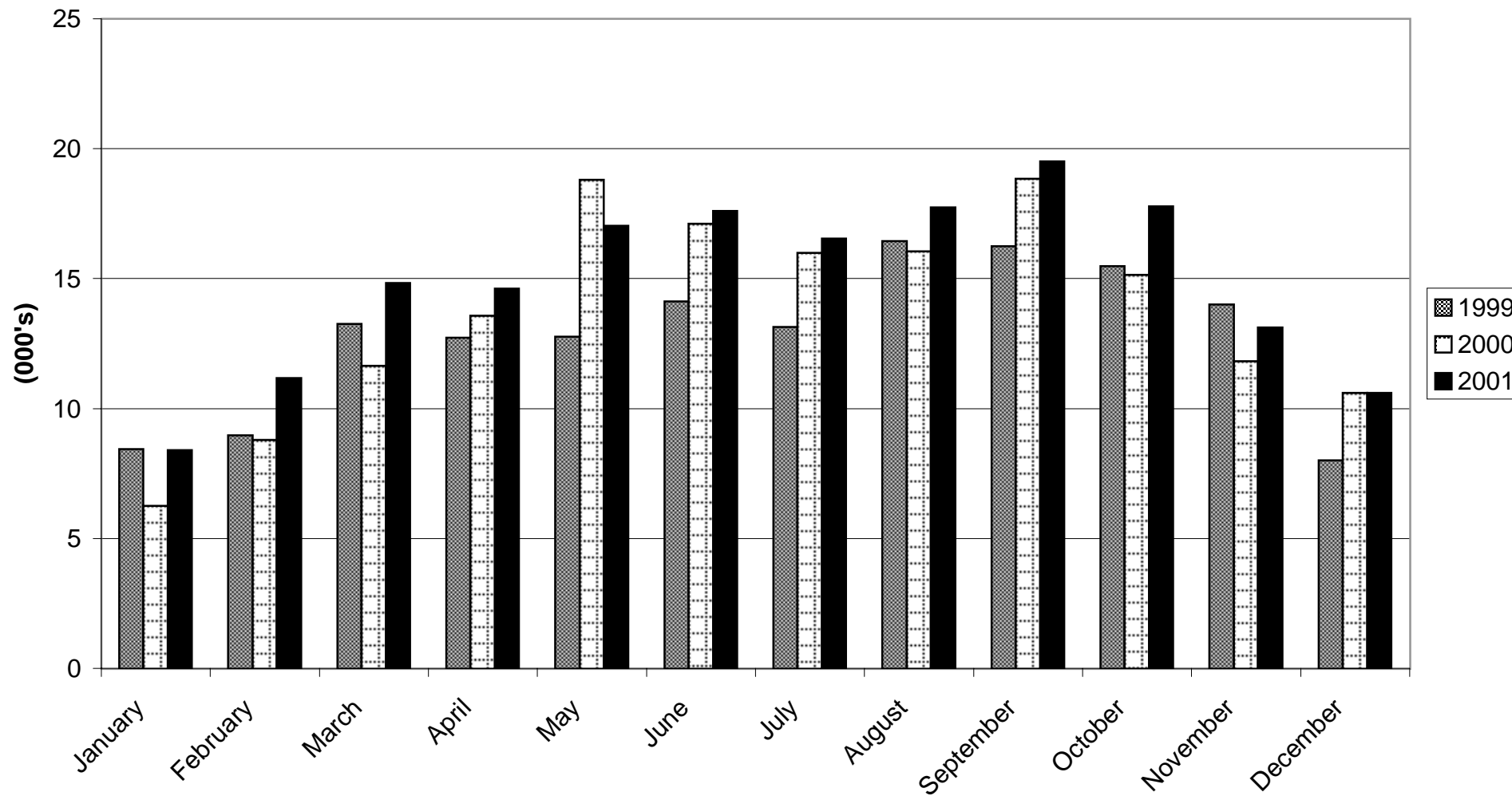
Note: Yearly totals have been rounded off and need not necessarily equal the sum of the rounded-off monthly figures.

Table 5(g): ALL ARRIVALS - Guest Nights Sold/Offered, % Sleeper Occupancy, all hotels 1999 - 2001

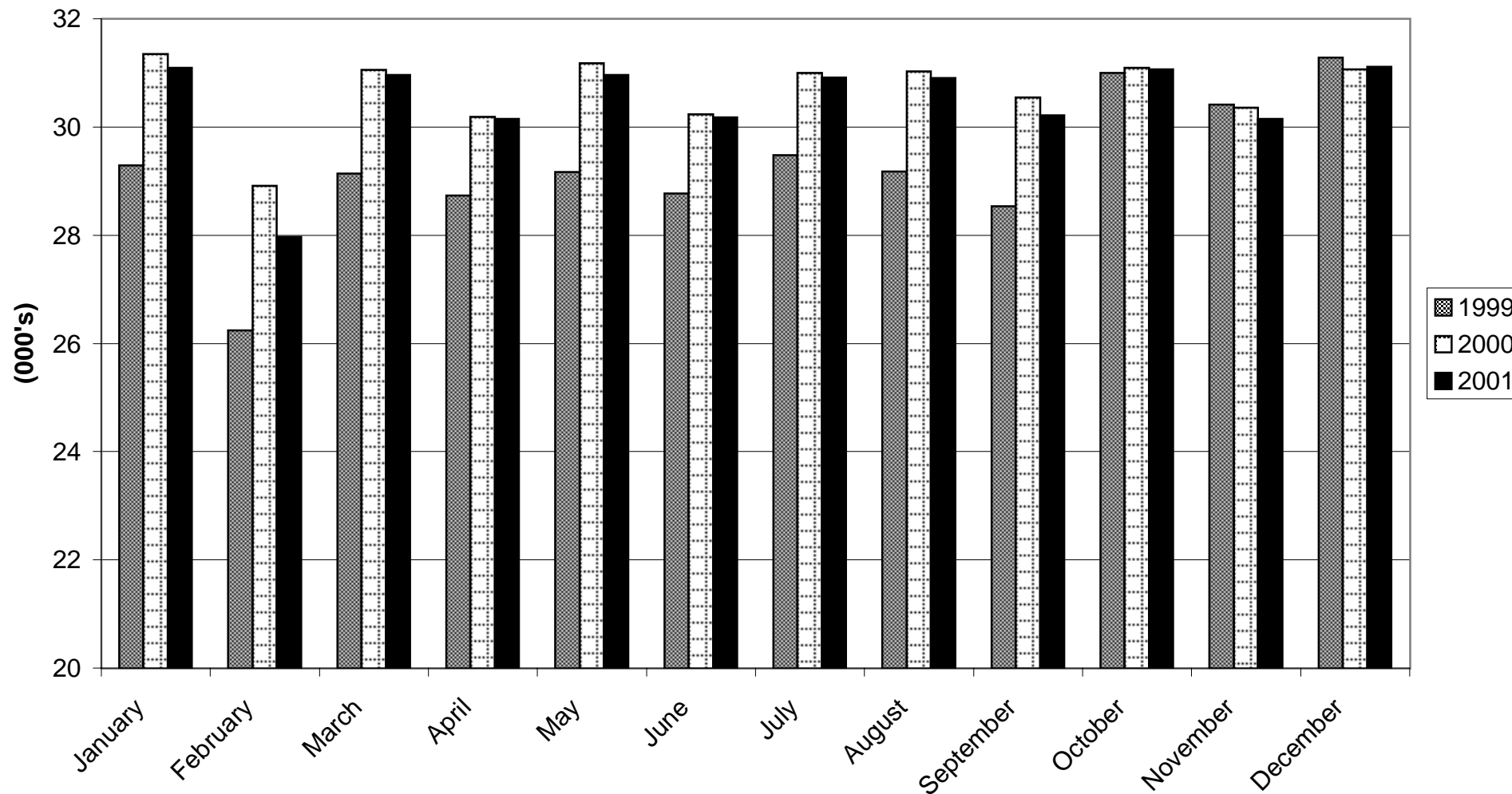
MONTH	GUEST NIGHTS SOLD (000's)			GUEST NIGHTS OFFERED (000's)			% SLEEPER OCCUPANCY		
	1999	2000	2001	1999	2000	2001	1999	2000	2001
JANUARY	8	6	8	29	31	31	28.8	20.0	27.0
FEBRUARY	9	9	11	26	29	28	34.2	30.4	40.0
MARCH	13	12	15	29	31	31	45.5	37.5	47.9
APRIL	13	14	15	29	30	30	44.3	45.0	48.4
MAY	13	19	17	29	31	31	43.7	60.3	55.0
JUNE	14	17	18	29	30	30	49.1	56.6	58.3
JULY	13	16	17	29	31	31	44.5	50.2	53.5
AUGUST	16	16	18	29	31	31	56.3	51.8	57.4
SEPTEMBER	16	19	20	29	31	30	56.9	61.7	64.6
OCTOBER	15	15	18	31	31	31	50.0	48.7	57.3
NOVEMBER	14	12	13	30	30	30	46.0	38.9	43.5
DECEMBER	8	11	11	31	31	31	25.6	34.1	34.1
TOTAL	154	164	179	351	368	366	43.8	44.6	48.9

Note: Yearly totals have been rounded off and need not necessarily equal the sum of the rounded-off monthly figures.

GUEST NIGHTS SOLD, ALL ARRIVALS, 1999 - 2001



GUEST NIGHTS OFFERED, ALL ARRIVALS, 1999 - 2001



% SLEEPER OCCUPANCY, ALL ARRIVALS, 1999 - 2001

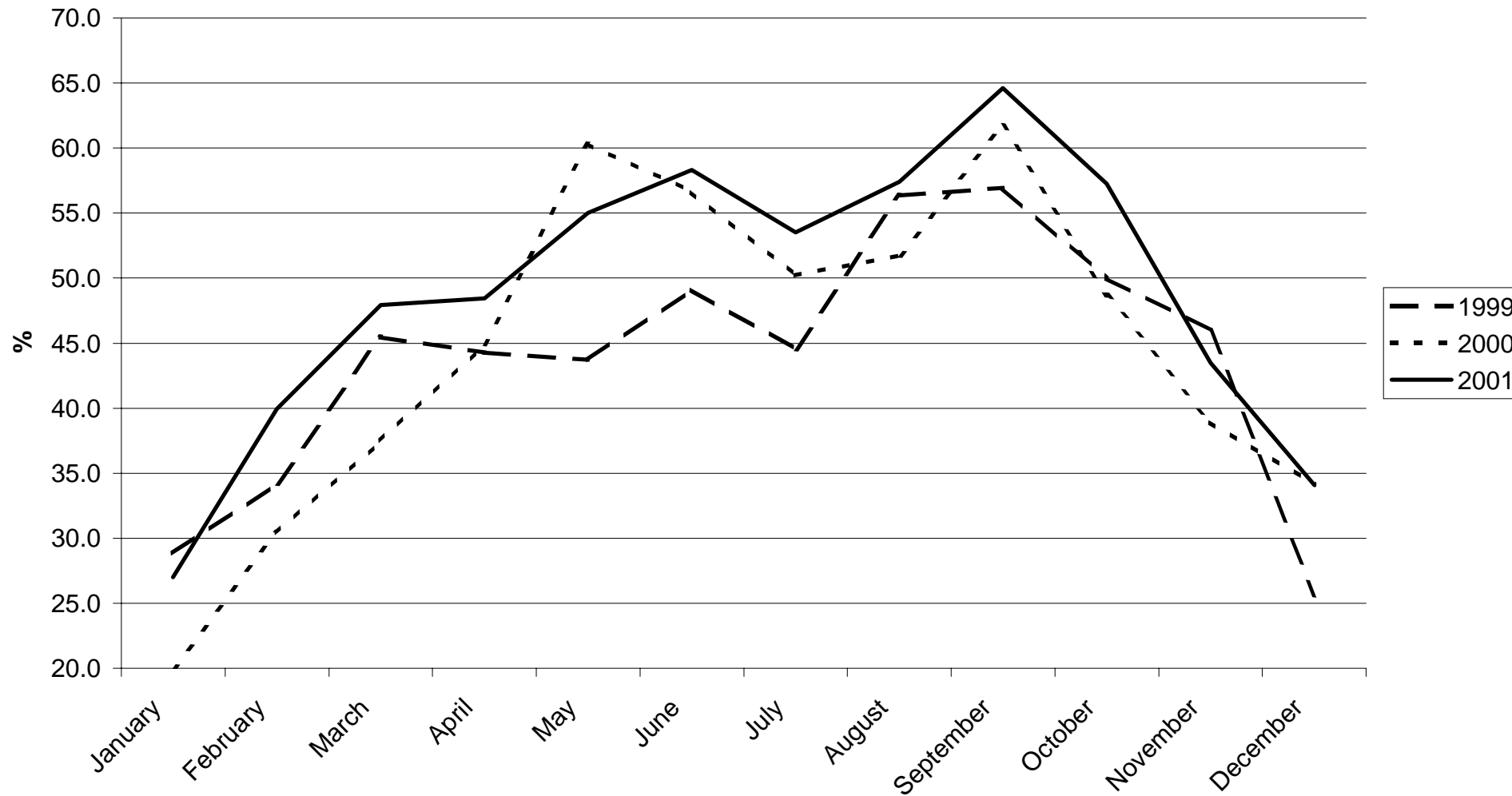


Table 6(a): Guest Nights Sold/Offered, % Sleeper Occupancy, all hotels 1975 -1978

TOURIST ARRIVALS

MONTH	GNS (000's)				GNO (000's)				% SLEEPER OCCUPANCY			
	1975	1976	1977	1978	1975	1976	1977	1978	1975	1976	1977	1978
JANUARY	12	9	6	6	47	50	44	45	26.2	17.9	13.2	14.4
FEBRUARY	15	10	13	10	43	47	40	40	36.4	21.7	31.0	24.1
MARCH	18	17	15	13	49	50	46	45	37.0	33.2	32.1	28.7
APRIL	18	15	12	18	48	47	44	44	37.1	31.7	27.7	39.5
MAY	24	19	16	19	51	48	45	46	46.4	39.6	34.3	42.3
JUNE	26	24	19	26	50	46	44	45	52.4	52.0	44.1	58.0
JULY	33	26	20	27	49	48	43	46	67.1	55.5	45.5	59.1
AUGUST	36	31	22	27	51	48	43	45	70.1	64.0	52.0	59.6
SEPTEMBER	29	23	18	26	50	44	44	46	59.0	52.4	42.1	57.0
OCTOBER	26	21	16	22	50	48	46	47	51.7	44.7	35.2	47.6
NOVEMBER	14	11	9	15	47	42	44	44	29.3	25.3	21.4	33.9
DECEMBER	9	9	9	10	48	45	45	45	19.8	21.0	19.3	23.2
TOTAL	260	215	175	219	583	563	528	538	44.8	38.3	33.1	40.9

Note: Yearly totals have been rounded off and need not necessarily equal the sum of the rounded-off monthly figures.

Table 6(b): Guest Nights Sold/Offered, % Sleeper Occupancy, all hotels 1979 -1982

TOURIST ARRIVALS

MONTH	GNS (000's)				GNO (000's)				% SLEEPER OCCUPANCY			
	1979	1980	1981	1982	1979	1980	1981	1982	1979	1980	1981	1982
JANUARY	8	10	8	7	45	45	44	43	18.0	22.2	18.0	15.3
FEBRUARY	11	11	9	10	42	42	40	40	25.3	26.4	21.4	24.8
MARCH	14	17	13	13	47	46	44	44	30.4	36.4	30.4	30.4
APRIL	15	17	14	16	46	47	44	44	31.3	37.1	31.1	36.1
MAY	21	17	13	16	47	48	44	45	44.3	35.9	30.4	35.2
JUNE	27	22	14	19	47	47	42	45	57.4	46.3	32.7	42.2
JULY	30	23	12	19	48	48	42	46	62.7	46.7	28.5	40.5
AUGUST	30	28	15	18	48	47	43	45	63.4	59.3	34.6	40.2
SEPTEMBER	34	25	16	16	47	47	43	43	72.3	53.6	37.2	43.4
OCTOBER	27	21	15	14	47	46	47	45	57.4	45.7	32.1	29.9
NOVEMBER	13	11	10	9	47	44	42	44	27.1	25.1	24.4	21.4
DECEMBER	9	8	8	8	48	44	44	45	19.5	19.2	18.0	18.3
TOTAL	239	210	147	165	559	551	519	529	42.8	38.2	28.3	31.1

Note: Yearly totals have been rounded off and need not necessarily equal the sum of the rounded-off monthly figures.

Table 6(c): Guest Nights Sold/Offered, % Sleeper Occupancy, all hotels 1983 -1986

TOURIST ARRIVALS

MONTH	GNS (000's)				GNO (000's)				% SLEEPER OCCUPANCY			
	1983	1984	1985	1986	1983	1984	1985	1986	1983	1984	1985	1986
JANUARY	7	7	8	10	45	46	45	43	15.5	15.0	16.5	22.1
FEBRUARY	8	8	14	12	41	43	41	38	20.7	19.4	33.8	31.0
MARCH	11	12	19	16	46	47	46	43	24.7	24.6	42.2	38.1
APRIL	10	13	18	13	45	45	45	42	23.4	28.4	40.2	30.7
MAY	14	15	18	19	46	46	47	45	29.4	33.2	39.4	41.9
JUNE	18	18	24	23	45	45	45	43	38.7	40.6	52.9	52.8
JULY	16	18	23	18	47	45	48	44	33.6	40.0	47.5	41.0
AUGUST	19	20	27	21	47	47	48	46	41.9	42.0	57.0	46.3
SEPTEMBER	19	22	26	21	46	44	46	44	41.7	50.2	56.7	48.1
OCTOBER	14	19	19	20	47	46	48	45	30.5	41.0	40.2	45.3
NOVEMBER	10	11	13	18	45	45	46	43	21.2	24.6	28.4	41.7
DECEMBER	9	8	9	12	46	47	47	44	18.4	17.4	18.8	27.5
TOTAL	155	171	218	203	546	546	552	520	28.4	31.3	39.6	38.6

Note: Yearly totals have been rounded off and need not necessarily equal the sum of the rounded-off monthly figures.

Table 6(d): Guest Nights Sold/Offered, % Sleeper Occupancy, all hotels 1987 -1990

TOURIST ARRIVALS

MONTH	GNS (000's)				GNO (000's)				% SLEEPER OCCUPANCY			
	1987	1988	1989	1990	1987	1988	1989	1990	1987	1988	1989	1990
JANUARY	15	13	10	8	46	46	42	37	33.6	27.5	23.7	22.7
FEBRUARY	15	14	13	10	42	44	40	37	34.8	32.2	33.4	27.1
MARCH	21	19	15	13	46	48	42	42	46.3	39.8	36.2	31.0
APRIL	19	20	16	14	43	45	42	41	44.9	44.8	37.0	34.0
MAY	18	19	12	12	45	47	44	42	38.6	40.3	27.9	29.4
JUNE	16	20	14	10	44	47	43	39	36.9	43.5	32.7	24.3
JULY	15	19	13	12	45	48	43	42	34.3	39.2	30.6	27.4
AUGUST	19	17	13	10	45	48	43	41	42.5	34.5	30.6	23.1
SEPTEMBER	22	17	12	12	45	44	42	41	49.7	37.8	29.8	30.0
OCTOBER	21	17	14	11	44	46	40	40	46.4	37.9	34.0	27.8
NOVEMBER	18	14	11	8	44	43	38	40	41.8	32.5	27.6	19.5
DECEMBER	14	11	9	8	46	45	42	39	29.8	24.3	21.7	20.9
TOTAL	213	200	152	128	535	551	501	481	40.0	36.2	30.4	26.5

Note: Yearly totals have been rounded off and need not necessarily equal the sum of the rounded-off monthly figures.

Table 6(e): Guest Nights Sold/Offered, % Sleeper Occupancy, all hotels 1991 -1994

TOURIST ARRIVALS

MONTH	GNS (000's)				GNO (000's)				% SLEEPER OCCUPANCY			
	1991	1992	1993	1994	1991	1992	1993	1994	1991	1992	1993	1994
JANUARY	7	5	4	7	40	42	33	34	17.7	12.9	12.4	19.5
FEBRUARY	8	6	5	6	37	41	30	30	20.2	15.4	17.7	21.1
MARCH	8	9	8	8	44	46	33	33	19.1	19.3	23.0	24.5
APRIL	9	9	8	9	41	42	32	31	21.9	21.7	25.2	27.1
MAY	10	9	10	10	41	43	34	35	23.3	20.7	28.5	28.5
JUNE	8	10	10	9	44	47	32	33	19.4	22.0	32.7	28.3
JULY	10	10	8	10	43	45	32	35	23.2	21.3	26.2	28.7
AUGUST	8	10	10	8	40	44	33	35	21.3	22.0	30.5	25.6
SEPTEMBER	8	9	12	12	44	41	32	33	18.2	22.7	36.8	35.2
OCTOBER	10	9	11	11	43	42	34	35	23.3	20.8	33.2	30.4
NOVEMBER	7	6	9	7	41	32	32	33	16.4	20.1	27.8	20.6
DECEMBER	6	6	7	6	45	33	33	34	12.9	17.5	21.8	18.9
TOTAL	99	98	103	103	502	497	391	401	19.7	19.8	26.4	25.8

Note: Yearly totals have been rounded off and need not necessarily equal the sum of the rounded-off monthly figures.

Table 6(f): Guest Nights Sold/Offered, % Sleeper Occupancy, all hotels 1995 -1998

TOURIST ARRIVALS

MONTH	GNS (000's)				GNO (000's)				% SLEEPER OCCUPANCY			
	1995	1996	1997	1998	1995	1996	1997	1998	1995	1996	1997	1998
JANUARY	5	5	5	4	32	32	31	30	15.1	16.4	15.2	14.4
FEBRUARY	7	7	6	5	28	30	29	25	25.8	22.8	22.3	21.4
MARCH	8	9	7	7	31	32	31	28	26.4	26.7	21.3	25.8
APRIL	10	10	7	7	25	31	31	26	38.1	30.9	23.9	28.8
MAY	9	10	10	8	31	32	32	27	30.8	30.9	29.9	30.6
JUNE	11	9	9	9	30	30	30	28	37.2	30.5	28.9	30.5
JULY	11	9	9	8	32	31	31	29	36.2	29.3	28.6	28.4
AUGUST	11	10	11	10	32	31	31	29	34.8	32.0	34.5	36.5
SEPTEMBER	14	10	11	12	31	31	31	28	45.6	34.3	34.8	41.5
OCTOBER	11	10	9	10	32	31	31	29	34.1	30.9	28.3	34.6
NOVEMBER	7	7	6	8	31	30	31	28	23.8	21.5	20.9	27.1
DECEMBER	7	6	6	6	32	31	31	29	21.8	20.7	18.9	19.5
TOTAL	113	101	95	95	369	372	370	335	30.7	27.2	25.6	28.2

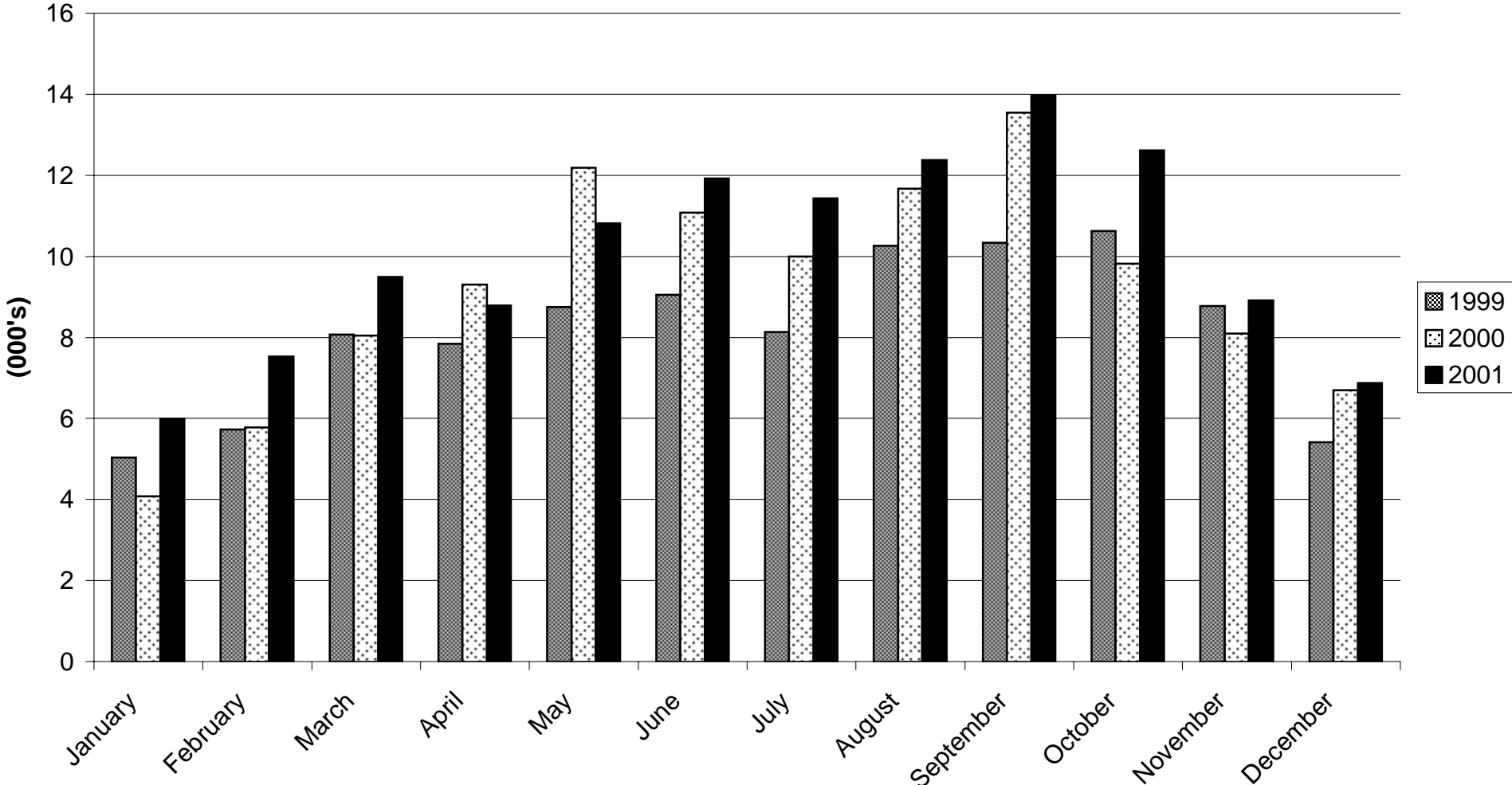
Note: Yearly totals have been rounded off and need not necessarily equal the sum of the rounded-off monthly figures.

Table 6(g): TOURIST ARRIVALS - Guest Nights Sold/Offered, % Sleeper Occupancy, all hotels 1999 - 2001

MONTH	GUEST NIGHTS SOLD (000's)			GUEST NIGHTS OFFERED (000's)			% SLEEPER OCCUPANCY		
	1999	2000	2001	1999	2000	2001	1999	2000	2001
JANUARY	5	4	6	29	31	31	17.2	13.0	19.3
FEBRUARY	6	6	8	26	29	28	21.8	20.0	26.9
MARCH	8	8	9	29	31	31	27.7	25.9	30.7
APRIL	8	9	9	29	30	30	27.3	30.8	29.1
MAY	9	12	11	29	31	31	30.0	39.1	34.9
JUNE	9	11	12	29	30	30	31.4	36.6	39.5
JULY	8	10	11	29	31	31	27.6	33.4	37.0
AUGUST	10	12	12	29	31	31	35.2	37.6	40.0
SEPTEMBER	10	14	14	29	31	30	36.2	44.3	46.3
OCTOBER	11	10	13	31	31	31	34.3	31.6	40.6
NOVEMBER	9	8	9	30	30	30	28.8	26.7	29.6
DECEMBER	5	7	7	31	31	31	17.3	21.6	22.1
TOTAL	98	111	121	351	368	366	27.9	30.1	33.0

Note: Yearly totals have been rounded off and need not necessarily equal the sum of the rounded-off monthly figures.

GUEST NIGHTS SOLD, TOURIST ARRIVALS, 1999 - 2001



% SLEEPER OCCUPANCY, TOURIST ARRIVALS, 1999- 2001

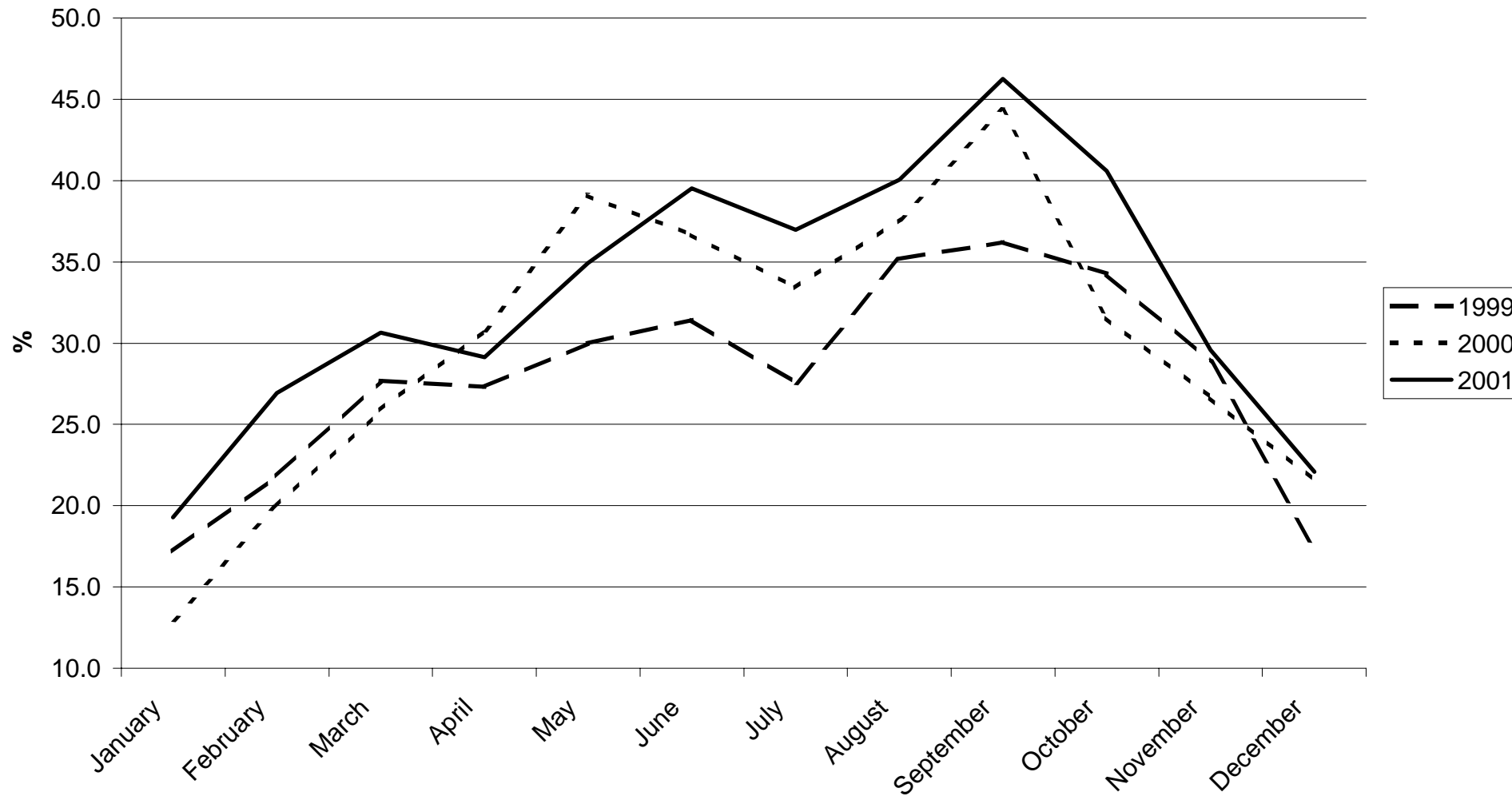


Table 7(a): Average Length of Stay per person (nights), all hotels 1975 - 2001

ALL ARRIVALS

YEAR	JAN	FEB	MAR	APR	MAY	JUN	JUL	AUG	SEP	OCT	NOV	DEC	TOTAL
1975	5.4	6.0	5.6	7.4	8.0	8.6	7.5	7.3	7.0	6.2	4.7	4.9	6.7
1976	5.5	5.3	5.8	6.6	5.5	8.9	8.4	9.2	8.1	8.0	5.6	5.5	7.0
1977	6.4	6.6	6.3	6.0	6.1	7.1	7.1	8.0	8.2	7.1	4.8	5.2	6.6
1978	4.8	5.1	5.2	6.4	6.1	7.9	8.8	8.0	7.6	6.3	5.0	5.7	6.6
1979	5.0	4.5	5.0	6.2	6.2	8.0	7.7	7.9	8.3	7.5	5.6	5.2	6.6
1980	4.5	4.5	5.8	6.5	5.2	6.5	7.6	7.9	7.8	6.4	5.2	5.3	6.2
1981	5.1	4.9	5.2	6.0	5.7	6.4	5.5	5.9	5.8	5.8	5.5	5.1	5.6
1982	5.6	5.6	5.1	6.5	6.3	7.6	8.2	6.9	6.7	6.3	5.3	5.2	6.4
1983	5.3	5.0	6.0	5.4	5.8	8.3	6.4	7.9	7.0	7.0	5.4	5.4	6.3
1984	5.3	5.2	5.9	6.2	6.1	8.0	6.8	7.4	7.7	6.1	4.9	5.1	6.3
1985	4.3	3.9	5.1	5.5	5.1	6.7	5.3	6.0	5.8	5.2	3.7	3.6	5.1
1986	4.3	3.7	4.6	4.0	4.5	5.7	5.0	5.2	5.2	5.3	4.8	3.7	4.7
1987	4.7	4.0	4.2	3.9	4.4	4.2	4.6	5.1	4.7	4.1	4.0	3.7	4.2
1988	3.6	4.1	4.1	4.3	4.3	4.9	5.0	4.6	4.6	5.2	3.8	4.6	4.4
1989	4.4	4.2	4.2	4.3	4.0	3.7	3.0	3.3	2.6	2.4	2.2	2.2	3.2
1990	3.3	3.4	2.4	2.7	3.5	2.8	2.9	3.2	3.1	3.6	3.0	3.3	3.0
1991	3.5	3.8	4.3	3.9	4.0	5.0	4.2	4.7	4.0	3.9	4.8	3.9	4.1
1992	3.7	3.1	4.0	3.8	3.9	4.0	4.2	3.9	3.9	3.7	3.7	3.7	3.8
1993	3.7	3.8	4.1	4.1	4.1	4.3	4.1	4.4	4.1	3.8	3.6	4.0	4.0
1994	4.0	4.0	4.0	4.0	3.8	4.0	4.4	3.9	3.8	3.9	3.7	3.8	3.9
1995	3.0	3.6	3.1	3.1	3.3	3.6	3.3	3.4	3.2	3.2	2.8	2.7	3.2
1996	2.8	2.6	2.9	3.0	3.2	3.3	3.2	3.4	3.4	3.1	2.9	2.6	3.1
1997	3.1	3.0	3.1	2.9	3.0	2.9	3.2	2.9	2.9	3.5	2.6	2.7	3.0
1998	2.5	3.2	3.5	3.2	3.3	3.7	3.7	3.7	4.2	3.5	3.5	3.3	3.5
1999	3.3	3.5	3.7	3.5	3.6	3.8	3.8	3.8	3.9	3.6	3.8	3.3	3.7
2000	2.9	3.2	3.0	3.2	3.9	3.5	3.9	3.5	3.4	3.1	3.0	3.2	3.4
2001	2.7	3.4	3.3	3.4	3.4	3.5	3.3	3.4	3.6	3.5	3.1	3.0	3.3

AVERAGE LENGTH OF STAY, ALL ARRIVALS, 1999 - 2001

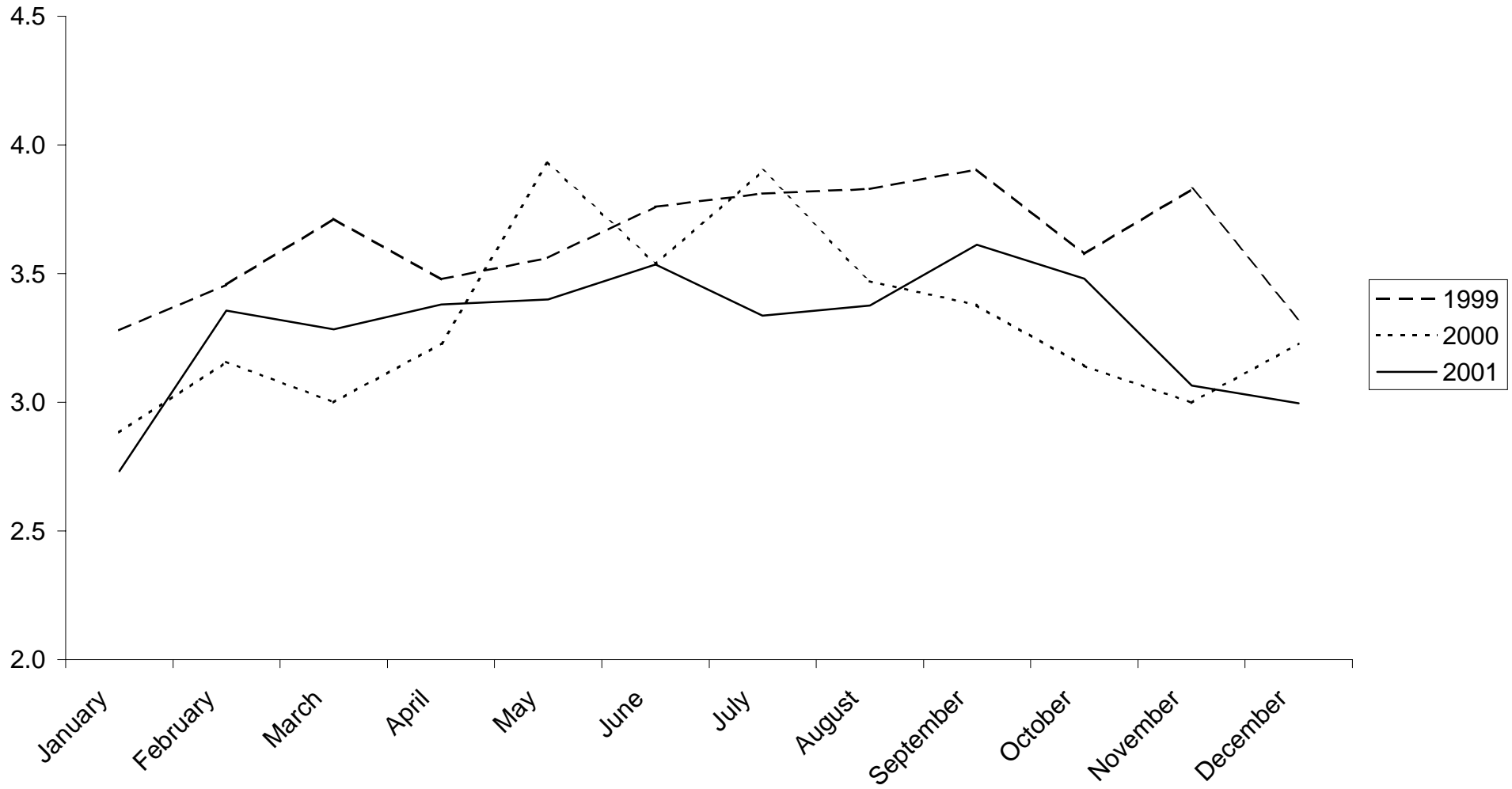


Table 7(b): Average Length of Stay per person (nights), all hotels 1975 - 2001

TOURIST ARRIVALS

YEAR	JAN	FEB	MAR	APR	MAY	JUN	JUL	AUG	SEP	OCT	NOV	DEC	TOTAL
1975	5.5	5.7	5.5	7.0	7.1	8.1	7.2	6.8	6.8	6.4	4.7	5.3	6.5
1976	5.2	5.3	5.9	6.7	5.5	9.0	8.7	10.0	8.7	8.8	6.2	6.1	7.4
1977	5.9	7.0	7.2	6.5	6.8	7.3	7.2	8.0	7.9	6.7	5.6	5.4	6.9
1978	5.0	5.1	5.8	7.1	6.7	7.6	9.4	8.8	8.1	6.8	5.4	6.2	7.1
1979	4.9	4.5	5.4	6.3	6.1	7.9	7.7	8.1	8.8	7.2	5.0	5.2	6.8
1980	4.3	4.3	5.5	6.0	5.4	8.0	7.7	8.2	7.5	6.7	5.5	5.6	6.3
1981	5.0	4.1	5.1	5.8	6.3	6.1	5.6	6.4	6.4	5.9	5.7	5.0	5.6
1982	6.1	5.4	5.5	7.0	6.1	8.2	8.0	8.2	10.1	6.7	5.6	5.4	6.7
1983	6.6	5.4	6.2	5.7	6.6	8.4	7.8	9.2	7.7	7.5	5.8	6.3	7.1
1984	6.4	6.3	6.6	8.0	7.8	8.8	8.4	8.7	8.5	7.1	5.7	6.6	7.5
1985	7.3	5.2	5.4	5.4	4.9	6.8	6.0	6.3	6.5	5.5	3.7	3.6	5.5
1986	4.0	4.2	4.3	3.7	4.7	5.8	5.2	5.3	4.8	4.9	4.2	4.1	4.6
1987	4.2	4.1	4.3	3.9	4.6	4.6	4.3	4.6	4.6	4.3	3.8	4.0	4.3
1988	3.9	3.9	4.0	4.3	4.1	5.1	5.2	4.6	4.4	4.9	3.9	4.3	4.4
1989	4.2	3.8	3.7	3.8	3.5	3.4	3.3	3.2	2.8	2.6	2.4	2.6	3.2
1990	4.1	4.3	4.4	4.1	4.3	4.3	3.7	3.8	3.9	4.2	3.7	4.1	4.1
1991	3.8	3.9	3.6	4.3	4.0	4.1	4.0	3.5	3.3	3.9	4.2	3.4	3.8
1992	3.3	2.9	3.3	3.2	3.1	3.6	3.6	3.4	3.6	3.2	3.2	3.0	3.3
1993	2.7	3.5	3.7	3.8	3.8	4.4	3.8	4.1	4.1	3.9	3.8	3.8	3.8
1994	4.0	3.8	3.9	4.0	4.0	4.1	4.2	3.9	4.0	3.9	4.0	3.9	4.0
1995	3.1	3.3	3.4	3.4	3.6	4.2	3.5	3.6	3.4	3.4	3.0	2.8	3.4
1996	2.7	2.8	3.2	3.2	3.8	3.6	3.3	3.3	3.5	3.1	2.9	2.6	3.2
1997	3.2	3.3	3.5	3.4	3.4	3.3	3.2	3.2	3.5	3.1	3.2	3.0	3.3
1998	2.8	3.1	3.4	3.2	3.4	3.5	3.5	3.5	3.9	3.5	3.3	3.0	3.4
1999	3.0	3.4	3.5	3.4	3.5	3.6	3.6	3.6	3.9	3.6	3.8	3.2	3.5
2000	2.6	3.0	2.9	3.1	3.5	3.1	3.5	3.3	3.3	2.7	2.8	2.7	3.1
2001	2.6	3.2	3.0	2.9	3.1	3.5	3.1	3.0	3.4	3.3	2.6	2.6	3.1

AVERAGE LENGTH OF STAY, TOURIST ARRIVALS, 1999 - 2001

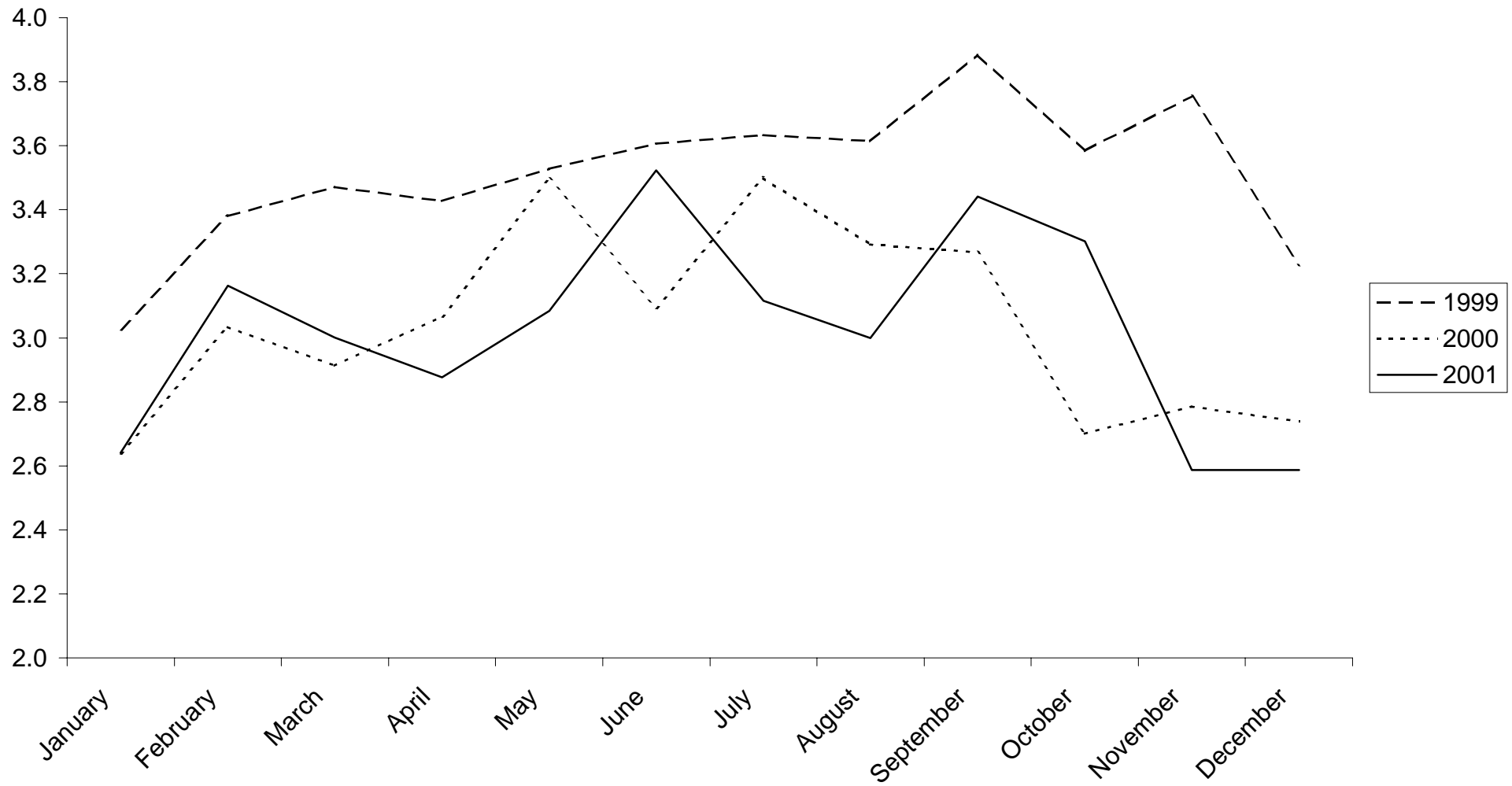
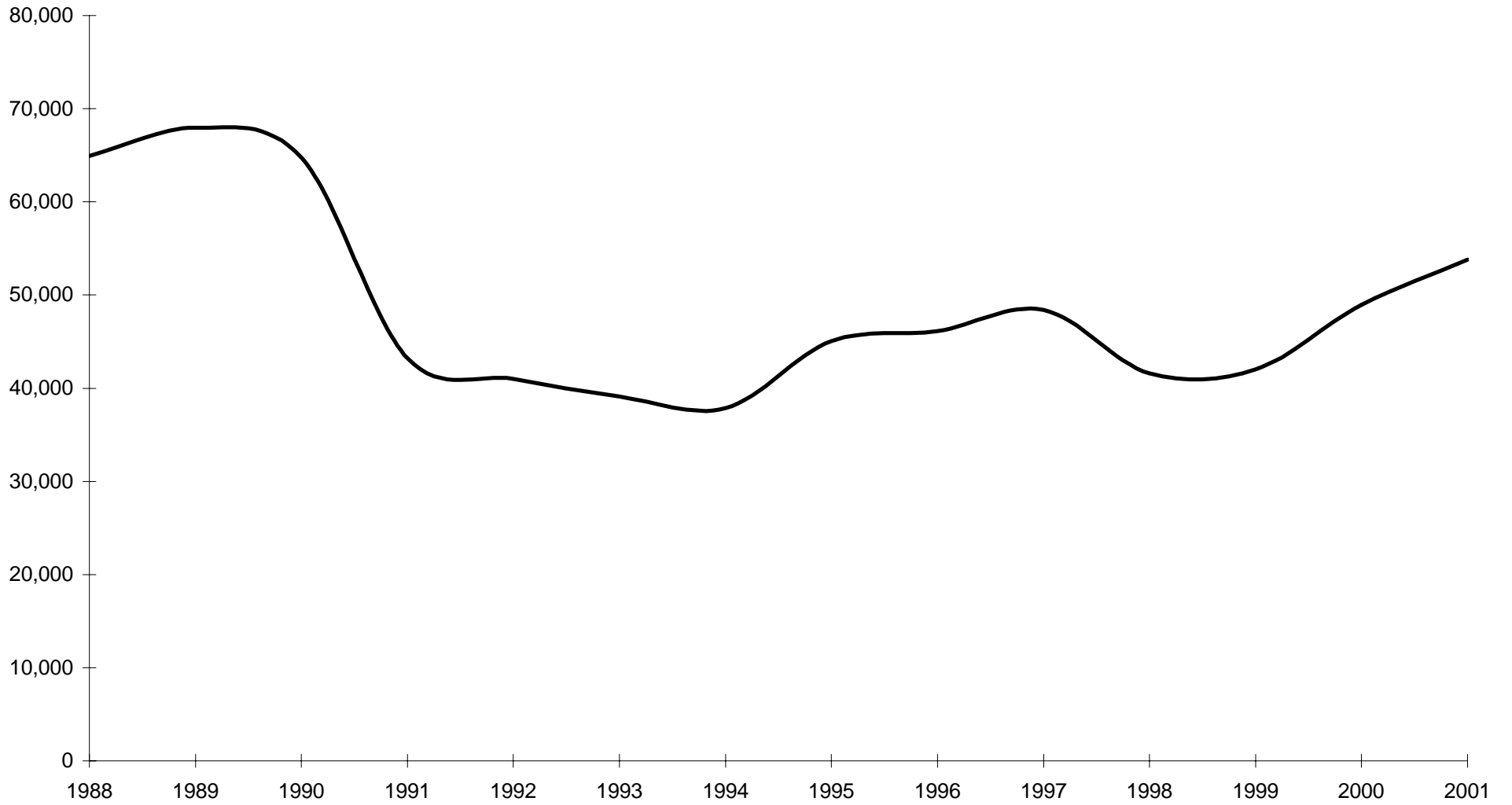


Table 8: Summary of Hotel Statistics, 1968 - 2001

YEAR	ARRIVALS IN HOTELS	SLEEPER NIGHTS	% OCCUPANCY	AV. LENGTH OF STAY (NIGHTS)
1968	55,160	211,501	57.2	3.8
1969	48,755	235,235	57.6	4.8
1970	41,774	231,785	48.8	5.5
1971	35,740	214,071	42.4	6.0
1972	33,359	234,228	51.5	7.0
1973	37,012	248,238	51.2	6.7
1974	39,758	271,225	49.5	6.8
1975	45,894	307,913	53.0	6.7
1976	34,933	244,804	43.1	7.0
1977	31,401	207,593	39.4	6.6
1978	39,102	257,295	47.8	6.6
1979	44,569	296,335	53.0	6.6
1980	41,308	255,862	46.5	6.2
1981	33,417	187,679	36.2	5.6
1982	34,896	223,429	42.2	6.4
1983	33,142	209,930	38.4	6.3
1984	35,690	225,873	41.3	6.3
1985	55,119	281,525	51.0	5.1
1986	56,525	266,223	51.3	4.6
1987	64,349	279,377	52.3	4.3
1988	64,942	286,295	52.0	4.4
1989	67,934	220,083	44.0	3.2
1990	64,793	196,516	40.8	3.0
1991	43,193	178,053	35.5	4.1
1992	40,986	156,947	31.6	3.8
1993	39,123	157,215	40.2	4.0
1994	37,851	149,292	37.2	3.9
1995	45,056	144,453	39.2	3.2
1996	46,142	140,596	37.8	3.1
1997	48,420	143,972	39.0	3.0
1998	41,616	144,538	43.1	3.5
1999	42,031	153,583	43.7	3.7
2000	48,949	164,232	44.6	3.4
2001	53,776	178,951	48.9	3.3

Source: 1968 - 1970: Gibraltar Tourist Office
1971 to date: Statistics Office

ARRIVALS AT HOTELS, 1988 - 2001



AVERAGE LENGTH OF STAY, 1988 - 2001

