

PREFACE

The Statistics (Hotel Occupancy) Order 1971 requires that the Government Statistician prepares a report and summary of the findings of the Hotel Occupancy Survey to be laid before the House of Assembly.

This is the twenty-fifth such report and it contains a summary of the statistics collected for the years 1974 – 2000.

I must express my thanks to the hotels for their continued co-operation in the conduct of this survey.

GOVERNMENT STATISTICIAN

FEBRUARY 2001

A. Definitions and Notes

- (a) Tourist: A tourist is a person who is primarily in Gibraltar for the purpose of a holiday. It is nevertheless up to the discretion of the individual hotels who to include under this category.
- (b) Guest Nights: Calculated on the basis of “one guest x one night”.
- (c) Sleeper Occupancy: Calculated as the percentage of guest-nights sold over guest-nights offered. It should be noted that this measure does not necessarily give an accurate indication of the ability of the hotel to accept more guests. e.g. one person staying in a room with two beds gives a 50% sleeper occupancy and a 100% room occupancy.
- (d) In interpreting the figures it should be noted that:
- From April 1976, the Victoria Hotel is not included.
 - The Holiday Inn (now The Elliott Hotel) is included from August 1973 onwards.
 - The Continental Hotel is included as from January 1986.
 - The Sunrise Motel is included for the period January 1992 to December 1994.
 - As from September 1992, the Montarik Hotel is not included.
 - As from November 1992, the Gibraltar Beach Hotel is not included.
 - The Cannon Hotel is included with effect from July 1995.
- (e) Abbreviations: GNS - Guest Nights Sold, GNO - Guest Nights Offered.

- C O N T E N T S -

		<u>PAGE</u>
A.	Definitions and Notes	
B.	Tables	1 - 44
<u>LIST OF TABLES</u>		
Table 1	General Analysis, all hotels 1974 - 2000	1
Chart	All Arrivals at Hotels, 1974 - 2000	2
Chart	% Sleeper Ocupancy, All Arrivals, 1988 - 2000	3
Chart	Average Length of Stay, All Arrivals, 1974 - 2000	4
Table 2(a)	Room Nights Sold and Offered, all hotels 1994 - 1998 (All Arrivals)	5
Table 2(b)	Room Nights Sold and Offered, all hotels 1999 - 2000 (All Arrivals)	6
Chart	Room Nights Sold, All Arrivals, 1997 - 2000	7
Table 2 (c)	Room Nights Sold and Offered, all hotels 1994 - 1998 (Tourist Arrivals)	8
Table 2 (d)	Room Nights Sold and Offered, all hotels 1999 - 2000 (Tourist Arrivals)	9
Chart	Room Nights Sold, Tourist Arrivals, 1997 - 2000	10
Table 3(a)	Room Occupancy Rates, 1990 - 1994	11
Table 3(b)	Room Occupancy Rates, 1995 - 2000	12
Chart	Room Occupancy Rates, All Arrivals, 1997 - 2000	13
Chart	Room Occupancy Rates, Tourist Arrivals, 1997 - 2000	14
Table 4(a)	Number of Arrivals by Month, all hotels 1974 - 1980	15
Table 4(b)	Number of Arrivals by Month, all hotels 1981 - 1987	16
Table 4(c)	Number of Arrivals by Month, all hotels 1988 - 1994	17
Table 4(d)	Number of Arrivals by Month, all hotels 1995 - 2000	18
Chart	All Arrivals at Hotels, 1995 - 2000	19
Table 5(a)	Guest Nights Sold/Offered, % Sleeper Occupancy, all hotels 1974 - 1977 (All Arrivals)	20
Table 5(b)	Guest Nights Sold/Offered, % Sleeper Occupancy, all hotels 1978 - 1981 (All Arrivals)	21
Table 5(c)	Guest Nights Sold/Offered, % Sleeper Occupancy, all hotels 1982 - 1985 (All Arrivals)	22

- C O N T E N T S -

		<u>PAGE</u>
<u>LIST OF TABLES</u>		
Table 5(d)	Guest Nights Sold/Offered, % Sleeper Occupancy, all hotels 1986 - 1989 (All Arrivals)	23
Table 5(e)	Guest Nights Sold/Offered, % Sleeper Occupancy, all hotels 1990 - 1993 (All Arrivals)	24
Table 5(f)	Guest Nights Sold/Offered, % Sleeper Occupancy, all hotels 1994 - 1997 (All Arrivals)	25
Table 5(g)	Guest Nights Sold/Offered, % Sleeper Occupancy, all hotels 1998 - 2000 (All Arrivals)	26
Chart	Guest Nights Sold, All Arrivals, 1998 - 2000	27
Chart	Guest Nights Offered, All Arrivals, 1998 - 2000	28
Chart	% Sleeper Occupancy, All Arrivals, 1998 - 2000	29
Table 6(a)	Guest Nights Sold/Offered, % Sleeper Occupancy, all hotels 1974 - 1977 (Tourist Arrivals)	30
Table 6(b)	Guest Nights Sold/Offered, % Sleeper Occupancy, all hotels 1978 - 1981 (Tourist Arrivals)	31
Table 6(c)	Guest Nights Sold/Offered, % Sleeper Occupancy, all hotels 1982 - 1985 (Tourist Arrivals)	32
Table 6(d)	Guest Nights Sold/Offered, % Sleeper Occupancy, all hotels 1986 - 1989 (Tourist Arrivals)	33
Table 6(e)	Guest Nights Sold/Offered, % Sleeper Occupancy, all hotels 1990 - 1993 (Tourist Arrivals)	34
Table 6(f)	Guest Nights Sold/Offered, % Sleeper Occupancy, all hotels 1994 - 1997 (Tourist Arrivals)	35
Table 6(g)	Guest Nights Sold/Offered, % Sleeper Occupancy, all hotels 1998 - 2000 (Tourist Arrivals)	36
Chart	Guest Nights Sold, Tourist Arrivals, 1998 - 2000	37
Chart	% Sleeper Occupancy, Tourist Arrivals, 1998 - 2000	38
Table 7(a)	Average Length of Stay per person (nights), all hotels 1974 - 2000 (All Arrivals)	39
Chart	Average Length of Stay, All Arrivals, 1998 - 2000	40
Table 7(b)	Average Length of Stay per person (nights), all hotels 1974 - 2000 (Tourist Arrivals)	41
Chart	Average Length of Stay, Tourist Arrivals, 1998 - 2000	42
Table 8	Summary Of Hotel Statistics, 1968 - 2000	43
Chart	Arrivals at Hotels, 1988 - 2000	44

B. Tables

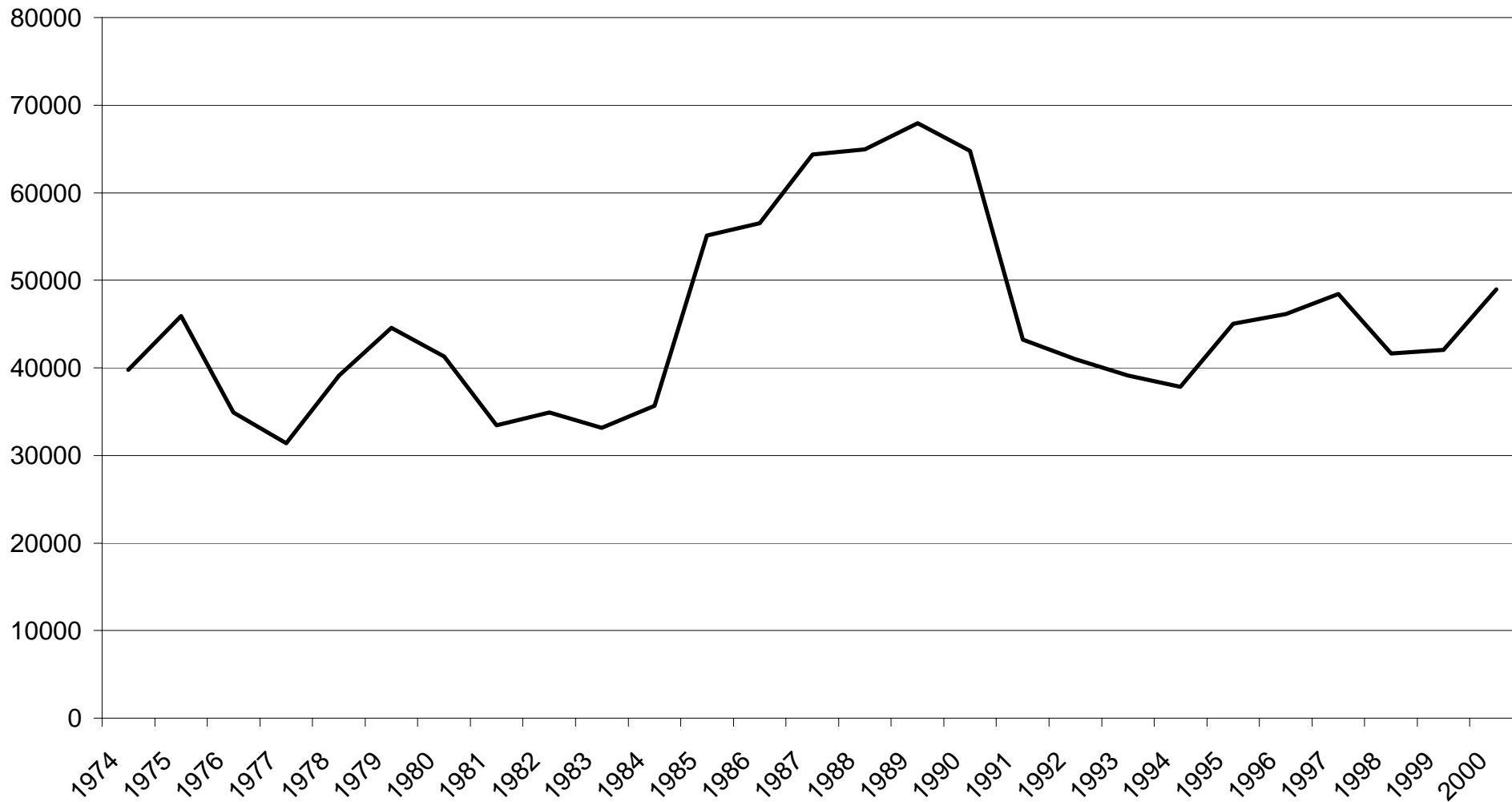
Table 1: General Analysis, All Hotels 1974 - 2000

YEAR	ALL ARRIVALS	RNO (00's)	RNS (00's) ALL	% ROOM OCCUPANCY ALL	GNO (000's)	GNS (000's) ALL	% SLEEPER OCCUPANCY ALL	AVERAGE LGTH. OF STAY ALL
1974	39758	n/a	n/a	n/a	548	271	49.5	6.8
1975	45894	n/a	n/a	n/a	581	308	53.0	6.7
1976	34933	n/a	n/a	n/a	563	245	43.5	7.0
1977	31402	n/a	n/a	n/a	526	208	39.4	6.6
1978	39102	n/a	n/a	n/a	539	257	47.8	6.6
1979	44569	n/a	n/a	n/a	559	296	53.0	6.6
1980	41308	n/a	n/a	n/a	551	256	46.5	6.2
1981	33417	n/a	n/a	n/a	519	188	36.2	5.6
1982	34896	n/a	n/a	n/a	529	223	42.2	6.4
1983	33142	n/a	n/a	n/a	546	210	38.4	6.3
1984	35690	n/a	n/a	n/a	546	226	41.3	6.3
1985	55119	n/a	n/a	n/a	552	282	51.0	5.1
1986	56525	n/a	n/a	n/a	519	266	51.3	4.6
1987	64349	n/a	n/a	n/a	535	278	52.3	4.3
1988	64942	n/a	n/a	61.3	551	286	52.0	4.4
1989	67934	n/a	n/a	53.3	501	220	44.0	3.2
1990	64793	n/a	n/a	51.3	481	197	40.8	3.0
1991	43193	n/a	n/a	50.6	502	178	35.5	4.1
1992	40986	2367	976	41.2	497	157	31.6	3.8
1993	39123	1946	941	48.4	391	157	40.2	4.0
1994	37851	1986	885	44.5	401	149	37.2	3.9
1995	45056	1860	850	45.7	369	144	39.2	3.2
1996	46142	1850	799	43.2	372	141	37.8	3.1
1997	48420	1904	900	47.3	370	144	39.0	3.0
1998	41616	1733	930	53.6	335	145	43.1	3.5
1999	42031	1792	991	55.3	351	154	43.7	3.7
2000	48949	1790	1054	58.9	368	164	44.6	3.4

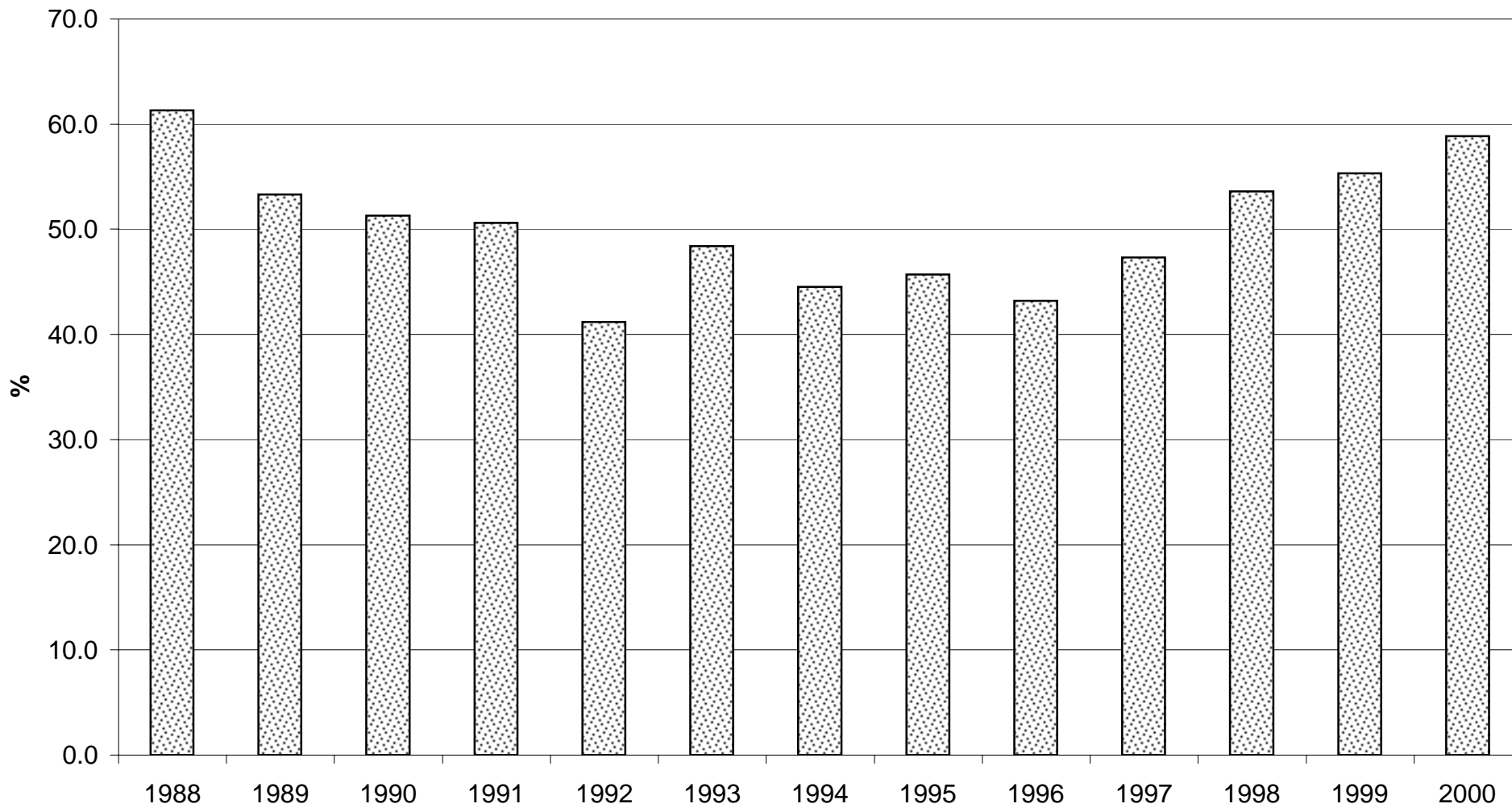
Notes:

1. RNO - Room Nights Offered.
2. RNS - Room nights Sold.
3. GNO - Guest Nights Offered.
4. GNS - Guest Nights Sold.
5. With effect from January 1992, hotels were required under the legislation to submit returns which included
The % room occupancy figures for the period 1988 to 1991 were provided voluntarily by the hotels.
room nights offered and sold.

ALL ARRIVALS AT HOTELS, 1974 - 2000



% ROOM OCCUPANCY, ALL ARRIVALS, 1988 - 2000



AVERAGE LENGTH OF STAY, ALL ARRIVALS, 1974 - 2000

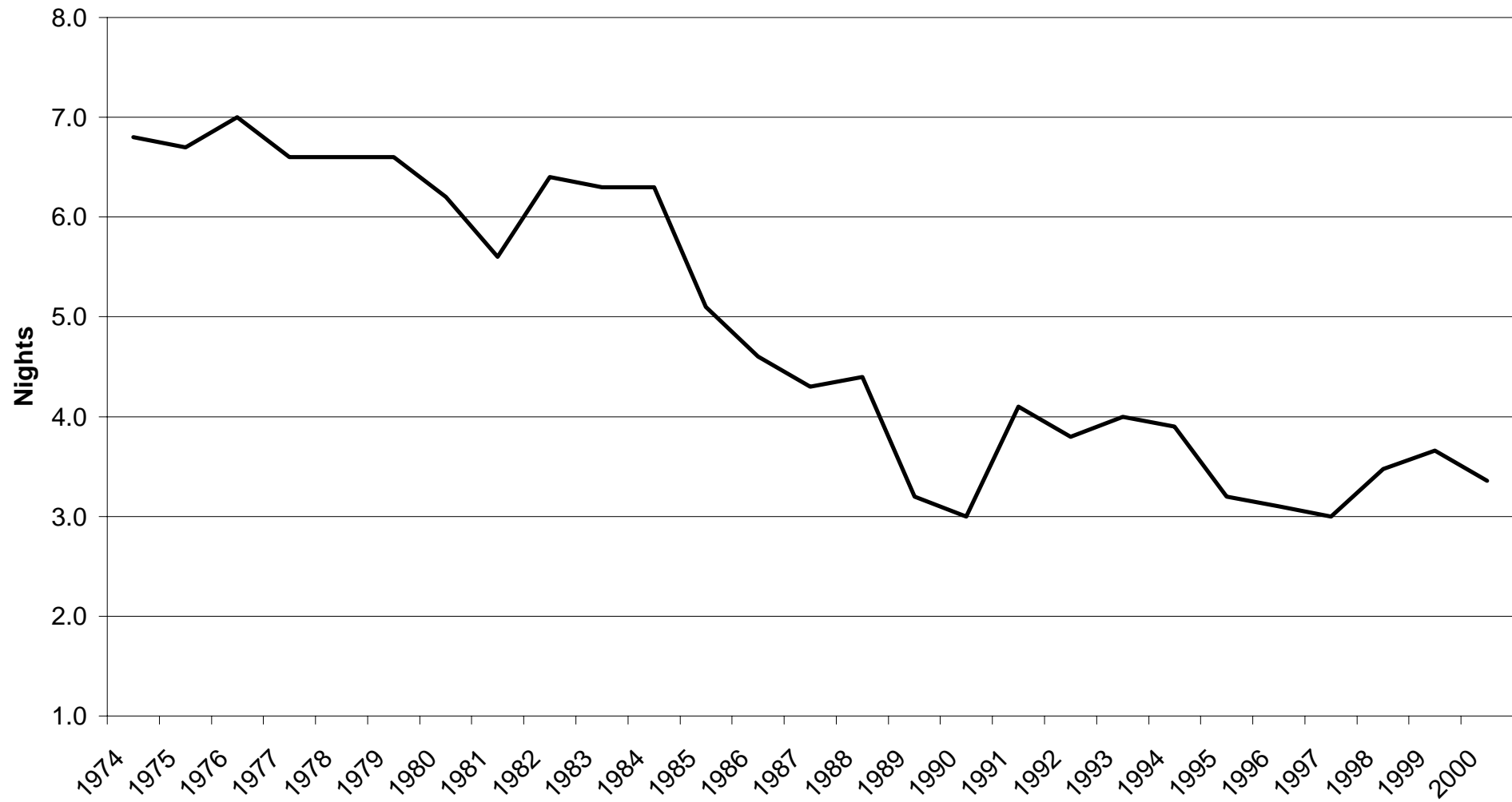


Table 2(a): Room Nights Sold and Offered, all hotels 1994-1998

ALL ARRIVALS

MONTH	ROOM NIGHTS SOLD (00's)					ROOM NIGHTS OFFERED (00's)				
	1994	1995	1996	1997	1998	1994	1995	1996	1997	1998
JANUARY	62	36	49	46	52	167	157	162	160	150
FEBRUARY	58	58	53	59	58	149	147	154	149	130
MARCH	75	67	70	72	72	165	159	165	173	150
APRIL	70	82	71	68	69	161	155	160	158	134
MAY	84	80	79	84	87	170	158	161	163	141
JUNE	80	85	80	82	82	164	157	154	158	140
JULY	86	94	65	78	80	168	167	158	162	144
AUGUST	71	86	71	88	94	167	167	159	162	144
SEPTEMBER	94	104	93	99	103	164	161	158	158	148
OCTOBER	88	79	79	90	90	176	162	160	161	152
NOVEMBER	61	57	58	80	82	167	161	158	159	148
DECEMBER	53	53	58	59	61	170	167	160	151	152
TOTAL	885	850	799	900	930	1986	1860	1850	1904	1733

Table 2(b): Room Nights Sold and Offered, all hotels 1999 - 2000

ALL ARRIVALS

MONTH	ROOM NIGHTS SOLD (00's)		ROOM NIGHTS OFFERED (00's)	
	1999	2000	1999	2000
JANUARY	59	46	152	150
FEBRUARY	60	59	137	141
MARCH	89	78	152	151
APRIL	84	86	148	147
MAY	83	125	152	152
JUNE	89	106	149	148
JULY	83	96	152	151
AUGUST	99	94	152	151
SEPTEMBER	103	119	148	148
OCTOBER	98	98	151	151
NOVEMBER	91	78	147	147
DECEMBER	53	68	151	151
TOTAL	991	1054	1792	1790

ROOM NIGHTS SOLD, ALL ARRIVALS, 1997 - 2000

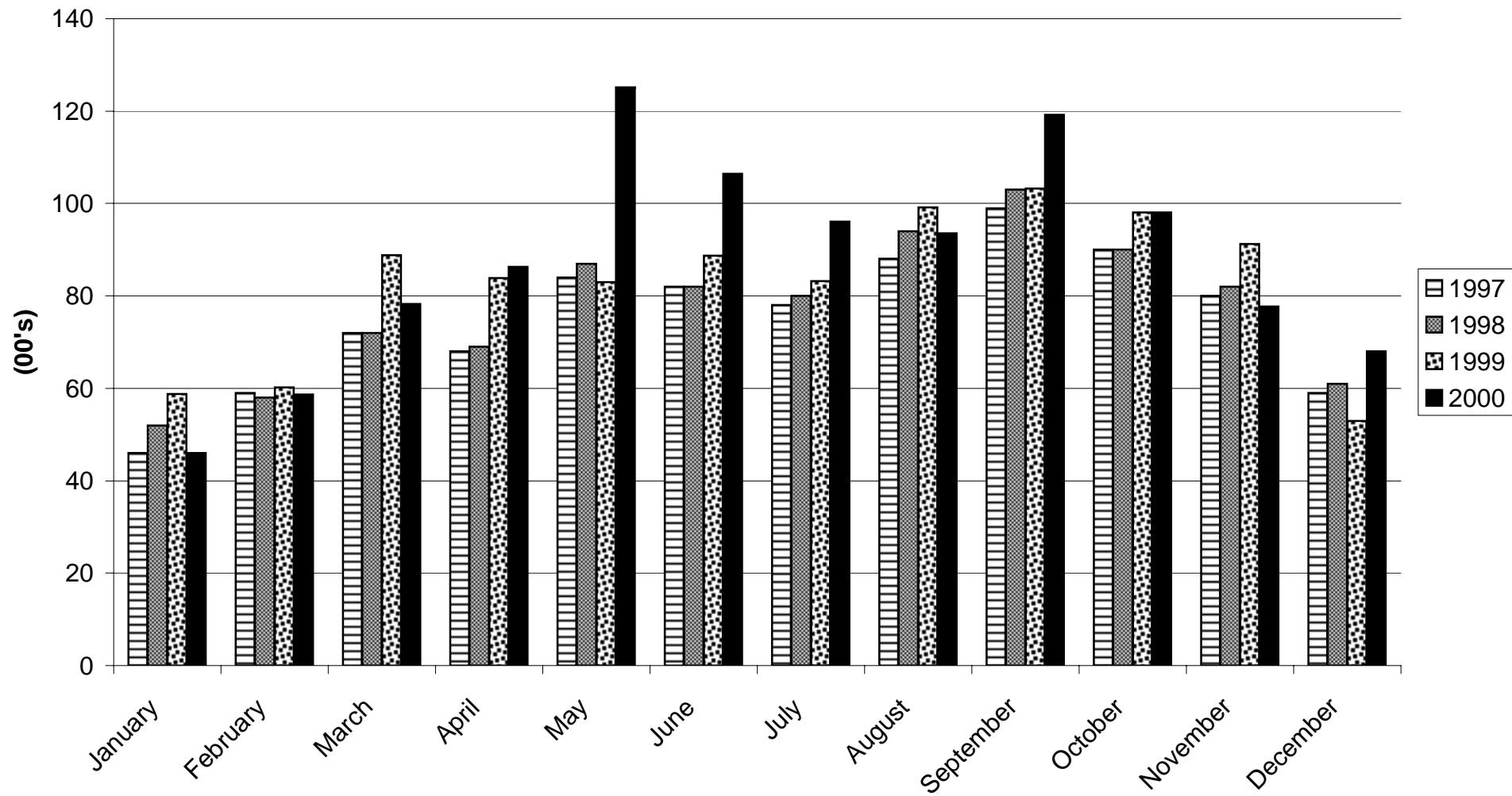


Table 2(c): Room Nights Sold and Offered, all hotels 1994 -1998

TOURIST ARRIVALS

MONTH	ROOM NIGHTS SOLD (00's)					ROOM NIGHTS OFFERED (00's)				
	1994	1995	1996	1997	1998	1994	1995	1996	1997	1998
JANUARY	39	25	27	24	35	167	157	162	160	150
FEBRUARY	35	38	34	35	38	149	147	154	149	130
MARCH	45	49	44	45	54	165	159	165	173	150
APRIL	43	60	48	40	45	161	155	160	158	134
MAY	48	56	51	52	57	170	158	161	163	141
JUNE	52	65	50	47	53	164	157	154	158	140
JULY	53	64	43	44	50	168	167	158	162	144
AUGUST	47	62	47	49	61	167	167	159	162	144
SEPTEMBER	64	82	54	55	70	164	161	158	158	148
OCTOBER	57	63	48	45	60	176	162	160	161	152
NOVEMBER	41	44	35	40	48	167	161	158	159	148
DECEMBER	39	41	33	30	35	170	167	160	151	152
TOTAL	563	619	488	500	605	1986	1860	1850	1904	1733

Table 2(d): Room Nights Sold and Offered, all hotels 1999 - 2000

TOURIST ARRIVALS

MONTH	ROOM NIGHTS SOLD (00's)		ROOM NIGHTS OFFERED (00's)	
	1999	2000	1999	2000
JANUARY	33	30	152	150
FEBRUARY	37	35	137	141
MARCH	52	50	152	151
APRIL	49	56	148	147
MAY	52	77	152	152
JUNE	55	66	149	148
JULY	50	60	152	151
AUGUST	61	65	152	151
SEPTEMBER	65	80	148	148
OCTOBER	63	66	151	151
NOVEMBER	52	50	147	147
DECEMBER	34	41	151	151
TOTAL	602	675	1792	1790

ROOM NIGHTS SOLD, TOURIST ARRIVALS, 1997 - 2000

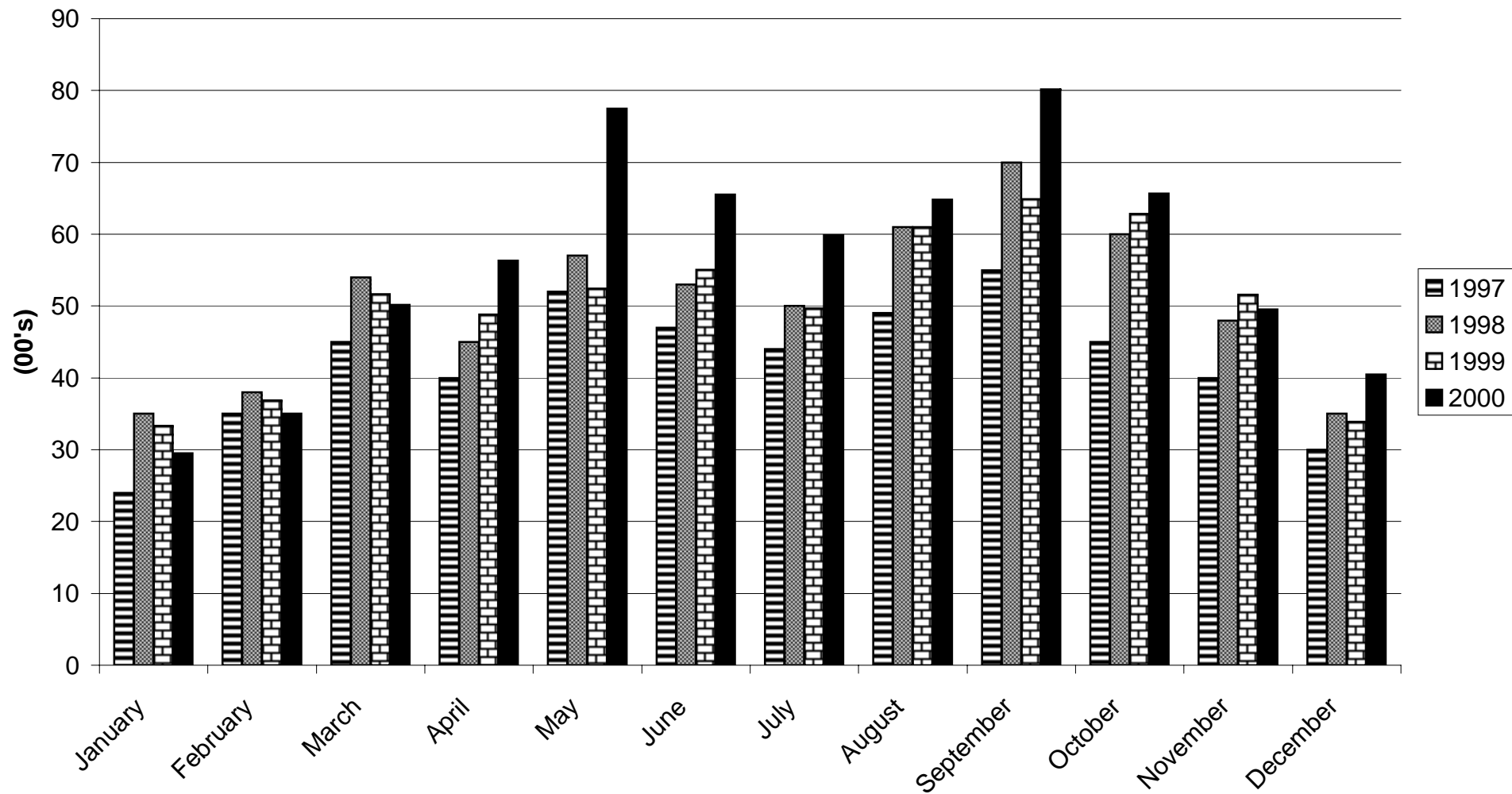


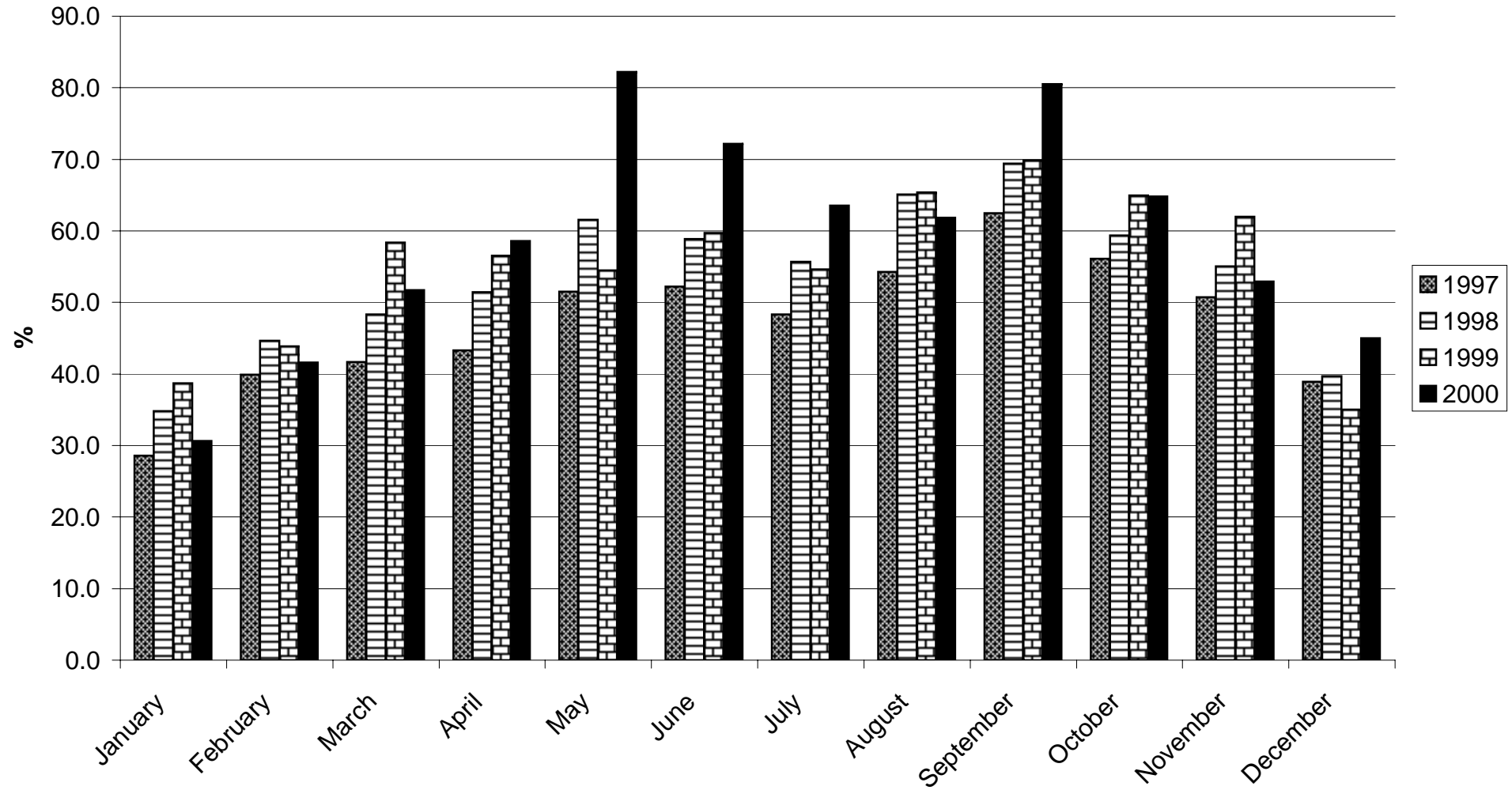
Table 3(a): Room Occupancy Rates, 1990 -1994

MONTH	ALL ARRIVALS					TOURIST ARRIVALS				
	1990	1991	1992	1993	1994	1990	1991	1992	1993	1994
JANUARY	41.6	40.3	30.1	30.6	37.5	19.9	16.0	17.4	15.9	23.6
FEBRUARY	52.8	48.1	30.2	42.5	39.0	27.9	18.6	17.8	22.4	23.6
MARCH	57.9	50.6	41.7	45.6	45.5	27.6	15.3	25.1	28.0	27.3
APRIL	52.9	39.9	40.2	46.3	43.5	37.1	19.6	25.3	29.3	26.8
MAY	60.5	49.7	46.2	57.0	49.7	22.6	23.8	27.1	33.6	28.4
JUNE	46.6	49.1	44.5	55.7	48.9	17.0	20.3	26.3	36.1	31.6
JULY	45.1	47.3	45.8	48.9	51.4	19.8	24.0	23.3	29.8	31.9
AUGUST	41.3	48.8	38.1	48.9	42.5	20.9	22.9	24.7	31.7	28.0
SEPTEMBER	57.2	52.3	51.3	63.0	57.6	27.5	28.0	28.5	37.2	38.8
OCTOBER	54.3	54.4	46.9	58.3	50.4	22.5	25.3	27.3	35.3	32.2
NOVEMBER	40.1	38.0	43.8	46.2	36.5	17.7	20.2	25.5	29.5	24.7
DECEMBER	39.6	30.7	35.1	36.3	31.5	19.9	17.3	23.7	24.9	22.7
TOTAL	51.3	50.6	41.2	48.4	44.5	24.0	23.7	24.3	29.5	28.3

Table 3(b): Room Occupancy Rates, 1995 - 2000

MONTH	ALL ARRIVALS						TOURIST ARRIVALS					
	1995	1996	1997	1998	1999	2000	1995	1996	1997	1998	1999	2000
JANUARY	23.1	30.4	28.6	34.8	38.7	30.6	16.2	16.3	14.8	23.1	21.9	19.6
FEBRUARY	39.7	34.2	39.9	44.7	43.9	41.6	26.2	21.8	23.4	29.4	26.9	24.8
MARCH	42.1	42.6	41.7	48.3	58.4	51.7	30.8	26.9	26.3	36.0	34.0	33.1
APRIL	52.7	44.2	43.3	51.4	56.5	58.6	38.8	30.1	25.1	33.5	32.9	38.3
MAY	50.3	49.3	51.5	61.6	54.5	82.2	35.4	31.7	31.5	40.4	34.4	50.9
JUNE	54.2	51.8	52.2	58.9	59.7	72.2	41.2	32.6	30.0	37.7	37.1	44.4
JULY	56.0	41.0	48.3	55.7	54.6	63.6	38.1	27.4	27.0	34.6	32.6	39.6
AUGUST	51.4	44.5	54.3	65.1	65.4	61.9	37.3	29.7	30.2	42.4	40.2	42.9
SEPTEMBER	64.4	59.0	62.5	69.4	69.9	80.5	51.0	34.3	35.0	47.0	43.9	54.2
OCTOBER	48.5	49.4	56.1	59.3	64.9	64.8	38.7	30.2	28.2	39.5	41.6	43.4
NOVEMBER	35.2	37.0	50.7	55.1	62.0	52.9	27.0	22.5	25.4	32.2	35.0	33.7
DECEMBER	31.7	36.2	38.9	39.7	35.1	45.0	24.5	20.4	19.7	23.1	22.4	26.8
TOTAL	45.7	43.2	47.3	53.6	55.3	58.9	33.3	26.4	26.3	34.9	33.6	37.7

ROOM OCCUPANCY RATES, ALL ARRIVALS, 1997 - 2000



ROOM OCCUPANCY RATES, TOURIST ARRIVALS, 1997 - 2000

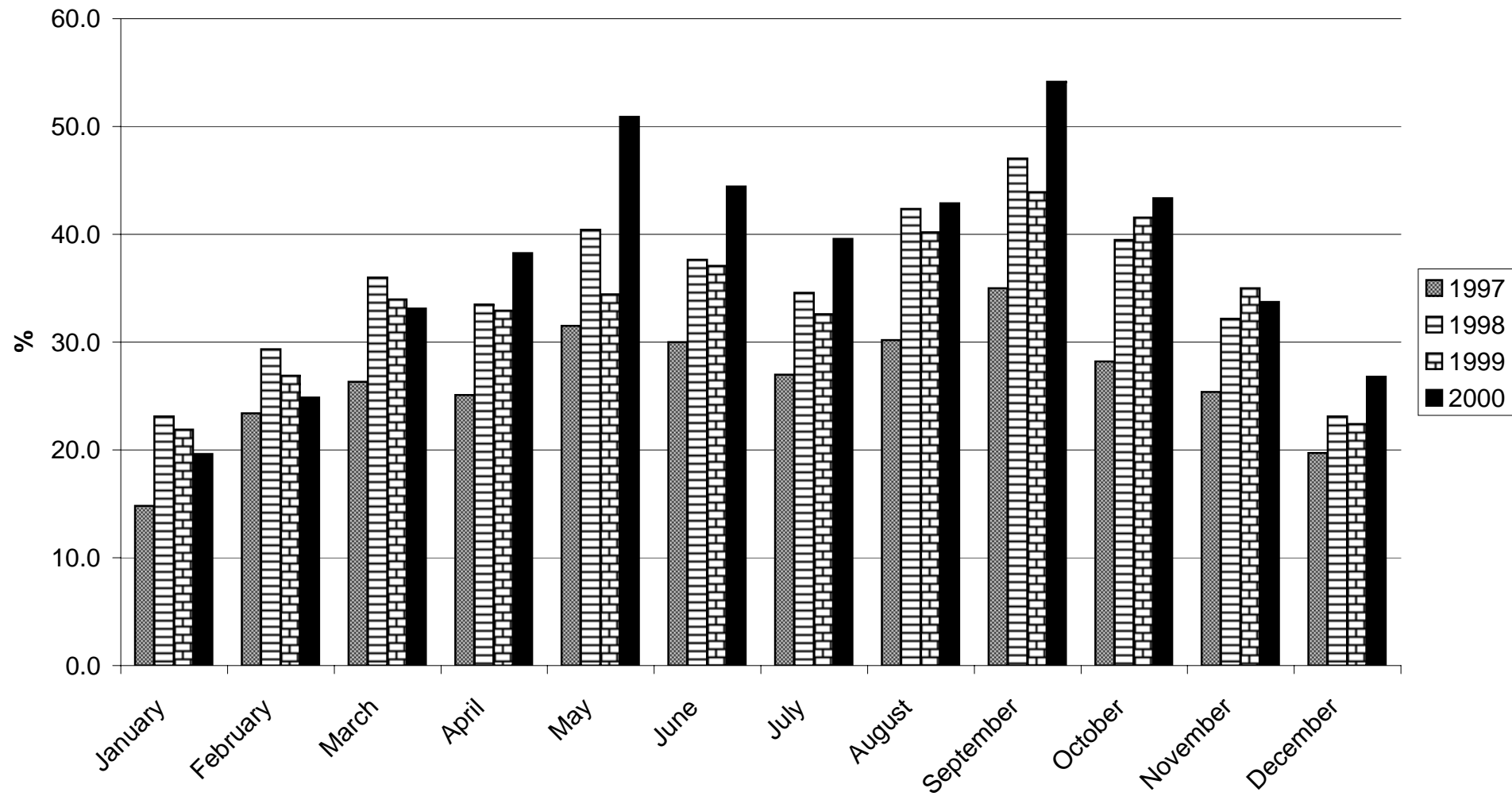


Table 4(a): Number of All Arrivals by Month, all hotels 1974 -1980

MONTH	ALL ARRIVALS (00's)							TOURIST ARRIVALS (00's)						
	1974	1975	1976	1977	1978	1979	1980	1974	1975	1976	1977	1978	1979	1980
JANUARY	24	28	21	16	18	21	27	22	22	17	10	13	16	23
FEBRUARY	31	31	26	25	24	38	31	28	27	19	18	19	23	26
MARCH	35	39	34	28	31	40	37	32	33	28	20	22	27	31
APRIL	29	28	26	25	32	28	35	26	26	22	19	25	23	29
MAY	32	38	39	28	36	39	43	28	33	34	25	29	34	32
JUNE	36	39	29	30	41	41	44	32	32	27	26	35	34	27
JULY	37	50	35	31	35	45	34	33	45	31	27	29	39	29
AUGUST	40	57	36	34	38	46	39	35	53	31	28	30	37	34
SEPTEMBER	35	47	31	26	39	47	38	31	43	27	23	33	39	34
OCTOBER	41	46	30	26	40	46	37	37	41	24	24	33	38	31
NOVEMBER	33	33	23	25	35	32	26	28	29	17	17	27	26	20
DECEMBER	24	23	20	20	23	23	22	21	18	15	16	17	18	15
TOTAL	397	459	350	314	392	446	413	353	402	292	253	312	354	331

Table 4(b): Number of All Arrivals by Month, all hotels 1981 -1987

MONTH	ALL ARRIVALS (00's)							TOURIST ARRIVALS (00's)						
	1981	1982	1983	1984	1985	1986	1987	1981	1982	1983	1984	1985	1986	1987
JANUARY	20	16	16	18	26	31	41	16	11	11	11	10	24	37
FEBRUARY	26	25	23	25	45	40	46	21	18	16	13	27	29	35
MARCH	33	37	26	26	49	46	63	26	24	18	17	36	38	50
APRIL	29	34	30	29	46	44	62	24	23	19	16	33	36	50
MAY	29	33	34	38	46	57	58	23	26	21	20	37	40	38
JUNE	28	32	27	28	46	51	51	23	23	20	21	35	39	35
JULY	31	29	31	33	52	45	44	21	23	20	21	38	34	36
AUGUST	32	34	32	34	54	52	51	23	22	21	23	43	40	41
SEPTEMBER	33	33	36	35	54	55	62	25	23	25	26	41	44	48
OCTOBER	31	31	30	40	51	50	63	25	20	19	27	35	42	48
NOVEMBER	23	23	25	30	46	49	60	18	17	16	20	35	43	48
DECEMBER	20	22	21	21	36	46	52	16	15	14	12	24	29	34
TOTAL	334	349	331	357	551	566	653	261	245	220	227	394	438	500

Table 4(c): Number of All Arrivals by Month, all hotels 1988-1994

MONTH	ALL ARRIVALS (00's)							TOURIST ARRIVALS (00's)						
	1988	1989	1990	1991	1992	1993	1994	1988	1989	1990	1991	1992	1993	1994
JANUARY	46	34	34	34	23	19	25	32	24	20	19	16	15	17
FEBRUARY	47	43	41	34	30	24	24	36	35	24	19	22	15	17
MARCH	63	52	79	39	34	29	31	47	41	30	23	27	21	21
APRIL	61	53	84	36	36	30	31	48	41	34	21	28	21	21
MAY	60	46	60	42	40	38	39	46	36	28	24	29	26	24
JUNE	58	50	53	32	41	35	33	40	42	23	21	28	24	23
JULY	54	66	63	39	38	33	34	36	39	31	25	26	22	24
AUGUST	53	59	46	35	36	33	33	36	41	25	24	29	25	23
SEPTEMBER	58	74	58	43	41	44	43	38	44	31	24	26	29	29
OCTOBER	49	77	50	47	39	45	39	36	53	26	25	27	29	27
NOVEMBER	58	67	41	26	28	35	25	36	44	21	16	20	23	17
DECEMBER	42	58	39	25	24	25	22	26	35	20	17	19	19	16
TOTAL	649	679	648	432	410	391	379	457	475	313	260	299	270	259

Table 4(d): Number of Arrivals by Month, all hotels 1995 - 2000

MONTH	ALL ARRIVALS (00's)						TOURIST ARRIVALS (00's)					
	1995	1996	1997	1998	1999	2000	1995	1996	1997	1999	1999	2000
JANUARY	20	28	24	30	26	22	16	20	15	16	17	15
FEBRUARY	28	34	32	28	26	28	22	25	19	17	17	19
MARCH	34	40	33	31	36	39	24	27	19	21	23	28
APRIL	40	41	39	34	37	42	28	30	22	23	23	30
MAY	38	42	48	38	36	48	26	26	28	25	25	35
JUNE	39	41	47	35	38	48	27	26	27	24	25	36
JULY	46	38	43	34	34	40	33	27	28	23	22	29
AUGUST	44	39	55	42	43	46	31	30	33	30	28	35
SEPTEMBER	57	47	54	40	42	56	41	30	31	30	27	41
OCTOBER	41	43	39	42	43	48	32	31	28	29	30	36
NOVEMBER	31	33	38	36	37	39	25	22	20	24	23	29
DECEMBER	32	35	32	28	24	33	25	25	19	18	17	24
TOTAL	451	461	484	416	421	489	331	319	289	279	277	359

ALL ARRIVALS AT HOTELS, 1995 - 2000

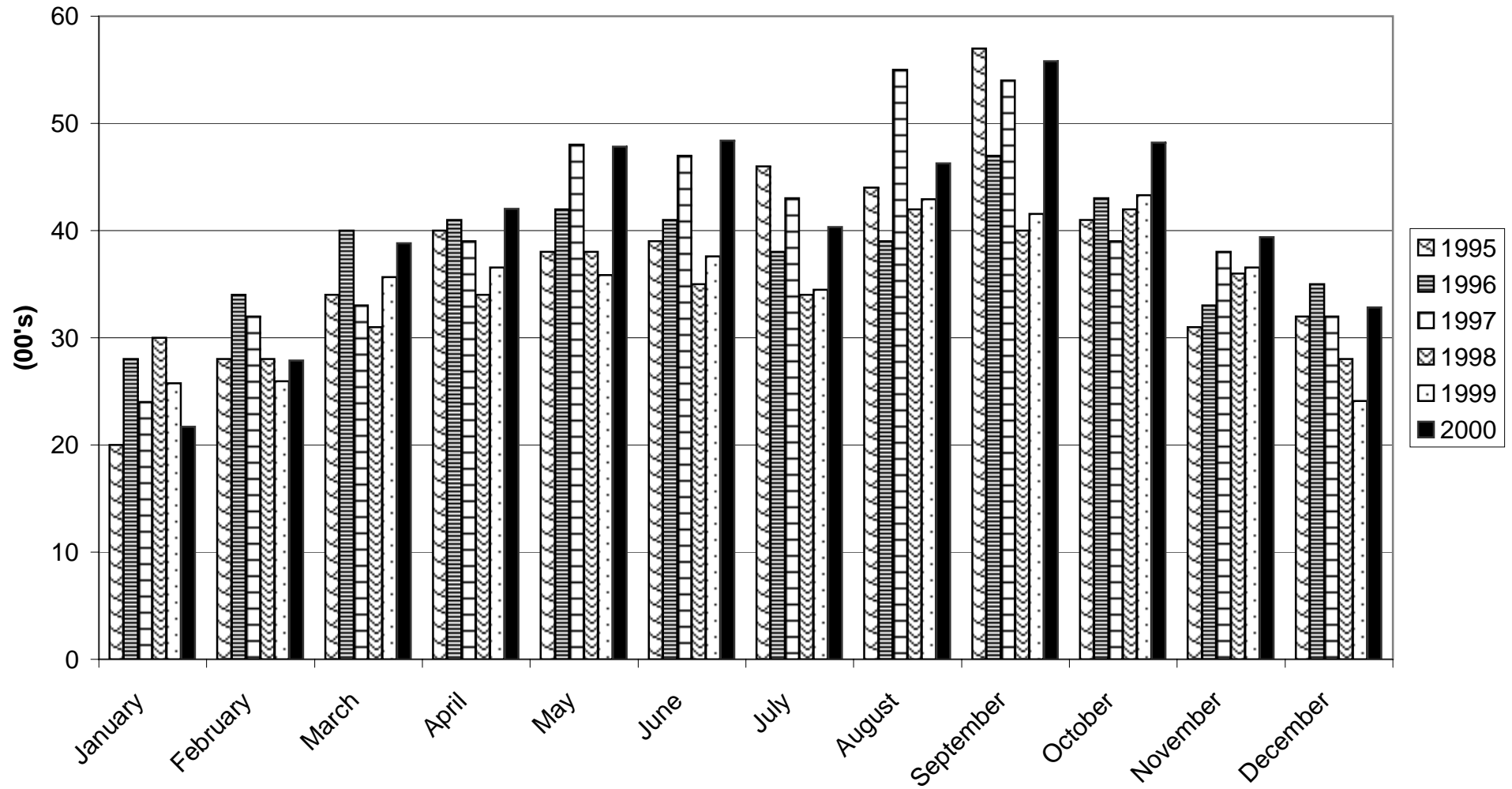


Table 5(a): Guest Nights Sold/Offered, % Sleeper Occupancy, all hotels 1974 -1977

ALL ARRIVALS

MONTH	GNS (000's)				GNO (000's)				% SLEEPER OCCUPANCY			
	1974	1975	1976	1977	1974	1975	1976	1977	1974	1975	1976	1977
JANUARY	14	15	12	10	44	47	50	44	32.3	32.2	23.4	23.0
FEBRUARY	17	18	14	17	40	43	47	40	43.6	43.4	29.0	41.3
MARCH	21	22	20	18	45	49	50	46	46.7	44.1	39.2	39.0
APRIL	18	21	17	15	45	48	47	44	39.4	43.8	35.6	33.9
MAY	20	30	21	17	47	51	48	45	43.4	59.7	45.1	37.6
JUNE	26	33	26	21	46	50	46	44	55.5	67.0	56.9	47.6
JULY	30	37	29	22	49	49	48	43	61.4	76.4	61.4	51.0
AUGUST	30	42	33	26	49	51	48	43	62.2	81.4	69.5	60.0
SEPTEMBER	28	33	25	21	46	50	44	44	61.4	66.8	56.1	48.8
OCTOBER	30	29	24	19	47	50	48	46	63.5	57.6	49.2	40.9
NOVEMBER	21	16	13	12	45	47	42	44	47.2	33.4	30.8	27.2
DECEMBER	16	11	11	11	47	48	45	45	33.8	24.1	24.8	24.0
TOTAL	271	307	245	209	550	583	563	528	49.5	53.0	43.5	39.4

Table 5(b): Guest Nights Sold/Offered, % Sleeper Occupancy, all hotels 1978-1981

ALL ARRIVALS

MONTH	GNS (000's)				GNO (000's)				% SLEEPER OCCUPANCY			
	1978	1979	1980	1981	1978	1979	1980	1981	1978	1979	1980	1981
JANUARY	9	10	12	10	45	45	45	44	19.3	23.3	26.6	23.2
FEBRUARY	12	17	14	13	40	42	42	40	30.2	40.3	32.9	31.9
MARCH	16	20	21	17	45	47	46	44	35.0	43.1	46.4	38.8
APRIL	21	17	23	18	44	46	47	44	46.4	38.0	48.5	40.3
MAY	22	24	22	16	46	47	48	44	48.4	50.9	46.9	37.1
JUNE	32	33	28	18	45	47	47	42	71.2	69.2	60.2	42.0
JULY	30	35	26	17	46	48	48	42	65.8	71.8	53.1	40.2
AUGUST	30	37	31	19	45	48	47	43	66.8	76.9	64.9	43.5
SEPTEMBER	30	39	30	19	46	47	47	43	64.3	82.2	63.0	44.1
OCTOBER	25	34	24	18	47	47	46	47	53.6	73.2	52.2	39.1
NOVEMBER	17	18	14	13	44	47	44	42	39.4	38.8	31.8	30.1
DECEMBER	13	12	11	10	45	48	44	44	29.1	24.7	26.2	23.6
TOTAL	257	296	256	188	538	559	551	519	47.8	53.0	46.5	36.2

Table 5(c): Guest Nights Sold/Offered, % Sleeper Occupancy, all hotels 1982 -1985

ALL ARRIVALS

MONTH	GNS (000's)				GNO (000's)				% SLEEPER OCCUPANCY			
	1982	1983	1984	1985	1982	1983	1984	1985	1982	1983	1984	1985
JANUARY	9	9	9	11	43	45	46	45	20.2	19.0	20.7	24.3
FEBRUARY	14	11	13	18	40	41	43	41	35.2	27.7	30.0	42.7
MARCH	19	16	15	25	44	46	47	46	42.4	34.8	32.5	54.0
APRIL	22	16	18	25	44	45	45	45	50.5	35.9	39.9	56.8
MAY	23	20	23	23	45	46	46	47	50.0	43.2	50.5	50.3
JUNE	24	23	23	31	45	45	45	45	54.7	49.7	50.8	69.4
JULY	24	20	22	28	46	47	45	48	51.9	42.3	50.1	58.0
AUGUST	24	25	25	32	45	47	47	48	52.0	54.0	53.0	67.7
SEPTEMBER	22	25	27	32	43	46	44	46	51.7	54.6	61.0	68.2
OCTOBER	19	21	25	27	45	47	46	48	42.6	43.7	53.2	55.6
NOVEMBER	12	13	15	17	44	45	45	46	27.9	30.2	32.3	36.9
DECEMBER	11	11	11	13	45	46	47	47	25.6	24.4	22.9	27.3
TOTAL	223	210	226	282	529	546	546	552	42.2	38.4	41.3	51.0

Table 5(d): Guest Nights Sold/Offered, % Sleeper Occupancy, all hotels 1986 -1989

ALL ARRIVALS

MONTH	GNS (000's)				GNO (000's)				% SLEEPER OCCUPANCY			
	1986	1987	1988	1989	1986	1987	1988	1989	1986	1987	1988	1989
JANUARY	13	19	16	15	43	46	46	42	30.1	42.1	35.8	35.2
FEBRUARY	15	18	19	18	38	42	44	40	39.0	43.9	42.6	46.0
MARCH	21	26	26	22	43	46	48	42	48.7	57.5	53.6	52.0
APRIL	18	24	26	23	42	43	45	42	42.0	55.6	57.1	54.8
MAY	25	25	26	19	45	45	47	44	57.2	55.7	55.1	41.9
JUNE	29	22	29	19	43	44	47	43	67.9	49.1	61.6	43.9
JULY	23	20	27	20	44	45	48	43	51.8	44.5	55.8	46.8
AUGUST	27	26	24	19	46	45	48	43	59.7	57.7	50.4	45.1
SEPTEMBER	29	29	26	19	44	45	44	42	64.8	65.6	60.4	46.0
OCTOBER	26	26	26	19	45	44	46	40	59.3	58.8	56.4	46.2
NOVEMBER	23	24	22	14	43	44	43	38	54.1	54.4	51.4	38.2
DECEMBER	17	20	19	13	44	46	45	42	38.5	42.5	42.6	31.2
TOTAL	266	279	286	220	520	535	551	501	51.3	52.3	52.0	44.0

Table 5(e): Guest Nights Sold/Offered, % Sleeper Occupancy, all hotels 1990 -1993

ALL ARRIVALS

MONTH	GNS (000's)				GNO (000's)				% SLEEPER OCCUPANCY			
	1990	1991	1992	1993	1990	1991	1992	1993	1990	1991	1992	1993
JANUARY	11	12	9	7	37	40	42	33	31.2	29.4	20.6	21.5
FEBRUARY	14	13	9	9	37	37	41	30	37.3	34.5	22.8	30.1
MARCH	19	17	14	12	42	44	46	33	45.3	37.5	29.6	36.2
APRIL	23	14	14	12	41	41	42	32	55.4	34.0	32.6	38.3
MAY	21	17	15	16	42	41	43	34	50.4	40.2	35.6	45.6
JUNE	15	16	16	15	39	44	47	32	37.3	35.8	34.8	48.0
JULY	18	16	16	14	42	43	45	32	43.8	37.9	35.2	41.8
AUGUST	15	16	14	14	41	40	44	33	35.2	41.2	32.2	44.0
SEPTEMBER	18	17	16	18	41	44	41	32	44.4	39.2	39.7	56.2
OCTOBER	18	18	15	17	40	43	42	34	44.5	42.5	34.6	50.9
NOVEMBER	12	13	10	13	40	41	32	32	30.2	31.1	32.6	39.4
DECEMBER	13	10	9	10	39	45	33	33	32.4	22.4	27.0	29.6
TOTAL	197	178	157	157	481	502	497	391	40.8	35.5	31.6	40.2

Table 5(f): Guest Nights Sold/Offered, % Sleeper Occupancy, all hotels 1994 -1997

ALL ARRIVALS

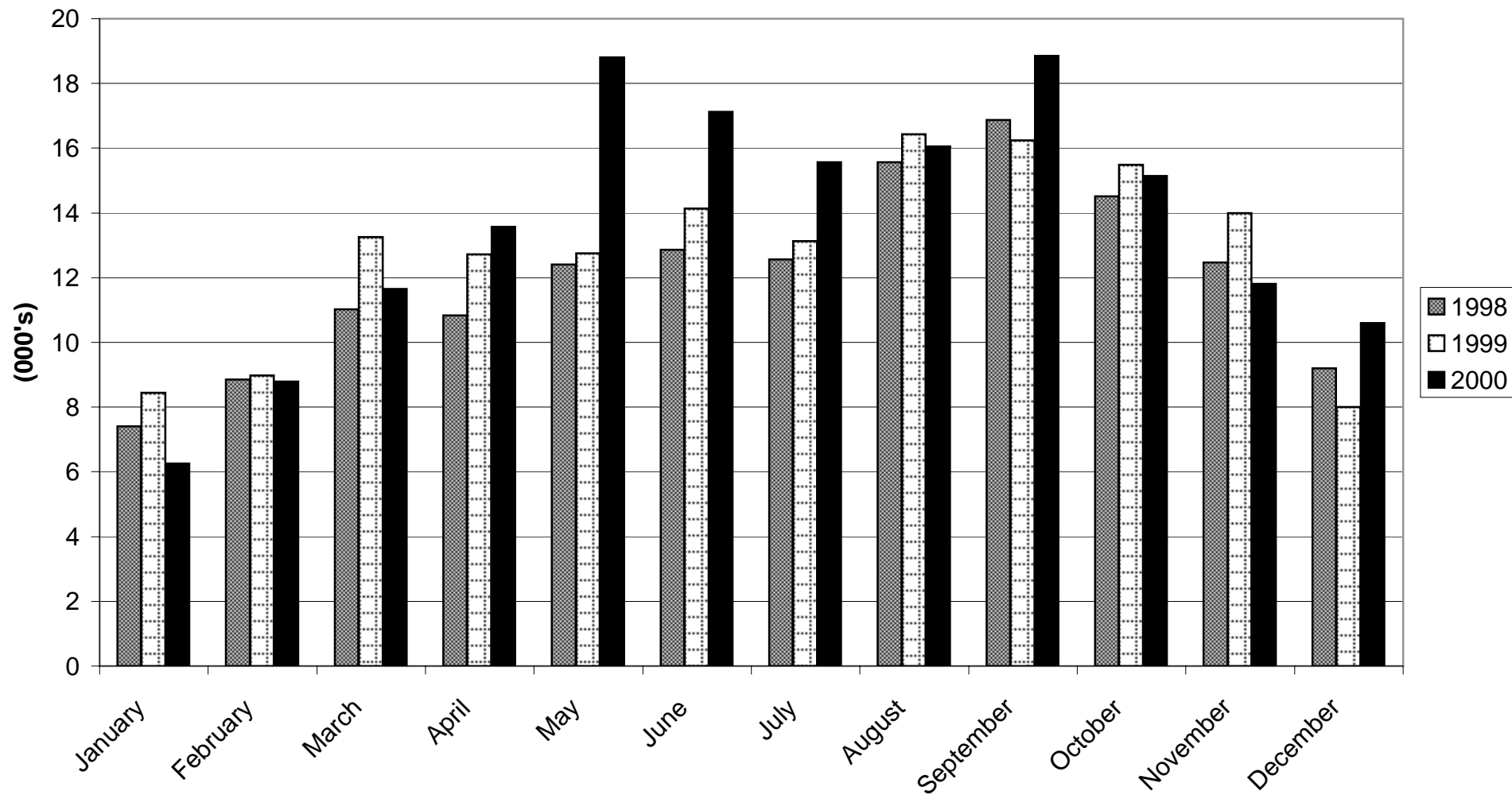
MONTH	GNS (000's)				GNO (000's)				% SLEEPER OCCUPANCY			
	1994	1995	1996	1997	1994	1995	1996	1997	1994	1995	1996	1997
JANUARY	10	6	8	8	34	32	32	31	29.4	19.0	24.9	24.1
FEBRUARY	9	10	9	10	30	28	30	29	31.3	34.9	29.9	34.1
MARCH	12	10	12	10	33	31	32	31	37.2	33.4	36.3	33.0
APRIL	12	13	12	11	31	25	31	31	39.2	49.5	39.1	36.3
MAY	15	13	14	14	35	31	32	32	42.5	41.4	43.0	45.0
JUNE	14	14	13	13	33	30	30	30	40.6	46.3	37.2	44.4
JULY	15	15	12	14	35	32	31	31	42.4	48.2	39.0	44.1
AUGUST	13	15	13	16	35	32	31	31	37.0	46.2	42.3	51.3
SEPTEMBER	16	18	16	16	33	31	31	31	48.9	58.0	51.9	50.7
OCTOBER	15	13	13	14	35	32	31	31	43.9	41.1	42.8	44.1
NOVEMBER	9	9	10	10	33	31	30	31	27.8	28.1	31.3	31.7
DECEMBER	9	9	9	9	34	32	31	31	25.2	26.7	29.0	28.2
TOTAL	149	144	141	144	401	369	372	370	37.2	39.2	37.8	39.0

Table 5(g): Guest Nights Sold/Offered, % Sleeper Occupancy, all hotels 1998 - 2000

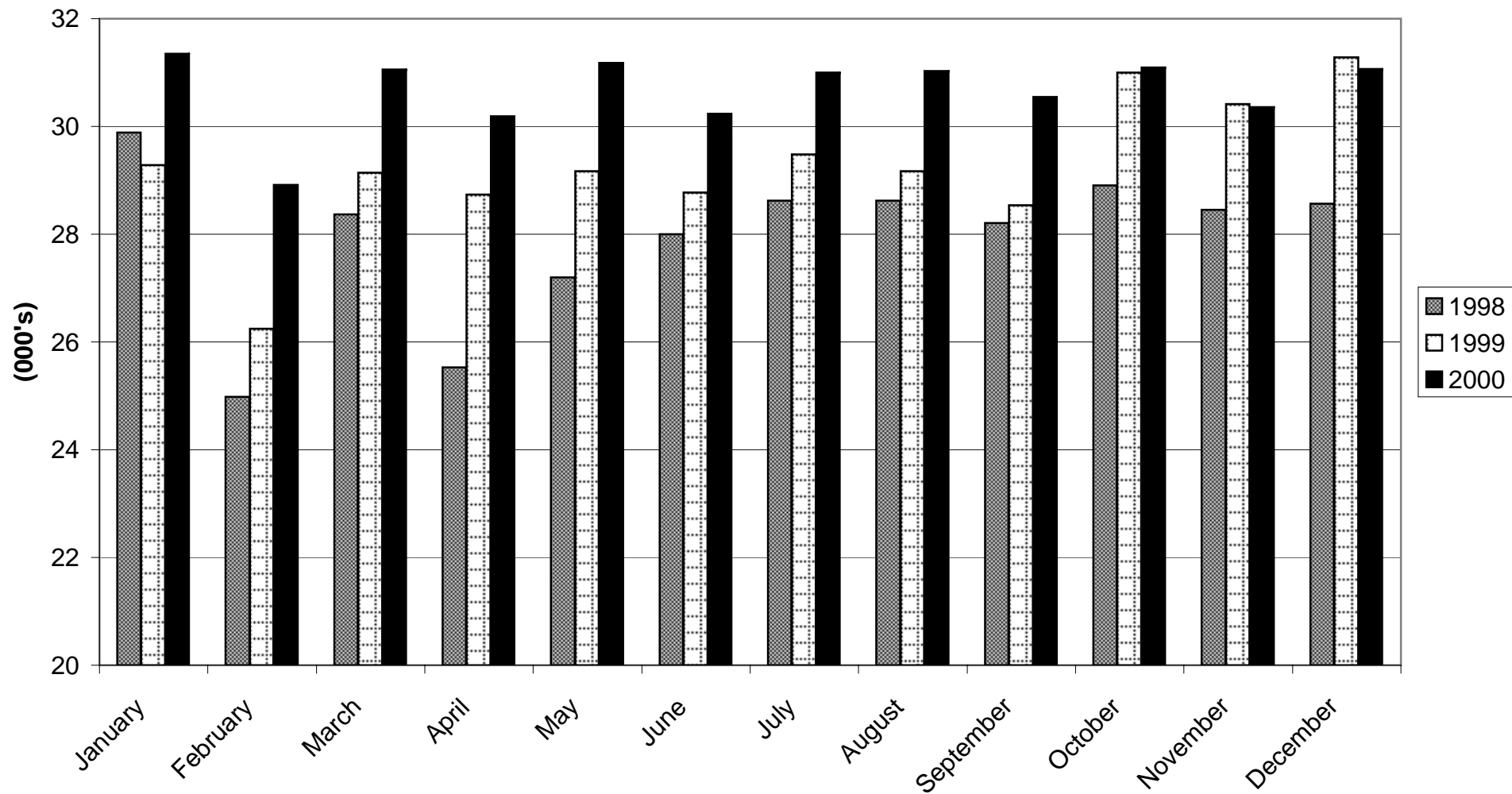
ALL ARRIVALS

MONTH	GUEST NIGHTS SOLD (000's)			GUEST NIGHTS OFFERED (000's)			% SLEEPER OCCUPANCY		
	1998	1999	2000	1998	1999	2000	1998	1999	2000
JANUARY	7	8	6	30	29	31	24.8	28.8	20.0
FEBRUARY	9	9	9	25	26	29	35.4	34.2	30.4
MARCH	11	13	12	28	29	31	38.8	45.5	37.5
APRIL	11	13	14	26	29	30	42.4	44.3	45.0
MAY	12	13	19	27	29	31	45.6	43.7	60.3
JUNE	13	14	17	28	29	30	45.9	49.1	56.6
JULY	13	13	16	29	29	31	43.9	44.5	50.2
AUGUST	16	16	16	29	29	31	54.4	56.3	51.8
SEPTEMBER	17	16	19	28	29	31	59.8	56.9	61.7
OCTOBER	15	15	15	29	31	31	50.2	50.0	48.7
NOVEMBER	12	14	12	28	30	30	43.8	46.0	38.9
DECEMBER	9	8	11	29	31	31	32.2	25.6	34.1
TOTAL	145	154	164	335	351	368	43.1	43.8	44.6

GUEST NIGHTS SOLD, ALL ARRIVALS, 1998 - 2000



GUEST NIGHTS OFFERED, ALL ARRIVALS, 1998 - 2000



% SLEEPER OCCUPANCY, ALL ARRIVALS, 1998 - 2000



Table 6(a): Guest Nights Sold/Offered, % Sleeper Occupancy, all hotels 1974 -1977

TOURIST ARRIVALS

MONTH	GNS (000's)				GNO (000's)				% SLEEPER OCCUPANCY			
	1974	1975	1976	1977	1974	1975	1976	1977	1974	1975	1976	1977
JANUARY	12	12	9	6	43	47	50	44	28.5	26.2	17.9	13.2
FEBRUARY	15	15	10	13	40	43	47	40	38.6	36.4	21.7	31.0
MARCH	19	18	17	15	45	49	50	46	41.7	37.0	33.2	32.1
APRIL	16	18	15	12	45	48	47	44	35.1	37.1	31.7	27.7
MAY	19	24	19	16	47	51	48	45	39.8	46.4	39.6	34.3
JUNE	23	26	24	19	46	50	46	44	50.0	52.4	52.0	44.1
JULY	27	33	26	20	49	49	48	43	55.3	67.1	55.5	45.5
AUGUST	28	36	31	22	49	51	48	43	56.6	70.1	64.0	52.0
SEPTEMBER	25	29	23	18	46	50	44	44	54.5	59.0	52.4	42.1
OCTOBER	26	26	21	16	47	50	48	46	55.4	51.7	44.7	35.2
NOVEMBER	17	14	11	9	45	47	42	44	38.2	29.3	25.3	21.4
DECEMBER	13	9	9	9	47	48	45	45	27.9	19.8	21.0	19.3
TOTAL	240	260	215	175	549	583	563	528	43.8	44.8	38.3	33.1

Table 6(b): Guest Nights Sold/Offered, % Sleeper Occupancy, all hotels 1978 -1981

TOURIST ARRIVALS

MONTH	GNS (000's)				GNO (000's)				% SLEEPER OCCUPANCY			
	1978	1979	1980	1981	1978	1979	1980	1981	1978	1979	1980	1981
JANUARY	6	8	10	8	45	45	45	44	14.4	18.0	22.2	18.0
FEBRUARY	10	11	11	9	40	42	42	40	24.1	25.3	26.4	21.4
MARCH	13	14	17	13	45	47	46	44	28.7	30.4	36.4	30.4
APRIL	18	15	17	14	44	46	47	44	39.5	31.3	37.1	31.1
MAY	19	21	17	13	46	47	48	44	42.3	44.3	35.9	30.4
JUNE	26	27	22	14	45	47	47	42	58.0	57.4	46.3	32.7
JULY	27	30	23	12	46	48	48	42	59.1	62.7	46.7	28.5
AUGUST	27	30	28	15	45	48	47	43	59.6	63.4	59.3	34.6
SEPTEMBER	26	34	25	16	46	47	47	43	57.0	72.3	53.6	37.2
OCTOBER	22	27	21	15	47	47	46	47	47.6	57.4	45.7	32.1
NOVEMBER	15	13	11	10	44	47	44	42	33.9	27.1	25.1	24.4
DECEMBER	10	9	8	8	45	48	44	44	23.2	19.5	19.2	18.0
TOTAL	219	239	210	147	538	559	551	519	40.9	42.8	38.2	28.3

Table 6(c): Guest Nights Sold/Offered, % Sleeper Occupancy, all hotels 1982 -1985

TOURIST ARRIVALS

MONTH	GNS (000's)				GNO (000's)				% SLEEPER OCCUPANCY			
	1982	1983	1984	1985	1982	1983	1984	1985	1982	1983	1984	1985
JANUARY	7	7	7	8	43	45	46	45	15.3	15.5	15.0	16.5
FEBRUARY	10	8	8	14	40	41	43	41	24.8	20.7	19.4	33.8
MARCH	13	11	12	19	44	46	47	46	30.4	24.7	24.6	42.2
APRIL	16	10	13	18	44	45	45	45	36.1	23.4	28.4	40.2
MAY	16	14	15	18	45	46	46	47	35.2	29.4	33.2	39.4
JUNE	19	18	18	24	45	45	45	45	42.2	38.7	40.6	52.9
JULY	19	16	18	23	46	47	45	48	40.5	33.6	40.0	47.5
AUGUST	18	19	20	27	45	47	47	48	40.2	41.9	42.0	57.0
SEPTEMBER	16	19	22	26	43	46	44	46	43.4	41.7	50.2	56.7
OCTOBER	14	14	19	19	45	47	46	48	29.9	30.5	41.0	40.2
NOVEMBER	9	10	11	13	44	45	45	46	21.4	21.2	24.6	28.4
DECEMBER	8	9	8	9	45	46	47	47	18.3	18.4	17.4	18.8
TOTAL	165	155	171	218	529	546	546	552	31.1	28.4	31.3	39.6

Table 6(d): Guest Nights Sold/Offered, % Sleeper Occupancy, all hotels 1986 -1989

TOURIST ARRIVALS

MONTH	GNS (000's)				GNO (000's)				% SLEEPER OCCUPANCY			
	1986	1987	1988	1989	1986	1987	1988	1989	1986	1987	1988	1989
JANUARY	10	15	13	10	43	46	46	42	22.1	33.6	27.5	23.7
FEBRUARY	12	15	14	13	38	42	44	40	31.0	34.8	32.2	33.4
MARCH	16	21	19	15	43	46	48	42	38.1	46.3	39.8	36.2
APRIL	13	19	20	16	42	43	45	42	30.7	44.9	44.8	37.0
MAY	19	18	19	12	45	45	47	44	41.9	38.6	40.3	27.9
JUNE	23	16	20	14	43	44	47	43	52.8	36.9	43.5	32.7
JULY	18	15	19	13	44	45	48	43	41.0	34.3	39.2	30.6
AUGUST	21	19	17	13	46	45	48	43	46.3	42.5	34.5	30.6
SEPTEMBER	21	22	17	12	44	45	44	42	48.1	49.7	37.8	29.8
OCTOBER	20	21	17	14	45	44	46	40	45.3	46.4	37.9	34.0
NOVEMBER	18	18	14	11	43	44	43	38	41.7	41.8	32.5	27.6
DECEMBER	12	14	11	9	44	46	45	42	27.5	29.8	24.3	21.7
TOTAL	203	213	200	152	520	535	551	501	38.6	40.0	36.2	30.4

Table 6(e): Guest Nights Sold/Offered, % Sleeper Occupancy, all hotels 1990 -1993

TOURIST ARRIVALS

MONTH	GNS (000's)				GNO (000's)				% SLEEPER OCCUPANCY			
	1990	1991	1992	1993	1990	1991	1992	1993	1990	1991	1992	1993
JANUARY	8	7	5	4	37	40	42	33	22.7	17.7	12.9	12.4
FEBRUARY	10	8	6	5	37	37	41	30	27.1	20.2	15.4	17.7
MARCH	13	8	9	8	42	44	46	33	31.0	19.1	19.3	23.0
APRIL	14	9	9	8	41	41	42	32	34.0	21.9	21.7	25.2
MAY	12	10	9	10	42	41	43	34	29.4	23.3	20.7	28.5
JUNE	10	8	10	10	39	44	47	32	24.3	19.4	22.0	32.7
JULY	12	10	10	8	42	43	45	32	27.4	23.2	21.3	26.2
AUGUST	10	8	10	10	41	40	44	33	23.1	21.3	22.0	30.5
SEPTEMBER	12	8	9	12	41	44	41	32	30.0	18.2	22.7	36.8
OCTOBER	11	10	9	11	40	43	42	34	27.8	23.3	20.8	33.2
NOVEMBER	8	7	6	9	40	41	32	32	19.5	16.4	20.1	27.8
DECEMBER	8	6	6	7	39	45	33	33	20.9	12.9	17.5	21.8
TOTAL	128	99	98	103	481	502	497	391	26.5	19.7	19.8	26.4

Table 6(f): Guest Nights Sold/Offered, % Sleeper Occupancy, all hotels 1994 -1997

TOURIST ARRIVALS

MONTH	GNS (000's)				GNO (000's)				% SLEEPER OCCUPANCY			
	1994	1995	1996	1997	1994	1995	1996	1997	1994	1995	1996	1997
JANUARY	7	5	5	5	34	32	32	31	19.5	15.1	16.4	15.2
FEBRUARY	6	7	7	6	30	28	30	29	21.1	25.8	22.8	22.3
MARCH	8	8	9	7	33	31	32	31	24.5	26.4	26.7	21.3
APRIL	9	10	10	7	31	25	31	31	27.1	38.1	30.9	23.9
MAY	10	9	10	10	35	31	32	32	28.5	30.8	30.9	29.9
JUNE	9	11	9	9	33	30	30	30	28.3	37.2	30.5	28.9
JULY	10	11	9	9	35	32	31	31	28.7	36.2	29.3	28.6
AUGUST	8	11	10	11	35	32	31	31	25.6	34.8	32.0	34.5
SEPTEMBER	12	14	10	11	33	31	31	31	35.2	45.6	34.3	34.8
OCTOBER	11	11	10	9	35	32	31	31	30.4	34.1	30.9	28.3
NOVEMBER	7	7	7	6	33	31	30	31	20.6	23.8	21.5	20.9
DECEMBER	6	7	6	6	34	32	31	31	18.9	21.8	20.7	18.9
TOTAL	103	113	101	95	401	369	372	370	25.8	30.7	27.2	25.6

Table 6(g): Guest Nights Sold/Offered, % Sleeper Occupancy, all hotels 1998 - 2000

TOURIST ARRIVALS

MONTH	GUEST NIGHTS SOLD (000's)			GUEST NIGHTS OFFERED (000's)			% SLEEPER OCCUPANCY		
	1998	1999	2000	1998	1999	2000	1998	1999	2000
JANUARY	4	5	4	30	29	31	14.4	17.2	13.0
FEBRUARY	5	6	6	25	26	29	21.4	21.8	20.0
MARCH	7	8	8	28	29	31	25.8	27.7	25.9
APRIL	7	8	9	26	29	30	28.8	27.3	30.8
MAY	8	9	12	27	29	31	30.6	30.0	39.1
JUNE	9	9	11	28	29	30	30.5	31.4	36.6
JULY	8	8	10	29	29	31	28.4	27.6	33.4
AUGUST	10	10	12	29	29	31	36.5	35.2	37.6
SEPTEMBER	12	10	14	28	29	31	41.5	36.2	44.3
OCTOBER	10	11	10	29	31	31	34.6	34.3	31.6
NOVEMBER	8	9	8	28	30	30	27.1	28.8	26.7
DECEMBER	6	5	7	29	31	31	19.5	17.3	21.6
TOTAL	95	98	111	335	351	368	28.2	27.9	30.1