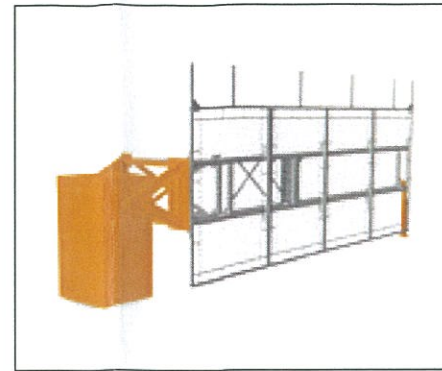


Location Plan



Rising fenced barriers (Automatic systems product).



Punched stainless steel louvered railings



NOTES

This drawing is the copyright and property of AKS Architects and Engineers Ltd. It must not be copied or published without written consent.

Do not scale from this drawing.

All dimensions to be checked on site.

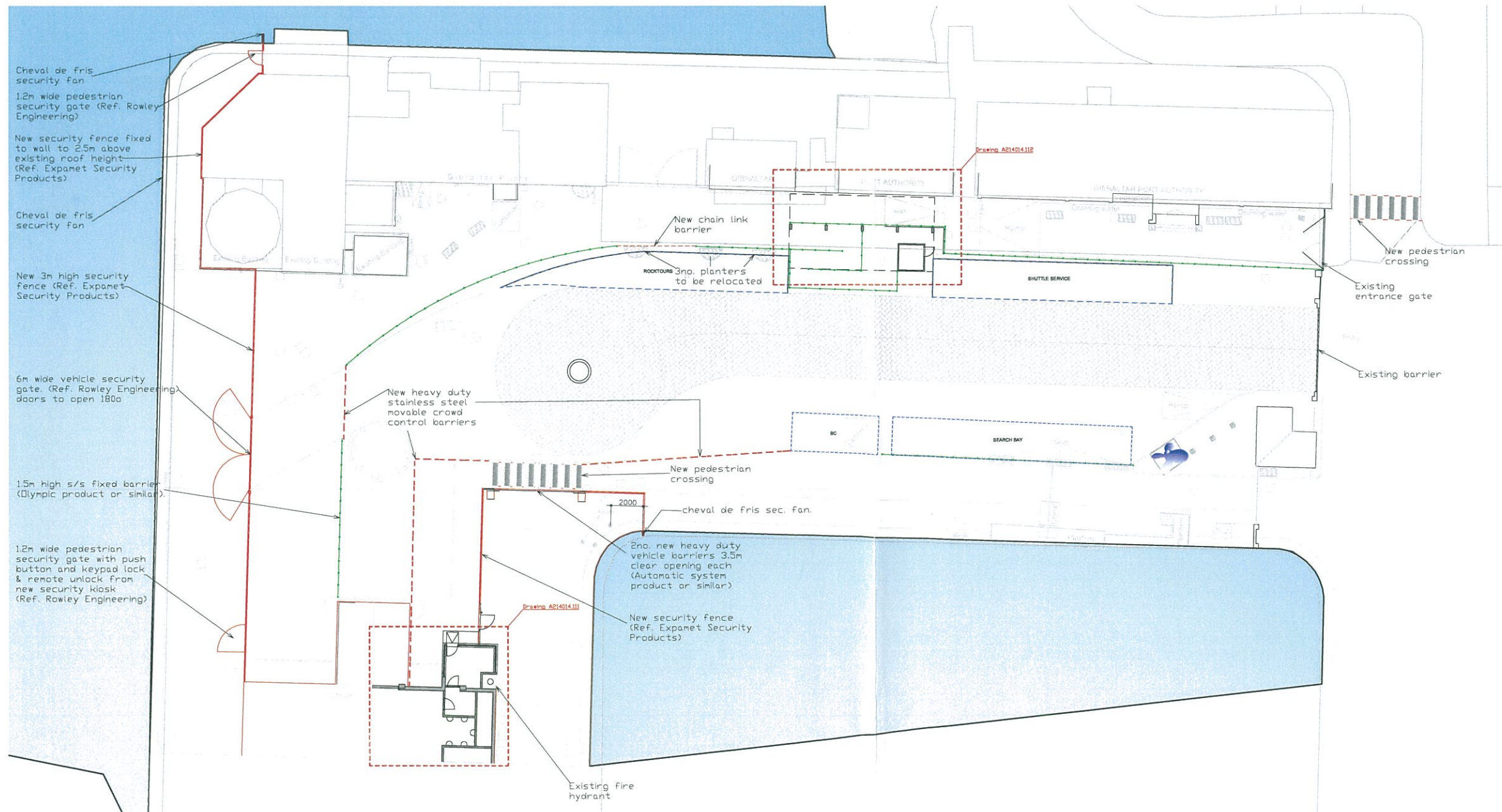
KEY:

- - - - - Movable stainless steel crowd control barrier
- - - - - Stainless steel link chain
- Security fencing (3m high unless stated otherwise) Ref. Expanet Super Security Fencing.
- - - - - Stainless steel fixed barrier (1.5m high) by Olympic Products Ltd or similar

NOTES:

New security kiosks to be made of rendered blockwork walls on a concrete foundation with a non-slip tiled floor finish, plasterboard walls and ceilings internally, and a timber framed insulated flat roof with a waterproof finish by Samafil or similar approved

New canopy to be made of a galvanised painted steel structure with steel purlins and profiled metal sheet roofing - colour to clients choice.



Plan

TOWN PLANNING
BUILDING CONTROL
15 MAY 2014
RECEIVED

B	09.5.14	General update to clients requirements
A	28.3.14	General update to clients requirements
rev	date	description

AKS ARCHITECTS & ENGINEERS
P.O. Box 855, Gibraltar
Tel: (+350) 20073260 Fax: (+350) 20074739 Email: mail@aks.gi

client
Government of Gibraltar

project
Gibraltar Port Restricted Area

title
Site Plan

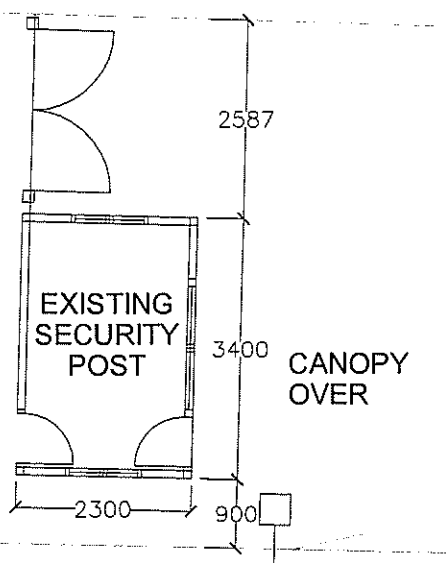
scale
1:200@A1

drw	EG	chk	DH
drawing no.	A214014.100	rev.	B
		date	12.03.14

notes
 This drawing is the copyright and property of AKS Architects and Engineers Ltd. It must not be copied or published without written consent.
 Do not scale from this drawing.
 All dimensions to be checked on site.
TOWN PLANNING AND BUILDING CONTROL
 15 MAY 2014
RECEIVED



EXISTING PEDESTRIAN GATE
 2.4M HIGH

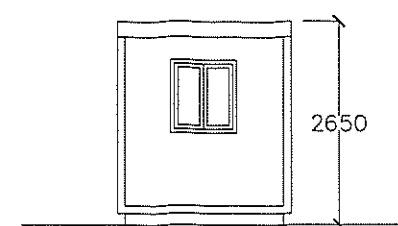


EXISTING PAVEMENT

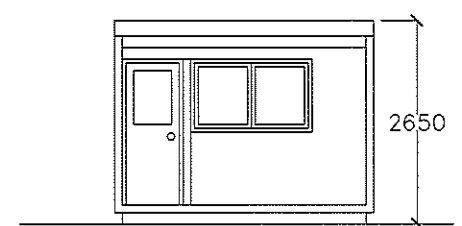
CANOPY OVER

EXISTING VEHICLE BARRIERS

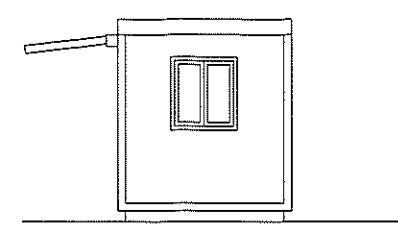
Existing Plan



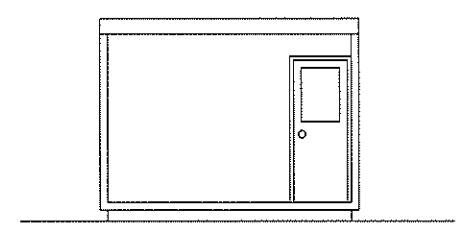
South Elevation



East Elevation

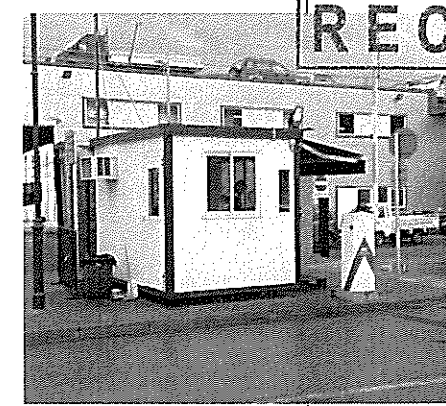


North Elevation



West Elevation

Existing Elevations



Existing Photo

- KEY:
- - - - - Movable stainless steel crowd control barrier
 - - - - - Stainless steel link chain
 - ===== Security fencing (3m high unless stated otherwise) Ref. Expamet Super Security Fencing.
 - - - - - Stainless steel fixed barrier (1.5m high) by Olympic Products Ltd or similar

NOTES:

New security kiosks to be made of rendered blockwork walls on a concrete foundation with a non-slip tiled floor finish, plasterboard walls and ceilings internally, and a timber framed insulated flat roof with a waterproof finish by Samafil or similar approved

New canopy to be made of a galvanised painted steel structure with steel purlins and profiled metal sheet roofing - colour to clients choice.

rev	date	description
A	09.5.14	General update to clients requirements

AKS ARCHITECTS & ENGINEERS
 P.O. Box 855, Gibraltar
 Tel: (+350) 20073260 Fax: (+350) 20074739 Email: mail@aks.gi

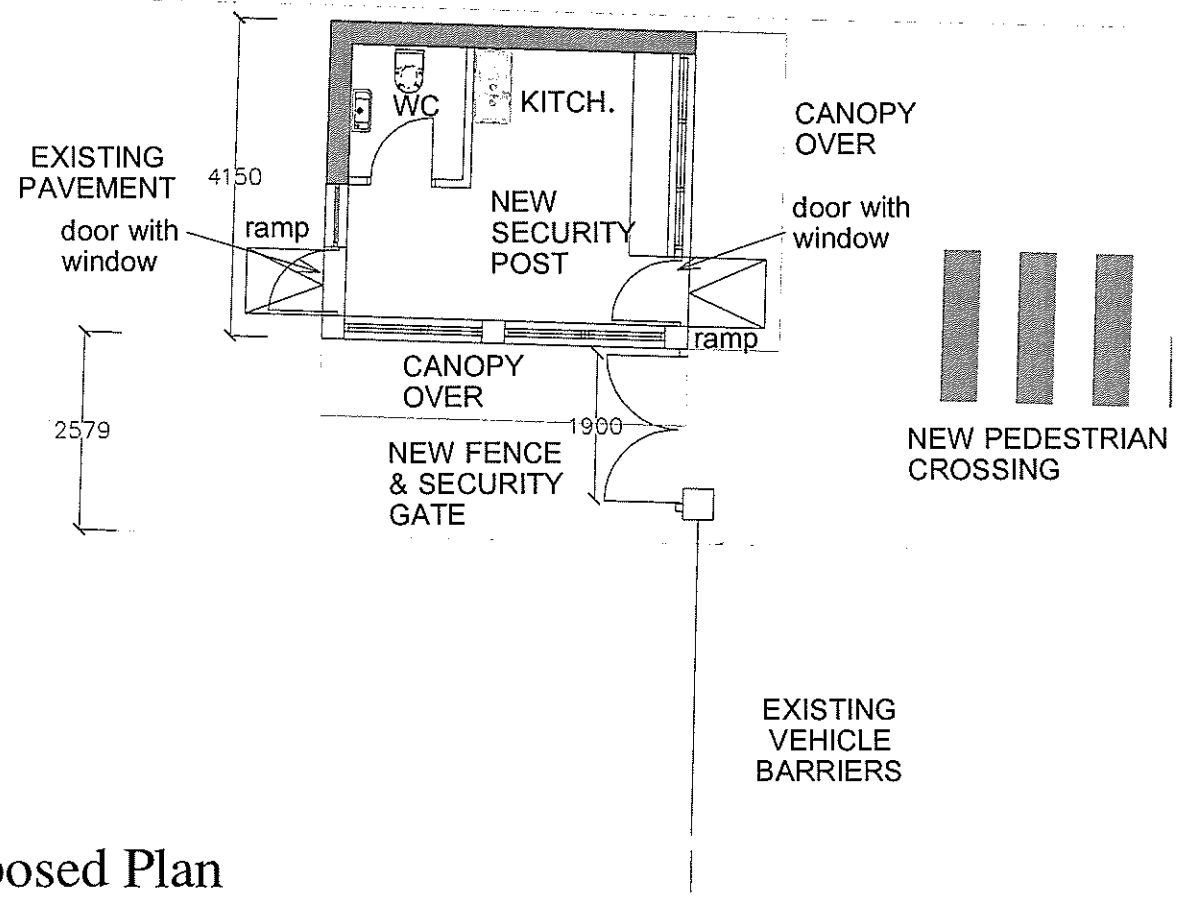
client: Government of Gibraltar

project: Gibraltar Port Restricted Area

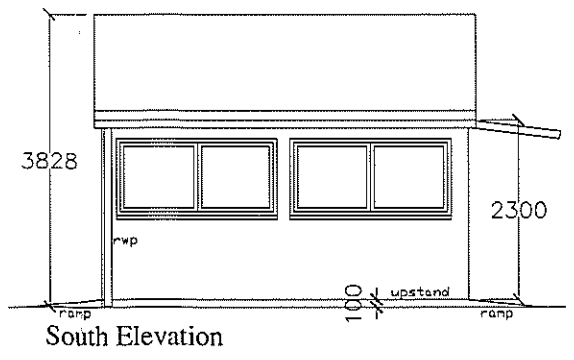
title: New Security Post - Main Entry Point

scale: 1:50@A1

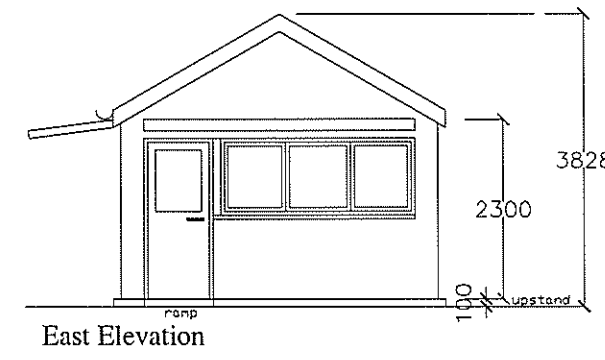
drw	EG	chk	DH
drawing no.	214014.113	rev.	A
		date	28.03.14



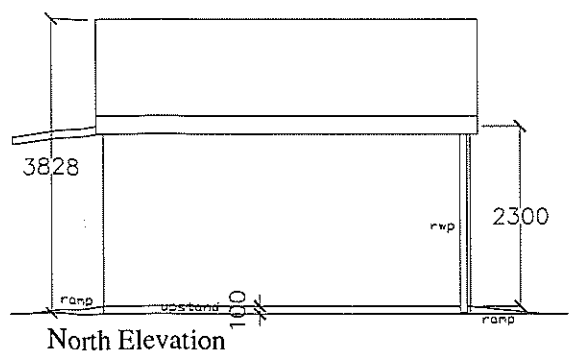
Proposed Plan



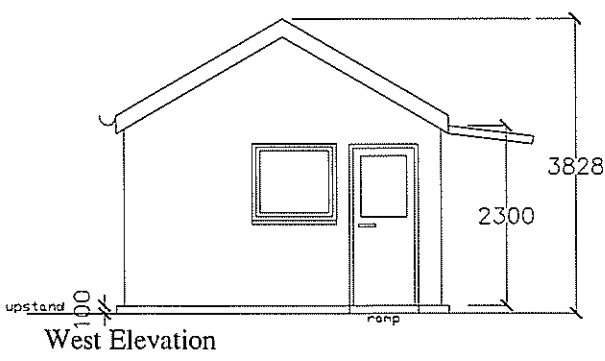
South Elevation



East Elevation



North Elevation

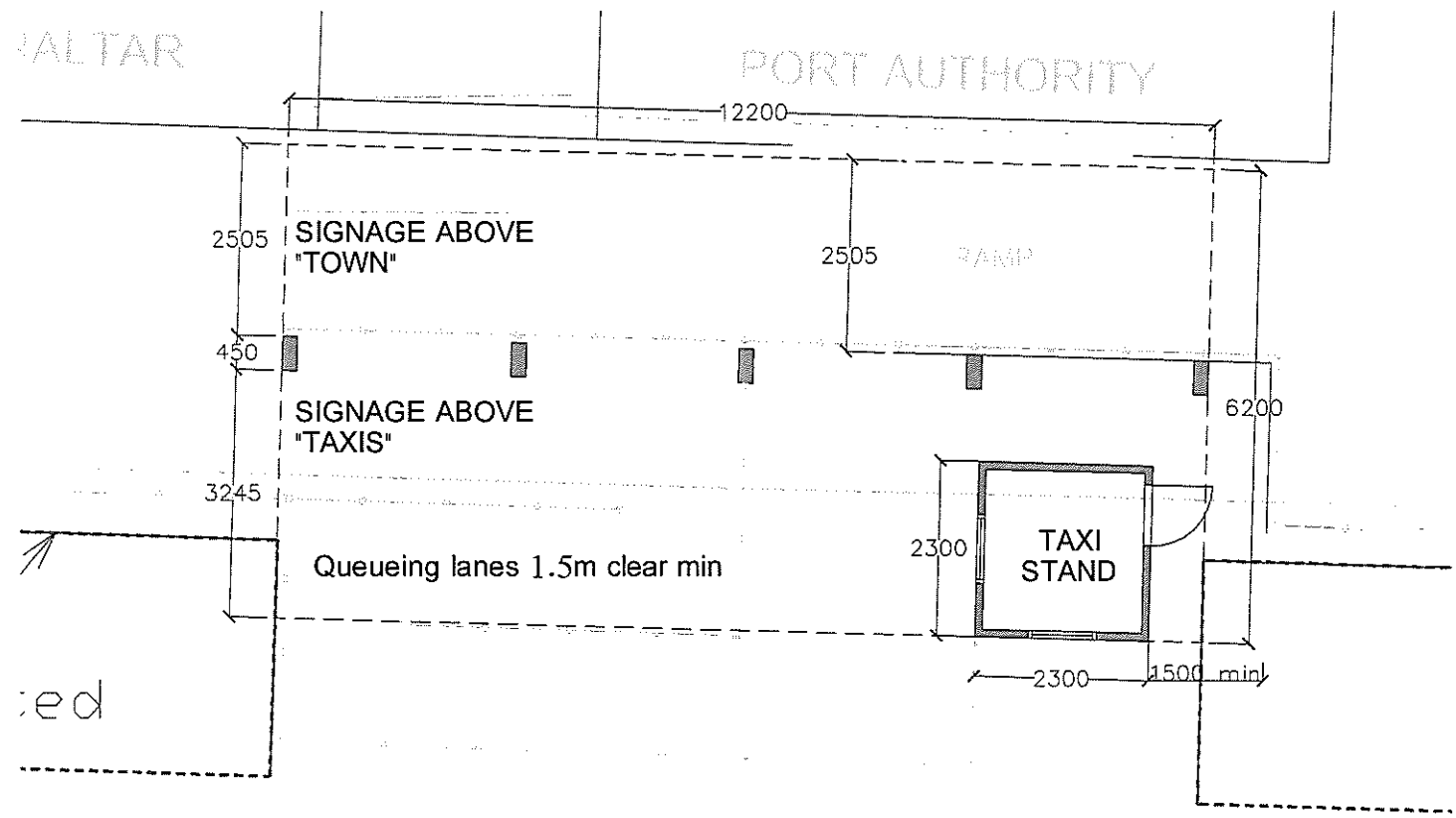


West Elevation

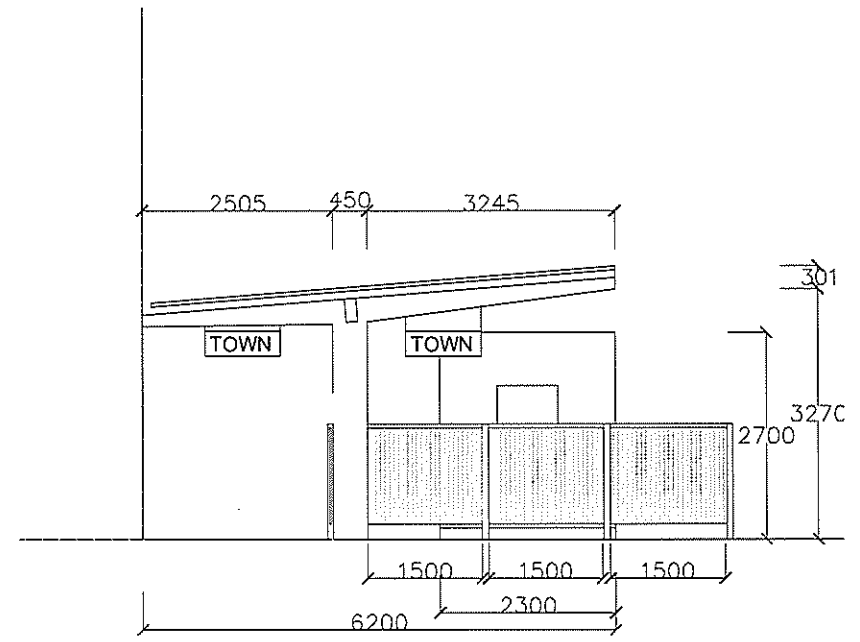
Proposed Elevations

EXISTING VEHICLE BARRIERS

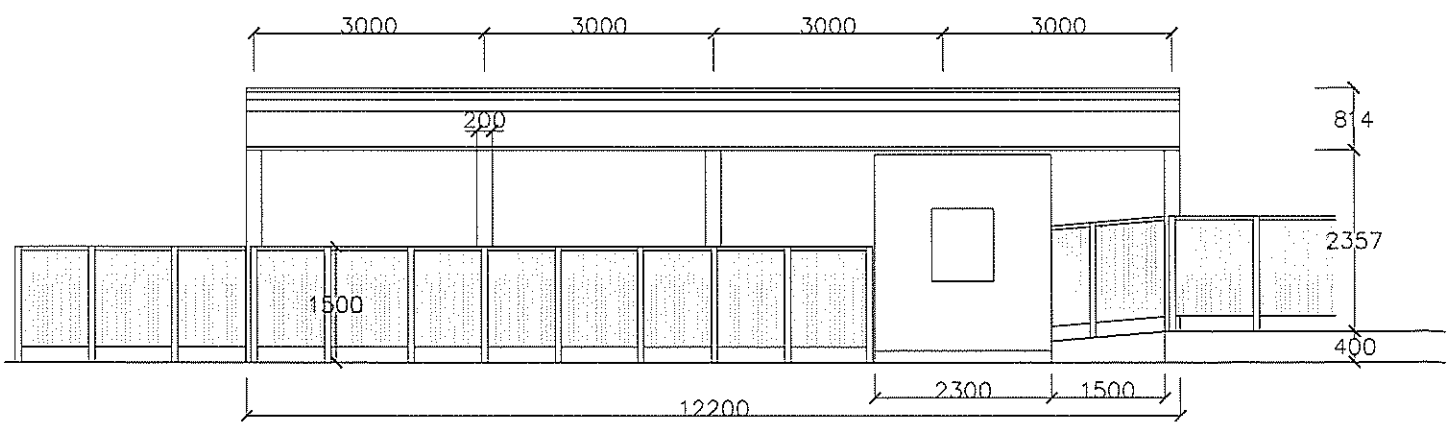
N



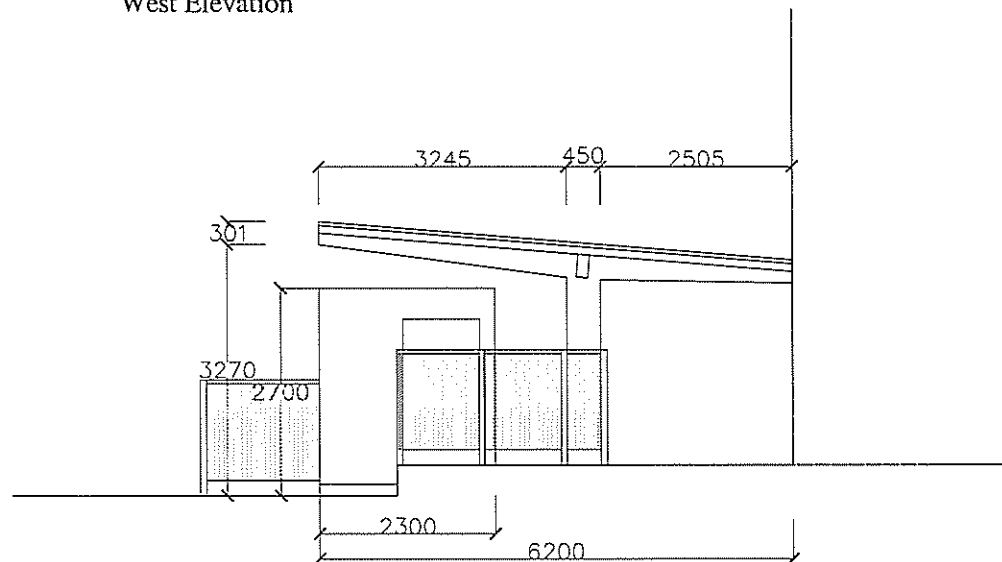
Plan



West Elevation



South Elevation




East Elevation

notes
 This drawing is the copyright and property of AKS Architects and Engineers Ltd. It must not be copied or published without written consent.
 Do not scale from this drawing.
 All dimensions to be checked on site.

KEY:
 - - - - - Movable stainless steel crowd control barrier
 - - - - - Stainless steel link chain
 ——— Security fencing (3m high unless stated otherwise) Ref. Expamet Super Security Fencing.
 - - - - - Stainless steel fixed barrier (1.5m high) by Olympic Products Ltd or similar

NOTES:
 New security kiosks to be made of rendered blockwork walls on a concrete foundation with a non-slip tiled floor finish, plasterboard walls and ceilings internally, and a timber framed insulated flat roof with a waterproof finish by Samafil or similar approved
 New canopy to be made of a galvanised painted steel structure with steel purlins and profiled metal sheet roofing - colour to clients choice.


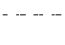


TOWN PLANNING & BUILDING CONTROL
 15 MAY 2014
RECEIVED

A	28.3.14	General update to clients requirements
rev	date	description
 AKS ARCHITECTS & ENGINEERS P.O. Box 855, Gibraltar Tel: (+350) 20073260 Fax: (+350) 20074739 Email: mail@aks.gi		
client	Government of Gibraltar	
project	Gibraltar Port Restricted Area	
title	Canopy Structure with taxi stand	
scale	1:50@A1	
drw	EG	chk DH
drawing no.	rev.	date
214014.112	A	28.02.14

N

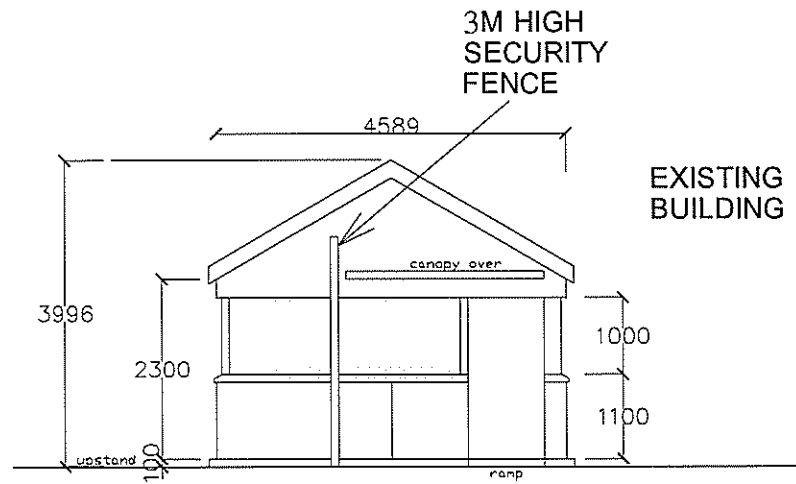
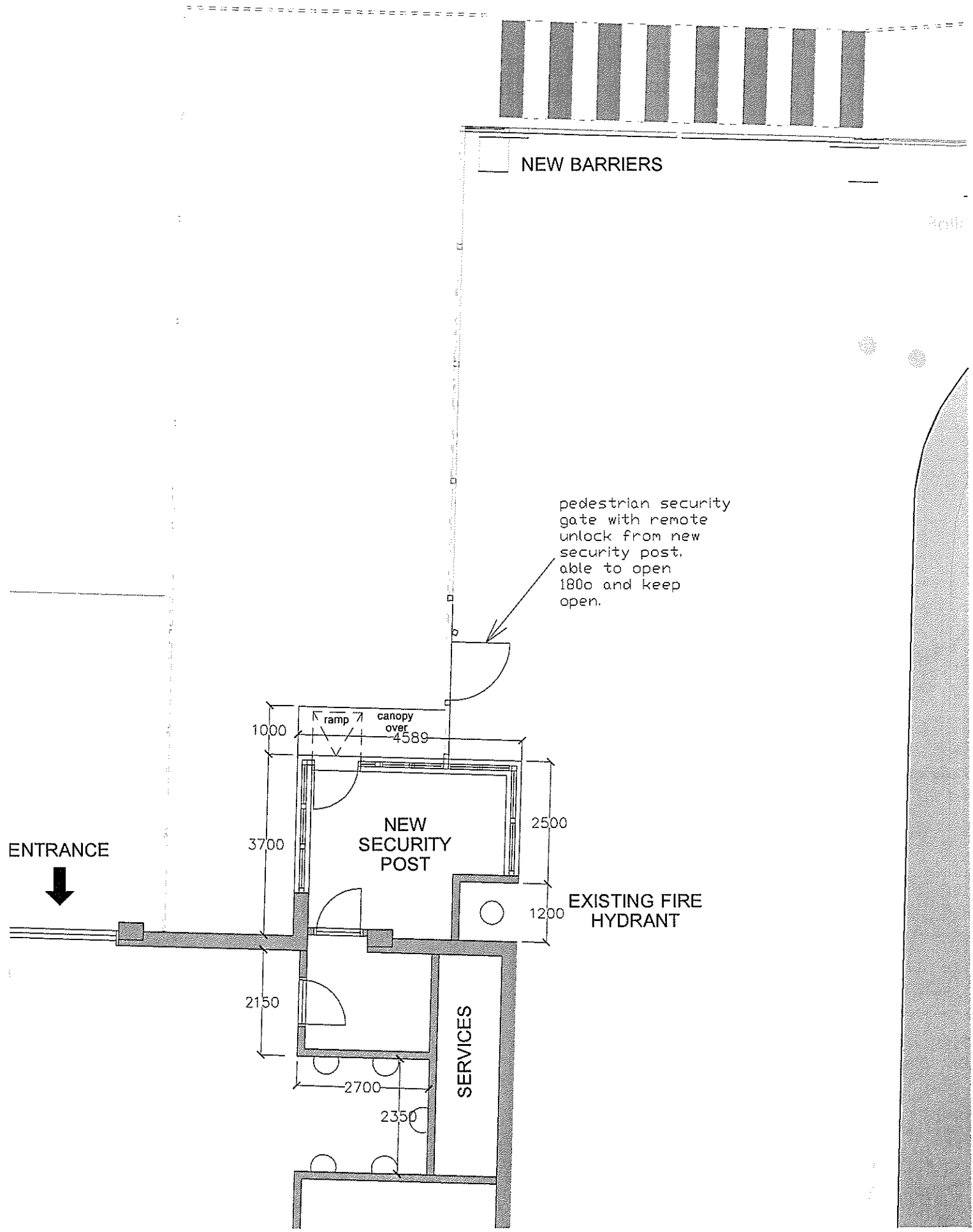
notes
This drawing is the copyright and property of AKS Architects and Engineers Ltd. It must not be copied or published without written consent.

Do not scale from this drawing.
All dimensions to be checked on site.

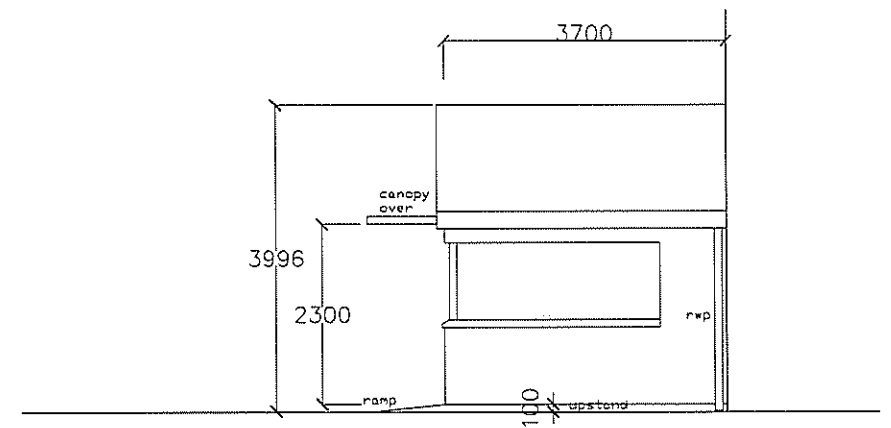
- KEY:
-  Movable stainless steel crowd control barrier
 -  Stainless steel link chain
 -  Security fencing (3m high unless stated otherwise) Ref. Expamet Super Security Fencing.
 -  Stainless steel fixed barrier (1,5m high) by Olympic Products Ltd or similar

NOTES:
New security kiosks to be made of rendered blockwork walls on a concrete foundation with a non-slip tiled floor finish, plasterboard walls and ceilings internally, and a timber framed insulated flat roof with a waterproof finish by Samafil or similar approved
New canopy to be made of a galvanised painted steel structure with steel purlins and profiled metal sheet roofing - colour to clients choice.

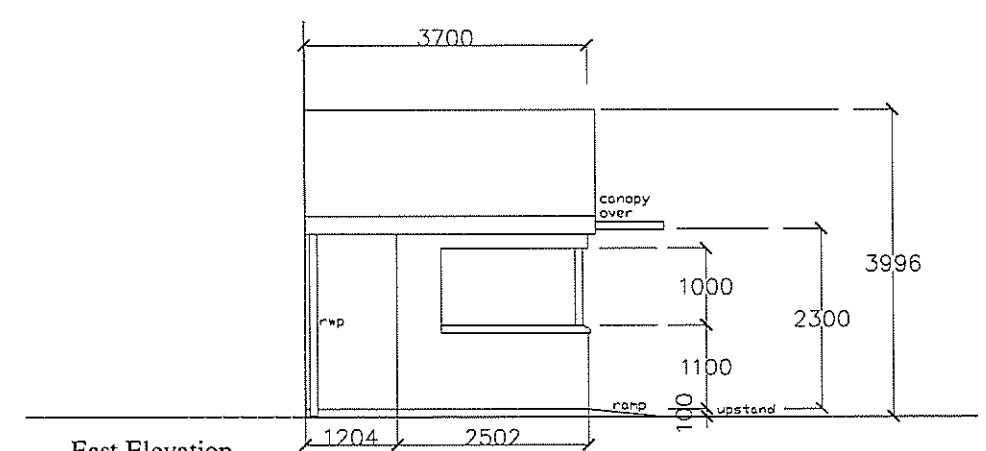
TOWN PLANNING AND BUILDING CONTROL
15 MAY 2014
RECEIVED



North Elevation



West Elevation



East Elevation

Plan

B 09.5.14 General update to clients requirements
A 28.3.14 General update to clients requirements

rev	date	description
B	09.5.14	General update to clients requirements
A	28.3.14	General update to clients requirements

AKS
ARCHITECTS & ENGINEERS
P.O. Box 855, Gibraltar

Tel: (+350) 20073260 Fax: (+350) 20074739 Email: mail@aks.gi

client
Government of Gibraltar

project
Gibraltar Port Restricted Area

title
New Security Post - Terminal Building

scale
1:50@A1

drw	EG	chk	DH
-----	----	-----	----

drawing no.	rev.	date
214014.111	B	28.02.14