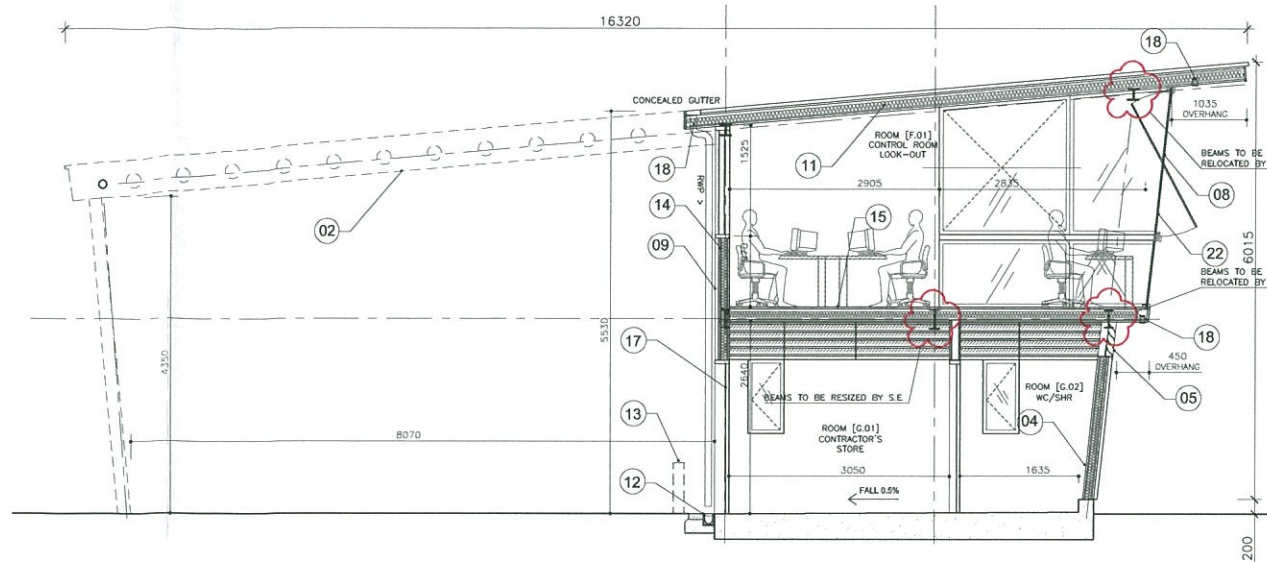
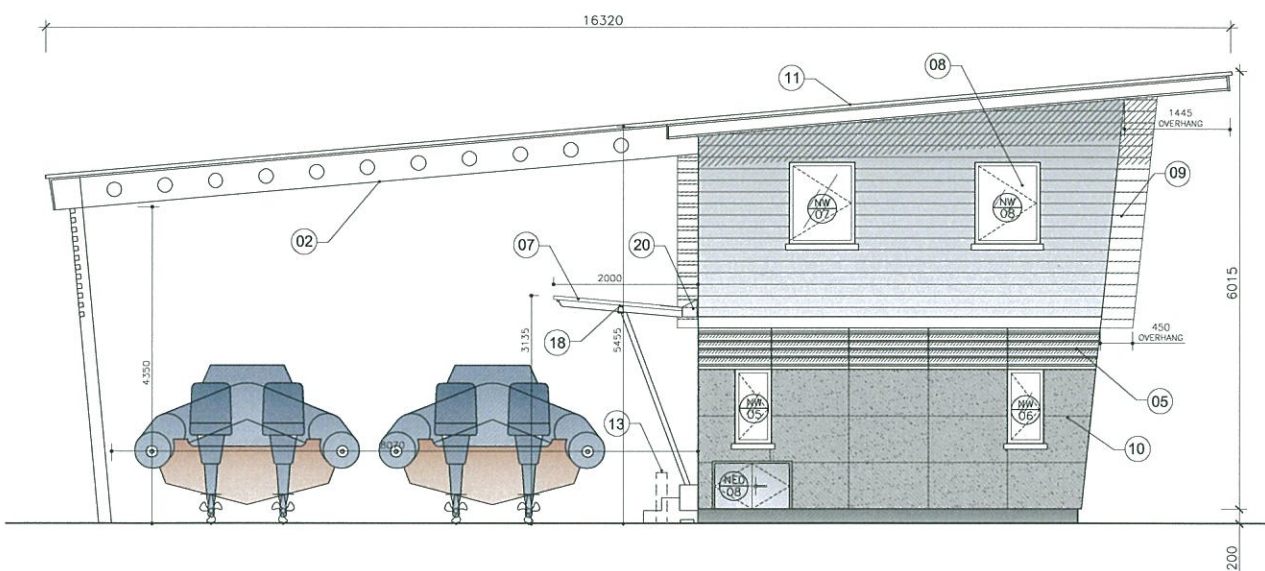


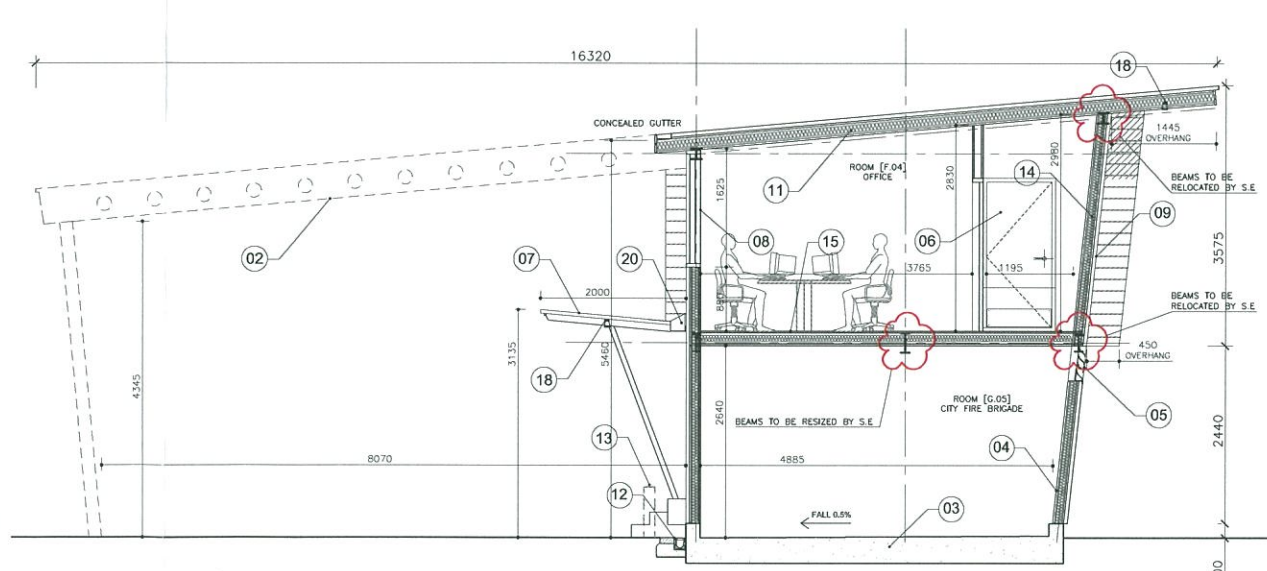
SOUTH ELEVATION



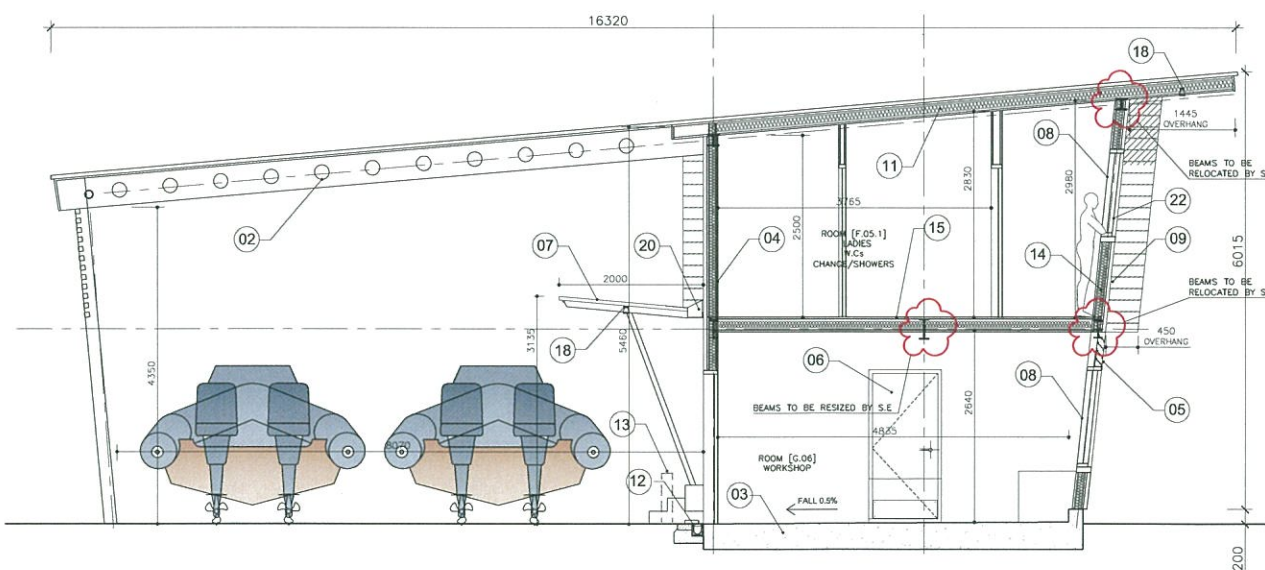
SECTION DD



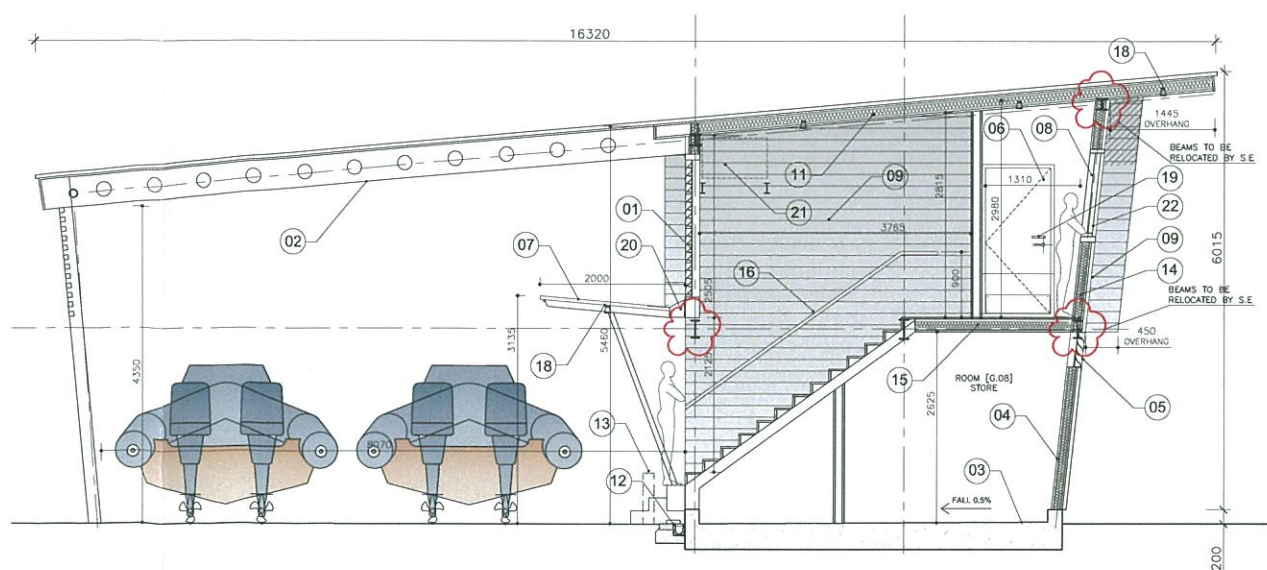
NORTH ELEVATION



SECTION CC



SECTION AA



SECTION BB

- NOTES:**
- DO NOT SCALE OFF THIS DRAWING. CHECK DIMENSIONS ON SITE PRIOR TO COMMENCEMENT. THIS DRAWING IS THE COPYRIGHT OF WSRM ARCHITECTS LTD. AND MUST NOT BE COPIED OR REPRODUCED, IN PART OR IN WHOLE, WITHOUT PERMISSION OF WSRM ARCHITECTS LTD. TO BE READ IN CONJUNCTION WITH OTHER RELEVANT CONSULTANTS INFORMATION.
- DRAWING NOTES:**
- ALUMINIUM POLYESTER POWDER COATED BRISE-SOLEIL INTEGRATED LOUVERED SYSTEM, AS TECHNICAL SUNAL OR SIMILAR APPROVED.
 - POSSIBLE ADDITIONAL MARINE GRADE GALVANISED STEEL LEAN TO COVERED STRUCTURE WITH ROOF COVERING TO MATCH MAIN BUILDING AND HIGH LEVEL ALUMINIUM LOUVERES TO EAST ELEVATION. THIS BUILDING ELEMENT COULD BE INTEGRATED AS PART OF BUILDING CONSTRUCTION OR POST FITTED.
 - NOMINAL 300MM THICK REINFORCED CONCRETE SLAB WITH 'UPTURNED' PERIMETER CONCRETE TOE OVER DPM TO STRUCTURAL OR SPECIALIST DESIGN DETAILS.
 - HIGH PERFORMANCE SELF FINISH INTERNAL BOARD LINING OR ADIA PANEL/MINERIT SPECIAL PERFORMANCE BOARD OR SIMILAR WITH SUITABLE APPLIED FINISH TO WC, SHOWERS AND WET AREAS. WORKSHOP AREAS MAY REQUIRE STRUCTURAL PLYWOOD LINING FOR FININGS AS REQUIRED. THERMAL/ ACOUSTIC INSULATION TOGETHER WITH VAPOUR BARRIERS AND DPM TO BE PROVIDED AS REQUIRED, TO ACHIEVE COMPLIANCE OR PERFORMANCE LEVELS STIPULATED IN THE EMPLOYER'S REQUIREMENTS DOCUMENT.
 - ALUMINIUM VENTILATION LOUVERES AS REVISION OR SIMILAR, RESISTANT TO STORM RAIN DRIVEN WATER PENETRATION AND INTEGRAL INSECT MESH WITHIN.
 - INTERNAL DOORS TO BE SOLID CORE LAMINATED DOORSETS, WITH FIT FOR PURPOSE IRONMONGERY AS PER SUPPLIERS RECOMMENDATIONS FOR INTENDED USE AND ENVIRONMENT.
 - LEAN TO MARINE GRADE GALVANISED STEEL CANOPY TO MATCH MAIN ROOF.
 - EXTERNAL WINDOWS AND DOORS TO BE EITHER PART OF THE PREFABRICATED PACKAGE OR PROPRIETARY THERMALLY BROKEN DOUBLE GLAZED ALUMINIUM SECTION WINDOWS AS TECHNICAL OR SIMILAR, WITH PLYWOOD FACED SOLID CORE EXTERNAL DOORS PAINTED IN SUITABLE MARINE QUALITY PAINT FINISH AS INTERNATIONAL PERFECTION 709 PAINT OR SIMILAR. CONTRACTOR TO SUBMIT QUALITY PREFERRED PROPOSAL WITH TENDER FOR PROJECT MANAGER'S APPROVAL. PROPOSED SYSTEMS TO BE DESIGNED AND SPECIFIED FOR THE KNOWN ENVIRONMENTAL CONDITIONS AND BUILDING PURPOSE.
 - HORIZONTAL WEATHERBOARDING TO BE GLASSFIBRE REINFORCED CONCRETE BOARDS AS OKO SKIN BY RYEDER OR SIMILAR, FIXED IN ACCORDANCE WITH SUPPLIERS RECOMMENDATIONS. FACTORY FINISH LIGHT GREY. CONTRACTOR TO SUBMIT AND QUALIFY PROPOSALS WITH TENDER FOR PROJECT MANAGER'S APPROVAL.
 - SELF FINISH HIGH PERFORMANCE EXTERNAL GLASSFIBRE REINFORCED CONCRETE CLADDING BOARDS AS FIBREX BY REDER OR SIMILAR. FACTORY FINISH DARK GREY. CONTRACTOR TO SUBMIT AND QUALIFY PROPOSALS WITH TENDER FOR PROJECT MANAGER'S APPROVAL.
 - SELF FINISH SINGLE PLY HIGH PERFORMANCE FULLY BONDED FELT AS SARNAFLOR OR SIMILAR APPROVED, OVER INSULATION AND TRADITIONAL PURLEIN AND PLYWOOD ROOF BUILD UP OR PROPRIETARY PREFABRICATED ROOF PANEL SYSTEM AS KINGSPAN KINCZP KS1000 STANDING SEAM ROOF.
 - LINEAR DRAINAGE CHANNEL TO M+E DESIGN.
 - GALVANISED STEEL PROTECTIVE BOLLARDS.
 - 150MM O/A VERTICAL EXTERNAL PANELS WITH INTEGRAL STRUCTURE, ACOUSTIC/ THERMAL INSULATION AS REQUIRED, DPM'S AND VAPOUR BARRIERS AS REQUIRED. EXTERNAL LINING/CLADDING, INTERNAL LINING/FINISH, SYSTEM/SUPPLIER TO BE AS PER CONTRACTOR'S PROPOSAL SUBJECT TO PROJECT MANAGER'S COMMENTS APPROVAL AND SUITABLE FOR INTENDED USE AND ENVIRONMENT.
 - 200MM O/A HORIZONTAL FLOOR ZONES WITH INTEGRAL STRUCTURE [DOWNSTAND BEAMS TO BE PROVIDED IF REQUIRED AT STRUCTURAL GRIDS INDICATED], ACOUSTIC/ THERMAL INSULATION AS REQUIRED, DPM'S AND VAPOUR BARRIERS [TO WET AND SHR AREAS] AS REQUIRED. EXTERNAL LINING/CLADDING, RUBBER OR NON-SLIP VINYL [NO] TO FLOOR AREAS ON UPPER LEVEL, OVER STRUCTURAL DECK. SYSTEM/ SUPPLIER TO BE AS PER CONTRACTOR'S PROPOSAL SUBJECT TO PROJECT MANAGER'S COMMENTS APPROVAL AND SUITABLE FOR INTENDED USE AND ENVIRONMENT.
 - ELONDO TIMBER HANDRAIL 100MM WIDE X 50MM DEEP (OVAL), MARINE GRADE STAINLESS STEEL CONNECTIONS.
 - EXTERNAL LOUVERED DOOR TO ALLOW CROSS VENTILATION AND DRYING.
 - OUTDOOR LED LIGHTS.
 - PROXIMITY KEYFOB ENTRY SYSTEM.
 - LINEAR STEEL GUTTER CHANNEL TO M+E DESIGN SPECIFICATIONS.
 - STRUCTURE FOR SALT WATER TANK.
 - ALL FIRST FLOOR WEST FACING WINDOWS TO BE GLAZED WITH REFLECTIVE GLASS + INTERNAL SOLAR DIM-OUT BLINDS, PROTECTED.

TENDER DOCUMENT

rev	date	amendments
A	16.10.13	SECTION SXXE UPDATED TO MATCH CHANGES IN LAYOUT PLANS REV A
B	23.10.13	NOTES ADDED

WSRM architects
 1.2.20 EUROTOWERS
 PO BOX 474
 GIBRALTAR
 Tel: (350) 200 74547
 Fax: (350) 200 74563
 Email: architects@wsrm.gi
 Web: www.wsrmltd.com

CLIENT
GOVERNMENT OF GIBRALTAR

PROJECT
PROPOSED NEW GIBRALTAR GOVERNMENT MARINE STATION

DRAWING TITLE
SOUTH AND NORTH ELEVATIONS SECTIONS A,B,C,D

SCALE	JOB + DRG REF No.	REV
1:50@A1	G453.1[3-005]0A-ELEV+ SX-50	B
DATE		
28.08.13		