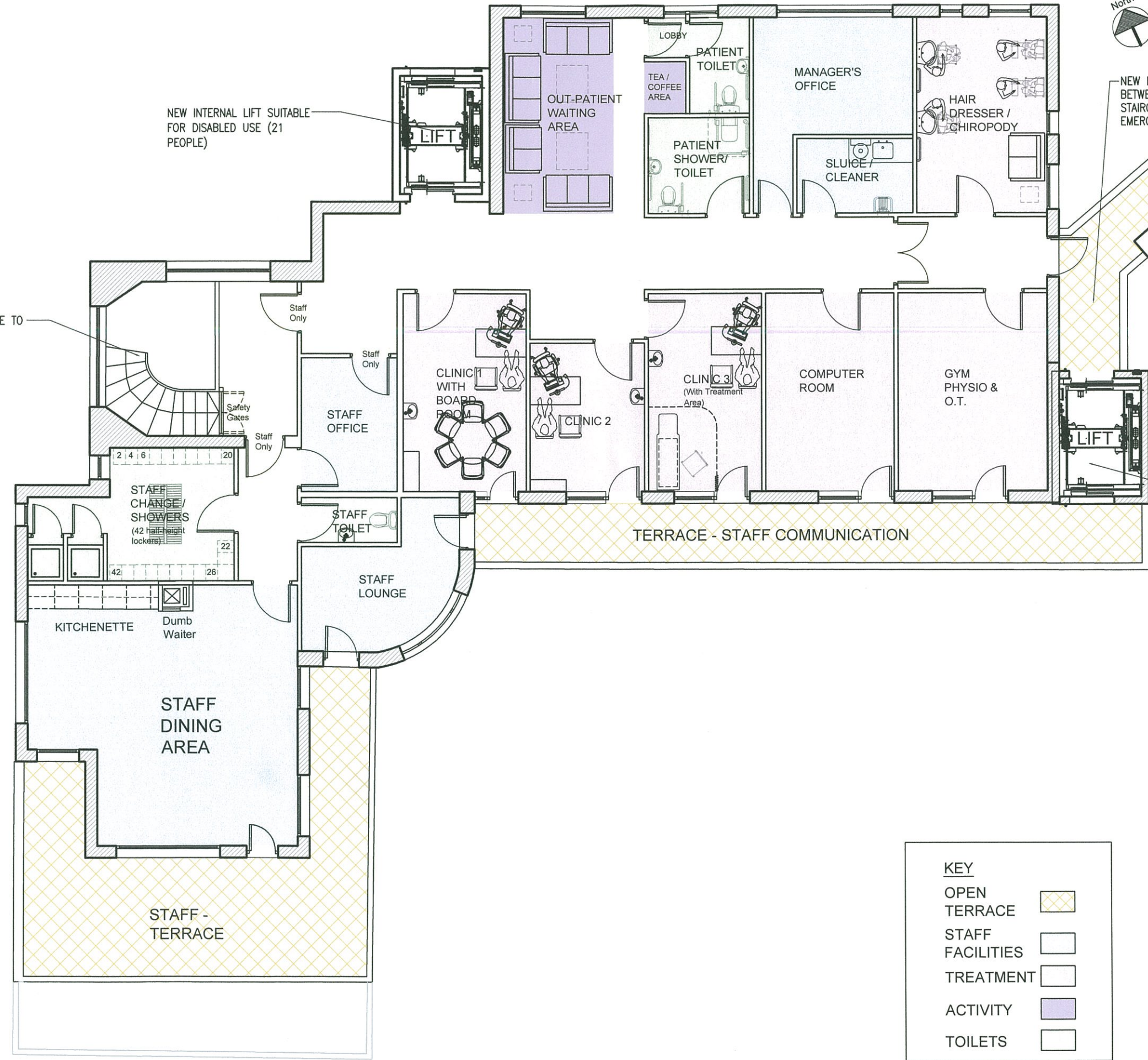


NOTES
 Do not scale from this drawing. Only figured dimensions are to be taken from this drawing.
 Contractor must verify all dimensions on site before commencing any work or shop drawings.
 Work within the Gibraltar Construction (Design & Management) Regulations is not to start until a Health and Safety Plan has been produced.
 This Drawing is Copyright and must not be reproduced without consent of GCArchitects.
 This drawing originates from the CAD file :
 Projects?
 Rev. Description Drawn Date Checked Date



EXISTING MAIN STAIRCASE TO BE EXTENDED TO NEW THIRD FLOOR

NEW INTERNAL LIFT SUITABLE FOR DISABLED USE (21 PEOPLE)

NEW LINK CORRIDOR BETWEEN EXTERNAL LIFT, STAIRCASE AND EMERGENCY EXIT

EXISTING EXTERNAL STAIRCASE TO BE EXTENDED TO NEW THIRD FLOOR

NEW EXTERNAL LIFT SUITABLE FOR DISABLED USE (21 PEOPLE)

KEY	
OPEN TERRACE	
STAFF FACILITIES	
TREATMENT	
ACTIVITY	
TOILETS	

FORMER ROYAL NAVAL HOSPITAL - BLOCK E
 PROPOSED DEMENTIA DAY CARE CENTRE - NEW THIRD FLOOR PLAN

GCArchitects, Gibraltar.
OUTLINE PLANNING
 Date: 18/12/12 Signed: JJC

GCArchitects

Members of the Royal Institute of British Architects
 GCArchitects Ltd., Suite 1, First Floor, 21 Horse Barrack Lane, GIBRALTAR
 T: (350) 20049550, F: (350) 20049501, E: info@gcarchitects.gi, W: www.gcarchitects.gi

PROJECT
 FORMER ROYAL NAVAL HOSPITAL
 DEMENTIA DAY CARE CENTRE
 BLOCK E

DRAWING TITLE
 PROPOSED
 NEW THIRD FLOOR PLAN

Scale	Drawn By	Checked By
1:50@A1	JOR	JJC
1/100@A3	Date Drawn 18/12/12	Date Checked 18/12/12

Drawing Status
 OUTLINE PLANNING
 DRAWING NO.
 09012/E/OP303