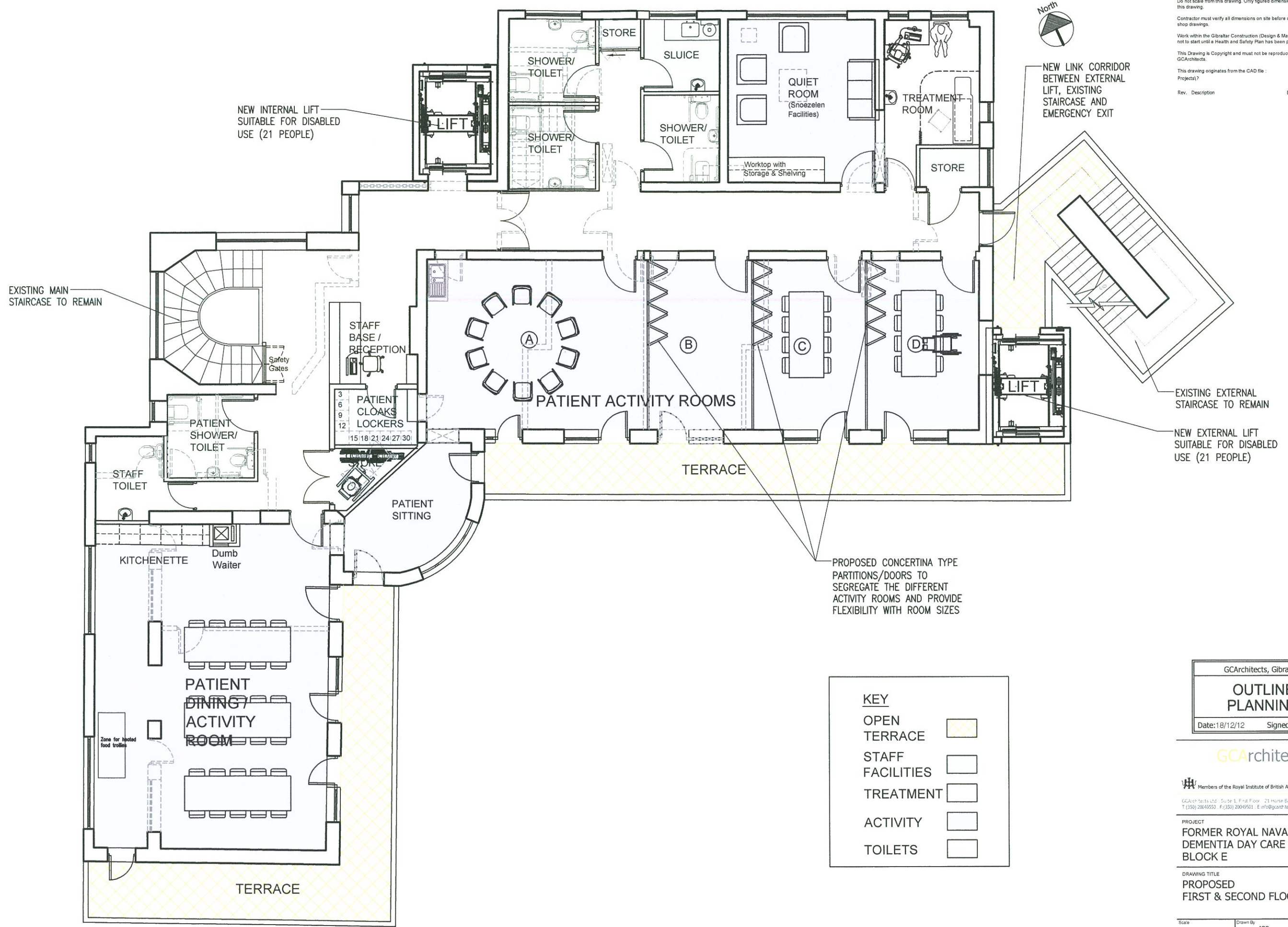


NOTES
 Do not scale from this drawing. Only figured dimensions are to be taken from this drawing.
 Contractor must verify all dimensions on site before commencing any work or shop drawings.
 Work within the Gibraltar Construction (Design & Management) Regulations is not to start until a Health and Safety Plan has been produced.
 This Drawing is Copyright and must not be reproduced without consent of GCArchitects.
 This drawing originates from the CAD file :
 Projects?
 Rev. Description Drawn Date Ch'ked Date



NEW INTERNAL LIFT
 SUITABLE FOR DISABLED
 USE (21 PEOPLE)

EXISTING MAIN
 STAIRCASE TO REMAIN

NEW LINK CORRIDOR
 BETWEEN EXTERNAL
 LIFT, EXISTING
 STAIRCASE AND
 EMERGENCY EXIT

EXISTING EXTERNAL
 STAIRCASE TO REMAIN

NEW EXTERNAL LIFT
 SUITABLE FOR DISABLED
 USE (21 PEOPLE)

PROPOSED CONCERTINA TYPE
 PARTITIONS/DOORS TO
 SEGREGATE THE DIFFERENT
 ACTIVITY ROOMS AND PROVIDE
 FLEXIBILITY WITH ROOM SIZES

KEY	
OPEN TERRACE	
STAFF FACILITIES	
TREATMENT	
ACTIVITY	
TOILETS	

GCArchitects, Gibraltar.
OUTLINE PLANNING
 Date: 18/12/12 Signed: JJC

GCArchitects

Members of the Royal Institute of British Architects
 GCArchitects Ltd, Suite 1, First Floor, 21 Horse Barrack Lane, GIBRALTAR
 T: (350) 2009552 F: (350) 2009501 E: info@gcarchitects.gi W: www.gcarchitects.gi

PROJECT
**FORMER ROYAL NAVAL HOSPITAL
 DEMENTIA DAY CARE CENTRE
 BLOCK E**

DRAWING TITLE
**PROPOSED
 FIRST & SECOND FLOOR PLANS**

Scale	Drawn By	Checked By
1:50@A1 1/100@A3	JOR	JJC
	Date Drawn	Date Checked
	18/12/12	18/12/12

Drawing Status
OUTLINE PLANNING
 DRAWING NO.
09012/E/OP302

**FORMER ROYAL NAVAL HOSPITAL - BLOCK E
 PROPOSED DEMENTIA DAY CARE CENTRE - FIRST & SECOND FLOOR PLANS**