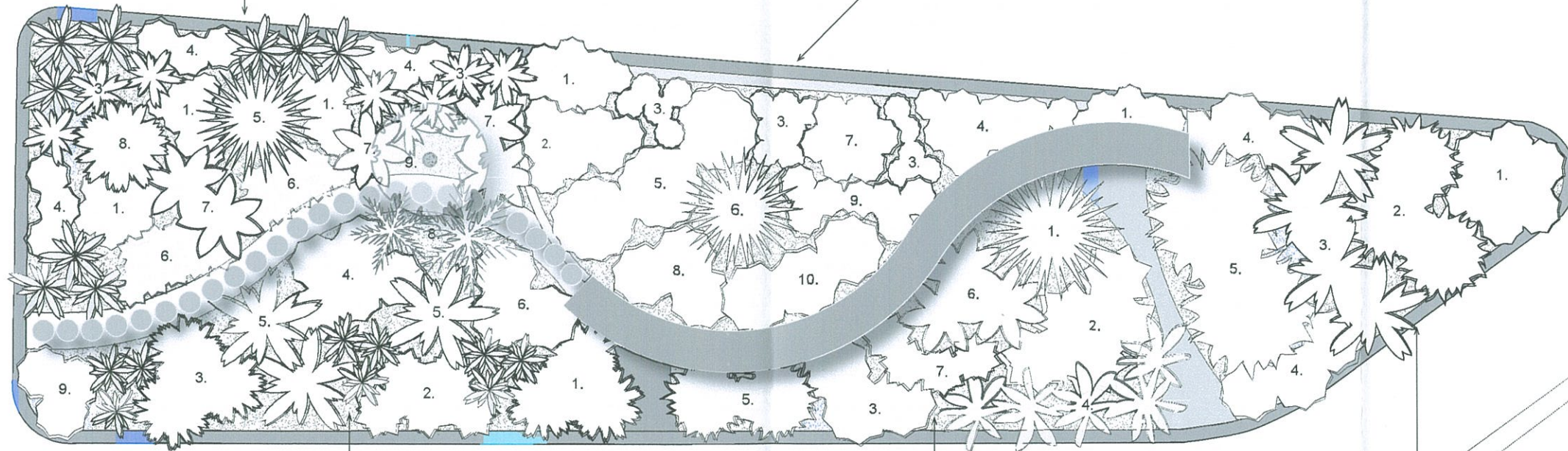


The Sensory Garden - Planting Plan



Sight		
1.	<i>Echinacea purpurea</i>	x21
2.	<i>Hemerocallis</i>	x9
3.	<i>Aechmea fasciata</i>	x8
4.	<i>Rhoeo discolor</i>	x15
5.	<i>Phormium tenax</i> 'Variegatum'	x1
6.	<i>Canna Indica</i>	x30
7.	<i>Aspidistra elatior</i>	x5
8.	<i>Lavandula Sp.</i>	x1
9.	<i>Plumeria pudica</i>	x1

Taste		
1.	<i>Rosmarinus officinalis</i> 'Prostratus'	x9
2.	<i>Origanum vulgare</i>	x8
3.	<i>Tropaeolum majus</i>	x17
4.	<i>Fragaria vesca</i>	x9
5.	<i>Salvia officinalis</i> 'Purpurascens'	x3
6.	<i>Cymbopogon citratus</i>	x1
7.	<i>Lactuca sativa</i> 'Avondefiance'	x6
8.	<i>Foeniculum vulgare</i> 'Purpureum'	x3
9.	<i>Mentha</i>	x7
10.	<i>Capsicum annuum</i> 'Grossum Group' (Sweet Pepper)	x3



Smell		
1.	<i>Lavandula sp.</i>	x3
2.	<i>Pelargonium citronellum</i>	x5
3.	<i>Helicrysum halicum</i>	x3
4.	<i>Nepeta cataria</i> 'Citriodora'	x5
5.	<i>Dryopteris filix-mas</i>	x3
6.	<i>Foeniculum vulgare</i> 'Purpureum'	x3
7.	<i>Lilium</i>	x9
8.	<i>Yucca</i>	x1
9.	<i>Salvia officinalis</i> 'Purpuracens'	x3

Touch		
1.	<i>Phormium tenax</i> 'Atropurpureum'	x1
2.	<i>Codiaeum</i> 'Flamingo'	x5
3.	<i>Stachys byzantina</i> / <i>lanata</i>	x3
4.	<i>Asparagus densiflorus</i> 'Myersii'	x5
5.	<i>Pennisetum alopecuroides</i>	x2
6.	<i>Aspidistra elatior</i>	x3
7.	<i>Eryngium bourgatii</i>	x4

Sound		
1.	<i>Agapanthus</i>	x7
2.	<i>Pennisetum alopecuroides</i>	x3
3.	<i>Arundinaria</i>	x4
4.	<i>Russelia equisetiformis</i>	x6
5.	<i>Stipa gigantea</i>	x2



A scale of measure in metres: 1:50



Harriet Rose Design
 Drawn by: ADonohoe, 12/02/2012
 1 Little Genoa, Catalan Bay, Gibraltar
 M: 00350 54013313
 E: donohoeandrea@yahoo.com



Horticultural Contractors
 Convent Garden
 Convent Ramp
 Gibraltar
 T: 200 43134