

notes

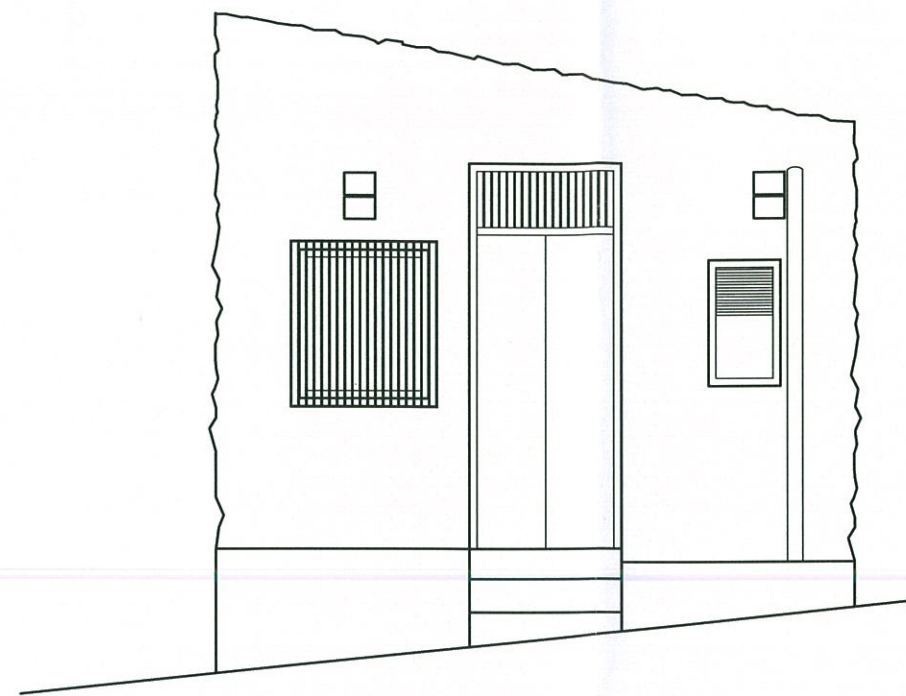
This drawing is the copyright and property of AKS Architects and Engineers Ltd. It must not be copied or published without written consent.

Do not scale from this drawing.

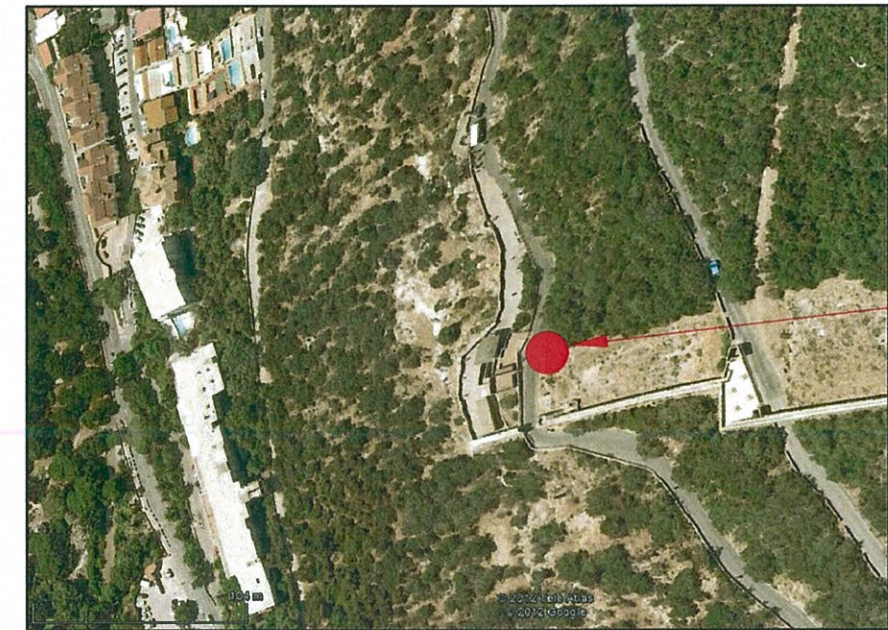
All dimensions to be checked on site.



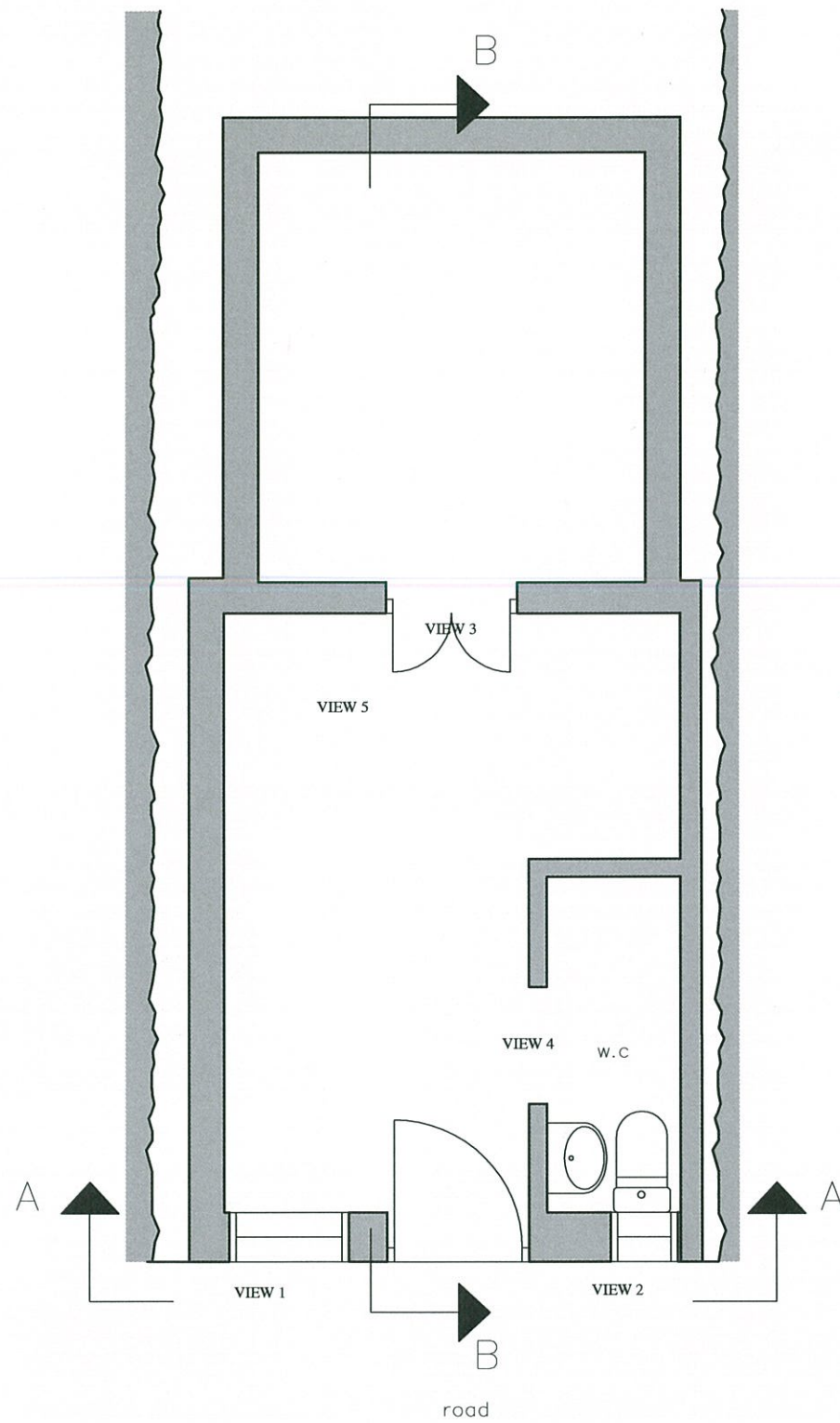
N



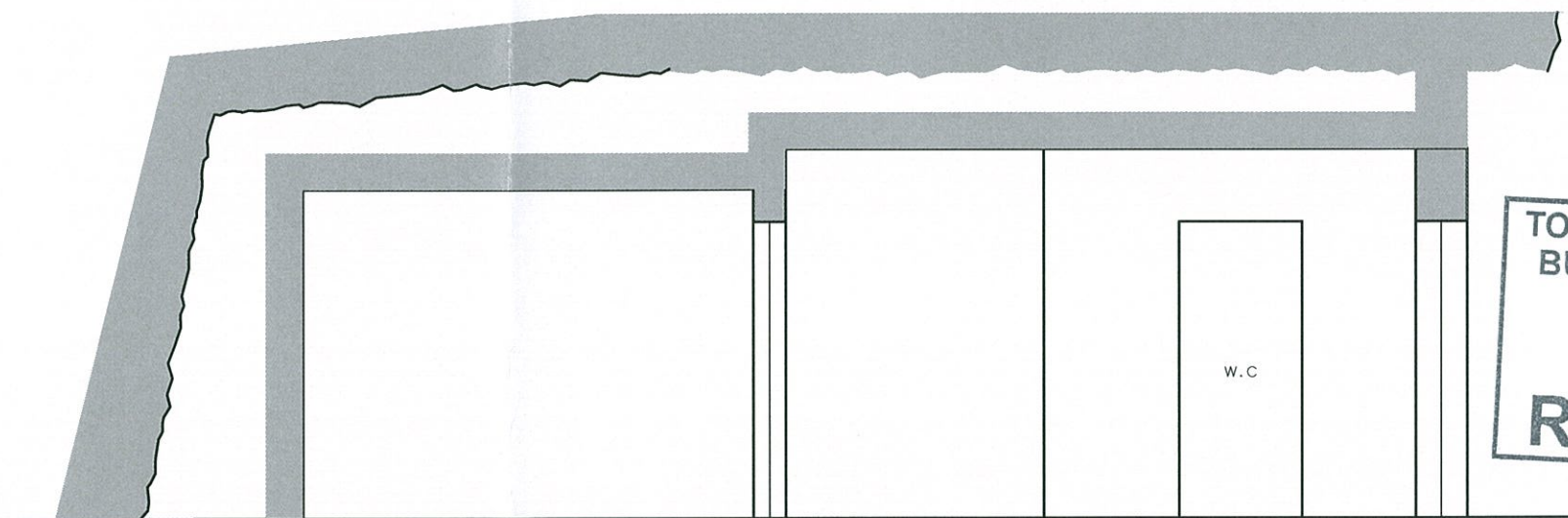
ELEVATION A-A



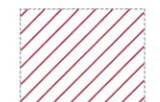
APES DEN



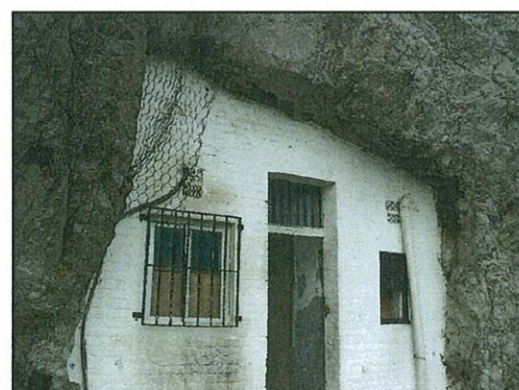
EXISTING PLAN



SECTION B-B



to be demolished



VIEW 1



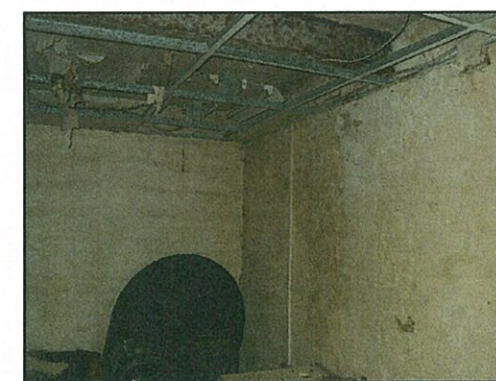
VIEW 2




VIEW 3



VIEW 4



VIEW 5

rev	date	description
 AKS ARCHITECTS & ENGINEERS P.O. Box 855, Gibraltar Tel: (+350) 20073260 Fax: (+350) 20074739 Email: mail@aks.gi		
client		
TOURIST BOARD		
project		
APES DEN		
title		
EXISTING PLAN, ELEVATION & SECTION		
scale		
1:25@A1		
drw	TE	chk DH
drawing no.	A212087.210	rev. date
		9.11.12