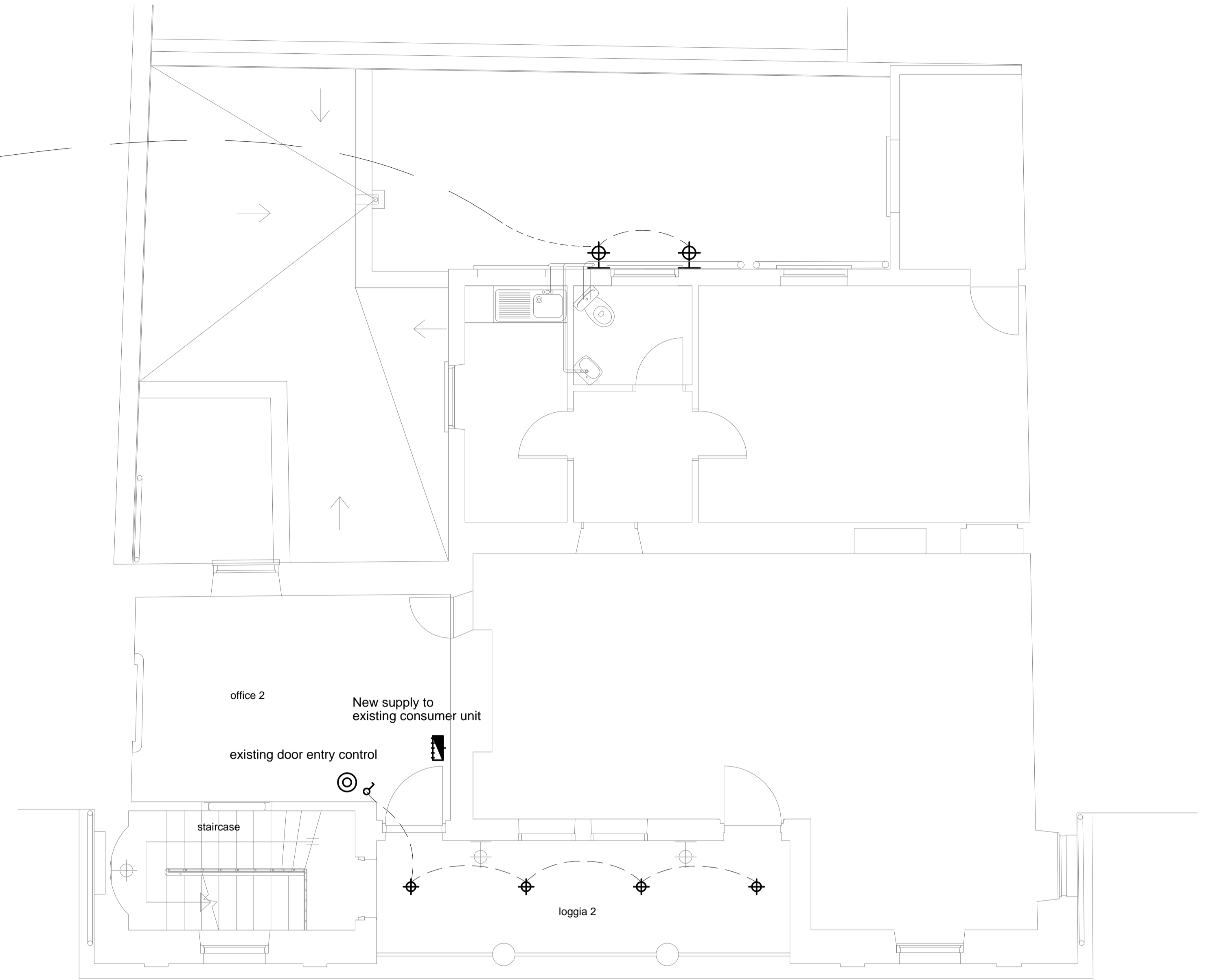


Ground Floor Plan



First Floor Plan

Electrical installation
 The electrical installation is to be carried out in twin and earth cable chased into walls and ceilings. The installation must comply with the IEE Wiring Regulations 16th Edition (BS 7671/92).
 Switches and sockets to be white plastic. Provide all information necessary to the Electricity Department plans, circuits certificates etc. Reg 514.09 refers.

Automatic fire alarm/detection system
 Provide and install an automatic fire alarm/detection system to comply with BS. 5839: Part 1:2002.

Emergency lighting
 Provide and install an emergency lighting system to comply with BS. 5266: Part 1:1999

Exit/emergency exit signs
 Provide and install exit/emergency exit signs. to comply with BS. 5499: Part 1 or EU directive 92/58/ EEC

KEY

- Meter
- Consumer unit
- Water heater
- Cooker control unit
- Extractor fan
- Flex outlet
- 13A double socket outlet
- 5A single socket outlet
- recessed down lighters

- Centre ceiling light
- Emergency pack wall mounted light
- Double pole switch
- Switch
- Commuter switch
- Dimmer switch
- Telephone
- door entry control
- TV aerial

The Main Guard
 13, John Mackintosh Square,
 Headquarters for
 the Gibraltar Heritage Trust
Drg No 25
 Electrical Layout
 Floor Plans
 scale 1: 50 date May 2007
 J. S. Langdon BArch.