

notes

This drawing is the copyright and property of AKS Architects and Engineers Ltd. It must not be copied or published without written consent.

Do not scale from this drawing.

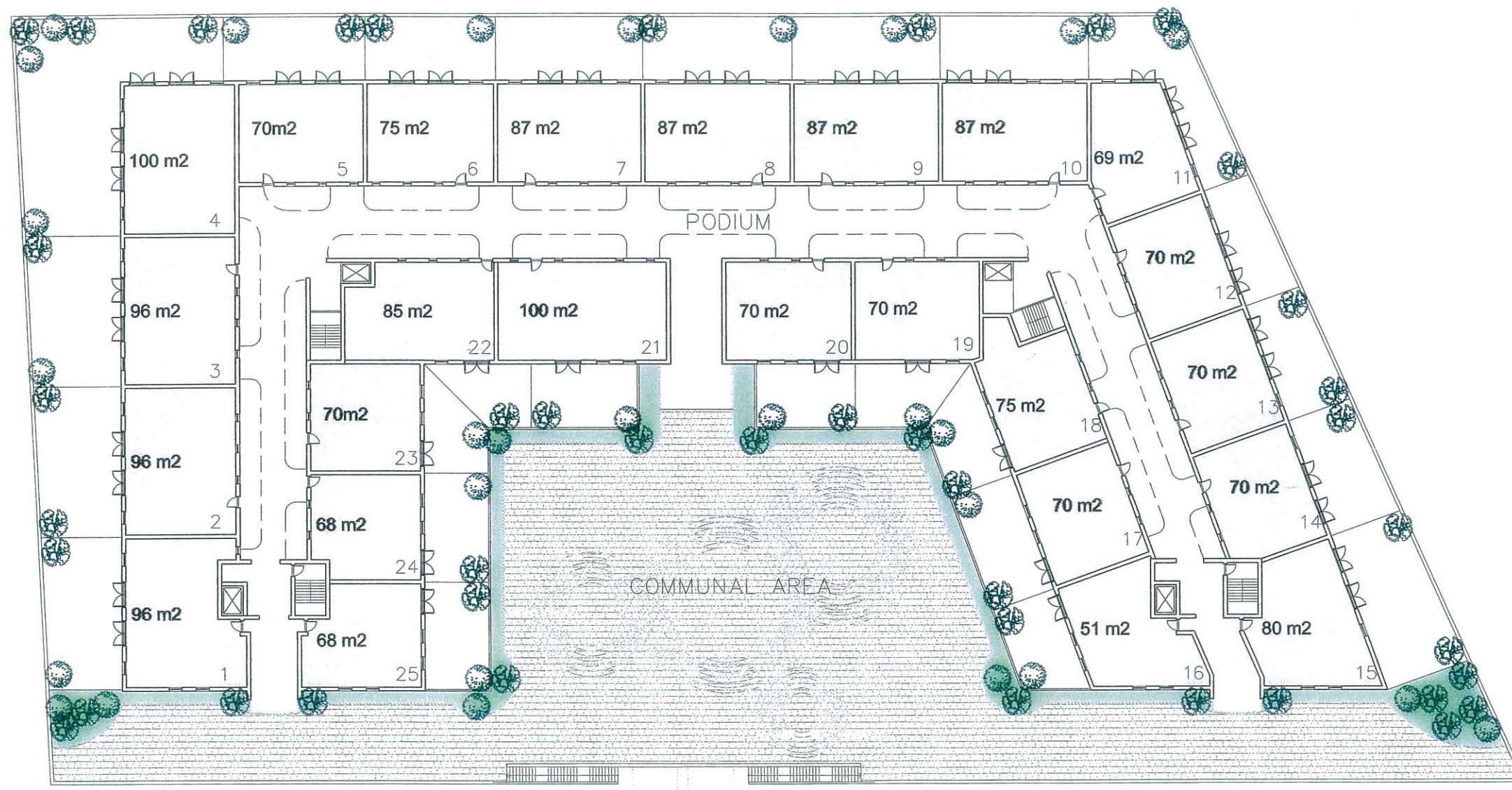
All dimensions to be checked on site.

SURFACE AREAS

Apartment 1967 m²
 Circulation 798 m²
 Terraces 1416 m²
 Communal 1326 m²

25 Apartments

1 no. 1 Bedroom
 1 no. 2 Bedroom
 10 no. 3 Bedroom
 13 no. 4-5 Bedroom



B 05/07/12 number of apartments updated

rev	date	description
B	05/07/12	number of apartments updated

AKS
 ARCHITECTS
 & ENGINEERS
 P.O. Box 855, Gibraltar

Tel: (+350) 20073260 Fax: (+350) 20074739 Email: mail@aks.gi

client
 Name
 Address

project
 Ariel Farm
 Housing Development

title
 Podium Level Plan

scale
 1:200@A1

drw BG chk DHI

drawing no.	rev.	date
A212045.SE4	B	06.06.12