

notes

This drawing is the copyright and property of AKS Architects and Engineers Ltd. It must not be copied or published without written consent.

Do not scale from this drawing.

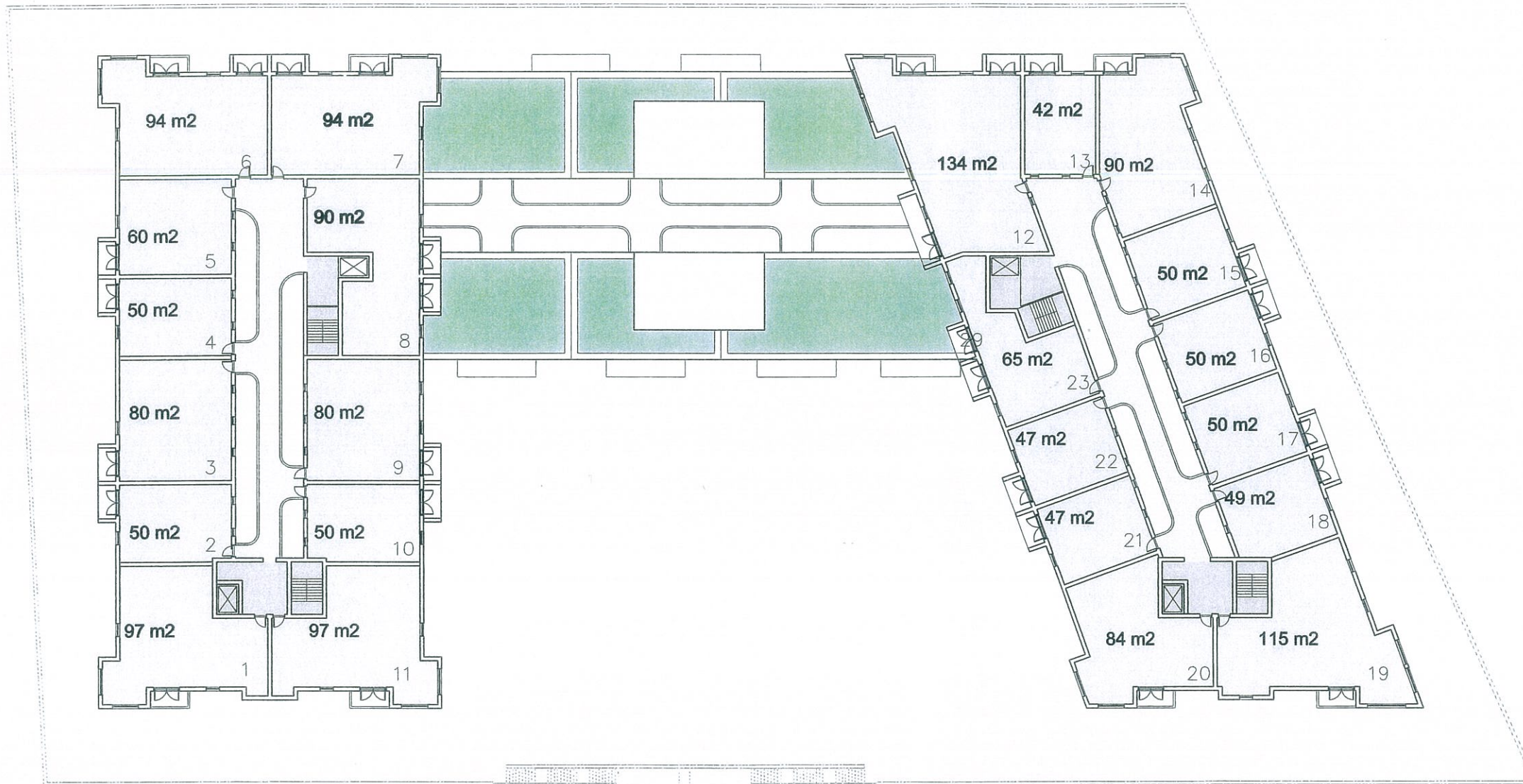
All dimensions to be checked on site.

**SURFACE AREAS**


Apartment 842 m<sup>2</sup>  
Circulation 122 m<sup>2</sup>

**23 Apartments**

- 10 no. 1 Bedroom
- 2 no. 2 Bedroom
- 2 no. 3 Bedroom
- 9 no. 4-5 Bedroom



6th to 11th Floor Plan

rev	date	description
 <p><b>AKS ARCHITECTS &amp; ENGINEERS</b> P.O. Box 855, Gibraltar Tel: (+350) 20073260 Fax: (+350) 20074739 Email: mail@aks.gi</p>		
<b>client</b>		
Name Address		
<b>project</b>		
Ariol Farm Housing Development		
<b>title</b>		
6th to 11th Floor Plan		
<b>scale</b>		
1:200@A1		
<b>drw</b>	EG	<b>chk</b> DH
<b>drawing no.</b>	A212045.SK13	<b>rev.</b> A <b>date</b> 06.06.12