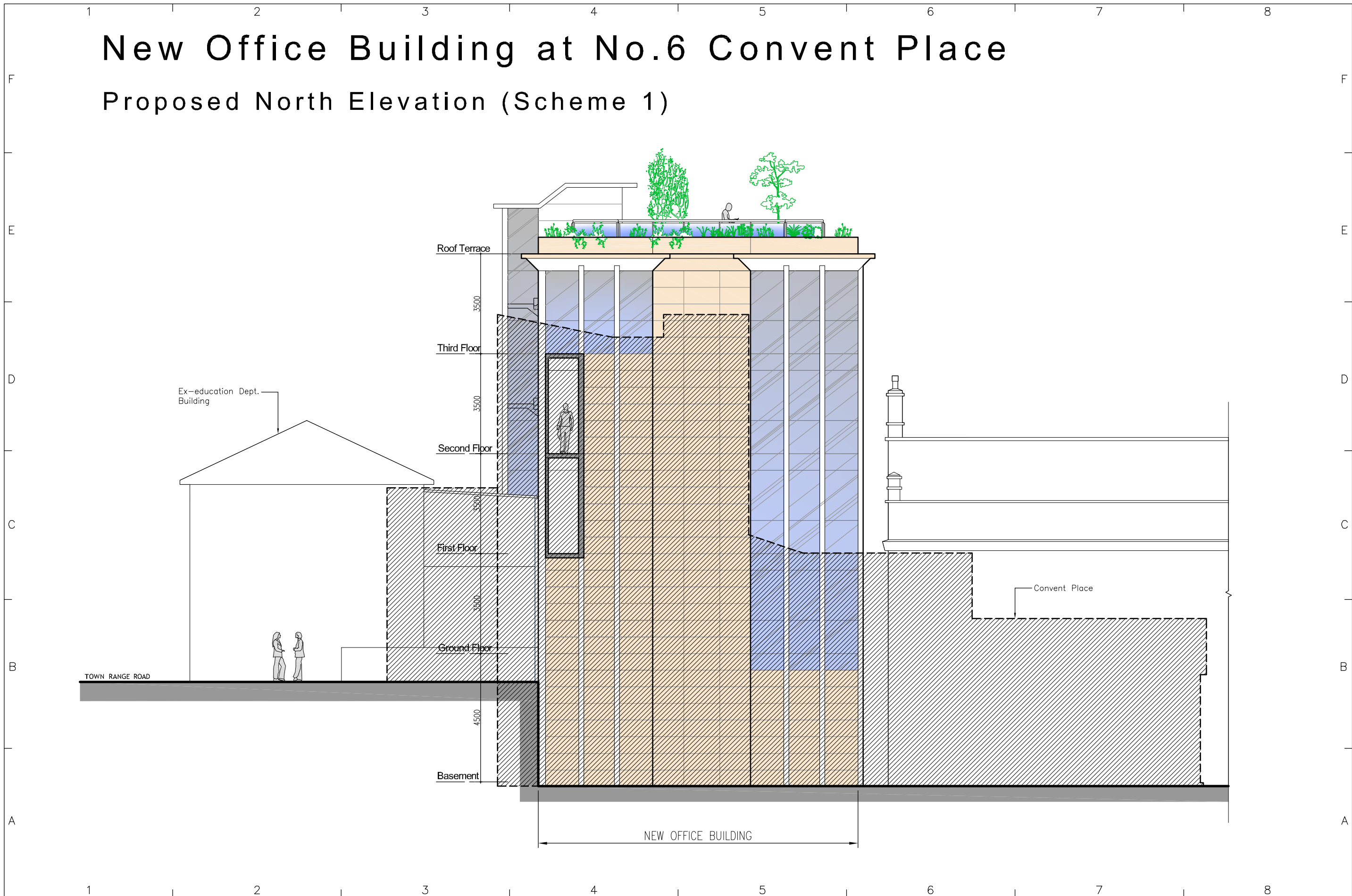


New Office Building at No.6 Convent Place

Proposed North Elevation (Scheme 1)



D.M.Orfila Associates
 CHARTERED ARCHITECTS
 21 Horse Barrack Lane
 Suite No.1
 Gibraltar
 Tel:(350) 20040056 email: davidorfila@yahoo.co.uk

Client
Rison Ltd.
 Written dimensions on these drawings shall take precedence over scaled dimensions. Contractors shall verify and be responsible for all dimensions and conditions on the project and this office must be notified of any variations from the dimensions and conditions shown on these drawings prior to commencement of any works. All contractors are deemed to have made themselves aware of site conditions prior to entering into any contract. This drawing is the property of D.M.Orfila Associates. Copyright is reserved by them and the drawing is issued on condition that it is not copied, reproduced, retained or disclosed to any unauthorised person, either wholly or in part without the consent in writing by D.M.Orfila Associates.

Rev	Description	Date

Project Name
New Office Building at No.6 Convent Place

Drawing Title
Proposed North Elevation (Scheme 1)
Project Number
96
Date Drawn
Oct. 12

<i>Scale</i>	1:125
<i>Drawn by</i>	DO
<i>Checked by</i>	DO
<i>Drawing Number</i>	PR96-D-7
<i>Revision</i>	