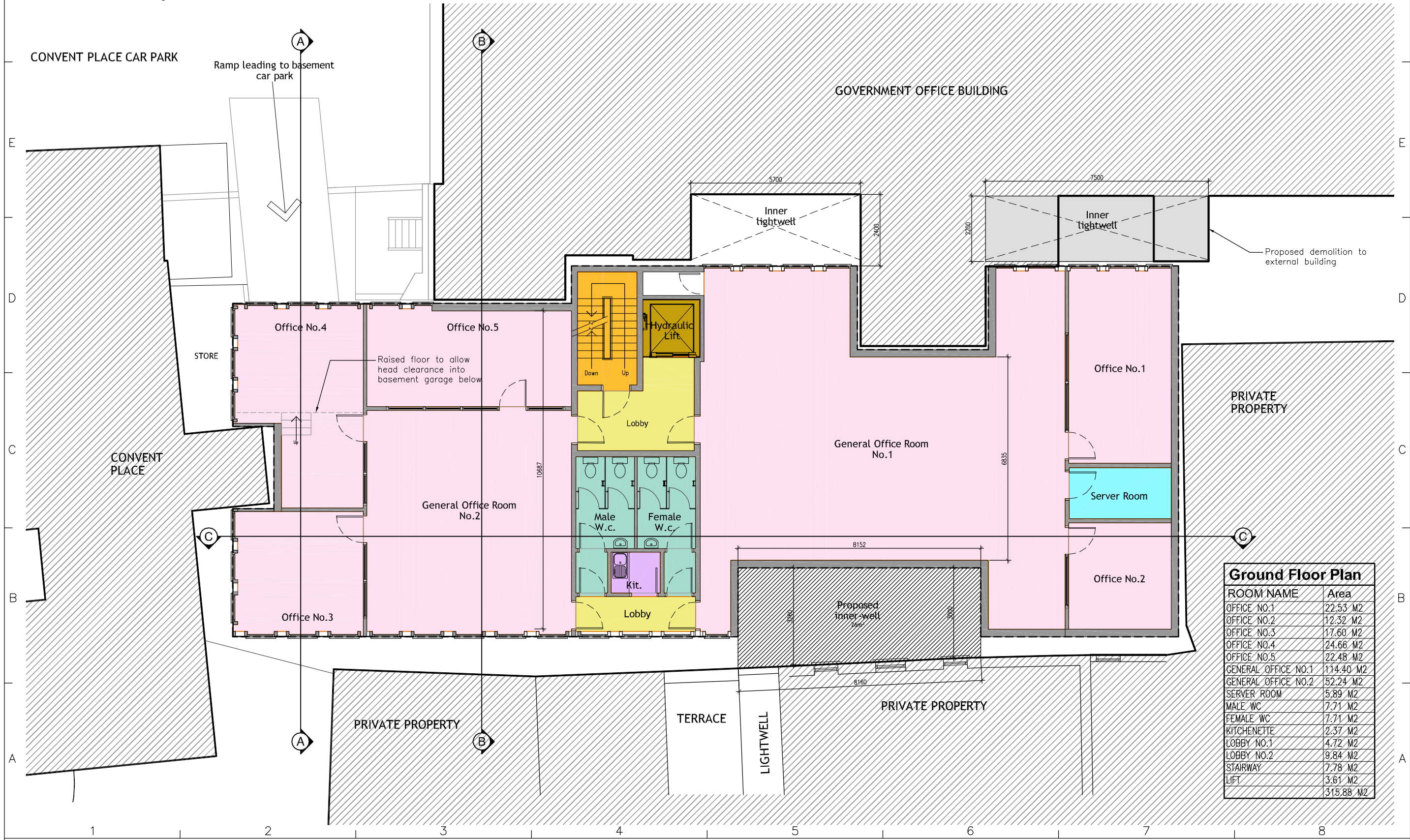


# New Office Building at No.6 Convent Place

## Proposed Ground Floor Plan



Ground Floor Plan	
ROOM NAME	Area
OFFICE NO.1	22.53 M2
OFFICE NO.2	12.32 M2
OFFICE NO.3	17.60 M2
OFFICE NO.4	24.66 M2
OFFICE NO.5	22.48 M2
GENERAL OFFICE NO.1	114.40 M2
GENERAL OFFICE NO.2	52.24 M2
SERVER ROOM	5.89 M2
MALE WC	7.71 M2
FEMALE WC	7.71 M2
KITCHENETTE	2.37 M2
LOBBY NO.1	4.72 M2
LOBBY NO.2	9.84 M2
STAIRWAY	7.78 M2
LIFT	3.61 M2
	315.88 M2

**D.M.Orfila Associates**  
CHARTERED ARCHITECTS

Client

**Rison Ltd.**

21 Horse Barrack Lane  
Suite No.1  
Gibraltar

Tel:(350) 20040056 email: davidorfila@yahoo.co.uk



Written dimensions on these drawings shall take precedence over scaled dimensions. Contractors shall verify and be responsible for all dimensions and conditions on the project and this office must be notified of any variations from the dimensions and conditions shown on these drawings prior to commencement of any works. All contractors are deemed to have made themselves aware of site conditions prior to entering into any contract. This drawing is the property of D.M.Orfila Associates. Copyright is reserved by them and the drawing is issued on condition that it is not copied, reproduced, retained or disclosed to any unauthorised person, either wholly or in part without the consent in writing by D.M.Orfila Associates.

Rev	Description	Date

Project Name

**New Office Building  
at No.6 Convent Place**

Drawing Title

**Proposed Ground  
Floor Plan**

Project Number

**96**

Date Drawn

**Oct. 12**

Scale

**1:125**

Drawn by

**DO**

Checked by

**DO**

Drawing Number

**PR96-D-3**

Revision