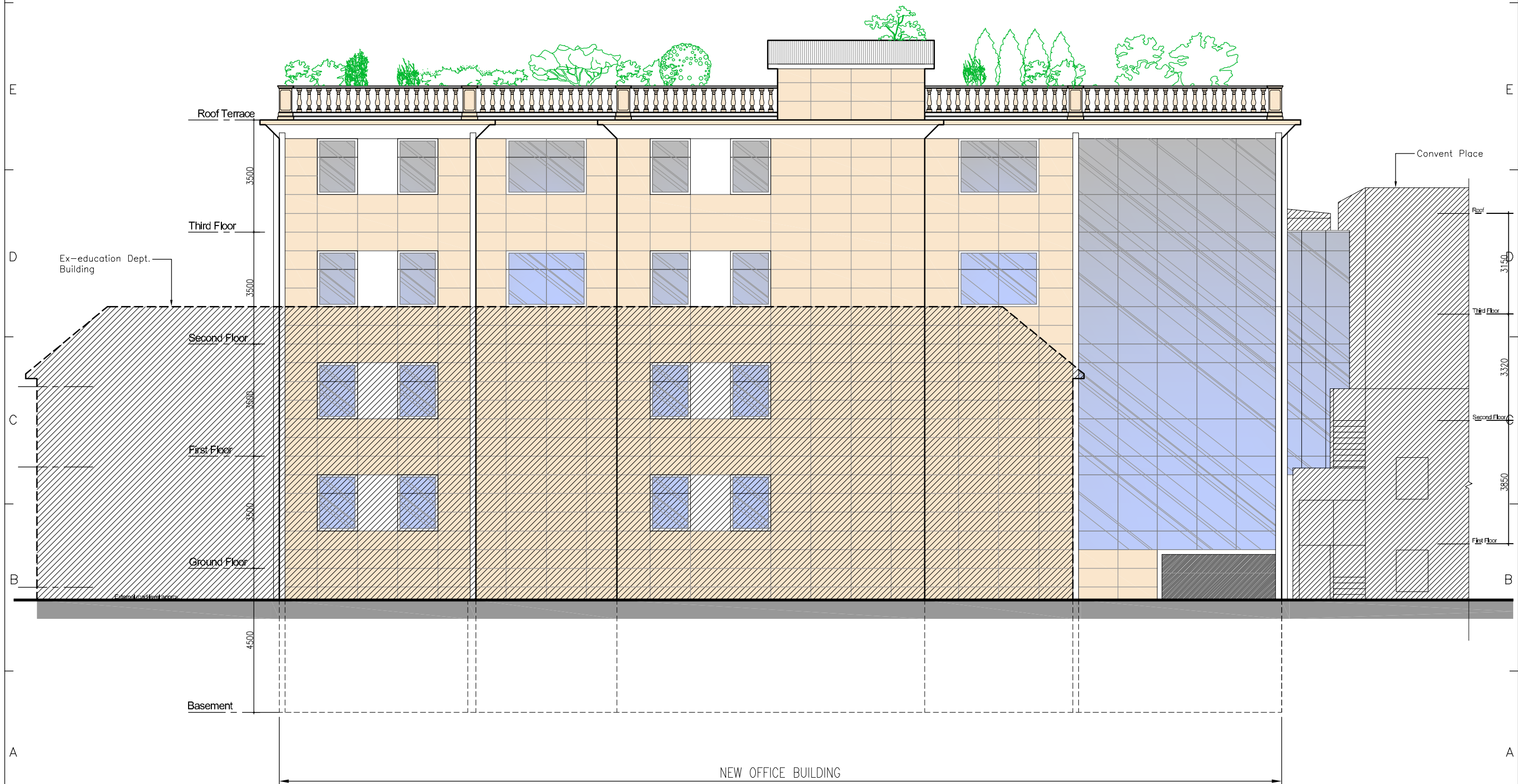


# New Office Building at No.6 Convent Place

## Proposed East Elevation (Scheme 2)



**D.M.Orfila Associates**  
CHARTERED ARCHITECTS

21 Horse Barrack Lane  
Suite No.1  
Gibraltar

Tel:(350) 20040056 email: davidorfila@yahoo.co.uk



*Client*  
**Rison Ltd.**

Written dimensions on these drawings shall take precedence over scaled dimensions. Contractors shall verify and be responsible for all dimensions and conditions on the project and this office must be notified of any variations from the dimensions and conditions shown on these drawings prior to commencement of any works. All contractors are deemed to have made themselves aware of site conditions prior to entering into any contract. This drawing is the property of D.M.Orfila Associates. Copyright is reserved by them and the drawing is issued on condition that it is not copied, reproduced, retained or disclosed to any unauthorised person, either wholly or in part without the consent in writing by D.M.Orfila Associates.

Rev	Description	Date
-----	-------------	------

*Project Name*  
**New Office Building  
at No.6 Convent Place**

*Drawing Title*  
**Proposed East  
Elevation (Scheme 2)**

*Project Number*  
**96**

*Date Drawn*  
**Oct. 12**

<i>Scale</i>	<b>1:125</b>
<i>Drawn by</i>	<b>DO</b>
<i>Checked by</i>	<b>DO</b>
<i>Drawing Number</i>	<b>PR96-D-12</b>
<i>Revision</i>	