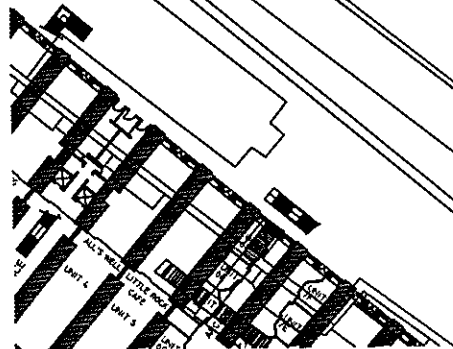


RECEIVED  
10 JUL 2012  
TOWN PLANNING AND  
BUILDING CONTROL



Project No. G495/1	Date: JAN 2012
ST MARTIN'S SCHOOL	Scale: 1:100
EXISTING SITE PLAN	Page: 1 of 1
GOVERNMENT OF GIBRALTAR	
Prepared by: MOSQUERA Checked by: MOSQUERA Drawn by: MOSQUERA Date: 10 JUL 2012	

EXTENSION TO ST MARTIN'S SCHOOL, SMITH DORREN AVENUE, GIBRALTAR

RECEIVED  
 10 JUL 2012  
 TOWN PLANNING AND  
 BUILDING CONTROL

