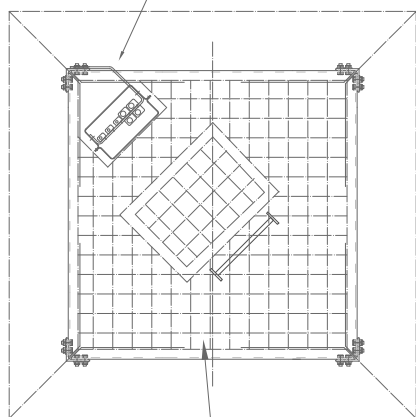


PLAN AT 5.5M LEVEL

2 No 89 x 6.3 CHS DISH POLE MOUNTS COMPLETE WITH 4 No M12 SQUARE BENT "U" BOLTS TO FIT 125 x 65 PFC'S.

FEEDER BRACKETS FROM 50 x 8 THK BENT PLATE WITH 3mm THICK BENT PLATE FEEDER PROTECTION COVERS TO RUN UP SOUTH EAST LEG.



PLAN AT 3.1M LEVEL

ANTI MONKEY CLIMBING GUARD TO ALL FACES FROM 2mm THICK PLATE SECTIONS. AREA WITHIN TOWER TO BE FILLED WITH WELD MESH AND TRAP DOOR SUPPORTED ON ANGLE FRAMES TO PREVENT CLIMBING.

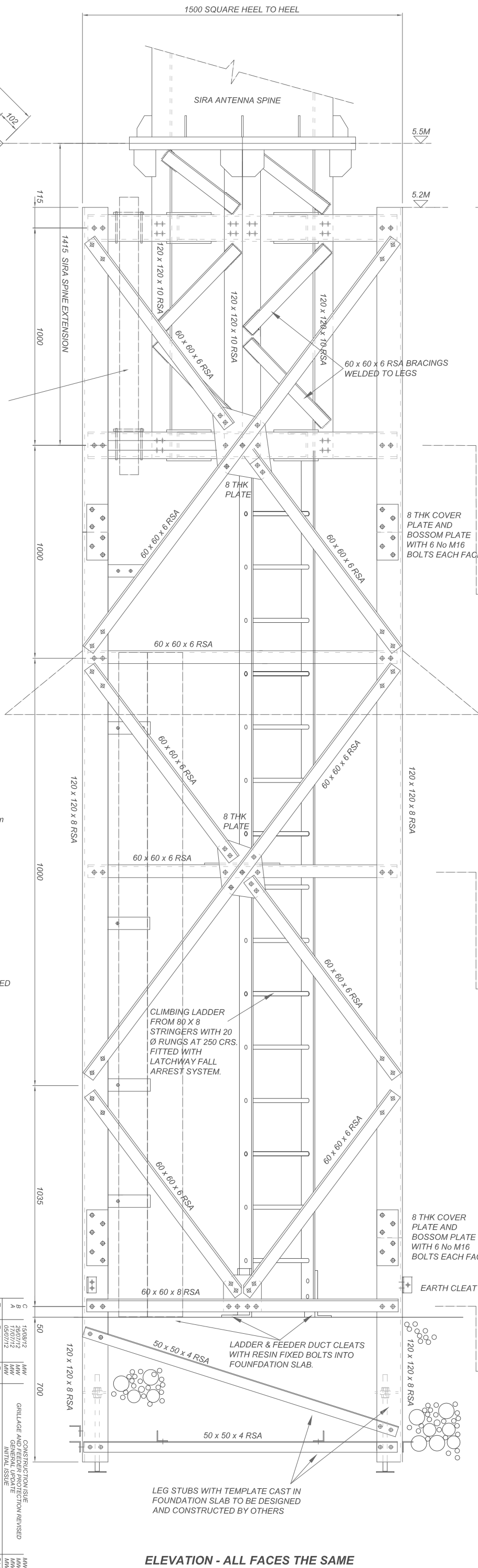
GENERAL NOTES.

- DO NOT SCALE THIS DRAWING.
- ALL DIMENSIONS ARE IN mm UNLESS OTHERWISE SPECIFIED
- THIS DRAWING TO BE READ IN CONJUNCTION WITH DRG Nos 12599/L/100, 101, 102, 103, 104, 105, 106, & 107.

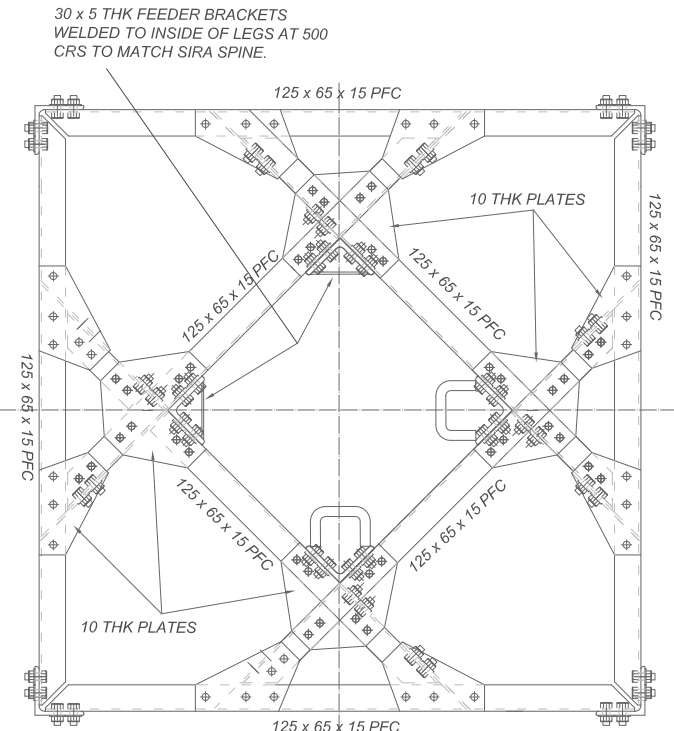
STEELWORK:

- ALL MATERIAL TO BE GRADE S275JO TO BS EN 10025.
- THERMAL CUTTING OF HOLES NOT TO BE USED.
- ALL WELDING TO BE CARRIED OUT IN ACCORDANCE WITH BS EN1011-2: 2001 AND BS EN 288 BY AN APPROVED WELDER CONFORMING TO THE REQUIREMENTS OF BS EN 287, PART 1
- HOLES TO BE 1.5mm LARGER THAN BOLTS.
- ALL STEEL AND BOLTS TO BE HOT DIPPED GALVANISED TO BS EN ISO 1461
- ALL BOLTS TO BE GRADE 8.8 IN COMPLIANCE WITH BS 4190 AND SUPPLIED WITH RECTANGULAR SECTION SINGLE COIL SPRING WASHERS TO BS 4320 UNLESS NOTED OTHERWISE.

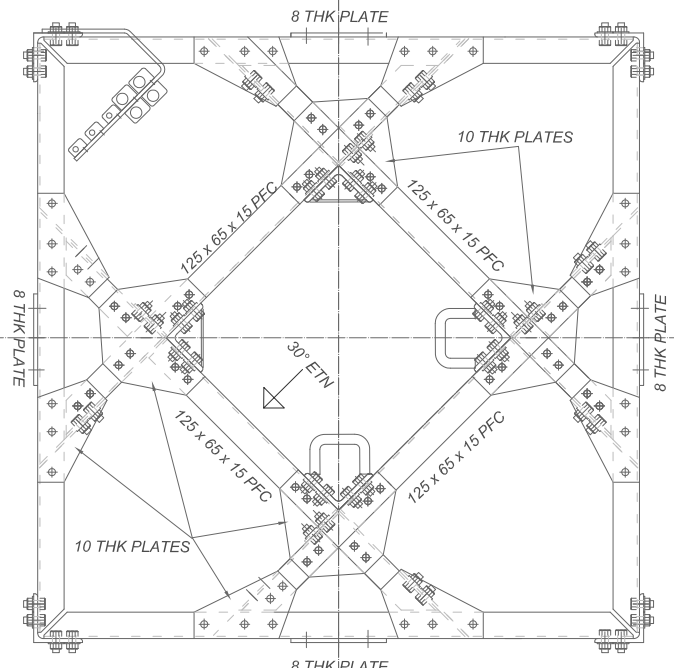
Project		ARONA : GIBRALTAR DTT & DAB TOWER	
Title		GENERAL ARRANGEMENT 5.2M LATTICE TOWER SECTION	
Scale	N T S	Drawn by	RC
Date	04.07.12	Checked by	MDW
Project		Telecommunication Design & Management	
Address		Tempest Mews, Broughton Hall Business Park, Broughton, Skipton, North Yorkshire, BD23 3AE	
Telephone		+44 (0) 1756 700 942	
Rev		Date	
G	15/08/12	MM	CONSTRUCTION/ISSUE
A	17/07/12	MM	GRILLAGE AND GENERAL UPDATE
MW	05/07/12	MM	INITIAL ISSUE
CHKD		MM	



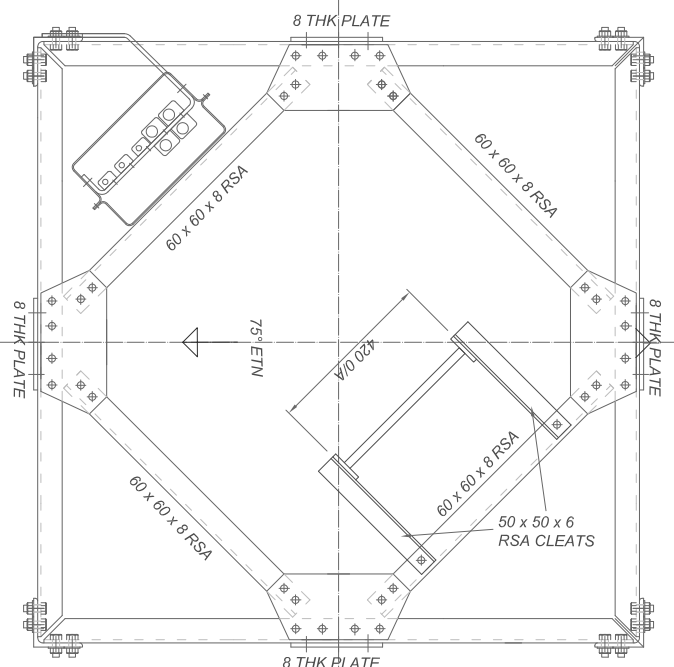
ELEVATION - ALL FACES THE SAME



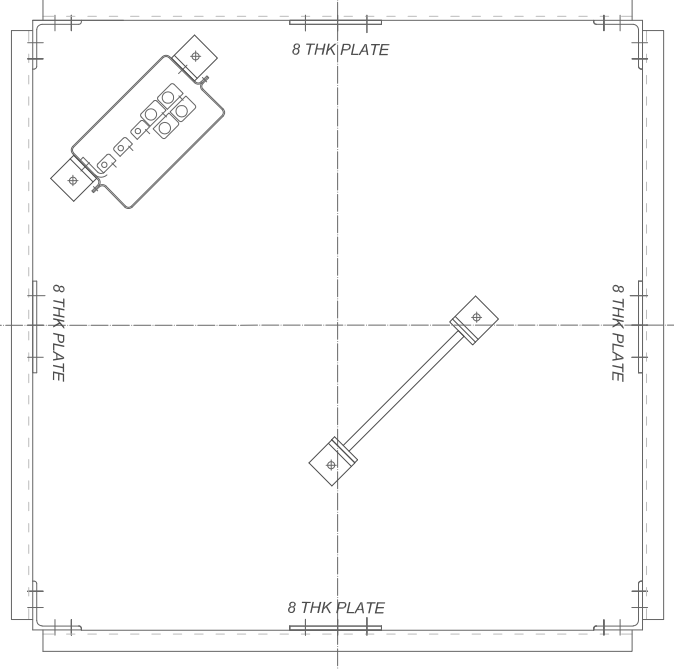
PLAN AT 5.2M LEVEL



PLAN AT 4.1M LEVEL



PLAN AT 2.1M LEVEL



PLAN AT BASE LEVEL