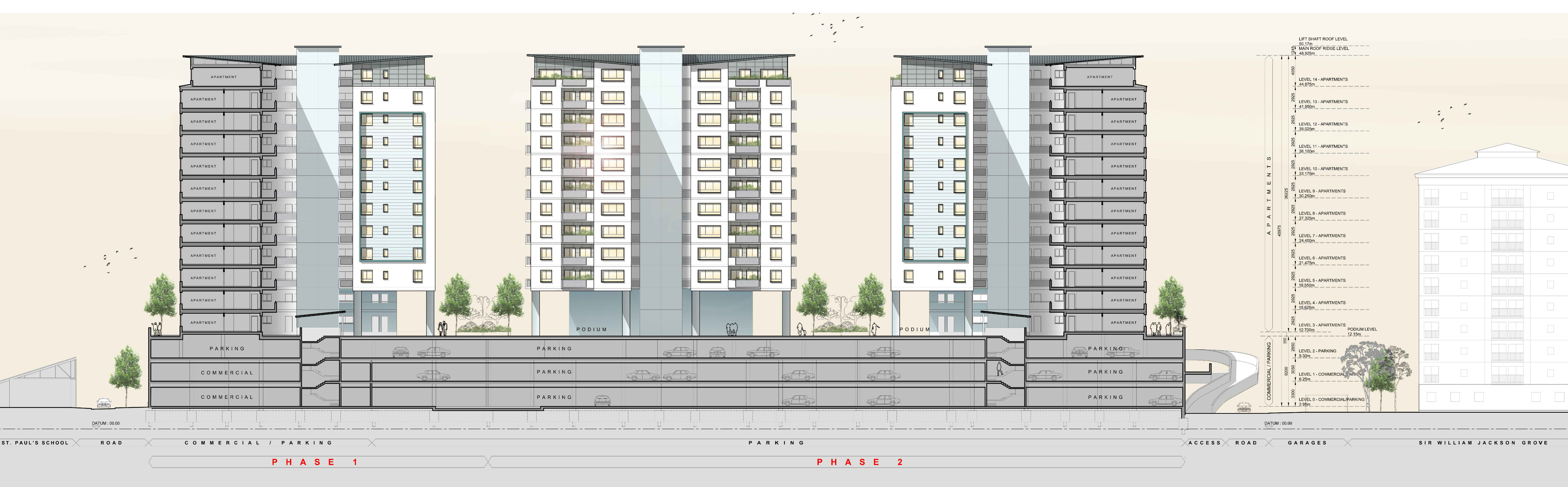


NOTES:
 DO NOT SCALE OFF THIS DRAWING. CHECK DIMENSIONS ON SITE PRIOR TO COMMENCEMENT. THIS DRAWING IS THE COPYRIGHT OF WSRM ARCHITECTS LTD. AND MUST NOT BE COPIED OR REPRODUCED, IN PART OR IN WHOLE, WITHOUT PERMISSION OF WSRM ARCHITECTS LTD. TO BE READ IN CONJUNCTION WITH OTHER RELEVANT CONSULTANTS INFORMATION.



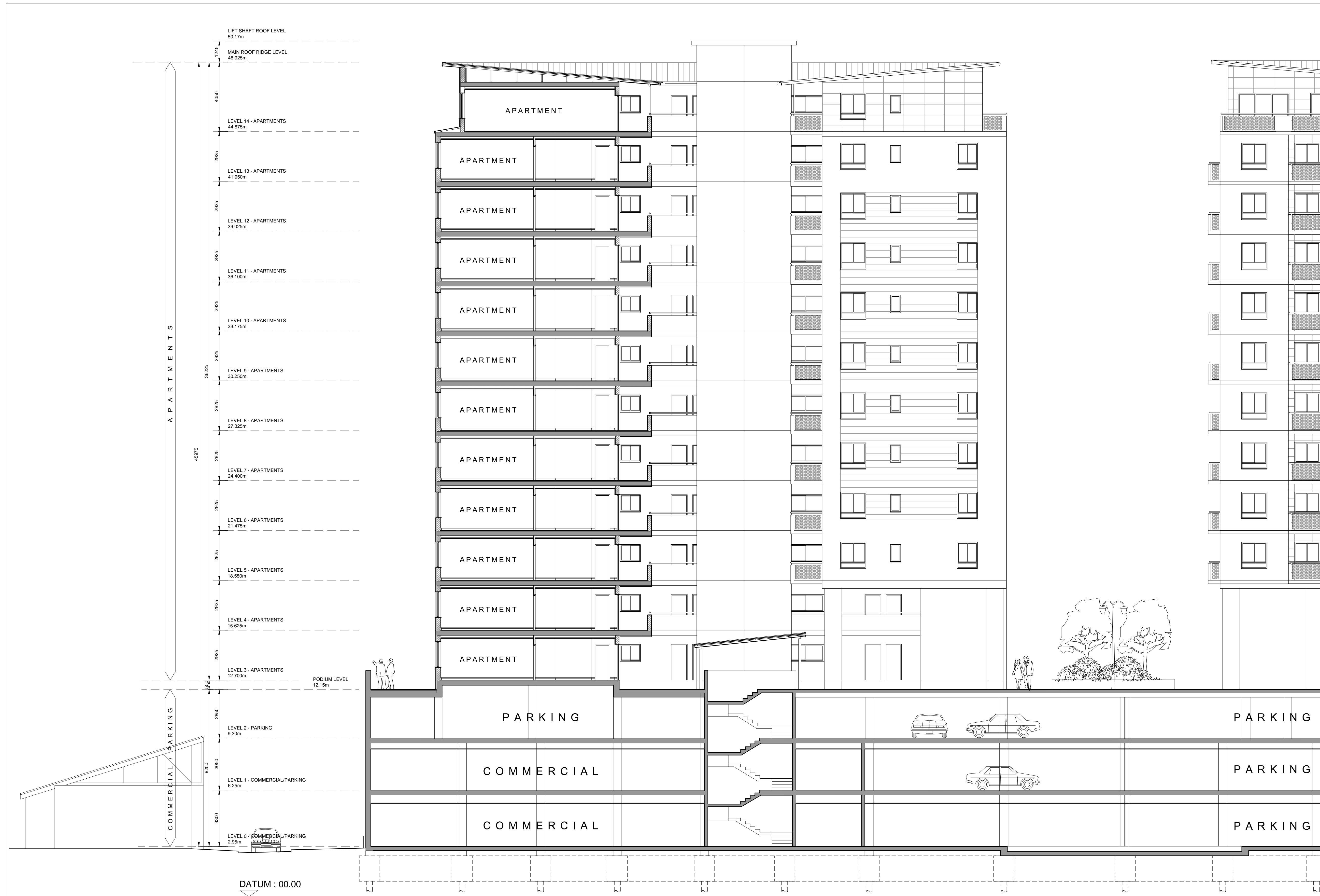
LONGITUDINAL SECTION A-A Scale 1/250

LEGEND :

- 01 ROOF**
 SHEET METAL: DEEP TROUGH TRAPEZOIDAL ALUMINIUM ROOFING DECK, CORUS/KALZIP TR35/200 TRAPEZOIDAL PROFILE, 0.9MM THICK, IN A STUCCO EMBOSSED ALUMINIUM OR MILL FINISH TO THE MAIN ROOFS. ALL FASCIAE, CAPPINGS, FLASHINGS, GUTTERS AND THE LIKE TO MATCH MAIN ROOFING PANELS.
 ROOF ACCESS SAFETY SYSTEM: IT IS A REQUIREMENT THAT THE 'MANSAFE/LATCHWAY' SYSTEM BE INCORPORATED FOR REASONS OF HEALTH & SAFETY AND IT IS SUGGESTED THAT IT BE TIED TO THE ROOFING SUB CONTRACT PACKAGE FOR PURPOSES OF CONTINUITY AND COMPATIBILITY TO DIFFERENT ROOFING SYSTEMS.
 RWPS & GUTTERS: THE RAIN WATER GOODS PACKAGE WILL BE COMPRISED OF POLYESTER POWDER COATED ALUMINIUM RWPS AND GUTTERS. SIZES FOR RWPS ARE TO BE SIZED BY THE MANUFACTURER (CHECKED BY THE M&E ENGINEER). SIZES FOR THE BOX GUTTERS AT ROOF LEVEL WILL BE CONFIRMED BY ROOFING SUBCONTRACTOR AND WILL DICTATE THE SIZES OF RWPS.
- 02 WALLS**
 COMBINATION OF CLAY THERMOCLIA BLOCKS AND STANDARD CONCRETE BLOCKS FINISHED EXTERNALLY WITH A PROPRIETARY INSULATED THROUGH COLOURED RENDER.
 HIGH LEVEL : APPROXIMATELY 80MM EPS INSULATION, SUB GRADES OF RENDER, NYLON LATH AND COLOURED TOP COAT RENDER ABOVE FIRST FLOOR TO MAIN BODY OF BLOCKS.
 COLOURS ARE TO BE APPLIED WITH THE STANDARD SIZED AGGREGATE AND AS FOLLOWS:
 CHINA WHITE
 OVERCAST (PALE GREY)
 COLD DAY (PALE BLUE)
 LOW LEVELS/IMPACT PRONE AREAS : PROPRIETARY INSULATED THROUGH COLOURED RENDER WITH PROTECTION BOARD: APPROXIMATELY 45MM EPS INSULATION, 12MM CEMENT BASED PROTECTION BOARD, SUB GRADES OF RENDER NYLON LATH AND COLOURED TOP COAT RENDER ABOVE FIRST FLOOR TO THE BALCONY AREAS. THIS WILL ALLOW FOR PROTECTION AGAINST IMPACT AND ALLOW RESIDENTS TO ATTACH OBJECTS TO THE WALLS OF THE AMENITY BALCONIES. TO BE COLOURED AS ONE OF THE ABOVE AND WITH STANDARD SIZED AGGREGATE.
 MANUFACTURERS: ALL MANUFACTURES TO PROVIDE A MINIMUM OF 10 YEARS GUARANTEE AND COLOURED LAYER TO BE RESISTANT TO MARINE ENVIRONMENT TO PREVENT COLOUR FADING. TENDERING CONTRACTORS ARE TO CHOOSE FROM ONE OF THE FOLLOWING SUPPLIERS:
 STO
 WEBER
 DRYVIT

- 03 EXTERNAL WINDOWS, DOORS AND LOUVRES**
 HIGH QUALITY DOUBLE GLAZED WINDOWS AND DOORS, TO INCLUDE HIGH LEVEL SOLAR [WEST AND SOUTH FACING] AND ACOUSTIC PERFORMANCE.
 DOORS, DOOR FRAMES/SCREENS/FANLIGHTS, WINDOWS, LOUVRES AND THE LIKE TO BE MANUFACTURED FROM EXTRUDED ALUMINIUM SECTIONS, WITH A THERMAL BREAK, IN ACCORDANCE WITH BS 4873, AS TECHNICAL SPEC 55mm RANGE OR SIMILAR APPROVED. U-VALUE 0.8-1.0.
 ALL ALUMINIUM FRAMES TO HAVE A POLYESTER POWDER COATING WHICH CONFORMS TO BS 6496.
 HANDLES, HINGES, AND FRICTION STAYS TO BE ALUMINIUM ALLOY.
 WINDOWS TO BE LOCKABLE.
 WINDOW AND DOOR GLAZING TO BE 28MM ARGON GAS FILLED, FACTORY SEALED UNITS.
 TOUGHENED GLASS TO BE USED IN ALL DOORS, DOOR SIDELIGHTS AND FANLIGHTS, AND IMPACT AREAS AS DEFINED IN THE CURRENT BUILDING REGULATIONS.
 ALL WINDOWS TO HAVE PROJECTING (100mm) PREFORMED ALUMINIUM CILLS, COMPLETE WITH STOP END PANELS.
 DOORS TO HAVE EXTRUDED ALUMINIUM WEATHER-PROOF CILLS, WHICH COMPLY WITH THE BUILDING REGULATIONS PART M.
- 04 WALL CLADDING**
 EXTERNAL CERAMIC WALL TILE/PANEL ON A PROPRIETARY SUPPORT SYSTEM. COLOURS TO BE CONFIRMED.
- 05 BALCONIES**
 BASE AND FRONT ONLY ENCLOSED IN SITU CAST BALCONIES; CEMENT-SAND SCREED LAD TO FALL TO DRAINAGE OUTLETS ON BOTH SIDES WITH A QUARRY OR NON-SLIP CERAMIC FLOOR TILE FINISH. SIDES OF BALCONY TO RECEIVE PERFORATED GALVANISED STEEL PAINTED PANELS AND HANDRAILS OR OFF THE SHELF POLYESTER POWDER COATED ALUMINIUM BALUSTRADES AND HANDRAILS. BALCONY WALLS TO RECEIVE AN EXTERIOR GRADE PAINT FINISH. (TBC)

rev	date	amendments
X		
PLANNING APPLICATION		
WSRM architects		
1.2.20 EUROTOWERS PO BOX 474 GIBRALTAR Tel: (350) 200 74547 Fax: (350) 200 74583 Email: architects@wsrm.gi Web: www.wsrmltd.com		
CLIENT		
CAMOREN HOLDINGS LTD		
PROJECT		
BOB PELIZA MEWS RESIDENTIAL ESTATE		
DRAWING TITLE		
GENERAL ARRANGEMENT LONGITUDINAL SECTION A-A		
SCALE	JOB + DRG REF No.	REV
1/250 @A1	G579[3-009]	X
DATE	GA LONG SECTION A-A	
29.09.2015		



NOTES:
 DO NOT SCALE OFF THIS DRAWING. CHECK DIMENSIONS ON SITE PRIOR TO COMMENCEMENT. THIS DRAWING IS THE COPYRIGHT OF WSRM ARCHITECTS LTD. AND MUST NOT BE COPIED OR REPRODUCED, IN PART OR IN WHOLE, WITHOUT PERMISSION OF WSRM ARCHITECTS LTD. TO BE READ IN CONJUNCTION WITH OTHER RELEVANT CONSULTANTS INFORMATION.

LEGEND:
 01 ROOF
 SHEET METAL: DEEP TROUGH TRAPEZOIDAL ALUMINIUM ROOFING DECK, CORUS/KALZIP TR35/200 TRAPEZOIDAL PROFILE, 0.9MM THICK, IN A STUCCO EMBOSSED ALUMINIUM OR MILL FINISH TO THE MAIN ROOFS. ALL FASCIAE, CAPPINGS, FLASHINGS, GUTTERS AND THE LIKE TO MATCH MAIN ROOFING PANELS.

ROOF ACCESS SAFETY SYSTEM: IT IS A REQUIREMENT THAT THE MANSAFETY/LATCHING SYSTEM BE INCORPORATED FOR REASONS OF HEALTH & SAFETY AND IT IS SUGGESTED THAT IT BE TIED TO THE ROOFING SUB CONTRACT PACKAGE FOR PURPOSES OF CONTINUITY AND COMPATIBILITY TO DIFFERENT ROOFING SYSTEMS.
 RWPS & GUTTERS: THE RAIN WATER GOODS PACKAGE WILL BE COMPRISED OF POLYESTER POWDER COATED ALUMINIUM RWPS AND GUTTERS. SIZES FOR RWPS ARE TO BE SIZED BY THE MANUFACTURER (CHECKED BY THE M&E ENGINEER). SIZES FOR THE BOX GUTTERS AT ROOF LEVEL WILL BE CONFIRMED BY ROOFING SUBCONTRACTOR AND WILL DICTATE THE SIZES OF RWPS.

02 WALLS
 COMBINATION OF CLAY THERMOCLILLA BLOCKS AND STANDARD CONCRETE BLOCKS FINISHED EXTERNALLY WITH A PROPRIETARY INSULATED THROUGH COLOURED RENDER.
 HIGH LEVEL: APPROXIMATELY 80MM EPS INSULATION, SUB GRADES OF RENDER, NYLON LATH AND COLOURED TOP COAT RENDER ABOVE FIRST FLOOR TO MAIN BODY OF BLOCKS.
 COLOURS ARE TO BE APPLIED WITH THE STANDARD SIZED AGGREGATE AND AS FOLLOWS:
 CHINA WHITE
 OVERCAST (PALE GREY)
 COLD DAY (PALE BLUE)

LOW LEVELS/IMPACT PRONE AREAS: PROPRIETARY INSULATED THROUGH COLOURED RENDER WITH PROTECTION BOARD: APPROXIMATELY 45MM EPS INSULATION, 12MM CEMENT BASED PROTECTION BOARD, SUB GRADES OF RENDER NYLON LATH AND COLOURED TOP COAT RENDER ABOVE FIRST FLOOR TO THE BALCONY AREAS. THIS WILL ALLOW FOR PROTECTION AGAINST IMPACT AND ALLOW RESIDENTS TO ATTACH OBJECTS TO THE WALLS OF THE AMENITY BALCONIES. TO BE COLOURED AS ONE OF THE ABOVE AND WITH STANDARD SIZED AGGREGATE.

MANUFACTURERS: ALL MANUFACTURES TO PROVIDE A MINIMUM OF 10 YEARS GUARANTEE AND COLOURED LAYER TO BE RESISTANT TO MARINE ENVIRONMENT TO PREVENT COLOUR FADING. TENDERING CONTRACTORS ARE TO CHOOSE FROM ONE OF THE FOLLOWING SUPPLIERS: STO WEBBER DRYVIT

03 EXTERNAL WINDOWS, DOORS AND LOUVRES
 HIGH QUALITY DOUBLE GLAZED WINDOWS AND DOORS, TO INCLUDE HIGH LEVEL SOLAR [WEST AND SOUTH FACINGS] AND ACOUSTIC PERFORMANCE.
 DOORS, DOOR FRAMES/SCREENS/FANLIGHTS, WINDOWS, LOUVRES AND THE LIKE TO BE MANUFACTURED FROM EXTRUDED ALUMINIUM SECTIONS, WITH A THERMAL BREAK, IN ACCORDANCE WITH BS 4873, AS TECHNICAL SOLEAL 55mm RANGE OR SIMILAR APPROVED. U-VALUE 0.8-1.0.
 ALL ALUMINIUM FRAMES TO HAVE A POLYESTER POWDER COATING WHICH CONFORMS TO BS 6496.
 HANDLES, HINGES, AND FRICTION STAYS TO BE ALUMINIUM ALLOY.
 WINDOWS TO BE LOCKABLE.

WINDOW AND DOOR GLAZING TO BE 28MM ARGON GAS FILLED, FACTORY SEALED UNITS.
 TOUGHENED GLASS TO BE USED IN ALL DOORS, DOOR SIDELIGHTS AND FANLIGHTS, AND IMPACT AREAS AS DEFINED IN THE CURRENT BUILDING REGULATIONS.

ALL WINDOWS TO HAVE PROJECTING (100mm) PREFORMED ALUMINIUM CILLS, COMPLETE WITH STOP END PANELS.
 DOORS TO HAVE EXTRUDED ALUMINIUM WEATHER-PROOF CILLS, WHICH COMPLY WITH THE BUILDING REGULATIONS PART M.

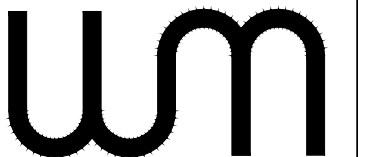
04 WALL CLADDING
 EXTERNAL CERAMIC WALL TILE/PANEL ON A PROPRIETARY SUPPORT SYSTEM. COLOURS TO BE CONFIRMED.

05 BALCONIES
 BASE AND FRONT ONLY ENCLOSED IN SITU CAST BALCONIES; CEMENT-SAND SCREED LAID TO FALL TO DRAINAGE OUTLETS ON BOTH SIDES WITH A QUARRY OR NON-SLIP CERAMIC FLOOR TILE FINISH. SIDES OF BALCONY TO RECEIVE PERFORATED GALVANISED STEEL PAINTED PANELS AND HANDRAILS OR OFF THE SHELF POLYESTER POWDER COATED ALUMINIUM BALUSTRADES AND HANDRAILS. BALCONY WALLS TO RECEIVE AN EXTERIOR GRADE PAINT FINISH. (TBC)

rev	date	amendments
x		

PLANNING APPLICATION

WSRM architects
 1.2.20 EUROTOWERS
 PO BOX 474
 GIBRALTAR
 Tel: (350) 200 74547
 Fax: (350) 200 74553
 Email: architects@wsrm.gi
 Web: www.wsrmg.com



CLIENT
 CAMOREN HOLDINGS LTD

PROJECT
 BOB PELIZA MEWS
 RESIDENTIAL ESTATE

DRAWING TITLE
 GENERAL ARRANGEMENT
 BLOCK 1- SECTION B-B

SCALE	JOB + DRG REF No.	REV
1/100 @ A1	G579[3-010]	
DATE	29.09.2015	
	GA-BLOCK 1 - SECTION B-B	

ST. PAUL'S SCHOOL ROAD COMMERCIAL / PARKING

PHASE 1

BLOCK 1 SECTION B-B Scale 1/100

NOTES :
 DO NOT SCALE OFF THIS DRAWING. CHECK DIMENSIONS ON SITE PRIOR TO COMMENCEMENT. THIS DRAWING IS THE COPYRIGHT OF WSRM ARCHITECTS LTD. AND MUST NOT BE COPIED OR REPRODUCED, IN PART OR IN WHOLE, WITHOUT PERMISSION OF WSRM ARCHITECTS LTD. TO BE READ IN CONJUNCTION WITH OTHER RELEVANT CONSULTANTS INFORMATION.



NORTH ELEVATION Scale 1/250

LEGEND :

- 01 ROOF**
 SHEET METAL: DEEP TROUGH TRAPEZOIDAL ALUMINIUM ROOFING DECK, CORUS/KALZIP TR35/200 TRAPEZOIDAL PROFILE, 0.9MM THICK, IN A STUCCO EMBOSSED ALUMINIUM OR MILL FINISH TO THE MAIN ROOFS. ALL FASCIAE, CAPPINGS, FLASHINGS, GUTTERS AND THE LIKE TO MATCH MAIN ROOFING PANELS.
 ROOF ACCESS SAFETY SYSTEM: IT IS A REQUIREMENT THAT THE 'MANSAFE/LATCHWAY' SYSTEM BE INCORPORATED FOR REASONS OF HEALTH & SAFETY AND IT IS SUGGESTED THAT IT BE TIED TO THE ROOFING SUB CONTRACT PACKAGE FOR PURPOSES OF CONTINUITY AND COMPATIBILITY TO DIFFERENT ROOFING SYSTEMS.
 RWPS & GUTTERS: THE RAIN WATER GOODS PACKAGE WILL BE COMPRISED OF POLYESTER POWDER COATED ALUMINIUM RWPS AND GUTTERS. SIZES FOR RWPS ARE TO BE SIZED BY THE MANUFACTURER (CHECKED BY THE M&E ENGINEER). SIZES FOR THE BOX GUTTERS AT ROOF LEVEL WILL BE CONFIRMED BY ROOFING SUBCONTRACTOR AND WILL DICTATE THE SIZES OF RWPS.
- 02 WALLS**
 COMBINATION OF CLAY THERMOCLILLA BLOCKS AND STANDARD CONCRETE BLOCKS FINISHED EXTERNALLY WITH A PROPRIETARY INSULATED THROUGH COLOURED RENDER.
 HIGH LEVEL : APPROXIMATELY 80MM EPS INSULATION, SUB GRADES OF RENDER, NYLON LATH AND COLOURED TOP COAT RENDER ABOVE FIRST FLOOR TO MAIN BODY OF BLOCKS.
 COLOURS ARE TO BE APPLIED WITH THE STANDARD SIZED AGGREGATE AND AS FOLLOWS:
 CHINA WHITE
 OVERCAST (PALE GREY)
 COLD DAY (PALE BLUE)
 LOW LEVELS/IMPACT PRONE AREAS : PROPRIETARY INSULATED THROUGH COLOURED RENDER WITH PROTECTION BOARD: APPROXIMATELY 45MM EPS INSULATION, 12MM CEMENT BASED PROTECTION BOARD, SUB GRADES OF RENDER NYLON LATH AND COLOURED TOP COAT RENDER ABOVE FIRST FLOOR TO THE BALCONY AREAS. THIS WILL ALLOW FOR PROTECTION AGAINST IMPACT AND ALLOW RESIDENTS TO ATTACH OBJECTS TO THE WALLS OF THE AMENITY BALCONIES. TO BE COLOURED AS ONE OF THE ABOVE AND WITH STANDARD SIZED AGGREGATE.
 MANUFACTURERS: ALL MANUFACTURERS TO PROVIDE A MINIMUM OF 10 YEARS GUARANTEE AND COLOURED LAYER TO BE RESISTANT TO MARINE ENVIRONMENT TO PREVENT COLOUR FADING. TENDERING CONTRACTORS ARE TO CHOOSE FROM ONE OF THE FOLLOWING SUPPLIERS:
 STO
 WEBER
 DRYVIT

- 03 EXTERNAL WINDOWS, DOORS AND LOUVRES**
 HIGH QUALITY DOUBLE GLAZED WINDOWS AND DOORS, TO INCLUDE HIGH LEVEL SOLAR (WEST AND SOUTH FACING) AND ACOUSTIC PERFORMANCE.
 DOORS, DOOR FRAMES/SCREENS/FANLIGHTS, WINDOWS, LOUVRES AND THE LIKE TO BE MANUFACTURED FROM EXTRUDED ALUMINIUM SECTIONS, WITH A THERMAL BREAK, IN ACCORDANCE WITH BS 4873, AS TECHNICAL SOLEAL 55mm RANGE OR SIMILAR APPROVED. U-VALUE 0.8-1.0.
 ALL ALUMINIUM FRAMES TO HAVE A POLYESTER POWDER COATING WHICH CONFORMS TO BS 6496.
 HANDLES, HINGES, AND FRICTION STAYS TO BE ALUMINIUM ALLOY.
 WINDOWS TO BE LOCKABLE.
 WINDOW AND DOOR GLAZING TO BE 28MM ARGON GAS FILLED, FACTORY SEALED UNITS.
 TOUGHENED GLASS TO BE USED IN ALL DOORS, DOOR SIDELIGHTS AND FANLIGHTS, AND IMPACT AREAS AS DEFINED IN THE CURRENT BUILDING REGULATIONS.
 ALL WINDOWS TO HAVE PROJECTING (100mm) PREFORMED ALUMINIUM CILLS, COMPLETE WITH STOP END PANELS.
 DOORS TO HAVE EXTRUDED ALUMINIUM WEATHER-PROOF CILLS, WHICH COMPLY WITH THE BUILDING REGULATIONS PART M.
- 04 WALL CLADDING**
 EXTERNAL CERAMIC WALL TILE/PANEL ON A PROPRIETARY SUPPORT SYSTEM. COLOURS TO BE CONFIRMED.
- 05 BALCONIES**
 BASE AND FRONT ONLY ENCLOSED IN SITU CAST BALCONIES; CEMENT/SAND SCREED LAID TO FALL TO DRAINAGE OUTLETS ON BOTH SIDES WITH A QUARRY OR NON-SLIP CERAMIC FLOOR TILE FINISH. SIDES OF BALCONY TO RECEIVE PERFORATED GALVANISED STEEL PAINTED PANELS AND HANDRAILS OR OFF THE SHELF POLYESTER POWDER COATED ALUMINIUM BALUSTRADES AND HANDRAILS. BALCONY WALLS TO RECEIVE AN EXTERIOR GRADE PAINT FINISH. (TBC)

rev	date	amendments
X		

PLANNING APPLICATION

WSRM architects
 1-2-20 EUROTOWERS
 PO BOX 474
 GIBRALTAR
 Tel: (350) 200 74647
 Fax: (350) 200 74683
 Email: architects@wsrm.gi
 Web: www.wsrn.gi

CLIENT
 CAMOREN HOLDINGS LTD

PROJECT
 BOB PELIZA MEWS
 RESIDENTIAL ESTATE

DRAWING TITLE
 GENERAL ARRANGEMENT
 NORTH ELEVATION

SCALE	JOB + DRG REF No.	REV
1/250 @A1	G579[3-014] _{GA-NORTH ELEV.}	X
DATE		
Sept. 2015		

NOTES:
DO NOT SCALE OFF THIS DRAWING. CHECK DIMENSIONS ON SITE PRIOR TO COMMENCEMENT. THIS DRAWING IS THE COPYRIGHT OF WSRM ARCHITECTS LTD. AND MUST NOT BE COPIED OR REPRODUCED, IN PART OR IN WHOLE, WITHOUT PERMISSION OF WSRM ARCHITECTS LTD. TO BE READ IN CONJUNCTION WITH OTHER RELEVANT CONSULTANTS INFORMATION.

LEGEND

- 01** **ROOF**
SHEET METAL, DEEP TROUGH TRAPEZOIDAL ALUMINIUM ROOFING DECK, CORUS/KALZIP 17.55/200 TRAPEZOIDAL PROFILE, 0.5MM THICK, IN A STUCCO EMBOSSED ALUMINIUM OR MILL FINISH TO THE MAIN ROOFS, ALL FASCIAE, CAPPINGS, FLASHINGS, GUTTERS AND THE LIKE TO MATCH MAIN ROOFING PANELS.

ROOF ACCESS SAFETY SYSTEM: IT IS A REQUIREMENT THAT THE 'MANSAFE/LATCHWAY' SYSTEM BE INCORPORATED FOR REASONS OF HEALTH & SAFETY AND IT IS SUGGESTED THAT BE TIED TO THE ROOFING SUB CONTRACT PACKAGE FOR PURPOSES OF CONTINUITY AND COMPATIBILITY TO DIFFERENT ROOFING SYSTEMS.

RWPS & GUTTERS: THE RAIN WATER GOODS PACKAGE WILL BE COMPRISED OF POLYESTER POWDER COATED ALUMINIUM RWPS AND GUTTERS. SIZES FOR RWPS ARE TO BE SIZED BY THE MANUFACTURER (CHECKED BY THE M&E ENGINEER). SIZES FOR THE BOX GUTTERS AT ROOF LEVEL WILL BE CONFIRMED BY ROOFING SUBCONTRACTOR AND WILL DICTATE THE SIZES OF RWPS.
- 02** **WALLS**
COMBINATION OF CLAY THERMOCLILLA BLOCKS AND STANDARD CONCRETE BLOCKS FINISHED EXTERNALLY WITH A PROPRIETARY INSULATED THROUGH COLOURED RENDER.

HIGH LEVEL: APPROXIMATELY 80MM EPS INSULATION, SUB GRADES OF RENDER, NYLON LATH AND COLOURED TOP COAT RENDER ABOVE FIRST FLOOR TO MAIN BODY OF BLOCKS.
COLOURS ARE TO BE APPLIED WITH THE STANDARD SIZED AGGREGATE AND AS FOLLOWS:
CHINA WHITE
OVERCAST (PALE GREY)
COLD DAY (PALE BLUE)

LOW LEVELS/IMPACT PRONE AREAS: PROPRIETARY INSULATED THROUGH COLOURED RENDER WITH PROTECTION BOARD, APPROXIMATELY 45MM EPS INSULATION, 12MM CEMENT BASED PROTECTION BOARD, SUB GRADES OF RENDER NYLON LATH AND COLOURED TOP COAT RENDER ABOVE FIRST FLOOR TO THE BALCONY AREAS. THIS WILL ALLOW FOR PROTECTION AGAINST IMPACT AND ALLOW RESIDENTS TO ATTACH OBJECTS TO THE WALLS OF THE AMENITY BALCONIES. TO BE COLOURED AS ONE OF THE ABOVE AND WITH STANDARD SIZED AGGREGATE.

MANUFACTURERS: ALL MANUFACTURES TO PROVIDE A MINIMUM OF 10 YEARS GUARANTEE AND COLOURED LAYER TO BE RESISTANT TO MARINE ENVIRONMENT TO PREVENT COLOUR FADING. TENDERING CONTRACTORS ARE TO CHOOSE FROM ONE OF THE FOLLOWING SUPPLIERS:
STO
HEISLER
DRYVIT
- 03** **EXTERNAL WINDOWS, DOORS AND LOUVRES**
HIGH QUALITY DOUBLE GLAZED WINDOWS AND DOORS, TO INCLUDE HIGH LEVEL SOLAR (WEST AND SOUTH FACING) AND ACOUSTIC PERFORMANCE.
DOORS, DOOR FRAMES/SCREENS/FANLIGHTS, WINDOWS, LOUVRES AND THE LIKE TO BE MANUFACTURED FROM EXTRUDED ALUMINIUM SECTIONS, WITH A THERMAL BREAK, IN ACCORDANCE WITH BS 4873, AS TECHNICAL SOLAR 55mm RANGE OR SIMILAR APPROVED. U-VALUE 0.8-1.0.

ALL ALUMINIUM FRAMES TO HAVE A POLYESTER POWDER COATING WHICH CONFORMS TO BS 6496.
HANDLES, HINGES, AND FRICTION STAYS TO BE ALUMINIUM ALLOY.

WINDOW AND DOOR GLAZING TO BE 28MM ARGON GAS FILLED, FACTORY SEALED UNITS.
TOUGHENED GLASS TO BE USED IN ALL DOORS, DOOR SIDELIGHTS AND FANLIGHTS, AND IMPACT AREAS AS DEFINED IN THE CURRENT BUILDING REGULATIONS.

ALL WINDOWS TO HAVE PROJECTING (100mm) PREFORMED ALUMINIUM CILLS, COMPLETE WITH STOP END PANELS.
DOORS TO HAVE EXTRUDED ALUMINIUM WEATHER-PROOF CILLS, WHICH COMPLY WITH THE BUILDING REGULATIONS PART M.
- 04** **WALL CLADDING**
EXTERNAL CERAMIC WALL TILE/PANEL ON A PROPRIETARY SUPPORT SYSTEM. COLOURS TO BE CONFIRMED.
- 05** **BALCONIES**
BASE AND FRONT ONLY ENCLOSED IN SITU CAST BALCONIES; CEMENT-SAND SCREED LAID TO FALL TO DRAINAGE OUTLETS ON BOTH SIDES WITH A QUARRY OR NON-SLIP CERAMIC FLOOR TILE FINISH. SIDES OF BALCONY TO RECEIVE PERFORATED GALVANISED STEEL PAINTED PANELS AND HANDRAILS OR OFF THE SHELF POLYESTER POWDER COATED ALUMINIUM BALUSTRADES AND HANDRAILS. BALCONY WALLS TO RECEIVE AN EXTERIOR GRADE PAINT FINISH. (TEC)



WEST ELEVATION SCALE 1/250

rev	date	amendments
X		

PLANNING APPLICATION

WSRM architects
1,2,20 EUROTOWERS
PO BOX 474
GIBRALTAR
Tel: (350) 200 74547
Fax: (350) 200 74583
Email: architects@wsrm.gi
Web: www.wsrm.gi

CLIENT
CAMOREN HOLDINGS LTD

PROJECT
**BOB PELIZA MEWS
RESIDENTIAL ESTATE**

DRAWING TITLE
**GENERAL ARRANGEMENT
WEST ELEVATION**

SCALE	JOB + DRG REF No.	REV
1/250 @A1	G579[3-017]GA-WEST ELEV.	X