



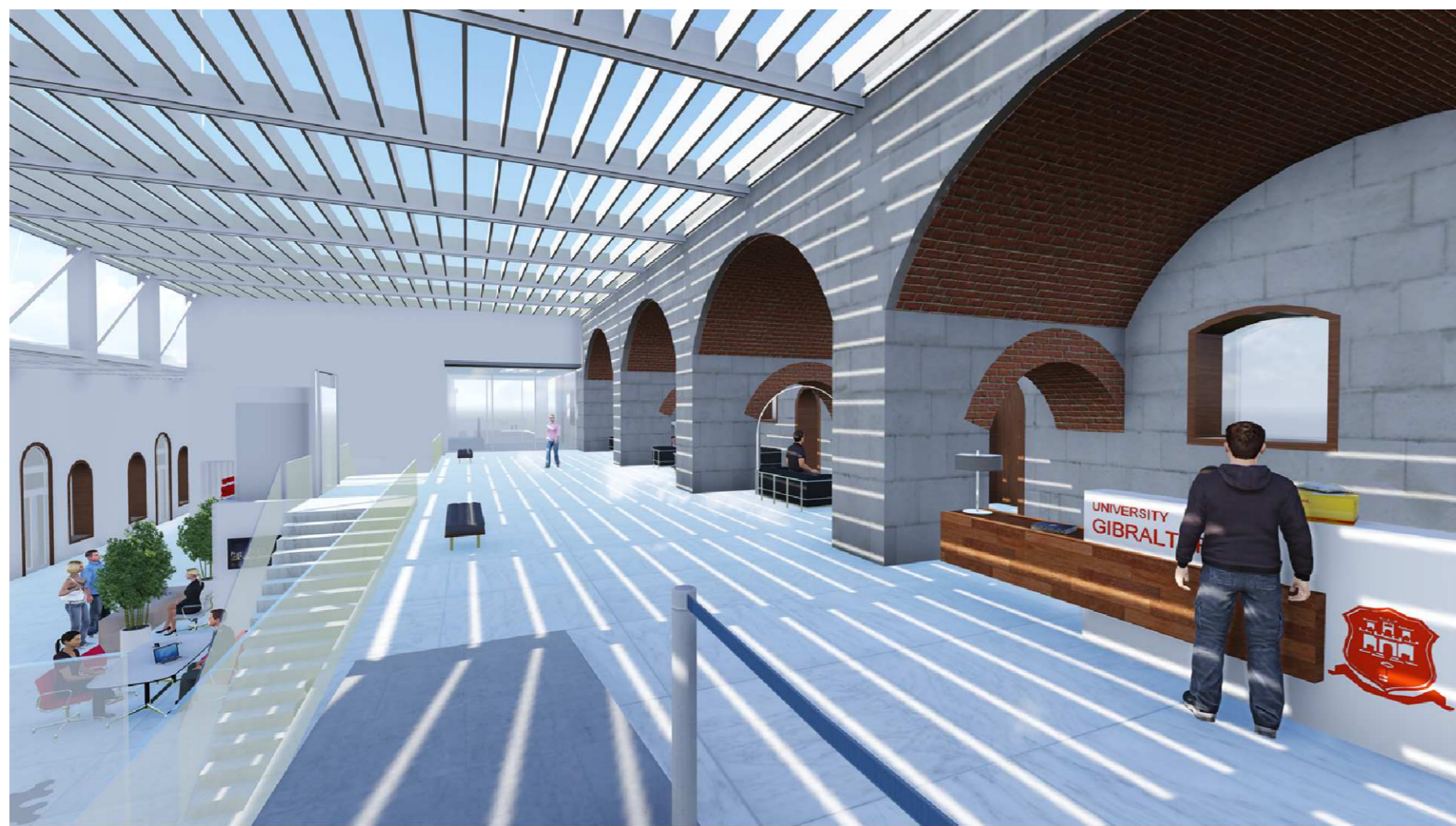
V02 ATRIUM FOYER



V05 CARPARK FOYER



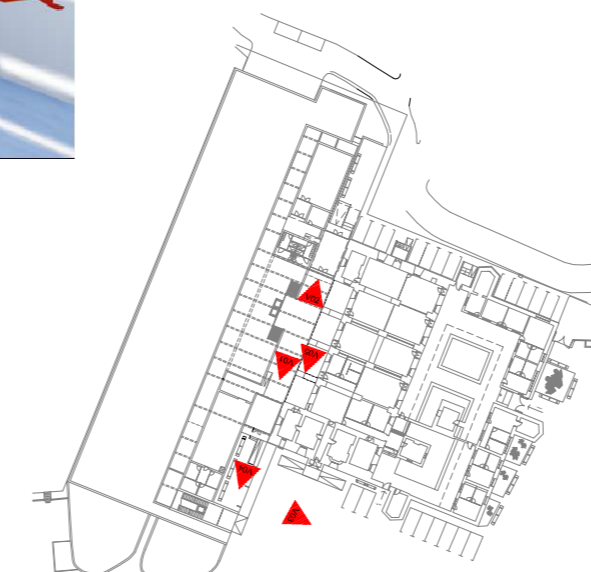
V04 MAIN ENTRANCE



V01 ATRIUM MAIN ENTRANCE



V03 CARPARK MAIN ENTRANCE





V07 ATRIUM MAIN RECEPCION



V8 COURTYARD GARDEN



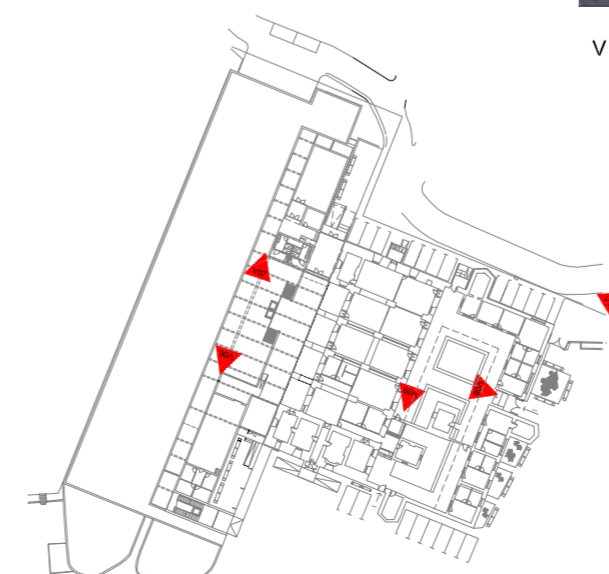
V9 COURTYARD GARDEN



V06 ATRIUM LEARNING CAFE



V10 COURTYARD GARDEN



PROJECT: UNIVERSITY OF GIBRALTAR
 CONTRACTOR: CASAIS GIBRALTAR LTD
 DEVELOPER: UNIVERSITY OF GIBRALTAR LIMITED
 DESIGN: ACROCK CONSTRUCTIONS AND AYALTO
 Architecture COMPUTER GRAPHICS



DECEMBER 2014
 DRAFT
 CG02



V11 UNIVERSITY RESTAURANT



ATRIUM



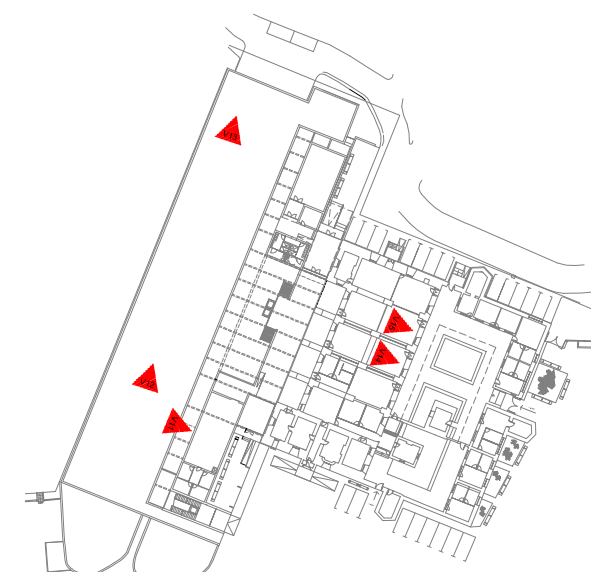
V13 UNIVERSITY RESTAURANT



V14 SOFT ZONE



V12 UNIVERSITY RESTAURANT



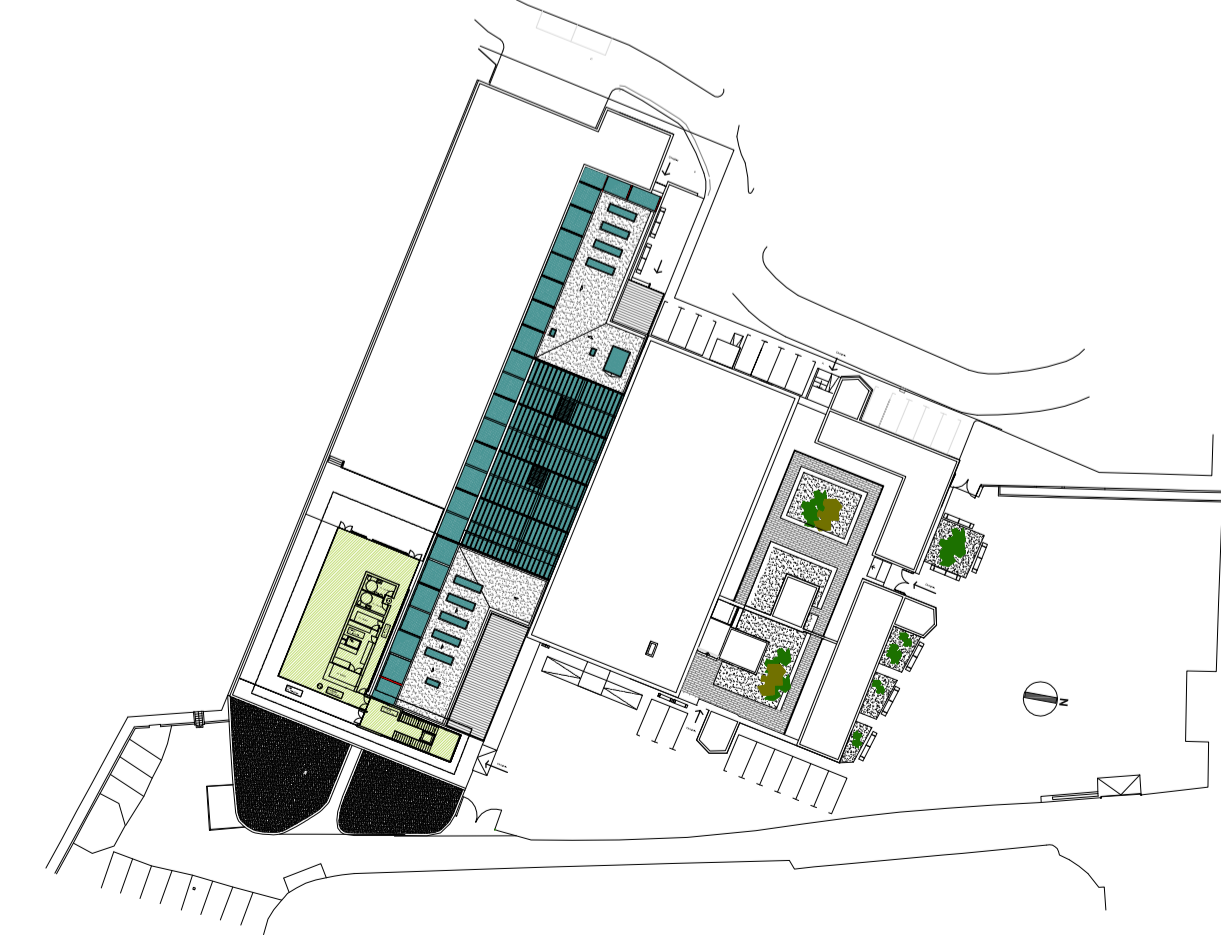
V15 MAIN HALL



BASEMENT LEVEL



GROUND LEVEL



FIRST LEVEL



GENERAL VIEW



AERIAL PHOTO



AERIAL PHOTO

Management Unit	
Head of University	21.00 m ²
Senior Management 1	29.80 m ²
Senior Management 2	20.45 m ²
Senior Management 3	18.14 m ²
Middle Management 1	16.40 m ²
Middle Management 2	15.30 m ²
Middle Management 3	15.40 m ²
Finance & Commercial	
Human Resources	52 m ²
Common Boardroom	49.92 m ²
Interview rooms	11.15 m ²
Interview rooms	15.70 m ²
Main Entrance	9.78 m ²
Hall	8.25 m ²
Corridor	12.50 m ²
Total	288.59 m²
Library	
Library Reception	47.30 m ²
Librarians Office & Store	15.92 m ²
Computer/Online exam room	41.72 m ²
Seminar Room	46.30 m ²
Quiet Study area	45.78 m ²
Lobby/Main Hall	91.10 m ²
Porch	99.40 m ²
Total	387.52 m²
Academic Staff	
Offices for research students	15.68 m ²
Offices for research students	15.68 m ²
Offices for teaching staff of faculties 1	38.47 m ²
Offices teaching staff faculties 2	29.08 m ²
Offices teaching staff faculties 3	49.66 m ²
Offices teaching staff faculties 4	29.36 m ²
Offices teaching staff faculties 5	29.35 m ²
Offices teaching staff faculties 6	12.30 m ²
Total	219.58 m²
Common Teaching Facilities	
Classrooms (10 students 2 units) 2x32.69x65.36 m ²	
Classrooms (20 students 3 units) 3x73.29x119.79m ²	
Classrooms (30 students 3units) 2x73.29x146.52m ²	
Toilets 1	25.32 m ²
Toilet 2	25.32 m ²
Total	482.30 m²
Offices for Support Staff	
Office for IMT staff	32.68 m ²
Office for technical staff	32.68 m ²
Nursing station	12.72 m ²
Estates Support Staff room 1	15 m ²
Estates Support Staff room 2	15 m ²
Total	108.08 m²
School of Hospitality & Laboratories	
Primary care clinic	12.05 m ²
Computer Laboratory	73.28 m ²
Research controlled experiment room	19.90 m ²
Research Laboratory	65.66 m ²
Faculty Health Studies Simulation suite	82.22 m ²
Faculty Health studies storage room	12.20 m ²
Special storage room research laboratory	12.20 m ²
Toilets	33.65 m ²
Total	341.34 m²
Administrative Areas/ Offices	
Reception Staff Office	0 m ²
Av. preparation (photocopying)	12.45 m ²
Main reception	150 m ²
Accommodation services	
Total	162.45 m²
University Refectory	
University refectory	131.60 m ²
Kitchen	14.88 m ²
Toilets	13.18 m ²
Soft Zone-Learning Cafe	72 m ²
Total	231.66 m²
School of Hospitality	
Pantry/kitchen/fridge/freezer rooms	34.78 m ²
Teaching Kitchen and serve	94.36 m ²
Total	129.14 m²
University Restaurant	
University restaurant	147.10 m ²
Kitchen	37.50 m ²
Toilets	18.70 m ²
	15.00 m ²
Total	218.35 m²
Other Spaces	
Computer distribution room	24.06 m ²
Computer distribution	16.00 m ²
Computer distribution	14.10 m ²
Total	218.35 m²

GRAPHIC SCALE



SITUATION PLAN

PROJECT: UNIVERSITY OF GIBRALTAR
 CONTRACTOR: CASAIS GIBRALTAR LTD
 DEVELOPER: UNIVERSITY OF GIBRALTAR LIMITED
 DESIGN: ACROCK CONSTRUCTIONS AND AYALTO

SCALE: W.S.



DECEMBER 2014
 DRAFT
 A-00



School of Hospitality	
Pantry/larder/fridge&freezer rooms	34.78 m2
Teaching Kitchen and serve	94.36 m2
Total	129.14 m2

University Restaurant	
University restaurant	147.10 m2
Kitchen	48.22 m2
Toilets	5.70 m2
Total	216.02 m2

Other Spaces	
Computer distribution room	24.06 m2
Computer distribution room 2	24.06 m2
Storage	24.06 m2
Total	18.12 m2

Management Unit	
Head of University	21.00 m2
Senior Management 1	20.60 m2
Senior Management 2	20.45 m2
Middle Management 1	16.40 m2
Middle Management 2	15.30 m2
Middle Management 3	15.40 m2
Finance & Commercial	
Human Resources	37.20 m2
Toilets	16.55 m2
Main Entrance	9.78 m2
Hall	8.25 m2
Corridor	12.50 m2
Soft Zone	91.10 m2
Total	284.53 m2

Library	
Library Reception	47.30 m2
Librarians Office & Store	15.92 m2
Computer/Online exam room	41.72 m2
Seminar Room	46.30 m2
Quiet Study area	45.78 m2
Lobby/Main Hall	91.10 m2
Porch	99.40 m2
Total	387.52 m2

Academic Staff	
Offices for research students	15.68 m2
Offices for research students	15.68 m2
Offices for teaching staff of faculties 1	31.20 m2
Offices teaching staff faculties 2	36.66 m2
Offices teaching staff faculties 3	31.00 m2
Offices teaching staff faculties 4	33.56 m2
Offices teaching staff faculties 5	29.35 m2
Storage	12.30 m2
Toilets	14.40 m2
Total	219.83 m2

Common Teaching Facilities	
Classrooms (10 students 2 units) 2x32.68=65.36 m2	
Classrooms (20 students 3 units) 3x73.26=219.78m2	
Classrooms (30 students 3units) 2x73.26=146.52m2	
Toilets 1	25.32 m2
Toilet 2	25.32 m2
Total	482.30 m2

Offices for Support Staff	
Office for IMT staff	32.68 m2
Office for technical staff	32.68 m2
Nursing station	12.72 m2
Estates Support Staff room 1	15 m2
Estates Support Staff romm 2	15 m2
Total	108.08 m2

Faculty Health Studies & Laboratories	
Primary care clinic	12.05 m2
Computer Laboratory	73.26 m2
Research cotrolled experiment room	19.90 m2
Research Laboratory	95.86 m2
Faculty Health Studies Simulation suite	77.80 m2
Storage	11.85 m2
Faculty Health studies storage room	12.20 m2
Special storage room research laboratory	12.20 m2
Toilets	33.65 m2
Total	348.77 m2

Administrative Areas/ Offices	
Reception Staff Office	
Av preparation /photocopying	12.45 m2
Main recepclon	150 m2
Accommodation services	
Total	162.45 m2

University Refectory	
University refectory	131.60 m2
Kitchen	14.88 m2
Toilets	13.18 m2
Soft Zone-Learning Cafe	72 m2
Total	231.66 m2

GRAPHIC SCALE

PROJECT: UNIVERSITY OF GIBRALTAR
 CONTRACTOR: CASAIS GIBRALTAR LTD
 DEVELOPER: UNIVERSITY OF GIBRALTAR LIMITED
 DESIGN: ACROCK CONSTRUCTIONS AND AYALTO

Architecture BASEMENT LEVEL +0.00 m

SCALE 1/400
level 30.09



DECEMBER 2014
 DRAFT
A-01



School of Hospitality	
Pantry/larder/fridge&freezer rooms	34.78 m2
Teaching Kitchen and serve	94.36 m2
Total	129.14 m2

University Restaurant	
University restaurant	147.10 m2
Kitchen	48.22 m2
Toilets	5.70 m2
Total	216.02 m2

Other Spaces	
Computer distribution room	24.06 m2
Computer distribution room 2	
Storage	24.06 m2
Total	48.12 m2

Management Unit	
Head of University	21.00 m2
Senior Management 1	20.60 m2
Senior Management 2	20.45 m2
Middle Management 1	16.40 m2
Middle Management 2	15.30 m2
Middle Management 3	15.40 m2
Finance & Commercial	
Human Resources	37.20 m2
Toilets	16.55 m2
Main Entrance	9.78 m2
Hall	8.25 m2
Corridor	12.50 m2
Soft Zone	91.10 m2
Total	284.53 m2

Library	
Library Reception	47.30 m2
Librarians Office & Store	15.92 m2
Computer/Online exam room	41.72 m2
Seminar Room	46.30 m2
Quiet Study area	45.78 m2
Lobby/Main Hall	91.10 m2
Porch	99.40 m2
Total	387.52 m2

Academic Staff	
Offices for research students	15.68 m2
Offices for research students	15.68 m2
Offices for teaching staff of faculties 1	31.20 m2
Offices teaching staff faculties 2	36.66 m2
Offices teaching staff faculties 3	31.00 m2
Offices teaching staff faculties 4	33.56 m2
Offices teaching staff faculties 5	29.35 m2
Storage	12.30 m2
Toilets	14.40 m2
Total	219.83 m2

Common Teaching Facilities	
Classrooms (10 students 2 units) 2x32.68=65.36 m2	
Classrooms (20 students 3 units) 3x73.26=219.78m2	
Classrooms (30 students 3units) 2x73.26=146.52m2	

Toilets 1	25.32 m2
Toilet 2	25.32 m2
Total	482.30 m2

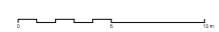
Offices for Support Staff	
Office for IMT staff	32.68 m2
Office for technical staff	32.68 m2
Nursing station	12.72 m2
Estates Support Staff room 1	15 m2
Estates Support Staff romm 2	15 m2
Total	108.08 m2

Faculty Health Studies & Laboratories	
Primary care clinic	12.05 m2
Computer Laboratory	73.26 m2
Research cotrolled experiment room	19.90 m2
Research Laboratory	95.86 m2
Faculty Health Studies Simulation suite	77.80 m2
Storage	11.85 m2
Faculty Health studies storage room	12.20 m2
Special storage room research laboratory	12.20 m2
Toilets	33.65 m2
Total	348.77 m2

Administrative Areas/ Offices	
Reception Staff Office	
Av preparation /photocoping	12.45 m2
Main reception	150 m2
Accommodation services	
Total	162.45 m2

University Refectory	
University refectory	131.60 m2
Kitchen	14.88 m2
Toilets	13.18 m2
Soft Zone-Learning Cafe	72 m2
Total	231.66 m2

GRAPHIC SCALE



PROJECT: UNIVERSITY OF GIBALTAR
 CONTRACTOR: CASAIS GIBALTAR LTD
 DEVELOPER: UNIVERSITY OF GIBALTAR LIMITED
 DESIGN: ACROCK CONSTRUCTIONS AND AYALTO

Architecture GROUND LEVEL +2.89 m

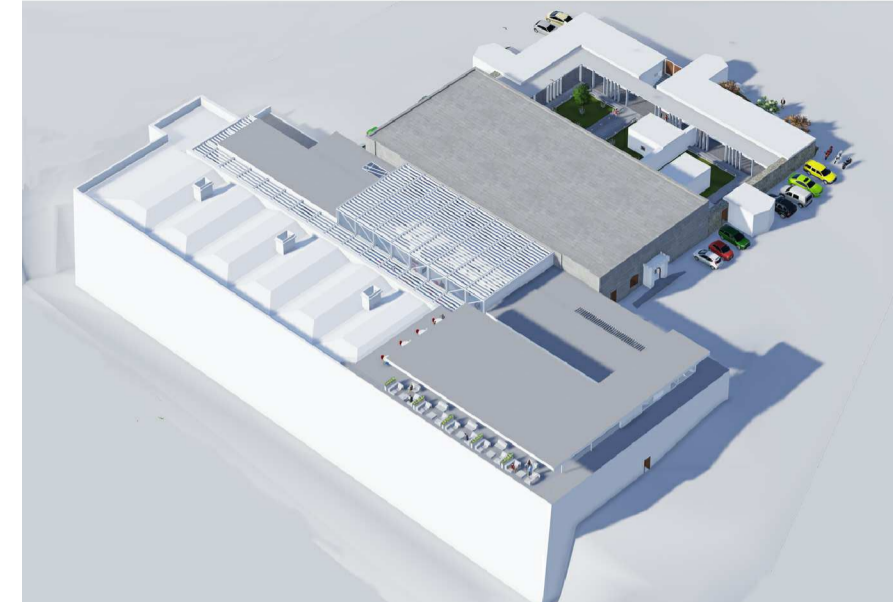
SCALE 1/400
 level 32.93



DECEMBER 2014

DRAFT

A-02



VOLUMETRIC VIEW

School of Hospitality	
Pantry/larder/fridge&freezer rooms	34.78 m2
Teaching Kitchen and serve	94.36 m2
Total	129.14 m2

University Restaurant	
University restaurant	147.10 m2
Kitchen	48.22 m2
Toilets	5.70 m2
Total	216.02 m2

Other Spaces	
Computer distribution room	24.06 m2
Computer distribution room 2	24.06 m2
Storage	24.06 m2
Total	48.12 m2

Management Unit	
Head of University	21.00 m2
Senior Management 1	20.60 m2
Senior Management 2	20.45 m2
Middle Management 1	16.40 m2
Middle Management 2	15.30 m2
Middle Management 3	15.40 m2
Finance & Commercial	
Human Resources	37.20 m2
Toilets	16.55 m2
Main Entrance	9.78 m2
Hall	8.25 m2
Corridor	12.50 m2
Soft Zone	91.10 m2
Total	284.53 m2

Library	
Library Reception	47.30 m2
Librarians Office & Store	15.92 m2
Computer/Online exam room	41.72 m2
Seminar Room	46.30 m2
Quiet Study area	45.78 m2
Lobby/Main Hall	91.10 m2
Porch	99.40 m2
Total	387.52 m2

Academic Staff	
Offices for research students	15.68 m2
Offices for research students	15.68 m2
Offices for teaching staff of faculties 1	31.20 m2
Offices teaching staff faculties 2	36.66 m2
Offices teaching staff faculties 3	31.00 m2
Offices teaching staff faculties 4	33.56 m2
Offices teaching staff faculties 5	29.35 m2
Storage	12.30 m2
Toilets	14.40 m2
Total	219.83 m2

Common Teaching Facilities	
Classrooms (10 students 2 units) 2x32.68=65.36 m2	
Classrooms (20 students 3 units) 3x73.26=219.78m2	
Classrooms (30 students 3units) 2x73.26=146.52m2	
Toilets 1	25.32 m2
Toilet 2	25.32 m2
Total	482.30 m2

Offices for Support Staff	
Office for IMT staff	32.68 m2
Office for technical staff	32.68 m2
Nursing station	12.72 m2
Estates Support Staff room 1	15 m2
Estates Support Staff romm 2	15 m2
Total	108.08 m2

Faculty Health Studies & Laboratories	
Primary care clinic	12.05 m2
Computer Laboratory	73.26 m2
Research cotrolled experiment room	19.90 m2
Research Laboratory	95.86 m2
Faculty Health Studies Simulation suite	77.80 m2
Storage	11.85 m2
Faculty Health studies storage room	12.20 m2
Special storage room research laboratory	12.20 m2
Toilets	33.65 m2
Total	348.77 m2

Administrative Areas/ Offices	
Reception Staff Office	
Av preparation /photocopying	12.45 m2
Main reception	150 m2
Accommodation services	
Total	162.45 m2

University Refectory	
University refectory	131.60 m2
Kitchen	14.88 m2
Toilets	13.18 m2
Soft Zone-Learning Cafe	72 m2
Total	231.66 m2

First Level

GRAPHIC SCALE

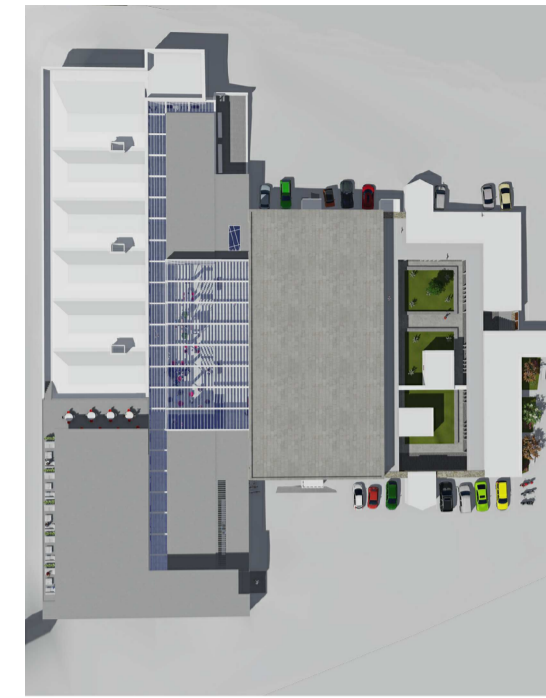
PROJECT: UNIVERSITY OF GIBALTAR
 CONTRACTOR: CASAIS GIBALTAR LTD
 DEVELOPER: UNIVERSITY OF GIBALTAR LIMITED
 DESIGN: ACROCK CONSTRUCTIONS AND AYALTO

Architecture FIRST LEVEL +6.35 m

SCALE 1/400
 Level 37.50



DECEMBER 2014
 DRAFT
A-03



AERIAL VIEW

Management Unit	
Head of University	21.00 m2
Senior Management 1	20.60 m2
Senior Management 2	20.45 m2
Middle Management 1	16.40 m2
Middle Management 2	15.30 m2
Middle Management 3	15.40 m2
Finance & Commercial	
Human Resources	37.20 m2
Toilets	16.55 m2
Main Entrance	9.78 m2
Hall	8.25 m2
Corridor	12.50 m2
Soft Zone	91.10 m2
Total	284.53 m2

Library	
Library Reception	47.30 m2
Librarians Office & Store	15.92 m2
Computer/Online exam room	41.72 m2
Seminar Room	46.30 m2
Quiet Study area	45.78 m2
Lobby/Main Hall	91.10 m2
Porch	99.40 m2
Total	387.52 m2

Academic Staff	
Offices for research students	15.68 m2
Offices for research students	15.68 m2
Offices for teaching staff of faculties 1	31.20 m2
Offices teaching staff faculties 2	36.66 m2
Offices teaching staff faculties 3	31.00 m2
Offices teaching staff faculties 4	33.56 m2
Offices teaching staff faculties 5	29.35 m2
Storage	12.30 m2
Toilets	14.40 m2
Total	219.83 m2

Common Teaching Facilities	
Classrooms (10 students 2 units) 2x32.68=65.36 m2	
Classrooms (20 students 3 units) 3x73.26=219.78m2	
Classrooms (30 students 3units) 2x73.26=146.52m2	
Toilets 1	25.32 m2
Toilet 2	25.32 m2
Total	482.30 m2

Offices for Support Staff	
Office for IMT staff	32.68 m2
Office for technical staff	32.68 m2
Nursing station	12.72 m2
Estates Support Staff room 1	15 m2
Estates Support Staff room 2	15 m2
Total	108.08 m2

Faculty Health Studies & Laboratories	
Primary care clinic	12.05 m2
Computer Laboratory	73.26 m2
Research cotrolled experiment room	19.90 m2
Research Laboratory	95.86 m2
Faculty Health Studies Simulation suite	77.80 m2
Storage	11.85 m2
Faculty Health studies storage room	12.20 m2
Special storage room research laboratory	12.20 m2
Toilets	33.65 m2
Total	348.77 m2

Administrative Areas/ Offices	
Reception Staff Office	
Av preparation /photocopying	12.45 m2
Main recepclon	150 m2
Accommodation services	
Total	162.45 m2

University Refectory	
University refectory	131.60 m2
Kitchen	14.88 m2
Toilets	13.18 m2

School of Hospitality	
Pantry/larder/fridge&freezer rooms	34.78 m2
Teaching Kitchen and serve	94.36 m2
Total	129.14 m2

University Restaurant	
University restaurant	147.10 m2
Kitchen	48.22 m2
Toilets	15.00 m2
Total	216.02 m2

Other Spaces	
Computer distribution room	24.06 m2
Computer distribution room 2	
Storage	24.06 m2
Total	48.12 m2



Roof Level

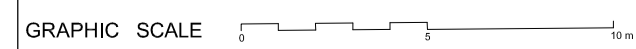
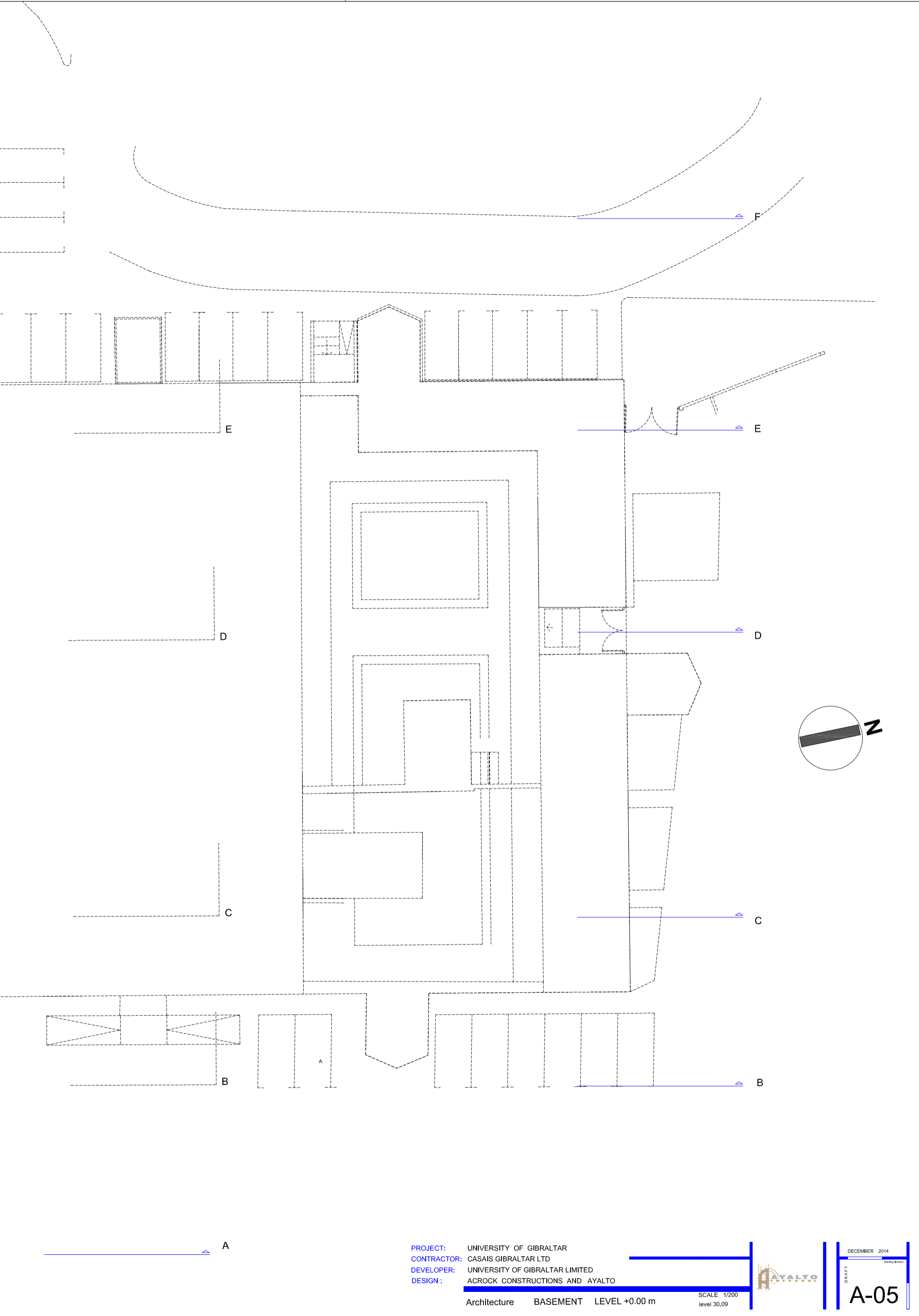
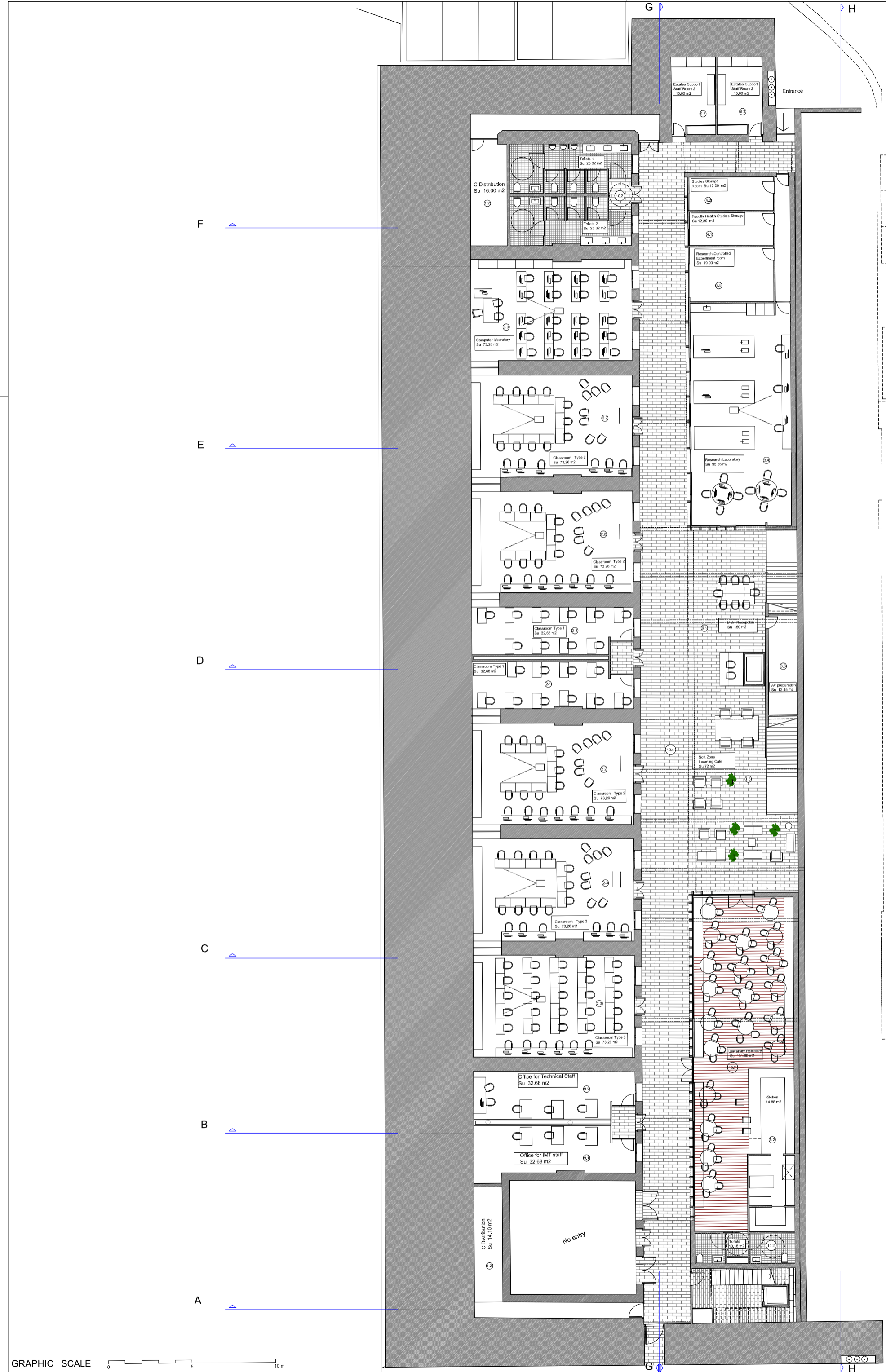
GRAPHIC SCALE

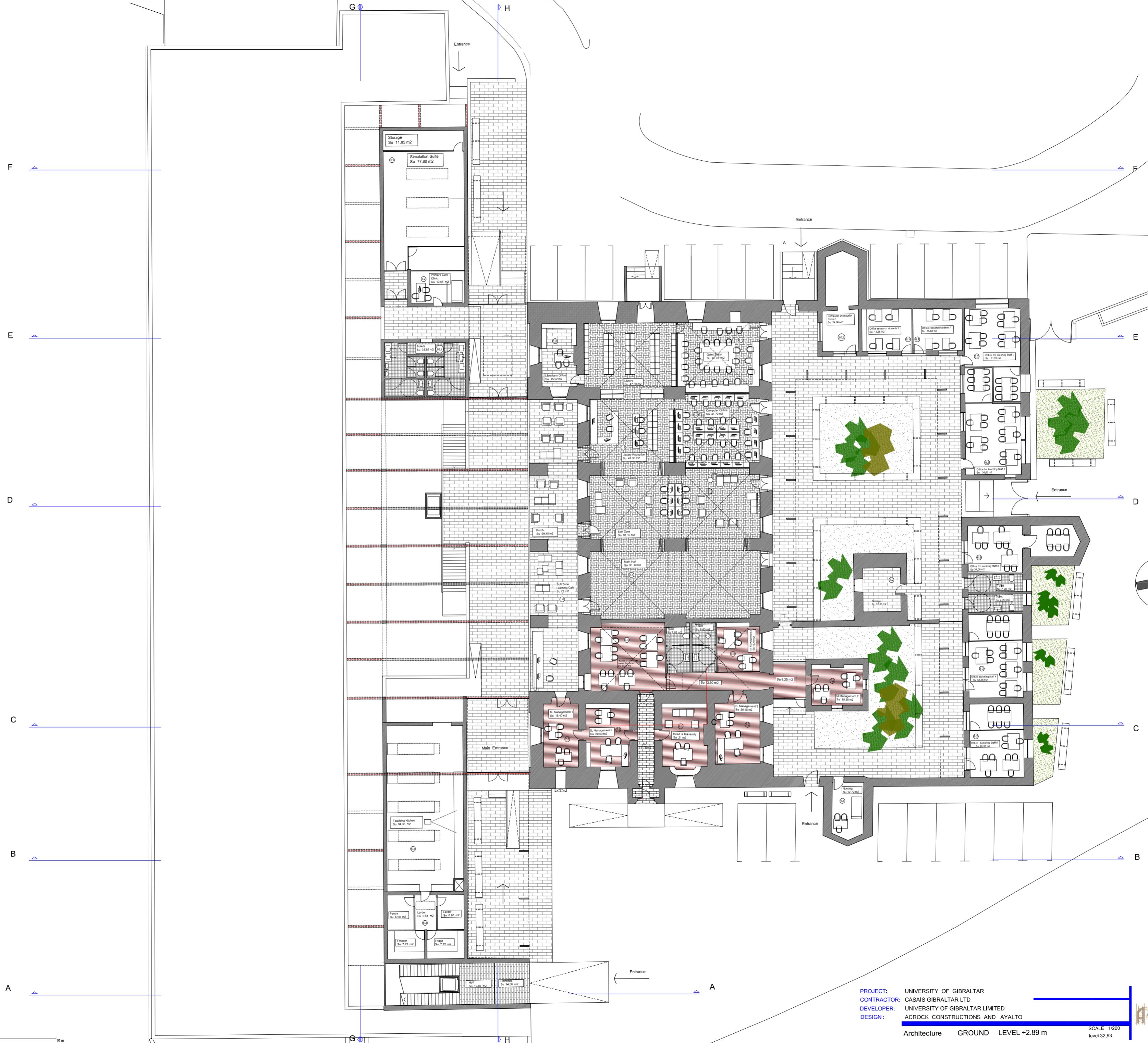
UNIVERSITY OF GIBRALTAR
 CASAIS GIBRALTAR LTD
 DEVELOPER: UNIVERSITY OF GIBRALTAR LIMITED
 DESIGN: ACROCK CONSTRUCTIONS AND AYALTO

Architecture ROOF PLAN LEVEL +9.35 m

SCALE 1/400
 level 39.39

DECEMBER 2014
 AYALTO
 A-04





Entrance

Entrance

Entrance

Entrance

Entrance

F

E

D

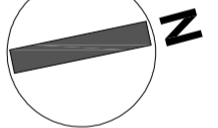
C

B

A

G

H





GRAPHIC SCALE 0 5 10 m

PROJECT: UNIVERSITY OF GIBRALTAR
 CONTRACTOR: CASAIS GIBRALTAR LTD
 DEVELOPER: UNIVERSITY OF GIBRALTAR LIMITED
 DESIGN: ACROCK CONSTRUCTIONS AND AYALTO

Architecture FIRST LEVEL +6.5 m

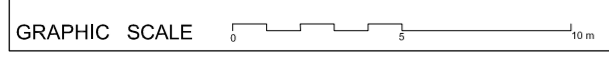
SCALE 1/200
 level 37.50



DECEMBER 2014

Study Report

A-07



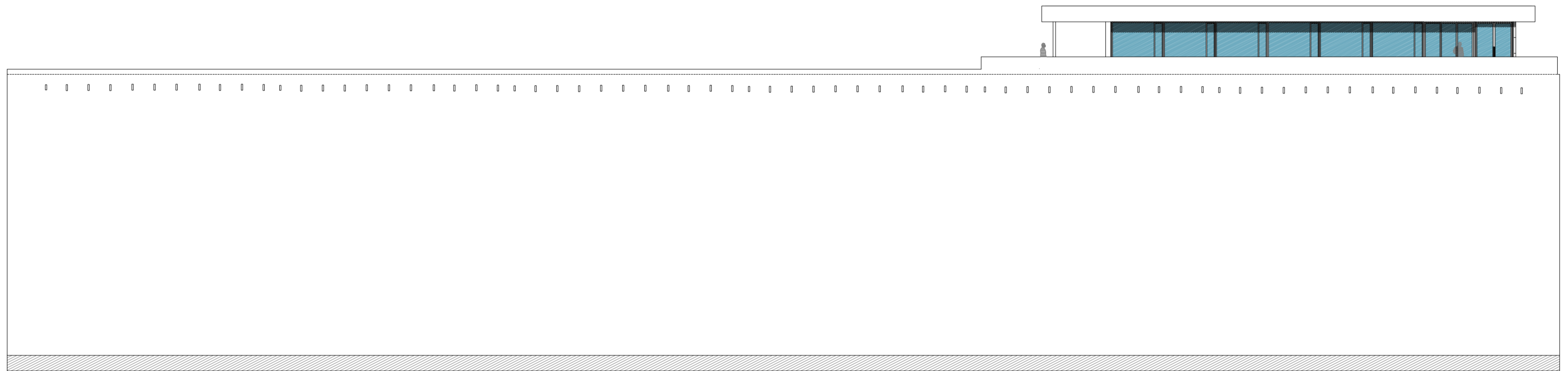
PROJECT: UNIVERSITY OF GIBRALTAR
 CONTRACTOR: CASAIS GIBRALTAR LTD
 DEVELOPER: UNIVERSITY OF GIBRALTAR LIMITED
 DESIGN: ACROCK CONSTRUCTIONS AND AYALTO

SCALE 1/200
level 37.50



DECEMBER 2014
 DRAFT
A-08

Architecture ROOF PLAN



SOUTH ELEVATION



GRAPHIC SCALE 0 5 10m

PROJECT: UNIVERSITY OF GIBRALTAR
 CONTRACTOR: CASAIS GIBRALTAR LTD
 DEVELOPER: UNIVERSITY OF GIBRALTAR LIMITED
 DESIGN: ACROCK CONSTRUCTIONS AND AYALTO

Architecture SECTION G2-G2 SOUTH ELEVATIONS

SCALE 1/200

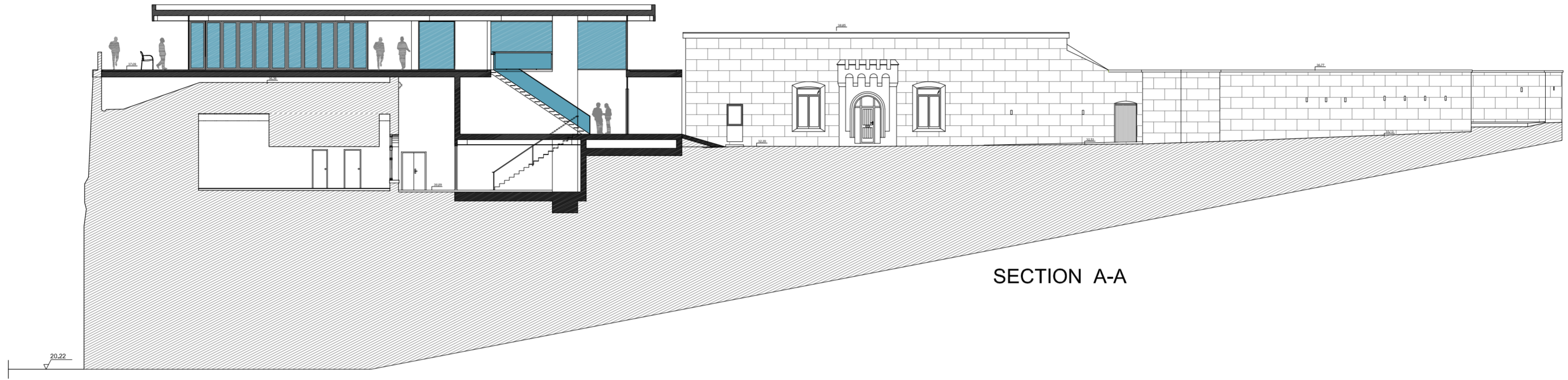


DECEMBER 2014

DRAFT

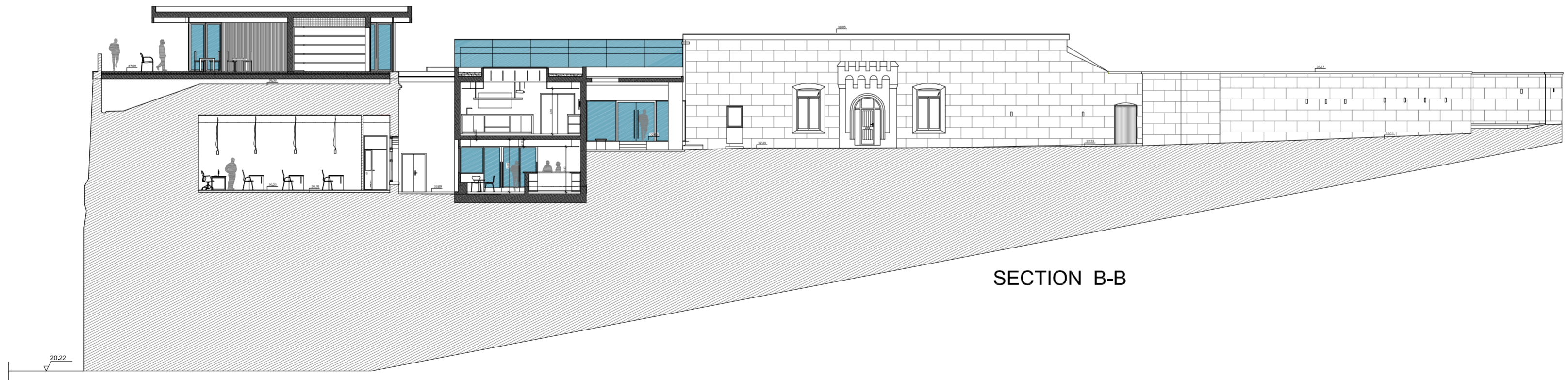
A-09

+10.25 m
 +8.41 m
 +6.66 m
 +5.40 m
 +5.96 m
 +4.25 m
 +3.20 m
 +0.10 m
 +0.00 m
 -0.60 m



SECTION A-A

+10.25 m
 +8.41 m
 +6.66 m
 +5.40 m
 +5.96 m
 +4.25 m
 +3.20 m
 +0.10 m
 +0.00 m
 -0.60 m



SECTION B-B

GRAPHIC SCALE 0 5 10 m

PROJECT: UNIVERSITY OF GIBRALTAR
 CONTRACTOR: CASAIS GIBRALTAR LTD
 DEVELOPER: UNIVERSITY OF GIBRALTAR LIMITED
 DESIGN: ACROCK CONSTRUCTIONS AND AYALTO

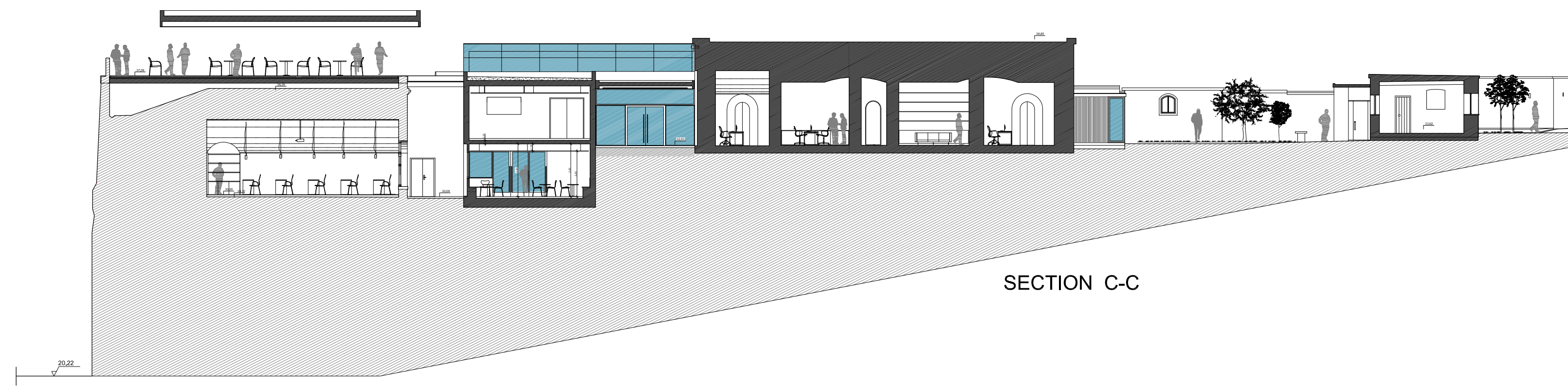
Architecture SECTIONS A-A B-B

SCALE 1/200



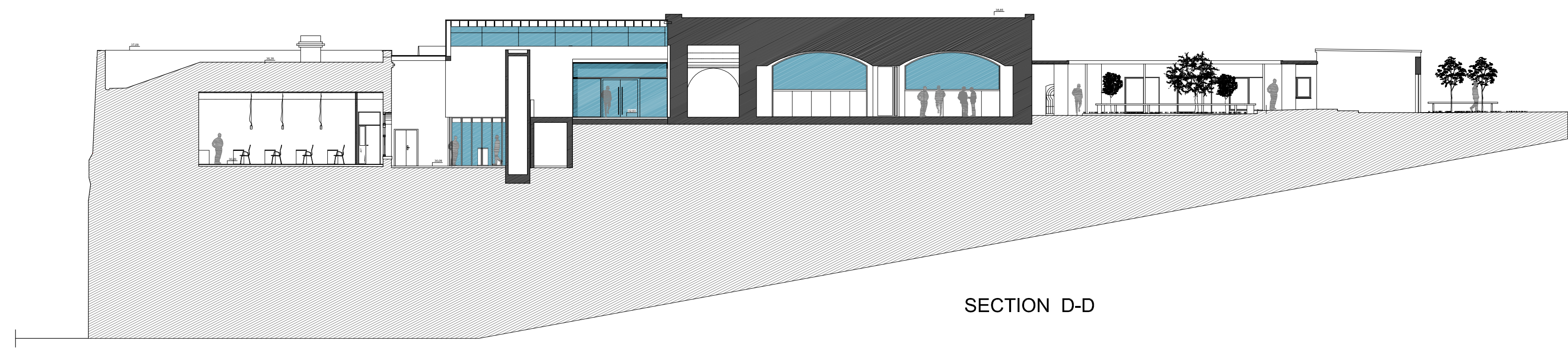
DECEMBER 2014
 DRAFT
 A-10

+10.25 m
 +8.41 m
 +6.66 m
 +6.40 m
 +5.96 m
 +4.25 m
 +3.20 m
 +0.10 m
 +0.00 m
 -0.60 m



SECTION C-C

+8.41 m
 +6.88 m
 +6.40 m
 +5.96 m
 +3.20 m
 +0.10 m
 +0.00 m
 -0.60 m



SECTION D-D

GRAPHIC SCALE 0 5 10 m

PROJECT: UNIVERSITY OF GIBRALTAR
 CONTRACTOR: CASAIS GIBRALTAR LTD
 DEVELOPER: UNIVERSITY OF GIBRALTAR LIMITED
 DESIGN: ACROCK CONSTRUCTIONS AND AYALTO

Architecture SECTIONS C-C D-D

SCALE 1/200

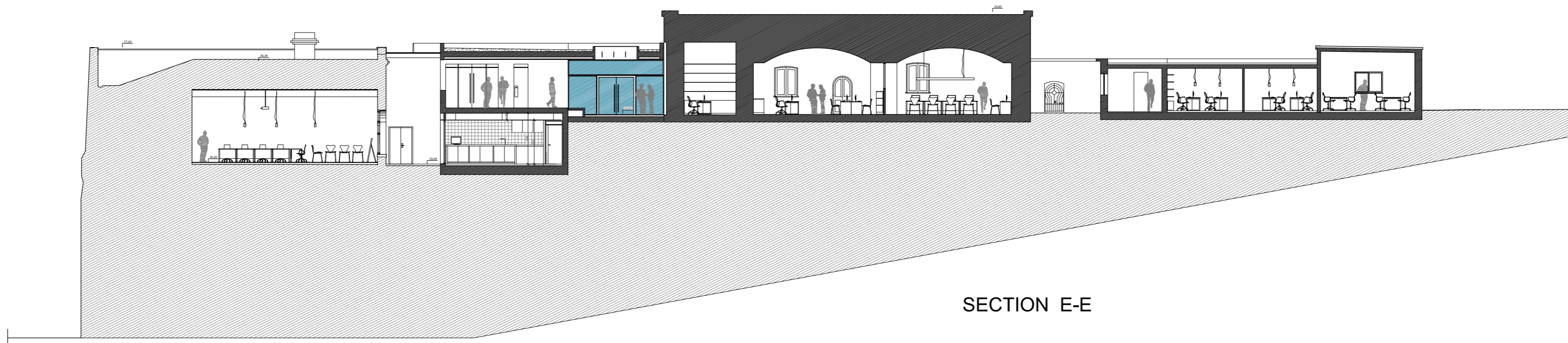


DECEMBER 2014
 DRAFT
 A-11

+8.41 m
 +6.88 m
 +6.40 m
 +5.96 m

 +3.30 m

 +0.10 m
 +0.00 m
 -0.60 m

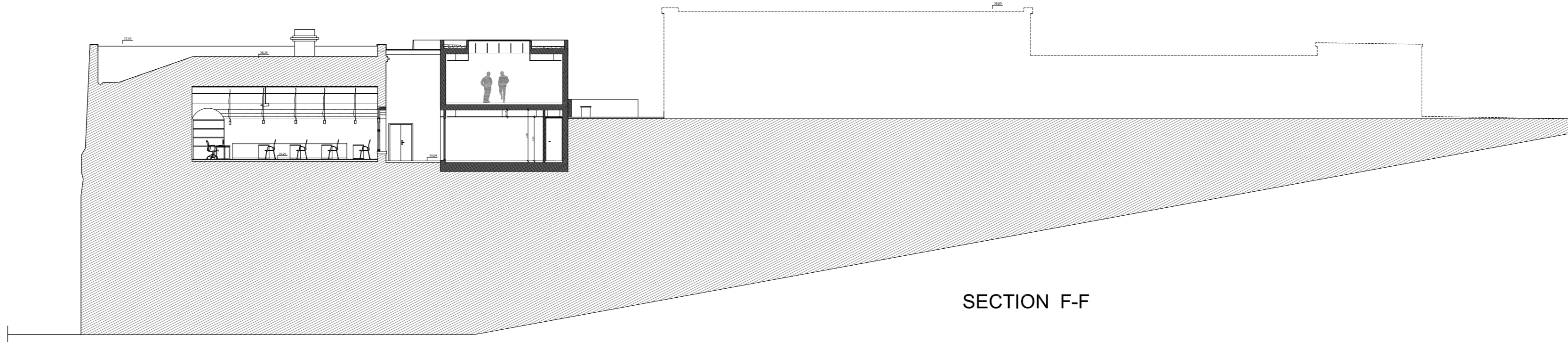


SECTION E-E

+8.41 m
 +6.88 m
 +6.40 m
 +5.96 m

 +3.30 m


 +0.10 m
 +0.00 m
 -0.60 m



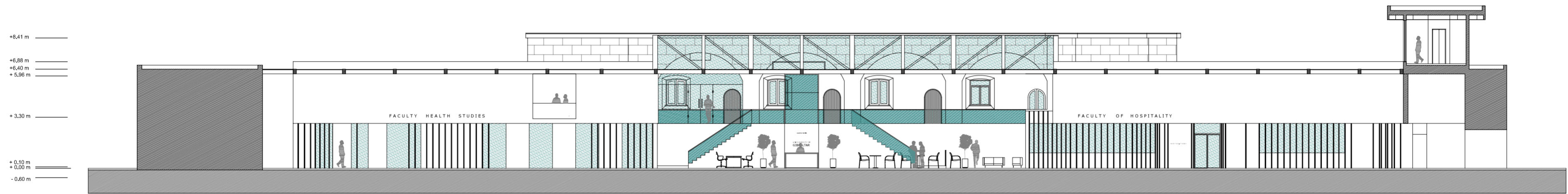
SECTION F-F

GRAPHIC SCALE 0 5 10 m

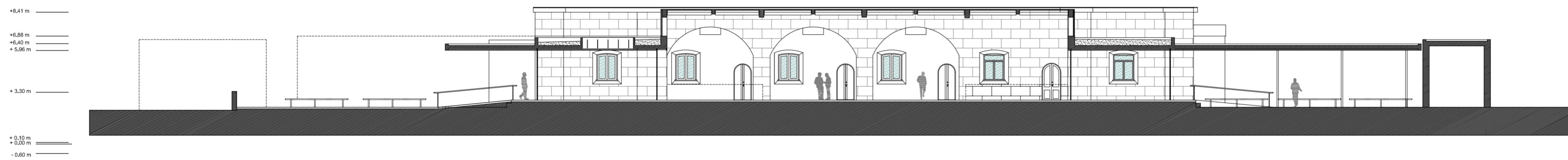
PROJECT: UNIVERSITY OF GIBRALTAR
 CONTRACTOR: CASAIS GIBRALTAR LTD
 DEVELOPER: UNIVERSITY OF GIBRALTAR LIMITED
 DESIGN: ACROCK CONSTRUCTIONS AND AYALTO

SCALE 1/200


DECEMBER 2014
 DRAFT
A-12



SECTION G-G



SECTION H-H



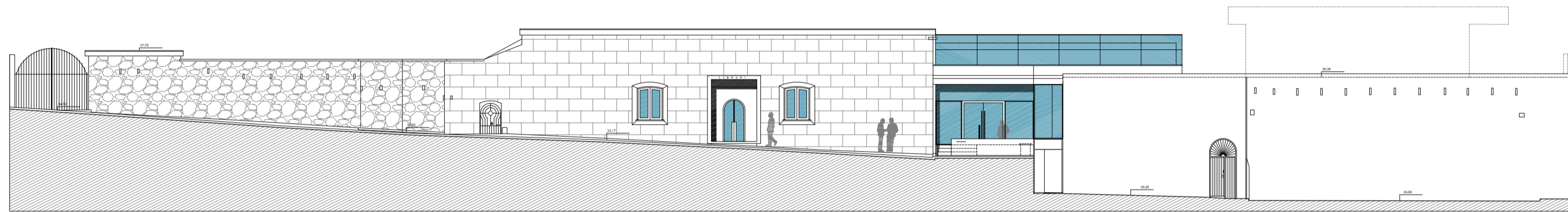
PROJECT: UNIVERSITY OF GIBRALTAR
 CONTRACTOR: CASAIS GIBRALTAR LTD
 DEVELOPER: UNIVERSITY OF GIBRALTAR LIMITED
 DESIGN: ACROCK CONSTRUCTIONS AND AYALTO

Architecture SECTIONS G-G H-H

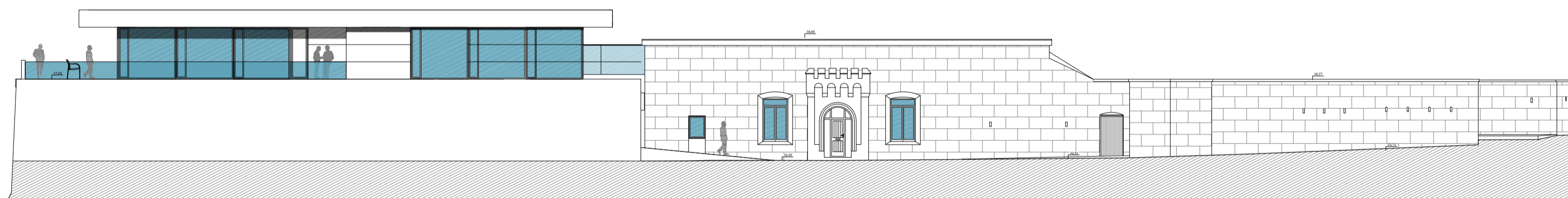
SCALE 1/200



DECEMBER 2014
 DRAFT
 A-13



WEST ELEVATION



EAST ELEVATION

GRAPHIC SCALE 0 5 10 m

PROJECT: UNIVERSITY OF GIBRALTAR
 CONTRACTOR: CASAIS GIBRALTAR LTD
 DEVELOPER: UNIVERSITY OF GIBRALTAR LIMITED
 DESIGN: ACROCK CONSTRUCTIONS AND AYALTO

Architecture EAST WEST ELEVATIONS

SCALE 1/200



DECEMBER 2014

DRIFT
 A-14