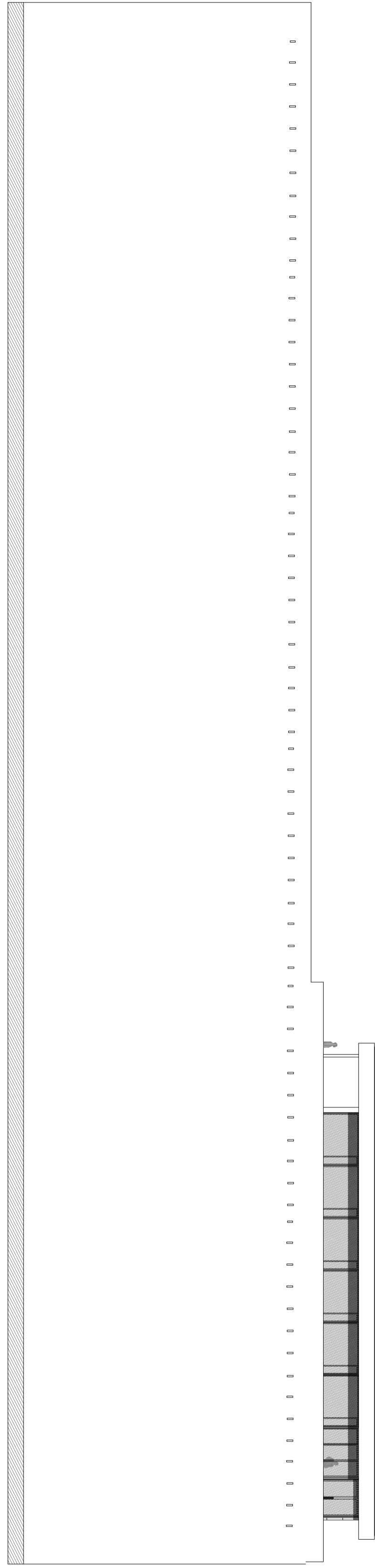
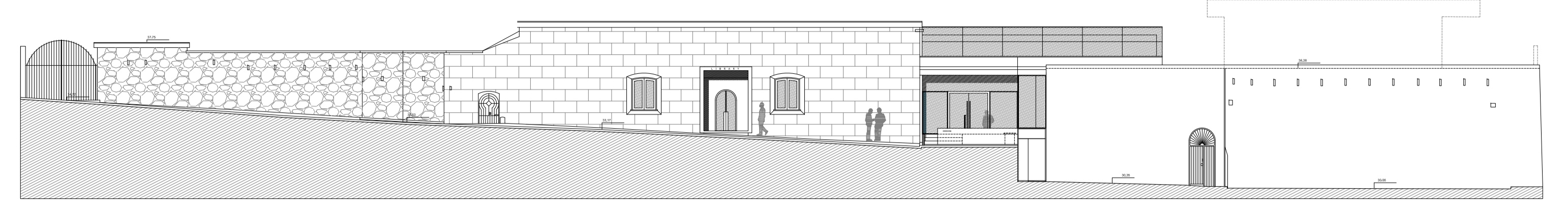


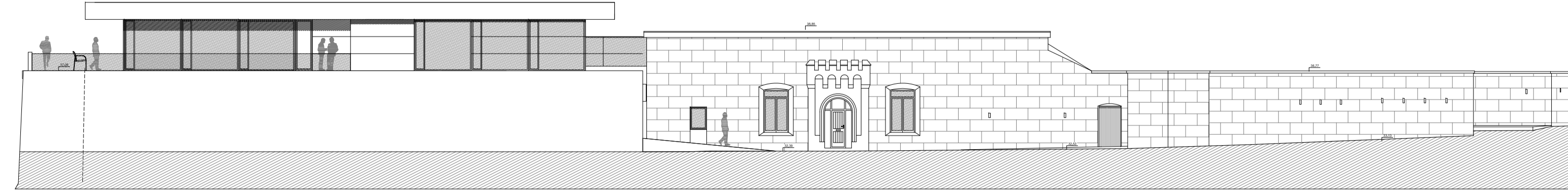
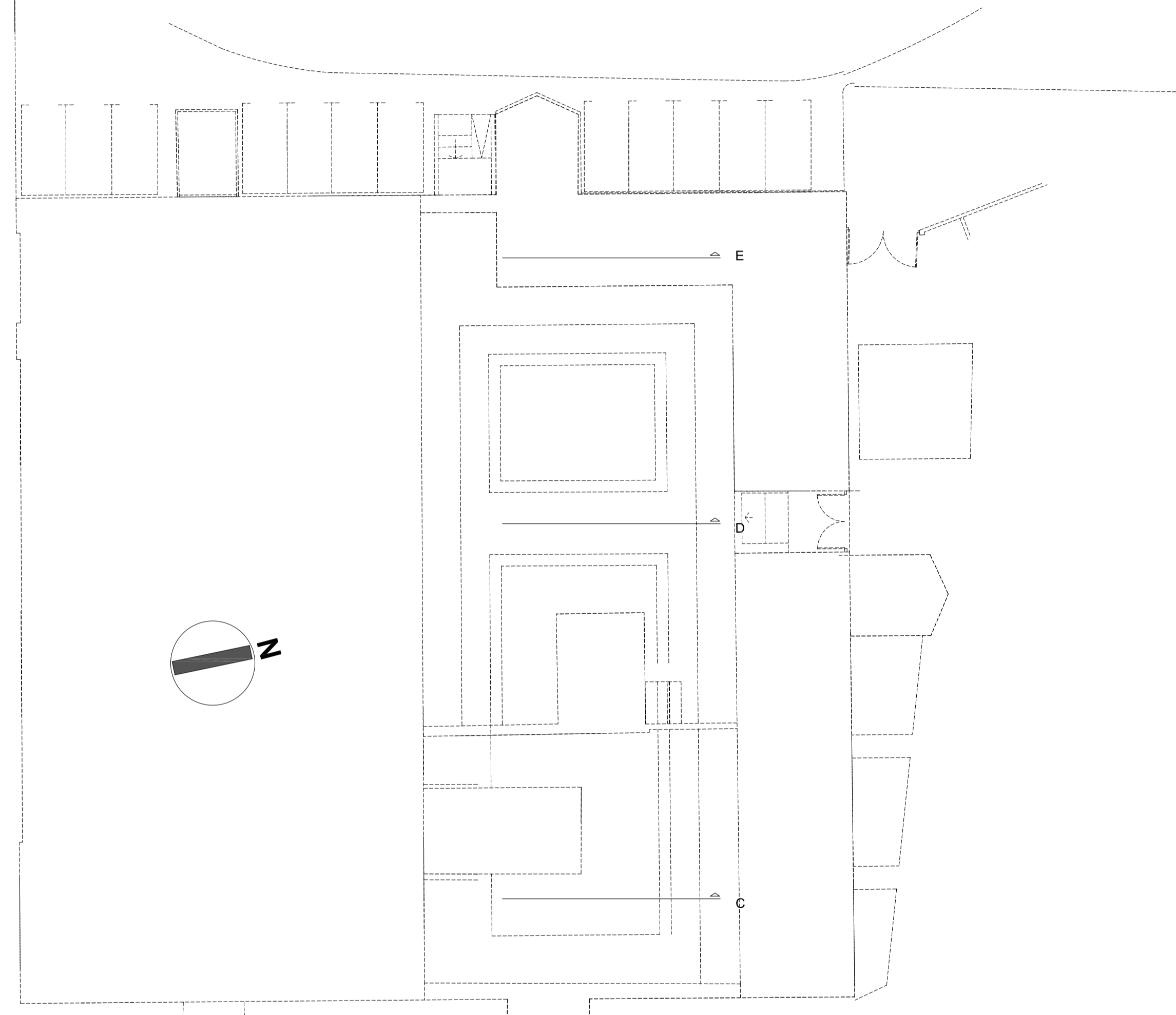
SOUTH ELEVATION



Basement Level



WEST ELEVATION



EAST ELEVATION

**Management Unit**

|                      |                  |
|----------------------|------------------|
| Head of University   | 21.00 m2         |
| Senior Management 1  | 20.60 m2         |
| Senior Management 2  | 20.45 m2         |
| Middle Management 1  | 16.40 m2         |
| Middle Management 2  | 15.30 m2         |
| Middle Management 3  | 15.40 m2         |
| Finance & Commercial |                  |
| Human Resources      | 37.20 m2         |
| Toilets              | 16.55 m2         |
| Main Entrance        | 9.78 m2          |
| Hall                 | 8.25 m2          |
| Corridor             | 12.50 m2         |
| Soft Zone            | 91.10 m2         |
| <b>Total</b>         | <b>284.53 m2</b> |

**Library**

|                           |                  |
|---------------------------|------------------|
| Library Reception         | 47.30 m2         |
| Librarians Office & Store | 15.92 m2         |
| Computer/Online exam room | 41.72 m2         |
| Seminar Room              | 46.30 m2         |
| Quiet Study area          | 45.78 m2         |
| Lobby/Main Hall           | 91.10 m2         |
| Porch                     | 99.40 m2         |
| <b>Total</b>              | <b>387.52 m2</b> |

**Academic Staff**

|   |                  |
|---|------------------|
| Offices for research students             | 15.68 m2         |
| Offices for research students             | 15.68 m2         |
| Offices for teaching staff of faculties 1 | 31.20 m2         |
| Offices teaching staff faculties 2        | 36.66 m2         |
| Offices teaching staff faculties 3        | 31.00 m2         |
| Offices teaching staff faculties 4        | 33.56 m2         |
| Offices teaching staff faculties 5        | 29.35 m2         |
| Storage                                   | 12.30 m2         |
| Toilets                                   | 14.40 m2         |
| <b>Total</b>                              | <b>219.83 m2</b> |

**Common Teaching Facilities**

|  |                  |
|--|------------------|
| Classrooms ( 10 students 2 units) 2x32,68=65,36 m2 |                  |
| Classrooms ( 20 students 3 units) 3x73,26=219,78m2 |                  |
| Classrooms ( 30 students 3units) 2x73,26=146,52m2  |                  |
| Toilets 1  | 25.32 m2         |
| Toilet 2   | 25.32 m2         |
| <b>Total</b>                                       | <b>482.30 m2</b> |

**University Restaurant**

|                       |                  |
|-----------------------|------------------|
| University restaurant | 147.10 m2        |
| Kitchen               | 48.22 m2         |
| Toilets               | 5.70 m2          |
| Toilets               | 15.00 m2         |
| <b>Total</b>          | <b>216.02 m2</b> |

**Offices for Support Staff**

|                              |                  |
|------------------------------|------------------|
| Office for IMT staff         | 32.68 m2         |
| Office for technical staff   | 32.68 m2         |
| Nursing station              | 12.72 m2         |
| Estates Support Staff room 1 | 15 m2            |
| Estates Support Staff room 2 | 15 m2            |
| <b>Total</b>                 | <b>108.08 m2</b> |

**Other Spaces**

|                              |                 |
|------------------------------|-----------------|
| Computer distribution room   | 24.06 m2        |
| Computer distribution room 2 | 24.06 m2        |
| Storage                      | 24.06 m2        |
| <b>Total</b>                 | <b>18.12 m2</b> |

**Faculty Health Studies & Laboratories**

|   |                  |
|---|------------------|
| Primary care clinic                       | 12.05 m2         |
| Computer Laboratory                       | 73.26 m2         |
| Research controlled experiment room       | 19.90 m2         |
| Research Laboratory                       | 95.86 m2         |
| Faculty Health Studies Simulation suite   | 77.80 m2         |
| Storage                                   | 11.85 m2         |
| Faculty Health studies storage room       | 12.20 m2         |
| Special storage room restorant laboratory | 42.28 m2         |
| Toilets                                   | 33.65 m2         |
| <b>Total</b>                              | <b>348.77 m2</b> |

**School of Hospitality**

|                                    |                  |
|------------------------------------|------------------|
| Pantry/larder/fridge/freezer rooms | 34.78 m2         |
| Teaching Kitchen and serve         | 94.36 m2         |
| <b>Total</b>                       | <b>129.14 m2</b> |

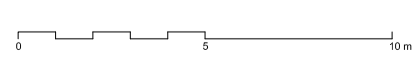
**Administrative Areas/ Offices**

|                              |                  |
|------------------------------|------------------|
| Reception Staff Office       |                  |
| Av preparation /photocopying | 12.45 m2         |
| Main reception               | 150 m2           |
| Accommodation services       |                  |
| <b>Total</b>                 | <b>162.45 m2</b> |

**University Refectory**

|                         |                  |
|-------------------------|------------------|
| University refectory    | 131.60 m2        |
| Kitchen                 | 14.88 m2         |
| Toilets                 | 13.18 m2         |
| Soft Zone-Learning Cafe | 72 m2            |
| <b>Total</b>            | <b>231.66 m2</b> |

GRAPHIC SCALE



PROJECT: UNIVERSITY OF GIBRALTAR  
 DEVELOPER: ACROCK & CASAS GI LIMITED  
 ARCHITECTS: XAVIER FERNANDO OZORES PARDO PEDRO CARCELÉN FERNÁNDEZ  
 Architecture BASEMENT ELEVATIONS SOUTH WEST AND EAST

SCALE 1:200  
 JANUARY 2019  
 A-01



| University Restaurant |                             |
|-----------------------|-----------------------------|
| University restaurant | 147,10 m <sup>2</sup>       |
| Kitchen               | 48,22 m <sup>2</sup>        |
| Toilets               | 5,70 m <sup>2</sup>         |
| <b>Total</b>          | <b>216,02 m<sup>2</sup></b> |

| Other Spaces                 |                            |
|------------------------------|----------------------------|
| Computer distribution room   | 24,06 m <sup>2</sup>       |
| Computer distribution room 2 | 24,06 m <sup>2</sup>       |
| Storage                      | 24,06 m <sup>2</sup>       |
| <b>Total</b>                 | <b>18,12 m<sup>2</sup></b> |

| School of Hospitality              |                             |
|------------------------------------|-----------------------------|
| Pantry/larder/fridge/freezer rooms | 34,78 m <sup>2</sup>        |
| Teaching Kitchen and serve         | 94,36 m <sup>2</sup>        |
| <b>Total</b>                       | <b>129,14 m<sup>2</sup></b> |

| Management Unit      |                             |
|----------------------|-----------------------------|
| Head of University   | 21,00 m <sup>2</sup>        |
| Senior Management 1  | 20,60 m <sup>2</sup>        |
| Senior Management 2  | 20,45 m <sup>2</sup>        |
| Middle Management 1  | 16,40 m <sup>2</sup>        |
| Middle Management 2  | 15,30 m <sup>2</sup>        |
| Middle Management 3  | 15,40 m <sup>2</sup>        |
| Finance & Commercial |                             |
| Human Resources      | 37,20 m <sup>2</sup>        |
| Toilets              | 16,55 m <sup>2</sup>        |
| Main Entrance        | 9,78 m <sup>2</sup>         |
| Hall                 | 8,25 m <sup>2</sup>         |
| Corridor             | 12,50 m <sup>2</sup>        |
| Soft Zone            | 91,10 m <sup>2</sup>        |
| <b>Total</b>         | <b>284,53 m<sup>2</sup></b> |

| Library                   |                             |
|---------------------------|-----------------------------|
| Library Reception         | 47,30 m <sup>2</sup>        |
| Librarians Office & Store | 15,92 m <sup>2</sup>        |
| Computer/Online exam room | 41,72 m <sup>2</sup>        |
| Seminar Room              | 46,30 m <sup>2</sup>        |
| Quiet Study area          | 45,78 m <sup>2</sup>        |
| Lobby/Main Hall           | 91,10 m <sup>2</sup>        |
| Porch                     | 99,40 m <sup>2</sup>        |
| <b>Total</b>              | <b>387,52 m<sup>2</sup></b> |

| Academic Staff                            |                             |
|---|-----------------------------|
| Offices for research students             | 15,68 m <sup>2</sup>        |
| Offices for research students             | 15,68 m <sup>2</sup>        |
| Offices for teaching staff of faculties 1 | 31,20 m <sup>2</sup>        |
| Offices teaching staff faculties 2        | 36,66 m <sup>2</sup>        |
| Offices teaching staff faculties 3        | 31,00 m <sup>2</sup>        |
| Offices teaching staff faculties 4        | 33,56 m <sup>2</sup>        |
| Offices teaching staff faculties 5        | 29,35 m <sup>2</sup>        |
| Storage                                   | 12,30 m <sup>2</sup>        |
| Toilets                                   | 14,40 m <sup>2</sup>        |
| <b>Total</b>                              | <b>219,63 m<sup>2</sup></b> |

| Common Teaching Facilities                                    |                             |
|---|-----------------------------|
| Classrooms (10 students 2 units) 2x32,68=65,36 m <sup>2</sup> |                             |
| Classrooms (20 students 3 units) 3x73,26=219,78m <sup>2</sup> |                             |
| Classrooms (30 students 3units) 2x73,26=146,52m <sup>2</sup>  |                             |
| Toilets 1   | 25,32 m <sup>2</sup>        |
| Toilet 2  | 25,32 m <sup>2</sup>        |
| <b>Total</b>  | <b>482,30 m<sup>2</sup></b> |

| Offices for Support Staff    |                             |
|------------------------------|-----------------------------|
| Office for IMT staff         | 32,68 m <sup>2</sup>        |
| Office for technical staff   | 32,68 m <sup>2</sup>        |
| Nursing station              | 12,72 m <sup>2</sup>        |
| Estates Support Staff room 1 | 15 m <sup>2</sup>           |
| Estates Support Staff room 2 | 15 m <sup>2</sup>           |
| <b>Total</b>                 | <b>108,08 m<sup>2</sup></b> |

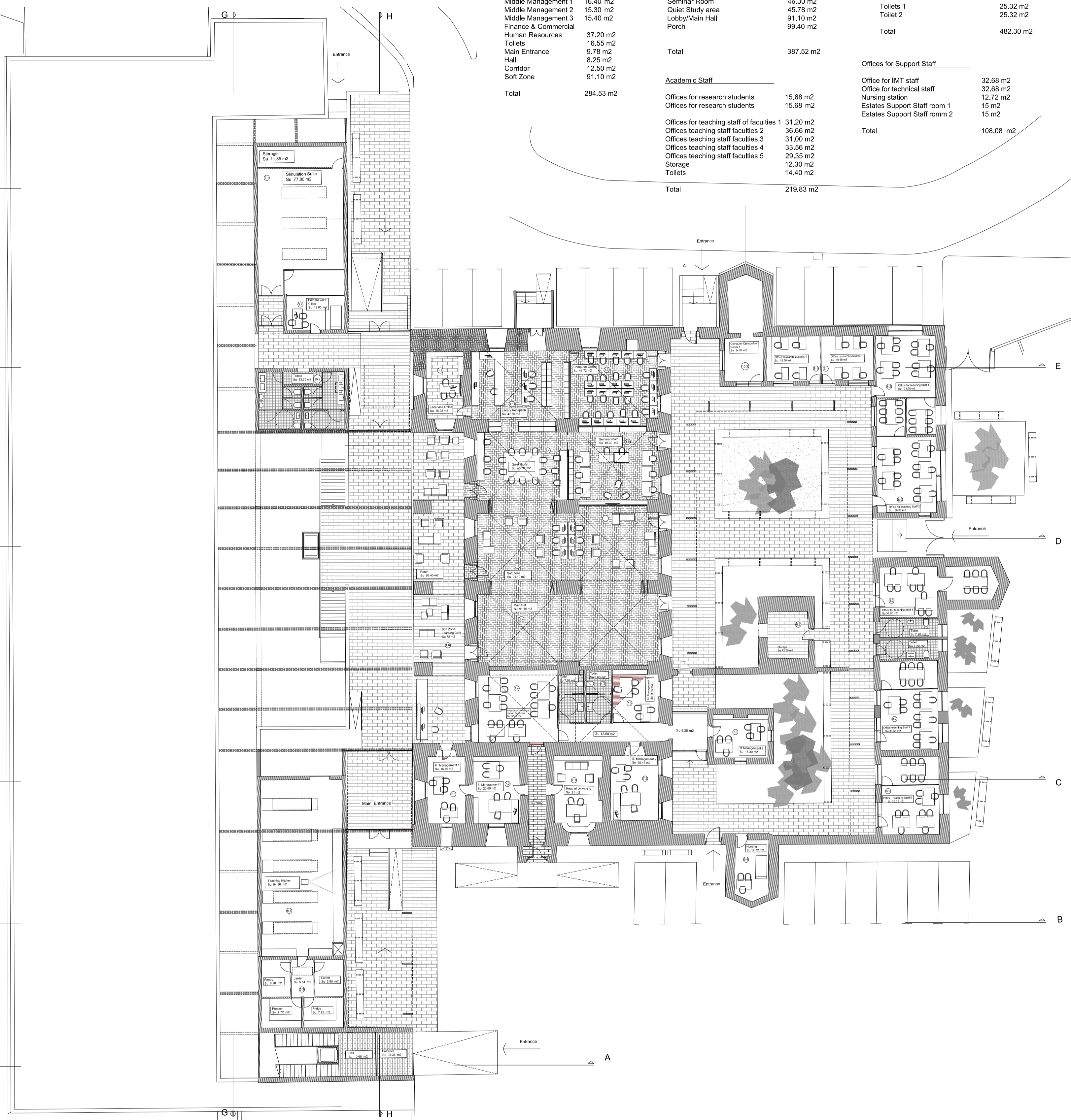
| Faculty Health Studies & Laboratories    |                             |
|--|-----------------------------|
| Primary care clinic                      | 12,05 m <sup>2</sup>        |
| Computer Laboratory                      | 73,26 m <sup>2</sup>        |
| Research controlled experiment room      | 19,90 m <sup>2</sup>        |
| Research Laboratory                      | 95,86 m <sup>2</sup>        |
| Faculty Health Studies Simulation suite  | 77,80 m <sup>2</sup>        |
| Storage                                  | 11,85 m <sup>2</sup>        |
| Faculty Health studies storage room      | 12,20 m <sup>2</sup>        |
| Special storage room research laboratory | 12,20 m <sup>2</sup>        |
| Toilets                                  | 33,65 m <sup>2</sup>        |
| <b>Total</b>                             | <b>348,77 m<sup>2</sup></b> |

| Administrative Areas/ Offices |                             |
|-------------------------------|-----------------------------|
| Reception Staff Office        |                             |
| Av. preparation /photocopying | 12,45 m <sup>2</sup>        |
| Main reception                | 150 m <sup>2</sup>          |
| Accommodation services        |                             |
| <b>Total</b>                  | <b>162,45 m<sup>2</sup></b> |

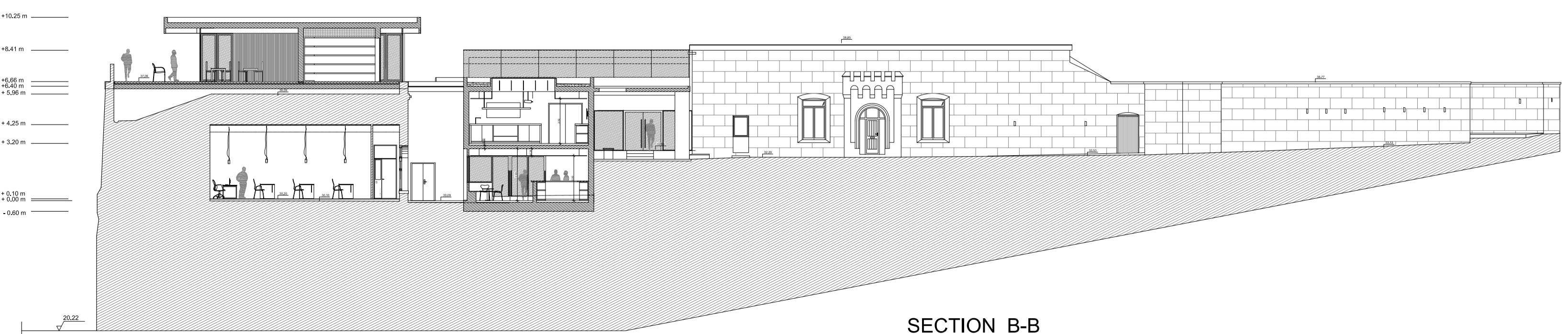
  

| University Refectory    |                             |
|-------------------------|-----------------------------|
| University refectory    | 131,60 m <sup>2</sup>       |
| Kitchen                 | 14,88 m <sup>2</sup>        |
| Toilets                 | 13,18 m <sup>2</sup>        |
| Soft Zone-Learning Cafe | 72 m <sup>2</sup>           |
| <b>Total</b>            | <b>231,66 m<sup>2</sup></b> |



SECTION G-G

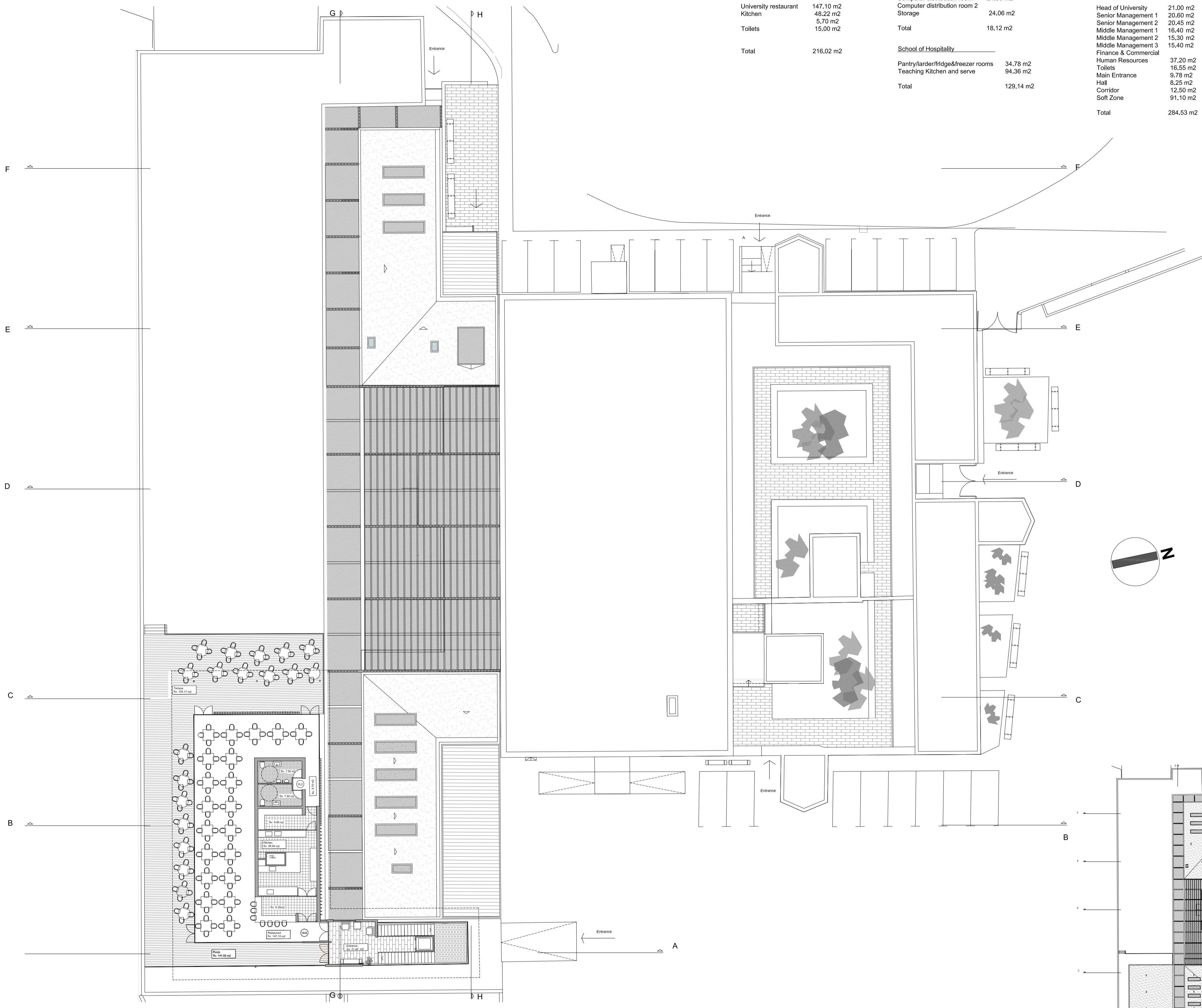
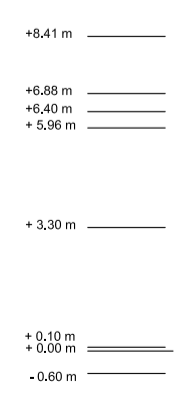
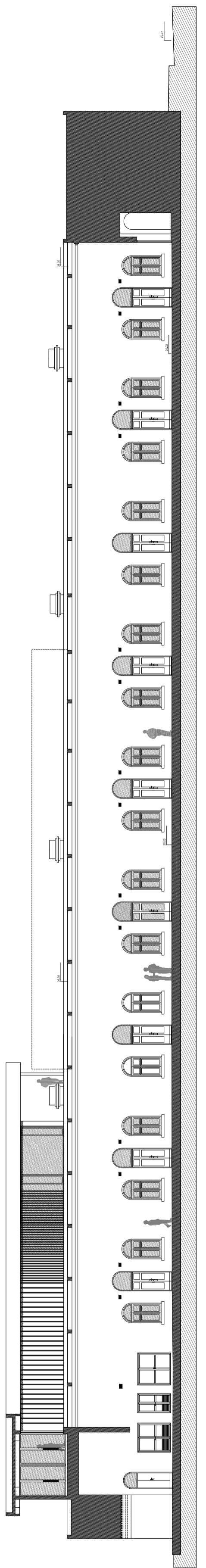
SECTION H-H



GRAPHIC SCALE

SECTION B-B





**University Restaurant**

|                       |                             |
|-----------------------|-----------------------------|
| University restaurant | 147.10 m <sup>2</sup>       |
| Kitchen               | 48.22 m <sup>2</sup>        |
| Toilets               | 5.70 m <sup>2</sup>         |
| Toilets               | 15.00 m <sup>2</sup>        |
| <b>Total</b>          | <b>216.02 m<sup>2</sup></b> |

**Other Spaces**

|                              |                            |
|------------------------------|----------------------------|
| Computer distribution room   | 24.06 m <sup>2</sup>       |
| Computer distribution room 2 | 24.06 m <sup>2</sup>       |
| Storage                      | 24.06 m <sup>2</sup>       |
| <b>Total</b>                 | <b>18.12 m<sup>2</sup></b> |

**School of Hospitality**

|                                    |                             |
|------------------------------------|-----------------------------|
| Pantry/larder/fridge/freezer rooms | 34.78 m <sup>2</sup>        |
| Teaching Kitchen and serve         | 94.36 m <sup>2</sup>        |
| <b>Total</b>                       | <b>129.14 m<sup>2</sup></b> |

**Management Unit**

|                      |                             |
|----------------------|-----------------------------|
| Head of University   | 21.00 m <sup>2</sup>        |
| Senior Management 1  | 20.60 m <sup>2</sup>        |
| Senior Management 2  | 20.45 m <sup>2</sup>        |
| Middle Management 1  | 16.40 m <sup>2</sup>        |
| Middle Management 2  | 15.30 m <sup>2</sup>        |
| Middle Management 3  | 15.40 m <sup>2</sup>        |
| Finance & Commercial | 37.20 m <sup>2</sup>        |
| Human Resources      | 37.20 m <sup>2</sup>        |
| Toilets              | 16.55 m <sup>2</sup>        |
| Main Entrance        | 9.78 m <sup>2</sup>         |
| Hall                 | 8.25 m <sup>2</sup>         |
| Corridor             | 12.50 m <sup>2</sup>        |
| Soft Zone            | 91.10 m <sup>2</sup>        |
| <b>Total</b>         | <b>284.53 m<sup>2</sup></b> |

**Library**

|                           |                             |
|---------------------------|-----------------------------|
| Library Reception         | 47.30 m <sup>2</sup>        |
| Librarians Office & Store | 15.92 m <sup>2</sup>        |
| Computer/Online exam room | 41.72 m <sup>2</sup>        |
| Seminar Room              | 46.30 m <sup>2</sup>        |
| Quiet Study area          | 45.78 m <sup>2</sup>        |
| Lobby/Main Hall           | 91.10 m <sup>2</sup>        |
| Porch                     | 99.40 m <sup>2</sup>        |
| <b>Total</b>              | <b>387.52 m<sup>2</sup></b> |

**Academic Staff**

|  |                             |
|--|-----------------------------|
| Offices for research students          | 15.68 m <sup>2</sup>        |
| Offices for research students          | 15.68 m <sup>2</sup>        |
| Offices for teaching staff faculties 1 | 31.20 m <sup>2</sup>        |
| Offices for teaching staff faculties 2 | 36.66 m <sup>2</sup>        |
| Offices for teaching staff faculties 3 | 31.00 m <sup>2</sup>        |
| Offices for teaching staff faculties 4 | 33.50 m <sup>2</sup>        |
| Offices for teaching staff faculties 5 | 29.35 m <sup>2</sup>        |
| Storage                                | 12.30 m <sup>2</sup>        |
| Toilets                                | 14.40 m <sup>2</sup>        |
| <b>Total</b>                           | <b>219.83 m<sup>2</sup></b> |

**Common Teaching Facilities**

|  |                             |
|--|-----------------------------|
| Classrooms ( 10 students 2 units) 2x32.68=65.36 m <sup>2</sup> |                             |
| Classrooms ( 20 students 3 units) 3x73.26=219.78m <sup>2</sup> |                             |
| Classrooms ( 30 students 3units) 2x73.26=146.52m <sup>2</sup>  |                             |
| Toilets 1  | 25.32 m <sup>2</sup>        |
| Toilet 2   | 25.32 m <sup>2</sup>        |
| <b>Total</b>   | <b>482.30 m<sup>2</sup></b> |

**Offices for Support Staff**

|                              |                             |
|------------------------------|-----------------------------|
| Office for IMT staff         | 32.68 m <sup>2</sup>        |
| Office for technical staff   | 32.68 m <sup>2</sup>        |
| Nursing station              | 12.72 m <sup>2</sup>        |
| Estates Support Staff room 1 | 15 m <sup>2</sup>           |
| Estates Support Staff room 2 | 15 m <sup>2</sup>           |
| <b>Total</b>                 | <b>108.08 m<sup>2</sup></b> |

**Faculty Health Studies & Laboratories**

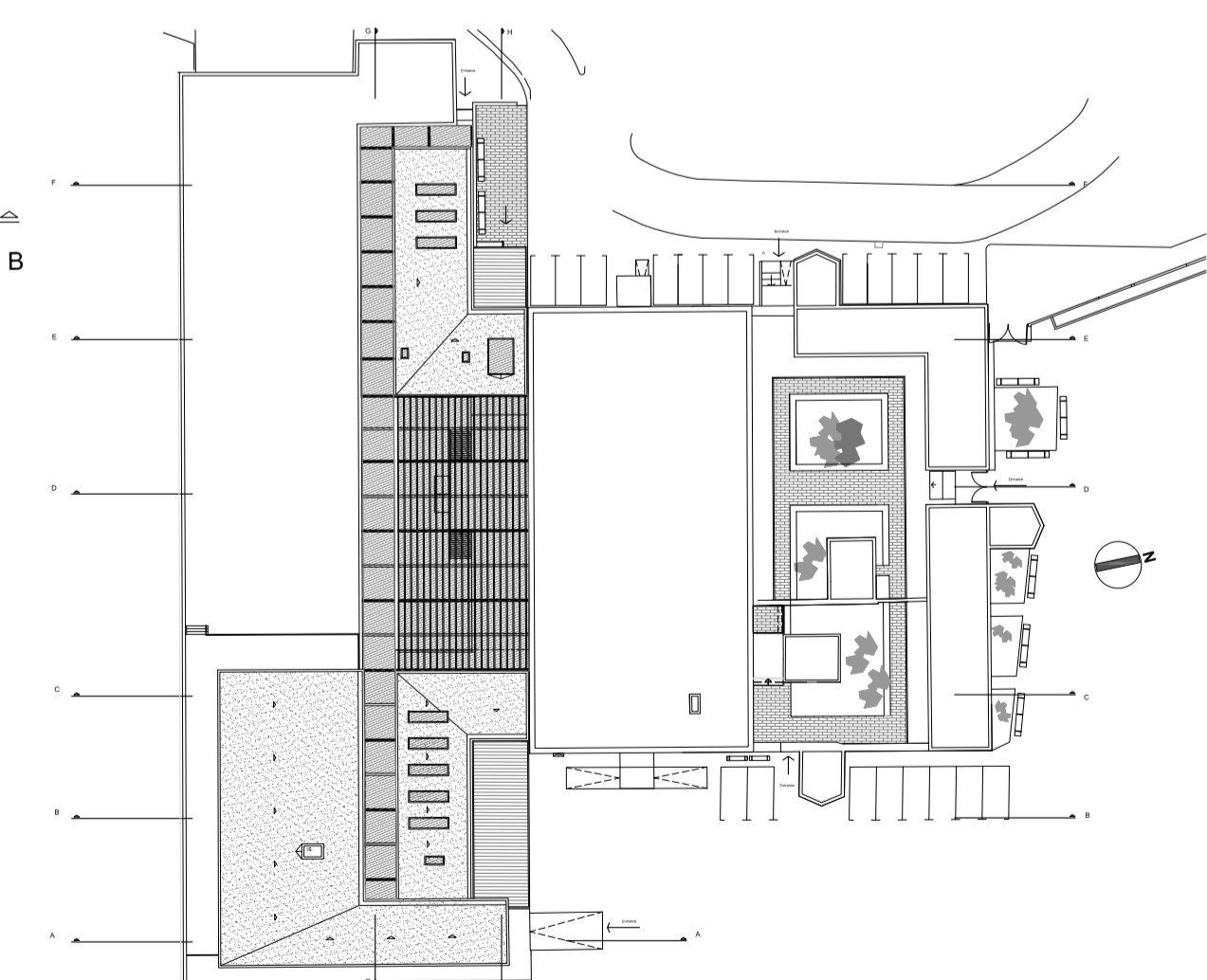
|  |                             |
|--|-----------------------------|
| Primary care clinic                      | 12.05 m <sup>2</sup>        |
| Computer Laboratory                      | 73.26 m <sup>2</sup>        |
| Research cotrolled experiment room       | 19.90 m <sup>2</sup>        |
| Research Laboratory                      | 95.86 m <sup>2</sup>        |
| Faculty Health Studies Simulation suite  | 77.80 m <sup>2</sup>        |
| Storage                                  | 11.85 m <sup>2</sup>        |
| Faculty Health studies storage room      | 12.20 m <sup>2</sup>        |
| Special storage room research laboratory | 12.20 m <sup>2</sup>        |
| Toilets                                  | 33.65 m <sup>2</sup>        |
| <b>Total</b>                             | <b>348.77 m<sup>2</sup></b> |

**Administrative Areas/ Offices**

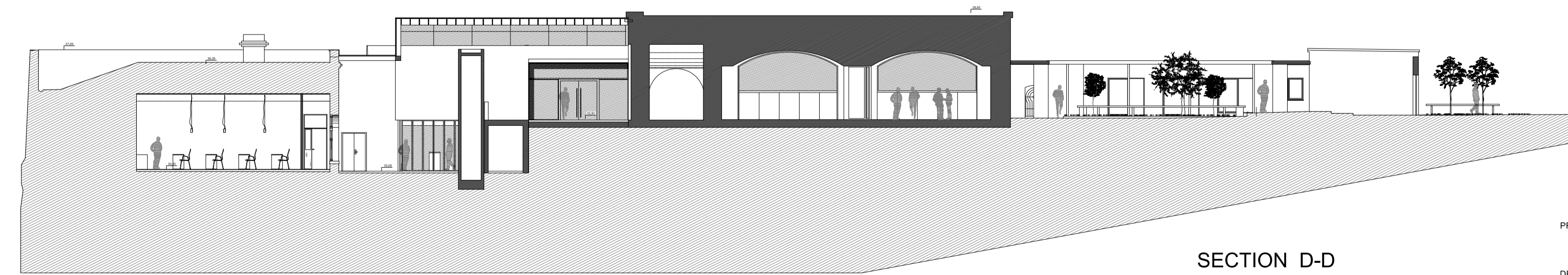
|                               |                             |
|-------------------------------|-----------------------------|
| Reception Staff Office        | 12.45 m <sup>2</sup>        |
| Av. preparation /photocopying | 150 m <sup>2</sup>          |
| Accommodation services        | 162.45 m <sup>2</sup>       |
| <b>Total</b>                  | <b>162.45 m<sup>2</sup></b> |

**University Refectory**

|                         |                             |
|-------------------------|-----------------------------|
| University refectory    | 131.60 m <sup>2</sup>       |
| Kitchen                 | 14.88 m <sup>2</sup>        |
| Toilets                 | 13.18 m <sup>2</sup>        |
| Soft Zone-Learning Cafe | 72 m <sup>2</sup>           |
| <b>Total</b>            | <b>231.66 m<sup>2</sup></b> |



ROOF LEVEL



SECTION D-D

GRAPHIC SCALE