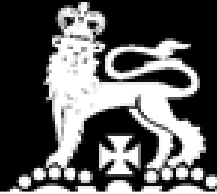


Budget 2017/18

Revenue
£615m

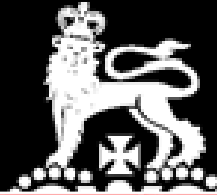


Expenditure
£597m



Government Revenue £ 615m





Government Revenue £ 615m

TAXES
£275.00m

DUTIES TAXES & OTHER RECEIPTS
£171.57m

GAMBLING CHARGES FEES & LOTTERY
£14.79m

RATES & RENTS
£29.00m

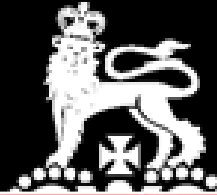
DEPARTMENTAL FEES & RECEIPTS
£121.14m

GOVT EARNINGS
£3.42m

INCOME TAX
£ 155.00m

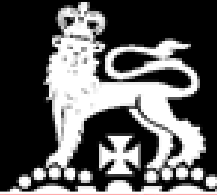
CORPORATION TAX
£ 120.00m





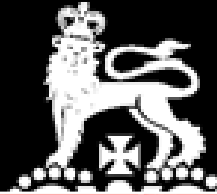
Government Revenue £ 615m



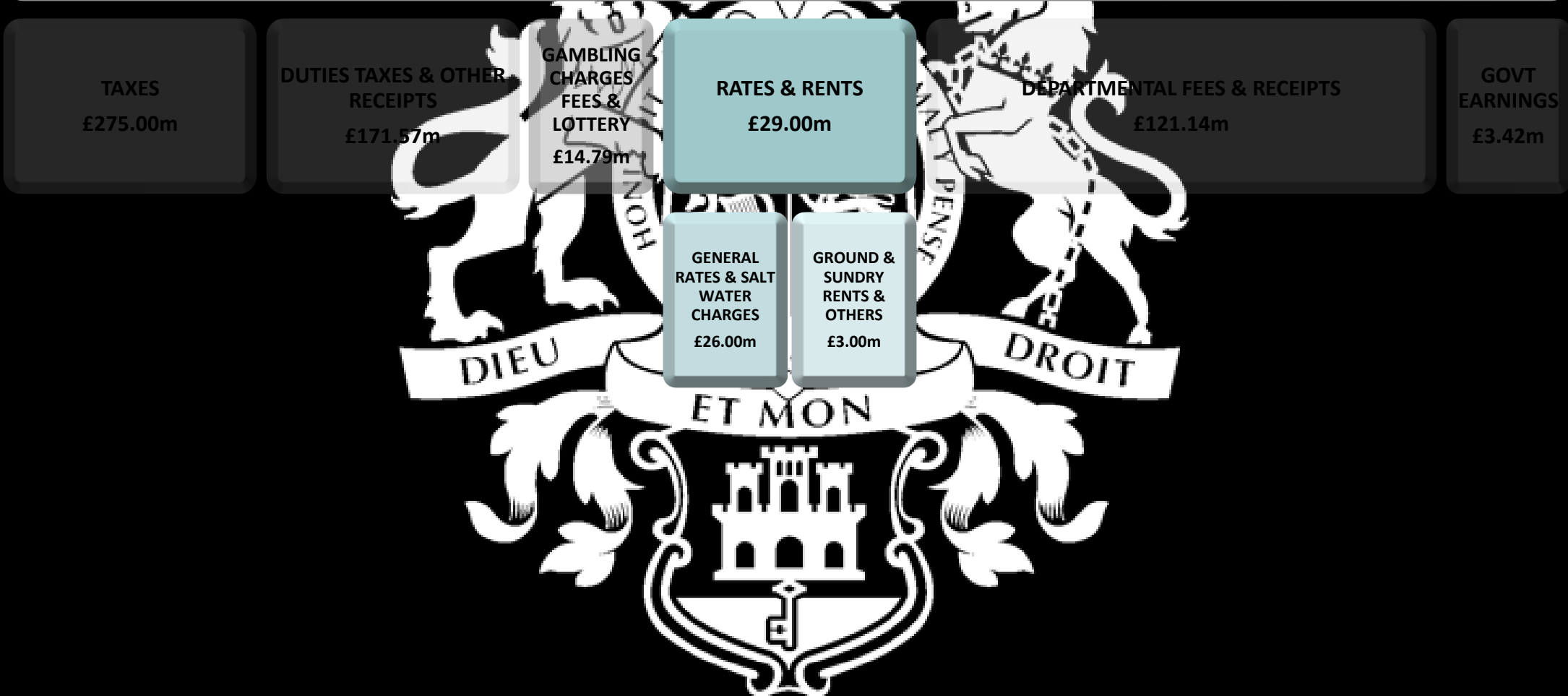


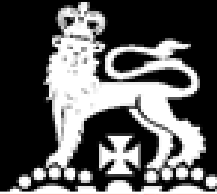
Government Revenue £ 615m



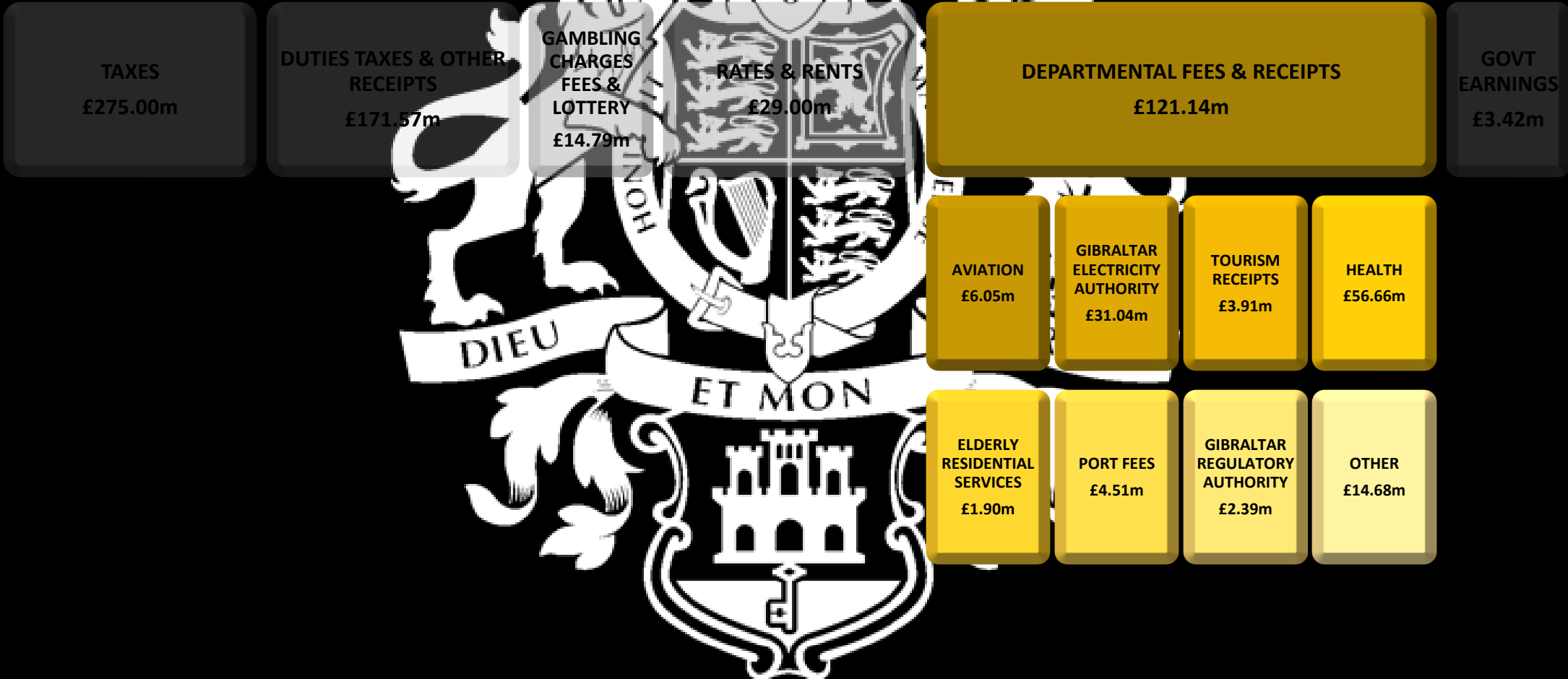


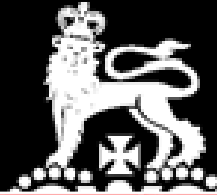
Government Revenue £ 615m



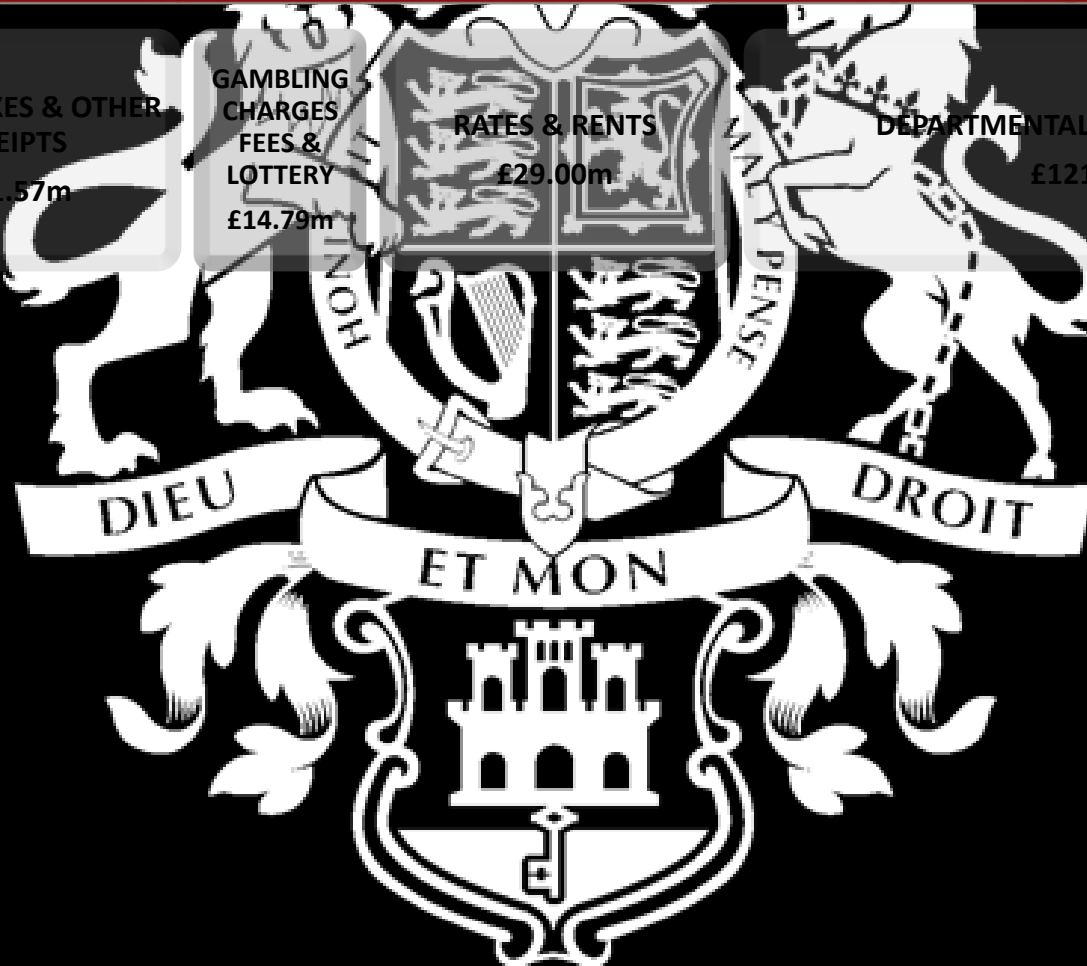


Government Revenue £ 615m

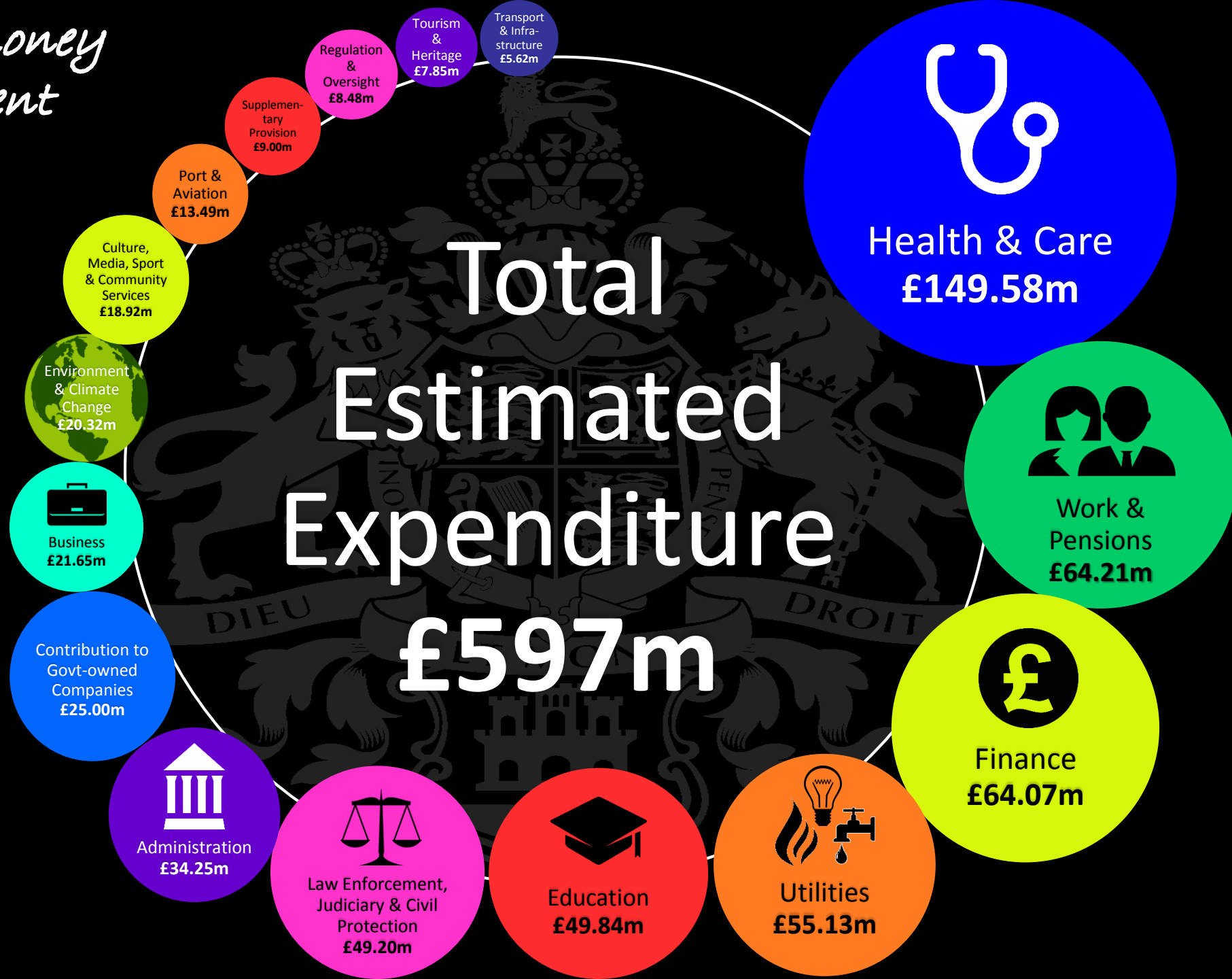


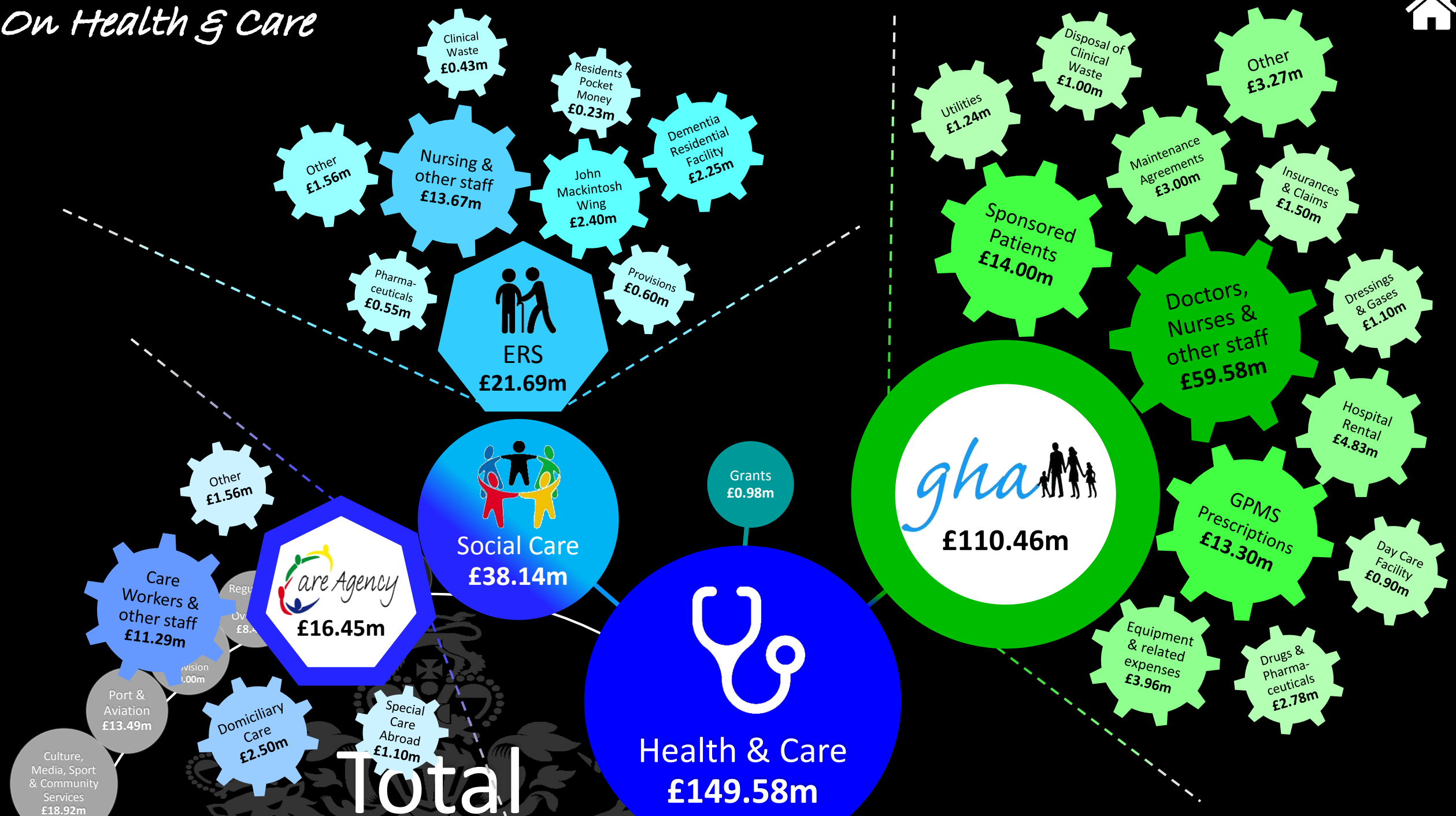


Government Revenue £ 615m



*How your money
will be spent*



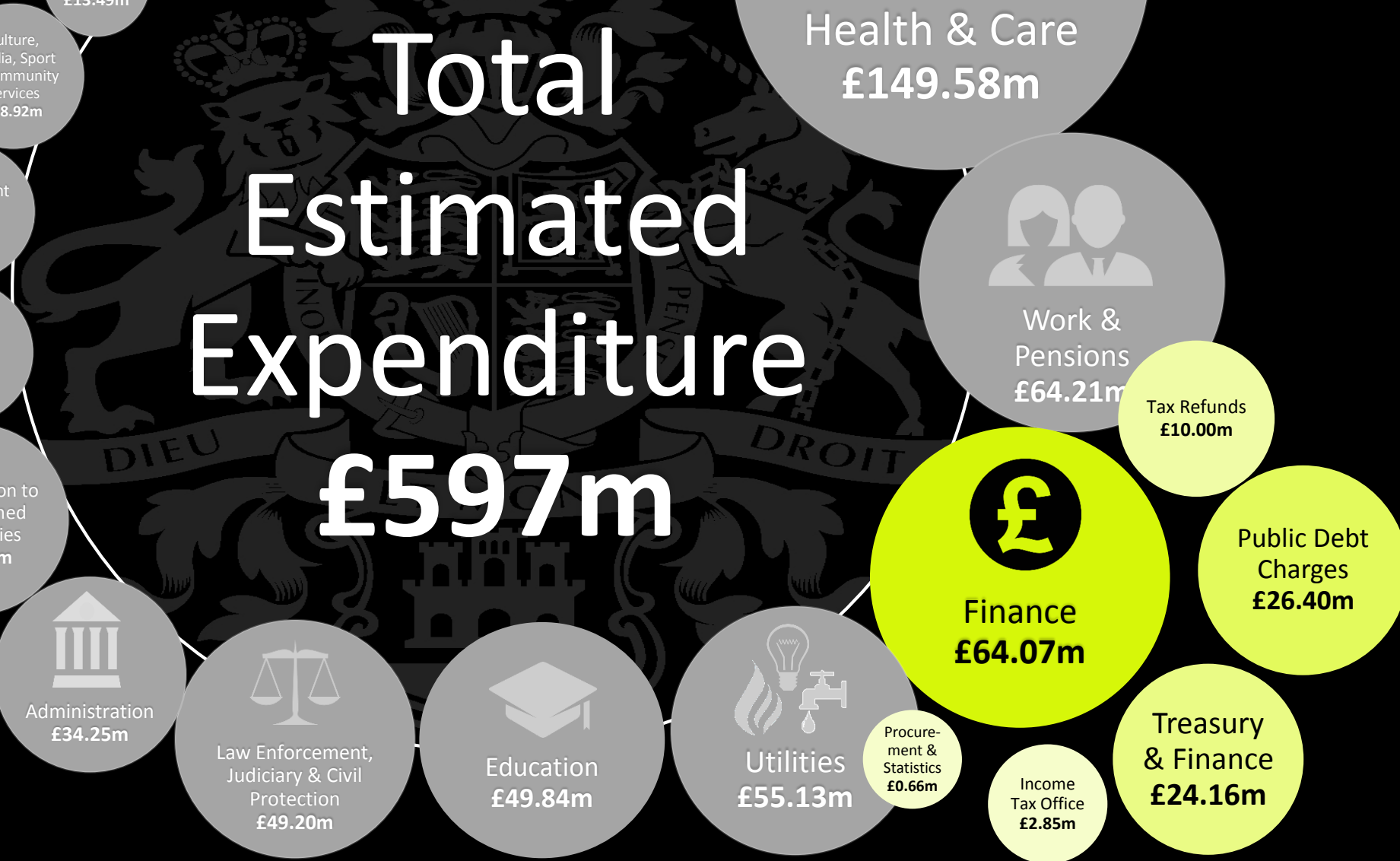




On Works & Pensions

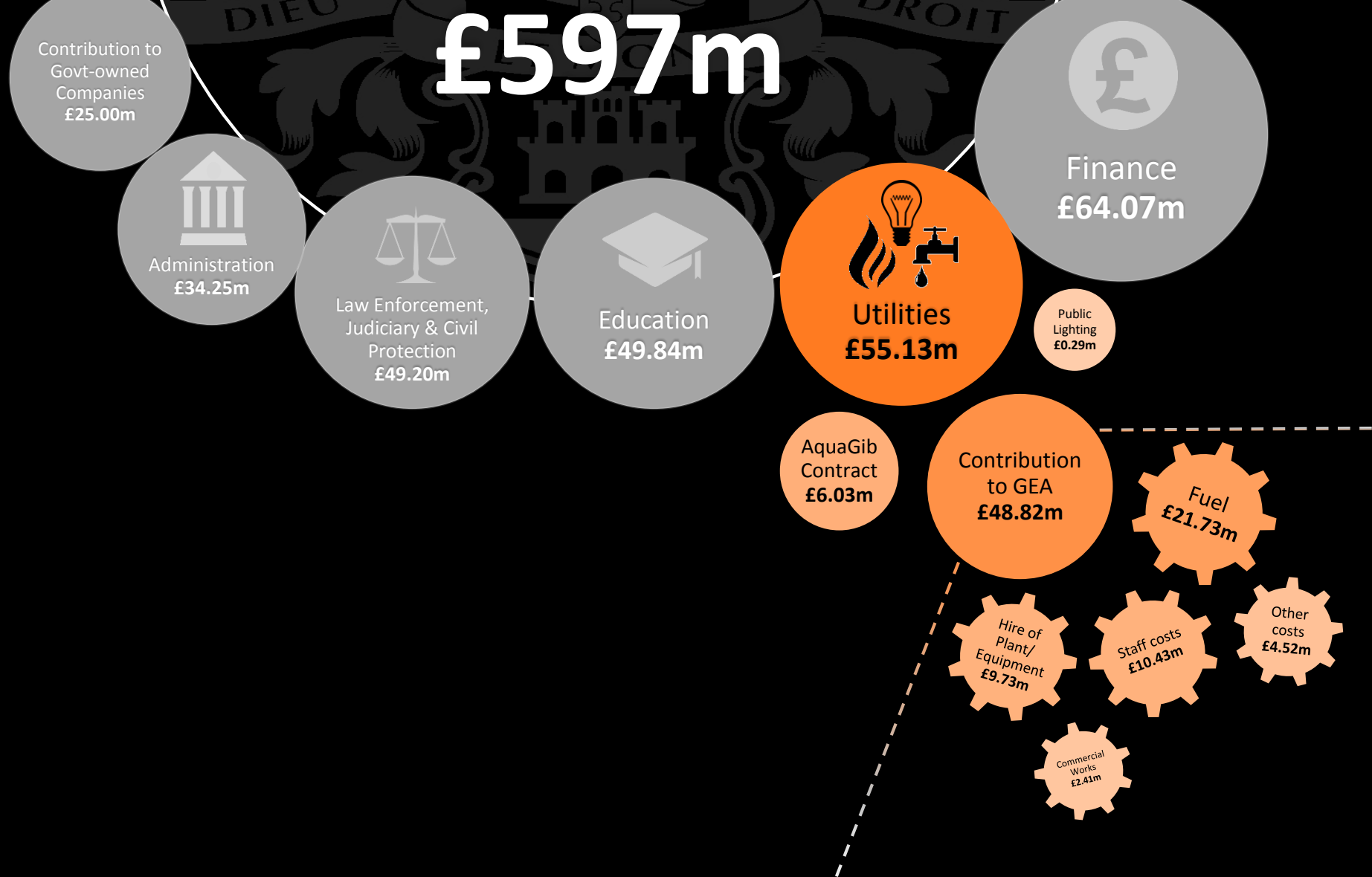


Total Estimated Expenditure £597m

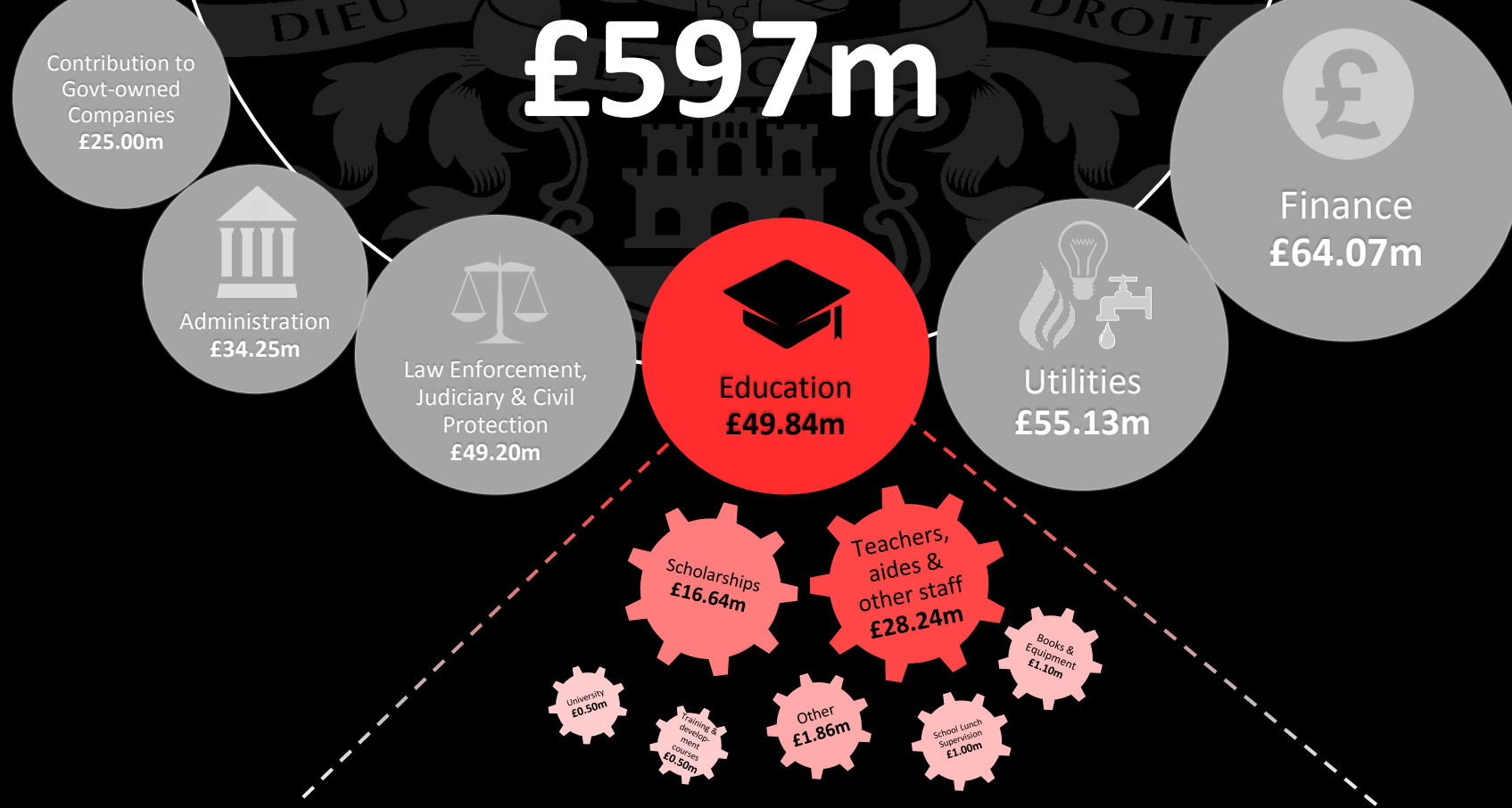




£597m



On Utilities



On Education



£597m

Contribution to
Govt-owned
Companies
£25.00m



Administration
£34.25m



Education
£49.84m



Utilities
£55.13m

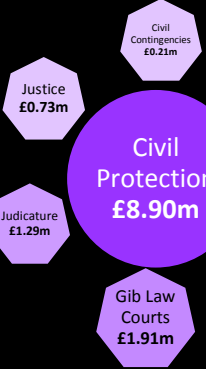


Finance
£64.07m

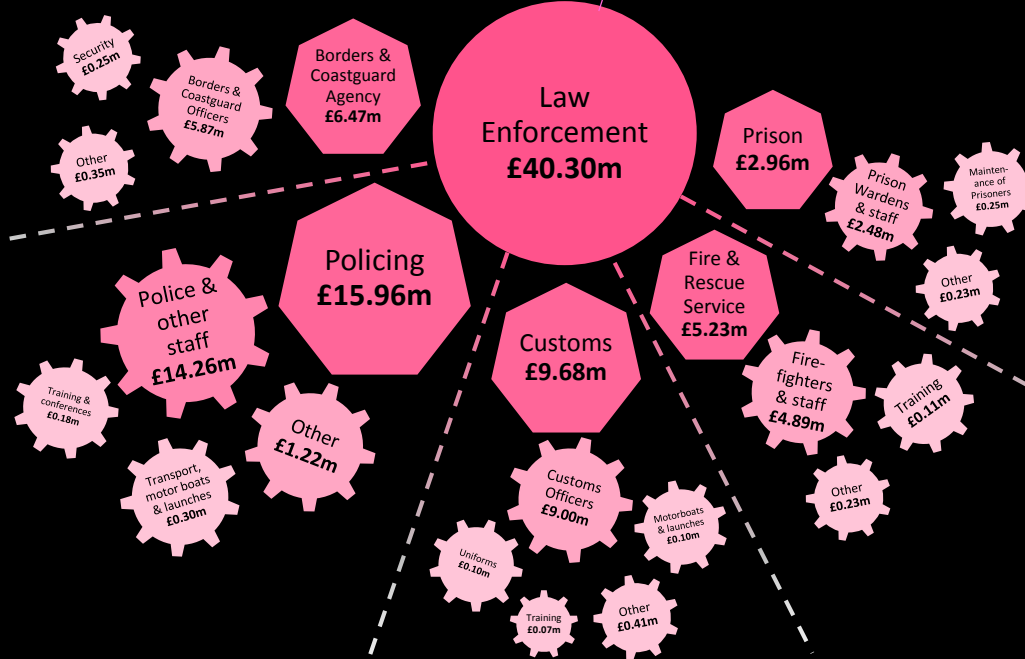


Law Enforcement,
Judiciary & Civil
Protection
£49.20m

Civil
Protection
£8.90m

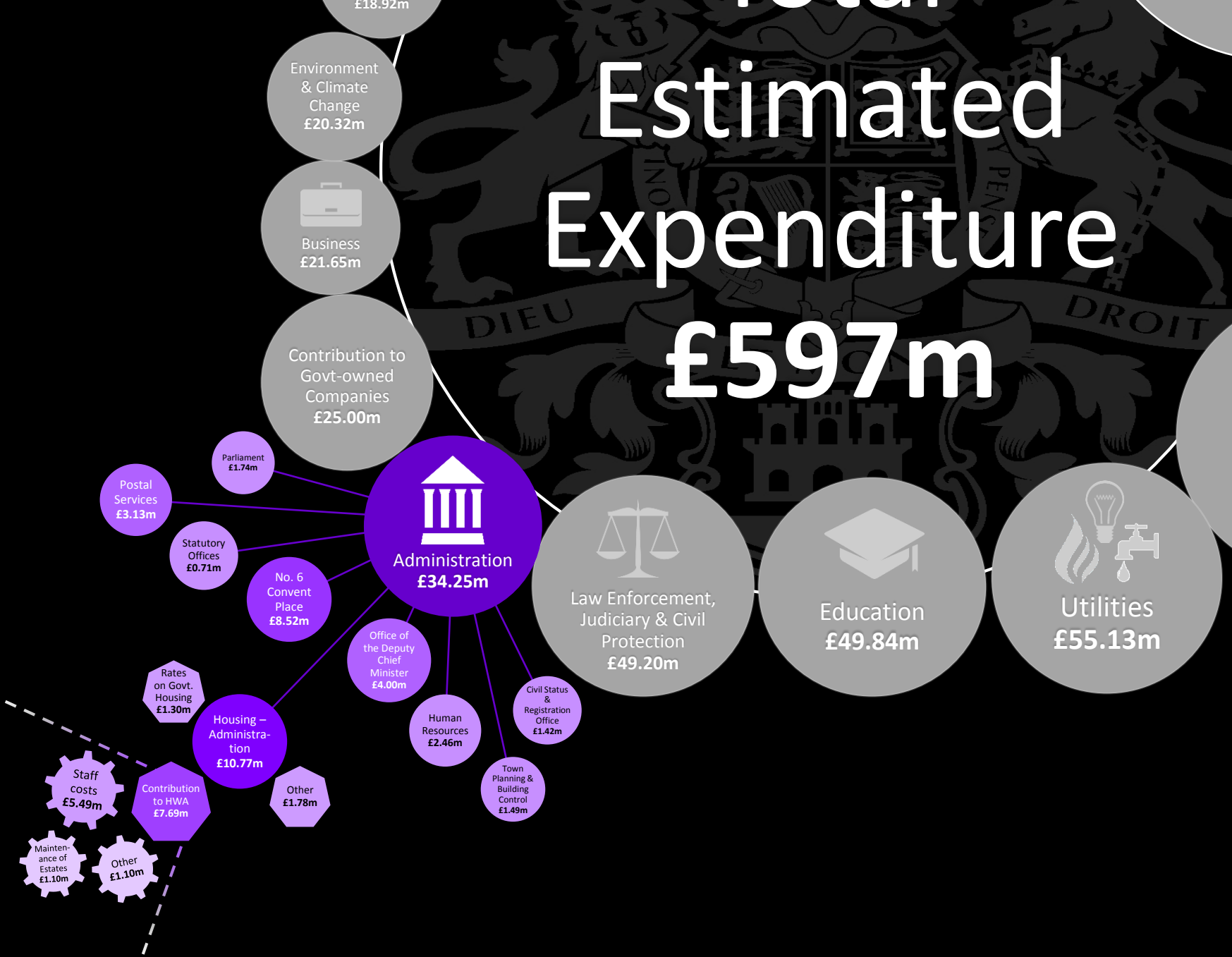


Law
Enforcement
£40.30m



*On Law Enforcement & Civil
Protection*

Estimated Expenditure £597m



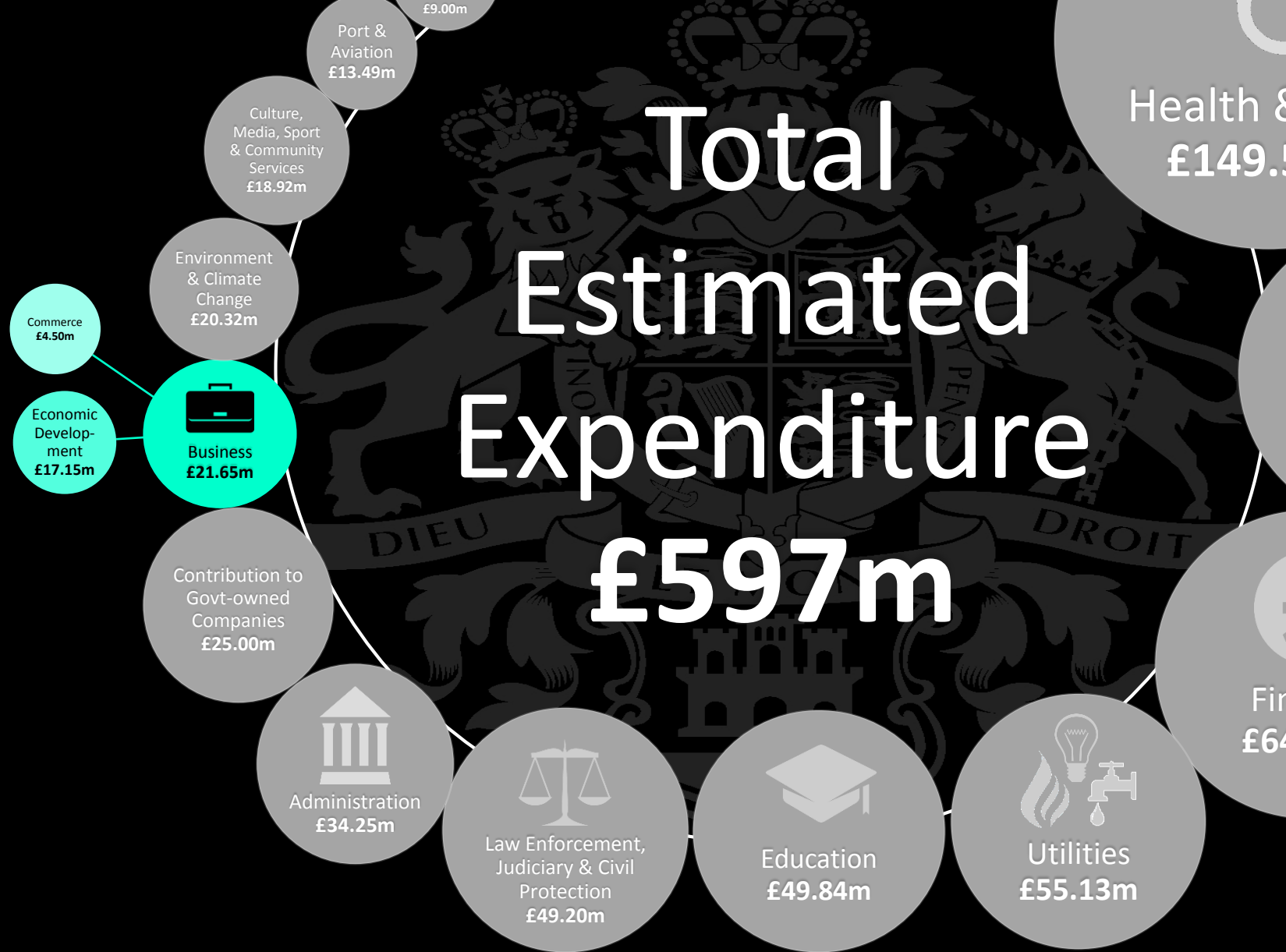
Total Estimated Expenditure £597m



On Contributions to Govt-owned Companies



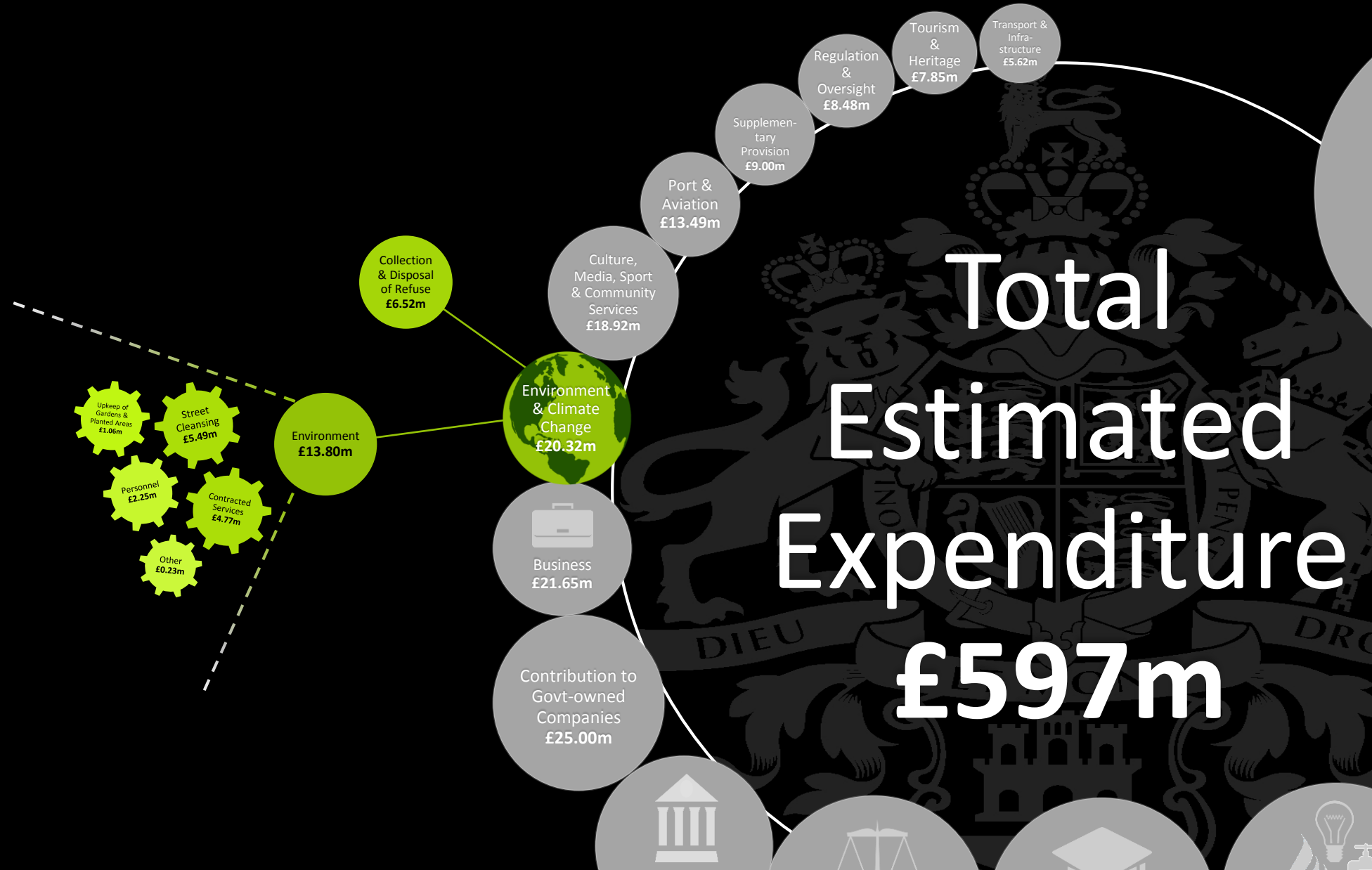
Total Estimated Expenditure £597m



ON BUSINESS



On Environment & Climate Change





On Culture, Media, Sport & Community Services

