

Air Traffic Survey 2017



Statistics Office
HM Government of Gibraltar



Statistics Office

HM Government of Gibraltar

AIR TRAFFIC SURVEY 2017



Statistics Office
HM Government of Gibraltar

Statistics Online

Copies of the Air Traffic Survey can be obtained, free of charge from the Statistics Office and are also available for download from the Gibraltar Government Website (<http://www.gibraltar.gov.gi/new/downloads>).

Historical data can be downloaded from previous copies of the report available on-line.

Comments and requests for general information should be addressed to:

Statistics Office
Suite 3.22 World Trade Center
6 Bayside Road
Or
E-mail: statistics@gibraltar.gov.gi
Tel: +350 20075515 / +350 20075490 / +350 20052541
Fax: +350 20051160

PREFACE

The Statistics (Air Traffic Survey) Order 1971 requires that the Government Statistician prepare a report and summary of the findings of the Air Traffic Survey to be laid before the Gibraltar Parliament.

This report contains statistical data on air traffic operations between Gibraltar and other destinations for both scheduled and charter airlines for the years 1993 to 2017. It also includes some general data on commercial freight and on the number of flights arriving in Gibraltar.

I must express my thanks to the Gibraltar Air Terminal Ltd and Borders and Coastguard Agency for their continued co-operation in the conduct of this Survey.

GOVERNMENT STATISTICIAN

DEFINITIONS AND NOTES

- (a) Passenger Load Factor: $\frac{\text{All seats used}}{\text{All seats offered (less in-transits)}} \times 100$
- (b) Revenue Load Factor: $\frac{\text{All seats used by "paying" passengers}}{\text{All seats offered (less in-transits)}} \times 100$
- (c) Scheduled Flights: are regular flights planned according to a published timetable, including those supplementary thereto, and available for use by members of the public.
- (d) Charter Flights: includes flights carrying 10 or more passengers, other than scheduled services and Ministry of Defence
- (e) In interpreting the figures it should be noted that:
- (i) Flights to and from Manchester re-commenced in September 2008.
 - (ii) Flights to and from Heathrow re-commenced in October 2009.
 - (iii) Flights to and from Madrid re-commenced in April 2009 and ended in March 2010.
 - (iv) Flights to and from Liverpool commenced in March 2011 and ended in October 2012.
 - (v) Flights to and from East Midlands commenced in March 2012 and ended in September 2012.
 - (vi) Flights to and from Birmingham commenced in March 2013 and ended in October 2017.
 - (vii) Flights to and from Marrakech commenced in April 2014 and ended in July 2014.
 - (viii) Flights to and from Tangier commenced in March 2015.
 - (ix) Flights to and from Bristol commenced in April 2015.
 - (x) Monarch Flights to and from Gatwick, Manchester, Luton and Birmingham ceased in October 2017.
 - (xi) Passenger load factors are calculated on the basis of actual figures and exclude passengers on connecting flights when applicable.
 - (xii) Revenue load factors are calculated in the same way as passenger load factors except they exclude non-paying passengers.
 - (xiii) Charter flights as from 1998 include all destinations.
No Charter operations were recorded during 1993 - 1997, 2008, 2011 - 2013.
 - (xiv) The yearly totals have been rounded off from the actual figure and need not necessarily equal the sum of the rounded off sub-totals.

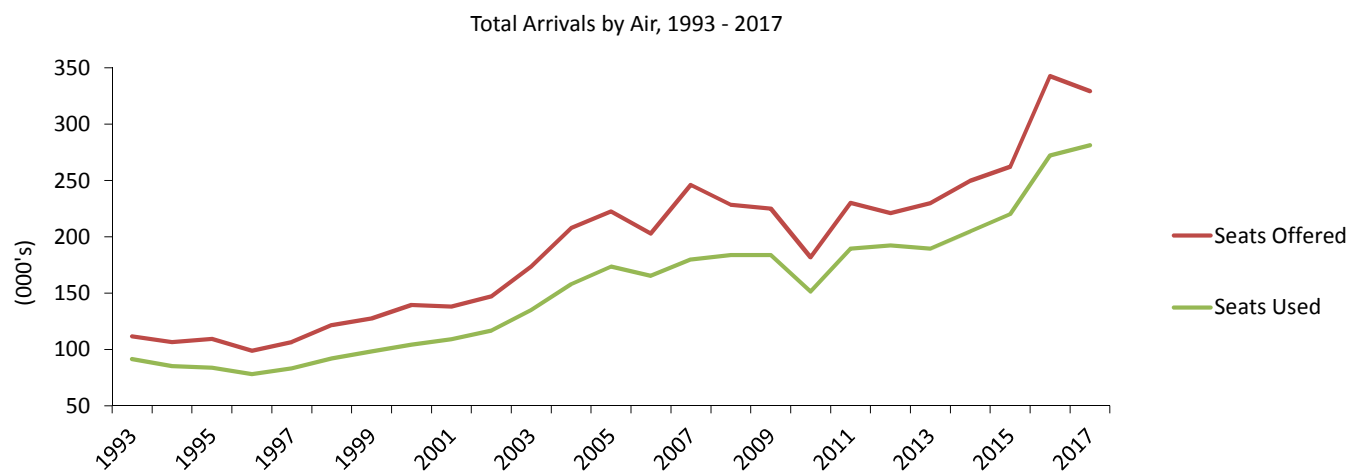
Contents

Tables		Page
1.	Arrivals and Departures by Air	
1.01	Arrivals/Departures by Air, 1993 - 2017	1
2.	Arrivals by Air (Scheduled Flights)	
2.01	Arrivals by Air from U.K., 1993 - 1996	2
2.02	Arrivals by Air from U.K., 1997 - 2000	2
2.03	Arrivals by Air from U.K., 2001 - 2004	3
2.04	Arrivals by Air from U.K., 2005 - 2008	3
2.05	Arrivals by Air from U.K., 2009 - 2011	4
2.06	Arrivals by Air from U.K., 2012 - 2014	4
2.07	Arrivals by Air from U.K., 2015 - 2017	5
2.08	Arrivals by Air from Spain, 2008 - 2010	6
2.09	Arrivals by Air from Tangier, 2015 - 2017	7
3.	Departures by Air (Scheduled Flights)	
3.01	Departures by Air to U.K., 1993 - 1995	8
3.02	Departures by Air to U.K., 1996 - 1998	8
3.03	Departures by Air to U.K., 1999 - 2001	9
3.04	Departures by Air to U.K., 2002 - 2004	9
3.05	Departures by Air to U.K., 2005 - 2007	10
3.06	Departures by Air to U.K., 2008 - 2010	10
3.07	Departures by Air to U.K., 2011 - 2012	11
3.08	Departures by Air to U.K., 2013 - 2014	11
3.09	Departures by Air to U.K., 2015 - 2017	12
3.10	Departures by Air to Spain, 2008 - 2010	13
3.11	Departures by Air to Tangier, 2015 - 2017	14
4.	Arrivals by Air (Charter Flights)	
4.01	Arrivals by Air, 2002 - 2004	15
4.02	Arrivals by Air, 2005 - 2007	15
4.03	Arrivals by Air, 2009 - 2010, 2014	16
4.04	Arrivals by Air, 2015 - 2017	16
5.	Departures by Air (Charter Flights)	
5.01	Departures by Air, 2002 - 2004	17
5.02	Departures by Air, 2005 - 2007	17
5.03	Departures by Air, 2009 - 2010, 2014	18
5.04	Departures by Air, 2015 - 2017	18
6.	Aircraft Arrivals	
6.01	Aircraft Arrivals, 2010 - 2017	19
7.	Commercial Freight	
7.01	Set Down and Picked Up by Air, Gibraltar, 1993 - 2017	20

1: Arrivals and Departures by Air

Table 1.01 Arrivals/Departures by Air, 1993 - 2017

Year	Arrivals (000's)						Departures (000's)					
	Total		Scheduled		Charter		Total		Scheduled		Charter	
	Seats Offered	Seats Used	Seats Offered	Seats Used	Seats Offered	Seats Used	Seats Offered	Seats Used	Seats Offered	Seats Used	Seats Offered	Seats Used
1993	111.5	91.3	111.4	91.2	0.1	0.1	112.2	93.3	112.2	93.3	-	-
1994	106.4	85.2	106.4	85.2	-	-	107.1	86.9	207.2	86.9	-	-
1995	109.4	83.8	109.4	83.8	-	-	109.5	85.3	109.5	85.3	-	-
1996	98.7	78.1	98.7	78.1	-	-	98.1	78.2	98.1	78.2	-	-
1997	106.6	83.2	106.6	83.2	-	-	104.4	81.5	104.4	81.5	-	-
1998	121.5	92.0	120.4	91.0	1.2	1.1	120.2	91.0	119.0	90.1	1.2	0.9
1999	127.5	98.3	126.5	97.8	1.0	0.5	127.5	97.9	126.5	97.4	1.0	0.5
2000	139.4	104.3	138.6	103.7	0.8	0.5	138.9	107.1	138.1	106.6	0.8	0.5
2001	138.0	109.0	137.7	108.8	0.3	0.2	138.2	110.6	137.9	110.5	0.4	0.2
2002	147.2	116.6	146.3	115.7	0.9	0.9	147.0	114.8	146.1	114.0	0.9	0.9
2003	173.5	135.0	170.3	133.0	3.3	2.0	173.1	134.8	169.8	132.9	3.3	1.9
2004	207.6	157.9	206.4	157.0	1.2	0.9	207.6	158.3	206.4	157.3	1.2	0.9
2005	222.4	173.5	221.6	172.7	0.8	0.8	222.2	174.4	221.4	173.7	0.8	0.7
2006	202.7	165.2	202.0	164.6	0.7	0.6	202.6	166.0	201.9	165.4	0.7	0.6
2007	245.9	179.7	244.1	179.3	1.8	0.5	246.2	181.6	244.3	180.6	1.8	1.0
2008	228.3	183.7	228.3	183.7	-	-	228.3	187.3	228.3	187.3	-	-
2009	225.0	183.9	224.8	183.7	0.2	0.2	224.9	186.2	224.7	186.0	0.2	0.2
2010	181.9	151.5	181.0	151.0	0.8	0.5	182.0	152.7	181.2	152.1	0.8	0.6
2011	230.1	189.5	230.1	189.5	-	-	230.1	193.5	230.1	193.5	-	-
2012	221.0	192.2	221.0	192.2	-	-	221.2	193.6	221.2	193.6	-	-
2013	229.9	189.4	229.9	189.4	-	-	227.6	193.4	227.6	193.4	-	-
2014	249.7	204.9	248.7	204.6	1.0	0.3	249.8	209.4	248.8	209.1	1.0	0.3
2015	262.1	220.2	261.8	220.0	0.3	0.2	262.4	221.7	262.2	221.5	0.3	0.2
2016	342.7	272.2	342.5	272.0	0.2	0.2	342.7	274.9	342.5	274.8	0.2	-
2017	329.2	281.1	329.1	281.0	0.2	0.2	329.2	286.0	329.0	285.8	0.2	0.2



2: Arrivals by Air (Scheduled Flights)

Table 2.01 Arrivals by Air from U.K. (Scheduled Flights), 1993 - 1996

	Seats used (000's)				Seats offered (000's)				Load factor (%)			
	1993	1994	1995	1996	1993	1994	1995	1996	1993	1994	1995	1996
January	5.7	5.1	4.1	4.6	7.4	7.1	7.8	7.7	77.9	71.3	53.0	53.9
February	5.5	5.0	5.6	5.5	6.1	5.9	6.6	7.7	90.7	83.5	84.2	68.9
March	7.1	6.9	7.3	7.0	7.5	7.4	7.8	8.4	95.9	93.8	93.8	83.7
April	8.2	6.7	7.7	6.3	10.2	9.4	10.1	8.5	79.9	71.0	76.0	74.3
May	8.6	8.3	8.1	7.7	11.1	9.9	10.3	9.0	76.7	83.2	78.1	86.4
June	8.6	8.3	7.6	7.5	11.1	10.6	9.8	8.7	77.7	79.0	77.0	85.6
July	10.1	9.6	8.8	7.6	10.9	10.8	10.3	8.4	92.3	89.0	85.8	90.7
August	8.8	8.4	7.8	6.6	11.0	11.2	10.1	7.5	79.9	75.4	77.7	87.8
September	8.7	8.3	7.2	7.2	10.7	10.2	9.3	8.4	81.5	80.8	77.7	86.4
October	7.9	7.5	7.3	6.6	11.2	9.8	10.0	8.5	70.5	76.3	73.7	78.3
November	6.1	5.3	5.8	5.8	7.3	6.9	8.4	7.8	84.0	76.3	69.5	74.5
December	5.8	5.9	6.5	5.7	6.9	7.2	8.9	8.1	84.8	82.4	73.8	70.7
Total	91.2	85.2	83.8	78.1	111.4	106.4	109.4	98.7	81.9	80.0	76.7	79.1

Table 2.02 Arrivals by Air from U.K. (Scheduled Flights), 1997 - 2000

	Seats used (000's)				Seats offered (000's)				Load factor (%)			
	1997	1998	1999	2000	1997	1998	1999	2000	1997	1998	1999	2000
January	4.6	4.8	5.2	4.6	7.9	9.4	8.4	11.1	57.8	51.1	62.5	41.5
February	5.2	6.0	6.3	6.2	6.3	9.0	7.4	9.8	83.0	66.4	84.5	63.6
March	6.1	7.6	8.1	8.7	6.9	9.8	8.8	10.7	87.4	78.1	91.4	81.3
April	5.4	7.8	7.8	9.1	6.6	10.0	9.8	10.4	82.3	77.9	80.4	87.2
May	8.6	9.0	10.0	10.1	9.9	11.4	12.5	13.4	86.4	79.0	80.3	75.9
June	7.6	8.0	9.8	9.7	9.4	10.9	11.8	12.4	80.2	73.6	82.7	78.3
July	8.6	9.3	10.7	10.8	9.5	10.6	12.4	13.4	90.8	87.3	85.8	80.8
August	8.3	9.2	9.2	10.1	10.0	11.2	11.6	12.9	83.4	82.2	79.2	78.1
September	8.1	8.4	8.9	10.5	10.7	10.7	11.8	12.7	75.6	78.0	75.6	82.5
October	8.5	8.2	8.3	10.0	10.4	11.2	11.7	13.4	81.1	73.1	70.3	74.6
November	5.9	6.5	6.5	7.0	9.2	8.4	9.7	9.1	63.7	78.0	67.0	76.2
December	6.4	6.3	7.1	7.0	9.8	7.9	10.6	9.3	65.8	79.7	66.9	75.0
Total	83.2	91.0	97.8	103.7	106.6	120.4	126.5	138.6	78.0	75.6	77.3	74.9

2: Arrivals by Air (Scheduled Flights)

Table 2.03 Arrivals by Air from U.K. (Scheduled Flights), 2001 - 2004

	Seats used (000's)				Seats offered (000's)				Load factor (%)			
	2001	2002	2003	2004	2001	2002	2003	2004	2001	2002	2003	2004
January	5.4	5.5	6.5	7.5	9.4	9.3	11.4	12.4	57.3	59.6	57.4	60.0
February	6.9	7.6	7.9	9.2	8.3	8.9	9.3	11.9	82.7	85.9	84.8	77.8
March	8.6	10.2	10.3	12.4	9.8	11.7	13.2	15.4	87.9	87.4	78.2	80.7
April	9.0	8.0	11.0	12.9	10.6	10.7	13.2	16.7	84.5	75.2	82.9	77.0
May	11.1	10.4	13.0	14.0	13.2	14.1	16.1	20.2	83.6	73.8	80.9	69.3
June	11.0	10.4	12.2	14.3	12.8	13.3	15.6	19.5	85.7	78.3	78.6	73.4
July	11.7	13.2	14.6	17.5	13.5	14.6	16.1	20.1	86.6	90.4	90.6	87.2
August	10.5	12.2	13.2	16.2	13.4	14.3	16.1	20.2	78.3	85.5	81.8	80.4
September	10.2	11.4	12.0	15.5	12.8	13.6	15.5	19.6	79.5	83.6	77.2	79.0
October	9.5	11.0	12.3	14.3	13.4	14.4	15.9	20.3	70.9	76.4	77.5	70.6
November	7.5	8.0	10.2	11.7	10.6	10.7	14.1	15.2	71.1	74.7	71.9	76.8
December	7.5	7.6	9.8	11.6	9.7	10.7	13.8	15.0	76.5	71.4	71.3	77.0
Total	108.8	115.7	133.0	157.0	137.7	146.3	170.3	206.4	79.0	79.1	78.1	76.1

Table 2.04 Arrivals by Air from U.K. (Scheduled Flights), 2005 - 2008

	Seats used (000's)				Seats offered (000's)				Load factor (%)			
	2005	2006	2007	2008	2005	2006	2007	2008	2005	2006	2007	2008
January	10.0	9.7	7.8	9.0	15.9	15.5	11.4	13.0	62.7	62.7	68.7	69.4
February	10.5	10.7	7.8	8.6	14.4	14.8	10.8	10.4	73.2	72.5	72.3	83.2
March	13.4	14.6	9.6	11.3	16.6	17.6	12.7	12.3	80.7	83.3	75.4	91.2
April	13.9	15.2	11.1	15.1	17.6	17.8	14.0	18.3	78.9	85.2	79.6	82.8
May	16.0	17.1	13.7	16.8	21.1	19.3	16.8	19.4	75.8	88.6	81.1	86.8
June	16.2	16.8	13.4	15.8	20.4	19.8	16.4	18.9	79.7	84.9	81.7	83.4
July	18.4	17.9	15.5	19.4	21.1	19.6	16.9	21.4	87.4	91.2	91.7	90.6
August	18.2	14.4	13.4	18.1	21.2	17.4	16.4	21.3	85.8	82.9	81.7	85.2
September	17.0	13.9	14.1	17.7	20.5	17.6	16.4	22.2	83.3	79.0	85.9	79.7
October	16.4	13.8	14.1	18.1	20.9	17.4	17.0	22.2	78.4	79.5	82.5	81.1
November	11.5	9.8	11.2	13.9	16.7	11.7	13.2	19.4	69.0	83.7	84.7	71.7
December	11.1	10.7	10.5	15.2	15.3	13.6	12.7	18.7	72.7	78.8	82.6	81.2
Total	172.7	164.6	142.1	179.0	221.6	202.0	174.8	217.5	77.9	81.5	81.3	82.3

2: Arrivals by Air (Scheduled Flights)

Table 2.05 Arrivals by Air from U.K. (Scheduled Flights), 2009 - 2011

	Seats used (000's)			Seats offered (000's)			Load factor (%)		
	2009	2010	2011	2009	2010	2011	2009	2010	2011
January	10.9	9.0	9.1	15.6	13.0	14.0	69.8	69.1	65.4
February	12.2	9.5	10.1	15.5	11.6	13.4	79.1	81.5	75.0
March	16.1	12.1	12.8	18.7	14.0	16.1	86.5	86.3	79.8
April	16.3	9.7	15.3	19.3	11.5	18.5	84.7	84.4	83.0
May	17.0	13.4	17.1	18.8	15.7	21.3	90.3	85.0	80.5
June	17.0	14.2	18.2	18.5	15.7	22.3	92.0	90.6	81.8
July	17.7	15.1	21.5	19.1	16.2	23.9	92.9	93.3	89.9
August	16.3	14.9	21.5	18.8	16.2	24.1	86.8	91.6	89.2
September	15.9	14.4	18.8	18.4	16.4	22.4	86.3	87.6	84.0
October	15.6	15.1	17.1	18.4	18.2	20.8	84.7	83.0	82.4
November	11.1	11.9	13.8	14.1	15.6	16.8	79.1	76.2	82.2
December	10.6	10.9	14.1	13.1	13.7	16.7	80.8	79.2	84.5
Total	176.8	150.1	189.5	208.1	178.0	230.1	84.9	84.3	82.4

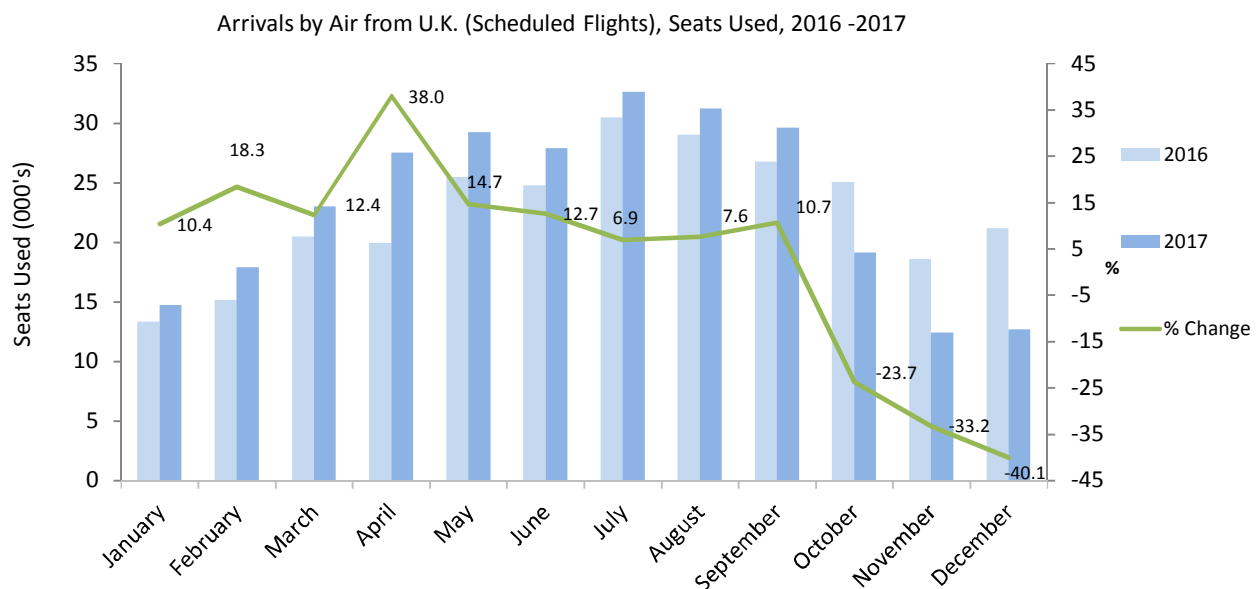
Table 2.06 Arrivals by Air from U.K. (Scheduled Flights), 2012 - 2014

	Seats used (000's)			Seats offered (000's)			Load factor (%)		
	2012	2013	2014	2012	2013	2014	2012	2013	2014
January	11.4	8.9	12.2	15.8	13.5	18.3	72.3	66.1	66.4
February	12.9	12.0	13.4	15.0	13.8	17.6	86.4	86.6	76.4
March	15.9	14.8	16.6	17.0	16.3	19.7	93.4	90.6	84.1
April	16.2	13.6	16.5	20.2	17.4	19.5	80.1	78.1	84.8
May	16.9	16.6	17.3	19.1	19.5	20.4	88.8	85.0	84.9
June	18.3	18.0	17.8	20.1	20.7	21.2	90.9	87.1	84.0
July	20.8	21.1	21.3	21.9	23.0	23.8	95.3	91.6	89.6
August	19.8	19.7	20.9	21.7	22.7	24.4	91.1	86.7	85.7
September	17.4	18.6	19.3	19.7	22.8	23.3	88.4	81.7	83.0
October	17.1	17.5	19.2	19.7	22.3	22.2	87.0	78.4	86.6
November	12.1	14.0	14.4	15.0	19.0	19.5	80.6	73.9	73.9
December	13.4	14.6	15.6	16.0	18.9	18.9	83.7	77.4	82.7
Total	192.2	189.4	204.6	221.0	229.9	248.7	86.9	82.4	82.3

2: Arrivals by Air (Scheduled Flights)

Table 2.07 Arrivals by Air from U.K. (Scheduled Flights), 2015 - 2017

	Seats used (000's)			Seats offered (000's)			Load factor (%)		
	2015	2016	2017	2015	2016	2017	2015	2016	2017
January	11.4	13.3	14.7	16.3	19.4	22.2	70.1	68.6	66.0
February	12.5	15.1	17.9	15.4	18.9	22.0	80.7	80.0	81.6
March	16.3	20.5	23.0	17.7	23.5	27.1	92.0	87.1	84.9
April	16.4	19.9	27.5	19.4	25.8	32.7	84.3	77.2	84.0
May	20.1	25.5	29.2	22.9	31.6	32.6	87.9	80.7	89.8
June	20.9	24.8	27.9	23.7	30.7	32.1	88.1	80.7	86.9
July	24.2	30.5	32.6	25.2	34.6	35.3	96.1	88.0	92.4
August	22.8	29.0	31.2	25.7	35.3	35.3	88.8	82.1	88.6
September	21.3	26.7	29.6	24.6	33.0	34.3	86.4	81.0	86.2
October	20.7	25.0	19.1	24.9	32.6	21.1	83.0	76.8	90.4
November	15.6	18.6	12.4	20.5	24.7	13.6	75.9	75.3	90.9
December	16.7	21.2	12.7	19.9	25.3	13.5	83.9	83.7	93.6
Total	218.7	270.1	277.8	256.2	335.4	321.9	85.4	80.5	86.3



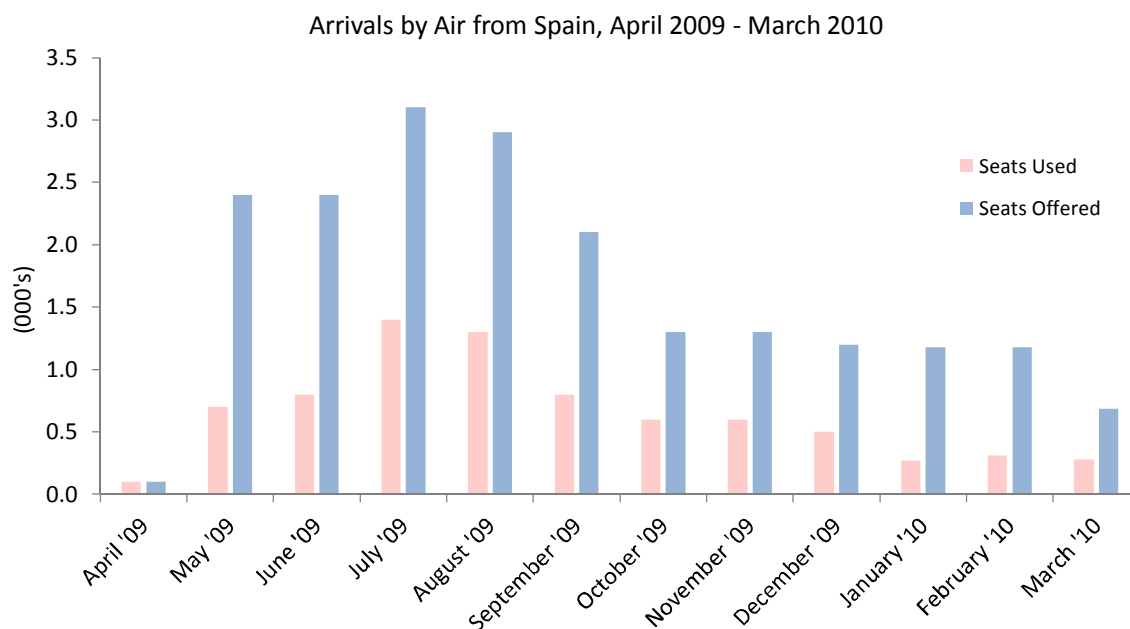
Note:

(i) The total yearly figures have been rounded off from the actual figures and need not necessarily equal the sum of the rounded off monthly figures.

2: Arrivals by Air (Scheduled Flights)

Table 2.08 Arrivals by Air from Spain (Scheduled Flights), 2008 - 2010

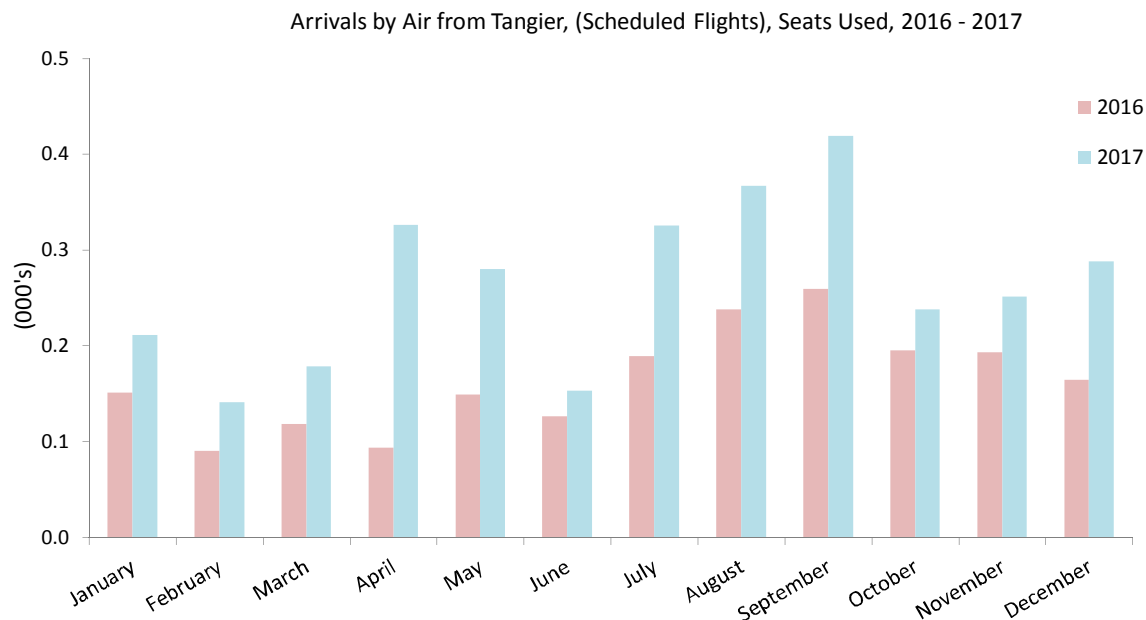
	Seats used (000's)			Seats offered (000's)			Load factor (%)		
	2008	2009	2010	2008	2009	2010	2008	2009	2010
January	0.3	-	0.3	1.1	-	1.2	29.6	-	23.0
February	0.5	-	0.3	1.3	-	1.2	36.0	-	26.4
March	0.5	-	0.3	1.3	-	0.7	42.3	-	40.5
April	0.3	0.1	-	1.1	0.1	-	26.6	51.0	-
May	0.4	0.7	-	1.3	2.4	-	32.5	31.8	-
June	0.5	0.8	-	1.0	2.4	-	53.5	35.1	-
July	0.7	1.4	-	1.1	3.1	-	63.4	45.9	-
August	0.8	1.3	-	1.4	2.9	-	57.0	44.8	-
September	0.6	0.8	-	1.1	2.1	-	49.7	38.8	-
October	-	0.6	-	-	1.3	-	-	47.8	-
November	-	0.6	-	-	1.3	-	-	49.6	-
December	-	0.5	-	-	1.2	-	-	42.9	-
Total	4.7	6.9	0.9	10.7	16.6	3.0	43.3	41.5	28.3



2: Arrivals by Air (Scheduled Flights)

Table 2.09 Arrivals by Air from Tangier (Scheduled Flights), 2015 - 2017

	Seats used (000's)			Seats offered (000's)			Load factor (%)		
	2015	2016	2017	2015	2016	2017	2015	2016	2017
January	-	0.2	0.2	-	0.6	0.6	-	27.0	33.5
February	-	0.1	0.1	-	0.6	0.5	-	16.1	28.8
March	-	0.1	0.2	0.1	0.6	0.6	2.9	18.7	28.3
April	0.2	0.1	0.3	0.6	0.6	0.6	26.7	16.6	51.7
May	0.1	0.1	0.3	0.6	0.6	0.6	15.2	23.7	50.0
June	0.1	0.1	0.2	0.6	0.6	0.6	19.3	20.0	24.3
July	0.1	0.2	0.3	0.6	0.6	0.6	17.3	30.0	51.6
August	0.3	0.2	0.4	0.6	0.6	0.6	43.7	42.5	58.3
September	0.1	0.3	0.4	0.6	0.6	0.6	23.0	41.1	74.8
October	0.2	0.2	0.2	0.6	0.6	0.6	24.1	31.0	42.5
November	0.2	0.2	0.3	0.6	0.6	0.6	28.9	34.5	39.8
December	0.1	0.2	0.3	0.6	0.6	0.6	12.1	29.3	45.7
Total	1.3	2.0	3.2	5.6	7.1	7.2	23.2	27.5	44.1



3: Departures by Air (Scheduled Flights)

Table 3.01 Departures by Air to U.K. (Scheduled Flights), 1993 - 1995

	Seats used (000's)			Seats offered (000's)			Load factor (%)					
	1993	1994	1995	1993	1994	1995	1993		1994		1995	
							(i)	(ii)	(i)	(ii)	(i)	(ii)
January	6.1	5.8	5.5	7.6	7.1	7.8	80.5 (79.3)	81.9 (80.8)	70.8 (70.3)			
February	5.4	5.0	5.2	6.4	6.2	6.9	83.8 (82.9)	81.7 (80.1)	75.1 (74.4)			
March	6.7	5.5	6.6	7.8	7.5	7.7	86.1 (84.7)	74.1 (72.9)	85.1 (84.6)			
April	8.3	7.6	8.3	10.0	9.3	10.3	82.3 (81.0)	81.9 (81.2)	80.5 (80.3)			
May	7.9	7.6	7.3	11.1	10.1	10.4	71.3 (69.8)	76.3 (75.2)	69.8 (69.4)			
June	9.4	8.7	8.2	11.1	10.4	9.9	84.1 (82.9)	84.8 (83.7)	82.5 (82.0)			
July	8.7	8.4	7.9	11.3	10.9	10.3	77.5 (76.7)	77.0 (77.5)	76.5 (76.0)			
August	10.0	9.7	8.5	10.9	10.9	10.3	91.4 (90.5)	89.0 (88.3)	82.8 (82.4)			
September	9.7	9.3	8.4	10.5	10.2	9.6	92.2 (91.0)	91.8 (91.2)	87.6 (87.0)			
October	9.5	8.9	8.3	11.1	10.2	9.9	86.0 (85.0)	88.3 (87.5)	83.0 (82.4)			
November	6.5	5.6	6.3	7.3	6.8	8.5	88.8 (87.3)	83.3 (82.4)	73.8 (73.1)			
December	5.1	4.8	4.8	6.9	7.2	7.9	73.2 (72.4)	67.3 (66.9)	61.5 (60.8)			
Total	93.3	86.9	85.3	112.2	107.1	109.5	83.2 (82.0)	81.2 (80.3)	77.8 (77.3)			

Table 3.02 Departures by Air to U.K. (Scheduled Flights), 1996 - 1998

	Seats used (000's)			Seats offered (000's)			Load factor (%)					
	1996	1997	1998	1996	1997	1998	1996		1997		1998	
							(i)	(ii)	(i)	(ii)	(i)	(ii)
January	5.3	4.7	6.0	7.7	6.8	9.5	69.4 (69.0)	68.5 (67.4)	63.1 (62.7)			
February	5.6	5.1	5.3	8.2	6.4	8.7	68.1 (67.6)	79.4 (78.3)	60.7 (60.2)			
March	6.3	5.2	6.7	8.1	6.8	9.9	77.1 (76.4)	76.4 (75.5)	67.9 (67.9)			
April	7.0	6.1	8.2	8.7	6.7	10.0	81.0 (80.7)	90.1 (89.7)	81.9 (81.7)			
May	7.0	7.7	8.0	8.7	9.6	11.2	79.9 (79.5)	79.8 (79.2)	71.3 (70.9)			
June	8.1	7.9	8.1	9.1	9.5	10.8	89.5 (89.1)	83.2 (83.0)	74.6 (74.2)			
July	6.8	7.5	7.7	8.6	9.7	10.3	79.1 (79.0)	77.0 (76.7)	74.5 (74.3)			
August	6.8	8.7	9.9	7.6	9.5	11.1	89.7 (89.5)	91.7 (91.4)	89.5 (89.4)			
September	8.0	8.8	9.2	8.5	10.5	10.4	93.5 (93.2)	83.8 (83.5)	88.5 (88.4)			
October	7.3	8.6	8.9	8.3	9.6	11.0	88.6 (88.2)	90.0 (89.6)	80.5 (80.3)			
November	5.9	6.5	7.1	7.6	9.2	8.3	77.7 (77.1)	70.3 (70.0)	84.9 (84.4)			
December	4.1	4.7	5.0	7.0	10.1	7.6	58.8 (58.4)	46.3 (46.1)	66.2 (65.5)			
Total	78.2	81.5	90.1	98.1	104.4	119.0	79.6 (79.0)	78.1 (77.6)	75.7 (75.4)			

Notes:

(i) Passenger load factor.

(ii) Revenue load factor.

3: Departures by Air (Scheduled Flights)

Table 3.03 Departures by Air to U.K. (Scheduled Flights), 1999 - 2001

	Seats used (000's)			Seats offered (000's)			Load factor (%)					
	1999	2000	2001	1999	2000	2001	1999		2000		2001	
							(i)	(ii)	(i)	(ii)	(i)	(ii)
January	6.3	6.5	6.6	8.5	11.1	9.4	74.1	(73.9)	58.8	(58.7)	70.2	(70.2)
February	5.7	6.0	6.6	7.5	9.8	8.4	75.1	(74.3)	61.5	(61.4)	78.9	(78.9)
March	7.0	8.0	7.9	8.5	10.6	9.8	82.8	(82.7)	75.2	(74.9)	81.0	(81.0)
April	8.7	9.1	9.4	9.8	10.1	10.6	89.0	(88.5)	89.4	(89.3)	87.9	(87.9)
May	8.9	9.9	10.2	12.5	13.3	13.3	71.0	(71.0)	74.5	(74.5)	76.7	(76.7)
June	10.0	10.5	11.0	11.6	12.4	12.9	86.3	(86.3)	84.9	(84.8)	85.7	(85.7)
July	9.4	9.8	10.3	12.5	13.4	13.5	75.7	(75.7)	73.0	(72.9)	76.0	(76.0)
August	9.6	10.6	11.5	11.4	12.7	13.4	84.7	(84.7)	83.6	(83.5)	85.4	(85.4)
September	10.2	11.7	11.1	11.8	12.8	12.8	86.3	(86.3)	91.4	(91.2)	86.6	(86.6)
October	9.0	11.1	11.3	11.8	13.2	13.5	76.4	(76.4)	84.2	(84.1)	83.9	(83.9)
November	7.4	7.5	8.5	10.0	9.2	10.7	74.4	(74.4)	82.1	(82.0)	79.9	(79.9)
December	5.1	5.7	6.0	10.6	9.3	9.5	48.0	(47.9)	61.3	(60.8)	63.2	(63.2)
Total	97.4	106.6	110.5	126.5	138.1	137.9	77.0	(76.9)	77.2	(77.1)	80.1	(80.1)

Table 3.04 Departures by Air to U.K. (Scheduled Flights), 2002 - 2004

	Seats used (000's)			Seats offered (000's)			Load factor (%)					
	2002	2003	2004	2002	2003	2004	2002		2003		2004	
							(i)	(ii)	(i)	(ii)	(i)	(ii)
January	6.4	7.5	8.7	9.5	11.4	12.4	67.7	(67.7)	66.2	(66.2)	70.0	(69.9)
February	7.0	7.3	9.1	8.9	9.3	11.9	78.4	(78.4)	77.8	(77.8)	76.2	(76.2)
March	8.4	10.1	11.6	11.1	13.2	15.4	75.7	(75.7)	76.6	(76.6)	75.3	(75.3)
April	9.3	10.5	13.0	10.7	12.9	16.7	86.5	(86.5)	81.1	(81.1)	77.7	(77.7)
May	9.4	12.0	12.3	14.1	16.1	20.2	66.5	(66.5)	74.7	(74.6)	61.0	(61.0)
June	10.5	12.8	15.1	13.3	15.4	19.5	79.1	(79.1)	83.3	(83.3)	77.6	(77.6)
July	10.8	12.0	14.9	14.8	16.1	20.0	72.9	(72.9)	74.7	(74.6)	74.2	(74.2)
August	13.1	14.6	17.9	14.5	16.1	20.2	90.5	(90.5)	91.0	(91.0)	88.5	(88.5)
September	12.6	13.7	17.1	13.6	15.5	19.6	92.7	(92.7)	88.1	(88.1)	87.2	(87.2)
October	11.7	12.9	15.4	14.4	15.9	20.3	81.3	(81.3)	81.0	(80.9)	75.8	(75.8)
November	8.6	10.9	12.6	10.7	14.1	15.2	80.6	(80.6)	77.4	(77.4)	83.1	(83.1)
December	6.2	8.5	9.8	10.5	13.8	15.0	58.8	(58.8)	61.6	(61.6)	64.9	(64.9)
Total	114.0	132.9	157.3	146.1	169.8	206.4	78.0	(78.0)	78.2	(78.2)	76.2	(76.2)

Notes:

(i) Passenger load factor.

(ii) Revenue load factor.

3: Departures by Air (Scheduled Flights)

Table 3.05 Departures by Air to U.K. (Scheduled Flights), 2005 - 2007

	Seats used (000's)			Seats offered (000's)			Load factor (%)					
	2005	2006	2007	2005	2006	2007	2005		2006		2007	
							(i)	(ii)	(i)	(ii)	(i)	(ii)
January	11.9	10.5	8.6	15.8	15.7	11.4	75.4 (75.4)	66.6 (66.6)	75.6 (75.6)			
February	10.2	10.6	7.9	14.4	14.8	10.8	70.8 (70.8)	72.1 (72.1)	73.0 (73.0)			
March	11.8	13.2	8.9	16.6	17.6	12.7	71.1 (71.1)	75.5 (75.5)	69.8 (69.8)			
April	14.4	15.5	10.9	17.6	17.8	13.9	81.9 (81.9)	87.0 (87.0)	78.2 (78.2)			
May	14.4	15.8	12.7	21.1	19.3	17.0	68.8 (68.8)	82.1 (82.1)	74.8 (74.8)			
June	17.2	17.7	14.0	20.5	19.8	16.2	83.7 (83.7)	89.3 (89.3)	86.1 (86.1)			
July	16.3	16.3	14.1	21.1	19.6	16.9	77.5 (77.5)	83.1 (83.1)	83.7 (83.7)			
August	18.8	15.9	14.0	21.2	17.6	16.2	88.7 (88.7)	90.4 (90.4)	86.1 (86.1)			
September	19.0	15.4	15.3	20.4	17.2	16.4	92.8 (92.8)	89.5 (89.5)	93.4 (93.4)			
October	17.5	14.5	14.9	20.9	17.4	17.2	83.8 (83.8)	83.7 (83.7)	86.7 (86.7)			
November	12.6	10.5	12.0	16.6	11.6	13.2	75.8 (75.8)	90.0 (90.0)	91.1 (91.1)			
December	9.6	9.5	9.4	15.1	13.6	12.7	63.3 (63.3)	70.0 (70.0)	73.6 (73.6)			
Total	173.7	165.4	142.7	221.4	201.9	174.7	78.5 (78.5)	81.9 (81.9)	81.7 (81.7)			

Table 3.06 Departures by Air to U.K. (Scheduled Flights), 2008 - 2010

	Seats used (000's)			Seats offered (000's)			Load factor (%)		
	2008	2009	2010	2008	2009	2010	2008	2009	2010
							(i)	(i)	(i)
January	9.7	12.5	9.4	13.0	15.6	13.0	74.5	80.0	71.8
February	8.5	12.2	9.1	10.4	15.4	11.6	81.7	79.1	78.9
March	10.3	15.0	10.9	12.3	18.7	14.0	83.4	80.3	77.5
April	15.8	16.6	9.1	18.3	19.3	11.5	86.3	85.9	77.7
May	16.2	16.5	13.0	19.4	18.8	15.7	83.3	87.7	82.9
June	16.4	17.0	14.2	18.8	18.5	15.7	87.2	91.9	90.6
July	18.0	16.6	14.4	21.5	19.0	16.2	83.7	87.5	89.4
August	19.6	17.4	15.5	21.3	18.8	16.2	91.8	92.7	95.3
September	20.0	17.3	15.6	22.3	18.4	16.4	89.8	93.9	94.7
October	18.9	16.4	16.5	22.3	18.4	18.2	84.5	89.1	90.8
November	15.8	12.0	13.2	19.4	14.1	15.6	81.2	85.2	84.1
December	13.5	9.7	10.3	18.5	13.1	13.7	72.9	74.1	74.9
Total	182.5	179.1	151.1	217.6	208.1	178.0	83.9	86.1	84.8

Notes:

*(i) Passenger load factor.**(ii) Revenue load factor.*

3: Departures by Air (Scheduled Flights)

Table 3.07 Departures by Air to U.K. (Scheduled Flights), 2011 - 2012

	Seats used (000's)		Seats offered (000's)		Load factor (%)	
	2011	2012	2011	2012	2011	2012
January	10.3	12.4	14.0	15.8	73.4	78.3
February	10.1	12.9	13.4	15.0	75.3	86.3
March	12.5	14.7	16.1	17.1	77.9	86.1
April	14.8	16.9	18.5	20.2	80.3	83.8
May	16.4	15.8	21.3	19.0	77.2	83.2
June	18.9	18.0	22.3	20.1	84.7	89.6
July	19.6	19.3	23.9	21.9	81.9	88.4
August	22.1	20.5	24.1	21.8	92.3	94.3
September	21.4	19.0	22.4	19.7	95.5	96.9
October	18.8	18.4	20.8	19.7	90.3	93.4
November	15.5	13.6	16.8	15.0	91.8	90.4
December	13.1	11.9	16.7	16.0	78.5	74.5
Total	193.5	193.6	230.1	221.2	84.1	87.5

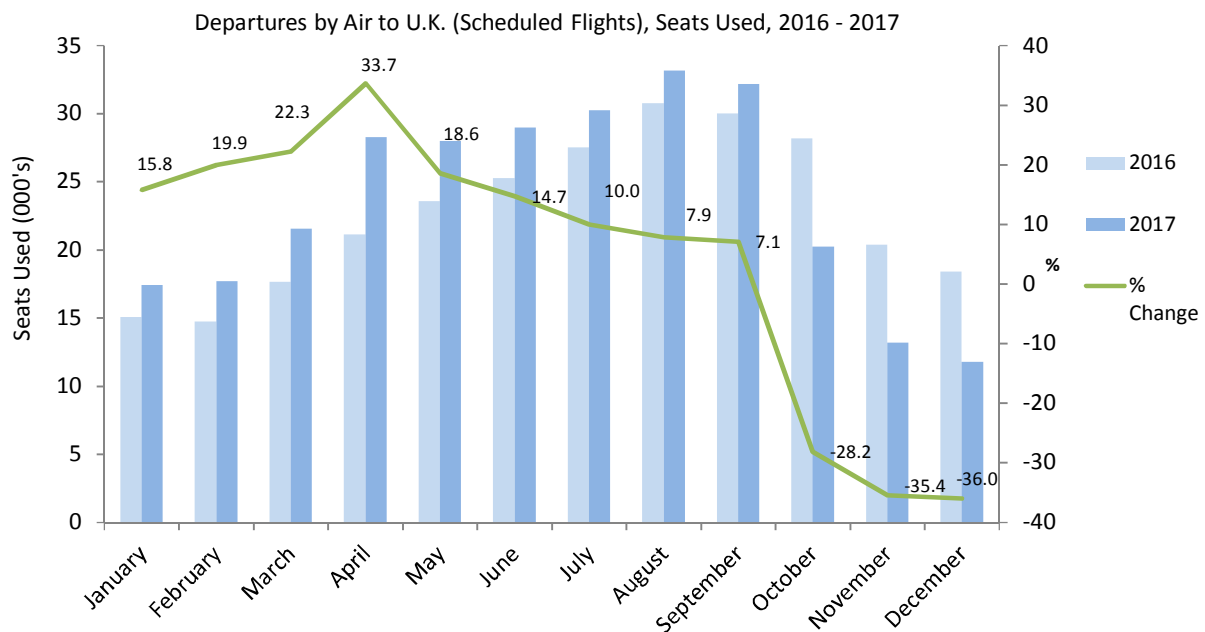
Table 3.08 Departures by Air to U.K. (Scheduled Flights), 2013 - 2014

	Seats used (000's)		Seats offered (000's)		Load factor (%)	
	2013	2014	2013	2014	2013	2014
January	10.1	13.4	13.5	18.3	74.9	73.0
February	11.8	13.4	13.8	17.6	84.9	76.0
March	13.3	16.0	16.3	19.7	81.7	81.2
April	14.7	16.8	17.4	19.5	84.0	86.4
May	15.5	16.6	19.5	20.4	79.6	81.4
June	18.2	18.0	20.7	21.2	87.7	84.9
July	19.5	19.9	22.8	23.8	85.3	83.7
August	21.4	22.4	22.8	24.4	93.9	91.5
September	21.1	21.5	22.8	23.2	92.4	92.7
October	18.2	20.6	22.3	22.2	81.5	92.8
November	15.6	16.6	19.0	19.5	82.2	84.7
December	14.0	14.0	16.5	18.9	85.0	73.9
Total	193.4	209.1	227.6	248.8	85.0	84.1

3: Departures by Air (Scheduled Flights)

Table 3.09 Departures by Air to U.K. (Scheduled Flights), 2015 - 2017

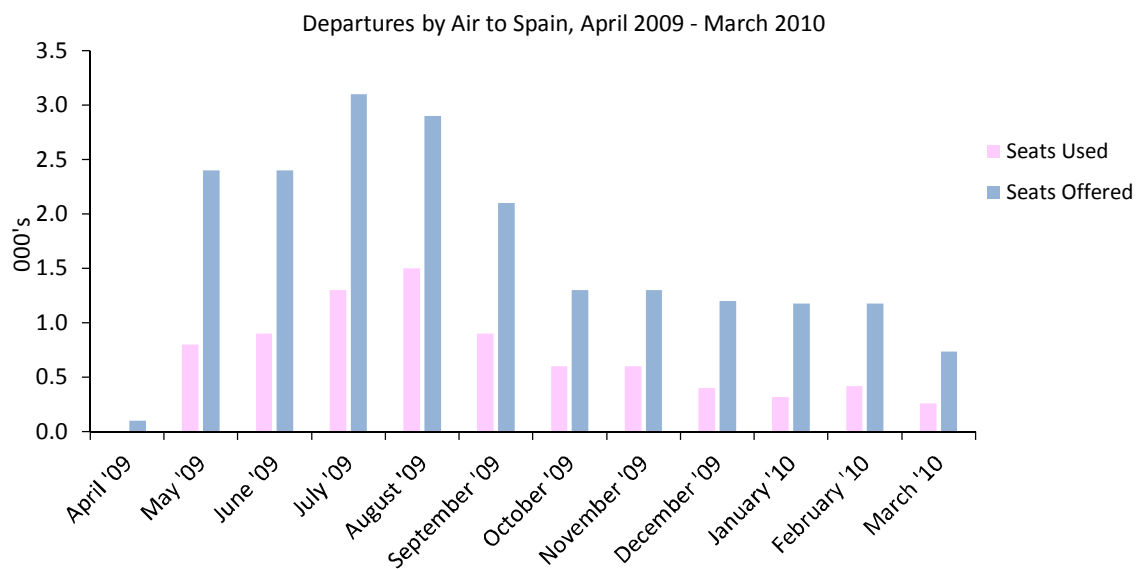
	Seats used (000's)			Seats offered (000's)			Load factor (%)		
	2015	2016	2017	2015	2016	2017	2015	2016	2017
January	12.6	15.0	17.4	16.3	19.4	22.2	77.1	77.6	78.4
February	12.3	14.7	17.7	15.5	18.9	22.0	79.8	78.0	80.3
March	14.8	17.6	21.6	17.7	23.5	27.2	83.5	75.0	79.4
April	16.7	21.1	28.3	19.5	25.8	32.5	85.6	82.0	86.9
May	18.8	23.6	28.0	22.9	31.6	32.6	82.1	74.7	85.8
June	20.9	25.2	29.0	23.8	30.5	32.1	87.7	82.6	90.1
July	21.6	27.5	30.3	25.2	34.7	35.3	85.7	79.4	85.7
August	23.9	30.7	33.2	25.7	35.4	35.3	92.8	86.9	94.0
September	23.5	30.0	32.1	24.6	33.0	34.3	95.6	90.9	93.8
October	22.7	28.2	20.2	24.9	32.6	21.2	91.0	86.4	95.6
November	18.0	20.4	13.2	20.5	24.6	13.6	87.5	82.7	96.8
December	14.3	18.4	11.8	19.9	25.3	13.5	71.7	72.5	86.9
Total	220.0	272.6	282.6	256.6	335.3	321.8	85.7	81.3	87.8



3: Departures by Air (Scheduled Flights)

Table 3.10 Departures by Air to Spain (Scheduled Flights), 2008 - 2010

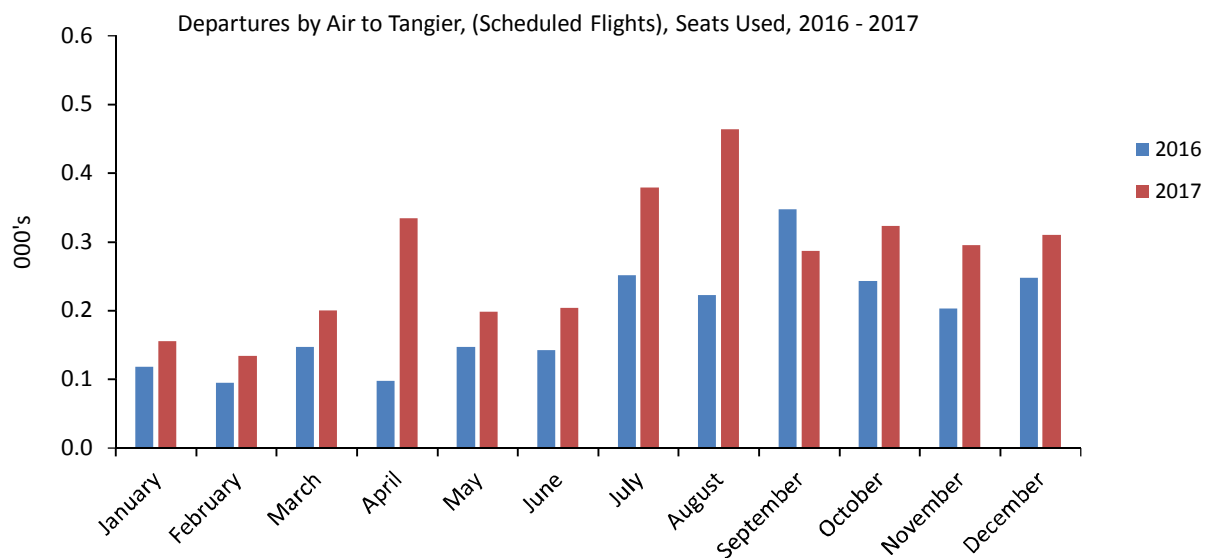
	Seats used (000's)			Seats offered (000's)			Load factor (%)		
	2008	2009	2010	2008	2009	2010	2008	2009	2010
January	0.4	-	0.3	1.1	-	1.2	35.7	-	27.0
February	0.4	-	0.4	1.3	-	1.2	34.5	-	35.5
March	0.6	-	0.3	1.3	-	0.7	47.2	-	35.5
April	0.3	-	-	1.1	0.1	-	25.1	29.6	-
May	0.4	0.8	-	1.3	2.4	-	34.0	33.4	-
June	0.6	0.9	-	1.0	2.4	-	56.7	37.4	-
July	0.6	1.3	-	1.1	3.1	-	55.8	41.5	-
August	0.9	1.5	-	1.4	2.9	-	67.3	50.5	-
September	0.5	0.9	-	1.1	2.1	-	45.7	42.2	-
October	-	0.6	-	-	1.3	-	-	44.1	-
November	-	0.6	-	-	1.3	-	-	47.3	-
December	-	0.4	-	-	1.2	-	-	36.3	-
Total	4.8	6.9	1.0	10.7	16.6	3.1	44.8	41.7	32.2



3: Departures by Air (Scheduled Flights)

Table 3.11 Departures by Air to Tangier (Scheduled Flights), 2015 - 2017

	Seats used (000's)			Seats offered (000's)			Load factor (%)		
	2015	2016	2017	2015	2016	2017	2015	2016	2017
January	-	0.1	0.2	-	0.6	0.6	-	21.1	24.6
February	-	0.1	0.1	-	0.6	0.5	-	17.0	27.3
March	-	0.1	0.2	0.1	0.6	0.6	-	23.3	31.7
April	0.2	0.1	0.3	0.6	0.6	0.6	5.7	17.5	53.0
May	0.1	0.1	0.2	0.6	0.6	0.6	17.0	23.3	35.4
June	0.1	0.1	0.2	0.6	0.6	0.6	20.2	22.5	32.4
July	0.2	0.3	0.4	0.6	0.6	0.6	31.0	39.8	60.2
August	0.2	0.2	0.5	0.6	0.6	0.6	39.0	39.6	73.7
September	0.2	0.3	0.3	0.6	0.6	0.6	36.1	55.1	51.3
October	0.2	0.2	0.3	0.6	0.6	0.6	28.7	38.6	57.7
November	0.1	0.2	0.3	0.6	0.6	0.6	21.3	36.3	46.8
December	0.2	0.2	0.3	0.6	0.6	0.6	24.0	44.3	49.2
Total	1.5	2.3	3.3	5.6	7.1	7.2	27.3	31.7	45.5



4: Arrivals by Air (Charter Flights)

Table 4.01 Arrivals by Air (Charter Flights), 2002 - 2004

	Seats used (000's)			Seats offered (000's)			Load factor (%)		
	2002	2003	2004	2002	2003	2004	2002	2003	2004
January	-	0.2	-	-	0.3	-	-	61.6	-
February	-	0.8	-	-	1.4	-	-	60.1	-
March	0.1	0.2	-	0.1	0.5	0.1	100.0	41.2	17.0
April	0.2	0.2	-	0.2	0.3	-	100.0	55.2	-
May	0.1	0.2	0.2	0.1	0.3	0.2	100.0	71.8	91.3
June	0.1	-	-	0.1	-	-	100.0	-	-
July	0.1	-	0.2	0.1	-	0.3	100.0	-	63.5
August	-	-	-	-	-	-	-	-	-
September	-	0.2	0.1	-	0.3	0.2	-	63.2	64.4
October	0.1	0.2	0.1	0.1	0.2	0.1	100.0	87.6	100.0
November	-	-	0.2	-	-	0.2	-	-	93.6
December	0.1	-	-	0.1	-	-	100.0	-	-
Total	0.9	2.0	0.9	0.9	3.3	1.2	100.0	59.9	74.4

Table 4.02 Arrivals by Air (Charter Flights), 2005 - 2007

	Seats used (000's)			Seats offered (000's)			Load factor (%)		
	2005	2006	2007	2005	2006	2007	2005	2006	2007
January	-	-	-	-	-	-	-	-	-
February	-	-	-	-	-	0.1	-	-	32.8
March	-	-	-	-	-	-	-	-	-
April	-	-	-	-	-	0.1	-	-	50.0
May	-	-	-	-	-	0.4	-	-	-
June	0.2	0.2	-	0.2	0.2	0.2	90.9	69.4	-
July	-	0.2	0.4	-	0.3	0.5	-	84.4	67.9
August	-	0.2	-	-	0.2	-	-	97.3	-
September	0.2	-	-	0.2	-	0.2	97.3	-	-
October	0.1	-	-	0.2	-	-	88.1	-	-
November	0.2	-	-	0.2	-	0.2	97.3	-	20.6
December	-	-	-	-	-	0.1	-	-	-
Total	0.8	0.6	0.5	0.8	0.7	1.8	93.7	83.8	25.0

4: Arrivals by Air (Charter Flights)

Table 4.03 Arrivals by Air (Charter Flights), 2009 - 2010, 2014

	Seats used (000's)			Seats offered (000's)			Load factor (%)		
	2009	2010	2014	2009	2010	2014	2009	2010	2014
January	-	-	-	-	-	-	-	-	-
February	-	-	-	-	-	-	-	-	-
March	-	-	-	-	-	-	-	-	-
April	-	-	0.1	-	-	0.2	-	-	46.2
May	-	0.2	0.1	-	0.4	0.5	-	56.7	24.5
June	-	-	0.1	-	-	0.1	-	-	40.7
July	-	-	-	-	-	0.1	-	-	16.4
August	0.2	-	-	0.2	-	-	83.1	-	-
September	-	0.3	-	-	0.5	-	-	67.3	-
October	-	-	-	-	-	-	-	-	-
November	-	-	-	-	-	-	-	-	-
December	-	-	-	-	-	-	-	-	-
Total	0.2	0.5	0.3	0.2	0.8	1.0	83.1	62.6	30.3

Table 4.04 Arrivals by Air (Charter Flights), 2015 - 2017

	Seats used (000's)			Seats offered (000's)			Load factor (%)		
	2015	2016	2017	2015	2016	2017	2015	2016	2017
January	-	-	-	-	-	-	-	-	-
February	-	-	-	-	-	-	-	-	-
March	-	-	-	-	-	-	-	-	-
April	-	-	-	-	-	-	-	-	-
May	-	0.1	-	-	0.2	-	-	90.4	-
June	0.2	-	-	0.3	-	-	84.0	-	-
July	-	-	0.2	-	0.1	0.2	-	66.0	100.0
August	-	-	-	-	-	-	-	-	-
September	-	-	-	-	-	-	-	-	-
October	-	-	-	-	-	-	-	-	-
November	-	-	-	-	-	-	-	-	-
December	-	-	-	-	-	-	-	-	-
Total	0.2	0.2	0.2	0.3	0.2	0.2	84.0	84.5	100.0

5: Departures by Air (Charter Flights)

Table 5.01 Departures by Air (Charter Flights), 2002 - 2004

	Seats used (000's)			Seats offered (000's)			Load factor (%)		
	2002	2003	2004	2002	2003	2004	2002	2003	2004
January	-	0.1	-	-	0.3	-	-	43.8	-
February	-	0.9	-	-	1.4	-	-	64.5	-
March	0.1	0.2	-	0.1	0.5	0.1	100.0	42.0	25.0
April	0.2	0.2	-	0.2	0.3	-	100.0	62.8	-
May	0.1	0.2	0.2	0.1	0.3	0.2	100.0	63.1	90.4
June	0.1	-	-	0.1	-	-	100.0	-	-
July	0.1	-	0.2	0.1	-	0.3	100.0	-	59.0
August	-	-	-	-	-	-	-	-	-
September	-	0.1	0.2	-	0.3	0.2	-	41.9	86.8
October	0.1	0.2	0.1	0.1	0.2	0.1	100.0	85.4	100.0
November	-	-	0.2	-	-	0.2	-	-	94.1
December	0.1	-	-	0.1	-	-	53.8	-	-
Total	0.9	1.9	0.9	0.9	3.3	1.2	94.6	58.2	78.1

Table 5.02 Departures by Air (Charter Flights), 2005 - 2007

	Seats used (000's)			Seats offered (000's)			Load factor (%)		
	2005	2006	2007	2005	2006	2007	2005	2006	2007
January	-	-	-	-	-	-	-	-	-
February	-	-	-	-	-	0.1	-	-	32.8
March	-	-	-	-	-	-	-	-	-
April	-	-	-	-	-	0.1	-	-	50.0
May	-	-	0.2	-	-	0.4	-	-	59.6
June	0.2	0.2	0.2	0.2	0.2	0.2	80.8	95.0	100.0
July	-	0.2	0.2	-	0.3	0.5	-	85.8	42.0
August	-	0.1	-	-	0.2	-	-	63.5	78.6
September	0.2	-	0.2	0.2	-	0.2	68.9	-	73.5
October	0.2	-	-	0.2	-	-	98.8	-	-
November	0.2	-	-	0.2	-	0.2	89.0	-	18.6
December	-	-	0.1	-	-	0.1	-	-	73.6
Total	0.7	0.6	1.0	0.8	0.7	1.8	83.5	81.8	56.0

5: Departures by Air (Charter Flights)

Table 5.03 Departures by Air (Charter Flights), 2009 - 2010, 2014

	Seats used (000's)			Seats offered (000's)			Load factor (%)		
	2009	2010	2014	2009	2010	2014	2009	2010	2014
January	-	-	-	-	-	-	-	-	-
February	-	-	-	-	-	-	-	-	-
March	-	-	-	-	-	-	-	-	-
April	-	-	0.1	-	-	0.2	-	-	43.8
May	-	0.2	0.1	-	0.4	0.5	-	65.3	19.0
June	-	-	0.1	-	-	0.1	-	-	46.4
July	-	-	-	-	-	0.1	-	-	12.9
August	0.2	-	-	0.2	-	-	88.6	-	-
September	-	0.3	-	-	0.5	-	-	73.4	-
October	-	-	-	-	-	-	-	-	-
November	-	-	-	-	-	-	-	-	-
December	-	-	-	-	-	-	-	-	-
Total	0.2	0.6	0.3	0.2	0.8	1.0	88.6	69.8	27.3

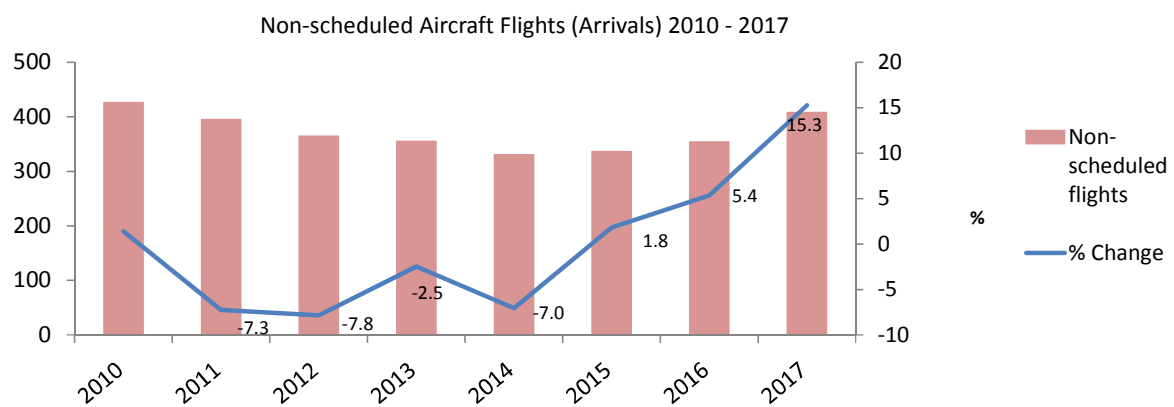
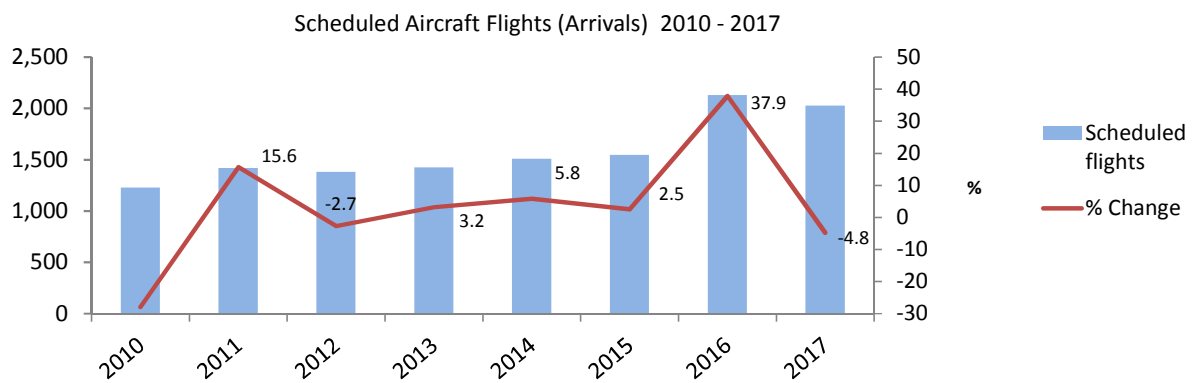
Table 5.04 Departures by Air (Charter Flights), 2015 - 2017

	Seats used (000's)			Seats offered (000's)			Load factor (%)		
	2015	2016	2017	2015	2016	2017	2015	2016	2017
January	-	-	-	-	-	-	-	-	-
February	-	-	-	-	-	-	-	-	-
March	-	-	-	-	-	-	-	-	-
April	-	-	-	-	-	-	-	-	-
May	-	-	-	-	0.2	-	-	-	-
June	-	-	-	-	-	-	80.0	-	-
July	0.2	0.0	0.2	0.2	0.1	0.2	84.8	66.0	100.0
August	-	-	-	-	-	-	-	-	-
September	-	-	-	-	-	-	-	-	-
October	-	-	-	-	-	-	-	-	-
November	-	-	-	-	-	-	-	-	-
December	-	-	-	-	-	-	-	-	-
Total	0.2	0.0	0.2	0.3	0.2	0.2	84.0	16.0	100.0

6: Aircraft Arrivals

Table 6.01 Aircraft Arrivals, 2010 - 2017

Year	Scheduled flights	Non-scheduled flights ⁽ⁱ⁾	Total flights
2010	1,227	426	1,653
2011	1,419	395	1,814
2012	1,381	364	1,745
2013	1,425	355	1,780
2014	1,507	330	1,837
2015	1,545	336	1,881
2016	2,130	354	2,484
2017	2,027	408	2,435



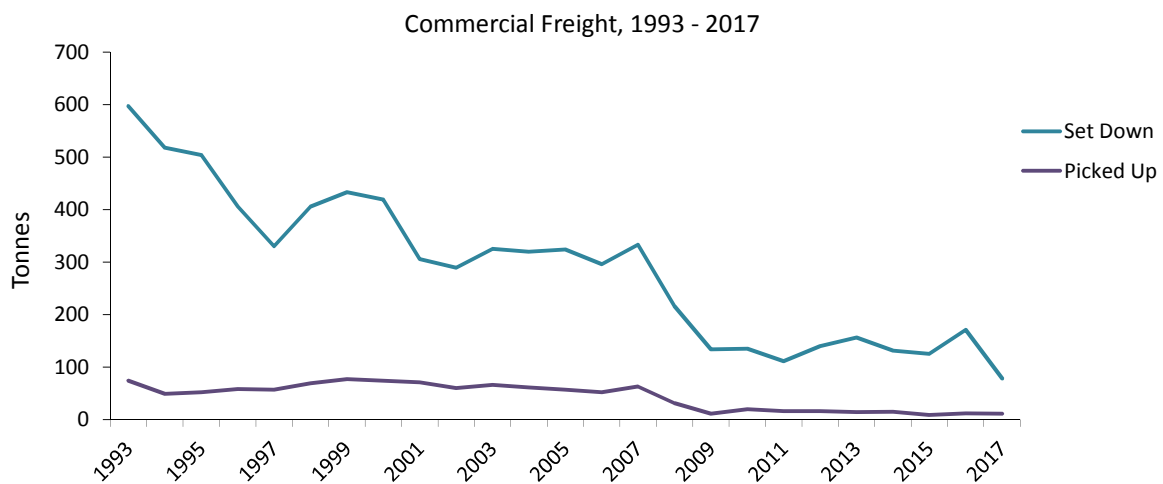
Note:

(i) Non-scheduled flights include commercial charters, business jets and light aircrafts.

7: Commercial Freight

Table 7.01 Commercial Freight, Set Down/Picked Up by Air, Gibraltar, 1993 - 2017

Year	Set Down (000's kgs)	% Change	Picked Up (000's kgs)	% Change
1993	597	-	74	-
1994	518	-13.2	49	-33.8
1995	504	-2.7	52	6.1
1996	406	-19.4	58	11.5
1997	330	-18.7	57	-1.7
1998	406	23.0	69	21.1
1999	433	6.7	77	11.6
2000	419	-3.2	74	-3.9
2001	306	-27.0	71	-4.1
2002	289	-5.6	60	-15.5
2003	325	12.5	66	10.0
2004	320	-1.5	61	-7.6
2005	324	1.3	57	-6.6
2006	296	-8.6	52	-8.8
2007	333	12.5	63	21.2
2008	216	-35.1	31	-50.8
2009	134	-38.0	11	-64.5
2010	135	0.7	20	81.8
2011	111	-17.8	16	-20.0
2012	140	26.1	16	0.0
2013	156	11.4	14	-12.5
2014	131	-16.0	15	7.1
2015	125	-4.6	9	-40.0
2016	171	36.8	12	33.3
2017	78	-54.4	11	-8.3



Note:
Commercial freight includes from/to all destinations.