



GOVERNMENT OF GIBRALTAR

**AIR TRAFFIC
SURVEY
2007**

STATISTICS OFFICE



GOVERNMENT OF GIBRALTAR

AIR TRAFFIC SURVEY 2007

STATISTICS OFFICE

Government of Gibraltar
Statistics Office

Statistics Online

Copies of the Air Traffic Survey can be obtained, free of charge from the Statistics Office and are also available electronically on the Gibraltar Government Website www.gibraltar.gov.gi.

Historic data can be downloaded from previous copies of the report available on-line.

Comments and requests for general information should be addressed to:

Statistics Office
99 New Harbours
The New Harbours

Or

E-mail: statistics@gibraltar.gov.gi

Tel: +350 200 75515/ +350 200 75490

Fax: +350 200 51160

PREFACE

The Statistics (Air Traffic Survey) Order 1971 requires that a report and summary of the findings of the Air Traffic Survey be laid before the Gibraltar Parliament. This is the thirty-second report and contains a summary of statistics collected for the years 1983 to 2007.

The report contains statistical data on air traffic operations between Gibraltar and other destinations for both scheduled and charter airlines. The report also includes some general data on commercial freight.

I must express my thanks to the Airlines and to Terminal Management Ltd for their continued co-operation in the conduct of this Survey.

GOVERNMENT STATISTICIAN

FEBRUARY 2008

- C O N T E N T S -

A. Definitions

| <u>TABLES</u> | <u>DESCRIPTION</u> | <u>PAGE</u> |
|---------------|---|-------------|
| 1 | Arrivals/Departures by Air, 1983 - 2007 | 1 |
| Chart | Arrivals by Air, 1983 - 2007 | |
| 2(a) | Arrivals by Air from U.K. (Scheduled Flights), 1983 - 1986 | 2 |
| 2(b) | Arrivals by Air from U.K. (Scheduled Flights), 1987 - 1990 | |
| 2(c) | Arrivals by Air from U.K. (Scheduled Flights), 1991 - 1994 | 3 |
| 2(d) | Arrivals by Air from U.K. (Scheduled Flights), 1995 - 1998 | |
| 2(e) | Arrivals by Air from U.K. (Scheduled Flights), 1999 - 2002 | 4 |
| 2(f) | Arrivals by Air from U.K. (Scheduled Flights), 2003 - 2006 | |
| 2(g) | Arrivals by Air from U.K. (Scheduled Flights), 2007 | 5 |
| Chart | Arrivals by Air from U.K. (Scheduled Flights), 2007 | |
| Chart | Arrivals by Air from U.K. (Scheduled Flights), Load Factor, 2007 | |
| 2(h) | Arrivals by Air from Spain (Scheduled Flights), 2007 | 6 |
| Chart | Arrivals by Air from Spain (Scheduled Flights), 2007 | |
| Chart | Arrivals by Air from Spain (Scheduled Flights), Load Factor, 2007 | |
| 3(a) | Departures by Air to U.K. (Scheduled Flights), 1983 - 1985 | 7 |
| 3(b) | Departures by Air to U.K. (Scheduled Flights), 1986 - 1988 | |
| 3(c) | Departures by Air to U.K. (Scheduled Flights), 1989 - 1991 | 8 |
| 3(d) | Departures by Air to U.K. (Scheduled Flights), 1992 - 1994 | |
| 3(e) | Departures by Air to U.K. (Scheduled Flights), 1995 - 1997 | 9 |
| 3(f) | Departures by Air to U.K. (Scheduled Flights), 1998 - 2000 | |
| 3(g) | Departures by Air to U.K. (Scheduled Flights), 2001 - 2003 | 10 |
| 3(h) | Departures by Air to U.K. (Scheduled Flights), 2004 - 2006 | |
| 3(i) | Departures by Air to U.K. (Scheduled Flights), 2007 | 11 |
| Chart | Departures by Air to U.K. (Scheduled Flights), 2007 | |
| Chart | Departures by Air to U.K. (Scheduled Flights), Load Factor, 2007 | |
| 3(j) | Departures by Air to Spain (Scheduled Flights), 2007 | 12 |
| Chart | Departures by Air to Spain (Scheduled Flights), 2007 | |
| Chart | Departures by Air to Spain (Scheduled Flights), Load Factor, 2007 | |
| 4(a) | Arrivals by Air from U.K. (Charter Flights), 1986 - 1989 | 13 |
| 4(b) | Arrivals by Air from U.K. (Charter Flights), 1990 - 1992 & 1998 | |
| 4(c) | Arrivals by Air from U.K. (Charter Flights), 1999 - 2002 | 14 |
| 4(d) | Arrivals by Air from U.K. (Charter Flights), 2003 - 2006 | |
| 4(e) | Arrivals by Air (Charter Flights), 2007 | 15 |
| 5(a) | Departures by Air to U.K. (Charter Flights), 1986 - 1989 | 16 |
| 5(b) | Departures by Air to U.K. (Charter Flights), 1990 - 1992 & 1998 | |
| 5(c) | Departures by Air to U.K. (Charter Flights), 1999 - 2002 | 17 |
| 5(d) | Departures by Air to U.K. (Charter Flights), 2003 - 2006 | |
| 5(e) | Departures by Air (Charter Flights), 2007 | 18 |
| 6 | Commercial Freight, Set Down/Picked Up, Gibraltar, 1983 - 2007 | 19 |
| Chart | Commercial Freight, 1983 - 2007 | |

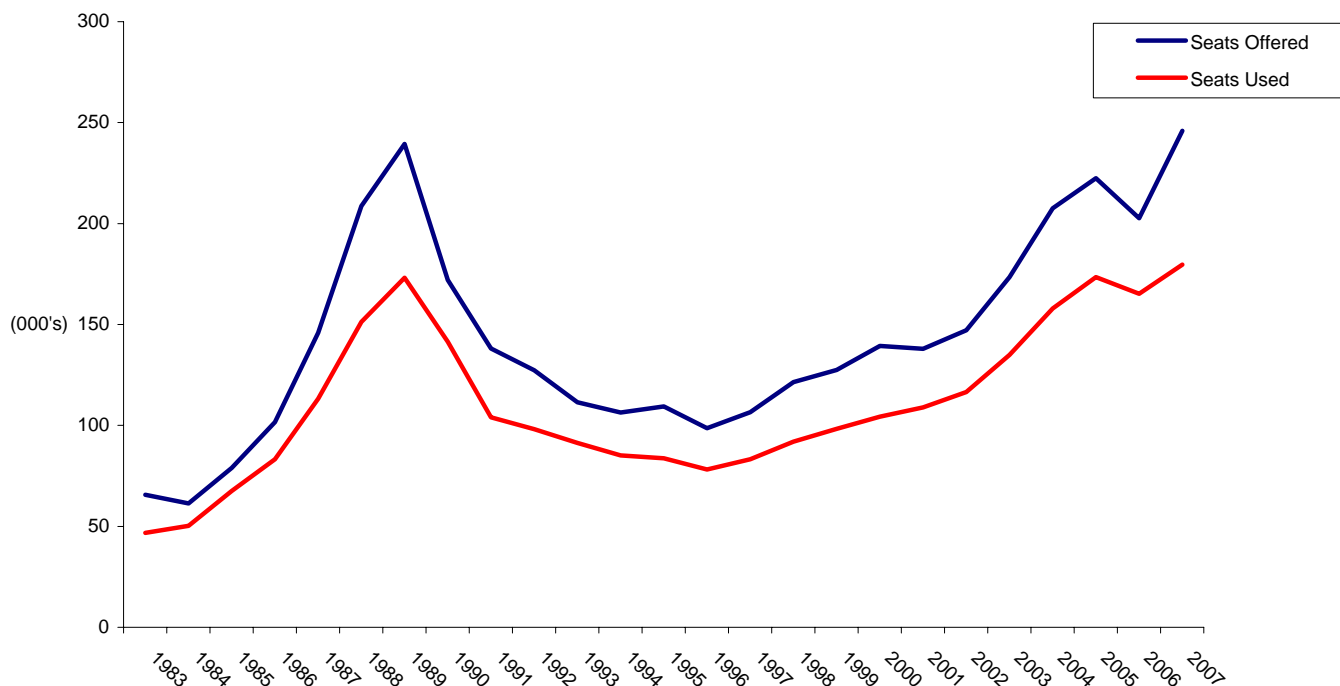
A. DEFINITIONS

- (a) Passenger Load Factor: $\frac{\text{All seats used}}{\text{All seats offered (less in-transits)}} \times 100$
- (b) Revenue Load Factor: $\frac{\text{All seats used by "paying" passengers}}{\text{All seats offered (less in-transits)}} \times 100$
- (c) Scheduled Services: are those performed according to a published timetable including those supplementary thereto, and available for use by members of the public.
- (d) Charter Services: includes flights carrying 10 or more passengers, other than scheduled services and Ministry of Defence Charters.

Table 1: Arrivals/Departures by Air 1983 - 2007

| YEAR | ARRIVALS (000's) | | | | | | DEPARTURES (000's) | | | | | |
|------|------------------|------------|---------------|------------|---------------|------------|--------------------|------------|---------------|------------|---------------|------------|
| | TOTAL | | SCHEDULED | | CHARTER | | TOTAL | | SCHEDULED | | CHARTER | |
| | Seats Offered | Seats Used | Seats Offered | Seats Used | Seats Offered | Seats Used | Seats Offered | Seats Used | Seats Offered | Seats Used | Seats Offered | Seats Used |
| 1983 | 65.6 | 46.7 | 40.4 | 26.3 | 25.2 | 20.5 | 65.6 | 47.5 | 40.4 | 26.8 | 25.2 | 20.7 |
| 1984 | 61.3 | 50.3 | 34.6 | 27.4 | 26.7 | 22.9 | 61.2 | 51.0 | 34.6 | 27.6 | 26.7 | 23.4 |
| 1985 | 79.0 | 67.6 | 59.5 | 50.3 | 19.5 | 17.3 | 79.0 | 67.7 | 59.7 | 50.0 | 19.3 | 17.7 |
| 1986 | 101.7 | 83.2 | 96.9 | 79.1 | 4.8 | 4.1 | 101.8 | 84.1 | 96.9 | 80.1 | 4.9 | 4.0 |
| 1987 | 145.9 | 113.2 | 129.8 | 98.1 | 16.1 | 15.1 | 145.4 | 114.8 | 129.3 | 100.9 | 16.1 | 13.9 |
| 1988 | 208.7 | 151.2 | 196.0 | 139.6 | 12.7 | 11.6 | 208.3 | 156.1 | 195.6 | 144.6 | 12.7 | 11.5 |
| 1989 | 239.4 | 173.2 | 231.6 | 167.6 | 7.8 | 5.6 | 237.8 | 179.8 | 230.0 | 174.0 | 7.8 | 5.8 |
| 1990 | 172.0 | 141.5 | 165.8 | 136.8 | 6.2 | 4.7 | 175.1 | 148.5 | 168.9 | 143.8 | 6.2 | 4.7 |
| 1991 | 138.1 | 104.0 | 126.0 | 94.9 | 12.1 | 9.1 | 140.2 | 106.3 | 127.8 | 96.6 | 12.4 | 9.7 |
| 1992 | 127.4 | 98.1 | 127.0 | 97.7 | 0.4 | 0.4 | 128.2 | 101.0 | 127.7 | 100.5 | 0.5 | 0.4 |
| 1993 | 111.5 | 91.3 | 111.4 | 91.2 | 0.1 | 0.1 | 112.2 | 93.3 | 112.2 | 93.3 | 0.0 | 0.0 |
| 1994 | 106.4 | 85.2 | 106.4 | 85.2 | 0.0 | 0.0 | 107.1 | 86.9 | 207.2 | 86.9 | 0.0 | 0.0 |
| 1995 | 109.4 | 83.8 | 109.4 | 83.8 | 0.0 | 0.0 | 109.5 | 85.3 | 109.5 | 85.3 | 0.0 | 0.0 |
| 1996 | 98.7 | 78.1 | 98.7 | 78.1 | 0.0 | 0.0 | 98.1 | 78.2 | 98.1 | 78.2 | 0.0 | 0.0 |
| 1997 | 106.6 | 83.2 | 106.6 | 83.2 | 0.0 | 0.0 | 104.4 | 81.5 | 104.4 | 81.5 | 0.0 | 0.0 |
| 1998 | 121.5 | 92.0 | 120.4 | 91.0 | 1.2 | 1.1 | 120.2 | 91.0 | 119.0 | 90.1 | 1.2 | 0.9 |
| 1999 | 127.5 | 98.3 | 126.5 | 97.8 | 1.0 | 0.5 | 127.5 | 97.9 | 126.5 | 97.4 | 1.0 | 0.5 |
| 2000 | 139.4 | 104.3 | 138.6 | 103.7 | 0.8 | 0.5 | 138.9 | 107.1 | 138.1 | 106.6 | 0.8 | 0.5 |
| 2001 | 138.0 | 109.0 | 137.7 | 108.8 | 0.3 | 0.2 | 138.2 | 110.6 | 137.9 | 110.5 | 0.4 | 0.2 |
| 2002 | 147.2 | 116.6 | 146.3 | 115.7 | 0.9 | 0.9 | 147.0 | 114.8 | 146.1 | 114.0 | 0.9 | 0.9 |
| 2003 | 173.5 | 135.0 | 170.3 | 133.0 | 3.3 | 2.0 | 173.1 | 134.8 | 169.8 | 132.9 | 3.3 | 1.9 |
| 2004 | 207.6 | 157.9 | 206.4 | 157.0 | 1.2 | 0.9 | 207.6 | 158.3 | 206.4 | 157.3 | 1.2 | 0.9 |
| 2005 | 222.4 | 173.5 | 221.6 | 172.7 | 0.8 | 0.8 | 222.2 | 174.4 | 221.4 | 173.7 | 0.8 | 0.7 |
| 2006 | 202.7 | 165.2 | 202.0 | 164.6 | 0.7 | 0.6 | 202.6 | 166.0 | 201.9 | 165.4 | 0.7 | 0.6 |
| 2007 | 245.9 | 179.7 | 244.1 | 179.3 | 1.8 | 0.5 | 246.2 | 181.6 | 244.3 | 180.6 | 1.8 | 1.0 |

ARRIVALS BY AIR 1983 - 2007



Notes: (i) Charter flights as from 1998 include all destinations. The yearly totals have been rounded off from the actual figure and need not necessarily equal the sum of the rounded off sub-totals.
(ii) Flights to and from Madrid commenced on 16th December 2006.

Table 2(a): Arrivals by Air from U.K. (Scheduled Flights), 1983 - 1986

| <u>MONTH</u> | <u>(000's)</u> | | | | <u>(000's)</u> | | | | <u>% (i)</u> | | | |
|--------------|-------------------|-------------|-------------|-------------|----------------------|-------------|-------------|-------------|--------------------|-------------|-------------|-------------|
| | <u>SEATS USED</u> | | | | <u>SEATS OFFERED</u> | | | | <u>LOAD FACTOR</u> | | | |
| | <u>1983</u> | <u>1984</u> | <u>1985</u> | <u>1986</u> | <u>1983</u> | <u>1984</u> | <u>1985</u> | <u>1986</u> | <u>1983</u> | <u>1984</u> | <u>1985</u> | <u>1986</u> |
| JANUARY | 1.6 | 1.5 | 2.1 | 4.1 | 2.9 | 2.6 | 2.6 | 7.0 | 55.0 | 59.8 | 79.1 | 58.6 |
| FEBRUARY | 1.5 | 1.7 | 2.0 | 4.4 | 2.6 | 2.1 | 2.2 | 5.9 | 59.0 | 81.8 | 90.9 | 75.2 |
| MARCH | 2.1 | 2.1 | 3.0 | 6.5 | 3.0 | 2.4 | 3.2 | 7.1 | 70.3 | 87.2 | 97.0 | 92.2 |
| APRIL | 2.3 | 2.5 | 3.9 | 5.6 | 3.9 | 3.1 | 4.6 | 7.2 | 59.2 | 79.2 | 84.8 | 77.4 |
| MAY | 2.2 | 2.3 | 3.9 | 7.4 | 4.0 | 3.2 | 4.4 | 8.7 | 55.4 | 70.1 | 89.5 | 84.8 |
| JUNE | 2.4 | 2.2 | 4.3 | 7.1 | 3.9 | 3.3 | 5.0 | 8.5 | 60.3 | 68.9 | 86.4 | 83.2 |
| JULY | 3.0 | 2.9 | 5.4 | 8.3 | 4.0 | 3.4 | 5.7 | 9.0 | 74.4 | 86.1 | 95.2 | 92.2 |
| AUGUST | 2.8 | 2.8 | 5.8 | 8.7 | 4.0 | 3.2 | 6.5 | 9.8 | 70.5 | 86.7 | 89.2 | 88.2 |
| SEPTEMBER | 2.7 | 2.5 | 4.7 | 7.6 | 3.9 | 3.2 | 5.8 | 8.9 | 68.0 | 76.4 | 79.8 | 85.0 |
| OCTOBER | 2.3 | 2.6 | 5.1 | 7.8 | 3.6 | 3.2 | 5.8 | 9.1 | 63.0 | 79.3 | 86.7 | 85.4 |
| NOVEMBER | 1.6 | 2.0 | 4.6 | 5.1 | 2.2 | 2.4 | 6.3 | 7.4 | 71.1 | 85.0 | 73.4 | 69.4 |
| DECEMBER | 1.8 | 2.3 | 5.5 | 6.5 | 2.4 | 2.5 | 7.4 | 8.2 | 77.1 | 90.1 | 74.1 | 78.6 |
| TOTAL | 26.3 | 27.4 | 50.3 | 79.1 | 40.4 | 34.6 | 59.5 | 96.9 | 65.0 | 79.0 | 84.5 | 81.6 |

Table 2(b): Arrivals by Air from U.K. (Scheduled Flights), 1987 - 1990

| <u>MONTH</u> | <u>(000's)</u> | | | | <u>(000's)</u> | | | | <u>% (i)</u> | | | |
|--------------|-------------------|--------------|--------------|--------------|----------------------|--------------|--------------|--------------|--------------------|-------------|-------------|-------------|
| | <u>SEATS USED</u> | | | | <u>SEATS OFFERED</u> | | | | <u>LOAD FACTOR</u> | | | |
| | <u>1987</u> | <u>1988</u> | <u>1989</u> | <u>1990</u> | <u>1987</u> | <u>1988</u> | <u>1989</u> | <u>1990</u> | <u>1987</u> | <u>1988</u> | <u>1989</u> | <u>1990</u> |
| JANUARY | 4.7 | 7.0 | 9.7 | 10.0 | 7.8 | 12.7 | 18.0 | 15.1 | 60.3 | 55.2 | 53.9 | 66.3 |
| FEBRUARY | 5.0 | 8.4 | 10.4 | 10.6 | 6.6 | 11.3 | 14.4 | 13.1 | 76.2 | 74.9 | 72.4 | 81.1 |
| MARCH | 7.0 | 10.6 | 13.6 | 12.9 | 8.6 | 13.1 | 17.8 | 14.8 | 81.9 | 81.2 | 76.3 | 87.1 |
| APRIL | 7.6 | 10.4 | 11.9 | 11.6 | 8.4 | 14.2 | 17.6 | 14.2 | 90.0 | 73.7 | 67.7 | 82.2 |
| MAY | 9.0 | 13.1 | 14.9 | 12.2 | 11.4 | 17.2 | 19.3 | 13.8 | 79.3 | 76.3 | 77.2 | 88.1 |
| JUNE | 8.1 | 11.9 | 14.7 | 12.1 | 12.0 | 16.2 | 19.8 | 13.7 | 67.7 | 73.6 | 74.3 | 88.3 |
| JULY | 10.6 | 15.5 | 20.3 | 13.9 | 12.4 | 19.5 | 24.8 | 14.6 | 85.3 | 79.7 | 81.8 | 95.5 |
| AUGUST | 10.7 | 14.6 | 18.5 | 12.5 | 12.4 | 18.1 | 24.4 | 14.3 | 85.9 | 80.7 | 75.8 | 87.2 |
| SEPTEMBER | 8.7 | 14.0 | 16.5 | 12.3 | 11.6 | 18.0 | 22.2 | 13.9 | 74.8 | 77.9 | 74.3 | 88.5 |
| OCTOBER | 9.8 | 14.1 | 16.3 | 11.5 | 12.4 | 18.4 | 22.5 | 14.5 | 79.4 | 76.7 | 72.1 | 79.2 |
| NOVEMBER | 7.7 | 8.9 | 9.9 | 8.4 | 13.0 | 14.7 | 15.5 | 11.6 | 59.4 | 60.2 | 63.7 | 72.2 |
| DECEMBER | 8.7 | 10.9 | 10.9 | 8.8 | 12.9 | 16.3 | 15.3 | 12.1 | 67.4 | 67.3 | 71.5 | 72.3 |
| TOTAL | 97.6 | 139.4 | 167.6 | 136.8 | 129.5 | 189.7 | 231.6 | 165.6 | 75.2 | 73.5 | 72.4 | 82.5 |

Note: (i) All load factors are calculated on the basis of actual figures. The total yearly figure has been rounded off from the actual figure and need not necessarily equal the sum of the rounded off monthly figures.

Table 2(c): Arrivals by Air from U.K. (Scheduled Flights), 1991 - 1994

| <u>MONTH</u> | <u>(000's)</u> | | | | <u>(000's)</u> | | | | <u>% (i)</u> | | | |
|--------------|-------------------|-------------|-------------|-------------|----------------------|--------------|--------------|--------------|--------------------|-------------|-------------|-------------|
| | <u>SEATS USED</u> | | | | <u>SEATS OFFERED</u> | | | | <u>LOAD FACTOR</u> | | | |
| | <u>1991</u> | <u>1992</u> | <u>1993</u> | <u>1994</u> | <u>1991</u> | <u>1992</u> | <u>1993</u> | <u>1994</u> | <u>1991</u> | <u>1992</u> | <u>1993</u> | <u>1994</u> |
| JANUARY | 7.3 | 6.2 | 5.7 | 5.1 | 12.2 | 10.0 | 7.4 | 7.1 | 59.3 | 61.2 | 77.9 | 71.3 |
| FEBRUARY | 6.8 | 6.2 | 5.5 | 5.0 | 10.4 | 8.7 | 6.1 | 5.9 | 65.9 | 71.0 | 90.7 | 83.5 |
| MARCH | 7.4 | 7.7 | 7.1 | 6.9 | 9.2 | 9.2 | 7.5 | 7.4 | 81.3 | 83.0 | 95.9 | 93.8 |
| APRIL | 6.7 | 9.1 | 8.2 | 6.7 | 7.9 | 12.8 | 10.2 | 9.4 | 84.1 | 71.1 | 79.9 | 71.0 |
| MAY | 7.5 | 9.3 | 8.6 | 8.3 | 8.3 | 12.5 | 11.1 | 9.9 | 90.7 | 74.1 | 76.7 | 83.2 |
| JUNE | 7.9 | 9.6 | 8.6 | 8.3 | 9.5 | 12.0 | 11.1 | 10.6 | 83.5 | 79.8 | 77.7 | 79.0 |
| JULY | 10.8 | 11.5 | 10.1 | 9.6 | 12.3 | 12.5 | 10.9 | 10.8 | 88.1 | 92.2 | 92.3 | 89.0 |
| AUGUST | 9.7 | 9.8 | 8.8 | 8.4 | 11.9 | 12.6 | 11.0 | 11.2 | 81.3 | 77.4 | 79.9 | 75.4 |
| SEPTEMBER | 9.0 | 6.9 | 8.7 | 8.3 | 11.5 | 8.3 | 10.7 | 10.2 | 78.1 | 82.9 | 81.5 | 80.8 |
| OCTOBER | 8.6 | 9.0 | 7.9 | 7.5 | 11.7 | 11.9 | 11.2 | 9.8 | 74.0 | 75.6 | 70.5 | 76.3 |
| NOVEMBER | 6.7 | 6.6 | 6.1 | 5.3 | 11.1 | 8.8 | 7.3 | 6.9 | 60.4 | 74.7 | 84.0 | 76.3 |
| DECEMBER | 6.5 | 6.0 | 5.8 | 5.9 | 10.2 | 7.5 | 6.9 | 7.2 | 63.4 | 79.5 | 84.8 | 82.4 |
| TOTAL | 94.9 | 97.7 | 91.2 | 85.2 | 126.0 | 127.0 | 111.4 | 106.4 | 75.3 | 76.9 | 81.9 | 80.0 |

Table 2(d): Arrivals by Air from U.K. (Scheduled Flights), 1995 - 1998

| <u>MONTH</u> | <u>(000's)</u> | | | | <u>(000's)</u> | | | | <u>% (i)</u> | | | |
|--------------|-------------------|-------------|-------------|-------------|----------------------|-------------|--------------|--------------|--------------------|-------------|-------------|-------------|
| | <u>SEATS USED</u> | | | | <u>SEATS OFFERED</u> | | | | <u>LOAD FACTOR</u> | | | |
| | <u>1995</u> | <u>1996</u> | <u>1997</u> | <u>1998</u> | <u>1995</u> | <u>1996</u> | <u>1997</u> | <u>1998</u> | <u>1995</u> | <u>1996</u> | <u>1997</u> | <u>1998</u> |
| JANUARY | 4.1 | 4.6 | 4.6 | 4.8 | 7.8 | 7.7 | 7.9 | 9.4 | 53.0 | 53.9 | 57.8 | 51.1 |
| FEBRUARY | 5.6 | 5.5 | 5.2 | 6.0 | 6.6 | 7.7 | 6.3 | 9.0 | 84.2 | 68.9 | 83.0 | 66.4 |
| MARCH | 7.3 | 7.0 | 6.1 | 7.6 | 7.8 | 8.4 | 6.9 | 9.8 | 93.8 | 83.7 | 87.4 | 78.1 |
| APRIL | 7.7 | 6.3 | 5.4 | 7.8 | 10.1 | 8.5 | 6.6 | 10.0 | 76.0 | 74.3 | 82.3 | 77.9 |
| MAY | 8.1 | 7.7 | 8.6 | 9.0 | 10.3 | 9.0 | 9.9 | 11.4 | 78.1 | 86.4 | 86.4 | 79.0 |
| JUNE | 7.6 | 7.5 | 7.6 | 8.0 | 9.8 | 8.7 | 9.4 | 10.9 | 77.0 | 85.6 | 80.2 | 73.6 |
| JULY | 8.8 | 7.6 | 8.6 | 9.3 | 10.3 | 8.4 | 9.5 | 10.6 | 85.8 | 90.7 | 90.8 | 87.3 |
| AUGUST | 7.8 | 6.6 | 8.3 | 9.2 | 10.1 | 7.5 | 10.0 | 11.2 | 77.7 | 87.8 | 83.4 | 82.2 |
| SEPTEMBER | 7.2 | 7.2 | 8.1 | 8.4 | 9.3 | 8.4 | 10.7 | 10.7 | 77.7 | 86.4 | 75.6 | 78.0 |
| OCTOBER | 7.3 | 6.6 | 8.5 | 8.2 | 10.0 | 8.5 | 10.4 | 11.2 | 73.7 | 78.3 | 81.1 | 73.1 |
| NOVEMBER | 5.8 | 5.8 | 5.9 | 6.5 | 8.4 | 7.8 | 9.2 | 8.4 | 69.5 | 74.5 | 63.7 | 78.0 |
| DECEMBER | 6.5 | 5.7 | 6.4 | 6.3 | 8.9 | 8.1 | 9.8 | 7.9 | 73.8 | 70.7 | 65.8 | 79.7 |
| TOTAL | 83.8 | 78.1 | 83.2 | 91.0 | 109.4 | 98.7 | 106.6 | 120.4 | 76.7 | 79.1 | 78.0 | 75.6 |

Note: (i) All load factors are calculated on the basis of actual figures. The total yearly figure has been rounded off from the actual figure and need not necessarily equal the sum of the rounded off monthly figures.

Table 2(e): Arrivals by Air from U.K. (Scheduled Flights), 1999 - 2002

| <u>MONTH</u> | <u>(000's)</u> | | | | <u>(000's)</u> | | | | <u>% (i)</u> | | | |
|--------------|-------------------|--------------|--------------|--------------|----------------------|--------------|--------------|--------------|--------------------|-------------|-------------|-------------|
| | <u>SEATS USED</u> | | | | <u>SEATS OFFERED</u> | | | | <u>LOAD FACTOR</u> | | | |
| | <u>1999</u> | <u>2000</u> | <u>2001</u> | <u>2002</u> | <u>1999</u> | <u>2000</u> | <u>2001</u> | <u>2002</u> | <u>1999</u> | <u>2000</u> | <u>2001</u> | <u>2002</u> |
| JANUARY | 5.2 | 4.6 | 5.4 | 5.5 | 8.4 | 11.1 | 9.4 | 9.3 | 62.5 | 41.5 | 57.3 | 59.6 |
| FEBRUARY | 6.3 | 6.2 | 6.9 | 7.6 | 7.4 | 9.8 | 8.3 | 8.9 | 84.5 | 63.6 | 82.7 | 85.9 |
| MARCH | 8.1 | 8.7 | 8.6 | 10.2 | 8.8 | 10.7 | 9.8 | 11.7 | 91.4 | 81.3 | 87.9 | 87.4 |
| APRIL | 7.8 | 9.1 | 9.0 | 8.0 | 9.8 | 10.4 | 10.6 | 10.7 | 80.4 | 87.2 | 84.5 | 75.2 |
| MAY | 10.0 | 10.1 | 11.1 | 10.4 | 12.5 | 13.4 | 13.2 | 14.1 | 80.3 | 75.9 | 83.6 | 73.8 |
| JUNE | 9.8 | 9.7 | 11.0 | 10.4 | 11.8 | 12.4 | 12.8 | 13.3 | 82.7 | 78.3 | 85.7 | 78.3 |
| JULY | 10.7 | 10.8 | 11.7 | 13.2 | 12.4 | 13.4 | 13.5 | 14.6 | 85.8 | 80.8 | 86.6 | 90.4 |
| AUGUST | 9.2 | 10.1 | 10.5 | 12.2 | 11.6 | 12.9 | 13.4 | 14.3 | 79.2 | 78.1 | 78.3 | 85.5 |
| SEPTEMBER | 8.9 | 10.5 | 10.2 | 11.4 | 11.8 | 12.7 | 12.8 | 13.6 | 75.6 | 82.5 | 79.5 | 83.6 |
| OCTOBER | 8.3 | 10.0 | 9.5 | 11.0 | 11.7 | 13.4 | 13.4 | 14.4 | 70.3 | 74.6 | 70.9 | 76.4 |
| NOVEMBER | 6.5 | 7.0 | 7.5 | 8.0 | 9.7 | 9.1 | 10.6 | 10.7 | 67.0 | 76.2 | 71.1 | 74.7 |
| DECEMBER | 7.1 | 7.0 | 7.5 | 7.6 | 10.6 | 9.3 | 9.7 | 10.7 | 66.9 | 75.0 | 76.5 | 71.4 |
| TOTAL | 97.8 | 103.7 | 108.8 | 115.7 | 126.5 | 138.6 | 137.7 | 146.3 | 77.3 | 74.9 | 79.0 | 79.1 |

Table 2(f): Arrivals by Air from U.K. (Scheduled Flights), 2003 - 2006

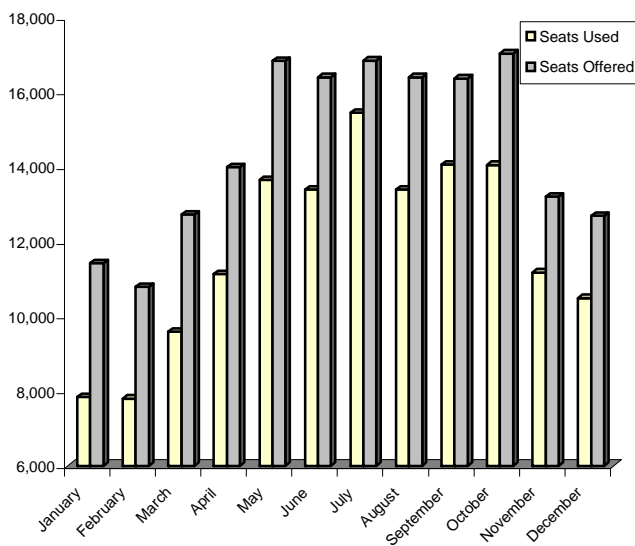
| <u>MONTH</u> | <u>(000's)</u> | | | | <u>(000's)</u> | | | | <u>% (i)</u> | | | |
|--------------|-------------------|--------------|--------------|--------------|----------------------|--------------|--------------|--------------|--------------------|-------------|-------------|-------------|
| | <u>SEATS USED</u> | | | | <u>SEATS OFFERED</u> | | | | <u>LOAD FACTOR</u> | | | |
| | <u>2003</u> | <u>2004</u> | <u>2005</u> | <u>2006</u> | <u>2003</u> | <u>2004</u> | <u>2005</u> | <u>2006</u> | <u>2003</u> | <u>2004</u> | <u>2005</u> | <u>2006</u> |
| JANUARY | 6.5 | 7.5 | 10.0 | 9.7 | 11.4 | 12.4 | 15.9 | 15.5 | 57.4 | 60.0 | 62.7 | 62.7 |
| FEBRUARY | 7.9 | 9.2 | 10.5 | 10.7 | 9.3 | 11.9 | 14.4 | 14.8 | 84.8 | 77.8 | 73.2 | 72.5 |
| MARCH | 10.3 | 12.4 | 13.4 | 14.6 | 13.2 | 15.4 | 16.6 | 17.6 | 78.2 | 80.7 | 80.7 | 83.3 |
| APRIL | 11.0 | 12.9 | 13.9 | 15.2 | 13.2 | 16.7 | 17.6 | 17.8 | 82.9 | 77.0 | 78.9 | 85.2 |
| MAY | 13.0 | 14.0 | 16.0 | 17.1 | 16.1 | 20.2 | 21.1 | 19.3 | 80.9 | 69.3 | 75.8 | 88.6 |
| JUNE | 12.2 | 14.3 | 16.2 | 16.8 | 15.6 | 19.5 | 20.4 | 19.8 | 78.6 | 73.4 | 79.7 | 84.9 |
| JULY | 14.6 | 17.5 | 18.4 | 17.9 | 16.1 | 20.1 | 21.1 | 19.6 | 90.6 | 87.2 | 87.4 | 91.2 |
| AUGUST | 13.2 | 16.2 | 18.2 | 14.4 | 16.1 | 20.2 | 21.2 | 17.4 | 81.8 | 80.4 | 85.8 | 82.9 |
| SEPTEMBER | 12.0 | 15.5 | 17.0 | 13.9 | 15.5 | 19.6 | 20.5 | 17.6 | 77.2 | 79.0 | 83.3 | 79.0 |
| OCTOBER | 12.3 | 14.3 | 16.4 | 13.8 | 15.9 | 20.3 | 20.9 | 17.4 | 77.5 | 70.6 | 78.4 | 79.5 |
| NOVEMBER | 10.2 | 11.7 | 11.5 | 9.8 | 14.1 | 15.2 | 16.7 | 11.7 | 71.9 | 76.8 | 69.0 | 83.7 |
| DECEMBER | 9.8 | 11.6 | 11.1 | 10.7 | 13.8 | 15.0 | 15.3 | 13.6 | 71.3 | 77.0 | 72.7 | 78.8 |
| TOTAL | 133.0 | 157.0 | 172.7 | 164.6 | 170.3 | 206.4 | 221.6 | 202.0 | 78.1 | 76.1 | 77.9 | 81.5 |

Note: (i) All load factors are calculated on the basis of actual figures. The total yearly figure has been rounded off from the actual figure and need not necessarily equal the sum of the rounded off monthly figures.

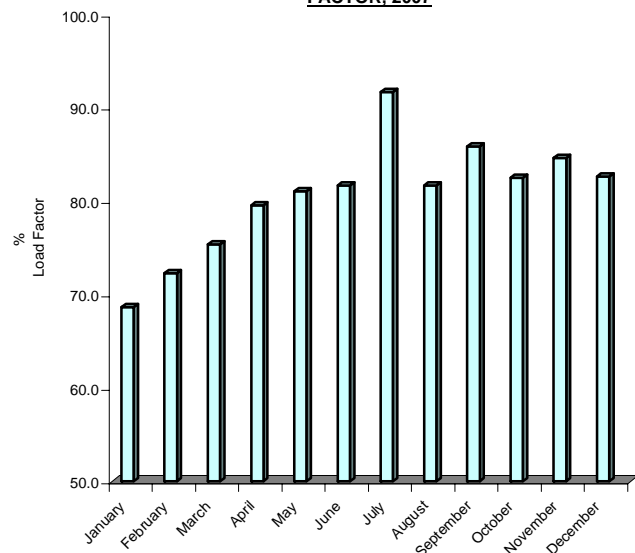
Table 2(g): Arrivals by Air from U.K. (Scheduled Flights), 2007

| <u>MONTH</u> | <u>(000's)</u> | | <u>% (i)</u> |
|--------------|-------------------|----------------------|--------------------|
| | <u>SEATS USED</u> | <u>SEATS OFFERED</u> | <u>LOAD FACTOR</u> |
| January | 7.8 | 11.4 | 68.7 |
| February | 7.8 | 10.8 | 72.3 |
| March | 9.6 | 12.7 | 75.4 |
| April | 11.1 | 14.0 | 79.6 |
| May | 13.7 | 16.8 | 81.1 |
| June | 13.4 | 16.4 | 81.7 |
| July | 15.5 | 16.9 | 91.7 |
| August | 13.4 | 16.4 | 81.7 |
| September | 14.1 | 16.4 | 85.9 |
| October | 14.1 | 17.0 | 82.5 |
| November | 11.2 | 13.2 | 84.7 |
| December | 10.5 | 12.7 | 82.6 |
| TOTAL | 142.1 | 174.8 | 81.3 |

ARRIVALS BY AIR (SCHEDULED FLIGHTS), 2007



ARRIVALS BY AIR (SCHEDULED FLIGHTS), LOAD FACTOR, 2007

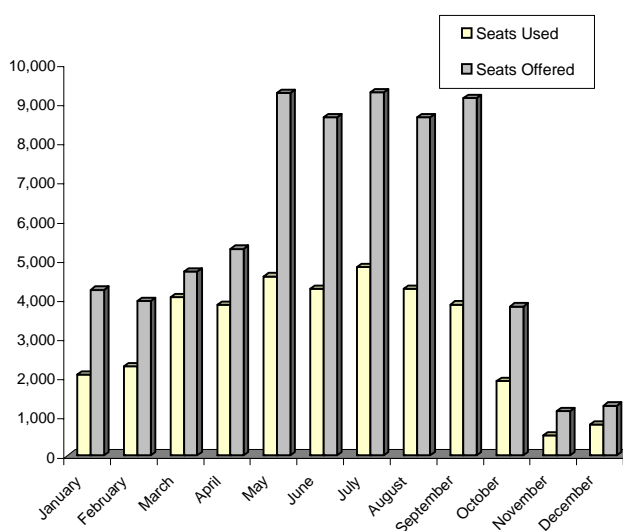


Note: (i) Load factors are calculated on the basis of actual figures and exclude visitors in transit when applicable. The total yearly figures have been rounded off from the actual figures and need not necessarily equal the sum of the rounded off monthly figures.

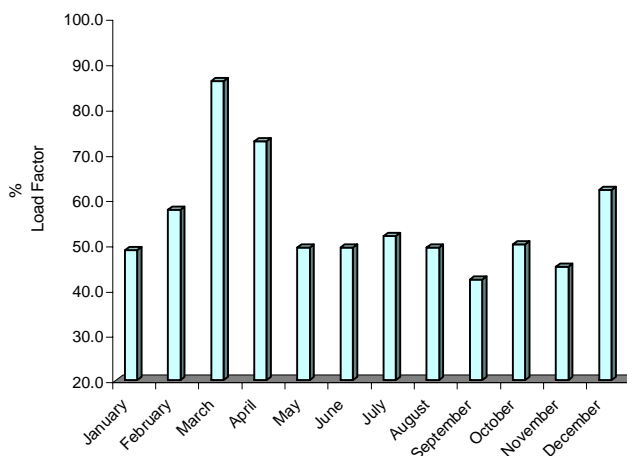
Table 2(h): Arrivals by Air from Spain (Scheduled Flights), 2007

| <u>MONTH</u> | <u>(000's)</u> | | <u>% (i)</u> |
|--------------|-------------------|----------------------|--------------------|
| | <u>SEATS USED</u> | <u>SEATS OFFERED</u> | <u>LOAD FACTOR</u> |
| January | 2.1 | 4.2 | 48.8 |
| February | 2.3 | 3.9 | 57.6 |
| March | 4.0 | 4.7 | 86.2 |
| April | 3.8 | 5.3 | 72.8 |
| May | 4.6 | 9.3 | 49.4 |
| June | 4.3 | 8.6 | 49.3 |
| July | 4.8 | 9.3 | 51.9 |
| August | 4.3 | 8.6 | 49.3 |
| September | 3.9 | 9.1 | 42.3 |
| October | 1.9 | 3.8 | 50.0 |
| November | 0.5 | 1.1 | 45.0 |
| December | 0.8 | 1.3 | 62.1 |
| TOTAL | 37.2 | 69.3 | 53.7 |

ARRIVALS BY AIR FROM SPAIN (SCHEDULED FLIGHTS), 2007



ARRIVALS BY AIR FROM SPAIN (SCHEDULED FLIGHTS), LOAD FACTOR, 2007



Note: (i) Load factors are calculated on the basis of actual figures and exclude visitors in transit when applicable. The total yearly figures have been rounded off from the actual figures and need not necessarily equal the sum of the rounded off monthly figures.

Table 3(a): Departures by Air to U.K. (Scheduled Flights), 1983 - 1985

| <u>MONTH</u> | <u>(000's)</u> | | | <u>(000's)</u> | | | <u>%</u> | | | | | |
|--------------|-------------------|-------------|-------------|----------------------|-------------|-------------|--------------------|---------------|-------------|---------------|-------------|---------------|
| | <u>SEATS USED</u> | | | <u>SEATS OFFERED</u> | | | <u>LOAD FACTOR</u> | | | | | |
| | <u>1983</u> | <u>1984</u> | <u>1985</u> | <u>1983</u> | <u>1984</u> | <u>1985</u> | <u>1983</u> | | <u>1984</u> | | <u>1985</u> | |
| | | | | | | | (i) | (ii) | (i) | (ii) | (i) | (ii) |
| JANUARY | 1.7 | 2.1 | 2.3 | 2.9 | 2.6 | 2.6 | 61.2 | (58.8) | 80.5 | (77.6) | 89.3 | (87.0) |
| FEBRUARY | 1.5 | 1.5 | 1.9 | 2.6 | 2.1 | 2.2 | 56.6 | (53.7) | 72.6 | (69.7) | 85.9 | (82.8) |
| MARCH | 2.0 | 2.0 | 2.8 | 3.0 | 2.4 | 3.2 | 67.2 | (61.7) | 85.2 | (81.3) | 89.9 | (86.4) |
| APRIL | 2.6 | 2.5 | 4.0 | 3.9 | 3.1 | 4.6 | 65.8 | (63.4) | 80.3 | (77.6) | 89.0 | (87.3) |
| MAY | 2.0 | 2.0 | 3.6 | 4.0 | 3.2 | 4.4 | 48.6 | (47.0) | 64.0 | (61.7) | 81.7 | (79.9) |
| JUNE | 2.6 | 2.4 | 4.3 | 3.9 | 3.2 | 5.0 | 65.5 | (64.2) | 74.3 | (72.2) | 85.5 | (84.4) |
| JULY | 2.4 | 2.3 | 4.3 | 4.0 | 3.3 | 5.6 | 60.8 | (59.2) | 69.6 | (68.0) | 76.3 | (75.5) |
| AUGUST | 3.3 | 3.1 | 6.2 | 4.0 | 3.3 | 6.5 | 81.4 | (79.5) | 94.1 | (92.2) | 94.3 | (93.4) |
| SEPTEMBER | 3.1 | 3.0 | 5.6 | 3.9 | 3.3 | 5.9 | 78.3 | (75.3) | 92.5 | (89.5) | 94.1 | (92.4) |
| OCTOBER | 2.5 | 2.6 | 5.2 | 3.6 | 3.2 | 5.9 | 69.9 | (66.6) | 80.5 | (76.2) | 89.2 | (86.8) |
| NOVEMBER | 1.6 | 2.1 | 5.4 | 2.2 | 2.4 | 6.3 | 74.2 | (71.1) | 87.9 | (83.0) | 85.6 | (82.7) |
| DECEMBER | 1.5 | 2.0 | 4.4 | 2.4 | 2.5 | 7.5 | 63.3 | (61.4) | 78.9 | (77.4) | 58.9 | (58.0) |
| TOTAL | 26.8 | 27.6 | 50.0 | 40.4 | 34.6 | 59.7 | 66.2 | (63.7) | 80.0 | (77.2) | 83.9 | (82.1) |

Table 3(b): Departures by Air to U.K. (Scheduled Flights), 1986 - 1988

| <u>MONTH</u> | <u>(000's)</u> | | | <u>(000's)</u> | | | <u>%</u> | | | | | |
|--------------|-------------------|--------------|--------------|----------------------|--------------|--------------|--------------------|---------------|-------------|---------------|-------------|---------------|
| | <u>SEATS USED</u> | | | <u>SEATS OFFERED</u> | | | <u>LOAD FACTOR</u> | | | | | |
| | <u>1986</u> | <u>1987</u> | <u>1988</u> | <u>1986</u> | <u>1987</u> | <u>1988</u> | <u>1986</u> | | <u>1987</u> | | <u>1988</u> | |
| | | | | | | | (i) | (ii) | (i) | (ii) | (i) | (ii) |
| JANUARY | 5.2 | 6.4 | 9.0 | 6.9 | 7.9 | 12.7 | 75.8 | (74.2) | 80.6 | (79.4) | 70.6 | (69.7) |
| FEBRUARY | 4.1 | 4.7 | 8.2 | 5.9 | 6.6 | 11.2 | 70.0 | (66.1) | 70.8 | (68.0) | 73.1 | (72.0) |
| MARCH | 6.0 | 7.0 | 9.4 | 7.1 | 8.6 | 12.9 | 84.1 | (82.8) | 81.8 | (78.1) | 73.0 | (71.5) |
| APRIL | 6.8 | 7.5 | 12.2 | 7.3 | 8.3 | 14.4 | 92.0 | (90.5) | 90.2 | (89.1) | 85.0 | (83.6) |
| MAY | 6.3 | 8.7 | 11.6 | 8.6 | 11.2 | 16.8 | 73.9 | (72.4) | 77.8 | (76.1) | 68.9 | (67.8) |
| JUNE | 7.5 | 8.7 | 14.1 | 8.6 | 11.9 | 16.6 | 87.1 | (85.9) | 72.9 | (71.4) | 85.1 | (83.8) |
| JULY | 6.9 | 8.7 | 13.3 | 9.0 | 12.1 | 17.5 | 76.6 | (75.4) | 71.9 | (70.6) | 76.0 | (75.3) |
| AUGUST | 9.2 | 11.6 | 15.9 | 9.8 | 12.5 | 18.1 | 93.4 | (92.7) | 92.5 | (91.7) | 87.9 | (87.3) |
| SEPTEMBER | 8.6 | 10.6 | 15.4 | 9.0 | 11.7 | 17.8 | 95.7 | (94.1) | 90.3 | (89.2) | 86.2 | (85.2) |
| OCTOBER | 8.5 | 10.5 | 15.5 | 9.1 | 12.5 | 18.2 | 93.0 | (91.1) | 84.1 | (82.5) | 85.5 | (84.4) |
| NOVEMBER | 6.2 | 9.4 | 11.0 | 7.4 | 12.9 | 14.9 | 83.8 | (81.2) | 72.3 | (71.1) | 74.3 | (72.4) |
| DECEMBER | 4.9 | 6.9 | 8.7 | 8.2 | 13.0 | 16.1 | 59.7 | (58.5) | 55.6 | (53.6) | 53.8 | (53.1) |
| TOTAL | 80.1 | 100.7 | 144.3 | 96.9 | 129.2 | 187.2 | 82.7 | (81.1) | 77.8 | (77.7) | 77.1 | (76.1) |

Notes: (i) All load factors are calculated on the basis of actual figures. The total yearly figure has been rounded off from the actual figure and need not necessarily equal the sum of the rounded off monthly figures.

(ii) Revenue load factors exclude non-paying passengers and are also calculated on actual figures.

Table 3(c): Departures by Air to U.K. (Scheduled Flights), 1989 - 1991

| <u>MONTH</u> | <u>(000's)</u> | | | <u>(000's)</u> | | | <u>%</u> | | | | | |
|--------------|-------------------|--------------|-------------|----------------------|--------------|--------------|--------------------|---------------|-------------|---------------|-------------|---------------|
| | <u>SEATS USED</u> | | | <u>SEATS OFFERED</u> | | | <u>LOAD FACTOR</u> | | | | | |
| | <u>1989</u> | <u>1990</u> | <u>1991</u> | <u>1989</u> | <u>1990</u> | <u>1991</u> | <u>1989</u> | | <u>1990</u> | | <u>1991</u> | |
| | | | | | | | (i) | (ii) | (i) | (ii) | (i) | (ii) |
| JANUARY | 12.2 | 11.4 | 7.5 | 18.0 | 15.4 | 12.1 | 67.7 | (66.4) | 74.3 | (73.0) | 62.1 | (60.6) |
| FEBRUARY | 10.2 | 10.5 | 6.7 | 14.4 | 13.3 | 10.3 | 70.9 | (69.3) | 79.1 | (77.2) | 65.4 | (63.2) |
| MARCH | 11.9 | 12.3 | 6.2 | 17.8 | 14.4 | 8.7 | 67.1 | (65.0) | 85.0 | (83.2) | 71.3 | (69.1) |
| APRIL | 13.6 | 13.0 | 7.8 | 17.5 | 14.6 | 8.6 | 77.3 | (76.3) | 89.2 | (87.9) | 90.2 | (87.6) |
| MAY | 13.3 | 11.7 | 6.9 | 18.7 | 14.2 | 8.2 | 70.7 | (69.4) | 82.2 | (80.6) | 83.6 | (81.0) |
| JUNE | 15.9 | 13.2 | 7.9 | 19.5 | 14.1 | 9.8 | 81.6 | (80.5) | 93.3 | (92.0) | 80.5 | (77.9) |
| JULY | 17.1 | 12.5 | 9.2 | 24.5 | 14.6 | 12.4 | 70.0 | (69.0) | 86.0 | (84.7) | 73.8 | (71.2) |
| AUGUST | 20.9 | 13.7 | 11.0 | 24.5 | 15.2 | 12.3 | 85.1 | (84.4) | 90.5 | (89.8) | 89.5 | (87.0) |
| SEPTEMBER | 18.4 | 13.4 | 9.9 | 22.0 | 14.3 | 12.2 | 83.5 | (82.5) | 93.2 | (91.7) | 81.7 | (78.7) |
| OCTOBER | 18.3 | 13.8 | 10.1 | 22.5 | 14.7 | 12.1 | 81.5 | (80.1) | 93.5 | (92.2) | 83.3 | (81.5) |
| NOVEMBER | 11.9 | 9.6 | 7.3 | 15.5 | 12.0 | 10.9 | 77.2 | (75.3) | 80.5 | (77.5) | 67.0 | (65.4) |
| DECEMBER | 10.2 | 8.7 | 6.1 | 15.0 | 12.1 | 10.2 | 68.2 | (67.1) | 71.8 | (70.2) | 59.7 | (58.5) |
| TOTAL | 174.0 | 143.8 | 96.6 | 230.0 | 168.9 | 127.8 | 75.7 | (70.5) | 85.1 | (83.6) | 75.6 | (73.3) |

Table 3(d): Departures by Air to U.K. (Scheduled Flights), 1992 - 1994

| <u>MONTH</u> | <u>(000's)</u> | | | <u>(000's)</u> | | | <u>%</u> | | | | | |
|--------------|-------------------|-------------|-------------|----------------------|--------------|--------------|--------------------|---------------|-------------|---------------|-------------|---------------|
| | <u>SEATS USED</u> | | | <u>SEATS OFFERED</u> | | | <u>LOAD FACTOR</u> | | | | | |
| | <u>1992</u> | <u>1993</u> | <u>1994</u> | <u>1992</u> | <u>1993</u> | <u>1994</u> | <u>1992</u> | | <u>1993</u> | | <u>1994</u> | |
| | | | | | | | (i) | (ii) | (i) | (ii) | (i) | (ii) |
| JANUARY | 6.7 | 6.1 | 5.8 | 10.2 | 7.6 | 7.1 | 65.9 | (64.8) | 80.5 | (79.3) | 81.9 | (80.8) |
| FEBRUARY | 6.2 | 5.4 | 5.0 | 8.6 | 6.4 | 6.2 | 72.5 | (70.2) | 83.8 | (82.9) | 81.7 | (80.1) |
| MARCH | 7.0 | 6.7 | 5.5 | 9.2 | 7.8 | 7.5 | 76.0 | (73.8) | 86.1 | (84.7) | 74.1 | (72.9) |
| APRIL | 9.5 | 8.3 | 7.6 | 12.8 | 10.0 | 9.3 | 74.3 | (73.2) | 82.3 | (81.0) | 81.9 | (81.2) |
| MAY | 8.6 | 7.9 | 7.6 | 12.6 | 11.1 | 10.1 | 68.1 | (66.8) | 71.3 | (69.8) | 76.3 | (75.2) |
| JUNE | 9.8 | 9.4 | 8.7 | 12.2 | 11.1 | 10.4 | 80.4 | (79.1) | 84.1 | (82.9) | 84.8 | (83.7) |
| JULY | 9.8 | 8.7 | 8.4 | 12.5 | 11.3 | 10.9 | 78.5 | (76.7) | 77.5 | (76.7) | 77.0 | (77.5) |
| AUGUST | 11.5 | 10.0 | 9.7 | 12.8 | 10.9 | 10.9 | 89.7 | (88.8) | 91.4 | (90.5) | 89.0 | (88.3) |
| SEPTEMBER | 7.6 | 9.7 | 9.3 | 8.2 | 10.5 | 10.2 | 91.9 | (90.2) | 92.2 | (91.0) | 91.8 | (91.2) |
| OCTOBER | 10.5 | 9.5 | 8.9 | 11.9 | 11.1 | 10.2 | 87.7 | (85.9) | 86.0 | (85.0) | 88.3 | (87.5) |
| NOVEMBER | 7.8 | 6.5 | 5.6 | 9.0 | 7.3 | 6.8 | 86.0 | (84.2) | 88.8 | (87.3) | 83.3 | (82.4) |
| DECEMBER | 5.6 | 5.1 | 4.8 | 7.6 | 6.9 | 7.2 | 73.8 | (72.5) | 73.2 | (72.4) | 67.3 | (66.9) |
| TOTAL | 100.5 | 93.3 | 86.9 | 127.7 | 112.2 | 107.1 | 78.7 | (77.2) | 83.2 | (82.0) | 81.2 | (80.3) |

Notes: (i) All load factors are calculated on the basis of actual figures. The total yearly figure has been rounded off from the actual figure and need not necessarily equal the sum of the rounded off monthly figures.

(ii) Revenue load factors exclude non-paying passengers and are also calculated on actual figures.

Table 3(e): Departures by Air to U.K. (Scheduled Flights), 1995 - 1997

| <u>MONTH</u> | <u>(000's)</u> | | | <u>(000's)</u> | | | <u>%</u> | | | | | |
|--------------|-------------------|-------------|-------------|----------------------|-------------|--------------|--------------------|---------------|-------------|---------------|-------------|---------------|
| | <u>SEATS USED</u> | | | <u>SEATS OFFERED</u> | | | <u>LOAD FACTOR</u> | | | | | |
| | <u>1995</u> | <u>1996</u> | <u>1997</u> | <u>1995</u> | <u>1996</u> | <u>1997</u> | <u>1995</u> | | <u>1996</u> | | <u>1997</u> | |
| | | | | | | | (i) | (ii) | (i) | (ii) | (i) | (ii) |
| JANUARY | 5.5 | 5.3 | 4.7 | 7.8 | 7.7 | 6.8 | 70.8 | (70.3) | 69.4 | (69.0) | 68.5 | (67.4) |
| FEBRUARY | 5.2 | 5.6 | 5.1 | 6.9 | 8.2 | 6.4 | 75.1 | (74.4) | 68.1 | (67.6) | 79.4 | (78.3) |
| MARCH | 6.6 | 6.3 | 5.2 | 7.7 | 8.1 | 6.8 | 85.1 | (84.6) | 77.1 | (76.4) | 76.4 | (75.5) |
| APRIL | 8.3 | 7.0 | 6.1 | 10.3 | 8.7 | 6.7 | 80.5 | (80.3) | 81.0 | (80.7) | 90.1 | (89.7) |
| MAY | 7.3 | 7.0 | 7.7 | 10.4 | 8.7 | 9.6 | 69.8 | (69.4) | 79.9 | (79.5) | 79.8 | (79.2) |
| JUNE | 8.2 | 8.1 | 7.9 | 9.9 | 9.1 | 9.5 | 82.5 | (82.0) | 89.5 | (89.1) | 83.2 | (83.0) |
| JULY | 7.9 | 6.8 | 7.5 | 10.3 | 8.6 | 9.7 | 76.5 | (76.0) | 79.1 | (79.0) | 77.0 | (76.7) |
| AUGUST | 8.5 | 6.8 | 8.7 | 10.3 | 7.6 | 9.5 | 82.8 | (82.4) | 89.7 | (89.5) | 91.7 | (91.4) |
| SEPTEMBER | 8.4 | 8.0 | 8.8 | 9.6 | 8.5 | 10.5 | 87.6 | (87.0) | 93.5 | (93.2) | 83.8 | (83.5) |
| OCTOBER | 8.3 | 7.3 | 8.6 | 9.9 | 8.3 | 9.6 | 83.0 | (82.4) | 88.6 | (88.2) | 90.0 | (89.6) |
| NOVEMBER | 6.3 | 5.9 | 6.5 | 8.5 | 7.6 | 9.2 | 73.8 | (73.1) | 77.7 | (77.1) | 70.3 | (70.0) |
| DECEMBER | 4.8 | 4.1 | 4.7 | 7.9 | 7.0 | 10.1 | 61.5 | (60.8) | 58.8 | (58.4) | 46.3 | (46.1) |
| TOTAL | 85.3 | 78.2 | 81.5 | 109.5 | 98.1 | 104.4 | 77.8 | (77.3) | 79.6 | (79.0) | 78.1 | (77.6) |

Table 3(f): Departures by Air to U.K. (Scheduled Flights), 1998 - 2000

| <u>MONTH</u> | <u>(000's)</u> | | | <u>(000's)</u> | | | <u>%</u> | | | | | |
|--------------|-------------------|-------------|--------------|----------------------|--------------|--------------|--------------------|---------------|-------------|---------------|-------------|---------------|
| | <u>SEATS USED</u> | | | <u>SEATS OFFERED</u> | | | <u>LOAD FACTOR</u> | | | | | |
| | <u>1998</u> | <u>1999</u> | <u>2000</u> | <u>1998</u> | <u>1999</u> | <u>2000</u> | <u>1998</u> | | <u>1999</u> | | <u>2000</u> | |
| | | | | | | | (i) | (ii) | (i) | (ii) | (i) | (ii) |
| JANUARY | 6.0 | 6.3 | 6.5 | 9.5 | 8.5 | 11.1 | 63.1 | (62.7) | 74.1 | (73.9) | 58.8 | (58.7) |
| FEBRUARY | 5.3 | 5.7 | 6.0 | 8.7 | 7.5 | 9.8 | 60.7 | (60.2) | 75.1 | (74.3) | 61.5 | (61.4) |
| MARCH | 6.7 | 7.0 | 8.0 | 9.9 | 8.5 | 10.6 | 67.9 | (67.9) | 82.8 | (82.7) | 75.2 | (74.9) |
| APRIL | 8.2 | 8.7 | 9.1 | 10.0 | 9.8 | 10.1 | 81.9 | (81.7) | 89.0 | (88.5) | 89.4 | (89.3) |
| MAY | 8.0 | 8.9 | 9.9 | 11.2 | 12.5 | 13.3 | 71.3 | (70.9) | 71.0 | (71.0) | 74.5 | (74.5) |
| JUNE | 8.1 | 10.0 | 10.5 | 10.8 | 11.6 | 12.4 | 74.6 | (74.2) | 86.3 | (86.3) | 84.9 | (84.8) |
| JULY | 7.7 | 9.4 | 9.8 | 10.3 | 12.5 | 13.4 | 74.5 | (74.3) | 75.7 | (75.7) | 73.0 | (72.9) |
| AUGUST | 9.9 | 9.6 | 10.6 | 11.1 | 11.4 | 12.7 | 89.5 | (89.4) | 84.7 | (84.7) | 83.6 | (83.5) |
| SEPTEMBER | 9.2 | 10.2 | 11.7 | 10.4 | 11.8 | 12.8 | 88.5 | (88.4) | 86.3 | (86.3) | 91.4 | (91.2) |
| OCTOBER | 8.9 | 9.0 | 11.1 | 11.0 | 11.8 | 13.2 | 80.5 | (80.3) | 76.4 | (76.4) | 84.2 | (84.1) |
| NOVEMBER | 7.1 | 7.4 | 7.5 | 8.3 | 10.0 | 9.2 | 84.9 | (84.4) | 74.4 | (74.4) | 82.1 | (82.0) |
| DECEMBER | 5.0 | 5.1 | 5.7 | 7.6 | 10.6 | 9.3 | 66.2 | (65.5) | 48.0 | (47.9) | 61.3 | (60.8) |
| TOTAL | 90.1 | 97.4 | 106.6 | 119.0 | 126.5 | 138.1 | 75.7 | (75.4) | 77.0 | (76.9) | 77.2 | (77.1) |

Notes: (i) All load factors are calculated on the basis of actual figures. The total yearly figure has been rounded off from the actual figure and need not necessarily equal the sum of the rounded off monthly figures.

(ii) Revenue load factors exclude non-paying passengers and are also calculated on actual figures.

Table 3(g): Departures by Air to U.K. (Scheduled Flights), 2001 - 2003

| <u>MONTH</u> | <u>(000's)</u> | | | <u>(000's)</u> | | | <u>%</u> | | | | | |
|--------------|-------------------|--------------|--------------|----------------------|--------------|--------------|--------------------|---------------|-------------|---------------|-------------|---------------|
| | <u>SEATS USED</u> | | | <u>SEATS OFFERED</u> | | | <u>LOAD FACTOR</u> | | | | | |
| | <u>2001</u> | <u>2002</u> | <u>2003</u> | <u>2001</u> | <u>2002</u> | <u>2003</u> | <u>2001</u> | | <u>2002</u> | | <u>2003</u> | |
| | | | | | | | (i) | (ii) | (i) | (ii) | (i) | (ii) |
| JANUARY | 6.6 | 6.4 | 7.5 | 9.4 | 9.5 | 11.4 | 70.2 | (70.2) | 67.7 | (67.7) | 66.2 | (66.2) |
| FEBRUARY | 6.6 | 7.0 | 7.3 | 8.4 | 8.9 | 9.3 | 78.9 | (78.9) | 78.4 | (78.4) | 77.8 | (77.8) |
| MARCH | 7.9 | 8.4 | 10.1 | 9.8 | 11.1 | 13.2 | 81.0 | (81.0) | 75.7 | (75.7) | 76.6 | (76.6) |
| APRIL | 9.4 | 9.3 | 10.5 | 10.6 | 10.7 | 12.9 | 87.9 | (87.9) | 86.5 | (86.5) | 81.1 | (81.1) |
| MAY | 10.2 | 9.4 | 12.0 | 13.3 | 14.1 | 16.1 | 76.7 | (76.7) | 66.5 | (66.5) | 74.7 | (74.6) |
| JUNE | 11.0 | 10.5 | 12.8 | 12.9 | 13.3 | 15.4 | 85.7 | (85.7) | 79.1 | (79.1) | 83.3 | (83.3) |
| JULY | 10.3 | 10.8 | 12.0 | 13.5 | 14.8 | 16.1 | 76.0 | (76.0) | 72.9 | (72.9) | 74.7 | (74.6) |
| AUGUST | 11.5 | 13.1 | 14.6 | 13.4 | 14.5 | 16.1 | 85.4 | (85.4) | 90.5 | (90.5) | 91.0 | (91.0) |
| SEPTEMBER | 11.1 | 12.6 | 13.7 | 12.8 | 13.6 | 15.5 | 86.6 | (86.6) | 92.7 | (92.7) | 88.1 | (88.1) |
| OCTOBER | 11.3 | 11.7 | 12.9 | 13.5 | 14.4 | 15.9 | 83.9 | (83.9) | 81.3 | (81.3) | 81.0 | (80.9) |
| NOVEMBER | 8.5 | 8.6 | 10.9 | 10.7 | 10.7 | 14.1 | 79.9 | (79.9) | 80.6 | (80.6) | 77.4 | (77.4) |
| DECEMBER | 6.0 | 6.2 | 8.5 | 9.5 | 10.5 | 13.8 | 63.2 | (63.2) | 58.8 | (58.8) | 61.6 | (61.6) |
| TOTAL | 110.5 | 114.0 | 132.9 | 137.9 | 146.1 | 169.8 | 80.1 | (80.1) | 78.0 | (78.0) | 78.2 | (78.2) |

Table 3(h): Departures by Air to U.K. (Scheduled Flights), 2004 - 2006

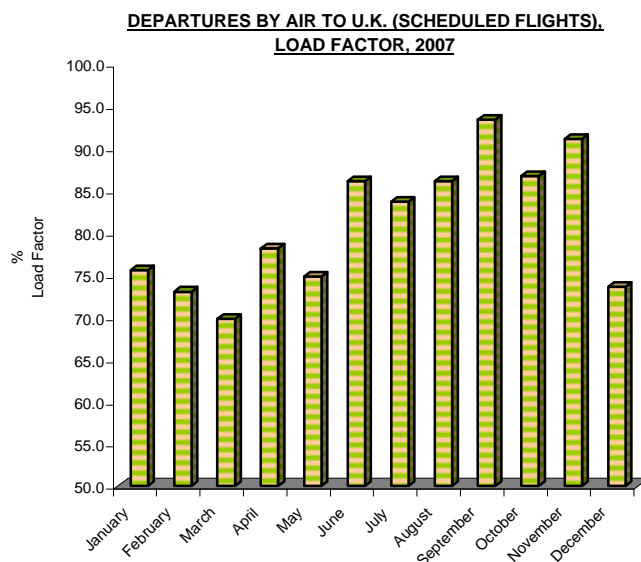
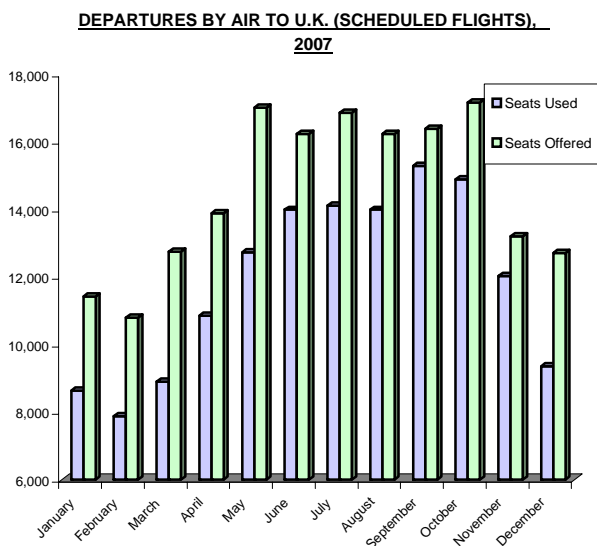
| <u>MONTH</u> | <u>(000's)</u> | | | <u>(000's)</u> | | | <u>%</u> | | | | | |
|--------------|-------------------|--------------|--------------|----------------------|--------------|--------------|--------------------|---------------|-------------|---------------|-------------|---------------|
| | <u>SEATS USED</u> | | | <u>SEATS OFFERED</u> | | | <u>LOAD FACTOR</u> | | | | | |
| | <u>2004</u> | <u>2005</u> | <u>2006</u> | <u>2004</u> | <u>2005</u> | <u>2006</u> | <u>2004</u> | | <u>2005</u> | | <u>2006</u> | |
| | | | | | | | (i) | (ii) | (i) | (ii) | (i) | (ii) |
| JANUARY | 8.7 | 11.9 | 10.5 | 12.4 | 15.8 | 15.7 | 70.0 | (69.9) | 75.4 | (75.4) | 66.6 | (66.6) |
| FEBRUARY | 9.1 | 10.2 | 10.6 | 11.9 | 14.4 | 14.8 | 76.2 | (76.2) | 70.8 | (70.8) | 72.1 | (72.1) |
| MARCH | 11.6 | 11.8 | 13.2 | 15.4 | 16.6 | 17.6 | 75.3 | (75.3) | 71.1 | (71.1) | 75.5 | (75.5) |
| APRIL | 13.0 | 14.4 | 15.5 | 16.7 | 17.6 | 17.8 | 77.7 | (77.7) | 81.9 | (81.9) | 87.0 | (87.0) |
| MAY | 12.3 | 14.4 | 15.8 | 20.2 | 21.1 | 19.3 | 61.0 | (61.0) | 68.8 | (68.8) | 82.1 | (82.1) |
| JUNE | 15.1 | 17.2 | 17.7 | 19.5 | 20.5 | 19.8 | 77.6 | (77.6) | 83.7 | (83.7) | 89.3 | (89.3) |
| JULY | 14.9 | 16.3 | 16.3 | 20.0 | 21.1 | 19.6 | 74.2 | (74.2) | 77.5 | (77.5) | 83.1 | (83.1) |
| AUGUST | 17.9 | 18.8 | 15.9 | 20.2 | 21.2 | 17.6 | 88.5 | (88.5) | 88.7 | (88.7) | 90.4 | (90.4) |
| SEPTEMBER | 17.1 | 19.0 | 15.4 | 19.6 | 20.4 | 17.2 | 87.2 | (87.2) | 92.8 | (92.8) | 89.5 | (89.5) |
| OCTOBER | 15.4 | 17.5 | 14.5 | 20.3 | 20.9 | 17.4 | 75.8 | (75.8) | 83.8 | (83.8) | 83.7 | (83.7) |
| NOVEMBER | 12.6 | 12.6 | 10.5 | 15.2 | 16.6 | 11.6 | 83.1 | (83.1) | 75.8 | (75.8) | 90.0 | (90.0) |
| DECEMBER | 9.8 | 9.6 | 9.5 | 15.0 | 15.1 | 13.6 | 64.9 | (64.9) | 63.3 | (63.3) | 70.0 | (70.0) |
| TOTAL | 157.3 | 173.7 | 165.4 | 206.4 | 221.4 | 201.9 | 76.2 | (76.2) | 78.5 | (78.5) | 81.9 | (81.9) |

Notes: (i) All load factors are calculated on the basis of actual figures. The total yearly figure has been rounded off from the actual figure and need not necessarily equal the sum of the rounded off monthly figures.

(ii) Revenue load factors exclude non-paying passengers and are also calculated on actual figures.

Table 3(i): Departures by Air to U.K. (Scheduled Flights), 2007

| MONTH | SEATS USED (000's) | SEATS OFFERED | % | |
|--------------|-----------------------|---------------|-------------|---------------|
| | | | (i) | (ii) |
| January | 8.6 | 11.4 | 75.6 | (75.6) |
| February | 7.9 | 10.8 | 73.0 | (73.0) |
| March | 8.9 | 12.7 | 69.8 | (69.8) |
| April | 10.9 | 13.9 | 78.2 | (78.2) |
| May | 12.7 | 17.0 | 74.8 | (74.8) |
| June | 14.0 | 16.2 | 86.1 | (86.1) |
| July | 14.1 | 16.9 | 83.7 | (83.7) |
| August | 14.0 | 16.2 | 86.1 | (86.1) |
| September | 15.3 | 16.4 | 93.4 | (93.4) |
| October | 14.9 | 17.2 | 86.7 | (86.7) |
| November | 12.0 | 13.2 | 91.1 | (91.1) |
| December | 9.4 | 12.7 | 73.6 | (73.6) |
| TOTAL | 142.7 | 174.7 | 81.7 | (81.7) |



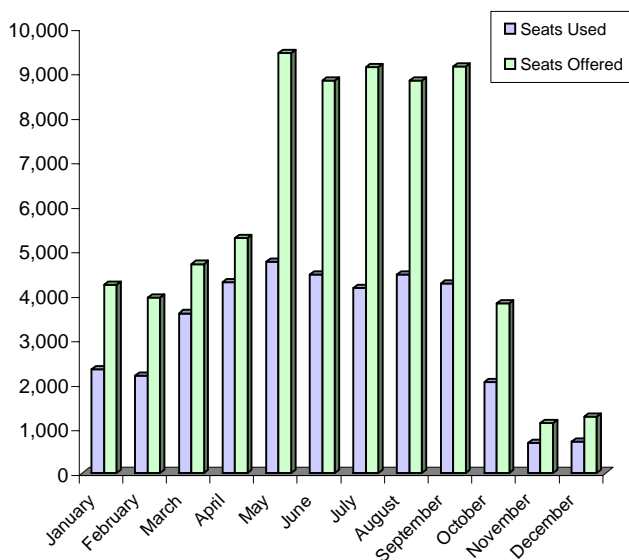
Notes: (i) Load factors are calculated on the basis of actual figures and exclude visitors in transit when applicable. The total yearly figures have been rounded off from the actual figures and need not necessarily equal the sum of the rounded off monthly figures.

(ii) Revenue load factorrrs exclude non-paying passengers and are also calculated on actual figures.

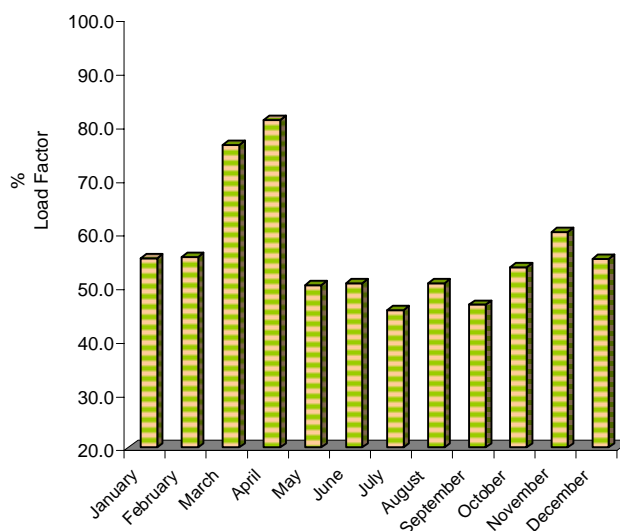
Table 3(j): Departures by Air to Spain (Scheduled Flights), 2007

| MONTH | SEATS USED (000's) | SEATS OFFERED (000's) | LOAD FACTOR (%) | |
|--------------|-----------------------|--------------------------|-----------------|---------------|
| | | | (i) | (ii) |
| January | 2.3 | 4.2 | 55.2 | (55.2) |
| February | 2.2 | 3.9 | 55.5 | (55.5) |
| March | 3.6 | 4.7 | 76.4 | (76.4) |
| April | 4.3 | 5.3 | 81.1 | (81.1) |
| May | 4.7 | 9.4 | 50.3 | (50.3) |
| June | 4.5 | 8.8 | 50.6 | (50.6) |
| July | 4.2 | 9.1 | 45.6 | (45.6) |
| August | 4.5 | 8.8 | 50.6 | (50.6) |
| September | 4.3 | 9.1 | 46.6 | (46.6) |
| October | 2.0 | 3.8 | 53.6 | (53.6) |
| November | 0.7 | 1.1 | 60.2 | (60.2) |
| December | 0.7 | 1.3 | 55.2 | (55.2) |
| TOTAL | 37.9 | 69.7 | 54.4 | (54.4) |

DEPARTURES BY AIR TO SPAIN (SCHEDULED FLIGHTS), 2007



DEPARTURES BY AIR TO SPAIN (SCHEDULED FLIGHTS), LOAD FACTOR, 2007



Notes: (i) Load factors are calculated on the basis of actual figures and exclude visitors in transit when applicable. The total yearly figures have been rounded off from the actual figures and need not necessarily equal the sum of the rounded off monthly figures.

(ii) Revenue load factors exclude non-paying passengers and are also calculated on actual figures.

Table 4(a): Arrivals by Air from U.K. (Charter Flights), 1986 - 1989

| MONTH | <u>(000's)</u> | | | | <u>(000's)</u> | | | | <u>%</u> | | | |
|--------------|-------------------|-------------|-------------|------------|----------------------|-------------|-------------|------------|--------------------|-------------|-------------|-------------|
| | <u>SEATS USED</u> | | | | <u>SEATS OFFERED</u> | | | | <u>LOAD FACTOR</u> | | | |
| | 1986 | 1987 | 1988 | 1989 | 1986 | 1987 | 1988 | 1989 | 1986 | 1987 | 1988 | 1989 |
| JANUARY | - | 2.3 | 1.6 | 1.2 | - | 2.5 | 1.7 | 1.7 | - | 92.2 | 93.4 | 72.4 |
| FEBRUARY | 0.1 | 1.5 | 1.5 | 1.4 | 0.1 | 1.6 | 1.6 | 1.8 | 90.8 | 97.1 | 97.5 | 77.9 |
| MARCH | - | 1.2 | 1.8 | 0.4 | - | 1.2 | 1.8 | 0.4 | - | 95.7 | 96.7 | 84.7 |
| APRIL | - | 1.6 | 1.2 | 0.8 | - | 1.6 | 1.4 | 1.3 | - | 97.6 | 80.5 | 61.4 |
| MAY | 0.8 | 0.1 | 0.6 | - | 1.0 | 0.2 | 0.7 | - | 83.8 | 61.9 | 90.2 | - |
| JUNE | 0.7 | 1.2 | 0.2 | - | 0.8 | 1.3 | 0.3 | - | 84.5 | 88.8 | 85.7 | - |
| JULY | 0.6 | 1.0 | 0.5 | - | 0.6 | 1.0 | 0.5 | - | 94.9 | 98.0 | 96.7 | - |
| AUGUST | 0.7 | 1.0 | 0.6 | - | 0.7 | 1.0 | 0.7 | - | 96.8 | 97.1 | 95.4 | - |
| SEPTEMBER | 0.6 | 1.3 | 0.5 | 0.2 | 0.6 | 1.3 | 0.6 | 0.2 | 95.4 | 98.4 | 74.3 | 77.9 |
| OCTOBER | 0.6 | 0.8 | 0.6 | - | 0.9 | 1.0 | 0.7 | 0.1 | 66.1 | 75.4 | 95.2 | - |
| NOVEMBER | - | 1.5 | 1.1 | 0.8 | - | 1.6 | 1.2 | 1.2 | - | 98.3 | 96.9 | 66.0 |
| DECEMBER | - | 1.6 | 1.5 | 0.8 | - | 1.7 | 1.7 | 1.0 | - | 96.0 | 86.5 | 80.9 |
| TOTAL | 4.1 | 15.1 | 11.6 | 5.6 | 4.8 | 16.1 | 12.7 | 7.8 | 84.1 | 94.4 | 90.7 | 71.7 |

Table 4(b): Arrivals by Air from U.K. (Charter Flights), 1990 - 1992 & 1998

| MONTH | <u>(000's)</u> | | | | <u>(000's)</u> | | | | <u>%</u> | | | |
|--------------|-------------------|------------|------------|------------|----------------------|-------------|------------|------------|--------------------|-------------|-------------|-------------|
| | <u>SEATS USED</u> | | | | <u>SEATS OFFERED</u> | | | | <u>LOAD FACTOR</u> | | | |
| | 1990 | 1991 | 1992 | 1998 | 1990 | 1991 | 1992 | 1998 | 1990 | 1991 | 1992 | 1998 |
| JANUARY | 0.8 | - | 0.1 | - | 1.0 | 0.2 | 0.1 | - | 79.5 | 5.8 | 96.9 | - |
| FEBRUARY | 1.0 | - | - | - | 1.0 | - | - | - | 91.7 | - | - | - |
| MARCH | 1.3 | 0.1 | - | - | 1.3 | 0.1 | - | - | 96.9 | 90.2 | - | - |
| APRIL | 0.8 | - | - | - | 1.3 | - | - | - | 58.1 | - | - | - |
| MAY | - | 1.5 | - | - | - | 1.9 | - | - | - | 79.3 | - | - |
| JUNE | - | 1.8 | - | - | - | 2.5 | - | - | - | 74.2 | - | - |
| JULY | 0.3 | 2.1 | 0.1 | - | 0.4 | 2.4 | 0.1 | - | 90.8 | 89.0 | 93.3 | - |
| AUGUST | 0.2 | 2.7 | - | - | 0.3 | 3.1 | - | - | 65.1 | 87.6 | - | - |
| SEPTEMBER | 0.2 | 1.8 | - | - | 0.5 | 2.3 | - | - | 42.0 | 81.2 | - | - |
| OCTOBER | - | 1.0 | - | - | - | 1.8 | - | 0.1 | - | 57.0 | - | 58.0 |
| NOVEMBER | 0.2 | - | - | 0.7 | 0.5 | 0.1 | - | 0.7 | 52.6 | 6.1 | - | 99.3 |
| DECEMBER | - | - | 0.1 | 0.3 | - | - | 0.1 | 0.4 | - | - | 100.0 | 79.4 |
| TOTAL | 4.7 | 9.1 | 0.4 | 1.1 | 6.2 | 12.1 | 0.4 | 1.2 | 75.9 | 75.2 | 96.9 | 90.1 |

Notes:(i) Figures exclude MoD charter flights. No charter operations were recorded during 1993 - 1997.

(ii) The total yearly figures have been rounded off from the actual figures and need not necessarily equal the sum of the rounded off monthly figures.

Table 4(c): Arrivals by Air from U.K. (Charter Flights), 1999 - 2002

| <u>MONTH</u> | <u>(000's)</u> | | | | <u>(000's)</u> | | | | <u>%</u> | | | |
|--------------|-------------------|-------------|-------------|-------------|----------------------|-------------|-------------|-------------|--------------------|-------------|-------------|--------------|
| | <u>SEATS USED</u> | | | | <u>SEATS OFFERED</u> | | | | <u>LOAD FACTOR</u> | | | |
| | <u>1999</u> | <u>2000</u> | <u>2001</u> | <u>2002</u> | <u>1999</u> | <u>2000</u> | <u>2001</u> | <u>2002</u> | <u>1999</u> | <u>2000</u> | <u>2001</u> | <u>2002</u> |
| JANUARY | - | 0.1 | - | - | 0.1 | 0.1 | - | - | 5.6 | 82.6 | 100.0 | 100.0 |
| FEBRUARY | - | - | - | - | - | - | - | - | - | - | - | 100.0 |
| MARCH | 0.2 | - | - | 0.1 | 0.2 | - | - | 0.1 | 82.5 | - | 100.0 | 100.0 |
| APRIL | 0.1 | 0.2 | 0.1 | 0.2 | 0.1 | 0.3 | 0.3 | 0.2 | 56.9 | 65.8 | 42.4 | 100.0 |
| MAY | - | - | - | 0.1 | - | - | - | 0.1 | - | - | - | 100.0 |
| JUNE | - | - | - | 0.1 | - | - | - | 0.1 | - | - | - | 100.0 |
| JULY | - | - | - | 0.1 | - | - | - | 0.1 | - | - | - | 100.0 |
| AUGUST | - | - | - | - | - | 0.1 | - | - | - | 94.0 | - | 100.0 |
| SEPTEMBER | - | 0.1 | - | - | 0.2 | 0.1 | - | - | 15.6 | 56.9 | - | 100.0 |
| OCTOBER | 0.1 | - | - | 0.1 | 0.2 | - | - | 0.1 | 46.1 | - | 55.1 | 100.0 |
| NOVEMBER | - | 0.1 | - | - | - | 0.2 | - | - | - | 34.4 | - | 100.0 |
| DECEMBER | 0.1 | - | - | 0.1 | 0.2 | - | - | 0.1 | 73.3 | 67.5 | - | 100.0 |
| TOTAL | 0.5 | 0.5 | 0.2 | 0.9 | 1.0 | 0.8 | 0.3 | 0.9 | 48.9 | 62.4 | 50.9 | 100.0 |

Table 4(d): Arrivals by Air from U.K. (Charter Flights), 2003 - 2006

| <u>MONTH</u> | <u>(000's)</u> | | | | <u>(000's)</u> | | | | <u>%</u> | | | |
|--------------|-------------------|-------------|-------------|-------------|----------------------|-------------|-------------|-------------|--------------------|-------------|-------------|-------------|
| | <u>SEATS USED</u> | | | | <u>SEATS OFFERED</u> | | | | <u>LOAD FACTOR</u> | | | |
| | <u>2003</u> | <u>2004</u> | <u>2005</u> | <u>2006</u> | <u>2003</u> | <u>2004</u> | <u>2005</u> | <u>2006</u> | <u>2003</u> | <u>2004</u> | <u>2005</u> | <u>2006</u> |
| JANUARY | 0.2 | - | - | - | 0.3 | - | - | - | 61.6 | - | - | - |
| FEBRUARY | 0.8 | - | - | - | 1.4 | - | - | - | 60.1 | - | - | - |
| MARCH | 0.2 | - | - | - | 0.5 | 0.1 | - | - | 41.2 | 17.0 | - | - |
| APRIL | 0.2 | - | - | - | 0.3 | - | - | - | 55.2 | - | - | - |
| MAY | 0.2 | 0.2 | - | - | 0.3 | 0.2 | - | - | 71.8 | 91.3 | - | - |
| JUNE | - | - | 0.2 | 0.2 | - | - | 0.2 | 0.2 | - | - | 90.9 | 69.4 |
| JULY | - | 0.2 | - | 0.2 | - | 0.3 | - | 0.3 | - | 63.5 | - | 84.4 |
| AUGUST | - | - | - | 0.2 | - | - | - | 0.2 | - | - | - | 97.3 |
| SEPTEMBER | 0.2 | 0.1 | 0.2 | - | 0.3 | 0.2 | 0.2 | - | 63.2 | 64.4 | 97.3 | - |
| OCTOBER | 0.2 | 0.1 | 0.1 | - | 0.2 | 0.1 | 0.2 | - | 87.6 | 100.0 | 88.1 | - |
| NOVEMBER | - | 0.2 | 0.2 | - | - | 0.2 | 0.2 | - | - | 93.6 | 97.3 | - |
| DECEMBER | - | - | - | - | - | - | - | - | - | - | - | - |
| TOTAL | 2.0 | 0.9 | 0.8 | 0.6 | 3.3 | 1.2 | 0.8 | 0.7 | 59.9 | 74.4 | 93.7 | 83.8 |

Notes:(i) Figures exclude MoD charter flights.

(ii) The total yearly figures have been rounded off from the actual figures and need not necessarily equal the sum of the rounded off monthly figures.

Table 4(e): Arrivals by Air (Charter Flights), 2007

| <u>MONTH</u> | <u>(000's)</u> <u>SEATS USED</u> | <u>(000's)</u> <u>SEATS OFFERED</u> | <u>% (i)</u> <u>LOAD FACTOR</u> |
|--------------|-------------------------------------|--|------------------------------------|
| January | - | - | - |
| February | 0.0 | 0.1 | 32.8 |
| March | - | - | - |
| April | 0.0 | 0.1 | 50.0 |
| May | 0.0 | 0.4 | 0.0 |
| June | 0.0 | 0.2 | 0.0 |
| July | 0.4 | 0.5 | 67.9 |
| August | 0.0 | 0.0 | 0.0 |
| September | 0.0 | 0.2 | 0.0 |
| October | - | - | - |
| November | 0.0 | 0.2 | 20.6 |
| December | 0.0 | 0.1 | 0.0 |
| TOTAL | 0.5 | 1.8 | 25.0 |

Note: (i) Load factors are calculated on the basis of actual figures and exclude visitors in transit when applicable. The total yearly figures have been rounded off from the actual figures and need not necessarily equal the sum of the rounded off monthly figures.

Table 5(a): Departures by Air to U.K. (Charter Flights), 1986 - 1989

| <u>MONTH</u> | <u>(000's)</u> | | | | <u>(000's)</u> | | | | <u>%</u> | | | |
|--------------|-------------------|-------------|-------------|-------------|----------------------|-------------|-------------|-------------|--------------------|-------------|-------------|-------------|
| | <u>SEATS USED</u> | | | | <u>SEATS OFFERED</u> | | | | <u>LOAD FACTOR</u> | | | |
| | <u>1986</u> | <u>1987</u> | <u>1988</u> | <u>1989</u> | <u>1986</u> | <u>1987</u> | <u>1988</u> | <u>1989</u> | <u>1986</u> | <u>1987</u> | <u>1988</u> | <u>1989</u> |
| JANUARY | - | 2.2 | 1.6 | 1.3 | - | 2.5 | 1.7 | 1.7 | - | 89.0 | 94.2 | 78.3 |
| FEBRUARY | 0.1 | 1.5 | 1.5 | 1.4 | 0.1 | 1.6 | 1.6 | 1.8 | 90.8 | 95.0 | 94.4 | 76.2 |
| MARCH | - | 1.0 | 1.7 | 0.3 | - | 1.2 | 1.8 | 0.4 | - | 83.1 | 93.9 | 79.1 |
| APRIL | - | 0.8 | 1.4 | 1.2 | - | 1.6 | 1.4 | 1.3 | - | 51.7 | 96.0 | 92.0 |
| MAY | 0.6 | - | 0.6 | - | 1.0 | 0.2 | 0.7 | - | 61.8 | 32.3 | 91.2 | - |
| JUNE | 0.7 | 1.2 | 0.2 | - | 0.8 | 1.3 | 0.3 | - | 85.6 | 95.1 | 90.4 | - |
| JULY | 0.5 | 0.9 | 0.4 | - | 0.6 | 1.0 | 0.5 | - | 87.7 | 86.0 | 80.6 | - |
| AUGUST | 0.7 | 1.0 | 0.6 | - | 0.7 | 1.0 | 0.7 | - | 97.8 | 93.9 | 96.0 | - |
| SEPTEMBER | 0.6 | 1.3 | 0.6 | 0.2 | 0.6 | 1.3 | 0.6 | 0.3 | 97.8 | 98.6 | 91.8 | 77.1 |
| OCTOBER | 0.6 | 1.0 | 0.6 | 0.1 | 0.9 | 1.0 | 0.7 | 0.1 | 74.0 | 95.5 | 91.0 | 67.2 |
| NOVEMBER | - | 1.6 | 0.9 | 0.6 | - | 1.3 | 1.2 | 1.2 | - | 81.5 | 78.6 | 47.7 |
| DECEMBER | - | 1.6 | 1.3 | 0.7 | - | 1.7 | 1.7 | 1.0 | - | 95.5 | 79.5 | 71.7 |
| TOTAL | 4.0 | 13.9 | 11.5 | 5.8 | 4.9 | 16.1 | 12.7 | 7.8 | 81.5 | 89.8 | 88.4 | 74.5 |

Table 5(b): Departures by Air to U.K. (Charter Flights), 1990 - 1992 & 1998

| <u>MONTH</u> | <u>(000's)</u> | | | | <u>(000's)</u> | | | | <u>%</u> | | | |
|--------------|-------------------|-------------|-------------|-------------|----------------------|-------------|-------------|-------------|--------------------|-------------|-------------|-------------|
| | <u>SEATS USED</u> | | | | <u>SEATS OFFERED</u> | | | | <u>LOAD FACTOR</u> | | | |
| | <u>1990</u> | <u>1991</u> | <u>1992</u> | <u>1998</u> | <u>1990</u> | <u>1991</u> | <u>1992</u> | <u>1998</u> | <u>1990</u> | <u>1991</u> | <u>1992</u> | <u>1998</u> |
| JANUARY | 0.8 | 0.1 | 0.1 | - | 1.0 | 0.2 | 0.1 | - | 77.3 | 64.6 | 93.1 | - |
| FEBRUARY | 0.9 | - | - | - | 1.0 | - | - | - | 83.6 | - | - | - |
| MARCH | 1.2 | 0.1 | - | - | 1.3 | 0.1 | - | - | 93.2 | 84.8 | - | - |
| APRIL | 1.0 | - | - | - | 1.3 | - | - | - | 77.9 | - | - | - |
| MAY | - | 0.9 | - | - | - | 1.9 | - | - | - | 47.6 | - | - |
| JUNE | - | 1.8 | - | - | - | 2.5 | - | - | - | 74.2 | - | - |
| JULY | 0.2 | 1.8 | 0.1 | - | 0.4 | 2.4 | 0.1 | - | 60.8 | 74.9 | 93.3 | - |
| AUGUST | 0.2 | 2.9 | - | - | 0.3 | 3.0 | - | - | 62.4 | 94.2 | - | - |
| SEPTEMBER | 0.2 | 2.0 | - | - | 0.5 | 2.3 | - | - | 45.1 | 87.6 | - | - |
| OCTOBER | - | 1.6 | - | - | - | 2.0 | - | 0.1 | - | 78.6 | - | 46.0 |
| NOVEMBER | 0.2 | 0.2 | - | 0.6 | 0.5 | 0.3 | - | 0.7 | 53.2 | 88.1 | - | 88.1 |
| DECEMBER | - | - | 0.3 | 0.3 | - | - | 0.2 | 0.4 | - | - | 75.4 | 57.3 |
| TOTAL | 4.7 | 9.7 | 0.4 | 0.9 | 6.2 | 12.4 | 0.5 | 1.2 | 75.9 | 78.2 | 84.3 | 74.8 |

Notes:(i) Figures exclude MoD charter flights.

(ii) The total yearly figures have been rounded off from the actual figures and need not necessarily equal the sum of the rounded off monthly figures.

Table 5(c): Departures by Air to U.K. (Charter Flights), 1999 - 2002

| <u>MONTH</u> | <u>(000's)</u> | | | | <u>(000's)</u> | | | | <u>%</u> | | | |
|--------------|-------------------|-------------|-------------|-------------|----------------------|-------------|-------------|-------------|--------------------|-------------|-------------|-------------|
| | <u>SEATS USED</u> | | | | <u>SEATS OFFERED</u> | | | | <u>LOAD FACTOR</u> | | | |
| | <u>1999</u> | <u>2000</u> | <u>2001</u> | <u>2002</u> | <u>1999</u> | <u>2000</u> | <u>2001</u> | <u>2002</u> | <u>1999</u> | <u>2000</u> | <u>2001</u> | <u>2002</u> |
| JANUARY | 0.1 | 0.1 | - | - | 0.1 | 0.1 | - | - | 81.9 | 82.6 | - | - |
| FEBRUARY | - | - | - | - | - | - | - | - | - | - | - | - |
| MARCH | 0.1 | - | - | 0.1 | 0.2 | - | - | 0.1 | 54.1 | - | - | 100.0 |
| APRIL | 0.1 | 0.2 | 0.1 | 0.2 | 0.1 | 0.3 | 0.3 | 0.2 | 100.0 | 65.8 | 42.4 | 100.0 |
| MAY | - | - | - | 0.1 | - | - | - | 0.1 | - | - | - | 100.0 |
| JUNE | - | - | - | 0.1 | - | - | - | 0.1 | - | - | - | 100.0 |
| JULY | - | - | - | 0.1 | - | - | - | 0.1 | - | - | - | 100.0 |
| AUGUST | - | - | - | - | - | 0.1 | - | - | - | 94.0 | - | - |
| SEPTEMBER | - | 0.1 | - | - | 0.2 | 0.1 | - | - | 15.0 | 56.9 | - | - |
| OCTOBER | 0.1 | - | - | 0.1 | 0.2 | - | - | 0.1 | 54.4 | - | - | 100.0 |
| NOVEMBER | - | 0.1 | - | - | - | 0.2 | - | - | - | 34.4 | - | - |
| DECEMBER | - | - | - | 0.1 | 0.2 | - | - | 0.1 | - | 67.5 | - | 53.8 |
| TOTAL | 0.5 | 0.5 | 0.2 | 0.9 | 1.0 | 0.8 | 0.4 | 0.9 | 48.8 | 62.4 | 42.4 | 94.6 |

Table 5(d): Departures by Air to U.K. (Charter Flights), 2003 - 2005

| <u>MONTH</u> | <u>(000's)</u> | | | | <u>(000's)</u> | | | | <u>%</u> | | | |
|--------------|-------------------|-------------|-------------|-------------|----------------------|-------------|-------------|-------------|--------------------|-------------|-------------|-------------|
| | <u>SEATS USED</u> | | | | <u>SEATS OFFERED</u> | | | | <u>LOAD FACTOR</u> | | | |
| | <u>2003</u> | <u>2004</u> | <u>2005</u> | <u>2006</u> | <u>2003</u> | <u>2004</u> | <u>2005</u> | <u>2006</u> | <u>2003</u> | <u>2004</u> | <u>2005</u> | <u>2006</u> |
| JANUARY | 0.1 | - | - | - | 0.3 | - | - | - | 43.8 | - | - | - |
| FEBRUARY | 0.9 | - | - | - | 1.4 | - | - | - | 64.5 | - | - | - |
| MARCH | 0.2 | - | - | - | 0.5 | 0.1 | - | - | 42.0 | 25.0 | - | - |
| APRIL | 0.2 | - | - | - | 0.3 | - | - | - | 62.8 | - | - | - |
| MAY | 0.2 | 0.2 | - | - | 0.3 | 0.2 | - | - | 63.1 | 90.4 | - | - |
| JUNE | - | - | 0.2 | 0.2 | - | - | 0.2 | 0.2 | - | - | 80.8 | 95.0 |
| JULY | - | 0.2 | - | 0.2 | - | 0.3 | - | 0.3 | - | 59.0 | - | 85.8 |
| AUGUST | - | - | - | 0.1 | - | - | - | 0.2 | - | - | - | 63.5 |
| SEPTEMBER | 0.1 | 0.2 | 0.2 | - | 0.3 | 0.2 | 0.2 | - | 41.9 | 86.8 | 68.9 | - |
| OCTOBER | 0.2 | 0.1 | 0.2 | - | 0.2 | 0.1 | 0.2 | - | 85.4 | 100.0 | 98.8 | - |
| NOVEMBER | - | 0.2 | 0.2 | - | - | 0.2 | 0.2 | - | - | 94.1 | 89.0 | - |
| DECEMBER | - | - | - | - | - | - | - | - | - | - | - | - |
| TOTAL | 1.9 | 0.9 | 0.7 | 0.6 | 3.3 | 1.2 | 0.8 | 0.7 | 58.2 | 78.1 | 83.5 | 81.8 |

Notes:(i) Figures exclude MoD charter flights.

(ii) The total yearly figures have been rounded off from the actual figures and need not necessarily equal the sum of the rounded off monthly figures.

Table 5(e): Departures by Air (Charter Flights), 2007

| <u>MONTH</u> | <u>(000's)</u> <u>SEATS USED</u> | <u>(000's)</u> <u>SEATS OFFERED</u> | <u>% (i)</u> <u>LOAD FACTOR</u> |
|--------------|-------------------------------------|--|------------------------------------|
| January | - | - | - |
| February | 0.0 | 0.1 | 32.8 |
| March | - | - | - |
| April | 0.0 | 0.1 | 50.0 |
| May | 0.2 | 0.4 | 59.6 |
| June | 0.2 | 0.2 | 100.0 |
| July | 0.2 | 0.5 | 42.0 |
| August | 0.0 | 0.0 | 78.6 |
| September | 0.2 | 0.2 | 73.5 |
| October | - | - | - |
| November | 0.0 | 0.2 | 18.6 |
| December | 0.1 | 0.1 | 73.6 |
| TOTAL | 1.0 | 1.8 | 56.0 |

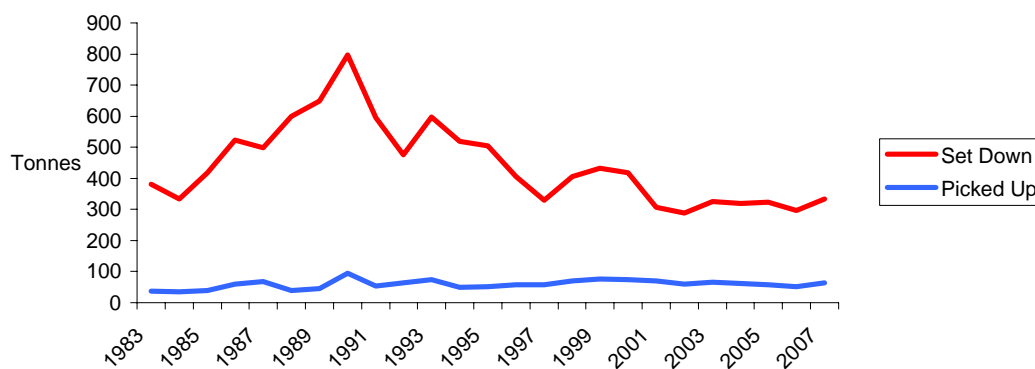
Note: (i) Load factors are calculated on the basis of actual figures and exclude visitors in transit when applicable. The total yearly figures have been rounded off from the actual figures and need not necessarily equal the sum of the rounded off monthly figures.

Table 6: Commercial Freight, Set Down/Picked Up, Gibraltar, 1983 - 2007

(000's kgs)

| <u>YEAR</u> | <u>SET DOWN</u> | <u>PICKED UP</u> |
|-------------|-----------------|------------------|
| 1983 | 381 | 38 |
| 1984 | 333 | 36 |
| 1985 | 419 | 40 |
| 1986 | 523 | 59 |
| 1987 | 499 | 67 |
| 1988 | 599 | 40 |
| 1989 | 648 | 45 |
| 1990 | 797 | 95 |
| 1991 | 596 | 54 |
| 1992 | 476 | 64 |
| 1993 | 597 | 74 |
| 1994 | 518 | 49 |
| 1995 | 504 | 52 |
| 1996 | 406 | 58 |
| 1997 | 330 | 57 |
| 1998 | 406 | 69 |
| 1999 | 433 | 77 |
| 2000 | 419 | 74 |
| 2001 | 306 | 71 |
| 2002 | 289 | 60 |
| 2003 | 325 | 66 |
| 2004 | 320 | 61 |
| 2005 | 324 | 57 |
| 2006 | 296 | 52 |
| 2007 | 333 | 63 |

COMMERCIAL FREIGHT, 1983 - 2007



Note: The figures relate to freight from/to all destinations.