

**GOVERNMENT OF GIBRALTAR**

**AIR TRAFFIC  
SURVEY  
2001**

**STATISTICS OFFICE**

## A. PREFACE

The Statistics (Air Traffic Survey) Order 1971 requires that a report and summary of the findings of the Air Traffic Survey be laid before the House of Assembly. This is the twenty-sixth report and contains a summary of statistics collected for the years 1977 to 2001.

The report contains statistical data on air traffic operations between Gibraltar and other destinations for both scheduled and charter airlines. The report also includes some general data on commercial freight.

I must express my thanks to the Airlines and to Terminal Management Ltd for their continued co-operation in the conduct of this Survey.

FEBRUARY 2002

GOVERNMENT STATISTICIAN

- CONTENTS -

A. B.		<u>PAGE</u>
	Preface	1
	Definitions	2
	Tables and Charts	3 - 42
<u>LIST OF TABLES</u>		
Table 1:	Arrivals/Departures by air from/to U.K. 1977 - 2001	3
Chart	Arrivals by Air from U.K. 1977 - 2001	4
Table 2: (a)	Arrivals by air from U.K. (Scheduled flights) 1977 - 1980	5
Table 2: (b)	Arrivals by air from U.K. (Scheduled flights) 1981 - 1984	6
Table 2: (c)	Arrivals by air from U.K. (Scheduled flights) 1985 - 1988	7
Table 2: (d)	Arrivals by air from U.K. (Scheduled flights) 1989 - 1992	8
Table 2: (e)	Arrivals by air from U.K. (Scheduled flights) 1993 - 1996	9
Table 2: (f)	Arrivals by air from U.K. (Scheduled flights) 1997 - 2000	10
Table 2: (g)	Arrivals by air from U.K. (Scheduled flights) 2001	11
Chart	Air Arrivals from U.K. (Scheduled flights) 2001	12
Chart	Arrivals by air from U.K. (Scheduled flights) 2001	13
Table 3: (a)	Departures by air to U.K. (Scheduled flights) 1977 - 1979	14
Table 3: (b)	Departures by air to U.K. (Scheduled flights) 1980 - 1982	15
Table 3: (c)	Departures by air to U.K. (Scheduled flights) 1983 - 1985	16
Table 3: (d)	Departures by air to U.K. (Scheduled flights) 1986 - 1988	17
Table 3: (e)	Departures by air to U.K. (Scheduled flights) 1989 - 1991	18
Table 3: (f)	Departures by air to U.K. (Scheduled flights) 1992 - 1994	19
Table 3: (g)	Departures by air to U.K. (Scheduled flights) 1995 - 1997	20
Table 3: (h)	Departures by air to U.K. (Scheduled flights) 1998 - 2000	21
Table 3: (i)	Departures by air to U.K. (Scheduled flights) 2001	22
Chart	Departures by air to U.K. (Scheduled flights) 2001	23
Chart	Departures by air to U.K. (Scheduled flights) 2001	24
Table 4: (a)	Arrivals by air from U.K. (Charter flights) 1981 - 1984	25
Table 4: (b)	Arrivals by air from U.K. (Charter flights) 1985 - 1988	26
Table 4: (c)	Arrivals by air from U.K. (Charter flights) 1989 - 1992	27
Table 4: (d)	Arrivals by air from U.K. (Charter flights) 1998 - 2000	28
Table 4: (e)	Arrivals by air (Charter flights) 2001	29
Table 5: (a)	Departures by air to U.K. (Charter flights) 1981 - 1984	30
Table 5: (b)	Departures by air to U.K. (Charter flights) 1985 - 1988	31
Table 5: (c)	Departures by air to U.K. (Charter flights) 1989 - 1992	32
Table 5: (d)	Departures by air to U.K. (Charter flights) 1998 - 2000	33
Table 5: (e)	Departures by air (Charter flights) 2001	34
Table 6: (a)	Arrivals by air from Morocco 1991 - 1994	35
Table 6: (b)	Arrivals by air from Morocco 1995 - 1998	36
Table 6: (c)	Arrivals by air from Morocco (Scheduled flights) 1999 - 2000	37
Table 7: (a)	Departures by air to Morocco 1991 - 1994	38
Table 7: (b)	Departures by air to Morocco 1995 - 1998	39
Table 7: (c)	Departures by air to Morocco (Scheduled flights) 1999 - 2000	40
Table 8	Commercial freight, Set down/picked up, Gibraltar 1974 - 2001	41
Chart	Commercial freight 1980 - 2001	42

## B. DEFINITIONS

- (a) Passenger Load Factor:  $\frac{\text{All seats used}}{\text{All seats offered (less in-transits)}} \times 100$
- (b) Revenue Load Factor:  $\frac{\text{All seats used by "paying" passengers}}{\text{All seats offered (less in-transits)}} \times 100$
- (c) Scheduled Services: are those performed according to a published timetable including those supplementary thereto, and available for use by members of the public.
- (d) Charter Services: includes all air passengers transport flights, other than scheduled services and Ministry of Defence Charters.

Table 1: Arrivals/Departures by Air from/to UK 1977 -2001

YEAR	ARRIVALS (000's)						DEPARTURES (000's)					
	TOTAL		SCHEDULED		CHARTER		TOTAL		SCHEDULED		CHARTER	
	Seats Offered	Seats Used	Seats Offered	Seats Used	Seats Offered	Seats Used	Seats Offered	Seats Used	Seats Offered	Seats Used	Seats Offered	Seats Used
1977	43.0	34.4	37.1	29.4	5.9	5.4	41.5	35.2	35.7	30.1	5.9	5.1
1978	49.3	42.2	34.0	29.4	15.3	12.8	48.9	42.9	33.6	29.8	15.3	13.1
1979	62.5	50.0	36.2	27.6	26.4	22.4	62.0	49.9	35.7	27.3	26.4	22.6
1980	62.8	50.0	30.2	22.9	32.7	27.1	62.7	50.9	30.0	23.1	32.7	27.8
1981	55.6	45.5	29.2	23.6	26.4	21.9	55.7	46.7	29.1	23.4	26.5	23.3
1982	60.0	47.5	35.6	27.0	24.4	20.5	60.0	47.6	35.6	26.7	24.3	20.9
1983	65.6	46.7	40.4	26.3	25.2	20.5	65.6	47.5	40.4	26.8	25.2	20.7
1984	61.3	50.3	34.6	27.4	26.7	22.9	61.2	51.0	34.6	27.6	26.7	23.4
1985	79.0	67.6	59.5	50.3	19.5	17.3	79.0	67.7	59.7	50.0	19.3	17.7
1986	101.7	83.2	96.9	79.1	4.8	4.1	101.8	84.1	96.9	80.1	4.9	4.0
1987	145.9	113.2	129.8	98.1	16.1	15.1	145.4	114.8	129.3	100.9	16.1	13.9
1988	208.7	151.2	196.0	139.6	12.7	11.6	208.3	156.1	195.6	144.6	12.7	11.5
1989	239.4	173.2	231.6	167.6	7.8	5.6	237.8	179.8	230.0	174.0	7.8	5.8
1990	172.0	141.5	165.8	136.8	6.2	4.7	175.1	148.5	168.9	143.8	6.2	4.7
1991	138.1	104.0	126.0	94.9	12.1	9.1	140.2	106.3	127.8	96.6	12.4	9.7
1992	127.4	98.1	127.0	97.7	0.4	0.4	128.2	101.0	127.7	100.5	0.5	0.4
1993	111.5	91.3	111.4	91.2	0.1	0.1	112.2	93.3	112.2	93.3	0.0	0.0
1994	106.4	85.2	106.4	85.2	0.0	0.0	107.1	86.9	207.2	86.9	0.0	0.0
1995	109.4	83.8	109.4	83.8	0.0	0.0	109.5	85.3	109.5	85.3	0.0	0.0
1996	98.7	78.1	98.7	78.1	0.0	0.0	98.1	78.2	98.1	78.2	0.0	0.0
1997	106.6	83.2	106.6	83.2	0.0	0.0	104.4	81.5	104.4	81.5	0.0	0.0
1998	121.5	92.0	120.4	91.0	1.2	1.1	120.2	91.0	119.0	90.1	1.2	0.9
1999	127.5	98.3	126.5	97.8	1.0	0.5	127.5	97.9	126.5	97.4	1.0	0.5
2000	139.4	104.3	138.6	103.7	0.8	0.5	138.9	107.1	138.1	106.6	0.8	0.5
2001	138.0	109.0	137.7	108.8	0.3	0.2	138.2	110.6	137.9	110.5	0.4	0.2

Note: Charter flights as from 1998 include all destinations.

# ARRIVALS BY AIR FROM UK - 1977 - 2001

(000's)

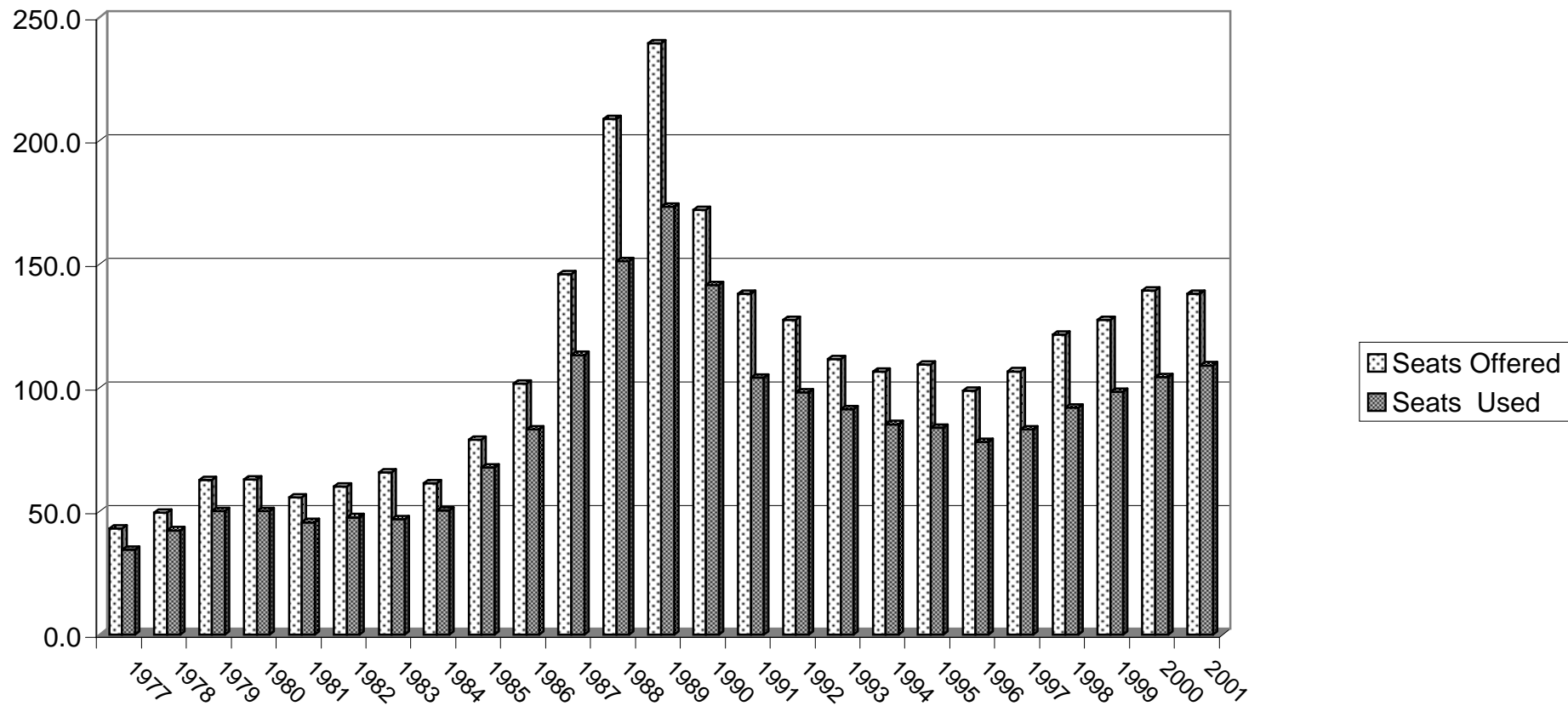


Table 2(a): Arrivals by air from U.K. (Scheduled Flights) 1977-1980

MONTH	SEATS USED (000's)				SEATS OFFERED (000's)				LOAD FACTOR (%) *			
	1977	1978	1979	1980	1977	1978	1979	1980	1977	1978	1979	1980
JANUARY	2.0	1.9	1.6	1.6	3.3	2.6	2.6	2.8	58.0	71.2	62.6	57.3
FEBRUARY	2.1	1.7	1.5	1.5	2.6	2.3	2.3	2.7	80.6	75.5	65.1	57.8
MARCH	2.9	2.5	2.4	2.3	3.3	2.7	2.7	2.8	88.1	94.1	88.7	83.6
APRIL	1.5	2.4	2.5	1.7	2.2	2.9	3.2	2.4	68.4	84.7	77.7	70.3
MAY	2.2	2.5	2.6	2.0	3.0	2.8	3.4	2.5	73.0	89.0	76.6	79.2
JUNE	2.7	2.8	2.3	2.0	3.6	2.9	3.3	2.4	75.7	95.4	70.5	81.1
JULY	3.5	3.3	3.0	2.5	3.8	3.3	3.1	2.8	93.2	99.8	93.7	89.4
AUGUST	3.3	3.1	3.0	2.4	3.6	3.4	3.4	2.7	91.2	92.0	89.9	91.1
SEPTEMBER	2.7	2.8	2.6	1.7	3.4	3.1	3.4	2.5	80.2	90.8	76.9	67.4
OCTOBER	2.5	2.5	2.7	2.3	3.0	2.7	3.4	2.8	83.7	90.5	79.1	81.3
NOVEMBER	1.8	1.9	1.6	1.3	2.6	2.5	2.7	1.9	71.2	77.2	58.8	70.7
DECEMBER	2.2	2.0	1.8	1.6	2.7	2.8	2.7	1.9	80.1	68.7	66.3	82.6
TOTAL	29.4	29.4	27.6	22.9	37.1	34.0	36.2	30.2	79.3	86.4	76.2	76.0

Note: \* All load factors are calculated on the basis of actual figures. The total yearly figure has been rounded off from the actual figure and need not necessarily equal the sum of the rounded off monthly figures.

Table 2(b): Arrivals by air from U.K. (Scheduled Flights) 1981-1984

MONTH	SEATS USED (000's)				SEATS OFFERED (000's)				LOAD FACTOR (%)*			
	1981	1982	1983	1984	1981	1982	1983	1984	1981	1982	1983	1984
JANUARY	1.5	1.7	1.6	1.5	2.1	2.2	2.9	2.6	70.6	78.2	55.0	59.8
FEBRUARY	1.5	1.8	1.5	1.7	1.9	2.2	2.6	2.1	81.1	77.5	59.0	81.8
MARCH	1.9	2.0	2.1	2.1	2.2	2.1	3.0	2.4	88.2	95.9	70.3	87.2
APRIL	2.2	2.8	2.3	2.5	2.7	3.2	3.9	3.1	79.3	86.7	59.2	79.2
MAY	1.9	2.3	2.2	2.3	2.7	3.2	4.0	3.2	67.7	72.4	55.4	70.1
JUNE	1.9	2.3	2.4	2.2	2.6	3.3	3.9	3.3	72.5	70.9	60.3	68.9
JULY	2.4	2.7	3.0	2.9	2.8	3.5	4.0	3.4	85.5	77.8	74.4	86.1
AUGUST	2.4	2.8	2.8	2.8	2.6	3.3	4.0	3.2	93.3	82.4	70.5	86.7
SEPTEMBER	1.9	2.4	2.7	2.5	2.7	3.4	3.9	3.2	71.9	70.8	68.0	76.4
OCTOBER	2.3	2.3	2.3	2.6	2.7	3.4	3.6	3.2	85.2	69.0	63.0	79.3
NOVEMBER	1.8	1.9	1.6	2.0	2.1	2.9	2.2	2.4	85.0	65.2	71.1	85.0
DECEMBER	1.9	2.0	1.8	2.3	2.1	2.9	2.4	2.5	91.4	70.5	77.1	90.1
TOTAL	23.6	27.0	26.3	27.4	29.2	35.6	40.4	34.6	80.7	75.9	65.0	79.0

Note: \* All load factors are calculated on the basis of actual figures. The total yearly figure has been rounded off from the actual figure and need not necessarily equal the sum of the rounded off monthly figures.



Table 2(c): Arrivals by air from U.K. (Scheduled Flights) 1985-1988

MONTH	SEATS USED (000's)				SEATS OFFERED (000's)				LOAD FACTOR (%) *			
	1985	1986	1987	1988	1985	1986	1987	1988	1985	1986	1987	1988
JANUARY	2.1	4.1	4.7	7.0	2.6	7.0	7.8	12.7	79.1	58.6	60.3	55.2
FEBRUARY	2.0	4.4	5.0	8.4	2.2	5.9	6.6	11.3	90.9	75.2	76.2	74.9
MARCH	3.0	6.5	7.0	10.6	3.2	7.1	8.6	13.1	97.0	92.2	81.9	81.2
APRIL	3.9	5.6	7.6	10.4	4.6	7.2	8.4	14.2	84.8	77.4	90.0	73.7
MAY	3.9	7.4	9.0	13.1	4.4	8.7	11.4	17.2	89.5	84.8	79.3	76.3
JUNE	4.3	7.1	8.1	11.9	5.0	8.5	12.0	16.2	86.4	83.2	67.7	73.6
JULY	5.4	8.3	10.6	15.5	5.7	9.0	12.4	19.5	95.2	92.2	85.3	79.7
AUGUST	5.8	8.7	10.7	14.6	6.5	9.8	12.4	18.1	89.2	88.2	85.9	80.7
SEPTEMBER	4.7	7.6	8.7	14.0	5.8	8.9	11.6	18.0	79.8	85.0	74.8	77.9
OCTOBER	5.1	7.8	9.8	14.1	5.8	9.1	12.4	18.4	86.7	85.4	79.4	76.7
NOVEMBER	4.6	5.1	7.7	8.9	6.3	7.4	13.0	14.7	73.4	69.4	59.4	60.2
DECEMBER	5.5	6.5	8.7	10.9	7.4	8.2	12.9	16.3	74.1	78.6	67.4	67.3
TOTAL	50.3	79.1	97.6	139.4	59.5	96.9	129.5	189.7	84.5	81.6	75.2	73.5

Note: \* All load factors are calculated on the basis of actual figures. The total yearly figure has been rounded off from the actual figure and need not necessarily equal the sum of the rounded off monthly figures.

Table 2(d): Arrivals by air from U.K. (Scheduled Flights) 1989-1992

MONTH	SEATS USED (000's)				SEATS OFFERED (000's)				LOAD FACTOR (%) *			
	1989	1990	1991	1992	1989	1990	1991	1992	1989	1990	1991	1992
JANUARY	9.7	10.0	7.3	6.2	18.0	15.1	12.2	10.0	53.9	66.3	59.3	61.2
FEBRUARY	10.4	10.6	6.8	6.2	14.4	13.1	10.4	8.7	72.4	81.1	65.9	71.0
MARCH	13.6	12.9	7.4	7.7	17.8	14.8	9.2	9.2	76.3	87.1	81.3	83.0
APRIL	11.9	11.6	6.7	9.1	17.6	14.2	7.9	12.8	67.7	82.2	84.1	71.1
MAY	14.9	12.2	7.5	9.3	19.3	13.8	8.3	12.5	77.2	88.1	90.7	74.1
JUNE	14.7	12.1	7.9	9.6	19.8	13.7	9.5	12.0	74.3	88.3	83.5	79.8
JULY	20.3	13.9	10.8	11.5	24.8	14.6	12.3	12.5	81.8	95.5	88.1	92.2
AUGUST	18.5	12.5	9.7	9.8	24.4	14.3	11.9	12.6	75.8	87.2	81.3	77.4
SEPTEMBER	16.5	12.3	9.0	6.9	22.2	13.9	11.5	8.3	74.3	88.5	78.1	82.9
OCTOBER	16.3	11.5	8.6	9.0	22.5	14.5	11.7	11.9	72.1	79.2	74.0	75.6
NOVEMBER	9.9	8.4	6.7	6.6	15.5	11.6	11.1	8.8	63.7	72.2	60.4	74.7
DECEMBER	10.9	8.8	6.5	6.0	15.3	12.1	10.2	7.5	71.5	72.3	63.4	79.5
TOTAL	167.6	136.8	94.9	97.7	231.6	165.6	126.0	127.0	72.4	82.5	75.3	76.9

Note: \* All load factors are calculated on the basis of actual figures. The total yearly figure has been rounded off from the actual figure and need not necessarily equal the sum of the rounded off monthly figures.

Table 2(e): Arrivals by air from U.K. (Scheduled Flights) 1993-1996

MONTH	SEATS USED (000's)				SEATS OFFERED (000's)				LOAD FACTOR (%) *			
	1993	1994	1995	1996	1993	1994	1995	1996	1993	1994	1995	1996
JANUARY	5.7	5.1	4.1	4.6	7.4	7.1	7.8	7.7	77.9	71.3	53.0	53.9
FEBRUARY	5.5	5.0	5.6	5.5	6.1	5.9	6.6	7.7	90.7	83.5	84.2	68.9
MARCH	7.1	6.9	7.3	7.0	7.5	7.4	7.8	8.4	95.9	93.8	93.8	83.7
APRIL	8.2	6.7	7.7	6.3	10.2	9.4	10.1	8.5	79.9	71.0	76.0	74.3
MAY	8.6	8.3	8.1	7.7	11.1	9.9	10.3	9.0	76.7	83.2	78.1	86.4
JUNE	8.6	8.3	7.6	7.5	11.1	10.6	9.8	8.7	77.7	79.0	77.0	85.6
JULY	10.1	9.6	8.8	7.6	10.9	10.8	10.3	8.4	92.3	89.0	85.8	90.7
AUGUST	8.8	8.4	7.8	6.6	11.0	11.2	10.1	7.5	79.9	75.4	77.7	87.8
SEPTEMBER	8.7	8.3	7.2	7.2	10.7	10.2	9.3	8.4	81.5	80.8	77.7	86.4
OCTOBER	7.9	7.5	7.3	6.6	11.2	9.8	10.0	8.5	70.5	76.3	73.7	78.3
NOVEMBER	6.1	5.3	5.8	5.8	7.3	6.9	8.4	7.8	84.0	76.3	69.5	74.5
DECEMBER	5.8	5.9	6.5	5.7	6.9	7.2	8.9	8.1	84.8	82.4	73.8	70.7
TOTAL	91.2	85.2	83.8	78.1	111.4	106.4	109.4	98.7	81.9	80.0	76.7	79.1

Note: \* All load factors are calculated on the basis of actual figures. The total yearly figure has been rounded off from the actual figure and need not necessarily equal the sum of the rounded off monthly figures.

Table 2(f): Arrivals by air from U.K. (Scheduled Flights) 1997-2000

MONTH	SEATS USED (000's)				SEATS OFFERED (000's)				LOAD FACTOR (%) *			
	1997	1998	1999	2000	1997	1998	1999	2000	1997	1998	1999	2000
JANUARY	4.6	4.8	5.2	4.6	7.9	9.4	8.4	11.1	57.8	51.1	62.5	41.5
FEBRUARY	5.2	6.0	6.3	6.2	6.3	9.0	7.4	9.8	83.0	66.4	84.5	63.6
MARCH	6.1	7.6	8.1	8.7	6.9	9.8	8.8	10.7	87.4	78.1	91.4	81.3
APRIL	5.4	7.8	7.8	9.1	6.6	10.0	9.8	10.4	82.3	77.9	80.4	87.2
MAY	8.6	9.0	10.0	10.1	9.9	11.4	12.5	13.4	86.4	79.0	80.3	75.9
JUNE	7.6	8.0	9.8	9.7	9.4	10.9	11.8	12.4	80.2	73.6	82.7	78.3
JULY	8.6	9.3	10.7	10.8	9.5	10.6	12.4	13.4	90.8	87.3	85.8	80.8
AUGUST	8.3	9.2	9.2	10.1	10.0	11.2	11.6	12.9	83.4	82.2	79.2	78.1
SEPTEMBER	8.1	8.4	8.9	10.5	10.7	10.7	11.8	12.7	75.6	78.0	75.6	82.5
OCTOBER	8.5	8.2	8.3	10.0	10.4	11.2	11.7	13.4	81.1	73.1	70.3	74.6
NOVEMBER	5.9	6.5	6.5	7.0	9.2	8.4	9.7	9.1	63.7	78.0	67.0	76.2
DECEMBER	6.4	6.3	7.1	7.0	9.8	7.9	10.6	9.3	65.8	79.7	66.9	75.0
TOTAL	83.2	91.0	97.8	103.7	106.6	120.4	126.5	138.6	78.0	75.6	77.3	74.9

Note: \* All load factors are calculated on the basis of actual figures. The total yearly figure has been rounded off from the actual figure and need not necessarily equal the sum of the rounded off monthly figures.

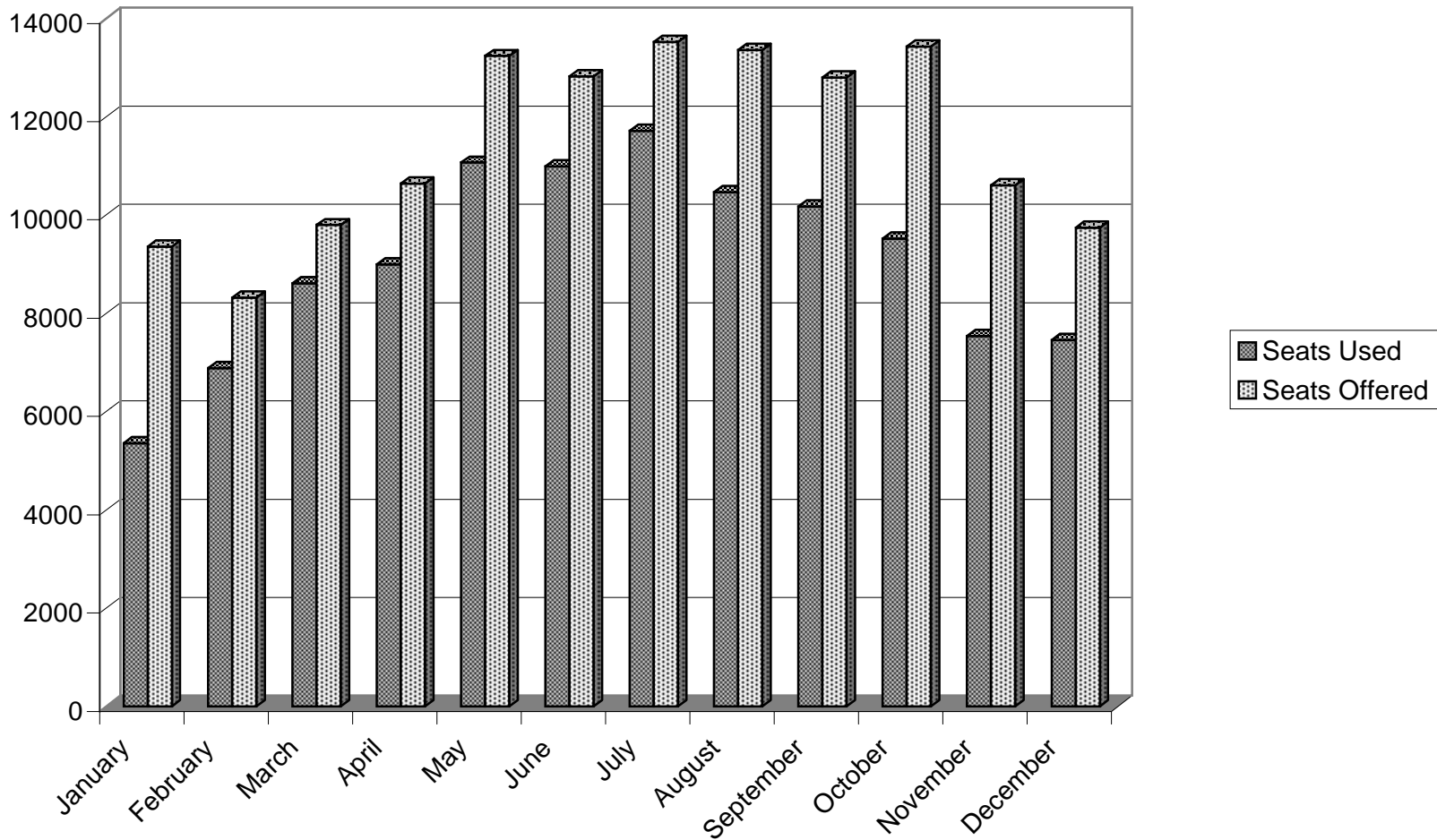
Table 2 (g): Arrivals by air from U. K. (Scheduled Flights) 2001

2001

MONTH	SEATS USED (000's)	SEATS OFFERED (000's)	LOAD FACTOR %
January	5.4	9.4	57.3
February	6.9	8.3	82.7
March	8.6	9.8	87.9
April	9.0	10.6	84.5
May	11.1	13.2	83.6
June	11.0	12.8	85.7
July	11.7	13.5	86.6
August	10.5	13.4	78.3
September	10.2	12.8	79.5
October	9.5	13.4	70.9
November	7.5	10.6	71.1
December	7.5	9.7	76.5
TOTAL	108.8	137.7	79.0

Note: Load factors are calculated on the basis of actual figures and exclude visitors in transit. The total yearly figures have been rounded off from the actual figures and need not necessarily equal the sum of the rounded off monthly figures.

# AIR ARRIVALS FROM UK (SCHEDULED FLIGHTS) - 2001



## ARRIVALS BY AIR FROM UK (SCHEDULED FLIGHTS) 2001

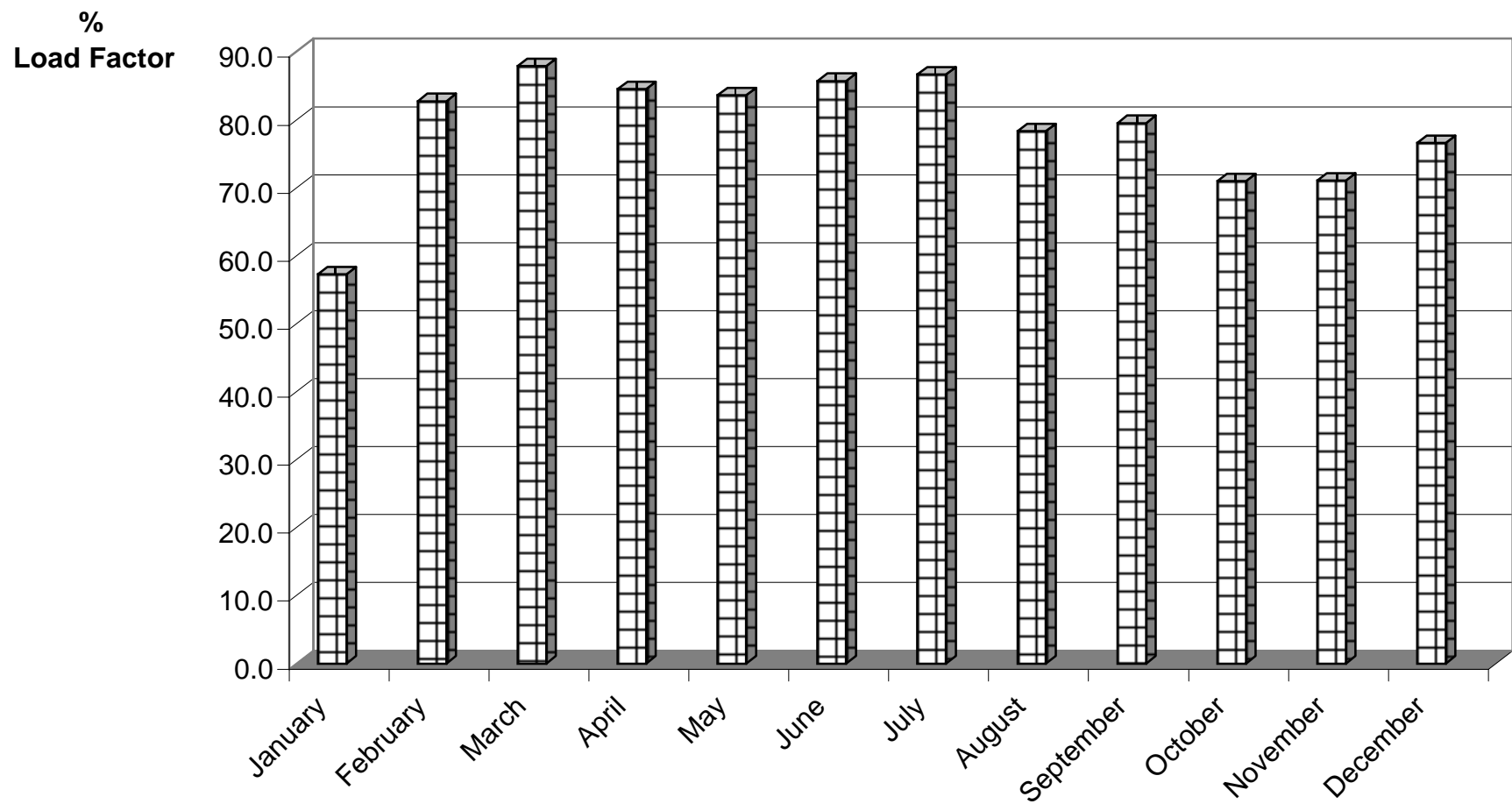


Table 3(a): Departures by air to U.K. (Scheduled Flights) 1977-1979

MONTH	SEATS USED (000's)			SEATS OFFERED (000's)			LOAD FACTOR (%)		
	1977	1978	1979	1977	1978	1979	1977 * (**)	1978 * (**)	1979 * (**)
JANUARY	2.3	2.1	1.7	3.2	2.6	2.5	70.5 (66.7)	79.6 (76.0)	69.0 (63.5)
FEBRUARY	2.1	1.6	1.4	2.6	2.2	2.3	80.7 (73.1)	70.3 (63.0)	65.0 (53.9)
MARCH	2.7	2.3	2.4	3.2	2.6	2.6	86.4 (73.9)	89.2 (79.2)	91.4 (83.6)
APRIL	1.7	2.7	2.5	2.0	2.9	3.2	87.8 (85.8)	92.7 (89.3)	80.0 (76.9)
MAY	2.2	2.4	2.3	2.9	2.8	3.4	74.9 (71.5)	88.8 (84.0)	69.5 (65.2)
JUNE	2.8	2.7	2.3	3.3	2.9	3.2	85.0 (80.4)	92.1 (89.0)	69.8 (66.3)
JULY	3.1	3.0	2.5	3.5	3.2	3.1	88.4 (85.4)	93.7 (92.1)	79.3 (77.3)
AUGUST	3.3	3.2	3.3	3.6	3.4	3.4	93.0 (90.0)	95.2 (93.7)	97.3 (95.1)
SEPTEMBER	3.2	3.1	2.9	3.3	3.1	3.3	96.1 (90.9)	100.0 (97.2)	88.6 (85.2)
OCTOBER	2.8	2.7	2.8	3.0	2.7	3.3	92.6 (88.1)	99.6 (95.1)	82.9 (78.0)
NOVEMBER	1.8	2.1	1.7	2.4	2.4	2.7	74.1 (68.7)	85.1 (80.3)	63.9 (59.8)
DECEMBER	2.1	1.9	1.5	2.7	2.8	2.7	77.0 (73.6)	68.8 (66.1)	55.3 (52.0)
TOTAL	30.1	29.8	27.3	35.7	33.6	35.7	84.3 (79.4)	88.6 (84.6)	76.5 (72.6)

Note: \* All load factors are calculated on the basis of actual figures. The total yearly figure has been rounded off from the actual figure and need not necessarily equal the sum of the rounded off monthly figures.

\*\* Revenue load factors exclude non-paying passengers and are also calculated on actual figures.



Table 3(b): Departures by air to U.K. (Scheduled Flights) 1980-1982

MONTH	SEATS USED (000's)			SEATS OFFERED (000's)			LOAD FACTOR (%)		
	1980	1981	1982	1980	1981	1982	1980 * (**)	1981 * (**)	1982 * (**)
JANUARY	1.7	1.6	1.9	2.8	2.1	2.2	59.3 (56.6)	75.9 (73.2)	85.2 (82.5)
FEBRUARY	1.5	1.5	1.6	2.7	1.9	2.3	56.6 (52.3)	79.3 (74.7)	70.9 (67.4)
MARCH	2.1	1.6	1.9	2.8	2.1	2.1	75.7 (67.7)	76.5 (70.9)	91.3 (86.2)
APRIL	2.0	2.2	2.6	2.4	2.7	3.2	84.7 (81.9)	83.0 (80.7)	82.1 (80.3)
MAY	1.7	1.8	2.1	2.5	2.7	3.2	69.0 (64.0)	64.4 (61.6)	67.0 (65.3)
JUNE	2.0	1.8	2.3	2.3	2.6	3.4	84.4 (80.4)	72.0 (69.3)	69.3 (67.4)
JULY	2.1	2.0	2.5	2.7	2.8	3.5	77.1 (74.5)	69.0 (65.9)	70.4 (69.3)
AUGUST	2.6	2.4	3.0	2.7	2.6	3.3	96.9 (95.4)	92.4 (89.9)	90.6 (88.6)
SEPTEMBER	2.2	2.4	2.8	2.5	2.7	3.4	84.8 (82.1)	89.2 (84.8)	83.1 (81.5)
OCTOBER	2.4	2.4	2.5	2.8	2.7	3.4	87.5 (82.8)	87.7 (84.0)	72.2 (68.2)
NOVEMBER	1.3	1.9	1.9	1.9	2.1	2.8	70.6 (65.2)	89.6 (84.3)	67.7 (64.2)
DECEMBER	1.5	1.8	1.6	1.9	2.1	2.8	78.1 (75.4)	86.1 (83.2)	55.2 (53.5)
TOTAL	23.1	23.4	26.7	30.0	29.1	35.6	77.0 (73.2)	80.2 (76.7)	75.1 (72.6)

Note: \* All load factors are calculated on the basis of actual figures. The total yearly figure has been rounded off from the actual figure and need not necessarily equal the sum of the rounded off monthly figures.

\*\* Revenue load factors exclude non-paying passengers and are also calculated on actual figures.

Table 3(c): Departures by air to U.K. (Scheduled Flights) 1983-1985

MONTH	SEATS USED (000's)			SEATS OFFERED (000's)			LOAD FACTOR (%)		
	1983	1984	1985	1983	1984	1985	1983 * (**)	1984 * (**)	1985 * (**)
JANUARY	1.7	2.1	2.3	2.9	2.6	2.6	61.2 (58.8)	80.5 (77.6)	89.3 (87.0)
FEBRUARY	1.5	1.5	1.9	2.6	2.1	2.2	56.6 (53.7)	72.6 (69.7)	85.9 (82.8)
MARCH	2.0	2.0	2.8	3.0	2.4	3.2	67.2 (61.7)	85.2 (81.3)	89.9 (86.4)
APRIL	2.6	2.5	4.0	3.9	3.1	4.6	65.8 (63.4)	80.3 (77.6)	89.0 (87.3)
MAY	2.0	2.0	3.6	4.0	3.2	4.4	48.6 (47.0)	64.0 (61.7)	81.7 (79.9)
JUNE	2.6	2.4	4.3	3.9	3.2	5.0	65.5 (64.2)	74.3 (72.2)	85.5 (84.4)
JULY	2.4	2.3	4.3	4.0	3.3	5.6	60.8 (59.2)	69.6 (68.0)	76.3 (75.5)
AUGUST	3.3	3.1	6.2	4.0	3.3	6.5	81.4 (79.5)	94.1 (92.2)	94.3 (93.4)
SEPTEMBER	3.1	3.0	5.6	3.9	3.3	5.9	78.3 (75.3)	92.5 (89.5)	94.1 (92.4)
OCTOBER	2.5	2.6	5.2	3.6	3.2	5.9	69.9 (66.6)	80.5 (76.2)	89.2 (86.8)
NOVEMBER	1.6	2.1	5.4	2.2	2.4	6.3	74.2 (71.1)	87.9 (83.0)	85.6 (82.7)
DECEMBER	1.5	2.0	4.4	2.4	2.5	7.5	63.3 (61.4)	78.9 (77.4)	58.9 (58.0)
TOTAL	26.8	27.6	50.0	40.4	34.6	59.7	66.2 (63.7)	80.0 (77.2)	83.9 (82.1)

Note: \* All load factors are calculated on the basis of actual figures. The total yearly figure has been rounded off from the actual figure and need not necessarily equal the sum of the rounded off monthly figures.

\*\* Revenue load factors exclude non-paying passengers and are also calculated on actual figures.

Table 3(d): Departures by air to U.K. (Scheduled Flights) 1986-1988

MONTH	SEATS USED (000's)			SEATS OFFERED (000's)			LOAD FACTOR (%)		
	1986	1987	1988	1986	1987	1988	1986 * (**)	1987 * (**)	1988 * (**)
JANUARY	5.2	6.4	9.0	6.9	7.9	12.7	75.8 (74.2)	80.6 (79.4)	70.6 (69.7)
FEBRUARY	4.1	4.7	8.2	5.9	6.6	11.2	70.0 (66.1)	70.8 (68.0)	73.1 (72.0)
MARCH	6.0	7.0	9.4	7.1	8.6	12.9	84.1 (82.8)	81.8 (78.1)	73.0 (71.5)
APRIL	6.8	7.5	12.2	7.3	8.3	14.4	92.0 (90.5)	90.2 (89.1)	85.0 (83.6)
MAY	6.3	8.7	11.6	8.6	11.2	16.8	73.9 (72.4)	77.8 (76.1)	68.9 (67.8)
JUNE	7.5	8.7	14.1	8.6	11.9	16.6	87.1 (85.9)	72.9 (71.4)	85.1 (83.8)
JULY	6.9	8.7	13.3	9.0	12.1	17.5	76.6 (75.4)	71.9 (70.6)	76.0 (75.3)
AUGUST	9.2	11.6	15.9	9.8	12.5	18.1	93.4 (92.7)	92.5 (91.7)	87.9 (87.3)
SEPTEMBER	8.6	10.6	15.4	9.0	11.7	17.8	95.7 (94.1)	90.3 (89.2)	86.2 (85.2)
OCTOBER	8.5	10.5	15.5	9.1	12.5	18.2	93.0 (91.1)	84.1 (82.5)	85.5 (84.4)
NOVEMBER	6.2	9.4	11.0	7.4	12.9	14.9	83.8 (81.2)	72.3 (71.1)	74.3 (72.4)
DECEMBER	4.9	6.9	8.7	8.2	13.0	16.1	59.7 (58.5)	55.6 (53.6)	53.8 (53.1)
TOTAL	80.1	100.7	144.3	96.9	129.2	187.2	82.7 (81.1)	77.8 (77.7)	77.1 (76.1)

Note: \* All load factors are calculated on the basis of actual figures. The total yearly figure has been rounded off from the actual figure and need not necessarily equal the sum of the rounded off monthly figures.

\*\* Revenue load factors exclude non-paying passengers and are also calculated on actual figures.

Table 3(e): Departures by air to U.K. (Scheduled Flights) 1989-1991

MONTH	SEATS USED (000's)			SEATS OFFERED (000's)			LOAD FACTOR (%)		
	1989	1990	1991	1989	1990	1991	1989 * (**)	1990 * (**)	1991 * (**)
JANUARY	12.2	11.4	7.5	18.0	15.4	12.1	67.7 (66.4)	74.3 (73.0)	62.1 (60.6)
FEBRUARY	10.2	10.5	6.7	14.4	13.3	10.3	70.9 (69.3)	79.1 (77.2)	65.4 (63.2)
MARCH	11.9	12.3	6.2	17.8	14.4	8.7	67.1 (65.0)	85.0 (83.2)	71.3 (69.1)
APRIL	13.6	13.0	7.8	17.5	14.6	8.6	77.3 (76.3)	89.2 (87.9)	90.2 (87.6)
MAY	13.3	11.7	6.9	18.7	14.2	8.2	70.7 (69.4)	82.2 (80.6)	83.6 (81.0)
JUNE	15.9	13.2	7.9	19.5	14.1	9.8	81.6 (80.5)	93.3 (92.0)	80.5 (77.9)
JULY	17.1	12.5	9.2	24.5	14.6	12.4	70.0 (69.0)	86.0 (84.7)	73.8 (71.2)
AUGUST	20.9	13.7	11.0	24.5	15.2	12.3	85.1 (84.4)	90.5 (89.8)	89.5 (87.0)
SEPTEMBER	18.4	13.4	9.9	22.0	14.3	12.2	83.5 (82.5)	93.2 (91.7)	81.7 (78.7)
OCTOBER	18.3	13.8	10.1	22.5	14.7	12.1	81.5 (80.1)	93.5 (92.2)	83.3 (81.5)
NOVEMBER	11.9	9.6	7.3	15.5	12.0	10.9	77.2 (75.3)	80.5 (77.5)	67.0 (65.4)
DECEMBER	10.2	8.7	6.1	15.0	12.1	10.2	68.2 (67.1)	71.8 (70.2)	59.7 (58.5)
TOTAL	174.0	143.8	96.6	230.0	168.9	127.8	75.7 (70.5)	85.1 (83.6)	75.6 (73.3)

Note: \* All load factors are calculated on the basis of actual figures. The total yearly figure has been rounded off from the actual figure and need not necessarily equal the sum of the rounded off monthly figures.

\*\* Revenue load factors exclude non-paying passengers and are also calculated on actual figures.

Table 3(f): Departures by air to U.K. (Scheduled Flights) 1992-1994

MONTH	SEATS USED (000's)			SEATS OFFERED (000's)			LOAD FACTOR (%)		
	1992	1993	1994	1992	1993	1994	1992 * (**)	1993 * (**)	1994 * (**)
JANUARY	6.7	6.1	5.8	10.2	7.6	7.1	65.9 (64.8)	80.5 (79.3)	81.9 (80.8)
FEBRUARY	6.2	5.4	5.0	8.6	6.4	6.2	72.5 (70.2)	83.8 (82.9)	81.7 (80.1)
MARCH	7.0	6.7	5.5	9.2	7.8	7.5	76.0 (73.8)	86.1 (84.7)	74.1 (72.9)
APRIL	9.5	8.3	7.6	12.8	10.0	9.3	74.3 (73.2)	82.3 (81.0)	81.9 (81.2)
MAY	8.6	7.9	7.6	12.6	11.1	10.1	68.1 (66.8)	71.3 (69.8)	76.3 (75.2)
JUNE	9.8	9.4	8.7	12.2	11.1	10.4	80.4 (79.1)	84.1 (82.9)	84.8 (83.7)
JULY	9.8	8.7	8.4	12.5	11.3	10.9	78.5 (76.7)	77.5 (76.7)	77.0 (77.5)
AUGUST	11.5	10.0	9.7	12.8	10.9	10.9	89.7 (88.8)	91.4 (90.5)	89.0 (88.3)
SEPTEMBER	7.6	9.7	9.3	8.2	10.5	10.2	91.9 (90.2)	92.2 (91.0)	91.8 (91.2)
OCTOBER	10.5	9.5	8.9	11.9	11.1	10.2	87.7 (85.9)	86.0 (85.0)	88.3 (87.5)
NOVEMBER	7.8	6.5	5.6	9.0	7.3	6.8	86.0 (84.2)	88.8 (87.3)	83.3 (82.4)
DECEMBER	5.6	5.1	4.8	7.6	6.9	7.2	73.8 (72.5)	73.2 (72.4)	67.3 (66.9)
TOTAL	100.5	93.3	86.9	127.7	112.2	107.1	78.7 (77.2)	83.2 (82.0)	81.2 (80.3)

Note: \* All load factors are calculated on the basis of actual figures. The total yearly figure has been rounded off from the actual figure and need not necessarily equal the sum of the rounded off monthly figures.

\*\* Revenue load factors exclude non-paying passengers and are also calculated on actual figures.

Table 3(g): Departures by air to U.K. (Scheduled Flights) 1995-1997

MONTH	SEATS USED (000's)			SEATS OFFERED (000's)			LOAD FACTOR (%)		
	1995	1996	1997	1995	1996	1997	1995 * (**)	1996 * (**)	1997 * (**)
JANUARY	5.5	5.3	4.7	7.8	7.7	6.8	70.8 (70.3)	69.4 (69.0)	68.5 (67.4)
FEBRUARY	5.2	5.6	5.1	6.9	8.2	6.4	75.1 (74.4)	68.1 (67.6)	79.4 (78.3)
MARCH	6.6	6.3	5.2	7.7	8.1	6.8	85.1 (84.6)	77.1 (76.4)	76.4 (75.5)
APRIL	8.3	7.0	6.1	10.3	8.7	6.7	80.5 (80.3)	81.0 (80.7)	90.1 (89.7)
MAY	7.3	7.0	7.7	10.4	8.7	9.6	69.8 (69.4)	79.9 (79.5)	79.8 (79.2)
JUNE	8.2	8.1	7.9	9.9	9.1	9.5	82.5 (82.0)	89.5 (89.1)	83.2 (83.0)
JULY	7.9	6.8	7.5	10.3	8.6	9.7	76.5 (76.0)	79.1 (79.0)	77.0 (76.7)
AUGUST	8.5	6.8	8.7	10.3	7.6	9.5	82.8 (82.4)	89.7 (89.5)	91.7 (91.4)
SEPTEMBER	8.4	8.0	8.8	9.6	8.5	10.5	87.6 (87.0)	93.5 (93.2)	83.8 (83.5)
OCTOBER	8.3	7.3	8.6	9.9	8.3	9.6	83.0 (82.4)	88.6 (88.2)	90.0 (89.6)
NOVEMBER	6.3	5.9	6.5	8.5	7.6	9.2	73.8 (73.1)	77.7 (77.1)	70.3 (70.0)
DECEMBER	4.8	4.1	4.7	7.9	7.0	10.1	61.5 (60.8)	58.8 (58.4)	46.3 (46.1)
TOTAL	85.3	78.2	81.5	109.5	98.1	104.4	77.8 (77.3)	79.6 (79.0)	78.1 (77.6)

Note: \* All load factors are calculated on the basis of actual figures. The total yearly figure has been rounded off from the actual figure and need not necessarily equal the sum of the rounded off monthly figures.

\*\* Revenue load factors exclude non-paying passengers and are also calculated on actual figures.

Table 3(h): Departures by air to U.K. (Scheduled Flights) 1998-2000

MONTH	SEATS USED (000's)			SEATS OFFERED (000's)			LOAD FACTOR (%)		
	1998	1999	2000	1998	1999	2000	1998 * (**)	1999 * (**)	2000 * (**)
JANUARY	6.0	6.3	6.5	9.5	8.5	11.1	63.1 (62.7)	74.1 (73.9)	58.8 (58.7)
FEBRUARY	5.3	5.7	6.0	8.7	7.5	9.8	60.7 (60.2)	75.1 (74.3)	61.5 (61.4)
MARCH	6.7	7.0	8.0	9.9	8.5	10.6	67.9 (67.9)	82.8 (82.7)	75.2 (74.9)
APRIL	8.2	8.7	9.1	10.0	9.8	10.1	81.9 (81.7)	89.0 (88.5)	89.4 (89.3)
MAY	8.0	8.9	9.9	11.2	12.5	13.3	71.3 (70.9)	71.0 (71.0)	74.5 (74.5)
JUNE	8.1	10.0	10.5	10.8	11.6	12.4	74.6 (74.2)	86.3 (86.3)	84.9 (84.8)
JULY	7.7	9.4	9.8	10.3	12.5	13.4	74.5 (74.3)	75.7 (75.7)	73.0 (72.9)
AUGUST	9.9	9.6	10.6	11.1	11.4	12.7	89.5 (89.4)	84.7 (84.7)	83.6 (83.5)
SEPTEMBER	9.2	10.2	11.7	10.4	11.8	12.8	88.5 (88.4)	86.3 (86.3)	91.4 (91.2)
OCTOBER	8.9	9.0	11.1	11.0	11.8	13.2	80.5 (80.3)	76.4 (76.4)	84.2 (84.1)
NOVEMBER	7.1	7.4	7.5	8.3	10.0	9.2	84.9 (84.4)	74.4 (74.4)	82.1 (82.0)
DECEMBER	5.0	5.1	5.7	7.6	10.6	9.3	66.2 (65.5)	48.0 (47.9)	61.3 (60.8)
TOTAL	90.1	97.4	106.6	119.0	126.5	138.1	75.7 (75.4)	77.0 (76.9)	77.2 (77.1)

Note: \* All load factors are calculated on the basis of actual figures. The total yearly figure has been rounded off from the actual figure and need not necessarily equal the sum of the rounded off monthly figures.

\*\* Revenue load factors exclude non-paying passengers and are also calculated on actual figures.

Table 3 (i): Departures by air to U. K. (Scheduled Flights) 2001

2001

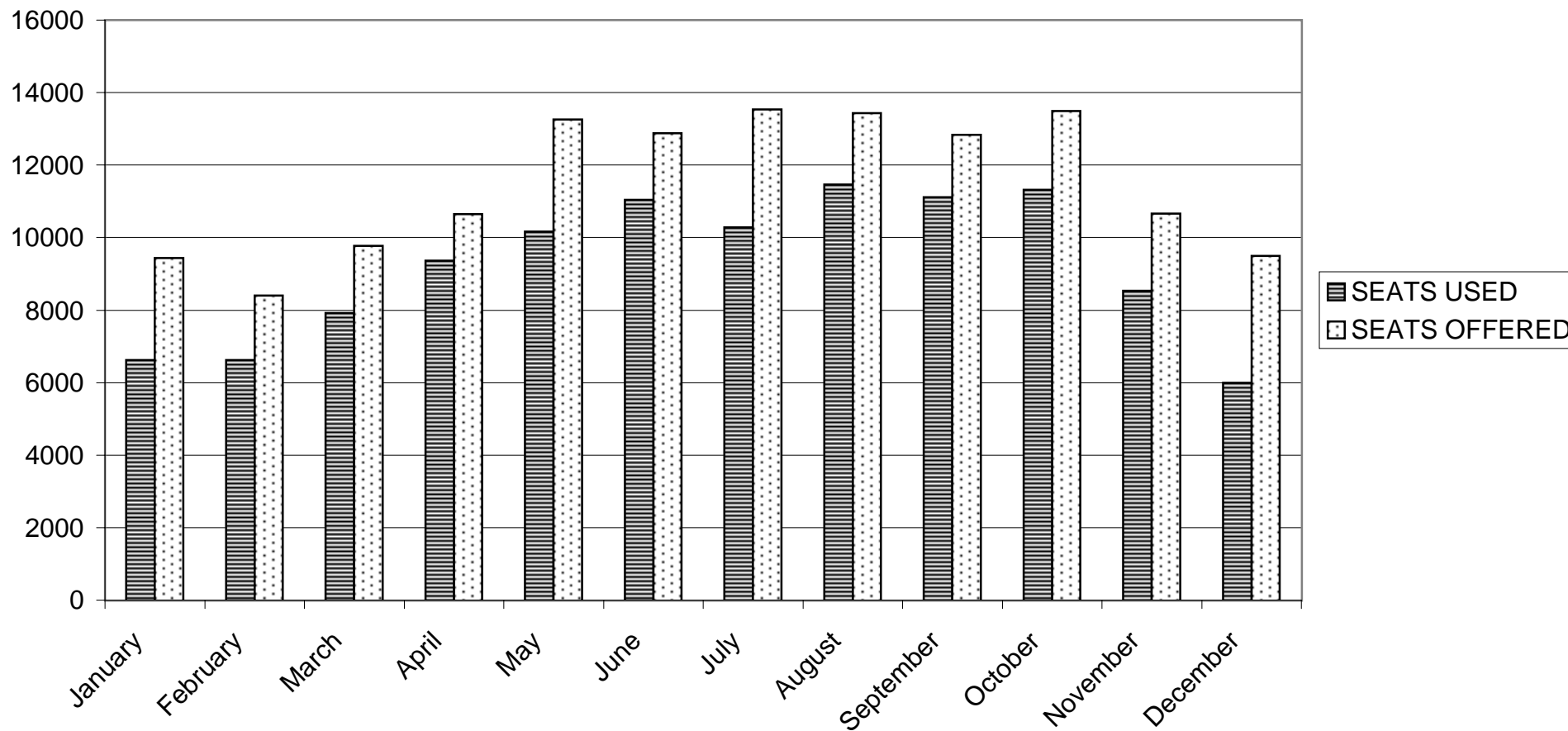
MONTH	SEATS USED (000's)	SEATS OFFERED (000's)	LOAD FACTOR %	
			(1)	(2)
January	6.6	9.4	70.2	70.2
February	6.6	8.4	78.9	78.9
March	7.9	9.8	81.0	81.0
April	9.4	10.6	87.9	87.9
May	10.2	13.3	76.7	76.7
June	11.0	12.9	85.7	85.7
July	10.3	13.5	76.0	76.0
August	11.5	13.4	85.4	85.4
September	11.1	12.8	86.6	86.6
October	11.3	13.5	83.9	83.9
November	8.5	10.7	79.9	79.9
December	6.0	9.5	63.2	63.2
TOTAL	110.5	137.9	80.1	80.1

Notes:

- (1) Load factors are calculated on the basis of actual figures and exclude visitors in transit. The total yearly figures have been rounded off from the actual figures and need not necessarily equal the sum of the rounded off monthly figures.
- (2) Revenue load factors exclude non-paying passengers from the Seats Used figures and are also calculated on the basis of actual figures.



## DEPARTURES BY AIR TO UK (SCHEDULED FLIGHTS) - 2001



## DEPARTURES BY AIR TO UK (SCHEDULED FLIGHTS) 2001

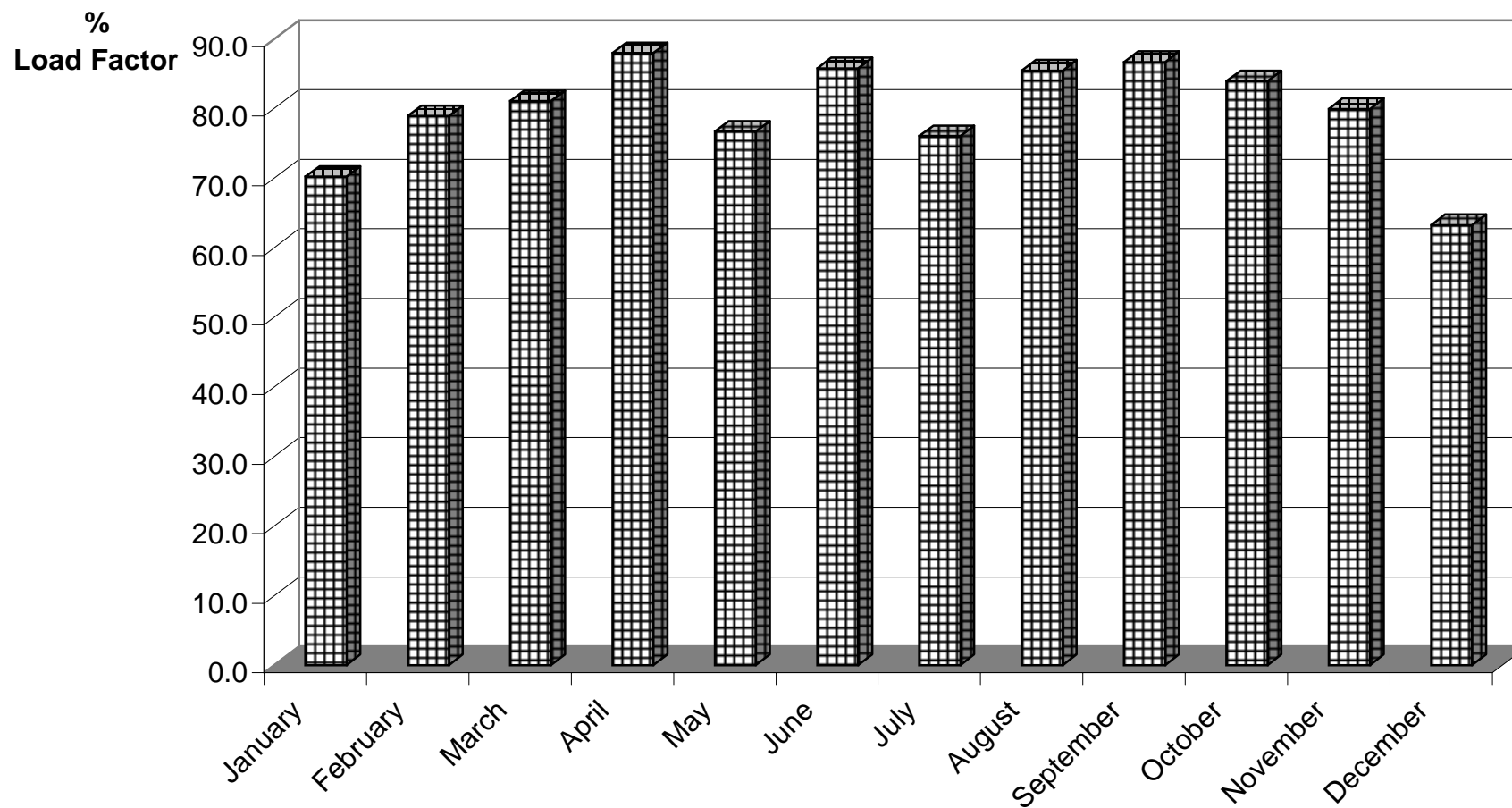


Table 4(a): Arrivals by air from U.K. (Charter Flights) 1981-1984 \*

MONTH	SEATS USED (000's)				SEATS OFFERED (000's)				LOAD FACTOR (%)			
	1981	1982	1983	1984	1981	1982	1983	1984	1981	1982	1983	1984
JANUARY	1.3	1.2	0.9	1.2	1.6	1.6	1.2	1.7	81.6	74.6	79.5	71.7
FEBRUARY	1.2	1.1	1.0	1.1	1.3	1.2	1.0	1.2	93.1	90.2	94.0	97.7
MARCH	1.6	1.4	1.2	1.8	1.7	1.4	1.2	1.9	94.3	97.3	94.7	92.7
APRIL	1.6	1.8	1.5	1.7	1.7	2.1	2.2	1.9	89.3	86.6	69.2	89.7
MAY	2.0	2.0	1.9	2.2	2.2	2.5	2.4	2.7	91.8	80.6	79.0	80.7
JUNE	2.4	2.0	1.8	2.2	2.6	2.6	2.2	2.7	91.3	79.5	82.7	82.0
JULY	2.1	3.0	2.5	3.1	2.3	3.2	2.8	3.4	89.8	91.4	87.5	91.0
AUGUST	2.5	2.4	2.3	2.6	2.9	3.1	2.5	2.7	88.6	76.2	93.4	94.1
SEPTEMBER	2.2	2.0	2.2	2.5	2.7	2.2	2.6	3.0	83.4	89.7	85.5	85.4
OCTOBER	2.0	1.4	1.7	2.2	3.1	1.9	2.7	2.9	64.5	76.0	63.8	76.6
NOVEMBER	1.5	1.1	1.5	1.4	2.3	1.3	2.0	1.6	65.8	84.9	74.9	89.3
DECEMBER	1.5	1.1	2.0	0.9	2.0	1.3	2.4	1.0	74.5	87.8	83.1	87.5
TOTAL	21.9	20.5	20.5	22.9	26.4	24.4	25.2	26.7	83.0	84.0	81.3	86.0

Notes: \* Regular charter operations commenced in April 1977. Figures exclude MoD charter flights.

\*\*The total yearly figures have been rounded off from the actual figures and need not necessarily equal the sum of the rounded off monthly figures.

Table 4(b): Arrivals by air from U.K. (Charter Flights) 1985-1988 \*

MONTH	SEATS USED (000's)				SEATS OFFERED (000's)				LOAD FACTOR (%)			
	1985	1986	1987	1988	1985	1986	1987	1988	1985	1986	1987	1988
JANUARY	0.7	-	2.3	1.6	0.9	-	2.5	1.7	82.5	-	92.2	93.4
FEBRUARY	1.0	0.1	1.5	1.5	1.0	0.1	1.6	1.6	99.9	90.8	97.1	97.5
MARCH	1.5	-	1.2	1.8	1.6	-	1.2	1.8	95.0	-	95.7	96.7
APRIL	1.7	-	1.6	1.2	1.8	-	1.6	1.4	92.9	-	97.6	80.5
MAY	2.0	0.8	0.1	0.6	2.3	1.0	0.2	0.7	88.1	83.8	61.9	90.2
JUNE	1.9	0.7	1.2	0.2	2.2	0.8	1.3	0.3	88.4	84.5	88.8	85.7
JULY	2.6	0.6	1.0	0.5	2.9	0.6	1.0	0.5	90.6	94.9	98.0	96.7
AUGUST	2.0	0.7	1.0	0.6	2.1	0.7	1.0	0.7	93.9	96.8	97.1	95.4
SEPTEMBER	2.4	0.6	1.3	0.5	2.5	0.6	1.3	0.6	93.1	95.4	98.4	74.3
OCTOBER	1.5	0.6	0.8	0.6	2.2	0.9	1.0	0.7	68.1	66.1	75.4	95.2
NOVEMBER	-	-	1.5	1.1	-	-	1.6	1.2	-	-	98.3	96.9
DECEMBER	-	-	1.6	1.5	-	-	1.7	1.7	-	-	96.0	86.5
TOTAL	17.3	4.1	15.1	11.7	19.5	4.8	16.0	12.9	88.9	84.1	94.4	90.7

Notes: \* Regular charter operations commenced in April 1977. Figures exclude MoD charter flights.

\*\*The total yearly figures have been rounded off from the actual figures and need not necessarily equal the sum of the rounded off monthly figures.

Table 4(c): Arrivals by air from U.K. (Charter Flights) 1989-1992 \*

MONTH	SEATS USED (000's)				SEATS OFFERED (000's)				LOAD FACTOR (%)			
	1989	1990	1991	1992	1989	1990	1991	1992	1989	1990	1991	1992
JANUARY	1.2	0.8	-	0.1	1.7	1.0	0.2	0.1	72.4	79.5	5.8	96.9
FEBRUARY	1.4	1.0	-	-	1.8	1.0	-	-	77.9	91.7	-	-
MARCH	0.4	1.3	0.1	-	0.4	1.3	0.1	-	84.7	96.9	90.2	-
APRIL	0.8	0.8	-	-	1.3	1.3	-	-	61.4	58.1	-	-
MAY	-	-	1.5	-	-	-	1.9	-	-	-	79.3	-
JUNE	-	-	1.8	-	-	-	2.5	-	-	-	74.2	-
JULY	-	0.3	2.1	0.1	-	0.4	2.4	0.1	-	90.8	89.0	93.3
AUGUST	-	0.2	2.7	-	-	0.3	3.1	-	-	65.1	87.6	-
SEPTEMBER	0.2	0.2	1.8	-	0.2	0.5	2.3	-	77.9	42.0	81.2	-
OCTOBER	-	-	1.0	-	0.1	-	1.8	-	-	-	57.0	-
NOVEMBER	0.8	0.2	-	-	1.2	0.5	0.1	-	66.0	52.6	6.1	-
DECEMBER	0.8	-	-	0.1	1.0	-	-	0.1	80.9	-	-	100.0
TOTAL	5.6	4.8	9.0	0.3	7.8	6.3	12.0	0.3	71.7	75.9	75.2	96.9

Notes: \* Regular charter operations commenced in April 1977. Figures exclude MoD charter flights.

\*\*The total yearly figures have been rounded off from the actual figures and need not necessarily equal the sum of the rounded off monthly figures.

Table 4(d): Arrivals by air from U.K. (Charter Flights) 1998 - 2000 \*

MONTH	SEATS USED (000's)			SEATS OFFERED (000's)			LOAD FACTOR (%)		
	1998	1999	2000	1998	1999	2000	1998	1999	2000
JANUARY	-	-	0.1	-	0.1	0.1	-	5.6	82.6
FEBRUARY	-	-	-	-	-	-	-	-	-
MARCH	-	0.2	-	-	0.2	-	-	82.5	-
APRIL	-	0.1	0.2	-	0.1	0.3	-	56.9	65.8
MAY	-	-	-	-	-	-	-	-	-
JUNE	-	-	-	-	-	-	-	-	-
JULY	-	-	-	-	-	-	-	-	-
AUGUST	-	-	-	-	-	0.1	-	-	94.0
SEPTEMBER	-	-	0.1	-	0.2	0.1	-	15.6	56.9
OCTOBER	-	0.1	-	0.1	0.2	-	58.0	46.1	-
NOVEMBER	0.7	-	0.1	0.7	-	0.2	99.3	-	34.4
DECEMBER	0.3	0.1	-	0.4	0.2	-	79.4	73.3	67.5
					-				
TOTAL	1.1	0.5	0.5	1.2	1.0	0.8	90.1	48.9	62.4

Notes: \* No charter operations were recorded during 1993 - 1997. Figures exclude MoD charter flights.

\*\*The total yearly figures have been rounded off from the actual figures and need not necessarily equal the sum of the rounded off figures.

Table 4 (e): Arrivals by Air (Charter Flights) 2001

2001

MONTH	SEATS USED (000's)	SEATS OFFERED (000's)	LOAD FACTOR (%)
January	0.0	0.0	100.0
February	0.0	0.0	0.0
March	0.0	0.0	100.0
April	0.1	0.3	42.4
May	0.0	0.0	0.0
June	0.0	0.0	0.0
July	0.0	0.0	0.0
August	0.0	0.0	0.0
September	0.0	0.0	0.0
October	0.0	0.0	55.1
November	0.0	0.0	0.0
December	0.0	0.0	0.0
TOTAL	0.2	0.4	50.9

Note: Load factors are calculated on the basis of actual figures and exclude visitors in transit. The total yearly figures have been rounded off from the actual figures and need not necessarily equal the sum of the rounded off monthly figures.

Table 5(a): Departures by air to U.K. (Charter Flights) 1981 -1984 \*

MONTH	SEATS USED (000's)				SEATS OFFERED (000's)				LOAD FACTOR (%) **			
	1981	1982	1983	1984	1981	1982	1983	1984	1981	1982	1983	1984
JANUARY	1.5	1.2	1.0	1.5	1.6	1.6	1.2	1.7	91.7	74.8	88.5	89.0
FEBRUARY	1.2	1.1	0.9	1.0	1.3	1.2	1.0	1.2	89.4	89.6	83.7	86.3
MARCH	1.5	1.4	1.2	1.8	1.7	1.4	1.2	1.9	89.9	96.9	97.0	93.0
APRIL	1.6	1.8	1.5	1.8	1.7	2.1	2.2	1.9	92.8	89.2	69.2	94.5
MAY	1.8	1.9	1.6	1.7	2.2	2.5	2.4	2.7	78.3	78.6	66.7	63.7
JUNE	2.4	2.1	1.9	2.2	2.6	2.5	2.2	2.7	92.8	82.1	83.7	83.0
JULY	2.0	2.6	2.3	3.0	2.3	3.2	2.8	3.4	87.1	80.4	83.2	86.5
AUGUST	2.6	2.7	2.3	2.7	2.9	3.1	2.5	2.7	90.5	86.3	93.2	98.3
SEPTEMBER	2.5	2.0	2.5	2.7	2.7	2.2	2.6	3.0	91.7	91.8	97.5	90.7
OCTOBER	2.6	1.8	2.3	2.7	3.1	1.9	2.7	2.9	84.4	97.1	83.1	95.5
NOVEMBER	1.9	1.2	1.5	1.5	2.4	1.3	2.0	1.6	80.4	90.1	74.9	93.3
DECEMBER	1.7	1.1	1.7	0.8	2.0	1.3	2.4	1.0	88.0	86.9	72.2	80.1
TOTAL	23.3	20.9	20.7	23.4	26.5	24.3	25.2	26.7	87.8	86.1	82.2	87.8

Notes: \* Regular charter operations commenced in April 1977. Figures exclude MoD charter flights.

\*\*The total yearly figures have been rounded off from the actual figures and need not necessarily equal the sum of the rounded off monthly figures.



Table 5(b): Departures by air to U.K. (Charter Flights) 1985 -1988 \*

MONTH	SEATS USED (000's)				SEATS OFFERED (000's)				LOAD FACTOR (%) **			
	1985	1986	1987	1988	1985	1986	1987	1988	1985	1986	1987	1988
JANUARY	0.7	-	2.2	1.6	0.9	-	2.5	1.7	85.0	-	89.0	94.2
FEBRUARY	0.9	0.1	1.5	1.5	1.0	0.1	1.6	1.6	89.7	90.8	95.0	94.4
MARCH	1.5	-	1.0	1.7	1.6	-	1.2	1.8	96.0	-	83.1	93.9
APRIL	1.7	-	0.8	1.4	1.8	-	1.6	1.4	96.0	-	51.7	96.0
MAY	1.7	0.6	0.0	0.6	2.3	1.0	0.2	0.7	72.6	61.8	32.3	91.2
JUNE	1.9	0.7	1.2	0.2	2.2	0.8	1.3	0.3	89.8	85.6	95.1	90.4
JULY	2.5	0.5	0.9	0.4	2.8	0.6	1.0	0.5	87.9	87.7	86.0	80.6
AUGUST	2.0	0.7	1.0	0.6	2.1	0.7	1.0	0.7	98.0	97.8	93.9	96.0
SEPTEMBER	2.5	0.6	1.3	0.6	2.5	0.6	1.3	0.6	97.5	97.8	98.6	91.8
OCTOBER	2.2	0.6	1.0	0.6	2.2	0.9	1.0	0.7	98.1	74.0	95.5	91.0
NOVEMBER	-	-	1.6	0.9	-	-	1.3	1.2	-	-	81.5	78.6
DECEMBER	-	-	1.6	1.3	-	-	1.7	1.7	-	-	95.5	79.5
TOTAL	17.6	4.0	14.1	11.4	19.4	4.9	15.8	12.9	91.2	81.5	89.8	88.4

Notes: \* Regular charter operations commenced in April 1977. Figures exclude MoD charter flights.

\*\*The total yearly figures have been rounded off from the actual figures and need not necessarily equal the sum of the rounded off monthly figures.

Table 5(c): Departures by air to U.K. (Charter Flights) 1989 -1992 \*

MONTH	SEATS USED (000's)				SEATS OFFERED (000's)				LOAD FACTOR (%) **			
	1989	1990	1991	1992	1989	1990	1991	1992	1989	1990	1991	1992
JANUARY	1.3	0.8	0.1	0.1	1.7	1.0	0.2	0.1	78.3	77.3	64.6	93.1
FEBRUARY	1.4	0.9	-	-	1.8	1.0	-	-	76.2	83.6	-	-
MARCH	0.3	1.2	0.1	-	0.4	1.3	0.1	-	79.1	93.2	84.8	-
APRIL	1.2	1.0	-	-	1.3	1.3	-	-	92.0	77.9	-	-
MAY	-	-	0.9	-	-	-	1.9	-	-	-	47.6	-
JUNE	-	-	1.8	-	-	-	2.5	-	-	-	74.2	-
JULY	-	0.2	1.8	0.1	-	0.4	2.4	0.1	-	60.8	74.9	93.3
AUGUST	-	0.2	2.9	-	-	0.3	3.0	-	-	62.4	94.2	-
SEPTEMBER	0.2	0.2	2.0	-	0.3	0.5	2.3	-	77.1	45.1	87.6	-
OCTOBER	0.1	-	1.6	-	0.1	-	2.0	-	67.2	-	78.6	-
NOVEMBER	0.6	0.2	0.2	-	1.2	0.5	0.3	-	47.7	53.2	88.1	-
DECEMBER	0.7	-	-	0.3	1.0	-	-	0.2	71.7	-	-	75.4
TOTAL	5.8	4.6	9.6	0.5	7.8	6.3	12.3	0.4	74.5	75.9	78.2	84.3

Notes: \* Regular charter operations commenced in April 1977. Figures exclude MoD charter flights.

\*\*The total yearly figures have been rounded off from the actual figures and need not necessarily equal the sum of the rounded off monthly figures.

Table 5(d): Departures by air to U.K. (Charter Flights) 1998 - 2000 \*,\*\*

MONTH	SEATS USED (000's)			SEATS OFFERED (000's)			LOAD FACTOR (%) **		
	1998	1999	2000	1998	1999	2000	1998	1999	2000
JANUARY	-	0.1	0.1	-	0.1	0.1	-	81.9	82.6
FEBRUARY	-	-	-	-	-	-	-	-	-
MARCH	-	0.1	-	-	0.2	-	-	54.1	-
APRIL	-	0.1	0.2	-	0.1	0.3	-	100.0	65.8
MAY	-	-	-	-	-	-	-	-	-
JUNE	-	-	-	-	-	-	-	-	-
JULY	-	-	-	-	-	-	-	-	-
AUGUST	-	-	-	-	-	0.1	-	-	94.0
SEPTEMBER	-	-	0.1	-	0.2	0.1	-	15.0	56.9
OCTOBER	-	0.1	-	0.1	0.2	-	46.0	54.4	-
NOVEMBER	0.6	-	0.1	0.7	-	0.2	88.1	-	34.4
DECEMBER	0.3	-	-	0.4	0.2	-	57.3	-	67.5
					-				
TOTAL	0.9	0.5	0.5	1.2	1.0	0.8	74.8	48.8	62.4

Notes: \* No charter operations were recorded during 1993 - 1997. Figures exclude MoD charter flights.

\*\*The total yearly figures have been rounded off from the actual figures and need not necessarily equal the sum of the rounded off monthly figures.

Table 5 (e): Departures by Air (Charter Flights) 2001

2001

MONTH	SEATS USED (000's)	SEATS OFFERED (000's)	LOAD FACTOR (%)
January	0.0	0.0	100.0
February	0.0	0.0	0.0
March	0.0	0.0	100.0
April	0.1	0.3	42.4
May	0.0	0.0	0.0
June	0.0	0.0	0.0
July	0.0	0.0	0.0
August	0.0	0.0	0.0
September	0.0	0.0	0.0
October	0.0	0.0	55.1
November	0.0	0.0	0.0
December	0.0	0.0	0.0
TOTAL	0.2	0.4	50.9

Note: Load factors are calculated on the basis of actual figures and exclude visitors in transit. The total yearly figures have been rounded off from the actual figures and need not necessarily equal the sum of the rounded off monthly figures.

Table 6(a): Arrivals by air from Morocco 1991-1994

MONTH	SEATS USED (000's)				SEATS OFFERED (000's)				LOAD FACTOR (%)			
	1991	1992	1993	1994	1991	1992	1993	1994	1991	1992	1993	1994
JANUARY	0.3	-	0.6	0.6	1.0	-	2.5	2.6	30.9	-	23.7	23.1
FEBRUARY	-	-	0.5	0.5	0.1	-	2.2	2.6	2.6	-	22.2	19.2
MARCH	-	-	0.6	0.5	0.5	-	2.6	2.7	4.9	-	21.4	17.5
APRIL	0.2	-	0.4	0.5	1.8	-	2.7	2.2	8.4	-	15.8	22.8
MAY	0.3	-	0.4	0.4	0.9	-	2.9	2.5	36.2	-	15.6	14.9
JUNE	-	-	0.3	0.3	-	-	2.3	2.2	-	-	14.9	13.0
JULY	-	-	0.5	0.4	-	-	2.4	2.0	-	-	22.1	20.3
AUGUST	-	-	0.6	0.5	-	-	1.7	1.5	-	-	38.1	30.3
SEPTEMBER	-	-	0.5	0.4	-	-	1.8	1.6	-	-	28.7	21.7
OCTOBER	-	0.5	0.7	0.4	-	0.7	2.2	2.1	-	71.8	32.8	18.7
NOVEMBER	-	0.4	0.5	0.4	-	2.5	2.5	3.2	-	15.6	21.0	11.4
DECEMBER	-	0.4	0.5	0.3	-	2.4	2.5	3.3	-	15.4	18.7	10.4
TOTAL	0.8	1.3	6.2	5.0	4.3	5.6	28.2	28.5	19.1	22.9	22.1	17.7

Table 6(b): Arrivals by air from Morocco 1995 -1998

MONTH	SEATS USED (000's)				SEATS OFFERED (000's)				LOAD FACTOR (%)			
	1995	1996	1997	1998	1995	1996	1997	1998	1995	1996	1997	1998
JANUARY	0.4	1.6	0.5	0.3	3.2	4.1	3.3	2.6	12.9	40.0	13.7	12.0
FEBRUARY	0.3	0.6	0.4	0.4	2.8	3.1	2.5	2.4	9.9	19.2	16.4	17.2
MARCH	0.4	1.0	0.5	0.4	2.9	3.0	2.9	2.2	14.0	33.3	17.4	19.4
APRIL	0.5	0.6	0.5	0.3	3.2	3.0	2.1	1.3	16.7	21.5	22.8	24.9
MAY	0.5	0.4	0.5	0.3	3.5	2.7	2.4	1.2	13.0	15.6	21.4	22.2
JUNE	0.4	0.5	0.4	0.2	3.5	2.8	2.3	1.2	12.3	19.0	15.7	17.0
JULY	0.4	0.8	0.4	0.2	2.9	2.8	2.6	1.1	13.9	27.1	13.9	21.6
AUGUST	0.6	0.8	0.5	0.2	2.9	2.2	1.8	0.9	22.1	34.8	28.1	25.2
SEPTEMBER	0.4	0.5	0.3	0.2	2.9	2.5	2.1	0.9	13.8	20.1	16.0	22.0
OCTOBER	0.4	0.5	0.4	0.3	3.0	2.8	2.4	1.5	12.4	16.9	18.6	16.8
NOVEMBER	0.7	0.6	0.5	0.1	3.2	2.8	2.6	0.9	20.8	22.3	21.2	8.2
DECEMBER	0.5	0.6	0.4	0.2	3.1	2.3	2.7	1.0	16.5	23.5	15.5	22.3
TOTAL	5.5	8.5	5.3	3.2	37.0	34.1	30.0	17.2	14.9	24.9	18.0	18.4

Table 6 (c): Arrivals by air from Morocco (Scheduled Flights), 1999-2000

MONTH	SEATS USED (000's)		SEATS OFFERED (000's)		LOAD FACTOR (%)	
	1999	2000	1999	2000	1999	2000
January	0.0	0.0	0.9	0.5	4.5	7.7
February	0.1	0.1	0.8	0.5	6.9	14.9
March	0.1	0.1	0.5	0.5	26.9	16.0
April	0.0	0.1	0.0	0.4	0.0	15.3
May	0.0	0.1	0.0	0.5	0.0	14.8
June	0.0	0.1	0.0	0.5	0.0	15.4
July	0.0	0.0	0.0	0.2	0.0	15.1
August	0.0	0.0	0.0	0.0	0.0	0.0
September	0.0	0.0	0.0	0.0	0.0	0.0
October	0.0	0.0	0.0	0.0	0.0	0.0
November	0.1	0.0	0.4	0.0	18.9	0.0
December	0.0	0.0	0.5	0.0	9.5	0.0
TOTAL	0.4	0.4	3.1	3.0	11.5	14.0

Note:

Load factors are calculated on the basis of actual figures and exclude visitors in transit. No flights were recorded arriving from Morocco for 2001.

Table 7(a): Departures by air to Morocco 1991-1994

MONTH	SEATS USED (000's)				SEATS OFFERED (000's)				LOAD FACTOR (%)			
	1991	1992	1993	1994	1991	1992	1993	1994	1991	1992	1993	1994
JANUARY	0.3	-	0.7	0.7	1.1	-	2.6	2.7	28.7	-	26.5	25.5
FEBRUARY	-	-	0.7	0.4	0.1	-	2.3	2.5	4.3	-	32.0	17.9
MARCH	-	-	0.6	0.7	0.6	-	2.6	2.7	6.8	-	22.5	25.7
APRIL	0.1	-	0.6	0.5	0.9	-	3.0	2.4	9.6	-	21.5	19.7
MAY	0.3	-	0.6	0.4	0.9	-	2.9	2.6	35.7	-	22.7	14.7
JUNE	-	-	0.6	0.3	-	-	2.4	2.3	-	-	23.7	12.7
JULY	-	-	0.8	0.4	-	-	1.9	1.6	-	-	39.2	26.6
AUGUST	-	-	0.9	0.6	-	-	1.9	1.8	-	-	46.0	30.8
SEPTEMBER	-	-	0.7	0.3	-	-	2.0	1.8	-	-	37.0	18.9
OCTOBER	-	0.1	0.9	0.5	-	0.5	2.3	2.2	-	17.6	39.3	21.5
NOVEMBER	-	0.4	0.6	0.5	-	2.6	2.7	3.4	-	16.5	21.8	13.5
DECEMBER	-	0.5	0.6	0.4	-	2.4	2.5	3.3	-	22.2	21.8	19.3
TOTAL	0.8	1.1	8.3	5.7	3.6	5.6	29.1	29.3	21.6	19.1	28.4	19.3



Table 7(b): Departures by air to Morocco 1995 -1998

MONTH	SEATS USED (000's)				SEATS OFFERED (000's)				LOAD FACTOR (%) *			
	1995	1996	1997	1998	1995	1996	1997	1998	1995	1996	1997	1998
JANUARY	0.4	0.7	0.4	0.2	3.4	3.2	3.1	3.1	11.3 (10.9)	21.5 (21.3)	13.0 (13.0)	10.2 (9.9)
FEBRUARY	0.3	0.8	0.4	0.5	2.8	2.7	2.4	2.4	9.6 (9.5)	30.0 (30.0)	17.7 (17.1)	22.0 (21.6)
MARCH	0.5	0.9	0.4	0.3	3.2	3.0	2.9	2.9	16.5 (16.3)	30.5 (30.4)	14.6 (13.6)	14.5 (14.0)
APRIL	0.5	0.6	0.4	0.3	3.0	2.8	2.1	2.1	17.0 (17.0)	20.6 (20.6)	20.1 (19.4)	27.4 (27.0)
MAY	0.7	0.6	0.5	0.2	3.8	3.0	2.7	2.7	18.2 (17.7)	21.1 (21.1)	16.9 (16.3)	16.0 (15.9)
JUNE	0.6	0.6	0.3	0.2	3.6	3.0	2.3	2.3	16.8 (16.2)	20.7 (20.4)	14.0 (13.3)	11.9 (11.8)
JULY	0.4	0.8	0.4	0.2	2.7	2.8	2.4	2.4	13.6 (13.5)	28.7 (28.5)	18.5 (17.9)	12.9 (12.7)
AUGUST	0.5	0.7	0.5	0.2	2.7	2.4	2.2	2.2	18.1 (17.9)	28.9 (28.9)	24.1 (23.6)	15.3 (15.2)
SEPTEMBER	0.7	0.6	0.4	0.2	2.8	2.6	2.5	2.5	24.9 (24.1)	24.7 (24.5)	16.6 (16.1)	18.2 (18.2)
OCTOBER	0.6	0.6	0.4	0.2	3.2	3.0	2.1	2.1	18.2 (17.3)	19.4 (19.1)	18.0 (17.4)	12.4 (12.3)
NOVEMBER	0.6	0.9	0.3	0.1	3.3	2.9	2.3	2.3	17.6 (17.2)	31.4 (31.4)	13.6 (13.2)	9.5 (9.3)
DECEMBER	0.6	0.6	0.4	0.2	2.9	3.0	2.5	2.5	19.0 (18.7)	20.7 (20.7)	14.8 (14.4)	15.8 (15.8)
TOTAL	6.2	8.4	4.9	4.9	37.4	34.4	29.5	29.5	16.7 (16.3)	24.7 (24.6)	16.6 (16.2)	15.2 (15.0)

Note: \* Figures show both passenger and revenue load factors. The latter is derived by excluding non-paying passengers from the "seats" column. All load factors are calculated on the basis of actual figures.

Table 7 (c): Departures by air to Morocco (Scheduled Flights), 1999-2000

MONTH	SEATS USED (000's)		SEATS OFFERED (000's)		LOAD FACTOR (%)			
	1999	2000	1999	2000	1999	1999*	2000	2000*
January	0.1	0.1	0.8	0.5	8.3	8.0	13.4	13.4
February	0.1	0.1	0.8	0.5	15.3	15.1	18.4	18.4
March	0.1	0.1	0.5	0.5	11.2	10.6	17.4	17.4
April	0.0	0.1	0.0	0.4	0.0	0.0	17.1	17.1
May	0.0	0.1	0.0	0.5	0.0	0.0	10.5	10.5
June	0.0	0.1	0.0	0.5	0.0	0.0	14.4	14.4
July	0.0	0.0	0.0	0.2	0.0	0.0	16.4	16.4
August	0.0	0.0	0.0	0.0	0.0	0.0	0.0	0.0
September	0.0	0.0	0.0	0.0	0.0	0.0	0.0	0.0
October	0.0	0.0	0.0	0.0	0.0	0.0	0.0	0.0
November	0.1	0.0	0.4	0.0	13.6	13.6	0.0	0.0
December	0.0	0.0	0.5	0.0	8.0	8.0	0.0	0.0
TOTAL	0.3	0.5	2.9	3.0	11.4	11.2	15.1	15.1

Note: (1) Passenger load factors are calculated on the basis of actual figures and exclude visitors in transit.

(2) Revenue load factors exclude non-paying passengers from the Seats Used figures and are also calculated on the basis of actual figures.

(3) No flights departing to Morocco were recorded for 2001.

Table 8: Commercial Freight, Set Down/Picked Up, Gibraltar 1974 -2001

(000's kgs)

YEAR	SET DOWN	PICKED UP
1974	1881	134
1975	1701	119
1976	1721	125
1977	1089	87
1978	927	62
1979	896	61
1980	447	38
1981	318	64
1982	481	44
1983	381	38
1984	333	36
1985	419	40
1986	523	59
1987	499	67
1988	599	40
1989	648	45
1990	797	95
1991	596	54
1992	476	64
1993	597	74
1994	518	49
1995	504	52
1996	406	58
1997	330	57
1998	406	69
1999	433	77
2000	419	74
2001	306	71

Note: Relates to freight from/to all destinations.

# COMMERCIAL FREIGHT 1980 - 2001

