



GOVERNMENT OF GIBRALTAR

AIR TRAFFIC SURVEY

1999

**ADMINISTRATION & STATISTICS
DIVISION (DTI)**

- CONTENTS -

A. B. C.	Preface Definitions Tables	<u>PAGE</u> 1 2 3-44
<u>LIST OF TABLES</u>		
Table 1:	Arrivals/Departures by air from/to U.K. 1975-1999	3
Chart	Arrivals by Air from U.K. 1975-1999	4
Table 2: (a)	Arrivals by air from U.K. (Scheduled flights) 1975-78	5
Table 2: (b)	Arrivals by air from U.K. (Scheduled flights) 1979-82	6
Table 2: (c)	Arrivals by air from U.K. (Scheduled flights) 1983-86	7
Table 2: (d)	Arrivals by air from U.K. (Scheduled flights) 1987-90	8
Table 2: (e)	Arrivals by air from U.K. (Scheduled flights) 1991-94	9
Table 2: (f)	Arrivals by air from U.K. (Scheduled flights) 1995-98	10
Table 2: (g)	Arrivals by air from U.K. (Scheduled flights) 1999	11
Chart	Air Arrivals from U.K. (Scheduled flights) 1999	12
Chart	Arrivals by air from U.K. (Scheduled flights) 1999	13
Table 3: (a)	Departures by air to U.K. (Scheduled flights) 1975-77	14
Table 3: (b)	Departures by air to U.K. (Scheduled flights) 1978-80	15
Table 3: (c)	Departures by air to U.K. (Scheduled flights) 1981-83	16
Table 3: (d)	Departures by air to U.K. (Scheduled flights) 1984-86	17
Table 3: (e)	Departures by air to U.K. (Scheduled flights) 1987-89	18
Table 3: (f)	Departures by air to U.K. (Scheduled flights) 1990-92	19
Table 3: (g)	Departures by air to U.K. (Scheduled flights) 1993-95	20
Table 3: (h)	Departures by air to U.K. (Scheduled flights) 1996-98	21
Table 3: (i)	Departures by air to U.K. (Scheduled flights) 1999	22
Chart	Departures by air to U.K. (Scheduled flights) 1999	23
Chart	Departures by air to U.K. (Scheduled flights) 1999	24
Table 4: (a)	Arrivals by air from U.K. (Charter flights) 1979-1982	25
Table 4: (b)	Arrivals by air from U.K. (Charter flights) 1983-1986	26
Table 4: (c)	Arrivals by air from U.K. (Charter flights) 1987-1990	27
Table 4: (d)	Arrivals by air from U.K. (Charter flights) 1991, 92 & 1998	28
Table 4: (e)	Arrivals by air (Charter flights) 1999	29
Table 5: (a)	Departures by air to U.K. (Charter flights) 1979-1982	30
Table 5: (b)	Departures by air to U.K. (Charter flights) 1983-1986	31
Table 5: (c)	Departures by air to U.K. (Charter flights) 1987-1990	32
Table 5: (d)	Departures by air to U.K. (Charter flights) 1991, 92 & 98	33
Table 5: (e)	Departures by air (Charter flights) 1999	34
Table 6: (a)	Arrivals by air from Morocco 1990-1993	35
Table 6: (b)	Arrivals by air from Morocco 1994-1997	36
Table 6: (c)	Arrivals by air from Morocco (Scheduled flights) 1998-99	37
Chart	Arrivals by air from Morocco (Scheduled flights) 1998-99	38
Table 7: (a)	Departures by air to Morocco 1990-1993	39
Table 7: (b)	Departures by air to Morocco 1994-1997	40
Table 7: (c)	Departures by air to Morocco (Scheduled flights) 1998-99	41
Chart	Departures by air to Morocco (Scheduled flights) 1998-99	42
Table 8	Commercial freight, Set down/picked up, Gibraltar 1973-1999	43
Chart	Commercial freight 1974-1999	44

A. PREFACE

The Statistics (Air Traffic Survey) Order 1971 requires that a report and summary of the findings of the Air Traffic Survey be laid before the House of Assembly. This is the twenty-fifth report and contains a summary of statistics collected for the years 1974 to 1999.

The report contains statistical data on air traffic operations between Gibraltar and other destinations for both scheduled and charter airlines. The report also includes some general data on commercial freight.

I must express my thanks to the Airlines and to Terminal Management Ltd for their continued co-operation in the conduct of this Survey.

MARCH 2000

GOVERNMENT STATISTICIAN

B. DEFINITIONS

(a) Passenger Load Factor: $\frac{\text{All seats used}}{\text{All seats offered (less in-transits)}} \times 100$

(b) Revenue Load Factor: $\frac{\text{All seats used by "paying" passengers}}{\text{All seats offered (less in-transits)}} \times 100$

(c) Scheduled Services: are those performed according to a published timetable including those supplementary thereto, and available for use by members of the public.

(d) Charter Services: includes all air passengers transport flights, other than scheduled services and Ministry of Defence Charters.

Table 1: Arrivals/Departures by Air from/to UK 1975 -1999

YEAR	ARRIVALS (000's)						DEPARTURES (000's)					
	TOTAL		SCHEDULED		CHARTER		TOTAL		SCHEDULED		CHARTER	
	Seats Offered	Seats Used	Seats Offered	Seats Used	Seats Offered	Seats Used	Seats Offered	Seats Used	Seats Offered	Seats Used	Seats Offered	Seats Used
1975	58.4	44.0	58.4	44.0	0.0	0.0	53.9	44.3	53.9	44.3	0.0	0.0
1976	50.3	37.1	50.3	37.1	0.0	0.0	48.0	37.3	48.0	37.3	0.0	0.0
1977	43.0	34.4	37.1	29.4	5.9	5.4	41.5	35.2	41.5	35.2	5.9	5.1
1978	49.3	42.2	34.0	29.4	15.3	12.8	48.9	42.9	48.9	42.9	15.3	13.1
1979	62.5	50.0	36.2	27.6	26.4	22.4	62.0	49.9	62.0	49.9	26.4	22.6
1980	62.8	50.0	30.2	22.9	32.7	27.1	62.7	50.9	62.7	50.9	32.7	27.8
1981	55.6	45.5	29.2	23.6	26.4	21.9	55.7	46.7	55.7	46.7	26.5	23.3
1982	60.0	47.5	35.6	27.0	24.4	20.5	60.0	47.6	60.0	47.6	24.3	20.9
1983	65.6	46.7	40.4	26.3	25.2	20.5	65.6	47.5	65.6	47.5	25.2	20.7
1984	61.3	50.3	34.6	27.4	26.7	22.9	61.2	51.0	61.2	51.0	26.7	23.4
1985	79.0	67.6	59.5	50.3	19.5	17.3	79.0	67.7	79.0	67.7	19.3	17.7
1986	101.7	83.2	96.9	79.1	4.8	4.1	101.8	84.1	101.8	84.1	4.9	4.0
1987	145.9	113.2	129.8	98.1	16.1	15.1	145.4	114.8	145.4	114.8	16.1	13.9
1988	208.7	151.2	196.0	139.6	12.7	11.6	208.3	156.1	208.3	156.1	12.7	11.5
1989	239.4	173.2	231.6	167.6	7.8	5.6	237.8	179.8	237.8	179.8	7.8	5.8
1990	172.0	141.5	165.8	136.8	6.2	4.7	175.1	148.5	175.1	148.5	6.2	4.7
1991	138.1	104.0	126.0	94.9	12.1	9.1	140.2	106.3	140.2	106.3	12.4	9.7
1992	127.4	98.1	127.0	97.7	0.4	0.4	128.2	101.0	128.2	101.0	0.5	0.4
1993	111.5	91.3	111.4	91.2	0.1	0.1	112.2	93.3	112.2	93.3	0.0	0.0
1994	106.4	85.2	106.4	85.2	0.0	0.0	107.1	86.9	107.1	86.9	0.0	0.0
1995	109.4	83.8	109.4	83.8	0.0	0.0	109.5	85.3	109.5	85.3	0.0	0.0
1996	98.7	78.1	98.7	78.1	0.0	0.0	98.1	78.2	98.1	78.2	0.0	0.0
1997	106.6	83.2	106.6	83.2	0.0	0.0	104.4	81.5	104.4	81.5	0.0	0.0
1998	121.5	83.2	106.6	83.2	0.0	0.0	120.2	91.0	120.2	91.0	1.2	0.9
1999	127.5	98.3	126.5	97.8	1.0	0.5	127.5	97.9	127.5	97.9	1.0	0.5

Note: Charter flights as from 1998 include all destinations.

Table 2(a): Arrivals by air from U.K. (Scheduled Flights) 1975-1978

MONTH	SEATS USED (000's)				SEATS OFFERED (000's)				LOAD FACTOR (%) (1)			
	1975	1976	1977	1978	1975	1976	1977	1978	1975	1976	1977	1978
JANUARY	3.0	2.2	2.0	1.9	4.3	4.0	3.3	2.6	70.3	63.7	58.0	71.2
FEBRUARY	2.9	2.0	2.1	1.7	3.7	3.3	2.6	2.3	77.5	55.5	80.6	75.5
MARCH	3.8	3.0	2.9	2.5	4.3	3.7	3.3	2.7	87.3	61.0	88.1	94.1
APRIL	2.9	3.0	1.5	2.4	4.5	4.5	2.2	2.9	64.9	68.1	68.4	84.7
MAY	4.1	3.4	2.2	2.5	5.6	4.5	3.0	2.8	72.9	77.3	73.0	89.0
JUNE	4.0	3.0	2.7	2.8	5.4	4.4	3.6	2.9	74.2	70.0	75.7	95.4
JULY	5.4	4.9	3.5	3.3	6.1	5.4	3.8	3.3	88.7	83.7	93.2	99.8
AUGUST	5.3	4.2	3.3	3.1	6.5	5.0	3.6	3.4	81.2	84.4	91.2	92.0
SEPTEMBER	4.2	3.6	2.7	2.8	5.7	5.0	3.4	3.1	75.0	69.7	80.2	90.8
OCTOBER	3.6	3.2	2.5	2.5	5.0	4.5	3.0	2.7	72.5	72.3	83.7	90.5
NOVEMBER	2.6	2.4	1.8	1.9	3.8	3.0	2.6	2.5	67.6	82.3	71.2	77.2
DECEMBER	2.2	2.2	2.2	2.0	3.5	3.0	2.7	2.8	63.7	74.3	80.1	68.7
TOTAL	44.0	37.1	29.4	29.4	58.4	50.3	37.1	34.0	75.4	73.6	79.3	86.4

Note: (1) All load factors are calculated on the basis of actual figures.

Table 2(b): Arrivals by air from U.K. (Scheduled Flights) 1979 -1982

MONTH	SEATS USED (000's)				SEATS OFFERED (000's)				LOAD FACTOR (%) (1)			
	1979	1980	1981	1982	1979	1980	1981	1982	1979	1980	1981	1982
JANUARY	1.6	1.6	1.5	1.7	2.6	2.8	2.1	2.2	62.6	57.3	70.6	78.2
FEBRUARY	1.5	1.5	1.5	1.8	2.3	2.7	1.9	2.2	65.1	57.8	81.1	77.5
MARCH	2.4	2.3	1.9	2.0	2.7	2.8	2.2	2.1	88.7	83.6	88.2	95.9
APRIL	2.5	1.7	2.2	2.8	3.2	2.4	2.7	3.2	77.7	70.3	79.3	86.7
MAY	2.6	2.0	1.9	2.3	3.4	2.5	2.7	3.2	76.6	79.2	67.7	72.4
JUNE	2.3	2.0	1.9	2.3	3.3	2.4	2.6	3.3	70.5	81.1	72.5	70.9
JULY	3.0	2.5	2.4	2.7	3.1	2.8	2.8	3.5	93.7	89.4	85.5	77.8
AUGUST	3.0	2.4	2.4	2.8	3.4	2.7	2.6	3.3	89.9	91.1	93.3	82.4
SEPTEMBER	2.6	1.7	1.9	2.4	3.4	2.5	2.7	3.4	76.9	67.4	71.9	70.8
OCTOBER	2.7	2.3	2.3	2.3	3.4	2.8	2.7	3.4	79.1	81.3	85.2	69.0
NOVEMBER	1.6	1.3	1.8	1.9	2.7	1.9	2.1	2.9	58.8	70.7	85.0	65.2
DECEMBER	1.8	1.6	1.9	2.0	2.7	1.9	2.1	2.9	66.3	82.6	91.4	70.5
TOTAL	27.6	22.9	23.6	27.0	36.2	30.2	29.2	35.6	76.2	76.0	80.7	75.9

Note: (1) All load factors are calculated on the basis of actual figures.

Table 2(c): Arrivals by air from U.K. (Scheduled Flights) 1983 - 1986

MONTH	SEATS USED (000's)					SEATS OFFERED (000's)					LOAD FACTOR (%) (1)					
	1983	1984	1985	1986	1983	1984	1985	1986	1983	1984	1985	1986	1983	1984	1985	1986
JANUARY	1.6	1.5	2.1	4.1	2.9	2.6	2.6	7.0	55.0	59.8	79.1	58.6	55.0	59.8	79.1	58.6
FEBRUARY	1.5	1.7	2.0	4.4	2.6	2.1	2.2	5.9	59.0	81.8	90.9	75.2	59.0	81.8	90.9	75.2
MARCH	2.1	2.1	3.0	6.5	3.0	2.4	3.2	7.1	70.3	87.2	97.0	92.2	70.3	87.2	97.0	92.2
APRIL	2.3	2.5	3.9	5.6	3.9	3.1	4.6	7.2	59.2	79.2	84.8	77.4	59.2	79.2	84.8	77.4
MAY	2.2	2.3	3.9	7.4	4.0	3.2	4.4	8.7	55.4	70.1	89.5	84.8	55.4	70.1	89.5	84.8
JUNE	2.4	2.2	4.3	7.1	3.9	3.3	5.0	8.5	60.3	68.9	86.4	83.2	60.3	68.9	86.4	83.2
JULY	3.0	2.9	5.4	8.3	4.0	3.4	5.7	9.0	74.4	86.1	95.2	92.2	74.4	86.1	95.2	92.2
AUGUST	2.8	2.8	5.8	8.7	4.0	3.2	6.5	9.8	70.5	86.7	89.2	88.2	70.5	86.7	89.2	88.2
SEPTEMBER	2.7	2.5	4.7	7.6	3.9	3.2	5.8	8.9	68.0	76.4	79.8	85.0	68.0	76.4	79.8	85.0
OCTOBER	2.3	2.6	5.1	7.8	3.6	3.2	5.8	9.1	63.0	79.3	86.7	85.4	63.0	79.3	86.7	85.4
NOVEMBER	1.6	2.0	4.6	5.1	2.2	2.4	6.3	7.4	71.1	85.0	73.4	69.4	71.1	85.0	73.4	69.4
DECEMBER	1.8	2.3	5.5	6.5	2.4	2.5	7.4	8.2	77.1	90.1	74.1	78.6	77.1	90.1	74.1	78.6
TOTAL	26.3	27.4	50.3	79.1	40.4	34.6	59.5	96.9	65.0	79.0	84.5	81.6	65.0	79.0	84.5	81.6

Note: (1) All load factors are calculated on the basis of actual figures.

Table 2(d): Arrivals by air from U.K. (Scheduled Flights) 1987-1990

MONTH	SEATS USED (000's)				SEATS OFFERED (000's)				LOAD FACTOR (%) (1)			
	1987	1988	1989	1990	1987	1988	1989	1990	1987	1988	1989	1990
JANUARY	4.7	7.0	9.7	10.0	7.8	12.7	18.0	15.1	60.3	55.2	53.9	66.3
FEBRUARY	5.0	8.4	10.4	10.6	6.6	11.3	14.4	13.1	76.2	74.9	72.4	81.1
MARCH	7.0	10.6	13.6	12.9	8.6	13.1	17.8	14.8	81.9	81.2	76.3	87.1
APRIL	7.6	10.4	11.9	11.6	8.4	14.2	17.6	14.2	90.0	73.7	67.7	82.2
MAY	9.0	13.1	14.9	12.2	11.4	17.2	19.3	13.8	79.3	76.3	77.2	88.1
JUNE	8.1	11.9	14.7	12.1	12.0	16.2	19.8	13.7	67.7	73.6	74.3	88.3
JULY	10.6	15.5	20.3	13.9	12.4	19.5	24.8	14.6	85.3	79.7	81.8	95.5
AUGUST	10.7	14.6	18.5	12.5	12.4	18.1	24.4	14.3	85.9	80.7	75.8	87.2
SEPTEMBER	8.7	14.0	16.5	12.3	11.6	18.0	22.2	13.9	74.8	77.9	74.3	88.5
OCTOBER	9.8	14.1	16.3	11.5	12.4	18.4	22.5	14.5	79.4	76.7	72.1	79.2
NOVEMBER	7.7	8.9	9.9	8.4	13.0	14.7	15.5	11.6	59.4	60.2	63.7	72.2
DECEMBER	8.7	10.9	10.9	8.8	12.9	16.3	15.3	12.1	67.4	67.3	71.5	72.3
TOTAL	97.6	139.4	167.6	136.8	129.5	189.7	231.6	165.6	75.2	73.5	72.4	82.5

Note: (1) All load factors are calculated on the basis of actual figures.

Table 2(e): Arrivals by air from U.K. (Scheduled Flights) 1991-1994

MONTH	SEATS USED (000's)				SEATS OFFERED (000's)				LOAD FACTOR (%) (1)			
	1991	1992	1993	1994	1991	1992	1993	1994	1991	1992	1993	1994
JANUARY	7.3	6.2	5.7	5.1	12.2	10.0	7.4	7.1	59.3	61.2	77.9	71.3
FEBRUARY	6.8	6.2	5.5	5.0	10.4	8.7	6.1	5.9	65.9	71.0	90.7	83.5
MARCH	7.4	7.7	7.1	6.9	9.2	9.2	7.5	7.4	81.3	83.0	95.9	93.8
APRIL	6.7	9.1	8.2	6.7	7.9	12.8	10.2	9.4	84.1	71.1	79.9	71.0
MAY	7.5	9.3	8.6	8.3	8.3	12.5	11.1	9.9	90.7	74.1	76.7	83.2
JUNE	7.9	9.6	8.6	8.3	9.5	12.0	11.1	10.6	83.5	79.8	77.7	79.0
JULY	10.8	11.5	10.1	9.6	12.3	12.5	10.9	10.8	88.1	92.2	92.3	89.0
AUGUST	9.7	9.8	8.8	8.4	11.9	12.6	11.0	11.2	81.3	77.4	79.9	75.4
SEPTEMBER	9.0	6.9	8.7	8.3	11.5	8.3	10.7	10.2	78.1	82.9	81.5	80.8
OCTOBER	8.6	9.0	7.9	7.5	11.7	11.9	11.2	9.8	74.0	75.6	70.5	76.3
NOVEMBER	6.7	6.6	6.1	5.3	11.1	8.8	7.3	6.9	60.4	74.7	84.0	76.3
DECEMBER	6.5	6.0	5.8	5.9	10.2	7.5	6.9	7.2	63.4	79.5	84.8	82.4
TOTAL	94.9	97.7	91.2	85.2	126.0	127.0	111.4	106.4	75.3	76.9	81.9	80.0

Note: (1) All load factors are calculated on the basis of actual figures.

Table 2(f): Arrivals by air from U.K. (Scheduled Flights) 1995-1998

MONTH	SEATS USED (000's)				SEATS OFFERED (000's)				LOAD FACTOR (%) (1)			
	1995	1996	1997	1998	1995	1996	1997	1998	1995	1996	1997	1998
JANUARY	4.1	4.6	4.6	4.8	7.8	7.7	7.9	9.4	53.0	53.9	57.8	51.1
FEBRUARY	5.6	5.5	5.2	6.0	6.6	7.7	6.3	9.0	84.2	68.9	83.0	66.4
MARCH	7.3	7.0	6.1	7.6	7.8	8.4	6.9	9.8	93.8	83.7	87.4	7.8
APRIL	7.7	6.3	5.4	7.8	10.1	8.5	6.6	10.0	76.0	74.3	82.3	77.9
MAY	8.1	7.7	8.6	9.0	10.3	9.0	9.9	11.4	78.1	86.4	86.4	79.0
JUNE	7.6	7.5	7.6	8.0	9.8	8.7	9.4	10.9	77.0	85.6	80.2	73.6
JULY	8.8	7.6	8.6	9.3	10.3	8.4	9.5	10.6	85.8	90.7	90.8	87.3
AUGUST	7.8	6.6	8.3	9.2	10.1	7.5	10.0	11.2	77.7	87.8	83.4	82.2
SEPTEMBER	7.2	7.2	8.1	8.4	9.3	8.4	10.7	10.7	77.7	86.4	75.6	78.0
OCTOBER	7.3	6.6	8.5	8.2	10.0	8.5	10.4	11.2	73.7	78.3	81.1	73.1
NOVEMBER	5.8	5.8	5.9	6.5	8.4	7.8	9.2	8.4	69.5	74.5	63.7	78.0
DECEMBER	6.5	5.7	6.4	6.3	8.9	8.1	9.8	7.9	73.8	70.7	65.8	79.7
TOTAL	83.8	78.1	83.2	91.0	109.4	98.7	106.6	120.4	76.7	79.1	78.0	75.6

Note: (1) All load factors are calculated on the basis of actual figures.

Table 2 (g): Arrivals by air from U. K. (Scheduled Flights) 1999

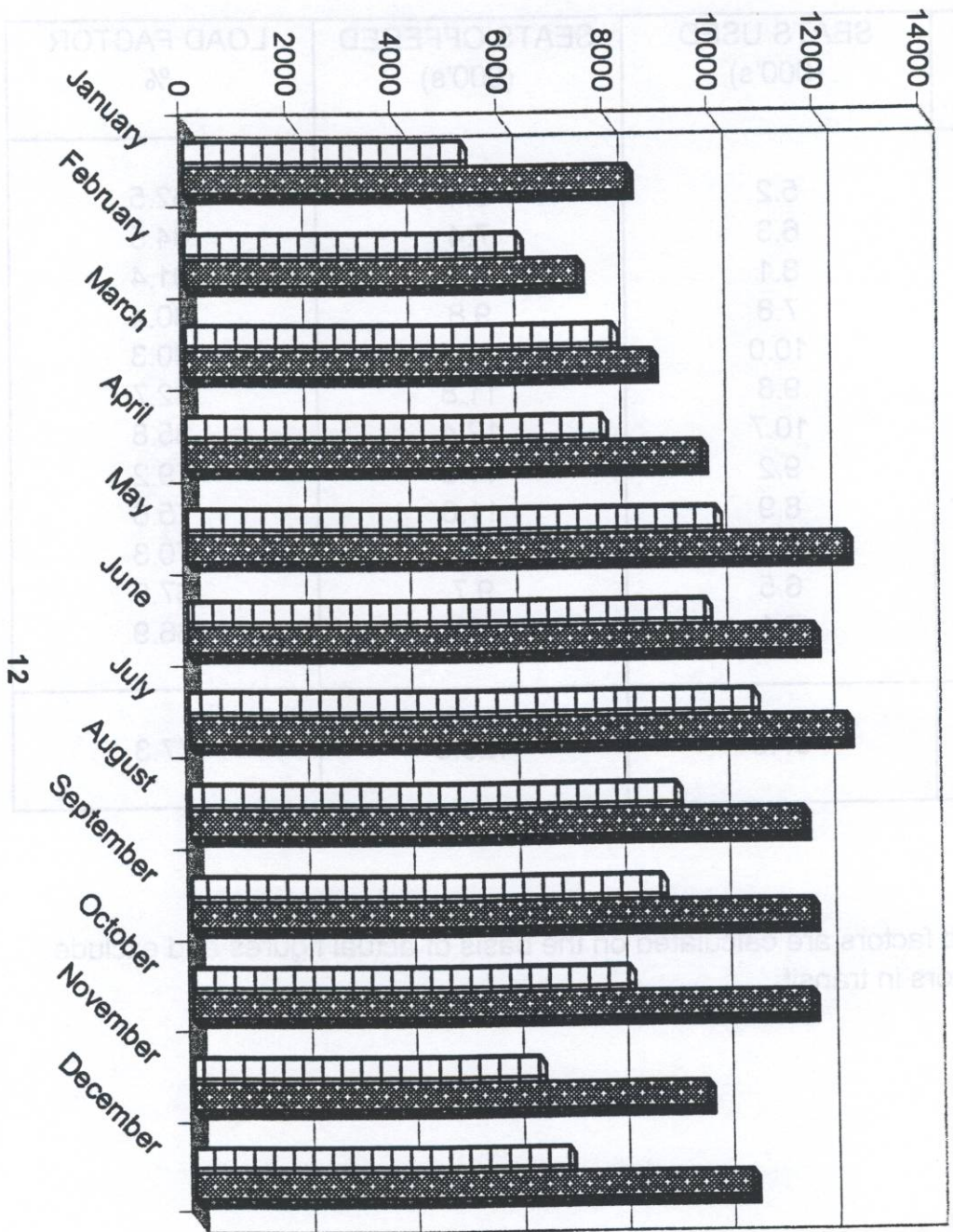
1999

MONTH	SEATS USED (000's)	SEATS OFFERED (000's)	LOAD FACTOR %
January	5.2	8.4	62.5
February	6.3	7.4	84.5
March	8.1	8.8	91.4
April	7.8	9.8	80.4
May	10.0	12.5	80.3
June	9.8	11.8	82.7
July	10.7	12.4	85.8
August	9.2	11.6	79.2
September	8.9	11.8	75.6
October	8.3	11.7	70.3
November	6.5	9.7	67.0
December	7.1	10.6	66.9
TOTAL	97.8	126.5	77.3

Note: Load factors are calculated on the basis of actual figures and exclude visitors in transit.

1999

AIR ARRIVALS FROM UK (SCHEDULED FLIGHTS) - 1999



Seats Used
Seats Offered

ARRIVALS BY AIR FROM UK (SCHEDULED FLIGHTS) 1999

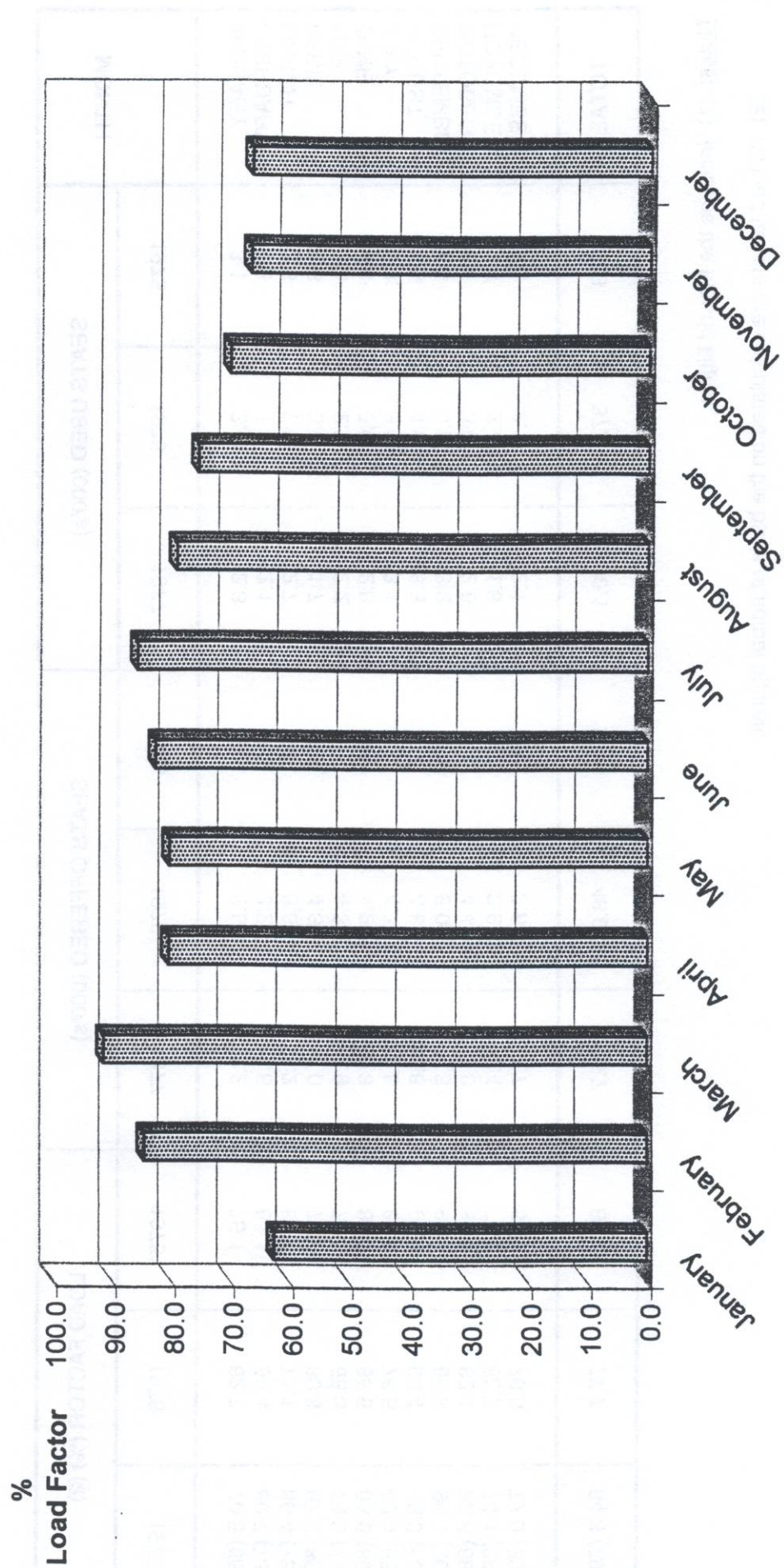


Table 3(a): Departures by air to U.K. (Scheduled Flights) 1975-1977 (1)

MONTH	SEATS USED (000's)			SEATS OFFERED (000's)			LOAD FACTOR (%) (2)		
	1975	1976	1977	1975	1976	1977	1975	1976	1977
JANUARY	3.1	2.4	2.3	4.2	3.8	3.2	75.1	62.7	70.5 (66.7)
FEBRUARY	2.8	1.9	2.1	3.3	3.2	2.6	84.1	59.4	80.7 (73.1)
MARCH	3.6	2.6	2.7	4.2	3.6	3.2	84.8	71.1	86.4 (73.9)
APRIL	3.6	3.5	1.7	4.5	4.3	2.0	79.8	80.8	87.8 (85.8)
MAY	3.8	2.9	2.2	5.1	4.3	2.9	75.0	66.3	74.9 (71.5)
JUNE	4.0	3.6	2.8	4.9	4.2	3.3	82.7	85.6	85.0 (80.4)
JULY	4.4	3.6	3.1	5.1	4.7	3.5	86.5	76.5	88.4 (85.4)
AUGUST	5.5	4.5	3.3	5.7	4.8	3.6	95.9	93.4	93.0 (90.0)
SEPTEMBER	4.8	4.2	3.2	5.0	5.0	3.3	95.1	85.9	96.1 (90.9)
OCTOBER	4.0	3.6	2.8	4.7	4.4	3.0	85.6	82.1	92.6 (88.1)
NOVEMBER	2.6	2.4	1.8	3.7	2.9	2.4	70.7	82.7	74.1 (68.7)
DECEMBER	2.1	2.1	2.1	3.5	2.8	2.7	59.9	76.6	77.0 (73.6)
TOTAL	44.3	37.3	30.1	53.9	48.0	35.7	82.3	77.7	84.3 (79.4)

Notes: (1) Includes the Madrid flights.

(2) All load factors are calculated on the basis of actual figures.

Table 3(b): Departures by air to U.K. (Scheduled Flights) 1978-1980 (1)

MONTH	SEATS USED (000's)			SEATS OFFERED (000's)			LOAD FACTOR (%) (2)		
	1978	1979	1980	1978	1979	1980	1978	1979	1980
JANUARY	2.1	1.7	1.7	2.6	2.5	2.8	79.6 (76.0)	69.0 (63.5)	59.3 (56.6)
FEBRUARY	1.6	1.4	1.5	2.2	2.3	2.7	70.3 (63.0)	65.0 (53.9)	56.6 (52.3)
MARCH	2.3	2.4	2.1	2.6	2.6	2.8	89.2 (79.2)	91.4 (83.6)	75.7 (67.7)
APRIL	2.7	2.5	2.0	2.9	3.2	2.4	92.7 (89.3)	80.0 (76.9)	84.7 (81.9)
MAY	2.4	2.3	1.7	2.8	3.4	2.5	88.8 (84.0)	69.5 (65.2)	69.0 (64.0)
JUNE	2.7	2.3	2.0	2.9	3.2	2.3	92.1 (89.0)	69.8 (66.3)	84.4 (80.4)
JULY	3.0	2.5	2.1	3.2	3.1	2.7	93.7 (92.1)	79.3 (77.3)	77.1 (74.5)
AUGUST	3.2	3.3	2.6	3.4	3.4	2.7	95.2 (93.7)	97.3 (95.1)	96.9 (95.4)
SEPTEMBER	3.1	2.9	2.2	3.1	3.3	2.5	100.0 (97.2)	88.6 (85.2)	84.8 (82.1)
OCTOBER	2.7	2.8	2.4	2.7	3.3	2.8	99.6 (95.1)	82.9 (78.0)	87.5 (82.8)
NOVEMBER	2.1	1.7	1.3	2.4	2.7	1.9	85.1 (80.3)	63.9 (59.8)	70.6 (65.2)
DECEMBER	1.9	1.5	1.5	2.8	2.7	1.9	68.8 (66.1)	55.3 (52.0)	78.1 (75.4)
TOTAL	29.8	27.3	23.1	33.6	35.7	30.0	88.6 (84.6)	76.5 (72.6)	77.0 (73.2)

Notes: (1) Includes the Madrid flights.

(2) Figures show both passenger and "revenue" load factors. The latter is derived by excluding non-paying passengers from the "seats used" column. All load factors are calculated on the basis of actual figures.

Table 3(c): Departures by air to U.K. (Scheduled Flights) 1981-1983 (1)

MONTH	SEATS USED (000's)			SEATS OFFERED (000's)			LOAD FACTOR (%) (2)		
	1981	1982	1983	1981	1982	1983	1981	1982	1983
JANUARY	1.6	1.9	1.7	2.1	2.2	2.9	75.9 (73.2)	85.2 (82.5)	61.2 (58.8)
FEBRUARY	1.5	1.6	1.5	1.9	2.3	2.6	79.3 (74.7)	70.9 (67.4)	56.6 (53.7)
MARCH	1.6	1.9	2.0	2.1	2.1	3.0	76.5 (70.9)	91.3 (86.2)	67.2 (61.7)
APRIL	2.2	2.6	2.6	2.7	3.2	3.9	83.0 (80.7)	82.1 (80.3)	65.8 (63.4)
MAY	1.8	2.1	2.0	2.7	3.2	4.0	64.4 (61.6)	67.0 (65.3)	48.6 (47.0)
JUNE	1.8	2.3	2.6	2.6	3.4	3.9	72.0 (69.3)	69.3 (67.4)	65.5 (64.2)
JULY	2.0	2.5	2.4	2.8	3.5	4.0	69.0 (65.9)	70.4 (69.3)	60.8 (59.2)
AUGUST	2.4	3.0	3.3	2.6	3.3	4.0	92.4 (89.9)	90.6 (88.6)	81.4 (79.5)
SEPTEMBER	2.4	2.8	3.1	2.7	3.4	3.9	89.2 (84.8)	83.1 (81.5)	78.3 (75.3)
OCTOBER	2.4	2.5	2.5	2.7	3.4	3.6	87.7 (84.0)	72.2 (68.2)	69.9 (66.6)
NOVEMBER	1.9	1.9	1.6	2.1	2.8	2.2	89.6 (84.3)	67.7 (64.2)	74.2 (71.1)
DECEMBER	1.8	1.6	1.5	2.1	2.8	2.4	86.1 (83.2)	55.2 (53.5)	63.3 (61.4)
TOTAL	23.4	26.7	26.8	29.1	35.6	40.4	80.2 (76.7)	75.1 (72.6)	66.2 (63.7)

Notes: (1) 1979 includes the Madrid flights.

(2) Figures show both passenger and "revenue" load factors. The latter is derived by excluding non-paying passengers from the "seats used" column. All load factors are calculated on the basis of actual figures.

Table 3(d): Departures by air to U.K. (Scheduled Flights) 1984-1986

MONTH	SEATS USED (000's)			SEATS OFFERED (000's)			LOAD FACTOR (%) (1)		
	1984	1985	1986	1984	1985	1986	1984	1985	1986
JANUARY	2.1	2.3	5.2	2.6	2.6	6.9	80.5 (77.6)	89.3 (87.0)	75.8 (74.2)
FEBRUARY	1.5	1.9	4.1	2.1	2.2	5.9	72.6 (69.7)	85.9 (82.8)	70.0 (66.1)
MARCH	2.0	2.8	6.0	2.4	3.2	7.1	85.2 (81.3)	89.9 (86.4)	84.1 (82.8)
APRIL	2.5	4.0	6.8	3.1	4.6	7.3	80.3 (77.6)	89.0 (87.3)	92.0 (90.5)
MAY	2.0	3.6	6.3	3.2	4.4	8.6	64.0 (61.7)	81.7 (79.9)	73.9 (72.4)
JUNE	2.4	4.3	7.5	3.2	5.0	8.6	74.3 (72.2)	85.5 (84.4)	87.1 (85.9)
JULY	2.3	4.3	6.9	3.3	5.6	9.0	69.6 (68.0)	76.3 (75.5)	76.6 (75.4)
AUGUST	3.1	6.2	9.2	3.3	6.5	9.8	94.1 (92.2)	94.3 (93.4)	93.4 (92.7)
SEPTEMBER	3.0	5.6	8.6	3.3	5.9	9.0	92.5 (89.5)	94.1 (92.4)	95.7 (94.1)
OCTOBER	2.6	5.2	8.5	3.2	5.9	9.1	80.5 (76.2)	89.2 (86.8)	93.0 (91.1)
NOVEMBER	2.1	5.4	6.2	2.4	6.3	7.4	87.9 (83.0)	85.6 (82.7)	83.8 (81.2)
DECEMBER	2.0	4.4	4.9	2.5	7.5	8.2	78.9 (77.4)	58.9 (58.0)	59.7 (58.5)
TOTAL	27.6	50.0	80.1	34.6	59.7	96.9	80.0 (77.2)	83.9 (82.1)	82.7 (81.1)

Note: (1) Figures show both passenger and revenue load factors. The latter is derived by excluding non-paying passengers from the "seats used" column. All load factors are calculated on the basis of actual figures.

Table 3(e): Departures by air to U.K. (Scheduled Flights) 1987-1989

MONTH	SEATS USED (000's)			SEATS OFFERED (000's)			LOAD FACTOR (%) (1)		
	1987	1988	1989	1987	1988	1989	1987	1988	1989
JANUARY	6.4	9.0	12.2	7.9	12.7	18.0	80.6 (79.4)	70.6 (69.7)	67.7 (66.4)
FEBRUARY	4.7	8.2	10.2	6.6	11.2	14.4	70.8 (68.0)	73.1 (72.0)	70.9 (69.3)
MARCH	7.0	9.4	11.9	8.6	12.9	17.8	81.8 (78.1)	73.0 (71.5)	67.1 (65.0)
APRIL	7.5	12.2	13.6	8.3	14.4	17.5	90.2 (89.1)	85.0 (83.6)	77.3 (76.3)
MAY	8.7	11.6	13.3	11.2	16.8	18.7	77.8 (76.1)	68.9 (67.8)	70.7 (69.4)
JUNE	8.7	14.1	15.9	11.9	16.6	19.5	72.9 (71.4)	85.1 (83.8)	81.6 (80.5)
JULY	8.7	13.3	17.1	12.1	17.5	24.5	71.9 (70.6)	76.0 (75.3)	70.0 (69.0)
AUGUST	11.6	15.9	20.9	12.5	18.1	24.5	92.5 (91.7)	87.9 (87.3)	85.1 (84.4)
SEPTEMBER	10.6	15.4	18.4	11.7	17.8	22.0	90.3 (89.2)	86.2 (85.2)	83.5 (82.5)
OCTOBER	10.5	15.5	18.3	12.5	18.2	22.5	84.1 (82.5)	85.5 (84.4)	81.5 (80.1)
NOVEMBER	9.4	11.0	11.9	12.9	14.9	15.5	72.3 (71.1)	74.3 (72.4)	77.2 (75.3)
DECEMBER	6.9	8.7	10.2	13.0	16.1	15.0	55.6 (53.6)	53.8 (53.1)	68.2 (67.1)
TOTAL	100.7	144.3	174.0	129.2	187.2	230.0	77.8 (77.7)	77.1 (76.1)	75.7 (70.5)

Note: (1) Figures show both passenger and revenue load factors. The latter is derived by excluding non-paying passengers from the "seats used" column. All load factors are calculated on the basis of actual figures.

Table 3(f): Departures by air to U.K. (Scheduled Flights) 1990-1992

MONTH	SEATS USED (000's)			SEATS OFFERED (000's)			LOAD FACTOR (%) (1)		
	1990	1991	1992	1990	1991	1992	1990	1991	1992
JANUARY	11.4	7.5	6.7	15.4	12.1	10.2	74.3 (73.0)	62.1 (60.6)	65.9 (64.8)
FEBRUARY	10.5	6.7	6.2	13.3	10.3	8.6	79.1 (77.2)	65.4 (63.2)	72.5 (70.2)
MARCH	12.3	6.2	7.0	14.4	8.7	9.2	85.0 (83.2)	71.3 (69.1)	76.0 (73.8)
APRIL	13.0	7.8	9.5	14.6	8.6	12.8	89.2 (87.9)	90.2 (87.6)	74.3 (73.2)
MAY	11.7	6.9	8.6	14.2	8.2	12.6	82.2 (80.6)	83.6 (81.0)	68.1 (66.8)
JUNE	13.2	7.9	9.8	14.1	9.8	12.2	93.3 (92.0)	80.5 (77.9)	80.4 (79.1)
JULY	12.5	9.2	9.8	14.6	12.4	12.5	86.0 (84.7)	73.8 (71.2)	78.5 (76.7)
AUGUST	13.7	11.0	11.5	15.2	12.3	12.8	90.5 (89.8)	89.5 (87.0)	89.7 (88.8)
SEPTEMBER	13.4	9.9	7.6	14.3	12.2	8.2	93.2 (91.7)	81.7 (78.7)	91.9 (90.2)
OCTOBER	13.8	10.1	10.5	14.7	12.1	11.9	93.5 (92.2)	83.3 (81.5)	87.7 (85.9)
NOVEMBER	9.6	7.3	7.8	12.0	10.9	9.0	80.5 (77.5)	67.0 (65.4)	86.0 (84.2)
DECEMBER	8.7	6.1	5.6	12.1	10.2	7.6	71.8 (70.2)	59.7 (58.5)	73.8 (72.5)
TOTAL	143.8	96.6	100.5	168.9	127.8	127.7	85.1 (83.6)	75.6 (73.3)	78.7 (77.2)

Note: (1) Figures show both passenger and revenue load factors. The latter is derived by excluding non-paying passengers from the "seats used" column. All load factors are calculated on the basis of actual figures.

Table 3(a): Departures by air to U.K. (Scheduled Flights) 1993-1995

MONTH	SEATS USED (000's)			SEATS OFFERED (000's)			LOAD FACTOR (%) (1)		
	1993	1994	1995	1993	1994	1995	1993	1994	1995
JANUARY	6.1	5.8	5.5	7.6	7.1	7.8	80.5 (79.3)	81.9 (80.8)	70.8 (70.3)
FEBRUARY	5.4	5.0	5.2	6.4	6.2	6.9	83.8 (82.9)	81.7 (80.1)	75.1 (74.4)
MARCH	6.7	5.5	6.6	7.8	7.5	7.7	86.1 (84.7)	74.1 (72.9)	85.1 (84.6)
APRIL	8.3	7.6	8.3	10.0	9.3	10.3	82.3 (81.0)	81.9 (81.2)	80.5 (80.3)
MAY	7.9	7.6	7.3	11.1	10.1	10.4	71.3 (69.8)	76.3 (75.2)	69.8 (69.4)
JUNE	9.4	8.7	8.2	11.1	10.4	9.9	84.1 (82.9)	84.8 (83.7)	82.5 (82.0)
JULY	8.7	8.4	7.9	11.3	10.9	10.3	77.5 (76.7)	77.0 (77.5)	76.5 (76.0)
AUGUST	10.0	9.7	8.5	10.9	10.9	10.3	91.4 (90.5)	89.0 (88.3)	82.8 (82.4)
SEPTEMBER	9.7	9.3	8.4	10.5	10.2	9.6	92.2 (91.0)	91.8 (91.2)	87.6 (87.0)
OCTOBER	9.5	8.9	8.3	11.1	10.2	9.9	86.0 (85.0)	88.3 (87.5)	83.0 (82.4)
NOVEMBER	6.5	5.6	6.3	7.3	6.8	8.5	88.8 (87.3)	83.3 (82.4)	73.8 (73.1)
DECEMBER	5.1	4.8	4.8	6.9	7.2	7.9	73.2 (72.4)	67.3 (66.9)	61.5 (60.8)
TOTAL	93.3	86.9	85.3	112.2	107.1	109.5	83.2 (82.0)	81.2 (80.3)	77.8 (77.3)

Note: (1) Figures show both passenger and revenue load factors. The latter is derived by excluding non-paying passengers from the "seats used" column. All load factors are calculated on the basis of actual figures.

Table 3(h): Departures by air to U.K. (Scheduled Flights) 1996-1998

MONTH	SEATS USED (000's)				SEATS OFFERED (000's)				LOAD FACTOR (%) (1)			
	1996	1997	1998		1996	1997	1998		1996	1997	1998	
JANUARY	5.3	4.7	6.0		7.7	6.8	9.5		69.4 (69.0)	68.5 (67.4)	63.1 (62.7)	
FEBRUARY	5.6	5.1	5.3		8.2	6.4	8.7		68.1 (67.6)	79.4 (78.3)	60.7 (60.2)	
MARCH	6.3	5.2	6.7		8.1	6.8	9.9		77.1 (76.4)	76.4 (75.5)	67.9 (67.9)	
APRIL	7.0	6.1	8.2		8.7	6.7	10.0		81.0 (80.7)	90.1 (89.7)	81.9 (81.7)	
MAY	7.0	7.7	8.0		8.7	9.6	11.2		79.9 (79.5)	79.8 (79.2)	71.3 (70.9)	
JUNE	8.1	7.9	8.1		9.1	9.5	10.8		89.5 (89.1)	83.2 (83.0)	74.6 (74.2)	
JULY	6.8	7.5	7.7		8.6	9.7	10.3		79.1 (79.0)	77.0 (76.7)	74.5 (74.3)	
AUGUST	6.8	8.7	9.9		7.6	9.5	11.1		89.7 (89.5)	91.7 (91.4)	89.5 (89.4)	
SEPTEMBER	8.0	8.8	9.2		8.5	10.5	10.4		93.5 (93.2)	83.8 (83.5)	88.5 (88.4)	
OCTOBER	7.3	8.6	8.9		8.3	9.6	11.0		88.6 (88.2)	90.0 (89.6)	80.5 (80.3)	
NOVEMBER	5.9	6.5	7.1		7.6	9.2	8.3		77.7 (77.1)	70.3 (70.0)	84.9 (84.4)	
DECEMBER	4.1	4.7	5.0		7.0	10.1	7.6		58.8 (58.4)	46.3 (46.1)	66.2 (65.5)	
TOTAL	78.2	81.5	90.1		98.1	104.4	119.0		79.6 (79.0)	78.1 (77.6)	75.7 (75.4)	

Note: (1) Figures show both passenger and revenue load factors. The latter is derived by excluding non-paying passengers from the "seats used" column. All load factors are calculated on the basis of actual figures.

Table 3 (i): Departures by air to U. K. (Scheduled Flights) 1999

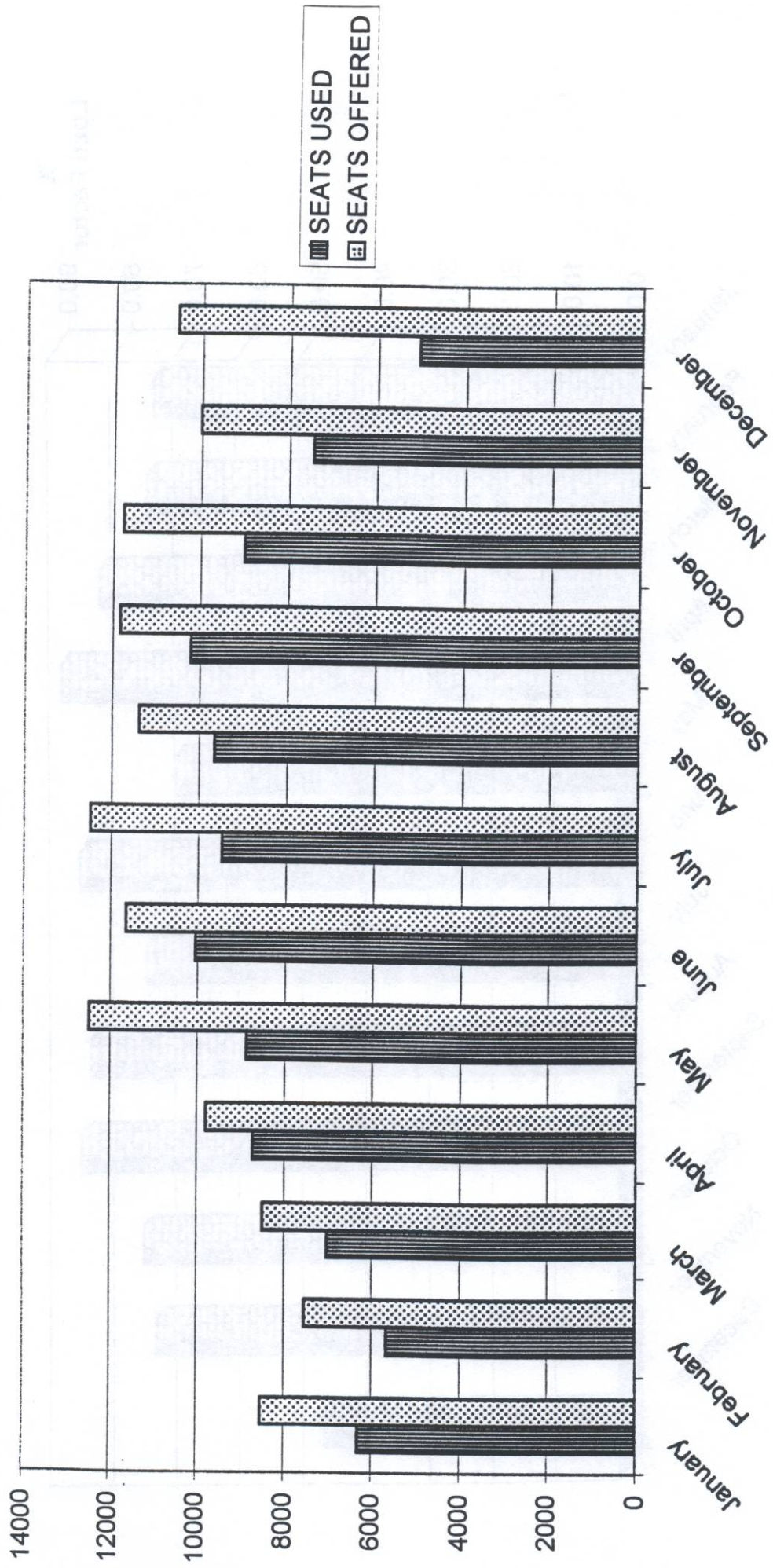
1999

MONTH	SEATS USED (000's)	SEATS OFFERED (000's)	LOAD FACTOR %	
			(1)	(2)
January	6.3	8.5	74.1	73.9
February	5.7	7.5	75.1	74.3
March	7.0	8.5	82.8	82.7
April	8.7	9.8	89.0	88.5
May	8.9	12.5	71.0	71.0
June	10.0	11.6	86.3	86.3
July	9.4	12.5	75.7	75.7
August	9.6	11.4	84.7	84.7
September	10.2	11.8	86.3	86.3
October	9.0	11.8	76.4	76.4
November	7.4	10.0	74.4	74.4
December	5.1	10.6	48.0	47.9
TOTAL	97.4	126.5	77.0	76.9

Note: (1) Passenger load factors are calculated on the basis of actual figures and exclude visitors in transit.

(2) Revenue load factors exclude non-paying passengers from the Seats Used figures and are also calculated on the basis of actual figures.

DEPARTURES BY AIR TO UK (SCHEDULED FLIGHTS) - 1999



DEPARTURES BY AIR TO UK (SCHEDULED FLIGHTS) 1999

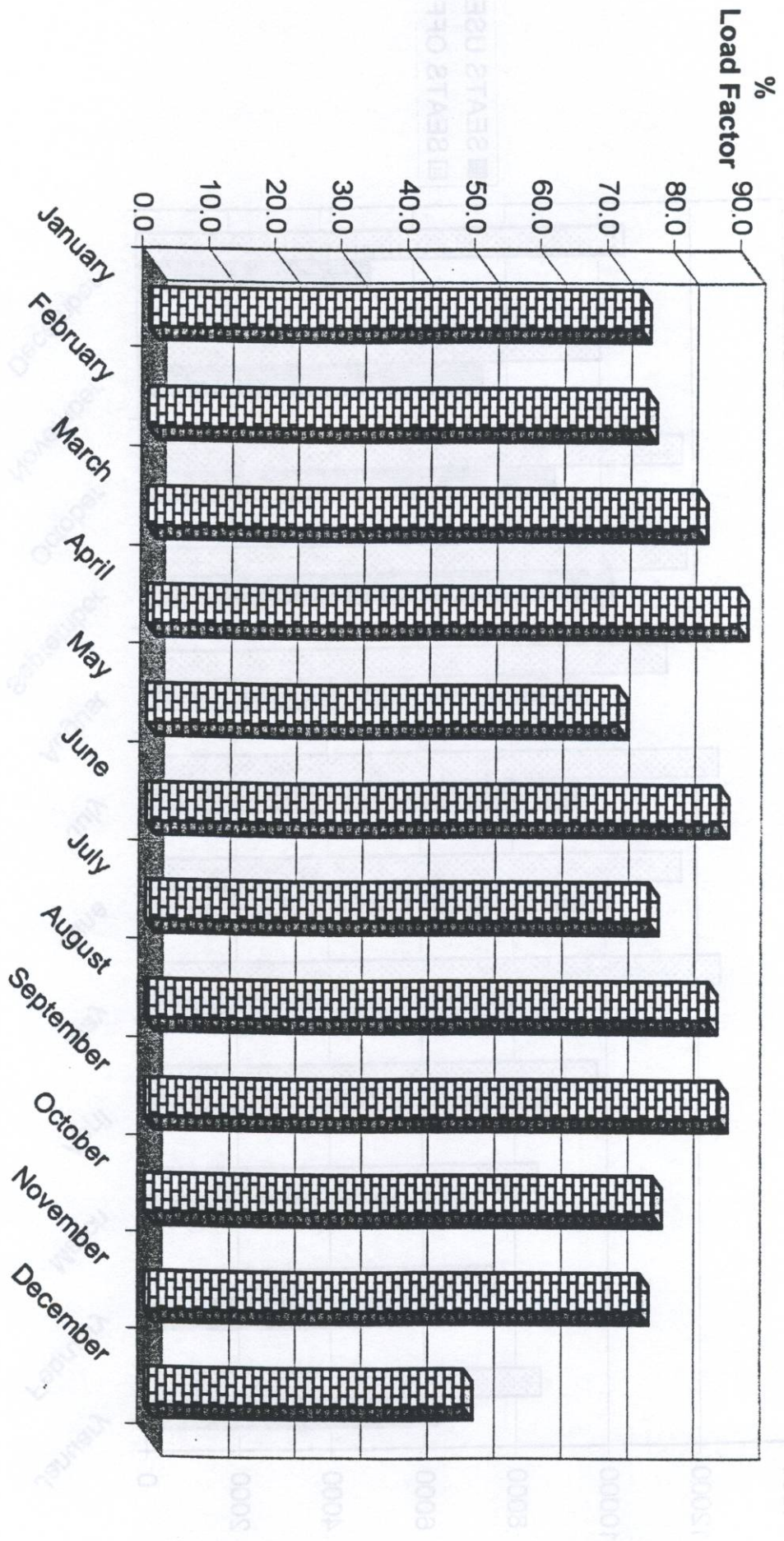


Table 4(a): Arrivals by air from U.K. (Charter Flights) 1979-1982 (1)

MONTH	SEATS USED (000's)				SEATS OFFERED (000's)				LOAD FACTOR (%)			
	1979	1980	1981	1982	1979	1980	1981	1982	1979	1980	1981	1982
JANUARY	0.8	1.6	1.3	1.2	0.9	2.1	1.6	1.6	90.5	78.8	81.6	74.6
FEBRUARY	0.7	1.6	1.2	1.1	0.7	1.8	1.3	1.2	92.8	94.2	93.1	90.2
MARCH	0.8	1.8	1.6	1.4	1.0	2.0	1.7	1.4	85.5	91.5	94.3	97.3
APRIL	1.0	2.1	1.6	1.8	1.1	2.3	1.7	2.1	88.7	88.2	89.3	86.6
MAY	2.4	2.5	2.0	2.0	2.7	3.3	2.2	2.5	90.3	77.6	91.8	80.6
JUNE	2.7	2.4	2.4	2.0	3.2	3.5	2.6	2.6	82.4	67.3	91.3	79.5
JULY	3.7	3.4	2.1	3.0	4.1	3.8	2.3	3.2	91.0	88.7	89.8	91.4
AUGUST	2.6	3.6	2.5	2.4	3.1	4.1	2.9	3.1	84.3	88.1	88.6	76.2
SEPTEMBER	2.9	3.3	2.2	2.0	3.2	3.7	2.7	2.2	89.6	88.5	83.4	89.7
OCTOBER	1.9	2.2	2.0	1.4	2.6	2.9	3.1	1.9	71.2	74.8	64.5	76.0
NOVEMBER	1.7	1.3	1.5	1.1	1.9	1.6	2.3	1.3	88.0	81.1	65.8	84.9
DECEMBER	1.5	1.3	1.5	1.1	1.8	1.6	2.0	1.3	84.2	81.6	74.5	87.8
TOTAL	22.7	27.1	21.9	20.5	26.3	32.7	26.4	24.4	86.0	83.0	83.0	84.0

Note: (1) Regular Charter operations commenced in April 1977. Figures exclude Ministry of Defence Charter Flights.

Table 4(b): Arrivals by air from U.K. (Charter Flights) 1983-1986 (1)

MONTH	SEATS USED (000's)					SEATS OFFERED (000's)					LOAD FACTOR (%)			
	1983	1984	1985	1986	1983	1984	1985	1986	1983	1984	1985	1986		
JANUARY	0.9	1.2	0.7	-	1.2	1.7	0.9	-	79.5	71.7	82.5	-		
FEBRUARY	1.0	1.1	1.0	0.1	1.0	1.2	1.0	0.1	94.0	97.7	99.9	90.8		
MARCH	1.2	1.8	1.5	-	1.2	1.9	1.6	-	94.7	92.7	95.0	-		
APRIL	1.5	1.7	1.7	-	2.2	1.9	1.8	-	69.2	89.7	92.9	-		
MAY	1.9	2.2	2.0	0.8	2.4	2.7	2.3	1.0	79.0	80.7	88.1	83.8		
JUNE	1.8	2.2	1.9	0.7	2.2	2.7	2.2	0.8	82.7	82.0	88.4	84.5		
JULY	2.5	3.1	2.6	0.6	2.8	3.4	2.9	0.6	87.5	91.0	90.6	94.9		
AUGUST	2.3	2.6	2.0	0.7	2.5	2.7	2.1	0.7	93.4	94.1	93.9	96.8		
SEPTEMBER	2.2	2.5	2.4	0.6	2.6	3.0	2.5	0.6	85.5	85.4	93.1	95.4		
OCTOBER	1.7	2.2	1.5	0.6	2.7	2.9	2.2	0.9	63.8	76.6	68.1	66.1		
NOVEMBER	1.5	1.4	-	-	2.0	1.6	-	-	74.9	89.3	-	-		
DECEMBER	2.0	0.9	-	-	2.4	1.0	-	-	83.1	87.5	-	-		
TOTAL	20.5	22.9	17.3	4.1	25.2	26.7	19.5	4.8	81.3	86.0	88.9	84.1		

Note: (1) Figures exclude Ministry of Defence Charter Flights.

Table 4(c): Arrivals by air from U.K. (Charter Flights) 1987-1990 (1)

MONTH	SEATS USED (000's)				SEATS OFFERED (000's)				LOAD FACTOR (%)			
	1987	1988	1989	1990	1987	1988	1989	1990	1987	1988	1989	1990
JANUARY	2.3	1.6	1.2	0.8	2.5	1.7	1.7	1.0	92.2	93.4	72.4	79.5
FEBRUARY	1.5	1.5	1.4	1.0	1.6	1.6	1.8	1.0	97.1	97.5	77.9	91.7
MARCH	1.2	1.8	0.4	1.3	1.2	1.8	0.4	1.3	95.7	96.7	84.7	96.9
APRIL	1.6	1.2	0.8	0.8	1.6	1.4	1.3	1.3	97.6	80.5	61.4	58.1
MAY	0.1	0.6	-	-	0.2	0.7	-	-	61.9	90.2	-	-
JUNE	1.2	0.2	-	-	1.3	0.3	-	-	88.8	85.7	-	-
JULY	1.0	0.5	-	0.3	1.0	0.5	-	0.4	98.0	96.7	-	90.8
AUGUST	1.0	0.6	-	0.2	1.0	0.7	-	0.3	97.1	95.4	-	65.1
SEPTEMBER	1.3	0.5	0.2	0.2	1.3	0.6	0.2	0.5	98.4	74.3	77.9	42.0
OCTOBER	0.8	0.6	-	-	1.0	0.7	0.1	-	75.4	95.2	-	-
NOVEMBER	1.5	1.1	0.8	0.2	1.6	1.2	1.2	0.5	98.3	96.9	66.0	52.6
DECEMBER	1.6	1.5	0.8	-	1.7	1.7	1.0	-	96.0	86.5	80.9	-
TOTAL	15.1	11.7	5.6	4.8	16.0	12.9	7.8	6.3	94.4	90.7	71.7	75.9

Note: (1) Figures exclude Ministry of Defence Charter Flights.

Table 4(d): Arrivals by air from U.K. (Charter Flights) 1991, 1992, 1998

MONTH	SEATS USED (000's)			SEATS OFFERED (000's)			LOAD FACTOR (%) (3)		
	1991	1992	1998	1991	1992	1998	1991	1992	1998
JANUARY	0.0	0.1	0.0	0.2	0.1	0.0	5.8	96.9	0.0
FEBRUARY	0.0	0.0	0.0	0.0	0.0	0.0	0.0	-	0.0
MARCH	0.1	0.0	0.0	0.1	0.0	0.0	90.2	-	0.0
APRIL	0.0	0.0	0.0	0.0	0.0	0.0	0.0	-	0.0
MAY	1.5	0.0	0.0	1.9	0.0	0.0	79.3	-	0.0
JUNE	1.8	0.0	0.0	2.5	0.0	0.0	74.2	-	0.0
JULY	2.1	0.1	0.0	2.4	0.1	0.0	89.0	93.3	0.0
AUGUST	2.7	0.0	0.0	3.1	0.0	0.0	87.6	-	0.0
SEPTEMBER	1.8	0.0	0.0	2.3	0.0	0.0	81.2	-	0.0
OCTOBER	1.0	0.0	0.0	1.8	0.0	0.1	57.0	-	58.0
NOVEMBER	0.0	0.0	0.7	0.1	0.0	0.7	6.1	-	99.3
DECEMBER	0.0	0.1	0.3	0.0	0.1	0.4	0.0	100.0	79.4
TOTAL	9.0	0.3	1.1	12.0	0.3	1.2	75.2	96.9	90.1

Note: (1) Figures exclude Ministry of Defence Charter Flights.

(2) No Charter Flights were recorded during 1993, 1994, 1995, 1996 and 1997.

Table 4 (e): Arrivals by Air (Charter Flights) 1999

1999

MONTH	SEATS USED (000's)	SEATS OFFERED (000's)	LOAD FACTOR (%)
January	0.0	0.1	5.6
February	0.0	0.0	0.0
March	0.2	0.2	82.5
April	0.1	0.1	56.9
May	0.0	0.0	0.0
June	0.0	0.0	0.0
July	0.0	0.0	0.0
August	0.0	0.0	0.0
September	0.0	0.2	15.6
October	0.1	0.2	46.1
November	0.0	0.0	0.0
December	0.1	0.2	73.3
TOTAL	0.5	1.0	48.9

Note: Load factors are calculated on the basis of actual figures and exclude visitors in transit.

Table 5(a): Departures by air to U.K. (Charter Flights) 1979-1982 (1)

MONTH	SEATS USED (000's)				SEATS OFFERED (000's)				LOAD FACTOR (%) (2)			
	1979	1980	1981	1982	1979	1980	1981	1982	1979	1980	1981	1982
JANUARY	0.7	1.7	1.5	1.2	0.8	2.0	1.6	1.6	82.5	83.6	91.7	74.8
FEBRUARY	0.6	1.6	1.2	1.1	0.7	1.8	1.3	1.2	86.5	92.1	89.4	89.6
MARCH	0.8	1.8	1.5	1.4	1.0	2.0	1.7	1.4	86.6	92.6	89.9	96.9
APRIL	1.0	2.2	1.6	1.8	1.1	2.3	1.7	2.1	88.8	94.3	92.8	89.2
MAY	1.7	2.0	1.8	1.9	2.7	3.3	2.2	2.5	63.6	61.4	78.3	78.6
JUNE	2.7	2.6	2.4	2.1	3.2	3.5	2.6	2.5	82.4	72.5	92.8	82.1
JULY	3.5	3.0	2.0	2.6	4.1	3.8	2.3	3.2	84.9	77.6	87.1	80.4
AUGUST	2.9	3.9	2.6	2.7	3.1	4.1	2.9	3.1	93.2	96.6	90.5	86.3
SEPTEMBER	3.0	3.5	2.5	2.0	3.2	3.7	2.7	2.2	93.0	94.9	91.7	91.8
OCTOBER	2.4	2.8	2.6	1.8	2.6	2.9	3.1	1.9	91.8	94.4	84.4	97.1
NOVEMBER	1.8	1.4	1.9	1.2	2.0	1.6	2.4	1.3	92.3	89.2	80.4	90.1
DECEMBER	1.5	1.3	1.7	1.1	1.8	1.6	2.0	1.3	84.5	80.2	88.0	86.9
TOTAL	22.6	27.8	23.3	20.9	26.3	32.6	26.5	24.3	85.8	85.2	87.8	86.1

Notes: (1) Regular Charter operations commenced in April 1977. Figures exclude Ministry of Defence Charter Flights.

(2) No figures available for non-paying passengers and therefore the "revenue" load factor is not shown.

Table 5(b): Departures by air to U.K. (Charter Flights) 1983-1986 (1)

MONTH	SEATS USED (000's)					SEATS OFFERED (000's)					LOAD FACTOR (%) (2)				
	1983	1984	1985	1986	1986	1983	1984	1985	1986	1986	1983	1984	1985	1986	
	JANUARY	1.0	1.5	0.7	-	1.2	1.7	0.9	-	0.9	1.2	1.2	88.5	89.0	85.0
FEBRUARY	0.9	1.0	0.9	0.1	1.0	1.2	1.0	0.1	1.0	1.2	1.2	83.7	86.3	89.7	90.8
MARCH	1.2	1.8	1.5	-	1.2	1.9	1.6	-	1.6	1.9	1.9	97.0	93.0	96.0	-
APRIL	1.5	1.8	1.7	-	2.2	1.9	1.8	-	1.8	1.9	1.9	69.2	94.5	96.0	-
MAY	1.6	1.7	1.7	0.6	2.4	2.7	2.3	1.0	2.3	2.7	2.7	66.7	63.7	72.6	61.8
JUNE	1.9	2.2	1.9	0.7	2.2	2.7	2.2	0.8	2.2	2.7	2.7	83.7	83.0	89.8	85.6
JULY	2.3	3.0	2.5	0.5	2.8	3.4	2.8	0.6	2.8	3.4	3.4	83.2	86.5	87.9	87.7
AUGUST	2.3	2.7	2.0	0.7	2.5	2.7	2.1	0.7	2.1	2.7	2.7	93.2	98.3	98.0	97.8
SEPTEMBER	2.5	2.7	2.5	0.6	2.6	3.0	2.5	0.6	2.5	3.0	3.0	97.5	90.7	97.5	97.8
OCTOBER	2.3	2.7	2.2	0.6	2.7	2.9	2.2	0.9	2.2	2.9	2.9	83.1	95.5	98.1	74.0
NOVEMBER	1.5	1.5	-	-	2.0	1.6	-	-	-	1.6	1.6	74.9	93.3	-	-
DECEMBER	1.7	0.8	-	-	2.4	1.0	-	-	-	1.0	1.0	72.2	80.1	-	-
TOTAL	20.7	23.4	17.6	4.0	25.2	26.7	19.4	4.9	19.4	26.7	26.7	82.2	87.8	91.2	81.5

Notes: (1) Figures exclude Ministry of Defence Charter Flights.

(2) No figures available for non-paying passengers and therefore the "revenue" load factor is not shown.

Table 5(c): Departures by air to U.K. (Charter Flights) 1987-1990 (1)

MONTH	SEATS USED (000's)					SEATS OFFERED (000's)					LOAD FACTOR (%) (2)				
	1987	1988	1989	1990	TOTAL	1987	1988	1989	1990	TOTAL	1987	1988	1989	1990	
JANUARY	2.2	1.6	1.3	0.8	5.9	2.5	1.7	1.7	1.0	6.9	89.0	94.2	78.3	77.3	
FEBRUARY	1.5	1.5	1.4	0.9	5.3	1.6	1.6	1.8	1.0	5.0	95.0	94.4	76.2	83.6	
MARCH	1.0	1.7	0.3	1.2	4.2	1.2	1.8	0.4	1.3	3.7	83.1	93.9	79.1	93.2	
APRIL	0.8	1.4	1.2	1.0	4.4	1.6	1.4	1.3	1.3	5.6	51.7	96.0	92.0	77.9	
MAY	0.0	0.6	-	-	0.6	0.2	0.7	-	-	0.9	32.3	91.2	-	-	
JUNE	1.2	0.2	-	-	1.4	1.3	0.3	-	-	1.6	95.1	90.4	-	-	
JULY	0.9	0.4	-	0.2	1.5	1.0	0.5	-	0.4	1.9	86.0	80.6	-	60.8	
AUGUST	1.0	0.6	-	0.2	1.8	1.0	0.7	-	0.3	2.0	93.9	96.0	-	62.4	
SEPTEMBER	1.3	0.6	0.2	0.2	2.3	1.3	0.6	0.3	0.5	2.7	98.6	91.8	77.1	45.1	
OCTOBER	1.0	0.6	0.1	-	1.7	1.0	0.7	0.1	-	1.8	95.5	91.0	67.2	-	
NOVEMBER	1.6	0.9	0.6	0.2	3.3	1.3	1.2	1.2	0.5	4.2	81.5	78.6	47.7	53.2	
DECEMBER	1.6	1.3	0.7	-	3.6	1.7	1.7	1.0	-	4.4	95.5	79.5	71.7	-	
TOTAL	14.1	11.4	5.8	4.6	35.9	15.8	12.9	7.8	6.3	32.8	89.8	88.4	74.5	75.9	

Notes: (1) Figures exclude Ministry of Defence Charter Flights.

(2) No figures available for non-paying passengers and therefore the "revenue" load factor is not shown.

Table 5(d): Departures by air to U.K. (Charter Flights) 1991, 1992, 1998 (1) (2)

MONTH	SEATS USED (000's)			SEATS OFFERED (000's)			LOAD FACTOR (%) (3)		
	1991	1992	1998	1991	1992	1998	1991	1992	1998
	JANUARY	0.1	0.1	0.0	0.2	0.1	0.0	64.6	93.1
FEBRUARY	0.0	0.0	0.0	0.0	0.0	0.0	0.0	0.0	0.0
MARCH	0.1	0.0	0.0	0.1	0.0	0.0	84.8	0.0	0.0
APRIL	0.0	0.0	0.0	0.0	0.0	0.0	0.0	0.0	0.0
MAY	0.9	0.0	0.0	1.9	0.0	0.0	47.6	0.0	0.0
JUNE	1.8	0.0	0.0	2.5	0.0	0.0	74.2	0.0	0.0
JULY	1.8	0.1	0.0	2.4	0.1	0.0	74.9	93.3	0.0
AUGUST	2.9	0.0	0.0	3.0	0.0	0.0	94.2	0.0	0.0
SEPTEMBER	2.0	0.0	0.0	2.3	0.0	0.0	87.6	0.0	0.0
OCTOBER	1.6	0.0	0.0	2.0	0.0	0.1	78.6	0.0	46.0
NOVEMBER	0.2	0.0	0.6	0.3	0.0	0.7	88.1	0.0	88.1
DECEMBER	0.0	0.3	0.3	0.0	0.2	0.4	0.0	75.4	57.3
TOTAL	9.6	0.5	0.9	12.3	0.4	1.2	78.2	84.3	74.8

Notes: (1) Figures exclude Ministry of Defence Charter Flights. (2) No charter flights were recorded during 1993, 1994, 1995, 1996 and 1997.

(3) No figures available for non-paying passengers and therefore the "revenue" load factor is not shown.

Table 5 (e): Departures by Air (Charter Flights) 1999

1999

MONTH	SEATS USED (000's)	SEATS OFFERED (000's)	LOAD FACTOR (%)
January	0.1	0.1	81.9
February	0.0	0.0	0.0
March	0.1	0.2	54.1
April	0.1	0.1	100.0
May	0.0	0.0	0.0
June	0.0	0.0	0.0
July	0.0	0.0	0.0
August	0.0	0.0	0.0
September	0.0	0.2	15.0
October	0.1	0.2	54.4
November	0.0	0.0	0.0
December	0.0	0.2	0.0
TOTAL	0.5	1.0	48.8

Note: (1) Passenger load factors are calculated on the basis of actual figures and exclude visitors in transit.

(2) Revenue load factors exclude non-paying passengers from the Seats Used figures and are also calculated on the basis of actual figures.

Table 6(a): Arrivals from Morocco 1990-1993

MONTH	SEATS USED (000's)				SEATS OFFERED (000's)				LOAD FACTOR (%)			
	1990	1991	1992	1993	1990	1991	1992	1993	1990	1991	1992	1993
JANUARY	0.7	0.3	-	0.6	1.4	1.0	-	2.5	51.1	30.9	-	23.7
FEBRUARY	0.6	-	-	0.5	1.1	0.1	-	2.2	56.6	2.6	-	22.2
MARCH	0.8	-	-	0.6	1.3	0.5	-	2.6	64.4	4.9	-	21.4
APRIL	0.3	0.2	-	0.4	0.7	1.8	-	2.7	42.8	8.4	-	15.8
MAY	0.3	0.3	-	0.4	0.8	0.9	-	2.9	45.3	36.2	-	15.6
JUNE	0.3	-	-	0.3	0.7	-	-	2.3	42.8	-	-	14.9
JULY	-	-	-	0.5	0.2	-	-	2.4	11.5	-	-	22.1
AUGUST	-	-	-	0.6	-	-	-	1.7	-	-	-	38.1
SEPTEMBER	-	-	-	0.5	-	-	-	1.8	-	-	-	28.7
OCTOBER	-	-	0.5	0.7	-	-	0.7	2.2	-	-	71.8	32.8
NOVEMBER	0.5	-	0.4	0.5	1.8	-	2.5	2.5	28.2	-	15.6	21.0
DECEMBER	0.4	-	0.4	0.5	1.7	-	2.4	2.5	25.5	-	15.4	18.7
TOTAL	3.9	0.8	1.3	6.2	9.7	4.3	5.6	28.2	42.2	19.1	22.9	22.1

Table 6(b): Arrivals from Morocco 1994-1997

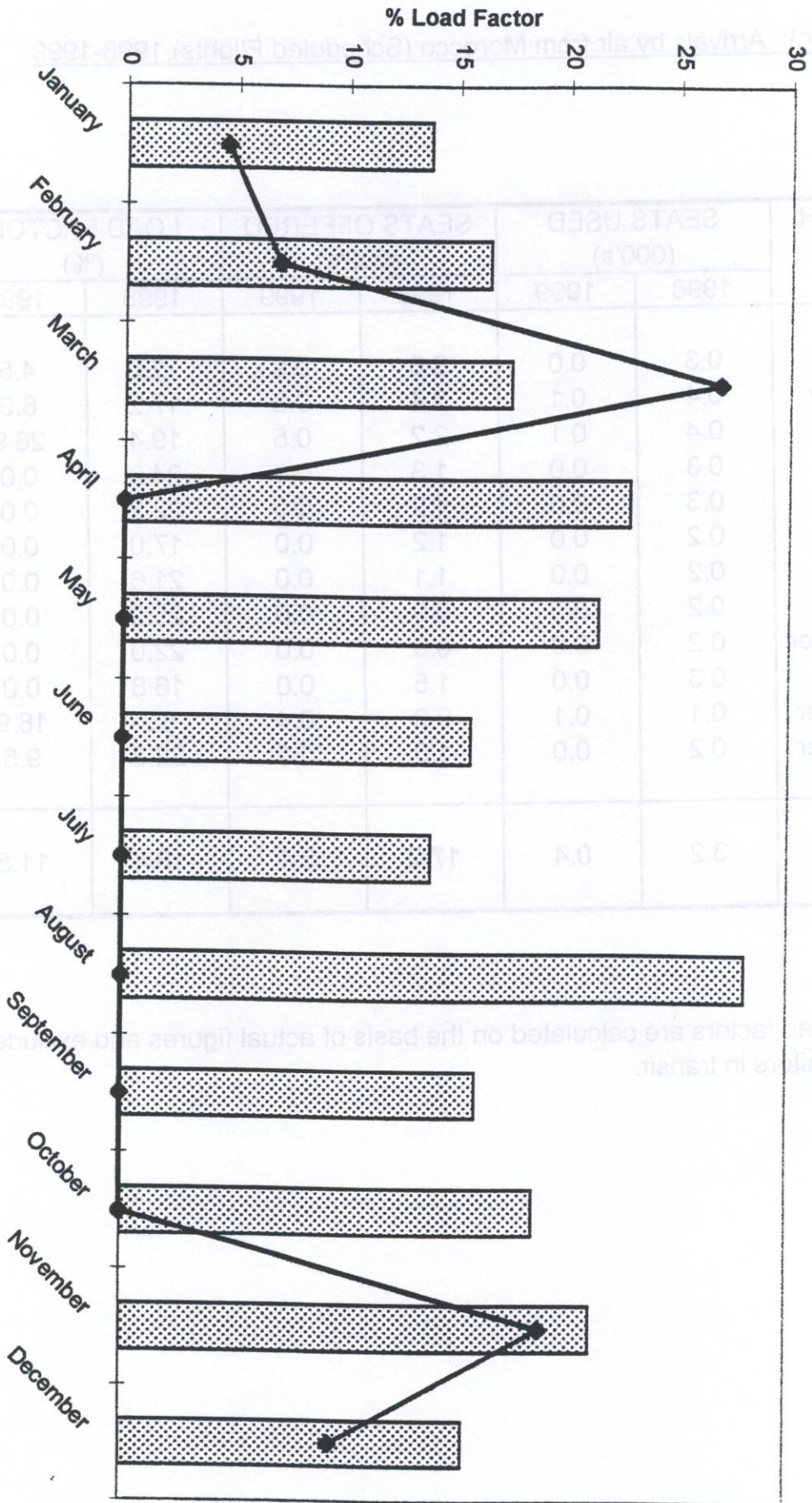
MONTH	SEATS USED (000's)					SEATS OFFERED (000's)					LOAD FACTOR (%)				
	1994	1995	1996	1997	TOTAL	1994	1995	1996	1997	TOTAL	1994	1995	1996	1997	
JANUARY	0.6	0.4	1.6	0.5	2.6	3.2	4.1	3.3	23.1	12.9	40.0	13.7			
FEBRUARY	0.5	0.3	0.6	0.4	2.6	2.8	3.1	2.5	19.2	9.9	19.2	16.4			
MARCH	0.5	0.4	1.0	0.5	2.7	2.9	3.0	2.9	17.5	14.0	33.3	17.4			
APRIL	0.5	0.5	0.6	0.5	2.2	3.2	3.0	2.1	22.8	16.7	21.5	22.8			
MAY	0.4	0.5	0.4	0.5	2.5	3.5	2.7	2.4	14.9	13.0	15.6	21.4			
JUNE	0.3	0.4	0.5	0.4	2.2	3.5	2.8	2.3	13.0	12.3	19.0	15.7			
JULY	0.4	0.4	0.8	0.4	2.0	2.9	2.8	2.6	20.3	13.9	27.1	13.9			
AUGUST	0.5	0.6	0.8	0.5	1.5	2.9	2.2	1.8	30.3	22.1	34.8	28.1			
SEPTEMBER	0.4	0.4	0.5	0.3	1.6	2.9	2.5	2.1	21.7	13.8	20.1	16.0			
OCTOBER	0.4	0.4	0.5	0.4	2.1	3.0	2.8	2.4	18.7	12.4	16.9	18.6			
NOVEMBER	0.4	0.7	0.6	0.5	3.2	3.2	2.8	2.6	11.4	20.8	22.3	21.2			
DECEMBER	0.3	0.5	0.6	0.4	3.3	3.1	2.3	2.7	10.4	16.5	23.5	15.5			
TOTAL	5.0	5.5	8.5	5.3	28.5	37.0	34.1	30.0	17.7	14.9	24.9	18.0			

Table 6 (c): Arrivals by air from Morocco (Scheduled Flights), 1998-1999

MONTH	SEATS USED (000's)		SEATS OFFERED (000's)		LOAD FACTOR (%)	
	1998	1999	1998	1999	1998	1999
January	0.3	0.0	2.6	0.9	12.0	4.5
February	0.4	0.1	2.4	0.8	17.2	6.9
March	0.4	0.1	2.2	0.5	19.4	26.9
April	0.3	0.0	1.3	0.0	24.9	0.0
May	0.3	0.0	1.2	0.0	22.2	0.0
June	0.2	0.0	1.2	0.0	17.0	0.0
July	0.2	0.0	1.1	0.0	21.6	0.0
August	0.2	0.0	0.9	0.0	25.2	0.0
September	0.2	0.0	0.9	0.0	22.0	0.0
October	0.3	0.0	1.5	0.0	16.8	0.0
November	0.1	0.1	0.9	0.4	8.2	18.9
December	0.2	0.0	1.0	0.5	22.3	9.5
TOTAL	3.2	0.4	17.2	3.1	18.4	11.5

Note: Load factors are calculated on the basis of actual figures and exclude visitors in transit.

**ARRIVALS BY AIR FROM MOROCCO (SCHEDULED FLIGHTS)
1998 - 1999**



 1998
 1999

Table 7(a): Departures by air to Morocco 1990-1993

MONTH	SEATS USED (000's)				SEATS OFFERED (000's)				LOAD FACTOR (%)			
	1990	1991	1992	1993	1990	1991	1992	1993	1990	1991	1992	1993
JANUARY	0.7	0.3	-	0.7	1.4	1.1	-	2.6	49.2	28.7	-	26.5
FEBRUARY	0.6	-	-	0.7	1.1	0.1	-	2.3	55.6	4.3	-	32.0
MARCH	0.7	-	-	0.6	1.3	0.6	-	2.6	58.8	6.8	-	22.5
APRIL	0.4	0.1	-	0.6	0.7	0.9	-	3.0	53.5	9.6	-	21.5
MAY	0.3	0.3	-	0.6	0.8	0.9	-	2.9	41.6	35.7	-	22.7
JUNE	0.3	-	-	0.6	0.7	-	-	2.4	46.8	-	-	23.7
JULY	-	-	-	0.8	0.2	-	-	1.9	13.5	-	-	39.2
AUGUST	-	-	-	0.9	-	-	-	1.9	-	-	-	46.0
SEPTEMBER	-	-	-	0.7	-	-	-	2.0	-	-	-	37.0
OCTOBER	-	-	0.1	0.9	-	-	0.5	2.3	-	-	17.6	39.3
NOVEMBER	0.5	-	0.4	0.6	1.8	-	2.6	2.7	29.1	-	16.5	21.8
DECEMBER	0.6	-	0.5	0.6	1.7	-	2.4	2.5	33.5	-	22.2	21.8
TOTAL	4.1	0.8	1.1	8.3	9.7	3.6	5.6	29.1	43.5	21.6	19.1	28.4

Table 7(b): Departures by air to Morocco 1994-1997

MONTH	SEATS USED (000's)					SEATS OFFERED (000's)					LOAD FACTOR (%) (1)				
	1994	1995	1996	1997	TOTAL	1994	1995	1996	1997	TOTAL	1994	1995	1996	1997	
JANUARY	0.7	0.4	0.7	0.4	2.7	3.4	3.2	3.1	25.5	11.3 (10.9)	21.5 (21.3)	13.0 (13.0)			
FEBRUARY	0.4	0.3	0.8	0.4	2.5	2.8	2.7	2.4	17.9	9.6 (9.5)	30.0 (30.0)	17.7 (17.1)			
MARCH	0.7	0.5	0.9	0.4	2.7	3.2	3.0	2.9	25.7	16.5 (16.3)	30.5 (30.4)	14.6 (13.6)			
APRIL	0.5	0.5	0.6	0.4	2.4	3.0	2.8	2.1	19.7	17.0 (17.0)	20.6 (20.6)	20.1 (19.4)			
MAY	0.4	0.7	0.6	0.5	2.6	3.8	3.0	2.7	14.7	18.2 (17.7)	21.1 (21.1)	16.9 (16.3)			
JUNE	0.3	0.6	0.6	0.3	2.3	3.6	3.0	2.3	12.7	16.8 (16.2)	20.7 (20.4)	14.0 (13.3)			
JULY	0.4	0.4	0.8	0.4	1.6	2.7	2.8	2.4	26.6	13.6 (13.5)	28.7 (28.5)	18.5 (17.9)			
AUGUST	0.6	0.5	0.7	0.5	1.8	2.7	2.4	2.2	30.8	18.1 (17.9)	28.9 (28.9)	24.1 (23.6)			
SEPTEMBER	0.3	0.7	0.6	0.4	1.8	2.8	2.6	2.5	18.9	24.9 (24.1)	24.7 (24.5)	16.6 (16.1)			
OCTOBER	0.5	0.6	0.6	0.4	2.2	3.2	3.0	2.1	21.5	18.2 (17.3)	19.4 (19.1)	18.0 (17.4)			
NOVEMBER	0.5	0.6	0.9	0.3	3.4	3.3	2.9	2.3	13.5	17.6 (17.2)	31.4 (31.4)	13.6 (13.2)			
DECEMBER	0.4	0.6	0.6	0.4	3.3	2.9	3.0	2.5	19.3	19.0 (18.7)	20.7 (20.7)	14.8 (14.4)			
TOTAL	5.7	6.2	8.4	4.9	29.3	37.4	34.4	29.5	19.3	16.7 (16.3)	24.7 (24.6)	16.6 (16.2)			

Note: (1) Figures show both passenger and revenue load factors. The latter is derived by excluding non-paying passengers from the "seats used" column. All load factors are calculated on the basis of actual figures.

Table 7 (c): Departures by air to Morocco (Scheduled Flights), 1998-1999

MONTH	SEATS USED (000's)		SEATS OFFERED (000's)		LOAD FACTOR (%)			
	1998	1999	1998	1999	1998	1998*	1999	1999*
	January	0.2	0.1	3.1	0.8	10.2	9.9	8.3
February	0.5	0.1	2.4	0.8	22.0	21.6	15.3	15.1
March	0.3	0.1	2.9	0.5	14.5	14.0	11.2	10.6
April	0.3	0.0	2.1	0.0	27.4	27.0	0.0	0.0
May	0.2	0.0	2.7	0.0	16.0	15.9	0.0	0.0
June	0.2	0.0	2.3	0.0	11.9	11.8	0.0	0.0
July	0.2	0.0	2.4	0.0	12.9	12.7	0.0	0.0
August	0.2	0.0	2.2	0.0	15.3	15.2	0.0	0.0
September	0.2	0.0	2.5	0.0	18.2	18.2	0.0	0.0
October	0.2	0.0	2.1	0.0	12.4	12.3	0.0	0.0
November	0.1	0.1	2.3	0.4	9.5	9.3	13.6	13.6
December	0.2	0.0	2.5	0.5	15.8	15.8	8.0	8.0
TOTAL	4.9	0.3	29.5	2.9	15.2	15.0	11.4	11.2

Note: (1) Passenger load factors are calculated on the basis of actual figures and exclude visitors in transit.

*(2) Revenue load factors exclude non-paying passengers from the Seats Used figures and are also calculated on the basis of actual figures.

DEPARTURES BY AIR TO MOROCCO (SCHEDULED FLIGHTS)
1998 - 1999

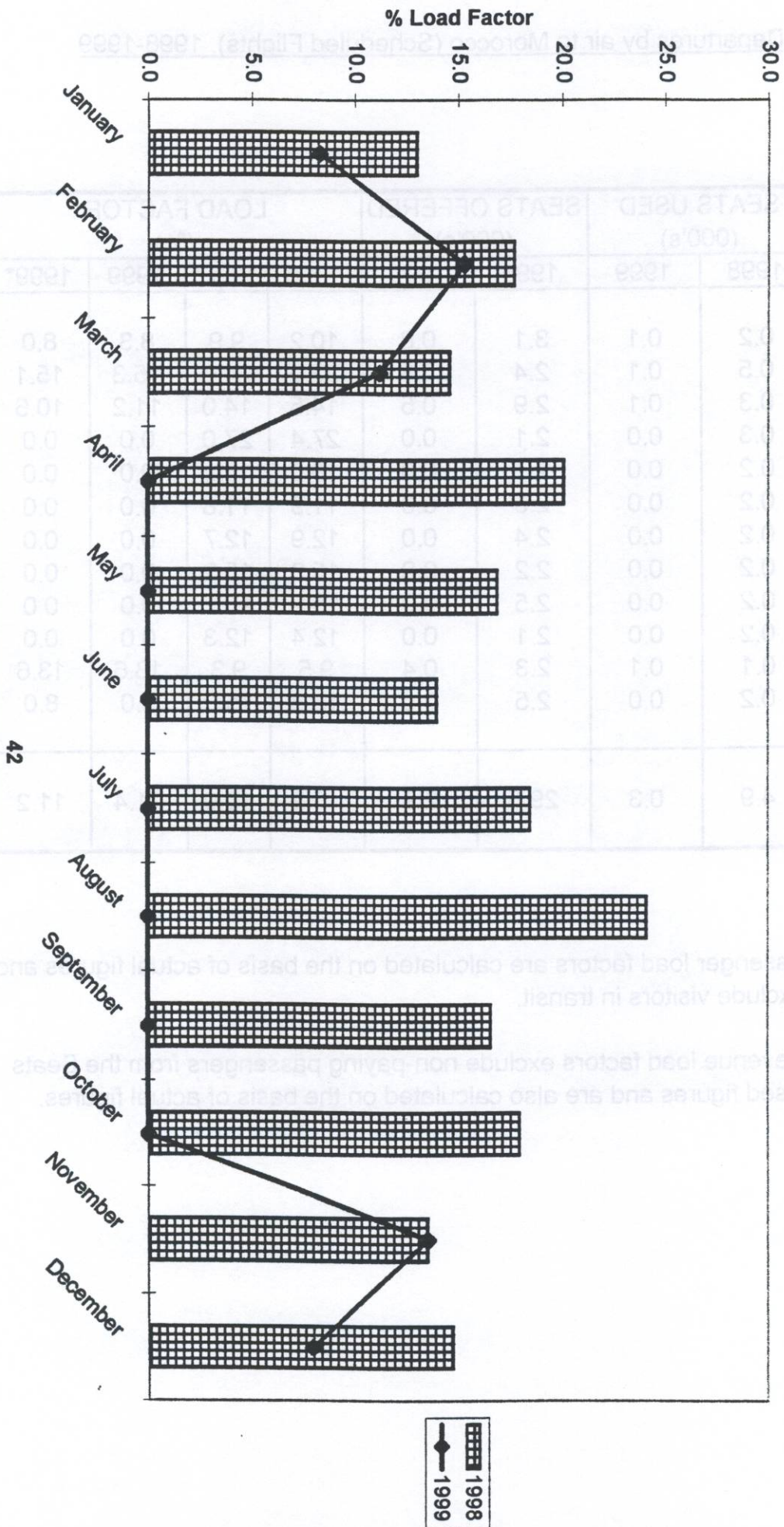


Table 8: Commercial Freight, Set Down/Picked Up, Gibraltar 1973 -1999

(000's kgs)

YEAR	SET DOWN	PICKED UP
1973	1831	87
1974	1881	134
1975	1701	119
1976	1721	125
1977	1089	87
1978	927	62
1979	896	61
1980	447	38
1981	318	64
1982	481	44
1983	381	38
1984	333	36
1985	419	40
1986	523	59
1987	499	67
1988	599	40
1989	648	45
1990	797	95
1991	596	54
1992	476	64
1993	597	74
1994	518	49
1995	504	52
1996	406	58
1997	330	57
1998	406	69
1999	433	77

Note: Relates to freight from/to all destinations.

COMMERCIAL FREIGHT 1974 - 1999

