



GOVERNMENT OF GIBRALTAR

**AIR TRAFFIC
SURVEY
1998**

**ADMINISTRATION & STATISTICS
DIVISION (DTI)**

- CONTENTS -

		PAGE
A.	Preface	1
B.	Definitions	2
C.	Tables	3-44
<u>LIST OF TABLES</u>		
Table 1:	Arrivals/Departures by air from/to U.K. 1974-1998	3
Chart	Arrivals by Air from U.K. 1974-1998	4
Table 2: (a)	Arrivals by air from U.K. (Scheduled flights) 1974-77	5
Table 2: (b)	Arrivals by air from U.K. (Scheduled flights) 1978-81	6
Table 2: (c)	Arrivals by air from U.K. (Scheduled flights) 1982-85	7
Table 2: (d)	Arrivals by air from U.K. (Scheduled flights) 1986-89	8
Table 2: (e)	Arrivals by air from U.K. (Scheduled flights) 1990-93	9
Table 2: (f)	Arrivals by air from U.K. (Scheduled flights) 1994-97	10
Table 2: (g)	Arrivals by air from U.K. (Scheduled flights) 1998	11
Chart	Air Arrivals from U.K. (Scheduled flights) 1998	12
Chart	Arrivals by air from U.K. (Scheduled flights) 1998	13
Table 3: (a)	Departures by air to U.K. (Scheduled flights) 1974-76	14
Table 3: (b)	Departures by air to U.K. (Scheduled flights) 1977-79	15
Table 3: (c)	Departures by air to U.K. (Scheduled flights) 1980-82	16
Table 3: (d)	Departures by air to U.K. (Scheduled flights) 1983-85	17
Table 3: (e)	Departures by air to U.K. (Scheduled flights) 1986-88	18
Table 3: (f)	Departures by air to U.K. (Scheduled flights) 1989-91	19
Table 3: (g)	Departures by air to U.K. (Scheduled flights) 1992-94	20
Table 3: (h)	Departures by air to U.K. (Scheduled flights) 1995-97	21
Table 3: (i)	Departures by air to U.K. (Scheduled flights) 1998	22
Chart	Departures by air to U.K. (Scheduled flights) 1998	23
Chart	Departures by air to U.K. (Scheduled flights) 1998	24
Table 4: (a)	Arrivals by air from U.K. (Charter flights) 1978-1981	25
Table 4: (b)	Arrivals by air from U.K. (Charter flights) 1982-1985	26
Table 4: (c)	Arrivals by air from U.K. (Charter flights) 1986-1989	27
Table 4: (d)	Arrivals by air from U.K. (Charter flights) 1990-1992	28
Table 4: (e)	Arrivals by air (Charter flights) 1998	29
Table 5: (a)	Departures by air to U.K. (Charter flights) 1978-1981	30
Table 5: (b)	Departures by air to U.K. (Charter flights) 1982-1985	31
Table 5: (c)	Departures by air to U.K. (Charter flights) 1986-1989	32
Table 5: (d)	Departures by air to U.K. (Charter flights) 1990-1992	33
Table 5: (e)	Departures by air (Charter flights) 1998	34
Table 6: (a)	Arrivals by air from Morocco 1989-1992	35
Table 6: (b)	Arrivals by air from Morocco 1993-1996	36
Table 6: (c)	Arrivals by air from Morocco (Scheduled flights) 1997-98	37
Chart	Arrivals by air from Morocco (Scheduled flights) 1997-98	38
Table 7: (a)	Departures by air to Morocco 1989-1992	39
Table 7: (b)	Departures by air to Morocco 1993-1996	40
Table 7: (c)	Departures by air to Morocco (Scheduled flights) 1997-98	41
Chart	Departures by air to Morocco (Scheduled flights) 1997-98	42
Table 8	Commercial freight, Set down/picked up, Gibraltar 1972-1998	43
Chart	Commercial freight 1972-1998	44

A. PREFACE

The Statistics (Air Traffic Survey) Order 1971 requires that a report and summary of the findings of the Air Traffic Survey be laid before the House of Assembly. This is the twenty-fourth report and contains a summary of statistics collected for the years 1974 to 1998.

The report contains statistical data on air traffic operations between Gibraltar and other destinations for both scheduled and charter airlines. The report also includes some general data on commercial freight.

I must express my thanks to the Airlines and Gibraltar Airport Authority for their continued co-operation in the conduct of this Survey.

APRIL 1999

GOVERNMENT STATISTICIAN

B. DEFINITIONS

- (a) Passenger Load Factor: $\frac{\text{All seats used}}{\text{All seats offered (less in-transits)}} \times 100$
- (b) Revenue Load Factor: $\frac{\text{All seats used by "paying" passengers}}{\text{All seats offered (less in-transits)}} \times 100$
- (c) Scheduled Services: are those performed according to a published timetable including those supplementary thereto, and available for use by members of the public.
- (d) Charter Services: includes all air passengers transport flights, other than scheduled services and Ministry of Defence Charters.

Table 1: Arrivals/Departures by Air from/to UK 1974 -1998

YEAR	ARRIVALS (000's)						DEPARTURES (000's)					
	TOTAL		SCHEDULED		CHARTER		TOTAL		SCHEDULED		CHARTER	
	Seats Offered	Seats Used	Seats Offered	Seats Used	Seats Offered	Seats Used	Seats Offered	Seats Used	Seats Offered	Seats Used	Seats Offered	Seats Used
1974	59.6	45.1	59.6	45.1	-	-	58.1	45.3	58.1	45.3	-	-
1975	58.4	44.0	58.4	44.0	-	-	53.9	44.3	53.9	44.3	-	-
1976	50.3	37.1	50.3	37.1	-	-	48.0	37.3	48.0	37.3	-	-
1977	43.0	34.4	37.1	29.4	5.9	5.4	41.5	35.2	35.7	30.1	5.9	5.1
1978	49.3	42.2	34.0	29.4	15.3	12.8	48.9	42.9	33.6	29.8	15.3	13.1
1979	62.5	50.0	36.2	27.6	26.4	22.4	62.0	49.9	35.7	27.3	26.4	22.6
1980	62.8	50.0	30.2	22.9	32.7	27.1	62.7	50.9	30.0	23.1	32.7	27.8
1981	55.6	45.5	29.2	23.6	26.4	21.9	55.7	46.7	29.1	23.4	26.5	23.3
1982	60.0	47.5	35.6	27.0	24.4	20.5	60.0	47.6	35.6	26.7	24.3	20.9
1983	65.6	46.7	40.4	26.3	25.2	20.5	65.6	47.5	40.4	26.8	25.2	20.7
1984	61.3	50.3	34.6	27.4	26.7	22.9	61.2	51.0	34.6	27.6	26.7	23.4
1985	79.0	67.6	59.5	50.3	19.5	17.3	79.0	67.7	59.7	50.0	19.3	17.7
1986	101.7	83.2	96.9	79.1	4.8	4.1	101.8	84.1	96.9	80.1	4.9	4.0
1987	145.9	113.2	129.8	98.1	16.1	15.1	145.4	114.8	129.3	100.9	16.1	13.9
1988	208.7	151.2	196.0	139.6	12.7	11.6	208.3	156.1	195.6	144.6	12.7	11.5
1989	239.4	173.2	231.6	167.6	7.8	5.6	237.8	179.8	230.0	174.0	7.8	5.8
1990	172.0	141.5	165.8	136.8	6.2	4.7	175.1	148.5	168.9	143.8	6.2	4.7
1991	138.1	104.0	126.0	94.9	12.1	9.1	140.2	106.3	127.8	96.6	12.4	9.7
1992	127.4	98.1	127.0	97.7	0.4	0.4	128.2	101.0	127.7	100.5	0.5	0.4
1993	111.5	91.3	111.4	91.2	0.1	0.1	112.2	93.3	112.2	93.3	-	-
1994	106.4	85.2	106.4	85.2	-	-	107.1	86.9	207.2	86.9	-	-
1995	109.4	83.8	109.4	83.8	-	-	109.5	85.3	109.5	85.3	-	-
1996	98.7	78.1	98.7	78.1	-	-	98.1	78.2	98.1	78.2	-	-
1997	106.6	83.2	106.6	83.2	-	-	104.4	81.5	104.4	81.5	-	-
1998	121.5	92.0	120.4	91.0	1.2	1.1	120.2	91.0	119.0	90.1	1.2	0.9

Note: Charter flights for 1998 include all destinations.

ARRIVALS BY AIR FROM UK - 1974 - 1998

(000's)

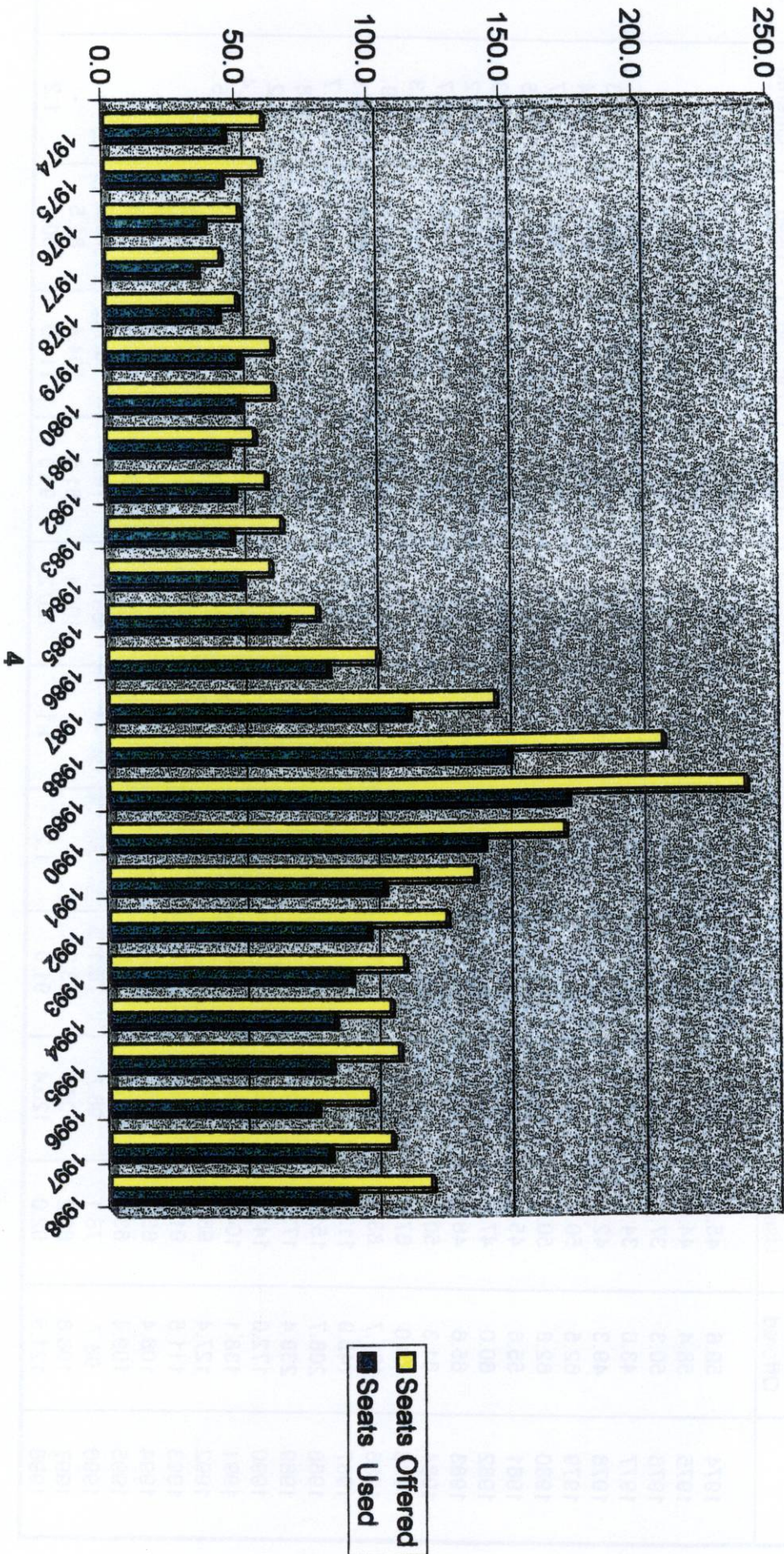


Table 2(a): Arrivals by air from U.K. (Scheduled Flights) 1974-1977

MONTH	SEATS USED (000's)				SEATS OFFERED (000's)				LOAD FACTOR (%) (1)			
	1974	1975	1976	1977	1974	1975	1976	1977	1974	1975	1976	1977
JANUARY	3.1	3.0	2.2	2.0	5.0	4.3	4.0	3.3	61.5	70.3	63.7	58.0
FEBRUARY	3.3	2.9	2.0	2.1	4.6	3.7	3.3	2.6	71.0	77.5	55.5	80.6
MARCH	3.5	3.8	3.0	2.9	4.4	4.3	3.7	3.3	80.1	87.3	61.0	88.1
APRIL	3.3	2.9	3.0	1.5	4.7	4.5	4.5	2.2	70.7	64.9	68.1	68.4
MAY	3.5	4.1	3.4	2.2	5.1	5.6	4.5	3.0	68.5	72.9	77.3	73.0
JUNE	4.2	4.0	3.0	2.7	5.5	5.4	4.4	3.6	76.2	74.2	70.0	75.7
JULY	4.7	5.4	4.9	3.5	5.4	6.1	5.4	3.8	87.6	88.7	83.7	93.2
AUGUST	5.0	5.3	4.2	3.3	6.1	6.5	5.0	3.6	82.2	81.2	84.4	91.2
SEPTEMBER	4.3	4.2	3.6	2.7	5.5	5.7	5.0	3.4	78.1	75.0	69.7	80.2
OCTOBER	4.1	3.6	3.2	2.5	5.0	5.0	4.5	3.0	82.2	72.5	72.3	83.7
NOVEMBER	3.1	2.6	2.4	1.8	4.0	3.8	3.0	2.6	77.7	67.6	82.3	71.2
DECEMBER	3.0	2.2	2.2	2.2	4.3	3.5	3.0	2.7	70.7	63.7	74.3	80.1
TOTAL	45.1	44.0	37.1	29.4	59.6	58.4	50.3	37.1	75.8	75.4	73.6	79.3

Note: (1) All load factors are calculated on the basis of actual figures.

Table 2(b): Arrivals by air from U.K. (Scheduled Flights) 1978-1981

MONTH	SEATS USED (000's)				SEATS OFFERED (000's)				LOAD FACTOR (%) (1)			
	1978	1979	1980	1981	1978	1979	1980	1981	1978	1979	1980	1981
JANUARY	1.9	1.6	1.6	1.5	2.6	2.6	2.8	2.1	71.2	62.6	57.3	70.6
FEBRUARY	1.7	1.5	1.5	1.5	2.3	2.3	2.7	1.9	75.5	65.1	57.8	81.1
MARCH	2.5	2.4	2.3	1.9	2.7	2.7	2.8	2.2	94.1	88.7	83.6	88.2
APRIL	2.4	2.5	1.7	2.2	2.9	3.2	2.4	2.7	84.7	77.7	70.3	79.3
MAY	2.5	2.6	2.0	1.9	2.8	3.4	2.5	2.7	89.0	76.6	79.2	67.7
JUNE	2.8	2.3	2.0	1.9	2.9	3.3	2.4	2.6	95.4	70.5	81.1	72.5
JULY	3.3	3.0	2.5	2.4	3.3	3.1	2.8	2.8	99.8	93.7	89.4	85.5
AUGUST	3.1	3.0	2.4	2.4	3.4	3.4	2.7	2.6	92.0	89.9	91.1	93.3
SEPTEMBER	2.8	2.6	1.7	1.9	3.1	3.4	2.5	2.7	90.8	76.9	67.4	71.9
OCTOBER	2.5	2.7	2.3	2.3	2.7	3.4	2.8	2.7	90.5	79.1	81.3	85.2
NOVEMBER	1.9	1.6	1.3	1.8	2.5	2.7	1.9	2.1	77.2	58.8	70.7	85.0
DECEMBER	2.0	1.8	1.6	1.9	2.8	2.7	1.9	2.1	68.7	66.3	82.6	91.4
TOTAL	29.4	27.6	22.9	23.6	34.0	36.2	30.2	29.2	86.4	76.2	76.0	80.7

Note: (1) All load factors are calculated on the basis of actual figures.

Table 2(c): Arrivals by air from U.K. (Scheduled Flights) 1982-1985

MONTH	SEATS USED (000's)				SEATS OFFERED (000's)				LOAD FACTOR (%) (1)			
	1982	1983	1984	1985	1982	1983	1984	1985	1982	1983	1984	1985
JANUARY	1.7	1.6	1.5	2.1	2.2	2.9	2.6	2.6	78.2	55.0	59.8	79.1
FEBRUARY	1.8	1.5	1.7	2.0	2.2	2.6	2.1	2.2	77.5	59.0	81.8	90.9
MARCH	2.0	2.1	2.1	3.0	2.1	3.0	2.4	3.2	95.9	70.3	87.2	97.0
APRIL	2.8	2.3	2.5	3.9	3.2	3.9	3.1	4.6	86.7	59.2	79.2	84.8
MAY	2.3	2.2	2.3	3.9	3.2	4.0	3.2	4.4	72.4	55.4	70.1	89.5
JUNE	2.3	2.4	2.2	4.3	3.3	3.9	3.3	5.0	70.9	60.3	68.9	86.4
JULY	2.7	3.0	2.9	5.4	3.5	4.0	3.4	5.7	77.8	74.4	86.1	95.2
AUGUST	2.8	2.8	2.8	5.8	3.3	4.0	3.2	6.5	82.4	70.5	86.7	89.2
SEPTEMBER	2.4	2.7	2.5	4.7	3.4	3.9	3.2	5.8	70.8	68.0	76.4	79.8
OCTOBER	2.3	2.3	2.6	5.1	3.4	3.6	3.2	5.8	69.0	63.0	79.3	86.7
NOVEMBER	1.9	1.6	2.0	4.6	2.9	2.2	2.4	6.3	65.2	71.1	85.0	73.4
DECEMBER	2.0	1.8	2.3	5.5	2.9	2.4	2.5	7.4	70.5	77.1	90.1	74.1
TOTAL	27.0	26.3	27.4	50.3	35.6	40.4	34.6	59.5	75.9	65.0	79.0	84.5

Note: (1) All load factors are calculated on the basis of actual figures.

Table 2(d): Arrivals by air from U.K. (Scheduled Flights) 1986-1989

MONTH	SEATS USED (000's)				SEATS OFFERED (000's)				LOAD FACTOR (%) (1)			
	1986	1987	1988	1989	1986	1987	1988	1989	1986	1987	1988	1989
JANUARY	4.1	4.7	7.0	9.7	7.0	7.8	12.7	18.0	58.6	60.3	55.2	53.9
FEBRUARY	4.4	5.0	8.4	10.4	5.9	6.6	11.3	14.4	75.2	76.2	74.9	72.4
MARCH	6.5	7.0	10.6	13.6	7.1	8.6	13.1	17.8	92.2	81.9	81.2	76.3
APRIL	5.6	7.6	10.4	11.9	7.2	8.4	14.2	17.6	77.4	90.0	73.7	67.7
MAY	7.4	9.0	13.1	14.9	8.7	11.4	17.2	19.3	84.8	79.3	76.3	77.2
JUNE	7.1	8.1	11.9	14.7	8.5	12.0	16.2	19.8	83.2	67.7	73.6	74.3
JULY	8.3	10.6	15.5	20.3	9.0	12.4	19.5	24.8	92.2	85.3	79.7	81.8
AUGUST	8.7	10.7	14.6	18.5	9.8	12.4	18.1	24.4	88.2	85.9	80.7	75.8
SEPTEMBER	7.6	8.7	14.0	16.5	8.9	11.6	18.0	22.2	85.0	74.8	77.9	74.3
OCTOBER	7.8	9.8	14.1	16.3	9.1	12.4	18.4	22.5	85.4	79.4	76.7	72.1
NOVEMBER	5.1	7.7	8.9	9.9	7.4	13.0	14.7	15.5	69.4	59.4	60.2	63.7
DECEMBER	6.5	8.7	10.9	10.9	8.2	12.9	16.3	15.3	78.6	67.4	67.3	71.5
TOTAL	79.1	97.6	139.4	167.6	96.9	129.5	189.7	231.6	81.6	75.2	73.5	72.4

Note: (1) All load factors are calculated on the basis of actual figures.

Table 2(e): Arrivals by air from U.K. (Scheduled Flights) 1990-1993

MONTH	SEATS USED (000's)				SEATS OFFERED (000's)				LOAD FACTOR (%) (1)			
	1990	1991	1992	1993	1990	1991	1992	1993	1990	1991	1992	1993
JANUARY	10.0	7.3	6.2	5.7	15.1	12.2	10.0	7.4	66.3	59.3	61.2	77.9
FEBRUARY	10.6	6.8	6.2	5.5	13.1	10.4	8.7	6.1	81.1	65.9	71.0	90.7
MARCH	12.9	7.4	7.7	7.1	14.8	9.2	9.2	7.5	87.1	81.3	83.0	95.9
APRIL	11.6	6.7	9.1	8.2	14.2	7.9	12.8	10.2	82.2	84.1	71.1	79.9
MAY	12.2	7.5	9.3	8.6	13.8	8.3	12.5	11.1	88.1	90.7	74.1	76.7
JUNE	12.1	7.9	9.6	8.6	13.7	9.5	12.0	11.1	88.3	83.5	79.8	77.7
JULY	13.9	10.8	11.5	10.1	14.6	12.3	12.5	10.9	95.5	88.1	92.2	92.3
AUGUST	12.5	9.7	9.8	8.8	14.3	11.9	12.6	11.0	87.2	81.3	77.4	79.9
SEPTEMBER	12.3	9.0	6.9	8.7	13.9	11.5	8.3	10.7	88.5	78.1	82.9	81.5
OCTOBER	11.5	8.6	9.0	7.9	14.5	11.7	11.9	11.2	79.2	74.0	75.6	70.5
NOVEMBER	8.4	6.7	6.6	6.1	11.6	11.1	8.8	7.3	72.2	60.4	74.7	84.0
DECEMBER	8.8	6.5	6.0	5.8	12.1	10.2	7.5	6.9	72.3	63.4	79.5	84.8
TOTAL	136.8	94.9	97.7	91.2	165.6	126.0	127.0	111.4	82.5	75.3	76.9	81.9

Note: (1) All load factors are calculated on the basis of actual figures.

Table 2(D): Arrivals by air from U.K. (Scheduled Flights) 1994-1997

MONTH	SEATS USED (000's)					SEATS OFFERED (000's)					LOAD FACTOR (%) (1)			
	1994	1995	1996	1997	1994	1995	1996	1997	1994	1995	1996	1997		
JANUARY	5.1	4.1	4.6	4.6	7.1	7.8	7.7	7.9	71.3	53.0	53.9	57.8		
FEBRUARY	5.0	5.6	5.5	5.2	5.9	6.6	7.7	6.3	83.5	84.2	68.9	83.0		
MARCH	6.9	7.3	7.0	6.1	7.4	7.8	8.4	6.9	93.8	93.8	83.7	87.4		
APRIL	6.7	7.7	6.3	5.4	9.4	10.1	8.5	6.6	71.0	76.0	74.3	82.3		
MAY	8.3	8.1	7.7	8.6	9.9	10.3	9.0	9.9	83.2	78.1	86.4	86.4		
JUNE	8.3	7.6	7.5	7.6	10.6	9.8	8.7	9.4	79.0	77.0	85.6	80.2		
JULY	9.6	8.8	7.6	8.6	10.8	10.3	8.4	9.5	89.0	85.8	90.7	90.8		
AUGUST	8.4	7.8	6.6	8.3	11.2	10.1	7.5	10.0	75.4	77.7	87.8	83.4		
SEPTEMBER	8.3	7.2	7.2	8.1	10.2	9.3	8.4	10.7	80.8	77.7	86.4	75.6		
OCTOBER	7.5	7.3	6.6	8.5	9.8	10.0	8.5	10.4	76.3	73.7	78.3	81.1		
NOVEMBER	5.3	5.8	5.8	5.9	6.9	8.4	7.8	9.2	76.3	69.5	74.5	63.7		
DECEMBER	5.9	6.5	5.7	6.4	7.2	8.9	8.1	9.8	82.4	73.8	70.7	65.8		
TOTAL	85.2	83.8	78.1	83.2	106.4	109.4	98.7	106.6	80.0	76.7	79.1	78.0		

Note: (1) All load factors are calculated on the basis of actual figures.

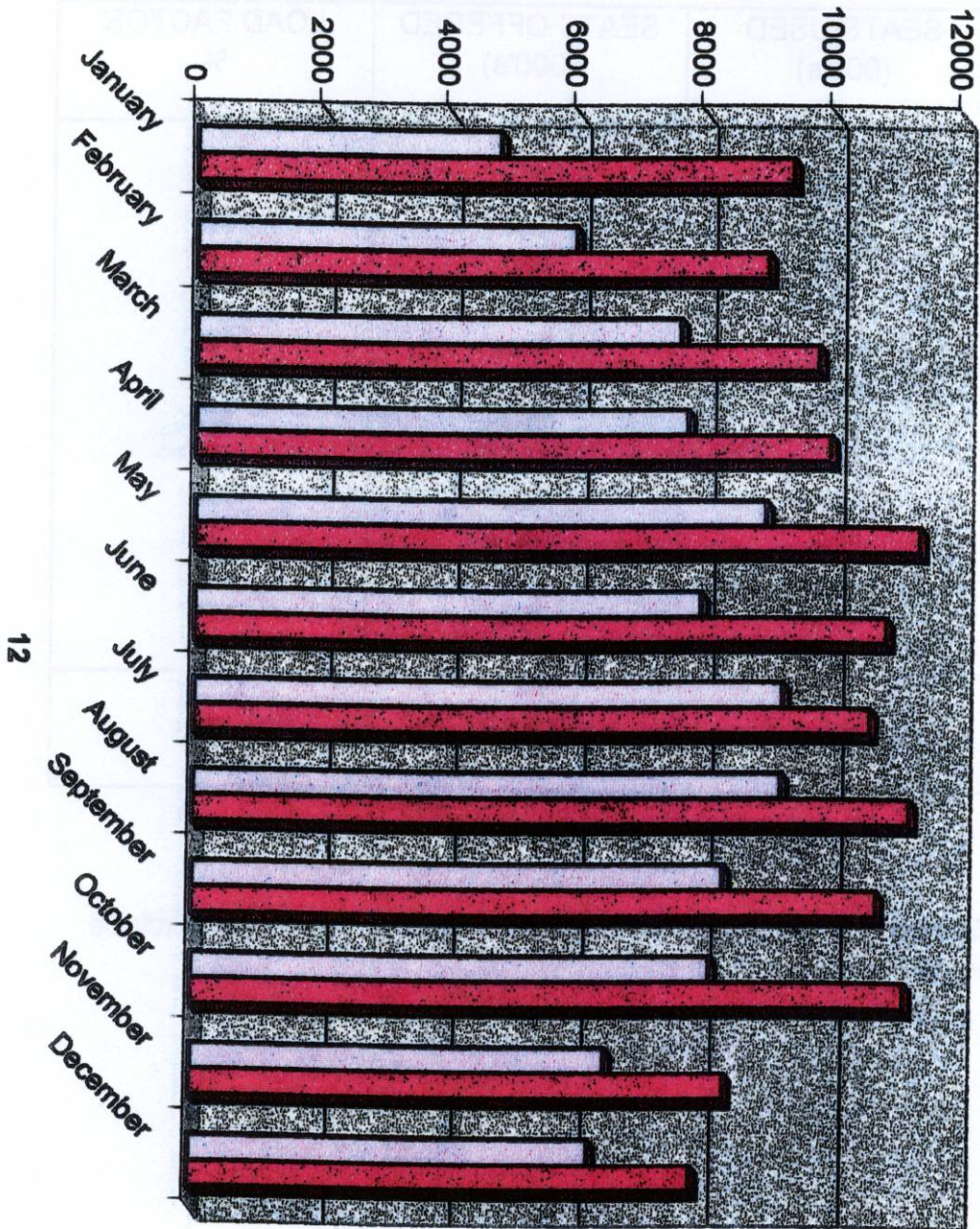
Table 2 (g): Arrivals by air from U. K. (Scheduled Flights) 1998

1998

MONTH	SEATS USED (000's)	SEATS OFFERED (000's)	LOAD FACTOR %
January	4.8	9.4	51.1
February	6.0	9.0	66.4
March	7.6	9.8	78.1
April	7.8	10.0	77.9
May	9.0	11.4	79.0
June	8.0	10.9	73.6
July	9.3	10.6	87.3
August	9.2	11.2	82.2
September	8.4	10.7	78.0
October	8.2	11.2	73.1
November	6.5	8.4	78.0
December	6.3	7.9	79.7
TOTAL	91.0	120.4	75.6

Note: Load factors are calculated on the basis of actual figures and exclude passengers in transit.

AIR ARRIVALS FROM UK (SCHEDULED FLIGHTS) - 1998



□ Seats Used
■ Seats Offered

ARRIVALS BY AIR FROM UK (SCHEDULED FLIGHTS) 1998

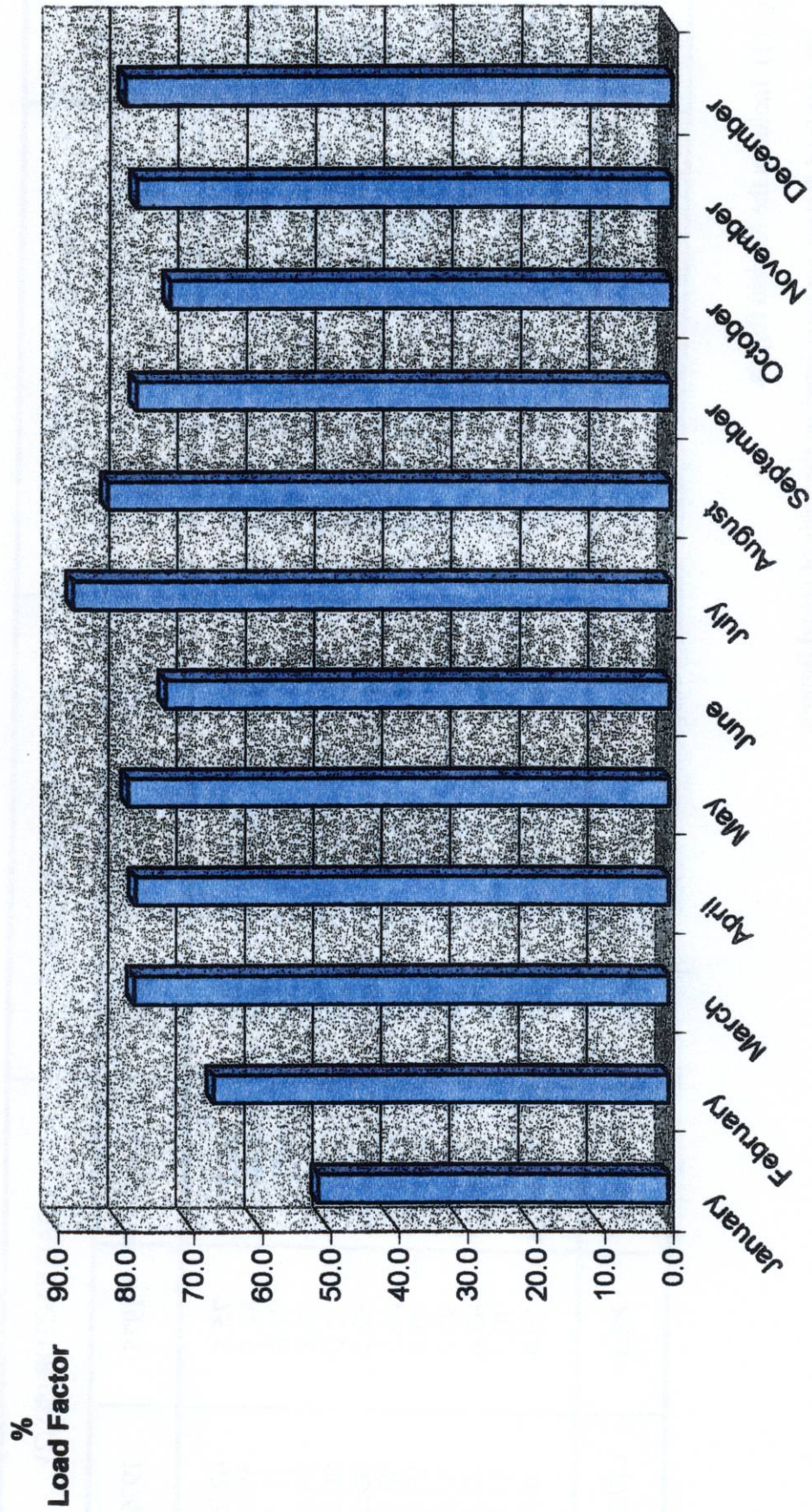


Table 3(a): Departures by air to U.K. (Scheduled Flights) 1974-1976 (1)

MONTH	SEATS USED (000's)			SEATS OFFERED (000's)			LOAD FACTOR (%) (2)		
	1974	1975	1976	1974	1975	1976	1974	1975	1976
JANUARY	3.5	3.1	2.4	5.3	4.2	3.8	65.9	75.1	62.7
FEBRUARY	3.1	2.8	1.9	4.7	3.3	3.2	67.4	84.1	59.4
MARCH	3.0	3.6	2.6	4.3	4.2	3.6	69.7	84.8	71.1
APRIL	3.8	3.6	3.5	4.9	4.5	4.3	77.1	79.8	80.8
MAY	3.0	3.8	2.9	4.8	5.1	4.3	63.3	75.0	66.3
JUNE	4.0	4.0	3.6	5.2	4.9	4.2	76.0	82.7	85.6
JULY	4.3	4.4	3.6	5.3	5.1	4.7	81.3	86.5	76.5
AUGUST	5.4	5.5	4.5	5.9	5.7	4.8	91.1	95.9	93.4
SEPTEMBER	4.8	4.8	4.2	5.2	5.0	5.0	90.9	95.1	85.9
OCTOBER	4.3	4.0	3.6	4.9	4.7	4.4	87.8	85.6	82.1
NOVEMBER	3.2	2.6	2.4	3.7	3.7	2.9	88.6	70.7	82.7
DECEMBER	2.9	2.1	2.1	3.9	3.5	2.8	74.0	59.9	76.6
TOTAL	45.3	44.3	37.3	58.1	53.9	48.0	78.0	82.3	77.7

Notes: (1) Includes the Madrid flights.

(2) All load factors are calculated on the basis of actual figures.

Table 3(b): Departures by air to U.K. (Scheduled Flights) 1977-1979 (1)

MONTH	SEATS USED (000's)			SEATS OFFERED (000's)			LOAD FACTOR (%) (2)		
	1977	1978	1979	1977	1978	1979	1977	1978	1979
JANUARY	2.3	2.1	1.7	3.2	2.6	2.5	70.5 (66.7)	79.6 (76.0)	69.0 (63.5)
FEBRUARY	2.1	1.6	1.4	2.6	2.2	2.3	80.7 (73.1)	70.3 (63.0)	65.0 (53.9)
MARCH	2.7	2.3	2.4	3.2	2.6	2.6	86.4 (73.9)	89.2 (79.2)	91.4 (83.6)
APRIL	1.7	2.7	2.5	2.0	2.9	3.2	87.8 (85.8)	92.7 (89.3)	80.0 (76.9)
MAY	2.2	2.4	2.3	2.9	2.8	3.4	74.9 (71.5)	88.8 (84.0)	69.5 (65.2)
JUNE	2.8	2.7	2.3	3.3	2.9	3.2	85.0 (80.4)	92.1 (89.0)	69.8 (66.3)
JULY	3.1	3.0	2.5	3.5	3.2	3.1	88.4 (85.4)	93.7 (92.1)	79.3 (77.3)
AUGUST	3.3	3.2	3.3	3.6	3.4	3.4	93.0 (90.0)	95.2 (93.7)	97.3 (95.1)
SEPTEMBER	3.2	3.1	2.9	3.3	3.1	3.3	96.1 (90.9)	100.0 (97.2)	88.6 (85.2)
OCTOBER	2.8	2.7	2.8	3.0	2.7	3.3	92.6 (88.1)	99.6 (95.1)	82.9 (78.0)
NOVEMBER	1.8	2.1	1.7	2.4	2.4	2.7	74.1 (68.7)	85.1 (80.3)	63.9 (59.8)
DECEMBER	2.1	1.9	1.5	2.7	2.8	2.7	77.0 (73.6)	68.8 (66.1)	55.3 (52.0)
TOTAL	30.1	29.8	27.3	35.7	33.6	35.7	84.3 (79.4)	88.6 (84.6)	76.5 (72.6)

Notes: (1) Includes the Madrid flights.

(2) Figures show both passenger and "revenue" load factors. The latter is derived by excluding non-paying passengers from the "seats used" column. All load factors are calculated on the basis of actual figures.

Table 3(c): Departures by air to U.K. (Scheduled Flights) 1980-1982 (1)

MONTH	SEATS USED (000's)			SEATS OFFERED (000's)			LOAD FACTOR (%) (2)		
	1980	1981	1982	1980	1981	1982	1980	1981	1982
JANUARY	1.7	1.6	1.9	2.8	2.1	2.2	59.3 (56.6)	75.9 (73.2)	85.2 (82.5)
FEBRUARY	1.5	1.5	1.6	2.7	1.9	2.3	56.6 (52.3)	79.3 (74.7)	70.9 (67.4)
MARCH	2.1	1.6	1.9	2.8	2.1	2.1	75.7 (67.7)	76.5 (70.9)	91.3 (86.2)
APRIL	2.0	2.2	2.6	2.4	2.7	3.2	84.7 (81.9)	83.0 (80.7)	82.1 (80.3)
MAY	1.7	1.8	2.1	2.5	2.7	3.2	69.0 (64.0)	64.4 (61.6)	67.0 (65.3)
JUNE	2.0	1.8	2.3	2.3	2.6	3.4	84.4 (80.4)	72.0 (69.3)	69.3 (67.4)
JULY	2.1	2.0	2.5	2.7	2.8	3.5	77.1 (74.5)	69.0 (65.9)	70.4 (69.3)
AUGUST	2.6	2.4	3.0	2.7	2.6	3.3	96.9 (95.4)	92.4 (89.9)	90.6 (88.6)
SEPTEMBER	2.2	2.4	2.8	2.5	2.7	3.4	84.8 (82.1)	89.2 (84.8)	83.1 (81.5)
OCTOBER	2.4	2.4	2.5	2.8	2.7	3.4	87.5 (82.8)	87.7 (84.0)	72.2 (68.2)
NOVEMBER	1.3	1.9	1.9	1.9	2.1	2.8	70.6 (65.2)	89.6 (84.3)	67.7 (64.2)
DECEMBER	1.5	1.8	1.6	1.9	2.1	2.8	78.1 (75.4)	86.1 (83.2)	55.2 (53.5)
TOTAL	23.1	23.4	26.7	30.0	29.1	35.6	77.0 (73.2)	80.2 (76.7)	75.1 (72.6)

Notes: (1) 1979 includes the Madrid flights.

(2) Figures show both passenger and "revenue" load factors. The latter is derived by excluding non-paying passengers from the "seats used" column. All load factors are calculated on the basis of actual figures.

Table 3(d): Departures by air to U.K. (Scheduled Flights) 1983-1985

MONTH	SEATS USED (000's)			SEATS OFFERED (000's)			LOAD FACTOR (%) (1)		
	1983	1984	1985	1983	1984	1985	1983	1984	1985
JANUARY	1.7	2.1	2.3	2.9	2.6	2.6	61.2 (58.8)	80.5 (77.6)	89.3 (87.0)
FEBRUARY	1.5	1.5	1.9	2.6	2.1	2.2	56.6 (53.7)	72.6 (69.7)	85.9 (82.8)
MARCH	2.0	2.0	2.8	3.0	2.4	3.2	67.2 (61.7)	85.2 (81.3)	89.9 (86.4)
APRIL	2.6	2.5	4.0	3.9	3.1	4.6	65.8 (63.4)	80.3 (77.6)	89.0 (87.3)
MAY	2.0	2.0	3.6	4.0	3.2	4.4	48.6 (47.0)	64.0 (61.7)	81.7 (79.9)
JUNE	2.6	2.4	4.3	3.9	3.2	5.0	65.5 (64.2)	74.3 (72.2)	85.5 (84.4)
JULY	2.4	2.3	4.3	4.0	3.3	5.6	60.8 (59.2)	69.6 (68.0)	76.3 (75.5)
AUGUST	3.3	3.1	6.2	4.0	3.3	6.5	81.4 (79.5)	94.1 (92.2)	94.3 (93.4)
SEPTEMBER	3.1	3.0	5.6	3.9	3.3	5.9	78.3 (75.3)	92.5 (89.5)	94.1 (92.4)
OCTOBER	2.5	2.6	5.2	3.6	3.2	5.9	69.9 (66.6)	80.5 (76.2)	89.2 (86.8)
NOVEMBER	1.6	2.1	5.4	2.2	2.4	6.3	74.2 (71.1)	87.9 (83.0)	85.6 (82.7)
DECEMBER	1.5	2.0	4.4	2.4	2.5	7.5	63.3 (61.4)	78.9 (77.4)	58.9 (58.0)
TOTAL	26.8	27.6	50.0	40.4	34.6	59.7	66.2 (63.7)	80.0 (77.2)	83.9 (82.1)

Note: (1) Figures show both passenger and revenue load factors. The latter is derived by excluding non-paying passengers from the "seats used" column. All load factors are calculated on the basis of actual figures.

Table 3(e): Departures by air to U.K. (Scheduled Flights) 1986-1988

MONTH	SEATS USED (000's)			SEATS OFFERED (000's)			LOAD FACTOR (%) (1)		
	1986	1987	1988	1986	1987	1988	1986	1987	1988
JANUARY	5.2	6.4	9.0	6.9	7.9	12.7	75.8 (74.2)	80.6 (79.4)	70.6 (69.7)
FEBRUARY	4.1	4.7	8.2	5.9	6.6	11.2	70.0 (66.1)	70.8 (68.0)	73.1 (72.0)
MARCH	6.0	7.0	9.4	7.1	8.6	12.9	84.1 (82.8)	81.8 (78.1)	73.0 (71.5)
APRIL	6.8	7.5	12.2	7.3	8.3	14.4	92.0 (90.5)	90.2 (89.1)	85.0 (83.6)
MAY	6.3	8.7	11.6	8.6	11.2	16.8	73.9 (72.4)	77.8 (76.1)	68.9 (67.8)
JUNE	7.5	8.7	14.1	8.6	11.9	16.6	87.1 (85.9)	72.9 (71.4)	85.1 (83.8)
JULY	6.9	8.7	13.3	9.0	12.1	17.5	76.6 (75.4)	71.9 (70.6)	76.0 (75.3)
AUGUST	9.2	11.6	15.9	9.8	12.5	18.1	93.4 (92.7)	92.5 (91.7)	87.9 (87.3)
SEPTEMBER	8.6	10.6	15.4	9.0	11.7	17.8	95.7 (94.1)	90.3 (89.2)	86.2 (85.2)
OCTOBER	8.5	10.5	15.5	9.1	12.5	18.2	93.0 (91.1)	84.1 (82.5)	85.5 (84.4)
NOVEMBER	6.2	9.4	11.0	7.4	12.9	14.9	83.8 (81.2)	72.3 (71.1)	74.3 (72.4)
DECEMBER	4.9	6.9	8.7	8.2	13.0	16.1	59.7 (58.5)	55.6 (53.6)	53.8 (53.1)
TOTAL	80.1	100.7	144.3	96.9	129.2	187.2	82.7 (81.1)	77.8 (77.7)	77.1 (76.1)

Note: (1) Figures show both passenger and revenue load factors. The latter is derived by excluding non-paying passengers from the "seats used" column. All load factors are calculated on the basis of actual figures.

Table 3(f): Departures by air to U.K. (Scheduled Flights) 1989-1991

MONTH	SEATS USED (000's)			SEATS OFFERED (000's)			LOAD FACTOR (%) (1)		
	1989	1990	1991	1989	1990	1991	1989	1990	1991
JANUARY	12.2	11.4	7.5	18.0	15.4	12.1	67.7 (66.4)	74.3 (73.0)	62.1 (60.6)
FEBRUARY	10.2	10.5	6.7	14.4	13.3	10.3	70.9 (69.3)	79.1 (77.2)	65.4 (63.2)
MARCH	11.9	12.3	6.2	17.8	14.4	8.7	67.1 (65.0)	85.0 (83.2)	71.3 (69.1)
APRIL	13.6	13.0	7.8	17.5	14.6	8.6	77.3 (76.3)	89.2 (87.9)	90.2 (87.6)
MAY	13.3	11.7	6.9	18.7	14.2	8.2	70.7 (69.4)	82.2 (80.6)	83.6 (81.0)
JUNE	15.9	13.2	7.9	19.5	14.1	9.8	81.6 (80.5)	93.3 (92.0)	80.5 (77.9)
JULY	17.1	12.5	9.2	24.5	14.6	12.4	70.0 (69.0)	86.0 (84.7)	73.8 (71.2)
AUGUST	20.9	13.7	11.0	24.5	15.2	12.3	85.1 (84.4)	90.5 (89.8)	89.5 (87.0)
SEPTEMBER	18.4	13.4	9.9	22.0	14.3	12.2	83.5 (82.5)	93.2 (91.7)	81.7 (78.7)
OCTOBER	18.3	13.8	10.1	22.5	14.7	12.1	81.5 (80.1)	93.5 (92.2)	83.3 (81.5)
NOVEMBER	11.9	9.6	7.3	15.5	12.0	10.9	77.2 (75.3)	80.5 (77.5)	67.0 (65.4)
DECEMBER	10.2	8.7	6.1	15.0	12.1	10.2	68.2 (67.1)	71.8 (70.2)	59.7 (58.5)
TOTAL	174.0	143.8	96.6	230.0	168.9	127.8	75.7 (70.5)	85.1 (83.6)	75.6 (73.3)

Note: (1) Figures show both passenger and revenue load factors. The latter is derived by excluding non-paying passengers from the "seats used" column. All load factors are calculated on the basis of actual figures.

Table 3(g): Departures by air to U.K. (Scheduled Flights) 1992-1994

MONTH	SEATS USED (000's)				SEATS OFFERED (000's)				LOAD FACTOR (%) (1)			
	1992	1993	1994	TOTAL	1992	1993	1994	TOTAL	1992	1993	1994	TOTAL
JANUARY	6.7	6.1	5.8	10.2	7.6	7.1	65.9 (64.8)	80.5 (79.3)	81.9 (80.8)			
FEBRUARY	6.2	5.4	5.0	8.6	6.4	6.2	72.5 (70.2)	83.8 (82.9)	81.7 (80.1)			
MARCH	7.0	6.7	5.5	9.2	7.8	7.5	76.0 (73.8)	86.1 (84.7)	74.1 (72.9)			
APRIL	9.5	8.3	7.6	12.8	10.0	9.3	74.3 (73.2)	82.3 (81.0)	81.9 (81.2)			
MAY	8.6	7.9	7.6	12.6	11.1	10.1	68.1 (66.8)	71.3 (69.8)	76.3 (75.2)			
JUNE	9.8	9.4	8.7	12.2	11.1	10.4	80.4 (79.1)	84.1 (82.9)	84.8 (83.7)			
JULY	9.8	8.7	8.4	12.5	11.3	10.9	78.5 (76.7)	77.5 (76.7)	77.0 (77.5)			
AUGUST	11.5	10.0	9.7	12.8	10.9	10.9	89.7 (88.8)	91.4 (90.5)	89.0 (88.3)			
SEPTEMBER	7.6	9.7	9.3	8.2	10.5	10.2	91.9 (90.2)	92.2 (91.0)	91.8 (91.2)			
OCTOBER	10.5	9.5	8.9	11.9	11.1	10.2	87.7 (85.9)	86.0 (85.0)	88.3 (87.5)			
NOVEMBER	7.8	6.5	5.6	9.0	7.3	6.8	86.0 (84.2)	88.8 (87.3)	83.3 (82.4)			
DECEMBER	5.6	5.1	4.8	7.6	6.9	7.2	73.8 (72.5)	73.2 (72.4)	67.3 (66.9)			
TOTAL	100.5	93.3	86.9	127.7	112.2	107.1	78.7 (77.2)	83.2 (82.0)	81.2 (80.3)			

Note: (1) Figures show both passenger and revenue load factors. The latter is derived by excluding non-paying passengers from the "seats used" column. All load factors are calculated on the basis of actual figures.

Table 3(h): Departures by air to U.K. (Scheduled Flights) 1995-1997

MONTH	SEATS USED (000's)			SEATS OFFERED (000's)			LOAD FACTOR (%) (1)		
	1995	1996	1997	1995	1996	1997	1995	1996	1997
JANUARY	5.5	5.3	4.7	7.8	7.7	6.8	70.8 (70.3)	69.4 (69.0)	68.5 (67.4)
FEBRUARY	5.2	5.6	5.1	6.9	8.2	6.4	75.1 (74.4)	68.1 (67.6)	79.4 (78.3)
MARCH	6.6	6.3	5.2	7.7	8.1	6.8	85.1 (84.6)	77.1 (76.4)	76.4 (75.5)
APRIL	8.3	7.0	6.1	10.3	8.7	6.7	80.5 (80.3)	81.0 (80.7)	90.1 (89.7)
MAY	7.3	7.0	7.7	10.4	8.7	9.6	69.8 (69.4)	79.9 (79.5)	79.8 (79.2)
JUNE	8.2	8.1	7.9	9.9	9.1	9.5	82.5 (82.0)	89.5 (89.1)	83.2 (83.0)
JULY	7.9	6.8	7.5	10.3	8.6	9.7	76.5 (76.0)	79.1 (79.0)	77.0 (76.7)
AUGUST	8.5	6.8	8.7	10.3	7.6	9.5	82.8 (82.4)	89.7 (89.5)	91.7 (91.4)
SEPTEMBER	8.4	8.0	8.8	9.6	8.5	10.5	87.6 (87.0)	93.5 (93.2)	83.8 (83.5)
OCTOBER	8.3	7.3	8.6	9.9	8.3	9.6	83.0 (82.4)	88.6 (88.2)	90.0 (89.6)
NOVEMBER	6.3	5.9	6.5	8.5	7.6	9.2	73.8 (73.1)	77.7 (77.1)	70.3 (70.0)
DECEMBER	4.8	4.1	4.7	7.9	7.0	10.1	61.5 (60.8)	58.8 (58.4)	46.3 (46.1)
TOTAL	85.3	78.2	81.5	109.5	98.1	104.4	77.8 (77.3)	79.6 (79.0)	78.1 (77.6)

Note: (1) Figures show both passenger and revenue load factors. The latter is derived by excluding non-paying passengers from the "seats used" column. All load factors are calculated on the basis of actual figures.

Table 3 (i): Departures by air to U. K. (Scheduled Flights) 1998

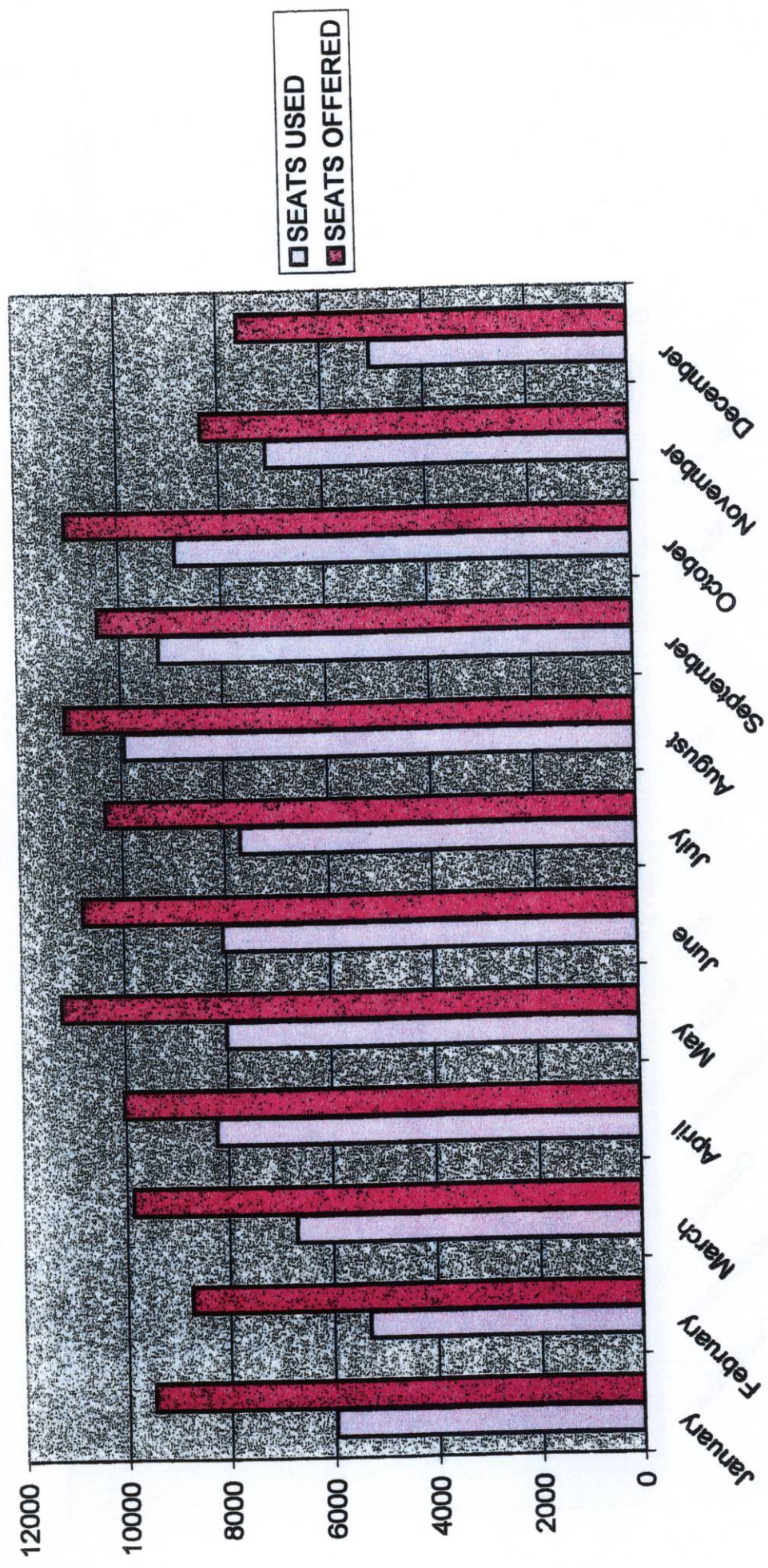
1998

MONTH	SEATS USED (000's)	SEATS OFFERED (000's)	LOAD FACTOR %	
			(1)	(2)
January	6.0	9.5	63.1	62.7
February	5.3	8.7	60.7	60.2
March	6.7	9.9	67.9	67.5
April	8.2	10.0	81.9	81.7
May	8.0	11.2	71.3	70.9
June	8.1	10.8	74.6	74.2
July	7.7	10.3	74.5	74.3
August	9.9	11.1	89.5	89.4
September	9.2	10.4	88.5	88.4
October	8.9	11.0	80.5	80.3
November	7.1	8.3	84.9	84.4
December	5.0	7.6	66.2	65.5
TOTAL	90.1	119.0	75.7	75.4

Note: (1) Passenger load factors are calculated on the basis of actual figures and exclude passengers in transit.

(2) Revenue load factors exclude non-paying passengers from the Seats Used figures and are also calculated on the basis of actual figures.

DEPARTURES BY AIR TO UK (SCHEDULED FLIGHTS) - 1998



DEPARTURES BY AIR TO UK (SCHEDULED FLIGHTS) 1998

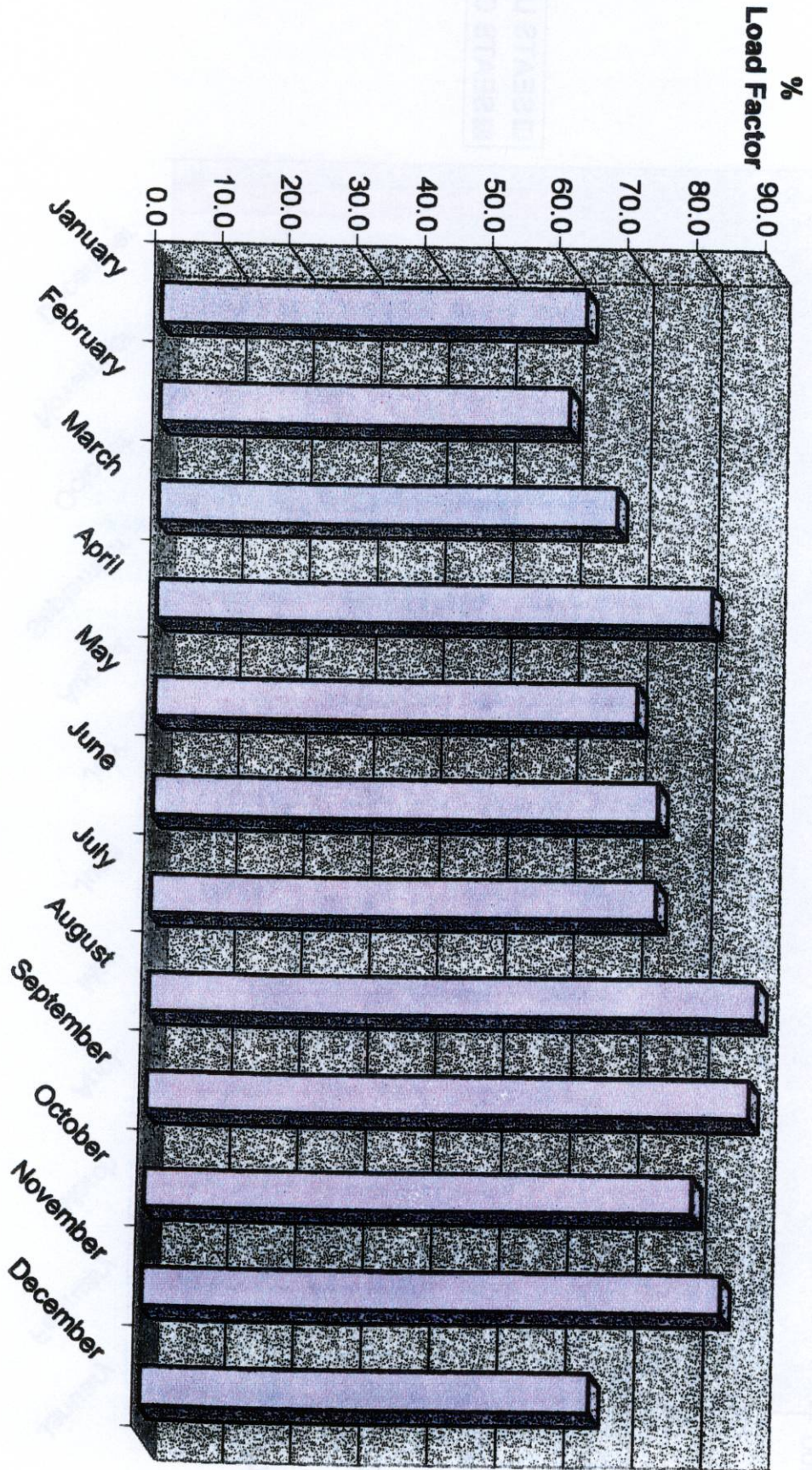


Table 4(a): Arrivals by air from U.K. (Charter Flights) 1978-1981 (1)

MONTH	SEATS USED (000's)				SEATS OFFERED (000's)				LOAD FACTOR (%)			
	1978	1979	1980	1981	1978	1979	1980	1981	1978	1979	1980	1981
	JANUARY	0.4	0.8	1.6	1.3	0.7	0.9	2.1	1.6	59.1	90.5	78.8
FEBRUARY	0.2	0.7	1.6	1.2	0.3	0.7	1.8	1.3	71.0	92.8	94.2	93.1
MARCH	0.4	0.8	1.8	1.6	0.7	1.0	2.0	1.7	54.9	85.5	91.5	94.3
APRIL	0.9	1.0	2.1	1.6	0.9	1.1	2.3	1.7	94.9	88.7	88.2	89.3
MAY	1.1	2.4	2.5	2.0	1.4	2.7	3.3	2.2	77.7	90.3	77.6	91.8
JUNE	1.3	2.7	2.4	2.4	1.4	3.2	3.5	2.6	92.4	82.4	67.3	91.3
JULY	1.4	3.7	3.4	2.1	1.4	4.1	3.8	2.3	99.4	91.0	88.7	89.8
AUGUST	1.8	2.6	3.6	2.5	1.9	3.1	4.1	2.9	97.7	84.3	88.1	88.6
SEPTEMBER	1.4	2.9	3.3	2.2	1.5	3.2	3.7	2.7	89.7	89.6	88.5	83.4
OCTOBER	1.2	1.9	2.2	2.0	1.4	2.6	2.9	3.1	84.9	71.2	74.8	64.5
NOVEMBER	1.4	1.7	1.3	1.5	1.9	1.9	1.6	2.3	76.5	88.0	81.1	65.8
DECEMBER	1.3	1.5	1.3	1.5	1.8	1.8	1.6	2.0	70.0	84.2	81.6	74.5
TOTAL	12.8	22.7	27.1	21.9	15.3	26.3	32.7	26.4	83.3	86.0	83.0	83.0

Note: (1) Regular Charter operations commenced in April 1977. Figures exclude Ministry of Defence Charter Flights.

Table 4(b): Arrivals by air from U.K. (Charter Flights) 1982-1985 (1)

MONTH	SEATS USED (000's)					SEATS OFFERED (000's)					LOAD FACTOR (%)				
	1982	1983	1984	1985	1982	1983	1984	1985	1982	1983	1984	1985			
JANUARY	1.2	0.9	1.2	0.7	1.6	1.2	1.7	0.9	74.6	79.5	71.7	82.5			
FEBRUARY	1.1	1.0	1.1	1.0	1.2	1.0	1.2	1.0	90.2	94.0	97.7	99.9			
MARCH	1.4	1.2	1.8	1.5	1.4	1.2	1.9	1.6	97.3	94.7	92.7	95.0			
APRIL	1.8	1.5	1.7	1.7	2.1	2.2	1.9	1.8	86.6	69.2	89.7	92.9			
MAY	2.0	1.9	2.2	2.0	2.5	2.4	2.7	2.3	80.6	79.0	80.7	88.1			
JUNE	2.0	1.8	2.2	1.9	2.6	2.2	2.7	2.2	79.5	82.7	82.0	88.4			
JULY	3.0	2.5	3.1	2.6	3.2	2.8	3.4	2.9	91.4	87.5	91.0	90.6			
AUGUST	2.4	2.3	2.6	2.0	3.1	2.5	2.7	2.1	76.2	93.4	94.1	93.9			
SEPTEMBER	2.0	2.2	2.5	2.4	2.2	2.6	3.0	2.5	89.7	85.5	85.4	93.1			
OCTOBER	1.4	1.7	2.2	1.5	1.9	2.7	2.9	2.2	76.0	63.8	76.6	68.1			
NOVEMBER	1.1	1.5	1.4	-	1.3	2.0	1.6	-	84.9	74.9	89.3	-			
DECEMBER	1.1	2.0	0.9	-	1.3	2.4	1.0	-	87.8	83.1	87.5	-			
TOTAL	20.5	20.5	22.9	17.3	24.4	25.2	26.7	19.5	84.0	81.3	86.0	88.9			

Note: (1) Figures exclude Ministry of Defence Charter Flights.

Table 4(c): Arrivals by air from U.K. (Charter Flights) 1986-1989 (1)

MONTH	SEATS USED (000's)				SEATS OFFERED (000's)				LOAD FACTOR (%)			
	1986	1987	1988	1989	1986	1987	1988	1989	1986	1987	1988	1989
JANUARY	-	2.3	1.6	1.2	-	2.5	1.7	1.7	-	92.2	93.4	72.4
FEBRUARY	0.1	1.5	1.5	1.4	0.1	1.6	1.6	1.8	90.8	97.1	97.5	77.9
MARCH	-	1.2	1.8	0.4	-	1.2	1.8	0.4	-	95.7	96.7	84.7
APRIL	-	1.6	1.2	0.8	-	1.6	1.4	1.3	-	97.6	80.5	61.4
MAY	0.8	0.1	0.6	-	1.0	0.2	0.7	-	83.8	61.9	90.2	-
JUNE	0.7	1.2	0.2	-	0.8	1.3	0.3	-	84.5	88.8	85.7	-
JULY	0.6	1.0	0.5	-	0.6	1.0	0.5	-	94.9	98.0	96.7	-
AUGUST	0.7	1.0	0.6	-	0.7	1.0	0.7	-	96.8	97.1	95.4	-
SEPTEMBER	0.6	1.3	0.5	0.2	0.6	1.3	0.6	0.2	95.4	98.4	74.3	77.9
OCTOBER	0.6	0.8	0.6	-	0.9	1.0	0.7	0.1	66.1	75.4	95.2	-
NOVEMBER	-	1.5	1.1	0.8	-	1.6	1.2	1.2	-	98.3	96.9	66.0
DECEMBER	-	1.6	1.5	0.8	-	1.7	1.7	1.0	-	96.0	86.5	80.9
TOTAL	4.1	15.1	11.7	5.6	4.8	16.0	12.9	7.8	84.1	94.4	90.7	71.7

Note: (1) Figures exclude Ministry of Defence Charter Flights.

Table 4(d): Arrivals by air from U.K. (Charter Flights) 1990-1992 (1)(2)

MONTH	SEATS USED (000's)			SEATS OFFERED (000's)			LOAD FACTOR (%) (3)		
	1990	1991	1992	1990	1991	1992	1990	1991	1992
JANUARY	0.8	-	0.1	1.0	0.2	0.1	79.5	5.8	96.9
FEBRUARY	1.0	-	-	1.0	-	-	91.7	-	-
MARCH	1.3	0.1	-	1.3	0.1	-	96.9	90.2	-
APRIL	0.8	-	-	1.3	-	-	58.1	-	-
MAY	-	1.5	-	-	1.9	-	-	79.3	-
JUNE	-	1.8	-	-	2.5	-	-	74.2	-
JULY	0.3	2.1	0.1	0.4	2.4	0.1	90.8	89.0	93.3
AUGUST	0.2	2.7	-	0.3	3.1	-	65.1	87.6	-
SEPTEMBER	0.2	1.8	-	0.5	2.3	-	42.0	81.2	-
OCTOBER	-	1.0	-	-	1.8	-	-	57.0	-
NOVEMBER	0.2	-	-	0.5	0.1	-	52.6	6.1	-
DECEMBER	-	-	0.1	-	-	0.1	-	-	100.0
TOTAL	4.8	9.0	0.3	6.3	12.0	0.3	75.9	75.2	96.9

Note: (1) Figures exclude Ministry of Defence Charter Flights.
 (2) No Charter Flights were recorded during 1993, 1994, 1995, 1996 and 1997.

Table 4 (e): Arrivals by Air (Charter Flights) 1998

1998

MONTH	SEATS USED (000's)	SEATS OFFERED (000's)	LOAD FACTOR (%)
January	0.0	0.0	0.0
February	0.0	0.0	0.0
March	0.0	0.0	0.0
April	0.0	0.0	0.0
May	0.0	0.0	0.0
June	0.0	0.0	0.0
July	0.0	0.0	0.0
August	0.0	0.0	0.0
September	0.0	0.0	0.0
October	0.0	0.1	58.0
November	0.7	0.7	99.3
December	0.3	0.4	79.4
TOTAL	1.1	1.2	90.1

Note: Load factors are calculated on the basis of actual figures and exclude passengers in transit.

Table 5(a): Departures by air to U.K. (Charter Flights) 1978-1981 (1)

MONTH	SEATS USED (000's)				SEATS OFFERED (000's)				LOAD FACTOR (%) (2)			
	1978	1979	1980	1981	1978	1979	1980	1981	1978	1979	1980	1981
JANUARY	0.5	0.7	1.7	1.5	0.7	0.8	2.0	1.6	59.1	82.5	83.6	91.7
FEBRUARY	0.2	0.6	1.6	1.2	0.3	0.7	1.8	1.3	71.0	86.5	92.1	89.4
MARCH	0.3	0.8	1.8	1.5	0.7	1.0	2.0	1.7	54.9	86.6	92.6	89.9
APRIL	0.7	1.0	2.2	1.6	0.9	1.1	2.3	1.7	94.9	88.8	94.3	92.8
MAY	1.0	1.7	2.0	1.8	1.4	2.7	3.3	2.2	77.7	63.6	61.4	78.3
JUNE	1.3	2.7	2.6	2.4	1.4	3.2	3.5	2.6	92.4	82.4	72.5	92.8
JULY	1.3	3.5	3.0	2.0	1.4	4.1	3.8	2.3	99.4	84.9	77.6	87.1
AUGUST	1.8	2.9	3.9	2.6	1.9	3.1	4.1	2.9	97.7	93.2	96.6	90.5
SEPTEMBER	1.5	3.0	3.5	2.5	1.5	3.2	3.7	2.7	89.7	93.0	94.9	91.7
OCTOBER	1.4	2.4	2.8	2.6	1.4	2.6	2.9	3.1	84.9	91.8	94.4	84.4
NOVEMBER	1.6	1.8	1.4	1.9	1.9	2.0	1.6	2.4	76.5	92.3	89.2	80.4
DECEMBER	1.5	1.5	1.3	1.7	1.8	1.8	1.6	2.0	70.0	84.5	80.2	88.0
TOTAL	13.1	22.6	27.8	23.3	15.3	26.3	32.6	26.5	83.3	85.8	85.2	87.8

Notes: (1) Regular Charter operations commenced in April 1977. Figures exclude Ministry of Defence Charter Flights.

(2) No figures available for non-paying passengers and therefore the "revenue" load factor is not shown.

Table 5(b): Departures by air to U.K. (Charter Flights) 1982-1985 (1)

MONTH	SEATS USED (000's)				SEATS OFFERED (000's)				LOAD FACTOR (%) (2)			
	1982	1983	1984	1985	1982	1983	1984	1985	1982	1983	1984	1985
JANUARY	1.2	1.0	1.5	0.7	1.6	1.2	1.7	0.9	74.8	88.5	89.0	85.0
FEBRUARY	1.1	0.9	1.0	0.9	1.2	1.0	1.2	1.0	89.6	83.7	86.3	89.7
MARCH	1.4	1.2	1.8	1.5	1.4	1.2	1.9	1.6	96.9	97.0	93.0	96.0
APRIL	1.8	1.5	1.8	1.7	2.1	2.2	1.9	1.8	89.2	69.2	94.5	96.0
MAY	1.9	1.6	1.7	1.7	2.5	2.4	2.7	2.3	78.6	66.7	63.7	72.6
JUNE	2.1	1.9	2.2	1.9	2.5	2.2	2.7	2.2	82.1	83.7	83.0	89.8
JULY	2.6	2.3	3.0	2.5	3.2	2.8	3.4	2.8	80.4	83.2	86.5	87.9
AUGUST	2.7	2.3	2.7	2.0	3.1	2.5	2.7	2.1	86.3	93.2	98.3	98.0
SEPTEMBER	2.0	2.5	2.7	2.5	2.2	2.6	3.0	2.5	91.8	97.5	90.7	97.5
OCTOBER	1.8	2.3	2.7	2.2	1.9	2.7	2.9	2.2	97.1	83.1	95.5	98.1
NOVEMBER	1.2	1.5	1.5	-	1.3	2.0	1.6	-	90.1	74.9	93.3	-
DECEMBER	1.1	1.7	0.8	-	1.3	2.4	1.0	-	86.9	72.2	80.1	-
TOTAL	20.9	20.7	23.4	17.6	24.3	25.2	26.7	19.4	86.1	82.2	87.8	91.2

Notes: (1) Figures exclude Ministry of Defence Charter Flights.

(2) No figures available for non-paying passengers and therefore the "revenue" load factor is not shown.

Table 5(c): Departures by air to U.K. (Charter Flights) 1986-1989 (1)

MONTH	SEATS USED (000's)				SEATS OFFERED (000's)				LOAD FACTOR (%) (2)			
	1986	1987	1988	1989	1986	1987	1988	1989	1986	1987	1988	1989
JANUARY	-	2.2	1.6	1.3	-	2.5	1.7	1.7	-	89.0	94.2	78.3
FEBRUARY	0.1	1.5	1.5	1.4	0.1	1.6	1.6	1.8	90.8	95.0	94.4	76.2
MARCH	-	1.0	1.7	0.3	-	1.2	1.6	1.8	-	83.1	93.9	79.1
APRIL	-	0.8	1.4	1.2	-	1.6	1.4	0.4	-	51.7	96.0	92.0
MAY	0.6	0.0	0.6	-	1.0	0.2	0.7	1.3	61.8	32.3	91.2	-
JUNE	0.7	1.2	0.2	-	0.8	1.3	0.3	-	85.6	95.1	90.4	-
JULY	0.5	0.9	0.4	-	0.6	1.0	0.5	-	87.7	86.0	80.6	-
AUGUST	0.7	1.0	0.6	-	0.7	1.0	0.7	-	97.8	93.9	96.0	-
SEPTEMBER	0.6	1.3	0.6	0.2	0.6	1.3	0.6	0.3	97.8	98.6	91.8	77.1
OCTOBER	0.6	1.0	0.6	0.1	0.9	1.0	0.7	0.1	97.8	95.5	91.0	67.2
NOVEMBER	-	1.6	0.9	0.6	-	1.3	1.2	1.2	74.0	81.5	78.6	47.7
DECEMBER	-	1.6	1.3	0.7	-	1.7	1.7	1.0	-	95.5	79.5	71.7
TOTAL	4.0	14.1	11.4	5.8	4.9	15.8	12.9	7.8	81.5	89.8	88.4	74.5

Notes: (1) Figures exclude Ministry of Defence Charter Flights.

(2) No figures available for non-paying passengers and therefore the "revenue" load factor is not shown.

Table 5(d): Departures by air to U.K. (Charter Flights) 1990-1992 (1) (2)

MONTH	SEATS USED (000's)			SEATS OFFERED (000's)			LOAD FACTOR (%) (3)		
	1990	1991	1992	1990	1991	1992	1990	1991	1992
JANUARY	0.8	0.1	0.1	1.0	0.2	0.1	77.3	64.6	93.1
FEBRUARY	0.9	-	-	1.0	-	-	83.6	-	-
MARCH	1.2	0.1	-	1.3	0.1	-	93.2	84.8	-
APRIL	1.0	-	-	1.3	-	-	77.9	-	-
MAY	-	0.9	-	-	1.9	-	-	47.6	-
JUNE	-	1.8	-	-	2.5	-	-	74.2	-
JULY	0.2	1.8	0.1	0.4	2.4	0.1	60.8	74.9	93.3
AUGUST	0.2	2.9	-	0.3	3.0	-	62.4	94.2	-
SEPTEMBER	0.2	2.0	-	0.5	2.3	-	45.1	87.6	-
OCTOBER	-	1.6	-	-	2.0	-	-	78.6	-
NOVEMBER	0.2	0.2	-	0.5	0.3	-	53.2	88.1	-
DECEMBER	-	-	0.3	-	-	0.2	-	-	75.4
TOTAL	4.6	9.6	0.5	6.3	12.3	0.4	75.9	78.2	84.3

Notes: (1) Figures exclude Ministry of Defence Charter Flights. (2) No charter flights were recorded during 1993, 1994, 1995, 1996 and 1997.

(3) No figures available for non-paying passengers and therefore the "revenue" load factor is not shown.

Table 5 (e): Departures by Air (Charter Flights) 1998

1998

MONTH	SEATS USED (000's)	SEATS OFFERED (000's)	LOAD FACTOR (%)
January	0.0	0.0	0.0
February	0.0	0.0	0.0
March	0.0	0.0	0.0
April	0.0	0.0	0.0
May	0.0	0.0	0.0
June	0.0	0.0	0.0
July	0.0	0.0	0.0
August	0.0	0.0	0.0
September	0.0	0.0	0.0
October	0.0	0.1	46.0
November	0.6	0.7	88.1
December	0.3	0.4	57.3
TOTAL	0.9	1.2	74.8

Note: (1) Passenger load factors are calculated on the basis of actual figures and exclude passengers in transit.

(2) Revenue load factors exclude non-paying passengers from the Seats Used figures and are also calculated on the basis of actual figures.

Table 6(a): Arrivals from Morocco 1989-1992

MONTH	SEATS USED (000's)					SEATS OFFERED (000's)					LOAD FACTOR (%)				
	1989	1990	1991	1992		1989	1990	1991	1992		1989	1990	1991	1992	
JANUARY	1.7	0.7	0.3	-		3.0	1.4	1.0	-		56.9	51.1	30.9	-	
FEBRUARY	1.7	0.6	-	-		3.0	1.1	0.1	-		57.1	56.6	2.6	-	
MARCH	2.4	0.8	-	-		3.5	1.3	0.5	-		70.3	64.4	4.9	-	
APRIL	0.5	0.3	0.2	-		0.6	0.7	1.8	-		78.4	42.8	8.4	-	
MAY	-	0.3	0.3	-		-	0.8	0.9	-		-	45.3	36.2	-	
JUNE	0.4	0.3	-	-		0.9	0.7	-	-		41.1	42.8	-	-	
JULY	0.7	-	-	-		1.3	0.2	-	-		50.6	11.5	-	-	
AUGUST	1.1	-	-	-		1.6	-	-	-		68.7	-	-	-	
SEPTEMBER	0.8	-	-	-		1.3	-	-	-		60.9	-	-	-	
OCTOBER	0.9	-	-	0.5		1.5	-	-	0.7		62.9	-	-	71.8	
NOVEMBER	0.6	0.5	-	0.4		1.4	1.8	-	2.5		45.0	28.2	-	15.6	
DECEMBER	0.5	0.4	-	0.4		1.2	1.7	-	2.4		44.4	25.5	-	15.4	
TOTAL	11.4	3.9	0.8	1.3		19.3	9.7	4.3	5.6		58.9	42.2	19.1	22.9	

Table 6(b): Arrivals from Morocco 1993-1996

MONTH	SEATS USED (000's)					SEATS OFFERED (000's)					LOAD FACTOR (%)				
	1993	1994	1995	1996	TOTAL	1993	1994	1995	1996	TOTAL	1993	1994	1995	1996	
JANUARY	0.6	0.6	0.4	1.6	2.5	2.6	3.2	4.1	23.7	23.1	12.9	40.0			
FEBRUARY	0.5	0.5	0.3	0.6	2.2	2.6	2.8	3.1	22.2	19.2	9.9	19.2			
MARCH	0.6	0.5	0.4	1.0	2.6	2.7	2.9	3.0	21.4	17.5	14.0	33.3			
APRIL	0.4	0.5	0.5	0.6	2.7	2.2	3.2	3.0	15.8	22.8	16.7	21.5			
MAY	0.4	0.4	0.5	0.4	2.9	2.5	3.5	2.7	15.6	14.9	13.0	15.6			
JUNE	0.3	0.3	0.4	0.5	2.3	2.2	3.5	2.8	14.9	13.0	12.3	19.0			
JULY	0.5	0.4	0.4	0.8	2.4	2.0	2.9	2.8	22.1	20.3	13.9	27.1			
AUGUST	0.6	0.5	0.6	0.8	1.7	1.5	2.9	2.2	38.1	30.3	22.1	34.8			
SEPTEMBER	0.5	0.4	0.4	0.5	1.8	1.6	2.9	2.5	28.7	21.7	13.8	20.1			
OCTOBER	0.7	0.4	0.4	0.5	2.2	2.1	3.0	2.8	32.8	18.7	12.4	16.9			
NOVEMBER	0.5	0.4	0.7	0.6	2.5	3.2	3.2	2.8	21.0	11.4	20.8	22.3			
DECEMBER	0.5	0.3	0.5	0.6	2.5	3.3	3.1	2.3	18.7	10.4	16.5	23.5			
TOTAL	6.2	5.0	5.5	8.5	28.2	28.5	37.0	34.1	22.1	17.7	14.9	24.9			

Table 6 (c): Arrivals by air from Morocco (Scheduled Flights), 1997-1998

MONTH	SEATS USED (000's)		SEATS OFFERED (000's)		LOAD FACTOR (%)	
	1997	1998	1997	1998	1997	1998
January	0.5	0.3	3.3	2.6	13.7	12.0
February	0.4	0.4	2.5	2.4	16.4	17.2
March	0.5	0.4	2.9	2.2	17.4	19.4
April	0.5	0.3	2.1	1.0	22.8	30.8
May	0.5	0.3	2.4	1.2	21.4	22.2
June	0.4	0.2	2.3	1.2	15.7	17.0
July	0.4	0.2	2.6	1.1	13.9	21.6
August	0.5	0.2	1.8	0.9	28.1	25.2
September	0.3	0.2	2.1	0.9	16.0	22.0
October	0.4	0.3	2.4	1.5	18.6	16.8
November	0.5	0.1	2.6	0.9	21.2	8.2
December	0.4	0.2	2.7	1.0	15.5	22.3
TOTAL	5.3	3.2	30.0	17.0	18.0	18.6

Note: Load factors are calculated on the basis of actual figures and exclude visitors in transit.

**ARRIVALS BY AIR FROM MOROCCO (SCHEDULED FLIGHTS)
1997 - 1998**

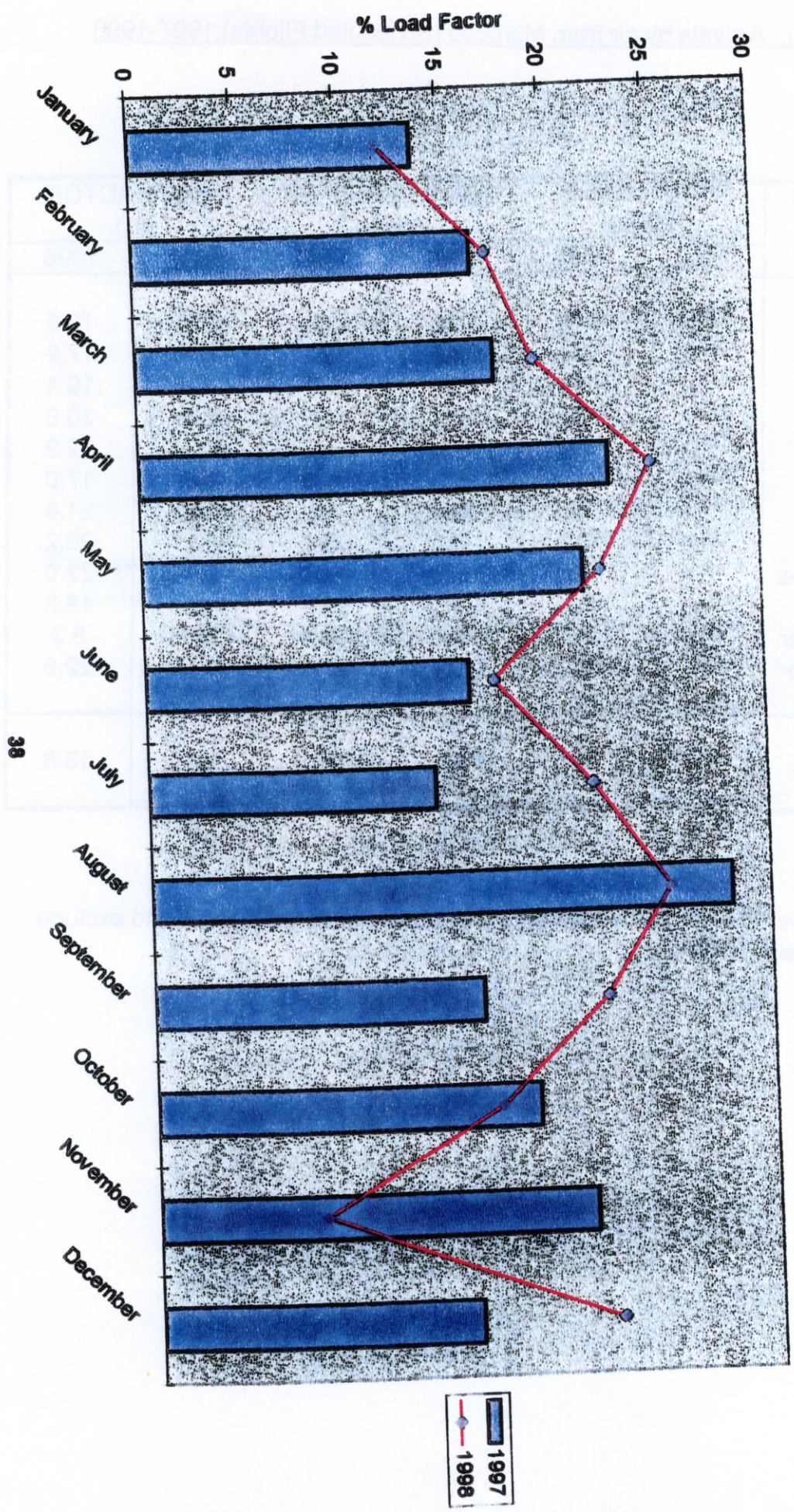


Table 7(a): Departures by air to Morocco 1989-1992

MONTH	SEATS USED (000's)				SEATS OFFERED (000's)				LOAD FACTOR (%)			
	1989	1990	1991	1992	1989	1990	1991	1992	1989	1990	1991	1992
JANUARY	1.6	0.7	0.3	-	3.0	1.4	1.1	-	54.0	49.2	28.7	-
FEBRUARY	1.7	0.6	-	-	3.0	1.1	0.1	-	56.2	55.6	4.3	-
MARCH	2.4	0.7	-	-	3.5	1.3	0.6	-	70.0	58.8	6.8	-
APRIL	0.4	0.4	0.1	-	0.6	0.7	0.9	-	71.1	53.5	9.6	-
MAY	-	0.3	0.3	-	-	0.8	0.9	-	-	41.6	35.7	-
JUNE	0.4	0.3	-	-	0.9	0.7	-	-	42.6	46.8	-	-
JULY	0.7	-	-	-	1.3	0.2	-	-	53.8	13.5	-	-
AUGUST	1.0	-	-	-	1.6	-	-	-	66.0	-	-	-
SEPTEMBER	0.8	-	-	-	1.3	-	-	-	60.4	-	-	-
OCTOBER	0.9	-	-	0.1	1.5	-	-	0.5	61.8	-	-	17.6
NOVEMBER	0.7	0.5	-	0.4	1.4	1.8	-	2.6	47.3	29.1	-	16.5
DECEMBER	0.5	0.6	-	0.5	1.2	1.7	-	2.4	44.3	33.5	-	22.2
TOTAL	11.2	4.1	0.8	1.1	19.3	9.7	3.6	5.6	58.1	43.5	21.6	19.1

Table 7(b): Departures by air to Morocco 1993-1996

MONTH	SEATS USED (000's)					SEATS OFFERED (000's)					LOAD FACTOR (%) (1)				
	1993	1994	1995	1996	1996	1993	1994	1995	1996	1996	1993	1994	1995	1996	
JANUARY	0.7	0.7	0.4	0.7	0.7	2.6	2.7	3.4	3.2	26.5	25.5	11.3 (10.9)	21.5 (21.3)		
FEBRUARY	0.7	0.4	0.3	0.8	0.8	2.3	2.5	2.8	2.7	32.0	17.9	9.6 (9.5)	30.0 (30.0)		
MARCH	0.6	0.7	0.5	0.9	0.9	2.6	2.7	3.2	3.0	22.5	25.7	16.5 (16.3)	30.5 (30.4)		
APRIL	0.6	0.5	0.5	0.6	0.6	3.0	2.4	3.0	2.8	21.5	19.7	17.0 (17.0)	20.6 (20.6)		
MAY	0.6	0.4	0.7	0.6	0.6	2.9	2.6	3.8	3.0	22.7	14.7	18.2 (17.7)	21.1 (21.1)		
JUNE	0.6	0.3	0.6	0.6	0.6	2.4	2.3	3.6	3.0	23.7	12.7	16.8 (16.2)	20.7 (20.4)		
JULY	0.8	0.4	0.4	0.8	0.8	1.9	1.6	2.7	2.8	39.2	26.6	13.6 (13.5)	28.7 (28.5)		
AUGUST	0.9	0.6	0.5	0.7	0.7	1.9	1.8	2.7	2.4	46.0	30.8	18.1 (17.9)	28.9 (28.9)		
SEPTEMBER	0.7	0.3	0.7	0.6	0.6	2.0	1.8	2.8	2.6	37.0	18.9	24.9 (24.1)	24.7 (24.5)		
OCTOBER	0.9	0.5	0.6	0.6	0.6	2.3	2.2	3.2	3.0	39.3	21.5	18.2 (17.3)	19.4 (19.1)		
NOVEMBER	0.6	0.5	0.6	0.9	0.9	2.7	3.4	3.3	2.9	21.8	13.5	17.6 (17.2)	31.4 (31.4)		
DECEMBER	0.6	0.4	0.6	0.6	0.6	2.5	3.3	2.9	3.0	21.8	19.3	19.0 (18.7)	20.7 (20.7)		
TOTAL	8.3	5.7	6.2	8.4	8.4	29.1	29.3	37.4	34.4	28.4	19.3	16.7 (16.3)	24.7 (24.6)		

Note: (1) Figures show both passenger and revenue load factors. The latter is derived by excluding non-paying passengers from the "seats used" column. All load factors are calculated on the basis of actual figures.

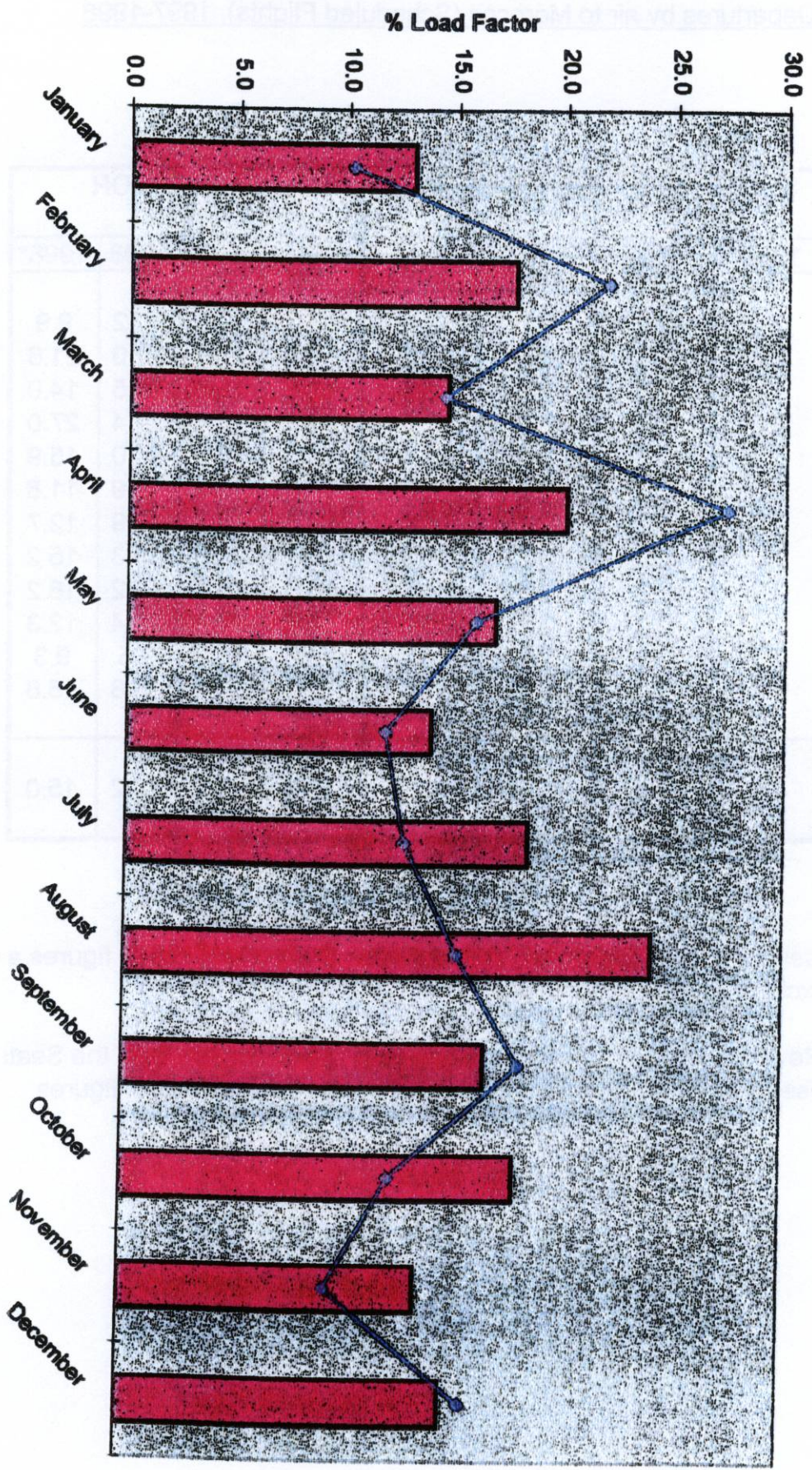
Table 7 (c): Departures by air to Morocco (Scheduled Flights), 1997-1998

MONTH	SEATS USED (000's)		SEATS OFFERED (000's)		LOAD FACTOR (%)			
	1997	1998	1997	1998	1997	1997*	1998	1998*
January	0.4	0.2	3.1	2.4	13.0	13.0	10.2	9.9
February	0.4	0.5	2.4	2.2	17.7	17.1	22.0	21.6
March	0.4	0.3	2.9	2.3	14.6	13.6	14.5	14.0
April	0.4	0.3	2.1	1.0	20.1	19.4	27.4	27.0
May	0.5	0.2	2.7	1.4	16.9	16.3	16.0	15.9
June	0.3	0.2	2.3	1.3	14.0	13.3	11.9	11.8
July	0.4	0.2	2.4	1.4	18.5	17.9	12.9	12.7
August	0.5	0.2	2.2	1.2	24.1	23.6	15.3	15.2
September	0.4	0.2	2.5	1.1	16.6	16.1	18.2	18.2
October	0.4	0.2	2.1	1.7	18.0	17.4	12.4	12.3
November	0.3	0.1	2.3	1.0	13.6	13.2	9.5	9.3
December	0.4	0.2	2.5	1.0	14.8	14.4	15.8	15.8
TOTAL	4.9	2.8	29.5	18.1	16.6	16.2	15.2	15.0

Note: (1) Passenger load factors are calculated on the basis of actual figures and exclude passengers in transit.

*(2) Revenue load factors exclude non-paying passengers from the Seats Used figures and are also calculated on the basis of actual figures.

**DEPARTURES BY AIR TO MOROCCO (SCHEDULED FLIGHTS)
1997 - 1998**



1997
 1998

Table 8: Commercial Freight, Set Down/Picked Up, Gibraltar 1972 -1998

(000's kgs)

YEAR	SET DOWN	PICKED UP
1972	1501	69
1973	1831	87
1974	1881	134
1975	1701	119
1976	1721	125
1977	1089	87
1978	927	62
1979	896	61
1980	447	38
1981	318	64
1982	481	44
1983	381	38
1984	333	36
1985	419	40
1986	523	59
1987	499	67
1988	599	40
1989	648	45
1990	797	95
1991	596	54
1992	476	64
1993	597	74
1994	518	49
1995	504	52
1996	406	58
1997	330	57
1998	406	69

Note: Relates to freight from/to all destinations.

COMMERCIAL FREIGHT 1972 - 1998

