

# Climate Change

Government of Gibraltar  
Department of the Environment



# *Climate Change*

**The climate has changed over the past century.**

**The evidence suggests a human influence on the global climate.**

**The climate is expected to continue to change in the future.**

**There are still many uncertainties.**



**The earth naturally undergoes cycles of warming and cooling.**

# ***Natural climate change***

**The Earth's climate is never static and subject to constant (usually gradual) change.**



# *Gibraltar present day*





# *Gibraltar 20,000 yrs ago*





# *Present Day*





*20,000 years ago*





# *Recent changes*



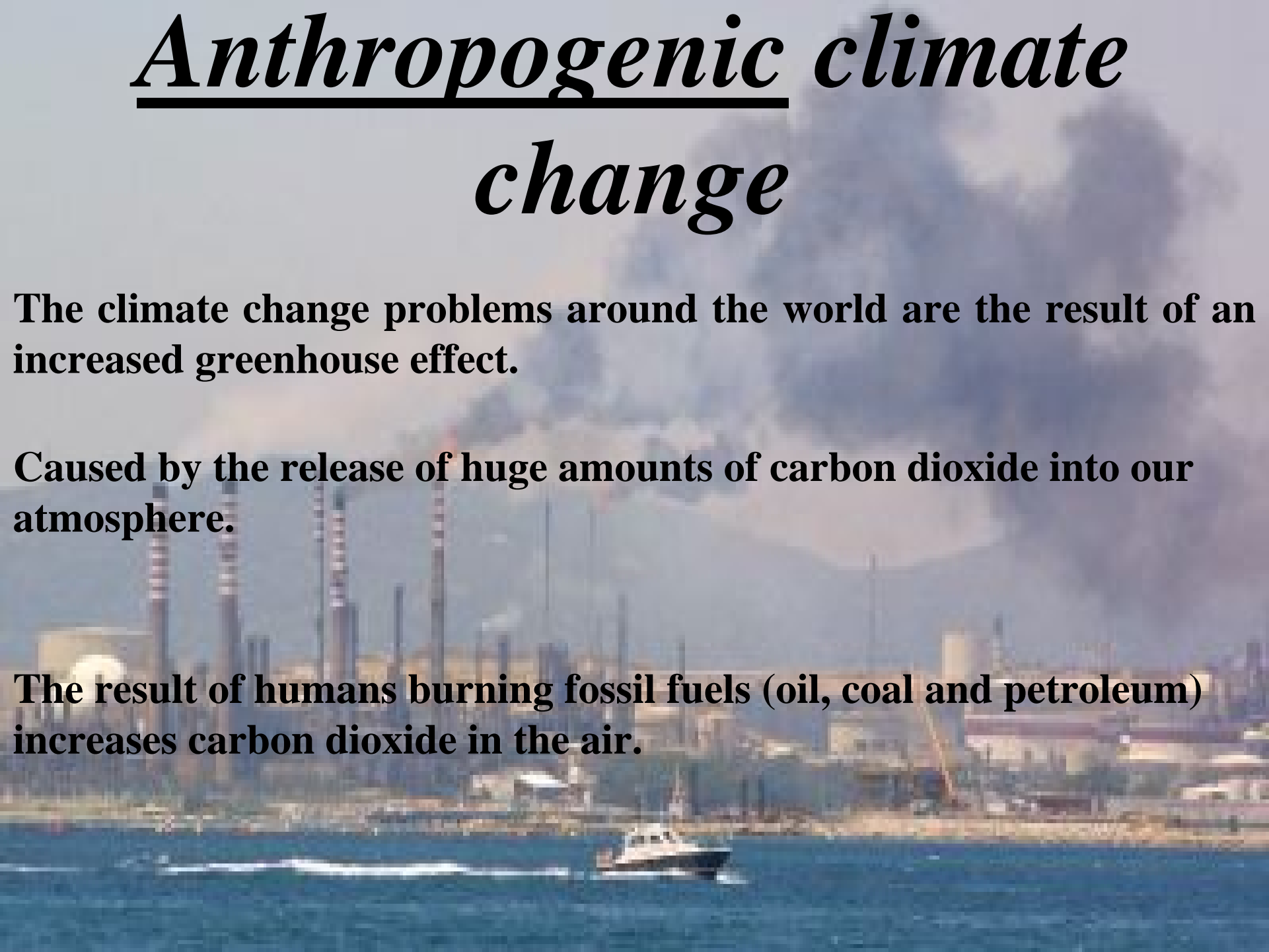


# **Anthropogenic climate change**

**The climate change problems around the world are the result of an increased greenhouse effect.**

**Caused by the release of huge amounts of carbon dioxide into our atmosphere.**

**The result of humans burning fossil fuels (oil, coal and petroleum) increases carbon dioxide in the air.**







*What is energy?*



# *Where do we get the energy from?*





# *Healthy Energy Sources*

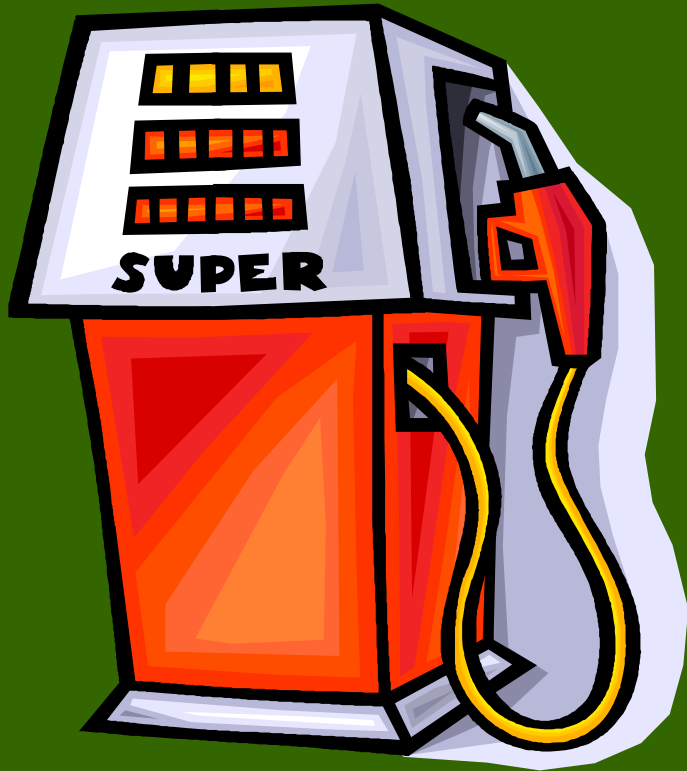




*Makes the environment a  
better place*

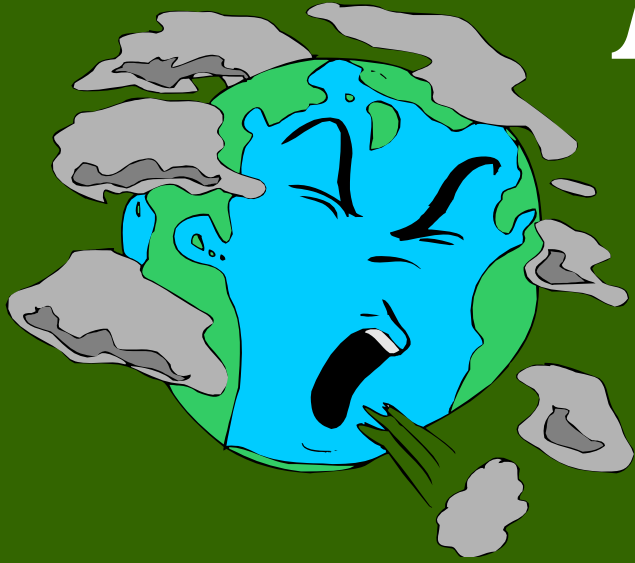


# *Unhealthy Energy Sources*





# *Pollution*



*The link...*

**ENERGY**

Fossil fuels = energy

=

Energy = emissions

**CLIMATE**

Emissions = climate change

**CHANGE**



# *Regional effects*

Sea level rise

Storms

Drought

Increased temperatures

Habitat destruction



# *Coastal defences...*





# *Storms*



# ***Destruction***



© Christian Lara



© James Elliot



# *Infrastructure*

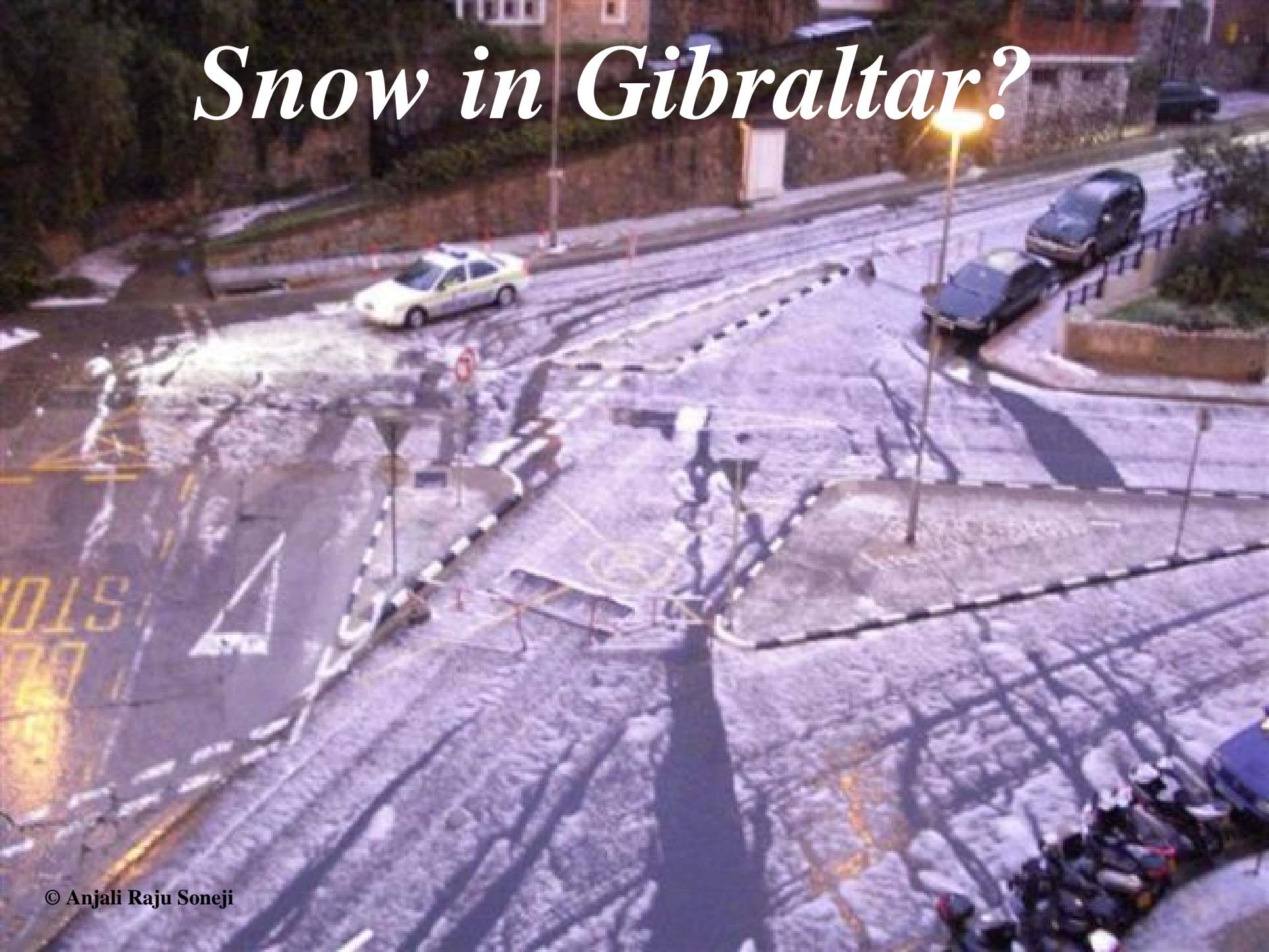




*Damage...*



# *Snow in Gibraltar?*



# *Frosty*





# *White Christmas?*





# *Bird Migration*



## Some Facts

- 605 plant species
- 41 terrestrial molluscs
- 12+ Woodlice and relatives
- 46 species of butterfly
- 4 species of amphibians
- 20 species of reptiles
- 308 species of birds
- 16 species of mammal

## *Local Habitats*



# *Why is Gibraltar important?*

1. Gibraltar's location between two continents and two seas.
2. The migration of millions of birds and insects.
3. The migration of fish, cetaceans, and other marine organisms.
4. The structure and composition of the Rock, which determines its plant and animal communities.



# *Addressing the problem....*

The global response

The EU response

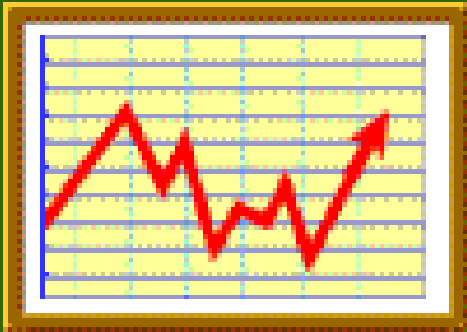
Local response

# *Sustainable Development*

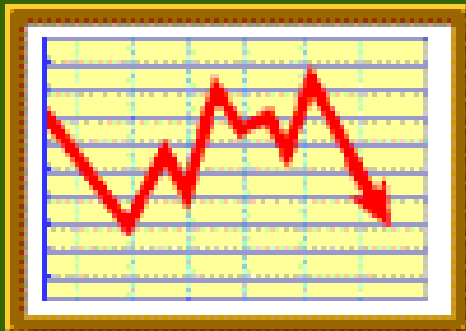
*“Meeting the needs of the present without affecting the ability of future generations to meet their own needs”*



# *Energy conservation*



Current trend



Goal



# *How can we keep protect the environment?*



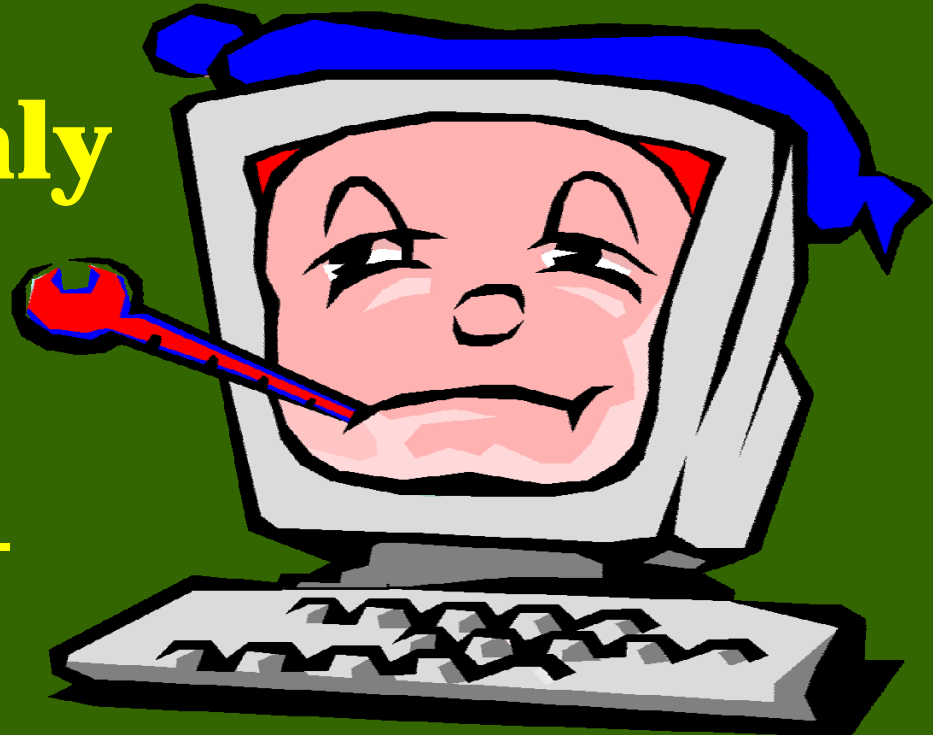


# *Energy Efficiency*



Food for thought...

**You're not the only  
one who likes to  
SWITCH OFF!**



# *Eco labels*



<b>Energy</b> Manufacturer Model	
More efficient	
A	<b>A</b>
B	
C	
D	
E	
F	
G	
Less efficient	
Energy consumption kWh/year (Based on standard test results for 24h)	<b>325</b>
Actual consumption will depend on how the appliance is used and where it is located	
Fresh food volume l Frozen food volume l	190 126 <b>****</b>
Noise (dB(A) re 1 pW)	
Further information is contained in product brochures	
Nom. EN 153 May 1990 Refrigerator Label Directive 94/2/EC	





# *Local Environment*



*Every effort counts*



*Can you help our  
superhero save energy?*





*Thank you*



**Government of Gibraltar**  
**Department of the Environment**